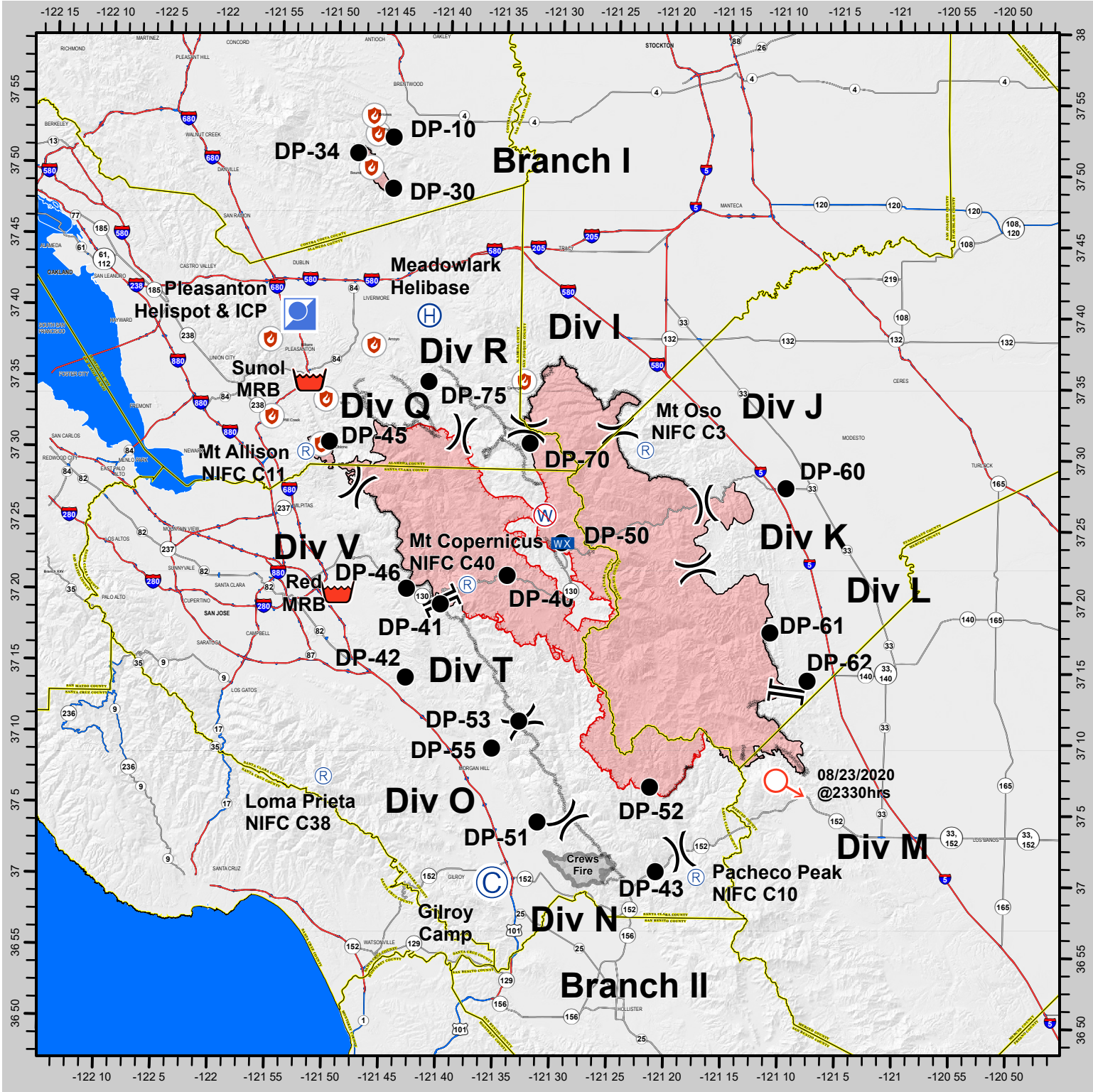




SCU LIGHTNING COMPLEX INCIDENT TRANSPORTATION MAP

CA SCU 005740 - 8/27/2020



CAL FIRE - INCIDENT MANAGEMENT TEAM 6 *Established 1994*



⊙ Camp	☒ Mobile Weather Unit	🔥 Fire Point	⌘ Completed Dozer Line
● Drop Point	Ⓡ Repeater) (Division Break	H Completed Hand Line
Ⓜ Helibase	🛑 Retardant/Mud Pit] [Branch Break	🔴 Wildfire Daily Fire Perimeter
Ⓧ Helispot	⚡ Spot Fire	🔴 Uncontrolled Fire Edge	🟡 County or Equivalent
🏠 Incident Command Post	🚫 Restricted Water Source	🔴 Contained Line	

IMT 6 GISS
8/26/2020
2352 Hours
NAD 83 Teale Albers

DISCLAIMER:
The displayed incident data is approximate and should only be used for informational purposes. The information contained in this map is not intended to be used for any purpose other than that for which it was prepared and is not necessarily accurate to mapping, surveying, or engineering standards.