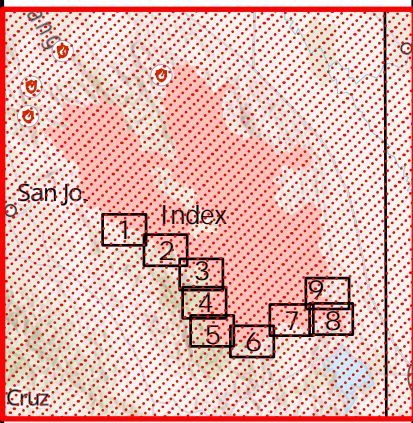


# IAP Map

SCU Lightning Complex  
BRANCH II  
CA SCU 005740  
8/29/2020

Page: Index

- Camp
- A Dip Site
- ! Drop Point
- ⊙ Helibase
- ⊙ Helispot
- ⊙ Incident Command Post
- ⊙ Mobile Weather Unit
- ⊙ Repeater
- ⊙ Retardant/Mud Pit
- ⊙ Spot Fire
- ⊙ Restricted Water Source
- ⊙ Fire Point
- ) ( Division Break
- ] [ Branch Break
- Uncontrolled Fire Edge
- Contained Line
- Completed Dozer Line
- | 2 Completed Hand Line
- D Proposed Dozer Line
- Wildfire Daily Fire Perimeter

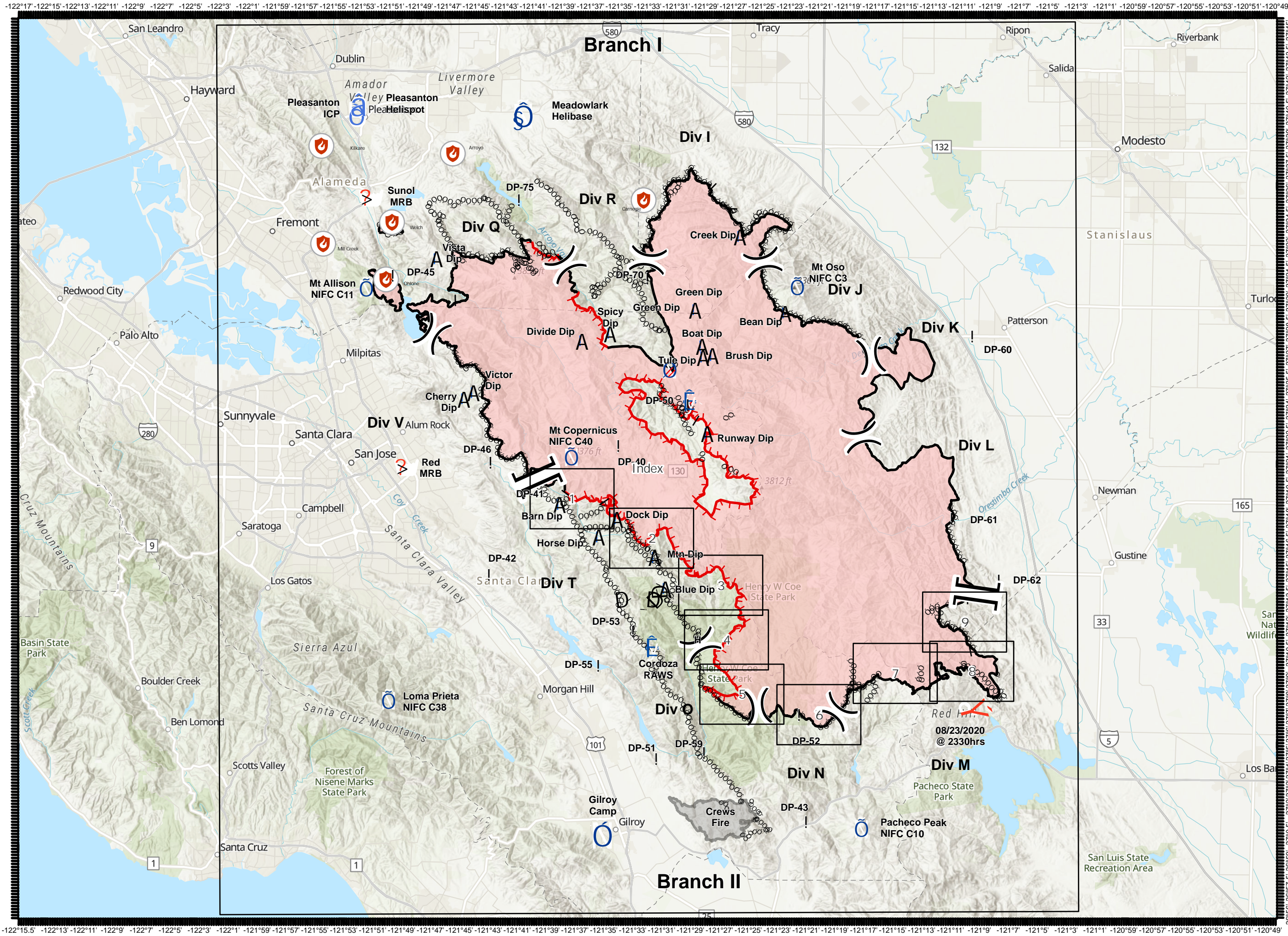


**DISCLAIMER:**  
The displayed incident data is approximate and should only be used for informational purposes. The information contained in supporting base layers was generated from GIS data maintained by different sources and agencies and is not necessarily accurate to mapping, surveying, or engineering standards.

1: 360,000



8/29/2020  
0043 Hours



08/23/2020  
@ 2330hrs

-122°17' -122°15' -122°13' -122°11' -122°9' -122°7' -122°5' -122°3' -122°1' -121°59' -121°57' -121°55' -121°53' -121°51' -121°49' -121°47' -121°45' -121°43' -121°41' -121°39' -121°37' -121°35' -121°33' -121°31' -121°29' -121°27' -121°25' -121°23' -121°21' -121°19' -121°17' -121°15' -121°13' -121°11' -121°9' -121°7' -121°5' -121°3' -121°1' -120°59' -120°57' -120°55' -120°53' -120°51' -120°49'

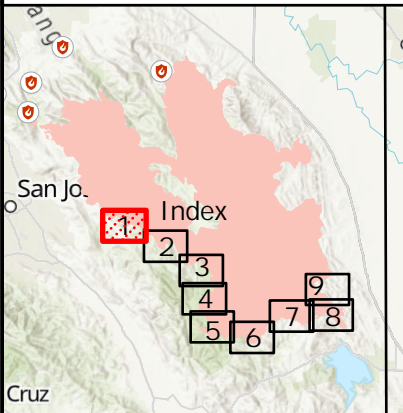


# IAP Map

SCU Lightning Complex  
BRANCH II  
CA SCU 005740  
8/29/2020

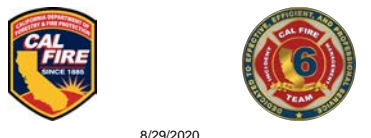
Page: 1

- A Dip Site
- ! Drop Point
- || Branch Break
- ▬ Uncontrolled Fire Edge
- ▬ Contained Line
- ó ó Completed Dozer Line
- | 2 Completed Hand Line
- Other Incident Roads

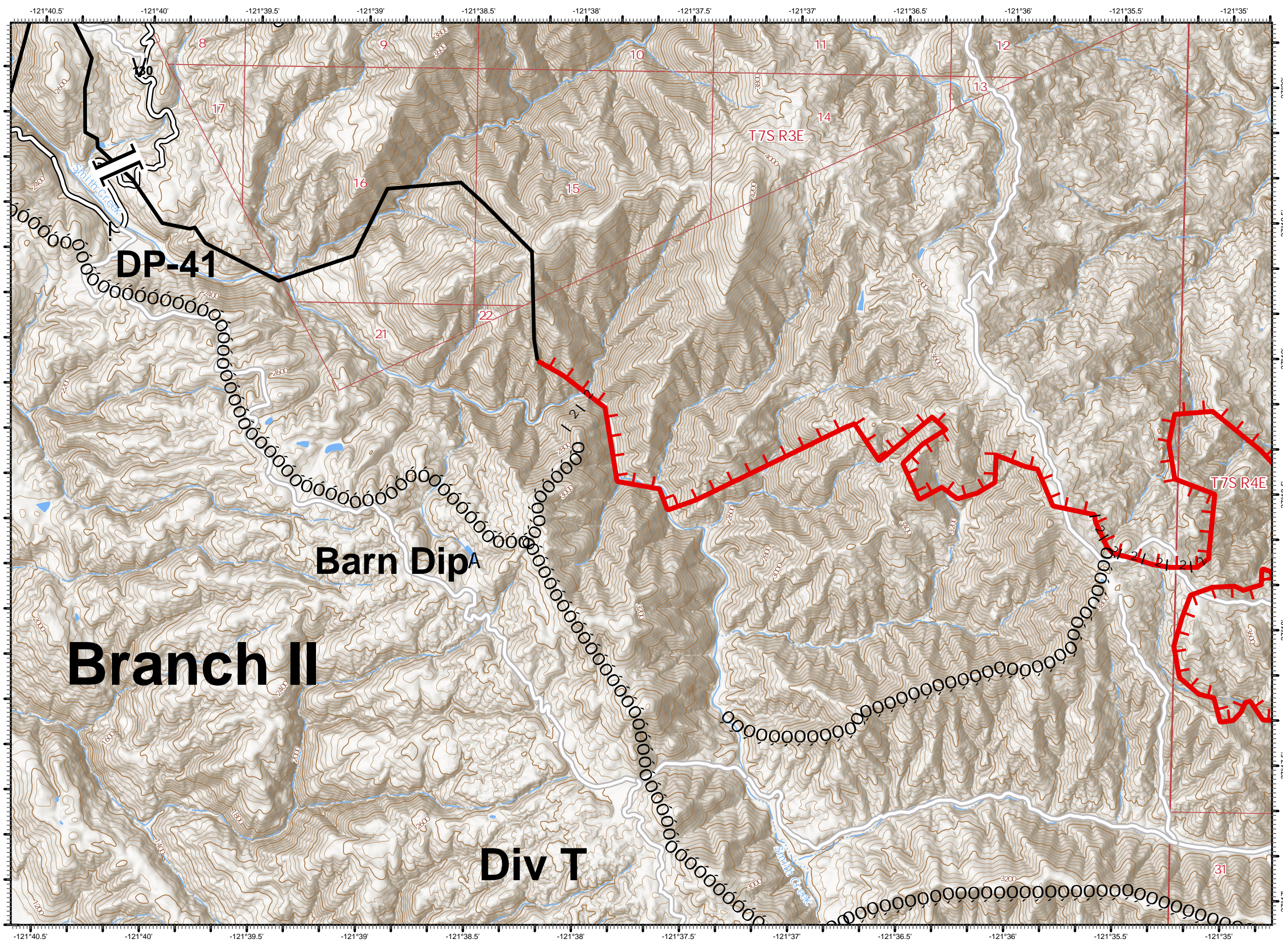


DISCLAIMER:  
The displayed incident data is approximate and should only be used for informational purposes. The information contained in supporting base layers was generated from GIS data maintained by different sources and agencies and is not necessarily accurate to mapping, surveying, or engineering standards.

1:24,000  
0 0.5  
Miles



8/29/2020  
0044 Hours



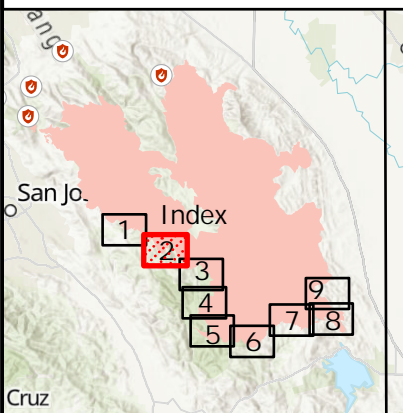


# IAP Map

SCU Lightning Complex  
BRANCH II  
CA SCU 005740  
8/29/2020

Page: 2

- A Dip Site
- Uncontrolled Fire Edge
- Completed Dozer Line
- Other Incident Roads

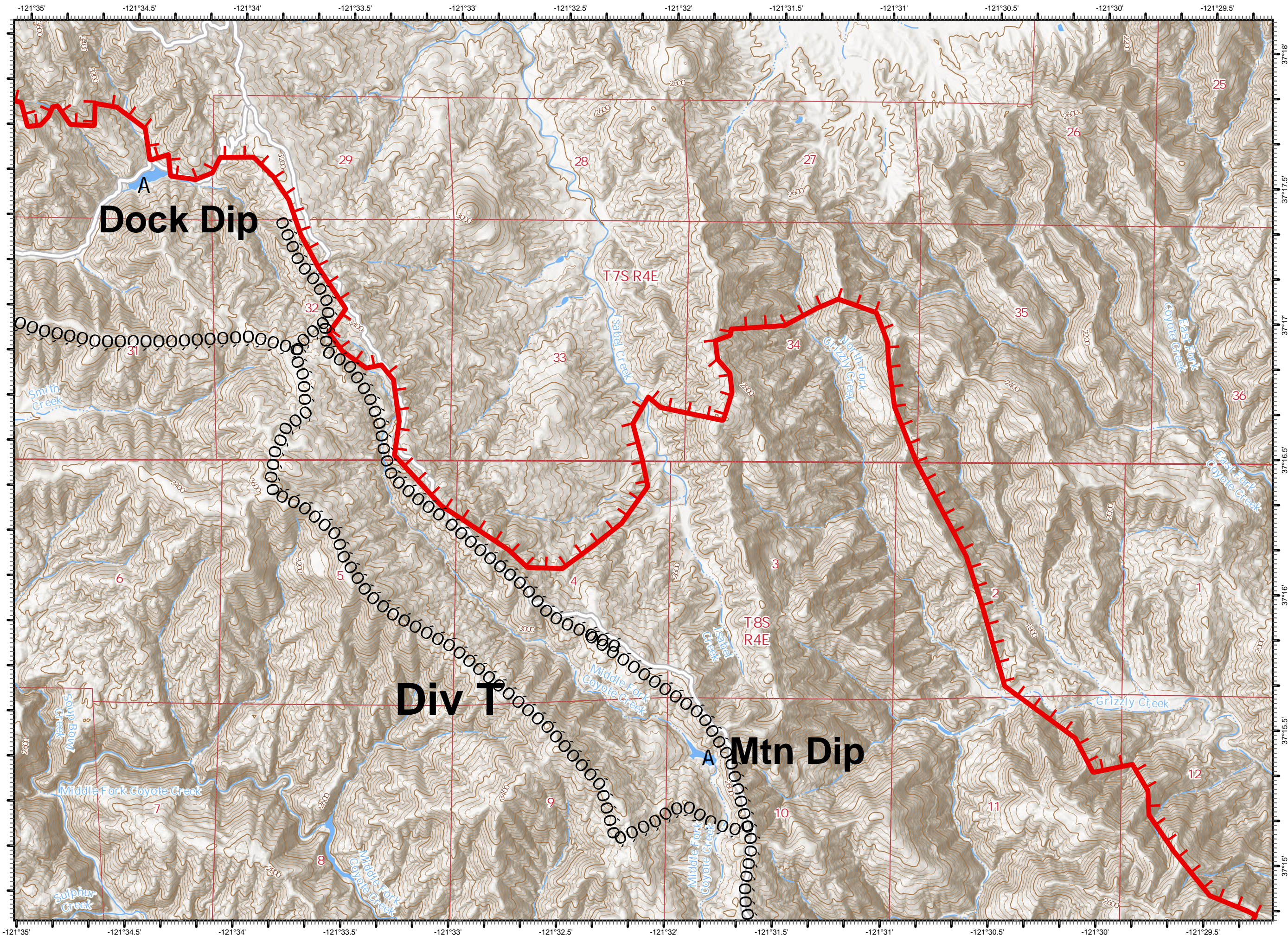


DISCLAIMER:  
The displayed incident data is approximate and should only be used for informational purposes. The information contained in supporting base layers was generated from GIS data maintained by different sources and agencies and is not necessarily accurate to mapping, surveying, or engineering standards.

1:24,000



8/29/2020  
0044 Hours


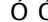



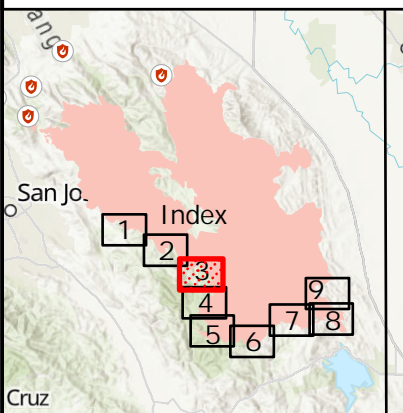


# IAP Map

SCU Lightning Complex  
BRANCH II  
CA SCU 005740  
8/29/2020

Page: 3

-  Uncontrolled Fire Edge
-  Completed Dozer Line
-  Other Incident Roads

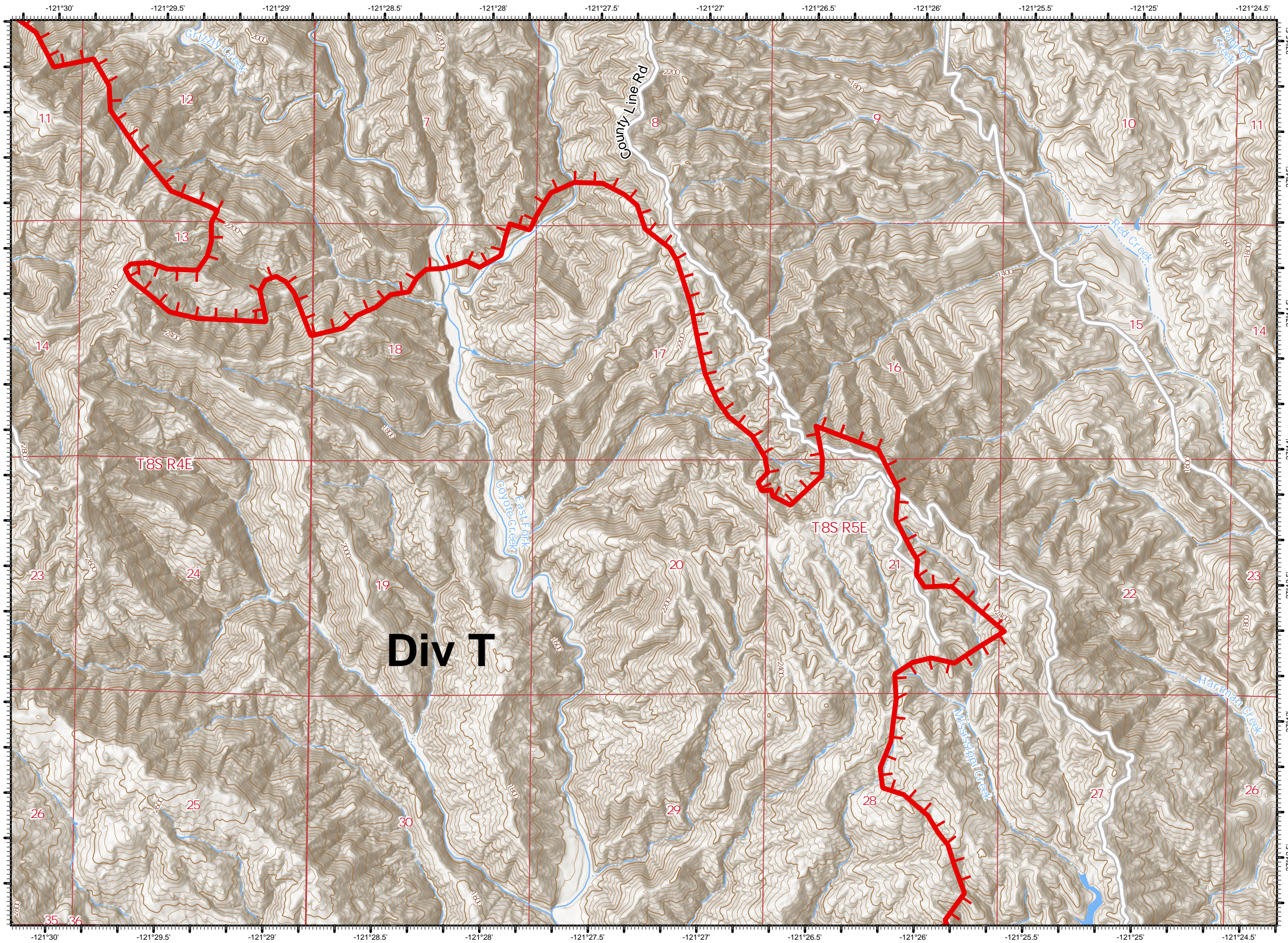


DISCLAIMER:  
The displayed incident data is approximate and should only be used for informational purposes. The information contained in supporting base layers was generated from GIS data maintained by different sources and agencies and is not necessarily accurate to mapping, surveying, or engineering standards.

1:24,000



8/29/2020  
0045 Hours



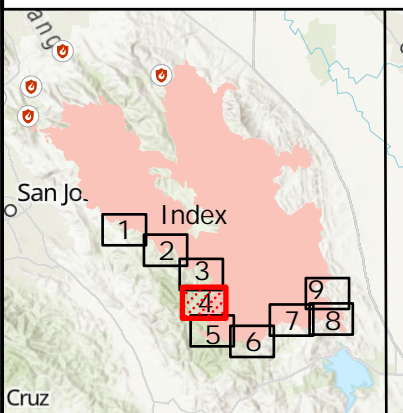


# IAP Map

SCU Lightning Complex  
BRANCH II  
CA SCU 005740  
8/29/2020

Page: 4

- Division Break
- Uncontrolled Fire Edge
- Completed Dozer Line
- Other Incident Roads

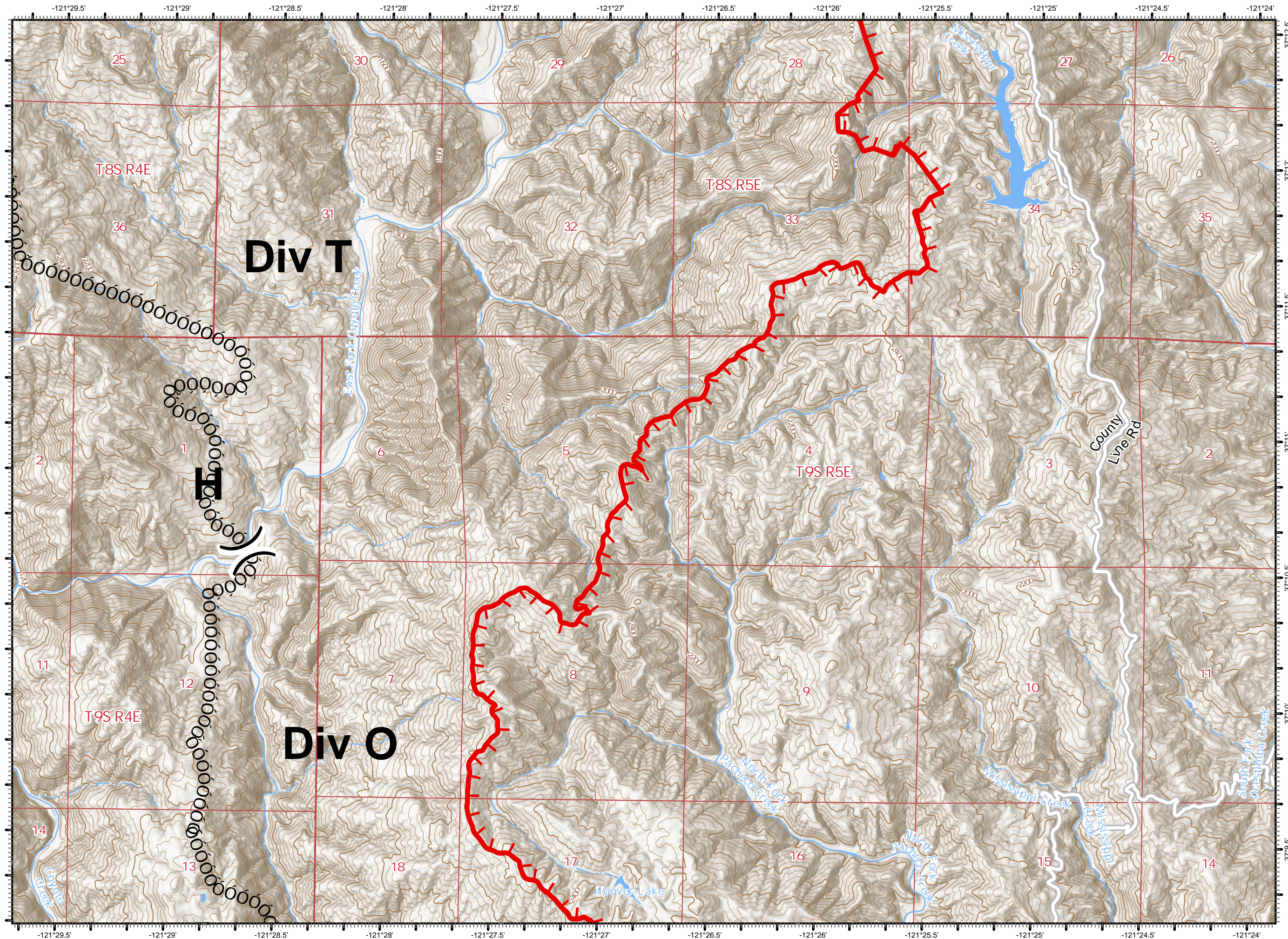


DISCLAIMER:  
The displayed incident data is approximate and should only be used for informational purposes. The information contained in supporting base layers was generated from GIS data maintained by different sources and agencies and is not necessarily accurate to mapping, surveying, or engineering standards.

1:24,000



8/29/2020  
0045 Hours



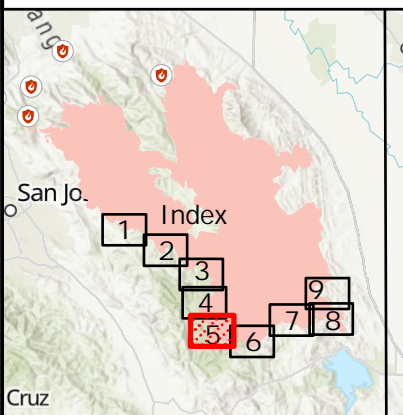


# IAP Map

SCU Lightning Complex  
BRANCH II  
CA SCU 005740  
8/29/2020

Page: 5

- Division Break
- Uncontrolled Fire Edge
- Contained Line
- Completed Dozer Line
- Other Incident Roads

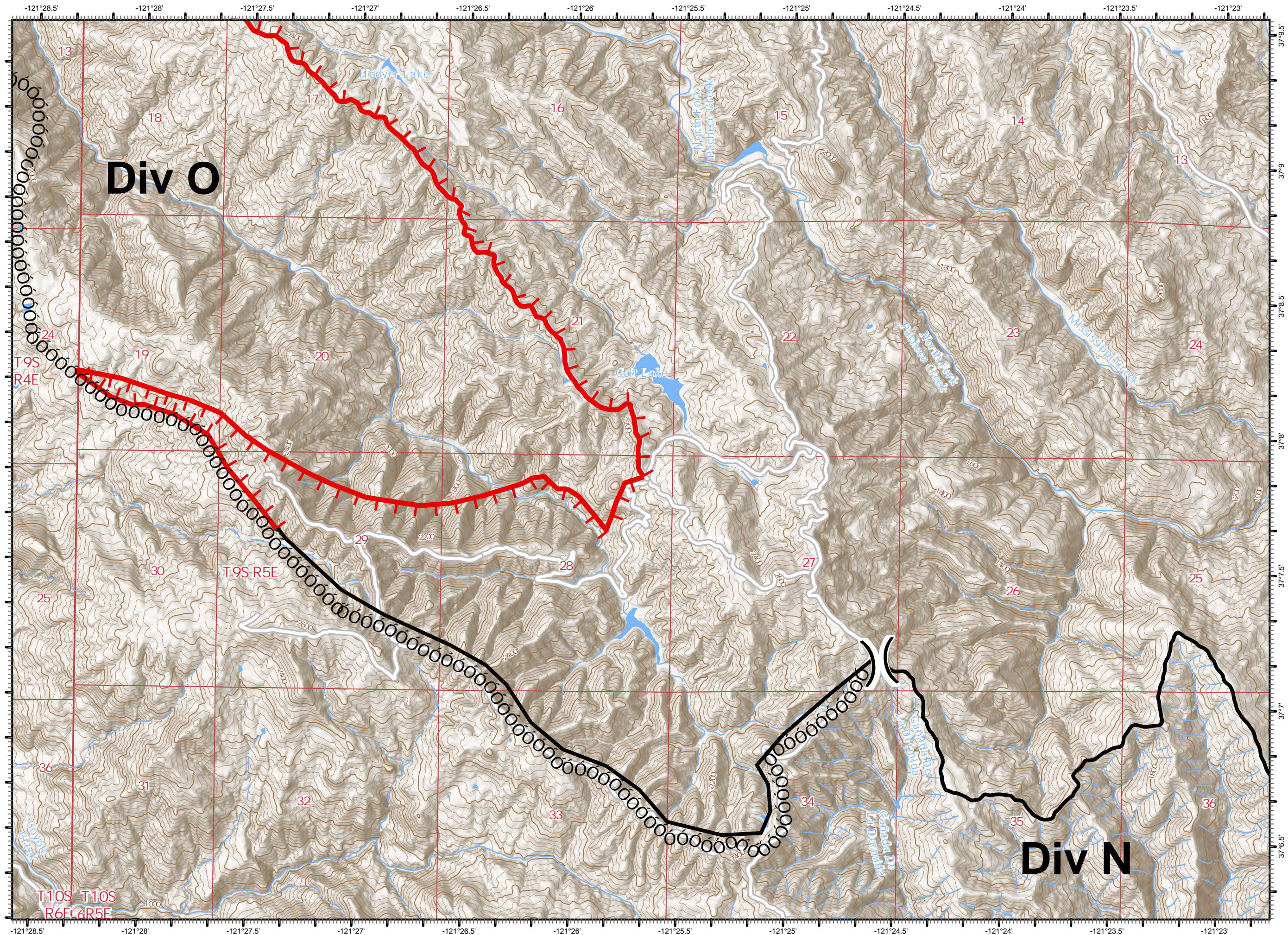


DISCLAIMER:  
The displayed incident data is approximate and should only be used for informational purposes. The information contained in supporting base layers was generated from GIS data maintained by different sources and agencies and is not necessarily accurate to mapping, surveying, or engineering standards.

1:24,000



8/29/2020  
0046 Hours



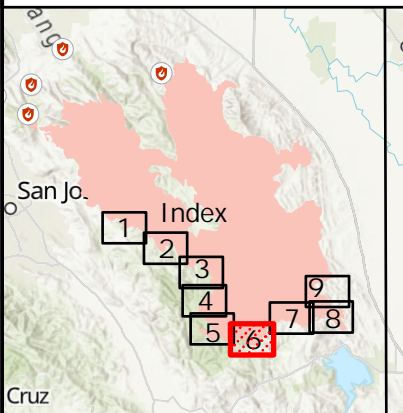


# IAP Map

SCU Lightning Complex  
BRANCH II  
CA SCU 005740  
8/29/2020

Page: 6

- ! Drop Point
- ) Division Break
- Contained Line
- ó ó Completed Dozer Line
- Other Incident Roads

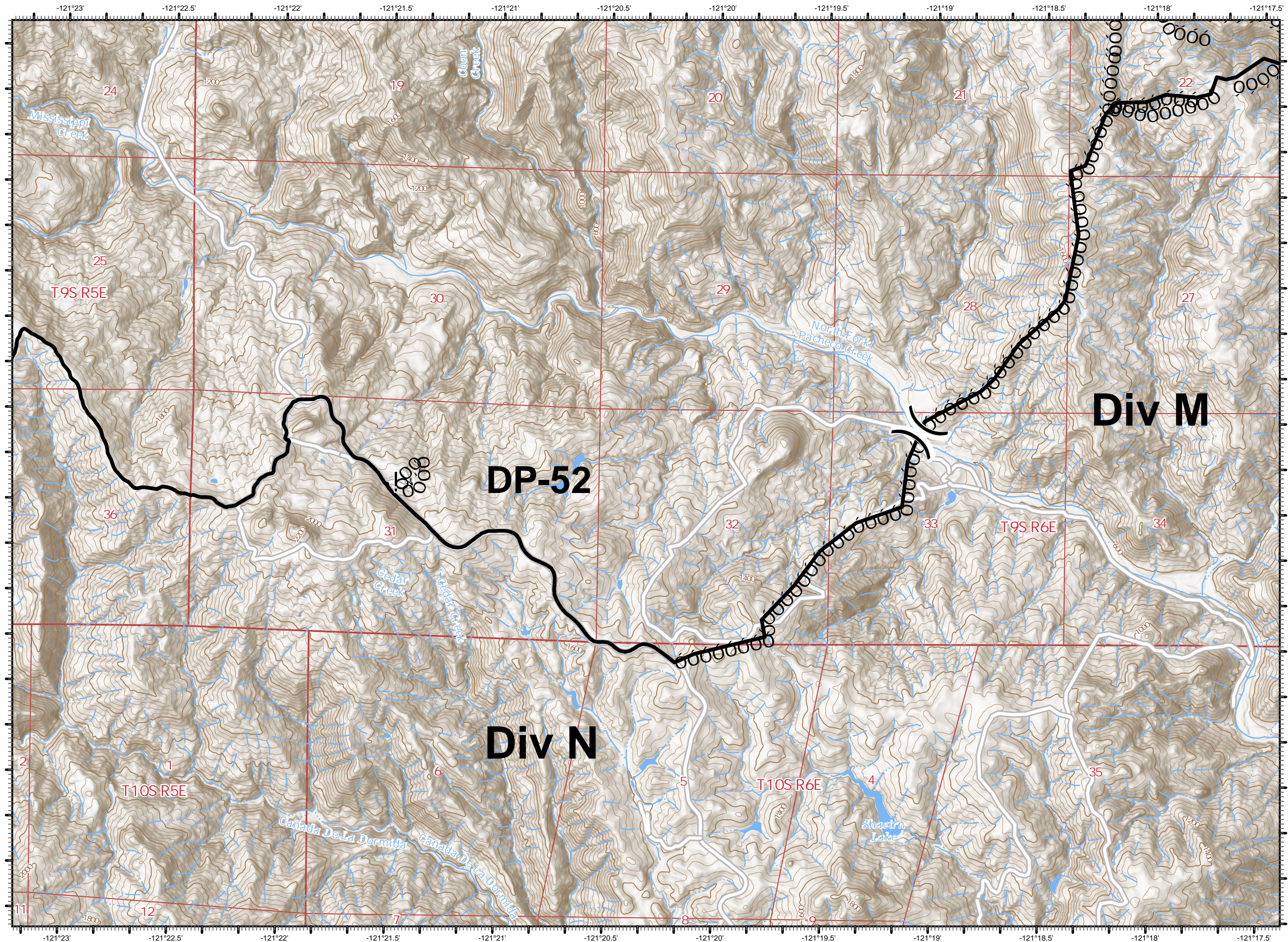


DISCLAIMER:  
The displayed incident data is approximate and should only be used for informational purposes. The information contained in supporting base layers was generated from GIS data maintained by different sources and agencies and is not necessarily accurate to mapping, surveying, or engineering standards.

1:24,000



8/29/2020  
0046 Hours






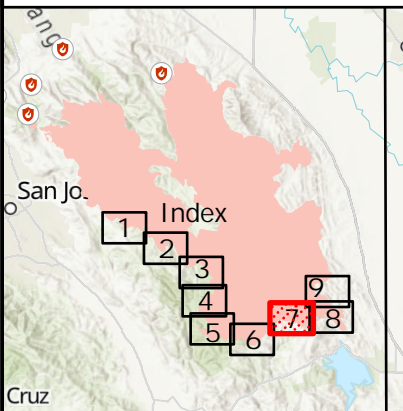


# IAP Map

SCU Lightning Complex  
BRANCH II  
CA SCU 005740  
8/29/2020

Page: 7

-  Contained Line
-  Completed Dozer Line
-  Other Incident Roads

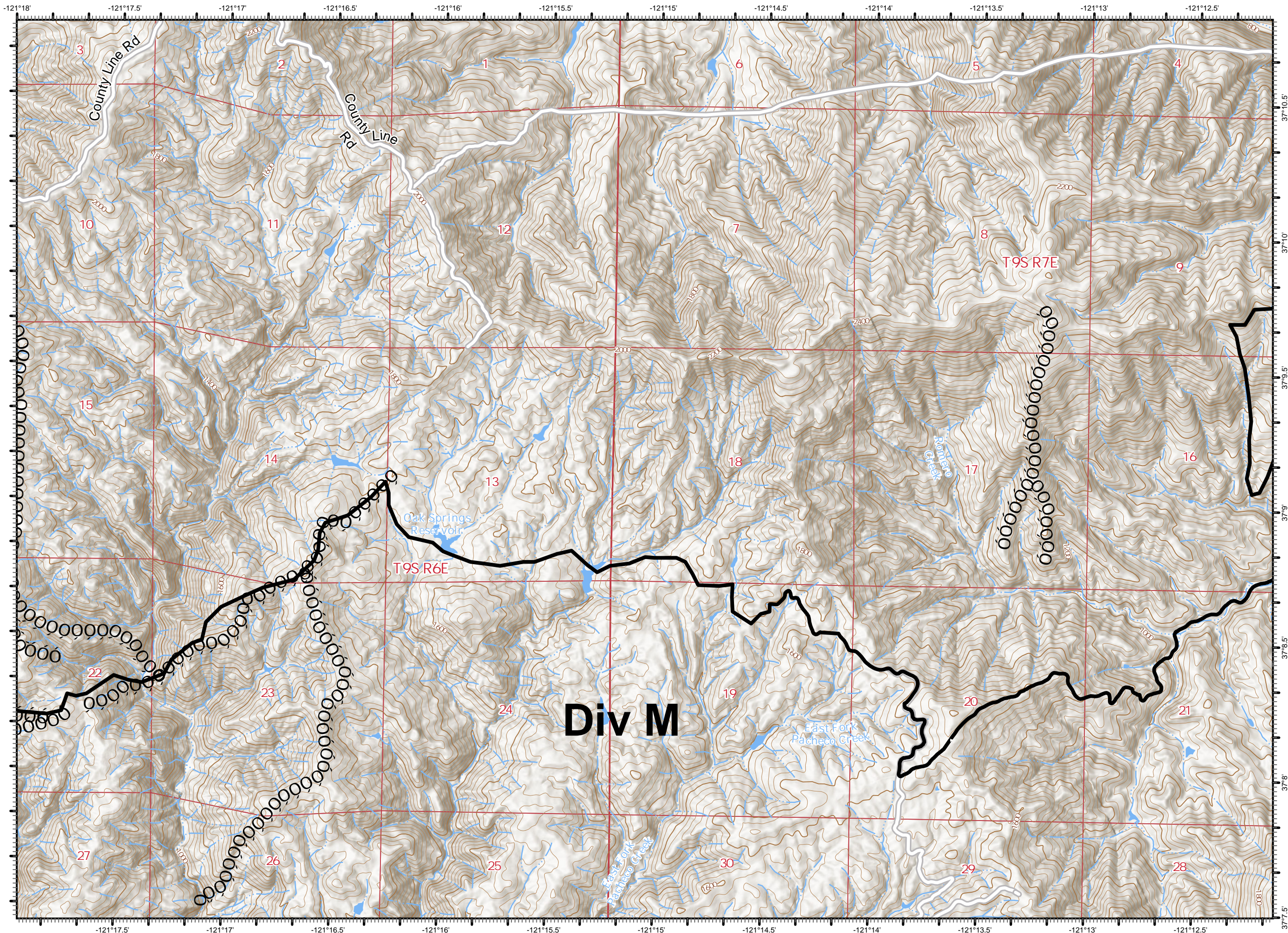


DISCLAIMER:  
The displayed incident data is approximate and should only be used for informational purposes. The information contained in supporting base layers was generated from GIS data maintained by different sources and agencies and is not necessarily accurate to mapping, surveying, or engineering standards.

1:24,000



8/29/2020  
0047 Hours


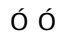




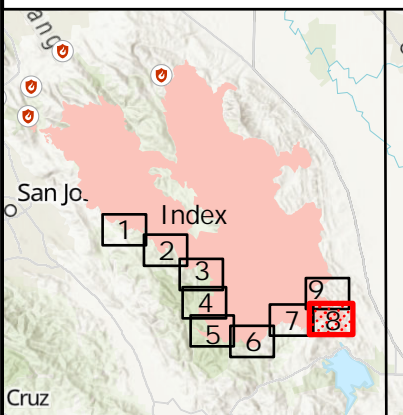


# IAP Map

SCU Lightning Complex  
BRANCH II  
CA SCU 005740  
8/29/2020

Page: 8

-  Contained Line
-  Completed Dozer Line
-  Completed Hand Line
-  Other Incident Roads

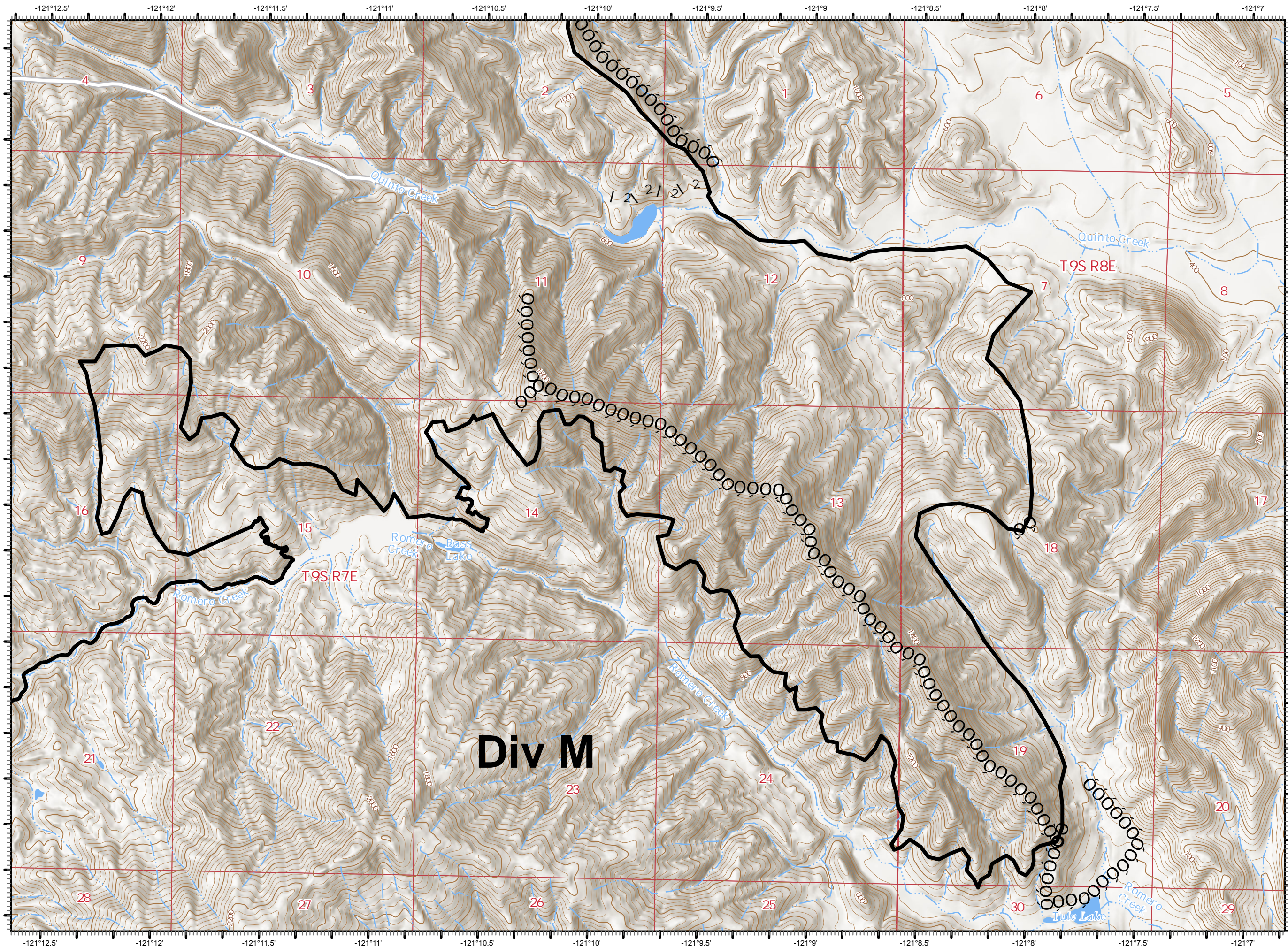


DISCLAIMER:  
The displayed incident data is approximate and should only be used for informational purposes. The information contained in supporting base layers was generated from GIS data maintained by different sources and agencies and is not necessarily accurate to mapping, surveying, or engineering standards.

1:24,000



8/29/2020  
0047 Hours



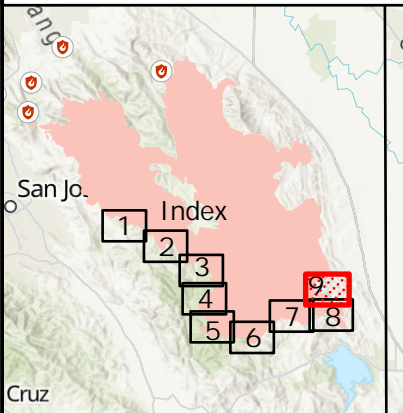


# IAP Map

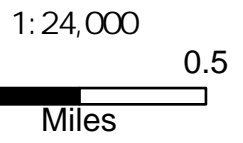
SCU Lightning Complex  
BRANCH II  
CA SCU 005740  
8/29/2020

Page: 9

- [[ Branch Break
- Contained Line
- ó ó Completed Dozer Line
- | 2 Completed Hand Line
- Other Incident Roads



DISCLAIMER:  
The displayed incident data is approximate and should only be used for informational purposes. The information contained in supporting base layers was generated from GIS data maintained by different sources and agencies and is not necessarily accurate to mapping, surveying, or engineering standards.



8/29/2020  
0048 Hours

