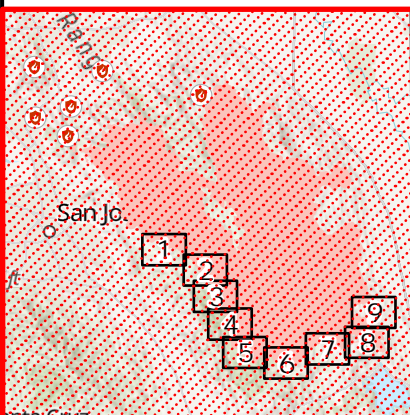


IAP Map

SCU Lightning Complex
BRANCH II
CA SCU 005740
9/2/2020

Page: Index

- Camp
- A Dip Site
- ! Drop Point
- ⊙ Helibase
- ⊙ Helispot
- ⊙ Incident Command Post
- ⊙ Mobile Weather Unit
- Repeater
- ⚡ Spot Fire
- ⊙ Restricted Water Source
- ⊙ Fire Point
-) (Division Break
- || Branch Break
- Uncontrolled Fire Edge
- Contained Line
- Completed Dozer Line
- | 2 Completed Hand Line
- Wildfire Daily Fire Perimeter

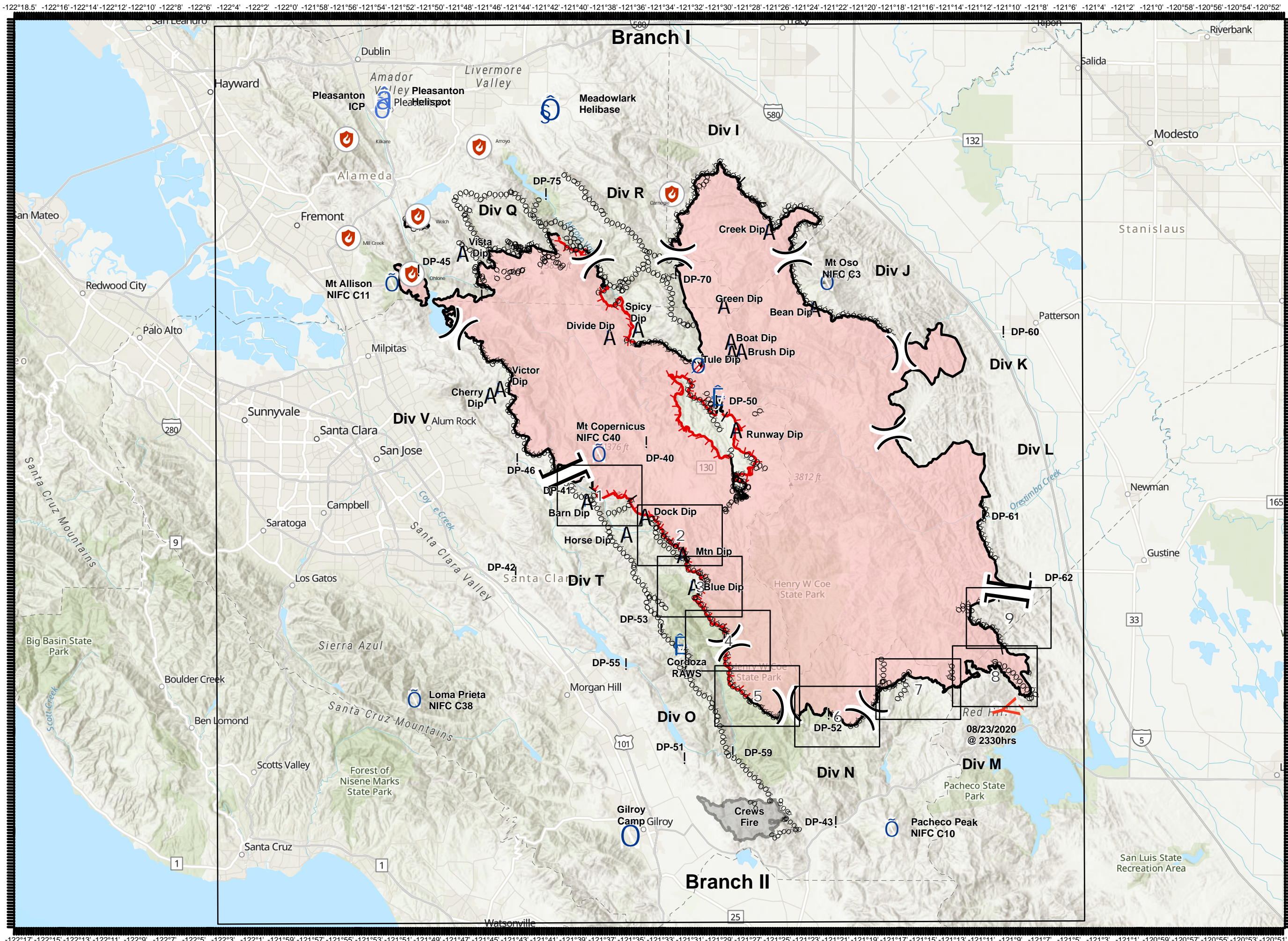


DISCLAIMER:
The displayed incident data is approximate and should only be used for informational purposes. The information contained in supporting base layers was generated from GIS data maintained by different sources and agencies and is not necessarily accurate to mapping, surveying, or engineering standards.

1:360,000



9/1/2020
2025 Hours



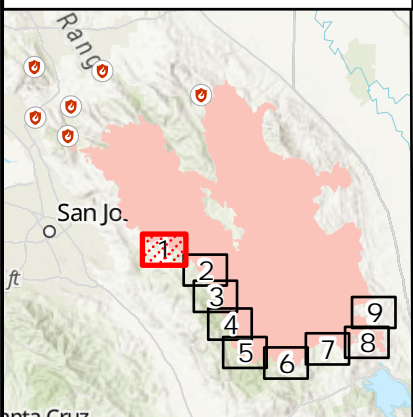
-122°17' -122°15' -122°13' -122°11' -122°9' -122°7' -122°5' -122°3' -122°1' -121°59' -121°57' -121°55' -121°53' -121°51' -121°49' -121°47' -121°45' -121°43' -121°41' -121°39' -121°37' -121°35' -121°33' -121°31' -121°29' -121°27' -121°25' -121°23' -121°21' -121°19' -121°17' -121°15' -121°13' -121°11' -121°9' -121°7' -121°5' -121°3' -121°1' -120°59' -120°57' -120°55' -120°53' -120°51'

IAP Map

SCU Lightning Complex
BRANCH II
CA SCU 005740
9/2/2020

Page: 1

- A Dip Site
- ! Drop Point
- || Branch Break
- ▬ Uncontrolled Fire Edge
- ▬ Contained Line
- ó ó Completed Dozer Line
- | 2 Completed Hand Line

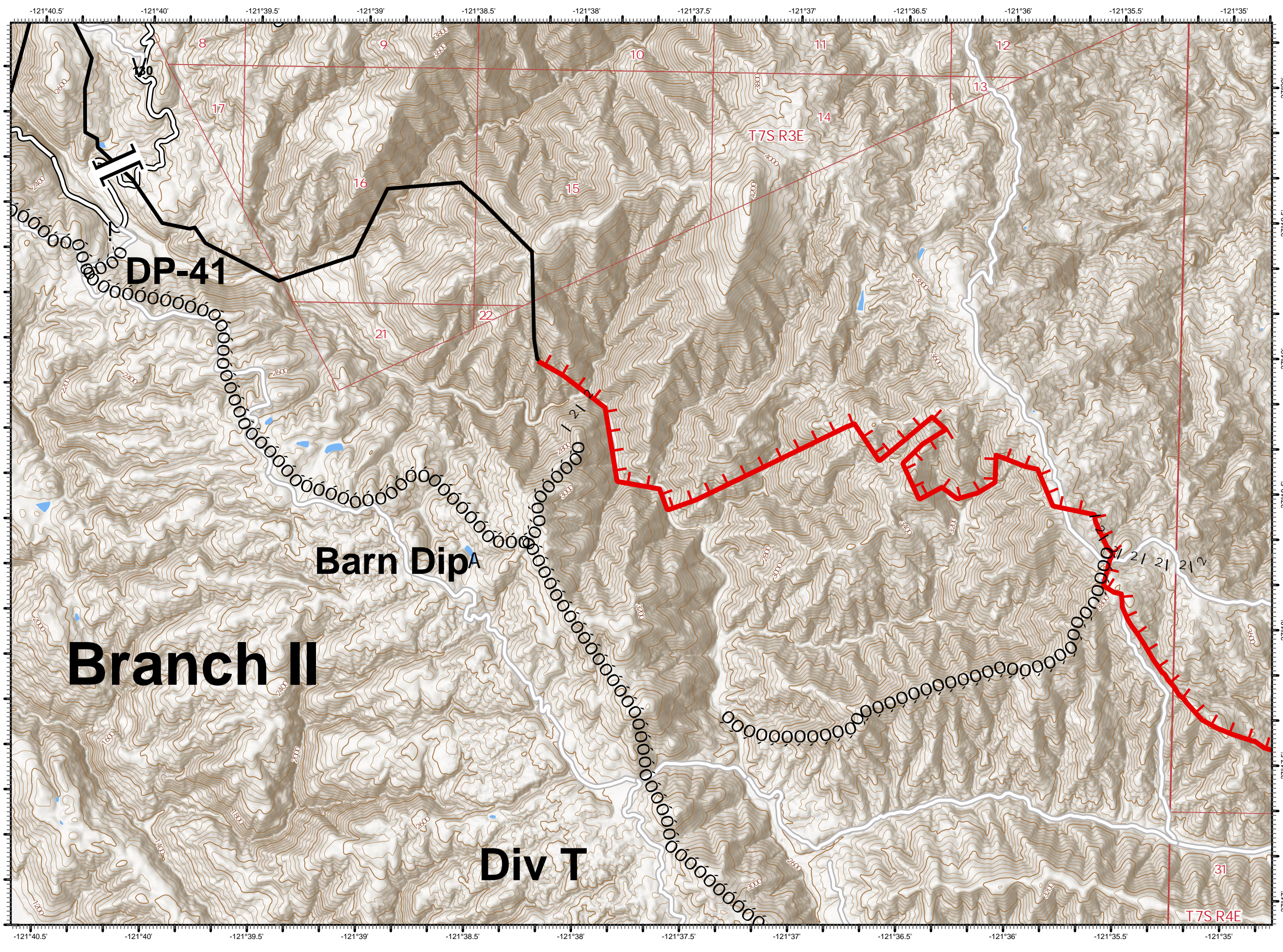


DISCLAIMER:
The displayed incident data is approximate and should only be used for informational purposes. The information contained in supporting base layers was generated from GIS data maintained by different sources and agencies and is not necessarily accurate to mapping, surveying, or engineering standards.

1:24,000



9/1/2020
2025 Hours



IAP Map

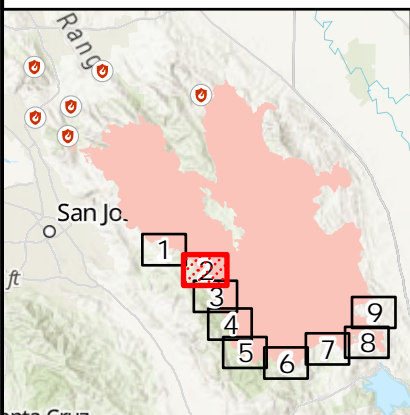
SCU Lightning Complex
BRANCH II

CA SCU 005740

9/2/2020

Page: 2

- A Dip Site
- Uncontrolled Fire Edge
- Completed Dozer Line

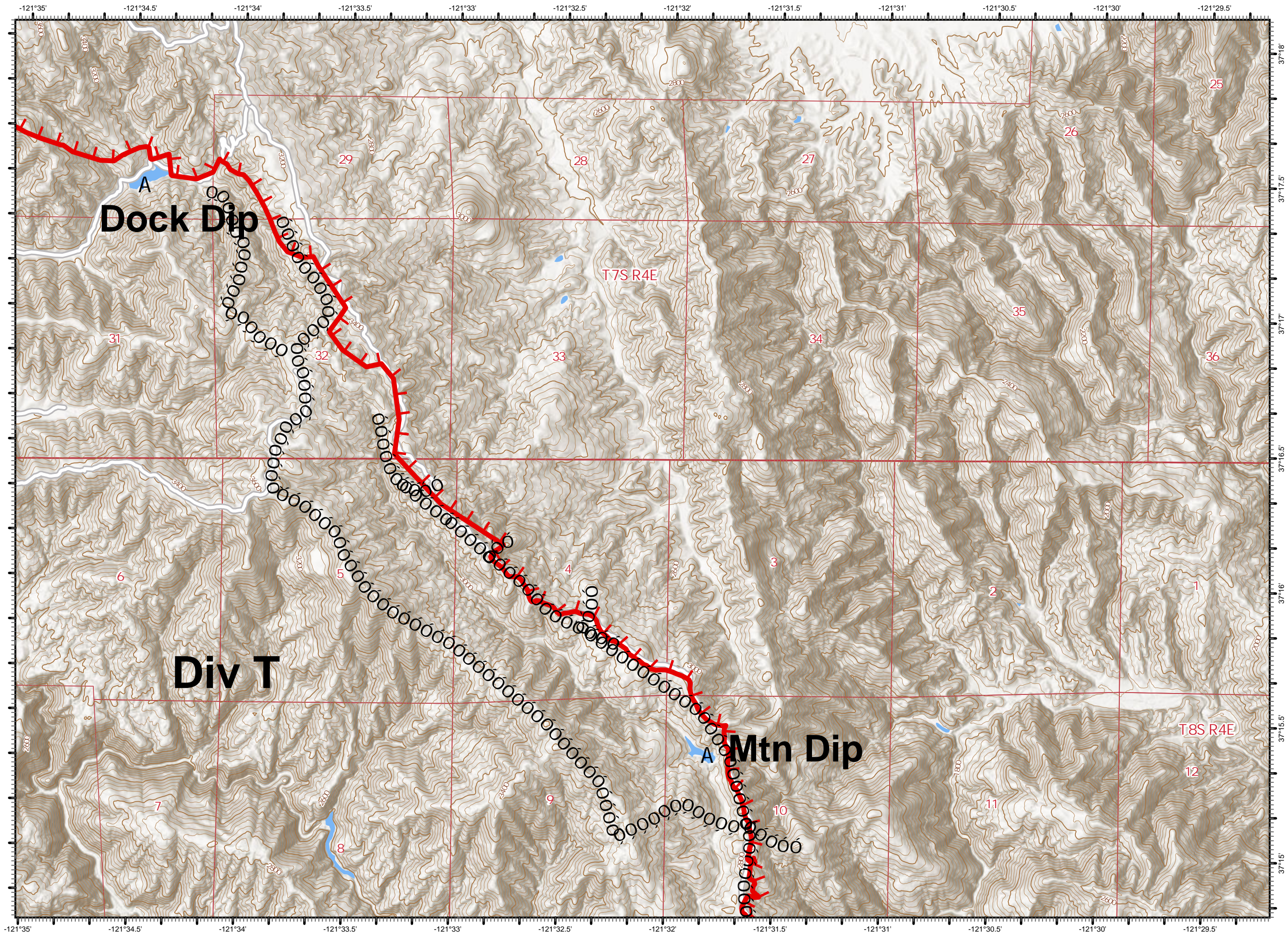


DISCLAIMER:
The displayed incident data is approximate and should only be used for informational purposes. The information contained in supporting base layers was generated from GIS data maintained by different sources and agencies and is not necessarily accurate to mapping, surveying, or engineering standards.

1:24,000



9/1/2020
2025 Hours



IAP Map

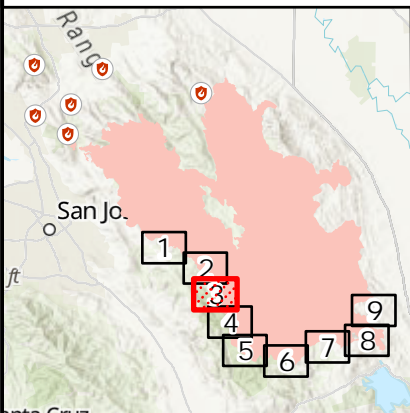
SCU Lightning Complex
BRANCH II

CA SCU 005740

9/2/2020

Page: 3

- A Dip Site
- Uncontrolled Fire Edge
- Completed Dozer Line

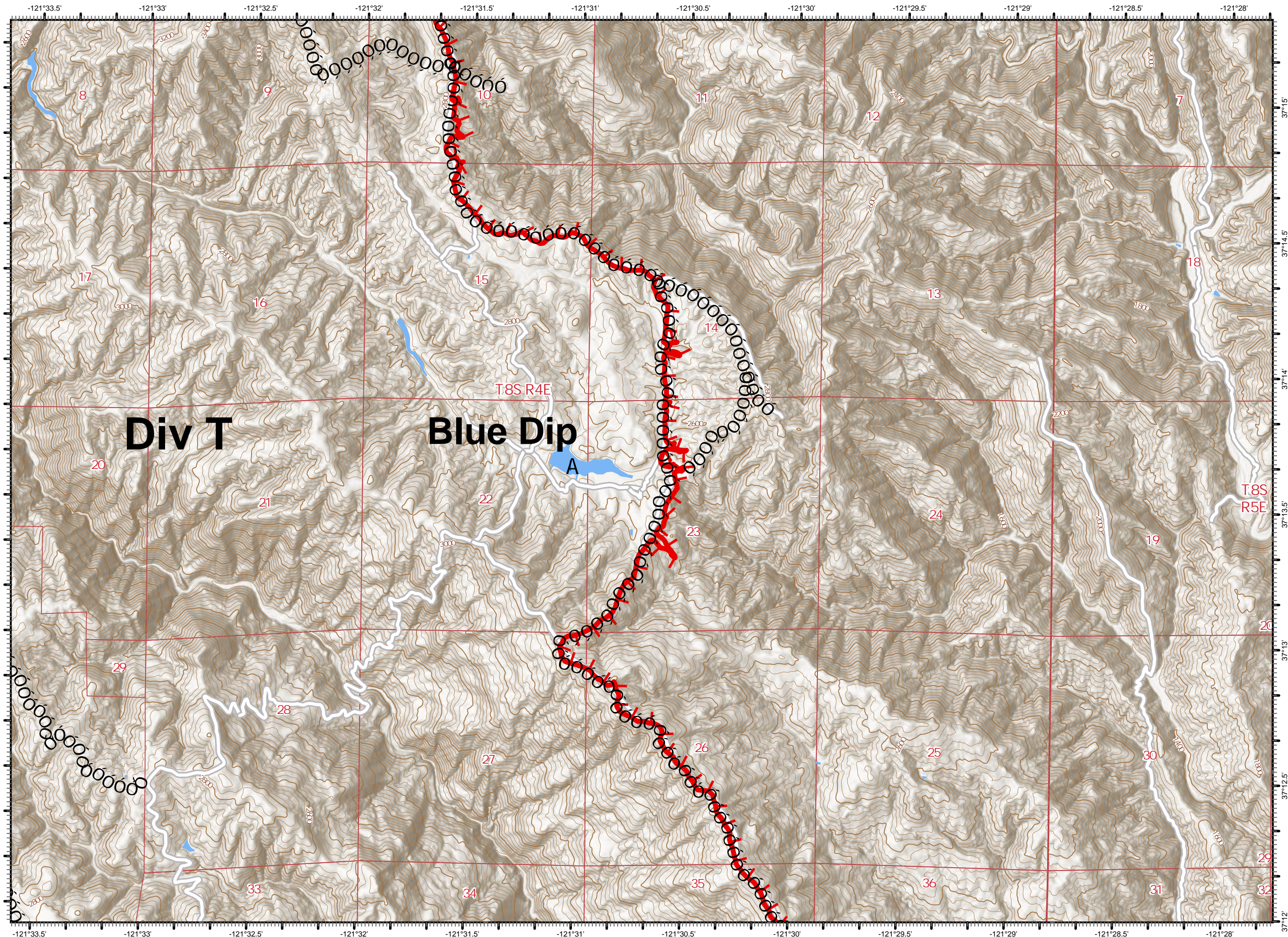


DISCLAIMER:
The displayed incident data is approximate and should only be used for informational purposes. The information contained in supporting base layers was generated from GIS data maintained by different sources and agencies and is not necessarily accurate to mapping, surveying, or engineering standards.

1:24,000



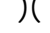

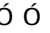
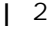
9/1/2020
2025 Hours

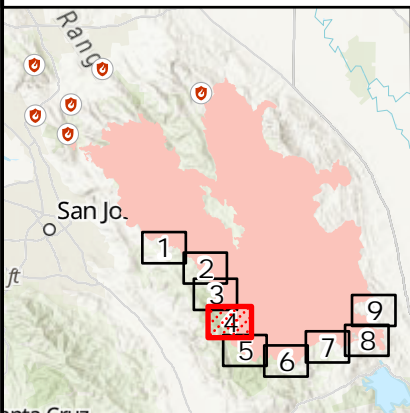


IAP Map

SCU Lightning Complex
BRANCH II
CA SCU 005740
9/2/2020

Page: 4

-  Division Break
-  Uncontrolled Fire Edge
-  Completed Dozer Line
-  Completed Hand Line

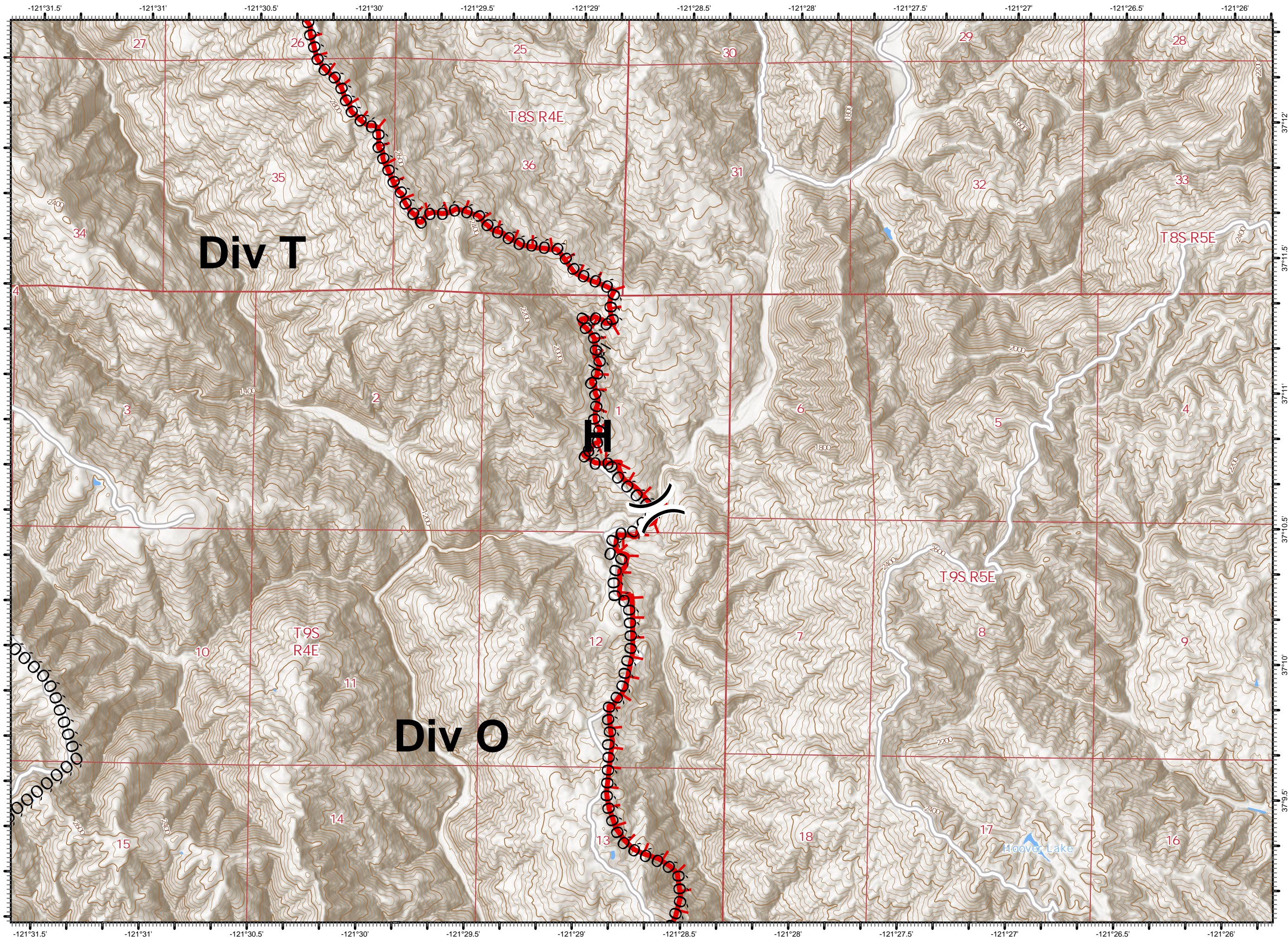


DISCLAIMER:
The displayed incident data is approximate and should only be used for informational purposes. The information contained in supporting base layers was generated from GIS data maintained by different sources and agencies and is not necessarily accurate to mapping, surveying, or engineering standards.

1:24,000



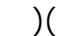


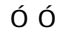
9/1/2020
2026 Hours

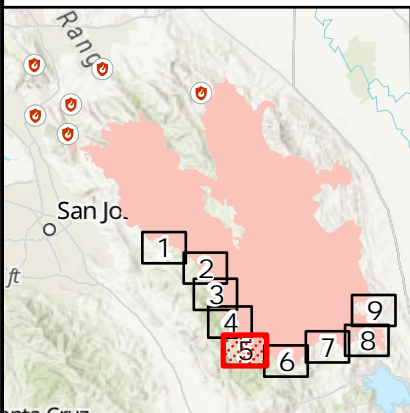


IAP Map

SCU Lightning Complex
BRANCH II
CA SCU 005740
9/2/2020

Page: 5

-  Division Break
-  Uncontrolled Fire Edge
-  Contained Line
-  Completed Dozer Line

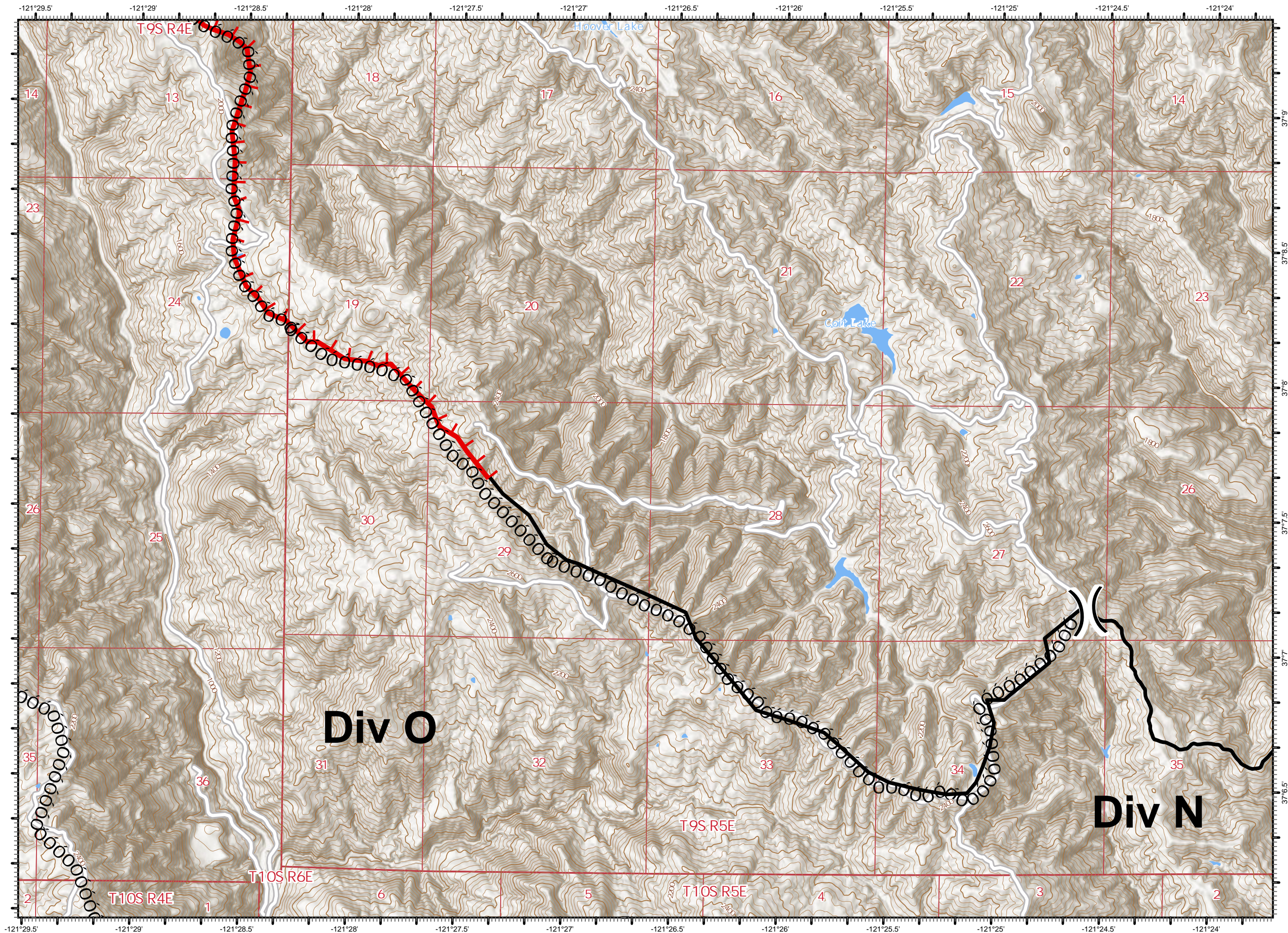


DISCLAIMER:
The displayed incident data is approximate and should only be used for informational purposes. The information contained in supporting base layers was generated from GIS data maintained by different sources and agencies and is not necessarily accurate to mapping, surveying, or engineering standards.

1:24,000



9/1/2020
2026 Hours

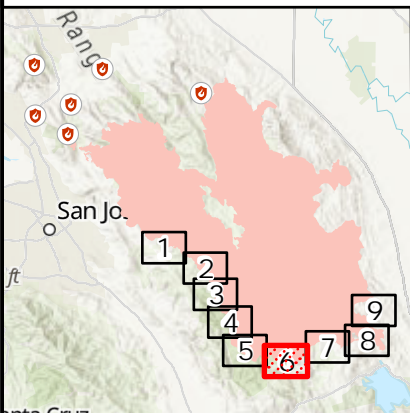


IAP Map

SCU Lightning Complex
BRANCH II
CA SCU 005740
9/2/2020

Page: 6

- ! Drop Point
-) Division Break
- Contained Line
- ó ó Completed Dozer Line

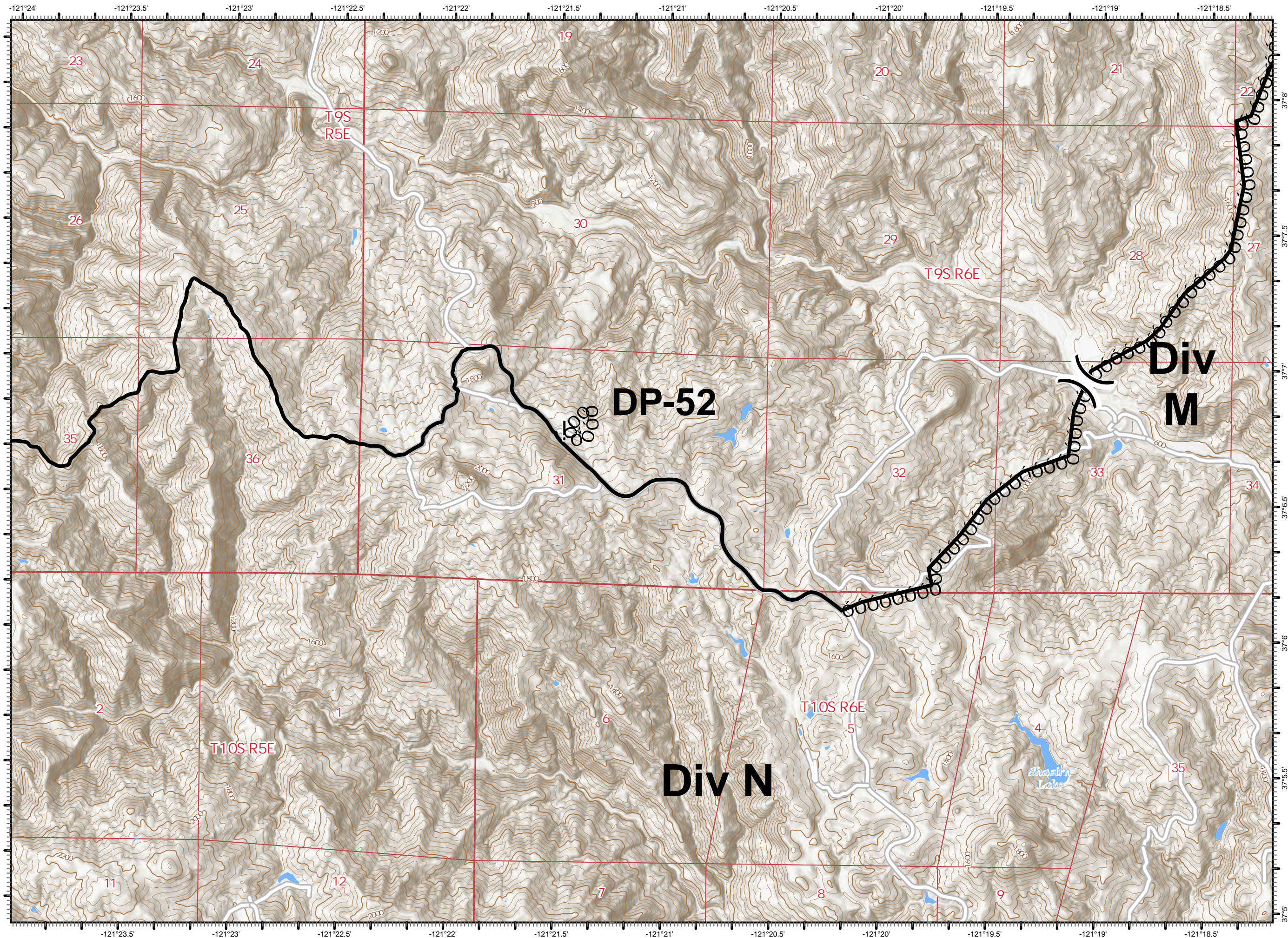


DISCLAIMER:
The displayed incident data is approximate and should only be used for informational purposes. The information contained in supporting base layers was generated from GIS data maintained by different sources and agencies and is not necessarily accurate to mapping, surveying, or engineering standards.

1:24,000




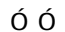
9/1/2020
2026 Hours

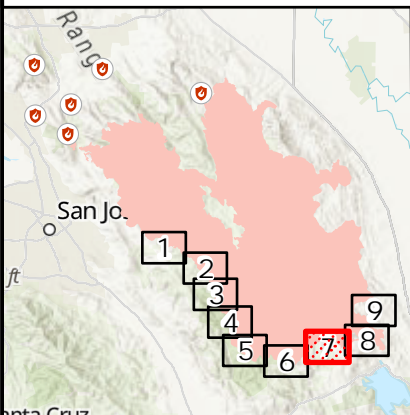


IAP Map

SCU Lightning Complex
BRANCH II
CA SCU 005740
9/2/2020

Page: 7

-  Contained Line
-  Completed Dozer Line

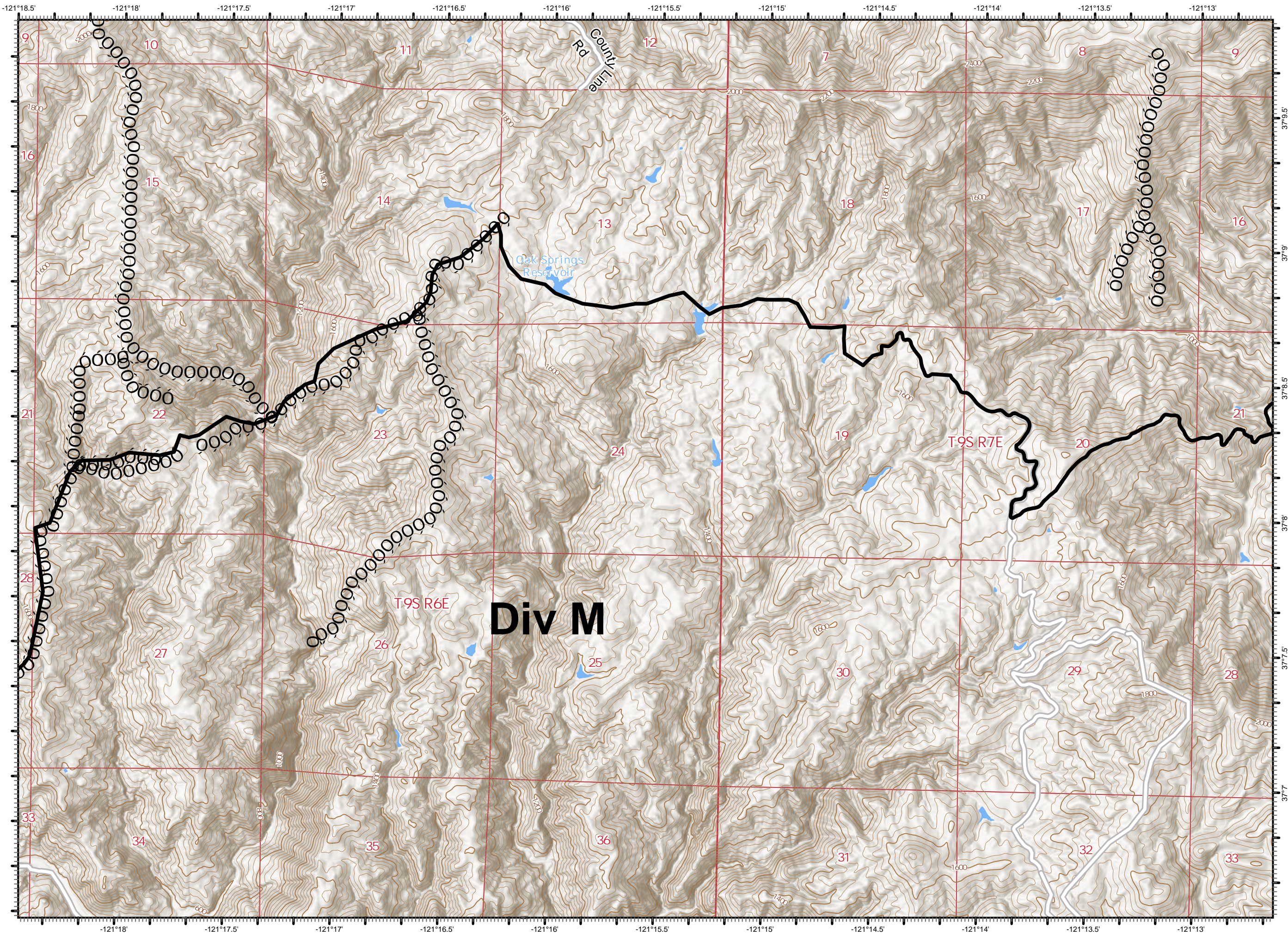


DISCLAIMER:
The displayed incident data is approximate and should only be used for informational purposes. The information contained in supporting base layers was generated from GIS data maintained by different sources and agencies and is not necessarily accurate to mapping, surveying, or engineering standards.

1:24,000





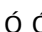

9/1/2020
2027 Hours

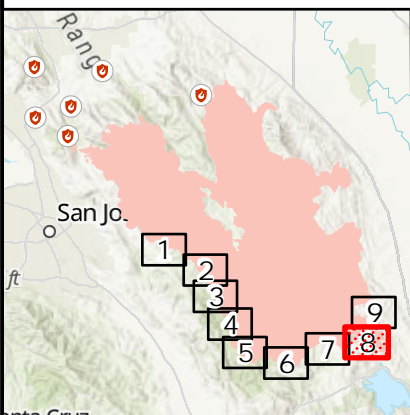


IAP Map

SCU Lightning Complex
BRANCH II
CA SCU 005740
9/2/2020

Page: 8

-  Spot Fire
-  Contained Line
-  Completed Dozer Line
-  Completed Hand Line

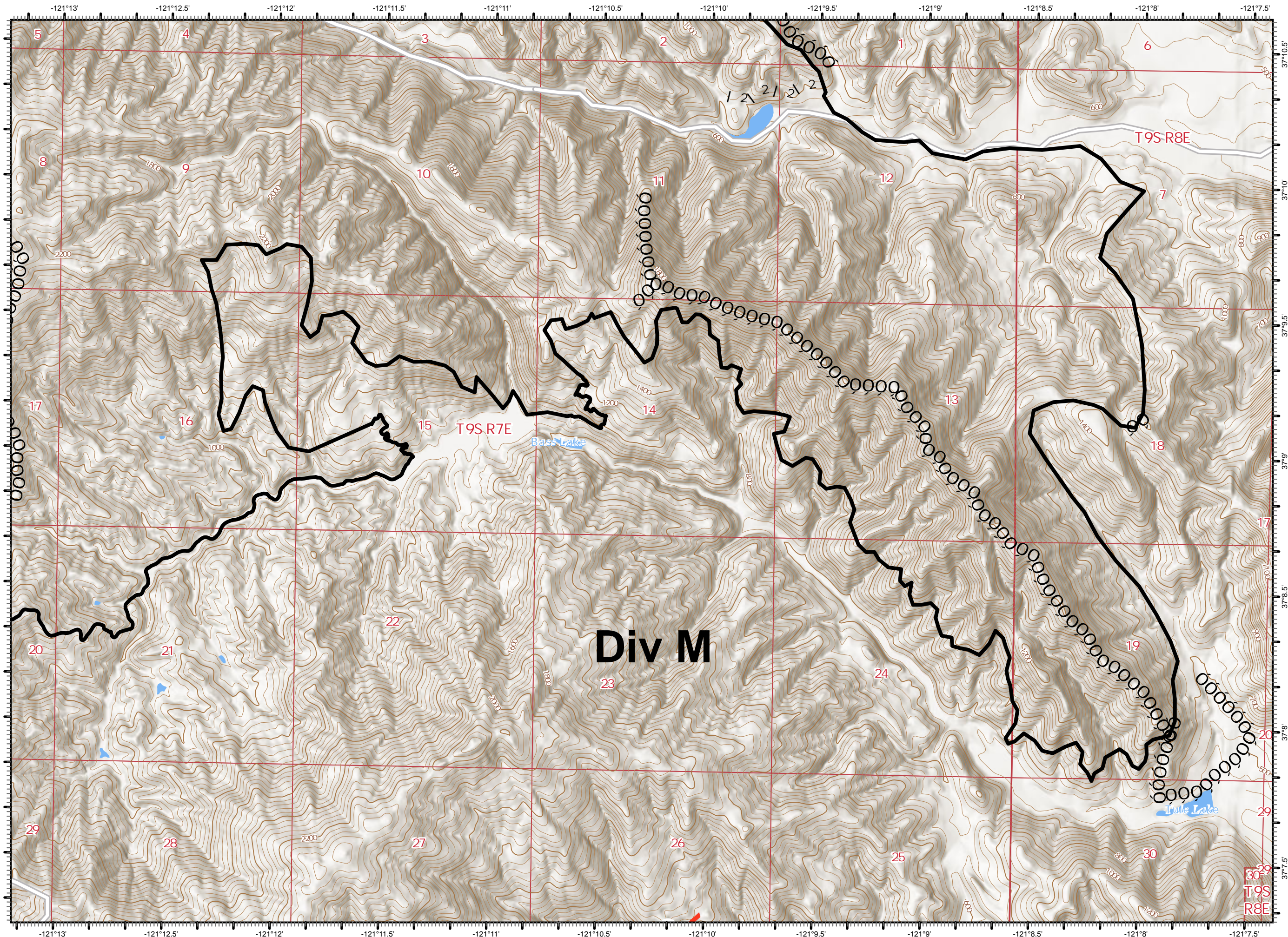


DISCLAIMER:
The displayed incident data is approximate and should only be used for informational purposes. The information contained in supporting base layers was generated from GIS data maintained by different sources and agencies and is not necessarily accurate to mapping, surveying, or engineering standards.

1:24,000



9/1/2020
2027 Hours

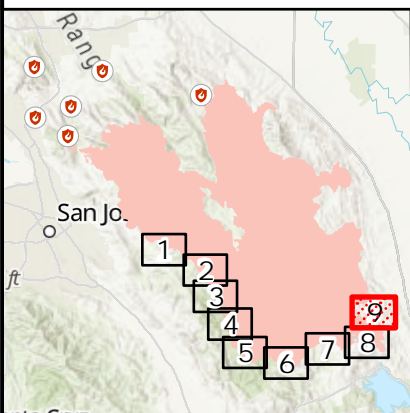


IAP Map

SCU Lightning Complex
BRANCH II
CA SCU 005740
9/2/2020

Page: 9

- [[Branch Break
- Contained Line
- ó ó Completed Dozer Line
- | 2 Completed Hand Line



DISCLAIMER:
The displayed incident data is approximate and should only be used for informational purposes. The information contained in supporting base layers was generated from GIS data maintained by different sources and agencies and is not necessarily accurate to mapping, surveying, or engineering standards.

1:24,000



Miles



9/1/2020
2027 Hours

