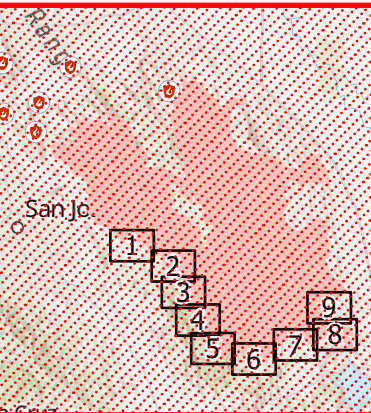


# IAP Map

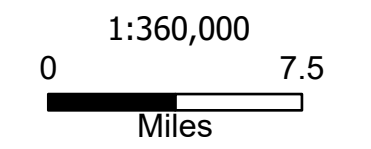
SCU Lightning Complex  
**BRANCH II**  
 CA SCU 005740  
 9/9/2020

Page: Index

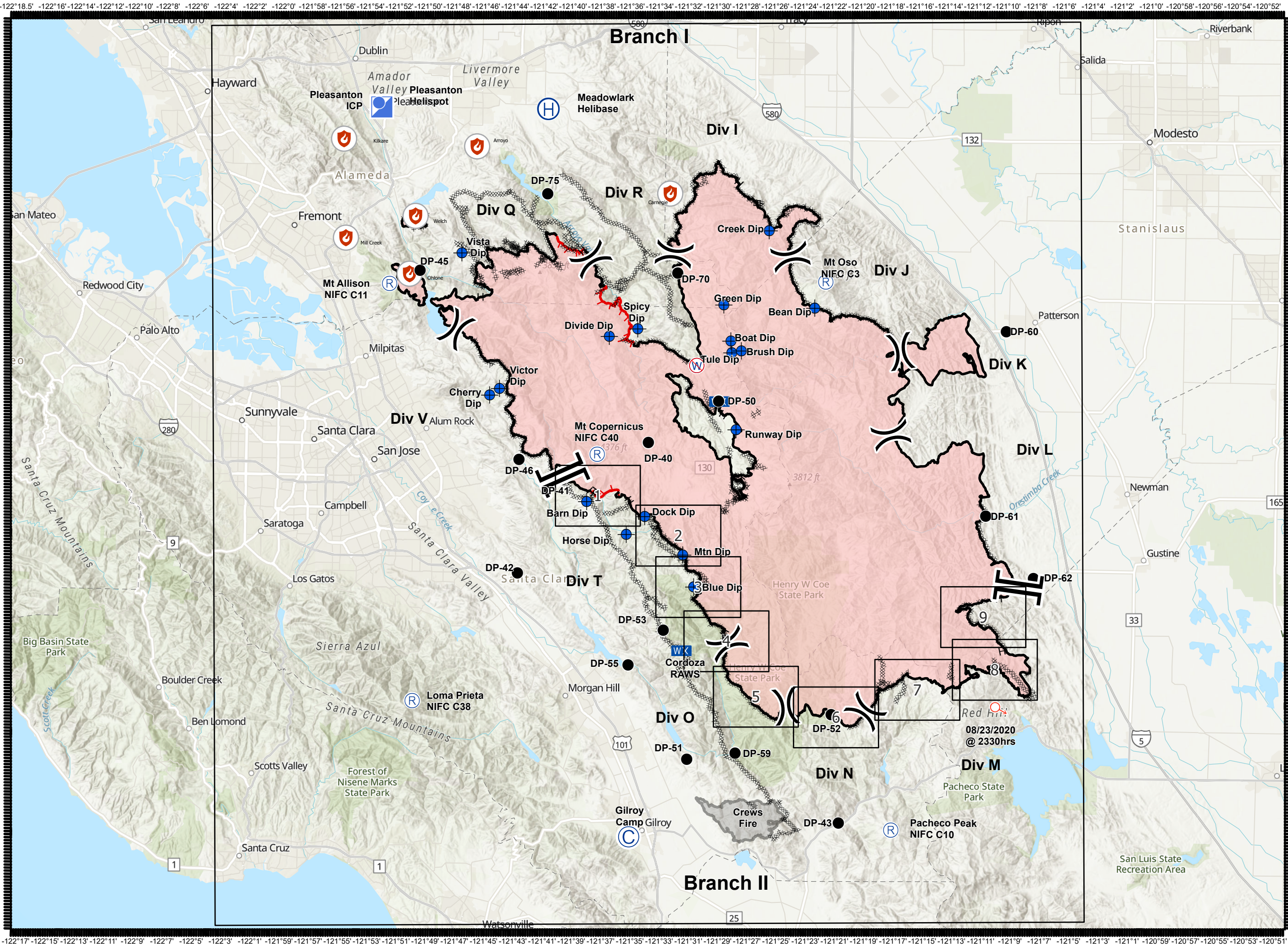
- Camp
- Dip Site
- Drop Point
- Helibase
- Helispot
- Incident Command Post
- Mobile Weather Unit
- Repeater
- Spot Fire
- Restricted Water Source
- Fire Point
- Division Break
- Branch Break
- Uncontrolled Fire Edge
- Contained Line
- Completed Dozer Line
- Completed Hand Line
- Wildfire Daily Fire Perimeter



**DISCLAIMER:**  
 The displayed incident data is approximate and should only be used for informational purposes. The information contained in supporting base layers was generated from GIS data maintained by different sources and agencies and is not necessarily accurate to mapping, surveying, or engineering standards.



9/8/2020  
 2103 Hours



-122°17' -122°15' -122°13' -122°11' -122°9' -122°7' -122°5' -122°3' -122°1' -121°59' -121°57' -121°55' -121°53' -121°51' -121°49' -121°47' -121°45' -121°43' -121°41' -121°39' -121°37' -121°35' -121°33' -121°31' -121°29' -121°27' -121°25' -121°23' -121°21' -121°19' -121°17' -121°15' -121°13' -121°11' -121°9' -121°7' -121°5' -121°3' -121°1' -120°59' -120°57' -120°55' -120°53' -120°51'






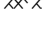
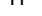
# IAP Map

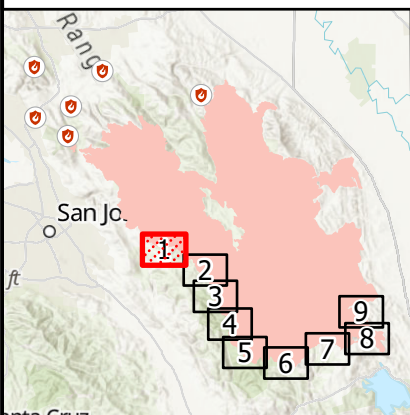
SCU Lightning Complex  
BRANCH II

CA SCU 005740

9/9/2020

Page: 1

-  Dip Site
-  Drop Point
-  Branch Break
-  Uncontrolled Fire Edge
-  Contained Line
-  Completed Dozer Line
-  Completed Hand Line

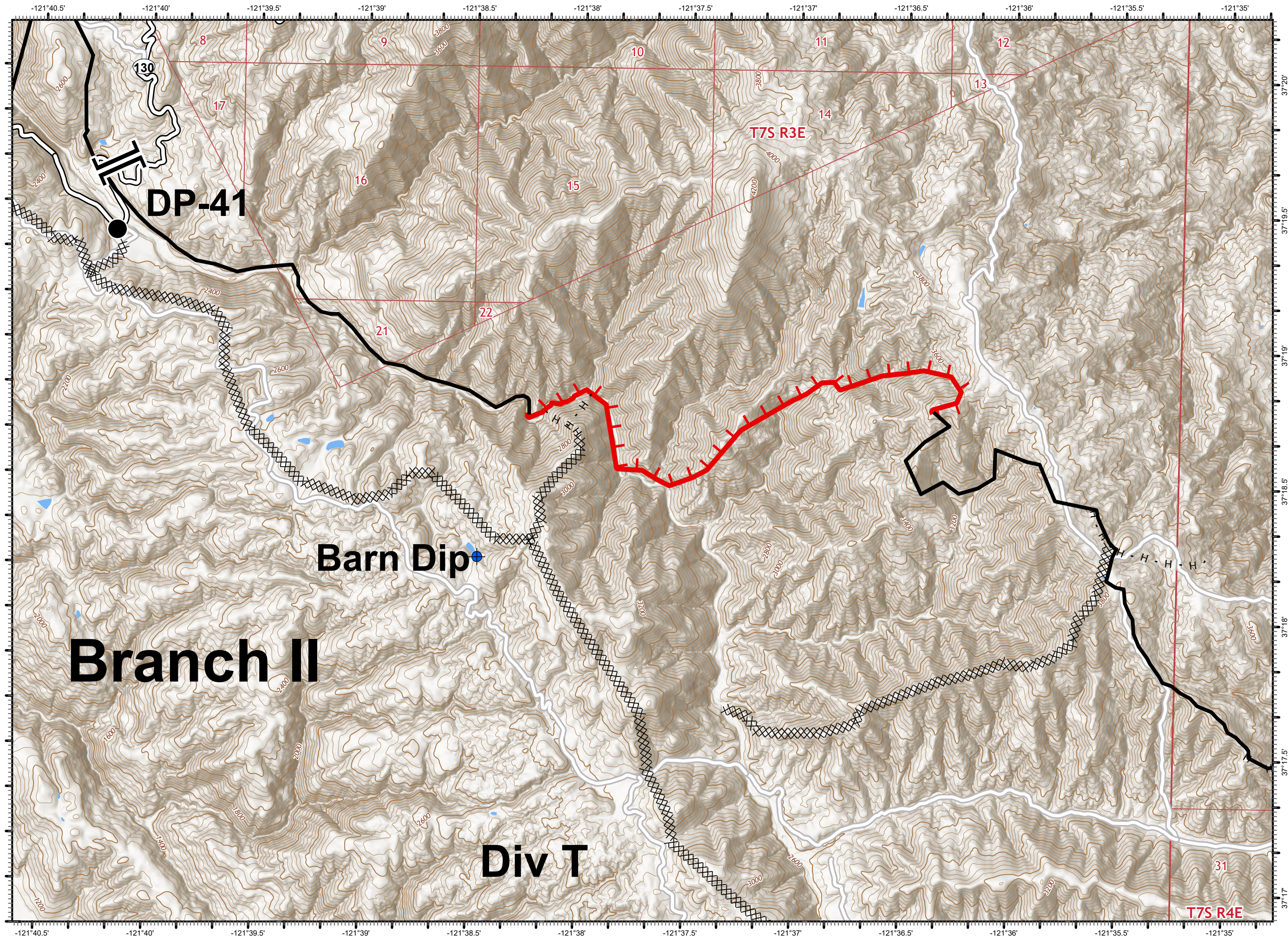


**DISCLAIMER:**  
The displayed incident data is approximate and should only be used for informational purposes. The information contained in supporting base layers was generated from GIS data maintained by different sources and agencies and is not necessarily accurate to mapping, surveying, or engineering standards.

1:24,000



9/8/2020  
2103 Hours






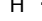
# IAP Map

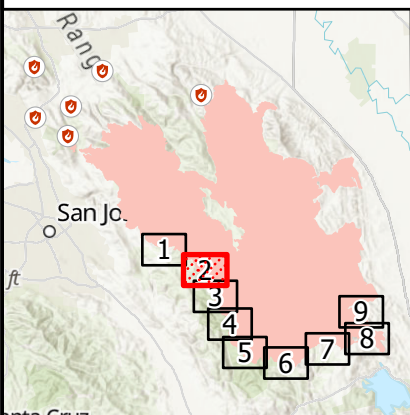
SCU Lightning Complex  
BRANCH II

CA SCU 005740

9/9/2020

Page: 2

-  Dip Site
-  Contained Line
-  Completed Dozer Line
-  Completed Hand Line

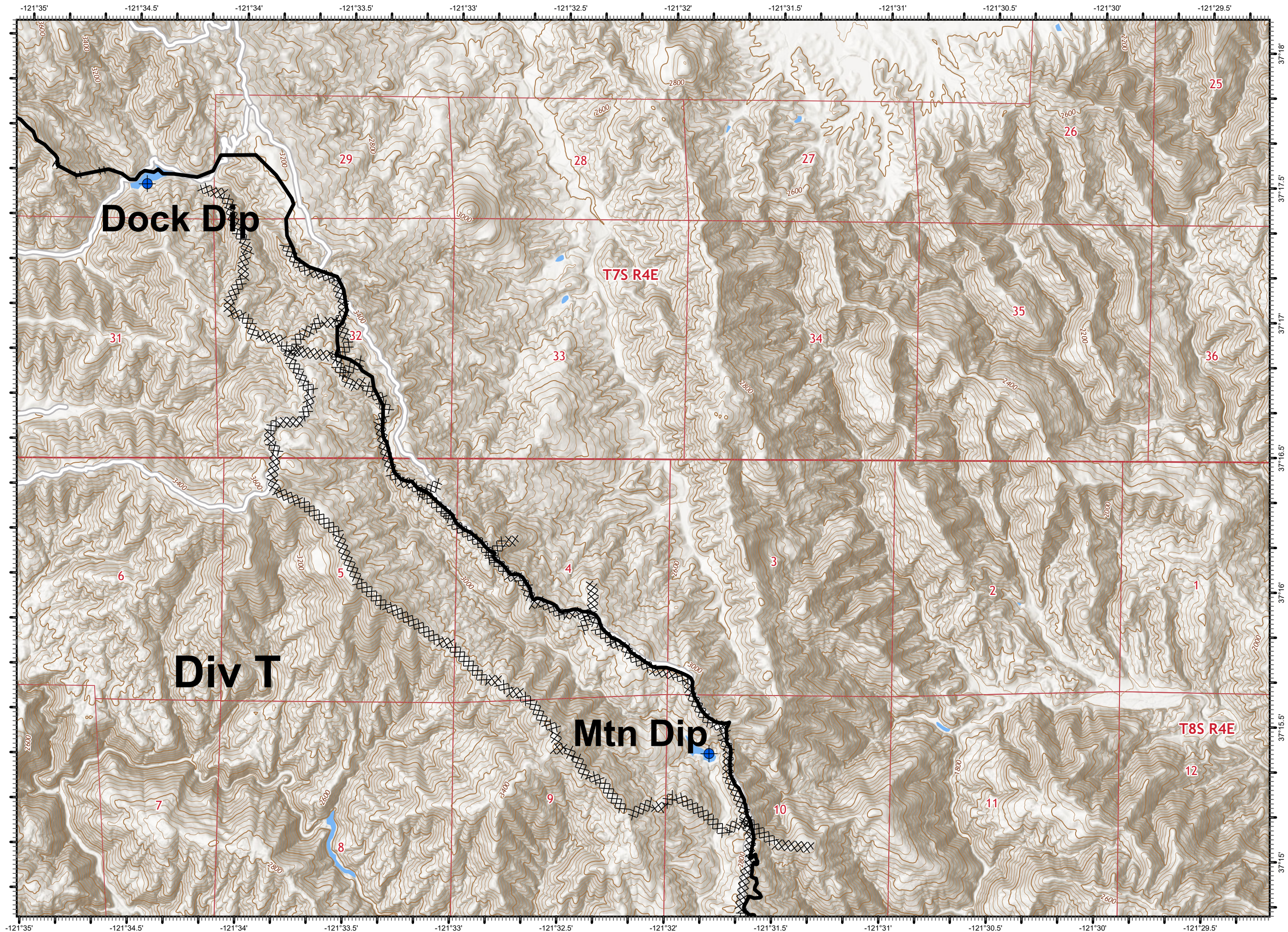


**DISCLAIMER:**  
The displayed incident data is approximate and should only be used for informational purposes. The information contained in supporting base layers was generated from GIS data maintained by different sources and agencies and is not necessarily accurate to mapping, surveying, or engineering standards.

1:24,000



9/8/2020  
2103 Hours






# IAP Map

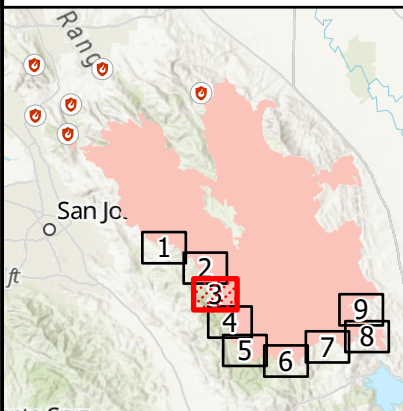
SCU Lightning Complex  
BRANCH II

CA SCU 005740

9/9/2020

Page: 3

-  Dip Site
-  Contained Line
-  Completed Dozer Line

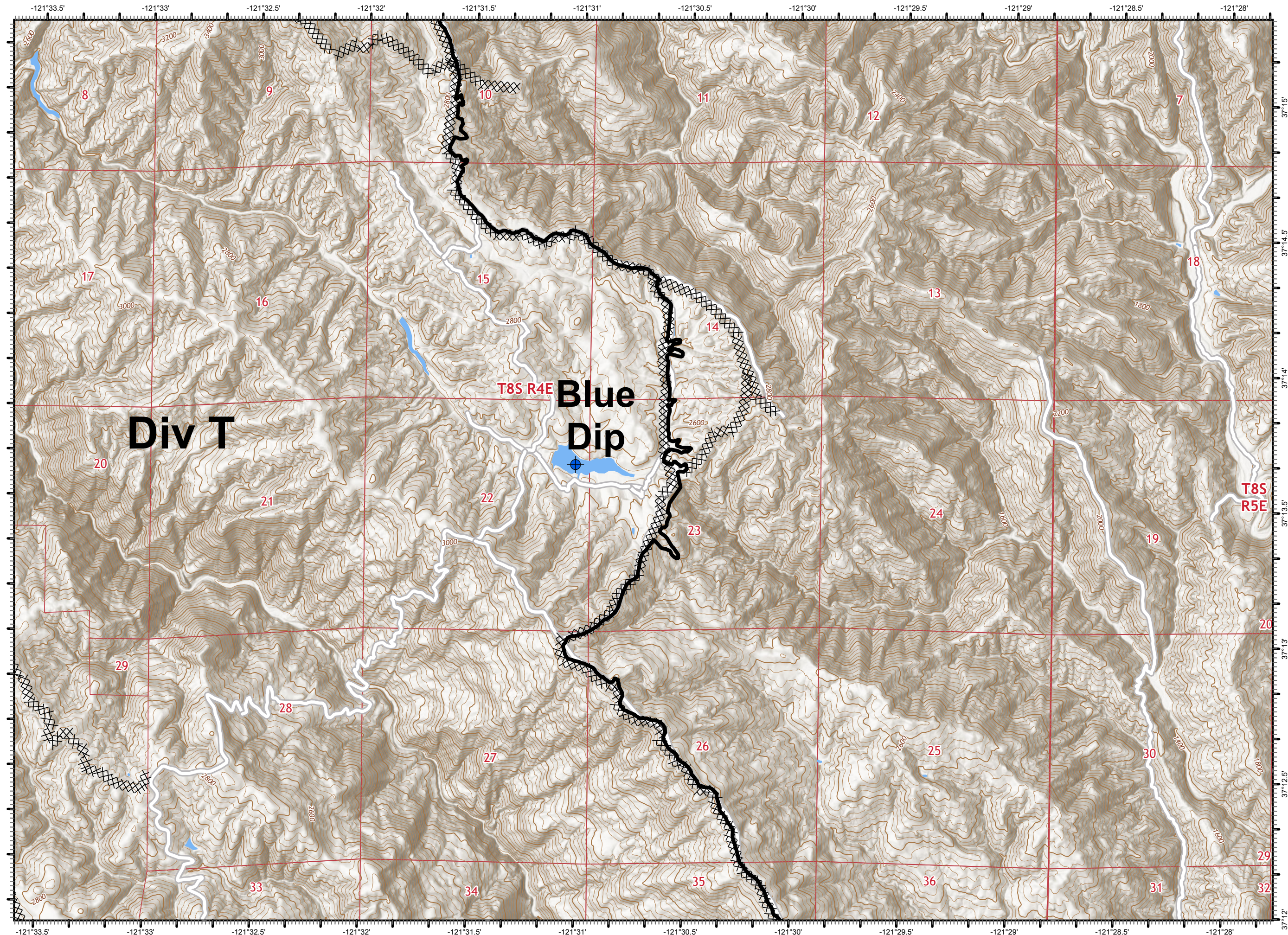


**DISCLAIMER:**  
The displayed incident data is approximate and should only be used for informational purposes. The information contained in supporting base layers was generated from GIS data maintained by different sources and agencies and is not necessarily accurate to mapping, surveying, or engineering standards.

1:24,000



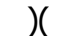

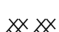
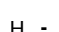
9/8/2020  
2104 Hours

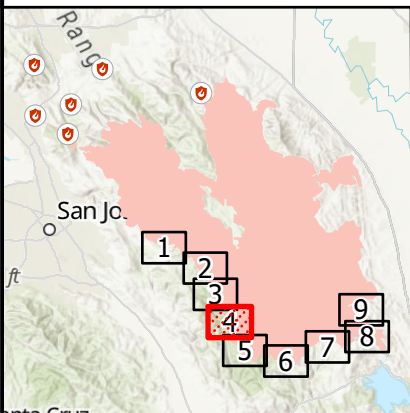


# IAP Map

SCU Lightning Complex  
BRANCH II  
CA SCU 005740  
9/9/2020

Page: 4

-  Division Break
-  Contained Line
-  Completed Dozer Line
-  Completed Hand Line

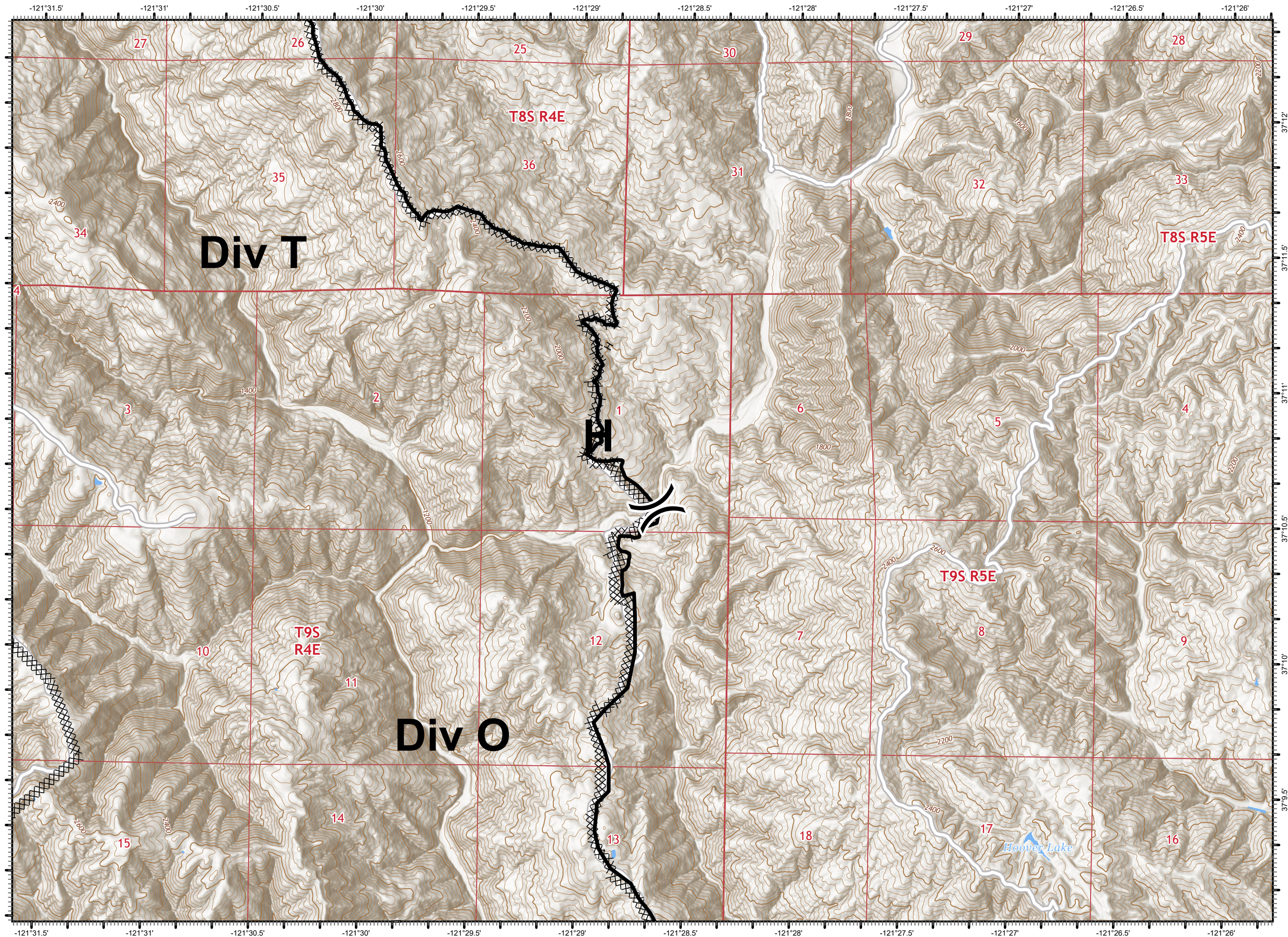


DISCLAIMER:  
The displayed incident data is approximate and should only be used for informational purposes. The information contained in supporting base layers was generated from GIS data maintained by different sources and agencies and is not necessarily accurate to mapping, surveying, or engineering standards.

1:24,000





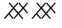
9/8/2020  
2104 Hours

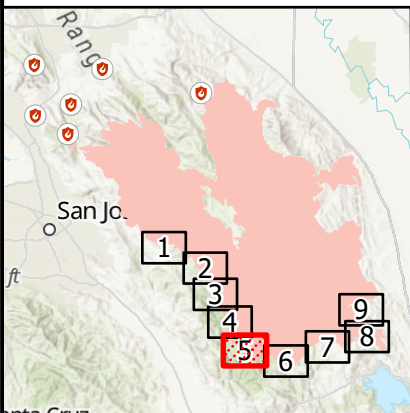


# IAP Map

SCU Lightning Complex  
BRANCH II  
CA SCU 005740  
9/9/2020

Page: 5

-  Division Break
-  Contained Line
-  Completed Dozer Line

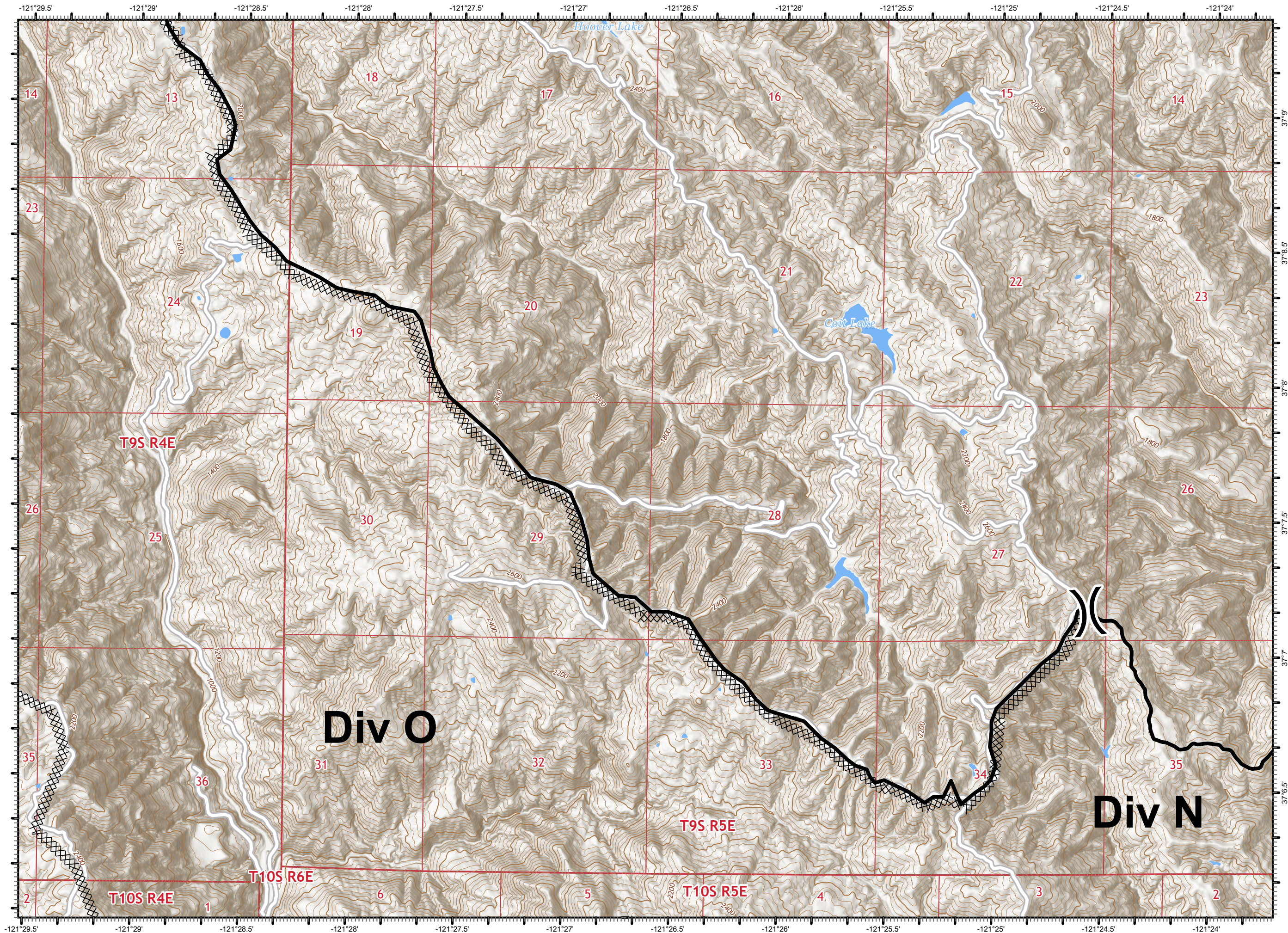


**DISCLAIMER:**  
The displayed incident data is approximate and should only be used for informational purposes. The information contained in supporting base layers was generated from GIS data maintained by different sources and agencies and is not necessarily accurate to mapping, surveying, or engineering standards.

1:24,000



9/8/2020  
2104 Hours



# IAP Map

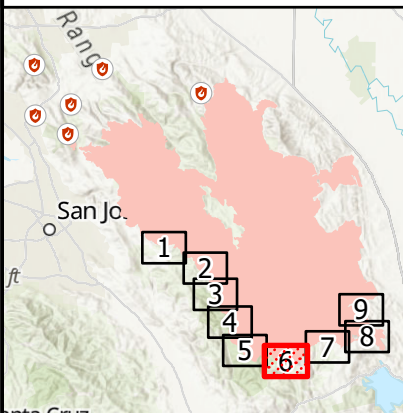
SCU Lightning Complex  
BRANCH II

CA SCU 005740

9/9/2020

Page: 6

- Drop Point
- ) Division Break
- Contained Line
- XX XX Completed Dozer Line

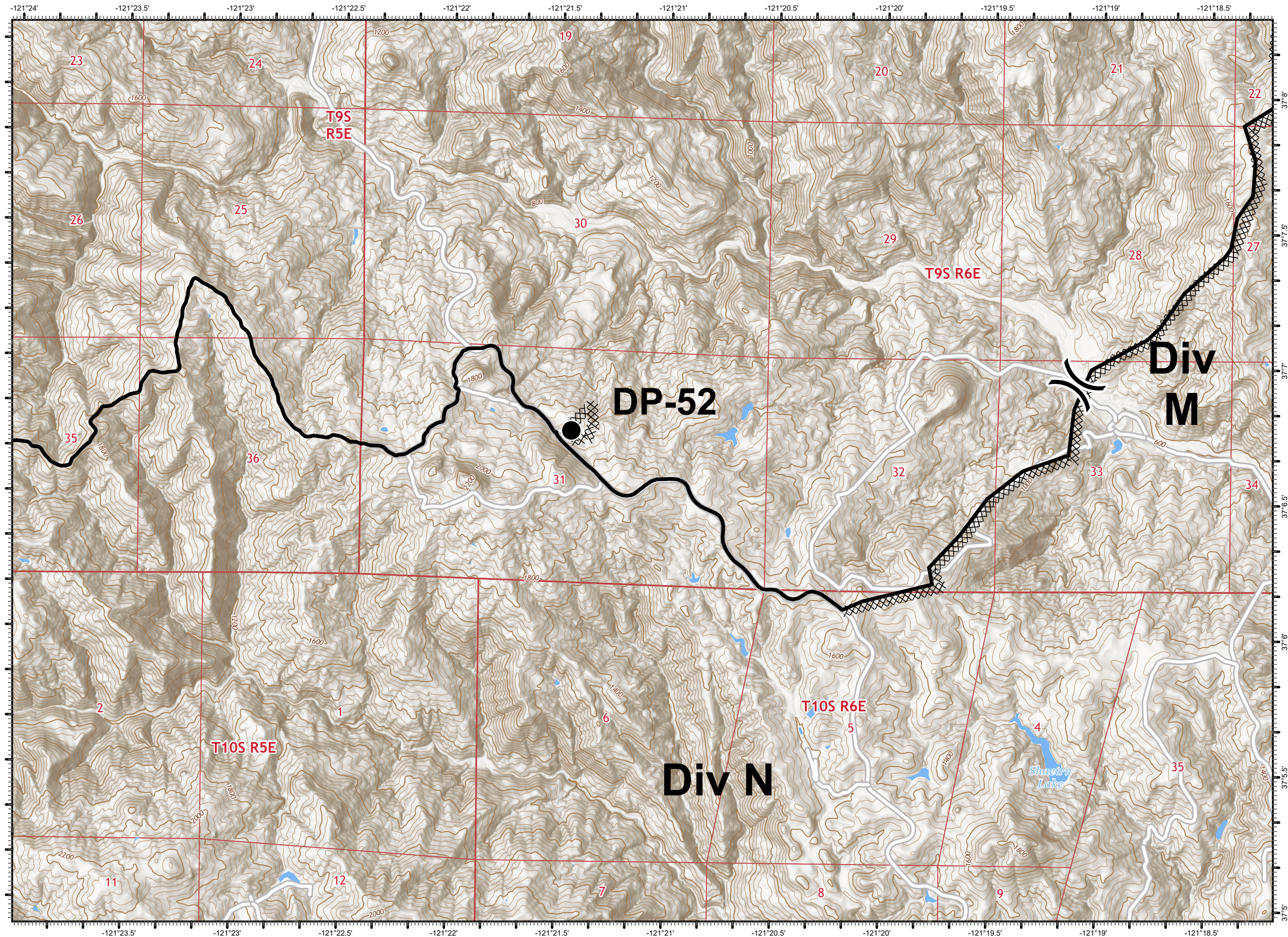


DISCLAIMER:  
The displayed incident data is approximate and should only be used for informational purposes. The information contained in supporting base layers was generated from GIS data maintained by different sources and agencies and is not necessarily accurate to mapping, surveying, or engineering standards.

1:24,000



9/8/2020  
2105 Hours

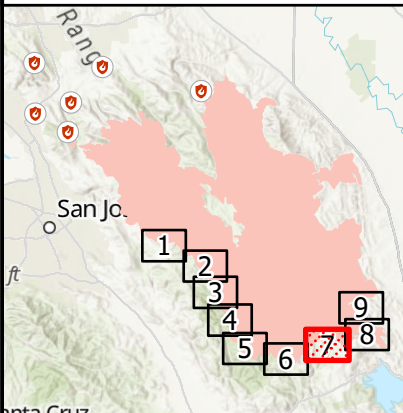


# IAP Map

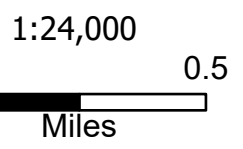
SCU Lightning Complex  
BRANCH II  
CA SCU 005740  
9/9/2020

Page: 7

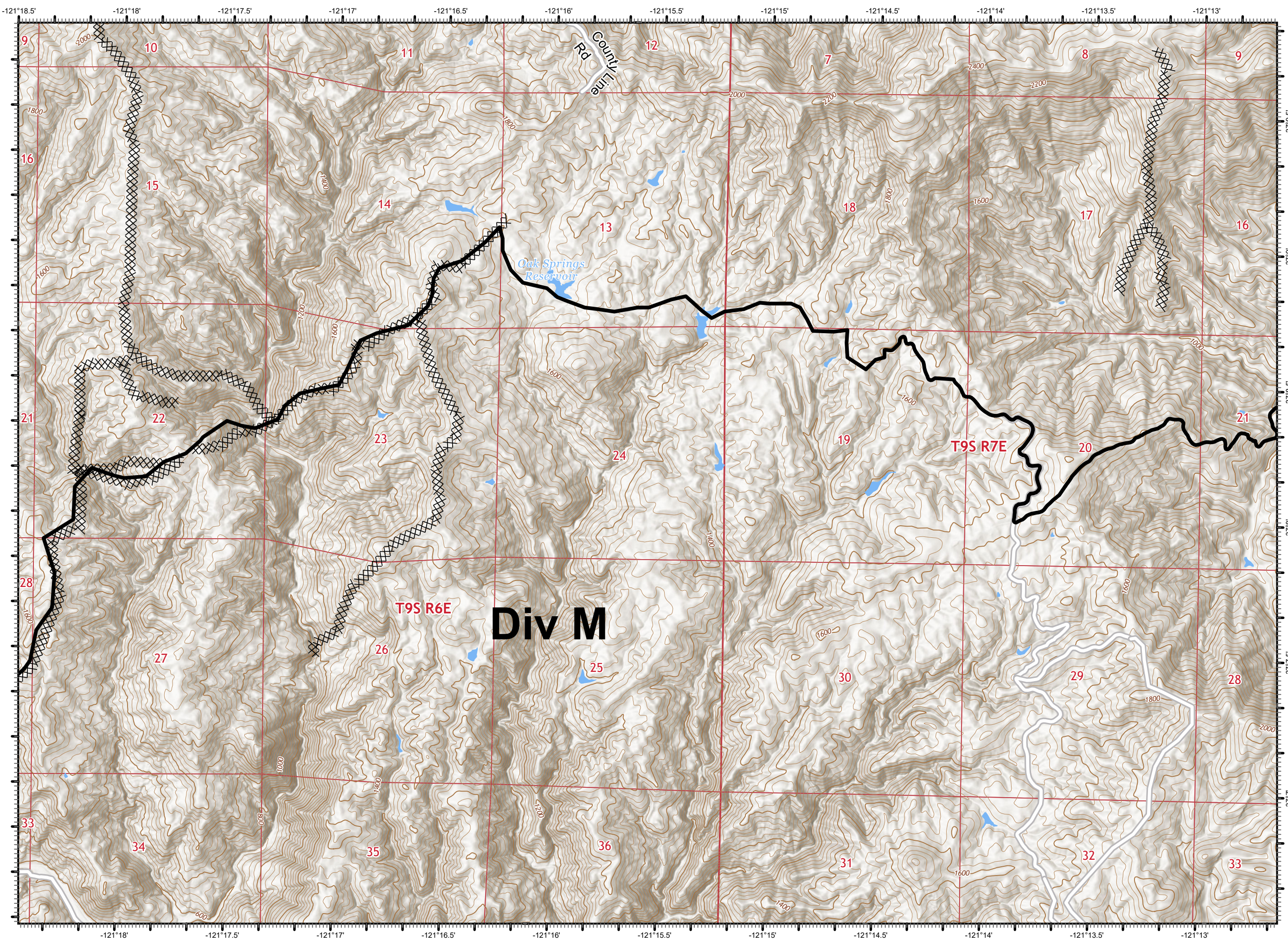
- Contained Line
- XX XX Completed Dozer Line



DISCLAIMER:  
The displayed incident data is approximate and should only be used for informational purposes. The information contained in supporting base layers was generated from GIS data maintained by different sources and agencies and is not necessarily accurate to mapping, surveying, or engineering standards.



9/8/2020  
2105 Hours







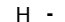
# IAP Map

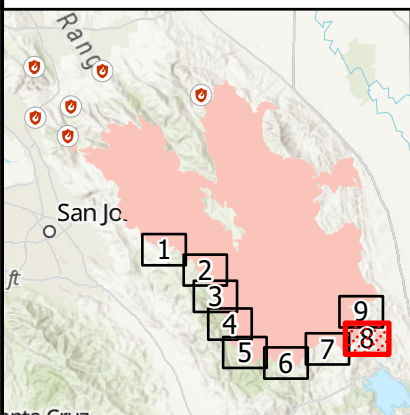
SCU Lightning Complex  
BRANCH II

CA SCU 005740

9/9/2020

Page: 8

-  Contained Line
-  Completed Dozer Line
-  Completed Hand Line

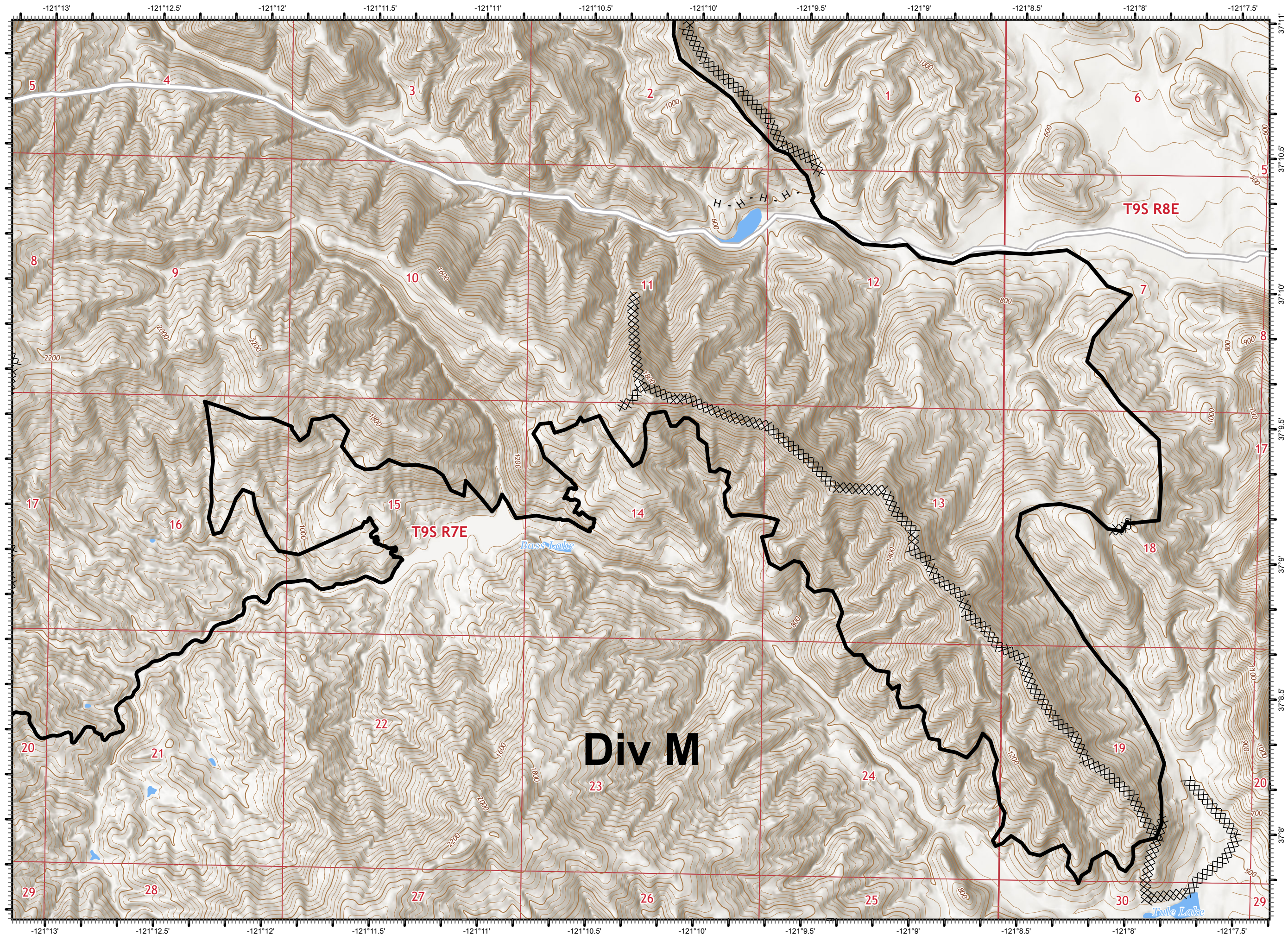


**DISCLAIMER:**  
The displayed incident data is approximate and should only be used for informational purposes. The information contained in supporting base layers was generated from GIS data maintained by different sources and agencies and is not necessarily accurate to mapping, surveying, or engineering standards.

1:24,000



9/8/2020  
2105 Hours



# IAP Map

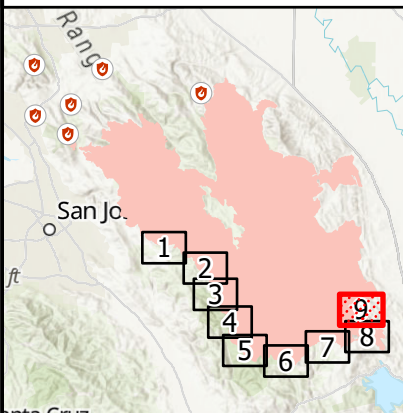
SCU Lightning Complex  
BRANCH II

CA SCU 005740

9/9/2020

Page: 9

- || Branch Break
- Contained Line
- ⊗⊗ Completed Dozer Line
- H · Completed Hand Line



DISCLAIMER:  
The displayed incident data is approximate and should only be used for informational purposes. The information contained in supporting base layers was generated from GIS data maintained by different sources and agencies and is not necessarily accurate to mapping, surveying, or engineering standards.

1:24,000



9/8/2020  
2105 Hours

