

* * CORRECTED * *

INCIDENT ACTION PLAN SCU LIGHTNING COMPLEX

CA-SCU-005740

Friday




OPERATIONAL PERIOD

8/28/2020 0700
to
8/29/2020 0700



ORGANIZATION ASSIGNMENT LIST (ICS 203)

1. Incident Name: SCU LIGHTNING COMPLEX		2. Operational Period: Date From: 8/28/2020 Time From: 0700		Date To: 8/29/2020 Time To: 0700	
3. Incident Commander(s) and Command Staff:			7. Operation Section:		
IC/UC's	J.Veik / A. Mitchell (T)	Operations	S. Corn		
Deputy	M. Blankenheim / D. Martin (T)	Deputy Operations	T. Ernst / S.Lane (T)		
Safety Officer	J. Buchmeier / J. Novak (T)	Night Ops	J. McGough		
Information Officer	R. Brocchini / R. Lubben (T)	Staging Area			
Liaison Officer	M. Villalpando / J. Kiszka (T)	Branch	I	M. Martinez	
4. Agency/Organization Representatives:		Division/Group	I	D. Prevett / G. Laird (T)	
Alameda County SO	Paul Liskey	Division/Group	J / K / L		
PG&E	Pam Perdue	Division/Group	Q	B. Wilson (T)	
Contra Costa County SO	Rich Kovar	Division/Group	R	B. Todeschini / J. Renner (T)	
Santa Clara County OEM	Dana Reed	Division/Group	V		
State Parks	Wes Gray	Division/Group			
San Joaquin County OES	Shellie Lima	Staging Area	ICP		
Stanislaus County SO	Richard Murdock	Branch	II	R. McLaughlin / R. Hennault	
Stanislaus County OES	Aaron Wilson	Division/Group	M	M. Boyce	
Stanislaus County Fire	Eric Klevmyr	Division/Group	N	K. Stewart (T) M. Boyce	
CCC	Shawn Fry	Division/Group	O	K. Mapes / R. Hennault / K. Stewart (T)	
Santa Clara County SO	Thea Lera	Division/Group	T	R. Sonsteng	
TID	Jason Hicks	Division/Group			
San Francisco Water	Rick Duffey	Staging Area	Gilroy		
CALOES	Jim Linn	Branch	Suppression Repair	S. Ward (12) / E. Orre (12)	
East Bay Regional Park	Brian Cordeiro	Division/Group	1	S. Forman (12) (T)	
Alameda County FD	Eric Moore	Division/Group	2	A. Anastasi (12) S. Ward (12) / E. Luparello (T)	
Livermore-Pleasanton	Jeff Peters (FIRE)	Division/Group			
San Benito County	E. Taylor (Sheriff) K. Mangano (EOC)	Division/Group			
Merced Co Sheriff	Ray Frastad	Division/Group			
CAL OES Fire	John Salvate	Division/Group			
5. Planning Section:		Division/Group			
Chief	G. Garcia	Division/Group			
Deputy	S. Sherwood (T)	Division/Group			
Resource Unit	J. Anderson / D. Scheurich / J. Heald (T)	Division/Group			
Situation Unit	N. Wallingford / R. Broomfield (T)	Division/Group			
Documentation Unit	M. Schaeffer	Division/Group			
Demobilization Unit	J. Worden / M. Schaeffer	Division/Group			
GISS	T. Knecht	Division/Group			
FBAN	S. Volmer	Air Operations Branch		Director:	B. Kremensky
IMET	R. Walbrun	Air Support Group Supervisor		P. Mateer	
Training Tech Spec	S. Vargas / I. Crosslay (T)	Air Tactical Group Supervisor			
6. Logistics Section			Helibase Manager R. Johnson / L. Kalfsbeek (T)		
Chief	S. Dohman / A. Long				
Deputy Chief	J. Warden	8. Finance/Administration Section:			
Supply Unit	P. Lee	Chief	G. Belk		
Facilities Unit	B. Luis / D. Zumkeller (T)	Deputy Chief	R. Browne / J. Tapia (T)		
Ground Support Unit	J. Luckenbach / D. Zumkeller (T)	Time Unit	J. Navarro		
Communications Unit	J. Brooks / B. Rapp (T)	Procurement Unit	J. Andrade		
Medical Unit	J. Segura / R. Beeson (T)	Comp/Claims Unit	B. Stirton / E. Sanchez		
Motel Unit	B. Brewer	Cost Unit	J. Tapia / G. Bull (T)		
Prepared By: Name:	S. Sherwood	Position/Title:	PSC1	Signature:	
ICS 203		Date/Time:	8/27/2020 2300 hours		NIMS IAP



SCU Lightning Complex Fire Weather Forecast



FORECAST NO: 10

NAME OF FIRE: SCU Lightning Complex

PREDICTION FOR: 0700 Fri-0700 Sat

UNIT: CALFIRE Santa Clara

SHIFT DATE: Aug 28th-Aug 29th

SIGNED:

Incident Meteorologist-Ryan Walbrun

TIME AND DATE

FORECAST ISSUED: 2000 Aug 27th

WEATHER DISCUSSION: No significant weather changes today with the marine layer around 2000 feet this morning. This will bring good humidity recovery and cool temperatures to the lower slopes to start the day. As the marine layer mixes out the moisture will rise and bring some mid-morning through midday humidity rises for locations above 2000 feet. Warm and dry weather will persist along the eastern Divisions out near I-5. Div Q/R will continue to have more exposure to onshore winds near the Bay keeping fire weather conditions relatively mild. **For the planned burn operations in Div T/O in Branch II** the conditions continue to look favorable. Warm and dry above the 2000 foot level with humidity lowering to 22-32% through the day. Prevailing winds will be from the West to Southwest pushing smoke and fire eastward towards the main fire area. The warm ridge will keep the marine layer compressed to 2000 feet or less with continued warm and dry conditions overnight into Saturday morning. **Continue to expect night time lowering of the humidity from around 2am-6am, especially above 2000 feet which can lead to rapid increases in fire behavior during the pre-dawn hours from fuels burning out or burning operations.**

WEATHER FORECAST FOR FRIDAY:

WEATHER: Morning clouds below 2000 feet otherwise smoke and hazy sunshine.

TEMPERATURES: Highs 79-85 below 2000 feet and 86-92 above 2000 feet, warmest Branch I.

HUMIDITY: 25-35% wettest below 2000 feet and 15-25% above 2000 feet, driest in Branch I.

20 FT WINDS:

Ridgetop: West to Southwest 5-10 mph afternoon gusts 15 mph strongest Div Q and R.
Slopes : Upslope/Upcanyon 3-8 mph late afternoon gusts 12 mph Branch I drainages.
Hwy 152: Expect strong and gusty west winds **in Div M** around **Pacheco Pass** and San Luis Reservoir. **Afternoon and evening westerly gusts 30 mph.**

STABILITY/INVERSION: Moderate to strong morning inversion breaking by midday.

WEATHER FORECAST FOR FRIDAY NIGHT:

WEATHER: Smoke and haze otherwise mostly clear skies over the fire with clouds on the lower slopes.

TEMPERATURES: Lows 59-66 lower slopes and 67-76 above 2000 feet.

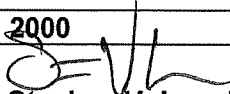
HUMIDITY RECOVERY: 55-65% but lowering to 20-30% above 2000 feet locally 15% after midnight.

20 FT WINDS: Ridgetop: Southwest winds 4-8 mph evening gusts 12 mph, easing overnight.
Slopes : Downcanyon 1-4 mph.

STABILITY/INVERSION: Stable inversion layer setting up overnight.

Extended Forecast: No big changes through Saturday with similar weather forecast. High pressure starts to build Sunday that will be the start of a significant warming and drying trend. Highs back into the 90s with warm overnight lows. Poor humidity recovery, even lower slopes. The marine layer may get wiped out meaning the lower slopes will become available for burning. Some light north to northeast winds develop.

FIRE BEHAVIOR FORECAST

FORECAST NUMBER: 11	TYPE OF FIRE: WILDFIRE
FIRE NAME: SCU LIGHTNING COMPLEX CASCU-005740	OPERATIONAL PERIOD: 8/28-8/29/20 0700-0700
DATE ISSUED: 8/27/20	TIME ISSUED: 2000
UNIT: SANTA CLARA	SIGNED:  Typed/printed: Stephen Volmer FBAN

INPUTS

WEATHER SUMMARY:

Seasonable weather will enter the area, and will last into next week. Daytime marine layer at will begin lifting by noon. Expect mid 80's on the lower western slopes, and high 80's on the interior and eastern slopes. Nighttime humidity will drop to the high teens overnight in the areas above 2,000' elevation. Winds on the eastside will be terrain driven, while the Morgan Hill and Altamont areas will experience gusty westerly winds. **30mph west winds along Hwy152 and DIV M will be possible in the afternoon and evening.**

OUTPUTS

FIRE BEHAVIOR

FUEL MODEL	RATE OF SPREAD FT/MIN	FLAME LENGTH FT	SPOTTING DISTANCE	PROBABILITY OF IGNITION
GRASS	55-97	7	.30 mi	89%
BRUSH	53-89	19	.50 mi	89%
OAK OVERSTORY	13-23	11	.40 mi	89%

GENERAL:

Fuels are currently at seasonal averages, but will climb slowly with the increase in heat and winds. Thick decadent brush fields have a large amount of dead material in them and lack any significant fire history. Fuels above 2,000' elevation will burn extremely well all night due to the humidity dropping and temperatures lowing minimally. When fuels, wind, and topography are all in alignment you can expect dangerous rates of spread. Expect Moisture of Extinction to hamper nighttime firing operations below 2,000'elv beginning around 2am.

*****Values above are valid for any new starts in the area*****

SPECIFIC:

- Utilize fine fuels to get depth and carry fire into the brush during firing operations.
- Take the weather often throughout the shift to track the changing trends and conditions.
- Dirty burns in the brush will have a high reburn potential when heat builds below in the steep drainages due to rollout.

AIR OPERATIONS: Visibility will clear up by noon when the inversion lifts. Expect gusty conditions over the ridgetops in the afternoon. Transport winds W 10mph. Smoke will travel into the San Antonio valley and out to the northeastern divisions. Have a plan in place for air resources before they arrive to maximize their efforts, and time.

Sunset 19:39 Sunrise 06:34

SAFETY

- Stump holes with deep seated heat are still prevalent across the incident. Watch where you walk.
- Large fire weakened trees continue to release throughout the incident.
- Weather getting hotter and dryer. Watch for poor overnight humidity recovery, and track the trends.

SAFETY MESSAGE/PLAN (ICS 208)

1. Incident Name: SCU LIGHTNING COMPLEX	2. Operational Period:	Date From: 8/28/20	Date To: 8/29/20
		Time From: 0700	Time To: 0700

EVERYONE gets a briefing.
Briefing starts at 0700.....**DON'T BE LATE!!**

Hygiene: Wash hands often with warm water and soap for a minimum of twenty seconds. Keep hand sanitizer nearby. Disinfect vehicle and any PPE used appropriately. Minimize hand to face exposure. Wash your hands before eating.

Communicate your plan: know the plan, everyone needs to be fluid with the plan so we can accomplish the plan. Your hard work does not go unnoticed.

Fire Behavior: Fuels are receptive to fire spread. A small amount of wind on this dry fuel changes fire behavior dramatically!! Be alert to changes in wind directions. Watch for spot fires outside the control lines and ember cast.

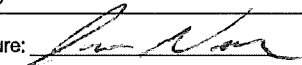
TAILGATE SAFETY

- Accountability: Everyone checks in and everyone checks out. Supervisors know where crews are at all times.
- Work Cycle: Maintain proper work rest ratio.
- Hydration and Nutrition: Monitor each other for proper hydration and nutrition.
- Briefing: Leaders intent is fully communicated, and safety briefing is provided.
- Safety gear: Everyone has the appropriate PPE and is using.

5. Prepared By: J. Buchmeier / J. Novak (T) Position/Title: SOF1
ICS 208 Date/Time: 8/27/2020 / 2000

Signature: 

INCIDENT ACTION PLAN SAFETY ANALYSIS (ICS 215A)

1. Incident Name: SCU LIGHTNING COMPLEX	2. Operational Period:	Date From: 8/28/20 Time From: 0700	Date To: 8/29/20 Time To: 0700
Incident Area	Hazard/Risks	Mitigations	
ALL	COMPLACENCY	Don't underestimate the task at hand. Wear full PPE while on the line. Don't get caught off guard. Have the right radio clone.	
ALL	COVID 19	Adhere to local, state, federal, and CDC health guidelines. Maintain social distancing when applicable. Wear a mask for yourself and others. Report any symptoms immediately to a supervisor.	
ALL	FIRE BEHAVIOR	Know your LCES and maintain Situational Awareness. Use experienced Look Outs. Follow the downhill line construction guidelines. Monitor weather for changes in the wind, temp, and RH during the shift. Have a contingency plan with established decision points and Safety Zones.	
ALL	FATIGUE/HEAT/DEHYDRATION	Be alert for signs of fatigue and take breaks as necessary on hot dry days. Monitor incoming resources for level of fatigue. Drink water before, during, and after shifts, up to 1.5 gal. per shift. Be alert for signs of heat stress in yourself and others; use the buddy system. Eat small meals often and when possible. Find shade when you can. Drink electrolyte drinks at a 2:1 water/sport drink ratio.	
ALL	STEEP TERRAIN/ROLLING DEBRIS	Watch your footing while hiking in steep terrain. Be careful of loose rolling debris. Maintain Situational Awareness.	
ALL	LINE CONSTRUCTION	Conduct thorough briefing for all personnel (inside rear IRPG). Ensure LCES in place prior to engagement. Establish adequate Safety Zones. Use Downhill Line Checklist. Follow "Look Up, Look Down, Look All Around" procedures. Utilize Risk Management Process...reference the IRPG.	
ALL	HAZARD TREES	Identify and isolate the area to provide for the safety of others. Flag and make proper notifications. Do not fall trees out of your certification level.	
ALL	DRIVING HAZARDS	SLOW DOWN! Long travel times to the line, stay alert. Drive defensively! Expect the unexpected around every curve. Drive with headlights and seatbelts on. Narrow roads with limited passing room. Coordinate your movements on one-lane roads, follow traffic plans.	
ALL	AIRCRAFT OPERATIONS	Monitor air-to-ground frequency, they are your eyes in the sky. Use air-to-ground frequency to communicate with aircraft. Use clear, concise statements when directing aircraft. Only utilize aircraft to insert personnel on the line when necessary. Ensure the line is clear when working with aircraft.	
ALL	PERFORM TAIL GATE SAFETY	Everyone should be briefed on the conditions and circumstances regarding the fire and their assignments per the IRPG.	
ALL	DOZER SAFETY	Watch for rolling material. Monitor safe working distances. Avoid working below dozer. Utilize communication with the operator (radio or hand signals).	
5. Prepared By: Joe Buchmeier		Position/Title: SOF1	
ICS 215A		Date/Time: 8/27/2020 / 2030	
		Signature: 	



COVID-19 SAFETY BULLETIN



CAL FIRE Incident Management Team 6 Expectations

Do YOUR Part, Prevent Spread!

Remind & Correct: Any Public Area,
MASK UP!

When off the line,
MASK UP!

When moving around the incident,
MASK UP!

When wiping down apparatus/vehicles,
MASK UP!

When in Public Spaces,
MASK UP!

While washing your hands frequently!
MASK UP!

When meetings outside & in PUBLIC,
MASK UP!

When at the chow line and mess hall,
MASK UP!

WHAT IS OUR MESSAGE?

MASK UP, PLEASE!



CAL FIRE / INCIDENT MANAGEMENT TEAM 6

COVID-19 DAILY HEALTH CHECK SCREENING ALGORITHM



EACH WORKDAY WILL BEGIN WITH THE FOLLOWING:

Temperature recorded
Employee Screening Questionnaire

TEMPERATURE RECORDED

- Fever YES/NO? *Fever is considered > 100.4*
- EMPLOYEE SCREENING QUESTIONNAIRE
- Are you feeling ill/feverish?
- Are you having chills?
- Do you have new or worsening SOB?
- Do you have a new or worsening cough?
- Do you have a new or prolonged sore throat?

No Fever and No answered to all Employee Screening Questionnaire

Continue with Daily Operations

Yes Fever OR Yes answered to any of the Employee Screening Questionnaire

- Wash Hands, Don Mask and Isolate from other employees. Maintain a distance of > 6 feet.
- Notify the Company Officer and/or Strike Team Leader.
- Notify Medical Unit Leader
- Refer employee to appropriate healthcare provider for evaluation and treatment.
- Disinfect "High-touch" surface areas.

REMINDERS TO ALL EMPLOYEES

- ◇ Self-Monitor yourself while you are on and off the line. If you experience any flu-like symptoms, COVID-19 symptoms, or any Respiratory illness symptoms contact your Company Officer and or Strike Team Leader.
- ◇ Maintain proper hand hygiene. Wash hands with soap and water for 20 seconds. Utilize hand sanitizer often. Do not shake hands, touch, or hug others.
- ◇ Cover coughs or sneezes (if not masked). Cloth Masks should be exchanged and or washed daily.
- ◇ Masks are required when out in the public on non-emergency business.
- ◇ Disinfect high-touch surfaces daily.
- ◇ Practice social distancing (> 6 feet) at meal times, dormitories, in-person meeting, or while in public.



CAL FIRE / Incident Management Team 6

COVID-19 Response Algorithm



Employee Response Action Plan

COVID-19 Positive Test or COVID-19 Positive Clinical Symptoms Presentation

- ***COVID 19 Symptoms: Cough, SOB, Fever or afebrile, Chills, Muscle Pain, Sore throat, Loss of taste/smell***
- Employee informs Company Officer and Strike Team Leader of presumed/confirmed COVID-19 symptoms.
- Employee advised to seek evaluation by Medical Unit and CAL MAT or base camp medical unit.
- Crew initiates cleaning measures. Mask, safety glasses, gloves worn. (If needed, LOGS will assist)
- Medical Unit to notified IC, Liaison, Safety and Logistics ASAP. Medical Unit will notify COVID-19 Public Health Officer and determine need for testing and locations.



Incident Action Plan

- Company Officer / Strike Team Leader notified of personnel with COVID-19 positive test or symptom.
- Medical Unit evaluates Individual(s) and need for care and evaluation.
- IC, Liaison, Safety and Logistics notification made to determine course of incident evaluation and response.
- Line Chief, Agency Administrator, and Region Office updated upon notification



Facilities Response

- Medical and Safety notified
- Incident Notification
- Disinfection plan initiated.
- Resource Status Evaluated



Medical Evaluation & Contact Tracing

- Personnel interviewed by Medical Unit . List of Positive contacts made in the last 5 days acquired. All Exposed are required to wear surgical mask, self monitor for Fever/Resp symptoms for up to 14 days (exposed personnel are subject to COVID-19 testing)
- Home Unit / Department utilized and retrospective tracking of Positive COVID-19 personnel inter-actions are identified within the last 5 days.
- Home Unit / Department updated by Company Officer / Strike Team Leader.
- Public Health Department is contacted and updated by IC or Designated Representative.
- Positive COVID-19 Employees w/symptoms will need to be evaluated by Health Department conducting testing, prior to returning to assignment.
- Positive COVID-19 Employees w/o symptoms may be required to be evaluated and resource status will be reviewed prior to returning to assignment.

ASSIGNMENT LIST (ICS 204 WF)

CONTROLLED UNCLASSIFIED
INFORMATION//BASIC

1. Incident Name: SCU LIGHTNING COMPLEX	2. Operational Period: Date From: 08/28/20 Date To: 08/29/20 Time From: 0700 Time To: 0700	3. Branch Division I Q
--	---	---

4. Operations Personnel: Page 1 of 2 Quebec

Operations Section Chief: S. Corn	Night Ops: J. McGough
Branch Director: M. Martinez	Branch Safety:
Division/Group Supervisor: B. Wilson (T)	Air Attack:

5. Resources Assigned: **** Resources Below in Bold are 12 Hour ****

Resource Identifier	ALS	LWD	Leader	Personnel	Request #	Hours	Reporting Location
STC BTU 9210C			M. Kennefic	17	E-364	0700-0700	ICP
STC OESH TX-2			S. Campbell	22	E-452	0700-0700	ICP
STC XBO 6220C → T			M. Gerken	20	E-476	0700-0700	ICP
T/F SKU 1			M. Whipple	23	E-402	0700-0700	ICP
STH SCU 9163H			M. Lane	17	C-85	0700-0700	ICP
STG HUU 9126G			J. Mahoney	34	C-28	0700-0700	ICP
STG SLU 9344G			A. Spadaro	34	C-80	0700-0700	ICP
CRW T-2 C-17			C. Hubbard	20	C-17	0700-1900	ICP
STL HUU 9128L			T. Meyers	9	E-365	0700-0700	ICP
DOZ BTU 2142			T. Adams	2	E-57	0700-0700	ICP
DOZ SKU 2643			L. Tupman	1	E-55	0700-0700	ICP
DOZ NEU 2346			D. Miner	3	E-4	0700-0700	ICP
W/T PVT E-7			D. Escobar	2	E-7	0700-0700	ICP
W/T PVT E-228			T. Kelly	2	E-228	0700-0700	ICP
W/T PVT E-230			D. Hughes	2	E-230	0700-0700	ICP
FALM O-370			B. Toth	1	O-370	0700-1900	ICP
FALM O-371			T. Davant	1	O-371	0700-1900	ICP
FEMP MASSEY	X		B. Massey	1	O-187	0700-0700	ICP

6. Work Assignments:
Construct and/ or improve Fire line.
Assess need for contingency lines.
Mop up 300' in from control line.

7. Special Instructions:

8. Communications

Name	Ch	Function	Rx Freq	Rx Tone	Tx Freq	Tx Tone	Notes
NIFC C11	4	COMMAND	170.6875N	131.8 (T3)	166.5750N	131.8 (T3)	MT ALLISON LINKED W/CMD 3, 10, 38 & 40
CDF T29	7	TACTICAL	151.3475N	192.8 (T16)	151.3475N	192.8 (T16)	
CDF T15	13	ROTARY A/G	159.2700N	192.8 (T16)	159.2700N	192.8 (T16)	ROTARY AIRCRAFT AIR TO GROUND
CDF T20	14	FIXED WING A/G	159.3750N	192.8 (T16)	159.3750N	192.8 (T16)	FIXED WING AIRCRAFT AIR TO GROUND
CALCORD	15	MEDICAL	156.0750N	156.7 (T6)	156.0750N	156.7 (T6)	
GUARD 27	16	EMERGENCY	168.6250N		168.6250N	110.9 (T1)	AIR GUARD


9. Prepared by: Name: Jamie Heald RESL

Signature:

ICS 204 Date/Time: 8/27/2020 2200 Personnel Count: 211

ASSIGNMENT LIST (ICS 204 WF)

CONTROLLED UNCLASSIFIED
INFORMATION//BASIC

1. Incident Name: SCU LIGHTNING COMPLEX		2. Operational Period: Date From: 08/28/20 Date To: 08/29/20 Time From: 0700 Time To: 0700				3. Branch II		Division O	
4. Operations Personnel:						Page 1 of 2		Oscar	
Operations Section Chief: S. Corn				Night Ops: J. McGough					
Branch Director: R. McLaughlin / R. Hennault				Branch Safety:					
Division/Group Supervisor: K. Mapes / R. Hennault / K. Stewart (T)				Air Attack:					
5. Resources Assigned:		** Resources Below in Bold are 12 Hour **							
Resource Identifier	ALS	LWD	Leader	Personnel	Request #	Hours	Reporting Location		
STA OES 6800A			E. Hauser	20	E-283	0700-0700	Gilroy Camp		
STA OES 1843A			C. Fabrizio	22	E-273	0700-0700	Gilroy Camp		
STA OES 5805A			J. Deamkico	21	E-280	0700-0700	Gilroy Camp		
STA XBO 6210A			J. Ault	22	E-284	0700-1900	Gilroy Camp		
STC SCU 9162C			B. Goff	18	E-171	0700-0700	Gilroy Camp		
STC LNU 9140C			R. Lawler	21	E-12	0700-0700	Gilroy Camp		
STC BTU 9211C			J. Morris	17	E-362	0700-0700	Gilroy Camp		
T/F SJS 2321			D. Barnett	20	E-504	0700-0700	Gilroy Camp		
STG SHU 9240G			B. Redding	29	C-29	0700-0700	Gilroy Camp		
STG LMU 9224G			R. Veverka	34	C-31	0700-0700	Gilroy Camp		
STG SLU 9342G			N. Herring	34	C-83	0700-0700	Gilroy Camp		
CRW T2 C-23			K. Morse	20	C-23	0700-1900	Gilroy Camp		
CRW T2 C-26			M. Spence	20	C-26	0700-1900	Gilroy Camp		
DOZ LNU 1442 →T			N. Derickson	3	E-3	0700-0700	Gilroy Camp		
DOZ MRN 1540			J. Terstegge	4	E-14	0700-0700	Gilroy Camp		
DOZ SHU 2440			C. Rauch	1	E-367	0700-0700	Gilroy Camp		
DOZ SHU 2444			K. Ensley	3	E-368	0700-0700	Gilroy Camp		
DOZ NEU 2341			M. Bellows	4	E-401	0700-0700	Gilroy Camp		
6. Work Assignments: Construct and/ or improve Fire line. Assess need for contingency lines. Conduct and hold firing operations.									
7. Special Instructions: Some areas of the division may be better served by NIFC C38 All resources on Division O to report to Gilroy Camp for logistics support with the exception of STG Strike Teams.									
8. Communications									
Name	Ch	Function	Rx Freq	Rx Tone	Tx Freq	Tx Tone	Notes		
NIFC C40	6	COMMAND	173.7500N	131.8 (T3)	163.8250N	131.8 (T3)	COPERNICUS PK LINKED W/CMD 3, 10, 11, & 38		
VTAC13	9	TACTICAL	158.7375N	156.7 (T6)	158.7375N	156.7 (T6)			
CDF T15	13	ROTARY A/G	159.2700N	192.8 (T16)	159.2700N	192.8 (T16)	ROTARY AIRCRAFT AIR TO GROUND		
CDF T20	14	FIXED WING A/G	159.3750N	192.8 (T16)	159.3750N	192.8 (T16)	FIXED WING AIRCRAFT AIR TO GROUND		
CALCORD	15	MEDICAL	156.0750N	156.7 (T6)	156.0750N	156.7 (T6)			
GUARD 27	16	EMERGENCY	168.6250N		168.6250N	110.9 (T1)	AIR GUARD		
9. Prepared by: Name: Jamie Heald			RESL			Signature: 			
ICS 204		Date/Time: 8/27/2020 2200			Personnel Count: 313				

NIMS IAP

CONTROLLED UNCLASSIFIED INFORMATION//BASIC

ASSIGNMENT LIST (ICS 204 WF)

CONTROLLED UNCLASSIFIED
INFORMATION/BASIC

1. Incident Name: SCU LIGHTNING COMPLEX	2. Operational Period: Date From: 08/28/20 Date To: 08/29/20 Time From: 0700 Time To: 0700	3. Branch Group Suppression 2 Repair
4. Operations Personnel:		Page 1 of 1

Operations Section Chief: S. Corn	Night Ops: J. McGough
Branch Director: S. Ward (12) / E. Orre (12)	Branch Safety:
Division/Group Supervisor: A. Anastasi (12)	Air Attack:

5. Resources Assigned:	** Resources Below in Bold are 12 Hour **						
Resource Identifier	ALS	LWD	Leader	Personnel	Request #	Hours	Reporting Location
DOZ PVT E-210 → GRP 1			A. Bushey	1	E-210	0700-1900	ICP
DOZ PVT E-211			J. Ontano	1	E-211	0700-1900	ICP
DOZ PVT E-214			B. Welch	2	E-214	0700-0700	ICP
DOZ PVT E-217 → GRP 1			R. Dudbah	1	E-217	0700-1900	ICP
DOZ PVT E-218 → GRP 1			J. Wyatt	1	E-218	0700-1900	ICP
DOZ PVT E-393			C. Graham	2	E-393	0700-0700	ICP
CHIP PVT E-480			J. Powell	3	E-480	0700-1900	ICP
CHIP PVT E-503			T. Wright	2	E-503	0700-1900	ICP
GRD PVT E-462			R. Mustin	1	E-462	0700-1900	ICP
EXC PVT E-455			S. Forde	1	E-455	0700-1900	ICP
MAS EXC PVT E-454 → GRP 1			S. Clark	1	E-454	0700-1900	ICP
W/T PVT E-241			A. Harris	1	E-241	0700-1900	ICP
W/T PVT E-245			D. Harms	2	E-245	0700-0700	ICP
W/T PVT E-248			V. Reali	1	E-248	0700-1900	ICP
W/T PVT E-253			M. Beaver	1	E-253	0700-1900	ICP
HEQB Luparello (T)			E. Luparello	1	O-422	0700-1900	ICP
HEQB Neese (T) → GRP 1			D. Neese	1	O-523	7001900	ICP

6. Work Assignments:
Assess fire suppression needs and follow plan where directed.

DOZ PVT E-220	B. Donn	2	E-220	0700-1900
DOZ PVT E-216	S. Maynard	2	E-216	0700-1900
GRD PVT E-423	E. Butts	1	E-423	0700-1900
W/T PVT E-226	L. Burton	1	E-226	0700-1900

7. Special Instructions:
All resources assigned to suppression repair are twelve hours resources.

W/T PVT E-229	D. Wood	1	E-229	0700-1900
W/T PVT E-251	S. Fairby	1	E-251	0700-1900
HEQB Hyman	M. Hyman	1	O-486	0700-1900
HEQB Mather (T)	T. Mather	1	O-485	0700-1900

8. Communications

Name	Ch	Function	Rx Freq	Rx Tone	Tx Freq	Tx Tone	Notes
CDF C1	1	COMMAND	151.3550N	103.5 (T8)	159.3000N	110.9 (T1)	MT DIABLO
VFIRE 24	12	TACTICAL	154.2725N	156.7 (T6)	154.2725N	156.7 (T6)	
CDF T15	13	ROTARY A/G	159.2700N	192.8 (T16)	159.2700N	192.8 (T16)	ROTARY AIRCRAFT AIR TO GROUND
CDF T20	14	FIXED WING A/G	159.3750N	192.8 (T16)	159.3750N	192.8 (T16)	FIXED WING AIRCRAFT AIR TO GROUND
CALCORD	15	MEDICAL	156.0750N	156.7 (T6)	156.0750N	156.7 (T6)	
GUARD 27	16	EMERGENCY	168.6250N		168.6250N	110.9 (T1)	AIR GUARD

9. Prepared by: Name: Jamie Heald RESL Signature:

ICS 204 Date/Time: 8/27/2020 2200 Personnel Count: 23

MEDICAL PLAN (ICS 206)


1. Incident Name: SCU LIGHTNING COMPLEX		2. Operational Period: Date From: 8/28/20 Date To: 8/29/20 Time From: 0700 Time To: 0700					
3. Medical Aid Stations:							
Name	Location	Contact Number/Freq	Paramedics				
Cal Mat - California Medical Assistance Team	ICP	(530) 417-4560	Yes				
MERT	ICP	(530) 417-4560	<input type="checkbox"/> No				
Gilroy Camp	Christmas Hill Park	(530) 417-4560	Yes				
4. Transportation (indicate air or ground):							
Ambulance Service	Location	Contact Number	Level of Service				
M801, M58 (Ground)	Branch I	Lightning Communication	ALS				
M7191, M7702, M815 (Ground)	Branch II	Lightning Communication	ALS				
M50, M57 (Ground)	Branch II	Lightning Communication	ALS				
Stanford Life Flight (Air)	Stanford - Santa Clara County	Lightning Communication	ALS				
CAL FIRE Copter 106 (Day Hoist)	Incident Helibase	Lightning Communication	BLS				
Guard 841 (24 hoist)	Incident Helibase	Lightning Communication	BLS				
5. Hospitals:							
Hospital Name	Address,	Contact Number(s)/ Frequency	Travel Time		Trauma Center	Burn Center	Helipad
	Lat & Long		Air	Ground			
St. Louise Regional Medical Center	9400 No Name Uno, Gilroy N37*02'08.24, W-121*34'16.15	(408) 848-8680	:31	1:35	EDAT	<input type="checkbox"/>	<input checked="" type="checkbox"/>
Santa Clara Valley Medical	751 S. Bascom Ave. San Jose N37*18'50.30, W-121*56'03.28	(408) 885-6912	:22	1:18	Level 1	<input checked="" type="checkbox"/>	<input checked="" type="checkbox"/>
Eden Medical Center Sutter Health	20103 Lake Chabot Rd Castro N37*41'56.28, W-122*05'21.36	(510) 727-3015	:22	1:18	Level 2	<input type="checkbox"/>	<input checked="" type="checkbox"/>
Stanford Health Care - ValleyCare Medical Center	5555 W. Las Positas Blvd., Pleasanton N37*41'39.93, W-121*52'51.22	(925) 416-6525	:18	1:06	Level 1	<input type="checkbox"/>	<input checked="" type="checkbox"/>
6. Special Medical Emergency Procedures							
Line Emergency Crew Supervisor will contact Division Supervisor with patient complaint/condition and location. - Division Group Supervisor Contacts: 1. Closest EMS resource 2. Communications Unit - Communications Unit Contacts: 1. Ground or Air ambulance as requested. 2. Operations 3. Safety 4. Medical Unit - Division Supervisor or designee will serve as point of contact and run medical emergency on assigned channel. 1. A pre-assigned tactical frequency (i.e. CALCORD) should be used for IWI and only for duration of the emergency. - Communications Unit will clear the Command channel for emergency traffic as needed for duration of the need.				Injury Reporting Procedures Nature of Injury: _____ Location of Patient: _____ Point of Contact: _____ Transportation Requested by: Air _____ Ground _____ Point of Pick-Up: _____ Lat: _____ Long: _____ Patient Unit ID: _____ Is an EMT with Patient: Yes _____ No _____ Age: _____ Sex: Male _____ Female _____			
Camp Emergency Contact Medical Unit with patient complaint/condition and location. Medical staff will respond to stabilize the patient. - Medical Unit contacts 1. Communications 2. Safety 3. Logistics 4. Operations 5. Crew Supervisor 6. Comp/Claims				All Emergencies - Secure the area and identified witnesses for later investigation. Keep accurate log of events.			
<input type="checkbox"/> Check box if aviation assets are utilized for rescue. If assets are used, coordinate with Air Operations.							
7. Prepared by (Medical Unit Leader): J. Segura R. Beeson (T)				Signature: _____			
8. Approved by (Safety Officer): S. Buchmeir J. Novak (T)				Signature: _____			
ICS 206		NIMS IAP		Date/Time:		8/27/2020 17:30	

ICS 205 - INCIDENT RADIO COMMUNICATIONS PLAN

1. Incident Name: SCU LIGHTNING COMPLEX BRANCH I		2. Date/Time Prepared Date: 08/27/2020 Time: 1930		3. Operational Period: Date From: 08/28/20 Time From: 0700		Date To: 08/29/20 Time To: 0700	
---	--	--	--	---	--	------------------------------------	--

4. Communications								
Ch#	Function	Name	Assigned To	Rx Freq	Rx Tone	Tx Freq	Tx Tone	Notes
1	COMMAND	CDF C1		151.3550N	103.5 (T8)	159.3000N	110.9 (T1)	MT DIABLO
2	COMMAND	NIFC C3	ALL BRANCHES	170.4250N	131.8 (T3)	168.0750N	131.8 (T3)	MT OSO LINKED W/CMD 10, 11, 38, & 40
3	COMMAND	NIFC C10	ALL BRANCHES	170.4125N	131.8 (T3)	165.9625N	131.8 (T3)	MT PACHECO LINKED W/CMD 3, 11, 38, & 40
4	COMMAND	NIFC C11	ALL BRANCHES	170.6875N	131.8 (T3)	166.5750N	131.8 (T3)	MT ALLISON LINKED W/CMD 3, 10, 38 & 40
5	COMMAND	NIFC C38	ALL BRANCHES	172.6750N	131.8 (T3)	163.0375N	131.8 (T3)	LOWA PRIETA PEAK LINKED W/CMD 3, 10, 11, & 40
6	COMMAND	NIFC C40	ALL BRANCHES	173.7500N	131.8 (T3)	163.8250N	131.8 (T3)	COPERNICUS PK LINKED W/CMD 3, 10, 11, & 38
7	TACTICAL	CDF T29	DIV V & DIV Q	151.3475N	192.8 (T16)	151.3475N	192.8 (T16)	
8	TACTICAL	CDF T30	DIV R	151.3925N	192.8 (T16)	151.3925N	192.8 (T16)	
9	TACTICAL	VTAC12	DIV I	154.4525N	156.7 (T6)	154.4525N	156.7 (T6)	
10								
11	TACTICAL	VTAC14	DIV J / K / L	159.4725N	156.7 (T6)	159.4725N	156.7 (T6)	OPS BRIEFING CHANNEL
12	TACTICAL	VFIRE 24	SUPPRESSION REPAIR	154.2725N	156.7 (T6)	154.2725N	156.7 (T6)	
13	ROTARY A/G	CDF T15	ALL BRANCHES	159.2700N	192.8 (T16)	159.2700N	192.8 (T16)	ROTARY AIRCRAFT AIR TO GROUND
14	FIXED WING A/G	CDF T20	ALL BRANCHES	159.3750N	192.8 (T16)	159.3750N	192.8 (T16)	FIXED WING AIRCRAFT AIR TO GROUND
15	MEDICAL	CALCORD	ALL BRANCHES	156.0750N	156.7 (T6)	156.0750N	156.7 (T6)	
16	EMERGENCY	GUARD 27	ALL BRANCHES	168.6250N		168.6250N	110.9 (T1)	AIR GUARD
17								
18								
19								
20	EMERGENCY	GUARD 27	ALL BRANCHES	168.6250N		168.6250N	110.9 (T1)	AIR GUARD

5. Special Instructions
 TO CONFIRM YOU HAVE THE MOST CURRENT CLONE, ENSURE YOUR DISPLAY OF CHANNEL 16 OR 20 MATCHES CHANNEL 16 OR 20 OF THE 205 - HEIGHT AND POWER ARE KEY WHEN USING RADIOS; BE AT A HIGH POINT, USE A MOBILE IF POSSIBLE, AND USE RADIO RELAYS WHEN NEEDED

6. Prepared by (Communications Unit Leader): Name: John Brooks, IMT6		Signature: 	
ICS 205 - CONTROLLED UNCLASSIFIED INFORMATION//BASIC		Date/Time: 08/27/20 1930	


ICS 205 - INCIDENT RADIO COMMUNICATIONS PLAN

1. Incident Name: SCU LIGHTNING COMPLEX BRANCH II		2. Date/Time Prepared Date: 08/27/2020 Time: 1930		3. Operational Period: Date From: 08/28/20 Time From: 0700		Date To: 08/29/20 Time To: 0700		
4. Communications								
Ch#	Function	Name	Assigned To	Rx Freq	Rx Tone	Tx Freq	Tx Tone	Notes
1								
2	COMMAND	NIFC C3	ALL BRANCHES	170.4250N	131.8 (T3)	168.0750N	131.8 (T3)	MT OSO LINKED W/CMD 10, 11, 38, & 40
3	COMMAND	NIFC C10	ALL BRANCHES	170.4125N	131.8 (T3)	165.9625N	131.8 (T3)	MT PACHECO LINKED W/CMD 3, 11, 38, & 40
4	COMMAND	NIFC C11	ALL BRANCHES	170.6875N	131.8 (T3)	166.5750N	131.8 (T3)	MT ALLISON LINKED W/CMD 3, 10, 38 & 40
5	COMMAND	NIFC C38	ALL BRANCHES	172.6750N	131.8 (T3)	163.0375N	131.8 (T3)	LOMA PRIETA PEAK LINKED W/CMD 3, 10, 11, & 40
6	COMMAND	NIFC C40	ALL BRANCHES	173.7500N	131.8 (T3)	163.8250N	131.8 (T3)	COPERNICUS PK LINKED W/CMD 3, 10, 11, & 38
7	TACTICAL	CDF T31	DIV M	159.3825N	192.8 (T16)	159.3825N	192.8 (T16)	
8	TACTICAL	VTAC11	DIV N	151.1375N	156.7 (T6)	151.1375N	156.7 (T6)	
9	TACTICAL	VTAC13	DIV O	158.7375N	156.7 (T6)	158.7375N	156.7 (T6)	
10	TACTICAL	VFIRE 23	DIV T	154.2950N	156.7 (T6)	154.2950N	156.7 (T6)	
11								
12	TACTICAL	VFIRE 24	SUPPRESSION REPAIR	154.2725N	156.7 (T6)	154.2725N	156.7 (T6)	
13	ROTARY A/G	CDF T15	ALL BRANCHES	159.2700N	192.8 (T16)	159.2700N	192.8 (T16)	ROTARY AIRCRAFT AIR TO GROUND
14	FIXED WING A/G	CDF T20	ALL BRANCHES	159.3750N	192.8 (T16)	159.3750N	192.8 (T16)	FIXED WING AIRCRAFT AIR TO GROUND
15	MEDICAL	CALCORD	ALL BRANCHES	156.0750N	156.7 (T6)	156.0750N	156.7 (T6)	
16	EMERGENCY	GUARD 27	ALL BRANCHES	168.6250N		168.6250N	110.9 (T1)	AIR GUARD
17								
18								
19								
20	EMERGENCY	GUARD 27	ALL BRANCHES	168.6250N		168.6250N	110.9 (T1)	AIR GUARD

5. Special Instructions

TO CONFIRM YOU HAVE THE MOST CURRENT CLONE, ENSURE YOUR DISPLAY OF CHANNEL 16 OR 20 MATCHES CHANNEL 16 OR 20 OF THE 205 - HEIGHT AND POWER ARE KEY WHEN USING RADIOS; BE AT A HIGH POINT, USE A MOBILE IF POSSIBLE, AND USE RADIO RELAYS WHEN NEEDED

6. Prepared by (Communications Unit Leader): Name: John Brooks, IMT6

Signature: 

ICS 205 - CONTROLLED UNCLASSIFIED INFORMATION/BASIC

NIMS IAP Date/Time: 08/27/20 1930

TRAINING MESSAGE

TRAINERS:

PLEASE REMEMBER TO REVIEW THE TASK BOOK WITH YOUR TRAINEE EACH DAY AND SET TRAINING GOALS FOR THE UPCOMING OPERATIONAL PERIODS.

TRAINEES:

IF YOU HAVE ANY QUESTIONS REGARDING YOUR TRAINING ASSIGNMENT, PLEASE CONTACT THE TRAINING SPECIALIST.

IF IT'S NOT DOCUMENTED, IT DIDN'T HAPPEN!

Any questions please contact the Training Specialist:

Shane Vargas (530) 410-4225

Dottie Shaw (619) 971-1701

Ian Crossley (530) 681-5100

ATTN: Federal Resources (specifically Federal Contracted Resources/ADs)

RE: Virtual Finance Support

If you are assigned to a CAL FIRE managed incident, you have noticed that there is no "federal" time unit on site. We have developed a virtual finance section to provide you with your invoices/time sheets. We will need for you to **scan and email** your documents to the R5.CalFire.Support@firenet.gov email address. (The CAL FIRE finance section may have a scanner available if you do not have a "scanning" app on your phone and/or computer.) In the subject line enter:

TIME - Resource # - Company/Person Name – Attachment description - Fire Name/Number

Contract Crew/Equipment:

We need for you to send us the following information (even if you have submitted it to the CAL FIRE finance unit):

- Contact name, phone number, and email for on-site "leader"
- Resource Order
- Contract (Pages 1-2 and any additional pages referencing equipment/resource information)
- Crew Manifest
- Inspection (if one was done)
- Shift Tickets (signed by you and your incident supervisor) / CTRs (signed by your incident supervisor)

Administratively Determined (AD) Resources:

We need for you to send us the following information:

- Contact phone number and email
- Resource Order
- Casual Hire Form
- CTRs (signed by your incident supervisor)

Federal Employees:

As of right now, we are not planning to create OF-288s for Federal "regular" employees. Each of you can utilize your CTRs as your backup documentation for submitting your time sheets.

IF, however you require an OF-288, we will do our best to accommodate your needs. If you are claiming Hazard Pay, just like always, you must provide a justification for the claim ("H=Hazard") is NOT enough. Use "action verbs" to explain what/why you are claiming the hazard.

WHEN YOU ARE CLOSE TO DEMOB:

- Give Finance a "Courtesy Email" 1-2 days prior to make sure all your documents have been received.
- Submit all time documentation (including travel home) ahead of demob.
- Send an email the morning of your demob to the Support email so the demob process can be started from the virtual finance group.

EMAIL: R5.CalFire.Support@firenet.gov

Please **do not** wait until the end of your assignment to get us your information. Since we are virtual, the process will take additional time.

eFC-33 INITIAL INPUT FORM

1	2	3	4	5	6	7
---	---	---	---	---	---	---

Overhead: complete one form per person.
All Others: complete one form per vehicle.

Request Number						
----------------	--	--	--	--	--	--

State	Agency	Incident Number	Incident Name	Incident Index Code	Incident PCA Code
CA					

Strike Team	Resource ID	Fire Assignment	Home Station / Office Location
S T	E-3499	C	FASO ROBLES

YOUR NORMAL DUTY SCHEDULE	24 Hr 24 Hr 8-8 7-7 Other	Portal to Portal?	YOUR AGENCY	HOME UNIT	COMMIT RELEASE	YOUR CELL PHONE #
<input checked="" type="checkbox"/> One Box		<input checked="" type="checkbox"/>	CAL FIRE	S L U		

PERSONNEL	Schedule	First Name	Last Name	Rank or Classification	# of Regular Duty Scheduled Hours per Day											
					Mon	Tue	Wed	Thu	Fri	Sat	Sun					
EMPLOYEE 1	A															
EMPLOYEE 2	B															
EMPLOYEE 3	Other															
EMPLOYEE 4																
EMPLOYEE 5																
EMPLOYEE 6																
	<input checked="" type="checkbox"/> One Box	Johnson	Robert	FC												

VEHICLE	Schedule	Other	Kind of Vehicle	Radio ID	IB No/X No
VEHICLE 1	A				
VEHICLE 2	B				
	<input checked="" type="checkbox"/> One Box		FTH	E-3499	0 2 X 1 2 3
	Chainsaw Quantity:	Portable Pump?			



Put a Dozer and it's Transport on a single form. All others, use one form per individual vehicle.

ADDITIONAL INFO

SHIFT TICKET EXAMPLE

EMERGENCY SHIFT TICKET and EVALUATION FORM					Contractor Name											
Incident or Project Name SCU LIGHTNING COMPLEX			Incident Number CASCU 005740		Request Number E#											
Agreement Number XXX - 000000 - 00			Operator #1 BOB SMITH		Operator #2 TOM SMITH											
Equipment Make CAT			Equipment Model / Type D6XM		Operator Furnished By: <input checked="" type="checkbox"/> Contractor <input type="checkbox"/> Government											
Serial Number 111111			Licence Number 111111		Operating Supplies Furnished By: <input checked="" type="checkbox"/> Contractor <input type="checkbox"/> Government											
Equipment Use (Circle) Hours Days / Miles			Equipment Status <input checked="" type="checkbox"/> Inspected <input checked="" type="checkbox"/> Under Agreement		Released by Government											
Date			Work		Withdrawn by Contractor											
Mo / Day	Start	Stop	Work	Assignment												
8/17	0700	2400	17	DIV M												
8/18	0001	0700	7	DIV M												
Remarks/Comments ** NO DAMAGE/ NO CLAIMS																
Vendor Rating					Govt. Rep. Name and Position - PRINT											
<table border="1"> <tr> <th>Poor*</th> <th>Avg.</th> <th>Good</th> <th>Exc.</th> <th>N/A</th> </tr> <tr> <td></td> <td></td> <td></td> <td></td> <td></td> </tr> </table>					Poor*	Avg.	Good	Exc.	N/A						Govt. Rep. Name and Position - PRINT Mike Weber	
Poor*	Avg.	Good	Exc.	N/A												
Met Performance Expectations					Govt. Rep. Signature <i>Mike Weber</i>											
Equipment in Safe Working Condition					Contractor Signature <i>Bob Smith</i>											
Operator Skill Level					Date 08/18/20											
Operates Safely					Time 0800											
Operator's Cooperation Level					Date 08/18/20											
Overall Performance					Time 0800											
* NOTE: Any rating of POOR requires an explanation in Comment Section.																
**Final evaluation or for more documentation, use an ICS Form 230 or equivalent.																
CALFIRE 297 (Rev 3-2011)																
Pink - Finance Blue - Home Unit HE Coordinator Yellow - Vendor White - Govt Representative																

EMERGENCY SHIFT TICKET and EVALUATION FORM					Contractor Name											
The responsible Government Officer will complete this form each shift																
Incident or Project Name SCU LIGHTNING COMPLEX			Incident Number CASCU 005740		Request Number E # Here											
Agreement Number XXX - 000000 - 00			Operator #1 BOB SMITH		Operator #2 TOM SMITH											
Equipment Make TRANSPORT/ KENWORTH			Equipment Model / Type COZAD TRAILER /26 WHEELS		Operator Furnished By: <input checked="" type="checkbox"/> Contractor <input type="checkbox"/> Government											
Serial Number 1XP3ESMP14239012			Licence Number 9999999		Operating Supplies Furnished By: <input checked="" type="checkbox"/> Contractor <input type="checkbox"/> Government											
Equipment Use (Circle) Hours Days / Miles			Equipment Status <input checked="" type="checkbox"/> Inspected <input checked="" type="checkbox"/> Under Agreement		Released by Government											
Date			Work		Withdrawn by Contractor											
Mo / Day	Start	Stop	Work	Assignment												
8/17	0700	2400	17	DIV M												
8/18	0001	0700	7	DIV M												
Remarks/Comments ** NO DAMAGE/ NO CLAIMS																
Vendor Rating					Govt. Rep. Name and Position - PRINT											
<table border="1"> <tr> <th>Poor*</th> <th>Avg.</th> <th>Good</th> <th>Exc.</th> <th>N/A</th> </tr> <tr> <td></td> <td></td> <td></td> <td></td> <td></td> </tr> </table>					Poor*	Avg.	Good	Exc.	N/A						Govt. Rep. Name and Position - PRINT Mike Weber	
Poor*	Avg.	Good	Exc.	N/A												
Met Performance Expectations					Govt. Rep. Signature <i>Mike Weber</i>											
Equipment in Safe Working Condition					Contractor Signature <i>Bob Smith</i>											
Operator Skill Level					Date 08/18/20											
Operates Safely					Time 0800											
Operator's Cooperation Level					Date 08/18/20											
Overall Performance					Time 0800											
* NOTE: Any rating of POOR requires an explanation in Comment Section.																
**Final evaluation or for more documentation, use an ICS Form 230 or equivalent.																
CALFIRE 297 (Rev 3-2011)																
Pink - Finance Blue - Home Unit HE Coordinator Yellow - Vendor White - Govt Representative																

Turn shift tickets into Time Unit.



PUBLIC INFORMATION



Official Sources of Public Information

Incident Information Line: 916-618-3195

Incident Information Line: 669-247-7431

Incident Media Line: 925-588-6809

Incident Website: www.fire.ca.gov

Email Signup: <https://tinyurl.com/CALFIREMEDIA>

Online Evacuation Map: <https://tinyurl.com/scu-evacmap>

CAL FIRE WEBSITE



SCAN ME

EMAIL SIGN UP



SCAN ME

EVACUATION MAPS



SCAN ME

STATUS	
Incident Start Date: August 16, 2020	Incident Start Time: 4:00 AM
Acreage:	Containment:
Cause: Under Investigation	Total Personnel:

Media Law

The California State Penal Code Section 409.5(d) allows the news media to enter scenes of disaster, riot, or civil disturbance. Properly identified members of the news media should not be restricted from entering locations specified within the code. However, this does not include crime scenes, and does not imply that the news media may interfere with incident operations while they are in the areas of concern. If entering such a location that is hazardous, they should be advised; media access cannot be prevented for safety reasons unless their presence would impede CAL FIRE's mitigation of the incident or the disturbing of evidence. When working around the media, remember:

- Media **is not permitted** on private property without the property owners permission.
- If approached and questioned by the media and or the public, talk about your assignment or task at hand. Remember to wear all the appropriate PPE.
- If needed call for an incident PIO through the chain of command.
- Never speculate, give opinions or speak for others.
- There is no such thing as an "off the record" comment.

CAL FIRE Social Media Policy (Social Media 0691)

Social Media is increasingly being used by public agencies, the media as well as the public. This form of communication continues to grow rapidly in order to supply the instant gratification needs of society. Therefore when on a CAL FIRE incident you will adhere to the CAL FIRE Social Media Policy, 0691. You can get further information about the CAL FIRE Social Media Policy from the incident Public Information Officer. While assigned to the incident, there will be no posting of:

- Inappropriate information or materials
- No opinions
- No endorsements
- Inappropriate pictures or videos

Lost and Found

The Information Section will manage Lost and Found items for the incident. If you have lost an item leave your contact information and what you have lost at the Information Section. If you have found an item on the incident bring the item to the Information Section with your contact information as well.

Incident Base Camp Mailing Address

c/o Public Information Office/Trailer

4501 Pleasanton Ave.

Pleasanton, CA 94566

Pleasanton Ave.³ Street Entrance

Peer Support Team Message:

INCIDENT PEER SUPPORT:

We have a few people on the incident for any peer support related needs. The best way to get a hold of them is to call them directly.

Jeremy Sanders-916 281-6472

Shawna Powell-530 717-0667

John Kiszka-530 598-2615

Amber Henderson-805 794-1690

Clinician

Jill Gustafson-530 957-8020

or

CAL FIRE Peer Support/Helpline

916-445-4337

Below are other Team Members not on the incident who can also be contacted directly:

Tony Howard 916-224-1543

Mike Aiello 916-584-0548

Warren Parrish 916-823-6641

Nikole Schutz 916-709-0434

Amy Head 916-956-3277

Chris Lomanto 916-247-6974

Connie Quarisa 916-213-8697

In addition to peer support, if there is a need, we can have a culturally competent Clinician available on the incident that could meet with you on an individual and/or group basis.

Watch for the signs and symptoms of stress in yourself and the people around you. Try and stay positive and get much needed rest when you can. We can do this, together!

Stay Healthy, Stay Alert and Stay Strong!

CAL FIRE Employees can also contact EAP directly at: 1-866-327-4762

SCU Lightning Incident Maps may be accessed

by going to:

<https://ftp.nifc.gov>

or google: "nifc ftp"

Click:

>Incident Specific Data

>calif_n

>!CALFIRE

>2020_Incidents

>CA-SCU-005772_SCU_Lightning_Complex

>GIS >Products

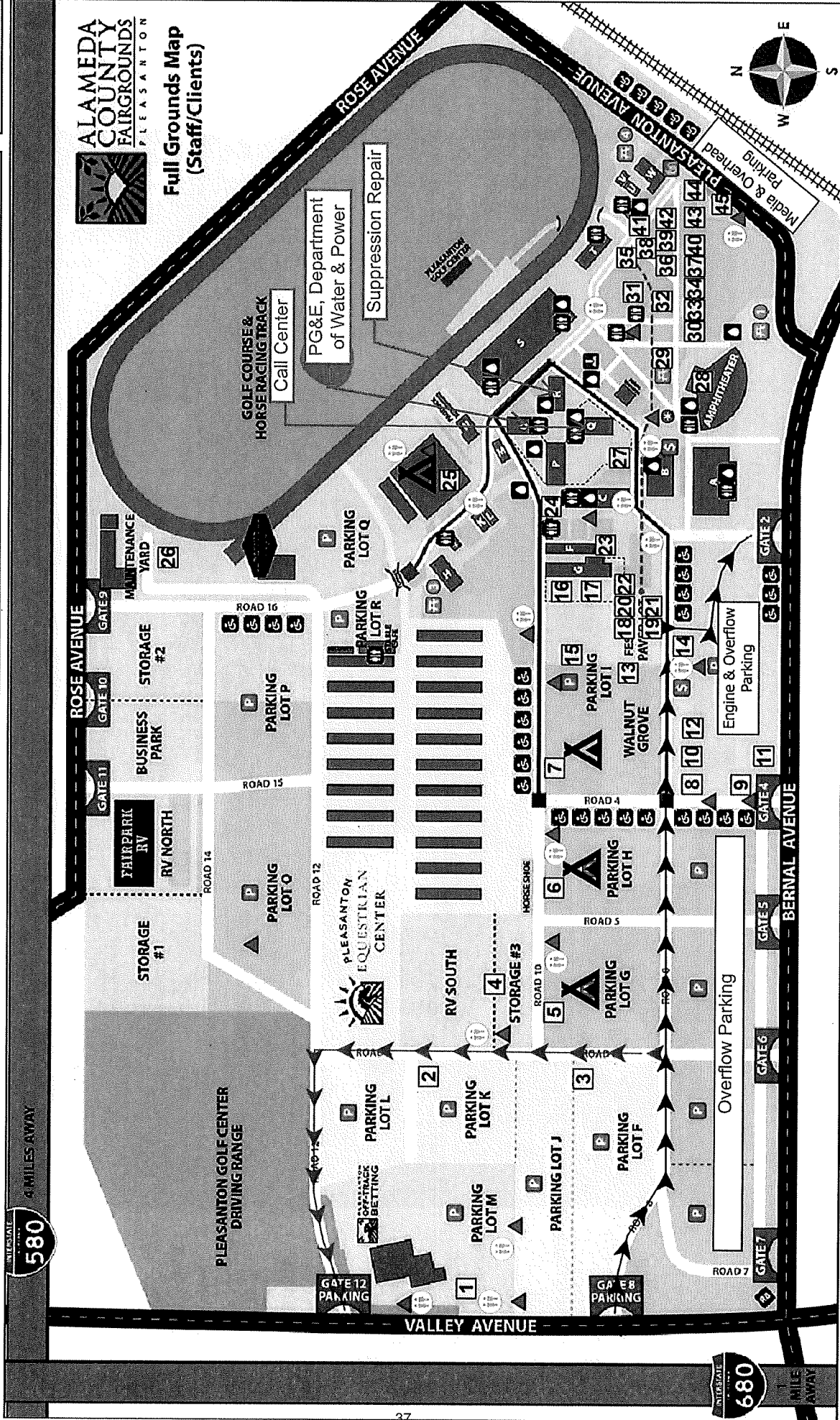
> Desired Date > Select desired map

*Generally, the single most beneficial map to download is the Ops Map



SCU LIGHTNING COMPLEX INCIDENT FACILITIES MAP

CA SCU 005740

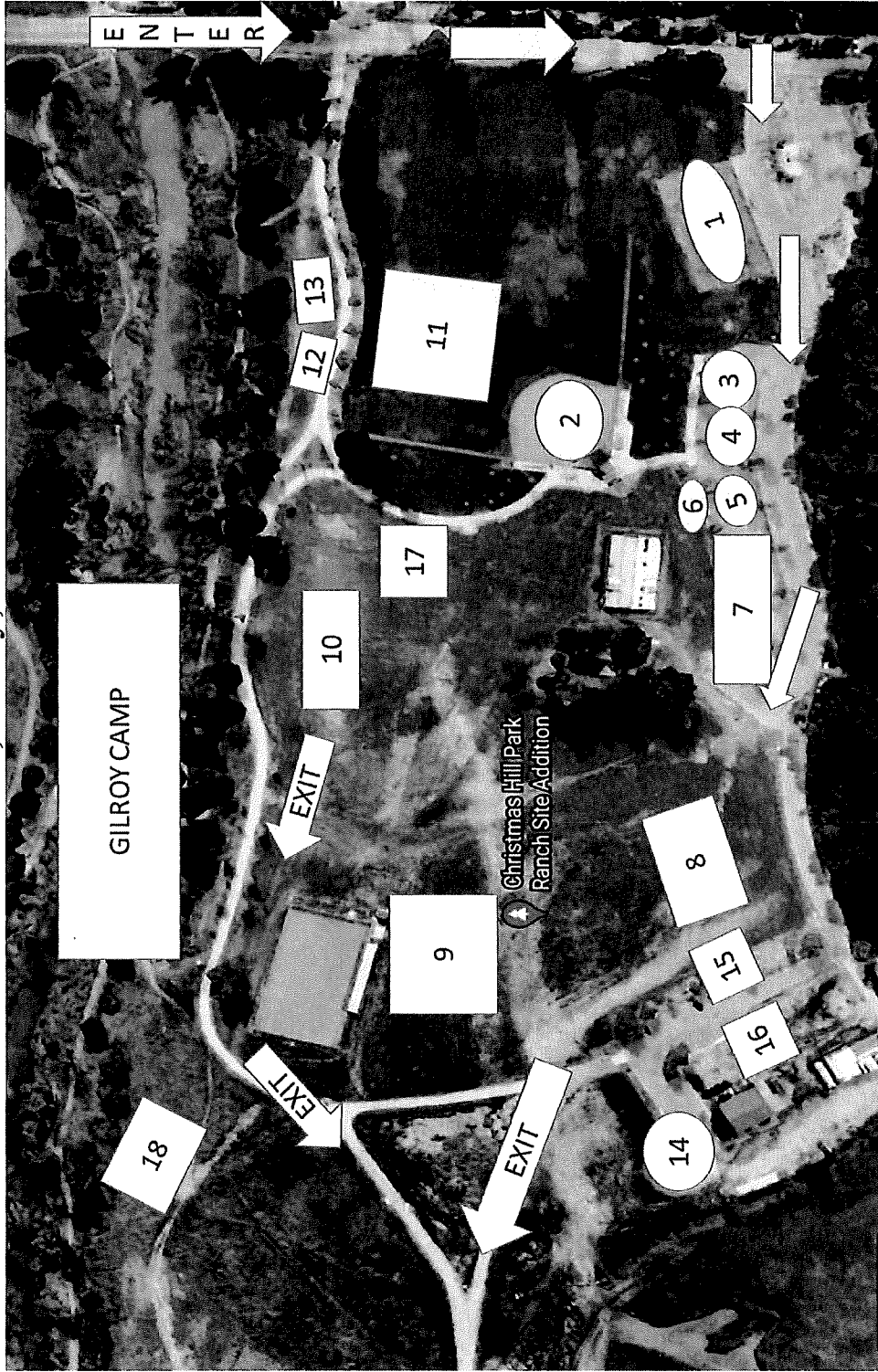


ALAMEDA COUNTY FAIRGROUNDS PLEASANTON
Full Grounds Map (Staff/Clients)

1	Ground Support	6	CCC Sleeping	11	Chainsaw Repair	16	Showers	21	Motels	26	Poable, Grey Water	31	Sheriff ALCO	36	Operations	41	IC
2	Fuel	7	Crew Sleeping	12	Lunches	17	Laundry	22	CAL OES	27	InciNet	32	Finance	37	COMMS	42	Plans
3	Dozer Parking	8	Water	13	CAL-MAT	18	Comp Claims	23	Facilities	28	Briefing	33	Safety	38	Liaison	43	Situation
4	Vendor Staging	9	Supply	14	COVID Screening	19	Check-In & Demob	24	Food Unit	29	Employee Support Services	34	FBAN	39	Resources	44	JIC
5	Vendor Sleeping	10	Ice	15	Sleep Trailers	20	Time Unit	25	Inmate Sleeping	30	Medical	35	Ordering/LOGS	40	Clerical	45	PIO

- ▲ Hand Washing Station
- ▲ Tent Area
- ▶ Porta Potty
- ▶ Dozer Route
- ▶ MAP ID
- ▶ General Route

Christmas Hill Park
7050 Miller Road, Gilroy, CA 95020

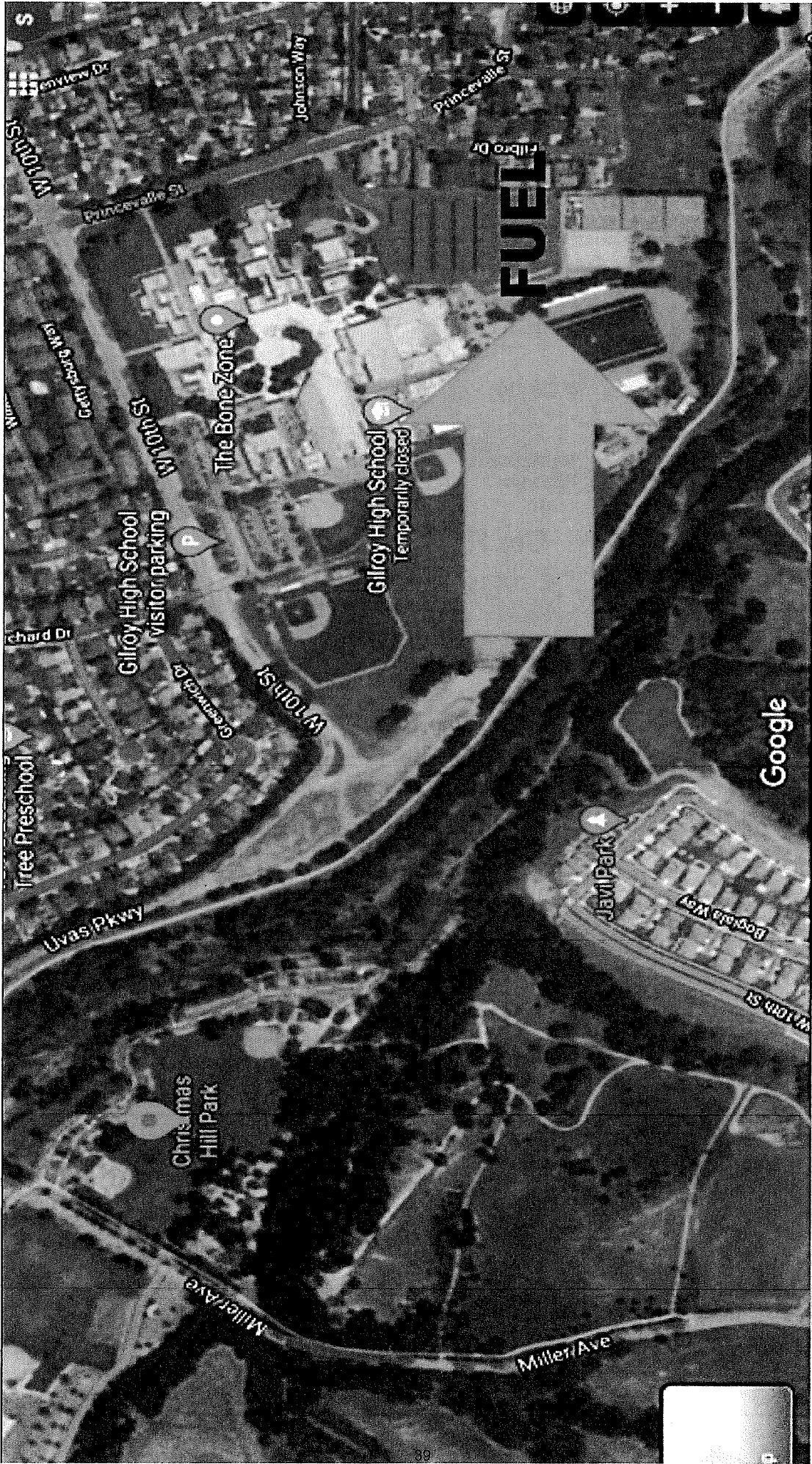


- 1. Feeding
- 2. Briefing
- 3. Plans
- 4. Motel, Logs Medical
- 5. Finance
- 6. Copy trailer
- 7. Overhead
- 8. Engines
- 9. Dozers
- 10. Fuel
- 11. Sleeping
- 12. Showers
- 13. Laundry
- 14. Supply
- 15. Hydration
- 16. Lunches
- 17. Med tent
- 18. Trailer camping

ALL HEAVY EQUIPMENT enter off of Grenache Way (use 7121 Grenache Way for GPS directions)

All others use Miller Road as your main entrance

Gilroy Camp
Fuel is located at Gilroy High School 750 W 10th St Gilroy

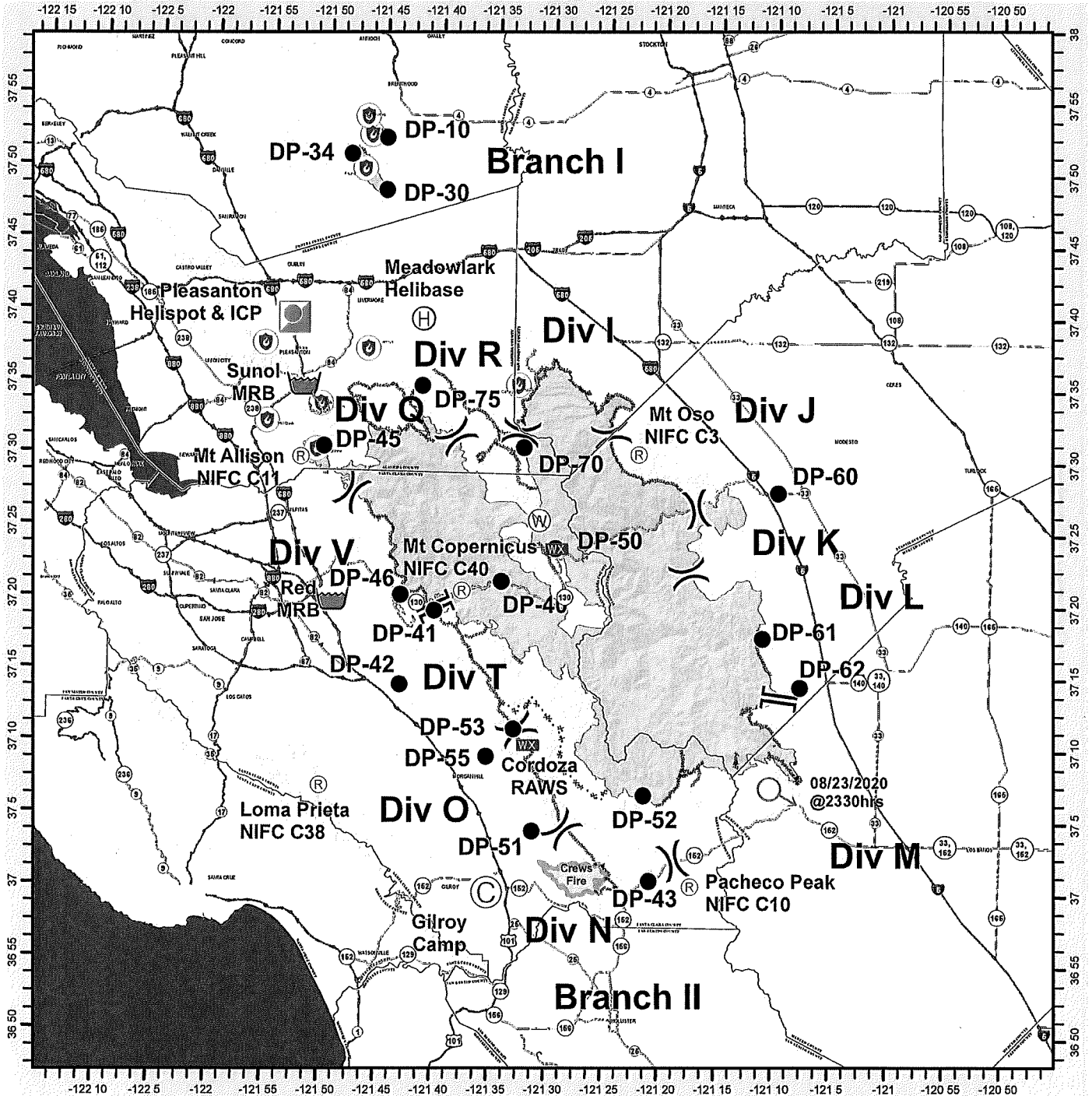


Fuel is located at Gilroy High School 750 W 10th St, Gilroy CA
95020



SCU LIGHTNING COMPLEX INCIDENT TRANSPORTATION MAP

CA SCU 005740



CAL FIRE - INCIDENT MANAGEMENT TEAM 6 *Established 1994*

1:700,000

<ul style="list-style-type: none"> Camp Drop Point Helibase Helispot Incident Command Post 	<ul style="list-style-type: none"> Mobile Weather Unit Repeater Retardant/Mud Pit Spot Fire Restricted Water Source 	<ul style="list-style-type: none"> Fire Point Division Break Branch Break Completed Dozer Line Completed Hand Line Proposed Dozer Line Wildfire Daily Fire Perimeter County
--	---	---

IMT 6 GISS
8/27/2020
2134 Hours
NAD 83 Teale Albers

DISCLAIMER
This map is a representation of the information provided to the Incident Management Team 6 and is not intended to be used for any other purpose. The information is provided as is and without warranty. The user assumes all liability for any use of this information.

