

INCIDENT ACTION PLAN

SCU LIGHTNING COMPLEX

CA-SCU-005740

Tuesday



OPERATIONAL PERIOD

8/25/2020 0700
to
8/26/2020 0700



INCIDENT OBJECTIVES (ICS 202)

1. Incident Name: SCU LIGHTNING COMPLEX	2. Operational Period:	Date From: 8/25/2020 Time From: 0700	Date To: 8/26/2020 Time To: 0700
---	-------------------------------	---	-------------------------------------

3. Objective(s):

- Management Objectives**
- Provide for emergency personnel and public safety at all times.
 - Ensure COVID-19 precautions and best practices are met at all times.
 - Protect property, improvements, and infrastructure.
 - Ensure repopulation takes place in a quick, efficient, and effective manner.
 - Ensure coordinated, timely and accurate release of public information.
 - Foster and maintain relationships with all cooperators and stakeholders.
 - Protect economic, natural, cultural and heritage resources.
 - Maintain fiscal accountability and keep costs commensurate with values at risk.

Control Objectives

- Canyon Zone and Calaveras Zone**
- Keep the fire North of Panoche Rd., Cienega Rd., and San Juan Canyon Rd,
 - Keep the fire West of I-5
 - Keep the fire South of I-580
 - Keep the fire East of I-680 and Hwy 101
- Deer Zone**
- Keep individual fires within current perimeters.

General Situational Awareness:

Steep and rugged terrain, critically dry and receptive fuel beds, active area for fire history and drought stressed trees.

In the COVID-19 environment, high density populations or large groups are particularly at risk. To help protect yourself, your family and to ensure all employees return home safely, make sure to practice social distancing.

Enhanced hygiene (especially handwashing), PPE & monitoring practices help limit the infection rate of first responders.

5. Site Safety Plan Required? Yes No

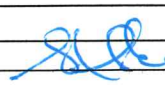
Approved Site Safety Plan(s) Located at:

6. Incident Action Plan

<input checked="" type="checkbox"/> ICS 203	<input checked="" type="checkbox"/> ICS 220	<input checked="" type="checkbox"/> PIO Message	<input checked="" type="checkbox"/> Peer Support Message
<input checked="" type="checkbox"/> ICS 204	<input checked="" type="checkbox"/> Facility Maps	<input checked="" type="checkbox"/> Transportation Map	<input type="checkbox"/>
<input checked="" type="checkbox"/> ICS 205	<input checked="" type="checkbox"/> Weather Forecast	<input checked="" type="checkbox"/> COVID Daily Check	<input type="checkbox"/>
<input checked="" type="checkbox"/> ICS 206	<input checked="" type="checkbox"/> Fire Behavior	<input checked="" type="checkbox"/> Finance Message	<input type="checkbox"/>
<input checked="" type="checkbox"/> ICS 208	<input checked="" type="checkbox"/> Training Message	<input checked="" type="checkbox"/> Shift Ticket Example	<input checked="" type="checkbox"/> ICS 214

7. Prepared By: Gabe Garcia	Position/Title: PSC1	Signature:
8. Approved by Incident Commander:	Jeff Veik	Signature:

ORGANIZATION ASSIGNMENT LIST (ICS 203)

1. Incident Name: SCU LIGHTNING COMPLEX		2. Operational Period: Date From: 8/25/2020 Time From: 0700		Date To: 8/26/2020 Time To: 0700	
3. Incident Commander(s) and Command Staff:			7. Operation Section:		
IC/UC's	J.Veik / A. Mitchell (T)	Operations	S. Corn		
Deputy	M. Blankenheim / D. Martin (T)	Deputy Operations	T. Ernst / S.Lane (T)		
Safety Officer	J. Buchmeier / J. Novak (T)	Night Ops	J. McGough		
Information Officer	R. Brocchini / R. Lubben (T)	Staging Area			
Liaison Officer	M. Villalpando / J. Kiszka (T)	Zone	Deer		
4. Agency/Organization Representatives:		Branch	III / IV		
Alameda County SO	Paul Liskey	Division/Group	B / D / F		
PG&E	Pam Perdue	Zone	Canyon		R. McLaughlin (12)
Contra Costa County SO	Rich Kovar	Branch	XV		
Santa Clara County OEM	Dana Reed	Division/Group	I J. Beeson (T)		
State Parks	Wes Gray	Division/Group	J M. Barnes		
San Joaquin County OES	Shellie Lima	Division/Group	K / L A. Anastasi		
Stanislaus County SO	Richard Murdock	Division/Group	M W. Barteau		
Stanislaus County OES	Aaron Wilson	Division/Group	N R. Engler		
Stanislaus County Fire	Eric Klevmyr	Division/Group	Contingency		M. Milojevich
CCC	Shawn Fry	Zone	Calaveras		S. Lanzas (12)
Santa Clara County SO	Thea Lera	Branch	XXI / XXIII / XXIV		
TID	Jason Hicks	Branch	XXV		M. Martinez (12)
San Francisco Water	Rick Duffey	Division/Group	O		
CALOES	Jim Linn	Division/Group	T A. Hernandez		
East Bay Regional Park	Brian Cordeiro	Division/Group	V Z. Main (T) (12)		
Alameda County FD	Eric Moore	Branch	XXVI		D. Esades (12)
Livermore-Pleasanton	Jeff Peters (FIRE)	Division/Group	Q M. Morganstern (T)		
San Benito County	E. Taylor (Sheriff) K.Mangano (EOC)	Division/Group	R J. Salazar		
Merced Co Sheriff	Ray Frastad	Branch			
CAL OES Fire	John Salvate	Division/Group	Suppression Repair		E. Orre
5. Planning Section:		Division/Group			
Chief	G. Garcia	Division/Group			
Deputy	S. Sherwood (T)	Division/Group			
Resource Unit	J. Anderson / D. Scheurich / J. Heald (T)	Branch			
Situation Unit	N. Wallingford / R. Broomfield (T)	Division/Group			
Documentation Unit	M. Schaeffer	Division/Group			
Demobilization Unit	J. Worden / M. Schaeffer	Division/Group			
GISS	T. Knecht	Division/Group			
FBAN	S. Volmer	Air Operations Branch		Director:	B. Kremensky
IMET	R. Walbrun	Air Support Group Supervisor		P. Mateer	
Training Tech Spec	S. Vargas / I. Crosslay (T)	Air Tactical Group Supervisor			
6. Logistics Section		Helibase Manager		R. Johnson / L. Kalfsbeek (T)	
Chief	S. Dohman				
Deputy Chief	J. Warden	8. Finance/Administration Section:			
Supply Unit	P. Lee	Chief	G. Belk		
Facilities Unit	B.Luis/D. Zumkeller (T)	Deputy Chief	R. Browne		
Ground Support Unit	J. Luckenbach	Time Unit	J. Navarro		
Communications Unit	J. Brooks	Procurement Unit	J. Andrade		
Medical Unit	J. Segura / R. Beeson (T)	Comp/Claims Unit	B. Stirton		
Motel Unit	B. Brewer	Cost Unit	J. Tapia		
Prepared By: Name:	S. Sherwood	Position/Title:	PSC1	Signature:	
ICS 203		Date/Time:	8/24/2020 2300 hours		



SCU Lightning Complex Fire Weather Forecast



FORECAST NO: 7

NAME OF FIRE: SCU Lightning Complex

PREDICTION FOR: 0700 Tue-0700 Weds

UNIT: CALFIRE Santa Clara

SHIFT DATE: Aug 25th-Aug 26th

SIGNED:

TIME AND DATE

Incident Meteorologist-Ryan Walbrun

FORECAST ISSUED: 2000 Aug 24th

WEATHER DISCUSSION: A seasonable weather pattern looks to be setting up today and lasting through much of the upcoming week. Fire Weather conditions will be moderated with seasonable daytime highs from the mid 80s lower slopes of the Calaveras Zone and mid 90s hottest interior portions of the Canyon Zone. General winds will be westerly and strongest over the higher terrain and northwest facing sections of the Calaveras Zone such as around Div Q. Winds over the Canyon Zone will be light and mainly terrain driven. Smoke will be most prevalent over the Canyon Zone as westerly transport winds push interior smoke eastward. Humidity values will be seasonably dry, lowering 22-32% afternoon hours. Continue to expect night time crashing of the humidity from around 2am-6am, especially above 1500-2000 feet interior portions of the Calaveras and Canyon Zones which can lead to rapid increases in fire behavior during the pre-dawn hours from fuels burning out or burning operations.

WEATHER FORECAST FOR TUESDAY:

WEATHER: Smoke and haze under mostly sunny skies

TEMPERATURES: Highs 85-90 lower slopes of Calaveras Zone exposed to the Bay breezes.
Highs 91-96 interior sections of the Canyon Zone.

HUMIDITY: 25-35% Calaveras Zone, wettest below 1500 feet. 15-25% Canyon Zone.

20 FT WINDS:

- Ridgetop: Southwest 5-10 mph afternoon gusts 15-20 mph strongest Div Q and I.
- Slopes : Upslope/Upcanyon 3-8 mph late afternoon gusts 12 mph Canyon Zone drainages.
- Hwy 152: Expect strong and gusty west winds **near Div M** as the fire approaches **Pacheco Pass** and gets close to San Luis Reservoir. **Afternoon and evening westerly gusts 30 mph.**

STABILITY/INVERSION: Moderate morning inversion breaking by midday Calaveras Zone then Canyon.

WEATHER FORECAST FOR TUESDAY NIGHT:

WEATHER: Smoke and haze otherwise mostly clear skies over the fire with clouds on the lower slopes.

TEMPERATURES: Lows 57-65 lower slopes of Calaveras Zone and 66-75 above 1500 feet.


HUMIDITY RECOVERY: 55-65% but locally 25-35% hills of the Canyon Fire above 1500 feet.

20 FT WINDS: Ridgetop: Southwest winds 5-10 mph evening gusts 15 mph.
Slopes : Downcanyon 2-5 mph.

STABILITY/INVERSION: Stable inversion layer setting up overnight.

Extended Forecast: Wednesday through Saturday a seasonable weather pattern looks to set up. Look for daytime highs mid 80s to mid 90s. Humidity will lower 15-25% with good recovery on the lower slopes. Night time drying trends will likely continue across the Canyon Zone as the marine layer makes its way into the Santa Clara and East Bay Valleys. Prevailing wind direction will be Westerly 5-10 mph gusts 15-20 mph afternoon hours.

FIRE BEHAVIOR FORECAST

FORECAST NUMBER: 8	TYPE OF FIRE: WILDFIRE
FIRE NAME: SCU LIGHTNING COMPLEX CASCU-005740	OPERATIONAL PERIOD: 8/25-8/26/20 0700-0700
DATE ISSUED: 8/24/20	TIME ISSUED: 2000
UNIT: SANTA CLARA	SIGNED:  Typed/printed: Stephen Volmer FBAN

INPUTS

WEATHER SUMMARY:

Seasonable weather will enter the area, and will last through next week. Humidity values will be dry, lowering in the afternoon to the low 20's. Temperatures will vary between the Calaveras and Canyon Zones due to the ocean breezes. Expect high 80's on the lower slopes of the Calaveras Zone, and mid 90's on the interior portions of the Canyon Zone. Nighttime humidity will crash to low teens between 2am and 6am each night in the areas above 1,500' elevation. Winds over the Canyon zone will be light and terrain driven, while the Calaveras Zone will experience strong westerly winds.

OUTPUTS

FIRE BEHAVIOR

FUEL MODEL	RATE OF SPREAD FT/MIN	FLAME LENGTH FT	SPOTTING DISTANCE	PROBABILITY OF IGNITION
GRASS	45-87	7	.20 mi	90%
BRUSH	46-81	19	.40 mi	90%
OAK OVERSTORY	11-21	11	.30 mi	90%

GENERAL:

Fuels are currently at seasonal levels, and below the 90th percentile. Brush fields have a large amount of dead material in them from the previous years of drought and lack of fire history. Fuels above 1,500' elevation have been burning extremely well in the early morning hours due to the humidity dropping each night. When fuels, wind, and topography are all in alignment you can expect dangerous rates of spread. The winds along Hwy 152 can be very strong from the west and will eddy in the canyons and drainages found there.

*****Values above are valid for any new starts in the area*****

SPECIFIC:

- **New ignitions will become established quickly in the dry fuels.**
- **Take the weather often throughout the shift to track the changing trends and conditions.**
- **The fire will slow greatly when it enters Oak and Pine stands.**

AIR OPERATIONS: Visibility will clear up by midday when the inversion lifts. Expect gusty conditions over the ridgetops in the afternoon. Transport winds W 10mph. Air resources might not be available for your tactical plans due to visibility, weather, new fires, or being timed out. Have a plan in place for air resources before they arrive to maximize their efforts.

Sunset 19:44 Sunrise 06:30

SAFETY

- The best safety zone is in clean burn. Locate safety zones early in the shift, and update them as your working location changes.
- Fire weakened timber and branches will release due to winds. Roadways will become blocked easily.

SAFETY MESSAGE/PLAN (ICS 208)

1. Incident Name: SCU LIGHTNING COMPLEX	2. Operational Period:	Date From: 8/25/20 Time From: 0700	Date To: 8/26/20 Time To: 0700
---	-------------------------------	---------------------------------------	-----------------------------------

COVID-19: Continue your efforts in following the plan.
WASH your FACE COVERINGS!

As we turn the corner on one week in - its time to check ourselves and each other. Fatigue is real; keeping each other safe is mandatory.

S
A
F
E
T
Y

DUTY: (IRPG Pg. vii) Make Sound & Timely Decisions: Maintain situational awareness, develop contingencies and consider consequences, improvise within leader's intent to handle a rapidly changing environment.

Communicate your plan, know the plan, everyone needs to be fluid with the plan so we can accomplish the plan. Your hard work does not go unnoticed, thank you for all the safe operations.

S
A
F
E
T
Y

POWERLINE SAFETY: Remember if lightning strikes high-voltage equipment or transmission lines, it can have catastrophic outcomes. Watch your over head and increase your predictions in work area.

Elevated Lightning Levels, watch for changes in wind conditions, out-flows, and new fire starts. Anticipate rapid fire growth conditions with limited resources during the shift.

S
A
F
E
T
Y

ENTRAPMENT AVOIDANCE:

Are you adhering to the 10's?

Are you considering the 18 Situations that Shout Watch Out!

Have you reviewed the Common Denominators of fire behavior on tragedy fires?

Are you maintaining LCES?

S
A
F
E
T
Y

Look Up, Look Down, Look Around!


5. Prepared By: J. Buchmeier / J. Novak (T) Position/Title: SOFR

ICS 208

Date/Time: 8/24/2020 / 2000

Signature: 

INCIDENT ACTION PLAN SAFETY ANALYSIS (ICS 215A)

1. Incident Name: SCU LIGHTNING COMPLEX	2. Operational Period:	Date From: 8/25/20 Time From: 0700	Date To: 8/26/20 Time To: 0700
Incident Area	Hazard/Risks	Mitigations	
ALL	COMPLACENCY	Don't underestimate the task at hand. Wear full PPE while on the line. Don't get caught off guard. Have the right radio clone.	
ALL	COVID 19	Adhere to local, state, federal, and CDC health guidelines. Maintain social distancing when applicable. Wear a mask for yourself and others. Report any symptoms immediately to a supervisor.	
ALL	FIRE BEHAVIOR	Know your LCES and maintain Situational Awareness. Follow the downhill line construction guidelines. Monitor weather for changes in the wind, temp, and RH during the shift. Have a contingency plan with established decision points and Safety Zones.	
ALL	FATIGUE/HEAT/DEHYDRATION	Be alert for signs of fatigue and take breaks as necessary on hot dry days. Monitor incoming resources for level of fatigue. Drink water before, during, and after shifts, up to 1.5 gal. per shift. Be alert for signs of heat stress in yourself and others; use the buddy system. Eat small meals often and when possible. Find shade when you can. Drink electrolyte drinks at a 2:1 water/sport drink ratio.	
ALL	STEEP TERRAIN/ROLLING DEBRIS	Watch your footing while hiking in steep terrain. Be careful of loose rolling debris. Maintain Situational Awareness.	
ALL	LINE CONSTRUCTION	Conduct thorough briefing for all personnel (inside rear IRPG). Ensure LCES in place prior to engagement. Establish adequate Safety Zones. Use Downhill Line Checklist. Follow "Look Up, Look Down, Look All Around" procedures. Utilize Risk Management Process...reference the IRPG.	
ALL	HAZARD TREES	Identify and isolate the area to provide for the safety of others. Flag and make proper notifications. Do not fall trees out of your certification level.	
ALL	DRIVING HAZARDS	SLOW DOWN! Long travel times to the line, stay alert. Drive defensively! Expect the unexpected around every curve. Drive with headlights and seatbelts on. Narrow roads with limited passing room. Coordinate your movements on one-lane roads, follow traffic plans.	
ALL	AIRCRAFT OPERATIONS	Monitor air-to-ground frequency, they are your eyes in the sky. Use air-to-ground frequency to communicate with aircraft. Use clear, concise statements when directing aircraft. Only utilize aircraft to insert personnel on the line when necessary. Ensure the line is clear when working with aircraft.	
ALL	PERFORM TAIL GATE SAFETY	Everyone should be briefed on the conditions and circumstances regarding the fire and their assignments per the IRPG.	
ALL	DOZER SAFETY	Watch for rolling material. Monitor safe working distances. Avoid working below dozer. Utilize communication with the operator (radio or hand signals).	
5. Prepared By: Joe Buchmeier		Position/Title: SOF1	
ICS 215A	Date/Time: 8/24/2020 / 2030	Signature: 	



CAL FIRE / INCIDENT MANAGEMENT TEAM 6

COVID-19 DAILY HEALTH CHECK SCREENING ALGORITHM



EACH WORKDAY WILL BEGIN WITH THE FOLLOWING:

Temperature recorded
Employee Screening Questionnaire

TEMPERATURE RECORDED

- Fever YES/NO? *Fever is considered $> 100.4^{\circ}$
- #### EMPLOYEE SCREENING QUESTIONNAIRE
- Are you feeling ill/feverish?
 - Are you having chills?
 - Do you have new or worsening SOB?
 - Do you have a new or worsening cough?
 - Do you have a new or prolonged sore throat?

No Fever and **No** answered to all
Employee Screening Questionnaire

Continue with Daily Operations

Yes Fever OR **Yes** answered to any of the Employee Screening Questionnaire

- Wash Hands, Don Mask and Isolate from other employees. Maintain a distance of > 6 feet.
- Notify the Company Officer and/or Strike Team Leader.
- Notify Medical Unit Leader
- Refer employee to appropriate healthcare provider for evaluation and treatment.
- Disinfect "High-touch" surface areas.

REMINDERS TO ALL EMPLOYEES

- ◇ Self-Monitor yourself while you are on and off the line. If you experience any flu-like symptoms, COVID-19 symptoms, or any Respiratory illness symptoms contact your Company Officer and or Strike Team Leader.
- ◇ Maintain proper hand hygiene. Wash hands with soap and water for 20 seconds. Utilize hand sanitizer often. Do not shake hands, touch, or hug others.
- ◇ Cover coughs or sneezes (if not masked). Cloth Masks should be exchanged and or washed daily.
- ◇ Masks are required when out in the public on non-emergency business.
- ◇ Disinfect high-touch surfaces daily.
- ◇ Practice social distancing (> 6 feet) at meal times, dormitories, in-person meeting, or while in public.



CAL FIRE / Incident Management Team 6

COVID-19 Response Algorithm



Employee Response Action Plan

COVID-19 Positive Test or COVID-19 Positive Clinical Symptoms Presentation

- COVID 19 Symptoms: Cough, SOB, Fever or afebrile, Chills, Muscle Pain, Sore throat, Loss of taste/smell
- Employee informs Company Officer and Strike Team Leader of presumed/confirmed COVID-19 symptoms.
- Employee advised to seek evaluation by Medical Unit and CAL MAT or base camp medical unit.
- Crew initiates cleaning measures. Mask, safety glasses, gloves worn. (If needed, LOGS will assist)
- Medical Unit to notified IC, Liaison, Safety and Logistics ASAP. Medical Unit will notify COVID-19 Public Health Officer and determine need for testing and locations.



Incident Action Plan

- Company Officer / Strike Team Leader notified of personnel with COVID-19 positive test or symptom.
- Medical Unit evaluates individual(s) and need for care and evaluation.
- IC, Liaison, Safety and Logistics notification made to determine course of incident evaluation and response.
- Line Chief, Agency Administrator, and Region Office updated upon notification



Facilities Response

- Medical and Safety notified
- Incident Notification
- Disinfection plan initiated.
- Resource Status Evaluated



Medical Evaluation & Contact Tracing

- Personnel interviewed by Medical Unit . List of Positive contacts made in the last 5 days acquired. All Exposed are required to wear surgical mask, self monitor for Fever/Resp symptoms for up to 14 days (exposed personnel are subject to COVID-19 testing)
- Home Unit / Department utilized and retrospective tracking of Positive COVID-19 personnel inter-actions are identified within the last 5 days.
- Home Unit / Department updated by Company Officer / Strike Team Leader.
- Public Health Department is contacted and updated by IC or Designated Representative.
- Positive COVID-19 Employees w/symptoms will need to be evaluated by Health Department conducting testing, prior to returning to assignment.
- Positive COVID-19 Employees w/o symptoms may be required to be evaluated and resource status will be reviewed prior to returning to assignment.

ASSIGNMENT LIST (ICS 204 WF)

CONTROLLED UNCLASSIFIED
INFORMATION//BASIC

1. Incident Name:	2. Operational Period:	3. Branch	Division
SCU LIGHTNING COMPLEX <i>Canyon Zone</i>	Date From: 08/25/20 Date To: 08/26/20 Time From: 0700 Time To: 0700	XV	M
4. Operations Personnel:		Page 1 of 1	Mike

Operations Section Chief: S. Corn	Night Ops: J. McGough
Branch Director:	Branch Safety:
Division/Group Supervisor: W. Barteau	Air Attack:

5. Resources Assigned:	** Resources Below in Bold are 12 Hour **							
Resource Identifier	ALS	LWD	Leader	Personnel	Request #	Hours	Reporting Location	
STC SHU 9241C			J. Capen	17	E-358	0700-0700	ICP	
T/F IDAHO 1			J. Cook	17	E-374	0700-0700	ICP	
DOZ SCU 1644			S. Mcvay	4	E-350	0700-0700	ICP	
DOZ PVT E-216			S. Maynard	2	E-216	0700-0700	ICP	
DOZ PVT E-219			B. Hendrix	2	E-219	0700-0700	ICP	
W/T SCC 68			M. Gil	2	E-128	0700-0700	ICP	
W/T PVT E-224			N. Kusalich	2	E-224	0700-0700	ICP	
W/T PVT E-238			T. Waltjen	2	E-238	0700-0700	ICP	
W/T PVT E-240			M. Sanchez	1	E-240	0700-1900	ICP	
W/T PVT E-241			A. Harris	2	E-241	0700-0700	ICP	
W/T PVT E-242			J. Zulu	2	E-242	0700-0700	ICP	
W/T PVT E-243			J. Mgary	2	E-243	0700-0700	ICP	
W/T PVT E-253			M. Beaver	2	E-253	0700-0700	ICP	

6. Work Assignments:
Construct and/ or improve Fire line.

7. Special Instructions:
All resources on Division M to report to Gilroy Camp for logistics support with the exception of the STG Strike Teams.

8. Communications

Name	Ch	Function	Rx Freq	Rx Tone	Tx Freq	Tx Tone	Notes
NIFC C10	3	COMMAND	170.4125N	131.8 (T3)	165.9625N	131.8 (T3)	MT PACHECO LINKED W/CMD 3, 11, 38, & 40
VFIRE 24	10	TACTICAL	154.2725N	156.7 (T6)	154.2725N	156.7 (T6)	BRANCH XV
CDF T20	14	AIR TO GROUND	159.3750N	192.8 (T16)	159.3750N	192.8 (T16)	
CALCORD	15	MEDICAL	156.0750N	156.7 (T6)	156.0750N	156.7 (T6)	
GUARD 21	16	EMERGENCY	168.6250N		168.6250N	110.9 (T1)	AIR GUARD

9. Prepared by: Name: Jamie Heald RESL Signature: _____

ICS 204 Date/Time: 8/24/2020 2200 Personnel Count: 57

ASSIGNMENT LIST (ICS 204 WF)

CONTROLLED UNCLASSIFIED
INFORMATION//BASIC

1. Incident Name:	2. Operational Period:	3. Branch	Division
SCU LIGHTNING COMPLEX <i>Canyon Zone</i>	Date From: 08/25/20 Date To: 08/26/20 Time From: 0700 Time To: 0700	XV	N

4. Operations Personnel: Page 1 of 1 November

Operations Section Chief: S. Corn	Night Ops: J. McGough
Branch Director:	Branch Safety:
Division/Group Supervisor: R. Engler	Air Attack:

5. Resources Assigned:	** Resources Below in Bold are 12 Hour **						
Resource Identifier	ALS	LWD	Leader	Personnel	Request #	Hours	Reporting Location
STF XAL 2006F			T. Pappas	18	E-269	0700-0700	ICP
ENG6 XAL 5681			S. Huerta	3	E-379	0700-0700	ICP
STH AEU 9270H			M. Abeloe	37	C-1	0700-0700	ICP
CRW T2 C-23			K. Morse	20	C-23	0700-1900	ICP
DOZ NEU 2341			M. Bellows	4	E-401	0700-0700	ICP
DOZ PVT E-392			B. Shannon	2	E-392	0700-0700	ICP
DOZ PVT E-400			G. Grewer	1	E-400	0700-1900	ICP
W/T XAL 6			G. Dunbar	2	E-335	0700-0700	ICP
W/T PVT E-232			N. Aguilar	2	E-232	0700-0700	ICP
W/T PVT E-233			R. Hurl	2	E-233	0700-0700	ICP
W/T PVT E-239			P. Yokoyama	2	E-239	0700-0700	ICP
W/T PVT E-248			V. Reali	2	E-248	0700-0700	ICP

6. Work Assignments:
Construct and/ or improve Fire line.

7. Special Instructions:
Some areas of the division may be better served by NIFC C38 or NIFC C10
All resources on Division N to report to Gilroy Camp for logistics support with the exception of the STG Strike Teams.

8. Communications

Name	Ch	Function	Rx Freq	Rx Tone	Tx Freq	Tx Tone	Notes
NIFC C40	6	COMMAND	173.7500N	131.8 (T3)	163.8250N	131.8 (T3)	COPERNICUS PK LINKED W/CMD 3, 10, 11, & 38
VFIRE 24	10	TACTICAL	154.2725N	156.7 (T6)	154.2725N	156.7 (T6)	BRANCH XV
CDF T20	14	AIR TO GROUND	159.3750N	192.8 (T16)	159.3750N	192.8 (T16)	
CALCORD	15	MEDICAL	156.0750N	156.7 (T6)	156.0750N	156.7 (T6)	
GUARD 21	16	EMERGENCY	168.6250N		168.6250N	110.9 (T1)	AIR GUARD

9. Prepared by: Name: Jamie Heald RESL Signature: _____
ICS 204 Date/Time: 8/24/2020 2200 Personnel Count: 95

ASSIGNMENT LIST (ICS 204 WF)

CONTROLLED UNCLASSIFIED
INFORMATION//BASIC

1. Incident Name:	2. Operational Period:	3. Branch	Division
SCU LIGHTNING COMPLEX <i>Calaveras Zone</i>	Date From: 08/25/20 Date To: 08/26/20 Time From: 0700 Time To: 0700	XXV	O
4. Operations Personnel:		Page 1 of 1	Oscar

Operations Section Chief: S. Corn	Night Ops: J. McGough
Branch Director: M. Martinez (12)	Branch Safety:
Division/Group Supervisor:	Air Attack:

5. Resources Assigned:		** Resources Below in Bold are 12 Hour **					
Resource Identifier	ALS	LWD	Leader	Personnel	Request #	Hours	Reporting Location
STG BTU 9212G			K. Finkenkeller	33	C-89	0700-0700	DP 53
DOZ LNU 1442			N. Derickson	3	E-3	0700-0700	DP 53
DOZ LNU 1445			C. Boschi	3	E-453	0700-0700	DP 53
DOZ LNU 1449			B. Pots	3	E-366	0700-0700	DP 53
DOZ MRN 1540			J. Terstegge	4	E-14	0700-0700	DP 53
DOZ SHU 2440			C. Rauch	1	E-367	0700-0700	DP 53
DOZ SHU 2444			K. Ensley	3	E-368	0700-0700	DP 53
DOZ PVT E-213			A. Daniels	2	E-213	0700-0700	DP 53
DOZ PVT E-215			L. Arias	3	E-215	0700-0700	DP 53
DOZ PVT E-220			B. Dunn	2	E-220	0700-0700	DP 53
DOZ PVT E-222			S. Mahood	2	E-222	0700-0700	DP 53
W/T PVT E-6			B. Indiher	2	E-6	0700-1900	DP 53
W/T PVT E-235			J. Epperson	2	E-235	0700-0700	DP 53
W/T PVT E-246			K. Koontz	2	E-246	0700-0700	DP 53
GRD PVT E-423			E. Butts	1	E-423	0700-1900	DP 53

6. Work Assignments:
Construct and/ or improve Fire line.
Assess need for contingency lines.


7. Special Instructions:
All resources on Division O to report to Gilroy Camp for logistics support with the exception of the STG Strike Teams.

8. Communications							
Name	Ch	Function	Rx Freq	Rx Tone	Tx Freq	Tx Tone	Notes
NIFC C40	6	COMMAND	173.7500N	131.8 (T3)	163.8250N	131.8 (T3)	COPERNICUS PK LINKED W/CMD 3, 10, 11, & 38
CDF T30	13	TACTICAL	151.3925N	192.8 (T16)	151.3925N	192.8 (T16)	CALAVERAS ZONE BR XXV
CDF T20	14	AIR TO GROUND	159.3750N	192.8 (T16)	159.3750N	192.8 (T16)	
CALCORD	15	MEDICAL	156.0750N	156.7 (T6)	156.0750N	156.7 (T6)	
GUARD 21	16	EMERGENCY	168.6250N		168.6250N	110.9 (T1)	AIR GUARD

9. Prepared by: Name:	Jamie Heald	RESL	Signature:
ICS 204	Date/Time: 8/24/2020	2200	Personnel Count: 66

ASSIGNMENT LIST (ICS 204 WF)

CONTROLLED UNCLASSIFIED
INFORMATION/BASIC

1. Incident Name:		2. Operational Period:				3. Branch		Division	
SCU LIGHTNING COMPLEX <i>Calaveras Zone</i>		Date From: 08/25/20	Date To: 08/26/20			XXVI		Q	
		Time From: 0700	Time To: 0700			Page 1 of 1		Quebec	
4. Operations Personnel:									
Operations Section Chief: S. Corn					Night Ops: J. McGough				
Branch Director: D. Esades (12)					Branch Safety:				
Division/Group Supervisor: M. Morganstern (T)					Air Attack:				
5. Resources Assigned:									
** Resources Below in Bold are 12 Hour **									
Resource Identifier	ALS	LWD	Leader	Personnel	Request #	Hours	Reporting Location		
STC BDU 9351C			A. Ramirez	19	E-444	0700-0700	ICP		
STC SCU 9160C			S. Blythe	22	E-169	0700-0700	ICP		
STC SCU 9161C			R. West	17	E-170	0700-0700	ICP		
T/F San Joaquin 4810			C. Allen	20	E-425	0700-0700	ICP		
STH SHU 9242H			J. Smutz	26	C-87	0700-0700	ICP		
CRW T-2 C-17			C. Hubbard	20	C-17	0700-1900	ICP		
STL HUU 9128L			T. Meyers	9	E-365	0700-0700	ICP		
STL LMU 9226L			T. McKinney	5	E-333	0700-0700	ICP		
STL TGU 9250L			L. Thomas	7	E-54	0700-0700	ICP		
DOZ BTU 2142			T. Adams	2	E-57	0700-0700	ICP		
DOZ CON 221			C. Freyler	4	E-293	0700-0700	ICP		
DOZ NEU 2346			D. Miner	3	E-4	0700-0700	ICP		
W/T PVT E-225			S. Debois	2	E-225	0700-0700	ICP		
W/T PVT E-226			L. Burton	2	E-226	0700-0700	ICP		
W/T PVT E-229			D. Wood	1	E-229	0700-1900	ICP		
W/T PVT E-230			D. Hughes	2	E-230	0700-0700	ICP		
FALM O-371			T. Davant	1	O-371	0700-1900	ICP		
6. Work Assignments:									
Construct and/ or improve Fire line.									
Assess need for contingency lines.									
7. Special Instructions:									
8. Communications									
Name	Ch	Function	Rx Freq	Rx Tone	Tx Freq	Tx Tone	Notes		
NIFC C11	4	COMMAND	170.6875N	131.8 (T3)	166.5750N	131.8 (T3)	MT ALLISON LINKED W/CMD 3, 10, 38 & 40		
VTAC12	10	TACTICAL	154.4525N	156.7 (T6)	154.4525N	156.7 (T6)	CALAVERAS ZONE BR XXVI		
CDF T20	14	AIR TO GROUND	159.3750N	192.8 (T16)	159.3750N	192.8 (T16)			
CALCORD	15	MEDICAL	156.0750N	156.7 (T6)	156.0750N	156.7 (T6)			
GUARD 21	16	EMERGENCY	168.6250N		168.6250N	110.9 (T1)	AIR GUARD		
9. Prepared by: Name:									
Jamie Heald			RESL			Signature: 			
ICS 204		Date/Time: 8/24/2020 2200			Personnel Count: 162				

ASSIGNMENT LIST (ICS 204 WF)

CONTROLLED UNCLASSIFIED
INFORMATION//BASIC

1. Incident Name:	2. Operational Period:	3. Branch	Division
SCU LIGHTNING COMPLEX Calaveras Zone	Date From: 08/25/20 Date To: 08/26/20 Time From: 0700 Time To: 0700	XXVI	R
4. Operations Personnel:		Page 1 of 1	Romeo

Operations Section Chief: S. Corn	Night Ops: J. McGough
Branch Director: D. Esades (12)	Branch Safety:
Division/Group Supervisor: J. Salazar	Air Attack:

5. Resources Assigned:	** Resources Below in Bold are 12 Hour **						
Resource Identifier	ALS	LWD	Leader	Personnel	Request #	Hours	Reporting Location
STC MEU 9110C			A. Whitlock	18	E-41	0700-0700	ICP
T/F CNR 10			D. Holm	20	E-426	0700-1900	ICP
STG LMU 9223G			C. Bonner	35	C-30	0700-0700	ICP
CRW T2 C-25			T. Jensen	20	C-25	0700-1900	ICP
DOZ XAL CO17			M. Adams	2	E-372	0700-0700	ICP
DOZ PVT E-214			B. Welch	2	E-214	0700-0700	ICP
DOZ PVT E-223			L. Gill	2	E-223	0700-0700	ICP
W/T PVT E-234			J. Bendall	2	E-234	0700-0700	ICP
W/T PVT E-250			R. Anderson	1	E-250	0700-1900	ICP
W/T PVT E-252			B. Trocha	2	E-252	0700-0700	ICP
FALM O-370			B. Toth	1	O-370	0700-1900	ICP

6. Work Assignments:
 Construct and/ or improve Fire line.
 Assess need for contingency lines.

7. Special Instructions:

8. Communications

Name	Ch	Function	Rx Freq	Rx Tone	Tx Freq	Tx Tone	Notes
NIFC C40	6	COMMAND	173.7500N	131.8 (T3)	163.8250N	131.8 (T3)	COPERNICUS PK LINKED W/CMD 3, 10, 11, & 38
CDF T29	9	TACTICAL	151.3475N	192.8 (T16)	151.3475N	192.8 (T16)	CALAVERAS ZONE BR XXVI
CDF T20	14	AIR TO GROUND	159.3750N	192.8 (T16)	159.3750N	192.8 (T16)	
CALCORD	15	MEDICAL	156.0750N	156.7 (T6)	156.0750N	156.7 (T6)	
GUARD 21	16	EMERGENCY	168.6250N		168.6250N	110.9 (T1)	AIR GUARD

9. Prepared by: Name: Jamie Heald RESL Signature:


ICS 204 Date/Time: 8/24/2020 2200 Personnel Count: 105

MEDICAL PLAN (ICS 206)

1. Incident Name: SCU LIGHTNING COMPLEX		2. Operational Period: Date From: 8/25/20 Date To: 8/26/20 Time From: 0700 Time To: 0700					
3. Medical Aid Stations:							
Name	Location	Contact Number/Freq	Paramedics				
Cal Mat - California Medical Assistance Team	ICP	Lightning Communication	Yes				
MERT	ICP	(530) 417-4560	<input type="checkbox"/> No				
Gilroy Camp	Christmas Hill Park	(530) 417-4560	Yes				
4. Transportation (indicate air or ground):							
Ambulance Service	Location	Contact Number	Level of Service				
Medic 97, M801, M58 (Ground)	Calaveras Zone	Lightning Communication	ALS				
M7191, M7702, M815 (Ground)	Canyon Zone - Stanislaus County	Lightning Communication	ALS				
AMR Santa Clara Valley	Christmas Hill Park	Lightning Communication	ALS				
Stanford Life Flight (Air)	Stanford - Santa Clara County	Lightning Communication	ALS				
CAL FIRE Copter 106 (Day Hoist)	Incident Helibase	Lightning Communication	ALS				
Guard 822 (Air) Night Ops	Redding	Lightning Communication	ALS				
5. Hospitals:							
Hospital Name	Address,	Contact Number(s)/ Frequency	Travel Time		Trauma Center	Burn Center	Helipad
	Lat & Long Helipad		Air	Ground			
St. Louise Regional Medical Center	9400 No Name Uno, Gilroy N37*02'08.24, W-121*34'16.15	(408) 848-8680	31	1:35	EDAT	<input type="checkbox"/>	<input checked="" type="checkbox"/>
Santa Clara Valley Medical	751 S. Bascom Ave. San Jose N37*18'50.30, W-121*56'03.28	(408) 885-6912	22	1:18	Level 1	<input checked="" type="checkbox"/>	<input checked="" type="checkbox"/>
Eden Medical Center	20103 Lake Chabot Rd Castro N37*41'56.28, W-122*05'21.36	(510) 727-3015	22	1:18	Level 2	<input type="checkbox"/>	<input checked="" type="checkbox"/>
Stanford Health Care	5555 W. Las Positas Blvd., Pleasanton N37*41'39.93, W-121*52'51.22	(925)416-6525	18	1:06	Level 1	<input type="checkbox"/>	<input checked="" type="checkbox"/>
6. Special Medical Emergency Procedures							
Line Emergency Crew Supervisor will contact Division Supervisor with patient complaint/condition and location. - Division Group Supervisor Contacts: 1. Closest EMS resource 2. Communications Unit - Communications Unit Contacts: 1. Ground or Air ambulance as requested. 2. Operations 3. Safety 4. Medical Unit - Division Supervisor or designee will serve as point of contact and run medical emergency on assigned channel. 1. A pre-assigned tactical frequency (i.e. CALCORD) should be used for IWI and only for duration of the emergency. - Communications Unit will clear the Command channel for emergency traffic as needed for duration of the need.				Injury Reporting Procedures Nature of Injury: _____ Location of Patient: _____ Point of Contact: _____ Transportation Requested by: Air _____ Ground _____ Point of Pick-Up: _____ Lat: _____ Long: _____ Patient Unit ID: _____ Is an EMT with Patient: Yes _____ No _____ Age: _____ Sex: Male _____ Female _____			
Camp Emergency Contact Medical Unit with patient complaint/condition and location. Medical staff will respond to stabilize the patient. - Medical Unit contacts 1. Communications 2. Safety 3. Logistics 4. Operations 5. Crew Supervisor 6. Comp/Claims				All Emergencies - Secure the area and identified witnesses for later investigation. Keep accurate log of events.			
<input type="checkbox"/> Check box if aviation assets are utilized for rescue. If assets are used, coordinate with Air Operations.							
7. Prepared by (Medical Unit Leader): J. Segura R. Beeson (T)				Signature: _____			
8. Approved by (Safety Officer): S. Buchmeir J. Novak (T)				Signature: _____			
ICS 206		NIMS IAP		Date/Time:		8/24/2020 17:30	

ICS 205 - INCIDENT RADIO COMMUNICATIONS PLAN

CONTROLLED UNCLASSIFIED INFORMATION/BASIC

1. Incident Name: SCU LIGHTNING COMPLEX CANYON ZONE		2. Date/Time Prepared Date: 08/24/2020 Time: 1930		3. Operational Period: Date To: 08/26/20 Time To: 0700				
4. Communications								
Ch#	Function	Name	Assigned To	Rx Freq	Rx Tone	Tx Freq	Tx Tone	Notes
1								
2	COMMAND	NIFC C3	ALL BRANCHES	170.4250N	131.8 (T3)	168.0750N	131.8 (T3)	MT OSO LINKED W/CMD 10, 11, 38, & 40
3	COMMAND	NIFC C10	ALL BRANCHES	170.4125N	131.8 (T3)	165.9625N	131.8 (T3)	MT PACHECO LINKED W/CMD 3, 11, 38, & 40
4	COMMAND	NIFC C11	ALL BRANCHES	170.6875N	131.8 (T3)	166.5750N	131.8 (T3)	MT ALLISON LINKED W/CMD 3, 10, 38 & 40
5	COMMAND	NIFC C38	ALL BRANCHES	172.6750N	131.8 (T3)	163.0375N	131.8 (T3)	LOMA PRIETA PEAK LINKED W/CMD 3, 10, 11, & 40
6	COMMAND	NIFC C40	ALL BRANCHES	173.7500N	131.8 (T3)	163.8250N	131.8 (T3)	COPERNICUS PK LINKED W/CMD 3, 10, 11, & 38
7								
8	TACTICAL	VTAC14	DIV I & DIV J	159.4725N	156.7 (T6)	159.4725N	156.7 (T6)	BRANCH XV
9	TACTICAL	VFIRE 23	DIV K / L	154.2950N	156.7 (T6)	154.2950N	156.7 (T6)	BRANCH XV
10	TACTICAL	VFIRE 24	DIV M & DIV N	154.2725N	156.7 (T6)	154.2725N	156.7 (T6)	BRANCH XV
11								
12	TACTICAL	CDF T30	CANYON CONTEGENCY	151.3925N	192.8 (T16)	151.3925N	192.8 (T16)	
13								
14	AIR TO GROUND	CDF T20	ALL BRANCHES	159.3750N	192.8 (T16)	159.3750N	192.8 (T16)	
15	MEDICAL	CALCORD	ALL BRANCHES	156.0750N	156.7 (T6)	156.0750N	156.7 (T6)	
16	EMERGENCY	GUARD 21	ALL BRANCHES	168.6250N		168.6250N	110.9 (T1)	AIR GUARD
17								
18								
19								
20	EMERGENCY	GUARD 21	ALL BRANCHES	168.6250N		168.6250N	110.9 (T1)	AIR GUARD
5. Special Instructions						TO CONFIRM YOU HAVE THE MOST CURRENT CLONE, ENSURE YOUR DISPLAY OF CHANNEL 16 OR 20 MATCHES CHANNEL 16 OR 20 OF THE 205 - HEIGHT AND POWER ARE KEY WHEN USING RADIOS; BE AT A HIGH POINT, USE A MOBILE IF POSSIBLE, AND USE RADIO RELAYS WHEN NEEDED		
6. Prepared by (Communications Unit Leader): Name: John Brooks, IMT6			Signature: 			Date/Time: 08/24/20 1930		
ICS 205 - CONTROLLED UNCLASSIFIED INFORMATION/BASIC						NIMS IAP		

ICS 205 - INCIDENT RADIO COMMUNICATIONS PLAN

1. Incident Name: SCU LIGHTNING COMPLEX DEER & CALAVERAS		2. Date/Time Prepared Date: 08/24/2020 Time: 1930		3. Operational Period: Date From: 08/25/20 Time From: 0700		Date To: 08/26/20 Time To: 0700	
---	--	--	--	---	--	------------------------------------	--

4. Communications								
Ch#	Function	Name	Assigned To	Rx Freq	Rx Tone	Tx Freq	Tx Tone	Notes
1	COMMAND	CDF C1	DEER ZONE	151.3550N	103.5 (T8)	159.3000N	110.9 (T1)	MT DIABLO - BR III / IV
2	COMMAND	NIFC C3	CANYON / CALAVERAS	170.4250N	131.8 (T3)	168.0750N	131.8 (T3)	MT OSO LINKED W/CMD 10, 11, 38, & 40
3	COMMAND	NIFC C10	CANYON / CALAVERAS	170.4125N	131.8 (T3)	165.9625N	131.8 (T3)	MT PACHECO LINKED W/CMD 3, 11, 38, & 40
4	COMMAND	NIFC C11	CANYON / CALAVERAS	170.6875N	131.8 (T3)	166.5750N	131.8 (T3)	MT ALLISON LINKED W/CMD 3, 10, 38 & 40
5	COMMAND	NIFC C38	CANYON / CALAVERAS	172.6750N	131.8 (T3)	163.0375N	131.8 (T3)	LOMA PRIETA PEAK LINKED W/CMD 3, 10, 11, & 40
6	COMMAND	NIFC C40	CANYON / CALAVERAS	173.7500N	131.8 (T3)	163.8250N	131.8 (T3)	COPERNICUS PK LINKED W/CMD 3, 10, 11, & 38
7	TACTICAL	VFIRE 24	DEER ZONE	154.2725N	156.7 (T6)	154.2725N	156.7 (T6)	BR III / IV
8	TACTICAL	VTAC11	BR XXI / BR XXIII / BR XXIV	151.1375N	156.7 (T6)	151.1375N	156.7 (T6)	CALAVERAS ZONE
9	TACTICAL	CDF T29	DIV R	151.3475N	192.8 (T16)	151.3475N	192.8 (T16)	CALAVERAS ZONE BR XXVI
10	TACTICAL	VTAC12	DIV Q	154.4525N	156.7 (T6)	154.4525N	156.7 (T6)	CALAVERAS ZONE BR XXVI
11	TACTICAL	VTAC13	DIV T	158.7375N	156.7 (T6)	158.7375N	156.7 (T6)	CALAVERAS ZONE BR XXV
12	TACTICAL	VTAC14	DIV V	159.4725N	156.7 (T6)	159.4725N	156.7 (T6)	CALAVERAS ZONE BR XXV/BRIEFING BROADCAST
13	TACTICAL	CDF T30	DIV O	151.3925N	192.8 (T16)	151.3925N	192.8 (T16)	CALAVERAS ZONE BR XXV
14	AIR TO GROUND	CDF T20	ALL BRANCHES	159.3750N	192.8 (T16)	159.3750N	192.8 (T16)	
15	MEDICAL	CALCORD	ALL BRANCHES	156.0750N	156.7 (T6)	156.0750N	156.7 (T6)	
16	EMERGENCY	GUARD 21	ALL BRANCHES	168.6250N		168.6250N	110.9 (T1)	AIR GUARD
17								
18								
19								
20	EMERGENCY	GUARD 21	ALL BRANCHES	168.6250N		168.6250N	110.9 (T1)	AIR GUARD

5. Special Instructions
 TO CONFIRM YOU HAVE THE MOST CURRENT CLONE, ENSURE YOUR DISPLAY OF CHANNEL 16 OR 20 MATCHES CHANNEL 16 OR 20 OF THE 205 - HEIGHT AND POWER ARE KEY WHEN USING RADIOS; BE AT A HIGH POINT, USE A MOBILE IF POSSIBLE, AND USE RADIO RELAYS WHEN NEEDED

6. Prepared by (Communications Unit Leader): Name: John Brooks, IMT6		Signature: 	
ICS 205 - CONTROLLED UNCLASSIFIED INFORMATION/BASIC		Date/Time: 08/24/20 1930	

TRAINING MESSAGE

TRAINERS:

PLEASE REMEMBER TO REVIEW THE TASK BOOK WITH YOUR TRAINEE EACH DAY AND SET TRAINING GOALS FOR THE UPCOMING OPERATIONAL PERIODS.

TRAINEES:

IF YOU HAVE ANY QUESTIONS REGARDING YOUR TRAINING ASSIGNMENT, PLEASE CONTACT THE TRAINING SPECIALIST.

IF IT'S NOT DOCUMENTED, IT DIDN'T HAPPEN!

Any questions please contact the Training Specialist:

Shane Vargas (530) 410-4225

Dottie Shaw (619) 971-1701

Ian Crossley (530) 681-5100

ATTN: Federal Resources (specifically Federal Contracted Resources/ADs)

RE: Virtual Finance Support

If you are assigned to a CAL FIRE managed incident, you have noticed that there is no “federal” time unit on site. We have developed a virtual finance section to provide you with your invoices/time sheets. We will need for you to **scan and email** your documents to the R5.CalFire.Support@firenet.gov email address. (The CAL FIRE finance section may have a scanner available if you do not have a “scanning” app on your phone and/or computer.) In the subject line enter:

TIME - Resource # - Company/Person Name – Attachment description - Fire Name/Number

Contract Crew/Equipment:

We need for you to send us the following information (even if you have submitted it to the CAL FIRE finance unit):

- Contact name, phone number, and email for on-site “leader”
- Resource Order
- Contract (Pages 1-2 and any additional pages referencing equipment/resource information)
- Crew Manifest
- Inspection (if one was done)
- Shift Tickets (signed by you and your incident supervisor) / CTRs (signed by your incident supervisor)

Administratively Determined (AD) Resources:

We need for you to send us the following information:

- Contact phone number and email
- Resource Order
- Casual Hire Form
- CTRs (signed by your incident supervisor)

Federal Employees:

As of right now, we are not planning to create OF-288s for Federal “regular” employees. Each of you can utilize your CTRs as your backup documentation for submitting your time sheets.

IF, however you require an OF-288, we will do our best to accommodate your needs. If you are claiming Hazard Pay, just like always, you must provide a justification for the claim (“H=Hazard”) is NOT enough. Use “action verbs” to explain what/why you are claiming the hazard.

WHEN YOU ARE CLOSE TO DEMOB:

- Give Finance a “Courtesy Email” 1-2 days prior to make sure all your documents have been received.
- Submit all time documentation (including travel home) ahead of demob.
- Send an email the morning of your demob to the Support email so the demob process can be started from the virtual finance group.

EMAIL: R5.CalFire.Support@firenet.gov

Please **do not** wait until the end of your assignment to get us your information. Since we are virtual, the process will take additional time.

SHIFT TICKET EXAMPLE

EMERGENCY SHIFT TICKET and EVALUATION FORM					Contractor Name DOZER DUDE						
Incident or Project Name SCU LIGHTNING COMPLEX		Incident Number CASCU 005740	Request Number E#		Operator #1 BOB SMITH	Operator #2 TOM SMITH					
Agreement Number XXX - 000000 - 00					Operator Furnished By: <input checked="" type="checkbox"/> Contractor <input type="checkbox"/> Government						
Equipment Make CAT		Equipment Model / Type D6XM			Operating Supplies Furnished By: <input checked="" type="checkbox"/> Contractor <input type="checkbox"/> Government						
Serial Number 111111		Licence Number 111111			Equipment Status <input checked="" type="checkbox"/> Inspected <input checked="" type="checkbox"/> Under Agreement						
Equipment Use (Circle) Hours Days / Miles					Released by Government Withdrawn by Contractor						
Date	Start	Stop	Work	Assignment							
8/17	0700	2400	17	DIV M							
8/18	0001	0700	7	DIV M							
					Remarks/Comments ** NO DAMAGE/ NO CLAIMS						
Vendor Rating					Govt. Rep. Name and Position - PRINT Mike Weber						
<table border="1"> <tr> <td>Poor*</td> <td>Avg.</td> <td>Good</td> <td>Exc.</td> <td>N/A</td> </tr> </table>					Poor*	Avg.	Good	Exc.	N/A	Govt. Rep. Signature <i>Mike Weber</i>	
Poor*	Avg.	Good	Exc.	N/A							
Met Performance Expectations					Contractor Signature <i>Bob Smith</i>						
Equipment in Safe Working Condition					Date 08/18/20						
Operator Skill Level					Time 0800						
Operates Safely					Date 08/18/20						
Operator's Cooperation Level					Time 0800						
Overall Performance					Date 08/18/20						
					Time 0800						
* NOTE: Any rating of POOR requires an explanation in Comment Section.					CALFIRE 287						
**Final evaluation or for more documentation, use an ICS Form 230 or equivalent.					(Rev 3-2011)						
Pink - Finance		Blue - Home Unit HE Coordinator		Yellow - Vendor		White - Govt Representative					

Vendor Rating must be done.

EMERGENCY SHIFT TICKET and EVALUATION FORM					Contractor Name DUDE TRANSPORT						
The responsible Government Officer will complete this form each shift					Operator #1 BOB SMITH						
Incident or Project Name SCU LIGHTNING COMPLEX		Incident Number CASCU 005740	Request Number E # Here		Operator #2 TOM SMITH						
Agreement Number XXX - 000000 - 00					Operator Furnished By: <input checked="" type="checkbox"/> Contractor <input type="checkbox"/> Government						
Equipment Make TRANSPORT/ KENWORTH		Equipment Model / Type COZAD TRAILER /26 WHEELS			Operating Supplies Furnished By: <input checked="" type="checkbox"/> Contractor <input type="checkbox"/> Government						
Serial Number 1XP3ESMP14239012		Licence Number 9999999			Equipment Status <input checked="" type="checkbox"/> Inspected <input checked="" type="checkbox"/> Under Agreement						
Equipment Use (Circle) Hours Days / Miles					Released by Government Withdrawn by Contractor						
Date	Start	Stop	Work	Assignment							
8/17	0700	2400	17	DIV M							
8/18	0001	0700	7	DIV M							
					Remarks/Comments ** NO DAMAGE/ NO CLAIMS						
Vendor Rating					Govt. Rep. Name and Position - PRINT Mike Weber						
<table border="1"> <tr> <td>Poor*</td> <td>Avg.</td> <td>Good</td> <td>Exc.</td> <td>N/A</td> </tr> </table>					Poor*	Avg.	Good	Exc.	N/A	Govt. Rep. Signature <i>Mike Weber</i>	
Poor*	Avg.	Good	Exc.	N/A							
Met Performance Expectations					Contractor Signature <i>Bob Smith</i>						
Equipment in Safe Working Condition					Date 08/18/20						
Operator Skill Level					Time 0800						
Operates Safely					Date 08/18/20						
Operator's Cooperation Level					Time 0800						
Overall Performance					Date 08/18/20						
					Time 0800						
* NOTE: Any rating of POOR requires an explanation in Comment Section.					CALFIRE 287						
**Final evaluation or for more documentation, use an ICS Form 230 or equivalent.					(Rev 3-2011)						
Pink - Finance		Blue - Home Unit HE Coordinator		Yellow - Vendor		White - Govt Representative					

Vendor Rating must be done.

Turn shift tickets into Time Unit.



PUBLIC INFORMATION



Official Sources of Public Information

Incident Information Line: 916-618-3195

Incident Information Line: 669-247-7431

Incident Media Line: 925-588-6809

Incident Website: www.fire.ca.gov

Email Signup: <https://tinyurl.com/CALFIREMEDIA>

Online Evacuation Map: <https://tinyurl.com/scu-evacmap>

CAL FIRE WEBSITE



SCAN ME

EMAIL SIGN UP



SCAN ME

EVACUATION MAPS



SCAN ME

STATUS

Incident Start Date: August 16, 2020

Incident Start Time: 4:00 AM

Acreage:

Containment:

Cause: Under Investigation

Total Personnel:

Media Law

The California State Penal Code Section 409.5(d) allows the news media to enter scenes of disaster, riot, or civil disturbance. Properly identified members of the news media should not be restricted from entering locations specified within the code. However, this does not include crime scenes, and does not imply that the news media may interfere with incident operations while they are in the areas of concern. If entering such a location that is hazardous, they should be advised; media access cannot be prevented for safety reasons unless their presence would impede CAL FIRE's mitigation of the incident or the disturbing of evidence. When working around the media, remember:

- Media **is not permitted** on private property without the property owners permission.
- If approached and questioned by the media and or the public, talk about your assignment or task at hand. Remember to wear all the appropriate PPE.
- If needed call for an incident PIO through the chain of command.
- Never speculate, give opinions or speak for others.
- There is no such thing as an "off the record" comment.

CAL FIRE Social Media Policy (Social Media 0691)

Social Media is increasingly being used by public agencies, the media as well as the public. This form of communication continues to grow rapidly in order to supply the instant gratification needs of society. Therefore when on a CAL FIRE incident you will adhere to the CAL FIRE Social Media Policy, 0691. You can get further information about the CAL FIRE Social Media Policy from the incident Public Information Officer. While assigned to the incident, there will be no posting of:

- Inappropriate information or materials
- No opinions
- No endorsements
- Inappropriate pictures or videos

Lost and Found

The Information Section will manage Lost and Found items for the incident. If you have lost an item leave your contact information and what you have lost at the Information Section. If you have found an item on the incident bring the item to the Information Section with your contact information as well.

Incident Base Camp Mailing Address

c/o Public Information Office/Trailer

4501 Pleasanton Ave.

Pleasanton, CA 94566

Pleasanton Ave. ³² Street Entrance

Peer Support Team Message:

INCIDENT PEER SUPPORT:

We have a few people on the incident for any peer support related needs. The best way to get a hold of them is to call them directly.

Jeremy Sanders-916 281-6472

Shawna Powell-530 717-0667

John Kiszka-530 598-2615

Amber Henderson-805 794-1690

Clinician

Jill Gustafson-530 957-8020

or

CAL FIRE Peer Support/Helpline

916-445-4337

Below are other Team Members not on the incident who can also be contacted directly:

Tony Howard 916-224-1543

Mike Aiello 916-584-0548

Warren Parrish 916-823-6641

Nikole Schutz 916-709-0434

Amy Head 916-956-3277

Chris Lomanto 916-247-6974

Connie Quarisa 916-213-8697

In addition to peer support, if there is a need, we can have a culturally competent Clinician available on the incident that could meet with you on an individual and/or group basis.

Watch for the signs and symptoms of stress in yourself and the people around you. Try and stay positive and get much needed rest when you can. We can do this, together!

Stay Healthy, Stay Alert and Stay Strong!

CAL FIRE Employees can also contact EAP directly at: 1-866-327-4762

SCU Lightning Incident Maps may be accessed

by going to:

<https://ftp.nifc.gov>

or google: "nifc ftp"

Click:

>Incident Specific Data

>calif_n

>!CALFIRE

>2020_Incidents

>CA-SCU-005740_SCU_Lightning_Complex

>GIS >Products

> Desired Date > Select desired map

>Generally, the single most beneficial map to download is the Ops Map

SCU LIGHTNING COMPLEX INCIDENT FACILITIES MAP

CA SCU 005740



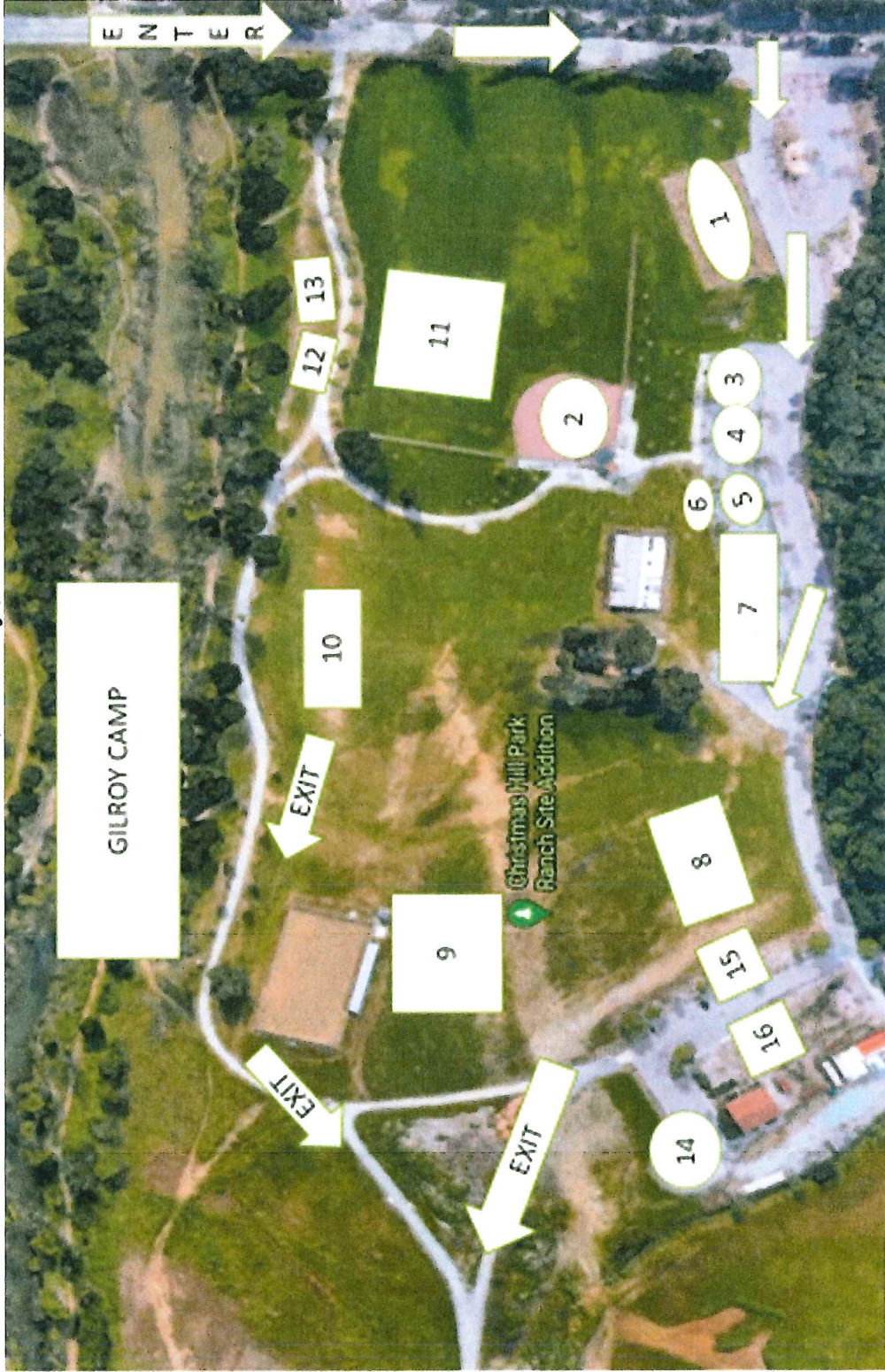
ALAMEDA COUNTY FAIRGROUNDS PLEASANTON

Full Grounds Map (Staff/Clients)



1	Ground Support	6	CCC Sleeping	11	Tools & Equipment	16	Showers	21	Motels	26	Potable, Grey Water	31	Sheriff ALCO	36	Operations	41	IC
2	Fuel	7	Tents	12	Lunches	17	Laundry	22	CAL OES	27	IncoNet	32	Finance	37	COMMS	42	Plans
3	Dozer Parking	8	Water	13	CAL MAT	23	Comp Claims	28	Facilities	28	Briefing	33	Safety	38	Liaison	43	Situation
4	Vendor Staging	9	Supply	14	COVID Testing	19	Check-in & Demob	24	Food Unit	29	Employee Support Services	34	FBAN	39	Resources	44	JIC
5	Vendor Sleeping	10	Ice	15	Sleep Trailers	20	Time Unit	25	Inmate Tents	30	Medical	35	Ordering/LOGS	40	Clerical	45	PIO

Christmas Hill Park
 7050 Miller Road, Gilroy, CA 95020



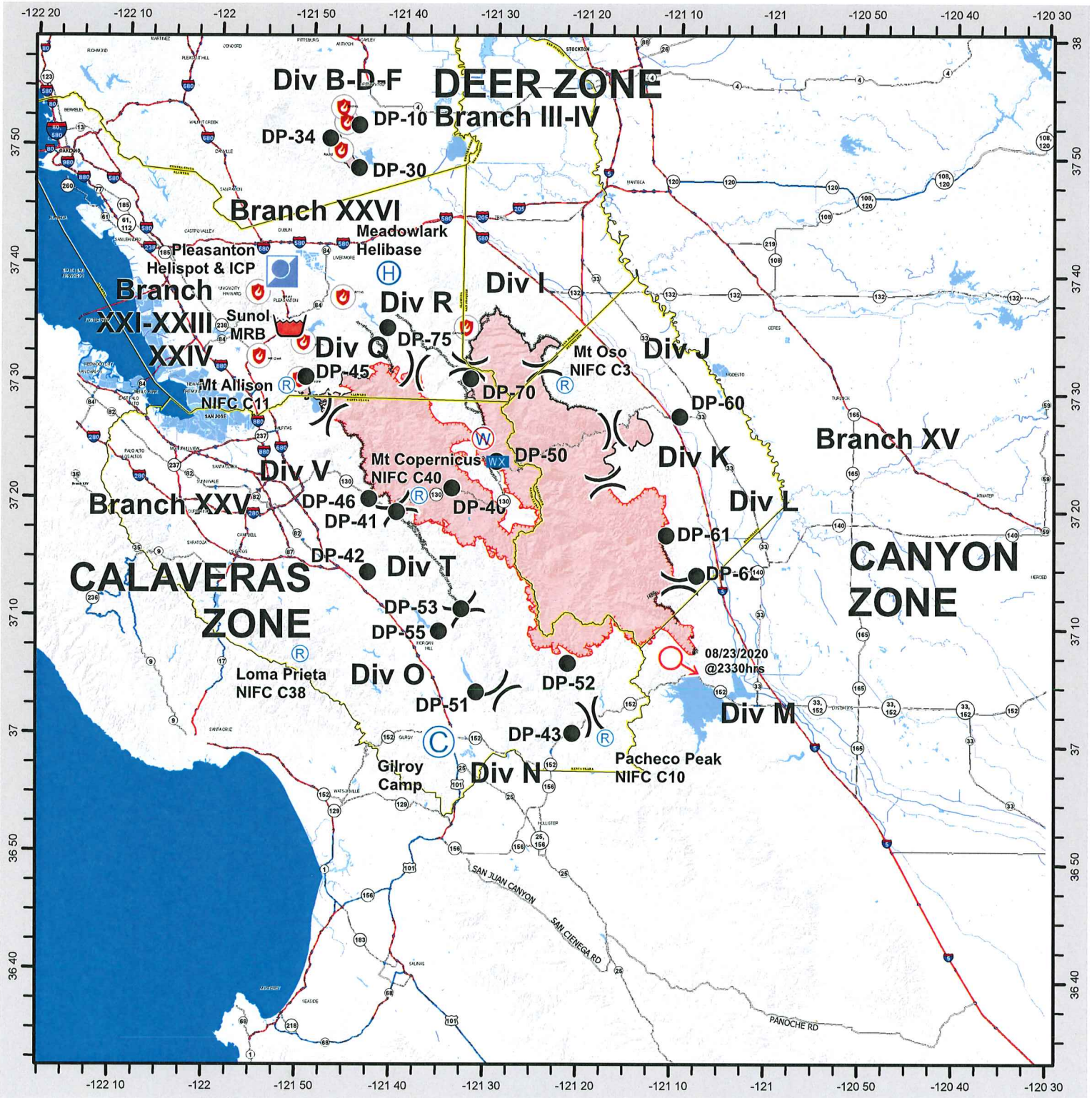
1. Feeding
2. Briefing
3. Plans
4. Motel, Logs
Medical
5. Finance
6. Copy trailer
7. Overhead
8. Engines
9. Dozers
10. Fuel
11. Sleeping
12. Showers
13. Laundry
14. Supply
15. Hydration
16. Lunches

ALL HEAVY EQUIPMENT enter off of Grenache Way (use 7121 Grenache Way for GPS directions)
 All others use Miller Road as your main entrance



SCU LIGHTNING COMPLEX INCIDENT TRANSPORTATION MAP

CA SCU 005740 - 8/25/2020



County or Equivalent	Helispot	Spot Fire	Uncontrolled Fire Edge
Camp	Incident Command Post	Restricted Water Source	Contained Line
Drop Point	Mobile Weather Unit	Fire Point	Completed Dozer Line
Helibase	Repeater	Division Break	Completed Hand Line
Retardant/Mud Pit			

IMT 6 GISS
8/25/2020
0006 Hours
NAD 83 Teale Albers

CAL FIRE
The information on this map is for informational purposes only. The information is not intended to be used for any other purpose. The information is not intended to be used for any other purpose. The information is not intended to be used for any other purpose.

THIS PAGE INTENTIONALLY LEFT BLANK

