

INCIDENT ACTION PLAN

SCU LIGHTNING COMPLEX

CA-SCU-005740

Wednesday



OPERATIONAL PERIOD

8/26/2020 0700
to
8/27/2020 0700



INCIDENT OBJECTIVES (ICS 202)

1. Incident Name: SCU LIGHTNING COMPLEX	2. Operational Period:	Date From: 8/26/2020 Time From: 0700	Date To: 8/27/2020 Time To: 0700
---	-------------------------------	---	-------------------------------------

3. Objective(s):

- Management Objectives**
- Provide for emergency personnel and public safety at all times.
 - Ensure COVID-19 precautions and best practices are met at all times.
 - Protect property, improvements, and infrastructure.
 - Ensure repopulation takes place in a quick, efficient, and effective manner.
 - Ensure coordinated, timely and accurate release of public information.
 - Foster and maintain relationships with all cooperators and stakeholders.
 - Protect economic, natural, cultural and heritage resources.
 - Maintain fiscal accountability and keep costs commensurate with values at risk.

Control Objectives

- Canyon Zone and Calaveras Zone**
- Keep the fire North of Panoche Rd., Cienega Rd., and San Juan Canyon Rd,
 - Keep the fire West of I-5
 - Keep the fire South of I-580
 - Keep the fire East of I-680 and Hwy 101
- Deer Zone**
- Keep individual fires within current perimeters.

General Situational Awareness:

Steep and rugged terrain, critically dry and receptive fuel beds, active area for fire history and drought stressed trees.

In the COVID-19 environment, high density populations or large groups are particularly at risk. To help protect yourself, your family and to ensure all employees return home safely, make sure to practice social distancing.

Enhanced hygiene (especially handwashing), PPE & monitoring practices help limit the infection rate of first responders.

5. Site Safety Plan Required? Yes No


Approved Site Safety Plan(s) Located at:

6. Incident Action Plan

<input checked="" type="checkbox"/> ICS 203	<input checked="" type="checkbox"/> ICS 220	<input checked="" type="checkbox"/> PIO Message	<input checked="" type="checkbox"/> Peer Support Message
<input checked="" type="checkbox"/> ICS 204	<input checked="" type="checkbox"/> Facility Maps	<input checked="" type="checkbox"/> Transportation Map	<input type="checkbox"/>
<input checked="" type="checkbox"/> ICS 205	<input checked="" type="checkbox"/> Weather Forecast	<input checked="" type="checkbox"/> COVID Daily Check	<input type="checkbox"/>
<input checked="" type="checkbox"/> ICS 206	<input checked="" type="checkbox"/> Fire Behavior	<input checked="" type="checkbox"/> Finance Message	<input type="checkbox"/>
<input checked="" type="checkbox"/> ICS 208	<input checked="" type="checkbox"/> Training Message	<input checked="" type="checkbox"/> Shift Ticket Example	<input checked="" type="checkbox"/> ICS 214

7. Prepared By:	Gabe Garcia	Position/Title: PSC1	Signature:
8. Approved by Incident Commander:	Jeff Veik	Signature: _____	_____

ORGANIZATION ASSIGNMENT LIST (ICS 203)

1. Incident Name: SCU LIGHTNING COMPLEX		2. Operational Period: Date From: 8/26/2020 Time From: 0700		Date To: 8/27/2020 Time To: 0700	
3. Incident Commander(s) and Command Staff:			7. Operation Section:		
IC/UC's	J.Veik / A. Mitchell (T)	Operations	S. Corn		
Deputy	M. Blankenheim / D. Martin (T)	Deputy Operations	T. Ernst / S.Lane (T)		
Safety Officer	J. Buchmeier / J. Novak (T)	Night Ops	J. McGough		
Information Officer	R. Brocchini / R. Lubben (T)	Staging Area			
Liaison Officer	M. Villalpando / J. Kiszka (T)	Zone	Deer		
4. Agency/Organization Representatives:		Branch	III / IV		
Alameda County SO	Paul Liskey	Division/Group	B / D / F		
PG&E	Pam Perdue	Zone	Canyon		R. McLaughlin (12)
Contra Costa County SO	Rich Kovar	Branch	XV		
Santa Clara County OEM	Dana Reed	Division/Group	I		
State Parks	Wes Gray	Division/Group	J		
San Joaquin County OES	Shellie Lima	Division/Group	K / L		
Stanislaus County SO	Richard Murdock	Division/Group	M		
Stanislaus County OES	Aaron Wilson	Division/Group	N		
Stanislaus County Fire	Eric Klevmyr	Division/Group	Contingency		M. Milojevich (12)
CCC	Shawn Fry	Zone	Calaveras		S. Lanzas (12)
Santa Clara County SO	Thea Lera	Branch	XXI / XXIII / XXIV		
TID	Jason Hicks	Branch	XXV		M. Martinez (12)
San Francisco Water	Rick Duffey	Division/Group	O		
CALOES	Jim Linn	Division/Group	T		
East Bay Regional Park	Brian Cordeiro	Division/Group	V		
Alameda County FD	Eric Moore	Branch	XXVI		
Livermore-Pleasanton	Jeff Peters (FIRE)	Division/Group	Q		
San Benito County	E.Taylor (Sheriff) K.Mangano (EOC)	Division/Group	R		
Merced Co Sheriff	Ray Frastad	Branch			
CAL OES Fire	John Salvate	Division/Group	Suppression Repair		E. Orre
5. Planning Section:		Division/Group			
Chief	G. Garcia	Division/Group			
Deputy	S. Sherwood (T)	Division/Group			
Resource Unit	J. Anderson / D. Scheurich / J. Heald (T)	Branch			
Situation Unit	N. Wallingford / R. Broomfield (T)	Division/Group			
Documentation Unit	M. Schaeffer	Division/Group			
Demobilization Unit	J. Worden / M. Schaeffer	Division/Group			
GISS	T. Knecht	Division/Group			
FBAN	S. Volmer	Air Operations Branch		Director:	B. Kremensky
IMET	R. Walbrun	Air Support Group Supervisor		P. Mateer	
Training Tech Spec	S. Vargas / I. Crosslay (T)	Air Tactical Group Supervisor			
6. Logistics Section		Helibase Manager		R. Johnson / L. Kalfsbeek (T)	
Chief	S. Dohman				
Deputy Chief	J. Warden	8. Finance/Administration Section:			
Supply Unit	P. Lee	Chief	G. Belk		
Facilities Unit	B.Luis/D. Zumkeller (T)	Deputy Chief	R. Browne		
Ground Support Unit	J. Luckenbach	Time Unit	J. Navarro		
Communications Unit	J. Brooks	Procurement Unit	J. Andrade		
Medical Unit	J. Segura / R. Beeson (T)	Comp/Claims Unit	B. Stirton		
Motel Unit	B. Brewer	Cost Unit	J. Tapia		
Prepared By: Name:	S. Sherwood	Position/Title:	PSC1	Signature:	
ICS 203		Date/Time:	8/25/2020 2300 hours		



SCU Lightning Complex Fire Weather Forecast



FORECAST NO: 8

NAME OF FIRE: SCU Lightning Complex

PREDICTION FOR: 0700 Wed-0700 Thurs

UNIT: CALFIRE Santa Clara

SHIFT DATE: Aug 26th-Aug 27th

SIGNED:

TIME AND DATE

Incident Meteorologist-Ryan Walbrun

FORECAST ISSUED: 2000 Aug 25th

WEATHER DISCUSSION: The marine layer depth will be around 2000 feet this morning with high humidity values to start the day as clouds cover the lower slopes. Fire weather conditions will remain mild for today's operational period with seasonable temperatures, higher than normal humidity and generally light winds. The marine layer will slowly mix out by mid-morning with moisture briefly creating humidity rises for the higher elevations as the burn-off occurs. General winds will remain from the West to Southwest, strongest for northern portions of the Calaveras Zone that feel the influence of winds off the Bay. Southwest Divisions of Calaveras Zone in Henry Coe Park such as Div T/O/N will see southwest winds during the afternoon that will become strong and gusty in Div M as they get pushed through Pacheco Pass along Hwy 152. **Continue to expect night time lowering of the humidity from around 2am-6am, especially above 2000 feet interior portions of the Calaveras and Canyon Zones which can lead to rapid increases in fire behavior during the pre-dawn hours from fuels burning out or burning operations.**

WEATHER FORECAST FOR WEDNESDAY:

WEATHER: Morning clouds below 2000 feet otherwise smoke and hazy sunshine.

TEMPERATURES: Highs 79-85 Calaveras Zone, coolest above 2000 feet.
Highs 86-90 interior sections of the Canyon Zone.

HUMIDITY: 28-38% Calaveras Zone, wettest below 2000 feet. 18-28% Canyon Zone.

20 FT WINDS:

- Ridgetop: Southwest 5-10 mph afternoon gusts 15-20 mph strongest Div Q/R and I.
- Slopes : Upslope/Upcanyon 3-8 mph late afternoon gusts 12 mph Canyon Zone drainages.
- Hwy 152: Expect strong and gusty west winds **in Div M** around **Pacheco Pass** and San Luis Reservoir. **Afternoon and evening westerly gusts 30 mph.**

STABILITY/INVERSION: Strong morning inversion breaking by midday Calaveras Zone then Canyon.

WEATHER FORECAST FOR WEDNESDAY NIGHT:

WEATHER: Smoke and haze otherwise mostly clear skies over the fire with clouds on the lower slopes.

TEMPERATURES: Lows 57-65 lower slopes of Calaveras Zone and 66-75 above 2000 feet.


HUMIDITY RECOVERY: 65-75% but locally 22-32% hills of the Canyon Fire above 2000 feet.

20 FT WINDS: Ridgetop: Southwest winds 5-10 mph evening gusts 15 mph.
Slopes : Downcanyon 2-5 mph.

STABILITY/INVERSION: Stable inversion layer setting up overnight.

Extended Forecast: Thursday through Saturday a seasonable weather pattern looks to set up. Highs lower 80s to lower 90s. Humidity 18-28% with good recovery on the lower slopes. Night time drying trends will likely continue across the Canyon Zone as the marine layer makes its way into the valleys. Winds westerly 5-10 mph gusts 15-20 mph afternoon hours. Warming and drying trend Sunday into next week.

FIRE BEHAVIOR FORECAST

FORECAST NUMBER: 9	TYPE OF FIRE: WILDFIRE
FIRE NAME: SCU LIGHTNING COMPLEX CASCU-005740	OPERATIONAL PERIOD: 8/26-8/27/20 0700-0700
DATE ISSUED: 8/25/20	TIME ISSUED: 2000
UNIT: SANTA CLARA	SIGNED:  Typed/printed: Stephen Volmer FBAN

INPUTS

WEATHER SUMMARY:

Seasonable weather will enter the area, and will last into next week. Daytime marine layer will begin lifting by noon. Expect low 80's on the western slopes of the Calaveras Zone, and high 80's on the interior and eastern portions of the Canyon Zone. Nighttime humidity will crash into the low teens between 2am and 6am in the areas above 1,500' elevation. Winds over the Canyon zone will be light and terrain driven, while the Calaveras Zone will experience gusty westerly winds.

OUTPUTS

FIRE BEHAVIOR

FUEL MODEL	RATE OF SPREAD FT/MIN	FLAME LENGTH FT	SPOTTING DISTANCE	PROBABILITY OF IGNITION
GRASS	71-114	7	.30 mi	87%
BRUSH	66-102	21	.60 mi	87%
OAK OVERSTORY	15-25	12	.40 mi	87%

GENERAL:

Fuels are currently at seasonal levels, and below the 90th percentile. Brush fields have a large amount of dead material in them from the previous years of drought and lack of fire history. Fuels above 1,500' elevation will burn extremely well in the early morning hours due to the humidity dropping each night. When fuels, wind, and topography are all in alignment you can expect dangerous rates of spread. The winds along Hwy 152 and HWY 580 can be very strong from the west and will eddy in the canyons and drainages found there.

*****Values above are valid for any new starts in the area*****

SPECIFIC:

- New ignitions will become established quickly in the dry fuels.
- Take the weather often throughout the shift to track the changing trends and conditions.
- Rolling material will continue to drop into the steep drainage creating slope reversal.

AIR OPERATIONS: Visibility will clear up by noon when the inversion lifts. Expect gusty conditions over the ridgetops in the afternoon. Transport winds W 10mph. Air resources might not be available for your tactical plans due to visibility, weather, new fires, or being timed out. Have a plan in place for air resources before they arrive to maximize their efforts.

Sunset 19:42 Sunrise 06:32

SAFETY

- The best safety zone is in clean burn. Locate safety zones early in the shift, and update them as your working location changes.
- Fire weakened timber and branches will release due to winds. Roadways will become blocked easily.
- Weather getting hotter and dryer. Watch for poor overnight humidity recovery.

SAFETY MESSAGE/PLAN (ICS 208)

1. Incident Name: SCU LIGHTNING COMPLEX	2. Operational Period:	Date From: 8/26/20	Date To: 8/27/20
		Time From: 0700	Time To: 0700

A secure felling area, MINIMUM OF TWO AND ONE HALF (2.5) TIMES THE HEIGHT OF THE MATERIAL BEING FELLED IN ALL DIRECTIONS, needs to be established and maintained by the faller during all tree felling operations. In addition, the entire downhill side on slopes must be secured if materials can fall/role for a long, unpredictable distance.

COVID-19: Remain diligent with masks, hygiene, and frequent hand washing; wipe down common surfaces on fire apparatus/vehicles.

SNAGS: Weakened trees are burning through and falling more frequently. Maintain your situational awareness and establish Lookouts Communications Escape routes Safety zones!

HYDRATION: Assure we all maintain nutrition and fluids before, during, and after work cycles; rest and seek shade or air-conditioned cab whenever possible.

FATIGUE: A factor to consider as the fire siege continues; keep members informed; acknowledge their accomplishment and hard-work, provide rest often while monitoring fire conditions.

HEADS UP: Keep informed weather conditions and how it will affect your work zone; forecast all operations and account for lag time on work rates. Utilize a Risk Matrix and establish Hazard Controls.

CONSIDER THE FOLLOWING FOR ALL DROPS: Personnel can be injured by the impact of material dropped by aircraft. Clear personnel out of the target area before the drop is conducted. If an individual is caught unaware in a drop zone.

Hold your hand tool away from your body.

Lie face down with hardhat in place and head toward the oncoming aircraft.

Grasp something firm to prevent being carried or rolled about by dropped liquid.

Do not run unless escape is ensured.

Get clear of dead snags and tops.

Be aware of rolling debris below the drop site in steep terrain.

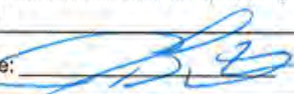
DROP INBOUND.....CLEAR THE LINE!!! CLEAR THE LINE!!! CLEAR THE LINE!!!

4. Site Safety Plan Required? No
 Approved Site Safety Plan(s) Located At:

5. Prepared By: J. Buchmeier / J. Novak (T) Position/Title: SOF1
 ICS 208 Date/Time: 8/25/2020 / 2030

Signature: 

INCIDENT ACTION PLAN SAFETY ANALYSIS (ICS 215A)

1. Incident Name: SCU LIGHTNING COMPLEX	2. Operational Period:	Date From: 8/26/20 Time From: 0700	Date To: 8/27/20 Time To: 0700
Incident Area	Hazard/Risks	Mitigations	
ALL	COMPLACENCY	Don't underestimate the task at hand. Wear full PPE while on the line. Don't get caught off guard. Have the right radio clone.	
ALL	COVID 19	Adhere to local, state, federal, and CDC health guidelines. Maintain social distancing when applicable. Wear a mask for yourself and others. Report any symptoms immediately to a supervisor.	
ALL	FIRE BEHAVIOR	Know your LCES and maintain Situational Awareness. Use experienced Look Outs. Follow the downhill line construction guidelines. Monitor weather for changes in the wind, temp, and RH during the shift. Have a contingency plan with established decision points and Safety Zones.	
ALL	FATIGUE/HEAT/DEHYDRATION	Be alert for signs of fatigue and take breaks as necessary on hot dry days. Monitor incoming resources for level of fatigue. Drink water before, during, and after shifts, up to 1.5 gal. per shift. Be alert for signs of heat stress in yourself and others; use the buddy system. Eat small meals often and when possible. Find shade when you can. Drink electrolyte drinks at a 2:1 water/sport drink ratio.	
ALL	STEEP TERRAIN/ROLLING DEBRIS	Watch your footing while hiking in steep terrain. Be careful of loose rolling debris. Maintain Situational Awareness.	
ALL	LINE CONSTRUCTION	Conduct thorough briefing for all personnel (inside rear IRPG). Ensure LCES in place prior to engagement. Establish adequate Safety Zones. Use Downhill Line Checklist. Follow "Look Up, Look Down, Look All Around" procedures. Utilize Risk Management Process...reference the IRPG.	
ALL	HAZARD TREES	Identify and isolate the area to provide for the safety of others. Flag and make proper notifications. Do not fall trees out of your certification level.	
ALL	DRIVING HAZARDS	SLOW DOWN! Long travel times to the line, stay alert. Drive defensively! Expect the unexpected around every curve. Drive with headlights and seatbelts on. Narrow roads with limited passing room. Coordinate your movements on one-lane roads, follow traffic plans.	
ALL	AIRCRAFT OPERATIONS	Monitor air-to-ground frequency, they are your eyes in the sky. Use air-to-ground frequency to communicate with aircraft. Use clear, concise statements when directing aircraft. Only utilize aircraft to insert personnel on the line when necessary. Ensure the line is clear when working with aircraft.	
ALL	PERFORM TAIL GATE SAFETY	Everyone should be briefed on the conditions and circumstances regarding the fire and their assignments per the IRPG.	
ALL	DOZER SAFETY	Watch for rolling material. Monitor safe working distances. Avoid working below dozer. Utilize communication with the operator (radio or hand signals).	
5. Prepared By: Joe Buchmeier		Position/Title: SOF1	
ICS 215A	Date/Time: 8/25/2020 / 2030	Signature: 	



CAL FIRE / INCIDENT MANAGEMENT TEAM 6

COVID-19 DAILY HEALTH CHECK SCREENING ALGORITHM



EACH WORKDAY WILL BEGIN WITH THE FOLLOWING:

Temperature recorded
Employee Screening Questionnaire

TEMPERATURE RECORDED

- Fever YES/NO? *Fever is considered > 100.4*
- EMPLOYEE SCREENING QUESTIONNAIRE
- Are you feeling ill/feverish?
 - Are you having chills?
 - Do you have new or worsening SOB?
 - Do you have a new or worsening cough?
 - Do you have a new or prolonged sore throat?

No Fever and No answered to all Employee Screening Questionnaire

Continue with Daily Operations

Yes Fever OR Yes answered to any of the Employee Screening Questionnaire

- Wash Hands, Don Mask and Isolate from other employees. Maintain a distance of > 6 feet.
- Notify the Company Officer and/or Strike Team Leader.
- Notify Medical Unit Leader
- Refer employee to appropriate healthcare provider for evaluation and treatment.
- Disinfect "High-touch" surface areas.

REMINDERS TO ALL EMPLOYEES

- ◇ Self-Monitor yourself while you are on and off the line. If you experience any flu-like symptoms, COVID-19 symptoms, or any Respiratory illness symptoms contact your Company Officer and or Strike Team Leader.
- ◇ Maintain proper hand hygiene. Wash hands with soap and water for 20 seconds. Utilize hand sanitizer often. Do not shake hands, touch, or hug others.
- ◇ Cover coughs or sneezes (if not masked). Cloth Masks should be exchanged and or washed daily.
- ◇ Masks are required when out in the public on non-emergency business.
- ◇ Disinfect high-touch surfaces daily.
- ◇ Practice social distancing (> 6 feet) at meal times, dormitories, in-person meeting, or while in public.



CAL FIRE / Incident Management Team 6

COVID-19 Response Algorithm



Employee Response Action Plan

COVID-19 Positive Test or COVID-19 Positive Clinical Symptoms Presentation

- COVID 19 Symptoms: Cough, SOB, Fever or afebrile, Chills, Muscle Pain, Sore throat, Loss of taste/smell
- Employee informs Company Officer and Strike Team Leader of presumed/confirmed COVID-19 symptoms.
- Employee advised to seek evaluation by Medical Unit and CAL MAT or base camp medical unit.
- Crew initiates cleaning measures. Mask, safety glasses, gloves worn. (If needed, LOGS will assist)
- Medical Unit to notified IC, Liaison, Safety and Logistics ASAP. Medical Unit will notify COVID-19 Public Health Officer and determine need for testing and locations.



Incident Action Plan

- Company Officer / Strike Team Leader notified of personnel with COVID-19 positive test or symptom.
- Medical Unit evaluates individual(s) and need for care and evaluation.
- IC, Liaison, Safety and Logistics notification made to determine course of incident evaluation and response.
- Line Chief, Agency Administrator, and Region Office updated upon notification



Facilities Response

- Medical and Safety notified
- Incident Notification
- Disinfection plan initiated.
- Resource Status Evaluated



Medical Evaluation & Contact Tracing

- Personnel interviewed by Medical Unit . List of Positive contacts made in the last 5 days acquired. All Exposed are required to wear surgical mask, self monitor for Fever/Resp symptoms for up to 14 days (exposed personnel are subject to COVID-19 testing)
- Home Unit / Department utilized and retrospective tracking of Positive COVID-19 personnel inter-actions are identified within the last 5 days.
- Home Unit / Department updated by Company Officer / Strike Team Leader.
- Public Health Department is contacted and updated by IC or Designated Representative.
- Positive COVID-19 Employees w/symptoms will need to be evaluated by Health Department conducting testing, prior to returning to assignment.
- Positive COVID-19 Employees w/o symptoms may be required to be evaluated and resource status will be reviewed prior to returning to assignment.

ASSIGNMENT LIST (ICS 204 WF)

CONTROLLED UNCLASSIFIED
INFORMATION//BASIC

1. Incident Name: SCU LIGHTNING COMPLEX <i>Canyon Zone</i>	2. Operational Period: Date From: 08/26/20 Date To: 08/27/20 Time From: 0700 Time To: 0700	3. Branch Division XV I Page 1 of 1 India
--	---	--


4. Operations Personnel:	
Operations Section Chief: S. Corn	Night Ops: J. McGough
Branch Director:	Branch Safety:
Division/Group Supervisor: D. Prevett / G. Laird (T)	Air Attack:

5. Resources Assigned:	** Resources Below in Bold are 12 Hour **							
Resource Identifier	ALS	LWD	Leader	Personnel	Request #	Hours	Reporting Location	
STC XTB 4229C*			A. Whisler	19	E-193	0700-0700	ICP	
DOZ PVT E-1			J. Worrell	2	E-1	0700-0700	ICP	
DOZ PVT E-212			T. Stevenson	2	E-212	0700-0700	ICP	
W/T PVT E-5			K. Merwin	2	E-5	0700-0700	ICP	
W/T PVT E-237			R. Webb	2	E-237	0700-0700	ICP	

6. Work Assignments:
 Construct and/ or improve Fire line.
 Tactical Patrol.
 Identify suppression repair needs.

7. Special Instructions:
 * STC XTB 4229C Identified for Region Response.

8. Communications							
Name	Ch	Function	Rx Freq	Rx Tone	Tx Freq	Tx Tone	Notes
NIFC C3	2	COMMAND	170.4250N	131.8 (T3)	168.0750N	131.8 (T3)	MT OSO LINKED W/CMD 10, 11, 38, & 40
VTAC14	8	TACTICAL	159.4725N	156.7 (T6)	159.4725N	156.7 (T6)	BRANCH XV
CDF T20	14	AIR TO GROUND	159.3750N	192.8 (T16)	159.3750N	192.8 (T16)	
CALCORD	15	MEDICAL	156.0750N	156.7 (T6)	156.0750N	156.7 (T6)	
GUARD 21	16	EMERGENCY	168.6250N		168.6250N	110.9 (T1)	AIR GUARD

9. Prepared by: Name: Jamie Heald RESL
 Signature: 
ICS 204 Date/Time: 8/25/2020 2200 Personnel Count: 27

ASSIGNMENT LIST (ICS 204 WF)

CONTROLLED UNCLASSIFIED
INFORMATION//BASIC

1. Incident Name:	2. Operational Period:	3. Branch	Division
SCU LIGHTNING COMPLEX <i>Canyon Zone</i>	Date From: 08/26/20 Date To: 08/27/20 Time From: 0700 Time To: 0700	XV	J
		Page 1 of 1	Juliet

4. Operations Personnel:	
Operations Section Chief: S. Corn	Night Ops: J. McGough
Branch Director:	Branch Safety:
Division/Group Supervisor:	Air Attack:

5. Resources Assigned:		** Resources Below in Bold are 12 Hour **					
Resource Identifier	ALS	LWD	Leader	Personnel	Request #	Hours	Reporting Location
ENG3 BEU 4665			M. Williams	4	E-354	0700-0700	ICP
W/T PVT E-7			D. Escobar	2	E-7	0700-0700	ICP

6. Work Assignments:
 Tactical Patrol.
 Backhaul all trash.
 Identify suppression repair needs.

7. Special Instructions:

8. Communications							
Name	Ch	Function	Rx Freq	Rx Tone	Tx Freq	Tx Tone	Notes
NIFC C3	2	COMMAND	170.4250N	131.8 (T3)	168.0750N	131.8 (T3)	MT OSO LINKED W/CMD 10, 11, 38, & 40
VTAC14	8	TACTICAL	159.4725N	156.7 (T6)	159.4725N	156.7 (T6)	BRANCH XV
CDF T20	14	AIR TO GROUND	159.3750N	192.8 (T16)	159.3750N	192.8 (T16)	
CALCORD	15	MEDICAL	156.0750N	156.7 (T6)	156.0750N	156.7 (T6)	
GUARD 21	16	EMERGENCY	168.6250N		168.6250N	110.9 (T1)	AIR GUARD

9. Prepared by: Name:	Jamie Heald	RESL	Signature:	
ICS 204	Date/Time: 8/25/2020	2200	Personnel Count: 6	

ASSIGNMENT LIST (ICS 204 WF)

CONTROLLED UNCLASSIFIED
INFORMATION//BASIC

1. Incident Name: SCU LIGHTNING COMPLEX <i>Canyon Zone</i>	2. Operational Period: Date From: 08/26/20 Date To: 08/27/20 Time From: 0700 Time To: 0700	3. Branch Division XV K / L
--	---	--


4. Operations Personnel:		Page 1 of 1
Operations Section Chief: S. Corn	Night Ops: J. McGough	
Branch Director:	Branch Safety:	
Division/Group Supervisor:	Air Attack:	

5. Resources Assigned:		** Resources Below in Bold are 12 Hour **					
Resource Identifier	ALS	LWD	Leader	Personnel	Request #	Hours	Reporting Location
STA OES 6820A			D. Pohl	21	E-271	0700-0700	ICP
W/T PVT E-6			B. Indiher	2	E-6	0700-1900	ICP

6. Work Assignments:
Tactical Patrol.
Backhaul all trash.
Identify suppression repair needs.

7. Special Instructions:
Some areas of the division may be better served by NIFC C10

8. Communications							
Name	Ch	Function	Rx Freq	Rx Tone	Tx Freq	Tx Tone	Notes
NIFC C3	2	COMMAND	170.4250N	131.8 (T3)	168.0750N	131.8 (T3)	MT OSO LINKED W/CMD 10, 11, 38, & 40
VFIRE 23	9	TACTICAL	154.2950N	156.7 (T6)	154.2950N	156.7 (T6)	BRANCH XV
CDF T20	14	AIR TO GROUND	159.3750N	192.8 (T16)	159.3750N	192.8 (T16)	
CALCORD	15	MEDICAL	156.0750N	156.7 (T6)	156.0750N	156.7 (T6)	
GUARD 21	16	EMERGENCY	168.6250N		168.6250N	110.9 (T1)	AIR GUARD

9. Prepared by: Name: Jamie Heald RESL Signature: 
ICS 204 Date/Time: 8/25/2020 2200 Personnel Count: 23

ASSIGNMENT LIST (ICS 204 WF)

CONTROLLED UNCLASSIFIED
INFORMATION//BASIC

1. Incident Name:	2. Operational Period:	3. Branch	Division
SCU LIGHTNING COMPLEX <i>Canyon Zone</i>	Date From: 08/26/20 Date To: 08/27/20 Time From: 0700 Time To: 0700	XV	M

4. Operations Personnel:		Page 1 of 1	Mike
Operations Section Chief: S. Corn		Night Ops: J. McGough	
Branch Director:		Branch Safety:	
Division/Group Supervisor: M. Boyce		Air Attack:	

5. Resources Assigned:		** Resources Below in Bold are 12 Hour **					
Resource Identifier	ALS	LWD	Leader	Personnel	Request #	Hours	Reporting Location
STC LNU 9140C			R. Lawler	21	E-12	0700-0700	Gilroy Camp
STC XBO 6220C			M. Gerken	20	E-476	0700-0700	Gilroy Camp
DOZ SCU 1644			S. Mcvay	4	E-350	0700-0700	Gilroy Camp
DOZ PVT E-216			S. Maynard	2	E-216	0700-0700	Gilroy Camp
DOZ PVT E-219			B. Hendrix	2	E-219	0700-0700	Gilroy Camp
GRD PVT E-462			R. Mustin	1	E-462	0700-0700	Gilroy Camp
W/T SCC 68			M. Gil	2	E-128	0700-0700	Gilroy Camp
W/T PVT E-224			N. Kusalich	2	E-224	0700-0700	Gilroy Camp
W/T PVT E-240			M. Sanchez	1	E-240	0700-1900	Gilroy Camp
W/T PVT E-241			A. Harris	2	E-241	0700-0700	Gilroy Camp
W/T PVT E-242			J. Zulu	2	E-242	0700-0700	Gilroy Camp
W/T PVT E-243			J. Mgary	2	E-243	0700-0700	Gilroy Camp
W/T PVT E-253			M. Beaver	2	E-253	0700-0700	Gilroy Camp
FEMP MASSEY			B. Massey	1	O-187	0700-0700	Gilroy Camp
FEMP SMITH	X		J. Smith	1	O-256	0700-0700	Gilroy Camp

6. Work Assignments:
Construct and/ or improve Fire line.

7. Special Instructions:
All resources on Division M to report to Gilroy Camp for logistics support with the exception of the STG Strike Teams.

8. Communications							
Name	Ch	Function	Rx Freq	Rx Tone	Tx Freq	Tx Tone	Notes
NIFC C10	3	COMMAND	170.4125N	131.8 (T3)	165.9625N	131.8 (T3)	MT PACHECO LINKED W/CMD 3, 11, 38, & 40
VFIRE 24	10	TACTICAL	154.2725N	156.7 (T6)	154.2725N	156.7 (T6)	BRANCH XV
CDF T20	14	AIR TO GROUND	159.3750N	192.8 (T16)	159.3750N	192.8 (T16)	
CALCORD	15	MEDICAL	156.0750N	156.7 (T6)	156.0750N	156.7 (T6)	
GUARD 21	16	EMERGENCY	168.6250N		168.6250N	110.9 (T1)	AIR GUARD

9. Prepared by: Name: Jamie Heald RESL Signature:
ICS 204 Date/Time: 8/25/2020 2200 Personnel Count: 65

ASSIGNMENT LIST (ICS 204 WF)

CONTROLLED UNCLASSIFIED
INFORMATION//BASIC

1. Incident Name:	2. Operational Period:	3. Branch	Division
SCU LIGHTNING COMPLEX <i>Canyon Zone</i>	Date From: 08/26/20 Date To: 08/27/20 Time From: 0700 Time To: 0700	XV	N
		Page 1 of 1	November

4. Operations Personnel:	
Operations Section Chief: S. Corn Branch Director:	Night Ops: J. McGough
Division/Group Supervisor: K. Stewart (T)	Branch Safety:
	Air Attack:

5. Resources Assigned:							
** Resources Below in Bold are 12 Hour **							
Resource Identifier	ALS	LWD	Leader	Personnel	Request #	Hours	Reporting Location
STC BTU 9211C			J. Morris	17	E-362	0700-0700	Gilroy Camp
STC OESH TX-1			R. Mack	22	E-451	0700-0700	Gilroy Camp
T/F XAL 2009			T. Baker	22	E-411	0700-0700	Gilroy Camp
DOZ NEU 2341			M. Bellows	4	E-401	0700-0700	Gilroy Camp
DOZ PVT E-221			T. Funes	2	E-221	0700-0700	Gilroy Camp
DOZ PVT E-392			B. Shannon	2	E-392	0700-0700	Gilroy Camp
DOZ PVT E-400			G. Grewer	1	E-400	0700-1900	Gilroy Camp
W/T XAL 6			G. Dunbar	2	E-335	0700-0700	Gilroy Camp
W/T PVT E-232			N. Aguilar	2	E-232	0700-0700	Gilroy Camp
W/T PVT E-233			R. Hurl	2	E-233	0700-0700	Gilroy Camp
W/T PVT E-239			P. Yokoyama	2	E-239	0700-0700	Gilroy Camp
W/T PVT E-248			V. Reali	2	E-248	0700-0700	Gilroy Camp
HEQB NELSON			J. Nelson	1	O-430	0700-0700	Gilroy Camp
HEQB WALCZAK (T)			S. Walczak	1	O-403	0700-0700	Gilroy Camp

6. Work Assignments:
Construct and/ or improve Fire line.

7. Special Instructions:
Some areas of the division may be better served by NIFC C38 or NIFC C10
All resources on Division N to report to Gilroy Camp for logistics support with the exception of the STG Strike Teams.

8. Communications							
Name	Ch	Function	Rx Freq	Rx Tone	Tx Freq	Tx Tone	Notes
NIFC C40	6	COMMAND	173.7500N	131.8 (T3)	163.8250N	131.8 (T3)	COPERNICUS PK LINKED WCMD 3, 10, 11, & 38
VFIRE 24	10	TACTICAL	154.2725N	156.7 (T6)	154.2725N	156.7 (T6)	BRANCH XV
CDF T20	14	AIR TO GROUND	159.3750N	192.8 (T16)	159.3750N	192.8 (T16)	
CALCORD	15	MEDICAL	156.0750N	156.7 (T6)	156.0750N	156.7 (T6)	
GUARD 21	16	EMERGENCY	168.6250N		168.6250N	110.9 (T1)	AIR GUARD

9. Prepared by: Name:	Jamie Heald	RESL	Signature:
ICS 204	Date/Time: 8/25/2020	2200	Personnel Count: 82

ASSIGNMENT LIST (ICS 204 WF)

CONTROLLED UNCLASSIFIED
INFORMATION//BASIC

1. Incident Name:	2. Operational Period:	3. Branch	Division
SCU LIGHTNING COMPLEX <i>Canyon Zone</i>	Date From: 08/26/20 Date To: 08/27/20 Time From: 0700 Time To: 0700	XV	Contingency
4. Operations Personnel:		Page 1 of 1	


Operations Section Chief: S. Corn	Night Ops: J. McGough
Branch Director:	Branch Safety:
Division/Group Supervisor: M. Milojevich (12)	Air Attack:

5. Resources Assigned:	** Resources Below in Bold are 12 Hour **							
Resource Identifier	ALS	LWD	Leader	Personnel	Request #	Hours	Reporting Location	
T/F PVT THUNDER BOLT			S. Gonzales	16	E-363	0700-1900	ICP	
STL BEU 9467L			N. Milton	3	E-446	0700-0700	ICP	
DOZ SCU 1641			J. Logan	4	E-351	0700-0700	ICP	
DOZ PVT E-210			A. Bushey	2	E-210	0700-0700	ICP	
DOZ PVT E-211			J. Ontano	2	E-211	0700-0700	ICP	
DOZ PVT E-217			R. Dudbah	2	E-217	0700-0700	ICP	
DOZ PVT E-218			J. Wyatt	2	E-218	0700-0700	ICP	
DOZ PVT E-395			J. Willburn	2	E-395	0700-0700	ICP	
DOZ PVT E-396			S. Mahood	1	E-396	0700-1900	ICP	
DOZ PVT E-400			G. Grewer	1	E-400	0700-1900	ICP	

6. Work Assignments:
Assess need for contingency lines.

7. Special Instructions:

8. Communications							
Name	Ch	Function	Rx Freq	Rx Tone	Tx Freq	Tx Tone	Notes
NIFC C3	2	COMMAND	170.4250N	131.8 (T3)	168.0750N	131.8 (T3)	MT OSO LINKED W/CMD 10, 11, 38, & 40
CDF T30	12	TACTICAL	151.3925N	192.8 (T16)	151.3925N	192.8 (T16)	
CDF T20	14	AIR TO GROUND	159.3750N	192.8 (T16)	159.3750N	192.8 (T16)	
CALCORD	15	MEDICAL	156.0750N	156.7 (T6)	156.0750N	156.7 (T6)	
GUARD 21	16	EMERGENCY	168.6250N		168.6250N	110.9 (T1)	AIR GUARD

9. Prepared by: Name: Jamie Heald RESL Signature: 

ICS 204 Date/Time: 8/25/2020 2200 Personnel Count: 35

ASSIGNMENT LIST (ICS 204 WF)

CONTROLLED UNCLASSIFIED
INFORMATION//BASIC

1. Incident Name: SCU LIGHTNING COMPLEX <i>Calaveras Zone</i>	2. Operational Period: Date From: 08/26/20 Date To: 08/27/20 Time From: 0700 Time To: 0700	3. Branch XXI / XXIII XXIV Page 1 of 1
---	---	---


4. Operations Personnel: Operations Section Chief: S. Corn Branch Director: Division/Group Supervisor:	Night Ops: J. McGough Branch Safety: Air Attack:
---	---

5. Resources Assigned:		** Resources Below in Bold are 12 Hour **					Hours	Reporting Location
Resource Identifier	ALS	LWD	Leader	Personnel	Request #			
STA XLG 1361A			K. Milikan	22	E-409	0700-1900	ICP	

6. Work Assignments:
Tactical Patrol.
Backhaul all trash.


7. Special Instructions:

8. Communications							
Name	Ch	Function	Rx Freq	Rx Tone	Tx Freq	Tx Tone	Notes
NIFC C11	4	COMMAND	170.6875N	131.8 (T3)	166.5750N	131.8 (T3)	MT ALLISON LINKED W/CMD 3, 10, 38 & 40
VTAC11	8	TACTICAL	151.1375N	156.7 (T6)	151.1375N	156.7 (T6)	CALAVERAS ZONE
CDF T20	14	AIR TO GROUND	159.3750N	192.8 (T16)	159.3750N	192.8 (T16)	
CALCORD	15	MEDICAL	156.0750N	156.7 (T6)	156.0750N	156.7 (T6)	
GUARD 21	16	EMERGENCY	168.6250N		168.6250N	110.9 (T1)	AIR GUARD

9. Prepared by: Name: Jamie Heald RESL Signature: 
ICS 204 Date/Time: 8/25/2020 2200 Personnel Count: 22

ASSIGNMENT LIST (ICS 204 WF)

CONTROLLED UNCLASSIFIED
INFORMATION/BASIC

1. Incident Name:		2. Operational Period:				3. Branch		Division	
SCU LIGHTNING COMPLEX <i>Calaveras Zone</i>		Date From: 08/26/20	Date To: 08/27/20	Time From: 0700	Time To: 0700	XXV		O	
4. Operations Personnel:						Page 1 of 2		Oscar	
Operations Section Chief: S. Corn				Night Ops: J. McGough					
Branch Director: M. Martinez (12)				Branch Safety:					
Division/Group Supervisor: K. Mapes				Air Attack:					
5. Resources Assigned:		** Resources Below in Bold are 12 Hour **							
Resource Identifier	ALS	LWD	Leader	Personnel	Request #	Hours	Reporting Location		
STA LFD 1002A			M. Castillo	23	E-410	0700-0700	DP 53		
STA OES 5805A			J. Deamkico	21	E-280	0700-0700	DP 53		
STA OES 1843A			C. Fabrizio	22	E-273	0700-0700	DP 53		
STA XBO 6210A			J. Ault	22	E-284	0700-0700	DP 53		
STC SCU 9162C			B. Goff	18	E-171	0700-0700	DP 53		
STH SHF 9240G			B. Redding	29	C-29	0700-0700	DP 53		
STG LMU 9224G			R. Veverka	34	C-31	0700-0700	DP 53		
CRW T2 C-23			K. Morse	20	C-23	0700-1900	DP 53		
CRW T2 C-26			M. Spence	20	C-26	0700-1900	DP 53		
DOZ MRN 1540			J. Terstegge	4	E-14	0700-0700	DP 53		
DOZ SHU 2440			C. Rauch	1	E-367	0700-0700	DP 53		
DOZ SHU 2444			K. Ensley	3	E-368	0700-0700	DP 53		
DOZ PVT E-213			A. Daniels	2	E-213	0700-0700	DP 53		
DOZ PVT E-215			L. Arias	3	E-215	0700-0700	DP 53		
DOZ PVT E-222			S. Mahood	2	E-222	0700-0700	DP 53		
DOZ PVT E-223			L. Gill	2	E-223	0700-0700	DP 53		
GRD PVT E-459			K. Pereira	2	E-459	0700-1900	DP 53		
W/T PVT E-235			J. Epperson	2	E-235	0700-0700	DP 53		
6. Work Assignments:									
Construct and/ or improve Fire line. Assess need for contingency lines.									
7. Special Instructions:									
All resources on Division O to report to Gilroy Camp for logistics support with the exception of the STG Strike Teams.									
8. Communications									
Name	Ch	Function	Rx Freq	Rx Tone	Tx Freq	Tx Tone	Notes		
NIFC C40	6	COMMAND	173.7500N	131.8 (T3)	163.8250N	131.8 (T3)	COPERNICUS PK LINKED W/CMD 3, 10, 11, & 38		
CDF T30	13	TACTICAL	151.3925N	192.8 (T16)	151.3925N	192.8 (T16)	CALAVERAS ZONE BR XXV		
CDF T20	14	AIR TO GROUND	159.3750N	192.8 (T16)	159.3750N	192.8 (T16)			
CALCORD	15	MEDICAL	156.0750N	156.7 (T6)	156.0750N	156.7 (T6)			
GUARD 21	16	EMERGENCY	168.6250N		168.6250N	110.9 (T1)	AIR GUARD		
9. Prepared by: Name:		Jamie Heald			RESL		Signature: 		
ICS 204	Date/Time: 8/25/2020		2200		Personnel Count: 230				

ASSIGNMENT LIST (ICS 204 WF)

CONTROLLED UNCLASSIFIED
INFORMATION//BASIC

1. Incident Name: SCU LIGHTNING COMPLEX <i>Calaveras Zone</i>	2. Operational Period: Date From: 08/26/20 Date To: 08/27/20 Time From: 0700 Time To: 0700	3. Branch Division XXV T Page 1 of 1 Tango
---	---	--

4. Operations Personnel:	
Operations Section Chief: S. Corn Branch Director: M. Martinez (12) Division/Group Supervisor: R. Sonsteng	Night Ops: J. McGough Branch Safety: Air Attack:

5. Resources Assigned:	** Resources Below in Bold are 12 Hour **						
Resource Identifier	ALS	LWD	Leader	Personnel	Request #	Hours	Reporting Location
STC NEU 9232C			D. Nelson	18	E-11	0700-0700	DP 46
STC XAL 2005C			J. Bowron	22	E-349	0700-0700	DP 46
DOZ LNU 1445			C. Boschi	3	E-453	0700-0700	DP 46
DOZ LNU 1449			B. Pots	3	E-366	0700-0700	DP 46
W/T PVT E-228			T. Kelly	2	E-228	0700-0700	DP 46
W/T PVT E-236			R. Santana	2	E-236	0700-0700	DP 46
W/T PVT E-244			C. Skinner	1	E-244	0700-1900	DP 46
W/T PVT E-251			S. Fourby	1	E-251	0700-1900	DP 46

6. Work Assignments:
Construct and/ or improve Fire line.
Assess need for contingency lines.

7. Special Instructions:

8. Communications							
Name	Ch	Function	Rx Freq	Rx Tone	Tx Freq	Tx Tone	Notes
NIFC C40	6	COMMAND	173.7500N	131.8 (T3)	163.8250N	131.8 (T3)	COPERNICUS PK LINKED W/CMD 3, 10, 11, & 38
VTAC13	11	TACTICAL	158.7375N	156.7 (T6)	158.7375N	156.7 (T6)	CALAVERAS ZONE BR XXV
CDF T20	14	AIR TO GROUND	159.3750N	192.8 (T16)	159.3750N	192.8 (T16)	
CALCORD	15	MEDICAL	156.0750N	156.7 (T6)	156.0750N	156.7 (T6)	
GUARD 21	16	EMERGENCY	168.6250N		168.6250N	110.9 (T1)	AIR GUARD

9. Prepared by: Name:	Jamie Heald	RESL	Signature:
ICS 204	Date/Time: 8/25/2020	2200	Personnel Count: 52

ASSIGNMENT LIST (ICS 204 WF)

CONTROLLED UNCLASSIFIED
INFORMATION//BASIC

1. Incident Name: SCU LIGHTNING COMPLEX <i>Calaveras Zone</i>	2. Operational Period: Date From: 08/26/20 Date To: 08/27/20 Time From: 0700 Time To: 0700	3. Branch Division XXV V Page 1 of 1 Victor
---	---	--


4. Operations Personnel:	
Operations Section Chief: S. Corn	Night Ops: J. McGough
Branch Director: M. Martinez (12)	Branch Safety:
Division/Group Supervisor: Z. Main (T) (12)	Air Attack:

5. Resources Assigned:		** Resources Below in Bold are 12 Hour **					
Resource Identifier	ALS	LWD	Leader	Personnel	Request #	Hours	Reporting Location
ENG3 CZU 1791			R. Herrera	3	E-347	0700-0700	ICP
CRW T2 C-12			C. Pacheco	20	C-12	0700-1900	ICP

6. Work Assignments:
Construct and/ or improve Fire line.
Assess need for contingency lines.

7. Special Instructions:

8. Communications							
Name	Ch	Function	Rx Freq	Rx Tone	Tx Freq	Tx Tone	Notes
NIFC C11	4	COMMAND	170.6875N	131.8 (T3)	166.5750N	131.8 (T3)	MT ALLISON LINKED W/CMD 3, 10, 38 & 40
VTAC14	12	TACTICAL	159.4725N	156.7 (T6)	159.4725N	156.7 (T6)	CALAVERAS ZONE BR XXV/
CDF T20	14	AIR TO GROUND	159.3750N	192.8 (T16)	159.3750N	192.8 (T16)	
CALCORD	15	MEDICAL	156.0750N	156.7 (T6)	156.0750N	156.7 (T6)	
GUARD 21	16	EMERGENCY	168.6250N		168.6250N	110.9 (T1)	AIR GUARD

9. Prepared by: Name:	Jamie Heald	RESL	Signature: 
ICS 204	Date/Time: 8/25/2020	2200	Personnel Count: 23

ASSIGNMENT LIST (ICS 204 WF)

CONTROLLED UNCLASSIFIED
INFORMATION//BASIC

1. Incident Name:	2. Operational Period:	3. Branch	Division
SCU LIGHTNING COMPLEX <i>Calaveras Zone</i>	Date From: 08/26/20 Date To: 08/27/20 Time From: 0700 Time To: 0700	XXVI	Q


4. Operations Personnel:		Page 1 of 2	Quebec
Operations Section Chief: S. Corn	Night Ops: J. McGough		
Branch Director: D. Esades (12)	Branch Safety:		
Division/Group Supervisor: B. Wilson (T)	Air Attack:		

5. Resources Assigned:		** Resources Below in Bold are 12 Hour **					
Resource Identifier	ALS	LWD	Leader	Personnel	Request #	Hours	Reporting Location
STA OES 6800A			E. Hauser	20	E-283	0700-0700	ICP
STA OES 5806A			R. Roberts	20	E-282	0700-1900	ICP
STC BTU 9210C			M. Kennefic	17	E-364	0700-0700	ICP
STC OESH TX-2			S. Campbell	22	E-452	0700-0700	ICP
T/F SKU 1			M. Whipple	23	E-402	0700-0700	ICP
STH SCU 9163H			M. Lane	17	C-85	0700-0700	ICP
STH HUU 9126H			B. Vonglakhone	34	C-28	0700-0700	ICP
CRW T-2 C-17			C. Hubbard	20	C-17	0700-1900	ICP
STL HUU 9128L			T. Meyers	9	E-365	0700-0700	ICP
STL TGU 9250L			L. Thomas	7	E-54	0700-0700	ICP
DOZ BTU 2142			T. Adams	2	E-57	0700-0700	ICP
DOZ CON 221			C. Freyler	4	E-293	0700-0700	ICP
DOZ NEU 2346			D. Miner	3	E-4	0700-0700	ICP
DOZ SBC 22			J. Moniot	4	E-489	0700-0700	ICP
DOZ SKU 2643			L. Tupman	1	E-55	0700-1900	ICP
DOZ LNU 1442			N. Derickson	3	E-3	0700-0700	ICP
DOZ PVT E-220			B. Dunn	2	E-220	0700-0700	ICP
DOZ PVT E-393			C. Graham	2	E-393	0700-0700	ICP

6. Work Assignments:
Construct and/ or improve Fire line.
Assess need for contingency lines.

7. Special Instructions:

8. Communications							
Name	Ch	Function	Rx Freq	Rx Tone	Tx Freq	Tx Tone	Notes
NIFC C11	4	COMMAND	170.6875N	131.8 (T3)	166.5750N	131.8 (T3)	MT ALLISON LINKED W/CMD 3, 10, 38 & 40
VTAC12	10	TACTICAL	154.4525N	156.7 (T6)	154.4525N	156.7 (T6)	CALAVERAS ZONE BR XXVI
CDF T20	14	AIR TO GROUND	159.3750N	192.8 (T16)	159.3750N	192.8 (T16)	
CALCORD	15	MEDICAL	156.0750N	156.7 (T6)	156.0750N	156.7 (T6)	
GUARD 21	16	EMERGENCY	168.6250N		168.6250N	110.9 (T1)	AIR GUARD

9. Prepared by: Name: Jamie Heald RESL Signature: 

ICS 204 Date/Time: 8/25/2020 2200 Personnel Count: 210

ASSIGNMENT LIST (ICS 204 WF)

CONTROLLED UNCLASSIFIED
INFORMATION//BASIC

1. Incident Name:	2. Operational Period:	3. Branch	Division
SCU LIGHTNING COMPLEX <i>Calaveras Zone</i>	Date From: 08/26/20 Date To: 08/27/20 Time From: 0700 Time To: 0700	XXVI	Q

Page 2 of 2 Quebec


4. Operations Personnel:			
Operations Section Chief: S. Corn	Night Ops: J. McGough		
Branch Director: D. Esades (12)	Branch Safety:		
Division/Group Supervisor: B. Wilson (T)	Air Attack:		

5. Resources Assigned:	** Resources Below in Bold are 12 Hour **						
Resource Identifier	ALS	LWD	Leader	Personnel	Request #	Hours	Reporting Location
DOZ PVT E-394			T. Waterman	2	E-394	0700-0700	ICP
W/T PVT E-238			T. Waltjen	2	E-238	0700-0700	ICP
W/T PVT E-250			R. Anderson	1	E-250	0700-1900	ICP
W/T PVT E-229			D. Wood	1	E-229	0700-1900	ICP
W/T PVT E-230			D. Hughes	2	E-230	0700-0700	ICP
FALM O-370			B. Toth	1	O-370	0700-1900	ICP
FALM O-371			T. Davant	1	O-371	0700-1900	ICP
FEMP PAYNE			D. Payne	1	O-405	0700-0700	ICP
FEMP BLANDFORD			S. Blandford	1	O-406	0700-0700	ICP

6. Work Assignments:
Construct and/ or improve Fire line.
Assess need for contingency lines.

7. Special Instructions:

8. Communications							
Name	Ch	Function	Rx Freq	Rx Tone	Tx Freq	Tx Tone	Notes
NIFC C11	4	COMMAND	170.6875N	131.8 (T3)	166.5750N	131.8 (T3)	MT ALLISON LINKED W/CMD 3, 10, 38 & 40
VTAC12	10	TACTICAL	154.4525N	156.7 (T6)	154.4525N	156.7 (T6)	CALAVERAS ZONE BR XXVI
CDF T20	14	AIR TO GROUND	159.3750N	192.8 (T16)	159.3750N	192.8 (T16)	
CALCORD	15	MEDICAL	156.0750N	156.7 (T6)	156.0750N	156.7 (T6)	
GUARD 21	16	EMERGENCY	168.6250N		168.6250N	110.9 (T1)	AIR GUARD

9. Prepared by: Name: Jamie Heald RESL Signature: 

ICS 204 Date/Time: 8/25/2020 2200 Personnel Count: 12

ASSIGNMENT LIST (ICS 204 WF)

CONTROLLED UNCLASSIFIED
INFORMATION//BASIC

1. Incident Name:	2. Operational Period:	3. Branch	Division
SCU LIGHTNING COMPLEX <i>Calaveras Zone</i>	Date From: 08/26/20 Date To: 08/27/20 Time From: 0700 Time To: 0700	XXVI	R
		Page 1 of 1	Romeo


4. Operations Personnel:	
Operations Section Chief: S. Corn	Night Ops: J. McGough
Branch Director: D. Esades (12)	Branch Safety:
Division/Group Supervisor: B. Todeschini / J. Renner (T)	Air Attack:

5. Resources Assigned:		** Resources Below in Bold are 12 Hour **					
Resource Identifier	ALS	LWD	Leader	Personnel	Request #	Hours	Reporting Location
STC XCC 2029C	X		L. Goetsch	18	E-268	0700-0700	ICP
STC XSO 2350C	X		G. Mahlberg	21	E-450	0700-0700	ICP
STG HUU 9122G			G. Lindemann	30	C-27	0700-0700	ICP
CRW T2 C-25			T. Jensen	20	C-25	0700-1900	ICP
STL TUU 9417L			N. Perricelli	9	E-502	0700-0700	ICP
DOZ XAL CO17			M. Adams	2	E-372	0700-0700	ICP
DOZ PVT E-214			B. Welch	2	E-214	0700-0700	ICP
W/T PVT E-227			M. Lemus	2	E-227	0700-0700	ICP
W/T PVT E-231			J. Thoene	2	E-231	0700-0700	ICP

6. Work Assignments:
Construct and/ or improve Fire line.
Assess need for contingency lines.

7. Special Instructions:

8. Communications							
Name	Ch	Function	Rx Freq	Rx Tone	Tx Freq	Tx Tone	Notes
NIFC C40	6	COMMAND	173.7500N	131.8 (T3)	163.8250N	131.8 (T3)	COPERNICUS PK LINKED W/CMD 3, 10, 11, & 38
CDF T29	9	TACTICAL	151.3475N	192.8 (T16)	151.3475N	192.8 (T16)	CALAVERAS ZONE BR XXVI
CDF T20	14	AIR TO GROUND	159.3750N	192.8 (T16)	159.3750N	192.8 (T16)	
CALCORD	15	MEDICAL	156.0750N	156.7 (T6)	156.0750N	156.7 (T6)	
GUARD 21	16	EMERGENCY	168.6250N		168.6250N	110.9 (T1)	AIR GUARD

9. Prepared by: Name: Jamie Heald RESL Signature: 

ICS 204 Date/Time: 8/25/2020 2200 Personnel Count: 106

ASSIGNMENT LIST (ICS 204 WF)

CONTROLLED UNCLASSIFIED
INFORMATION//BASIC

1. Incident Name:	2. Operational Period:	3. Branch	Division
SCU LIGHTNING COMPLEX	Date From: 08/26/20 Date To: 08/27/20 Time From: 0700 Time To: 0700		Suppression Repair

Page 1 of 1

4. Operations Personnel:		Night Ops: J. McGough
Operations Section Chief: S. Corn	Branch Director:	Branch Safety:
Division/Group Supervisor: E. Orre		Air Attack:

5. Resources Assigned:		** Resources Below in Bold are 12 Hour **					
Resource Identifier	ALS	LWD	Leader	Personnel	Request #	Hours	Reporting Location
MAS PVT E-456			S. Evans	1	E-456	0700-1900	Reporting Location
MAS PVT E-457			R. Borst	1	E-457	0700-1900	Reporting Location
GRD PVT E-423			E. Butts	1	E-423	0700-1900	Reporting Location
CHIP PVT E-480			J. Powell	3	E-480	0700-1900	Reporting Location
CHIP PVT E-481			L. Owen	2	E-481	0700-1900	Reporting Location
CHIP PVT E-500			C. Wallace	2	E-500	0700-1900	Reporting Location
EXC PVT E-454			S. Clark	1	E-454	0700-1900	Reporting Location
EXC PVT E-455			S. Forde	1	E-455	0700-1900	Reporting Location
EXC PVT E-458			A. Fratarcangeli	1	E-458	0700-1900	Reporting Location
EXC PVT E-479			J. Graham	1	E-479	0700-1900	Reporting Location
EXC PVT E-501			R. Dickey	1	E-501	0700-1900	Reporting Location

6. Work Assignments:
Identify suppression repair needs.

7. Special Instructions:
NIFC C40 may need to be utilized in division R. Utilize assigned tacticals for the division operating in.

8. Communications							
Name	Ch	Function	Rx Freq	Rx Tone	Tx Freq	Tx Tone	Notes
NIFC C11	4	COMMAND	170.6875N	131.8 (T3)	166.5750N	131.8 (T3)	MT ALLISON LINKED W/CMD 3, 10, 38 & 40
CDF T20	14	AIR TO GROUND	159.3750N	192.8 (T16)	159.3750N	192.8 (T16)	
CALCORD	15	MEDICAL	156.0750N	156.7 (T6)	156.0750N	156.7 (T6)	
GUARD 21	16	EMERGENCY	168.6250N		168.6250N	110.9 (T1)	AIR GUARD

9. Prepared by: Name: Jamie Heald RESL Signature:

ICS 204 Date/Time: 8/25/2020 2200 Personnel Count: 15

AIR OPERATIONS SUMMARY ICS-220

Incident Name / Number SCU LIGHTNING COMPLEX / CA-SCU-005740	Sunrise 6:33	Startup 7:03	Cutoff 19:14	Sunset 19:44	Date Prepared Monday, August 24, 2020	Prepared By B. Kremensky																																																																		
General Remarks, Safety Notes, Hazards, Air Operations Special Equipment, etc. TRACK ALL DIPSITE LOCATIONS / NUMBER OF DIPS / GALLONS TAKEN. TRACK ALL DROP LOCATIONS / NUMBER OF DROPS / GALLONS DROPPED ALL GPS DATA TO BE COLLECTED IN DEGREES.MINUTES.DECIMAL MINUTES FORMAT. AVOID Aerial Application of Retardant / Foam / Agent within 300' of Waterways, Bodies of Water, etc. If Retardant / Foam / Agent is Dropped Within These Areas Immediately Notify the AOB and Provide the Following Information: Lat / Long, Estimated Number of Gallons and a Map Detailing The Area. Sunol MRB Latitude 37 34.99 Longitude 121 41.614 Red MRB Latitude 37 20.09 Longitude 121 49.27					Operational Period - Time Wednesday August 26, 2020 0700-2100																																																																			
Time Prepared 1400 Shutdown 20:14					Rescue Ship Information <table border="0" style="width: 100%; font-size: small;"> <tr> <td>Request #</td><td>A-138</td> </tr> <tr> <td>Polygon:</td><td>NM</td> </tr> <tr> <td>Altitude:</td><td>7,000 MSL</td> </tr> <tr> <td>Centerpoint:</td><td>37 37.56N Lat 121 48.23 Long</td> </tr> <tr> <td>NOTAMS:</td><td>0/6721</td> </tr> <tr> <td>Frequency</td><td>133.0250</td> </tr> </table> Request Procedure for These Aircraft: Incident Communications See Medical Plan For Additional Info http://tr.faa.gov/trr2/jst.html		Request #	A-138	Polygon:	NM	Altitude:	7,000 MSL	Centerpoint:	37 37.56N Lat 121 48.23 Long	NOTAMS:	0/6721	Frequency	133.0250																																																						
Request #	A-138																																																																							
Polygon:	NM																																																																							
Altitude:	7,000 MSL																																																																							
Centerpoint:	37 37.56N Lat 121 48.23 Long																																																																							
NOTAMS:	0/6721																																																																							
Frequency	133.0250																																																																							
Helibase Information Name Meadowlark Latitude 37 39.679 Longitude 121 41.614 Name Latitude Longitude (use page 2 if needed)					TFR Information Request # A-138 Name G841 Phone (630)708-2718 Make/Model UH-60 Location Meadowlark UH-60 Meadowlark																																																																			
Frequencies <table border="0" style="width: 100%; font-size: small;"> <tr> <th>COMMAND</th> <th>TX</th> <th>Tone</th> <th>RX</th> <th>Tone</th> <th>AM / FM</th> </tr> <tr> <td>COMMAND</td> <td>163.8250N</td> <td>131.8000</td> <td>173.7500N</td> <td>131.8000</td> <td>FM</td> </tr> <tr> <td>AIR / GROUND TACTICAL</td> <td>159.3750</td> <td>192.8000</td> <td>159.3750</td> <td>192.8000</td> <td>FM</td> </tr> <tr> <td>AIR/AIR ROTARY WING</td> <td>133.0250</td> <td></td> <td>133.0250</td> <td></td> <td>AM</td> </tr> <tr> <td>Helico Briefing</td> <td></td> <td></td> <td></td> <td></td> <td></td> </tr> <tr> <td>AIR TACTICS</td> <td>169.2875</td> <td>110.9</td> <td>169.2875</td> <td>110.9</td> <td>FM</td> </tr> <tr> <td>Air Attack Briefing</td> <td>135.0250</td> <td></td> <td>135.0250</td> <td></td> <td>AM</td> </tr> <tr> <td>TOLC</td> <td>123.0250</td> <td></td> <td>123.0250</td> <td></td> <td>AM</td> </tr> <tr> <td>DECK</td> <td>163.1000</td> <td></td> <td>163.1000</td> <td></td> <td>FM</td> </tr> <tr> <td>CALCORD - MEDICAL</td> <td>156.0750</td> <td>156.7 (6)</td> <td>156.0750</td> <td>156.7 (6)</td> <td>FM</td> </tr> <tr> <td>AIRGUARD - Emergency Only</td> <td>168.6250</td> <td>110.9 (1)</td> <td>168.6250</td> <td></td> <td>FM</td> </tr> </table>					COMMAND	TX	Tone	RX	Tone	AM / FM	COMMAND	163.8250N	131.8000	173.7500N	131.8000	FM	AIR / GROUND TACTICAL	159.3750	192.8000	159.3750	192.8000	FM	AIR/AIR ROTARY WING	133.0250		133.0250		AM	Helico Briefing						AIR TACTICS	169.2875	110.9	169.2875	110.9	FM	Air Attack Briefing	135.0250		135.0250		AM	TOLC	123.0250		123.0250		AM	DECK	163.1000		163.1000		FM	CALCORD - MEDICAL	156.0750	156.7 (6)	156.0750	156.7 (6)	FM	AIRGUARD - Emergency Only	168.6250	110.9 (1)	168.6250		FM	Trainee Name Position Name Position Name Position Name Position Name Position	
COMMAND	TX	Tone	RX	Tone	AM / FM																																																																			
COMMAND	163.8250N	131.8000	173.7500N	131.8000	FM																																																																			
AIR / GROUND TACTICAL	159.3750	192.8000	159.3750	192.8000	FM																																																																			
AIR/AIR ROTARY WING	133.0250		133.0250		AM																																																																			
Helico Briefing																																																																								
AIR TACTICS	169.2875	110.9	169.2875	110.9	FM																																																																			
Air Attack Briefing	135.0250		135.0250		AM																																																																			
TOLC	123.0250		123.0250		AM																																																																			
DECK	163.1000		163.1000		FM																																																																			
CALCORD - MEDICAL	156.0750	156.7 (6)	156.0750	156.7 (6)	FM																																																																			
AIRGUARD - Emergency Only	168.6250	110.9 (1)	168.6250		FM																																																																			


FAA #	Type	Make/Model	Helibase	Avail	Start	Remarks	FAA #	Type	Make/Model	Helibase	Avail	Start	Remarks
5PJ	I	A-60	Meadowlark	0800	0830	Bucket							
5HT	I	S-64	Meadowlark	0800	0830	Tank							
5AJ	I	CH-47	Meadowlark	0800	0830	Tank							
C-902	II	UH-1H	Meadowlark	0800	0830	Bucket							
4TV	III	A-Star	Meadowlark	0800	0830	Helco/Recon/Bucket							
Eagle 7	III	A-Star	Meadowlark	0800	0830	Helco/Recon/Bucket							
3SH	III	206L	Meadowlark	0800	0830	Helco/Recon/Bucket							
1AC	III	407	Meadowlark	0800	0830	Helco/Recon/Bucket							

MEDICAL PLAN (ICS 206)

1. Incident Name: SCU LIGHTNING COMPLEX		2. Operational Period: Date From: <u>8/26/20</u> Date To: <u>8/27/20</u> Time From: <u>0700</u> Time To: <u>0700</u>					
3. Medical Aid Stations:							
Name	Location	Contact Number/Freq	Paramedics				
Cal Mat - California Medical Assistance Team	ICP	Lightning Communication	Yes				
MERT	ICP	(530) 417-4560	<input type="checkbox"/> No				
Gilroy Camp	Christmas Hill Park	(530) 417-4560	Yes				
4. Transportation (indicate air or ground):							
Ambulance Service	Location	Contact Number	Level of Service				
M801, M58 (Ground)	Calaveras Zone	Lightning Communication	ALS				
M7191, M7702, M815 (Ground)	Canyon Zone - Stanislaus County	Lightning Communication	ALS				
M50, M57 (Ground)	Christmas Hill Park	Lightning Communication	ALS				
Stanford Life Flight (Air)	Stanford - Santa Clara County	Lightning Communication	ALS				
CAL FIRE Copter 106 (Day Hoist)	Incident Helibase	Lightning Communication	BLS				
Guard 841 (24 hoist)	Incident Helibase	Lightning Communication	BLS				
5. Hospitals:							
Hospital Name	Address,	Contact Number(s)/ Frequency	Travel Time		Trauma Center	Burn Center	Helipad
	Lat & Long		Air	Ground			
St. Louise Regional Medical Center	9400 No Name Uno, Gilroy N37°02'08.24, W-121°34'16.15	(408) 848-8680	31	1:35	EDAT	<input type="checkbox"/>	<input checked="" type="checkbox"/>
Santa Clara Valley Medical	751 S. Bascom Ave. San Jose N37°18'50.30, W-121°56'03.28	(408) 885-6912	22	1:18	Level 1	<input checked="" type="checkbox"/>	<input checked="" type="checkbox"/>
Eden Medical Center	20103 Lake Chabot Rd Castro N37°41'56.28, W-122°05'21.36	(510) 727-3015	22	1:18	Level 2	<input type="checkbox"/>	<input checked="" type="checkbox"/>
Stanford Health Care	5555 W. Las Positas Blvd., Pleasanton N37°41'39.93, W- 121°52'51.22	(925)416-6525	18	1:06	Level 1	<input type="checkbox"/>	<input checked="" type="checkbox"/>
6. Special Medical Emergency Procedures							
Line Emergency Crew Supervisor will contact Division Supervisor with patient complaint/condition and location. - Division Group Supervisor Contacts: 1. Closest EMS resource 2. Communications Unit - Communications Unit Contacts: 1. Ground or Air ambulance as requested. 2. Operations 3. Safety 4. Medical Unit - Division Supervisor or designee will serve as point of contact and run medical emergency on assigned channel. 1. A pre-assigned tactical frequency (i.e. CALCORD) should be used for IWI and only for duration of the emergency. - Communications Unit will clear the Command channel for emergency traffic as needed for duration of the need.				Injury Reporting Procedures Nature of Injury: _____ Location of Patient: _____ Point of Contact: _____ Transportation Requested by: Air _____ Ground _____ Point of Pick-Up: _____ Lat: _____ Long: _____ Patient Unit ID: _____ Is an EMT with Patient: Yes _____ No _____ Age: _____ Sex: Male _____ Female _____			
Camp Emergency Contact Medical Unit with patient complaint/condition and location. Medical staff will respond to stabilize the patient. - Medical Unit contacts 1. Communications 2. Safety 3. Logistics 4. Operations 5. Crew Supervisor 6. Comp/Claims				All Emergencies - Secure the area and identified witnesses for later investigation. Keep accurate log of events.			
<input type="checkbox"/> Check box if aviation assets are utilized for rescue. If assets are used, coordinate with Air Operations.							
7. Prepared by (Medical Unit Leader):		J. Segura R. Beeson (T)		Signature: _____		_____	
8. Approved by (Safety Officer):		S. Buchmeir J. Novak (T)		Signature: _____		_____	
ICS 206		NIMS IAP		Date/Time:		8/25/2020 17:30	


ICS 205 - INCIDENT RADIO COMMUNICATIONS PLAN

CONTROLLED UNCLASSIFIED INFORMATION/BASIC

1. Incident Name: SCU LIGHTNING COMPLEX CANYON ZONE		2. Date/Time Prepared Date: 08/25/2020 Time: 1930		3. Operational Period: Date To: 08/27/20 Time To: 0700				
4. Communications								
Ch#	Function	Name	Assigned To	Rx Freq	Rx Tone	Tx Freq	Tx Tone	Notes
1								
2	COMMAND	NIFC C3	ALL BRANCHES	170.4250N	131.8 (T3)	168.0750N	131.8 (T3)	MT OSO LINKED W/CMD 10, 11, 38, & 40
3	COMMAND	NIFC C10	ALL BRANCHES	170.4125N	131.8 (T3)	165.9625N	131.8 (T3)	MT PACHECO LINKED W/CMD 3, 11, 38, & 40
4	COMMAND	NIFC C11	ALL BRANCHES	170.6875N	131.8 (T3)	166.5750N	131.8 (T3)	MT ALLISON LINKED W/CMD 3, 10, 38 & 40
5	COMMAND	NIFC C38	ALL BRANCHES	172.6750N	131.8 (T3)	163.0375N	131.8 (T3)	LOMA PRIETA PEAK LINKED W/CMD 3, 10, 11, & 40
6	COMMAND	NIFC C40	ALL BRANCHES	173.7500N	131.8 (T3)	163.8250N	131.8 (T3)	COPERNICUS PK LINKED W/CMD 3, 10, 11, & 38
7								
8	TACTICAL	VTAC14	DIV I & DIV J	159.4725N	156.7 (T6)	159.4725N	156.7 (T6)	BRANCH XV
9	TACTICAL	VFIRE 23	DIV K / L	154.2950N	156.7 (T6)	154.2950N	156.7 (T6)	BRANCH XV
10	TACTICAL	VFIRE 24	DIV M & DIV N	154.2725N	156.7 (T6)	154.2725N	156.7 (T6)	BRANCH XV
11								
12	TACTICAL	CDF T30	CANYON CONTENGENCY	151.3925N	192.8 (T16)	151.3925N	192.8 (T16)	
13								
14	AIR TO GROUND	CDF T20	ALL BRANCHES	159.3750N	192.8 (T16)	159.3750N	192.8 (T16)	
15	MEDICAL	CALCORD	ALL BRANCHES	156.0750N	156.7 (T6)	156.0750N	156.7 (T6)	
16	EMERGENCY	GUARD 21	ALL BRANCHES	168.6250N		168.6250N	110.9 (T1)	AIR GUARD
17								
18								
19								
20	EMERGENCY	GUARD 21	ALL BRANCHES	168.6250N		168.6250N	110.9 (T1)	AIR GUARD
5. Special Instructions								
TO CONFIRM YOU HAVE THE MOST CURRENT CLONE, ENSURE YOUR DISPLAY OF CHANNEL 16 OR 20 MATCHES CHANNEL 16 OR 20 OF THE 205 - HEIGHT AND POWER ARE KEY WHEN USING RADIOS; BE AT A HIGH POINT, USE A MOBILE IF POSSIBLE, AND USE RADIO RELAYS WHEN NEEDED								
6. Prepared by (Communications Unit Leader): Name: John Brooks, IMT6			Signature:  Date/Time: 08/25/20 1930					

ICS 205 - INCIDENT RADIO COMMUNICATIONS PLAN

CONTROLLED UNCLASSIFIED
INFORMATION/BASIC

1. Incident Name: SCU LIGHTNING COMPLEX DEER & CALAVERAS		2. Date/Time Prepared Date: 08/25/2020 Time: 1930		3. Operational Period: Date From: 08/26/20 Time From: 0700		Date To: 08/27/20 Time To: 0700		
4. Communications								
Ch#	Function	Name	Assigned To	Rx Freq	Rx Tone	Tx Freq	Tx Tone	Notes
1	COMMAND	CDF C1	DEER ZONE	151.3550N	103.5 (T8)	159.3000N	110.9 (T1)	MT DIABLO - BR III / IV
2	COMMAND	NIFC C3	CANYON / CALAVERAS	170.4250N	131.8 (T3)	168.0750N	131.8 (T3)	MT OSO LINKED W/CMD 10, 11, 38, & 40
3	COMMAND	NIFC C10	CANYON / CALAVERAS	170.4125N	131.8 (T3)	165.9625N	131.8 (T3)	MT PACHECO LINKED W/CMD 3, 11, 38, & 40
4	COMMAND	NIFC C11	CANYON / CALAVERAS	170.6875N	131.8 (T3)	166.5750N	131.8 (T3)	MT ALLISON LINKED W/CMD 3, 10, 38 & 40
5	COMMAND	NIFC C38	CANYON / CALAVERAS	172.6750N	131.8 (T3)	163.0375N	131.8 (T3)	LOMA PRIETA PEAK LINKED W/CMD 3, 10, 11, & 40
6	COMMAND	NIFC C40	CANYON / CALAVERAS	173.7500N	131.8 (T3)	163.8250N	131.8 (T3)	COPERNICUS PK LINKED W/CMD 3, 10, 11, & 38
7	TACTICAL	VFIRE 24	DEER ZONE	154.2725N	156.7 (T6)	154.2725N	156.7 (T6)	BR III / IV
8	TACTICAL	VTAC11	BR XXI / BR XXIII / BR XXIV	151.1375N	156.7 (T6)	151.1375N	156.7 (T6)	CALAVERAS ZONE
9	TACTICAL	CDF T29	DIV R	151.3475N	192.8 (T16)	151.3475N	192.8 (T16)	CALAVERAS ZONE BR XXVI
10	TACTICAL	VTAC12	DIV Q	154.4525N	156.7 (T6)	154.4525N	156.7 (T6)	CALAVERAS ZONE BR XXVI
11	TACTICAL	VTAC13	DIV T	158.7375N	156.7 (T6)	158.7375N	156.7 (T6)	CALAVERAS ZONE BR XXV
12	TACTICAL	VTAC14	DIV V	159.4725N	156.7 (T6)	159.4725N	156.7 (T6)	CALAVERAS ZONE BR XXV/BRIEFING BROADCAST
13	TACTICAL	CDF T30	DIV O	151.3925N	192.8 (T16)	151.3925N	192.8 (T16)	CALAVERAS ZONE BR XXV
14	AIR TO GROUND	CDF T20	ALL BRANCHES	159.3750N	192.8 (T16)	159.3750N	192.8 (T16)	
15	MEDICAL	CALCORD	ALL BRANCHES	156.0750N	156.7 (T6)	156.0750N	156.7 (T6)	
16	EMERGENCY	GUARD 21	ALL BRANCHES	168.6250N		168.6250N	110.9 (T1)	AIR GUARD
17								
18								
19								
20	EMERGENCY	GUARD 21	ALL BRANCHES	168.6250N		168.6250N	110.9 (T1)	AIR GUARD
5. Special Instructions								
TO CONFIRM YOU HAVE THE MOST CURRENT CLONE, ENSURE YOUR DISPLAY OF CHANNEL 16 OR 20 MATCHES CHANNEL 16 OR 20 OF THE 205 - HEIGHT AND POWER ARE KEY WHEN USING RADIOS; BE AT A HIGH POINT, USE A MOBILE IF POSSIBLE, AND USE RADIO RELAYS WHEN NEEDED								
6. Prepared by (Communications Unit Leader): Name: John Brooks, IMT6				Signature: 		Date/Time: 08/25/20 1930		
ICS 205 - CONTROLLED UNCLASSIFIED INFORMATION//BASIC								

TRAINING MESSAGE

TRAINEES:

**ALWAYS KEEP YOUR TASK BOOK SECURED.
IF LOST, YOU RUN THE RISK OF LOSING CREDIT
FOR TASK COMPLETED.**

TRAINERS:

**PLEASE REMEMBER TO COMPLETE THE FOLLOWING
DOCUMENTS FOR YOUR TRAINEES:**

- **TASK BOOK (SIGN & DATE THE COMPLETED TASKS)**
- **ICS 225- PLEASE STRIVE TO GIVE YOUR TRAINEE AN IN-DEPTH PERFORMANCE RATING**

***DON'T TRAIN UNTIL YOU GET IT RIGHT,
TRAIN UNTIL YOU CAN'T GET IT
WRONG!!***

Any questions please contact the Training Specialist:

Shane Vargas (530) 410-4225

Dottie Shaw (619) 971-1701

Ian Crossley (530) 681-5100

eFC-33 INITIAL INPUT FORM

1 2 3 4 5 6 7

Overhead: complete one form per person.
All Others: complete one form per vehicle.

Request Number						
----------------	--	--	--	--	--	--

State / Agency	Incident Number	Incident Name	Incident Index Code	Incident PCA Code
INCIDENT CA				

Strike Team	Resource ID - Fire Assignment	Home Station / Office Location
RESOURCE S T	E-3499	PASO ROBLES

YOUR NORMAL DUTY SCHEDULE	24 Hr 8-8	24 Hr 7-7	Other	One Box
	<input type="checkbox"/>	<input type="checkbox"/>	<input type="checkbox"/>	<input checked="" type="checkbox"/>

Portal to Portal?	<input checked="" type="checkbox"/>
-------------------	-------------------------------------

YOUR AGENCY	CAL FIRE
-------------	----------

HOME UNIT	S L U

COMMIT	Date	Time
RELEASE		

YOUR CELL PHONE #	
-------------------	--

PERSONNEL	Schedule		First Name	Rank or Classification	# of Regular Duty Scheduled Hours per Day									
	A	B			Mon	Tue	Wed	Thu	Fri	Sat	Sun			
EMPLOYEE 1														
EMPLOYEE 2														
EMPLOYEE 3														
EMPLOYEE 4														
EMPLOYEE 5														
EMPLOYEE 6														
	<input checked="" type="checkbox"/> One Box		Johnson	Robert	FC								24	24

VEHICLE	Schedule		Radio ID	Kind of Vehicle	ID No/X No
	A	B			
VEHICLE 1					
VEHICLE 2					
	<input checked="" type="checkbox"/> One Box		E-3499	FTH	0 2 X 1 2 3
	Chainsaw Quantity:		Portable Pump?		

Put a Dozer and it's Transport on a single form. All others, use one form per individual vehicle.



ADDITIONAL INFO

ATTN: Federal Resources (specifically Federal Contracted Resources/ADs)

RE: Virtual Finance Support

If you are assigned to a CAL FIRE managed incident, you have noticed that there is no “federal” time unit on site. We have developed a virtual finance section to provide you with your invoices/time sheets. We will need for you to **scan and email** your documents to the R5.CalFire.Support@firenet.gov email address. (The CAL FIRE finance section may have a scanner available if you do not have a “scanning” app on your phone and/or computer.) In the subject line enter:

TIME - Resource # - Company/Person Name – Attachment description - Fire Name/Number

Contract Crew/Equipment:

We need for you to send us the following information (even if you have submitted it to the CAL FIRE finance unit):

- Contact name, phone number, and email for on-site “leader”
- Resource Order
- Contract (Pages 1-2 and any additional pages referencing equipment/resource information)
- Crew Manifest
- Inspection (if one was done)
- Shift Tickets (signed by you and your incident supervisor) / CTRs (signed by your incident supervisor)

Administratively Determined (AD) Resources:

We need for you to send us the following information:

- Contact phone number and email
- Resource Order
- Casual Hire Form
- CTRs (signed by your incident supervisor)

Federal Employees:

As of right now, we are not planning to create OF-288s for Federal “regular” employees. Each of you can utilize your CTRs as your backup documentation for submitting your time sheets.

IF, however you require an OF-288, we will do our best to accommodate your needs. If you are claiming Hazard Pay, just like always, you must provide a justification for the claim (“H=Hazard”) is NOT enough. Use “action verbs” to explain what/why you are claiming the hazard.

WHEN YOU ARE CLOSE TO DEMOB:

- Give Finance a “Courtesy Email” 1-2 days prior to make sure all your documents have been received.
- Submit all time documentation (including travel home) ahead of demob.
- Send an email the morning of your demob to the Support email so the demob process can be started from the virtual finance group.

EMAIL: R5.CalFire.Support@firenet.gov

Please **do not** wait until the end of your assignment to get us your information. Since we are virtual, the process will take additional time.

SHIFT TICKET EXAMPLE

EMERGENCY SHIFT TICKET and EVALUATION FORM					Contractor Name	
Incident or Project Name SCU LIGHTNING COMPLEX			Incident Number CASCU 005740		Request Number E#	
Agreement Number XXX - 000000 - 00			Operator #1 BOB SMITH		Operator #2 TOM SMITH	
Equipment Make CAT			Equipment Model / Type D6XM		Operator Furnished By: <input checked="" type="checkbox"/> Contractor <input type="checkbox"/> Government	
Serial Number 111111			Licence Number 111111		Operating Supplies Furnished By: <input checked="" type="checkbox"/> Contractor <input type="checkbox"/> Government	
Equipment Use (Circle) Hours Days / Miles			Equipment Status <input checked="" type="checkbox"/> Inspected <input checked="" type="checkbox"/> Under Agreement		Released by Government <input type="checkbox"/> Withdrawn by Contractor	
Date	Start	Stop	Work	Assignment		
8/17	0700	2400	17	DIV M		
8/18	0001	0700	7	DIV M		
Vendor Rating					Govt. Rep. Name and Position - PRINT Mike Weber	
Met Performance Expectations					Govt. Rep. Signature <i>Mike Weber</i>	
Equipment in Safe Working Condition					Contractor Signature <i>Bob Smith</i>	
Operator Skill Level					Date 08/18/20	
Operates Safely					Time 0800	
Operator's Cooperation Level					Remarks/Comments ** NO DAMAGE/ NO CLAIMS	
Overall Performance					CALFIRE 297 (Rev 3-2011)	
* NOTE: Any rating of POOR requires an explanation in Comment Section.						
**Final evaluation or for more documentation, use an ICS Form 230 or equivalent.						
Pink - Finance Blue - Home Unit HE Coordinator Yellow - Vendor White - Govt Representative						

EMERGENCY SHIFT TICKET and EVALUATION FORM					Contractor Name	
The responsible Government Officer will complete this form each shift						
Incident or Project Name SCU LIGHTNING COMPLEX			Incident Number CASCU 005740		Request Number E # Here	
Agreement Number XXX - 000000 - 00			Operator #1 BOB SMITH		Operator #2 TOM SMITH	
Equipment Make TRANSPORT/ KENWORTH			Equipment Model / Type COZAD TRAILER /26 WHEELS		Operator Furnished By: <input checked="" type="checkbox"/> Contractor <input type="checkbox"/> Government	
Serial Number 1XP3ESMP14239012			Licence Number 9999999		Operating Supplies Furnished By: <input checked="" type="checkbox"/> Contractor <input type="checkbox"/> Government	
Equipment Use (Circle) Hours Days / Miles			Equipment Status <input checked="" type="checkbox"/> Inspected <input checked="" type="checkbox"/> Under Agreement		Released by Government <input type="checkbox"/> Withdrawn by Contractor	
Date	Start	Stop	Work	Assignment		
8/17	0700	2400	17	DIV M		
8/18	0001	0700	7	DIV M		
Vendor Rating					Govt. Rep. Name and Position - PRINT Mike Weber	
Met Performance Expectations					Govt. Rep. Signature <i>Mike Weber</i>	
Equipment in Safe Working Condition					Contractor Signature <i>Bob Smith</i>	
Operator Skill Level					Date 08/18/20	
Operates Safely					Time 0800	
Operator's Cooperation Level					Remarks/Comments ** NO DAMAGE/ NO CLAIMS	
Overall Performance					CALFIRE 297 (Rev 3-2011)	
* NOTE: Any rating of POOR requires an explanation in Comment Section.						
**Final evaluation or for more documentation, use an ICS Form 230 or equivalent.						
Pink - Finance Blue - Home Unit HE Coordinator Yellow - Vendor White - Govt Representative						

Turn shift tickets into Time Unit.

STATE OF CALIFORNIA
 DEPARTMENT OF FORESTRY AND FIRE PROTECTION
PROPERTY CERTIFICATION OF LOCATION OR DAMAGE
CERTIFICATE OF RESPONSIBILITY FOR INCIDENT OCCURRENCE
 CAL FIRE-101 page 1 of 2 (1/07)

Incident#:
Request #:

DOC. NUMBER:

LOCATION / INCIDENT NAME:	INCIDENT NUMBER:	UNIT:	REGION:	DATE:
---------------------------	------------------	-------	---------	-------

THE FOLLOWING ARTICLES WERE: (broken, left on line, damaged, or other)	DATE OF OCCURANCE:
--	--------------------

QUANTITY	UNIT OF MEAS.	CAL FIRE STOCK NUMBER (COMPLETE WHENEVER ASSIGNED)	DESCRIPTION (INDICATE SIZE, MAKE, MODEL, TYPE, ETC., TO CLEARLY DESCRIBE THE ITEM. PROVIDE ADEQUATE DATA TO EFFECTIVELY IDENTIFY EQUIPMENT OR PROPERTY)	PROPERTY NUMBER

DIV: _____ Div's Name: _____ Div. Signature: _____ Attention Division Group Sup., by signing you are authorizing the above items to be replaced by the Supply Unit and / or Fire.

LOCATION OF ITEMS: _____

REMARKS: _____

SIGNATURE OF PERSON CERTIFYING OCCURANCE AS DESCRIBED			
SIGNATURE:	PRINTED NAME:	TITLE:	DATE:

UNIT SUPERVISOR'S APPROVAL		
COMMENTS:		
SIGNATURE OF UNIT ADMINISTRATOR:	TITLE:	DATE:



PUBLIC INFORMATION



Official Sources of Public Information

Incident Information Line: 916-618-3195

Incident Information Line: 669-247-7431

Incident Media Line: 925-588-6809

Incident Website: www.fire.ca.gov

Email Signup: <https://tinyurl.com/CALFIREMEDIA>

Online Evacuation Map: <https://tinyurl.com/scu-evacmap>

CAL FIRE WEBSITE



SCAN ME

EMAIL SIGN UP



SCAN ME

EVACUATION MAPS



SCAN ME

STATUS

Incident Start Date: August 16, 2020	Incident Start Time: 4:00 AM
Acreage:	Containment:
Cause: Under Investigation	Total Personnel:

Media Law

The California State Penal Code Section 409.5(d) allows the news media to enter scenes of disaster, riot, or civil disturbance. Properly identified members of the news media should not be restricted from entering locations specified within the code. However, this does not include crime scenes, and does not imply that the news media may interfere with incident operations while they are in the areas of concern. If entering such a location that is hazardous, they should be advised; media access cannot be prevented for safety reasons unless their presence would impede CAL FIRE's mitigation of the incident or the disturbing of evidence. When working around the media, remember:

- Media **is not permitted** on private property without the property owners permission.
- If approached and questioned by the media and or the public, talk about your assignment or task at hand. Remember to wear all the appropriate PPE.
- If needed call for an incident PIO through the chain of command.
- Never speculate, give opinions or speak for others.
- There is no such thing as an "off the record" comment.

CAL FIRE Social Media Policy (Social Media 0691)

Social Media is increasingly being used by public agencies, the media as well as the public. This form of communication continues to grow rapidly in order to supply the instant gratification needs of society. Therefore when on a CAL FIRE incident you will adhere to the CAL FIRE Social Media Policy, 0691. You can get further information about the CAL FIRE Social Media Policy from the incident Public Information Officer. While assigned to the incident, there will be no posting of:

- Inappropriate information or materials
- No opinions
- No endorsements
- Inappropriate pictures or videos

Lost and Found

The Information Section will manage Lost and Found items for the incident. If you have lost an item leave your contact information and what you have lost at the Information Section. If you have found an item on the incident bring the item to the Information Section with your contact information as well.

Incident Base Camp Mailing Address

c/o Public Information Office/Trailer

4501 Pleasanton Ave.

Pleasanton, CA 94566

Pleasanton Ave.³ Street Entrance

Peer Support Team Message:

INCIDENT PEER SUPPORT:

We have a few people on the incident for any peer support related needs. The best way to get a hold of them is to call them directly.

Jeremy Sanders-916 281-6472

Shawna Powell-530 717-0667

John Kiszka-530 598-2615

Amber Henderson-805 794-1690

Clinician

Jill Gustafson-530 957-8020

or

CAL FIRE Peer Support/Helpline

916-445-4337

Below are other Team Members not on the incident who can also be contacted directly:

Tony Howard 916-224-1543

Mike Aiello 916-584-0548

Warren Parrish 916-823-6641

Nikole Schutz 916-709-0434

Amy Head 916-956-3277

Chris Lomanto 916-247-6974

Connie Quarisa 916-213-8697

In addition to peer support, if there is a need, we can have a culturally competent Clinician available on the incident that could meet with you on an individual and/or group basis.

Watch for the signs and symptoms of stress in yourself and the people around you. Try and stay positive and get much needed rest when you can. We can do this, together!

Stay Healthy, Stay Alert and Stay Strong!

CAL FIRE Employees can also contact EAP directly at: 1-866-327-4762

SCU Lightning Incident Maps may be accessed

by going to:

<https://ftp.nifc.gov>

or google: "nifc ftp"

Click:

>Incident Specific Data

>calif_n

>!CALFIRE

>2020_Incidents

>CA-SCU-005740_SCU_Lightning_Complex

>GIS >Products

> Desired Date > Select desired map

>Generally, the single most beneficial map to download is the Ops Map

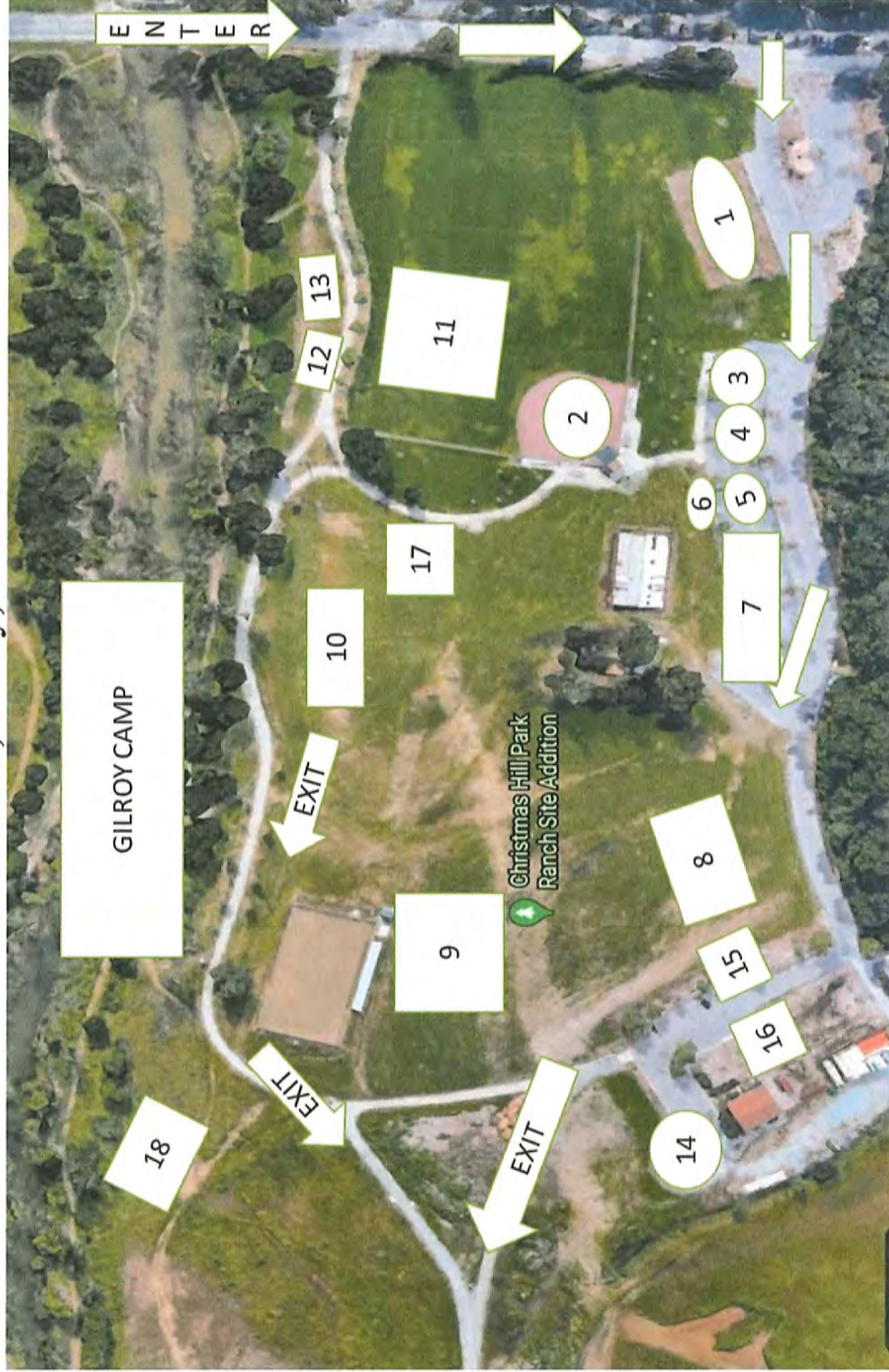
SCU LIGHTNING COMPLEX INCIDENT FACILITIES MAP

CA SCU 005740



1	Ground Support	6	CCC Sleeping	11	Tools & Equipment	16	Showers	21	Motels	26	Potable, Grey Water	31	Sheriff ALCO	36	Operations	41	JIC
2	Fuel	7	Tents	12	Lunches	17	Laundry	22	CAL OES	27	InclNet	32	Finance	37	COMMS	42	Plans
3	Dozer Parking	8	Water	13	CAL MAT	18	Comp Claims	23	Facilities	28	Briefing	33	Safety	38	Liaison	43	Situation
4	Vendor Staging	9	Supply	14	COVID Testing	19	Check-in & Demob	24	Food Unit	29	Employee Support Services	34	FBAN	39	Resources	44	JIC
5	Vendor Sleeping	10	Ice	15	Sleep Trailers	20	Time Unit	25	Inmate Tents	30	Medical	35	Ordering/LOGS	40	Clerical	45	P/O

Christmas Hill Park
7050 Miller Road, Gilroy, CA 95020



1. Feeding
2. Briefing
3. Plans
4. Motel, Logs Medical
5. Finance
6. Copy trailer
7. Overhead
8. Engines
9. Dozers
10. Fuel
11. Sleeping
12. Showers
13. Laundry
14. Supply
15. Hydration
16. Lunches
17. Med tent
18. Trailer camping

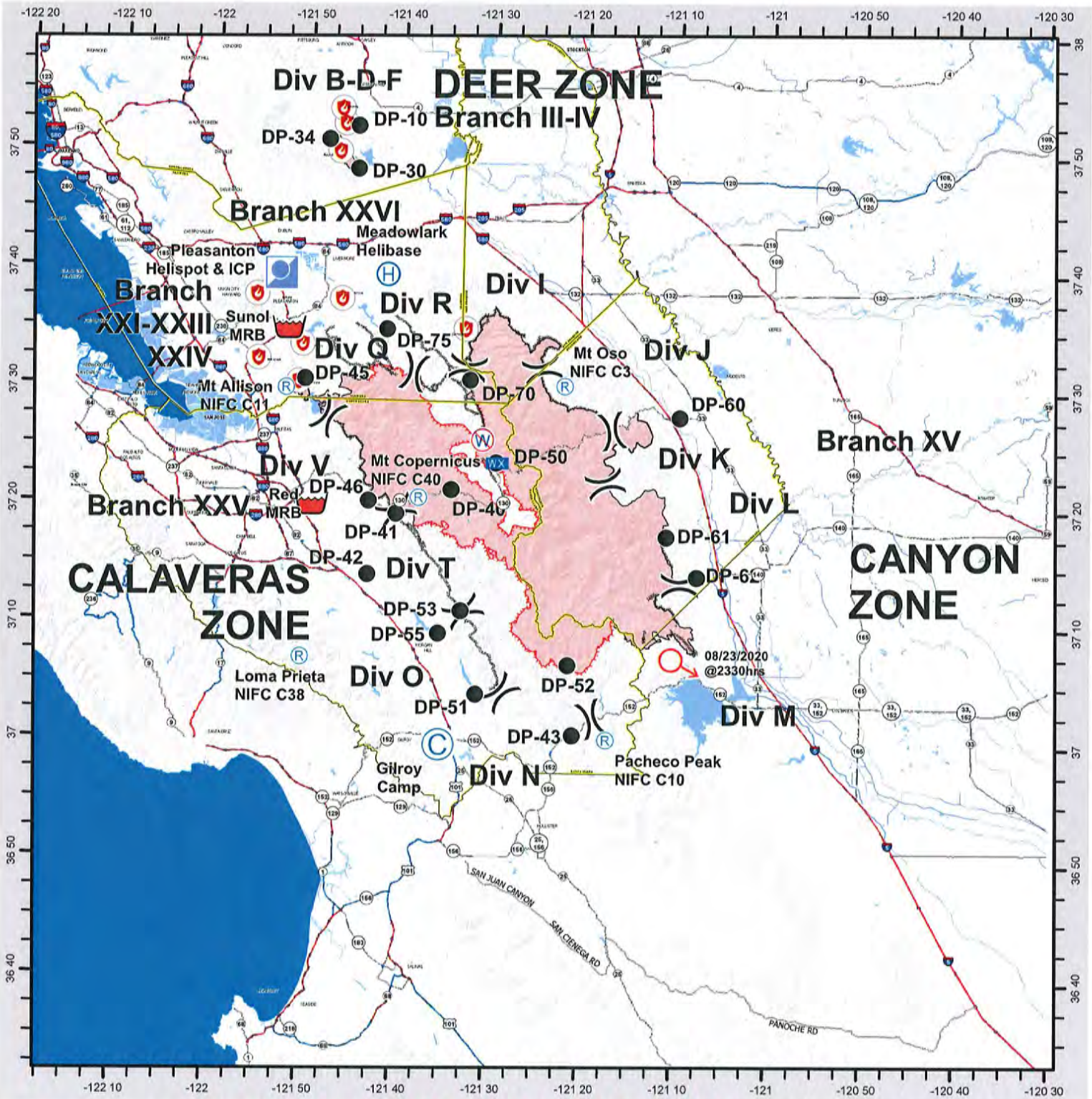
ALL HEAVY EQUIPMENT enter off of Grenache Way (use 7121 Grenache Way for GPS directions)

All others use Miller Road as your main entrance



SCU LIGHTNING COMPLEX INCIDENT TRANSPORTATION MAP

CA SCU 005740 - 8/26/2020



CAL FIRE - INCIDENT MANAGEMENT TEAM 6 *Established 1994*



Camp	Mobile Weather Unit	Fire Point	Completed Dozer Line
Drop Point	Repeater	Division Break	Completed Hand Line
Helibase	Retardant/Mud Pit	Uncontrolled Fire Edge	Wildfire Daily Fire Perimeter
Helispot	Spot Fire	Contained Line	County or Equivalent
Incident Command Post	Restricted Water Source		

IMT 6 GISS
8/25/2020
2353 Hours
NAD 83 Teale Albers

DISCLAIMER: The information on this map was prepared by IMT 6 GISS for the purpose of providing a general overview of the incident area. It is not intended to be used as a legal document or as a substitute for a detailed map. The information on this map is subject to change without notice.

THIS PAGE INTENTIONALLY LEFT BLANK

