

INCIDENT ACTION PLAN SCU LIGHTNING COMPLEX

CA-SCU-005740

Saturday



OPERATIONAL PERIOD

8/22/2020 0700

to

8/23/2020 0700



INCIDENT OBJECTIVES (ICS 202)

1. Incident Name: SCU LIGHTNING COMPLEX	2. Operational Period:	Date From: 8/22/2020 Time From: 0700	Date To: 8/23/2020 Time To: 0700
---	-------------------------------	---	-------------------------------------

3. Objective(s):

- Management Objectives**
- Provide for emergency personnel and public safety at all times.
 - Ensure COVID-19 precautions and best practices are met at all times.
 - Protect property, improvements, and infrastructure.
 - Ensure repopulation takes place in a quick, efficient, and effective manner.
 - Ensure coordinated, timely and accurate release of public information.
 - Foster and maintain relationships with all cooperators and stakeholders.
 - Protect economic, natural, cultural and heritage resources.
 - Maintain fiscal accountability and keep costs commensurate with values at risk.

- Control Objectives**
- Canyon Zone and Calaveras Zone**
- Keep the fire North of Hwy 152
 - Keep the fire West of I-5
 - Keep the fire South of Corral Hollow Rd.
 - Keep the fire East of I-680 and Hwy 101
- Deer Zone**
- Keep individual fires within current perimeters.

General Situational Awareness:

Steep and rugged terrain, critically dry and receptive fuel beds, active area for fire history and drought stressed trees.

In the COVID-19 environment, high density populations or large groups are particularly at risk. To help protect yourself, your family and to ensure all employees return home safely, make sure to practice social distancing.

Enhanced hygiene (especially handwashing), PPE & monitoring practices help limit the infection rate of first responders.

5. Site Safety Plan Required? Yes No

Approved Site Safety Plan(s) Located at:

6. Incident Action Plan

<input checked="" type="checkbox"/> ICS 203	<input checked="" type="checkbox"/> ICS 220	<input checked="" type="checkbox"/> PIO Message	<input checked="" type="checkbox"/> Peer Support Message
<input checked="" type="checkbox"/> ICS 204	<input checked="" type="checkbox"/> Facility Maps	<input checked="" type="checkbox"/> Transportation Map	<input type="checkbox"/>
<input checked="" type="checkbox"/> ICS 205	<input checked="" type="checkbox"/> Weather Forecast	<input checked="" type="checkbox"/> COVID Daily Check	<input type="checkbox"/>
<input checked="" type="checkbox"/> ICS 206	<input checked="" type="checkbox"/> Fire Behavior	<input checked="" type="checkbox"/> Finance Message	<input type="checkbox"/>
<input checked="" type="checkbox"/> ICS 208	<input checked="" type="checkbox"/> Training Message	<input checked="" type="checkbox"/> Shift Ticket Example	<input checked="" type="checkbox"/> ICS 214

7. Prepared By: Gabe Garcia Position/Title: PSC1 Signature:

8. Approved by Incident Commander: Jeff Veik Signature: _____

ORGANIZATION ASSIGNMENT LIST (ICS 203)

1. Incident Name: SCU LIGHTNING COMPLEX		2. Operational Period: Date From: 8/22/2020 Time From: 0700		Date To: 8/23/2020 Time To: 0700	
3. Incident Commander(s) and Command Staff:			7. Operation Section:		
IC/UC's	J.Veik	Operations	S. Corn		
Deputy	M. Blankenheim / D. Martin (T)	Deputy Operations	T. Ernst		
Safety Officer	J. Buchmeier / J. Novak (T)	Night Ops	J. McGough		
Information Officer	R. Brocchini / R. Lubben (T)	Staging Area			
Liaison Officer	M. Villalpando / J. Kiszka (T)	Zone	Deer		
4. Agency/Organization Representatives:		Branch	III/ IV (Round)/ (Palm)		
Agency/Organization	Name	Division/Group	B / D / F		
Alameda County SO	Paul Liskey	Division/Group			
PG&E	Pam Perdue	Division/Group			
Contra Costa County SO	Rich Kovar	Zone	Canyon		R. McLaughlin (12) / J. Gaines (T)(12)
Santa Clara County OEM	Dana Reed	Branch	XV (Del Puerto)		
State Parks	Wes Gray	Division/Group	I	D. Prevett / G. Laird (T)	
San Joaquin County OES	Shellie Lima	Division/Group	J	J. Renner (T)	
Stanislaus County SO	Richard Murdock	Division/Group	K/L		
Stanislaus County OES	Aaron Wilson	Division/Group	M	B. Todeschini	
Stanislaus County Fire	Eric Klevmyr	Division/Group	N	N. Boyce	
CCC	Shawn Fry	Division/Group			
Santa Clara County SO	Thea Lera	Division/Group			
TID	Jason Hicks	Division/Group			
San Francisco Water	Rick Duffey	Division/Group	Contingency	M. Milojevich	
CALOES	Jim Linn	Zone	Calaveras		S. Lane (12)
East Bay Regional Park	Brian Cordeiro	Branch	XXI / XXIII / XXIV		
CHP San Jose	George Gori	Division/Group			
CHP Dublin	Chris Sherry	Division/Group			
San Benito County	E.Taylor (Sheriff) K.Mangano (EOC)	Division/Group			
Merced Co Sheriff	Ray Frastad	Branch	XXV (Reservoir)		M. Martinez (T) (12)
5. Planning Section:		Division/Group	T	K. Mapes	
Chief	G. Garcia	Division/Group	V	K. Mapes	
Deputy	A. Mitchell / S. Sherwood (T)	Division/Group			
Resource Unit	J. Anderson / D. Scheurich J. Heald (T)	Branch	XXVI		D. Esades (T) (12)
Situation Unit	N. Wallingford / R. Broomfield	Division/Group	Q	B. Willson (T)	
Documentation Unit	M. Schaeffer	Division/Group	R	K. Stewart	
Demobilization Unit	J. Worden / M. Schaeffer	Division/Group			
GISS	T. Knecht	Division/Group			
FBAN	S. Volmer	Air Operations Branch		Director:	B. Kremensky
IMET	R. Walbrun	Air Support Group Supervisor		P. Mateer	
Training Tech Spec	S. Vargas / I. Crosslay (T)	Air Tactical Group Supervisor			
6. Logistics Section		Helibase Manager		R. Johnson / L. Kalfsbeek (T)	
Chief	S. Dohman				
Deputy Chief	J. Warden	8. Finance/Administration Section:			
Supply Unit	P. Lee	Chief	G. Belk		
Facilities Unit	D. Zumkeller	Deputy Chief	R. Browne		
Ground Support Unit	J. Luckenbach	Time Unit	J. Navarro		
Communications Unit	J. Brooks	Procurement Unit	J. Andrade		
Medical Unit	J. Segura / R. Beeson (T)	Comp/Claims Unit	B. Stirton		
Motel Unit	B. Brewer	Cost Unit	J. Tapia		
Prepared By: Name:	S. Sherwood	Position/Title:	PSC1	Signature: 	
ICS 203		Date/Time:	8/21/2020 2300 hours		



Canyon Zone Fire Weather Forecast



FORECAST NO: 4

NAME OF FIRE: SCU Lightning Complex

PREDICTION FOR: 0700 Sat-0700 Sunday

UNIT: CALFIRE Santa Clara

SHIFT DATE: Aug 22nd-Aug 23rd

SIGNED:

TIME AND DATE

Incident Meteorologist-Ryan Walbrun

FORECAST ISSUED: 2000 Aug 21st

...Fire Weather Watch Sunday for possible dry lightning and gusty outflow winds...

WEATHER DISCUSSION: Smoky skies will keep the inversion in place through midday with continued warm and dry conditions. Places outside of the smoke will see increasing high clouds as tropical moisture approaches the region signaling a change in the weather. Winds in the drainages and lower slopes will continue to be mainly light upslope. Winds on the ridges from the southwest. Continued increasing high clouds tonight with mild overnight temperatures and poor humidity recovery. For tonight be aware of lowering humidity above 1000 feet. This is a **common phenomenon for these hills, where humidity values actually lower after midnight and through sunrise to as low as the single digits. Take five at 2 am and check your RH.**

WEATHER FORECAST FOR SATURDAY:

WEATHER: Smoke and haze for most of the day with increasing mid and high level clouds from the south.

TEMPERATURES: Highs 86-92 (little change)

HUMIDITY: 11-22% (little change)

20 FT WINDS:

Ridgetop: West to **Southwest** 5-10 mph afternoon gusts 15 mph

Slopes : Upslope/Upcanyon 3-8 mph

STABILITY/INVERSION: Inversion will be moderate to strong with extensive smoke from other fires as well through midday before lifting by midday or early afternoon.

WEATHER FORECAST FOR SATURDAY NIGHT:

WEATHER: Smoke and haze. Otherwise increasing mid and high clouds from the south overnight.

TEMPERATURES: Lows 61-70, warmest above 1000 feet.

HUMIDITY RECOVERY: Steady humidity values 20-30% most the night but may drop to 10%.

20 FT WINDS: Ridgetop: Southwest winds 5-10 mph evening gusts 15 mph easing after dark.

Slopes : Downcanyon 2-5 mph.

STABILITY/INVERSION: Stable inversion layer setting up overnight.

SAFETY INFORMATION: We are approaching the 17 year anniversary of the largest deployment in California history. This occurred in these hills during the 2003 Santa Clara Lightning Complex. Humidity values plummeted to less than 15% overnight leading to the deployment. Take five at 2 am and check wx.

EXTENDED FORECAST: Increasing clouds Sunday leading to a chance of mainly dry thunderstorms Sunday night into Monday. Strong and gusty outflow winds associated with any storms will be of concern along with any strikes that lead to new starts.



Calaveras Zone Fire Weather Forecast



FORECAST NO: 4

NAME OF FIRE: SCU Lightning Complex

PREDICTION FOR: 0700 Sat-0700 Sunday

UNIT: CALFIRE Santa Clara

SHIFT DATE: Aug 22nd-Aug 23rd

SIGNED: *Ryan Walbrun*

TIME AND DATE

Incident Meteorologist-Ryan Walbrun

FORECAST ISSUED: 2000 Aug 21st

...Fire Weather Watch Sunday for possible dry lightning and gusty outflow winds...

WEATHER DISCUSSION: Marine layer will be about 1000 feet deep this morning along the west side of the Calaveras Zone with cooler temperatures and higher humidity to start the day on the lower slopes. Continued warm and dry above the inversion layer. The inversion will mix out with another warm and seasonably dry day. One change for today will be some increasing high clouds as tropical moisture starts to pass over the region. Winds will continue to be fairly light but change to more of Southwest direction on the ridges above 2000 feet. This will test some of the northern lines for the first time but for the most part continue to push the fire towards Hwy 130 and fires in the Canyon Zone. For tonight still expect the pattern of night time drying above the marine layer. **If working above the marine layer at 1000 feet or higher expect to see humidity values lower between midnight and end of shift Sunday. Warm and dry weather above the inversion at night means Watch Out!**

WEATHER FORECAST FOR SATURDAY:

WEATHER: Smoke and haze through midday otherwise increasing high clouds.

TEMPERATURES: Highs 82-88 (similar to yesterday)

HUMIDITY: 20-30% (little change)

20 FT WINDS: West to **Southwest** 4-8 mph thru midday then increasing 6-12 mph with gusts 18-20 mph.

STABILITY/INVERSION: Smoke in the morning will keep the inversion in place through morning but breaking by midday.

WEATHER FORECAST FOR SATURDAY NIGHT:

WEATHER: Increasing high clouds signaling a change in the weather otherwise smoke and haze.

TEMPERATURES: Lows 62-68, warmest above 1500 feet.

HUMIDITY RECOVERY: 55-65% lower slopes below 1000 feet. 30-40% above 1000 feet but interior **areas may see humidity values crash as low as 12-20% after midnight** thru sunrise. Watch for this!

20 FT WINDS: West to Southwest winds 5-10 mph evening gusts 15 mph easing after dark.

STABILITY/INVERSION: Stable inversion layer setting up overnight.

SAFETY INFORMATION: We are approaching the 17 year anniversary of the largest deployment in California history. This occurred in these hills during the 2003 Santa Clara Lightning Complex. Humidity values plummeted to less than 15% overnight leading to the deployment. Take five at 2 am and check wx.

EXTENDED FORECAST: Increasing clouds Sunday leading to a chance of mainly dry thunderstorms Sunday night into Monday. Strong and gusty outflow winds associated with any storms will be of concern along with any strikes that lead to new starts.



Deer Zone Fire Weather Forecast



FORECAST NO: 4

NAME OF FIRE: SCU Lightning Complex

PREDICTION FOR: 0700 Sat-0700 Sun

UNIT: CALFIRE Santa Clara

SHIFT DATE: Aug 22nd-Aug 23rd

SIGNED:

TIME AND DATE

Incident Meteorologist-Ryan Walbrun

FORECAST ISSUED: 2000 Aug 21st

...Fire Weather Watch Sunday for possible dry lightning and gusty outflow winds...

WEATHER DISCUSSION: Cool temperatures with higher humidity values to start the day. Temperatures will warm into the lower 90s once again. Westerly winds will continue to test containment lines in the Deer Zone this afternoon and evening. Some high clouds will be seen during the afternoon and evening hours as tropical moisture begins to surge northward. Continued breezy west winds this evening with cool temperatures and good humidity recovery.

WEATHER FORECAST FOR SATURDAY:

WEATHER: Smoke and haze through midday. Breezy West winds in the afternoon with high clouds.

TEMPERATURES: Highs 86-92 (little change from yesterday)

HUMIDITY: 28-35% (little change from yesterday)

20 FT WINDS: Westerly 5-10 mph thru midday then increasing 10-15 mph with frequent gusts 25 mph during the afternoon along Morgan Territory Rd and Los Vaqueros Reservoir

STABILITY/INVERSION: Smoke and cooler temperatures in the morning will keep the inversion strong through midday then breaking as winds increase and skies clear.

WEATHER FORECAST FOR SATURDAY NIGHT:

WEATHER: Breezy West winds through midnight. Otherwise, smoky with increasing high clouds.

TEMPERATURES: Lows 63-68

HUMIDITY RECOVERY: 60-70%

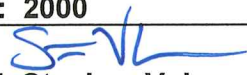
20 FT WINDS: Westerly winds 10-15 mph gusts to 25 mph thru midnight then slowly easing overnight.

STABILITY/INVERSION: Stable inversion layer setting up overnight.

SAFETY INFORMATION: West winds will continue to test the lines. Any new starts will be under the influence of breezy afternoon southwest winds. Smoke from nearby fires could limit air operations.

EXTENDED FORECAST: Increasing clouds Sunday leading to a chance of mainly dry thunderstorms Sunday night into Monday. Strong and gusty outflow winds associated with any storms will be of concern along with any strikes that lead to new starts.

FIRE BEHAVIOR FORECAST

FORECAST NUMBER: 5	TYPE OF FIRE: WILDFIRE
FIRE NAME: SCU LIGHTNING COMPLEX CASCU-005740	OPERATIONAL PERIOD: 8/22-8/23/20 0700-0700
DATE ISSUED: 8/21/20	TIME ISSUED: 2000
UNIT: SANTA CLARA	SIGNED:  Typed/printed: Stephen Volmer FBAN

INPUTS

WEATHER SUMMARY:

Mildly cooler temperatures across the unit with warm and dry overnight conditions. West to Southwest winds will surface when the inversion breaks, creating gusty conditions across the ridgetops. Daytime humidity will be in the low 20's across the complex. The East side of the Canyon zone will experience up slope/up valley winds throughout the day. Night time humidity will vary greatly between the zones, and elevations. Expect lower humidity to occur above 1,000' elv across the complex after midnight, with little decrease in fire activity.

****See the Weather Forecasts for the specific details of each zone****

OUTPUTS

FIRE BEHAVIOR

FUEL MODEL	RATE OF SPREAD FT/MIN	FLAME LENGTH FT	SPOTTING DISTANCE	PROBABILITY OF IGNITION
GRASS	100-145	9	.30 mi	92%
BRUSH	88-124	23	.75 mi	92%
OAK OVERSTORY	20-30	13	.50 mi	92%

GENERAL:

All fuels in the area are completely cured, with a large amount of dead fuels intermixed within them. The region is currently experiencing severe drought conditions. Expect critical rates of spread when fuels, wind, and topography are all in alignment. Heavy dead down fuels will be consumed 100% leaving deep seated heat in the ash pits. Expect an increase in fire activity when the inversion lifts and smoke clears the area. New starts and spot fires will come to life quickly. Poor overnight humidity recovery will lead to active fire behavior thought the evening.

*****Values above are valid for any new starts in the area*****

SPECIFIC:

- Fuels in the area are extremely receptive to ember cast and will produce spot fires easily, as will rollout in the steep drainages.
- Humidity values will decrease between midnight and sunrise to the low teens.
- Fire activity will decrease when going through the Oak and Pine overstory areas.

AIR OPERATIONS: Smoke and haze will fill the area producing limited visibility to the Southeast. Expect gusty conditions over the ridgetops in the afternoon. Transport winds W 7mph. Air resources might not be available for your tactical plans due to visibility or being timed out.

Sunset 19:47 Sunrise 06:28

SAFETY

- Winds increase and/or changes direction.....Weather getting hotter and dryer.
- Take weather often to track the trends in critical weather patterns before they come
- Fire weakened timber and branches will continue to release. Be alert while working in timbered areas.

SAFETY MESSAGE/PLAN (ICS 208)

1. Incident Name: SCU LIGHTNING COMPLEX	2. Operational Period:	Date From: 8/22/20	Date To: 8/23/20
		Time From: 0700	Time To: 0700

COVID-19: Remain diligent with masks, hygiene, and frequent hand washing; wipe down common surfaces on fire apparatus/vehicles.

OPERATIONAL LEADERSHIP: (IRPG Pg. vi) Motivation is the key to accomplishing difficult tasks under dangerous and stressful shifts. Provide purpose and direction while providing breaks to accomplish rest and hydration.

HYDRATION: Assure we all maintain nutrition and fluids before, during, and after work cycles; rest and seek shade or air-conditioned cab whenever possible.

FATIGUE: A factor to consider as the fire siege continues; keep members informed; acknowledge their accomplishment and hard-work, provide rest often while monitoring fire conditions.

CAUTION: The longer we go, the more complacency wants to set in, take time to assess and execute all planned actions safely. **WATCH** for Snags!

HEADS UP: Keep informed weather conditions and how it will affect your work zone; forecast all operations and account for lag time on work rates. Utilize a Risk Matrix and establish Hazard Controls.

ACCEPTING ASSIGNMENTS: Always apply the **P.A.C.E.** process, use depth in planning your operations with tactical decision making and tasks being performed:

Primary Plan Follow ICS 204 expectations when implementing work plans.

Alternate Plan Have a decision point to adjust and meet our goals safely with changing conditions.

Contingency Plan A forecasted plan at a decision point emphasizing firefighter safety with operation.

Emergency Plan **TRA**'s (Temporary Refuge Area) & **Safety Zones**; forecast the "what if" practice the emergency reporting procedure on the ICS 206.

4. Site Safety Plan Required? No


Approved Site Safety Plan(s) Located At:

5. Prepared By: J. Buchmeier / J. Novak (T) Position/Title: SOF1

ICS 208 Date/Time: 8/21/2020 / 2030

Signature: 

INCIDENT ACTION PLAN SAFETY ANALYSIS (ICS 215A)

1. Incident Name: SCU LIGHTNING COMPLEX	2. Operational Period:	Date From: 8/22/20 Time From: 0700	Date To: 8/23/20 Time To: 0700
Incident Area	Hazard/Risks	Mitigations	
ALL	COMPLACENCY	Don't underestimate the task at hand. Wear full PPE while on the line. Don't get caught off guard. Do you have the right radio clone.	
ALL	COVID 19	Adhere to local, state, federal, and CDC health guidelines. Maintain social distancing when applicable. Wear a mask for yourself and others. Report any symptoms immediately to a supervisor.	
ALL	FIRE BEHAVIOR	Know your LCES and maintain Situational Awareness. Use experienced Look Outs. Adhere to the downhill line construction guidelines. Monitor weather for changes in the wind, temp, and RH during the shift. Have a contingency plan with established decision points and Safety Zones.	
ALL	FATIGUE/HEAT/DEHYDRATION	Be alert for signs of fatigue and take breaks as necessary on hot dry days. Monitor incoming resources for level of fatigue. Drink water before, during, and after shifts, up to 1.5 gal. per shift. Be alert for signs of heat stress in yourself and others; use the buddy system. Eat small meals often and when possible. Find shade when you can. Drink electrolyte drinks at a 2:1 water/sport drink ratio.	
ALL	STEEP TERRAIN/ROLLING DEBRIS	Watch your footing while hiking in steep terrain. Be careful of loose rolling debris. Maintain Situational Awareness.	
ALL	LINE CONSTRUCTION	Conduct thorough briefing for all personnel (inside rear IRPG). Ensure LCES in place prior to engagement. Establish adequate Safety Zones. Use Downhill Line Checklist. Follow "Look Up, Look Down, Look All Around" procedures. Utilize Risk Management Process...reference the IRPG.	
ALL	HAZARD TREES	Identify and isolate the area to provide for the safety of others. Flag and make proper notifications. Do not fall trees out of your certification level.	
ALL	DRIVING HAZARDS	SLOW DOWN! Long travel times to the line, stay alert. Drive defensively! Expect the unexpected around every curve. Drive with headlights and seatbelts on. Narrow roads with limited passing room. Coordinate your movements on one-lane roads, follow traffic plans.	
ALL	AIRCRAFT OPERATIONS	Monitor air-to-ground frequency, they are your eyes in the sky. Use air-to-ground frequency to communicate with aircraft. Use clear, concise statements when directing aircraft. Only utilize aircraft to insert personnel on the line when necessary.	
ALL	PERFORM TAIL GATE SAFETY	Everyone should be briefed on the conditions and circumstances regarding the fire and their assignments per the IRPG.	
ALL	DOZER SAFETY	Watch for rolling material. Monitor safe working distances. Avoid working below dozer. Utilize communication with the operator (radio or hand signals).	
5. Prepared By: Joe Buchmeier		Position/Title: SOF1	
ICS 215A		Date/Time: 8/21/2020 / 2030	
		Signature: 	



CAL FIRE / INCIDENT MANAGEMENT TEAM 6

COVID-19 DAILY HEALTH CHECK SCREENING ALGORITHM



EACH WORKDAY WILL BEGIN WITH THE FOLLOWING:

Temperature recorded
Employee Screening Questionnaire

TEMPERATURE RECORDED

- Fever YES/NO? *Fever is considered $> 100.4^{\circ}$
- #### EMPLOYEE SCREENING QUESTIONNAIRE
- Are you feeling ill/feverish?
 - Are you having chills?
 - Do you have new or worsening SOB?
 - Do you have a new or worsening cough?
 - Do you have a new or prolonged sore throat?

No Fever and **No** answered to all
Employee Screening Questionnaire

Continue with Daily Operations

Yes Fever OR **Yes** answered to any of the Employee
Screening Questionnaire

- Wash Hands, Don Mask and Isolate from other employees. Maintain a distance of > 6 feet.
- Notify the Company Officer and/or Strike Team Leader.
- Notify Medical Unit Leader
- Refer employee to appropriate healthcare provider for evaluation and treatment.
- Disinfect "High-touch" surface areas.

REMINDERS TO ALL EMPLOYEES

- ◇ Self-Monitor yourself while you are on and off the line. If you experience any flu-like symptoms, COVID-19 symptoms, or any Respiratory illness symptoms contact your Company Officer and or Strike Team Leader.
- ◇ Maintain proper hand hygiene. Wash hands with soap and water for 20 seconds. Utilize hand sanitizer often. Do not shake hands, touch, or hug others.
- ◇ Cover coughs or sneezes (if not masked). Cloth Masks should be exchanged and or washed daily.
- ◇ Masks are required when out in the public on non-emergency business.
- ◇ Disinfect high-touch surfaces daily.
- ◇ Practice social distancing (> 6 feet) at meal times, dormitories, in-person meeting, or while in public.



CAL FIRE / Incident Management Team 6

COVID-19 Response Algorithm



Employee Response Action Plan

COVID-19 Positive Test or COVID-19 Positive Clinical Symptoms Presentation

- COVID 19 Symptoms: Cough, SOB, Fever or afebrile, Chills, Muscle Pain, Sore throat, Loss of taste/smell
- Employee informs Company Officer and Strike Team Leader of presumed/confirmed COVID-19 symptoms.
- Employee advised to seek evaluation by Medical Unit and CAL MAT or base camp medical unit.
- Crew initiates cleaning measures. Mask, safety glasses, gloves worn. (If needed, LOGS will assist)
- Medical Unit to notified IC, Liaison, Safety and Logistics ASAP. Medical Unit will notify COVID-19 Public Health Officer and determine need for testing and locations.



Incident Action Plan

- Company Officer / Strike Team Leader notified of personnel with COVID-19 positive test or symptom.
- Medical Unit evaluates individual(s) and need for care and evaluation.
- IC, Liaison, Safety and Logistics notification made to determine course of incident evaluation and response.
- Line Chief, Agency Administrator, and Region Office updated upon notification



Facilities Response

- Medical and Safety notified
- Incident Notification
- Disinfection plan initiated.
- Resource Status Evaluated



Medical Evaluation & Contact Tracing

- Personnel interviewed by Medical Unit . List of Positive contacts made in the last 5 days acquired. All Exposed are required to wear surgical mask, self monitor for Fever/Resp symptoms for up to 14 days (exposed personnel are subject to COVID-19 testing)
- Home Unit / Department utilized and retrospective tracking of Positive COVID-19 personnel inter-actions are identified within the last 5 days.
- Home Unit / Department updated by Company Officer / Strike Team Leader.
- Public Health Department is contacted and updated by IC or Designated Representative.
- Positive COVID-19 Employees w/symptoms will need to be evaluated by Health Department conducting testing, prior to returning to assignment.
- Positive COVID-19 Employees w/o symptoms may be required to be evaluated and resource status will be reviewed prior to returning to assignment.

ASSIGNMENT LIST (ICS 204 WF)

CONTROLLED UNCLASSIFIED
INFORMATION/BASIC

1. Incident Name:	2. Operational Period:	3. Branch	Division
SCU LIGHTNING COMPLEX <i>Canyon Zone</i>	Date From: 08/22/20 Date To: 08/23/20 Time From: 0700 Time To: 0700	XV (Del Puerto)	I
4. Operations Personnel:		Page 1 of 1	India

Operations Section Chief: S. Corn	Night Ops: J. McGough
Branch Director:	Branch Safety:
Division/Group Supervisor: D. Prevett / G. Laird (T)	Air Attack:

5. Resources Assigned:		** Resources Below in Bold are 12 Hour **					
Resource Identifier	ALS	LWD	Leader	Personnel	Request #	Hours	Reporting Location
STC XTB 4229C			A. Whisler	19	E-193	0700-0700	ICP
STG HUU 9122G			G. Lindemann	30	C-27	0700-0700	ICP
STL HUU 9128L			T. Meyers	9	E-365	0700-0700	ICP
DOZ LNU 1449			B. Pots	3	E-366	0700-0700	ICP
DOZ PVT E-1			J. Worrell	2	E-1	0700-0700	ICP
DOZ PVT E-211			J. Ontano	2	E-211	0700-0700	ICP
DOZ PVT E-212			T. Stevenson	2	E-212	0700-0700	ICP
DOZ PVT E-214			B. Welch	2	E-214	0700-0700	ICP
DOZ PVT E-217			R. Dudbah	2	E-217	0700-0700	ICP
W/T PVT E-5			K. Merwin	2	E-5	0700-0700	ICP
W/T PVT E-227			M. Lemus	2	E-227	0700-0700	ICP
W/T PVT E-231			J. Thoene	2	E-231	0700-0700	ICP
W/T PVT E-237			R. Webb	2	E-237	0700-0700	ICP
W/T PVT E-238			T. Waltjen	2	E-238	0700-0700	ICP
REMS O-377			R. Smith	4	O-377	0700-1900	ICP

6. Work Assignments:
Construct and/ or improve line.

7. Special Instructions:
If on Eastern side, NIFC CMD 3 and on the Western side, NIFC CMD 40

8. Communications							
Name	Ch	Function	Rx Freq	Rx Tone	Tx Freq	Tx Tone	Notes
NIFC C40	6	COMMAND	173.7500N	131.8 (T3)	163.8250N	131.8 (T3)	COPERNICUS PK LINKED W/CMD 3, 10, 11, & 38
VTAC14	8	TACTICAL	159.4725N	156.7 (T6)	159.4725N	156.7 (T6)	BRANCH XV
CDF T20	14	AIR TO GROUND	159.3750N	192.8 (T16)	159.3750N	192.8 (T16)	
CALCORD	15	MEDICAL	156.0750N	156.7 (T6)	156.0750N	156.7 (T6)	
GUARD 21	16	EMERGENCY	168.6250N		168.6250N	110.9 (T1)	AIR GUARD

9. Prepared by: Name:	Jamie Heald	RESL	Signature:
ICS 204	Date/Time: 8/21/2020	2200	Personnel Count: 85

ASSIGNMENT LIST (ICS 204 WF)

CONTROLLED UNCLASSIFIED
INFORMATION//BASIC

1. Incident Name:	2. Operational Period:	3. Branch	Division
SCU LIGHTNING COMPLEX <i>Canyon Zone</i>	Date From: 08/22/20 Date To: 08/23/20 Time From: 0700 Time To: 0700	XV (Del Puerto)	M
4. Operations Personnel:		Page 1 of 2	Mike

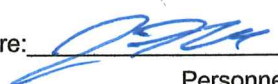
Operations Section Chief: S. Corn	Night Ops: J. McGough
Branch Director:	Branch Safety:
Division/Group Supervisor: B. Todeschini	Air Attack:

5. Resources Assigned:		** Resources Below in Bold are 12 Hour **					Hours	Reporting Location
Resource Identifier	ALS	LWD	Leader	Personnel	Request #			
STA OES 5806A			R. Roberts	20	E-282	0700-0700	ICP	
STA OES 6800A			E. Hauser	20	E-283	0700-0700	ICP	
STC LNU 9140C			R. Lawler	21	E-12	0700-0700	ICP	
STH HUU 9126G			H. Wayen	34	C-28	0700-0700	ICP	
STH SCU 9163H			M. Lane	17	C-85	0700-0700	ICP	
DOZ NEU 2346			D. Miner	3	E-4	0700-0700	ICP	
DOZ SKU 2643			L. Tupman	1	E-55	0700-1900	ICP	
DOZ BTU 2142			T. Adams	2	E-57	0700-0700	ICP	
DOZ SCU 1644			S. Mcvay	4	E-350	0700-0700	ICP	
DOZ SCU 1641			J. Logan	4	E-351	0700-0700	ICP	
DOZ SHU 2444			K. Ensley	3	E-368	0700-0700	ICP	
DOZ PVT E-215			L. Arias	3	E-215	0700-0700	ICP	
DOZ PVT E-218			J. Wyatt	2	E-218	0700-0700	ICP	
DOZ PVT E-219			B. Hendrix	2	E-219	0700-0700	ICP	
DOZ PVT E-222			S. Mahood	2	E-222	0700-0700	ICP	
W/T SCC 68			M. Gil	2	E-128	0700-0700	ICP	
W/T PVT E-224			N. Kusalich	2	E-224	0700-0700	ICP	
W/T PVT E-240			M. Sanchez	2	E-240	0700-0700	ICP	

6. Work Assignments:
Construct and or improve fireline.

7. Special Instructions:
If on Eastern side, NIFC CMD 3 and on the Western side, NIFC CMD 40

8. Communications							
Name	Ch	Function	Rx Freq	Rx Tone	Tx Freq	Tx Tone	Notes
NIFC C40	6	COMMAND	173.7500N	131.8 (T3)	163.8250N	131.8 (T3)	COPERNICUS PK LINKED W/CMD 3, 10, 11, & 38
VFIRE 24	10	TACTICAL	154.2725N	156.7 (T6)	154.2725N	156.7 (T6)	BRANCH XV
CDF T20	14	AIR TO GROUND	159.3750N	192.8 (T16)	159.3750N	192.8 (T16)	
CALCORD	15	MEDICAL	156.0750N	156.7 (T6)	156.0750N	156.7 (T6)	
GUARD 21	16	EMERGENCY	168.6250N		168.6250N	110.9 (T1)	AIR GUARD

9. Prepared by: Name: Jamie Heald RESL Signature: 

ICS 204 Date/Time: 8/21/2020 2200 Personnel Count: 144

ASSIGNMENT LIST (ICS 204 WF)

CONTROLLED UNCLASSIFIED
INFORMATION/BASIC

1. Incident Name:	2. Operational Period:	3. Branch	Division
SCU LIGHTNING COMPLEX Canyon Zone	Date From: 08/22/20 Date To: 08/23/20 Time From: 0700 Time To: 0700	XV (Del Puerto)	N
4. Operations Personnel:		Page 1 of 2	November

Operations Section Chief: S. Corn	Night Ops: J. McGough
Branch Director:	Branch Safety:
Division/Group Supervisor: N. Boyce	Air Attack:

5. Resources Assigned:	** Resources Below in Bold are 12 Hour **						
Resource Identifier	ALS	LWD	Leader	Personnel	Request #	Hours	Reporting Location
STC BTU 9211C			J. Morris	17	E-362	0700-0700	ICP
STG 9124G						0700-0700	ICP
CRW T2 C-23			K. Morse	20	C-23	0700-1900	ICP
STL TGU 9250L			L. Thomas	7	E-54	0700-0700	ICP
DOZ CON 221			C. Freyler	2	E-293	0700-0700	ICP
DOZ NEU 2341			M. Bellows	4	E-401	0700-0700	ICP
DOZ 1540					E-14	0700-0700	ICP
DOZ PVT E-210			A. Bushey	2	E-210	0700-0700	ICP
DOZ PVT E-216			S. Maynard	2	E-216	0700-0700	ICP
DOZ PVT E-220			B. Dunn	2	E-220	0700-0700	ICP
DOZ PVT E-221			T. Funes	2	E-221	0700-0700	ICP
DOZ PVT E-223			L. Gill	2	E-223	0700-0700	ICP
W/T XAL 6			G. Dunbar	2	E-335	0700-0700	ICP
W/T PVT E-232			N. Aguilar	2	E-232	0700-0700	ICP
W/T PVT E-233			R. Hurl	2	E-233	0700-0700	ICP
W/T PVT E-235			J. Epperson	2	E-235	0700-0700	ICP
W/T PVT E-246			K. Koontz	2	E-246	0700-0700	ICP
W/T PVT E-248			V. Reali	2	E-248	0700-0700	ICP

6. Work Assignments:
Construct and or improve hand line

7. Special Instructions:

8. Communications							
Name	Ch	Function	Rx Freq	Rx Tone	Tx Freq	Tx Tone	Notes
NIFC C40	6	COMMAND	173.7500N	131.8 (T3)	163.8250N	131.8 (T3)	COPERNICUS PK LINKED W/CMD 3, 10, 11, & 38
VFIRE 24	10	TACTICAL	154.2725N	156.7 (T6)	154.2725N	156.7 (T6)	BRANCH XV
CDF T20	14	AIR TO GROUND	159.3750N	192.8 (T16)	159.3750N	192.8 (T16)	
CALCORD	15	MEDICAL	156.0750N	156.7 (T6)	156.0750N	156.7 (T6)	
GUARD 21	16	EMERGENCY	168.6250N		168.6250N	110.9 (T1)	AIR GUARD

9. Prepared by: Name: Jamie Heald RESL Signature:

ICS 204 Date/Time: 8/21/2020 2200 Personnel Count: 72

MEDICAL PLAN (ICS 206)

1. Incident Name: SCU LIGHTNING COMPLEX		2. Operational Period: Date From: 8/22/20 Date To: 8/23/20 Time From: 0700 Time To: 0700					
3. Medical Aid Stations:							
Name	Location	Contact Number/Freq	Paramedics				
Cal Mat - California Medical Assistance Team	ICP	Lightning Communication	Yes				
MERT	ICP	Lightning Communications	<input type="checkbox"/> No				
4. Transportation (indicate air or ground):							
Ambulance Service	Location	Contact Number	Level of Service				
Medic 97, M801, M58 (Ground)	Calaveras Zone	Lightning Communication	ALS				
M7191, M7702, M815 (Ground)	Canyon Zone - Stanislaus County	Lightning Communication	ALS				
REMS 1	Canyon Zone	Lightning Communication	ALS				
Stanford Life Flight (Air)	Stanford - Santa Clara County	Lightning Communication	ALS				
CAL FIRE Copter 106 (Day Hoist)	Incident Helibase	Lightning Communication	ALS				
Guard 822 (Air) Night Ops	Redding	Lightning Communication	ALS				
5. Hospitals:							
Hospital Name	Address,	Contact Number(s)/ Frequency	Travel Time		Trauma Center	Burn Center	Helipad
	Lat & Long Helipad		Air	Ground			
John Muir/Walnut Creek	1601 Ygnacio Valley Road N37°54.77 W122°02.50	(925) 939-3000	13	30	Level 2	<input type="checkbox"/>	<input checked="" type="checkbox"/>
Santa Clara Valley Medical	751 S. Bascom Ave. San Jose N37°18.85 W121°56.05	(408) 885-5000	10	26	Level 1	<input checked="" type="checkbox"/>	<input checked="" type="checkbox"/>
UC Davis	2315 Stockton Blvd. Sacramento N38°33.28 W121°27.35	(916) 734-2011	15	35	Level 1	<input checked="" type="checkbox"/>	<input checked="" type="checkbox"/>
Community Regional Medical Center	2823 Fresno St. Fresno N36°44.65 W119°47.12	(559) 459-6000	33	1.5 hrs	Level 1	<input checked="" type="checkbox"/>	<input checked="" type="checkbox"/>
6. Special Medical Emergency Procedures							
Line Emergency Crew Supervisor will contact Division Supervisor with patient complaint/condition and location. - Division Group Supervisor Contacts: 1. Closest EMS resource 2. Communications Unit - Communications Unit Contacts: 1. Ground or Air ambulance as requested. 2. Operations 3. Safety 4. Medical Unit - Division Supervisor or designee will serve as point of contact and run medical emergency on assigned channel. 1. A pre-assigned tactical frequency (i.e. CALCORD) should be used for IWI and only for duration of the emergency. - Communications Unit will clear the Command channel for emergency traffic as needed for duration of the need.				Injury Reporting Procedures Nature of Injury: _____ Location of Patient: _____ Point of Contact: _____ Transportation Requested by: Air ___ Ground ___ Point of Pick-Up: _____ Lat: _____ Long: _____ Patient Unit ID: _____ Is an EMT with Patient: Yes ___ No ___ Age: _____ Sex: Male ___ Female ___			
Camp Emergency Contact Medical Unit with patient complaint/condition and location. Medical staff will respond to stabilize the patient. - Medical Unit contacts 1. Communications 2. Safety 3. Logistics 4. Operations 5. Crew Supervisor 6. Comp/Claims				All Emergencies - Secure the area and identified witnesses for later investigation. Keep accurate log of events.			
<input type="checkbox"/> Check box if aviation assets are utilized for rescue. If assets are used, coordinate with Air Operations.							
7. Prepared by (Medical Unit Leader): J. Segura R. Beeson (T)				Signature:			
8. Approved by (Safety Officer): S. Buchmeir J. Novak (T)				Signature:			
ICS 206		NIMS IAP		Date/Time:		8/21/2020 17:30	

ICS 205 - INCIDENT RADIO COMMUNICATIONS PLAN

1. Incident Name: SCU LIGHTNING COMPLEX CALAVERAS & DEER ZONES		2. Date/Time Prepared Date: 08/21/2020 Time: 1930		3. Operational Period: Date To: 08/23/20 Time To: 0700	
---	--	--	--	---	--


4. Communications								
Ch#	Function	Name	Assigned To	Rx Freq	Rx Tone	Tx Freq	Tx Tone	Notes
1								
2	COMMAND	NIFC C3	ALL BRANCHES	170.4250N	131.8 (T3)	168.0750N	131.8 (T3)	MT OSO LINKED W/CMD 10, 11, 38, & 40
3	COMMAND	NIFC C10	ALL BRANCHES	170.4125N	131.8 (T3)	165.9625N	131.8 (T3)	MT DIABLO LINKED W/CMD 3, 11, 38, & 40
4	COMMAND	NIFC C11	ALL BRANCHES	170.6875N	131.8 (T3)	166.5750N	131.8 (T3)	MT ALLISON LINKED W/CMD 3, 10, , 38 & 40
5	COMMAND	NIFC C38	ALL BRANCHES	172.6750N	131.8 (T3)	163.0375N	131.8 (T3)	LOMA PRIETA PEAK LINKED W/CMD 3, 10, 11, & 40
6	COMMAND	NIFC C40	ALL BRANCHES	173.7500N	131.8 (T3)	163.8250N	131.8 (T3)	COPERNICUS PK LINKED W/CMD 3, 10, 11, & 38
7	TACTICAL	VFIRE 24	DEER ZONE	154.2725N	156.7 (T6)	154.2725N	156.7 (T6)	BR IV & DIV B / D / F
8	TACTICAL	VTAC11	BR XXI / BR XXIII / BR XXIV	151.1375N	156.7 (T6)	151.1375N	156.7 (T6)	
9	TACTICAL	CDF T29	DIV R	151.3475N	192.8 (T16)	151.3475N	192.8 (T16)	BR XXVI
10	TACTICAL	VTAC12	DIV Q	154.4525N	156.7 (T6)	154.4525N	156.7 (T6)	BR XXVI
11	TACTICAL	VTAC13	DIV T	158.7375N	156.7 (T6)	158.7375N	156.7 (T6)	BR XXV
12	TACTICAL	VTAC14	DIV V	159.4725N	156.7 (T6)	159.4725N	156.7 (T6)	BR XXV/BRIEFING BROADCAST
13								
14	AIR TO GROUND	CDF T20	ALL BRANCHES	159.3750N	192.8 (T16)	159.3750N	192.8 (T16)	
15	MEDICAL	CALCORD	ALL BRANCHES	156.0750N	156.7 (T6)	156.0750N	156.7 (T6)	
16	EMERGENCY	GUARD 21	ALL BRANCHES	168.6250N		168.6250N	110.9 (T1)	AIR GUARD
17								
18								
19								
20	EMERGENCY	GUARD 21	ALL BRANCHES	168.6250N		168.6250N	110.9 (T1)	AIR GUARD

5. Special Instructions
 TO CONFIRM YOU HAVE THE MOST CURRENT CLONE, ENSURE YOUR DISPLAY OF CHANNEL 16 OR 20 MATCHES CHANNEL 16 OR 20 OF THE 205 - HEIGHT AND POWER ARE KEY WHEN USING RADIOS; BE AT A HIGH POINT, USE A MOBILE IF POSSIBLE, AND USE RADIO RELAYS WHEN NEEDED

6. Prepared by (Communications Unit Leader): Name: John Brooks, IMT6
 Signature: 
 Date/Time: 08/21/20 1930
 NIMS IAP

ICS 205 - INCIDENT RADIO COMMUNICATIONS PLAN

CONTROLLED UNCLASSIFIED INFORMATION/BASIC

1. Incident Name: SCU LIGHTNING COMPLEX CANYON ZONE		2. Date/Time Prepared Date: 08/21/2020 Time: 1930		3. Operational Period: Date To: 08/23/20 Time To: 0700				
4. Communications								
Ch#	Function	Name	Assigned To	Rx Freq	Rx Tone	Tx Freq	Tx Tone	Notes
1								
2	COMMAND	NIFC C3	ALL BRANCHES	170.4250N	131.8 (T3)	168.0750N	131.8 (T3)	MT OSO LINKED W/CMD 10, 11, 38, & 40
3	COMMAND	NIFC C10	ALL BRANCHES	170.4125N	131.8 (T3)	165.9625N	131.8 (T3)	MT DIABLO LINKED W/CMD 3, 11, 38, & 40
4	COMMAND	NIFC C11	ALL BRANCHES	170.6875N	131.8 (T3)	166.5750N	131.8 (T3)	MT ALLISON LINKED W/CMD 3, 10, , 38 & 40
5	COMMAND	NIFC C38	ALL BRANCHES	172.6750N	131.8 (T3)	163.0375N	131.8 (T3)	LOMA PRIETA PEAK LINKED W/CMD 3, 10, 11, & 40
6	COMMAND	NIFC C40	ALL BRANCHES	173.7500N	131.8 (T3)	163.8250N	131.8 (T3)	COPERNICUS PK LINKED W/CMD 3, 10, 11, & 38
7								
8	TACTICAL	VTAC14	DIV I & DIV J	159.4725N	156.7 (T6)	159.4725N	156.7 (T6)	BRANCH XV
9	TACTICAL	VFIRE 23	DIV K / L	154.2950N	156.7 (T6)	154.2950N	156.7 (T6)	BRANCH XV
10	TACTICAL	VFIRE 24	DIV M & DIV N	154.2725N	156.7 (T6)	154.2725N	156.7 (T6)	BRANCH XV
11								
12	TACTICAL	CDF T30	CANYON CONTENGENCY	151.3925N	192.8 (T16)	151.3925N	192.8 (T16)	
13								
14	AIR TO GROUND	CDF T20	ALL BRANCHES	159.3750N	192.8 (T16)	159.3750N	192.8 (T16)	
15	MEDICAL	CALCORD	ALL BRANCHES	156.0750N	156.7 (T6)	156.0750N	156.7 (T6)	
16	EMERGENCY	GUARD 21	ALL BRANCHES	168.6250N		168.6250N	110.9 (T1)	AIR GUARD
17								
18								
19								
20	EMERGENCY	GUARD 21	ALL BRANCHES	168.6250N		168.6250N	110.9 (T1)	AIR GUARD
5. Special Instructions								
TO CONFIRM YOU HAVE THE MOST CURRENT CLONE, ENSURE YOUR DISPLAY OF CHANNEL 16 OR 20 MATCHES CHANNEL 16 OR 20 OF THE 205 - HEIGHT AND POWER ARE KEY WHEN USING RADIOS; BE AT A HIGH POINT, USE A MOBILE IF POSSIBLE, AND USE RADIO RELAYS WHEN NEEDED								
6. Prepared by (Communications Unit Leader): Name: John Brooks, IMT6			Signature: 					
ICS 205 - CONTROLLED UNCLASSIFIED INFORMATION/BASIC			Date/Time: 08/21/20 1930					

TRAINING MESSAGE

TRAINERS:

**PLEASE REMEMBER TO REVIEW THE TASK BOOK WITH
YOUR TRAINEE EACH DAY AND SET GOALS FOR THE
OPERATIONAL PERIOD.**

TRAINEES:

**IF YOU HAVE ANY QUESTIONS REGARDING YOUR
TRAINING ASSIGNMENT, PLEASE CONTACT THE TRAINING
SPECIALIST.**

*Don't train until you get it right, train until you
can't get it wrong!*

Any questions please contact the Training Specialist:

Shane Vargas (530) 410-4225

Dottie Shaw (619) 971-1701

Ian Crossley (530) 681-5100

eFC-33 INITIAL INPUT FORM

1 2 3 4 5 6 7

Overhead: complete one form per person.
All Others: complete one form per vehicle.

Request Number						
----------------	--	--	--	--	--	--

INCIDENT	State: Agency	Incident Number	Incident Name	Incident Index Code	Incident PCA Code
CA					

RESOURCE	Strike Team	Resource ID - Fire Assignment	Home Station / Office Location
S T		E-3499	FASO/ROBLES

YOUR NORMAL DUTY SCHEDULE	24 Hr 8-8 24 Hr 7-7 Other	Portal to Portal?	YOUR AGENCY	HOME UNIT	COMMIT	RELEASE	YOUR CELL PHONE #
<input checked="" type="checkbox"/> One Box		<input checked="" type="checkbox"/>	CAL FIRE	S L U			

PERSONNEL	Schedule	A	B	Other	Last Name	First Name	Rank or Classification	# of Regular Duty Scheduled Hours per Day								
								Mon	Tue	Wed	Thu	Fri	Sat	Sun		
EMPLOYEE 1																
EMPLOYEE 2																
EMPLOYEE 3																
EMPLOYEE 4																
EMPLOYEE 5																
EMPLOYEE 6																
	<input checked="" type="checkbox"/> One Box				Johnson	Robert	FC									

VEHICLE	Schedule	A	B	Other	If Other, explain	Radio ID	Kind of Vehicle	ID No/X No
VEHICLE 1								X
VEHICLE 2								X
	<input checked="" type="checkbox"/> One Box					E-3499	FTH	0 2 X 1 2 3
	Chainsaw Quantity:				Portable Pump?			

Put a Dozer and It's Transport on a single form. All others use one form per individual vehicle.



ADDITIONAL INFO

SHIFT TICKET EXAMPLE

EMERGENCY SHIFT TICKET and EVALUATION FORM					Contractor Name DOZER DUDE	
Incident or Project Name SCU LIGHTNING COMPLEX		Incident Number CASCU 005740	Request Number E#		Operator #1 BOB SMITH	Operator #2 TOM SMITH
Agreement Number XXX - 000000 - 00					Operator Furnished By: <input checked="" type="checkbox"/> Contractor <input type="checkbox"/> Government	
Equipment Make CAT		Equipment Model / Type D6XM			Operating Supplies Furnished By: <input checked="" type="checkbox"/> Contractor <input type="checkbox"/> Government	
Serial Number 111111		Licence Number 111111			Equipment Status <input checked="" type="checkbox"/> Inspected <input checked="" type="checkbox"/> Under Agreement	
Equipment Use (Circle) Hours Days / Miles					Released by Government <input type="checkbox"/>	
Date Mo / Day	Start	Stop	Work	Assignment	Withdrawn by Contractor <input type="checkbox"/>	
8/17	0700	2400	17	DIV M	NO DAMAGE/ NO CLAIMS	
8/18	0001	0700	7	DIV M		
Vendor Rating					Govt. Rep. Name and Position - PRINT Mike Weber	
	Poor*	Avg.	Good	Exc.	N/A	Govt. Rep. Signature <i>Mike Weber</i>
Met Performance Expectations		Vendor Rating must be done.			Contractor Signature <i>Bob Smith</i>	
Equipment in Safe Working Condition						
Operator Skill Level						
Operates Safely						
Operator's Cooperation Level						
Overall Performance		Date 08/18/20	Time 0800	Calfire 297 (Rev 3-2011)		

* NOTE: Any rating of POOR requires an explanation in Comment Section.
 **Final evaluation or for more documentation, use an ICS Form 230 or equivalent.

Pink - Finance Blue - Home Unit HE Coordinator Yellow - Vendor White - Govt Representative

EMERGENCY SHIFT TICKET and EVALUATION FORM					Contractor Name DUDE TRANSPORT	
The responsible Government Officer will complete this form each shift					Operator #1 BOB SMITH	
Incident or Project Name SCU LIGHTNING COMPLEX		Incident Number CASCU 005740	Request Number E # Here		Operator #2 TOM SMITH	
Agreement Number XXX - 000000 - 00					Operator Furnished By: <input checked="" type="checkbox"/> Contractor <input type="checkbox"/> Government	
Equipment Make TRANSPORT/ KENWORTH		Equipment Model / Type COZAD TRAILER /26 WHEELS			Operating Supplies Furnished By: <input checked="" type="checkbox"/> Contractor <input type="checkbox"/> Government	
Serial Number 1XP3ESMP14239012		Licence Number 9999999			Equipment Status <input checked="" type="checkbox"/> Inspected <input checked="" type="checkbox"/> Under Agreement	
Equipment Use (Circle) Hours Days / Miles					Released by Government <input type="checkbox"/>	
Date Mo / Day	Start	Stop	Work	Assignment	Withdrawn by Contractor <input type="checkbox"/>	
8/17	0700	2400	17	DIV M	NO DAMAGE/ NO CLAIMS	
8/18	0001	0700	7	DIV M		
Vendor Rating					Govt. Rep. Name and Position - PRINT Mike Weber	
	Poor*	Avg.	Good	Exc.	N/A	Govt. Rep. Signature <i>Mike Weber</i>
Met Performance Expectations		Vendor Rating must be done.			Contractor Signature <i>Bob Smith</i>	
Equipment in Safe Working Condition						
Operator Skill Level						
Operates Safely						
Operator's Cooperation Level						
Overall Performance		Date 08/18/20	Time 0800	Calfire 297 (Rev 3-2011)		

* NOTE: Any rating of POOR requires an explanation in Comment Section.
 **Final evaluation or for more documentation, use an ICS Form 230 or equivalent.

Pink - Finance Blue - Home Unit HE Coordinator Yellow - Vendor White - Govt Representative

Turn shift tickets into Time Unit.



PUBLIC INFORMATION



Official Sources of Public Information

Incident Information Line: 916-618-3195

Incident Information Line: 669-247-7431

Incident Media Line: 925-588-6809

Incident Website: www.fire.ca.gov

Email Signup: <https://tinyurl.com/CALFIREMEDIA>

Online Evacuation Map: <https://tinyurl.com/scu-evacmap>

CAL FIRE WEBSITE



SCAN ME

EMAIL SIGN UP



SCAN ME

EVACUATION MAPS



SCAN ME

STATUS

Incident Start Date: August 16, 2020

Incident Start Time: 4:00 AM

Acreage:

Containment:

Cause: Under Investigation

Total Personnel:

Media Law

The [California State Penal Code Section 409.5\(d\)](#) allows the news media to enter scenes of disaster, riot, or civil disturbance. Properly identified members of the news media should not be restricted from entering locations specified within the code. However, this does not include crime scenes, and does not imply that the news media may interfere with incident operations while they are in the areas of concern. If entering such a location that is hazardous, they should be advised; media access cannot be prevented for safety reasons unless their presence would impede CAL FIRE's mitigation of the incident or the disturbing of evidence. When working around the media, remember:

- Media **is not permitted** on private property without the property owners permission.
- If approached and questioned by the media and or the public, talk about your assignment or task at hand. Remember to wear all the appropriate PPE.
- If needed call for an incident PIO through the chain of command.
- Never speculate, give opinions or speak for others.
- There is no such thing as an "off the record" comment.

CAL FIRE Social Media Policy (Social Media 0691)

Social Media is increasingly being used by public agencies, the media as well as the public. This form of communication continues to grow rapidly in order to supply the instant gratification needs of society. Therefore when on a CAL FIRE incident you will adhere to the CAL FIRE Social Media Policy, 0691. You can get further information about the CAL FIRE Social Media Policy from the incident Public Information Officer. While assigned to the incident, there will be no posting of:

- Inappropriate information or materials
- No opinions
- No endorsements
- Inappropriate pictures or videos

Lost and Found

The Information Section will manage Lost and Found items for the incident. If you have lost an item leave your contact information and what you have lost at the Information Section. If you have found an item on the incident bring the item to the Information Section with your contact information as well.

Incident Base Camp Mailing Address

c/o Public Information Office/Trailer

4501 Pleasanton Ave.

Pleasanton, CA 94566

Pleasanton Ave. Street Entrance

Peer Support Team Message:

INCIDENT PEER SUPPORT:

We have a few people on the incident for any peer support related needs. The best way to get a hold of them is to call them directly.

Jeremy Sanders-916 281-6472

Shawna Powell-530 717-0667

John Kiszka-530 598-2615

or

CAL FIRE Peer Support/Helpline

916-445-4337

Below are other Team Members not on the incident who can also be contacted directly:

Tony Howard 916-224-1543

Mike Aiello 916-584-0548

Warren Parrish 916-823-6641

Nikole Schutz 916-709-0434

Amber Henderson 805-794-1690

Amy Head 916-956-3277

Chris Lomanto 916-247-6974

Connie Quarisa 916-213-8697

In addition to peer support, if there is a need, we can have a culturally competent Clinician available on the incident that could meet with you on an individual and/or group basis.

Watch for the signs and symptoms of stress in yourself and the people around you. Try and stay positive and get much needed rest when you can. We can do this, together!

Stay Healthy, Stay Alert and Stay Strong!

CAL FIRE Employees can also contact EAP directly at: 1-866-327-4762

SCU Lightning Incident Maps may be accessed

by going to:

<https://ftp.nifc.gov>

or google: "nifc ftp"

Click:

>Incident Specific Data

>calif_n

>!CALFIRE

>2020_Incidents

>CA-SCU-005740_SCU_Lightning_Complex

>GIS >Products

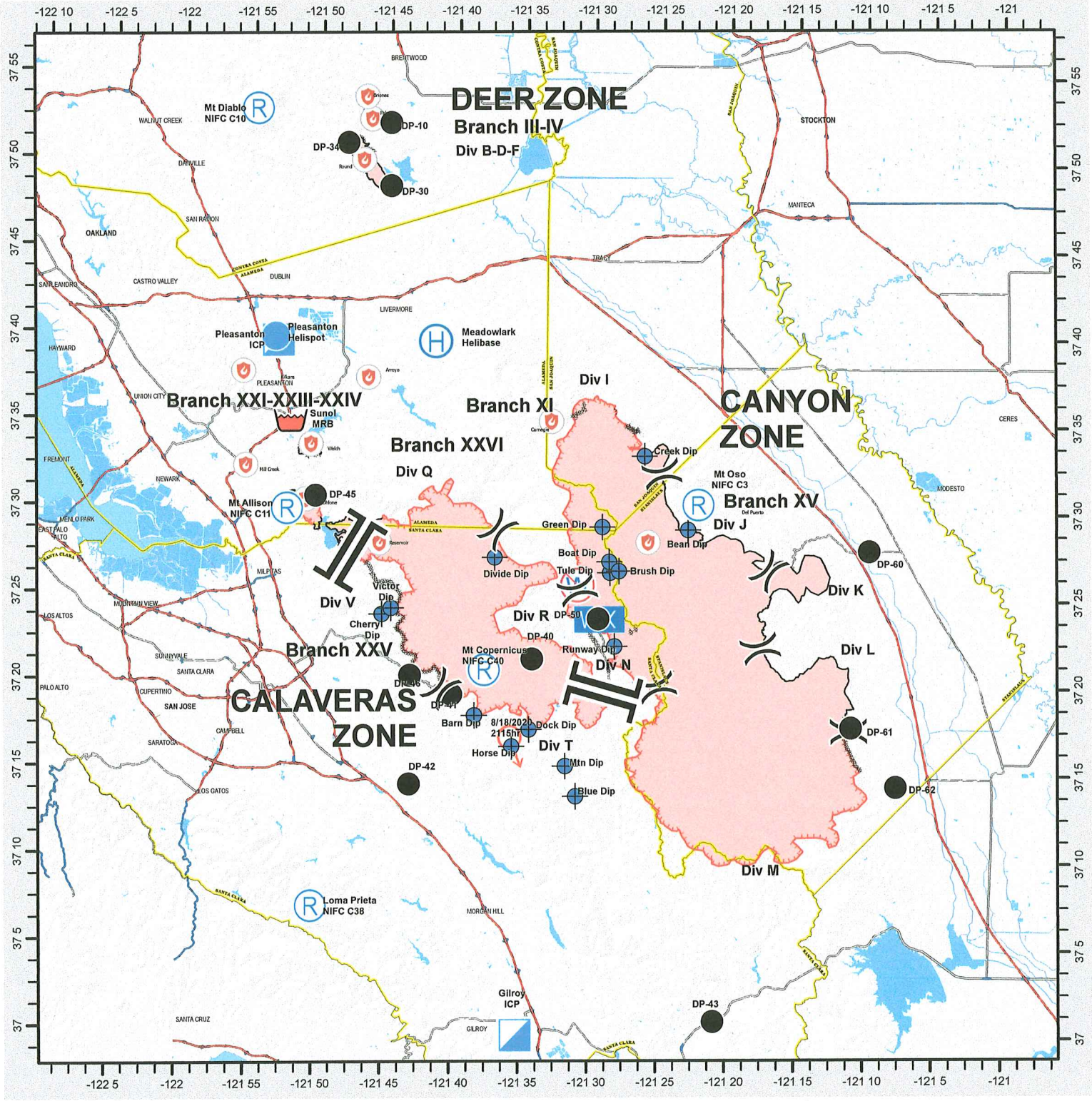
> Desired Date > Select desired map

>Generally, the single most beneficial map to download is the Ops Map



SCU LIGHTNING COMPLEX INCIDENT TRANSPORTATION MAP

CA SCU 005740 - 8/22/2020



<p> Uncontrolled Fire Edge</p> <p> Completed Dozer Line</p> <p> Helibase</p> <p> Helispot</p>	<p> County Boundary</p> <p> Completed Hand Line</p>	<p> Drop Point</p> <p> Dip Site</p> <p> Division Break</p> <p> Fire Point</p> <p> Mobile Weather Unit</p> <p> Repeater</p> <p> Spot Fire</p> <p> Restricted Water Source</p> <p> Mobile Red. Base</p>
---	---	---

CAL FIRE - INCIDENT MANAGEMENT TEAM 6

Established 1994

IMT 6 GISS
8/22/2020
0026 Hours
NAD 83 Teale Albers

DISCLAIMER:
The displayed incident data is approximate and should only be used for informational purposes. The information contained on this map was generated from CAL FIRE data and is not intended to be used for any other purpose and is not necessarily available to mapping, including any mapping applications.

