

# INCIDENT ACTION PLAN

## SCU LIGHTNING COMPLEX

CA-SCU-005740

Sunday



### OPERATIONAL PERIOD

8/23/2020 0700  
to  
8/24/2020 0700



# INCIDENT OBJECTIVES (ICS 202)

<b>1. Incident Name:</b> SCU LIGHTNING COMPLEX	<b>2. Operational Period:</b>	Date From: 8/23/2020 Time From: 0700	Date To: 8/24/2020 Time To: 0700
---	-------------------------------	---	-------------------------------------

**3. Objective(s):**

- Management Objectives**
- Provide for emergency personnel and public safety at all times.
  - Ensure COVID-19 precautions and best practices are met at all times.
  - Protect property, improvements, and infrastructure.
  - Ensure repopulation takes place in a quick, efficient, and effective manner.
  - Ensure coordinated, timely and accurate release of public information.
  - Foster and maintain relationships with all cooperators and stakeholders.
  - Protect economic, natural, cultural and heritage resources.
  - Maintain fiscal accountability and keep costs commensurate with values at risk.

- Control Objectives**
- Canyon Zone and Calaveras Zone**
- Keep the fire North of Hwy 152
  - Keep the fire West of I-5
  - Keep the fire South of Corral Hollow Rd.
  - Keep the fire East of I-680 and Hwy 101
- Deer Zone**
- Keep individual fires within current perimeters.

**General Situational Awareness:**

Steep and rugged terrain, critically dry and receptive fuel beds, active area for fire history and drought stressed trees.

In the COVID-19 environment, high density populations or large groups are particularly at risk. To help protect yourself, your family and to ensure all employees return home safely, make sure to practice social distancing.

Enhanced hygiene (especially handwashing), PPE & monitoring practices help limit the infection rate of first responders.


**5. Site Safety Plan Required?** Yes  No

**Approved Site Safety Plan(s) Located at:**

- 6. Incident Action Plan**
- |   |  |  |   |
|---|--|--|---|
| <input checked="" type="checkbox"/> ICS 203 | <input checked="" type="checkbox"/> ICS 220          | <input checked="" type="checkbox"/> PIO Message          | <input checked="" type="checkbox"/> Peer Support Message        |
| <input checked="" type="checkbox"/> ICS 204 | <input checked="" type="checkbox"/> Facility Maps    | <input checked="" type="checkbox"/> Transportation Map   | <input checked="" type="checkbox"/> Thunderstorm Safety Message |
| <input checked="" type="checkbox"/> ICS 205 | <input checked="" type="checkbox"/> Weather Forecast | <input checked="" type="checkbox"/> COVID Daily Check    | <input type="checkbox"/>  |
| <input checked="" type="checkbox"/> ICS 206 | <input checked="" type="checkbox"/> Fire Behavior    | <input checked="" type="checkbox"/> Finance Message      | <input type="checkbox"/>  |
| <input checked="" type="checkbox"/> ICS 208 | <input checked="" type="checkbox"/> Training Message | <input checked="" type="checkbox"/> Shift Ticket Example | <input checked="" type="checkbox"/> ICS 214                     |

<b>7. Prepared By:</b> Gabe Garcia	Position/Title: PSC1	Signature:
<b>8. Approved by Incident Commander:</b>	Jeff Veik	Signature:

## ORGANIZATION ASSIGNMENT LIST (ICS 203)

<b>1. Incident Name:</b> SCU LIGHTNING COMPLEX		<b>2. Operational Period: Date From:</b> 8/23/2020 Time From: 0700		<b>Date To:</b> 8/24/2020 <b>Time To:</b> 0700	
<b>3. Incident Commander(s) and Command Staff:</b>			<b>7. Operation Section:</b>		
IC/UC's J.Veik		Operations S. Corn			
Deputy M. Blankenheim / D. Martin (T)		Deputy Operations T. Ernst S.Lane (T)			
Safety Officer J. Buchmeier / J. Novak (T)		Night Ops J. McGough			
Information Officer R. Brocchini / R. Lubben (T)		Staging Area			
Liaison Officer M. Villalpando / J. Kiszka (T)		<b>Zone</b>		<b>Deer</b>	
				<b>B. Giambronie</b>	
<b>4. Agency/Organization Representatives:</b>			<b>Branch</b>		<b>III/IV</b>
Alameda County SO Paul Liskey		Division/Group		B / D / F	
PG&E Pam Perdue		<b>Zone</b>		<b>Canyon</b>	
Contra Costa County SO Rich Kovar		<b>Branch</b>		<b>XV</b>	
Santa Clara County OEM Dana Reed		Division/Group		I J. Beeson (T)	
State Parks Wes Gray		Division/Group		J M. Barnes	
San Joaquin County OES Shellie Lima		Division/Group		K / L A. Anastasi	
Stanislaus County SO Richard Murdock		Division/Group		M W. Barteau	
Stanislaus County OES Aaron Wilson		Division/Group		N R. Engler	
Stanislaus County Fire Eric Klevmyr		Division/Group		Contingency M. Milojevich	
CCC Shawn Fry		<b>Zone</b>		<b>Calaveras</b>	
Santa Clara County SO Thea Lera		<b>Branch</b>		<b>XXI / XXIII / XXIV</b>	
TID Jason Hicks		<b>Branch</b>		<b>XXV</b>	
				<b>M. Martinez (T) (12)</b>	
San Francisco Water Rick Duffey		Division/Group		T A. Hernandez	
CALOES Jim Linn		Division/Group		V Z. Main (T)	
East Bay Regional Park Brian Cordeiro		<b>Branch</b>		<b>XXVI</b>	
Alameda County FD Eric Moore		Division/Group		Q D. Esades (T)	
Livermore-Pleasanton Jeff Peters (FIRE)		Division/Group		R M. Morganstern (T)	
San Benito County E.Taylor (Sheriff) K.Mangano (EOC)		Division/Group		J. Salazar	
Merced Co Sheriff Ray Frastad		Division/Group			
CAL OES Fire John Salvate		Division/Group		<b>Suppression Repair</b> E. Orre	
<b>5. Planning Section:</b>			Division/Group		
Chief G. Garcia		Division/Group			
Deputy A. Mitchell / S. Sherwood (T)		Division/Group			
Resource Unit J. Anderson / D. Scheurich J. Heald (T)		<b>Branch</b>			
Situation Unit N. Wallingford / R. Broomfield (T)		Division/Group			
Documentation Unit M. Schaeffer		Division/Group			
Demobilization Unit J. Worden / M. Schaeffer		Division/Group			
GISS T. Knecht		Division/Group			
FBAN S. Volmer		<b>Air Operations Branch</b>		<b>Director: B. Kremensky</b>	
IMET R. Walbrun		Air Support Group Supervisor		P. Mateer	
Training Tech Spec S. Vargas / I. Crosslay (T)		Air Tactical Group Supervisor			
<b>6. Logistics Section</b>			Helibase Manager		R. Johnson / L. Kalfsbeek (T)
Chief S. Dohman					
Deputy Chief J. Warden		<b>8. Finance/Administration Section:</b>			
Supply Unit P. Lee		Chief		G. Belk	
Facilities Unit D. Zumkeller		Deputy Chief		R. Browne	
Ground Support Unit J. Luckenbach		Time Unit		J. Navarro	
Communications Unit J. Brooks		Procurement Unit		J. Andrade	
Medical Unit J. Segura / R. Beeson (T)		Comp/Claims Unit		B. Stirton	
Motel Unit B. Brewer		Cost Unit		J. Tapia	
<b>Prepared By: Name:</b> S. Sherwood		<b>Position/Title:</b> PSC1		<b>Signature:</b> 	
<b>ICS 203</b>		<b>Date/Time:</b> 8/22/2020 2300 hours			



## SCU Lightning Complex Fire Weather Forecast



FORECAST NO: 5

NAME OF FIRE: SCU Lightning Complex

PREDICTION FOR: 0700 Sun-0700 Monday

UNIT: CALFIRE Santa Clara

SHIFT DATE: Aug 23<sup>rd</sup>-Aug 24<sup>th</sup>

SIGNED: *Ryan Walbrun*

TIME AND DATE

FORECAST ISSUED: 2000 Aug 22<sup>nd</sup>

Incident Meteorologist-Ryan Walbrun

---

*...Red Flag Warning for Dry Lightning and Gusty Outflow Winds...*

**WEATHER DISCUSSION:** Red Flag Warning for dry lightning and gusty outflow winds will be in effect through the operational period. A first band of moisture will head south to north in the morning with only a slight chance of isolated thunderstorms. The day will start out very dry in the hills with low humidity values after a very active night of burning across much of the Canyon Fire. Conditions will be hot and dry this afternoon with smoke and increasing mid and high level clouds signaling a change as monsoon moisture surges northward. At this time the best chance of thunderstorms is forecast from the late afternoon/evening hours and then overnight into Monday morning. Dry lightning strikes will of course lead to possible new ignitions within the complex and throughout the Unit with new IA likely. **The biggest life safety threat will be from gusty outflow boundaries where gusts from 40-60 mph will be possible. These winds will be gusty and erratic pushing fire in unpredictable ways towards untested or open containment lines. If you see virga that is a Watch Out for strong and gusty winds!**

---

### **WEATHER FORECAST FOR SUNDAY:**

**WEATHER:** Slight chance of a thunderstorm through the day but best chance in the afternoon. Otherwise increasing clouds with smoke and haze.

**TEMPERATURES:** Highs 88-95 (little change from yesterday)

**HUMIDITY:** 17-24% (little change)

#### **20 FT WINDS:**

Ridgetop: Southwest 5-10 mph afternoon gusts 15 mph (gusty and erratic near any t-storms)

Slopes : Upslope/Upcanyon 3-8 mph

**STABILITY/INVERSION:** Moderate morning inversion breaking up by 1100.

---

### **WEATHER FORECAST FOR SUNDAY NIGHT:**

**WEATHER:** Chance of dry thunderstorms with gusty outflow winds through the night.

**TEMPERATURES:** Lows 65-75, warmest above 1000 feet.

**HUMIDITY RECOVERY:** 35-45% but locally 25% hills of the Canyon Fire above 1500 feet.

**20 FT WINDS:** Ridgetop: Southwest winds 5-10 mph evening gusts 15 mph.

**Gusty and erratic wind gusts from 40-60 mph possible near any t-storms.**


Slopes : Downcanyon 2-5 mph.

**STABILITY/INVERSION:** Unstable airmass over the region. Active and wind driven fire possible all night.

---

**SAFETY INFORMATION:** Is LCES in place? Use your IRPG for tailgate sessions. Have a plan in place ahead of time, expecting thunderstorms to develop. Ready for IA fires? Where is your escape route? Do you have good Comms? Clone your Radio!

# FIRE BEHAVIOR FORECAST

FORECAST NUMBER: 6	TYPE OF FIRE: WILDFIRE
FIRE NAME: SCU LIGHTNING COMPLEX CASCU-005740	OPERATIONAL PERIOD: 8/23-8/24/20 0700-0700
DATE ISSUED: 8/22/20	TIME ISSUED: 2000
UNIT: SANTA CLARA	SIGNED:  Typed/printed: Stephen Volmer FBAN

## INPUTS

**WEATHER SUMMARY:** \*\*RED FLAG WARNING in effect from 8/23 @ 0500 to 8/24 @ 1700\*\*

Outflow winds from thunderstorms could exceed 50mph on all areas of the complex during the shift. Temperatures will be in the mid 90's with Southwest winds 5-10mph gusting to 20 across the ridge tops. Daytime humidity will be in the mid 20's across the complex. The strongest winds will enter the area Sunday night and last until sunrise Monday. Night time humidity will vary greatly between the zones, and elevations. Expect lower humidity to occur above 1,000' elv across the complex after midnight, with little decrease in fire activity, allowing lightning strikes and spot fires to become well established.

## OUTPUTS

### FIRE BEHAVIOR

FUEL MODEL	RATE OF SPREAD FT/MIN	FLAME LENGTH FT	SPOTTING DISTANCE	PROBABILITY OF IGNITION
GRASS	72-114	7	.30 mi	89%
BRUSH	66-102	21	.60 mi	89%
OAK OVERSTORY	15-25	12	.40 mi	89%

### GENERAL:

Gusty and erratic outflow winds will test all control lines in the complex area, as well as cause fire weakened timber and branches to release without warning. Expect critical rates of spread when fuels, wind, and topography are all in alignment. Thunderstorm passage will have the ability to throw embers great distances into the very receptive fuel bed, igniting new fires. Lightning strikes, new starts, and spot fires will come to life quickly. Poor overnight humidity recovery will lead to active fire behavior thought the evening.

**\*\*\*Values above are valid for any new starts in the area\*\*\***

### SPECIFIC:

- Identify SAFETY ZONES and ESCAPE ROUTES early before they are needed.
- Humidity values will decrease between midnight and sunrise to the low teens.
- STRONG GUSTY outflow winds will cause erratic fire behavior and spread in all direction.

**AIR OPERATIONS:** Smoke and haze will fill the area producing limited visibility to the Southeast. Expect gusty conditions over the ridgetops in the afternoon. Transport winds SW 10mph. Air resources might not be available for your tactical plans due to visibility, weather, new fires, or being timed out.

Sunset 19:47 Sunrise 06:28

## SAFETY

- Review IRPG page 21 for Thunder Storm Safety
- The best safety zone is into good clean black.
- Fire weakened timber and branches will release due to winds. Roadways will become blocked easily.

### SAFETY MESSAGE/PLAN (ICS 208)

<b>1. Incident Name:</b> SCU LIGHTNING COMPLEX	<b>2. Operational Period:</b>	Date From: 8/23/20	Date To: 8/24/20
		Time From: 0700	Time To: 0700

**COVID-19:** Remain diligent with masks, hygiene, and frequent hand washing; wipe down common surfaces on fire apparatus/vehicles.

**OPERATIONAL LEADERSHIP:** (IRPG Pg. vi) Motivation is the key to accomplishing difficult tasks under dangerous and stressful shifts. Provide purpose and direction while providing breaks to accomplish rest and hydration.

**HYDRATION:** Assure we all maintain nutrition and fluids before, during, and after work cycles; rest and seek shade or air-conditioned cab whenever possible.

**FATIGUE:** A factor to consider as the fire siege continues; keep members informed; acknowledge their accomplishment and hard-work, provide rest often while monitoring fire conditions.

**CAUTION:** The longer we go, the more complacency wants to set in, take time to assess and execute all planned actions safely. **WATCH** for Snags!

**HEADS UP:** Keep informed weather conditions and how it will affect your work zone; forecast all operations and account for lag time on work rates. Utilize a Risk Matrix and establish Hazard Controls.

**ACCEPTING ASSIGNMENTS:** Always apply the **P.A.C.E.** process, use depth in planning your operations with tactical decision making and tasks being performed:

**Primary Plan** Follow ICS 204 expectations when implementing work plans.

**Alternate Plan** Have a decision point to adjust and meet our goals safely with changing conditions.

**Contingency Plan** A forecasted plan at a decision point emphasizing firefighter safety with operation.

**Emergency Plan** TRA's (Temporary Refuge Area) & **Safety Zones**; forecast the "what if" practice the emergency reporting procedure on the ICS 206.

4. Site Safety Plan Required?  No

Approved Site Safety Plan(s) Located At:

5. Prepared By: J. Buchmeier / J. Novak (T)


Position/Title: SOF1

Signature: 

ICS 208

Date/Time: 8/22/2020 / 2030

## INCIDENT ACTION PLAN SAFETY ANALYSIS (ICS 215A)

<b>1. Incident Name:</b> SCU LIGHTNING COMPLEX	<b>2. Operational Period:</b>	Date From: 8/23/20 Time From: 0700	Date To: 8/24/20 Time To: 0700
Incident Area	Hazard/Risks	Mitigations	
ALL	COMPLACENCY	Don't underestimate the task at hand. Wear full PPE while on the line. Don't get caught off guard. Do you have the right radio clone.	
ALL	COVID 19	Adhere to local, state, federal, and CDC health guidelines. Maintain social distancing when applicable. Wear a mask for yourself and others. Report any symptoms immediately to a supervisor.	
ALL	FIRE BEHAVIOR	Know your LCES and maintain Situational Awareness. Use experienced Look Outs. Adhere to the downhill line construction guidelines. Monitor weather for changes in the wind, temp, and RH during the shift. Have a contingency plan with established decision points and Safety Zones.	
ALL	FATIGUE/HEAT/DEHYDRATION	Be alert for signs of fatigue and take breaks as necessary on hot dry days. Monitor incoming resources for level of fatigue. Drink water before, during, and after shifts, up to 1.5 gal. per shift. Be alert for signs of heat stress in yourself and others; use the buddy system. Eat small meals often and when possible. Find shade when you can. Drink electrolyte drinks at a 2:1 water/sport drink ratio.	
ALL	STEEP TERRAIN/ROLLING DEBRIS	Watch your footing while hiking in steep terrain. Be careful of loose rolling debris. Maintain Situational Awareness.	
ALL	LINE CONSTRUCTION	Conduct thorough briefing for all personnel (inside rear IRPG). Ensure LCES in place prior to engagement. Establish adequate Safety Zones. Use Downhill Line Checklist. Follow "Look Up, Look Down, Look All Around" procedures. Utilize Risk Management Process...reference the IRPG.	
ALL	HAZARD TREES	Identify and isolate the area to provide for the safety of others. Flag and make proper notifications. Do not fall trees out of your certification level.	
ALL	DRIVING HAZARDS	<b>SLOW DOWN!</b> Long travel times to the line, stay alert. Drive defensively! Expect the unexpected around every curve. Drive with headlights and seatbelts on. Narrow roads with limited passing room. Coordinate your movements on one-lane roads, follow traffic plans.	
ALL	AIRCRAFT OPERATIONS	Monitor air-to-ground frequency, they are your eyes in the sky. Use air-to-ground frequency to communicate with aircraft. Use clear, concise statements when directing aircraft. Only utilize aircraft to insert personnel on the line when necessary.	
ALL	PERFORM TAIL GATE SAFETY	Everyone should be briefed on the conditions and circumstances regarding the fire and their assignments per the IRPG.	
ALL	DOZER SAFETY	Watch for rolling material. Monitor safe working distances. Avoid working below dozer. Utilize communication with the operator (radio or hand signals).	
<b>5. Prepared By:</b> Joe Buchmeier		Position/Title: SOF1	
ICS 215A		Date/Time: 8/22/2020 / 2030	
		Signature: 	

# SCU LIGHTNING COMPLEX

## THUNDERSTORM SAFETY

Thunderstorms cause significant hazards to our personnel, including downbursts that can cause a change in winds and produce extreme fire behavior and lightning. When thunderstorm development is likely, lookouts should be posted and aware of signs of a developing storm. For example, a sudden reversal in wind direction, a noticeable rise in wind speed, and a sharp drop in temperature may note the mature stage of a storm. Heavy rain, hail and lightning occur only in the mature stage of a thunderstorm. During a storm, use the following guidelines:

- Do not lie down.
  - The best position is sitting on your pack /web gear or crouching with feet close together.
  - Avoid sitting directly on the ground, if possible; but, if necessary, keep feet and butt close together.
  - Avoid grouping together. Keep a minimum of 15 feet between people when possible.
  - "Stay out of dry creek beds" is correct for flash floods, but has nothing to do with lightning.
  - Handheld radios (with short rubber antennas) or cell phones are safe to use. Communication is vital to crew safety. Do not use land line radios or radios with elevated antennas.
  - Wide, open spaces are better than trees or clumps of trees in the vicinity. Ridge tops, etc., should be avoided.
  - If you feel the hair on your arms or head "stand up," there is a high probability of a strike in the vicinity. Crouch or sit on a pack.
  - Put down all tools.
  - Take shelter in vehicles if possible.
- 
- **Reference Thunderstorm Safety in the IRPG (2018 pg. 21)**

References:  
Incident Response Pocket Guide  
Interagency Standards for Fire and Fire Aviation Operations

SOF1 Joe Buchmeier

SOF1 T Jason Novak







# CAL FIRE / INCIDENT MANAGEMENT TEAM 6

## COVID-19 DAILY HEALTH CHECK SCREENING ALGORITHM



### EACH WORKDAY WILL BEGIN WITH THE FOLLOWING:

Temperature recorded  
Employee Screening Questionnaire

#### TEMPERATURE RECORDED

- Fever YES/NO? \*Fever is considered  $> 100.4^*$
- #### EMPLOYEE SCREENING QUESTIONNAIRE
- Are you feeling ill/feverish?
  - Are you having chills?
  - Do you have new or worsening SOB?
  - Do you have a new or worsening cough?
  - Do you have a new or prolonged sore throat?

**No** Fever and **No** answered to all  
Employee Screening Questionnaire

*Continue with Daily Operations*

**Yes** Fever OR **Yes** answered to any of the Employee  
Screening Questionnaire

- Wash Hands, Don Mask and Isolate from other employ-ees. Maintain a distance of  $> 6$  feet.
- Notify the Company Officer and/or Strike Team Leader.
- Notify Medical Unit Leader
- Refer employee to appropriate healthcare provider for evaluation and treatment.
- Disinfect "High-touch" surface areas.

### REMINDERS TO ALL EMPLOYEES

- ◇ Self-Monitor yourself while you are on and off the line. If you experience any flu-like symptoms, COVID-19 symptoms, or any Respiratory illness symptoms contact your Company Officer and or Strike Team Leader.
- ◇ Maintain proper hand hygiene. Wash hands with soap and water for 20 seconds. Utilize hand sanitizer often. Do not shake hands, touch, or hug others.
- ◇ Cover coughs or sneezes (if not masked). Cloth Masks should be exchanged and or washed daily.
- ◇ Masks are required when out in the public on non-emergency business.
- ◇ Disinfect high-touch surfaces daily.
- ◇ Practice social distancing ( $> 6$  feet) at meal times, dormitories, in-person meeting, or while in public.



# CAL FIRE / Incident Management Team 6

## COVID-19 Response Algorithm



### Employee Response Action Plan

#### COVID-19 Positive Test or COVID-19 Positive Clinical Symptoms Presentation

- ***COVID 19 Symptoms: Cough, SOB, Fever or afebrile, Chills, Muscle Pain, Sore throat, Loss of taste/smell***
- Employee informs Company Officer and Strike Team Leader of presumed/confirmed COVID-19 symptoms.
- Employee advised to seek evaluation by Medical Unit and CAL MAT or base camp medical unit.
- Crew initiates cleaning measures. Mask, safety glasses, gloves worn. (If needed, LOGS will assist)
- Medical Unit to notified IC, Liaison, Safety and Logistics ASAP. Medical Unit will notify COVID-19 Public Health Officer and determine need for testing and locations.



### Incident Action Plan

- Company Officer / Strike Team Leader notified of personnel with COVID-19 positive test or symptom.
- Medical Unit evaluates individual(s) and need for care and evaluation.
- IC, Liaison, Safety and Logistics notification made to determine course of incident evaluation and response.
- Line Chief, Agency Administrator, and Region Office updated upon notification



### Facilities Response

- Medical and Safety notified
- Incident Notification
- Disinfection plan initiated.
- Resource Status Evaluated




### Medical Evaluation & Contact Tracing

- Personnel interviewed by Medical Unit . List of Positive contacts made in the last 5 days acquired. All Exposed are required to wear surgical mask, self monitor for Fever/Resp symptoms for up to 14 days (exposed personnel are subject to COVID-19 testing)
- Home Unit / Department utilized and retrospective tracking of Positive COVID-19 personnel inter-actions are identified within the last 5 days.
- Home Unit / Department updated by Company Officer / Strike Team Leader.
- Public Health Department is contacted and updated by IC or Designated Representative.
- Positive COVID-19 Employees w/symptoms will need to be evaluated by Health Department conducting testing, prior to returning to assignment.
- Positive COVID-19 Employees w/o symptoms may be required to be evaluated and resource status will be reviewed prior to returning to assignment.



# ASSIGNMENT LIST (ICS 204 WF)

CONTROLLED UNCLASSIFIED  
INFORMATION//BASIC

<b>1. Incident Name:</b>		<b>2. Operational Period:</b>				<b>3. Branch</b>		<b>Division</b>	
<b>SCU LIGHTNING COMPLEX CANYON ZONE</b>		Date From: 08/23/20		Date To: 08/24/20		<b>XV</b>		<b>I</b>	
		Time From: 0700		Time To: 0700		Page 1 of 1		India	
<b>4. Operations Personnel:</b>									
Operations Section Chief: <b>S. Corn</b>					Night Ops: <b>J. McGough</b>				
Branch Director:					Branch Safety:				
Division/Group Supervisor: <b>J. Beeson (T)</b>					Air Attack:				
<b>5. Resources Assigned:</b>			<b>** Resources Below in Bold are 12 Hour **</b>						
Resource Identifier	ALS	LWD	Leader	Personnel	Request #	Hours	Reporting Location		
STC SKU 9260			L. Turman	20	E-359	0700-0700	ICP		
ENG3 TCU 4452			J. Tompkins	3	E-345	0700-0700	ICP		
ENG6 5680			B. Adams	3	E-379	0700-0700	ICP		
STG LMU 9223G			C. Bonner	35	C-30	0700-0700	ICP		
DOZ PVT E-1			J. Worrell	2	E-1	0700-0700	ICP		
DOZ PVT E-212			T. Stevenson	2	E-212	0700-0700	ICP		
DOZ PVT E-214			B. Welch	2	E-214	0700-0700	ICP		
DOZ PVT E-217			R. Dudbah	2	E-217	0700-0700	ICP		
W/T PVT E-5			K. Merwin	2	E-5	0700-0700	ICP		
W/T PVT E-227			M. Lemus	2	E-227	0700-0700	ICP		
W/T PVT E-231			J. Thoene	2	E-231	0700-0700	ICP		
W/T PVT E-237			R. Webb	2	E-237	0700-0700	ICP		
W/T PVT E-238			T. Waltjen	2	E-238	0700-0700	ICP		
<b>REMS MODULE 53</b>			<b>R. Smith</b>	4	<b>O-377</b>	<b>0700-1900</b>	<b>ICP</b>		
FEMP KENNEDY			D. Kennedy	1	O-121	0700-0700	ICP		
FEMP KNABE			T. Knabe	1	O-192	0700-0700	ICP		
<b>6. Work Assignments:</b>									
Construct and/ or improve Fire line.									
<b>7. Special Instructions:</b>									
<b>8. Communications</b>									
Name	Ch	Function	Rx Freq	Rx Tone	Tx Freq	Tx Tone	Notes		
NIFC C3	2	COMMAND	170.4250N	131.8 (T3)	168.0750N	131.8 (T3)	MT OSO LINKED W/CMD 10, 11, 38, & 40		
VTAC14	8	TACTICAL	159.4725N	156.7 (T6)	159.4725N	156.7 (T6)	BRANCH XV		
CDF T20	14	AIR TO GROUND	159.3750N	192.8 (T16)	159.3750N	192.8 (T16)			
CALCORD	15	MEDICAL	156.0750N	156.7 (T6)	156.0750N	156.7 (T6)			
GUARD 21	16	EMERGENCY	168.6250N		168.6250N	110.9 (T1)	AIR GUARD		
<b>9. Prepared by: Name:</b>									
Jamie Heald			RESL			Signature: 			
<b>ICS 204</b>									
Date/Time: 8/22/2020				2200		Personnel Count: 85			



# ASSIGNMENT LIST (ICS 204 WF)

CONTROLLED UNCLASSIFIED  
INFORMATION//BASIC

<b>1. Incident Name:</b>	<b>2. Operational Period:</b>	<b>3. Branch</b>	<b>Division</b>
<b>SCU LIGHTNING COMPLEX CANYON ZONE</b>	Date From: 08/23/20      Date To: 08/24/20 Time From: 0700              Time To: 0700	<b>XV</b>	<b>K / L</b>
<b>4. Operations Personnel:</b>		<b>Page 1 of 1</b>	

Operations Section Chief: <b>S. Corn</b>	Night Ops: <b>J. McGough</b>
Branch Director:	Branch Safety:
Division/Group Supervisor: <b>A. Anastasi</b>	Air Attack:

5. Resources Assigned:	** Resources Below in Bold are 12 Hour **						
Resource Identifier	ALS	LWD	Leader	Personnel	Request #	Hours	Reporting Location
ENG3 BEU 4666			D. Forbes	4	E-355	0700-0700	ICP
ENG3 LNU 1465			J. Freyer	3	E-382	0700-0700	ICP
W/T PVT E-244			C. Skinner	2	E-244	0700-0700	ICP

**6. Work Assignments:**  
Construct and/ or improve Fire line.

**7. Special Instructions:**  
NIFC CMD 10 will be OOS while it is moved to Pacheco Peak. Comms will advise once in service at which point NIFC CMD 10 may provide better coverage in some areas.

8. Communications							
Name	Ch	Function	Rx Freq	Rx Tone	Tx Freq	Tx Tone	Notes
NIFC C3	2	COMMAND	170.4250N	131.8 (T3)	168.0750N	131.8 (T3)	MT OSO LINKED W/CMD 10, 11, 38, & 40
VFIRE 23	9	TACTICAL	154.2950N	156.7 (T6)	154.2950N	156.7 (T6)	
CDF T20	14	AIR TO GROUND	159.3750N	192.8 (T16)	159.3750N	192.8 (T16)	
CALCORD	15	MEDICAL	156.0750N	156.7 (T6)	156.0750N	156.7 (T6)	
GUARD 21	16	EMERGENCY	168.6250N		168.6250N	110.9 (T1)	AIR GUARD

**9. Prepared by: Name:** Jamie Heald      RESL      Signature:

**ICS 204**      Date/Time: 8/22/2020 2200      Personnel Count: 9

# ASSIGNMENT LIST (ICS 204 WF)

CONTROLLED UNCLASSIFIED  
INFORMATION/BASIC

<b>1. Incident Name:</b>	<b>2. Operational Period:</b>	<b>3. Branch</b>	<b>Division</b>
<b>SCU LIGHTNING COMPLEX CANYON ZONE</b>	Date From: 08/23/20    Date To: 08/24/20 Time From: 0700    Time To: 0700	<b>XV</b>	<b>M</b>
		Page 1 of 1	Mike

<b>4. Operations Personnel:</b>			
Operations Section Chief: <b>S. Corn</b>	Night Ops: <b>J. McGough</b>		
Branch Director:	Branch Safety:		
Division/Group Supervisor: <b>W. Barteau</b>	Air Attack:		

<b>5. Resources Assigned:</b>		<b>** Resources Below in Bold are 12 Hour **</b>					
Resource Identifier	ALS	LWD	Leader	Personnel	Request #	Hours	Reporting Location
STC 9242C						0700-0700	ICP
<b>TF PVT THUNDER BOLT</b>			<b>S. Gonzales</b>	16	<b>E-363</b>	<b>0700-1900</b>	<b>ICP</b>
TF IDAHO 1			J. Cook	17	E-374	0700-0700	ICP
STH BTU 9213H			J. Wells	31	C-3	0700-0700	ICP
DOZ SCU 1644			S. Mcvay	4	E-350	0700-0700	ICP
DOZ SCU 1641			J. Logan	4	E-351	0700-0700	ICP
DOZ PVT E-210			A. Bushey	2	E-210	0700-0700	ICP
DOZ PVT E-216			S. Maynard	2	E-216	0700-0700	ICP
DOZ PVT E-218			J. Wyatt	2	E-218	0700-0700	ICP
DOZ PVT E-219			B. Hendrix	2	E-219	0700-0700	ICP
W/T SCC 68			M. Gil	2	E-128	0700-0700	ICP
W/T PVT E-224			N. Kusalich	2	E-224	0700-0700	ICP
W/T PVT E-240			M. Sanchez	2	E-240	0700-0700	ICP
W/T PVT E-241			A. Harris	2	E-241	0700-0700	ICP
W/T PVT E-242			J. Zulu	2	E-242	0700-0700	ICP
W/T PVT E-243			J. Mgary	2	E-243	0700-0700	ICP
W/T PVT E-245			D. Harms	2	E-245	0700-0700	ICP
<b>W/T PVT E-251</b>			<b>S. Fourby</b>	1	<b>E-251</b>	<b>0700-1900</b>	<b>ICP</b>

**6. Work Assignments:**  
Construct and/ or improve Fire line.

**7. Special Instructions:**  
NIFC CMD 10 will be OOS while it is moved to Pacheco Peak. Comms will advise once in service at which point NIFC CMD 10 may provide better coverage in some areas.

<b>8. Communications</b>							
Name	Ch	Function	Rx Freq	Rx Tone	Tx Freq	Tx Tone	Notes
NIFC C40	6	COMMAND	173.7500N	131.8 (T3)	163.8250N	131.8 (T3)	COPERNICUS PK LINKED W/CMD 3, 10, 11, & 38
VFIRE 24	10	TACTICAL	154.2725N	156.7 (T6)	154.2725N	156.7 (T6)	BRANCH XV
CDF T20	14	AIR TO GROUND	159.3750N	192.8 (T16)	159.3750N	192.8 (T16)	
CALCORD	15	MEDICAL	156.0750N	156.7 (T6)	156.0750N	156.7 (T6)	
GUARD 21	16	EMERGENCY	168.6250N		168.6250N	110.9 (T1)	AIR GUARD

**9. Prepared by: Name:**                      Jamie Heald                      RESL                      Signature:

**ICS 204**                      Date/Time: 8/22/2020    2200                      Personnel Count: 95









# ASSIGNMENT LIST (ICS 204 WF)

CONTROLLED UNCLASSIFIED  
INFORMATION//BASIC

<b>1. Incident Name:</b>	<b>2. Operational Period:</b>	<b>3. Branch</b>	<b>Division</b>
<b>SCU LIGHTNING COMPLEX CALAVERAS ZONE</b>	Date From: 08/23/20      Date To: 08/24/20 Time From: 0700              Time To: 0700	<b>XXV</b>	<b>T</b>


<b>4. Operations Personnel:</b>		Page 1 of 1	Tango
Operations Section Chief: <b>S. Corn</b>	Night Ops: <b>J. McGough</b>		
Branch Director:	Branch Safety:		
Division/Group Supervisor: <b>A. Hernandez</b>	Air Attack:		

<b>5. Resources Assigned:</b>		** Resources Below in Bold are 12 Hour **					
Resource Identifier	ALS	LWD	Leader	Personnel	Request #	Hours	Reporting Location
STC AEU 9271C			B. Pooley	17	E-13	0700-0700	ICP
STC SHU 9241C			J. Capen	17	E-358	0700-0700	ICP
STG BTU 9212G			K. Finkeneller	33	C-89	0700-0700	ICP
DOZ LNU 1442			N. Derickson	3	E-3	0700-0700	ICP
DOZ LNU 1449			B. Pots	3	E-366	0700-0700	ICP
DOZ 1445						0700-0700	ICP
DOZ SHU 2440			C. Rauch	1	E-367	0700-0700	ICP
DOZ SHU 2444			K. Ensley	3	E-368	0700-0700	ICP
DOZ MRN 1540			J. Terstegge	4	E-14	0700-0700	ICP
DOZ PVT E-213			A. Daniels	1	E-213	0700-0700	ICP
DOZ PVT E-215			L. Arias	3	E-215	0700-0700	ICP
DOZ PVT E-220			B. Dunn	1	E-220	0700-0700	ICP
DOZ PVT E-222			S. Mahood	2	E-222	0700-0700	ICP
DOZ PVT E-223			L. Gill	2	E-223	0700-0700	ICP
<b>W/T PVT E-6</b>			<b>B. Indiher</b>	2	<b>E-6</b>	<b>0700-1900</b>	<b>ICP</b>
FEMP CONNER			J. Conner	1	O-194	0700-0700	ICP
FEMP Duggan			B. Duggan	1	O-199	0700-0700	ICP
FEMT ALBRECHT			K. Albrecht	1	O-203	0700-0700	ICP

**6. Work Assignments:**  
 Construct and/ or improve Fire line.  
 Assess need for contingency lines.

**7. Special Instructions:**

<b>8. Communications</b>							
Name	Ch	Function	Rx Freq	Rx Tone	Tx Freq	Tx Tone	Notes
NIFC C40	6	COMMAND	173.7500N	131.8 (T3)	163.8250N	131.8 (T3)	COPERNICUS PK LINKED W/CMD 3, 10, 11, & 38
VTAC13	11	TACTICAL	158.7375N	156.7 (T6)	158.7375N	156.7 (T6)	CANYON ZONE BR XXV
CDF T20	14	AIR TO GROUND	159.3750N	192.8 (T16)	159.3750N	192.8 (T16)	
CALCORD	15	MEDICAL	156.0750N	156.7 (T6)	156.0750N	156.7 (T6)	
GUARD 21	16	EMERGENCY	168.6250N		168.6250N	110.9 (T1)	AIR GUARD

**9. Prepared by: Name:** Jamie Heald      RESL      Signature: 

**ICS 204**      Date/Time: 8/22/2020 2200      Personnel Count: 95



# ASSIGNMENT LIST (ICS 204 WF)

CONTROLLED UNCLASSIFIED  
INFORMATION//BASIC

<b>1. Incident Name:</b>	<b>2. Operational Period:</b>	<b>3. Branch</b>	<b>Division</b>
<b>SCU LIGHTNING COMPLEX CALAVERAS ZONE</b>	Date From: 08/23/20    Date To: 08/24/20 Time From: 0700    Time To: 0700	<b>XXVI</b>	<b>Q</b>
<b>4. Operations Personnel:</b>		Page 1 of 1	Quebec

Operations Section Chief: <b>S. Corn</b>	Night Ops: <b>J. McGough</b>
Branch Director: <b>D. Esades (T)</b>	Branch Safety:
Division/Group Supervisor: <b>M. Morganstern (T)</b>	Air Attack:

5. Resources Assigned:	** Resources Below in Bold are 12 Hour **						
Resource Identifier	ALS	LWD	Leader	Personnel	Request #	Hours	Reporting Location
STC SCU 9161C			R. West	16	E-170	0700-0700	ICP
STC SCU 9160C			S. Blythe	21	E-169	0700-0700	ICP
T/F San Joaquin 4810			C. Allen	20	E-425	0700-0700	ICP
<b>CRW T2 C-17</b>			<b>C. Hubbard</b>	20	<b>C-17</b>	<b>0700-1900</b>	<b>ICP</b>
STL LMU 9226 L			T. Mckinney	5	E-333	0700-0700	ICP
STL HUU 9128L			T. Meyers	9	E-365	0700-0700	ICP
STL TGU 9250L			L. Thomas	7	E-54	0700-0700	ICP
<b>DOZ SKU 2643</b>			<b>L. Tupman</b>	1	<b>E-55</b>	<b>0700-1900</b>	<b>ICP</b>
W/T PVT E-225			S. Debois	2	E-225	0700-0700	ICP
W/T PVT E-226			L. Burton	2	E-226	0700-0700	ICP
<b>W/T PVT E-229</b>			<b>D. Wood</b>	2	<b>E-229</b>	<b>0700-1900</b>	<b>ICP</b>
W/T PVT E-230			D. Hughes	2	E-230	0700-0700	ICP
<b>FALM O-370</b>			<b>B. Toth</b>		<b>O-370</b>	<b>0700-1900</b>	<b>ICP</b>
<b>FALM O-371</b>			<b>T. Davant</b>		<b>O-371</b>	<b>0700-1900</b>	<b>ICP</b>

**6. Work Assignments:**  
 Construct and/ or improve Fire line.  
 Assess need for contingency lines.

**7. Special Instructions:**

8. Communications							
Name	Ch	Function	Rx Freq	Rx Tone	Tx Freq	Tx Tone	Notes
NIFC C11	4	COMMAND	170.6875N	131.8 (T3)	166.5750N	131.8 (T3)	MT ALLISON LINKED W/CMD 3, 10, 38 & 40
VTAC12	10	TACTICAL	154.4525N	156.7 (T6)	154.4525N	156.7 (T6)	CANYON ZONE BR XXVI
CDF T20	14	AIR TO GROUND	159.3750N	192.8 (T16)	159.3750N	192.8 (T16)	
CALCORD	15	MEDICAL	156.0750N	156.7 (T6)	156.0750N	156.7 (T6)	
GUARD 21	16	EMERGENCY	168.6250N		168.6250N	110.9 (T1)	AIR GUARD

<b>9. Prepared by: Name:</b>	Jamie Heald	RESL	Signature:
<b>ICS 204</b>	Date/Time: 8/22/2020 2200	Personnel Count: 107	



# ASSIGNMENT LIST (ICS 204 WF)

CONTROLLED UNCLASSIFIED  
INFORMATION//BASIC

<b>1. Incident Name:</b>	<b>2. Operational Period:</b>	<b>3. Branch</b>	<b>Division</b>
<b>SCU LIGHTNING COMPLEX</b>	Date From: 08/23/20      Date To: 08/24/20 Time From: 0700              Time To: 0700		<b>Suppression Repair</b>
<b>4. Operations Personnel:</b>		<b>Page 1 of 1</b>	

Operations Section Chief: <b>S. Corn</b>	Night Ops: <b>J. McGough</b>
Branch Director: <b>D. Esades (T)</b>	Branch Safety:
Division/Group Supervisor: <b>E. Orre</b>	Air Attack:

<b>5. Resources Assigned:</b>		<b>** Resources Below in Bold are 12 Hour **</b>					
Resource Identifier	ALS	LWD	Leader	Personnel	Request #	Hours	Reporting Location
<b>THSP O-390</b>			<b>T. Armstrong</b>	<b>1</b>	<b>O-390</b>	<b>0700-1900</b>	<b>ICP</b>

**6. Work Assignments:**  
Identify suppression repair needs.

**7. Special Instructions:**  
NIFC C40 may need to be utilized in Division R.  
Utilize assigned tacticals for the division operating in.

<b>8. Communications</b>							
Name	Ch	Function	Rx Freq	Rx Tone	Tx Freq	Tx Tone	Notes
NIFC C11	4	COMMAND	170.6875N	131.8 (T3)	166.5750N	131.8 (T3)	MT ALLISON LINKED W/CMD 3, 10, 38 & 40
CDF T20	14	AIR TO GROUND	159.3750N	192.8 (T16)	159.3750N	192.8 (T16)	
CALCORD	15	MEDICAL	156.0750N	156.7 (T6)	156.0750N	156.7 (T6)	
GUARD 21	16	EMERGENCY	168.6250N		168.6250N	110.9 (T1)	AIR GUARD

<b>9. Prepared by: Name:</b>	Jamie Heald	RESL	Signature:
<b>ICS 204</b>	Date/Time: 8/22/2020	2200	Personnel Count: 1

### AIR OPERATIONS SUMMARY ICS-220

**Incident Name / Number**  
 SCU LIGHTNING COMPLEX / CA-SCU-005740

**Sunrise** 6:31    **Startup** 7:01    **Cutoff** 19:18    **Sunset** 19:48

**General Remarks, Safety Notes, Hazards, Air Operations Special Equipment, etc.**  
 TRACK ALL DIPSITE LOCATIONS / NUMBER OF DIPS / GALLONS TAKEN.  
 TRACK ALL DROP LOCATIONS / NUMBER OF DROPS / GALLONS DROPPED  
 ALL GPS DATA TO BE COLLECTED IN DEGREES. MINUTES. DECIMAL MINUTES. FORMAT:  
 AVOID Aerial Application of Retardant / Foam / Agent within 300' of Waterways, Bodies of Water, etc.  
 If Retardant / Foam / Agent is Dropped Within These Areas Immediately Notify the AOBDD and Provide the  
 Following Information: Lat / Long, Estimated Number of Gallons and a Map Detailing The Area.

**Time Prepared**  
 1400

**Shutdown**  
 20:18

**Helibase Information**  
 Name Meadowlark  
 Latitude 37 39.679  
 Longitude 121 41.614

**Name** Sunol MRB  
**Latitude** 37 34.99  
**Longitude** 121 52.11  
 (use page 2 if needed)

**Date Prepared**  
 Saturday, August 22, 2020

**Operational Period - Date**  
 Sunday August 23, 2020

**TFR Information**  
**Request #** A-92  
**Polygon:** NM  
**Altitude:** 5,000' MSL  
**Centerpoint:** 37 37.56N 121 48.23 W  
**NOTAMS:** 0/5458  
**Frequency** 133.0250  
<http://tfr.faa.gov/tfr2/list.html>

**Prepared By**  
 B. Kremensky

**Operational Period - Time**  
 0700-2100

**Rescue Ship Information**  
**Day Hoist** Name C-106  
**Night Hoist** G822  
 Phone (408)710-1865 (530)925-0934  
**Make/Model** UH-1H UH-60  
**Location** Alama Helibase Redding Airport  
**Request Procedure for These Aircraft:**  
 Incident Communications  
 See Medical Plan For Additional Info

FAA #	Type	Make/Model	Helibase	Avail	Start	Remarks	FAA #	Type	Make/Model	Helibase	Avail	Start	Remarks
5PJ	I	A-60	Meadowlark	0800	0830	Bucket							
5HT	I	S-64	Meadowlark	0800	0830	Tank							
5AJ	I	CH-47	Meadowlark	0800	0830	Tank							
C-106	II	UH-1H	Meadowlark	0800	0830	Tank							
4TV	III	A-Star	Meadowlark	0800	0830	Helco/Recon/Bucket							
Eagle 7	III	A-Star	Meadowlark	0800	0830	Helco/Recon/Bucket							
3SH	III	206L	Meadowlark	0800	0830	Helco/Recon/Bucket							
11A	III	407	Meadowlark	0800	0830	Helco/Recon/Bucket							

#### HELICOPTERS ( Use page 2 if Needed )

FAA #	Type	Make/Model	Helibase	Avail	Start	Remarks	FAA #	Type	Make/Model	Helibase	Avail	Start	Remarks
COMMAND		163.8250N	131.8000	173.7500N	131.8000	FM							
AIR / GROUND TACTICAL		159.3750	192.8000	159.3750	192.8000	FM							
AIR/AIR ROTARY WING		133.0250		133.0250		AM							
Helco Briefing													
AIR TACTICS		169.2875	110.9	169.2875	110.9	FM							
Air Attack Briefing		135.0250		135.0250		AM							
TOLC		123.0250		123.0250		AM							
DECK		163.1000		163.1000		FM							
CALCORD - MEDICAL		156.0750	156.7 (6)	156.0750	156.7 (6)	FM							
AIRGUARD - Emergency Only		168.6250	110.9 (1)	168.6250		FM							




## MEDICAL PLAN (ICS 206)

<b>1. Incident Name:</b> <b>SCU LIGHTNING COMPLEX</b>		<b>2. Operational Period:</b> Date From: 8/23/20 Date To: 8/24/20 Time From: 0700 Time To: 0700					
<b>3. Medical Aid Stations:</b>							
Name	Location	Contact Number/Freq	Paramedics				
Cal Mat - California Medical Assistance Team	ICP	Lightning Communication	Yes				
MERT	ICP	Lightning Communications	<input type="checkbox"/> No				
<b>4. Transportation (indicate air or ground):</b>							
Ambulance Service	Location	Contact Number	Level of Service				
Medic 97, M801, M58 (Ground)	Calaveras Zone	Lightning Communication	ALS				
M7191, M7702, M815 (Ground)	Canyon Zone - Stanislaus County	Lightning Communication	ALS				
REMS 1	Canyon Zone	Lightning Communication	ALS				
Stanford Life Flight (Air)	Stanford - Santa Clara County	Lightning Communication	ALS				
CAL FIRE Copter 106 (Day Hoist)	Incident Helibase	Lightning Communication	ALS				
Guard 822 (Air) Night Ops	Redding	Lightning Communication	ALS				
<b>5. Hospitals:</b>							
Hospital Name	Address,	Contact Number(s)/ Frequency	Travel Time		Trauma Center	Burn Center	Helipad
	Lat & Long		Air	Ground			
John Muir/Walnut Creek	1601 Ygnacio Valley Road N37°54.77 W122°02.50	(925) 939-5800	13	30	Level 2	<input type="checkbox"/>	<input checked="" type="checkbox"/>
Santa Clara Valley Medical	751 S. Bascom Ave. San Jose N37°18.85 W121°56.05	(408) 885-5000	10	26	Level 1	<input checked="" type="checkbox"/>	<input checked="" type="checkbox"/>
UC Davis	2315 Stockton Blvd. Sacramento N38°33.28 W121°27.35	(916) 734-5010	15	35	Level 1	<input checked="" type="checkbox"/>	<input checked="" type="checkbox"/>
Community Regional Medical Center	2823 Fresno St. Fresno N36°44.65 W119°47.12	(559) 459-6000	33	1.5 hrs	Level 1	<input checked="" type="checkbox"/>	<input checked="" type="checkbox"/>
<b>6. Special Medical Emergency Procedures</b>							
<b>Line Emergency</b> Crew Supervisor will contact Division Supervisor with patient complaint/condition and location. - Division Group Supervisor Contacts: 1. Closest EMS resource 2. Communications Unit - Communications Unit Contacts: 1. Ground or Air ambulance as requested. 2. Operations 3. Safety 4. Medical Unit - Division Supervisor or designee will serve as point of contact and run medical emergency on assigned channel. 1. A pre-assigned tactical frequency (i.e. CALCORD) should be used for IWI and only for duration of the emergency. - Communications Unit will clear the Command channel for emergency traffic as needed for duration of the need.				<b>Injury Reporting Procedures</b>  Nature of Injury: _____ Location of Patient: _____ Point of Contact: _____ Transportation Requested by: Air _____ Ground _____ Point of Pick-Up: _____ Lat: _____ Long: _____ Patient Unit ID: _____ Is an EMT with Patient: Yes _____ No _____ Age: _____ Sex: Male _____ Female _____			
<b>Camp Emergency</b> Contact Medical Unit with patient complaint/condition and location. Medical staff will respond to stabilize the patient. - Medical Unit contacts 1. Communications 2. Safety 3. Logistics 4. Operations 5. Crew Supervisor 6. Comp/Claims				<b>All Emergencies - Secure the area and identified witnesses for later investigation. Keep accurate log of events.</b>			
<input type="checkbox"/> Check box if aviation assets are utilized for rescue. If assets are used, coordinate with Air Operations.							
<b>7. Prepared by (Medical Unit Leader):</b> J. Segura R. Beeson (T)				Signature:			
<b>8. Approved by (Safety Officer):</b> S. Buchmeir J. Novak (T)				Signature:			
ICS 206		NIMS IAP		Date/Time:		8/22/2020 17:30	

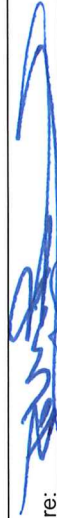
# ICS 205 - INCIDENT RADIO COMMUNICATIONS PLAN

CONTROLLED UNCLASSIFIED  
INFORMATION/BASIC

<b>1. Incident Name:</b> SCU LIGHTNING COMPLEX DEER & CALAVERAS		<b>2. Date/Time Prepared</b> Date: 08/22/2020 Time: 1930		<b>3. Operational Period:</b> Date From: 08/23/20 Time From: 0700		Date To: 08/24/20 Time To: 0700		
<b>4. Communications</b>								
Ch#	Function	Name	Assigned To	Rx Freq	Rx Tone	Tx Freq	Tx Tone	Notes
1	COMMAND	CDF C1	DEER ZONE	151.3550N	103.5 (T8)	159.3000N	110.9 (T1)	MT DIABLO - BR III / IV
2	COMMAND	NIFC C3	CANYON / CALAVERAS	170.4250N	131.8 (T3)	168.0750N	131.8 (T3)	MT OSO LINKED W/CMD 10, 11, 38, & 40
3	COMMAND	NIFC C10	CANYON / CALAVERAS	170.4125N	131.8 (T3)	165.9625N	131.8 (T3)	MT PACHECO LINKED W/CMD 3, 11, 38, & 40
4	COMMAND	NIFC C11	CANYON / CALAVERAS	170.6875N	131.8 (T3)	166.5750N	131.8 (T3)	MT ALLISON LINKED W/CMD 3, 10, 38 & 40
5	COMMAND	NIFC C38	CANYON / CALAVERAS	172.6750N	131.8 (T3)	163.0375N	131.8 (T3)	LOMA PRIETA PEAK LINKED W/CMD 3, 10, 11, & 40
6	COMMAND	NIFC C40	CANYON / CALAVERAS	173.7500N	131.8 (T3)	163.8250N	131.8 (T3)	COPERNICUS PK LINKED W/CMD 3, 10, 11, & 38
7	TACTICAL	VFIRE 24	DEER ZONE	154.2725N	156.7 (T6)	154.2725N	156.7 (T6)	BR III / IV
8	TACTICAL	VTAC11	BR XXI / BR XXIII / BR XXIV	151.1375N	156.7 (T6)	151.1375N	156.7 (T6)	CALAVERAS ZONE
9	TACTICAL	CDF T29	DIV R	151.3475N	192.8 (T16)	151.3475N	192.8 (T16)	CALAVERAS ZONE BR XXVI
10	TACTICAL	VTAC12	DIV Q	154.4525N	156.7 (T6)	154.4525N	156.7 (T6)	CALAVERAS ZONE BR XXVI
11	TACTICAL	VTAC13	DIV T	158.7375N	156.7 (T6)	158.7375N	156.7 (T6)	CALAVERAS ZONE BR XXV
12	TACTICAL	VTAC14	DIV V	159.4725N	156.7 (T6)	159.4725N	156.7 (T6)	CALAVERAS ZONE BR XXV/BRIEFING BROADCAST
13								
14	AIR TO GROUND	CDF T20	ALL BRANCHES	159.3750N	192.8 (T16)	159.3750N	192.8 (T16)	
15	MEDICAL	CALCORD	ALL BRANCHES	156.0750N	156.7 (T6)	156.0750N	156.7 (T6)	
16	EMERGENCY	GUARD 21	ALL BRANCHES	168.6250N		168.6250N	110.9 (T1)	AIR GUARD
17								
18								
19								
20	EMERGENCY	GUARD 21	ALL BRANCHES	168.6250N		168.6250N	110.9 (T1)	AIR GUARD
<b>5. Special Instructions</b>								
TO CONFIRM YOU HAVE THE MOST CURRENT CLONE, ENSURE YOUR DISPLAY OF CHANNEL 16 OR 20 MATCHES CHANNEL 16 OR 20 OF THE 205 - HEIGHT AND POWER ARE KEY WHEN USING RADIOS; BE AT A HIGH POINT, USE A MOBILE IF POSSIBLE, AND USE RADIO RELAYS WHEN NEEDED								
<b>6. Prepared by (Communications Unit Leader):</b> Name: John Brooks, IMT6				Signature: 		Date/Time: 08/22/20 1930		
ICS 205 - CONTROLLED UNCLASSIFIED INFORMATION/BASIC				NIMS IAP				

# ICS 205 - INCIDENT RADIO COMMUNICATIONS PLAN

CONTROLLED UNCLASSIFIED INFORMATION/BASIC

<b>1. Incident Name:</b> SCU LIGHTNING COMPLEX CANYON ZONE		<b>2. Date/Time Prepared</b> Date: 08/22/2020 Time: 1930		<b>3. Operational Period:</b> Date To: 08/24/20 Time To: 0700				
<b>4. Communications</b>								
Ch#	Function	Name	Assigned To	Rx Freq	Rx Tone	Tx Freq	Tx Tone	Notes
1								
2	COMMAND	NIFC C3	ALL BRANCHES	170.4250N	131.8 (T3)	168.0750N	131.8 (T3)	MT OSO LINKED W/CMD 10, 11, 38, & 40
3	COMMAND	NIFC C10	ALL BRANCHES	170.4125N	131.8 (T3)	165.9625N	131.8 (T3)	MT PACHECO LINKED W/CMD 3, 11, 38, & 40
4	COMMAND	NIFC C11	ALL BRANCHES	170.6875N	131.8 (T3)	166.5750N	131.8 (T3)	MT ALLISON LINKED W/CMD 3, 10, 38 & 40
5	COMMAND	NIFC C38	ALL BRANCHES	172.6750N	131.8 (T3)	163.0375N	131.8 (T3)	LOMA PRIETA PEAK LINKED W/CMD 3, 10, 11, & 40
6	COMMAND	NIFC C40	ALL BRANCHES	173.7500N	131.8 (T3)	163.8250N	131.8 (T3)	COPERNICUS PK LINKED W/CMD 3, 10, 11, & 38
7								
8	TACTICAL	VTAC14	DIV I & DIV J	159.4725N	156.7 (T6)	159.4725N	156.7 (T6)	BRANCH XV
9	TACTICAL	VFIRE 23	DIV K / L	154.2950N	156.7 (T6)	154.2950N	156.7 (T6)	BRANCH XV
10	TACTICAL	VFIRE 24	DIV M & DIV N	154.2725N	156.7 (T6)	154.2725N	156.7 (T6)	BRANCH XV
11								
12	TACTICAL	CDF T30	CANYON CONTEGENCY	151.3925N	192.8 (T16)	151.3925N	192.8 (T16)	
13								
14	AIR TO GROUND	CDF T20	ALL BRANCHES	159.3750N	192.8 (T16)	159.3750N	192.8 (T16)	
15	MEDICAL	CALCORD	ALL BRANCHES	156.0750N	156.7 (T6)	156.0750N	156.7 (T6)	
16	EMERGENCY	GUARD 21	ALL BRANCHES	168.6250N		168.6250N	110.9 (T1)	AIR GUARD
17								
18								
19								
20	EMERGENCY	GUARD 21	ALL BRANCHES	168.6250N		168.6250N	110.9 (T1)	AIR GUARD
<b>5. Special Instructions</b>								
TO CONFIRM YOU HAVE THE MOST CURRENT CLONE, ENSURE YOUR DISPLAY OF CHANNEL 16 OR 20 MATCHES CHANNEL 16 OR 20 OF THE 205 - HEIGHT AND POWER ARE KEY WHEN USING RADIOS; BE AT A HIGH POINT, USE A MOBILE IF POSSIBLE, AND USE RADIO RELAYS WHEN NEEDED								
<b>6. Prepared by (Communications Unit Leader):</b> Name: John Brooks, IIMT6			Signature: 					
ICS 205 - CONTROLLED UNCLASSIFIED INFORMATION/BASIC			Date/Time: 08/22/20 1930					

# **TRAINING MESSAGE**

## **TRAINEES:**

**ALWAYS KEEP YOUR TASK BOOK SECURED. IF LOST, YOU RUN THE RISK OF LOSSING CREDIT FOR THE TASK COMPLETED.**

## **TRAINERS:**

**PLEASE COMPLETE THE FOLLOWING DOCUMENTS FOR YOUR TRAINEES**

- **TASK BOOK (SIGN AND DATE THE COMPLETED TASKS)**
- **TASK BOOK EVALUATOR RECORD**
- **ICS 225: PLEASE STRIVE TO GIVE YOUR TRAINEE AND IN DEPTH PREOFRAMCE RATING**

*Don't train until you get it right, train until you can't get it wrong!*

**Any questions please contact the Training Specialist:**

**Shane Vargas (530) 410-4225**

**Dottie Shaw (619) 971-1701**

**Ian Crossley (530) 681-5100**

# eFC-33 INITIAL INPUT FORM

1 2 3 4 5 6 7

Overhead: complete one form per person.  
All Others: complete one form per vehicle.

Request Number						
----------------	--	--	--	--	--	--

State / Agency	Incident Number	Incident Name	Incident Index Code	Incident PCA Code
INCIDENT CA				

Strike Team	Resource ID - Fire Assignment	Home Station / Office Location
RESOURCE S T	E-3499 C	PASO ROBLES

YOUR NORMAL DUTY SCHEDULE	24 Hr 8-8 24 Hr 7-7 Other	Portal to Portal?	YOUR AGENCY	HOME UNIT	COMMIT / RELEASE	YOUR CELL PHONE #
	<input checked="" type="checkbox"/> One Box	<input checked="" type="checkbox"/>	CAL FIRE	S L U		

PERSONNEL	Schedule	First Name	Last Name	Rank or Classification	# of Regular Duty Scheduled Hours per Day										
					Mon	Tue	Wed	Thu	Fri	Sat	Sun				
EMPLOYEE 1	A														
EMPLOYEE 2															
EMPLOYEE 3															
EMPLOYEE 4															
EMPLOYEE 5															
EMPLOYEE 6															
	<input checked="" type="checkbox"/> One Box	Johnson	Robert	FC											

VEHICLE	Schedule	Kind of Vehicle	Radio ID	ID No/X No	Chainsaw Quantity:		
					One Box	Portable Pump?	Other
VEHICLE 1	A						
VEHICLE 2							
	<input checked="" type="checkbox"/> One Box	FTH	E-3499		0	2	1 2 3

Put a Dozer and It's Transport on a single form. All others, use one form per individual vehicle.

## ADDITIONAL INFO



# SHIFT TICKET EXAMPLE

EMERGENCY SHIFT TICKET and EVALUATION FORM					Contractor Name						
Incident or Project Name <b>SCU LIGHTNING COMPLEX</b>			Incident Number <b>CASCU 005740</b>		Request Number <b>E#</b>						
Agreement Number <b>XXX - 000000 - 00</b>			Operator #1 <b>BOB SMITH</b>		Operator #2 <b>TOM SMITH</b>						
Equipment Make <b>CAT</b>			Equipment Model / Type <b>D6XM</b>		Operator Furnished By: <input checked="" type="checkbox"/> Contractor <input type="checkbox"/> Government						
Serial Number <b>111111</b>			Licence Number <b>111111</b>		Operating Supplies Furnished By: <input checked="" type="checkbox"/> Contractor <input type="checkbox"/> Government						
Equipment Use (Circle) <b>Hours</b> Days / Miles			Equipment Status <input checked="" type="checkbox"/> Inspected <input checked="" type="checkbox"/> Under Agreement		Released by Government Withdrawn by Contractor						
Date	Start	Stop	Work	Assignment	Remarks/Comments **  <b>NO DAMAGE/ NO CLAIMS</b>						
8/17	0700	2400	17	DIV M							
8/18	0001	0700	7	DIV M							
Vendor Rating					Govt. Rep. Name and Position - PRINT <b>Mike Weber</b>						
<table border="1"> <tr> <td>Poor*</td> <td>Avg.</td> <td>Good</td> <td>Exc.</td> <td>N/A</td> </tr> </table>					Poor*	Avg.	Good	Exc.	N/A	Govt. Rep. Signature <i>Mike Weber</i>	
Poor*	Avg.	Good	Exc.	N/A							
Met Performance Expectations					Contractor Signature <i>Bob Smith</i>						
Equipment in Safe Working Condition					Date <b>08/18/20</b>						
Operator Skill Level					Time <b>0800</b>						
Operates Safely					Date <b>08/18/20</b>						
Operator's Cooperation Level					Time <b>0800</b>						
Overall Performance					Calfire 297 (Rev 3-2011)						
<p>* NOTE: Any rating of POOR requires an explanation in Comment Section.</p> <p>**Final evaluation or for more documentation, use an ICS Form 230 or equivalent.</p>											
Pink - Finance		Blue - Home Unit HE Coordinator			Yellow - Vendor		White - Govt Representative				

**Vendor Rating must be done.**

EMERGENCY SHIFT TICKET and EVALUATION FORM					Contractor Name						
The responsible Government Officer will complete this form each shift					DUDE TRANSPORT						
Incident or Project Name <b>SCU LIGHTNING COMPLEX</b>			Incident Number <b>CASCU 005740</b>		Request Number <b>E # Here</b>						
Agreement Number <b>XXX - 000000 - 00</b>			Operator #1 <b>BOB SMITH</b>		Operator #2 <b>TOM SMITH</b>						
Equipment Make <b>TRANSPORT/ KENWORTH</b>			Equipment Model / Type <b>COZAD TRAILER /26 WHEELS</b>		Operator Furnished By: <input checked="" type="checkbox"/> Contractor <input type="checkbox"/> Government						
Serial Number <b>1XP3ESMP14239012</b>			Licence Number <b>9999999</b>		Operating Supplies Furnished By: <input checked="" type="checkbox"/> Contractor <input type="checkbox"/> Government						
Equipment Use (Circle) <b>Hours</b> Days / Miles			Equipment Status <input checked="" type="checkbox"/> Inspected <input checked="" type="checkbox"/> Under Agreement		Released by Government Withdrawn by Contractor						
Date	Start	Stop	Work	Assignment	Remarks/Comments **  <b>NO DAMAGE/ NO CLAIMS</b>						
8/17	0700	2400	17	DIV M							
8/18	0001	0700	7	DIV M							
Vendor Rating					Govt. Rep. Name and Position - PRINT <b>Mike Weber</b>						
<table border="1"> <tr> <td>Poor*</td> <td>Avg.</td> <td>Good</td> <td>Exc.</td> <td>N/A</td> </tr> </table>					Poor*	Avg.	Good	Exc.	N/A	Govt. Rep. Signature <i>Mike Weber</i>	
Poor*	Avg.	Good	Exc.	N/A							
Met Performance Expectations					Contractor Signature <i>Bob Smith</i>						
Equipment in Safe Working Condition					Date <b>08/18/20</b>						
Operator Skill Level					Time <b>0800</b>						
Operates Safely					Date <b>08/18/20</b>						
Operator's Cooperation Level					Time <b>0800</b>						
Overall Performance					Calfire 297 (Rev 3-2011)						
<p>* NOTE: Any rating of POOR requires an explanation in Comment Section.</p> <p>**Final evaluation or for more documentation, use an ICS Form 230 or equivalent.</p>											
Pink - Finance		Blue - Home Unit HE Coordinator			Yellow - Vendor		White - Govt Representative				

**Vendor Rating must be done.**

**Turn shift tickets into Time Unit.**

STATE OF CALIFORNIA  
 DEPARTMENT OF FORESTRY AND FIRE PROTECTION  
**PROPERTY CERTIFICATION OF LOCATION OR DAMAGE**  
**CERTIFICATE OF RESPONSIBILITY FOR INCIDENT OCCURRENCE**  
 CAL FIRE-101 page 1 of 2 (1/07)

<b>Incident#:</b>
<b>Request #:</b>

DOC. NUMBER:
--------------

LOCATION / INCIDENT NAME:	INCIDENT NUMBER:	UNIT:	REGION:	DATE:
THE FOLLOWING ARTICLES WERE: (broken, left on line, damaged, or other)				DATE OF OCCURANCE:

QUANTITY	UNIT OF MEAS.	CAL FIRE STOCK NUMBER (COMPLETE WHENEVER ASSIGNED)	DESCRIPTION <small>(INDICATE SIZE, MAKE, MODEL, TYPE, ETC., TO CLEARLY DESCRIBE THE ITEM. PROVIDE ADEQUATE DATA TO EFFECTIVELY IDENTIFY EQUIPMENT OR PROPERTY)</small>	PROPERTY NUMBER

<b>DIV:</b> _____ <b>Div's Name:</b> _____
<b>Div. Signature:</b> _____
Attention Division Group Sup., by signing you are authorizing the above items to be replaced by the Supply Unit and / or Fire.

LOCATION OF ITEMS: \_\_\_\_\_

REMARKS: \_\_\_\_\_  
 \_\_\_\_\_  
 \_\_\_\_\_

SIGNATURE OF PERSON CERTIFYING OCCURANCE AS DESCRIBED			
SIGNATURE:	PRINTED NAME:	TITLE:	DATE:
UNIT SUPERVISOR'S APPROVAL			
COMMENTS:			
SIGNATURE OF UNIT ADMINISTRATOR:		TITLE:	DATE:



# PUBLIC INFORMATION



## Official Sources of Public Information

Incident Information Line: 916-618-3195

Incident Information Line: 669-247-7431

Incident Media Line: 925-588-6809

Incident Website: [www.fire.ca.gov](http://www.fire.ca.gov)

Email Signup: <https://tinyurl.com/CALFIREMEDIA>

Online Evacuation Map: <https://tinyurl.com/scu-evacmap>

### CAL FIRE WEBSITE



### EMAIL SIGN UP



### EVACUATION MAPS



STATUS	
Incident Start Date: August 16, 2020	Incident Start Time: 4:00 AM
Acreage:	Containment:
Cause: Under Investigation	Total Personnel:

### Media Law

The California State Penal Code Section 409.5(d) allows the news media to enter scenes of disaster, riot, or civil disturbance. Properly identified members of the news media should not be restricted from entering locations specified within the code. However, this does not include crime scenes, and does not imply that the news media may interfere with incident operations while they are in the areas of concern. If entering such a location that is hazardous, they should be advised; media access cannot be prevented for safety reasons unless their presence would impede CAL FIRE's mitigation of the incident or the disturbing of evidence. When working around the media, remember:

- Media **is not permitted** on private property without the property owners permission.
- If approached and questioned by the media and or the public, talk about your assignment or task at hand. Remember to wear all the appropriate PPE.
- If needed call for an incident PIO through the chain of command.
- Never speculate, give opinions or speak for others.
- There is no such thing as an "off the record" comment.

### CAL FIRE Social Media Policy (Social Media 0691)

Social Media is increasingly being used by public agencies, the media as well as the public. This form of communication continues to grow rapidly in order to supply the instant gratification needs of society. Therefore when on a CAL FIRE incident you will adhere to the CAL FIRE Social Media Policy, 0691. You can get further information about the CAL FIRE Social Media Policy from the incident Public Information Officer. While assigned to the incident, there will be no posting of:

- Inappropriate information or materials
- No opinions
- No endorsements
- Inappropriate pictures or videos

### Lost and Found

The Information Section will manage Lost and Found items for the incident. If you have lost an item leave your contact information and what you have lost at the Information Section. If you have found an item on the incident bring the item to the Information Section with your contact information as well.

### Incident Base Camp Mailing Address

c/o Public Information Office/Trailer

4501 Pleasanton Ave.

Pleasanton, CA 94566

Pleasanton Ave. Street Entrance



## Peer Support Team Message:

### INCIDENT PEER SUPPORT:

We have a few people on the incident for any peer support related needs. The best way to get a hold of them is to call them directly.

**Jeremy Sanders-916 281-6472**

**Shawna Powell-530 717-0667**

**John Kiszka-530 598-2615**

or

**CAL FIRE Peer Support/Helpline**

**916-445-4337**

**Below are other Team Members not on the incident who can also be contacted directly:**

**Tony Howard 916-224-1543**

**Mike Aiello 916-584-0548**

**Warren Parrish 916-823-6641**

**Nikole Schutz 916-709-0434**

**Amber Henderson 805-794-1690**

**Amy Head 916-956-3277**

**Chris Lomanto 916-247-6974**

**Connie Quarisa 916-213-8697**

In addition to peer support, if there is a need, we can have a culturally competent Clinician available on the incident that could meet with you on an individual and/or group basis.

Watch for the signs and symptoms of stress in yourself and the people around you. Try and stay positive and get much needed rest when you can. We can do this, together!

Stay Healthy, Stay Alert and Stay Strong!

*CAL FIRE Employees can also contact EAP directly at: 1-866-327-4762*

# SCU Lightning Incident Maps may be accessed

by going to:

<https://ftp.nifc.gov>

or google: "nifc ftp"

Click:

>Incident Specific Data

>calif\_n

>!CALFIRE

>2020\_Incidents

>CA-SCU-005740\_SCU\_Lightning\_Complex

>GIS >Products

> Desired Date > Select desired map

>Generally, the single most beneficial map to download is the Ops Map

# SCU LIGHTNING COMPLEX INCIDENT FACILITIES MAP

CA SCU 005740



4 MILES AWAY  
**580**  
 INTERSTATE

1 MILE AWAY  
**680**  
 INTERSTATE

ALAMEDA COUNTY  
 FAIRGROUNDS  
 PLEASANTON  
**Full Grounds Map  
 (Staff/Clients)**

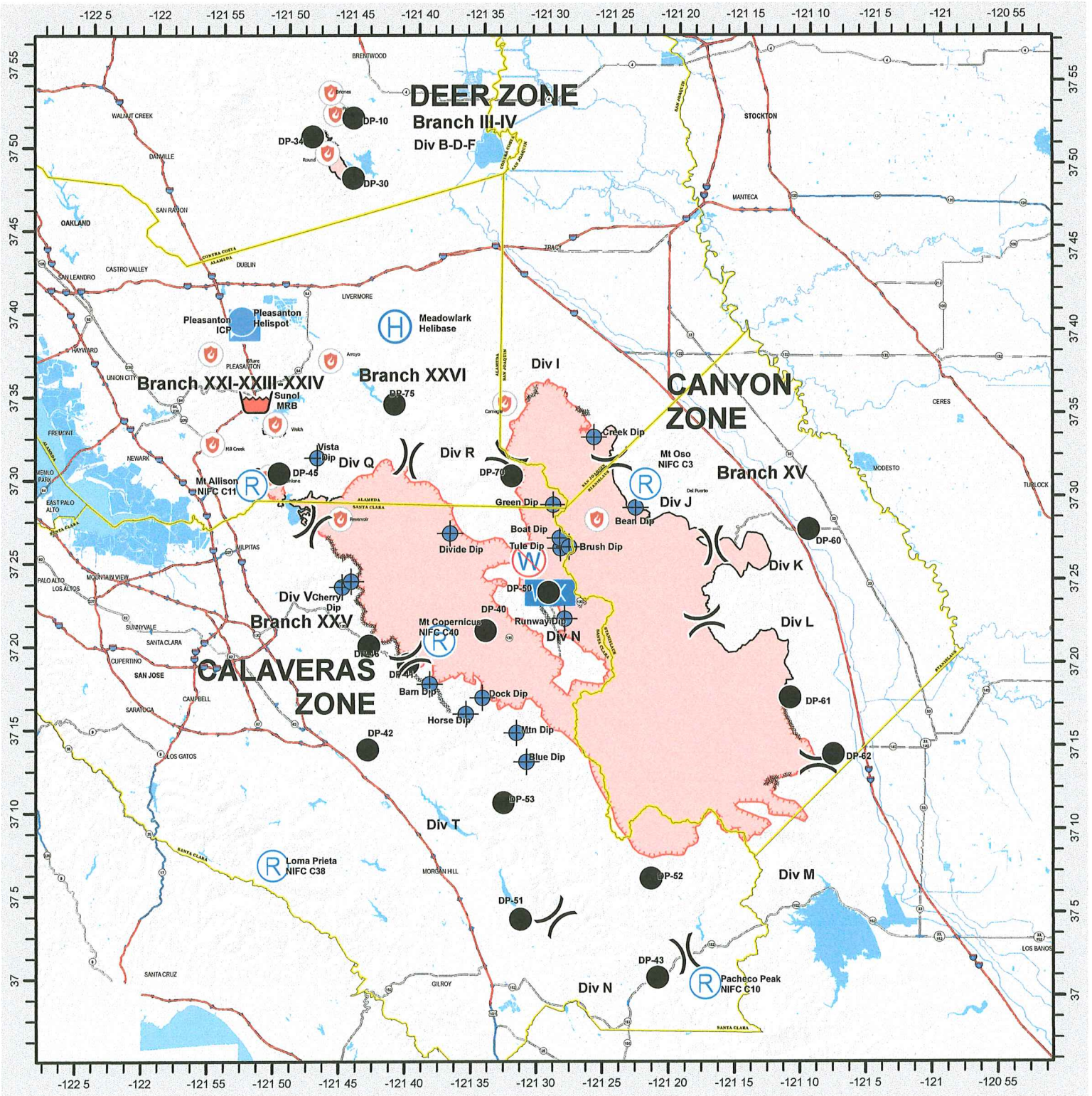
1	Ground Support	6	CCC Sleeping	11	Ice	16	Sleep Trailers	21	Time Unit	26	Inmate Tents	31	Medical	36	Operations 41	IC	
2	Fuel	7	Vendor Sleeping	12	Tools & Equipment	17	Showers	22	Motels	27	Potable, Grey Water	32	Sheriff ALCO	37	FBAN	42	Plans
3	Dozer Parking	8	Tents	13	Lunches	18	Laundry	23	CAL OES	28	Inc/Net	33	Finance	38	Liason	43	Situation
4	Vendor Staging	9	Water	14	CAL MAT	19	Comp Claims	24	Facilities	29	Briefing	34	Safety	39	Resources	44	JIC
5	Vendor Sleeping	10	Supply	15	COVID Testing	20	Check-in & Demob	25	Food Unit	30	Employee Support Services	35	Ordering/LOGS	40	Clerical	45	PIO

- Hand Washing Station
- Tent Area
- Porta Potty
- Dozer Route
- General Route
- MAP ID



# SCU LIGHTNING COMPLEX INCIDENT TRANSPORTATION MAP

CA SCU 005740 - 8/23/2020



0 2.5 5 10 15 20 25 Miles

Uncontrolled Fire Edge	County Boundary	Drop Point	Division Break	Fire Point
Completed Dozer Line	Completed Hand Line	Dip Site	Branch Break	Mobile Weather Unit
Helibase				Restricted Water Source
Helispot				Mobile Red Base

**CAL FIRE - INCIDENT MANAGEMENT TEAM 6**  
Established 1994

IMT 6 GISS  
8/23/2020  
0036 Hours  
NAD 83 Teale Albers

DISCLAIMER: This document is for informational purposes only and should not be used for legal or financial decisions. The information contained herein is based on the best information available at the time of printing. CAL FIRE and its employees are not liable for any errors or omissions in this document.



