

INCIDENT ACTION PLAN SCU LIGHTNING COMPLEX

CA-SCU-005740

Tuesday



OPERATIONAL PERIOD

9/1/2020 0700
to
9/2/2020 0700



INCIDENT OBJECTIVES (ICS 202)

| | | | |
|---|-------------------------------|--|------------------------------------|
| 1. Incident Name: <p style="text-align: center;">SCU LIGHTNING COMPLEX</p> | 2. Operational Period: | Date From: 9/1/2020 Time From: 0700 | Date To: 9/2/2020 Time To: 0700 |
|---|-------------------------------|--|------------------------------------|

3. Objective(s):

- Management Objectives**
- Provide for emergency personnel and public safety at all times.
 - Ensure COVID-19 precautions and best practices are met at all times.
 - Protect property, improvements, and infrastructure.
 - Ensure repopulation takes place in a quick, efficient, and effective manner.
 - Ensure coordinated, timely and accurate release of public information.
 - Foster and maintain relationships with all cooperators and stakeholders.
 - Protect economic, natural, cultural and heritage resources.
 - Maintain fiscal accountability and keep costs commensurate with values at risk.

- Control Objectives**
- Keep the fire North Hwy 152
 - Keep the fire West of I-5
 - Keep the fire South of I-580
 - Keep the fire East of I-680 and Hwy 101

General Situational Awareness:

Steep and rugged terrain, critically dry and receptive fuel beds, active area for fire history and drought stressed trees.

In the COVID-19 environment, high density populations or large groups are particularly at risk.

To help protect yourself, your family, and to ensure all employees return home safely, make sure to practice social distancing.

Enhanced hygiene (especially handwashing), PPE & monitoring practices help limit the infection rate of first responders.

5. Site Safety Plan Required? Yes No

Approved Site Safety Plan(s) Located at:

- 6. Incident Action Plan**
- | | | | |
|---|--|--|--|
| <input checked="" type="checkbox"/> ICS 203 | <input checked="" type="checkbox"/> ICS 220 | <input checked="" type="checkbox"/> PIO Message | <input checked="" type="checkbox"/> Peer Support Message |
| <input checked="" type="checkbox"/> ICS 204 | <input checked="" type="checkbox"/> Facility Maps | <input checked="" type="checkbox"/> Transportation Map | <input checked="" type="checkbox"/> COVID-19 Safety Bulletin |
| <input checked="" type="checkbox"/> ICS 205 | <input checked="" type="checkbox"/> Weather Forecast | <input checked="" type="checkbox"/> COVID Daily Check | <input checked="" type="checkbox"/> Fire Suppression Repair Plan |
| <input checked="" type="checkbox"/> ICS 206 | <input checked="" type="checkbox"/> Fire Behavior | <input checked="" type="checkbox"/> Finance Message | <input checked="" type="checkbox"/> Demob Message |
| <input checked="" type="checkbox"/> ICS 208 | <input checked="" type="checkbox"/> Training Message | <input checked="" type="checkbox"/> Shift Ticket Example | <input checked="" type="checkbox"/> ICS 214 |

| | | |
|---|----------------------|------------|
| 7. Prepared By: Gabe Garcia | Position/Title: PSC1 | Signature: |
| 8. Approved by Incident Commander: | Dusty Martin IC (T) | Signature: |

ORGANIZATION ASSIGNMENT LIST (ICS 203)

| | | | | | |
|--|------------------------------------|---|------------------------------|---|---|
| 1. Incident Name: SCU LIGHTNING COMPLEX | | 2. Operational Period: Date From: 9/1/2020 | | Date To: 9/2/2020 | |
| | | Time From: 0700 | | Time To: 0700 | |
| 3. Incident Commander(s) and Command Staff: | | | 7. Operation Section: | | |
| IC/UC's | J.Veik / A. Mitchell (T) | Operations | S. Corn | | |
| Deputy | M. Blankenheim / D. Martin (T) | Deputy Operations | S. Lane (T) | | |
| Safety Officer | J. Buchmeier / J. Novak (T) | Night Ops | M. Jonsson | | |
| Information Officer | R. Brocchini / R. Lubben (T) | Staging Area | | | |
| Liaison Officer | M. Villalpando / J. Kiszka (T) | Branch | I | D. Esades (12) | |
| 4. Agency/Organization Representatives: | | Division/Group | I | | |
| CAL OES Fire | Dave Franklin | Division/Group | J / K / L | | |
| Alameda County SO | Paul Liskey | Division/Group | Q / R | | D. Prevett / J. Salazar |
| Santa Clara County SO | Thea Lera | Division/Group | V | | |
| Contra Costa County SO | Rich Kovar | Division/Group | | | |
| Santa Clara County OEM | Dana Reed | Division/Group | | | |
| State Parks | Wes Gray | Staging Area | ICP | | |
| PG&E | Pam Perdue | Branch | II | M. Martinez | |
| TID | Jason Hicks | Division/Group | M / N | | |
| San Francisco Water | Rick Duffey | Division/Group | O | | K. Mapes / R. Henault |
| CCC | Shawn Fry | Division/Group | T | | R. Sonsteng |
| CALOES | Jim Linn | Division/Group | | | |
| East Bay Regional Park | Brian Cordeiro | Division/Group | | | |
| Alameda County FD | Eric Moore | Staging Area | Gilroy | | |
| Livermore-Pleasanton | Jeff Peters (FIRE) | Branch | Suppression Repair | S. Ward (12) / E. Orre (12) / R. McLaughlin (12) | |
| | | Division/Group | 1 | S. Forman (T) (12) | |
| | | Division/Group | 2 | R. Engler (12) | |
| | | Division/Group | 3 | W. Barteau (12) | |
| | | Division/Group | 4 | M. Boyce (12) / B. Willson (T) (12) | |
| | | Division/Group | | | |
| | | Division/Group | | | |
| 5. Planning Section: | | Division/Group | | | |
| Chief | G. Garcia | Division/Group | | | |
| Deputy | D. Scheurich (T) | Division/Group | | | |
| Resource Unit | J. Anderson / D. McCarroll | Division/Group | | | |
| Situation Unit | N. Wallingford / R. Broomfield (T) | Division/Group | | | |
| Documentation Unit | M. Schaeffer | Division/Group | | | |
| Demobilization Unit | J. Worden / M. Schaeffer | Division/Group | | | |
| GISS | T. Knecht | Division/Group | | | |
| FBAN | S. Volmer | Air Operations Branch | | Director: | B. Kremensky |
| IMET | R. Walbrun | Air Support Group Supervisor | | P. Mateer | |
| Training Tech Spec | S. Vargas / I. Crosslay (T) | Air Tactical Group Supervisor | | | |
| 6. Logistics Section | | Helibase Manager | | R. Johnson / L. Kalfsbeek (T) | |
| Chief | S. Dohman / A. Long | | | | |
| Deputy Chief | J. Warden | 8. Finance/Administration Section: | | | |
| Supply Unit | P. Lee | Chief | G. Belk / J. Tapia (T) | | |
| Facilities Unit | B. Luiz / J. Finley | Deputy Chief | R. Browne | | |
| Ground Support Unit | J. Luckenbach / D. Zumkeller (T) | Time Unit | J. Navarro | | |
| Communications Unit | J. Brooks / B. Rapp (T) | Procurement Unit | J. Andrade | | |
| Medical Unit | J. Segura / R. Beeson (T) | Comp/Claims Unit | B. Stirton / E. Sanchez | | |
| Motel Unit | B. Brewer | Cost Unit | G. Bull (T) | | |
| Prepared By: Name: | Josh Anderson | Position/Title: | RESL | Signature: |  |
| ICS 203 | | Date/Time: | 8/31/2020 2300 hours | | |



SCU Lightning Complex Fire Weather Forecast



FORECAST NO: 14

NAME OF FIRE: SCU Lightning Complex

PREDICTION FOR: 0700 Tue-0700 Wed

UNIT: CALFIRE Santa Clara

SHIFT DATE: Sept 1st-Sept 2nd

SIGNED:

Incident Meteorologist-Ryan Walbrun

TIME AND DATE

FORECAST ISSUED: 2000 Aug 31st

WEATHER DISCUSSION: High pressure will continue to gradually build over the region today. Day over day changes will remain subtle with continued warming and drying. The biggest change may be that winds aloft will switch to a more northerly direction allowing smoke to be pushed out into the Santa Clara Valley. For operations in Div T and O winds should remain light from Southwest early turning Northwest through the afternoon but remaining light. The inversion depth will remain under 2000 feet keeping nearly all of the fire in the warm and dry conditions above the inversion layer. Suppression repair regions in Branch I will be the hottest and driest with readings into the 90s. Lingering smoke and haze in Div T and O will keep temperatures in the mid and upper 80s. For tonight, after an evening uptick in humidity due to onshore breezes expect to see the humidity values lower overnight with a minimum of 15-20% from 3am-6am. ***Rapid lowering of night time humidity is a major Watch Out situation in these hills.*** Take hourly weather observations overnight and monitor humidity trends.

WEATHER FORECAST FOR TUESDAY:

WEATHER: A few morning clouds below 2000 feet otherwise smoke and hazy sunshine.

TEMPERATURES: Highs 84-88 Div T and O and 89-95 in Branch I.

HUMIDITY: 22-32% Div T and O. 14-22% above 2000 feet, driest in Branch I.

20 FT WINDS:

Ridgetop: West to Southwest 4-8 mph afternoon gusts 12-15 mph strongest Div Q and R.
Slopes : Upslope/Upcanyon 3-8 mph late afternoon gusts 12 mph Branch I drainages.

TRANSPORT WINDS: North to Northeast 5 to 10 mph will push smoke over the Santa Clara Valley.

STABILITY/INVERSION: Moderate to strong morning inversion breaking by 1300.

WEATHER FORECAST FOR TUESDAY NIGHT:

WEATHER: Smoke and haze otherwise mostly clear skies over the fire with a few clouds Santa Clara Valley

TEMPERATURES: Lows 62-69 lower slopes and 70-79 above 2000 feet.


HUMIDITY RECOVERY: 40-50% but lowering to 20-30% above 2000 feet locally 15-20% after midnight.

20 FT WINDS: Ridgetop: Northwest winds 4-8 mph evening gusts 12 mph, becoming North 4-8 mph.
Slopes : Downcanyon 2-5 mph.

STABILITY/INVERSION: Stable inversion layer setting up overnight.

Extended Forecast: High pressure strengthens Wednesday through Labor Day weekend with a warming and drying trend. Highs 88-98 with warm overnight lows. Poor humidity recovery, even on the lower slopes. The marine layer gets wiped out meaning the lower slopes will become available for burning. Some light north to northeast winds develop over the ridges with light diurnal winds lower slopes and drainages.

FIRE BEHAVIOR FORECAST

| | |
|--|--|
| FORECAST NUMBER: 15 | TYPE OF FIRE: WILDFIRE |
| FIRE NAME: SCU LIGHTNING COMPLEX CASCU-005740 | OPERATIONAL PERIOD: 9/1-9/2/20 0700-0700 |
| DATE ISSUED: 8/31/20 | TIME ISSUED: 2000 |
| UNIT: SANTA CLARA | SIGNED:  Typed/printed: Stephen Volmer FBAN |

INPUTS

WEATHER SUMMARY:

Hot and dry weather has settled into the area with high pressure building. The daytime inversion at will begin lifting by noon. Expect high 80's on the lower western slopes, and high 90's on the interior and eastern slopes. Daytime humidity will be in the teens for the interior upper slopes. Daytime northwest winds will prevail across the ridgetops, while lower elevations will experience terrain driven up slope/up valley winds. The inversion layer will set in at 2,000' elv and keep a majority of the fire warm and dry at night. High winds along Hwy 152 and Hwy 580 corridors can be extremely gusty throughout the day.

OUTPUTS

FIRE BEHAVIOR

| FUEL MODEL | RATE OF SPREAD FT/MIN | FLAME LENGTH FT | SPOTTING DISTANCE | PROBABILITY OF IGNITION |
|---------------|-----------------------|-----------------|-------------------|-------------------------|
| GRASS | 71-114 | 7 | .30 mi | 90% |
| BRUSH | 66-102 | 21 | .60 mi | 90% |
| OAK OVERSTORY | 15-25 | 12 | .40 mi | 90% |

GENERAL:

The ERC is currently above the 90th percentile and will continue to rise in the current weather pattern. The 1000hr fuels are below the 3rd percentile and are almost at historic levels. Thick decadent brush fields have a large amount of dead material in them and lack any significant fire history. **Fuels above 2,000' elevation will burn extremely well all night due to humidity dropping and temperatures lowing minimally.** When fuels, wind, and topography are all in alignment you can expect dangerous rates of spread.

*****Values above are valid for any new starts in the area*****

SPECIFIC:

- Be alert after midnight for decreasing humidity, and increasing fire activity.
- Drainages running N-S will be in alignment with evening wind patterns.
- Heavy equipment working will be a significant ignition source. Be alert to your work area.
- Hot dry conditions will allow any new ignitions to become active extremely fast.

AIR OPERATIONS: Visibility will clear up by noon when the inversion lifts around 13:00. Expect gusty conditions over the ridgetops in the afternoon. Transport winds North Northeast 5 mph will push the smoke back into the Santa Clara valley. Smoke will hinder air resources, have a back up plan before you need one.

Sunset 19:34 Sunrise 06:37

SAFETY

- Weather becoming hotter and dryer. Watch for poor overnight humidity recovery, and track the trends.
- Be alert to your parking location. Dry grass will ignite from the heat of mufflers and engines.
- Terrain and fuels make travel to safety zones difficult. Locate them early in the shift and make them known.



SAFETY MESSAGE

SCU LIGHTNING COMPLEX



| | | |
|---|--|-----------------------------------|
| 1. Incident Name: SCU LIGHTNING COMPLEX | 2. Operational Period: Date From: 9/1/20 Time From: 07:00 | Date To: 9/2/20 Time To: 07:00 |
|---|--|-----------------------------------|

THIS INCIDENT NEEDS AN IMMEDIATE TACTICAL PAUSE FOR DRIVING OPERATIONS

- Thoroughly evaluate your off-road driving routes. Watch for congested roadways and heavy traffic in and around the incident. Maintain a safe following distance.
- Utilize appropriate speeds, backers and spotters while vehicle is in operation.
- Stay aware of road conditions as they can change throughout the incident.
- ESTABLISH: LOOKOUTS, COMMUNICATIONS, ESCAPE ROUTES AND SAFETY ZONES.
- Ensure radios are properly programmed for today's IAP and all crewmembers are familiar with incident communication plan.
- Beware of environmental hazards such as poison oak, trip hazards, steep slopes, and stump holes.
- Understand that residents, workers and the media may still be present on the incident.
- Monitor yourself and your crew for fatigue. Set a reasonable pace for your assignment.



Avoid complacency by staying engaged and focused on the tasks assigned

4. Site Safety Plan Required? Yes No

5. Prepared by: Name: J Buchmeier SOF1 / J Novak SOF1(T)

ICS 208

Date/Time August 31, 2020 / 1900

| 1. Incident Name: SCU LIGHTNING COMPLEX | | 2. Incident Number: CA-SCU-005740 |
|---|-------------------------------------|--|
| 3. Incident Area | 4. Hazards/Risks | 5. Mitigations |
| ALL | STEEP TERRAIN | <ul style="list-style-type: none"> - BE CAREFUL OF LOOSE DEBRIS - WATCH FOOTING |
| ALL | DRIVING | <ul style="list-style-type: none"> - TURN ON HEADLIGHTS - SLOW DOWN |
| ALL | FATIGUE | <ul style="list-style-type: none"> - MAINTAIN PROPER WORK REST CYCLES & DOCUMENT IN YOUR ICS-214 |
| ALL | HYDRATION | <ul style="list-style-type: none"> - MAINTAIN 3 WATER's TO 1 ELECTROLYTE RATIO |
| ALL | BACK HAUL/TRASH | <ul style="list-style-type: none"> - USE PROPER LIFTING TECHNIQUES |
| ALL | IN CAMP CIVILIAN PEDESTRIAN TRAFFIC | <ul style="list-style-type: none"> - DIVERTING PEDESTRIAN TRAFFIC OFF PAVED ROADWAY - MAINTAIN 5 MPH SPEED LIMIT IN CAMP |
| ALL | DEMOB NOW IN PROGRESS | <ul style="list-style-type: none"> - COMPLETE YOUR GOLDEN CIRCLE - ENSURE EQUIPMENT IS STOWED/SECURED |
| ALL | HIRED EQUIPMENT | <ul style="list-style-type: none"> - PROVIDE PROPER SUPERVISION PER CAL FIRE POLICY |
| ALL | HYGEINE | <ul style="list-style-type: none"> - ENSURE PROPER HAND-WASHING & CLEANLINESS |
| ALL | DROUGHT STRESSED TREES | <ul style="list-style-type: none"> - MAINTAIN SITUATIONAL AWARENESS |
| ALL | COMMUNICATIONS | <ul style="list-style-type: none"> - FOLLOW THE COMM PLAN - USE HUMAN REPEATERS - USE HELCO IF ALL ELSE FAILS |
| ALL | MOP UP | <ul style="list-style-type: none"> - WATCH FOR STUMP HOLES - WEAR FULL PPE |
| 6. Prepared by: Joe Buchmeier SOF1/Jason Novak SOF1(T)   | | |
| ICS 215A | Operational Period 9/1/20 – 9/2/20 | Time: 0700 - 0700 |



CAL FIRE / INCIDENT MANAGEMENT TEAM 6

COVID-19 DAILY HEALTH CHECK SCREENING ALGORITHM



EACH WORKDAY WILL BEGIN WITH THE FOLLOWING:

Temperature recorded
Employee Screening Questionnaire

TEMPERATURE RECORDED

- Fever YES/NO? *Fever is considered > 100.4*
- #### EMPLOYEE SCREENING QUESTIONNAIRE
- Are you feeling ill/feverish?
 - Are you having chills?
 - Do you have new or worsening SOB?
 - Do you have a new or worsening cough?
 - Do you have a new or prolonged sore throat?

No Fever and **No** answered to all
Employee Screening Questionnaire

Continue with Daily Operations

Yes Fever **OR** **Yes** answered to any of the Employee Screening Questionnaire

- Wash Hands, Don Mask and Isolate from other employ-ees. Maintain a distance of > 6 feet.
- Notify the Company Officer and/or Strike Team Leader.
- Notify Medical Unit Leader
- Refer employee to appropriate healthcare provider for evaluation and treatment.
- Disinfect "High-touch" surface areas.

REMINDERS TO ALL EMPLOYEES

- ◇ Self-Monitor yourself while you are on and off the line. If you experience any flu-like symptoms, COVID-19 symptoms, or any Respiratory illness symptoms contact your Company Officer and or Strike Team Leader.
- ◇ Maintain proper hand hygiene. Wash hands with soap and water for 20 seconds. Utilize hand sanitizer often. Do not shake hands, touch, or hug others.
- ◇ Cover coughs or sneezes (if not masked). Cloth Masks should be exchanged and or washed daily.
- ◇ Masks are required when out in the public on non-emergency business.
- ◇ Disinfect high-touch surfaces daily.
- ◇ Practice social distancing (> 6 feet) at meal times, dormitories, in-person meeting, or while in public.



Employee Response Action Plan

COVID-19 Positive Test or COVID-19 Positive Clinical Symptoms Presentation

- COVID 19 Symptoms: Cough, SOB, Fever or afebrile, Chills, Muscle Pain, Sore throat, Loss of taste/smell
- Employee informs Company Officer and Strike Team Leader of presumed/confirmed COVID-19 symptoms.
- Employee advised to seek evaluation by Medical Unit and CAL MAT or base camp medical unit.
- Crew initiates cleaning measures. Mask, safety glasses, gloves worn. (If needed, LOGS will assist)
- Medical Unit to notified IC, Liaison, Safety and Logistics ASAP. Medical Unit will notify COVID-19 Public Health Officer and determine need for testing and locations.



Incident Action Plan

- Company Officer / Strike Team Leader notified of personnel with COVID-19 positive test or symptom.
- Medical Unit evaluates individual(s) and need for care and evaluation.
- IC, Liaison, Safety and Logistics notification made to determine course of incident evaluation and response.
- Line Chief, Agency Administrator, and Region Office updated upon notification



Facilities Response

- Medical and Safety notified
- Incident Notification
- Disinfection plan initiated.
- Resource Status Evaluated



Medical Evaluation & Contact Tracing

- Personnel interviewed by Medical Unit . List of Positive contacts made in the last 5 days acquired. All Exposed are required to wear surgical mask, self monitor for Fever/Resp symptoms for up to 14 days (exposed personnel are subject to COVID-19 testing)
- Home Unit / Department utilized and retrospective tracking of Positive COVID-19 personnel inter-actions are identified within the last 5 days.
- Home Unit / Department updated by Company Officer / Strike Team Leader.
- Public Health Department is contacted and updated by IC or Designated Representative.
- Positive COVID-19 Employees w/symptoms will need to be evaluated by Health Department conducting testing, prior to returning to assignment.
- Positive COVID-19 Employees w/o symptoms may be required to be evaluated and resource status will be reviewed prior to returning to assignment.

ASSIGNMENT LIST (ICS 204 WF)

CONTROLLED UNCLASSIFIED
INFORMATION//BASIC

| | | |
|--|---|---|
| 1. Incident Name: SCU LIGHTNING COMPLEX | 2. Operational Period: Date From: 09/01/20 Date To: 09/02/20 Time From: 0700 Time To: 0700 | 3. Branch Division I Q / R |
|--|---|---|

| | | |
|---|------------------------------|--------------------|
| 4. Operations Personnel: | | Page 1 of 1 |
| Operations Section Chief: S. Corn | Night Ops: M. Jonsson | |
| Branch Director: D. Esades (12) | Branch Safety: | |
| Division/Group Supervisor: D. Prevett / J. Salazar | Air Attack: | |

| 5. Resources Assigned: | ** Resources Below in Bold are 12 Hour ** | | | | | | | |
|------------------------|---|-----|--------------------|-----------|-----------|------------------|--------------------|--|
| Resource Identifier | ALS | LWD | Leader | Personnel | Request # | Hours | Reporting Location | |
| STC XSB 1522C | X | | A. Wilding | 21 | E-208 | 0700-1900 | ICP | |
| STC XAL 2005C | | | J. Bowron | 22 | E-349 | 0700-0700 | ICP | |
| STC OESH TX-1 | | | R. Mack | 22 | E-451 | 0700-1900 | ICP | |
| STC OESH TX-2 | | | S. Campbell | 22 | E-452 | 0700-1900 | ICP | |
| STG LMU 9223G | | | C. Bonner | 35 | C-30 | 0700-0700 | ICP | |
| STG LMU 9224G | | | R. Veverka | 34 | C-31 | 0700-0700 | ICP | |
| W/T PVT E-228 | | | T. Kelly | 2 | E-228 | 0700-0700 | ICP | |
| REMS MODULE 53 | X | | R. Smith | 1 | O-377 | 0700-1900 | ICP | |
| FEMP CARLSON | X | | E. Carlson | 1 | O-196 | 0700-0700 | ICP | |
| FEMP HAUT | X | | M. Haut | 1 | O-193 | 0700-0700 | ICP | |
| | | | | | | | | |
| | | | | | | | | |
| | | | | | | | | |
| | | | | | | | | |
| | | | | | | | | |
| | | | | | | | | |
| | | | | | | | | |
| | | | | | | | | |
| | | | | | | | | |
| | | | | | | | | |
| | | | | | | | | |

6. Work Assignments:
 Construct and/ or improve Fire line.
 Tactical Patrol.
 Mop up 300' in from control line.

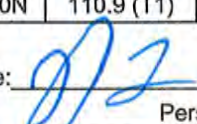
7. Special Instructions:

| 8. Communications | | | | | | | |
|-------------------|----|----------------|-----------|-------------|-----------|-------------|--|
| Name | Ch | Function | Rx Freq | Rx Tone | Tx Freq | Tx Tone | Notes |
| NIFC C11 | 4 | COMMAND | 170.6875N | 131.8 (T3) | 166.5750N | 131.8 (T3) | MT ALLISON LINKED W/CMD 3, 10, 38 & 40 |
| CDF T30 | 8 | TACTICAL | 151.3925N | 192.8 (T16) | 151.3925N | 192.8 (T16) | |
| CDF T15 | 13 | ROTARY A/G | 159.2700N | 192.8 (T16) | 159.2700N | 192.8 (T16) | ROTARY AIRCRAFT AIR TO GROUND |
| CDF T20 | 14 | FIXED WING A/G | 159.3750N | 192.8 (T16) | 159.3750N | 192.8 (T16) | FIXED WING AIRCRAFT AIR TO GROUND |
| CALCORD | 15 | MEDICAL | 156.0750N | 156.7 (T6) | 156.0750N | 156.7 (T6) | |
| GUARD 27 | 16 | EMERGENCY | 168.6250N | | 168.6250N | 110.9 (T1) | AIR GUARD |

| | | |
|--|---------------------------|----------------------|
| 9. Prepared by: Name: Josh Anderson | RESL | Signature: |
| ICS 204 | Date/Time: 8/31/2020 2200 | Personnel Count: 161 |

ASSIGNMENT LIST (ICS 204 WF)

CONTROLLED UNCLASSIFIED
INFORMATION//BASIC

| | | | | | | | | |
|--|-----|-------------------------------|-------------------------|------------------------------|------------------|--|--------------------------------------|--|
| 1. Incident Name: | | 2. Operational Period: | | | 3. Branch | | Group | |
| SCU LIGHTNING COMPLEX | | Date From: 09/01/20 | Date To: 09/02/20 | Suppression Repair | | 1 | | |
| | | Time From: 0700 | Time To: 0700 | | | Page 1 of 2 | | |
| 4. Operations Personnel: | | | | | | | | |
| Operations Section Chief: S. Corn | | | | Night Ops: M. Jonsson | | | | |
| Branch Director: S. Ward (12) / E. Orre (12) / R. McLaughlin (12) | | | | Branch Safety: | | | | |
| Division/Group Supervisor: S. Forman (T) (12) | | | | Air Attack: | | | | |
| 5. Resources Assigned: | | | | | | | | |
| ** Resources Below in Bold are 12 Hour ** | | | | | | | | |
| Resource Identifier | ALS | LWD | Leader | Personnel | Request # | Hours | Reporting Location | |
| T/F PVT THUNDER BOLT | | | S. Gonzales | 15 | E-363 | 0700-1900 | ICP | |
| CRW T2 C-25 | | | T. Jensen | 20 | C-25 | 0700-1900 | ICP | |
| DOZ PVT E-210 | | | A. Bushey | 1 | E-210 | 0700-1900 | ICP | |
| DOZ PVT E-217 | | | R. Dudbah | 1 | E-217 | 0700-1900 | ICP | |
| DOZ PVT E-218 | | | J. Wyatt | 1 | E-218 | 0700-1900 | ICP | |
| DOZ PVT E-394 | | | T. Waterman | 1 | E-394 | 0700-1900 | ICP | |
| CHIP PVT E-481 | | | L. Owens | 1 | E-481 | 0700-1900 | ICP | |
| CHIP PVT E-500 | | | C. Wallace | 2 | E-500 | 0700-1900 | ICP | |
| EXC PVT E-458 | | | A. Fratarcangeli | 1 | E-458 | 0700-1900 | ICP | |
| EXC PVT E-548 | | | P. Leslie | 2 | E-548 | 0700-1900 | ICP | |
| EXC PVT E-454 | | | S. Clark | 1 | E-454 | 0700-1900 | ICP | |
| GRD PVT E-463 | | | K. Jones | 1 | E-463 | 0700-1900 | ICP | |
| W/T PVT E-234 | | | J. Bendall | 1 | E-234 | 0700-1900 | ICP | |
| W/T PVT E-236 | | | R. Santana | 2 | E-236 | 0700-1900 | ICP | |
| W/T PVT E-245 | | | D. Harms | 2 | E-245 | 0700-1900 | ICP | |
| W/T PVT E-248 | | | V. Reali | 1 | E-248 | 0700-1900 | ICP | |
| FALM O-370 | | | B. Toth | 1 | O-370 | 0700-1900 | ICP | |
| HEQB GRAHAM (T) | | | J. Graham | 1 | O-421 | 0700-1900 | ICP | |
| HEQB WHEELER | | | B. Wheeler | 1 | O-424 | 0700-1900 | ICP | |
| 6. Work Assignments: | | | | | | | | |
| Assess fire suppression needs and implement plan where directed. | | | | | | | | |
| 7. Special Instructions: | | | | | | | | |
| All resources in suppression repair are twelve hour resources. | | | | | | | | |
| Utilize CDF C1 while working North of I-580. When working in BR I or BR II, utilize appropriate command based off of location. | | | | | | | | |
| 8. Communications | | | | | | | | |
| Name | Ch | Function | Rx Freq | Rx Tone | Tx Freq | Tx Tone | Notes | |
| CDF C1 | 1 | COMMAND | 151.3550N | 103.5 (T8) | 159.3000N | 110.9 (T1) | MT DIABLO (USE WHILE NORTH OF I-580) | |
| VFIRE 24 | 12 | TACTICAL | 154.2725N | 156.7 (T6) | 154.2725N | 156.7 (T6) | | |
| CDF T15 | 13 | ROTARY A/G | 159.2700N | 192.8 (T16) | 159.2700N | 192.8 (T16) | ROTARY AIRCRAFT AIR TO GROUND | |
| CDF T20 | 14 | FIXED WING A/G | 159.3750N | 192.8 (T16) | 159.3750N | 192.8 (T16) | FIXED WING AIRCRAFT AIR TO GROUND | |
| CALCORD | 15 | MEDICAL | 156.0750N | 156.7 (T6) | 156.0750N | 156.7 (T6) | | |
| GUARD 27 | 16 | EMERGENCY | 168.6250N | | 168.6250N | 110.9 (T1) | AIR GUARD | |
| 9. Prepared by: Name: | | | | | | | | |
| Josh Anderson | | | RESL | | | Signature:  | | |
| ICS 204 | | Date/Time: 8/31/2020 | | 2200 | | Personnel Count: 55 | | |

NIMS IAP

CONTROLLED UNCLASSIFIED INFORMATION//BASIC

ASSIGNMENT LIST (ICS 204 WF)

CONTROLLED UNCLASSIFIED
INFORMATION//BASIC

| | | |
|--|---|--|
| 1. Incident Name: SCU LIGHTNING COMPLEX | 2. Operational Period: Date From: 09/01/20 Date To: 09/02/20 Time From: 0700 Time To: 0700 | 3. Branch Group Suppression Repair 2 |
| 4. Operations Personnel: | | Page 1 of 2 |

| | |
|--|------------------------------|
| Operations Section Chief: S. Corn | Night Ops: M. Jonsson |
| Branch Director: S. Ward (12) / E. Orre (12) / R. McLaughlin (12) | Branch Safety: |
| Division/Group Supervisor: R. Engler (12) | Air Attack: |

| 5. Resources Assigned: | | ** Resources Below in Bold are 12 Hour ** | | | | | |
|------------------------|-----|---|-------------------|-----------|--------------|------------------|--------------------|
| Resource Identifier | ALS | LWD | Leader | Personnel | Request # | Hours | Reporting Location |
| T/F MONTANA 2 | X | | K. Parks | 15 | E-483 | 0700-1900 | ICP |
| CRW T2 C-26 | | | M. Spence | 20 | C-26 | 0700-1900 | ICP |
| DOZ PVT E-211 | | | J. Ontano | 1 | E-211 | 0700-1900 | ICP |
| DOZ PVT E-216 | | | S. Maynard | 1 | E-216 | 0700-1900 | ICP |
| DOZ PVT E-220 | | | B. Dunn | 1 | E-220 | 0700-1900 | ICP |
| DOZ PVT E-393 | | | C. Graham | 1 | E-393 | 0700-1900 | ICP |
| CHIP PVT E-480 | | | J. Powell | 3 | E-480 | 0700-1900 | ICP |
| CHIP PVT E-503 | | | T. Wright | 2 | E-503 | 0700-1900 | ICP |
| EXC PVT E-455 | | | S. Forde | 1 | E-455 | 0700-1900 | ICP |
| GRD PVT E-423 | | | E. Butts | 1 | E-423 | 0700-1900 | ICP |
| GRD PVT E-460 | | | D. Warren | 1 | E-460 | 0700-1900 | ICP |
| GRD PVT E-462 | | | R. Mustin | 1 | E-462 | 0700-1900 | ICP |
| MAS PVT E-456 | | | S. Evans | 1 | E-456 | 0700-1900 | ICP |
| MAS PVT E-457 | | | R. Borst | 1 | E-457 | 0700-1900 | ICP |
| MAS PVT E-537 | | | J. List | 1 | E-537 | 0700-1900 | ICP |
| W/T PVT E-226 | | | L. Burton | 1 | E-226 | 0700-1900 | ICP |
| W/T PVT E-229 | | | D. Wood | 2 | E-229 | 0700-1900 | ICP |
| W/T PVT E-230 | | | D. Hughes | 2 | E-230 | 0700-1900 | ICP |

6. Work Assignments:
Assess fire suppression needs and follow plan where directed.

7. Special Instructions:
All resources assigned to suppression repair are twelve hours resources.
Utilize CDF C1 while working North of I-580. When working in BR I or BR II, utilize appropriate command based off of location.

8. Communications

| Name | Ch | Function | Rx Freq | Rx Tone | Tx Freq | Tx Tone | Notes |
|----------|----|----------------|-----------|-------------|-----------|-------------|--------------------------------------|
| CDF C1 | 1 | COMMAND | 151.3550N | 103.5 (T8) | 159.3000N | 110.9 (T1) | MT DIABLO (USE WHILE NORTH OF I-580) |
| VFIRE 24 | 12 | TACTICAL | 154.2725N | 156.7 (T6) | 154.2725N | 156.7 (T6) | |
| CDF T15 | 13 | ROTARY A/G | 159.2700N | 192.8 (T16) | 159.2700N | 192.8 (T16) | ROTARY AIRCRAFT AIR TO GROUND |
| CDF T20 | 14 | FIXED WING A/G | 159.3750N | 192.8 (T16) | 159.3750N | 192.8 (T16) | FIXED WING AIRCRAFT AIR TO GROUND |
| CALCORD | 15 | MEDICAL | 156.0750N | 156.7 (T6) | 156.0750N | 156.7 (T6) | |
| GUARD 27 | 16 | EMERGENCY | 168.6250N | | 168.6250N | 110.9 (T1) | AIR GUARD |

9. Prepared by: Name: Josh Anderson RESL Signature:

ICS 204 Date/Time: 8/31/2020 2200 Personnel Count: 56

ASSIGNMENT LIST (ICS 204 WF)

CONTROLLED UNCLASSIFIED
INFORMATION/BASIC

| | | |
|--|---|--|
| 1. Incident Name: SCU LIGHTNING COMPLEX | 2. Operational Period: Date From: 09/01/20 Date To: 09/02/20 Time From: 0700 Time To: 0700 | 3. Branch Group Suppression Repair 3 |
| 4. Operations Personnel: | | Page 1 of 1 |


| | |
|--|------------------------------|
| Operations Section Chief: S. Corn | Night Ops: M. Jonsson |
| Branch Director: S. Ward (12) / E. Orre (12) / R. McLaughlin (12) | Branch Safety: |
| Division/Group Supervisor: W. Barteau (12) | Air Attack: |

| 5. Resources Assigned: | ** Resources Below in Bold are 12 Hour ** | | | | | | |
|------------------------|---|-----|---------------------|-----------|--------------|------------------|--------------------|
| Resource Identifier | ALS | LWD | Leader | Personnel | Request # | Hours | Reporting Location |
| T/F WASHINGTON 426 | | | D. Holm | 20 | E-426 | 0700-1900 | ICP |
| DOZ PVT E-213 | | | A. Daniels | 1 | E-213 | 0700-1900 | ICP |
| DOZ PVT E-215 | | | L. Arias | 1 | E-215 | 0700-1900 | ICP |
| DOZ PVT E-221 | | | T. Funes | 1 | E-221 | 0700-1900 | ICP |
| DOZ PVT E-222 | | | S. Mahood | 1 | E-222 | 0700-1900 | ICP |
| DOZ PVT E-223 | | | L. Gill | 1 | E-223 | 0700-1900 | ICP |
| DOZ PVT E-395 | | | J. Willburn | 1 | E-395 | 0700-1900 | ICP |
| CHIP PVT E-552 | | | K. Kirby | 2 | E-552 | 0700-1900 | ICP |
| CHIP PVT E-553 | | | J. Morgan | 2 | E-553 | 0700-1900 | ICP |
| EXC PVT E-550 | | | D. Briski | 1 | E-550 | 0700-1900 | ICP |
| GRD PVT E-459 | | | K. Pereira | 1 | E-459 | 0700-1900 | ICP |
| GRD PVT E-464 | | | L. Mason | 1 | E-464 | 0700-1900 | ICP |
| W/T PVT E-239 | | | P. Yokoyama | 1 | E-239 | 0700-1900 | ICP |
| W/T PVT E-429 | | | R. Leaverton | 1 | E-429 | 0700-1900 | ICP |
| FALM O-371 | | | T. Davant | 1 | O-371 | 0700-1900 | ICP |
| HEQB BRIDGER | | | J. Bridger | 1 | O-483 | 0700-1900 | ICP |
| HEQB WALCZAK (T) | | | S. Walczak | 1 | O-403 | 0700-1900 | ICP |
| RESP JANSSEN | | | D. Janssen | 1 | O-582 | 0700-1900 | ICP |

6. Work Assignments:
Assess fire suppression needs and follow plan where directed.

7. Special Instructions:
Utilize CDF C1 while working North of I-580. When working in BR I or BR II, utilize appropriate command based off of location.

| 8. Communications | | | | | | | |
|-------------------|----|----------------|-----------|-------------|-----------|-------------|--------------------------------------|
| Name | Ch | Function | Rx Freq | Rx Tone | Tx Freq | Tx Tone | Notes |
| CDF C1 | 1 | COMMAND | 151.3550N | 103.5 (T8) | 159.3000N | 110.9 (T1) | MT DIABLO (USE WHILE NORTH OF I-580) |
| VFIRE 24 | 12 | TACTICAL | 154.2725N | 156.7 (T6) | 154.2725N | 156.7 (T6) | |
| CDF T15 | 13 | ROTARY A/G | 159.2700N | 192.8 (T16) | 159.2700N | 192.8 (T16) | ROTARY AIRCRAFT AIR TO GROUND |
| CDF T20 | 14 | FIXED WING A/G | 159.3750N | 192.8 (T16) | 159.3750N | 192.8 (T16) | FIXED WING AIRCRAFT AIR TO GROUND |
| CALCORD | 15 | MEDICAL | 156.0750N | 156.7 (T6) | 156.0750N | 156.7 (T6) | |
| GUARD 27 | 16 | EMERGENCY | 168.6250N | | 168.6250N | 110.9 (T1) | AIR GUARD |


9. Prepared by: Name: Josh Anderson RESL Signature: 

ICS 204 Date/Time: 8/31/2020 2200 Personnel Count: 39

MEDICAL PLAN (ICS 206)


| | | | | | | | |
|---|---|---|-----------------------------|---|------------------|-------------------------------------|-------------------------------------|
| 1. Incident Name: SCU LIGHTNING COMPLEX | | 2. Operational Period: Date From: 9/1/20 Date To: 9/2/20 Time From: 0700 Time To: 0700 | | | | | |
| 3. Medical Aid Stations: | | | | | | | |
| Name | Location | Contact Number/Freq | Paramedics | | | | |
| Cal Mat - California Medical Assistance Team | ICP | (530) 417-4560 | Yes | | | | |
| MERT | ICP | (530) 417-4560 | <input type="checkbox"/> No | | | | |
| Gilroy Camp | Christmas Hill Park | (530) 417-4560 | Yes | | | | |
| 4. Transportation (indicate air or ground): | | | | | | | |
| Ambulance Service | Location | Contact Number | Level of Service | | | | |
| M801, M58 (Ground) | Branch I | Lightning Communication | ALS | | | | |
| M7191, M7702, M815 (Ground) | Branch II | Lightning Communication | ALS | | | | |
| M50, M57 (Ground) | Branch II | Lightning Communication | ALS | | | | |
| Stanford Life Flight (Air) | Stanford - Santa Clara County | Lightning Communication | ALS | | | | |
| CAL FIRE Copter 106 (Day Hoist) | Incident Helibase | Lightning Communication | BLS | | | | |
| Santa Barbara County Fire C-4(24 hoist) | Incident Helibase | Lightning Communication | BLS | | | | |
| 5. Hospitals: | | | | | | | |
| Hospital Name | Address, Lat & Long Helipad | Contact Number(s)/ Frequency | Travel Time | | Trauma Center | Burn Center | Helipad |
| | Air | | Ground | | | | |
| St. Louise Regional Medical Center | 9400 No Name Uno, Gilroy N37°02'08.24, W-121°34'16.15 | (408) 848-8680 | :31 | 1:35 | EDAT | <input type="checkbox"/> | <input checked="" type="checkbox"/> |
| Santa Clara Valley Medical | 751 S. Bascom Ave. San Jose N37°18'50.30, W-121°56'03.28 | (408) 885-6912 | :22 | 1:18 | Level 1 | <input checked="" type="checkbox"/> | <input checked="" type="checkbox"/> |
| Eden Medical Center Sutter Health | 20103 Lake Chabot Rd Castro N37°41'56.28, W-122°05'21.36 | (510) 727-3015 | :22 | 1:18 | Level 2 | <input type="checkbox"/> | <input checked="" type="checkbox"/> |
| Stanford Health Care - ValleyCare Medical Center | 5555 W. Las Positas Blvd., Pleasanton N37°41'39.93, W-121°52'51.22 | (925) 416-6525 | :18 | 1:06 | Level 1 | <input type="checkbox"/> | <input checked="" type="checkbox"/> |
| 6. Special Medical Emergency Procedures | | | | | | | |
| <p>Line Emergency Crew Supervisor will contact Division Supervisor with patient complaint/condition and location. - Division Group Supervisor Contacts: 1. Closest EMS resource 2. Communications Unit - Communications Unit Contacts: 1. Ground or Air ambulance as requested. 2. Operations 3. Safety 4. Medical Unit - Division Supervisor or designee will serve as point of contact and run medical emergency on assigned channel. 1. A pre-assigned tactical frequency (i.e. CALCORD) should be used for IWI and only for duration of the emergency. - Communications Unit will clear the Command channel for emergency traffic as needed for duration of the need.</p> <p>Camp Emergency Contact Medical Unit with patient complaint/condition and location. Medical staff will respond to stabilize the patient. - Medical Unit contacts 1. Communications 2. Safety 3. Logistics 4. Operations 5. Crew Supervisor 6. Comp/Claims</p> | | | | <p>Injury Reporting Procedures</p> <p>Nature of Injury: _____ Location of Patient: _____ Point of Contact: _____ Transportation Requested by: Air ___ Ground ___ Point of Pick-Up: _____ Lat: _____ Long: _____ Patient Unit ID: _____ Is an EMT with Patient: Yes ___ No ___ Age: _____ Sex: Male ___ Female ___</p> <p>All Emergencies - Secure the area and identified witnesses for later investigation. Keep accurate log of events.</p> | | | |
| <input type="checkbox"/> Check box if aviation assets are utilized for rescue. If assets are used, coordinate with Air Operations. | | | | | | | |
| 7. Prepared by (Medical Unit Leader): J. Segura R. Beeson (T) | | | | Signature: | | | |
| 8. Approved by (Safety Officer): J. Buchmeier J. Novak (T) | | | | Signature: | | | |
| ICS 206 | | NIMS IAP | | Date/Time: | | 8/31/2020 17:30 | |

ICS 205 - INCIDENT RADIO COMMUNICATIONS PLAN

| 1. Incident Name: SCU LIGHTNING COMPLEX BRANCH I | | 2. Date/Time Prepared Date: 08/31/2020 Time: 1930 | | 3. Operational Period: Date From: 09/01/20 Time From: 0700 | | Date To: 09/02/20 Time To: 0700 | | |
|--|----------------|--|--------------------|--|-------------|------------------------------------|-------------|---|
| 4. Communications | | | | | | | | |
| Ch# | Function | Name | Assigned To | Rx Freq | Rx Tone | Tx Freq | Tx Tone | Notes |
| 1 | COMMAND | CDF C1 | | 151.3550N | 103.5 (T8) | 159.3000N | 110.9 (T1) | MT DIABLO (USE WHILE NORTH OF I-580) |
| 2 | COMMAND | NIFC C3 | ALL BRANCHES | 170.4250N | 131.8 (T3) | 168.0750N | 131.8 (T3) | MT OSO LINKED W/CMD 10, 11, 38, & 40 |
| 3 | COMMAND | NIFC C10 | ALL BRANCHES | 170.4125N | 131.8 (T3) | 165.9625N | 131.8 (T3) | MT PACHECO LINKED W/CMD 3, 11, 38, & 40 |
| 4 | COMMAND | NIFC C11 | ALL BRANCHES | 170.6875N | 131.8 (T3) | 166.5750N | 131.8 (T3) | MT ALLISON LINKED W/CMD 3, 10, 38 & 40 |
| 5 | COMMAND | NIFC C38 | ALL BRANCHES | 172.6750N | 131.8 (T3) | 163.0375N | 131.8 (T3) | LOMA PRIETA PEAK LINKED W/CMD 3, 10, 11, & 40 |
| 6 | COMMAND | NIFC C40 | ALL BRANCHES | 173.7500N | 131.8 (T3) | 163.8250N | 131.8 (T3) | COPERNICUS PK LINKED W/CMD 3, 10, 11, & 38 |
| 7 | TACTICAL | CDF T29 | DIV V | 151.3475N | 192.8 (T16) | 151.3475N | 192.8 (T16) | |
| 8 | TACTICAL | CDF T30 | DIV Q / R | 151.3925N | 192.8 (T16) | 151.3925N | 192.8 (T16) | |
| 9 | TACTICAL | VTAC12 | DIV I | 154.4525N | 156.7 (T6) | 154.4525N | 156.7 (T6) | |
| 10 | | | | | | | | |
| 11 | TACTICAL | VTAC14 | DIV J / K / L | 159.4725N | 156.7 (T6) | 159.4725N | 156.7 (T6) | OPS BRIEFING CHANNEL |
| 12 | TACTICAL | VFIRE 24 | SUPPRESSION REPAIR | 154.2725N | 156.7 (T6) | 154.2725N | 156.7 (T6) | |
| 13 | ROTARY A/G | CDF T15 | ALL BRANCHES | 159.2700N | 192.8 (T16) | 159.2700N | 192.8 (T16) | ROTARY AIRCRAFT AIR TO GROUND |
| 14 | FIXED WING A/G | CDF T20 | ALL BRANCHES | 159.3750N | 192.8 (T16) | 159.3750N | 192.8 (T16) | FIXED WING AIRCRAFT AIR TO GROUND |
| 15 | MEDICAL | CALCORD | ALL BRANCHES | 156.0750N | 156.7 (T6) | 156.0750N | 156.7 (T6) | |
| 16 | EMERGENCY | GUARD 27 | ALL BRANCHES | 168.6250N | | 168.6250N | 110.9 (T1) | AIR GUARD |
| 17 | | | | | | | | |
| 18 | | | | | | | | |
| 19 | | | | | | | | |
| 20 | EMERGENCY | GUARD 27 | ALL BRANCHES | 168.6250N | | 168.6250N | 110.9 (T1) | AIR GUARD |
| 5. Special Instructions | | | | | | | | |
| TO CONFIRM YOU HAVE THE MOST CURRENT CLONE, ENSURE YOUR DISPLAY OF CHANNEL 16 OR 20 MATCHES CHANNEL 16 OR 20 OF THE 205 - HEIGHT AND POWER ARE KEY WHEN USING RADIOS; BE AT A HIGH POINT, USE A MOBILE IF POSSIBLE, AND USE RADIO RELAYS WHEN NEEDED | | | | | | | | |
| Prepared by (Communications Unit Leader): Name: John Brooks, IMT6 | | | | Signature:  | | | | |
| ICS 205 - CONTROLLED UNCLASSIFIED INFORMATION//BASIC | | | | Date/Time: 08/31/20 1930 | | | | |

ICS 205 - INCIDENT RADIO COMMUNICATIONS PLAN

CONTROLLED UNCLASSIFIED INFORMATION/BASIC

| 1. Incident Name: SCU LIGHTNING COMPLEX BRANCH II | | 2. Date/Time Prepared Date: 08/31/2020 Time: 1930 | | 3. Operational Period: Date From: 09/01/20 Time From: 0700 | | Date To: 09/02/20 Time To: 0700 | | |
|---|----------------|---|--------------------|--|-------------|------------------------------------|-------------|---|
| 4. Communications | | | | | | | | |
| Ch# | Function | Name | Assigned To | Rx Freq | Rx Tone | Tx Freq | Tx Tone | Notes |
| 1 | | | | | | | | |
| 2 | COMMAND | NIFC C3 | ALL BRANCHES | 170.4250N | 131.8 (T3) | 168.0750N | 131.8 (T3) | MT OSO LINKED W/CMD 10, 11, 38, & 40 |
| 3 | COMMAND | NIFC C10 | ALL BRANCHES | 170.4125N | 131.8 (T3) | 165.9625N | 131.8 (T3) | MT PACHECO LINKED W/CMD 3, 11, 38, & 40 |
| 4 | COMMAND | NIFC C11 | ALL BRANCHES | 170.6875N | 131.8 (T3) | 166.5750N | 131.8 (T3) | MT ALLISON LINKED W/CMD 3, 10, 38 & 40 |
| 5 | COMMAND | NIFC C38 | ALL BRANCHES | 172.6750N | 131.8 (T3) | 163.0375N | 131.8 (T3) | LOMA PRIETA PEAK LINKED W/CMD 3, 10, 11, & 40 |
| 6 | COMMAND | NIFC C40 | ALL BRANCHES | 173.7500N | 131.8 (T3) | 163.8250N | 131.8 (T3) | COPERNICUS PK LINKED W/CMD 3, 10, 11, & 38 |
| 7 | TACTICAL | CDF T31 | DIV M / N | 159.3825N | 192.8 (T16) | 159.3825N | 192.8 (T16) | |
| 8 | | | | | | | | |
| 9 | TACTICAL | VTAC13 | DIV O | 158.7375N | 156.7 (T6) | 158.7375N | 156.7 (T6) | |
| 10 | TACTICAL | VFIRE 23 | DIV T | 154.2950N | 156.7 (T6) | 154.2950N | 156.7 (T6) | |
| 11 | | | | | | | | |
| 12 | TACTICAL | VFIRE 24 | SUPPRESSION REPAIR | 154.2725N | 156.7 (T6) | 154.2725N | 156.7 (T6) | |
| 13 | ROTARY A/G | CDF T15 | ALL BRANCHES | 159.2700N | 192.8 (T16) | 159.2700N | 192.8 (T16) | ROTARY AIRCRAFT AIR TO GROUND |
| 14 | FIXED WING A/G | CDF T20 | ALL BRANCHES | 159.3750N | 192.8 (T16) | 159.3750N | 192.8 (T16) | FIXED WING AIRCRAFT AIR TO GROUND |
| 15 | MEDICAL | CALCORD | ALL BRANCHES | 156.0750N | 156.7 (T6) | 156.0750N | 156.7 (T6) | |
| 16 | EMERGENCY | GUARD 27 | ALL BRANCHES | 168.6250N | | 168.6250N | 110.9 (T1) | AIR GUARD |
| 17 | | | | | | | | |
| 18 | | | | | | | | |
| 19 | | | | | | | | |
| 20 | EMERGENCY | GUARD 27 | ALL BRANCHES | 168.6250N | | 168.6250N | 110.9 (T1) | AIR GUARD |
| 5. Special Instructions | | | | | | | | |
| <p>TO CONFIRM YOU HAVE THE MOST CURRENT CLONE, ENSURE YOUR DISPLAY OF CHANNEL 16 OR 20 MATCHES CHANNEL 16 OR 20 OF THE 205 - HEIGHT AND POWER ARE KEY WHEN USING RADIOS; BE AT A HIGH POINT, USE A MOBILE IF POSSIBLE, AND USE RADIO RELAYS WHEN NEEDED</p> | | | | | | | | |
| 6. Prepared by (Communications Unit Leader): Name: John Brooks, IMT6 | | | | Signature:  | | Date/Time: 08/31/20 1930 | | |
| ICS 205 - CONTROLLED UNCLASSIFIED INFORMATION/BASIC | | | | | | | | |

TRAINING MESSAGE

DEMOBING??

TRAINERS

PLEASE REMEMBER TO COMPLETE THE FOLLOWING DOCUMENTS FOR YOUR TRAINEES:

- **TASK BOOK** - SIGN & DATE THE COMPLETED TASKS
- **ICS 225** - PLEASE STRIVE TO GIVE YOUR TRAINEE AN IN-DEPTH PERFORMANCE RATING
- **TASK BOOK EVALUATION RECORD** – PLEASE FILL OUT ALL SECTIONS AT THE END OF THE TRAINING ASSIGNMENT

TRAINEES

PRIOR TO DEMOBING PLEASE BRING THE FOLLOWING TO TRAINING:

- **TASK BOOK** IF YOU HAVE ALL YOUR
- **ICS 225** DOCUMENTS, IT IS NOT
- **TASK BOOK EVALUATION RECORD** NECESSARY TO BRING YOUR TRAINER WITH YOU TO TRAINING

DON'T TRAIN UNTIL YOU GET IT RIGHT, TRAIN UNTIL YOU CAN'T GET IT WRONG!!

Any questions please contact the Training Specialist:

Shane Vargas (530) 410-4225

Dottie Shaw (619) 971-1701

Ian Crossley (530) 681-5100



CAL FIRE INCIDENT MANAGEMENT TEAM 6

Jeff Veik– INCIDENT COMMANDER



DEMOBILIZATION PLAN - SUMMARY SCU Lightning Complex CA-SCU-005740

GENERAL INFORMATION

The Demobilization Plan is developed to facilitate the orderly removal and checkout of resources on the incident. By definition; surplus personnel are available for release if they have rested for a minimum of 8 hours, are cleaned up, outfitted and have a vehicle ready to depart to their next destination.

GENERAL GUIDELINES

- **NO RESOURCES WILL LEAVE THE INCIDENT UNTIL AUTHORIZED TO DO SO BY THE DEMOB UNIT.**
- Efforts will be made to ensure that all released personnel arrive at their destination prior to 2200 hours.
- All Resources will arrive at the Demobilizations Unit at their scheduled time Only.
- All government and hired vehicles leaving the incident will have a safety inspection. If a vehicle is within 1,000 miles of a "B" service, it is the responsibility of the resource to contact Ground Support and have an oil change prior to their scheduled demobilization time.
- **All Rental Vehicles will receive a safety inspection prior to leaving the incident.**
- All trainees are to keep their time up to date and report to the Training Specialist with their task books and evaluations prior to completion of the demobilization process.
- All strike team leaders are responsible to call **North Ops at 1-800-237-3703** immediately upon being released from the incident

RESPONSIBILITIES

Unit Leaders will declare resources excess to their **Section Chief**. **Section Chiefs** will declare excess resources to the Planning Section Chief through the **Resource Unit Leader**. This should be done 36 hours in advance of anticipated release. **Use the Declaration of Excess Resources sheet or General Message Form (ICS-213) to list all excess resources.** Include the resource name, request number, name of person, date and time of declared excess, and time in which the resource will be eligible to leave. Send to the **RESOURCE UNIT** where the resource will be determined to be surplus to the incident. Surplus resources will then be able to report to the **DEMOB UNIT**, receive a Demobilization Checkout Form (ICS 221), get the appropriate ICS 221 signatures, and then return the completed ICS 221 to the DEMOB UNIT prior to final release or reassignment. Resources are not to contact **North Ops** or the expanded dispatch center unless instructed to do so by the Demobilization Unit.

RELEASE PRIORITIES

1. **Organized fire departments**
2. **OES engines**
3. **Hired personnel and equipment**
4. **Other agencies (USFS, BLM, etc.)**
5. **Out of region CAL FIRE forces**
6. **Within Region CAL FIRE Forces**
7. **Unit CAL FIRE Forces**

TRAVEL INFORMATION

All resources will meet agency specific requirements on hours of travel per day. For CAL FIRE hand crews, a full 24 hour reset period shall be adhered to before departing from the incident. After a crew's last operational period they shall begin the demobilization release procedure during their 24 hour off shift. In addition, they must use the following complete 24-hour period as reset time before they depart from the incident.

ATTN: Federal Resources (specifically Federal Contracted Resources/ADs)

RE: Virtual Finance Support

If you are assigned to a CAL FIRE managed incident, you have noticed that there is no "federal" time unit on site. We have developed a virtual finance section to provide you with your invoices/time sheets. We will need for you to **scan and email** your documents to the R5.CalFire.Support@firenet.gov email address. (The CAL FIRE finance section may have a scanner available if you do not have a "scanning" app on your phone and/or computer.) In the subject line enter:

TIME - Resource # - Company/Person Name – Attachment description - Fire Name/Number

Contract Crew/Equipment:

We need for you to send us the following information (even if you have submitted it to the CAL FIRE finance unit):

- Contact name, phone number, and email for on-site "leader"
- Resource Order
- Contract (Pages 1-2 and any additional pages referencing equipment/resource information)
- Crew Manifest
- Inspection (if one was done)
- Shift Tickets (signed by you and your incident supervisor) / CTRs (signed by your incident supervisor)

Administratively Determined (AD) Resources:

We need for you to send us the following information:

- Contact phone number and email
- Resource Order
- Casual Hire Form
- CTRs (signed by your incident supervisor)

Federal Employees:

As of right now, we are not planning to create OF-288s for Federal "regular" employees. Each of you can utilize your CTRs as your backup documentation for submitting your time sheets.

IF, however you require an OF-288, we will do our best to accommodate your needs. If you are claiming Hazard Pay, just like always, you must provide a justification for the claim ("H=Hazard") is NOT enough. Use "action verbs" to explain what/why you are claiming the hazard.

WHEN YOU ARE CLOSE TO DEMOB:

- Give Finance a "Courtesy Email" 1-2 days prior to make sure all your documents have been received.
- Submit all time documentation (including travel home) ahead of demob.
- Send an email the morning of your demob to the Support email so the demob process can be started from the virtual finance group.

EMAIL: R5.CalFire.Support@firenet.gov

Please **do not** wait until the end of your assignment to get us your information. Since we are virtual, the process will take additional time.

eFC-33 INITIAL INPUT FORM

1 2 3 4 5 6 7

| | | | | | | |
|----------------|--|--|--|--|--|--|
| Request Number | | | | | | |
|----------------|--|--|--|--|--|--|

Overhead: complete one form per person.
All Others: complete one form per vehicle.

| | | | | | |
|-------|--------|-----------------|---------------|---------------------|-------------------|
| State | Agency | Incident Number | Incident Name | Incident Index Code | Incident PCA Code |
| CA | | | | | |

| | | |
|-------------|-------------------------------|--------------------------------|
| Strike Team | Resource ID - Fire Assignment | Home Station / Office Location |
| S T | E-3499 | PASO ROBLES |

| | | | | | | |
|---------------------------|---|-------------------------------------|-------------|-----------|---------|-------------------|
| YOUR NORMAL DUTY SCHEDULE | 24 Hr 8-8 24 Hr 7-7 Other | Portal to Portal? | YOUR AGENCY | HOME UNIT | COMMIT | YOUR CELL PHONE # |
| | <input checked="" type="checkbox"/> One Box | <input checked="" type="checkbox"/> | CAL FIRE | S L U | RELEASE | |

| PERSONNEL | Schedule | A | B | Other | Last Name | First Name | Rank or Classification | # of Regular Duty Scheduled Hours per Day | | | | | | | | | | |
|------------|---|---|---|-------|-----------|------------|------------------------|---|-----|-----|-----|-----|-----|-----|--|----|----|----|
| | | | | | | | | Mon | Tue | Wed | Thu | Fri | Sat | Sun | | | | |
| EMPLOYEE 1 | | | | | | | | | | | | | | | | | | |
| EMPLOYEE 2 | | | | | | | | | | | | | | | | | | |
| EMPLOYEE 3 | | | | | | | | | | | | | | | | | | |
| EMPLOYEE 4 | | | | | | | | | | | | | | | | | | |
| EMPLOYEE 5 | | | | | | | | | | | | | | | | | | |
| EMPLOYEE 6 | | | | | | | | | | | | | | | | | | |
| | <input checked="" type="checkbox"/> One Box | | | | Johnson | Robert | FC | | | | | | | | | 24 | 24 | 24 |

| | | | | | | | | | | | | | | | | | | |
|-----------|----------|---|---|-------|-------------------|----------|-----------------|------------|--------------------|---|---|--|--|--|--|--|--|--|
| VEHICLE | Schedule | A | B | Other | If Other, explain | Radio ID | Kind of Vehicle | ID No/X No | Chainsaw Quantity: | | | | | | | | | |
| | | | | | | | | | 0 | 2 | X | | | | | | | |
| VEHICLE 1 | | | | | | | | | | | | | | | | | | |
| VEHICLE 2 | | | | | | E-3499 | FTH | | | | | | | | | | | |



Put a Dozer and it's Transport on a single form. All others, use one form per individual vehicle.

ADDITIONAL INFO

SHIFT TICKET EXAMPLE

| EMERGENCY SHIFT TICKET and EVALUATION FORM | | | | | Contractor Name | |
|--|-------------|---------------------------------|--|-----------------------------|--|---|
| Incident or Project Name SCU LIGHTNING COMPLEX | | | Incident Number CASCU 005740 | Request Number E# | DOZER DUDE | |
| Agreement Number XXX - 000000 - 00 | | | | | Operator #1 BOB SMITH | Operator #2 TOM SMITH |
| Equipment Make CAT | | | Equipment Model / Type D6XM | | Operator Furnished By: <input checked="" type="checkbox"/> Contractor <input type="checkbox"/> Government | |
| Serial Number 111111 | | | Licence Number 111111 | | Operating Supplies Furnished By: <input checked="" type="checkbox"/> Contractor <input type="checkbox"/> Government | |
| Equipment Use (Circle) Hours Days / Miles | | | | | Equipment Status | |
| Date Mo / Day | Start | Stop | Work | Assignment | <input checked="" type="checkbox"/> Inspected | <input checked="" type="checkbox"/> Under Agreement |
| 8/17 | 0700 | 2400 | 17 | DIV M | <input type="checkbox"/> Released by Government | <input type="checkbox"/> Withdrawn by Contractor |
| 8/18 | 0001 | 0700 | 7 | DIV M | NO DAMAGE/ NO CLAIMS | |
| | | | | | | |
| | | | | | | |
| Vendor Rating | | | | | Govt. Rep. Name and Position - PRINT | |
| | Poor* | Avg. | Good | Exc. | N/A | |
| Met Performance Expectations | | | | | Govt. Rep. Signature | |
| Equipment in Safe Working Condition | | | | | Mike Weber | |
| Operator Skill Level | | | | | Contractor Signature | |
| Operates Safely | | | | | Bob Smith | |
| Operator's Cooperation Level | | | | | Date | Time |
| Overall Performance | | | | | 08/18/20 | 0800 |
| * NOTE: Any rating of POOR requires an explanation in Comment Section. | | | | | CALFIRE 297 | |
| **Final evaluation or for more documentation, use an ICS Form 230 or equivalent. | | | | | (Rev 3-2011) | |
| Pink - Finance | | Blue - Home Unit HE Coordinator | | Yellow - Vendor | | White - Govt Representative |

Vendor Rating must be done.

| EMERGENCY SHIFT TICKET and EVALUATION FORM | | | | | Contractor Name | |
|--|-------------|---------------------------------|---|-----------------------------------|--|--|
| The responsible Government Officer will complete this form each shift | | | | | DUDE TRANSPORT | |
| Incident or Project Name SCU LIGHTNING COMPLEX | | | Incident Number CASCU 005740 | Request Number E # Here | BOB SMITH TOM SMITH | |
| Agreement Number XXX - 000000 - 00 | | | | | Operator Furnished By: <input checked="" type="checkbox"/> Contractor <input type="checkbox"/> Government | |
| Equipment Make TRANSPORT/ KENWORTH | | | Equipment Model / Type COZAD TRAILER /26 WHEELS | | Operating Supplies Furnished By: <input checked="" type="checkbox"/> Contractor <input type="checkbox"/> Government | |
| Serial Number 1XP3ESMP14239012 | | | Licence Number 9999999 | | Equipment Status | |
| Equipment Use (Circle) Hours Days / Miles | | | | | <input checked="" type="checkbox"/> Inspected <input checked="" type="checkbox"/> Under Agreement | |
| Date Mo / Day | Start | Stop | Work | Assignment | <input type="checkbox"/> Released by Government | <input type="checkbox"/> Withdrawn by Contractor |
| 8/17 | 0700 | 2400 | 17 | DIV M | NO DAMAGE/ NO CLAIMS | |
| 8/18 | 0001 | 0700 | 7 | DIV M | | |
| | | | | | | |
| Vendor Rating | | | | | Govt. Rep. Name and Position - PRINT | |
| | Poor* | Avg. | Good | Exc. | N/A | |
| Met Performance Expectations | | | | | Govt. Rep. Signature | |
| Equipment in Safe Working Condition | | | | | Mike Weber | |
| Operator Skill Level | | | | | Contractor Signature | |
| Operates Safely | | | | | Bob Smith | |
| Operator's Cooperation Level | | | | | Date | Time |
| Overall Performance | | | | | 08/18/20 | 0800 |
| * NOTE: Any rating of POOR requires an explanation in Comment Section. | | | | | CALFIRE 297 | |
| **Final evaluation or for more documentation, use an ICS Form 230 or equivalent. | | | | | (Rev 3-2011) | |
| Pink - Finance | | Blue - Home Unit HE Coordinator | | Yellow - Vendor | | White - Govt Representative |

Vendor Rating must be done.

Turn shift tickets into Time Unit.



PUBLIC INFORMATION



Official Sources of Public Information

Incident Information Line: 916-618-3195

Incident Media Line: 925-588-6809

Incident Website: www.fire.ca.gov

Email Signup: <https://tinyurl.com/CALFIREMEDIA>



EMAIL SIGN UP



EVACUATION MAPS

| STATUS | |
|--------------------------------------|------------------------------|
| Incident Start Date: August 16, 2020 | Incident Start Time: 4:00 AM |
| Acreage: | Containment: |
| Cause: Under Investigation | Total Personnel: |

Media Law

The California State Penal Code Section 409.5(d) allows the news media to enter scenes of disaster, riot, or civil disturbance. Properly identified members of the news media should not be restricted from entering locations specified within the code. However, this does not include crime scenes, and does not imply that the news media may interfere with incident operations while they are in the areas of concern. If entering such a location that is hazardous, they should be advised; media access cannot be prevented for safety reasons unless their presence would impede CAL FIRE's mitigation of the incident or the disturbing of evidence. When working around the media, remember:

- Media **is not permitted** on private property without the property owners permission.
- If approached and questioned by the media and or the public, talk about your assignment or task at hand. Remember to wear all the appropriate PPE.
- If needed call for an incident PIO through the chain of command.
- Never speculate, give opinions or speak for others.
- There is no such thing as an "off the record" comment.

CAL FIRE Social Media Policy (Social Media 0691)

Social Media is increasingly being used by public agencies, the media as well as the public. This form of communication continues to grow rapidly in order to supply the instant gratification needs of society. Therefore when on a CAL FIRE incident you will adhere to the CAL FIRE Social Media Policy, 0691. You can get further information about the CAL FIRE Social Media Policy from the incident Public Information Officer. While assigned to the incident, there will be no posting of:

- Inappropriate information or materials, no opinions, no endorsements, inappropriate pictures or videos

Lost and Found

The Information Section will manage Lost and Found items for the incident. If you have lost an item leave your contact information and what you have lost at the Information Section. If you have found an item on the incident bring the item to the Information Section with your contact information as well.

Incident Base Camp Mailing Address

c/o Public Information Office/Trailer
4501 Pleasanton Ave.
Pleasanton, CA 94566
Pleasanton Ave Street Entrance

Peer Support Team Message:

INCIDENT PEER SUPPORT:

We have a few people on the incident for any peer support related needs. The best way to get a hold of them is to call them directly.

John Kiszka-530 598-2615

Amber Henderson-805 794-1690

Clinician

Jill Gustafson-530 957-8020

or

CAL FIRE Peer Support/Helpline

916-445-4337

Below are other Team Members not on the incident who can also be contacted directly:

Tony Howard 916-224-1543

Mike Aiello 916-584-0548

Warren Parrish 916-823-6641

Shawna Powell-530 717-0667

Nikole Schutz 916-709-0434

Amy Head 916-956-3277

Chris Lomanto 916-247-6974

Connie Quarisa 916-213-8697

In addition to peer support, if there is a need, we can have a culturally competent Clinician available on the incident that could meet with you on an individual and/or group basis.

Watch for the signs and symptoms of stress in yourself and the people around you. Try and stay positive and get much needed rest when you can. We can do this, together!

Stay Healthy, Stay Alert and Stay Strong!

CAL FIRE Employees can also contact EAP directly at: 1-866-327-4762

FIRE SUPPRESSION REPAIR

SCU LIGHTNING COMPLEX

CA SCU-005740

Fire Suppression Repair (FSR) is the repair of damage caused directly from fire suppression activities, it is not the rehabilitation of areas damaged by the fire. See also CAL FIRE Handbook 7773

Start Early!

Repair work should start as soon as practical but shall not hamper or conflict with fire suppression actions or compromise firelines.

When operationally feasible, Divisions can assist by flattening berms and constructing waterbars on dozer lines and underslung hand lines. Scattered trash, missed hose, etc. shall be collected and deposited at Drop Points for backhaul. Police your areas.

Repair Work Inventory:

Assistance is requested in identifying FSR needs. Please provide location, type of repair and a reporting contact. Reporting can be done:

- In-person to the FSR Branch at Building "R" at the ICP
- Through your chain of command
- Scu.lightning.fsr@gmail.com
- Exported Avenza line and point layers are preferable but we can accept most types of GPS and text intel. Include a picture(s) if available

Landowners reporting damage should be relayed to the FSR Branch. The FSR Branch has foresters, archaeologists and other environmental who will evaluate each site, develop a repair plan, and schedule the repair with appropriate resources.

Infrastructure Damage:

Report the location and type of suppression damage to infrastructure. Common examples include:

- Fences /gates
- Culvert/ Bridge/ Other watercourse crossings
- Developed water sources
- Utility distribution line; above/below ground.
- Restore barriers on roads previously closed but opened for suppression activities.
- Remove trash and debris, including flagging and signs when no longer needed.
- Misc. damage to infrastructure.

Natural Resource Damage:

This category represents repairing problems caused by fire suppression activities (direct effect) and to prevent likely future problems such as accelerated erosion caused by winter rains (indirect effect).

- Construct drivable waterbars or rolling dips on unsurfaced roads.
- Construct waterbars on all dozer and hand lines according to the following Specifications: Water bars shall be cut diagonally into firm soil at least 6" deep and have a berm at least 12" in height. Water bar should have a 30-45 degree angle to the fall line. Outlets must be open and directed onto the least erodible material possible.

| | | | | |
|-----------------------------------|-------|--------|--------|------|
| Slope or Road Gradient (%) | 0-10% | 11-25% | 26-50% | >50% |
| Waterbreak Spacing | 100' | 100' | 75' | 50' |

- Flatten berms along roads and firelines to maintain natural drainage patterns. If berms are necessary along a road segment, cut breach outlets periodically.
- Remove soil and debris deposited by fire suppression activities from drainage facilities and culvert inlets.
- Slash and soil deposited into watercourses shall be removed and stabilized as feasible.
- Work within 100 feet of a watercourse, cultural site or other sensitive location shall be performed with guidance from the FSR Group.
- Slash from felled trees adjacent to roads shall be lopped and scattered, chipped or piled for burning.
- Scattered trash, missed hose, etc. shall be collected and deposited at Drop Points. Police your areas.

Cultural Sites:

Immediately report the location of any known or suspected archaeological/historical site through the chain of command to the incident Archaeologist and/or the FSR Branch. Indicate the type of impact, including retardant coverage. Avoid further disturbance if operationally feasible and flag the site perimeter. Otherwise, use the least disturbing suppression methods possible. Removing artifacts or vandalizing a site is a violation of State and Federal law.

Comp Claims Issues:

Damaged resources that are too large or complex for the Fireline Suppression Group to handle shall be turned over to the IMT #6 Comp/Claims Unit. Examples of such issues include damage to pavement, bridges, pipelines, etc.

Fire Suppression Repair Report Form

List any special type of material/equipment/personnel needed. (Fencing materials, tools, dozer, backhoe, stakeside, handcrew, etc.) Provide landowner contact info if known.

Division _____ Form completed by _____ Phone _____ Date _____

Work needed/Location

Fence/gate repair _____

Waterbars _____

Road Repair _____

Watercourse cleanout _____

Culvert cleanout/repair _____

Trash/Hose pickup _____

Hazard Trees _____

Other _____

SCU LIGHTNING COMPLEX INCIDENT FACILITIES MAP

CA SCU 005740

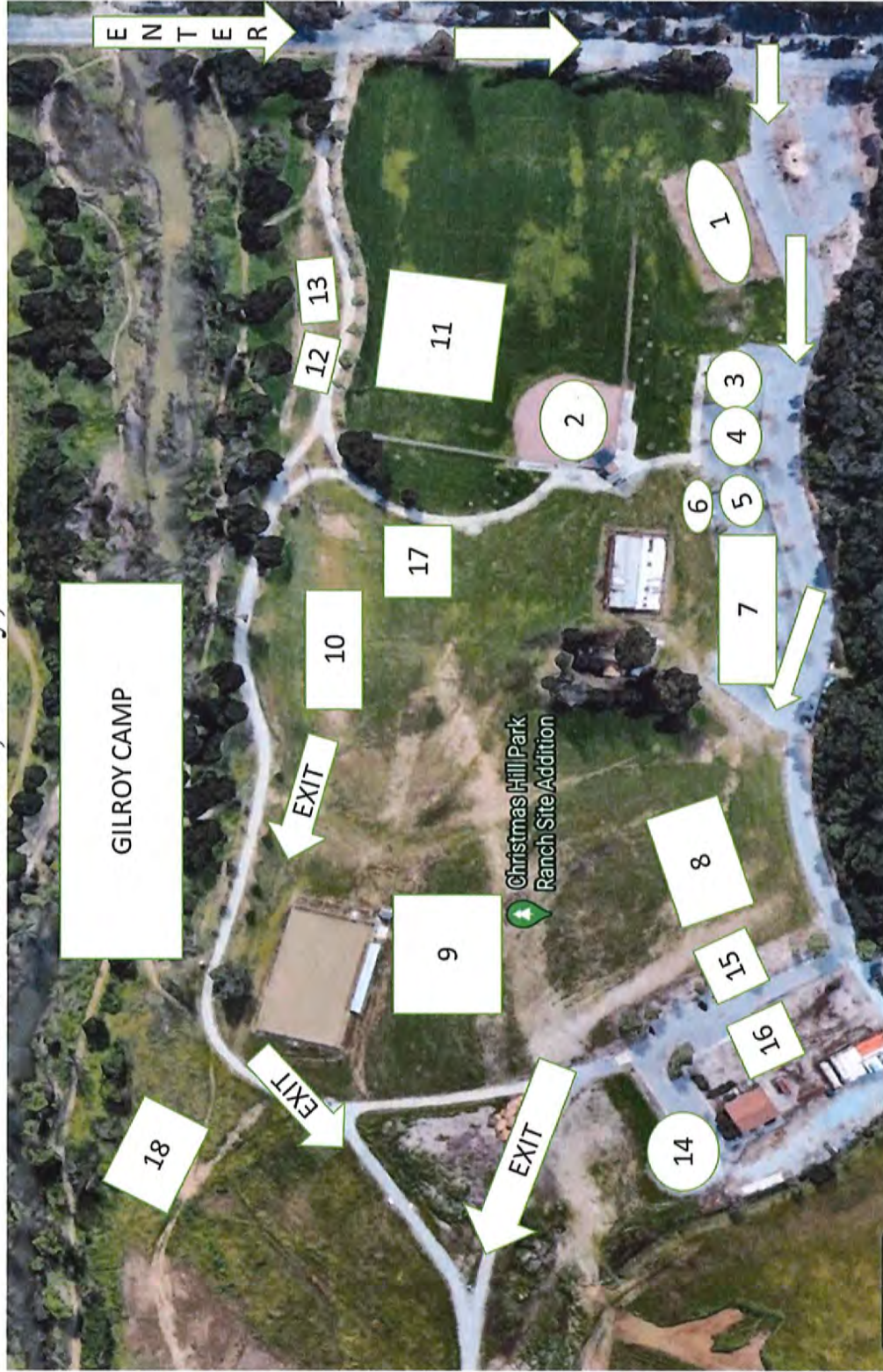


ALAMEDA COUNTY FAIRGROUNDS PLEASANTON
Full Grounds Map (Staff/Clients)

| | | | | | | | | | | | | | | | | | |
|---|-----------------|----|---------------|----|-----------------|----|------------------|----|-----------------|----|---------------------------|----|---------------|----|------------|----|-----------|
| 1 | Ground Support | 6 | CCC Sleeping | 11 | Chainsaw Repair | 16 | Showers | 21 | Motels | 26 | Potable, Grey Water | 31 | Sherriff ALCO | 36 | Operations | 41 | IC |
| 2 | Fuel | 7 | Crew Sleeping | 12 | Lunches | 17 | Laundry | 22 | CAL OES | 27 | InciNet | 32 | Finance | 37 | COMMS | 42 | Plans |
| 3 | Dozer Parking | 8 | Water | 13 | CAL-MAT | 18 | Comp Claims | 23 | Facilities | 28 | Briefing | 33 | Safety | 38 | Liason | 43 | Situation |
| 4 | Vendor Staging | 9 | Supply | 14 | COVID Screening | 19 | Check-in & Demob | 24 | Food Unit | 29 | Employee Support Services | 34 | FBAN | 39 | Resources | 44 | JIC |
| 5 | Vendor Sleeping | 10 | Ice | 15 | Sleep Trailers | 20 | Time Unit | 25 | Inmate Sleeping | 30 | Medical | 35 | Ordering/LOGS | 40 | Clerical | 45 | PIO |

- ▲ Hand Washing Station
- ▲ Tent Area
- ▶ Porta Potty
- ▶ Dozer Route
- ▶ MAP ID
- ▶ General Route

Christmas Hill Park
 7050 Miller Road, Gilroy, CA 95020



1. Feeding
2. Briefing
3. Plans
4. Motel, Logs Medical
5. Finance
6. Copy trailer
7. Overhead
8. Engines
9. Dozers
10. Fuel
11. Sleeping
12. Showers
13. Laundry
14. Supply
15. Hydration
16. Lunches
17. Med tent
18. Trailer camping

ALL HEAVY EQUIPMENT enter off of Grenache Way (use 7121 Grenache Way for GPS directions)

All others use Miller Road as your main entrance

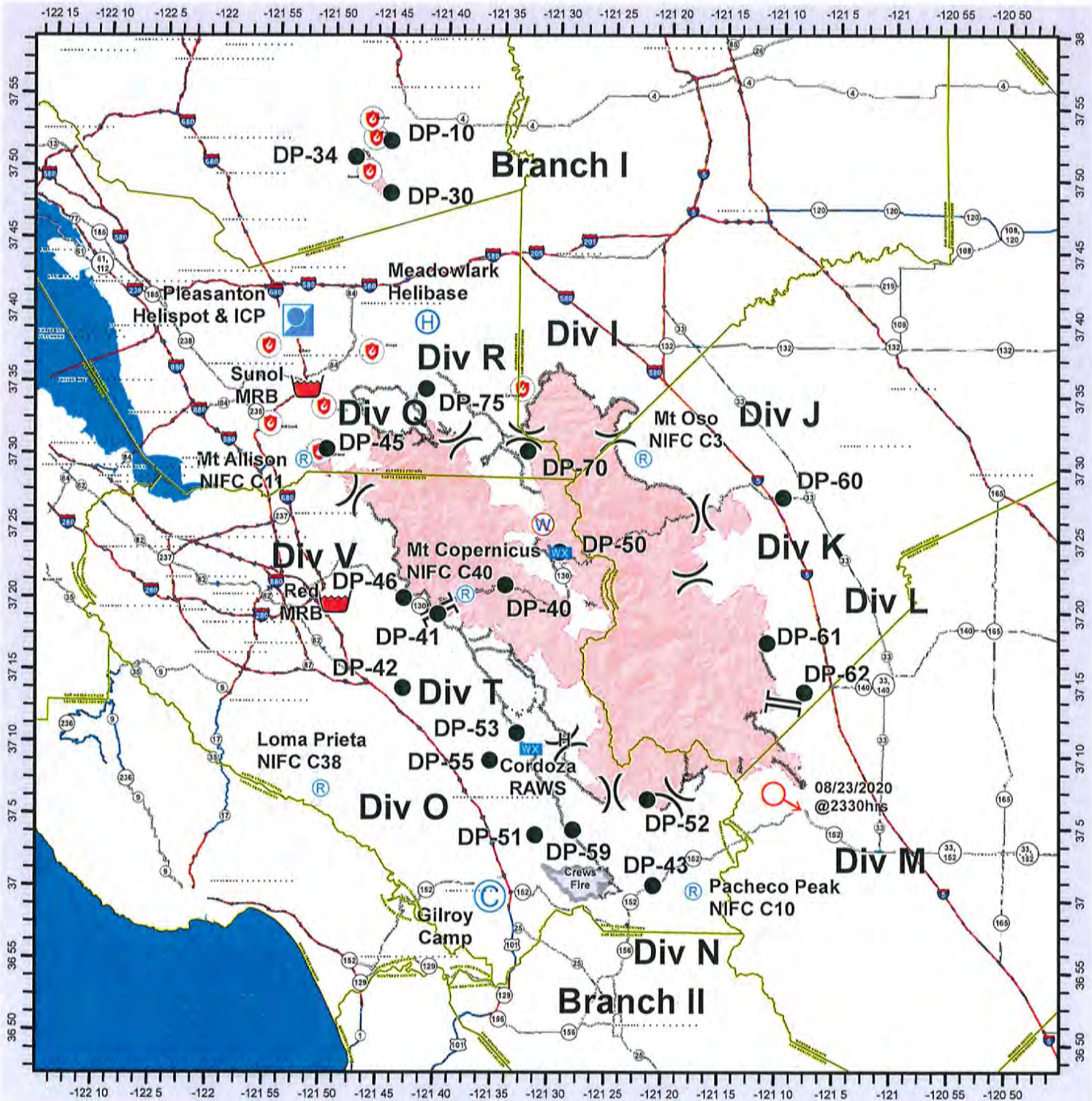
Gilroy Camp
Fuel is located at Gilroy High School 750 W 10 St Gilroy



Fuel is located at Gilroy High School 750 W 10th St, Gilroy CA
95020



SCU LIGHTNING COMPLEX INCIDENT TRANSPORTATION MAP CA SCU 005740



CAL FIRE - INCIDENT MANAGEMENT TEAM 6



| | | | |
|-----------------------|-------------------------|----------------------|-------------------------------|
| Camp | Mobile Weather Unit | Fire Point | Completed Hand Line |
| Drop Point | Repeater | Division Break | Proposed Dozer Line |
| Helibase | Retardant/Mud Pit | Branch Break | Wildfire Daily Fire Perimeter |
| Helispot | Spot Fire | Completed Dozer Line | County |
| Incident Command Post | Restricted Water Source | Completed Dozer Line | |

IMT 6 GISS
8/28/2020
2246 Hours
NAD 83 Teale Albers

THIS PAGE INTENTIONALLY LEFT BLANK

