

INCIDENT ACTION PLAN

SCU LIGHTNING COMPLEX

CA-SCU-005740

Saturday



OPERATIONAL PERIOD

9/5/2020 0700
to
9/6/2020 0700



INCIDENT OBJECTIVES (ICS 202)

1. Incident Name: <p style="text-align: center;">SCU LIGHTNING COMPLEX</p>	2. Operational Period:	Date From: 9/5/2020 Time From: 0700	Date To: 9/6/2020 Time To: 0700
---	-------------------------------	--	------------------------------------

3. Objective(s):

- Management Objectives**
- Provide for emergency personnel and public safety at all times.
 - Ensure COVID-19 precautions and best practices are met at all times.
 - Protect property, improvements, and infrastructure.
 - Ensure repopulation takes place in a quick, efficient, and effective manner.
 - Ensure coordinated, timely and accurate release of public information.
 - Foster and maintain relationships with all cooperators and stakeholders.
 - Protect economic, natural, cultural and heritage resources.
 - Maintain fiscal accountability and keep costs commensurate with values at risk.

- Control Objectives**
- Keep the fire within the current fire perimeter.

General Situational Awareness:

Steep and rugged terrain, critically dry and receptive fuel beds, active area for fire history and drought stressed trees.

In the COVID-19 environment, high density populations or large groups are particularly at risk.

To help protect yourself, your family, and to ensure all employees return home safely, make sure to practice social distancing. Enhanced hygiene (especially handwashing), PPE & monitoring practices help limit the infection rate of first responders.

5. Site Safety Plan Required? Yes No

Approved Site Safety Plan(s) Located at:

- 6. Incident Action Plan**
- | | | | |
|---|--|--|--|
| <input checked="" type="checkbox"/> ICS 203 | <input checked="" type="checkbox"/> ICS 220 | <input checked="" type="checkbox"/> PIO Message | <input checked="" type="checkbox"/> Peer Support Message |
| <input checked="" type="checkbox"/> ICS 204 | <input checked="" type="checkbox"/> Facility Maps | <input checked="" type="checkbox"/> Transportation Map | <input checked="" type="checkbox"/> COVID-19 Safety Bulletin |
| <input checked="" type="checkbox"/> ICS 205 | <input checked="" type="checkbox"/> Weather Forecast | <input checked="" type="checkbox"/> COVID Daily Check | <input checked="" type="checkbox"/> Fire Suppression Repair Plan |
| <input checked="" type="checkbox"/> ICS 206 | <input checked="" type="checkbox"/> Fire Behavior | <input checked="" type="checkbox"/> Finance Message | <input checked="" type="checkbox"/> Demob Message |
| <input checked="" type="checkbox"/> ICS 208 | <input checked="" type="checkbox"/> Training Message | <input checked="" type="checkbox"/> Shift Ticket Example | <input checked="" type="checkbox"/> ICS 214 |

7. Prepared By: Gabe Garcia	Position/Title: PSC1	Signature:
8. Approved by Incident Commander:	Dusty Martin IC (T)	Signature:

ORGANIZATION ASSIGNMENT LIST (ICS 203)

1. Incident Name: SCU LIGHTNING COMPLEX		2. Operational Period: Date From: 9/5/2020		Date To: 9/6/2020	
		Time From: 0700		Time To: 0700	
3. Incident Commander(s) and Command Staff:			7. Operation Section:		
IC/UC's	J.Veik / D. Martin (T)	Operations	M. Jonsson		
Deputy	M. Blankenheim	Deputy Operations	S. Lane (T)		
Safety Officer	J. Buchmeier / J. Novak (T)	Night Ops			
Information Officer	R. Brocchini / R. Lubben (T)	Staging Area			
Liaison Officer	M. Villalpando / J. Kiszka (T)	Branch	I / II	M. Martinez	
4. Agency/Organization Representatives:		Division/Group	I		
CAL OES Fire	Dave Franklin	Division/Group	J / K / L		
Santa Clara County SO	Thea Lera	Division/Group	Q / R		D. Prevett (12)
Santa Clara County OEM	Dana Reed	Division/Group	V		
State Parks	Wes Gray	Division/Group			
PG&E	Pam Perdue	Division/Group			
San Francisco Water	Rick Duffey	Staging Area	ICP		
CCC	Shawn Fry	Division/Group			
CALOES	Jim Linn	Division/Group	M / N		
DWR	Jerry Snow	Division/Group	O		
		Division/Group	T		M. Milojevich (12)
		Division/Group			
		Division/Group			
		Staging Area	Gilroy		
		Branch	Suppression Repair	S. Ward (12) / E. Orre (12) / R. McLaughlin (12)	
		Division/Group	1		A. Hernandez (12) / J. Salazar (12)
		Division/Group	2		R. Henault (12)
		Division/Group	3		W. Barteau (12)
		Division/Group	4		B. Willson (T) (12) / D. Balao (T) (12)
		Division/Group			
		Division/Group			
5. Planning Section:		Division/Group			
Chief	G. Garcia / J. Worden (T)	Division/Group			
Deputy	D. Scheurich (T)	Division/Group			
Resource Unit	J. Anderson / D. McCarroll / J. Heald (T)	Division/Group			
Situation Unit	N. Wallingford / R. Broomfield (T)	Division/Group			
Documentation Unit	M. Schaeffer	Division/Group			
Demobilization Unit	M. Schaeffer (T) / K. Swope (T)	Division/Group			
GISS	S. Leininger	Division/Group			
FBAN	S. Volmer	Air Operations Branch		Director:	B. Kremensky
IMET	R. Rickey	Air Support Group Supervisor		P. Mateer	
Training Tech Spec	S. Vargas / I. Crossley (T)	Air Tactical Group Supervisor			
6. Logistics Section		Helibase Manager		R. Johnson / L. Kalfsbeek (T)	
Chief	S. Dohman (T)				
Deputy Chief	J. Warden (T)	8. Finance/Administration Section:			
Supply Unit	C. Campmas / D. Zumkeller (T)	Chief	G. Belk / J. Tapia (T)		
Facilities Unit	B. Luiz / J. Finley	Deputy Chief	R. Browne		
Ground Support Unit	J. Luckenbach / J. Christofferson (T)	Time Unit	J. Navarro		
Communications Unit	J. Brooks / B. Rapp (T)	Procurement Unit	J. Andrade		
Medical Unit	J. Segura / R. Beeson (T)	Comp/Claims Unit	B. Stirton / E. Sanchez		
Motel Unit	B. Brewer	Cost Unit	G. Bull (T)		
Prepared By: Name:	Josh Anderson	Position/Title:	RESL	Signature:	
ICS 203		Date/Time:	9/4/2020 2300 hours		



SCU Lightning Complex Fire Weather Forecast



FORECAST NO: 18

NAME OF FIRE: SCU Lightning Complex

PREDICTION FOR: 0700 Sat-0700 Sun

UNIT: CALFIRE Santa Clara

SHIFT DATE: Sept 5th-Sept 6th

SIGNED: 

TIME AND DATE

Incident Meteorologist-Robert Rickey

FORECAST ISSUED: 2000 Sep 4rd

WEATHER DISCUSSION: Strong high pressure will bring a round of near record heat and very low humidity to the area today, and an **Excessive Heat Warning is in effect from today through Monday.** Temperatures over the fire will range from the mid-90s to the low-100s. These unusually hot temperatures will combine with afternoon humidity in the 15-25% range. Temperatures at the ICP in Pleasanton, and the camp in Gilroy, will be around 105 F. **Don't get caught off guard, humidity may climb during the evening, but decrease overnight.**

WEATHER FORECAST FOR SATURDAY:

WEATHER: Some morning clouds below 1000 feet, otherwise sunny with some smoke and haze.

HIGH TEMPERATURES:

West of Mines Rd: 90-96 F
East of Mines Rd: 97-103 F

HUMIDITY:

West of Mines Rd: Humidity increasing to 22-28% during the morning, then holding steady.
East of Mines Rd: Humidity decreasing to 13-19%.

20 FT WINDS:

Ridgetop: WNW 4-8 mph with afternoon gusts to 12 mph.
Slopes: Upslope/Up-canyon 4-8 mph with gusts to 12 mph in the late afternoon.

TRANSPORT WINDS: NE 5 mph.

STABILITY/INVERSION: Weak inversion breaking by 1200.

WEATHER FORECAST FOR SATURDAY NIGHT:

WEATHER: Mostly clear skies with some smoke and haze.

TEMPERATURES:

Below 1000 ft: 68-74 F
Above 1000 ft: 75-85 F


HUMIDITY RECOVERY: 20-30%. Some localized areas will see humidity below 20%.

20 FT WINDS:

Ridgetop: Variable 4-8 mph.
Slopes: Downslope/Down-canyon 2-5 mph.

Extended Forecast: High pressure will continue to bring near record heat over Labor Day Weekend, and an **Excessive Heat Warning remains in effect through Monday.** High temperatures will peak on Sunday and Monday, with temperatures in the upper-90s to mid-100s over the entire fire. Temperatures at the ICP in Pleasanton, and the camp in Gilroy, will see highs above 110 F. These abnormally high temperatures will combine with afternoon humidity in the teens. Winds will generally be light and terrain driven over the weekend; however, a passing weather system may brush the area bringing stronger winds to the area on Monday and Tuesday. **A Fire Weather Watch is now in effect from Monday evening through Wednesday morning.**

FIRE BEHAVIOR FORECAST

FORECAST NUMBER: 19	TYPE OF FIRE: WILDFIRE
FIRE NAME: SCU LIGHTNING COMPLEX CASCU-005740	OPERATIONAL PERIOD: 9/5-9/6/20 0700-0700
DATE ISSUED: 9/4/20	TIME ISSUED: 2000
UNIT: SANTA CLARA	SIGNED:  Typed/printed: Stephen Volmer FBAN

INPUTS

WEATHER SUMMARY: **EXCESSIVE HEAT WARNING IS IN EFFECT FROM 9/5 @ 11AM – 9/7 @ 9PM**

Hot and dry weather has settled into the area due to the strong high pressure. Ridgetop winds will be West Northwest 4-8 mph. The lower elevations will experience light terrain driven up slope/up valley winds during the day, downslope/downcanyon at night. Any inversion layer that develops will be weak and break by 1200. Expect high 90's on the lower western slopes, and the mid 100's on the interior and eastern slopes. Daytime humidity will be in the mid teens East of Mines Rd, and in the low 20's West of Mines Rd. Nighttime drying will continue to occur above 2,000' elv and keep those locations warm and dry with active fire potential throughout the entire shift. Expect the sudden humidity drop to begin occurring after 11pm.

OUTPUTS

FIRE BEHAVIOR

FUEL MODEL	RATE OF SPREAD FT/MIN	FLAME LENGTH FT	SPOTTING DISTANCE	PROBABILITY OF IGNITION
GRASS	55-97	7	.30 mi	93%
BRUSH	53-89	20	.50 mi	93%
OAK OVERSTORY	12-23	11	.40 mi	93%

GENERAL:

Live fuel moistures in the area are below critical levels, and will continue to drop with the hot dry conditions over the next week. 1000hr fuels are below the 3rd percentile and are almost at historic levels. Interior Islands still have a high potential for ignition, with reburn likely to occur in areas of dirty burns. **Fuels above 2,000' elevation will burn extremely well all night due to humidity dropping and temperatures lowing minimally.** When fuels, wind, and topography are all in alignment you can expect critical rates of spread across the entire region.

*****Values above are valid for any new starts in the area*****

SPECIFIC:

- Heavy equipment working will be a significant ignition source. Be alert to your work area.
- Hot dry conditions will allow any smoldering material and new ignitions to become active extremely fast.

AIR OPERATIONS: Weak inversion layer will clear out by noon. Expect gusty conditions over the ridgetops in the afternoon. Transport winds Northeast 5 mph will push any smoke into the Santa Clara Valley. Air resources may be committed to other incidents, have a secondary plan.

Sunset 19:27 Sunrise 06:41

SAFETY

- Weather getting hotter and dryer. Begin hydrating now. Make sure you are ready to go.
- Be alert to your parking location. Dry grass will ignite with heat from mufflers and engines.
- New starts will become established quickly. Know your travel routes.



SAFETY MESSAGE

SCU LIGHTNING COMPLEX



1. Incident Name: SCU LIGHTNING COMPLEX	2. Operational Period: Date From: 9/5/20 Time From: 07:00	Date To: 9/6/20 Time To: 07:00
---	--	-----------------------------------

Hotter & Drier Weather Forecasted.
HYDRATE Often! HYDRATE Before, During and After Shift.

MONITOR yourself and your assigned personnel for **FATIGUE** and **HYDRATION**.
Work before the heat.
Use cooling stations throughout the day.
Avoid Complacency.
Maintain Good Work Rest Cycles.

Excessive heat warning in effect. Ensure proper cooling and hydration.

Re-Population is in progress; WATCH for contractors and civilians.

WATCH for Heavy Equipment and traffic on narrow roadways.
EVALUATE your driving routes; Use **CAUTION** no congested roadways.
MAINTAIN a safe following distance: monitor speed, gear selection, & brakes.
UTILIZE backers and spotters; when in doubt scout it out!

Utility companies are utilizing helicopters for utility work. Stay away from utility work areas.

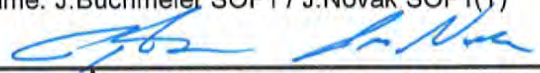
FOLLOW the incident communication plan.

ALWAYS wear the proper PPE.

PURGE outdated food and **DISINFECT** ice chests and apparatus.

DON'T let URGENCY drive the task;
Allow priorities to drive safe practices in your work zone.

4. Site Safety Plan Required? Yes No

5. Prepared by: Name: J.Buchmeier SOF1 / J.Novak SOF1(T)


ICS 208 Date/Time September 4, 2020 / 1900

1. Incident Name: SCU LIGHTNING COMPLEX		2. Incident Number: CA-SCU-005740
3. Incident Area	4. Hazards/Risks	5. Mitigations
DIV	HAZARDOUS ACTIONS/CONDITIONS	MITIGATIONS / WARNINGS / REMEDIES
ALL	COVID 19	Adhere to local, state, federal and CDC health guidelines. Maintain social distancing when applicable. Wear a mask for yourself and others. Report any symptoms immediately to a supervisor. Hygiene, hand washing, and disinfecting of surfaces & handles often.
ALL	FATIGUE, HEAT, & DEHYDRATION	Don't underestimate the task at hand. Adhere to work/rest cycle for the task(s) to complete. Don't get caught off guard. Drink water before, during and after shifts, up to 1.5 gal. per shift.
ALL	COMPLACENCY	Be alert for signs of fatigue and take breaks as necessary on hot dry days. Monitor incoming resources for level of fatigue. Be alert for signs of heat stress in yourself and others; use the buddy system. Eat small meals often and when possible. Find shade when you can. Have the right radio clone.
ALL	FIRE BEHAVIOR & NEW START(S)	Know your LCES and maintain Situational Awareness. Use experienced Look Outs. Follow downhill line construction guidelines. Monitor weather for changes in the wind, temp, and RH during the shift. Have a contingency plan with established decision points and safety zones.
ALL	STEEP TERRAIN / ROLLING DEBRIS	Watch your footing while hiking in steep terrain. Be careful of loose rolling debris. Maintain Situational Awareness.
ALL	FALLING MODULES, HAZARD TREES, STUMP HOLES	Identify and isolate the area to provide for the safety of others. Flag and make proper notifications. Do not fall trees out of your certification level. Evaluate wind and lean prior to making cuts. Monitor footing; watch for ash pits and root balls.
ALL	MOP UP, REHAB, & REPAIR	Conduct thorough briefing for all personnel; Assure proper PPE. Ensure LCES in place prior to engagement; Establish adequate Safety Zones. Use Downhill Line Checklist. Follow "Look Up, Look Down, Look Around" procedures. Utilize Risk Management Process...reference the IRPG. Watch for Heavy Equipment and Roll Out.
ALL	DRIVING HAZARDS	SLOW DOWN! Long travel times to the line, stay alert. Utilize Chocks. Drive defensively! Expect the unexpected around every curve. Drive with headlights and seatbelts on. 5 MPH at incident base/camp. Narrow roads with limited passing room; utilize spotters & backers. Coordinate your movements on one-lane roads, follow traffic plans. Assess Road Conditions; Flag hazard if you cannot mitigate, report.
ALL	AIRCRAFT OPERATIONS	Monitor air-to-ground frequency, they are your eyes in the sky. Use air-to-ground frequency to communicate with aircraft. Use clear, concise statements when directing aircraft; clear the line. Only utilize aircraft to insert personnel on the line when necessary.
ALL	HEAVY EQUIPMENT & DOZER SAFETY	Watch for rolling material. Monitor safe working distances. Avoid working below dozer. Utilize communication with the operator (radio or hand signals).
6. Prepared by: Joe Buchmeier SOF1/Jason Noyak SOF1(T)		
ICS 215A	Operational Period 9/5/20 – 9/6/20	Time: 0700 - 0700



CAL FIRE / INCIDENT MANAGEMENT TEAM 6

COVID-19 DAILY HEALTH CHECK SCREENING ALGORITHM



EACH WORKDAY WILL BEGIN WITH THE FOLLOWING:

Temperature recorded
Employee Screening Questionnaire

TEMPERATURE RECORDED

- Fever YES/NO? *Fever is considered > 100.4*
- #### EMPLOYEE SCREENING QUESTIONNAIRE
- Are you feeling ill/feverish?
 - Are you having chills?
 - Do you have new or worsening SOB?
 - Do you have a new or worsening cough?
 - Do you have a new or prolonged sore throat?

No Fever and **No** answered to all
Employee Screening Questionnaire

Continue with Daily Operations

Yes Fever OR **Yes** answered to any of the Employee
Screening Questionnaire

- Wash Hands, Don Mask and Isolate from other employ-ees. Maintain a distance of > 6 feet.
- Notify the Company Officer and/or Strike Team Leader.
- Notify Medical Unit Leader
- Refer employee to appropriate healthcare provider for evaluation and treatment.
- Disinfect "High-touch" surface areas.

REMINDERS TO ALL EMPLOYEES

- ◇ Self-Monitor yourself while you are on and off the line. If you experience any flu-like symptoms, COVID-19 symptoms, or any Respiratory illness symptoms contact your Company Officer and or Strike Team Leader.
- ◇ Maintain proper hand hygiene. Wash hands with soap and water for 20 seconds. Utilize hand sanitizer often. Do not shake hands, touch, or hug others.
- ◇ Cover coughs or sneezes (if not masked). Cloth Masks should be exchanged and or washed daily.
- ◇ Masks are required when out in the public on non-emergency business.
- ◇ Disinfect high-touch surfaces daily.
- ◇ Practice social distancing (> 6 feet) at meal times, dormitories, in-person meeting, or while in public.



CAL FIRE / Incident Management Team 6

COVID-19 Response Algorithm



Employee Response Action Plan

COVID-19 Positive Test or COVID-19 Positive Clinical Symptoms Presentation

- COVID 19 Symptoms: Cough, SOB, Fever or afebrile, Chills, Muscle Pain, Sore throat, Loss of taste/smell
- Employee informs Company Officer and Strike Team Leader of presumed/confirmed COVID-19 symptoms.
- Employee advised to seek evaluation by Medical Unit and CAL MAT or base camp medical unit.
- Crew initiates cleaning measures. Mask, safety glasses, gloves worn. (If needed, LOGS will assist)
- Medical Unit to notified IC, Liaison, Safety and Logistics ASAP. Medical Unit will notify COVID-19 Public Health Officer and determine need for testing and locations.



Incident Action Plan

- Company Officer / Strike Team Leader notified of personnel with COVID-19 positive test or symptom.
- Medical Unit evaluates individual(s) and need for care and evaluation.
- IC, Liaison, Safety and Logistics notification made to determine course of incident evaluation and response.
- Line Chief, Agency Administrator, and Region Office updated upon notification



Facilities Response

- Medical and Safety notified
- Incident Notification
- Disinfection plan initiated.
- Resource Status Evaluated



Medical Evaluation & Contact Tracing

- Personnel interviewed by Medical Unit . List of Positive contacts made in the last 5 days acquired. All Exposed are required to wear surgical mask, self monitor for Fever/Resp symptoms for up to 14 days (exposed personnel are subject to COVID-19 testing)
- Home Unit / Department utilized and retrospective tracking of Positive COVID-19 personnel inter-actions are identified within the last 5 days.
- Home Unit / Department updated by Company Officer / Strike Team Leader.
- Public Health Department is contacted and updated by IC or Designated Representative.
- Positive COVID-19 Employees w/symptoms will need to be evaluated by Health Department conducting testing, prior to returning to assignment.
- Positive COVID-19 Employees w/o symptoms may be required to be evaluated and resource status will be reviewed prior to returning to assignment.

ASSIGNMENT LIST (ICS 204 WF)

CONTROLLED UNCLASSIFIED
INFORMATION/BASIC

1. Incident Name:	2. Operational Period:	3. Branch	Division
SCU LIGHTNING COMPLEX	Date From: 09/05/20 Date To: 09/06/20 Time From: 0700 Time To: 0700	I / II	J / K / L

4. Operations Personnel:		Page 1 of 1
Operations Section Chief: M. Jonsson	Night Ops:	
Branch Director: M. Martinez	Branch Safety:	
Division/Group Supervisor:	Air Attack:	

5. Resources Assigned:		** Resources Below in Bold are 12 Hour **					
Resource Identifier	ALS	LWD	Leader	Personnel	Request #	Hours	Reporting Location

6. Work Assignments:
 Tactical Patrol.
 Mop up 300' in from control line.
 Backhaul all trash.

7. Special Instructions:

8. Communications							
Name	Ch	Function	Rx Freq	Rx Tone	Tx Freq	Tx Tone	Notes
NIFC C3	2	COMMAND	170.4250N	131.8 (T3)	168.0750N	131.8 (T3)	MT OSO LINKED W/CMD 10, 11, 38, & 40
VTAC 12	9	TACTICAL	154.4525N	T6 - 156.7	154.4525N	T6 - 156.7	OPS BRIEFING CHANNEL
CDF T15	13	ROTARY A/G	159.2700N	192.8 (T16)	159.2700N	192.8 (T16)	ROTARY AIRCRAFT AIR TO GROUND
CDF T20	14	FIXED WING A/G	159.3750N	192.8 (T16)	159.3750N	192.8 (T16)	FIXED WING AIRCRAFT AIR TO GROUND
CALCORD	15	MEDICAL	156.0750N	156.7 (T6)	156.0750N	156.7 (T6)	
GUARD 27	16	EMERGENCY	168.6250N		168.6250N	110.9 (T1)	AIR GUARD

9. Prepared by: Name:	Josh Anderson	RESL	Signature:	
ICS 204	Date/Time: 9/4/2020	2200	Personnel Count: 0	

ASSIGNMENT LIST (ICS 204 WF)

CONTROLLED UNCLASSIFIED
INFORMATION//BASIC

1. Incident Name: SCU LIGHTNING COMPLEX	2. Operational Period: Date From: 09/05/20 Date To: 09/06/20 Time From: 0700 Time To: 0700	3. Branch Division I / II Q / R
--	---	--

4. Operations Personnel:		
Operations Section Chief: M. Jonsson	Night Ops:	
Branch Director: M. Martinez	Branch Safety:	
Division/Group Supervisor: D. Prevett (12)	Air Attack:	

Page 1 of 1

5. Resources Assigned:		** Resources Below in Bold are 12 Hour **					
Resource Identifier	ALS	LWD	Leader	Personnel	Request #	Hours	Reporting Location
STC MEU 9110C			K. Taglio	18	E-41	0700-0700	ICP
T/F MONTANA 2	X		K. Parks	15	E-483	0700-1900	ICP
CRW T2 C-23			K. Morse	20	C-23	0700-1900	ICP
W/T PVT E-228			T. Kelly	2	E-228	0700-0700	ICP
W/T PVT E-233			R. Hurl	2	E-233	0700-0700	ICP
FEMP NICOLINI	X		S. Nicolini	1	O-478	0700-0700	ICP
FEMT DUGGAN			B. Duggan	1	O-199	0700-0700	ICP
REMS MODULE 53	X		R. Smith	1	O-377	0700-1900	ICP

6. Work Assignments:
 Tactical Patrol.
 Backhaul all trash.
 Mop up 300' in from control line.

7. Special Instructions:

8. Communications							
Name	Ch	Function	Rx Freq	Rx Tone	Tx Freq	Tx Tone	Notes
NIFC C11	4	COMMAND	170.6875N	131.8 (T3)	166.5750N	131.8 (T3)	MT ALLISON LINKED W/CMD 3, 10, 38 & 40
CDF T29	7	TACTICAL	151.3475N	192.8 (T16)	151.3475N	192.8 (T16)	
CDF T15	13	ROTARY A/G	159.2700N	192.8 (T16)	159.2700N	192.8 (T16)	ROTARY AIRCRAFT AIR TO GROUND
CDF T20	14	FIXED WING A/G	159.3750N	192.8 (T16)	159.3750N	192.8 (T16)	FIXED WING AIRCRAFT AIR TO GROUND
CALCORD	15	MEDICAL	156.0750N	156.7 (T6)	156.0750N	156.7 (T6)	
GUARD 27	16	EMERGENCY	168.6250N		168.6250N	110.9 (T1)	AIR GUARD

9. Prepared by: Name:	Josh Anderson	RESL	Signature:
ICS 204	Date/Time: 9/4/2020	2200	Personnel Count: 60

ASSIGNMENT LIST (ICS 204 WF)

CONTROLLED UNCLASSIFIED
INFORMATION//BASIC

1. Incident Name: SCU LIGHTNING COMPLEX	2. Operational Period: Date From: 09/05/20 Date To: 09/06/20 Time From: 0700 Time To: 0700	3. Branch Staging I / II ICP
--	---	---

4. Operations Personnel:		Page 1 of 1
Operations Section Chief: M. Jonsson	Night Ops:	
Branch Director:	Branch Safety:	
Division/Group Supervisor:	Air Attack:	

5. Resources Assigned:		** Resources Below in Bold are 12 Hour **					
Resource Identifier	ALS	LWD	Leader	Personnel	Request #	Hours	Reporting Location
STC KRN 9320C			C. Bias	17	E-205	0700-1900	ICP
STH SHU 9242H			J. Smutz	26	C-87	0700-1900	ICP
STG HUU 9126G			C. Boshchi	3	E-453	0700-1900	ICP
DOZ LNU 1445			C. Boshchi	3	E-453	0700-1900	ICP
DOZ LNU 1449			B. Pots	3	E-366	0700-1900	ICP

6. Work Assignments:
 Maintain 3 minute response time.
 Monitor command frequencies.

7. Special Instructions:

8. Communications							
Name	Ch	Function	Rx Freq	Rx Tone	Tx Freq	Tx Tone	Notes
NIFC C11	4	COMMAND	170.6875N	131.8 (T3)	166.5750N	131.8 (T3)	MT ALLISON LINKED W/CMD 3, 10, 38 & 40
CDF T15	13	ROTARY A/G	159.2700N	192.8 (T16)	159.2700N	192.8 (T16)	ROTARY AIRCRAFT AIR TO GROUND
CDF T20	14	FIXED WING A/G	159.3750N	192.8 (T16)	159.3750N	192.8 (T16)	FIXED WING AIRCRAFT AIR TO GROUND
CALCORD	15	MEDICAL	156.0750N	156.7 (T6)	156.0750N	156.7 (T6)	
GUARD 27	16	EMERGENCY	168.6250N		168.6250N	110.9 (T1)	AIR GUARD

9. Prepared by: Name:	Josh Anderson	RESL	Signature:
ICS 204	Date/Time: 9/4/2020	2200	Personnel Count: 52

ASSIGNMENT LIST (ICS 204 WF)

CONTROLLED UNCLASSIFIED
INFORMATION/BASIC

1. Incident Name: SCU LIGHTNING COMPLEX	2. Operational Period: Date From: 09/05/20 Date To: 09/06/20 Time From: 0700 Time To: 0700	3. Branch Division I / II M / N
--	---	--

4. Operations Personnel:	Page 1 of 1
Operations Section Chief: M. Jonsson	Night Ops:
Branch Director:	Branch Safety:
Division/Group Supervisor:	Air Attack:


5. Resources Assigned:		** Resources Below in Bold are 12 Hour **						
Resource Identifier	ALS	LWD	Leader	Personnel	Request #	Hours	Reporting Location	
ENG3 CZU 1769			C. Holmes	3	E-389	0700-0700	Gilroy Camp	

6. Work Assignments:
Tactical Patrol.
Mop up 300' in from control line.
Backhaul all trash.

7. Special Instructions:
NIFC C40 may provide better coverage in some areas.
All resources on Division M / N to report to Gilroy Camp for logistics support with the exception of STG Strike Teams.

8. Communications

Name	Ch	Function	Rx Freq	Rx Tone	Tx Freq	Tx Tone	Notes
NIFC C10	3	COMMAND	170.4125N	131.8 (T3)	165.9625N	131.8 (T3)	MT PACHECO LINKED W/CMD 3, 11, 38, & 40
CDF T31	7	TACTICAL	159.3825N	192.8 (T16)	159.3825N	192.8 (T16)	
CDF T15	13	ROTARY A/G	159.2700N	192.8 (T16)	159.2700N	192.8 (T16)	ROTARY AIRCRAFT AIR TO GROUND
CDF T20	14	FIXED WING A/G	159.3750N	192.8 (T16)	159.3750N	192.8 (T16)	FIXED WING AIRCRAFT AIR TO GROUND
CALCORD	15	MEDICAL	156.0750N	156.7 (T6)	156.0750N	156.7 (T6)	
GUARD 27	16	EMERGENCY	168.6250N		168.6250N	110.9 (T1)	AIR GUARD

9. Prepared by: Name:	Josh Anderson	RESL	Signature: 
ICS 204	Date/Time: 9/4/2020	2200	Personnel Count: 3

ASSIGNMENT LIST (ICS 204 WF)

CONTROLLED UNCLASSIFIED
INFORMATION/BASIC

1. Incident Name: SCU LIGHTNING COMPLEX		2. Operational Period: Date From: 09/05/20 Date To: 09/06/20 Time From: 0700 Time To: 0700				3. Branch I / II		Division T	
4. Operations Personnel: Operations Section Chief: M. Jonsson Branch Director: Division/Group Supervisor: M. Milojevich (12)						Night Ops: Branch Safety: Air Attack:			
5. Resources Assigned:		** Resources Below in Bold are 12 Hour **							
Resource Identifier	ALS	LWD	Leader	Personnel	Request #	Hours	Reporting Location		
STC MVU 9335C			R. Scales	17	E-209	0700-0700	Gilroy Staging		
T/F WASHINGTON 426			D. Holm	20	E-426	0700-1900	Gilroy Staging		
STG HUU 9122G			G. Lindemann	30	C-27	0700-1900	Gilroy Staging		
STH SCU 9163H			M. Lane	17	C-85	0700-1900	Gilroy Staging		
GRD PVT E-575			P. Roen	1	E-575	0700-1900	Gilroy Staging		
GRD PVT E-577			M. Huckaby	1	E-577	0700-1900	Gilroy Staging		
W/T PVT E-6			B. Indiher	1	E-6	0700-1900	Gilroy Staging		
W/T PVT E-232			A. Armstrong	1	E-232	0700-1900	Gilroy Staging		
W/T PVT E-242			J. Zulu	1	E-242	0700-1900	Gilroy Staging		
W/T PVT E-338			S. Vest	1	E-338	0700-1900	Gilroy Staging		
HEQB HALE			N. Hale	1	O-580	0700-1900	Gilroy Staging		
REMS MODULE 1	X		B. Krone	4	O-379	0700-1900	Gilroy Staging		
6. Work Assignments: Tactical Patrol. Backhaul all trash. Mop up 300' in from control line.									
7. Special Instructions: All resources on Division T to report to Gilroy Camp for logistics support with the exception of STG Strike Teams.									
8. Communications									
Name	Ch	Function	Rx Freq	Rx Tone	Tx Freq	Tx Tone	Notes		
NIFC C40	6	COMMAND	173.7500N	131.8 (T3)	163.8250N	131.8 (T3)	COPERNICUS PK LINKED W/CMD 3, 10, 11, & 38		
VTAC 13	9	TACTICAL	158.7375N	T6 - 156.7	158.7375N	T6 - 156.7			
CDF T15	13	ROTARY A/G	159.2700N	192.8 (T16)	159.2700N	192.8 (T16)	ROTARY AIRCRAFT AIR TO GROUND		
CDF T20	14	FIXED WING A/G	159.3750N	192.8 (T16)	159.3750N	192.8 (T16)	FIXED WING AIRCRAFT AIR TO GROUND		
CALCORD	15	MEDICAL	156.0750N	156.7 (T6)	156.0750N	156.7 (T6)			
GUARD 27	16	EMERGENCY	168.6250N		168.6250N	110.9 (T1)	AIR GUARD		
9. Prepared by: Name:		Josh Anderson			RESL				
					Signature:				
ICS 204		Date/Time: 9/4/2020			2200		Personnel Count: 95		

ASSIGNMENT LIST (ICS 204 WF)

CONTROLLED UNCLASSIFIED
INFORMATION//BASIC

1. Incident Name:	2. Operational Period:	3. Branch	Staging
SCU LIGHTNING COMPLEX	Date From: 09/05/20 Date To: 09/06/20 Time From: 0700 Time To: 0700	I / II	Gilroy

Page 1 of 1

4. Operations Personnel:		Night Ops:
Operations Section Chief: M. Jonsson		Branch Safety:
Branch Director:		Air Attack:
Division/Group Supervisor:		

5. Resources Assigned:	** Resources Below in Bold are 12 Hour **						
Resource Identifier	ALS	LWD	Leader	Personnel	Request #	Hours	Reporting Location
STC SHU 9241C			J. Capen	17	E-358	0700-1900	Gilroy Camp

6. Work Assignments:
 Maintain 3 minute response time.
 Monitor command frequencies.

7. Special Instructions:
 All resources in Gilroy Staging to report to Gilroy Camp for logistics support with the exception of STG Strike Teams.

8. Communications							
Name	Ch	Function	Rx Freq	Rx Tone	Tx Freq	Tx Tone	Notes
NIFC C10	3	COMMAND	170.4125N	131.8 (T3)	165.9625N	131.8 (T3)	MT PACHECO LINKED W/CMD 3, 11, 38, & 40
CDF T15	13	ROTARY A/G	159.2700N	192.8 (T16)	159.2700N	192.8 (T16)	ROTARY AIRCRAFT AIR TO GROUND
CDF T20	14	FIXED WING A/G	159.3750N	192.8 (T16)	159.3750N	192.8 (T16)	FIXED WING AIRCRAFT AIR TO GROUND
CALCORD	15	MEDICAL	156.0750N	156.7 (T6)	156.0750N	156.7 (T6)	
GUARD 27	16	EMERGENCY	168.6250N		168.6250N	110.9 (T1)	AIR GUARD

9. Prepared by: Name: Josh Anderson RESL
 Signature: _____
ICS 204 Date/Time: 9/4/2020 2200 Personnel Count: 17

ASSIGNMENT LIST (ICS 204 WF)

CONTROLLED UNCLASSIFIED
INFORMATION//BASIC

1. Incident Name: SCU LIGHTNING COMPLEX	2. Operational Period: Date From: 09/05/20 Date To: 09/06/20 Time From: 0700 Time To: 0700	3. Branch Group Suppression Repair 1
4. Operations Personnel:		Page 1 of 2

Operations Section Chief: M. Jonsson	Night Ops:
Branch Director: S. Ward (12) / E. Orre (12) / R. McLaughlin (12)	Branch Safety:
Division/Group Supervisor: A. Hernandez (12) / J. Salazar (12)	Air Attack:

5. Resources Assigned:		** Resources Below in Bold are 12 Hour **					
Resource Identifier	ALS	LWD	Leader	Personnel	Request #	Hours	Reporting Location
T/F PVT THUNDER BOLT			S. Gonzales	15	E-363	0700-1900	ICP
CRW T2 C-25			T. Jensen	20	C-25	0700-1900	ICP
DOZ PVT E-210			A. Bushey	1	E-210	0700-1900	ICP
DOZ PVT E-217			R. Dudbah	1	E-217	0700-1900	ICP
DOZ PVT E-218			J. Wyatt	1	E-218	0700-1900	ICP
DOZ PVT E-394			T. Waterman	1	E-394	0700-1900	ICP
CHIP PVT E-481			L. Owens	1	E-481	0700-1900	ICP
CHIP PVT E-500			C. Wallace	2	E-500	0700-1900	ICP
EXC PVT E-548			P. Leslie	1	E-548	0700-1900	ICP
EXC PVT E-454			S. Clark	1	E-454	0700-1900	ICP
EXC PVT E-458			A. Fratarcangeli	1	E-458	0700-1900	ICP
W/T PVT E-234			J. Bendall	1	E-234	0700-1900	ICP
W/T PVT E-236			R. Santana	1	E-236	0700-1900	ICP
W/T PVT E-245			D. Harms	1	E-245	0700-1900	ICP
W/T PVT E-248			V. Reali	1	E-248	0700-1900	ICP
FALM O-370			M. Meckley	1	O-370	0700-1900	ICP
FALM O-652			S. Slack	1	O-652	0700-1900	ICP
HEQB GRAHAM (T)			J. Graham	1	O-421	0700-1900	ICP
HEQB WHEELER			B. Wheeler	1	O-424	0700-1900	ICP

6. Work Assignments:
Assess fire suppression needs and implement plan where directed.

7. Special Instructions:
All resources in suppression repair are twelve hour resources.
Use appropriate command channel based off of working location.

8. Communications							
Name	Ch	Function	Rx Freq	Rx Tone	Tx Freq	Tx Tone	Notes
NIFC C40	6	COMMAND	173.7500N	131.8 (T3)	163.8250N	131.8 (T3)	COPERNICUS PK LINKED WCMD 3, 10, 11, & 38
VFIRE 24	12	TACTICAL	154.2725N	156.7 (T6)	154.2725N	156.7 (T6)	
CDF T15	13	ROTARY A/G	159.2700N	192.8 (T16)	159.2700N	192.8 (T16)	ROTARY AIRCRAFT AIR TO GROUND
CDF T20	14	FIXED WING A/G	159.3750N	192.8 (T16)	159.3750N	192.8 (T16)	FIXED WING AIRCRAFT AIR TO GROUND
CALCORD	15	MEDICAL	156.0750N	156.7 (T6)	156.0750N	156.7 (T6)	
GUARD 27	16	EMERGENCY	168.6250N		168.6250N	110.9 (T1)	AIR GUARD

9. Prepared by: Name: Josh Anderson	RESL	Signature:
ICS 204	Date/Time: 9/4/2020 2200	Personnel Count: 52

ASSIGNMENT LIST (ICS 204 WF)

CONTROLLED UNCLASSIFIED
INFORMATION//BASIC

1. Incident Name: SCU LIGHTNING COMPLEX	2. Operational Period: Date From: 09/05/20 Date To: 09/06/20 Time From: 0700 Time To: 0700	3. Branch Group Suppression 1 Repair
--	--	---


4. Operations Personnel:		Page 2 of 2
Operations Section Chief: M. Jonsson	Night Ops:	
Branch Director: S. Ward (12) / E. Orre (12) / R. Mclaughlin (12)	Branch Safety:	
Division/Group Supervisor: A. Hernandez (12) / J. Salazar (12)	Air Attack:	

5. Resources Assigned:	** Resources Below in Bold are 12 Hour **						
Resource Identifier	ALS	LWD	Leader	Personnel	Request #	Hours	Reporting Location
HEQB NEESE (T)			D. Neese	1	O-523	0700-1900	ICP
RESP FAZIO			J. Fazio	1	O-23	0700-1900	ICP

6. Work Assignments:
Assess fire suppression needs and implement plan where directed.

7. Special Instructions:
All resources in suppression repair are twelve hour resources.
Use appropriate command channel based off of working location.
Resources identified with an * to report to the Tree Project on HWY 130

8. Communications							
Name	Ch	Function	Rx Freq	Rx Tone	Tx Freq	Tx Tone	Notes
NIFC C40	6	COMMAND	173.7500N	131.8 (T3)	163.8250N	131.8 (T3)	COPERNICUS PK LINKED W/CMD 3, 10, 11, & 38
VFIRE 24	12	TACTICAL	154.2725N	156.7 (T6)	154.2725N	156.7 (T6)	
CDF T15	13	ROTARY A/G	159.2700N	192.8 (T16)	159.2700N	192.8 (T16)	ROTARY AIRCRAFT AIR TO GROUND
CDF T20	14	FIXED WING A/G	159.3750N	192.8 (T16)	159.3750N	192.8 (T16)	FIXED WING AIRCRAFT AIR TO GROUND
CALCORD	15	MEDICAL	156.0750N	156.7 (T6)	156.0750N	156.7 (T6)	
GUARD 27	16	EMERGENCY	168.6250N		168.6250N	110.9 (T1)	AIR GUARD

9. Prepared by: Name: Josh Anderson RESL Signature: 

ICS 204 Date/Time: 9/4/2020 2200 Personnel Count: 2

ASSIGNMENT LIST (ICS 204 WF)

CONTROLLED UNCLASSIFIED
INFORMATION//BASIC

1. Incident Name: SCU LIGHTNING COMPLEX	2. Operational Period: Date From: 09/05/20 Date To: 09/06/20 Time From: 0700 Time To: 0700	3. Branch Group Suppression Repair 2
4. Operations Personnel:		Page 1 of 2

Operations Section Chief: M. Jonsson	Night Ops:
Branch Director: S. Ward (12) / E. Orre (12) / R. McLaughlin (12)	Branch Safety:
Division/Group Supervisor: R. Henault (12)	Air Attack:

5. Resources Assigned:	** Resources Below in Bold are 12 Hour **							
Resource Identifier	ALS	LWD	Leader	Personnel	Request #	Hours	Reporting Location	
STC OESH TX-2			S. Campbell	22	E-452	0700-1900	ICP	
CRW T2 C-26			M. Spence	20	C-26	0700-1900	ICP	
DOZ PVT E-211			J. Ontano	1	E-211	0700-1900	ICP	
DOZ PVT E-216			S. Maynard	1	E-216	0700-1900	ICP	
DOZ PVT E-220			B. Dunn	1	E-220	0700-1900	ICP	
DOZ PVT E-393			C. Graham	1	E-393	0700-1900	ICP	
CHIP PVT E-480			J. Powell	3	E-480	0700-1900	ICP	
CHIP PVT E-503			T. Wright	2	E-503	0700-1900	ICP	
EXC PVT E-550			D. Briski	1	E-550	0700-1900	ICP	
GRD PVT E-423			E. Butts	1	E-423	0700-1900	ICP	
GRD PVT E-460			D. Warren	1	E-460	0700-1900	ICP	
GRD PVT E-462			R. Mustin	1	E-462	0700-1900	ICP	
MAS PVT E-456			S. Evans	1	E-456	0700-1900	ICP	
MAS PVT E-457			R. Borst	1	E-457	0700-1900	ICP	
MAS PVT E-537			J. List	1	E-537	0700-1900	ICP	
W/T PVT E-226			L. Burton	1	E-226	0700-1900	ICP	
W/T PVT E-229			D. Wood	1	E-229	0700-1900	ICP	
W/T PVT E-230			D. Hughes	1	E-230	0700-1900	ICP	

6. Work Assignments:
Assess fire suppression needs and follow plan where directed.

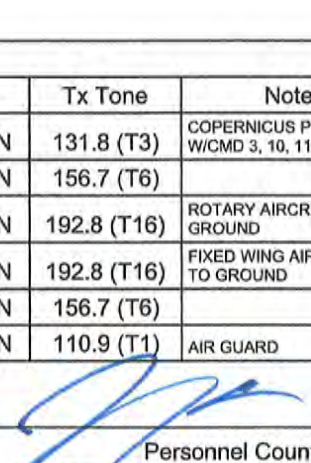
7. Special Instructions:
All resources assigned to suppression repair are twelve hours resources.
Use appropriate command channel based off of working location.
Resources identified with an * to report to the Tree Project on HWY 130

8. Communications							
Name	Ch	Function	Rx Freq	Rx Tone	Tx Freq	Tx Tone	Notes
NIFC C40	6	COMMAND	173.7500N	131.8 (T3)	163.8250N	131.8 (T3)	COPERNICUS PK LINKED W/CMD 3, 10, 11, & 38
VFIRE 24	12	TACTICAL	154.2725N	156.7 (T6)	154.2725N	156.7 (T6)	
CDF T15	13	ROTARY A/G	159.2700N	192.8 (T16)	159.2700N	192.8 (T16)	ROTARY AIRCRAFT AIR TO GROUND
CDF T20	14	FIXED WING A/G	159.3750N	192.8 (T16)	159.3750N	192.8 (T16)	FIXED WING AIRCRAFT AIR TO GROUND
CALCORD	15	MEDICAL	156.0750N	156.7 (T6)	156.0750N	156.7 (T6)	
GUARD 27	16	EMERGENCY	168.6250N		168.6250N	110.9 (T1)	AIR GUARD

9. Prepared by: Name: Josh Anderson RESL Signature:
ICS 204 Date/Time: 9/4/2020 2200 Personnel Count: 61

ASSIGNMENT LIST (ICS 204 WF)

CONTROLLED UNCLASSIFIED
INFORMATION//BASIC

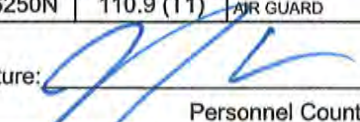
1. Incident Name:		2. Operational Period:				3. Branch		Group	
SCU LIGHTNING COMPLEX		Date From: 09/05/20	Date To: 09/06/20			Suppression Repair		3	
		Time From: 0700	Time To: 0700						
4. Operations Personnel:									
Operations Section Chief: M. Jonsson					Night Ops:				
Branch Director: S. Ward (12) / E. Orre (12) / R. Mclaughlin (12)					Branch Safety:				
Division/Group Supervisor: W. Barteau (12)					Air Attack:				
5. Resources Assigned:									
** Resources Below in Bold are 12 Hour **									
Resource Identifier	ALS	LWD	Leader	Personnel	Request #	Hours	Reporting Location		
STC OESH TX-1			R. Mack	22	E-451	0700-1900	ICP		
CRW T2 C-12			C. Pacheco	1	C-12	0700-1900	ICP		
DOZ PVT E-213			A. Daniels	1	E-213	0700-1900	ICP		
DOZ PVT E-215			L. Arias	1	E-215	0700-1900	ICP		
DOZ PVT E-221			T. Funes	1	E-221	0700-1900	ICP		
DOZ PVT E-223			L. Gill	1	E-223	0700-1900	ICP		
CHIP PVT E-552			K. Kirby	1	E-552	0700-1900	ICP		
CHIP PVT E-553			J. Morgan	2	E-553	0700-1900	ICP		
GRD PVT E-459			K. Pereira	1	E-459	0700-1900	ICP		
GRD PVT E-464			L. Mason	1	E-464	0700-1900	ICP		
W/T PVT E-239			P. Yokoyama	1	E-239	0700-1900	ICP		
W/T PVT E-251			S. Fourby	1	E-251	0700-1900	ICP		
W/T PVT E-429			R. Leaverton	1	E-429	0700-1900	ICP		
FALM O-653			T. Gill	2	O-653	0700-1900	ICP		
HEQB BRIDGER			J. Bridger	1	O-483	0700-1900	ICP		
HEQB WALCZAK (T)			S. Walczak	1	O-403	0700-1900	ICP		
RESP MCDANIEL			P. Mcdaniel	1	O-220	0700-1900	ICP		
6. Work Assignments:									
Assess fire suppression needs and follow plan where directed.									
7. Special Instructions:									
Use appropriate command channel based off of working location.									
Resources identified with an * to report to the Tree Project on HWY 130									
All resources in suppression repair are twelve hour resources.									
8. Communications									
Name	Ch	Function	Rx Freq	Rx Tone	Tx Freq	Tx Tone	Notes		
NIFC C40	6	COMMAND	173.7500N	131.8 (T3)	163.8250N	131.8 (T3)	COPERNICUS PK LINKED W/CMD 3, 10, 11, & 38		
VFIRE 24	12	TACTICAL	154.2725N	156.7 (T6)	154.2725N	156.7 (T6)			
CDF T15	13	ROTARY A/G	159.2700N	192.8 (T16)	159.2700N	192.8 (T16)	ROTARY AIRCRAFT AIR TO GROUND		
CDF T20	14	FIXED WING A/G	159.3750N	192.8 (T16)	159.3750N	192.8 (T16)	FIXED WING AIRCRAFT AIR TO GROUND		
CALCORD	15	MEDICAL	156.0750N	156.7 (T6)	156.0750N	156.7 (T6)			
GUARD 27	16	EMERGENCY	168.6250N		168.6250N	110.9 (T1)	AIR GUARD		
9. Prepared by: Name:									
Josh Anderson			RESL			Signature: 			
ICS 204									
			Date/Time: 9/4/2020 2200			Personnel Count: 40			

NIMS IAP

CONTROLLED UNCLASSIFIED INFORMATION//BASIC

ASSIGNMENT LIST (ICS 204 WF)

CONTROLLED UNCLASSIFIED
INFORMATION//BASIC

1. Incident Name:		2. Operational Period:				3. Branch		Group	
SCU LIGHTNING COMPLEX		Date From: 09/05/20	Date To: 09/06/20			Suppression Repair		4	
		Time From: 0700	Time To: 0700						
4. Operations Personnel:									
Operations Section Chief: M. Jonsson					Night Ops:				
Branch Director: S. Ward (12) / E. Orre (12) / R. McLaughlin (12)					Branch Safety:				
Division/Group Supervisor: B. Willson (T) (12) / D. Balao (T) (12)					Air Attack:				
5. Resources Assigned:									
** Resources Below in Bold are 12 Hour **									
Resource Identifier	ALS	LWD	Leader	Personnel	Request #	Hours	Reporting Location		
T/F IDAHO 1			J. Cook	17	E-374	0700-1900	ICP		
STH BTU 9213H			J. Wells	31	C-88	0700-1900	ICP		
CRW T-2 C-17			C. Hubbard	1	C-17	0700-1900	ICP		
DOZ PVT E-1			J. Worrell	1	E-1	0700-1900	ICP		
DOZ PVT E-212			T. Stevenson	1	E-212	0700-1900	ICP		
DOZ PVT E-222			S. Mahood	1	E-222	0700-1900	ICP		
DOZ PVT E-395			J. Willburn	1	E-395	0700-1900	ICP		
CHP PVT E-565			H. Osborn	3	E-565	0700-1900	ICP		
CHP PVT E-566			D. Knapp	2	E-566	0700-1900	ICP		
EXC PVT E-455			S. Forde	1	E-455	0700-1900	ICP		
EXC PVT E-544			M. West	1	E-544	0700-1900	ICP		
EXC PVT E-546			T. Anderson	1	E-546	0700-1900	ICP		
EXC PVT E-567			P. Bauer	1	E-567	0700-1900	ICP		
EXC PVT E-569			J. Alexander	1	E-569	0700-1900	ICP		
GRD PVT E-463			K. Jones	1	E-463	0700-1900	ICP		
MAST PVT E-536			J. Burkett	1	E-536	0700-1900	ICP		
W/T PVT E-5			K. Merwin	1	E-5	0700-1900	ICP		
W/T PVT E-7			D. Escobar	1	E-7	0700-1900	ICP		
6. Work Assignments:									
Assess fire suppression needs and follow plan where directed.									
7. Special Instructions:									
Use appropriate command channel based off of working location.									
Resources identified with an * to report to the Tree Project on HWY 130									
All resources in suppression repair are twelve hour resources.									
8. Communications									
Name	Ch	Function	Rx Freq	Rx Tone	Tx Freq	Tx Tone	Notes		
NIFC C40	6	COMMAND	173.7500N	131.8 (T3)	163.8250N	131.8 (T3)	COPERNICUS PK LINKED W/CMD 3, 10, 11, & 38		
VFIRE 24	12	TACTICAL	154.2725N	156.7 (T6)	154.2725N	156.7 (T6)			
CDF T15	13	ROTARY A/G	159.2700N	192.8 (T16)	159.2700N	192.8 (T16)	ROTARY AIRCRAFT AIR TO GROUND		
CDF T20	14	FIXED WING A/G	159.3750N	192.8 (T16)	159.3750N	192.8 (T16)	FIXED WING AIRCRAFT AIR TO GROUND		
CALCORD	15	MEDICAL	156.0750N	156.7 (T6)	156.0750N	156.7 (T6)			
GUARD 27	16	EMERGENCY	168.6250N		168.6250N	110.9 (T1)	AIR GUARD		
9. Prepared by: Name:									
Josh Anderson			RESL			Signature: 			
ICS 204									
			Date/Time: 9/4/2020 2200			Personnel Count: 67			


NIMS IAP

CONTROLLED UNCLASSIFIED INFORMATION//BASIC

MEDICAL PLAN (ICS 206)

1. Incident Name: SCU LIGHTNING COMPLEX		2. Operational Period: Date From: 9/5/20 Date To: 9/6/20 Time From: 0700 Time To: 0700					
3. Medical Aid Stations:							
Name	Location	Contact Number/Freq	Paramedics				
Cal Mat - California Medical Assistance Team	ICP	(530) 417-4560	Yes				
MERT	ICP	(530) 417-4560	<input type="checkbox"/> No				
Cal Mat - California Medical Assistance Team	Gilroy Camp - Christmas Hill Park	(530) 417-4560	Yes				
4. Transportation (Indicate air or ground):							
Ambulance Service	Location	Contact Number	Level of Service				
M801, M58 (Ground)	Branch I	Lightning Communication	ALS				
M7191, M7702 (Ground)	Branch II	Lightning Communication	ALS				
M50, M57 (Ground)	Branch II	Lightning Communication	ALS				
Stanford Life Flight (Air)	Stanford - Santa Clara County	Lightning Communication	ALS				
CAL FIRE Copter 106 (Day Hoist)	Morgan Hill Dispatch	Lightning Communication	BLS				
5. Hospitals:							
Hospital Name	Address,	Contact Number(s)/ Frequency	Travel Time		Trauma Center	Burn Center	Helipad
	Lat & Long		Air	Ground			
St. Louise Regional Medical Center	9400 No Name Uno, Gilroy N37°02'08.24, W-121°34'16.15	(408) 848-8680	:31	1:35		<input type="checkbox"/>	<input checked="" type="checkbox"/>
Santa Clara Valley Medical	751 S. Bascom Ave. San Jose N37°18'50.30, W-121°56'03.28	(408) 885-6912	:22	1:18	Level1	<input checked="" type="checkbox"/>	<input checked="" type="checkbox"/>
Eden Medical Center Sutter Health	20103 Lake Chabot Rd Castro N37°41'56.28, W-122°05'21.36	(510) 727-3015	:22	1:18	Level2	<input type="checkbox"/>	<input checked="" type="checkbox"/>
Stanford Health Care - ValleyCare Medical Center	5555 W. Las Positas Blvd., Pleasanton N37°41'39.93, W-121°52'51.22	(925) 416-6525	:18	1:06		<input type="checkbox"/>	<input checked="" type="checkbox"/>
6. Special Medical Emergency Procedures							
Line Emergency Crew Supervisor will contact Division Supervisor with patient complaint/condition and location. - Division Group Supervisor Contacts: 1. Closest EMS resource 2. Communications Unit - Communications Unit Contacts: 1. Ground or Air ambulance as requested. 2. Operations 3. Safety 4. Medical Unit - Division Supervisor or designee will serve as point of contact and run medical emergency on assigned channel. 1. A pre-assigned tactical frequency (i.e. CALCORD) should be used for IWI and only for duration of the emergency. - Communications Unit will clear the Command channel for emergency traffic as needed for duration of the need. Camp Emergency Contact Medical Unit with patient complaint/condition and location. Medical staff will respond to stabilize the patient. - Medical Unit contacts 1. Communications 2. Safety 3. Logistics 4. Operations 5. Crew Supervisor 6. Comp/Claims				Injury Reporting Procedures Nature of Injury: _____ Location of Patient: _____ Point of Contact: _____ Transportation Requested by: Air ___ Ground ___ Point of Pick-Up: _____ Lat: _____ Long: _____ Patient Unit ID: _____ Is an EMT with Patient: Yes ___ No ___ Age: _____ Sex: Male ___ Female ___ All Emergencies - Secure the area and identified witnesses for later investigation. Keep accurate log of events.			
<input type="checkbox"/> Check box if aviation assets are utilized for rescue. If assets are used, coordinate with Air Operations.							
7. Prepared by (Medical Unit Leader): J. Segura R. Beeson (T)				Signature:			
8. Approved by (Safety Officer): J. Buchmeier J. Novak (T)				Signature:			
ICS 206		NIMS IAP		Date/Time:		9/4/2020 17:30	

ICS 205 - INCIDENT RADIO COMMUNICATIONS PLAN


1. Incident Name: SCU LIGHTNING COMPLEX BRANCH I		2. Date/Time Prepared Date: 09/04/2020 Time: 1930		3. Operational Period: Date From: 09/05/20 Time From: 0700		Date To: 09/06/20 Time To: 0700		
4. Communications								
Ch#	Function	Name	Assigned To	Rx Freq	Rx Tone	Tx Freq	Tx Tone	Notes
1								
2	COMMAND	NIFC C3	ALL BRANCHES	170.4250N	131.8 (T3)	168.0750N	131.8 (T3)	MT OSO LINKED W/CMD 10, 11, 38, & 40
3	COMMAND	NIFC C10	ALL BRANCHES	170.4125N	131.8 (T3)	165.9625N	131.8 (T3)	MT PACHECO LINKED W/CMD 3, 11, 38, & 40
4	COMMAND	NIFC C11	ALL BRANCHES	170.6875N	131.8 (T3)	166.5750N	131.8 (T3)	MT ALLISON LINKED W/CMD 3, 10, 38 & 40
5	COMMAND	NIFC C38	ALL BRANCHES	172.6750N	131.8 (T3)	163.0375N	131.8 (T3)	LOMA PRIETA PEAK LINKED W/CMD 3, 10, 11, & 40
6	COMMAND	NIFC C40	ALL BRANCHES	173.7500N	131.8 (T3)	163.8250N	131.8 (T3)	COPERNICUS PK LINKED W/CMD 3, 10, 11, & 38
7	TACTICAL	CDF T29	DIV V & DIV Q / R	151.3475N	192.8 (T16)	151.3475N	192.8 (T16)	
8								
9	TACTICAL	VTAC12	DIV I & DIV J / K / L	154.4525N	156.7 (T6)	154.4525N	156.7 (T6)	
10								
11								
12	TACTICAL	VFIRE 24	SUPPRESSION REPAIR	154.2725N	156.7 (T6)	154.2725N	156.7 (T6)	
13	ROTARY A/G	CDF T15	ALL BRANCHES	159.2700N	192.8 (T16)	159.2700N	192.8 (T16)	ROTARY AIRCRAFT AIR TO GROUND
14	FIXED WING A/G	CDF T20	ALL BRANCHES	159.3750N	192.8 (T16)	159.3750N	192.8 (T16)	FIXED WING AIRCRAFT AIR TO GROUND
15	MEDICAL	CALCORD	ALL BRANCHES	156.0750N	156.7 (T6)	156.0750N	156.7 (T6)	
16	EMERGENCY	GUARD 27	ALL BRANCHES	168.6250N		168.6250N	110.9 (T1)	AIR GUARD
17								
18								
19								
20	EMERGENCY	GUARD 27	ALL BRANCHES	168.6250N		168.6250N	110.9 (T1)	AIR GUARD
5. Special Instructions								
TO CONFIRM YOU HAVE THE MOST CURRENT CLONE, ENSURE YOUR DISPLAY OF CHANNEL 16 OR 20 MATCHES CHANNEL 16 OR 20 OF THE 205 - HEIGHT AND POWER ARE KEY WHEN USING RADIOS; BE AT A HIGH POINT, USE A MOBILE IF POSSIBLE, AND USE RADIO RELAYS WHEN NEEDED								
Prepared by (Communications Unit Leader): Name: John Brooks, IMT6				Signature: 				
ICS 205 - CONTROLLED UNCLASSIFIED INFORMATION//BASIC				Date/Time: 09/04/20 1930				

ICS 205 - INCIDENT RADIO COMMUNICATIONS PLAN

1. Incident Name: SCU LIGHTNING COMPLEX BRANCH II		2. Date/Time Prepared Date: 09/04/2020 Time: 1930		3. Operational Period: Date To: 09/06/20 Time To: 0700	
--	--	--	--	---	--

4. Communications								
Ch#	Function	Name	Assigned To	Rx Freq	Rx Tone	Tx Freq	Tx Tone	Notes
1								
2	COMMAND	NIFC C3	ALL BRANCHES	170.4250N	131.8 (T3)	168.0750N	131.8 (T3)	MT OSO LINKED W/CMD 10, 11, 38, & 40
3	COMMAND	NIFC C10	ALL BRANCHES	170.4125N	131.8 (T3)	165.9625N	131.8 (T3)	MT PACHECO LINKED W/CMD 3, 11, 38, & 40
4	COMMAND	NIFC C11	ALL BRANCHES	170.6875N	131.8 (T3)	166.5750N	131.8 (T3)	MT ALLISON LINKED W/CMD 3, 10, 38 & 40
5	COMMAND	NIFC C38	ALL BRANCHES	172.6750N	131.8 (T3)	163.0375N	131.8 (T3)	LOMA PRIETA PEAK LINKED W/CMD 3, 10, 11, & 40
6	COMMAND	NIFC C40	ALL BRANCHES	173.7500N	131.8 (T3)	163.8250N	131.8 (T3)	COPERNICUS PK LINKED W/CMD 3, 10, 11, & 38
7	TACTICAL	CDF T31	DIV M / N	159.3825N	192.8 (T16)	159.3825N	192.8 (T16)	
8								
9	TACTICAL	VTAC 13	DIV O & DIV T	158.7375N	T6 - 156.7	158.7375N	T6 - 156.7	
10								
11								
12	TACTICAL	VFIRE 24	SUPPRESSION REPAIR	154.2725N	156.7 (T6)	154.2725N	156.7 (T6)	
13	ROTARY A/G	CDF T15	ALL BRANCHES	159.2700N	192.8 (T16)	159.2700N	192.8 (T16)	ROTARY AIRCRAFT AIR TO GROUND
14	FIXED WING A/G	CDF T20	ALL BRANCHES	159.3750N	192.8 (T16)	159.3750N	192.8 (T16)	FIXED WING AIRCRAFT AIR TO GROUND
15	MEDICAL	CALCORD	ALL BRANCHES	156.0750N	156.7 (T6)	156.0750N	156.7 (T6)	
16	EMERGENCY	GUARD 27	ALL BRANCHES	168.6250N		168.6250N	110.9 (T1)	AIR GUARD
17								
18								
19								
20	EMERGENCY	GUARD 27	ALL BRANCHES	168.6250N		168.6250N	110.9 (T1)	AIR GUARD

5. Special Instructions
 TO CONFIRM YOU HAVE THE MOST CURRENT CLONE, ENSURE YOUR DISPLAY OF CHANNEL 16 OR 20 MATCHES CHANNEL 16 OR 20 OF THE 205 - HEIGHT AND POWER ARE KEY WHEN USING RADIOS; BE AT A HIGH POINT, USE A MOBILE IF POSSIBLE, AND USE RADIO RELAYS WHEN NEEDED

6. Prepared by (Communications Unit Leader): Name: John Brooks, IMT6		Signature: 	
ICS 205 - CONTROLLED UNCLASSIFIED INFORMATION/BASIC		Date/Time: 09/04/20 1930	

TRAINING MESSAGE

DEMOBING???

PLEASE REMEMBER TO BRING THE FOLLOWING

COMPLETED DOCUMENTS

WITH YOU TO TRAINING:

- **TASK BOOK**
- **ICS 225** - *Please ensure signatures of both trainer and trainee are on the 225*
- **TASK BOOK EVALUATION RECORD**

DON'T TRAIN UNTIL YOU GET IT RIGHT, TRAIN UNTIL YOU CAN'T GET IT WRONG!!

Any questions please contact the Training Specialist:

Shane Vargas (530) 410-4225

Dottie Shaw (619) 971-1701

Ian Crossley (530) 681-5100



CAL FIRE INCIDENT MANAGEMENT TEAM 6

Jeff Veik- INCIDENT COMMANDER



DEMOBILIZATION PLAN - SUMMARY SCU Lightning Complex CA-SCU-005740

GENERAL INFORMATION

The Demobilization Plan is developed to facilitate the orderly removal and checkout of resources on the incident. By definition; surplus personnel are available for release if they have rested for a minimum of 8 hours, are cleaned up, outfitted and have a vehicle ready to depart to their next destination.

GENERAL GUIDELINES

- **NO RESOURCES WILL LEAVE THE INCIDENT UNTIL AUTHORIZED TO DO SO BY THE DEMOB UNIT.**
- Efforts will be made to ensure that all released personnel arrive at their destination prior to 2200 hours.
- All Resources will arrive at the Demobilizations Unit at their scheduled time Only.
- **All Rental Vehicles will receive a safety inspection prior to leaving the incident.**
- All trainees are to keep their time up to date and report to the Training Specialist with their task books and evaluations prior to completion of the demobilization process.
- All strike team leaders are responsible to call **North Ops at 1-800-237-3703** immediately upon being released from the incident

RESPONSIBILITIES

Unit Leaders will declare resources excess to their **Section Chief**. **Section Chiefs** will declare excess resources to the Planning Section Chief through the **Resource Unit Leader**. This should be done 36 hours in advance of anticipated release. Use the Declaration of Excess Resources sheet or General Message Form (ICS-213) to list all excess resources. Include the resource name, request number, name of person, date and time of declared excess, and time in which the resource will be eligible to leave. Send to the **RESOURCE UNIT** where the resource will be determined to be surplus to the incident. Surplus resources will then be able to report to the **DEMOB UNIT**, receive a Demobilization Checkout Form (ICS 221), get the appropriate ICS 221 signatures, and then return the completed ICS 221 to the **DEMOB UNIT** prior to final release or reassignment. Resources are not to contact **North Ops** or the expanded dispatch center unless instructed to do so by the Demobilization Unit.

RELEASE PRIORITIES

1. **Organized fire departments**
2. **OES engines**
3. **Hired personnel and equipment**
4. **Other agencies (USFS, BLM, etc.)**
5. **Out of region CAL FIRE forces**
6. **Within Region CAL FIRE Forces**
7. **Unit CAL FIRE Forces**

TRAVEL INFORMATION

All resources will meet agency specific requirements on hours of travel per day. For CAL FIRE hand crews, a full 24 hour reset period shall be adhered to before departing from the incident. After a crew's last operational period they shall begin the demobilization release procedure during their 24 hour off shift. In addition, they must use the following complete 24-hour period as reset time before they depart from the incident.

ATTN: Federal Resources (specifically Federal Contracted Resources/ADs)

RE: Virtual Finance Support

If you are assigned to a CAL FIRE managed incident, you have noticed that there is no “federal” time unit on site. We have developed a virtual finance section to provide you with your invoices/time sheets. We will need for you to **scan and email** your documents to the R5.CalFire.Support@firenet.gov email address. (The CAL FIRE finance section may have a scanner available if you do not have a “scanning” app on your phone and/or computer.) In the subject line enter:

TIME - Resource # - Company/Person Name – Attachment description - Fire Name/Number

Contract Crew/Equipment:

We need for you to send us the following information (even if you have submitted it to the CAL FIRE finance unit):

- Contact name, phone number, and email for on-site “leader”
- Resource Order
- Contract (Pages 1-2 and any additional pages referencing equipment/resource information)
- Crew Manifest
- Inspection (if one was done)
- Shift Tickets (signed by you and your incident supervisor) / CTRs (signed by your incident supervisor)

Administratively Determined (AD) Resources:

We need for you to send us the following information:

- Contact phone number and email
- Resource Order
- Casual Hire Form
- CTRs (signed by your incident supervisor)

Federal Employees:

As of right now, we are not planning to create OF-288s for Federal “regular” employees. Each of you can utilize your CTRs as your backup documentation for submitting your time sheets.

IF, however you require an OF-288, we will do our best to accommodate your needs. If you are claiming Hazard Pay, just like always, you must provide a justification for the claim (“H=Hazard”) is NOT enough. Use “action verbs” to explain what/why you are claiming the hazard.

WHEN YOU ARE CLOSE TO DEMOB:

- Give Finance a “Courtesy Email” 1-2 days prior to make sure all your documents have been received.
- Submit all time documentation (including travel home) ahead of demob.
- Send an email the morning of your demob to the Support email so the demob process can be started from the virtual finance group.

INJURY/CLAIMS:

If you have an injury and or claim concern, send an email to the inbox below and our Claims Specialist will get in touch with you. Provide a **name**, **cell phone number**, and **email address**.

EMAIL: R5.CalFire.Support@firenet.gov

Please do not wait until the end of your assignment to get us your information. Since we are virtual, the process will take additional time.

eFC-33 INITIAL INPUT FORM

1 2 3 4 5 6 7

Overhead: complete one form per person.
All Others: complete one form per vehicle.

Request Number

State: Agency	Incident Number	Incident Name	Incident Index Code	Incident PCA Code
INCIDENT CA				

Strike Team	Resource ID: Fire Assignment	Home Station / Office Location
RESOURCE S T	E-3499	PASO ROBLES

YOUR NORMAL DUTY SCHEDULE	24 Hr: 24 Hr 8-8 7-7 Other	Portal to Portal?	YOUR AGENCY	HOME UNIT	COMMIT RELEASE	YOUR CELL PHONE #
<input checked="" type="checkbox"/> One Box		<input checked="" type="checkbox"/>	CAL FIRE	S L U		

PERSONNEL	Schedule		First Name	Last Name	Rank or Classification	# of Regular Duty Scheduled Hours per Day										
	A	B				Mon	Tue	Wed	Thu	Fri	Sat	Sun				
EMPLOYEE 1																
EMPLOYEE 2																
EMPLOYEE 3																
EMPLOYEE 4																
EMPLOYEE 5																
EMPLOYEE 6																
	<input checked="" type="checkbox"/> One Box		Johnson	Robert	FC											

VEHICLE	Schedule	Other	If Other, explain	Radio ID	Kind of Vehicle	ID No/X No
	A	B				
VEHICLE 1						X
VEHICLE 2						X
	<input checked="" type="checkbox"/> One Box			E-3499	FTH	
		Chainsaw Quantity:	Portable Pump?			



Put a Dozer and It's Transport on a single form. All others, use one form per individual vehicle.

ADDITIONAL INFO

SHIFT TICKET EXAMPLE

EMERGENCY SHIFT TICKET and EVALUATION FORM					Contractor Name DOZER DUDE						
Incident or Project Name SCU LIGHTNING COMPLEX		Incident Number CASCU 005740	Request Number E#		Operator #1 BOB SMITH	Operator #2 TOM SMITH					
Agreement Number XXX - 000000 - 00											
Equipment Make CAT		Equipment Model / Type D6XM									
Serial Number 111111		Licence Number 111111									
Equipment Use (Circle) Hours Days / Miles											
Date Mo / Day	Start	Stop	Work	Assignment							
8/17	0700	2400	17	DIV M							
8/18	0001	0700	7	DIV M							
Vendor Rating					Govt. Rep. Name and Position - PRINT Mike Weber						
<table border="1"> <tr> <td>Poor*</td> <td>Avg.</td> <td>Good</td> <td>Exc.</td> <td>N/A</td> </tr> </table>					Poor*	Avg.	Good	Exc.	N/A	Govt. Rep. Signature <i>Mike Weber</i>	
Poor*	Avg.	Good	Exc.	N/A							
Met Performance Expectations					Contractor Signature <i>Bob Smith</i>						
Equipment in Safe Working Condition					Date 08/18/20						
Operator Skill Level					Time 0800						
Operates Safely					Remarks/Comments ** NO DAMAGE/ NO CLAIMS						
Operator's Cooperation Level					CALFIRE 297 (Rev 3-2011)						
Overall Performance					<p>* NOTE: Any rating of POOR requires an explanation in Comment Section.</p> <p>**Final evaluation or for more documentation, use an ICS Form 230 or equivalent.</p>						
Pink - Finance		Blue - Home Unit HE Coordinator		Yellow - Vendor		White - Govt Representative					

EMERGENCY SHIFT TICKET and EVALUATION FORM					Contractor Name DUDE TRANSPORT						
The responsible Government Officer will complete this form each shift					Operator #1 BOB SMITH						
Incident or Project Name SCU LIGHTNING COMPLEX		Incident Number CASCU 005740	Request Number E # Here		Operator #2 TOM SMITH						
Agreement Number XXX - 000000 - 00											
Equipment Make TRANSPORT/ KENWORTH		Equipment Model / Type COZAD TRAILER /26 WHEELS									
Serial Number 1XP3ESMP14239012		Licence Number 9999999									
Equipment Use (Circle) Hours Days / Miles											
Date Mo / Day	Start	Stop	Work	Assignment							
8/17	0700	2400	17	DIV M							
8/18	0001	0700	7	DIV M							
Vendor Rating					Govt. Rep. Name and Position - PRINT Mike Weber						
<table border="1"> <tr> <td>Poor*</td> <td>Avg.</td> <td>Good</td> <td>Exc.</td> <td>N/A</td> </tr> </table>					Poor*	Avg.	Good	Exc.	N/A	Govt. Rep. Signature <i>Mike Weber</i>	
Poor*	Avg.	Good	Exc.	N/A							
Met Performance Expectations					Contractor Signature <i>Bob Smith</i>						
Equipment in Safe Working Condition					Date 08/18/20						
Operator Skill Level					Time 0800						
Operates Safely					Remarks/Comments ** NO DAMAGE/ NO CLAIMS						
Operator's Cooperation Level					CALFIRE 297 (Rev 3-2011)						
Overall Performance					<p>* NOTE: Any rating of POOR requires an explanation in Comment Section.</p> <p>**Final evaluation or for more documentation, use an ICS Form 230 or equivalent.</p>						
Pink - Finance		Blue - Home Unit HE Coordinator		Yellow - Vendor		White - Govt Representative					

Turn shift tickets into Time Unit.

STATE OF CALIFORNIA
DEPARTMENT OF FORESTRY AND FIRE PROTECTION
PROPERTY CERTIFICATION OF LOCATION OR DAMAGE
CERTIFICATE OF RESPONSIBILITY FOR INCIDENT OCCURRENCE
CAL FIRE-101 page 1 of 2 (1/07)

Incident #:
Request #:

DOC. NUMBER:

LOCATION / INCIDENT NAME:	INCIDENT NUMBER:	UNIT:	REGION:	DATE:
---------------------------	------------------	-------	---------	-------

THE FOLLOWING ARTICLES WERE: (broken, left on line, damaged, or other)	DATE OF OCCURRENCE:
--	---------------------

QUANTITY	UNIT OF MEAS.	CAL FIRE STOCK NUMBER (COMPLETE WHENEVER ASSIGNED)	DESCRIPTION (INDICATE SIZE, MAKE, MODEL, TYPE, ETC., TO CLEARLY DESCRIBE THE ITEM, PROVIDE ADEQUATE DATA TO EFFECTIVELY IDENTIFY EQUIPMENT OR PROPERTY.)	PROPERTY NUMBER

DIV: _____ **DIV's Name:** _____

DIV. Signature: _____

LOCATION OF ITEMS: _____

REMARKS: _____

SIGNATURE OF PERSON CERTIFYING OCCURRENCE AS DESCRIBED

SIGNATURE:	PRINTED NAME:	TITLE:	DATE:
------------	---------------	--------	-------

UNIT SUPERVISOR'S APPROVAL

COMMENTS: _____

SIGNATURE OF UNIT ADMINISTRATOR:	TITLE:	DATE:
----------------------------------	--------	-------



PUBLIC INFORMATION



Official Sources of Public Information

Incident Information Line: 916-618-3195

Incident Media Line: 925-588-6809

Incident Website: www.fire.ca.gov

Email Signup: <https://tinyurl.com/CALFIREMEDIA>



EMAIL SIGN UP



EVACUATION MAPS

STATUS	
Incident Start Date: August 16, 2020	Incident Start Time: 4:00 AM
Acreage:	Containment:
Cause: Under Investigation	Total Personnel:

Media Law

The California State Penal Code Section 409.5(d) allows the news media to enter scenes of disaster, riot, or civil disturbance. Properly identified members of the news media should not be restricted from entering locations specified within the code. However, this does not include crime scenes, and does not imply that the news media may interfere with incident operations while they are in the areas of concern. If entering such a location that is hazardous, they should be advised; media access cannot be prevented for safety reasons unless their presence would impede CAL FIRE's mitigation of the incident or the disturbing of evidence. When working around the media, remember:

- Media **is not permitted** on private property without the property owners permission.
- If approached and questioned by the media and or the public, talk about your assignment or task at hand. Remember to wear all the appropriate PPE.
- If needed call for an incident PIO through the chain of command.
- Never speculate, give opinions or speak for others.
- There is no such thing as an "off the record" comment.

CAL FIRE Social Media Policy (Social Media 0691)

Social Media is increasingly being used by public agencies, the media as well as the public. This form of communication continues to grow rapidly in order to supply the instant gratification needs of society. Therefore when on a CAL FIRE incident you will adhere to the CAL FIRE Social Media Policy, 0691. You can get further information about the CAL FIRE Social Media Policy from the incident Public Information Officer. While assigned to the incident, there will be no posting of:

- Inappropriate information or materials, no opinions, no endorsements, inappropriate pictures or videos

Lost and Found

The Information Section will manage Lost and Found items for the incident. If you have lost an item leave your contact information and what you have lost at the Information Section. If you have found an item on the incident bring the item to the Information Section with your contact information as well.

Incident Base Camp Mailing Address

c/o Public Information Office/Trailer

4501 Pleasanton Ave.

Pleasanton, CA 94566

Pleasanton Ave Street Entrance

Peer Support Team Message:

INCIDENT PEER SUPPORT:

We have a few people on the incident for any peer support related needs. The best way to get a hold of them is to call them directly.

John Kiszka-530 598-2615

Amber Henderson-805 794-1690

Clinician

Jill Gustafson-530 957-8020

or

CAL FIRE Peer Support/Helpline

916-445-4337

Below are other Team Members not on the incident who can also be contacted directly:

Tony Howard 916-224-1543

Mike Aiello 916-584-0548

Warren Parrish 916-823-6641

Shawna Powell-530 717-0667

Nikole Schutz 916-709-0434

Amy Head 916-956-3277

Chris Lomanto 916-247-6974

Connie Quarisa 916-213-8697

In addition to peer support, if there is a need, we can have a culturally competent Clinician available on the incident that could meet with you on an individual and/or group basis.

Watch for the signs and symptoms of stress in yourself and the people around you. Try and stay positive and get much needed rest when you can. We can do this, together!

Stay Healthy, Stay Alert and Stay Strong!

CAL FIRE Employees can also contact EAP directly at: 1-866-327-4762

FIRE SUPPRESSION REPAIR

SCU LIGHTNING COMPLEX

CA SCU-005740

Fire Suppression Repair (FSR) is the repair of damage caused directly from fire suppression activities, it is not the rehabilitation of areas damaged by the fire. See also CAL FIRE Handbook 7773

Start Early!

Repair work should start as soon as practical but shall not hamper or conflict with fire suppression actions or compromise firelines.

When operationally feasible, Divisions can assist by flattening berms and constructing waterbars on dozer lines and underslung hand lines. Scattered trash, missed hose, etc. shall be collected and deposited at Drop Points for backhaul. Police your areas.

Repair Work Inventory:

Assistance is requested in identifying FSR needs. Please provide location, type of repair and a reporting contact. Reporting can be done:

- In-person to the FSR Branch at Building "R" at the ICP
- Through your chain of command
- Scu.lightning.fsr@gmail.com
- Exported Avenza line and point layers are preferable but we can accept most types of GPS and text intel. Include a picture(s) if available

Landowners reporting damage should be relayed to the FSR Branch. The FSR Branch has foresters, archaeologists and other environmental who will evaluate each site, develop a repair plan, and schedule the repair with appropriate resources.

Infrastructure Damage:

Report the location and type of suppression damage to infrastructure. Common examples include:

- Fences /gates
- Culvert/ Bridge/ Other watercourse crossings
- Developed water sources
- Utility distribution line; above/below ground.
- Restore barriers on roads previously closed but opened for suppression activities.
- Remove trash and debris, including flagging and signs when no longer needed.
- Misc. damage to infrastructure.

Natural Resource Damage:

This category represents repairing problems caused by fire suppression activities (direct effect) and to prevent likely future problems such as accelerated erosion caused by winter rains (indirect effect).

- Construct drivable waterbars or rolling dips on unsurfaced roads.
- Construct waterbars on all dozer and hand lines according to the following Specifications: Water bars shall be cut diagonally into firm soil at least 6" deep and have a berm at least 12" in height. Water bar should have a 30-45 degree angle to the fall line. Outlets must be open and directed onto the least erodible material possible.

Slope or Road Gradient (%)	0-10%	11-25%	26-50%	>50%
Waterbreak Spacing	100'	100'	75'	50'

- Flatten berms along roads and firelines to maintain natural drainage patterns. If berms are necessary along a road segment, cut breach outlets periodically.
- Remove soil and debris deposited by fire suppression activities from drainage facilities and culvert inlets.
- Slash and soil deposited into watercourses shall be removed and stabilized as feasible.
- Work within 100 feet of a watercourse, cultural site or other sensitive location shall be performed with guidance from the FSR Group.
- Slash from felled trees adjacent to roads shall be lopped and scattered, chipped or piled for burning.
- Scattered trash, missed hose, etc. shall be collected and deposited at Drop Points. Police your areas.

Cultural Sites:

Immediately report the location of any known or suspected archaeological/historical site through the chain of command to the incident Archaeologist and/or the FSR Branch. Indicate the type of impact, including retardant coverage. Avoid further disturbance if operationally feasible and flag the site perimeter. Otherwise, use the least disturbing suppression methods possible. Removing artifacts or vandalizing a site is a violation of State and Federal law.

Comp Claims Issues:

Damaged resources that are too large or complex for the Fireline Suppression Group to handle shall be turned over to the IMT #6 Comp/Claims Unit. Examples of such issues include damage to pavement, bridges, pipelines, etc.

Fire Suppression Repair Report Form

List any special type of material/equipment/personnel needed. (Fencing materials, tools, dozer, backhoe, stakeside, handcrew, etc.) Provide landowner contact info if known.

Division _____ Form completed by _____ Phone _____ Date _____

Work needed/Location

Fence/gate repair _____

Waterbars _____

Road Repair _____

Watercourse cleanout _____

Culvert cleanout/repair _____

Trash/Hose pickup _____

Hazard Trees _____

Other _____

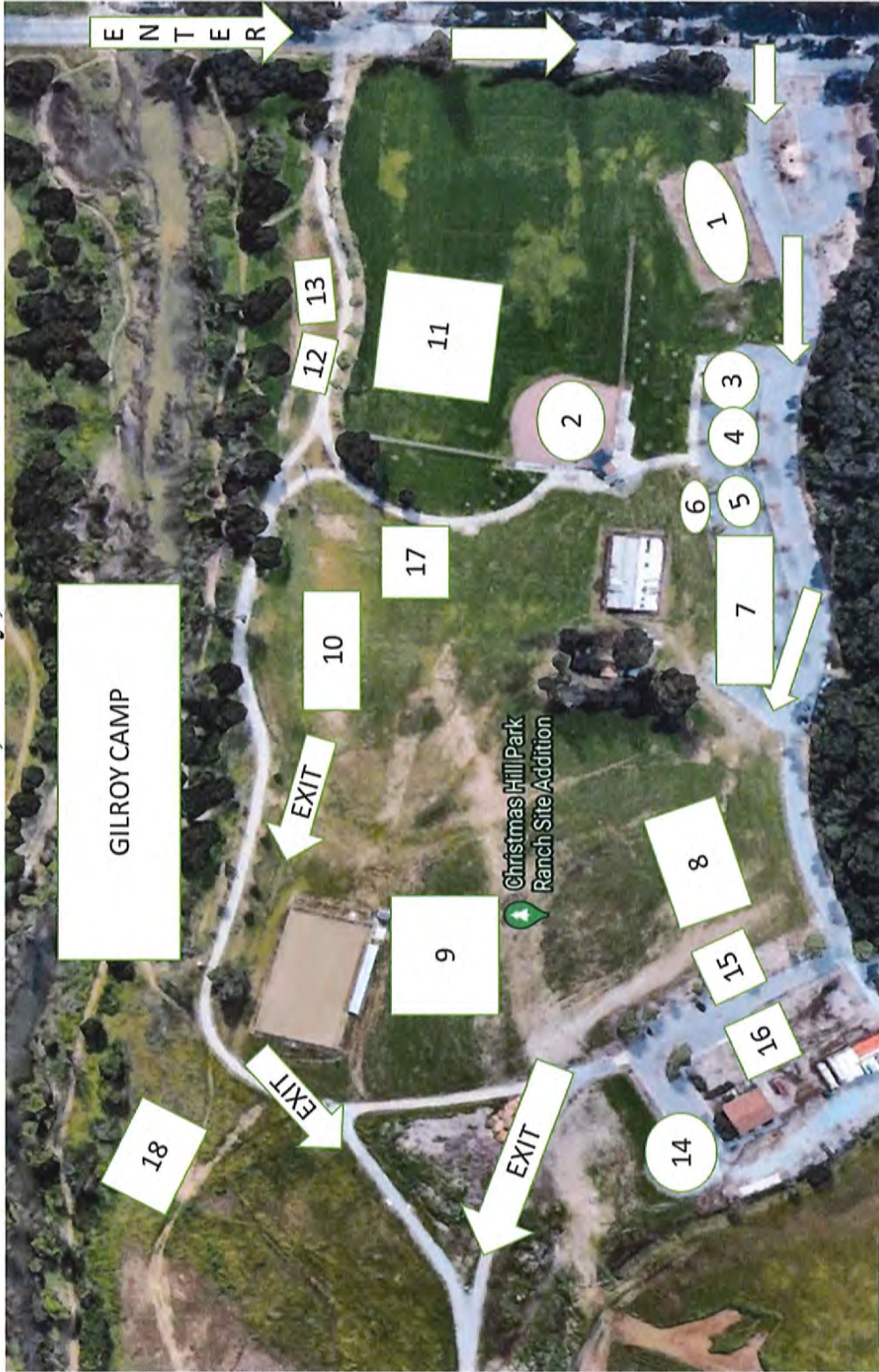
SCU LIGHTNING COMPLEX INCIDENT FACILITIES MAP

CA SCU 005740



1	Ground Support	6	CCC Sleeping	11	Tools & Equipment	16	Showers	21	Motels	26	Reusable-Grey-Water	31	Sheriff-ALGO	36	Operations	41	IC
2	Fuel	7	Tents	12	Lunches	17	Laundry	22	CAL OES	27	InclNet	32	Finance	37	COMMS	42	Plans
3	Dozer/Heavy Equip	8	Water	13	CAL MAT	18	Comp Claims	23	Facilities	28	Briefing	33	Safety	38	Liason	43	Situation
4	Vendor Staging	9	Supply	14	COVID Testing	19	Check-In & Demob	24	Food Unit	29	Employee Support Services	34	FBAN	39	Resources	44	JHC
5	Vendor Sleeping	10	Ice	15	Sleep-Traillers	20	Time Unit	25	Inmate Tents	30	Medical	35	Ordering/LOGS	40	Clerical	45	PIO

Christmas Hill Park
 7050 Miller Road, Gilroy, CA 95020



1. Feeding
2. Briefing
3. Plans
4. Motel, Logs
Medical
5. Finance
6. Copy trailer
7. Overhead
8. Engines
9. Dozers
10. Fuel
11. Sleeping
12. Showers
13. Laundry
14. Supply
15. Hydration
16. Lunches
17. Med tent
18. Trailer
camping

ALL HEAVY EQUIPMENT enter off of Grenache Way (use 7121 Grenache Way for GPS directions)

All others use Miller Road as your main entrance

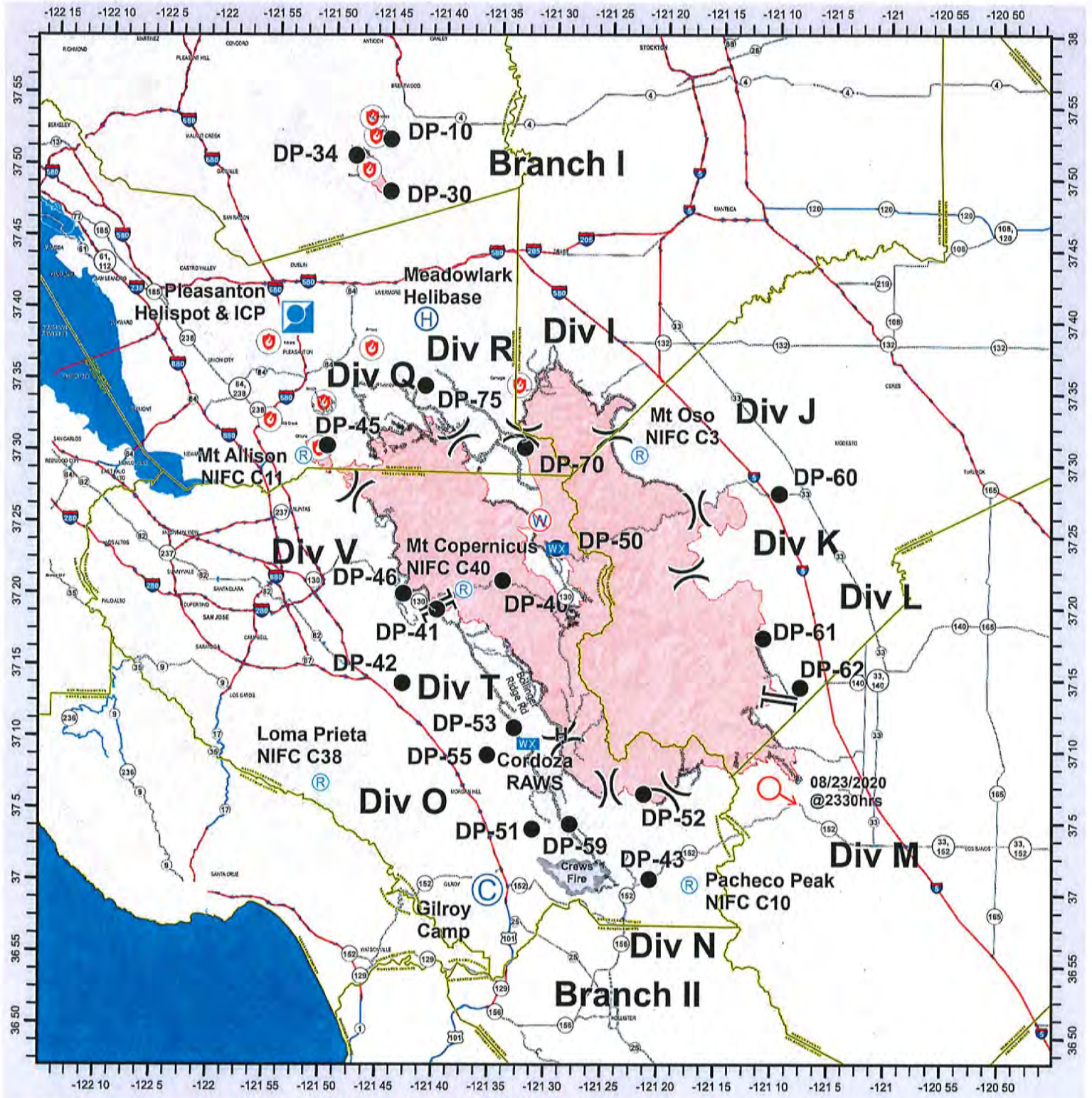
Gilroy Camp
Fuel is located at Gilroy High School 750 W 10 St Gilroy



Fuel is located at Gilroy High School 750 W 10th St, Gilroy CA 95020



SCU LIGHTNING COMPLEX INCIDENT TRANSPORTATION MAP CA SCU 005740



CAL FIRE - INCIDENT MANAGEMENT TEAM 6 *Established 1994*



DISCLAIMER: This document contains data for informational purposes only. It is not intended for use as a legal document. The information contained herein is subject to change without notice. CAL FIRE is not responsible for any errors or omissions in this document.

