

** * CORRECTED * **

INCIDENT ACTION PLAN SCU LIGHTNING COMPLEX

CA-SCU-005740

Thursday



OPERATIONAL PERIOD

8/27/2020 0700
to
8/28/2020 0700



INCIDENT OBJECTIVES (ICS 202)

1. Incident Name: SCU LIGHTNING COMPLEX	2. Operational Period:	Date From: 8/27/2020 Time From: 0700	Date To: 8/28/2020 Time To: 0700
---	-------------------------------	---	-------------------------------------

3. Objective(s):

- Management Objectives**
- Provide for emergency personnel and public safety at all times.
 - Ensure COVID-19 precautions and best practices are met at all times.
 - Protect property, improvements, and infrastructure.
 - Ensure repopulation takes place in a quick, efficient, and effective manner.
 - Ensure coordinated, timely and accurate release of public information.
 - Foster and maintain relationships with all cooperators and stakeholders.
 - Protect economic, natural, cultural and heritage resources.
 - Maintain fiscal accountability and keep costs commensurate with values at risk.

- Control Objectives**
- Keep the fire North of Panoche Rd., Cienega Rd., and San Juan Canyon Rd
 - Keep the fire West of I-5
 - Keep the fire South of I-580
 - Keep the fire East of I-680 and Hwy 101

General Situational Awareness:

Steep and rugged terrain, critically dry and receptive fuel beds, active area for fire history and drought stressed trees.

In the COVID-19 environment, high density populations or large groups are particularly at risk. To help protect yourself, your family and to ensure all employees return home safely, make sure to practice social distancing.

Enhanced hygiene (especially handwashing), PPE & monitoring practices help limit the infection rate of first responders.


5. Site Safety Plan Required? Yes No

Approved Site Safety Plan(s) Located at:

- 6. Incident Action Plan**
- | | | | |
|---|--|--|--|
| <input checked="" type="checkbox"/> ICS 203 | <input checked="" type="checkbox"/> ICS 220 | <input checked="" type="checkbox"/> PIO Message | <input checked="" type="checkbox"/> Peer Support Message |
| <input checked="" type="checkbox"/> ICS 204 | <input checked="" type="checkbox"/> Facility Maps | <input checked="" type="checkbox"/> Transportation Map | <input checked="" type="checkbox"/> COVID-19 Safety Bulletin |
| <input checked="" type="checkbox"/> ICS 205 | <input checked="" type="checkbox"/> Weather Forecast | <input checked="" type="checkbox"/> COVID Daily Check | <input type="checkbox"/> |
| <input checked="" type="checkbox"/> ICS 206 | <input checked="" type="checkbox"/> Fire Behavior | <input checked="" type="checkbox"/> Finance Message | <input type="checkbox"/> |
| <input checked="" type="checkbox"/> ICS 208 | <input checked="" type="checkbox"/> Training Message | <input checked="" type="checkbox"/> Shift Ticket Example | <input checked="" type="checkbox"/> ICS 214 |

7. Prepared By: Gabe Garcia	Position/Title: PSC1	Signature:	
8. Approved by Incident Commander:	Jeff Veik	Signature:	

ORGANIZATION ASSIGNMENT LIST (ICS 203)

1. Incident Name: SCU LIGHTNING COMPLEX		2. Operational Period: Date From: 8/27/2020 Time From: 0700		Date To: 8/28/2020 Time To: 0700	
3. Incident Commander(s) and Command Staff:			7. Operation Section:		
IC/UC's	J.Veik / A. Mitchell (T)	Operations	S. Corn		
Deputy	M. Blankenheim / D. Martin (T)	Deputy Operations	T. Ernst / S.Lane (T)		
Safety Officer	J. Buchmeier / J. Novak (T)	Night Ops	J. McGough		
Information Officer	R. Brocchini / R. Lubben (T)	Staging Area			
Liaison Officer	M. Villalpando / J. Kiszka (T)	Branch	I	D. Esades	
4. Agency/Organization Representatives:		Division/Group	I	J. Beeson (T)	
Alameda County SO	Paul Liskey	Division/Group	J / K L	M. Barnes	
PG&E	Pam Perdue	Division/Group	Q	M. Morganstern (T)	
Contra Costa County SO	Rich Kovar	Division/Group	R	J. Salazar	
Santa Clara County OEM	Dana Reed	Division/Group	V		
State Parks	Wes Gray	Division/Group			
San Joaquin County OES	Shellie Lima	Division/Group			
Stanislaus County SO	Richard Murdock	Branch	II	S. Lanzas	
Stanislaus County OES	Aaron Wilson	Division/Group	M	W. Barteau	
Stanislaus County Fire	Eric Klevmyr	Division/Group	N	R. Engler	
CCC	Shawn Fry	Division/Group	O	M. Milojevich / Z. Main (T)	
Santa Clara County SO	Thea Lera	Division/Group	T	A. Hernandez	
TID	Jason Hicks	Division/Group			
San Francisco Water	Rick Duffey	Division/Group			
CALOES	Jim Linn	Branch	Suppression Repair	S. Ward (12) / E. Orre (12)	
East Bay Regional Park	Brian Cordeiro	Division/Group	1	S. Forman (12)	
Alameda County FD	Eric Moore	Division/Group	2	A. Anastasi (12)	
Livermore-Pleasanton	Jeff Peters (FIRE)	Division/Group			
San Benito County	E.Taylor (Sheriff) K.Mangano (EOC)	Division/Group			
Merced Co Sheriff	Ray Frastad	Division/Group			
CAL OES Fire	John Salvate	Division/Group			
5. Planning Section:		Division/Group			
Chief	G. Garcia	Division/Group			
Deputy	S. Sherwood (T)	Division/Group			
Resource Unit	J. Anderson / D. Scheurich / J. Heald (T)	Division/Group			
Situation Unit	N. Wallingford / R. Broomfield (T)	Division/Group			
Documentation Unit	M. Schaeffer	Division/Group			
Demobilization Unit	J. Worden / M. Schaeffer	Division/Group			
GISS	T. Knecht	Division/Group			
FBAN	S. Volmer	Air Operations Branch		Director:	B. Kremensky
IMET	R. Walbrun	Air Support Group Supervisor		P. Mateer	
Training Tech Spec	S. Vargas / I. Crosslay (T)	Air Tactical Group Supervisor			
6. Logistics Section		Helibase Manager		R. Johnson / L. Kalfsbeek (T)	
Chief	S. Dohman				
Deputy Chief	J. Warden	8. Finance/Administration Section:			
Supply Unit	P. Lee	Chief	G. Belk		
Facilities Unit	B.Luis/D. Zumkeller (T)	Deputy Chief	R. Browne		
Ground Support Unit	J. Luckenbach	Time Unit	J. Navarro		
Communications Unit	J. Brooks / B. Rapp (T)	Procurement Unit	J. Andrade		
Medical Unit	J. Segura / R. Beeson (T)	Comp/Claims Unit	B. Stirton		
Motel Unit	B. Brewer	Cost Unit	J. Tapia		
Prepared By: Name:	S. Sherwood	Position/Title:	PSC1	Signature:	
ICS 203		Date/Time:	8/26/2020 2300 hours		



SCU Lightning Complex Fire Weather Forecast



FORECAST NO: 9

NAME OF FIRE: SCU Lightning Complex

PREDICTION FOR: 0700 Thu-0700 Fri

UNIT: CALFIRE Santa Clara

SHIFT DATE: Aug 27th-Aug 28th

SIGNED:

Incident Meteorologist-Ryan Walbrun

TIME AND DATE

FORECAST ISSUED: 2000 Aug 26th

WEATHER DISCUSSION: The marine layer will be around 2000 feet to start the day and mix out by mid-morning along the lower slopes. Temperatures will trend slightly warmer with drying of humidity especially for elevations above 2000 feet. Prevailing wind flow will be westerly which should be favorable on the north end of Branch I in Div Q/R. Southwest winds in Div O/N should be favorable for any burn operations. Smoke should be less than previous days as the coastal fires are less active allowing for better ventilation and afternoon mixing. Gusty West winds will still be of concern afternoon and evening hours in Div M. The biggest weather related threat will continue to be nighttime drying or lowering of humidity. **Continue to expect night time lowering of the humidity from around 2am-6am, especially above 2000 feet which can lead to rapid increases in fire behavior during the pre-dawn hours from fuels burning out or burning operations.**

WEATHER FORECAST FOR THURSDAY:

WEATHER: Morning clouds below 2000 feet otherwise smoke and hazy sunshine.

TEMPERATURES: Highs 79-85 below 2000 feet and 86-92 above 2000 feet.

HUMIDITY: 28-38% wettest below 2000 feet and 17-27% above 2000 feet.

20 FT WINDS:

Ridgetop: Southwest 5-10 mph afternoon gusts 15-20 mph strongest Div Q/R and I.
Slopes : Upslope/Upcanyon 3-8 mph late afternoon gusts 12 mph Branch I drainages.
Hwy 152: Expect strong and gusty west winds **in Div M** around **Pacheco Pass** and San Luis Reservoir. **Afternoon and evening westerly gusts 30 mph.**

STABILITY/INVERSION: Strong morning inversion breaking by midday.

WEATHER FORECAST FOR THURSDAY NIGHT:

WEATHER: Smoke and haze otherwise mostly clear skies over the fire with clouds on the lower slopes.

TEMPERATURES: Lows 59-66 lower slopes and 67-76 above 2000 feet.


HUMIDITY RECOVERY: 60-70% but lowering to 20-30% above 2000 feet.

20 FT WINDS: Ridgetop: Southwest winds 5-10 mph evening gusts 15 mph.
Slopes : Downcanyon 2-5 mph.

STABILITY/INVERSION: Stable inversion layer setting up overnight.

Extended Forecast: Friday through Saturday a seasonable weather pattern sets up. Highs mid 80s to mid 90s. Humidity 18-28% with good recovery on the lower slopes. Night time drying trends will likely continue above the marine layer. Winds westerly 5-10 mph gusts 15-20 mph afternoon hours. **Significant warming and drying trend Sunday into next week with light offshore winds.**

FIRE BEHAVIOR FORECAST

FORECAST NUMBER: 10	TYPE OF FIRE: WILDFIRE
FIRE NAME: SCU LIGHTNING COMPLEX CASCU-005740	OPERATIONAL PERIOD: 8/27-8/28/20 0700-0700
DATE ISSUED: 8/26/20	TIME ISSUED: 2000
UNIT: SANTA CLARA	SIGNED:  Typed/printed: Stephen Volmer FBAN

INPUTS

WEATHER SUMMARY:

Seasonable weather will enter the area, and will last into next week. Daytime marine layer at will begin lifting by noon. Expect mid 80's on the lower western slopes, and high 80's on the interior and eastern slopes. Nighttime humidity will crash into the low 20's overnight in the areas above 2,000' elevation. Winds on the eastside will be terrain driven, while the Morgan Hill and San Jose areas will experience gusty westerly winds. **30mph west winds along Hwy152 and DIV M will be possible in the afternoon and evening.**

OUTPUTS

FIRE BEHAVIOR

FUEL MODEL	RATE OF SPREAD FT/MIN	FLAME LENGTH FT	SPOTTING DISTANCE	PROBABILITY OF IGNITION
GRASS	45-87	7	.20 mi	89%
BRUSH	45-81	19	.40 mi	89%
OAK OVERSTORY	11-21	11	.30 mi	89%

GENERAL:

Fuels are currently at seasonal levels, and below the 90th percentile. Brush fields have a large amount of dead material in them from the previous years of drought and lack of fire history. Fuels above 2,000' elevation will burn extremely well all night due to the humidity dropping and temperatures lowing minimally. When fuels, wind, and topography are all in alignment you can expect dangerous rates of spread. Expect Moisture of Extinction to hamper nighttime firing operations below 2,000'elv beginning around 2am.

*****Values above are valid for any new starts in the area*****

SPECIFIC:

- Utilize fine fuels to get depth and carry fire into the brush for firing operations.
- Take the weather often throughout the shift to track the changing trends and conditions.
- Rolling material will continue to drop into the steep drainage creating slope reversal.
- Fire activity will be reduced when fire enters overstory canopies.

AIR OPERATIONS: Visibility will clear up by noon when the inversion lifts. Expect gusty conditions over the ridgetops in the afternoon. Transport winds W 10mph. Air resources might not be available for your tactical plans due to visibility, weather, new fires, or being timed out. Have a plan in place for air resources before they arrive to maximize their efforts, and time.

Sunset 19:42 Sunrise 06:32

SAFETY

- Lookouts are a good source for current weather information. Have them posted.
- Roadways can become blocked easily due to weakened timber and branches. Don't get boxed in.
- Weather getting hotter and dryer. Watch for poor overnight humidity recovery, and track the trends.

SAFETY MESSAGE/PLAN (ICS 208)

1. Incident Name: SCU LIGHTNING COMPLEX	2. Operational Period:	Date From: 8/27/20	Date To: 8/28/20
		Time From: 0700	Time To: 0700

A secure felling area, MINIMUM OF TWO AND ONE HALF (2.5) TIMES THE HEIGHT OF THE MATERIAL BEING FELLED IN ALL DIRECTIONS, needs to be established and maintained by the faller during all tree felling operations. In addition, the entire downhill side on slopes must be secured if materials can fall/role for a long, unpredictable distance.

COVID-19: Remain diligent with masks, hygiene, and frequent hand washing; wipe down common surfaces on fire apparatus/vehicles.

SNAGS: Weakened trees are burning through and falling more frequently. Maintain your situational awareness and establish **Lookouts Communications Escape routes Safety zones!**

HYDRATION: Assure we all maintain nutrition and fluids before, during, and after work cycles; rest and seek shade or air-conditioned cab whenever possible.

FATIGUE: A factor to consider as the fire siege continues; keep members informed; acknowledge their accomplishment and hard-work, provide rest often while monitoring fire conditions.

HEADS UP: Keep informed weather conditions and how it will affect your work zone; forecast all operations and account for lag time on work rates. Utilize a Risk Matrix and establish Hazard Controls.

CONSIDER THE FOLLOWING FOR ALL DROPS: Personnel can be injured by the impact of material dropped by aircraft. Clear personnel out of the target area before the drop is conducted. If an individual is caught unaware in a drop zone.

Hold your hand tool away from your body.

Lie face down with hardhat in place and head toward the oncoming aircraft.

Grasp something firm to prevent being carried or rolled about by dropped liquid.

Do not run unless escape is ensured.

Get clear of dead snags and tops.

Be aware of rolling debris below the drop site in steep terrain.

DROP INBOUND.....CLEAR THE LINE!!! CLEAR THE LINE!!! CLEAR THE LINE!!!

4. Site Safety Plan Required? No

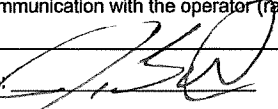
Approved Site Safety Plan(s) Located At:

5. Prepared By: J. Buchmeier / J. Novak (T) Position/Title: SOF1

ICS 208 Date/Time: 8/26/2020 / 2030

Signature: 

INCIDENT ACTION PLAN SAFETY ANALYSIS (ICS 215A)

1. Incident Name: SCU LIGHTNING COMPLEX	2. Operational Period:	Date From: 8/27/20 Time From: 0700	Date To: 8/28/20 Time To: 0700
Incident Area	Hazard/Risks	Mitigations	
ALL	COMPLACENCY	Don't underestimate the task at hand. Wear full PPE while on the line. Don't get caught off guard. Have the right radio clone.	
ALL	COVID 19	Adhere to local, state, federal, and CDC health guidelines. Maintain social distancing when applicable. Wear a mask for yourself and others. Report any symptoms immediately to a supervisor.	
ALL	FIRE BEHAVIOR	Know your LCES and maintain Situational Awareness. Use experienced Look Outs. Follow the downhill line construction guidelines. Monitor weather for changes in the wind, temp, and RH during the shift. Have a contingency plan with established decision points and Safety Zones.	
ALL	FATIGUE/HEAT/DEHYDRATION	Be alert for signs of fatigue and take breaks as necessary on hot dry days. Monitor incoming resources for level of fatigue. Drink water before, during, and after shifts, up to 1.5 gal. per shift. Be alert for signs of heat stress in yourself and others; use the buddy system. Eat small meals often and when possible. Find shade when you can. Drink electrolyte drinks at a 2:1 water/sport drink ratio.	
ALL	STEEP TERRAIN/ROLLING DEBRIS	Watch your footing while hiking in steep terrain. Be careful of loose rolling debris. Maintain Situational Awareness.	
ALL	LINE CONSTRUCTION	Conduct thorough briefing for all personnel (inside rear IRPG). Ensure LCES in place prior to engagement. Establish adequate Safety Zones. Use Downhill Line Checklist. Follow "Look Up, Look Down, Look All Around" procedures. Utilize Risk Management Process...reference the IRPG.	
ALL	HAZARD TREES	Identify and isolate the area to provide for the safety of others. Flag and make proper notifications. Do not fall trees out of your certification level.	
ALL	DRIVING HAZARDS	SLOW DOWN! Long travel times to the line, stay alert. Drive defensively! Expect the unexpected around every curve. Drive with headlights and seatbelts on. Narrow roads with limited passing room. Coordinate your movements on one-lane roads, follow traffic plans.	
ALL	AIRCRAFT OPERATIONS	Monitor air-to-ground frequency, they are your eyes in the sky. Use air-to-ground frequency to communicate with aircraft. Use clear, concise statements when directing aircraft. Only utilize aircraft to insert personnel on the line when necessary. Ensure the line is clear when working with aircraft.	
ALL	PERFORM TAIL GATE SAFETY	Everyone should be briefed on the conditions and circumstances regarding the fire and their assignments per the IRPG.	
ALL	DOZER SAFETY	Watch for rolling material. Monitor safe working distances. Avoid working below dozer. Utilize communication with the operator (radio or hand signals).	
5. Prepared By: Joe Buchmeier		Position/Title: SOF1	
ICS 215A		Date/Time: 8/26/2020 / 2030	
		Signature: 	



COVID-19 SAFETY BULLETIN



CAL FIRE Incident Management Team 6 Expectations

Do YOUR Part, Prevent Spread!

Any Public Area,

MASK UP!

When off the line,

MASK UP!

When moving around the incident,

MASK UP!

When wiping down apparatus/vehicles,

MASK UP!

When in Public Spaces,

MASK UP!

While washing your hands frequently!

MASK UP!

When meeting outside & in PUBLIC,

MASK UP!

When at the chow line and mess hall,

MASK UP!

WHAT IS OUR MESSAGE?

MASK UP, PLEASE!



CAL FIRE / INCIDENT MANAGEMENT TEAM 6

COVID-19 DAILY HEALTH CHECK SCREENING ALGORITHM



EACH WORKDAY WILL BEGIN WITH THE FOLLOWING:

Temperature recorded
Employee Screening Questionnaire

TEMPERATURE RECORDED

- Fever YES/NO? *Fever is considered > 100.4*
- #### EMPLOYEE SCREENING QUESTIONNAIRE
- Are you feeling ill/feverish?
 - Are you having chills?
 - Do you have new or worsening SOB?
 - Do you have a new or worsening cough?
 - Do you have a new or prolonged sore throat?

No Fever and No answered to all Employee Screening Questionnaire

Continue with Daily Operations

Yes Fever OR Yes answered to any of the Employee Screening Questionnaire

- Wash Hands, Don Mask and Isolate from other employ-ees. Maintain a distance of > 6 feet.
- Notify the Company Officer and/or Strike Team Leader.
- Notify Medical Unit Leader
- Refer employee to appropriate healthcare provider for evaluation and treatment.
- Disinfect "High-touch" surface areas.

REMINDERS TO ALL EMPLOYEES

- ◇ Self-Monitor yourself while you are on and off the line. If you experience any flu-like symptoms, COVID-19 symptoms, or any Respiratory illness symptoms contact your Company Officer and or Strike Team Leader.
- ◇ Maintain proper hand hygiene. Wash hands with soap and water for 20 seconds. Utilize hand sanitizer often. Do not shake hands, touch, or hug others.
- ◇ Cover coughs or sneezes (if not masked). Cloth Masks should be exchanged and or washed daily.
- ◇ Masks are required when out in the public on non-emergency business.
- ◇ Disinfect high-touch surfaces daily.
- ◇ Practice social distancing (> 6 feet) at meal times, dormitories, in-person meeting, or while in public.



CAL FIRE / Incident Management Team 6

COVID-19 Response Algorithm



Employee Response Action Plan

COVID-19 Positive Test or COVID-19 Positive Clinical Symptoms Presentation

- ***COVID 19 Symptoms: Cough, SOB, Fever or afebrile, Chills, Muscle Pain, Sore throat, Loss of taste/smell***
- Employee Informs Company Officer and Strike Team Leader of presumed/confirmed COVID-19 symptoms.
- Employee advised to seek evaluation by Medical Unit and CAL MAT or base camp medical unit.
- Crew initiates cleaning measures. Mask, safety glasses, gloves worn. (If needed, LOGS will assist)
- Medical Unit to notified IC, Liaison, Safety and Logistics ASAP. Medical Unit will notify COVID-19 Public Health Officer and determine need for testing and locations.



Incident Action Plan

- Company Officer / Strike Team Leader notified of personnel with COVID-19 positive test or symptom.
- Medical Unit evaluates individual(s) and need for care and evaluation.
- IC, Liaison, Safety and Logistics notification made to determine course of incident evaluation and response.
- Line Chief, Agency Administrator, and Region Office updated upon notification



Facilities Response

- Medical and Safety notified
- Incident Notification
- Disinfection plan initiated.
- Resource Status Evaluated



Medical Evaluation & Contact Tracing

- Personnel interviewed by Medical Unit . List of Positive contacts made in the last 5 days acquired. All Exposed are required to wear surgical mask, self monitor for Fever/Resp symptoms for up to 14 days (exposed personnel are subject to COVID-19 testing)
- Home Unit / Department utilized and retrospective tracking of Positive COVID-19 personnel inter-actions are identified within the last 5 days.
- Home Unit / Department updated by Company Officer / Strike Team Leader.
- Public Health Department is contacted and updated by IC or Designated Representative.
- Positive COVID-19 Employees w/symptoms will need to be evaluated by Health Department conducting testing, prior to returning to assignment.
- Positive COVID-19 Employees w/o symptoms may be required to be evaluated and resource status will be reviewed prior to returning to assignment.

ASSIGNMENT LIST (ICS 204 WF)

CONTROLLED UNCLASSIFIED
INFORMATION//BASIC

1. Incident Name: SCU LIGHTNING COMPLEX	2. Operational Period: Date From: 08/27/20 Date To: 08/28/20 Time From: 0700 Time To: 0700	3. Branch I	Division I
		Page 1 of 1	India

4. Operations Personnel: Operations Section Chief: S. Corn Branch Director: D. Esades Division/Group Supervisor: J. Beeson (T)	Night Ops: J. McGough Branch Safety: Air Attack:
---	---

5. Resources Assigned:		** Resources Below in Bold are 12 Hour **						
Resource Identifier	ALS	LWD	Leader	Personnel	Request #	Hours	Reporting Location	
STC SKU 9260C*			L. Turman	20	E-359	0700-0700	ICP	
DOZ PVT E-1			J. Worrell	2	E-1	0700-0700	ICP	
DOZ PVT E-212			T. Stevenson	2	E-212	0700-0700	ICP	
W/T PVT E-5			K. Merwin	2	E-5	0700-0700	ICP	
W/T PVT E-237			R. Webb	2	E-237	0700-0700	ICP	
<i>T/F WASHINGTON 426</i>			<i>D. Heim</i>	<i>20</i>	<i>E-426</i>	<i>0700-1400</i>		

6. Work Assignments:
Perform Tactical Patrol around structures.
Assess need for contingency lines.
Construct and/ or improve Fire line.

7. Special Instructions:
* STC SKU 9260C Identified for region response.
ROTTARY AIG COFTIS

8. Communications							
Name	Ch	Function	Rx Freq	Rx Tone	Tx Freq	Tx Tone	Notes
NIFC C3	2	COMMAND	170.4250N	131.8 (T3)	168.0750N	131.8 (T3)	MT OSO LINKED W/CMD 10, 11, 38, & 40
VTAC12	9	TACTICAL	154.4525N	156.7 (T6)	154.4525N	156.7 (T6)	
CDF T20	14	FIXED WING A/G	159.3750N	192.8 (T16)	159.3750N	192.8 (T16)	FIXED WING AIRCRAFT AIR TO GROUND
CALCORD	15	MEDICAL	156.0750N	156.7 (T6)	156.0750N	156.7 (T6)	
GUARD 27	16	EMERGENCY	168.6250N		168.6250N	110.9 (T1)	AIR GUARD

9. Prepared by: Name: Jamie Heald	RESL	Signature:
ICS 204	Date/Time: 8/26/2020 2200	Personnel Count: 28

ASSIGNMENT LIST (ICS 204 WF)

CONTROLLED UNCLASSIFIED
INFORMATION//BASIC

1. Incident Name: SCU LIGHTNING COMPLEX	2. Operational Period: Date From: 08/27/20 Date To: 08/28/20 Time From: 0700 Time To: 0700	3. Branch Division I J / K L
4. Operations Personnel:		Page 1 of 1

Operations Section Chief: S. Corn	Night Ops: J. McGough
Branch Director: D. Esades	Branch Safety:
Division/Group Supervisor: M. Barnes	Air Attack:

5. Resources Assigned:	** Resources Below in Bold are 12 Hour **							
Resource Identifier	ALS	LWD	Leader	Personnel	Request #	Hours	Reporting Location	
ENG3 CZU 1769				3	E-389	0700-0700	ICP	
ENG3 EBY 5665 → FSR GAU 1				3	E-380	0700-0700	ICP	
ENG3 TCU 4452 → 0			J. Tompkins	3	E-345	0700-0700	ICP	

6. Work Assignments:
 Perform Tactical Patrol around structures.
 Backhaul all trash.
 Identify suppression repair needs.

7. Special Instructions:

ROTTARY A/G CDFTIS

8. Communications

Name	Ch	Function	Rx Freq	Rx Tone	Tx Freq	Tx Tone	Notes
NIFC C3	2	COMMAND	170.4250N	131.8 (T3)	168.0750N	131.8 (T3)	MT OSO LINKED W/CMD 10, 11, 38, & 40
VTAC14	11	TACTICAL	159.4725N	156.7 (T6)	159.4725N	156.7 (T6)	OPS BRIEFING CHANNEL
CDF T20	14	FIXED WING A/G	159.3750N	192.8 (T16)	159.3750N	192.8 (T16)	FIXED WING AIRCRAFT AIR TO GROUND
CALCORD	15	MEDICAL	156.0750N	156.7 (T6)	156.0750N	156.7 (T6)	
GUARD 27	16	EMERGENCY	168.6250N		168.6250N	110.9 (T1)	AIR GUARD

9. Prepared by: Name: Jamie Heald RESL Signature:

ICS 204 Date/Time: 8/26/2020 2200 Personnel Count: 9

ASSIGNMENT LIST (ICS 204 WF)

CONTROLLED UNCLASSIFIED
INFORMATION//BASIC

1. Incident Name: SCU LIGHTNING COMPLEX	2. Operational Period: Date From: 08/27/20 Date To: 08/28/20 Time From: 0700 Time To: 0700	3. Branch Division I Q Page 1 of 1 Quebec
--	---	---

4. Operations Personnel:	
Operations Section Chief: S. Corn	Night Ops: J. McGough
Branch Director: D. Esades	Branch Safety:
Division/Group Supervisor: M. Morganstern (T)	Air Attack:

5. Resources Assigned:	** Resources Below in Bold are 12 Hour **							
Resource Identifier	ALS	LWD	Leader	Personnel	Request #	Hours	Reporting Location	
STC XSB 1522C	X		A. Wilding	21	E-208	0700-0700	ICP	
T/F OES 4810			C. Allen	20	E-425	0700-0700	ICP	
STH AEU 9270H			M. Abeloe	37	C-1	0700-0700	ICP	
CRW T-2 C-17			C. Hubbard	20	C-17	0700-1900	ICP	
STL HUU 9128L			T. Meyers	9	E-365	0700-0700	ICP	
DOZ BTU 2142			T. Adams	2	E-57	0700-0700	ICP	
DOZ CON 221			M. Kayhill	4	E-293	0700-0700	ICP	
DOZ NEU 2346			D. Miner	3	E-4	0700-0700	ICP	
DOZ SBC 22			J. Moniot	4	E-489	0700-0700	ICP	
DOZ PVT E-220			B. Dunn	2	E-220	0700-0700	ICP	
DOZ PVT E-393			C. Graham	2	E-393	0700-0700	ICP	
W/T PVT E-7			D. Escobar	2	E-7	0700-0700	ICP	
W/T PVT E-229			D. Wood	1	E-229	0700-1900	ICP	
W/T PVT E-230			D. Hughes	2	E-230	0700-0700	ICP	
W/T PVT E-250			R. Anderson	1	E-250	0700-1900	ICP	
FEMP CONNER	X		J. Conner	1	O-194	0700-0700	ICP	
FEMP ALBRECHT	X		K. Albrecht	1	O-203	0700-0700	ICP	
FALM C-371			T. Davant	1	O-371	0700-1900		

6. Work Assignments:
Construct and/ or improve Fire line.
Assess need for contingency lines.

7. Special Instructions:

ROTARY A/G CDF T15

8. Communications							
Name	Ch	Function	Rx Freq	Rx Tone	Tx Freq	Tx Tone	Notes
NIFC C11	4	COMMAND	170.6875N	131.8 (T3)	166.5750N	131.8 (T3)	MT ALLISON LINKED W/CMD 3, 10, 38 & 40
CDF T29	7	TACTICAL	151.3475N	192.8 (T16)	151.3475N	192.8 (T16)	
CDF T20	14	FIXED WING A/G	159.3750N	192.8 (T16)	159.3750N	192.8 (T16)	FIXED WING AIRCRAFT AIR TO GROUND
CALCORD	15	MEDICAL	156.0750N	156.7 (T6)	156.0750N	156.7 (T6)	
GUARD 27	16	EMERGENCY	168.6250N		168.6250N	110.9 (T1)	AIR GUARD

9. Prepared by: Name:	Jamie Heald	RESL	Signature:
ICS 204	Date/Time: 8/26/2020 2200	Personnel Count: 132	

ASSIGNMENT LIST (ICS 204 WF)

CONTROLLED UNCLASSIFIED
INFORMATION/BASIC

1. Incident Name:	2. Operational Period:	3. Branch	Division
SCU LIGHTNING COMPLEX	Date From: 08/27/20 Date To: 08/28/20 Time From: 0700 Time To: 0700	I	R
4. Operations Personnel:		Page 1 of 1	Romeo

Operations Section Chief: S. Corn	Night Ops: J. McGough
Branch Director: D. Esades	Branch Safety:
Division/Group Supervisor: J. Salazar	Air Attack:

5. Resources Assigned:		** Resources Below in Bold are 12 Hour **					
Resource Identifier	ALS	LWD	Leader	Personnel	Request #	Hours	Reporting Location
STC MEU 9110C			K. Taglio	18	E-41	0700-0700	ICP
T/F MONTANA 2	X		K. Parks	15	E-483	0700-0700	ICP
T/F IDAHO 1			J. Cook	17	E-374	0700-0700	ICP
STG LMU 9223G			C. Bonner	35	C-30	0700-0700	ICP
CRW T2 C-25			T. Jensen	20	C-25	0700-1900	ICP
STL TUU 9417L			N. Perricelli	9	E-502	0700-0700	ICP
DOZ XAL CO17			M. Adams	2	E-372	0700-0700	ICP
DOZ PVT E-214			B. Welch	2	E-214	0700-0700	ICP
W/T PVT E-227			M. Lemus	2	E-227	0700-0700	ICP
W/T PVT E-231			J. Thoene	2	E-231	0700-0700	ICP
FEMT DUGGAN			B. Duggan	1	O-199	0700-0700	ICP
FEMP NICOLINI			S. Nicolini	1	O-478	0700-0700	ICP

6. Work Assignments:
 Construct and/ or improve Fire line.
 Assess need for contingency lines.

7. Special Instructions:
ROTARY A/G COFT15

8. Communications							
Name	Ch	Function	Rx Freq	Rx Tone	Tx Freq	Tx Tone	Notes
NIFC C40	6	COMMAND	173.7500N	131.8 (T3)	163.8250N	131.8 (T3)	COPERNICUS PK LINKED W/CMD 3, 10, 11, & 38
CDF T30	8	TACTICAL	151.3925N	192.8 (T16)	151.3925N	192.8 (T16)	
CDF T20	14	FIXED WING A/G	159.3750N	192.8 (T16)	159.3750N	192.8 (T16)	FIXED WING AIRCRAFT AIR TO GROUND
CALCORD	15	MEDICAL	156.0750N	156.7 (T6)	156.0750N	156.7 (T6)	
GUARD 27	16	EMERGENCY	168.6250N		168.6250N	110.9 (T1)	AIR GUARD

9. Prepared by: Name:	Jamie Heald	RESL	Signature:
ICS 204	Date/Time: 8/26/2020	2200	Personnel Count: 124

ASSIGNMENT LIST (ICS 204 WF)

CONTROLLED UNCLASSIFIED
INFORMATION//BASIC

1. Incident Name: SCU LIGHTNING COMPLEX	2. Operational Period: Date From: 08/27/20 Date To: 08/28/20 Time From: 0700 Time To: 0700	3. Branch Division I V Page 1 of 1 Victor
--	---	--

4. Operations Personnel: Operations Section Chief: S. Corn		Night Ops: J. McGough	
Branch Director: D. Esades		Branch Safety:	
Division/Group Supervisor:		Air Attack:	

5. Resources Assigned:		** Resources Below in Bold are 12 Hour **					
Resource Identifier	ALS	LWD	Leader	Personnel	Request #	Hours	Reporting Location
ENG3 BEU 4666			D. Forbes	4	E-355	0700-0700	ICP

6. Work Assignments:
Construct and/ or improve Fire line.
Assess need for contingency lines.

7. Special Instructions:

ROTARY A/G CDF T15

8. Communications							
Name	Ch	Function	Rx Freq	Rx Tone	Tx Freq	Tx Tone	Notes
NIFC C11	4	COMMAND	170.6875N	131.8 (T3)	166.5750N	131.8 (T3)	MT ALLISON LINKED W/CMD 3, 10, 38 & 40
CDF T29	7	TACTICAL	151.3475N	192.8 (T16)	151.3475N	192.8 (T16)	
CDF T20	14	FIXED WING A/G	159.3750N	192.8 (T16)	159.3750N	192.8 (T16)	FIXED WING AIRCRAFT AIR TO GROUND
CALCORD	15	MEDICAL	156.0750N	156.7 (T6)	156.0750N	156.7 (T6)	
GUARD 27	16	EMERGENCY	168.6250N		168.6250N	110.9 (T1)	AIR GUARD

9. Prepared by: Name:	Jamie Heald	RESL	Signature:
ICS 204	Date/Time: 8/26/2020	2200	Personnel Count: 4

ASSIGNMENT LIST (ICS 204 WF)

CONTROLLED UNCLASSIFIED
INFORMATION//BASIC

1. Incident Name: SCU LIGHTNING COMPLEX	2. Operational Period: Date From: 08/27/20 Date To: 08/28/20 Time From: 0700 Time To: 0700	3. Branch Division II M Page 1 of 1 Mike
--	---	--

4. Operations Personnel:	
Operations Section Chief: S. Corn	Night Ops: J. McGough
Branch Director: S. Lanzas	Branch Safety:
Division/Group Supervisor: W. Barteau	Air Attack:

** Resources Below in Bold are 12 Hour **							
5. Resources Assigned:	ALS	LWD	Leader	Personnel	Request #	Hours	Reporting Location
STC SHU 9241C			J. Capen	17	E-358	0700-0700	Gilroy Camp
DOZ SCU 1644 → ○			S. Mcvay	4	E-350	0700-0700	Gilroy Camp
DOZ PVT E-216			S. Maynard	2	E-216	0700-0700	Gilroy Camp
DOZ PVT E-219 → ○			B. Hendrix	2	E-219	0700-0700	Gilroy Camp
DOZ PVT E-395 → ○			J. Willburn	2	E-395	0700-0700	Gilroy Camp
W/T PVT E-224			N. Kusalich	2	E-224	0700-0700	Gilroy Camp
W/T PVT E-240			M. Sanchez	1	E-240	0700-1900	Gilroy Camp
W/T PVT E-242			J. Zulu	2	E-242	0700-0700	Gilroy Camp
W/T PVT E-243			J. Mgary	2	E-243	0700-0700	Gilroy Camp

6. Work Assignments:
Construct and/ or improve Fire line.

7. Special Instructions:
All resources on Division M to report to Gilroy Camp for logistics support with the exception of STG Strike Teams.

ROTARY A/G CDF TIS

8. Communications							
Name	Ch	Function	Rx Freq	Rx Tone	Tx Freq	Tx Tone	Notes
NIFC C10	3	COMMAND	170.4125N	131.8 (T3)	165.9625N	131.8 (T3)	MT PACHECO LINKED W/CMD 3, 11, 38, & 40
CDF T31	7	TACTICAL	159.3825N	192.8 (T16)	159.3825N	192.8 (T16)	
CDF T20	14	FIXED WING A/G	159.3750N	192.8 (T16)	159.3750N	192.8 (T16)	FIXED WING AIRCRAFT AIR TO GROUND
CALCORD	15	MEDICAL	156.0750N	156.7 (T6)	156.0750N	156.7 (T6)	
GUARD 27	16	EMERGENCY	168.6250N		168.6250N	110.9 (T1)	AIR GUARD

9. Prepared by: Name: Jamie Heald RESL Signature:
ICS 204 Date/Time: 8/26/2020 2200 Personnel Count: 34

ASSIGNMENT LIST (ICS 204 WF)

CONTROLLED UNCLASSIFIED
INFORMATION//BASIC

1. Incident Name: SCU LIGHTNING COMPLEX	2. Operational Period: Date From: 08/27/20 Date To: 08/28/20 Time From: 0700 Time To: 0700	3. Branch Division II N Page 1 of 1 November
--	---	--

4. Operations Personnel:	
Operations Section Chief: S. Corn	Night Ops: J. McGough
Branch Director: S. Lanzas	Branch Safety:
Division/Group Supervisor: R. Engler	Air Attack:

5. Resources Assigned:	** Resources Below in Bold are 12 Hour **						
Resource Identifier	ALS	LWD	Leader	Personnel	Request #	Hours	Reporting Location
STC SCU 9160C			B. Leitzke	22	E-169	0700-0700	Gilroy Camp
STC BDU 9351C			A. Ramirez	19	E-444	0700-0700	Gilroy Camp
STF XAL 2006F	X		T. Pappas	18	E-269	0700-0700	Gilroy Camp
ENG6 XAL 5681			S. Huerta	3	E-379	0700-0700	Gilroy Camp
CRW T2 C-12			C. Pacheco	20	C-12	0700-1900	Gilroy Camp
DOZ NEU 2341			M. Bellows	4	E-401	0700-0700	Gilroy Camp
DOZ PVT E-221			T. Funes	2	E-221	0700-0700	Gilroy Camp
MAS PVT E-456 → ○			S. Evans	1	E-456	0700-1900	Gilroy Camp
MAS PVT E-457 → ○			R. Borst	1	E-457	0700-1900	Gilroy Camp
W/T XAL 6			G. Dunbar	2	E-335	0700-0700	Gilroy Camp
W/T PVT E-232			N. Aguilar	2	E-232	0700-0700	Gilroy Camp
W/T PVT E-233			R. Hurl	2	E-233	0700-0700	Gilroy Camp
W/T PVT E-239			P. Yokoyama	1	E-239	0700-1900	Gilroy Camp

6. Work Assignments:
Construct and/ or improve Fire line.

7. Special Instructions:
Some areas of the division may be better served by NIFC C38 or NIFC C10
All resources on Division N to report to Gilroy Camp for logistics support with the exception of STG Strike Teams.

ROTARY AIG CDF-TIS


8. Communications							
Name	Ch	Function	Rx Freq	Rx Tone	Tx Freq	Tx Tone	Notes
NIFC C40	6	COMMAND	173.7500N	131.8 (T3)	163.8250N	131.8 (T3)	COPERNICUS PK LINKED W/CMD 3, 10, 11, & 38
VTAC11	8	TACTICAL	151.1375N	156.7 (T6)	151.1375N	156.7 (T6)	
CDF T20	14	FIXED WING A/G	159.3750N	192.8 (T16)	159.3750N	192.8 (T16)	FIXED WING AIRCRAFT AIR TO GROUND
CALCORD	15	MEDICAL	156.0750N	156.7 (T6)	156.0750N	156.7 (T6)	
GUARD 27	16	EMERGENCY	168.6250N		168.6250N	110.9 (T1)	AIR GUARD

9. Prepared by: Name: Jamie Heald RESL Signature:

ICS 204 Date/Time: 8/26/2020 2200 Personnel Count: 97

ASSIGNMENT LIST (ICS 204 WF)

CONTROLLED UNCLASSIFIED INFORMATION/BASIC

1. Incident Name: SCU LIGHTNING COMPLEX		2. Operational Period: Date From: 08/27/20 Date To: 08/28/20 Time From: 0700 Time To: 0700				3. Branch II		Division O	
4. Operations Personnel: Operations Section Chief: S. Corn Branch Director: S. Lanzas Division/Group Supervisor: M. Milojevich / Z. Main (T)						Night Ops: J. McGough Branch Safety: Air Attack:			
5. Resources Assigned:		** Resources Below in Bold are 12 Hour **							
Resource Identifier	ALS	LWD	Leader	Personnel	Request #	Hours	Reporting Location		
STA LFD 1002A			M. Castillo	23	E-410	0700-0700	Gilroy Camp		
STA OES 5806A			R. Roberts	20	E-282	0700-0700	Gilroy Camp		
STA XLG 1361A			K. Milikan	22	E-409	0700-0700	Gilroy Camp		
STC SCU 9161C			B. Leitzke	17	E-170	0700-0700	Gilroy Camp		
T/F MONTANA 1			J. Veale	16	E-482	0700-0700	Gilroy Camp		
T/F XSC 2323	X		B. Stellings	19	E-348	0700-0700	Gilroy Camp		
STH BTU 9213H			J.Wells	31	C-3	0700-0700	Gilroy Camp		
STH MMU 9425H			J. Beery	25	C-102	0700-0700	Gilroy Camp		
STH SHU 9242H			J. Smutz	26	C-87	0700-0700	Gilroy Camp		
STG BTU 9212G			K. Finkeneller	33	C-89	0700-0700	Gilroy Camp		
CRW T2 C-23			K. Morse	20	C-23	0700-1900	Gilroy Camp		
CRW T2 C-26			M. Spence	20	C-26	0700-1900	Gilroy Camp		
DOZ LNU 1442			N. Derickson	3	E-3	0700-0700	Gilroy Camp		
DOZ MRN 1540			J. Terstegge	4	E-14	0700-0700	Gilroy Camp		
DOZ SHU 2440			C. Rauch	1	E-367	0700-0700	Gilroy Camp		
DOZ SHU 2444			K. Ensley	3	E-368	0700-0700	Gilroy Camp		
DOZ PVT E-213			A. Daniels	2	E-213	0700-0700	Gilroy Camp		
DOZ PVT E-223			L. Gill	2	E-223	0700-0700	Gilroy Camp		
6. Work Assignments: Construct and/ or improve Fire line. Assess need for contingency lines. Conduct and hold firing operations									
7. Special Instructions: Some areas of the division may be better served by NIFC C38 All resources on Division O to report to Gilroy Camp for logistics support with the exception of STG Strike Teams. ROTARY A/G COPTIS									
8. Communications									
Name	Ch	Function	Rx Freq	Rx Tone	Tx Freq	Tx Tone	Notes		
NIFC C40	6	COMMAND	173.7500N	131.8 (T3)	163.8250N	131.8 (T3)	COPERNICUS PK LINKED W/CMD 3, 10, 11, & 38		
VTAC13	9	TACTICAL	158.7375N	156.7 (T6)	158.7375N	156.7 (T6)			
CDF T20	14	FIXED WING A/G	159.3750N	192.8 (T16)	159.3750N	192.8 (T16)	FIXED WING AIRCRAFT AIR TO GROUND		
CALCORD	15	MEDICAL	156.0750N	156.7 (T6)	156.0750N	156.7 (T6)			
GUARD 27	16	EMERGENCY	168.6250N		168.6250N	110.9 (T1)	AIR GUARD		
9. Prepared by: Name: Jamie Heald			RESL			Signature: 			
ICS 204			Date/Time: 8/26/2020 2200			Personnel Count: 287			

NIMS IAP

CONTROLLED UNCLASSIFIED INFORMATION/BASIC

ASSIGNMENT LIST (ICS 204 WF)

CONTROLLED UNCLASSIFIED
INFORMATION//BASIC

1. Incident Name: SCU LIGHTNING COMPLEX	2. Operational Period: Date From: 08/27/20 Date To: 08/28/20 Time From: 0700 Time To: 0700	3. Branch Division II O Page 2 of 2 Oscar
--	---	--

4. Operations Personnel:	
Operations Section Chief: S. Corn	Night Ops: J. McGough
Branch Director: S. Lanzas	Branch Safety:
Division/Group Supervisor: M. Milojevich / Z. Main (T)	Air Attack:

5. Resources Assigned:		** Resources Below in Bold are 12 Hour **					
Resource Identifier	ALS	LWD	Leader	Personnel	Request #	Hours	Reporting Location
GRD PVT E-459			K. Pereira	2	E-459	0700-1900	Gilroy Camp
W/T PVT E-235			J. Epperson	2	E-235	0700-0700	Gilroy Camp
W/T PVT E-245			D. Harms	2	E-245	0700-0700	Gilroy Camp
W/T PVT E-246			K. Koontz	2	E-246	0700-0700	Gilroy Camp
W/T PVT E-252			B. Trocha	2	E-252	0700-0700	Gilroy Camp
HEQB BRIDGER			J. Bridger	1	O-483	0700-0700	Gilroy Camp
FEMP KNABE	X		T. Knabe	1	O-192	0700-0700	Gilroy Camp
FEMP FOSTER			J. Foster	1	O-522	0700-0700	Gilroy Camp
FEMT QUADT			J. Quadt	1	O-521	0700-1900	Gilroy Camp
<i>T/F PVT THUNDERBOLTS</i>			<i>S. Gonzales</i>	<i>15</i>	<i>E-263</i>	<i>0700-1900</i>	
<i>ENG 3 TCU 4552</i>			<i>C. Schemper</i>	<i>3</i>	<i>E-345</i>	<i>0700-0700</i>	
<i>DOZ SCU 1644</i>			<i>S. McVay</i>	<i>4</i>	<i>E-350</i>	<i>0700-0700</i>	
<i>DOZ PVT E-219</i>			<i>B. Hendrix</i>	<i>2</i>	<i>E-219</i>	<i>0700-0700</i>	
<i>DOZ PVT E-395</i>			<i>J. Willburn</i>	<i>2</i>	<i>E-395</i>	<i>0700-0700</i>	
<i>MAS PVT E-456</i>			<i>S. Evans</i>	<i>1</i>	<i>E-456</i>	<i>0700-1900</i>	
<i>MAS PVT E-457</i>			<i>R. Borst</i>	<i>1</i>	<i>E-457</i>	<i>0700-1900</i>	
<i>W/T SCC 68</i>			<i>Myers</i>	<i>2</i>	<i>E-128</i>	<i>0700-0700</i>	

6. Work Assignments:
 Construct and/ or improve Fire line.
 Assess need for contingency lines.
 Conduct and hold firing operations

7. Special Instructions:
 Some areas of the division may be better served by NIFC C38
 All resources on Division O to report to Gilroy Camp for logistics support with the exception of STG Strike Teams.
ROTARY A/G CDF T15

8. Communications							
Name	Ch	Function	Rx Freq	Rx Tone	Tx Freq	Tx Tone	Notes
NIFC C40	6	COMMAND	173.7500N	131.8 (T3)	163.8250N	131.8 (T3)	COPERNICUS PK LINKED W/CMD 3, 10, 11, & 38
VTAC13	9	TACTICAL	158.7375N	156.7 (T6)	158.7375N	156.7 (T6)	
CDF T20	14	FIXED WING A/G	159.3750N	192.8 (T16)	159.3750N	192.8 (T16)	FIXED WING AIRCRAFT AIR TO GROUND
CALCORD	15	MEDICAL	156.0750N	156.7 (T6)	156.0750N	156.7 (T6)	
GUARD 27	16	EMERGENCY	168.6250N		168.6250N	110.9 (T1)	AIR GUARD

9. Prepared by: Name: Jamie Heald RESL Signature:
ICS 204 Date/Time: 8/26/2020 2200 Personnel Count: 14

CONTROLLED UNCLASSIFIED INFORMATION//BASIC

ASSIGNMENT LIST (ICS 204 WF)

CONTROLLED UNCLASSIFIED
INFORMATION//BASIC

1. Incident Name: SCU LIGHTNING COMPLEX	2. Operational Period: Date From: 08/27/20 Date To: 08/28/20 Time From: 0700 Time To: 0700	3. Branch II	Division T
4. Operations Personnel:		Page 1 of 1	Tango

Operations Section Chief: S. Corn	Night Ops: J. McGough
Branch Director: S. Lanzas	Branch Safety:
Division/Group Supervisor: A. Hernandez	Air Attack:

5. Resources Assigned:		** Resources Below in Bold are 12 Hour **						
Resource Identifier	ALS	LWD	Leader	Personnel	Request #	Hours	Reporting Location	
STC AEU 9271C			B. Pooley	17	E-13	0700-0700	Gilroy Camp	
STC XTB 4228C	X		T. Vallenzuela	21	E-195	0700-0700	Gilroy Camp	
DOZ LNU 1445			C. Boschi	3	E-453	0700-0700	Gilroy Camp	
DOZ LNU 1449			B. Pots	3	E-366	0700-0700	Gilroy Camp	
DOZ PVT E-215			L. Arias	3	E-215	0700-0700	Gilroy Camp	
DOZ PVT E-222			S. Mahood	2	E-222	0700-0700	Gilroy Camp	
W/T PVT E-244			C. Skinner	1	E-244	0700-1900	Gilroy Camp	
W/T PVT E-251			S. Fourby	1	E-251	0700-1900	Gilroy Camp	
REMS MODULE 53	X		R. Smith	4	O-377	0700-1900	Gilroy Camp	
FEMP KENNEDY	X		D. Kennedy	1	O-121	0700-0700	Gilroy Camp	
FEMP GARRISON (T)	X		M. Garrison	1	O-407	0700-0700	Gilroy Camp	

6. Work Assignments:
Construct and/ or improve Fire line.
Assess need for contingency lines.

7. Special Instructions:
Some areas of the division may be better served by NIFC C38
All resources on Division T to report to Gilroy Camp for logistics support with the exception of STG Strike Teams.
ROTARY A/G CAFTIS

8. Communications							
Name	Ch	Function	Rx Freq	Rx Tone	Tx Freq	Tx Tone	Notes
NIFC C40	6	COMMAND	173.7500N	131.8 (T3)	163.8250N	131.8 (T3)	COPERNICUS PK LINKED W/CMD 3, 10, 11, & 38
VFIRE 23	10	TACTICAL	154.2950N	156.7 (T6)	154.2950N	156.7 (T6)	
CDF T20	14	FIXED WING A/G	159.3750N	192.8 (T16)	159.3750N	192.8 (T16)	FIXED WING AIRCRAFT AIR TO GROUND
CALCORD	15	MEDICAL	156.0750N	156.7 (T6)	156.0750N	156.7 (T6)	
GUARD 27	16	EMERGENCY	168.6250N		168.6250N	110.9 (T1)	AIR GUARD

9. Prepared by: Name: Jamie Heald	RESL	Signature:	
ICS 204	Date/Time: 8/26/2020 2200	Personnel Count: 57	

ASSIGNMENT LIST (ICS 204 WF)

CONTROLLED UNCLASSIFIED
INFORMATION//BASIC

1. Incident Name: SCU LIGHTNING COMPLEX	2. Operational Period: Date From: 08/27/20 Date To: 08/28/20 Time From: 0700 Time To: 0700	3. Branch Group Suppression 1 Repair
4. Operations Personnel:		Page 1 of 1

Operations Section Chief: S. Corn	Night Ops: J. McGough
Branch Director: S. Ward (12) / E. Orre (12)	Branch Safety:
Division/Group Supervisor: S. Forman (12)	Air Attack:

5. Resources Assigned:		** Resources Below in Bold are 12 Hour **					
Resource Identifier	ALS	LWD	Leader	Personnel	Request #	Hours	Reporting Location
T/F PVT THUNDER BOLT → 0			S. Gonzales	16	E-363	0700-1900	ICP
DOZ BEU 4643			D. Heinson	1	E-512	0700-1900	ICP
DOZ PVT E-392 → DMOB			B. Shannon	1	E-392	0700-1900	ICP
DOZ PVT E-394			T. Waterman	1	E-394	0700-1900	ICP
DOZ PVT E-396			S. Mahood	1	E-396	0700-1900	ICP
DOZ PVT E-400			G. Grewer	1	E-400	0700-1900	ICP
DOZ PVT E-481			L. Owens	1	E-481	0700-1900	ICP
CHIP PVT E-500			C. Wallace	2	E-500	0700-1900	ICP
GRD PVT E-423			E. Butts	1	E-423	0700-1900	ICP
EXC PVT E-458			A. Fratarcangeli	1	E-458	0700-1900	ICP
EXC PVT E-479			J. Graham	1	E-479	0700-1900	ICP
W/T PVT E-241 → FSR GROUP 2			A. Harris	1	E-241	0700-1900	ICP
W/T SCC 68 → 0			M. Gil	1	E-128	0700-1900	ICP
W/T PVT E-6			B. Indiher	1	E-6	0700-1900	ICP
W/T PVT E-236			R. Santana	1	E-236	0700-1900	ICP
ENG 3 EBY 5665				3	E-380	0700-1900	
EXC PVT E-501			R. Dickey	1	E-501	0700-1900	
W/T PVT E-226			L. Burton	2	E-226	0700-1900	

6. Work Assignments:							
Assess fire suppression needs and implement plan where directed.							
W/T PVT E-228			T. Kelly	2	E-228	0700-1900	
W/T PVT E-234			J. Bendall	2	E-234	0700-1900	
HEQB 0-486 Hyman			M. Hyman	1	0-486	0700-0700	

7. Special Instructions:							
All resources in suppression repair are twelve hour resources.							
HEQBCT 0-485			I. Mather	1	0-485	0700-0700	
HEQBCT 0-421			J. Graham	1	0-421	0700-0700	
ROTARY A/G CDF T15							

8. Communications							
Name	Ch	Function	Rx Freq	Rx Tone	Tx Freq	Tx Tone	Notes
CDF C1	1	COMMAND	151.3550N	103.5 (T8)	159.3000N	110.9 (T1)	MT DIABLO
VFIRE 24	12	TACTICAL	154.2725N	156.7 (T6)	154.2725N	156.7 (T6)	
CDF T20	14	FIXED WING A/G	159.3750N	192.8 (T16)	159.3750N	192.8 (T16)	FIXED WING AIRCRAFT AIR TO GROUND
CALCORD	15	MEDICAL	156.0750N	156.7 (T6)	156.0750N	156.7 (T6)	
GUARD 27	16	EMERGENCY	168.6250N		168.6250N	110.9 (T1)	AIR GUARD

9. Prepared by: Name: Jamie Heald	RESL	Signature:	
ICS 204	Date/Time: 8/26/2020 2200	Personnel Count: 31	

CONTROLLED UNCLASSIFIED INFORMATION//BASIC

ASSIGNMENT LIST (ICS 204 WF)

CONTROLLED UNCLASSIFIED
INFORMATION//BASIC

1. Incident Name: SCU LIGHTNING COMPLEX	2. Operational Period: Date From: 08/27/20 Date To: 08/28/20 Time From: 0700 Time To: 0700	3. Branch Group Suppression 2 Repair
4. Operations Personnel:		Page 1 of 1

Operations Section Chief: S. Corn	Night Ops: J. McGough
Branch Director: S. Ward (12) / E. Orre (12)	Branch Safety:
Division/Group Supervisor: A. Anastasi (12)	Air Attack:

5. Resources Assigned:	** Resources Below in Bold are 12 Hour **							
Resource Identifier	ALS	LWD	Leader	Personnel	Request #	Hours	Reporting Location	
DOZ PVT E-210			A. Bushey	1	E-210	0700-1900	ICP	
DOZ PVT E-211			J. Ontano	1	E-211	0700-1900	ICP	
DOZ PVT E-217			R. Dudbah	1	E-217	0700-1900	ICP	
DOZ PVT E-218			J. Wyatt	1	E-218	0700-1900	ICP	
CHIP PVT E-480			J. Powell	3	E-480	0700-1900	ICP	
CHIP PVT E-503			T. Wright	2	E-503	0700-1900	ICP	
GRD PVT E-462			R. Mustin	1	E-462	0700-1900	ICP	
EXC PVT E-455			S. Forde	1	E-455	0700-1900	ICP	
EXC PVT E-454			S. Clark	1	E-454	0700-1900	ICP	
W/T PVT E-234 <i>→ FSR Group 1</i>			J. Bendall	1	E-234	0700-1900	ICP	
W/T PVT E-253			M. Beaver	1	E-253	0700-1900	ICP	
W/T PVT E-248			V. Reali	1	E-248	0700-1900	ICP	
W/T PVT E-228 <i>→ FSR Group 1</i>			T. Kelly	1	E-228	0700-1900	ICP	
W/T PVT E-226 <i>→ FSR Group 1</i>			L. Burton	1	E-226	0700-1900	ICP	
FALM O-370			B. Toth	1	O-370	0700-1900	ICP	
<i>W/T PVT E-241</i>			<i>A. Harris</i>	<i>1</i>	<i>E-241</i>	<i>0700-1900</i>		

6. Work Assignments:
Assess fire suppression needs and follow plan where directed.

7. Special Instructions:
All resources assigned to suppression repair are twelve hours resources.

ROTARY A/G CDFT15

8. Communications							
Name	Ch	Function	Rx Freq	Rx Tone	Tx Freq	Tx Tone	Notes
CDF C1	1	COMMAND	151.3550N	103.5 (T8)	159.3000N	110.9 (T1)	MT DIABLO
VFIRE 24	12	TACTICAL	154.2725N	156.7 (T6)	154.2725N	156.7 (T6)	
CDF T20	14	FIXED WING A/G	159.3750N	192.8 (T16)	159.3750N	192.8 (T16)	FIXED WING AIRCRAFT AIR TO GROUND
CALCORD	15	MEDICAL	156.0750N	156.7 (T6)	156.0750N	156.7 (T6)	
GUARD 27	16	EMERGENCY	168.6250N		168.6250N	110.9 (T1)	AIR GUARD

9. Prepared by: Name: Jamie Heald	RESL	Signature:
ICS 204	Date/Time: 8/26/2020 2200	Personnel Count: 18

AIR OPERATIONS SUMMARY ICS-220													
Incident Name / Number		Sunrise	Startup	Cutoff	Sunset	Time Prepared		Date Prepared		Prepared By			
SCU LIGHTNING COMPLEX / CA-SCU-005740		6:34	7:04	19:12	19:42	1400 Shutdown 20:12		Wednesday, August 26, 2020 Operational Period - Date Thursday August 27, 2020		B. Kremensky <i>BK</i> Operational Period - Time 0700-2100			
General Remarks, Safety Notes, Hazards, Air Operations Special Equipment, etc.													
TRACK ALL DIPSITE LOCATIONS / NUMBER OF DIPS / GALLONS TAKEN. TRACK ALL DROP LOCATIONS / NUMBER OF DROPS / GALLONS DROPPED ALL GPS DATA TO BE COLLECTED IN DEGREES, MINUTES, DECIMAL MINUTES FORMAT. AVOID Aerial Application of Retardant / Foam / Agent within 300' of Waterways, Bodies of Water, etc. If Retardant / Foam / Agent is Dropped Within These Areas Immediately Notify the AOB and Provide the Following Information: Lat / Long, Estimated Number of Gallons and a Map Detailing The Area. Sunol MRB Latitude 37 34.99 Longitude 121 41.614 Red MRB Latitude 37 20.09 Longitude 121 49.27													
Helibase Information			Name			TFR Information			Rescue Ship Information				
Name Meadowlark			Latitude 37 39.679			Request # A-138			Day/Holst Night/Holst				
Longitude 121 41.614			Name			Altitude: 7,000 MSL			Name G841				
Longitude			Latitude			Centerpoint: 37 37.56N Lat			Phone (530)708-2718				
(use page 2 if needed)			Longitude			NOTAMS: 0/6721			Make/Model UH-60				
						Frequency 133.0250			Location Meadowlark				
						http://tfr.faa.gov/tfrZ/list.html			Request Procedure for These Aircraft: Incident Communications				
Frequencies		TX	Tone	RX	Tone	AM / FM	Position	Name	Phone	Trainee	Phone		
COMMAND		163.8250N	131.8000	173.7500N	131.8000	FM	AOBD	B. Kremensky					
AIR/GROUND FIXED WING		159.3750	192.8000	159.3750	192.8000	FM	ASGS	P. Matser					
AIR/GROUND ROTOR WING		159.2700	192.8000	159.2700	192.8000	FM	HEBM	R. Johnson					
AIR/AIR ROTARY WING		133.0250		133.0250		AM							
Helico Briefing													
AIR TACTICS		169.2875	110.9	169.2875	110.9	FM							
Air Attack Briefing		135.0250		135.0250		AM							
TOLC		123.0250		123.0250		AM		L. Kaifsbeek					
DECK		163.1000		163.1000		FM		B. Renner					
CALCORD - MEDICAL		156.0750	156.7 (6)	156.0750	156.7 (6)	FM	ATGS						
AIRGUARD - Emergency Only		168.6250	110.9 (1)	168.6250		FM							
HELICOPTERS (Use page 2 if Needed)													
FAA #	Type	Make/Model	Helibase	Avail	Start	Remarks	FAA #	Type	Make/Model	Helibase	Avail	Start	Remarks
5PJ	I	A-60	Meadowlark	0800	0830	Bucket							
5HT	I	S-64	Meadowlark	0800	0830	Tank							
5AJ	I	CH-47	Meadowlark	0800	0830	Tank							
C-902	II	UH-1H	Meadowlark	0800	0830	Bucket							
4TV	III	A-Star	Meadowlark	0800	0830	Helico/Recon/Bucket							
Eagle 7	III	A-Star	Meadowlark	0800	0830	Helico/Recon/Bucket							
3SH	III	206L	Meadowlark	0800	0830	Helico/Recon/Bucket							
1AC	III	407	Meadowlark	0800	0830	Helico/Recon/Bucket							

MEDICAL PLAN (ICS 206)

1. Incident Name: SCU LIGHTNING COMPLEX		2. Operational Period: Date From: 8/27/20 Date To: 8/28/20 Time From: 0700 Time To: 0700					
3. Medical Aid Stations:							
Name	Location	Contact Number/Freq	Paramedics				
Cal Mat - California Medical Assistance Team	ICP	Lightning Communication	Yes				
MERT	ICP	(530) 417-4560	<input type="checkbox"/> No				
Gilroy Camp	Christmas Hill Park	(530) 417-4560	Yes				
4. Transportation (Indicate air or ground):							
Ambulance Service	Location	Contact Number	Level of Service				
M801, M58 (Ground)	Calaveras Zone	Lightning Communication	ALS				
M7191, M7702, M815 (Ground)	Canyon Zone - Stanislaus County	Lightning Communication	ALS				
M50, M57 (Ground)	Christmas Hill Park	Lightning Communication	ALS				
Stanford Life Flight (Air)	Stanford - Santa Clara County	Lightning Communication	ALS				
CAL FIRE Copter 106 (Day Hoist)	Incident Helibase	Lightning Communication	BLS				
Guard 841 (24 hoist)	Incident Helibase	Lightning Communication	BLS				
5. Hospitals:							
Hospital Name	Address,	Contact Number(s)/ Frequency	Travel Time		Trauma Center	Burn Center	Helipad
	Lat & Long Helipad		Air	Ground			
St. Louise Regional Medical Center	9400 No Name Uno, Gilroy N37°02'08.24, W-121°34'16.15	(408) 848-8680	31	1:35	EDAT	<input type="checkbox"/>	<input checked="" type="checkbox"/>
Santa Clara Valley Medical	751 S. Bascom Ave. San Jose N37°18'50.30, W-121°56'03.28	(408) 885-6912	22	1:18	Level 1	<input checked="" type="checkbox"/>	<input checked="" type="checkbox"/>
Eden Medical Center	20103 Lake Chabot Rd Castro N37°41'56.28, W-122°05'21.36	(510) 727-3015	22	1:18	Level 2	<input type="checkbox"/>	<input checked="" type="checkbox"/>
Stanford Health Care - ValleyCare Medical Center	5555 W. Las Positas Blvd., Pleasanton N37°41'39.93, W-121°52'51.22	(925)416-6525	18	1:06	Level 1	<input type="checkbox"/>	<input checked="" type="checkbox"/>
6. Special Medical Emergency Procedures							
<p>Line Emergency Crew Supervisor will contact Division Supervisor with patient complaint/condition and location.</p> <p>- Division Group Supervisor Contacts:</p> <ol style="list-style-type: none"> 1. Closest EMS resource 2. Communications Unit <p>- Communications Unit Contacts:</p> <ol style="list-style-type: none"> 1. Ground or Air ambulance as requested. 2. Operations 3. Safety 4. Medical Unit <p>- Division Supervisor or designee will serve as point of contact and run medical emergency on assigned channel.</p> <ol style="list-style-type: none"> 1. A pre-assigned tactical frequency (i.e. CALCORD) should be used for IWL and only for duration of the emergency. <p>- Communications Unit will clear the Command channel for emergency traffic as needed for duration of the need.</p>				<p>Injury Reporting Procedures</p> <p>Nature of Injury: _____</p> <p>Location of Patient: _____</p> <p>Point of Contact: _____</p> <p>Transportation Requested by: Air ___ Ground ___</p> <p>Point of Pick-Up: _____</p> <p>Lat: _____ Long: _____</p> <p>Patient Unit ID: _____</p> <p>Is an EMT with Patient: Yes ___ No ___</p> <p>Age: _____ Sex: Male ___ Female ___</p> <p>All Emergencies - Secure the area and identified witnesses for later investigation. Keep accurate log of events.</p>			
<input type="checkbox"/> Check box if aviation assets are utilized for rescue. If assets are used, coordinate with Air Operations.							
7. Prepared by (Medical Unit Leader):				Signature:			
J. Segura R. Beeson (T)							
8. Approved by (Safety Officer):				Signature:			
S. Buchmeir J. Novak (T)							
ICS 206		NIMS IAP		Date/Time:		8/26/2020 17:30	

ICS 205 - INCIDENT RADIO COMMUNICATIONS PLAN

1. Incident Name: SCU LIGHTNING COMPLEX BRANCH I		2. Date/Time Prepared Date: 08/26/2020 Time: 1930		3. Operational Period: Date From: 08/27/20 Time From: 0700		Date To: 08/28/20 Time To: 0700	
---	--	--	--	---	--	------------------------------------	--

4. Communications								
Ch#	Function	Name	Assigned To	Rx Freq	Rx Tone	Tx Freq	Tx Tone	Notes
1	COMMAND	CDF C1		151.3550N	103.5 (T8)	159.3000N	110.9 (T1)	MT DIABLO
2	COMMAND	NIFC C3	ALL BRANCHES	170.4250N	131.8 (T3)	168.0750N	131.8 (T3)	MT OSO LINKED W/CMD 10, 11, 38, & 40
3	COMMAND	NIFC C10	ALL BRANCHES	170.4125N	131.8 (T3)	165.9625N	131.8 (T3)	MT PACHECO LINKED W/CMD 3, 11, 38, & 40
4	COMMAND	NIFC C11	ALL BRANCHES	170.6875N	131.8 (T3)	166.5750N	131.8 (T3)	MT ALLISON LINKED W/CMD 3, 10, 38 & 40
5	COMMAND	NIFC C38	ALL BRANCHES	172.6750N	131.8 (T3)	163.0375N	131.8 (T3)	LOMA PRIETA PEAK LINKED W/CMD 3, 10, 11, & 40
6	COMMAND	NIFC C40	ALL BRANCHES	173.7500N	131.8 (T3)	163.8250N	131.8 (T3)	COPERNICUS PK LINKED W/CMD 3, 10, 11, & 38
7	TACTICAL	CDF T29	DIV V & DIV Q	151.3475N	192.8 (T16)	151.3475N	192.8 (T16)	
8	TACTICAL	CDF T30	DIV R	151.3925N	192.8 (T16)	151.3925N	192.8 (T16)	
9	TACTICAL	VTAC12	DIV I	154.4525N	156.7 (T6)	154.4525N	156.7 (T6)	
10								
11	TACTICAL	VTAC14	DIV J / K / L	159.4725N	156.7 (T6)	159.4725N	156.7 (T6)	OPS BRIEFING CHANNEL
12	TACTICAL	VFIRE 24	SUPPRESSION REPAIR	154.2725N	156.7 (T6)	154.2725N	156.7 (T6)	
13	ROTARY A/G	CDF T15	ALL BRANCHES	159.2700N	192.8 (T16)	159.2700N	192.8 (T16)	ROTARY AIRCRAFT AIR TO GROUND
14	FIXED WING A/G	CDF T20	ALL BRANCHES	159.3750N	192.8 (T16)	159.3750N	192.8 (T16)	FIXED WING AIRCRAFT AIR TO GROUND
15	MEDICAL	CALCORD	ALL BRANCHES	156.0750N	156.7 (T6)	156.0750N	156.7 (T6)	
16	EMERGENCY	GUARD 27	ALL BRANCHES	168.6250N		168.6250N	110.9 (T1)	AIR GUARD
17								
18								
19								
20	EMERGENCY	GUARD 27	ALL BRANCHES	168.6250N		168.6250N	110.9 (T1)	AIR GUARD

5. Special Instructions
 TO CONFIRM YOU HAVE THE MOST CURRENT CLONE, ENSURE YOUR DISPLAY OF CHANNEL 16 OR 20 MATCHES CHANNEL 16 OR 20 OF THE 205 - HEIGHT AND POWER ARE KEY WHEN USING RADIOS; BE AT A HIGH POINT, USE A MOBILE IF POSSIBLE, AND USE RADIO RELAYS WHEN NEEDED

6. Prepared by (Communications Unit Leader): Name: John Brooks, IMT6		Signature: 	
ICS 205 - CONTROLLED UNCLASSIFIED INFORMATION/BASIC		Date/Time: 08/26/20 1930	

ICS 205 - INCIDENT RADIO COMMUNICATIONS PLAN

1. Incident Name: SCU LIGHTNING COMPLEX BRANCH II	2. Date/Time Prepared Date: 08/26/2020 Time: 1930	3. Operational Period: Date To: 08/28/20 Time To: 0700
--	--	---

4. Communications									
Ch#	Function	Name	Assigned To	Rx Freq	Rx Tone	Tx Freq	Tx Tone	Notes	
1									
2	COMMAND	NIFC C3	ALL BRANCHES	170.4250N	131.8 (T3)	168.0750N	131.8 (T3)	MT OSO LINKED W/CMD 10, 11, 38, & 40	
3	COMMAND	NIFC C10	ALL BRANCHES	170.4125N	131.8 (T3)	165.9625N	131.8 (T3)	MT PACHECO LINKED W/CMD 3, 11, 38, & 40	
4	COMMAND	NIFC C11	ALL BRANCHES	170.6875N	131.8 (T3)	166.5750N	131.8 (T3)	MT ALLISON LINKED W/CMD 3, 10, 38 & 40	
5	COMMAND	NIFC C38	ALL BRANCHES	172.6750N	131.8 (T3)	163.0375N	131.8 (T3)	LOMA PRIETA PEAK LINKED W/CMD 3, 10, 11, & 40	
6	COMMAND	NIFC C40	ALL BRANCHES	173.7500N	131.8 (T3)	163.8250N	131.8 (T3)	COPERNICUS PK LINKED W/CMD 3, 10, 11, & 38	
7	TACTICAL	CDF T31	DIV M	159.3825N	192.8 (T16)	159.3825N	192.8 (T16)		
8	TACTICAL	VTAC11	DIV N	151.1375N	156.7 (T6)	151.1375N	156.7 (T6)		
9	TACTICAL	VTAC13	DIV O	158.7375N	156.7 (T6)	158.7375N	156.7 (T6)		
10	TACTICAL	VFIRE 23	DIV T	154.2950N	156.7 (T6)	154.2950N	156.7 (T6)		
11									
12	TACTICAL	VFIRE 24	SUPPRESSION REPAIR	154.2725N	156.7 (T6)	154.2725N	156.7 (T6)		
13	ROTARY A/G	CDF T15	ALL BRANCHES	159.2700N	192.8 (T16)	159.2700N	192.8 (T16)	ROTARY AIRCRAFT AIR TO GROUND	
14	FIXED WING A/G	CDF T20	ALL BRANCHES	159.3750N	192.8 (T16)	159.3750N	192.8 (T16)	FIXED WING AIRCRAFT AIR TO GROUND	
15	MEDICAL	CALCORD	ALL BRANCHES	156.0750N	156.7 (T6)	156.0750N	156.7 (T6)		
16	EMERGENCY	GUARD 27	ALL BRANCHES	168.6250N		168.6250N	110.9 (T1)	AIR GUARD	
17									
18									
19									
20	EMERGENCY	GUARD 27	ALL BRANCHES	168.6250N		168.6250N	110.9 (T1)	AIR GUARD	

5. Special Instructions
 TO CONFIRM YOU HAVE THE MOST CURRENT CLONE, ENSURE YOUR DISPLAY OF CHANNEL 16 OR 20 MATCHES CHANNEL 16 OR 20 OF THE 205 - HEIGHT AND POWER ARE KEY WHEN USING RADIOS; BE AT A HIGH POINT, USE A MOBILE IF POSSIBLE, AND USE RADIO RELAYS WHEN NEEDED

6. Prepared by (Communications Unit Leader): Name: John Brooks, IMT6	Signature:  Date/Time: 08/26/20 1930
---	--

TRAINING MESSAGE

TRAINEES:

IF YOU HAVE ANY QUESTIONS REGARDING YOUR TRAINING ASSIGNMENT, PLEASE CONTACT THE TRAINING SPECIALIST.

TRAINERS:

TO PROVIDE A QUALITY TRAINING ASSIGNMENT, PLEASE REMEMBER TO REVIEW THE TASK BOOK WITH YOUR TRAINEE AND SET GOALS FOR EACH OPERATIONAL PERIOD.

*DON'T TRAIN UNTIL YOU GET IT RIGHT,
TRAIN UNTIL YOU CAN'T GET IT
WRONG!!*

Any questions please contact the Training Specialist:

Shane Vargas (530) 410-4225

Dottie Shaw (619) 971-1701

Ian Crossley (530) 681-5100

ATTN: Federal Resources (specifically Federal Contracted Resources/ADs)

RE: Virtual Finance Support

If you are assigned to a CAL FIRE managed incident, you have noticed that there is no "federal" time unit on site. We have developed a virtual finance section to provide you with your invoices/time sheets. We will need for you to **scan and email** your documents to the R5.CalFire.Support@firenet.gov email address. (The CAL FIRE finance section may have a scanner available if you do not have a "scanning" app on your phone and/or computer.) In the subject line enter:

TIME - Resource # - Company/Person Name – Attachment description - Fire Name/Number

Contract Crew/Equipment:

We need for you to send us the following information (even if you have submitted it to the CAL FIRE finance unit):

- Contact name, phone number, and email for on-site "leader"
- Resource Order
- Contract (Pages 1-2 and any additional pages referencing equipment/resource information)
- Crew Manifest
- Inspection (if one was done)
- Shift Tickets (signed by you and your incident supervisor) / CTRs (signed by your incident supervisor)

Administratively Determined (AD) Resources:

We need for you to send us the following information:

- Contact phone number and email
- Resource Order
- Casual Hire Form
- CTRs (signed by your incident supervisor)

Federal Employees:

As of right now, we are not planning to create OF-288s for Federal "regular" employees. Each of you can utilize your CTRs as your backup documentation for submitting your time sheets.

IF, however you require an OF-288, we will do our best to accommodate your needs. If you are claiming Hazard Pay, just like always, you must provide a justification for the claim ("H=Hazard") is NOT enough. Use "action verbs" to explain what/why you are claiming the hazard.

WHEN YOU ARE CLOSE TO DEMOB:

- Give Finance a "Courtesy Email" 1-2 days prior to make sure all your documents have been received.
- Submit all time documentation (including travel home) ahead of demob.
- Send an email the morning of your demob to the Support email so the demob process can be started from the virtual finance group.

EMAIL: R5.CalFire.Support@firenet.gov

Please **do not** wait until the end of your assignment to get us your information. Since we are virtual, the process will take additional time.

SHIFT TICKET EXAMPLE

EMERGENCY SHIFT TICKET and EVALUATION FORM					Contractor Name DOZER DUDE						
Incident or Project Name SCU LIGHTNING COMPLEX		Incident Number CASCU 005740	Request Number E#		Operator #1 BOB SMITH	Operator #2 TOM SMITH					
Agreement Number XXX - 000000 - 00					Operator Furnished By: <input checked="" type="checkbox"/> Contractor <input type="checkbox"/> Government						
Equipment Make CAT		Equipment Model / Type D6XM			Operating Supplies Furnished By: <input checked="" type="checkbox"/> Contractor <input type="checkbox"/> Government						
Serial Number 111111		Licence Number 111111			Equipment Status <input checked="" type="checkbox"/> Inspected <input checked="" type="checkbox"/> Under Agreement						
Equipment Use (Circle) Hours Days / Miles					Released by Government Withdrawn by Contractor						
Date	Start	Stop	Work	Assignment	Remarks/Comments ** NO DAMAGE/ NO CLAIMS						
Mo / Day											
8/17	0700	2400	17	DIV M							
8/18	0001	0700	7	DIV M							
Vendor Rating					Govt. Rep. Name and Position - PRINT Mike Weber						
<table border="1"> <tr> <td>Poor*</td> <td>Avg.</td> <td>Good</td> <td>Exc.</td> <td>N/A</td> </tr> </table>					Poor*	Avg.	Good	Exc.	N/A	Govt. Rep. Signature <i>Mike Weber</i>	
Poor*	Avg.	Good	Exc.	N/A							
Met Performance Expectations					Contractor Signature <i>Bob Smith</i>						
Equipment in Safe Working Condition					Date 08/18/20 Time 0800						
Operator Skill Level					CALFIRE 297 (Rev 3-2011)						
Operates Safely					Pink - Finance						
Operator's Cooperation Level					Blue - Home Unit HE Coordinator						
Overall Performance					Yellow - Vendor						
					White - Govt Representative						

* NOTE: Any rating of POOR requires an explanation in Comment Section.
 **Final evaluation or for more documentation, use an ICS Form 230 or equivalent.

EMERGENCY SHIFT TICKET and EVALUATION FORM					Contractor Name DUDE TRANSPORT						
This responsible Government Officer will complete this form each shift											
Incident or Project Name SCU LIGHTNING COMPLEX		Incident Number CASCU 005740	Request Number E # Here		Operator #1 BOB SMITH	Operator #2 TOM SMITH					
Agreement Number XXX - 000000 - 00					Operator Furnished By: <input checked="" type="checkbox"/> Contractor <input type="checkbox"/> Government						
Equipment Make TRANSPORT/ KENWORTH		Equipment Model / Type COZAD TRAILER /26 WHEELS			Operating Supplies Furnished By: <input checked="" type="checkbox"/> Contractor <input type="checkbox"/> Government						
Serial Number 1XP3ESMP14239012		Licence Number 9999999			Equipment Status <input checked="" type="checkbox"/> Inspected <input checked="" type="checkbox"/> Under Agreement						
Equipment Use (Circle) Hours Days / Miles					Released by Government Withdrawn by Contractor						
Date	Start	Stop	Work	Assignment	Remarks/Comments ** NO DAMAGE/ NO CLAIMS						
Mo / Day											
8/17	0700	2400	17	DIV M							
8/18	0001	0700	7	DIV M							
Vendor Rating					Govt. Rep. Name and Position - PRINT Mike Weber						
<table border="1"> <tr> <td>Poor*</td> <td>Avg.</td> <td>Good</td> <td>Exc.</td> <td>N/A</td> </tr> </table>					Poor*	Avg.	Good	Exc.	N/A	Govt. Rep. Signature <i>Mike Weber</i>	
Poor*	Avg.	Good	Exc.	N/A							
Met Performance Expectations					Contractor Signature <i>Bob Smith</i>						
Equipment in Safe Working Condition					Date 08/18/20 Time 0800						
Operator Skill Level					CALFIRE 297 (Rev 3-2011)						
Operates Safely					Pink - Finance						
Operator's Cooperation Level					Blue - Home Unit HE Coordinator						
Overall Performance					Yellow - Vendor						
					White - Govt Representative						

* NOTE: Any rating of POOR requires an explanation in Comment Section.
 **Final evaluation or for more documentation, use an ICS Form 230 or equivalent.

Turn shift tickets into Time Unit.



PUBLIC INFORMATION



Official Sources of Public Information

Incident Information Line: 916-618-3195

Incident Media Line: 925-588-6809

Incident Website: www.fire.ca.gov

Email Signup: <https://tinyurl.com/CALFIREMEDIA>



SCAN ME

EMAIL SIGN UP



SCAN ME

EVACUATION MAPS

STATUS	
Incident Start Date: August 16, 2020	Incident Start Time: 4:00 AM
Acreage:	Containment:
Cause: Under Investigation	Total Personnel:

Media Law

The [California State Penal Code Section 409.5\(d\)](#) allows the news media to enter scenes of disaster, riot, or civil disturbance. Properly identified members of the news media should not be restricted from entering locations specified within the code. However, this does not include crime scenes, and does not imply that the news media may interfere with incident operations while they are in the areas of concern. If entering such a location that is hazardous, they should be advised; media access cannot be prevented for safety reasons unless their presence would impede CAL FIRE's mitigation of the incident or the disturbing of evidence. When working around the media, remember:

- Media **is not permitted** on private property without the property owners permission.
- If approached and questioned by the media and or the public, talk about your assignment or task at hand. Remember to wear all the appropriate PPE.
- If needed call for an incident PIO through the chain of command.
- Never speculate, give opinions or speak for others.
- There is no such thing as an "off the record" comment.

CAL FIRE Social Media Policy (Social Media 0691)

Social Media is increasingly being used by public agencies, the media as well as the public. This form of communication continues to grow rapidly in order to supply the instant gratification needs of society. Therefore when on a CAL FIRE incident you will adhere to the CAL FIRE Social Media Policy, 0691. You can get further information about the CAL FIRE Social Media Policy from the incident Public Information Officer. While assigned to the incident, there will be no posting of:

- Inappropriate information or materials, no opinions, no endorsements, inappropriate pictures or videos

Lost and Found

The Information Section will manage Lost and Found items for the incident. If you have lost an item leave your contact information and what you have lost at the Information Section. If you have found an item on the incident bring the item to the Information Section with your contact information as well.

Incident Base Camp Mailing Address

c/o Public Information Office/Trailer
4501 Pleasanton Ave.
Pleasanton, CA 94566
Pleasanton Ave Street Entrance

Peer Support Team Message:

INCIDENT PEER SUPPORT:

We have a few people on the incident for any peer support related needs. The best way to get a hold of them is to call them directly.

Jeremy Sanders-916 281-6472

Shawna Powell-530 717-0667

John Kiszka-530 598-2615

Amber Henderson-805 794-1690

Clinician

Jill Gustafson-530 957-8020

or

CAL FIRE Peer Support/Helpline

916-445-4337

Below are other Team Members not on the incident who can also be contacted directly:

Tony Howard 916-224-1543

Mike Aiello 916-584-0548

Warren Parrish 916-823-6641

Nikole Schutz 916-709-0434

Amy Head 916-956-3277

Chris Lomanto 916-247-6974

Connie Quarisa 916-213-8697

In addition to peer support, if there is a need, we can have a culturally competent Clinician available on the incident that could meet with you on an individual and/or group basis.

Watch for the signs and symptoms of stress in yourself and the people around you. Try and stay positive and get much needed rest when you can. We can do this, together!

Stay Healthy, Stay Alert and Stay Strong!

CAL FIRE Employees can also contact EAP directly at: 1-866-327-4762

SCU Lightning Incident Maps may be accessed

by going to:

<https://ftp.nifc.gov>

or google: "nifc ftp"

Click:

> Incident Specific Data

> calif_n

> !CALFIRE

> 2020_Incidents

> CA-SCU-005740_SCU_Lightning_Complex

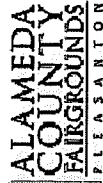
> GIS > Products

> Desired Date > Select desired map

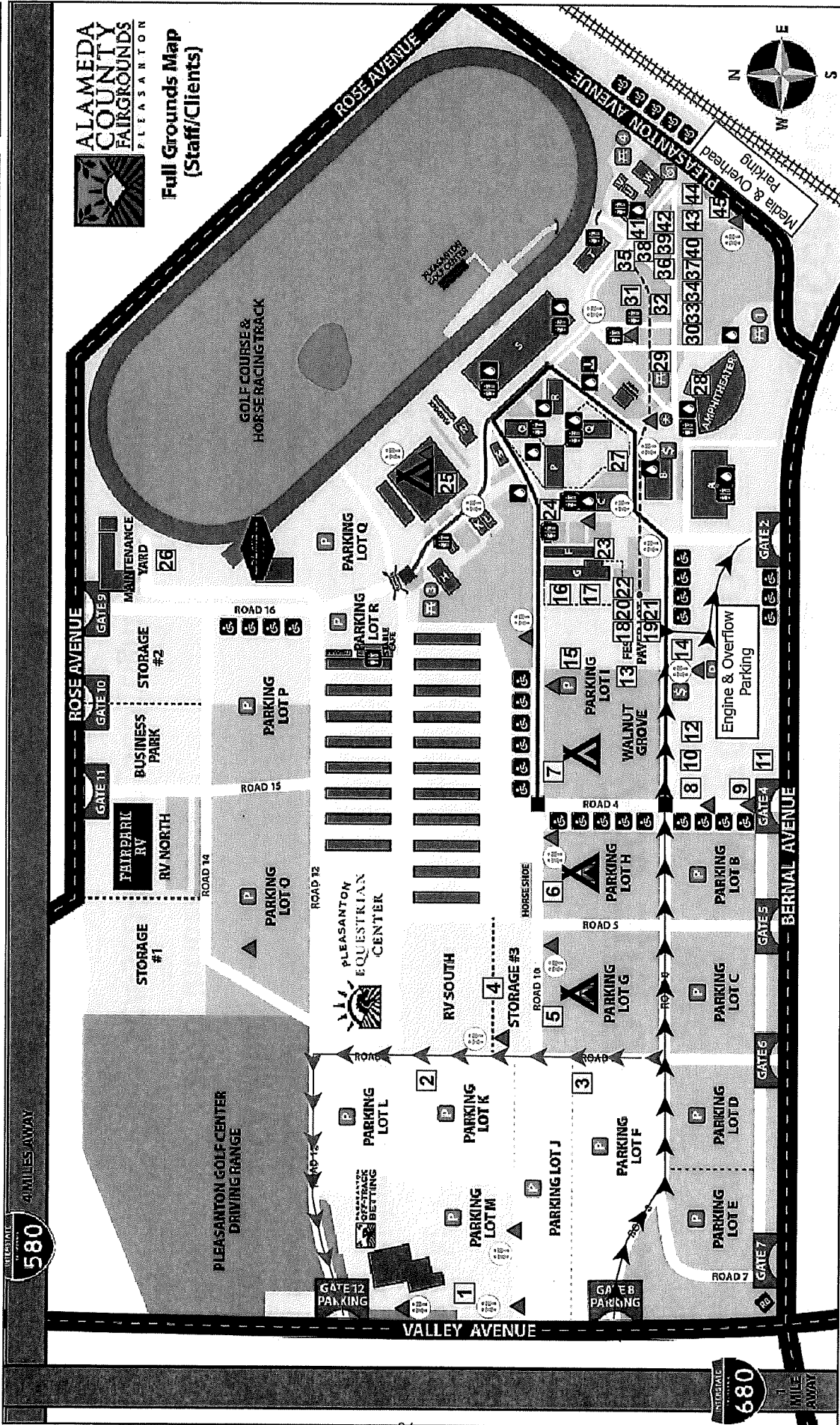
> Generally, the single most beneficial map to download is the Ops Map

SCU LIGHTNING COMPLEX INCIDENT FACILITIES MAP

CA SCU 005740



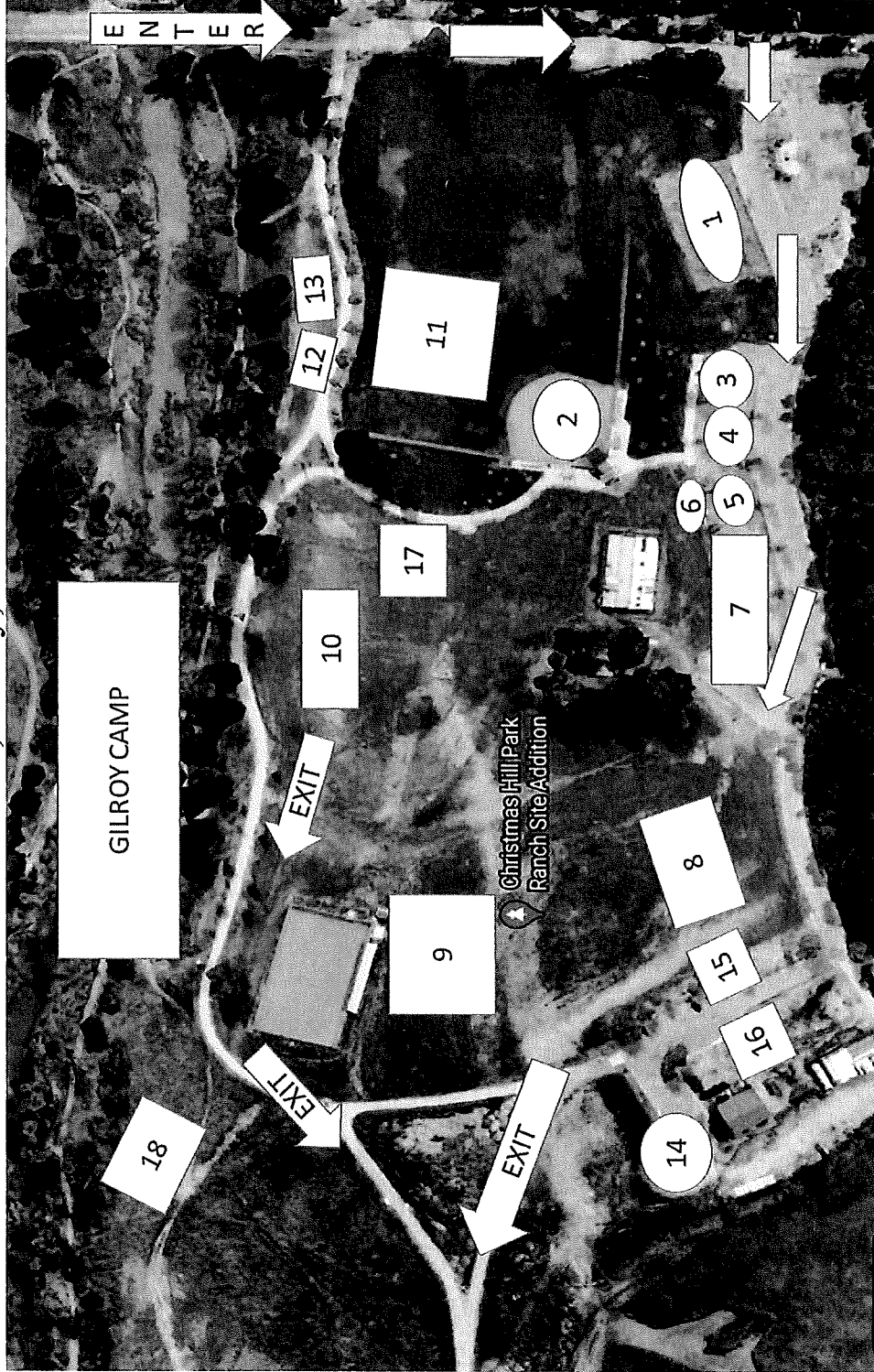
ALAMEDA COUNTY FAIRGROUNDS PLEASANTON
Full Grounds Map (Staff/Clients)



1	Ground Support	6	COC Sleeping	11	Chainsaw Repair	16	Showers	21	Motels	26	Potable, Grey Water	31	Sheriff ALCO	36	Operations	41	JIC
2	Fuel	7	Crew Sleeping	12	Lunches	17	Laundry	22	CAL OES	27	InclNet	32	Finance	37	COMMS	42	Plans
3	Dozer Parking	8	Water	13	CAL-MAT	18	Comp Claims	23	Facilities	28	Briefing	33	Safety	38	Liaison	43	Situation
4	Vendor Staging	9	Supply	14	COVID screening	19	Check-In & Demob	24	Food Unit	29	Employee Support Services	34	FBAN	39	Resources	44	JIC
5	Vendor Sleeping	10	Ice	15	Sleep Trailers	20	Time Unit	25	Inmate Sleeping	30	Medical	35	Ordering/LOGS	40	Clerical	45	PIO

- ▲ Hand Washing Station
- ⚡ Tent Area
- ⚡ Porta Potty
- ⚡ Dozer Route
- ⚡ MAP ID
- ⚡ General Route

Christmas Hill Park
 7050 Miller Road, Gilroy, CA 95020



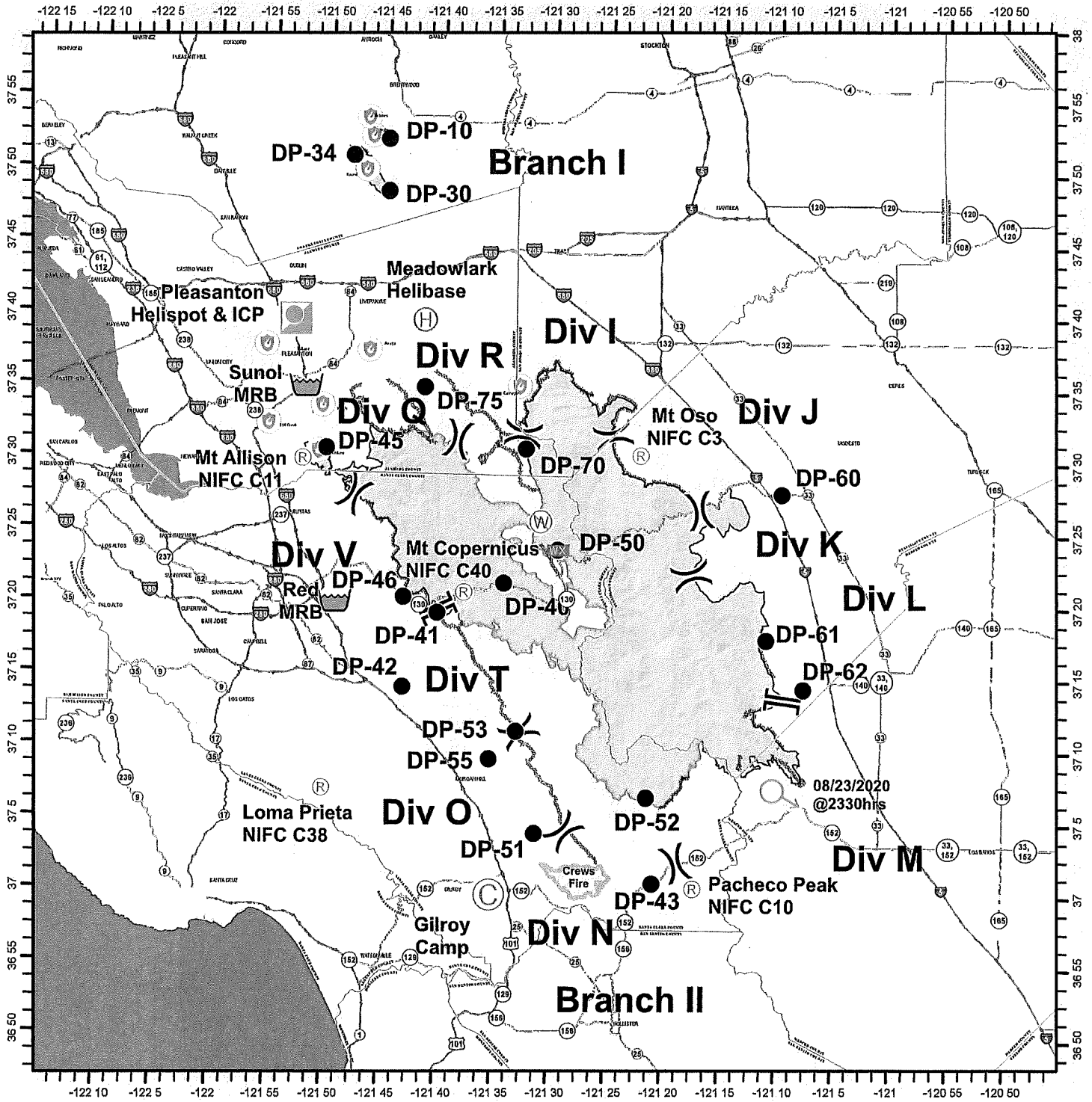
1. Feeding
2. Briefing
3. Plans
4. Motel, Logs Medical
5. Finance
6. Copy trailer
7. Overhead
8. Engines
9. Dozers
10. Fuel
11. Sleeping
12. Showers
13. Laundry
14. Supply
15. Hydration
16. Lunches
17. Med tent
18. Trailer camping

ALL HEAVY EQUIPMENT enter off of Grenache Way (use 7121 Grenache Way for GPS directions)
 All others use Miller Road as your main entrance

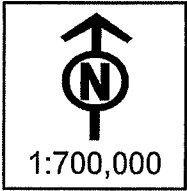


SCU LIGHTNING COMPLEX INCIDENT TRANSPORTATION MAP

CA SCU 005740 - 8/27/2020



CAL FIRE - INCIDENT MANAGEMENT TEAM 6 *Established 1994*



IMT 6 GISS
8/26/2020
2240 Hours
NAD 83 Teale Albers

UNIT LOG (ICS 214)

1. Incident Name: SCU LIGHTNING COMPLEX	2. Operational Period: Date From: 8/27/20 Date To: 8/28/20 Time From: 0700 Time To: 0700
---	--

3. Unit Name/Designators	4. Unit Leader (Name and ICS Position)
---------------------------------	---

5. Personnel Assigned/Designators		
NAME	ICS POSITION	HOME BASE

6. Activity Log (Continue on Reverse)	
TIME	MAJOR EVENTS

7. Prepared By:	Date/Time:	NIMS IAP
-----------------	------------	----------

