

121°54'0"W

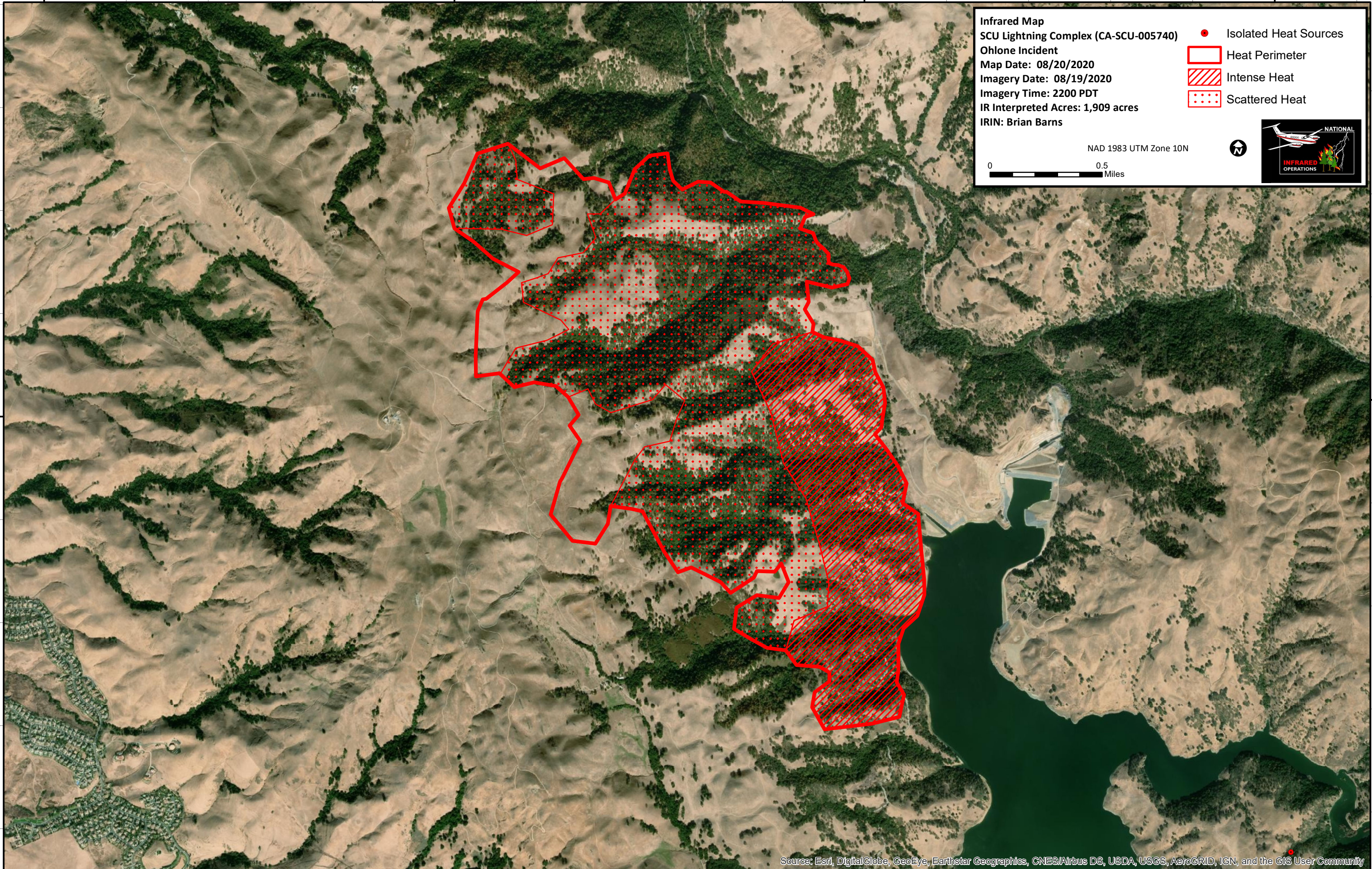
121°52'0"W

121°50'0"W

121°48'0"W

37°30'0"N

37°30'0"N



Infrared Map
SCU Lightning Complex (CA-SCU-005740)
Ohlone Incident
Map Date: 08/20/2020
Imagery Date: 08/19/2020
Imagery Time: 2200 PDT
IR Interpreted Acres: 1,909 acres
IRIN: Brian Barns

- Isolated Heat Sources
- Heat Perimeter
- Intense Heat
- Scattered Heat

NAD 1983 UTM Zone 10N

0 0.5
Miles

Source: Esri, DigitalGlobe, GeoEye, Earthstar Geographics, CNES/Airbus DS, USDA, USGS, AeroGRID, IGN, and the GIS User Community

121°54'0"W

121°52'0"W

121°50'0"W

121°48'0"W