

INCIDENT ACTION PLAN

ZOGG INCIDENT

CA-SHU-09978



OPERATIONAL PERIOD

9/30/2020 0700

to

10/1/2020 0700



Wednesday

INCIDENT OBJECTIVES (ICS 202)

1. Incident Name: Zogg	2. Operational Period:	Date From: 9/30/2020	Date To: 10/1/2020
		Time From: 0700	Time To: 0700

3. Objective(s):

- Management Objectives
- Provide for emergency personnel and public safety.
 - Ensure COVID-19 precautions and best practices are met.
 - Protect property, improvements, and infrastructure.
 - Ensure coordinated, timely and accurate release of public information.
 - Foster and maintain relationships with all cooperators and stakeholders.
 - Protect economic, natural, cultural and heritage resources.
 - Maintain fiscal accountability and keep costs commensurate with values at risk.

- Control Objectives
- Keep the fire North of Highway 36
 - Keep the fire South of Highway 299
 - Keep the fire East of Bully Choop Road.
 - Keep the fire West of Gas Point Road, Placer Road, Swasey Drive.

General Situational Awareness:

Steep and rugged terrain, critically dry and receptive fuel beds, active area for fire history and drought stressed trees.

In the COVID-19 environment, high density populations or large groups are particularly at risk. To help protect yourself, your family and to ensure all employees return home safely, make sure to practice social distancing.

Enhanced hygiene (especially handwashing), PPE & monitoring practices help limit the infection rate of first responders.

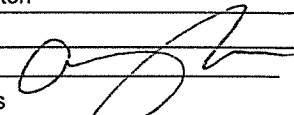
i. Site Safety Plan Required? Yes No

Approved Site Safety Plan(s) Located at:

- ii. Incident Action Plan**
- | | | | |
|---|--|--|---|
| <input checked="" type="checkbox"/> ICS 203 | <input checked="" type="checkbox"/> ICS 215A | <input type="checkbox"/> ICS 205 A | <input type="checkbox"/> |
| <input checked="" type="checkbox"/> ICS 204 | <input checked="" type="checkbox"/> ICS 220 | <input checked="" type="checkbox"/> Training Message | <input type="checkbox"/> |
| <input checked="" type="checkbox"/> ICS 205 | <input checked="" type="checkbox"/> Facility Maps | <input type="checkbox"/> Travel Map | <input type="checkbox"/> |
| <input checked="" type="checkbox"/> ICS 206 | <input checked="" type="checkbox"/> Weather Forecast | <input type="checkbox"/> Demob Plan | <input checked="" type="checkbox"/> County Health Message |
| <input checked="" type="checkbox"/> ICS 208 | <input checked="" type="checkbox"/> Fire Behavior | <input type="checkbox"/> Finance Message | <input checked="" type="checkbox"/> ICS 214 |

Prepared By: Andrew Murphy	Position/Title: PSC	Signature:	
Approved by Incident Commander:	Sean Kavanaugh	Signature:	

ORGANIZATION ASSIGNMENT LIST (ICS 203)

1. Incident Name: Zogg		2. Operational Period: Date From: 9/30/2020		Date To: 10/1/2020	
		Time From: 0700		Time To: 0700	
3. Incident Commander(s) and Command Staff:			7. Operation Section:		
IC/UC's	Sean Kavanaugh	Operations	Chris Waters		
Deputy	N. Casci / R. Myers / B. Carter	Deputy Operations	Abdul Ahmad / Jason Marsh		
Safety Officer	Chad Thompson	Night Ops	Brian Noel		
Information Officer	Jeremy Rahn / Toni Davis (T)	Staging Area	ONO	Ben Riley	
Liaison Officer	S. Walker / K. Pack / J. Owens	Branch	I	Rick Valles	
4. Agency/Organization Representatives:		Division/Group	A	Dennis Lange	
Agency/Organization	Name	Division/Group	C	S. Lowe / Jesse Winnen (T)	
Shasta/Trinity - NF	J. Courtright	Division/Group			
PG&E	D. Hotchkiss	Division/Group			
Bureau Land Mgt.	J. Mata / R. Winkler	Division/Group			
CAL TRANS	J. Miller	Branch	II	Magnus Jonsson	
Shasta Co. Sheriff	E. Magrini	Division/Group	E	Larry Turman (STL 9260C)	
Tehama Co. Sheriff	D. Hencratt	Division/Group	F	Mark Pimentel (STL 9420C)	
CA State Parks	A. Wright	Division/Group	H	Matt Troehler (STL 9251C)	
CAL OES	J. Salvate	Division/Group			
National Park Service	J. Akerberg	Division/Group			
SPI	N. Kroencke	Branch	V	Bill Lopez	
CCC	N. Thomas	Division/Group	M		
CHP	G. Baarts	Division/Group	P	Robert Veverka	
		Division/Group	Y	Brian Gibilisco / Alex Elward (T)	
		Division/Group			
		Division/Group			
		Branch			
		Division/Group			
5. Planning Section:		Division/Group			
Chief	Andrew Murphy	Division/Group			
Deputy	Jeff Windham / Roger Noon	Division/Group			
Resource Unit	A. Hubbs / K. O'Neil / G. Padilla	Division/Group			
Situation Unit	Keith Tsudama	Branch			
Documentation Unit		Division/Group			
Demobilization Unit	S. Atchison / M. Brady	Division/Group			
GISS	F. Postler / Q. Bunstock de Hinosina	Division/Group			
FBAN	Robbie Clark	Division/Group			
IMET	Robert Rickey	Division/Group			
Training Tech Spec	Claudia Soiza	Air Operations Branch		Director:	Mike Deacon
DINS	Gene Potkey	Air Support Group Supervisor		Brad Idol	
		Air Tactical Group Supervisor		Scott Brockman	
		Helibase Manager		Phil Michael	
6. Logistics Section:					
Chief	K. Lowe / M. Ferguson / J. Aguilera				
Supply Unit	M. Siebecke	8. Finance/Administration Section:			
Facilities Unit	S. Irvine / B. Smutney	Chief	Chuck Carroll / Joe Flagg		
Ground Support Unit	Mike Esparza	Time Unit	Micah McConnell		
Communications Unit	John McCormick	Procurement Unit	Josh Shifrin		
Medical Unit	Justin VanderHulst	Comp/Claims Unit	Ceser Nerey		
Motel Tech Spec	Sierra Falkenstein	Cost Unit	Michele Patton		
Ordering Manager	C. Hunt / L. Ellickson				
Prepared By: Name:	Andrew Murphy	Position/Title:	PSC	Signature:	
ICS 203		Date/Time:	9/29/2020 2300 hours		



Fire Weather Forecast



FORECAST NO: #1
 PREDICTION FOR: Wednesday
 OPERATIONAL PERIOD: 9/30/20 0700-10/1/20 0700
 FORECAST ISSUED: 9/29/2020 at 1900

INCIDENT: Zogg
 UNIT: Shasta Trinity
Robert Rickey
 Incident Meteorologist: Robert Rickey

Weather Discussion: Strong high pressure will bring another round of hot and very dry conditions to the area today, with temperatures climbing into the 90s and afternoon humidity in the low-teens. Expect light winds throughout the day, with winds shifting to the southeast in the afternoon. **In the evening, gusty west to northwest winds will develop across the area.** Winds are expected to peak before midnight, but elevated wind speeds will persist through the overnight hours. On Thursday and Friday, strong high pressure will continue to bring hot and very dry conditions, and gusty west to northwest winds may continue to develop each evening and overnight.

WEATHER FORECAST

Today: *Hot and Very Dry*****

Weather: Sunny with areas of smoke.

High Temperatures: 90-96

Min RH: 11-17%

20 FOOT WINDS:

All Divisions: Variable 3-6 mph through 1200. After 1200, SE 4-8 mph.

Chance of Wetting Rain ($\geq 0.10''$)...0% LAL...1

Mixing Height...10,000 ft AGL Transport Wind...Light <5 mph

Tonight: *Northwest, Downslope Winds*****

Weather: Mostly clear with areas of smoke.

Low Temperatures: 66-72

Max RH: 31%-37%

20 FOOT WINDS:

Div P, Y, A, C, M: SE 4-8 mph through 1900. After 1900, NW 6-12 gusting 15-20 mph.

Div H, F, E: SE 4-8 mph through 1900. After 1900, W 5-10 gusting 13-19 mph.

Chance of Wetting Rain ($\geq 0.10''$)...0% LAL...1

Outlook for Thursday: *Hot and Very Dry*****

Weather: Sunny with areas of smoke.

High Temperatures: 91-97

Min RH: 7-13%

20 FOOT WINDS:

NW 5-10 mph. After 1900, WNW 6-12 gusting 15-20 mph with breezy conditions persisting overnight.

Chance of Wetting Rain ($\geq 0.10''$)...0% LAL...1

Mixing Height...12,000 ft AGL Transport Wind...Light <5 mph

Extended Outlook for Friday: *Hot and Very Dry*****

Weather: Sunny with areas of smoke.

High Temperatures: 88-94

Min RH: 10-16%

20 FOOT WINDS:

NW 5-10 mph. After 1900, WNW 6-12 gusting 15-20 mph with breezy conditions persisting overnight.

Chance of Wetting Rain ($\geq 0.10''$)...0% LAL...1

Mixing Height...10,000 ft AGL Transport Wind...Light <5 mph



Nearby Observations

FIRE BEHAVIOR FORECAST

FORECAST NUMBER: 2	TYPE OF FIRE: WILDLAND FIRE
FIRE NAME: Zogg (CASHU 009978)	OPERATIONAL PERIOD: 09/30/20 – 10/1/20 24hr
DATE ISSUED: 09/29/2020	TIME ISSUED: 1900Hrs
UNIT: CA-SHU	SIGNED: Robert Clark Typed/printed: R. Clark

INPUTS

WEATHER SUMMARY: *See official forecast*****

Sky/ Weather.... *Hot and Very Dry*****

Max Temp 90-96F Min RH 11-17%

Wind (20 ft)

Day: Variable 3-6 mph through 1200. After 1200, SE 4-8 mph.

Night: Div P, Y, A, C, M: SE 4-8 mph through 1900. After 1900, NW 6-12 gusting 15-20 mph.
Div H, F, E: SE 4-8 mph through 1900. After 1900, W 5-10 gusting 13-19 mph.

OUTPUTS

FIRE BEHAVIOR

GENERAL: The fire is burning in grass, oak woodland, chaparral, and mixed timber. Some areas within recent burn scars have an abundance of dead standing and down fuels with grass understory. Fuels are extremely dry and will provide a receptive fuel bed for any spot fires through the forecast period. The area has an above normal grass crop due to late season rains. Live fuel moistures in the area are at a critical level (around 60%) and 1000-hour dead fuel moistures are around 7%. Large diameter fuels will continue to consume and be a source for spotting or rollout. Complex terrain features and intersecting drainages provide the opportunity for slope reversal and terrain driven runs. Evening winds will challenge control lines.

Grass – **Rate of Spread** up to .7-1.5 mi/hr **Flame Lengths** 4-15 ft.

Brush/Timber – **Rate of Spread** up to .5-1 mi/hr **Flame Lengths** 10-20 ft.

Rates of spread and flame lengths could exceed forecasted values.

Probability of Ignition: up to 90% **Spotting Distance:** Spotting up to .25-.5 mile. (Peak gusts)

SPECIFIC:

Branch I- Fire spread to the north towards Kanaka Peak. If the fire spots to the east across Clear Creek drainage, upslope runs towards Mule Town Road and Mule Mountain are possible.

Branch II- Residual interior heat and smoldering fuels near the control line will be a potential source for spot fires with the forecasted evening winds. Ensure mop up is thorough near the control line. Active fire behavior should be expected if the fire gets outside the containment lines.

Branch V- Continued spread to the north and west into North Fork Cottonwood Creek drainage, Moon Fork Cottonwood Creek drainage, and Jerusalem Creek drainage with slope reversal and terrain driven upslope runs possible.

AIR OPERATIONS: Sunrise: 0705 Sunset: 1852

Hazy smoke conditions will limit visibility

SAFETY

Watch for fire-weakened trees/branches falling after extended burn-out times of heavy fuels.

Mop up should be more extensive in areas that could generate wind-blown embers across the line.

Fuel loading in the grass is significantly higher than past years, expect slower production rates, resistance to suppression action and higher BTU output.



ZOGG SAFETY MESSAGE

Maintain Situational Awareness

INCIDENT: Zogg Fire CA-SHU-009978	DATE: September 30, 2020	TIME: 0700-0700
--	---------------------------------	------------------------

Major Hazards and Risks: Limited resources, Fatigue, Fire behavior, Hot dry weather,

Fire Behavior: Fuels are receptive to fire spread. A small amount of wind on this dry fuel changes fire behavior dramatically!! Be alert to changes in wind direction and expect changes in fire behavior. Watch for spot fires outside the control lines. Plan for long-range spotting.

Personnel: Manage yourself and those around you for fatigue. Drink fluids frequently and eat nutritious food regularly. As fatigue increases, injuries tend to increase also. Keep an eye on your crew and partner. Stay engaged and make smart decisions.

Fatigue: Limited resources and hot, dry, windy weather for the next several days. Be alert for signs of fatigue and take breaks as necessary. Be alert for signs of fatigue in yourself and others.

Driving: Slow Down! Drive defensively. Narrow winding roads. Expect the unexpected around every curve. Drive with headlights and seatbelts on. Coordinate your movements on one-lane roads.

Downed powerlines: Follow Powerline Safety guidelines in the IRPG, watch out for burned out power poles.

Hazard trees: Survey your work areas for hazard trees, flag and restrict access, use only qualified personnel for tree felling. Dead trees from bug kill. Review and follow Hazard Tree Safety in your IRPG.

Steep slopes/rolling material: Watch your footing while hiking in steep terrain. Be careful of loose rolling debris. Maintain Situational Awareness.

Review your ICS 206 and know what to do in the event of an (IWI).

Lookouts, Communication, Escape routes, Safety zones

Tailgate Safety

- **Accountability:** everyone checks in and everyone checks out. Supervisors know where their crews are at all times
- **Communication:** everyone knows the com-plan
- **Briefing:** everyone knows the plan and the contingency plan
- **Safety gear:** All safety gear in good working condition
- **LCES:** they are clear and made known to everyone

Covid-19 Precautions:

- Keep your distance. Wear a mask when less than 6' from other people.
- Wash your hands
- No group gatherings without masks
- Don't show up to work sick
- Do daily health evaluations on your personnel each day.



ZOGG FIRE INCIDENT RISK ANALYSIS (ICS 215a)

DIV	HAZARDOUS ACTIONS/CONDITIONS	MITIGATIONS / WARNINGS / REMEDIES
ALL	FIRE BEHAVIOR	Review Wildland Urban Interface Firefighting in the IRPG. Monitor current weather conditions and forecasts. Make sure all personnel receive thorough briefings every shift. Work within your capabilities when limited resources are available. Maintain adequate escape routes and safety zones. Set trigger points when appropriate. Plan for long-range spotting. Adhere to the 10 Fire Orders, mitigate 18 Situations. Maintain Situational Awareness.
ALL	STEEP TERRAIN / ROLLING DEBRIS	Watch your footing while hiking in steep terrain. Be careful of loose rolling debris. Maintain Situational Awareness and separation.
ALL	HAZARD TREES	Identify snags and hazard trees and isolate the area to provide for safety of others. Flag and make the proper notifications. Evaluate all trees prior to working under or near them. Watch out for snags. Don't fall any tree outside of your qualification.
ALL	FATIGUE / HEAT / DEHYDRATION	During periods of hot/dry weather with limited resources be alert for signs of fatigue and take breaks as necessary. Monitor incoming resources for level of fatigue. Drink water before, during and after shifts, up to 1.5 gal. per shift. Be alert for signs of heat stress in yourself and others; use the buddy system. Eat small meals often and when possible.
ALL	POWER LINES	Follow <i>Powerline Safety</i> guidelines in the IRPG. Communicate power line hazards to immediate supervisor. Flag area around downed power lines and deny access. Treat all downed power lines as energized.
ALL	BACKFIRING and BURNOUT OPERATIONS	Before beginning a backfiring or burnout operation, ensure that: Lookouts are posted, communications are established with both firing and holding teams, escape routes and safety zones are established and not compromised by the firing operations. Ensure approval and relay to all adjoining forces. Follow the Firing Operations Checklist. Wear full PPE.
ALL	DOZER SAFETY	Watch for rolling material. Monitor safe working distances. Avoid working below a Dozer. Utilize communication with the operator (radio or hand signals) Watch for signs indicating buried high-pressure gas lines, stay out of the dust.
ALL	DRIVING	Drive defensively! Narrow winding roads are hazardous. Slow Down. Drive with headlights on and seatbelts on. Be alert for heavy trucks and high-speed opposing traffic crossing into your lane. Use warning devices when operating near traffic.
ALL	AIRCRAFT OPERATIONS	Monitor air-to-ground frequency, they are your eyes in the sky. Use air-to-ground frequency to communicate with aircraft. Use clear, concise statements when directing aircraft.
ALL	MINE SHAFTS	Be alert for abandoned mine shafts in fire area. They may not be marked on maps. If found, flag area, notify all line personnel, DIVS, OPSC, & SOFR, keep personnel out of area. Do not enter.
ALL	LINE CONSTRUCTION	Conduct thorough briefing for all personnel. Ensure LCES in place prior to engagement. Establish adequate safety zones. Use Downhill Line Checklist. Utilize Risk Management Process (IRPG).
ALL	COVID 19	Maintain 6' distance whenever possible. Utilize masks, frequent hand washing/sanitizing, disinfect common surfaces, follow Shasta County Public Health Guidelines. Monitor for symptoms, follow reporting procedure.
Incident Name: Zogg Fire ICS 215a		DATE PREPARED: September 29, 2020 1745hrs Prepared by: Chad Thompson SOF1
		OPERATIONAL PERIOD 09-30-2020 0700-0700

COVID-19

Protect yourself and loved ones



Help prevent the spread of respiratory diseases like COVID-19

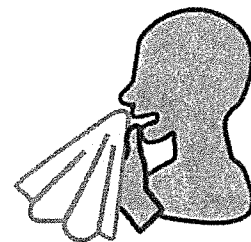
+ WASH YOUR HANDS

Wash your hands with soap and warm water regularly.



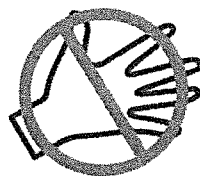
+ COVER A COUGH OR SNEEZE

Cover your cough or sneeze with your sleeve, or tissue. Dispose of tissue and wash your hands afterward.



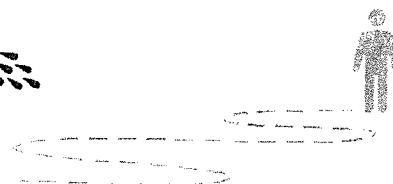
+ DON'T TOUCH

Avoid touching eyes, nose or mouth, especially with unwashed hands.



+ KEEP YOUR DISTANCE

Avoid close contact with people who are sick.



+ STAY HOME

If you experience respiratory symptoms like a cough or fever, stay home.



+ GET HELP

If you experience symptoms of COVID-19 (cough, fever, shortness of breath), call your health care provider or local health department before seeking care.



MORE INFORMATION

Follow the California Department of Public Health: @capublichealth and www.cdph.ca.gov/covid19



Shasta County Health & Human Services Agency

ASSIGNMENT LIST (ICS 204 WF)

CONTROLLED UNCLASSIFIED
INFORMATION//BASIC

1. Incident Name: <p style="text-align: center; font-size: 1.2em;">Zogg</p>	2. Operational Period: Date From: 09/30/20 Date To: 10/01/20 Time From: 0700 Time To: 0700	3. Branch Division <p style="text-align: center; font-size: 1.5em;">I A</p>
---	---	---

4. Operations Personnel:		Page 1 of 2	Alpha
Operations Section Chief: Chris Waters	Night Ops: Brian Noel		
Branch Director: Rick Valles	Branch Safety:		
Division/Group Supervisor: Dennis Lange	Air Attack: Scott Brockman		

5. Resources Assigned:		** Resources Below in Bold are 12 Hour **					Hours	Reporting Location
Resource Identifier	ALS	LWD	Leader	Personnel	Request #			
STA						0700-0700	Station 50	
STA						0700-0700	Station 50	
STC SKU 9262C			COHEN, CASEY	18	E-103	0700-0700	Station 50	
STC LAC 1870C	X		CABRERA, STEVE	22	E-240	0700-0700	Station 50	
STC XSK 3201			DUNCAN, JOHNATHON	18	E-42	0700-0700	Station 50	
STC						0700-0700	Station 50	
STC						0700-0700	Station 50	
STG SHU 9240G			TAVALERO, GREGORY	33	C-40	0700-1900	Station 50	
STG SLU 9347G (CCC)			QUILLIN, WOLFGANG W	30	C-80	0700-1900	Station 50	
STG						0700-0700	Station 50	
STG						0700-0700	Station 50	
STL MMU 9428L				7	E-251	0700-0700	Station 50	
DOZ SHU 2442				2	E-15	0700-0700	Station 50	
DOZ PVT E-52 - RIDGE				2	E-52	0700-1900	Station 50	
DOZ PVT E-53 DIAMOND				2	E-53	0700-0700	Station 50	
DOZ PVT E-56 OROVILLE				2	E-56	0700-0700	Station 50	
DOZ PVT E-184 DON DAVIS			MILLER, MIKE	1	E-184	0700-0700	Station 50	
DOZ PVT E-185 Oroville			KELLY, MIKE	2	E-185	0700-0700	Station 50	

6. Work Assignments:
Mop up 100 ft. in from control lines.
Widen and improve direct line.
Construct direct line form Branch to Clear Creek.

7. Special Instructions:

8. Communications							
Name	Ch	Function	Rx Freq	Rx Tone	Tx Freq	Tx Tone	Notes
SHA CMD2	1	COMMAND	154.4300	136.5 (T4)	159.0150	123.0 (T2)	SHASTA CMD TONE 2 (BASS MT)
CDF T11	5	TACTICAL	151.4450	192.8 (T16)	151.4450	192.8 (T16)	DIV A
CALCORD	13	MEDICAL	156.0750	156.7 (T6)	156.0750	156.7 (T6)	INCIDENT WIDE
CDF T17	14	AIR TO GROUND	159.3150	192.8 (T16)	159.3150	192.8 (T16)	EMS COORDINATION
AIR GUARD	16	EMERGENCY	168.6250		168.6250	110.9 (T1)	EMERGENCY USE

9. Prepared by: Name: Kyle O'Neil RESL Signature:

ICS 204 Date/Time: 9/29/2020 2200 Personnel Count: 139

ASSIGNMENT LIST (ICS 204 WF)

CONTROLLED UNCLASSIFIED
INFORMATION//BASIC

1. Incident Name: <p style="text-align: center; font-size: 1.2em;">Zogg</p>	2. Operational Period: Date From: 09/30/20 Date To: 10/01/20 Time From: 0700 Time To: 0700	3. Branch Division <p style="text-align: center; font-size: 1.5em;">I A</p> <p style="text-align: center;">Page 2 of 2 Alpha</p>
---	---	---

4. Operations Personnel: Operations Section Chief: Chris Waters Branch Director: Rick Valles Division/Group Supervisor: Dennis Lange	Night Ops: Brian Noel Branch Safety: Air Attack: Scott Brockman
---	---

5. Resources Assigned:	** Resources Below in Bold are 12 Hour **					Hours	Reporting Location
Resource Identifier	ALS	LWD	Leader	Personnel	Request #		
DOZ PVT E-186 Oroville			KELLY, MIKE	2	E-186	0700-0700	Station 50
N/T PVT E-63 AMERICAN			REAL, VINCENT	2	E-63	0700-1900	Station 50
N/T PVT E-66 SHUMAS			SHULTS, BRETT	1	E-66	0700-1900	Station 50
N/T PVT E-71 PVT HARRIS			ZULU, JOHN	1	E-71	0700-1900	Station 50
N/T PVT E-74 TULE RIVER			GARCIA, ANTHONY	1	E-74	0700-1900	Station 50
N/T PVT E-75 BLACKCAT			CLAWSON, SCOTT	2	E-75	0700-1900	Station 50
N/T PVT E-77 HURLIMANN			HURLIMANN, FRANK	2	E-77	0700-0700	Station 50
N/T PVT E-84 DIG IT			JONES, KEN	1	E-84	0700-1900	Station 50
N/T PVT E-90 McGarr			MCGARR, DENNIS	1	E-90	0700-1900	Station 50
N/T PVT E-92 LAWERANCE			CHRISTIENSEN, CHRIS	2	E-92	0700-0700	Station 50
MAS PVT E-262 SUNRISE			CONN, KEITH	1	E-262	0700-1900	Station 50
MAS PVT E-264 MPI			JACKSON, ROB	1	E-264	0700-1900	Station 50
IEQB O-34			STRIEFF, ROB	1	O-34	0700-0700	Station 50
IEQB						0700-0700	Station 50
IEQB						0700-0700	Station 50
ALM O-179				1	O-179	0700-0700	Station 50
ALM O-180				1	O-180	0700-0700	Station 50
ALM O-209				1	O-209	0700-0700	Station 50

Work Assignments:
 Top up 100 ft. in from control lines.
 Widen and improve direct line.
 Construct direct line from Branch to Clear Creek.

Special Instructions:

Communications

Channel	Ch	Function	Rx Freq	Rx Tone	Tx Freq	Tx Tone	Notes
HA CMD2	1	COMMAND	154.4300	136.5 (T4)	159.0150	123.0 (T2)	SHASTA CMD TONE 2 (BASS MT)
DF T11	5	TACTICAL	151.4450	192.8 (T16)	151.4450	192.8 (T16)	DIV A
ALCORD	13	MEDICAL	156.0750	156.7 (T6)	156.0750	156.7 (T6)	INCIDENT WIDE
DF T17	14	AIR TO GROUND	159.3150	192.8 (T16)	159.3150	192.8 (T16)	EMS COORDINATION
IR GUARD	16	EMERGENCY	168.6250		168.6250	110.9 (T1)	EMERGENCY USE

Prepared by: Name: Kyle O'Neil RESL Signature:

ICS 204 Date/Time: 9/29/2020 2200 Personnel Count: 21

CONTROLLED UNCLASSIFIED INFORMATION//BASIC

ASSIGNMENT LIST (ICS 204 WF)

CONTROLLED UNCLASSIFIED
INFORMATION//BASIC

1. Incident Name: <p style="text-align: center; font-size: 1.2em;">Zogg</p>	2. Operational Period: Date From: 09/30/20 Date To: 10/01/20 Time From: 0700 Time To: 0700	3. Branch Division <p style="text-align: center; font-size: 1.5em;">I C</p> Page 1 of 2 Charlie
---	---	--

4. Operations Personnel:	
Operations Section Chief: Chris Waters	Night Ops: Brian Noel
Branch Director: Rick Valles	Branch Safety:
Division/Group Supervisor: S. Lowe / Jesse Winnen (T)	Air Attack: Scott Brockman

5. Resources Assigned:	** Resources Below in Bold are 12 Hour **						
Resource Identifier	ALS	LWD	Leader	Personnel	Request #	Hours	Reporting Location
STC						0700-0700	DP-3
STC						0700-0700	DP-3
ENG 246				3	E-11	0700-0700	DP-3
ENG SHU 2478						0700-0700	DP-3
ENG3 361			HAGEDON, LONNY	3	E-44	0700-1900	DP-3
ENG6 WNP 4				3	E-102	0700-1900	DP-3
STG						0700-0700	DP-3
STG						0700-0700	DP-3
STH TGU 9259H			TRIGGS, CLAYTON	1	C-43	0700-1900	DP-3
CRW PVT FRANCO			RASCH, LEO	20	C-70000	0700-1900	DP-3
CRW PVT 3B'S			MARLOW, MICHAEL	20	C-70001	0700-1900	DP-3
DOZ PVT E-57 OROVILLE				2	E-57	0700-0700	DP-3
DOZ PVT E-58 NORTHWESTERN				2	E-58	0700-0700	DP-3
DOZ PVT E-59 MILLER				2	E-59	0700-0700	DP-3
DOZ PVT E-60 NORTHWESTERN				2	E-60	0700-0700	DP-3
DOZ PVT E-182 Don Davis			BOUDRO, STEVE	2	E-182	0700-0700	DP-3
DOZ PVT E-233 CARLTON			CARLTON, JAMES	1	E-233	0700-0700	DP-3
DOZ						0700-0700	DP-3

6. Work Assignments:
Mop up 100 ft. in from control lines.
Continue to construct control lines North of Placer Road.

7. Special Instructions:

8. Communications

Name	Ch	Function	Rx Freq	Rx Tone	Tx Freq	Tx Tone	Notes
SHA CMD2	1	COMMAND	154.4300	136.5 (T4)	159.0150	123.0 (T2)	SHASTA CMD TONE 2 (BASS MT)
VFIRE 22	6	TACTICAL	154.2650	156.7 (T6)	154.2650	156.7 (T6)	DIV C & ONO STAGING
CALCORD	13	MEDICAL	156.0750	156.7 (T6)	156.0750	156.7 (T6)	INCIDENT WIDE
CDF T17	14	AIR TO GROUND	159.3150	192.8 (T16)	159.3150	192.8 (T16)	EMS COORDINATION
AIR GUARD	16	EMERGENCY	168.6250		168.6250	110.9 (T1)	EMERGENCY USE

9. Prepared by: Name:	Kyle O'Neil	RESL	Signature:
ICS 204	Date/Time: 9/29/2020 2200		Personnel Count: 61

ASSIGNMENT LIST (ICS 204 WF)

CONTROLLED UNCLASSIFIED
INFORMATION//BASIC

1. Incident Name: Zogg	2. Operational Period: Date From: 09/30/20 Date To: 10/01/20 Time From: 0700 Time To: 0700	3. Branch: I Division: C Page 2 of 2 Charlie
----------------------------------	--	---

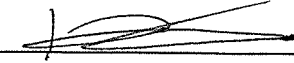
4. Operations Personnel:	
Operations Section Chief: Chris Waters	Night Ops: Brian Noel
Branch Director: Rick Valles	Branch Safety:
Division/Group Supervisor: S. Lowe / Jesse Winnen (T)	Air Attack: Scott Brockman

Resources Assigned:		** Resources Below in Bold are 12 Hour **					Hours	Reporting Location
Resource Identifier	ALS	LWD	Leader	Personnel	Request #			
OZ						0700-0700	DP-3	
OZ						0700-0700	DP-3	
/T PVT E-80 WILLMORE			BRUNNEMER, JEFF	1	E-80	0700-1900	DP-3	
/T PVT E-81 DOCS			VAIN, JOE	1	E-81	0700-1900	DP-3	
/T PVT E-86 DARRAH			KAUNDART, DAVID	1	E-86	0700-1900	DP-3	

Work Assignments:
 Dig up 100 ft. in from control lines.
 Continue to construct control lines North of Placer Road.

Special Instructions:

Communications							
Name	Ch	Function	Rx Freq	Rx Tone	Tx Freq	Tx Tone	Notes
IA CMD2	1	COMMAND	154.4300	136.5 (T4)	159.0150	123.0 (T2)	SHASTA CMD TONE 2 (BASS MT)
IRE 22	6	TACTICAL	154.2650	156.7 (T6)	154.2650	156.7 (T6)	DIV C & ONO STAGING
ILCORD	13	MEDICAL	156.0750	156.7 (T6)	156.0750	156.7 (T6)	INCIDENT WIDE
IF T17	14	AIR TO GROUND	159.3150	192.8 (T16)	159.3150	192.8 (T16)	EMS COORDINATION
IR GUARD	16	EMERGENCY	168.6250		168.6250	110.9 (T1)	EMERGENCY USE

Prepared by: **Name: Kyle O'Neil** RESL Signature: 

Date/Time: 9/29/2020 2200 Personnel Count: 3

ASSIGNMENT LIST (ICS 204 WF)

CONTROLLED UNCLASSIFIED
INFORMATION//BASIC

1. Incident Name: <p style="text-align: center; font-size: 1.2em;">Zogg</p>	2. Operational Period: Date From: 09/30/20 Date To: 10/01/20 Time From: 0700 Time To: 0700	3. Branch Division <p style="text-align: center; font-size: 1.5em;">II E</p> Page 1 of 1 Echo
---	---	---

4. Operations Personnel:	
Operations Section Chief: Chris Waters	Night Ops: Brian Noel
Branch Director: Magnus Jonsson	Branch Safety:
Division/Group Supervisor: Larry Turman (STL 9260C)	Air Attack: Scott Brockman

5. Resources Assigned:		** Resources Below in Bold are 12 Hour **					
Resource Identifier	ALS	LWD	Leader	Personnel	Request #	Hours	Reporting Location
STC SKU 9260C			TURMAN, LARRY	18	E-3	0700-0700	DP-4
STC						0700-0700	DP-4
STG RCC 9273G			CHOLICO, ALEJANDRO	33	C-1	0700-1900	DP-4
STG						0700-0700	DP-4
STG						0700-0700	DP-4
STH 9225H						0700-1900	DP-4
DOZ HUU 1240			WOHLERS, CHRIS	3	E-31	0700-0700	DP-4
DOZ HUU 1242			SWEARINGER, LEONARD	3	E-39	0700-0700	DP-4
W/T PVT E-64 WILLMORE			ANDERSON, MICHELLE	1	E-64	0700-0700	DP-4
W/T PVT E-69 HARRIS			JOHNSON, BRUCE	1	E-69	0700-1900	DP-4
W/T PVT E-83 DIG IT			HEWITT, TERRY	1	E-83	0700-1900	DP-4

6. Work Assignments:
Mop up 200 ft. in from control lines.
Hold and improve control lines.

7. Special Instructions:

8. Communications							
Name	Ch	Function	Rx Freq	Rx Tone	Tx Freq	Tx Tone	Notes
SHA CMD2	1	COMMAND	154.4300	136.5 (T4)	159.0150	123.0 (T2)	SHASTA CMD TONE 2 (BASS MT)
VFIRE 23	7	TACTICAL	154.2950	156.7 (T6)	154.2950	156.7 (T6)	DIV E
CALCORD	13	MEDICAL	156.0750	156.7 (T6)	156.0750	156.7 (T6)	INCIDENT WIDE
CDF T17	14	AIR TO GROUND	159.3150	192.8 (T16)	159.3150	192.8 (T16)	EMS COORDINATION
AIR GUARD	16	EMERGENCY	168.6250		168.6250	110.9 (T1)	EMERGENCY USE

9. Prepared by: Name:	Kyle O'Neil	RESL	Signature:
ICS 204	Date/Time: 9/29/2020	2200	Personnel Count: 60

ASSIGNMENT LIST (ICS 204 WF)

CONTROLLED UNCLASSIFIED
INFORMATION//BASIC

1. Incident Name: <p style="text-align: center; font-size: 1.2em;">Zogg</p>	2. Operational Period: Date From: 09/30/20 Date To: 10/01/20 Time From: 0700 Time To: 0700	3. Branch Division <p style="text-align: center; font-size: 1.5em;">II F</p>
---	---	--

4. Operations Personnel:		Page 1 of 1 Foxtrot
Operations Section Chief: Chris Waters	Night Ops: Brian Noel	
Branch Director: Magnus Jonsson	Branch Safety:	
Division/Group Supervisor: Mark Pimentel (STL 9420C)	Air Attack: Scott Brockman	

5. Resources Assigned:	** Resources Below in Bold are 12 Hour **							
Resource Identifier	ALS	LWD	Leader	Personnel	Request #	Hours	Reporting Location	
STC MMU 9420C			PIMENTEL, MARK	16	E-341	0700-0700	ICP	
STC XYU 3300C			HEGGSTROM, KYLE	18	E-121	0700-0700	ICP	
STC						0700-0700	ICP	
STC						0700-0700	ICP	
STG TGU 9257G			ZUCKERMAN, ANDY	31	C-79	0700-1900	ICP	
CRW SHU FUELS 2449			LAMKIN, SHANE	33	C-3	0700-1900	ICP	
CRW2IA SKU 1				16	C-34	0700-1900	ICP	
CRW HUU Fortuna Crew 1			PEEBLES, EDWARD	16	C-37	0700-1900	ICP	
CRW HUU1			DAVI, JASON	16	C-44	0700-1900	ICP	
DOZ TGU 2542			GIBSON, BLAINE	2	E-41	0700-0700	ICP	
DOZ PVT E-38 SCHNETZER					E-38	0700-0700	ICP	
DOZ PVT E-55 GILES EXC				2	E-55	0700-0700	ICP	
VT WEA 2141				2	E-50	0700-1900	ICP	
VT OES 31				2	E-51	0700-0700	ICP	
VT PVT E-67 Lucky Bucks			EVANS, NOEMI	1	E-67	0700-0700	ICP	
VT PVT E-68 BLACKNIGHT			MARTINEZ, CHRISTIAN	2	E-68	0700-1900	ICP	
EMP GALE O-127			GALE, TRISTAN J	1	O-127	0700-0700	ICP	

Work Assignments:
 Prepare for firing and continue firing as needed. Protect infrastructure.
 Hold fire within established control lines.

Special Instructions:

Communications

Name	Ch	Function	Rx Freq	Rx Tone	Tx Freq	Tx Tone	Notes
HA CMD2	1	COMMAND	154.4300	136.5 (T4)	159.0150	123.0 (T2)	SHASTA CMD TONE 2 (BASS MT)
FIRE 24	8	TACTICAL	154.2725	156.7 (T6)	154.2725	156.7 (T6)	DIV F
ALCORD	13	MEDICAL	156.0750	156.7 (T6)	156.0750	156.7 (T6)	INCIDENT WIDE
DF T17	14	AIR TO GROUND	159.3150	192.8 (T16)	159.3150	192.8 (T16)	EMS COORDINATION
IR GUARD	16	EMERGENCY	168.6250		168.6250	110.9 (T1)	EMERGENCY USE

Prepared by: Name: Kyle O'Neil **RESL** **Signature:**

ICS 204 **Date/Time:** 9/29/2020 2200 **Personnel Count:** 158

CONTROLLED UNCLASSIFIED INFORMATION//BASIC

ASSIGNMENT LIST (ICS 204 WF)

CONTROLLED UNCLASSIFIED
INFORMATION//BASIC

1. Incident Name: <p style="text-align: center;">Zogg</p>	2. Operational Period: Date From: 09/30/20 Date To: 10/01/20 Time From: 0700 Time To: 0700	3. Branch Division <p style="text-align: center;">II H</p> Page 1 of 1 Hotel
--	---	--

4. Operations Personnel:	
Operations Section Chief: Chris Waters	Night Ops: Brian Noel
Branch Director: Magnus Jonsson	Branch Safety:
Division/Group Supervisor: Matt Troehler (STL 9251C)	Air Attack: Scott Brockman

5. Resources Assigned:		** Resources Below in Bold are 12 Hour **					
Resource Identifier	ALS	LWD	Leader	Personnel	Request #	Hours	Reporting Location
STC TGU 9251C			TROEHLER, MATTHEW	18	E-26	0700-0700	ICP
STC						0700-0700	ICP
STC						0700-0700	ICP
STG						0700-0700	ICP
STG						0700-0700	ICP
STG						0700-0700	ICP
DOZ PVT E-54 THOMPSON				2	E-54	0700-0700	ICP
DOZ PVT E-179 MILLER			MILLER, HAROLD	4	E-179	0700-0700	ICP
W/T PVT E-85 RDL			LEAVERTON, RYAN	1	E-85	0700-1900	ICP
W/T PVT E-87 DARRAH			CRETTON, BOB	1	E-87	0700-1900	ICP
W/T PVT E-88 KITE			GINTER, DEREK	2	E-88	0700-0700	ICP

6. Work Assignments:
 Hold fire within established control lines.
 Construct control lines as directly as possible.

7. Special Instructions:

8. Communications							
Name	Ch	Function	Rx Freq	Rx Tone	Tx Freq	Tx Tone	Notes
SHA CMD2	1	COMMAND	154.4300	136.5 (T4)	159.0150	123.0 (T2)	SHASTA CMD TONE 2 (BASS MT)
CDF T29	9	TACTICAL	151.3475	192.8 (T16)	151.3475	192.8 (T16)	DIV H
CALCORD	13	MEDICAL	156.0750	156.7 (T6)	156.0750	156.7 (T6)	INCIDENT WIDE
CDF T17	14	AIR TO GROUND	159.3150	192.8 (T16)	159.3150	192.8 (T16)	EMS COORDINATION
AIR GUARD	16	EMERGENCY	168.6250		168.6250	110.9 (T1)	EMERGENCY USE

9. Prepared by: Name: Kyle O'Neil RESL Signature:
ICS 204 Date/Time: 9/29/2020 2200 Personnel Count: 28

ASSIGNMENT LIST (ICS 204 WF)

CONTROLLED UNCLASSIFIED
INFORMATION/BASIC

1. Incident Name: <p style="text-align: center; font-size: 1.2em;">Zogg</p>	2. Operational Period: Date From: 09/30/20 Date To: 10/01/20 Time From: 0700 Time To: 0700	3. Branch Division <p style="text-align: center; font-size: 1.5em;">V M</p> Page 1 of 1 Mike
---	---	--

Operations Personnel:	
Operations Section Chief: Chris Waters	Night Ops: Brian Noel
Branch Director: Bill Lopez	Branch Safety: Mike Camba (12hr)
Division/Group Supervisor:	Air Attack: Scott Brockman

Resources Assigned:		** Resources Below in Bold are 12 Hour **					
Resource Identifier	ALS	LWD	Leader	Personnel	Request #	Hours	Reporting Location
NG 73				3	E-4	0700-0700	ICP
NG 541						0700-0700	ICP
NG 552				3	E-14	0700-0700	ICP
NG RDN25							ICP
NG RDN35							ICP
/T PVT E-70 PVT HARRIS			EILER, GARY	1	E-70	0700-1900	ICP

Work Assignments:
Perform Tactical Patrol.

Special Instructions:

Communications							
Time	Ch	Function	Rx Freq	Rx Tone	Tx Freq	Tx Tone	Notes
IA CMD2	1	COMMAND	154.4300	136.5 (T4)	159.0150	123.0 (T2)	SHASTA CMD TONE 2 (BASS MT)
IRE 26	10	TACTICAL	154.3025	156.7 (T6)	154.3025	156.7 (T6)	DIV M
ALCORD	13	MEDICAL	156.0750	156.7 (T6)	156.0750	156.7 (T6)	INCIDENT WIDE
AF T17	14	AIR TO GROUND	159.3150	192.8 (T16)	159.3150	192.8 (T16)	EMS COORDINATION
R GUARD	16	EMERGENCY	168.6250		168.6250	110.9 (T1)	EMERGENCY USE

Prepared by: Name: Kyle O'Neil RESL Signature:

§ 204 Date/Time: 9/29/2020 2200 Personnel Count: 7

CONTROLLED UNCLASSIFIED INFORMATION/BASIC

ASSIGNMENT LIST (ICS 204 WF)

CONTROLLED UNCLASSIFIED
INFORMATION//BASIC

1. Incident Name: <p style="text-align: center; font-size: 1.2em;">Zogg</p>	2. Operational Period: Date From: 09/30/20 Date To: 10/01/20 Time From: 0700 Time To: 0700	3. Branch Division <p style="text-align: center; font-size: 1.5em;">V P</p>
---	---	---

4. Operations Personnel:		Page 1 of 1	Papa
Operations Section Chief: Chris Waters	Night Ops: Brian Noel		
Branch Director: Bill Lopez	Branch Safety: Mike Camba (12hr)		
Division/Group Supervisor: Robert Veverka	Air Attack: Scott Brockman		

5. Resources Assigned:		** Resources Below in Bold are 12 Hour **					
Resource Identifier	ALS	LWD	Leader	Personnel	Request #	Hours	Reporting Location
STC LMU 9227C			SALTZMAN, JOHN	18	E-25	0700-0700	ICP
ENG3 2496				3	E-10	0700-0700	ICP
STG TGU 9252G			CORNING, RHETT	32	C-46	0700-1900	ICP
STG						0700-0700	ICP
STG						0700-0700	ICP
STL LMU 9220L			GRENDAHL, SCOTT	7	E-1	0700-0700	ICP
DOZ NEU 2346			MINOR, DEVERY L	3	E-40	0700-0700	ICP
DOZ PVT E-61 DEUCES				2	E-61	0700-0700	ICP
DOZ PVT E-181 UB DOZING			BOGGS, DYLAN	3	E-181	0700-0700	ICP
DOZ PVT E-183 DON D DAVIS			MATSON, JIM	2	E-183	0700-0700	ICP
DOZ						0700-0700	ICP
W/T PVT E-62 CLP FIRE			PRESIDIO, LYNN	1	E-62	0700-1900	ICP
W/T PVT E-65 GS SHUMAS			SHULTS, JUSTIN	2	E-65	0700-1900	ICP

6. Work Assignments:
Mop up 300 ft from control lines.
Improve direct fire line.

7. Special Instructions:

8. Communications							
Name	Ch	Function	Rx Freq	Rx Tone	Tx Freq	Tx Tone	Notes
SHA CMD2	1	COMMAND	154.4300	136.5 (T4)	159.0150	123.0 (T2)	SHASTA CMD TONE 2 (BASS MT)
CDF T27	11	TACTICAL	159.3075	192.8 (T16)	159.3075	192.8 (T16)	DIV P
CALCORD	13	MEDICAL	156.0750	156.7 (T6)	156.0750	156.7 (T6)	INCIDENT WIDE
CDF T17	14	AIR TO GROUND	159.3150	192.8 (T16)	159.3150	192.8 (T16)	EMS COORDINATION
AIR GUARD	16	EMERGENCY	168.6250		168.6250	110.9 (T1)	EMERGENCY USE

9. Prepared by: Name: Kyle O'Neil RESL Signature:

ICS 204 Date/Time: 9/29/2020 2200 Personnel Count: 73

ASSIGNMENT LIST (ICS 204 WF)

CONTROLLED UNCLASSIFIED
INFORMATION//BASIC

1. Incident Name: <p style="text-align: center; font-size: 1.2em;">Zogg</p>	2. Operational Period: Date From: 09/30/20 Date To: 10/01/20 Time From: 0700 Time To: 0700	3. Branch Division <p style="text-align: center; font-size: 1.5em;">V Y</p> <p style="text-align: center;">Page 1 of 1 Yankee</p>
---	---	--

4. Operations Personnel: Operations Section Chief: Chris Waters Branch Director: Bill Lopez Division/Group Supervisor: Brian Gibilisco / Alex Elward (T)	Night Ops: Brian Noel Branch Safety: Mike Camba (12hr) Air Attack: Scott Brockman
---	--

5. Resources Assigned:		** Resources Below in Bold are 12 Hour **					
Resource Identifier	ALS	LWD	Leader	Personnel	Request #	Hours	Reporting Location
STC XLS 3075C			HITCHCOCK, STEVE	18	E-126	0700-0700	ICP
STC						0700-0700	ICP
ENG 533				3	E-13	0700-1900	ICP
STG						0700-0700	ICP
STG						0700-0700	ICP
STL KRN 9360L			MIKE GRISEDALE	1	E-250	0700-1900	ICP
STL MVU 9334L			WILL, GARY C	6	E-343	0700-0700	ICP
DOZ SKU 2640			RUSH, KEN	1	E-30	0700-0700	ICP
DOZ SKU 2643			TUPMAN, LANCE D	2	E-29	0700-0700	ICP
DOZ PVT E-16 PVT STRIKEFIRST			CHAVEZ, MIKE	2	E-16	0700-0700	ICP
DOZ PVT E-180 COCKSHORE			NETTLES, BUCK	3	E-180	0700-0700	ICP
DOZ PVT E-187 PRODUMP			NORTON, TRACY	2	E-187	0700-0700	ICP
DOZ PVT E-188 PRODUMP			OWA, CALEB	1	E-188	0700-0700	ICP
V/T PVT E-78 WELLS			WELLS, JEFF	2	E-78	0700-1900	ICP
V/T PVT E-82 DOCS			WILSON, TIM	1	E-82	0700-1900	ICP

Work Assignments:
 Hold and improve control lines.
 Construct control lines as directly as possible.

Special Instructions:

Communications							
Name	Ch	Function	Rx Freq	Rx Tone	Tx Freq	Tx Tone	Notes
HA CMD2	1	COMMAND	154.4300	136.5 (T4)	159.0150	123.0 (T2)	SHASTA CMD TONE 2 (BASS MT)
DF T28	12	TACTICAL	151.1825	192.8 (T16)	151.1825	192.8 (T16)	DIV Y
ALCORD	13	MEDICAL	156.0750	156.7 (T6)	156.0750	156.7 (T6)	INCIDENT WIDE
DF T17	14	AIR TO GROUND	159.3150	192.8 (T16)	159.3150	192.8 (T16)	EMS COORDINATION
R GUARD	16	EMERGENCY	168.6250		168.6250	110.9 (T1)	EMERGENCY USE

Prepared by: Name:	Kyle O'Neil	RESL	Signature:
S 204	Date/Time: 9/29/2020 2200	Personnel Count: 42	

AIR OPERATIONS SUMMARY ICS-220

Incident Name and Incident Number ZOOG CASHU 009978	Sunrise 7:03	Startup 7:33	Cutoff 1824	Sunset 1854	Time Prepared 2000	Date Prepared Tuesday, September 29, 2020	Prepared By M Deacon	
General Remarks, Safety Notes, Hazards, Air Operations Special Equipment, etc. TRACK ALL DIPSITE LOCATIONS / NUMBER OF DIPS / GALLONS TAKEN. TRACK ALL DROP LOCATIONS / NUMBER OF DROPS / GALLONS DROPPED ALL GPS DATA TO BE COLLECTED IN DEGREES, MINUTES, DECIMAL MINUTES, FORMAT. AVOID Aerial Application of Retardant / Foam / Agent within 300' of Waterways, Bodies of Water, etc. If Retardant / Foam / Agent is Dropped Within These Areas Immediately Notify the AOBd and Provide the Following Information: Lat / Long, Estimated Number of Gallons and a Map Detailing The Area. Sky Ranch Helibase - 7400 State Hwy 273 - 5 Ton Weight Limit on Bridge off Hwy 273					Shutdown 1924		Operational Period - Date Wednesday, September 30, 2020	Operational Period - Time 0800-0800
Helibase Information Name Sky Ranch Latitude 40 29.966 Longitude 122 22.753					TFR Information Request # A-57 Radius: NM Altitude: MSL Centerpoint: Lat Long NOTAMS: See FAA Frequency 127.0250 http://tr.faa.gov/trf2/list.html		Rescue Ship Information Name Day Night Phone Comm Plan Make/Model UH1H Location Sky Ranch HB Request Procedure for These Aircraft: Command Freq to Helibase See Medical Plan For Additional Info	

Frequencies	RX	Tone	TX	Tone	AM / FM	Position	Name	Phone	Trainee Name	Phone
AIR TACTICS	166.9375		166.9375		FM	AOBD	Mike Deacon	(530) 708-2716		
AIR / AIR Rotary Wing	127.0250		127.0250		AM	ASGS	Brad Idol	(805) 338-4715		
AIR / AIR - Briefing	133.6750		133.5750		AM	HEBM	Phil Michael	(916) 221-2071		
AIR / GROUND - Command	159.3150	192.8	159.3150	192.8	FM	ATGS	Scott Brockman	RAAB		
AIR / GROUND - Tactical					FM	HLCO	Chris Wilson	530-448-2408		
COMMAND					FM	HLCO	Rudy Yriaguez	(530) 515-4440		
TOLC	123.0250				AM					
DECK	163.1000				FM					
CALCORD - MEDICAL	156.0750	156.7 (6)	156.0750	156.7 (6)	FM					
AIRGUARD - Emergency Only	168.6250		168.6250	110.9 (1)	FM					

HELICOPTERS (Use page 2 if Needed)

FAA #	Type	Make/Model	Helibase	Avail	Start	Remarks	FAA #	Type	Make/Model	Helibase	Avail	Start	Remarks
G861	I	UH-60	Sky Ranch	700	800	Bucket							
G862	I	UH-60	Sky Ranch	700	800	Bucket							
G863	I	UH-60	Sky Ranch	700	800	Bucket							
MGM	I	KMAX	Sky Ranch	700	800	Bucket							
802PJ	I	UH-60	Sky Ranch	800	900	LL Bucket							
35S	I	S-64	Sky Ranch	700	800	Tank							
CNU	II	BELL 212	Sky Ranch	700	800	LL Bucket							PAX
C102	II	UH1H	Sky Ranch	700	800	Bucket							PAX
C902	II	UH1H	Sky Ranch	TBD	TBD	Rescue							
50HA	III	AS350 B3	Sky Ranch	700	800	Recon							
26GM	III	B206L4	Sky Ranch	700	800	Recon							
7XL	III	AS350 B3	Sky Ranch	TBD	TBD	HLCO							
57Z	III	B206L4	Sky Ranch	700	800	HLCO							

FIXED WING (Use Page 2 if Needed)

FAA #	Type	Make/Model	Base	Avail	Start	Remarks	FAA #	Type	Make/Model	Base	Avail	Start	Remarks
N77HS		AC90	MCC	1900	2000	Night AA							

FIXED WING (Use Page 2 if Needed)

FAA #	Type	Make/Model	Base	Avail	Start	Remarks

MEDICAL PLAN (ICS 206)

1. Incident Name: Zogg	2. Operational Period: Date From: 9/30/20 Date To: 10/1/20 Time From: 0700 Time To: 0700
----------------------------------	---

3. Medical Aid Stations:			
Name	Location	Contact Number/Freq	Paramedics
Cal Mat	Anderson Fairgrounds	408-887-0744	Yes

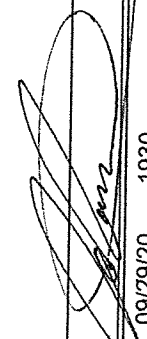
4. Transportation (indicate air or ground):			
Ambulance Service	Location	Contact Number	Level of Service
Medic 117	DP-3	Zogg Communications	ALS
AMR 255	DP-2	Zogg Communications	ALS
Cal Fire C-102 (Day Hoist)	Sky Ranch Helibase	Zogg Communications	BLS
Guard 821 (24HR Hoist)	Redding Airport	Redding ECC	ALS
AMR	4451 Caterpillar Rd #1.Redding, CA 96003	Redding ECC	ALS
Mercy Diginty	2175 Rosaline Ave. Redding, CA 96001	Redding ECC	ALS
Reach Air	1524 East St. Redding, CA 96001	Redding ECC	ALS
PHI Air	5900 Old Oregon Trail. Redding, CA 96002	Redding ECC	ALS
CHP 14 & 18 (Hoist)	2651 Gold St. Redding, CA 96001	Redding ECC	ALS

5. Hospitals:							
Hospital Name	Address,	Contact Number(s)/ Frequency	Travel Time		Trauma Center	Burn Center	Helipad
	Lat & Long		Air	Ground			
Shasta Regional Medical Center	1100 Butte St, Redding, CA 96001	(530) 244-5400	10 Min	30 Min		<input type="checkbox"/>	<input checked="" type="checkbox"/>
Mercy Medical Center	2175 Rosaline Ave. Redding, CA 96001	(530) 225-7201	10 Min	30 Min	Level 2	<input type="checkbox"/>	<input checked="" type="checkbox"/>
Enloe Medical Center	1531 Esplanade, Chico, CA 95926	(530) 332-7300	25 Min	90 Min	Level 2	<input type="checkbox"/>	<input checked="" type="checkbox"/>
UC Davis Medical Center	2315 Stockton Blvd, Sacramento, CA 95817	(916) 734-2011	1.25 HR	3.5 HR	Level 1	<input checked="" type="checkbox"/>	<input checked="" type="checkbox"/>

6. Special Medical Emergency Procedures	
<p>Line Emergency Crew Supervisor will contact Division Supervisor with patient complaint/condition and location.</p> <p>- Division Group Supervisor Contacts:</p> <ol style="list-style-type: none"> 1. Closest EMS resource 2. Communications Unit <p>- Communications Unit Contacts:</p> <ol style="list-style-type: none"> 1. Ground or Air ambulance as requested. 2. Operations 3. Safety 4. Medical Unit <p>- Division Supervisor or designee will serve as point of contact and run medical emergency on assigned channel.</p> <ol style="list-style-type: none"> 1. A pre-assigned tactical frequency (i.e. CALCORD) should be used for IWI and only for duration of the emergency. <p>- Communications Unit will clear the Command channel for emergency traffic as needed for duration of the need.</p> <p>Camp Emergency Contact Medical Unit with patient complaint/condition and location. Medical staff will respond to stabilize the patient.</p> <p>- Medical Unit contacts</p> <ol style="list-style-type: none"> 1. Communications 2. Safety 3. Logistics 4. Operations 5. Crew Supervisor 6. Comp/Claims 	<p>Injury Reporting Procedures</p> <p>Nature of Injury: _____ Location of Patient: _____ Point of Contact: _____ Transportation Requested by: Air _____ Ground _____ Point of Pick-Up: _____ Lat: _____ Long: _____ Patient Unit ID: _____ Is an EMT with Patient: Yes _____ No _____ Age: _____ Sex: Male _____ Female _____</p> <p>All Emergencies - Secure the area and identified witnesses for later investigation. Keep accurate log of events.</p>

Check box if aviation assets are utilized for rescue. If assets are used, coordinate with Air Operations.

7. Prepared by (Medical Unit Leader):	Justin VanderHulst	Signature:
8. Approved by (Safety Officer):	Chad Thompson	Signature:

1. Incident Name:		2. Date/Time Prepared		3. Operational Period:					
Zogg Incident Channels		Date: 09/29/2020	Date From: 09/30/20	Date To: 10/01/20					
4. Communications		Time: 1930	Time From: 0700	Time To: 0700					
Ch#	Function	Name	Assigned To	Rx Freq	Rx Tone	Tx Freq	Tx Tone	Notes	
1	COMMAND	SHA CMD2	INCIDENT WIDE	154.4300	136.5 (T4)	159.0150	123.0 (T2)	SHASTA CMD TONE 2 (BASS MT)	
2	COMMAND	SHA CMD4	INCIDENT WIDE	154.4300	136.5 (T4)	159.0150	136.5 (T4)	SHASTA CMD TONE 4 (INSKIP)	
3	COMMAND	CDF C7	BRANCH II DIV F, DIV H	151.4600	103.5 (T8)	159.3900	110.9 (T1)	DIV F & DIV H RESOURCES (TUNNER MT)	
4									
5	TACTICAL	CDF T11	BRANCH I DIV A	151.4450	192.8 (T16)	151.4450	192.8 (T16)	DIV A	
6	TACTICAL	VFIRE 22	BRANCH I DIV C, STAGING	154.2650	156.7 (T6)	154.2650	156.7 (T6)	DIV C & ONO STAGING	
7	TACTICAL	VFIRE 23	BRANCH II, DIV E	154.2950	156.7 (T6)	154.2950	156.7 (T6)	DIV E	
8	TACTICAL	VFIRE 24	BRANCH II, DIV F	154.2725	156.7 (T6)	154.2725	156.7 (T6)	DIV F	
9	TACTICAL	CDF T29	BRANCH II, DIV H	151.3475	192.8 (T16)	151.3475	192.8 (T16)	DIV H	
10	TACTICAL	VFIRE 26	BRANCH V, DIV M	154.3025	156.7 (T6)	154.3025	156.7 (T6)	DIV M	
11	TACTICAL	CDF T27	BRANCH V, DIV P	159.3075	192.8 (T16)	159.3075	192.8 (T16)	DIV P	
12	TACTICAL	CDF T28	BRANCH V, DIV Y	151.1825	192.8 (T16)	151.1825	192.8 (T16)	DIV Y	
13	MEDICAL	CALCORD	INCIDENT WIDE	156.0750	156.7 (T6)	156.0750	156.7 (T6)	INCIDENT WIDE	
14	AIR TO GROUND	CDF T17	INCIDENT WIDE	159.3150	192.8 (T16)	159.3150	192.8 (T16)	EMS COORDINATION	
15									
16	EMERGENCY	AIR GUARD	INCIDENT WIDE	168.6250		168.6250	110.9 (T1)	EMERGENCY USE	
17									
18									
19									
20	EMERGENCY	AIR GUARD	INCIDENT WIDE	168.6250		168.6250	110.9 (T1)	EMERGENCY USE	
5. Special Instructions									
6. Prepared by (Communications Unit Leader): Name:									
ICS 205 - CONTROLLED UNCLASSIFIED INFORMATION/BASIC									
								Signature: 	
								Date/Time: 09/29/20 1930	

FIRING OPERATION CHECKLIST

Location: _____

Date: _____ Time: _____

Firing Supervisor _____

1. Personnel Briefing

- Objectives
- Conditions (fire environment)
- Resource assignments identified
 - Firing personnel
 - Holding forces
 - Lookouts
- Ignition plan/sequence
- Communication Plan
- Contingency Plan
- Safety issues

2. Go / No-Go

- All personnel briefed
- Weather forecast reviewed
- Resources in place
- Lookouts posted as needed
- Anchor and termination firing points identified
- Communications systems in place
- Fire behavior forecast reviewed
- Escape routes and safety zones established and made known
- Adjoining forces/Air Attack notified

3. Approval Prior To Firing

- Division Supervisor
- Branch Director
- Operations

4. Other Notifications

- Other: _____
- Other: _____

Attach Firing Operations Checklist to ICS-214

ZOGG INCIDENT FINANCE MESSAGE

- **All Hired Equipment resources be sure to check in with the TIME Unit in the Fusaro Building. Please have your FULL contract**
- **Comp/Claims and Procurement are also in the Fusaro Building. See contacts below**
- **All Federal & private VIPER hired resources, use the virtual time keeping processes and send your documents to R5.CalFire.Support@firenet.gov**
- **Fuel prices for wet hired equipment will be charged at
5.00 diesel and 5.00 gas**

COMP/CLAIMS – Cesar Nerey 925-872-8559

TIME – Micah McConnell 530-635-7269

PROC – Josh Shifrin 310-487-9145



ZOGG FIRE PUBLIC INFORMATION



Incident Information Line: 211 or 1-855-211-7822

Email pictures to: zoggfire2020@gmail.com

MEDIA: California State Penal Code Section 409.5(d) allows the news media to enter scenes of disaster, riot, or civil disturbance. Properly identified members of the news media should not be restricted from entering the locations specified within the code, even if the area presents a danger to them. Media members should be advised of the nature of possible danger. Members of the media do not have the right to access crime scenes or any area where their presence may interfere with incident operations, mitigation or evidence collection. The media may only access private property with the property owner's permission. Fire personnel cannot provide members of the media with authorization to enter private property. If approached and questioned by the media and/or the public, talk about your assignment or task at hand. If need be, direct the questioning party to the incident PIO. Do not speculate or give opinions There is no such thing as an "off the record" comment.

CAL FIRE SOCIAL MEDIA POLICY (Social Media 0691): Social Media is increasingly being used by public agencies and the media as well as the public. This form of communication continues to grow rapidly in order to supply the public's desire for instant information gratification. All personnel assigned to a CAL FIRE incident will adhere to the CAL FIRE Social Media Policy. Further information about the CAL FIRE Social Media Policy can be obtained from the Information Officer. If you are uncertain, please ask.

Do not post:

- Inappropriate information, pictures or videos. Opinions regarding the incident, policy or endorsements of any kind.

PICTURES AND VIDEO OF INCIDENT: We are in a new era of media. Media no longer means the news/broadcast industry but now refers to anyone that has the capability to shoot video and or photographs and post them onto social media in a matter of minutes. Unfortunately, we have seen some instances of video or photographs that have depicted unsafe, unprofessional or embarrassing circumstances which are a serious breach of ethics. When this happens, it reflects poorly on all that are attached to this incident. Posting an inappropriate video, photo or blog comment could have unwanted effects. It may be unsafe to shoot photos or video and a firefighter who is concentrating on a camera can't be looking up, down and all around.

LOST AND FOUND: The Information staff will manage Lost and Found items for the incident. If you have lost an item, leave your contact information and what you have lost at the Information trailer. If you have found an item on the incident, bring the item to the Information trailer.

MAIL SERVICE: The Information staff will assist you in mailing and receiving letters and packages. **Shasta District Fair and Event Center 1890 Briggs St, Anderson CA. 96007**

_____ acres _____ %

ATTENTION:

All Line orders MUST be
submitted through Zogg
Communications, on Command
or by phone

(530) 410 7669

Line orders requested after
1900 will be delivered the
following day

TRAINING MESSAGE

The Training Specialist is now on the incident.

ALL ASSIGNED TRAINEES

working on position task books will need to register with the Incident Training Specialist in order to receive proper credit for your assignment.

The Training Specialist is available immediately following the morning Operations Briefing.

TRAINING SPECIALIST

Claudia Soiza

Cell-(949)632-7813



ZOGG INCIDENT

Incident Trainee/Trainer Data Form
CA-SHU-009978

Training Specialist: Claudia Soiza 949.632.7813

- > All Incident trainees, including those on Firefighting Modules at your earliest opportunity complete this form and see the Training Specialist.
- > Prior to or as you process through DEMOB, remember to close your training package. To close your training package, bring: 1) A performance rating from your trainer. (ICS 225)
2) Your task book that has as many entries as possible by your Trainer.

Trainee Data

Trainee Name: _____ ICS Trainee Position: _____

Request # (A,C,E, or O): _____ Agency Designator (Ex. CA-RRU): _____

Ordered as Trainee? Y N Priority Trainee ___ Email: _____

Date Assigned: _____ Cell / Contact # While on Incident: _____

Training Records Mailed To: (Fire Chief, Training Officer):

Name: _____ Email: _____ Title: _____

Name of Agency/Unit: _____

Agency/Unit Address: _____

City: _____ State: _____ Zip Code: _____ Phone: _____

Trainee Prerequisites

1. Possesses valid Qualification Card or agency certification card? _____ Yes _____ No

2. Trainee has current position task book issued by home unit? _____ Yes _____ No

Current Task Book Progress (Circle) 0% 25% 50% 75% 90%

Priority Open Task in PTB (What do you need to accomplish on this incident?)

Trainer/Evaluator Data

Trainer / Evaluator Name: _____ ICS position on fire: _____

Home Unit: _____ Agency Designator (Ex CA-RRU): _____

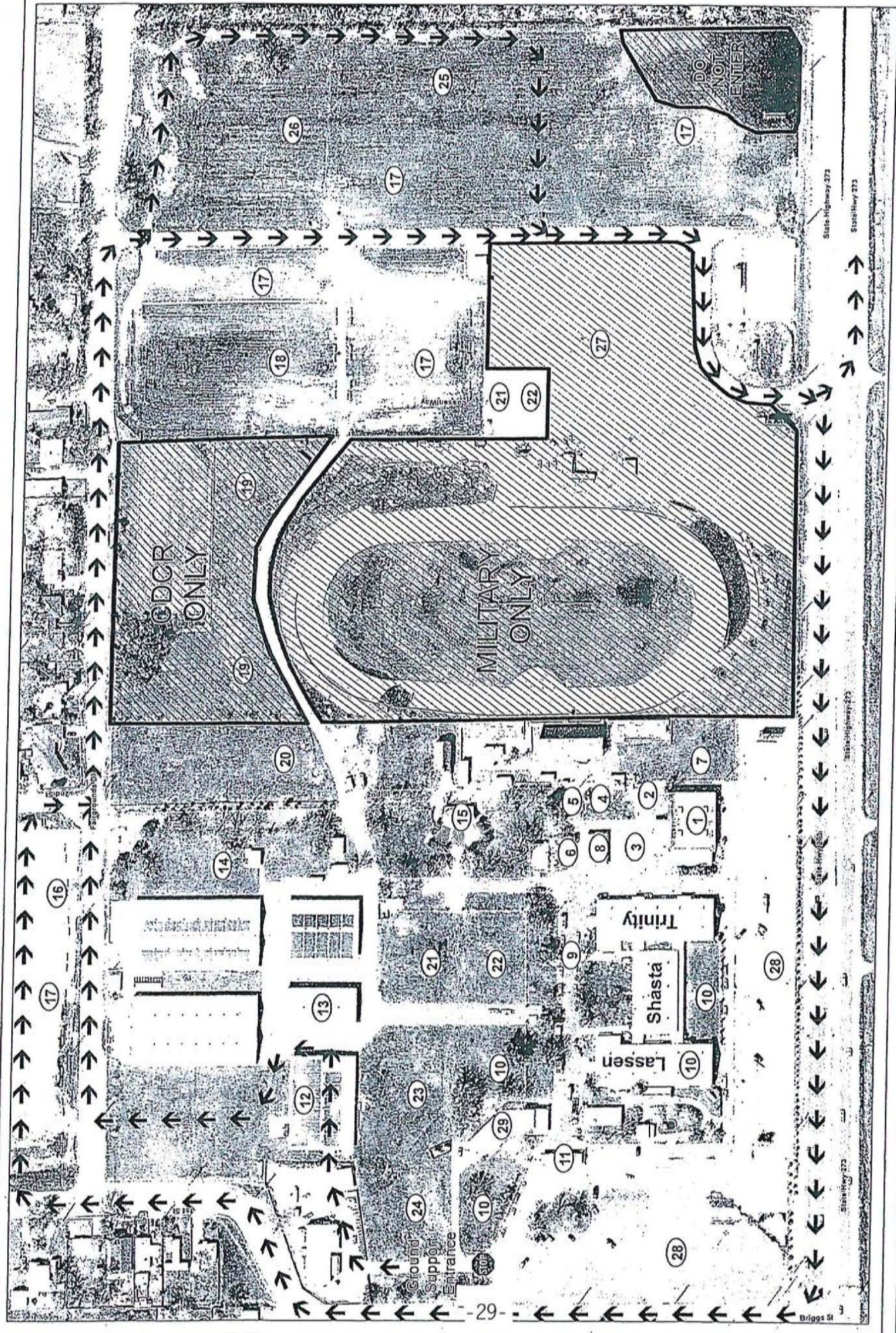
Request # (A,C,E,O): _____ Cell? Contact While on Incident: _____

Work Address: _____

City: _____ State: _____ Zip Code: _____



Facilities Map ZOGG INCIDENT CA-SHU009978



- 1. Check-In/Finance
 - 2. Logistics-Facilities
 - 3. Communications
 - 4. Safety/DPS
 - 5. Liaison
 - 6. IC
 - 7. GIS
 - 8. Accommodations
 - 9. OES
 - 10. Crew Sleeping
 - 11. PIO
 - 12. Ground Support
 - 13. Supply
 - 14. Kitchen
 - 15. Briefing
 - 16. Lunches/Water/Ice
 - 17. Engine Parking
 - 18. CDCR Parking
 - 19. CDCR
 - 20. MERT
 - 21. Laundry
 - 22. Showers
 - 23. Mobile Sleepers
 - 24. CCC Sleeping
 - 25. Fuel
 - 26. Transport Parking
 - 27. CNG
 - 28. Overhead Parking
 - 29. Rehab Lounge
- *Laundry/Showers Available to All.



UNIT LOG (ICS 214)

1. Incident Name: Zogg	2. Operational Period: Date From: 9/30/20 Date To: 10/1/20 Time From: 0700 Time To: 0700
----------------------------------	--

3. Unit Name/Designators	4. Unit Leader (Name and ICS Position)
---------------------------------	---

5. Personnel Assigned/Designators		
NAME	ICS POSITION	HOME BASE

6. Activity Log (Continue on Reverse)	
TIME	MAJOR EVENTS

7. Prepared By:	Date/Time:	NIMS IAP
------------------------	-------------------	----------