

* CORRECTED *

INCIDENT ACTION PLAN DIXIE WEST ZONE INCIDENT

CA-BTU-009205

Monday



OPERATIONAL PERIOD

8/16/2021 0700
to
8/17/2021 0700



INCIDENT OBJECTIVES (ICS 202)

1. Incident Name: <p style="text-align: center;">DIXIE WEST ZONE</p>	2. Operational Period: Date From: 8/16/2021 Date To: 8/17/2021 Time From: 0700 Time To: 0700
--	---

3. Objective(s):

Strategic Objective

Implement a full suppression strategy on the Dixie Fire. Strategy and Tactics implemented on the incident are to be prioritize utilizing life safety, community infrastructure defense, and natural/cultural values as a guiding principal. Minimize acres burned on all lands by effective and efficient firefighting efforts that offer the highest probability of success while maintaining safety first.

Leaders Intent

Work effectively with cooperative partners towards a common goal of protecting values in a safe and efficient manner. All incident assigned personnel should be prepared to take the appropriate actions regarding:

- Professional behavior, conduct timely / effective communications
- Personal safety and safety of others, including driving slowly, safely and defensively Implementation of tactics that offer a high probability of success
- Manage fatigue by taking breaks and maintaining work rest guidelines
- All line supervision personnel including crew and striketeam leaders must attend the morning Operational Briefing

Management Objectives

- Utilize the risk management process to identify and mitigate hazards to protect first responders and the public. Emphasize strategies and tactics that have the highest probability of success and the least exposure to first responders and the public.
- Develop proactive strategies to protect life, residential properties, communities, businesses and infrastructure. Employ tactics that fulfill these strategies while being mindful of the necessity for contingency and emergency plans. Ensure strategies account for incident priorities, applying resources to those protecting life and residential properties first.
- Follow COVID-19, CDC and established local, state and federal guidance to limit virus spread within the incident and surrounding communities near the fire area.
- Provide timely and continuous incident information to affected agency partners, cooperators, California Team 4 as well as the public.
- Utilize social media and all other communications tools to keep the public well informed of the fire conditions and other pertinent information.
- Maintain fiscal accountability and keep costs commensurate with values at risk.

Control Objectives

- Keep the fire north of fire perimeter and Highway 162 and the junction on Highway 70
- Keep the fire south of Harvey Valley Road
- Keep the fire east of Mill Creek drainage
- Keep the fire west of Genesee Valley Road and Grizzly Ridge to Highway 70 and Highway 395 to limit fire spread

General Situational Awareness

Steep and rugged terrain, critically dry and receptive fuel beds, active area for fire history and drought stressed trees.

Stop, Think, Organize, Proceed

5. Site Safety Plan Required? Yes No

Approved Site Safety Plan(s) Located at:

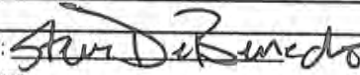
6. Incident Action Plan

- | | | | |
|---|--|--|---|
| <input checked="" type="checkbox"/> ICS 203 | <input checked="" type="checkbox"/> ICS 215A | <input checked="" type="checkbox"/> COVID-19 Checklist | <input checked="" type="checkbox"/> Water Usage Report |
| <input checked="" type="checkbox"/> ICS 204 | <input checked="" type="checkbox"/> ICS 220 | <input checked="" type="checkbox"/> Training Message | <input checked="" type="checkbox"/> Facilities Map |
| <input checked="" type="checkbox"/> ICS 205 | <input checked="" type="checkbox"/> Weather Forecast | <input checked="" type="checkbox"/> PIO Message | <input checked="" type="checkbox"/> Ground Support Map |
| <input checked="" type="checkbox"/> ICS 206 | <input checked="" type="checkbox"/> Fire Behavior | <input checked="" type="checkbox"/> Finance Message | <input checked="" type="checkbox"/> Firing Go no Go Checklist |
| <input checked="" type="checkbox"/> ICS 208 | <input checked="" type="checkbox"/> Safety Message | <input checked="" type="checkbox"/> Shift Ticket Example | <input checked="" type="checkbox"/> ICS 214 |

7. Prepared By: B. Bloxham	Position/Title: PSC	Signature:
8. Approved by Incident Commander:	B. See	Signature:

ICS 202

ORGANIZATION ASSIGNMENT LIST (ICS 203)

1. Incident Name: DIXIE WEST ZONE		2. Operational Period: Date From: 8/16/2021 Date To: 8/17/2021		
		Time From: 0700 Time To: 0700		
3. Incident Commander(s) and Command Staff:		7. Operation Section:		
UC's	B. See, J. Lusher (LNP), G. Belyea (T)	Operations	M. Brunton	
Deputy	B. Farias	Deputy Operations	J. Pierce	
Safety Officer	D. Godden, M. Chamblin (T)	Night Ops	E. Schwab	
Information Officer	D. Olson, B. Mercado			
Liaison Officer	Z. Hamill, D. Misner, D. Carreiro			
L.E. Liaison Officer	J. Jared, M. Solso (T)			
4. Agency/Organization Representatives:		See 203A on the following page		
Agency/Organization	Name			
Lassen National Forest	D. Bumpus			
Plumas National Forest	C. Carlton			
Lassen County S.O.	M. Carney			
Plumas County S.O.	C. Wingfield			
Butte County S.O.	S. Collins			
Shasta County S.O.	C. MacGregor			
CAL OES	J. Lara, J. Fry			
CDCR	S. Harkness			
CCC	C. Harris, A. Parga			
CHP	E. Egide			
CAL TRANS	M. Webb			
CAL EMSA	J. Guzman			
Air National Guard	C. Henson			
PG&E	D. Hawks, F. Berbina			
CAL FIRE BTU	G. Sjolund			
CAL FIRE LMU	L. Caldwell			
CAL FIRE TGU	B. Lopez			
5. Planning Section:				
Chief	B. Bloxham			
Deputy	S. DeBenedet			
Resource Unit	L. Plata, E. Campbell, M. Selzer (T)			
Situation Unit	C. Ingram, T. Byrd (T)			
Documentation Unit	R. Frymire			
Demobilization Unit	S. Birkimer			
GISS	S. Stanish			
FBAN	B. Newman			
IMET	J. Gouldsward			
Training Tech Spec	J. Voyson	Air Operations Branch		Director: M. Stanford
Crew Tech Spec	B. Sheffield	Deputy Air Operations		
		Air Tactical Group Supervisor		
		Air Support Group Supervisor		
6. Logistics Section		C. Willson, S. Ryan (T)		
Chief	M. Ferguson, R. Cluff (T)	Helibase Manager		
Supply Unit	C. Bonner	P. Bosco		
Facilities Unit	S. Williams	8. Finance Section		
Ground Support Unit	A. Whitlock	Chief	P. Aguada, K. Schaefer (T)	
Communications Unit	K. Johnson	Time Unit	J. Orozco	
Medical Unit	K. Fortney	Procurement Unit	A. Hesterly	
Accommodations	A. Brown	Comp/Claims Unit	F. Mares	
Ordering Manager	J. Peckham	Cost Unit	C. Maga-Lafaele	
Prepared By: Name:	S. DeBenedet	Position/Title:	PSC	Signature: 
ICS 203		Date/Time:	8/15/2021 2300 hours	NIMS IAP

ORGANIZATION ASSIGNMENT LIST (ICS 203A)

1. Incident Name: **DIXIE WEST ZONE**
 2. Operational Period: Date From: **8/16/2021** Date To: **8/17/2021**
 Time From: **0700** Time To: **0700**

1. Incident Name:		2. Operational Period:		8/16/2021		8/17/2021	
DIXIE WEST ZONE		Date From:		Date To:		Time From:	
		Time From:		Time To:		Time To:	
7. Operation Section:		Air Operations Branch				Westwood Sector	
Chief: M. Brunton		Air Support		Director:		M. Stanford	
Deputy: J. Pierce		C. Wilson, S. Ryan (T)		Director:			
Night Ops: E. Schwab		Helibase Manager: P. Bosco		Director:			
Butte Sector				Lassen Sector			
Deputy: K. Bohall				Deputy: S. Norman			
Branch		Branch		Branch		Branch	
1/5/7		9		Clear		147 Group	
A/B/C/E/F/G/I		K		Meadow Group		S. Grendahl	
Director: J. Tepia (12hr)		Director: B. Ham		Duffy Group		C. Zimmerman (T)	
T. Cassone (12hr)		T. Perry (T)		Westwood Group		J. Pangburn	
		J. Reis (T)		Peninsula Group		SCHMIDT	
		Director: L. Szczepanik / M. Klimek		Janesville Contingency		Director: J. Eirlich	
		J. Botts		Wildcat Group		B. Brady	
		J. Martinez		Grade Group			
		S. MARTINEZ		Christie Group			
		BUNCH / R. Rice / J. Wilburn		Wingfield Group			
		P. English					
		Director: G. Boston		Branch		Director:	
		K. Swope		Division/Group			
		Mc FARREN		Division/Group			
		J. Spindler (T)		Division/Group			
		S. Volmer		Division/Group			
				Division/Group			
				Division/Group			
				Division/Group			
				Division/Group			
				Division/Group			
				Division/Group			
				Division/Group			
				Division/Group			
				Division/Group			
				Division/Group			
				Division/Group			
				Division/Group			
				Division/Group			
				Division/Group			
				Division/Group			
				Division/Group			

Prepared By: **S. DeBenedet** Position/Title: **PSC**
 Date/Time: **8/15/2021**
 Signature: *Steve DeBenedet*
 2300 hours



Dixie West Zone Fire Weather Forecast



Forecast Number: 30
Sectors: Lassen/Westwood
Shift Date: Monday, August 16th 2021

Incident Meteorologist: Joe Goudsward
/s/ Joseph Goudsward
Forecast Issued: 1800 August 15th, 2021

WEATHER DISCUSSION:

The upper level high pressure system that been the dominant weather feature of late has been compressed to the south as an upper level trough of low pressure is expected to move on shore later this afternoon. This will put the incident in a predominant SW flow aloft allowing for much better ventilation. This pattern change will also result in gusty southwest winds developing and when combined with warm temperatures and low humidity, could lead to plume dominated fires and rapid rates of spread. Winds may gust in excess of 30 mph for several hours Monday afternoon and likely longer than that along the ridge tops and any exposed slope. If winds align properly with topography, local winds could be stronger. The winds will slacken off tonight but return late Tuesday morning with red flag conditions redeveloping. A wind shift to the northeast is expected Tuesday night with breezy conditions through a good part of the night.

*****LOCAL RED FLAG WARNNIG IN EFFECT FROM 3 PM MONDAY TO 10 PM TUESDAY*****

WEATHER FORECAST MONDAY: Smoke and haze in the morning, smoke will thin considerably in the afternoon.

TEMPERATURES:	Ridge Top:	Highs:	86-91
	Slope/Valley:	Highs:	92-97
HUMIDITY:	Ridge Top:	Min:	12-17 %
	Slope/Valley:	Min:	10-15 %

20 FT WINDS: **Ridge Top:** Light and variable in the morning, becoming southwest by early afternoon and increasing to 15-25 mph gusts of 35 mph.
Slope/Valley: Terrain driven winds early, becoming west to southwest by early afternoon and increasing to 10-20 mph with gusts of 30 mph.

CHANCE OF THUNDERSTORMS: 0% - LAL: 1 - Haines Index: 5

STABILITY/INVERSION: Morning inversion decreasing by 1300 hours. Ventilation will improve dramatically.

WEATHER FORECAST MONDAY NIGHT: Clear. Areas of smoke and haze.

TEMPERATURES:	Ridge Top:	Lows:	55-60
	Slope/Valley:	Lows:	48-57
HUMIDITY:	Ridge Top:	Max:	34-39 %
	Mid Slopes:	Max:	29-35 %
	Slope/Valley:	Max:	45-51 %

20 FT WINDS: **Ridge Top:** Southwest 10-20 mph.
Slope/Valley: West to southwest 12-20 mph with gusts up to 30 mph in the evening. Becoming downslope/down-valley 3-6 mph by morning. Winds will likely stay elevated on exposed slopes.

CHANCE OF THUNDERSTORMS: 0% - LAL: 1 - Haines Index: 5

STABILITY/INVERSION: Weak inversion developing after midnight with poor dispersion

EXTENDED OUTLOOK: Gusty winds will redevelop late Tuesday morning as a dry cold front moves through. Winds could gust as high as 40 mph with low humidity. A wind shift is expected Tuesday night and into Wednesday with breezy conditions continuing. A dry west to southwest flow is expected after Wednesday.

FIRE BEHAVIOR FORECAST

FORECAST NUMBER: 22	TYPE OF FIRE: Wildfire
FIRE NAME: Dixie - West Zone	OPERATIONAL PERIOD: 8/16/21 - 8/17/21 0700-0700
DATE ISSUED: 8/15/21	TIME ISSUED: 2000
UNIT: BTU - Butte Unit	SIGNED: <i>Brian Newman</i>
Typed/printed: Brian Newman FBAN	

INPUTS

WEATHER SUMMARY: ******RED FLAG WARNING TODAY!!******
Hot, dry and windy conditions will be over the fire today, with a significant increase in winds in the afternoon. Temperatures will be in the upper 80's to upper 90's with minimum humidity dropping to 10 to 17% during the day. Winds will be light and variable in the morning, shifting to the Southwest 15-25 mph gusting to 35 mph in the afternoon. Overnight the temperatures will be in the upper 40's to upper 50's with humidity recovery at 34 - 51%, except 29-25% in the mid slope thermal belt areas. Winds overnight will continue from the Southwest at 12-20mph with 30 mph gusts until early morning hours.

OUTPUTS

FIRE BEHAVIOR

GENERAL: *****FUELS AND FIRE BEHAVIOR ADVISORY IN EFFECT FOR THE FIRE AREA*****

Smoke will be thick over the fire area to start the day, but should begin to thin around mid-day due to winds beginning to pick up. Expect fire behavior activity to increase with this wind change. Exceptionally dry timber stands are very receptive to spotting, and can contribute to large fire growth. The probability of ignition will be around 60% under the smoke cover, and 80-90% in more clear areas. Spotting distances of 1/2 to 1 mile are possible in topographic favored areas and any downwind locations, with longer range spotting possible under higher wind conditions. Dramatic increase in afternoon wind speeds will result in rapid fire growth, and will result in column development and possible plume dominated activity.

ERC's at record levels above 97th percentile!!

SPECIFIC:

Butte Sector: Smoldering material will continue to burnout, especially in the stump holes and large dead and down. Minimal heat exists in the sector, expect this to continue as mopup and patrol continues.

Lassen Sector: Fire progression is primarily fuel and slope driven, but expect short intense runs and plume development in areas where fuel, winds, and topography align. Fire activity may increase quickly when smoke thins and surface winds increase in the afternoon. Rugged terrain will channel winds and increase the probability of ember cast and spotting, especially in upper elevations or thinner tree stands. The down canyon winds overnight will be lighter overall, but will be enhanced by topographic features and outflow conditions.

Westwood Sector: Fire activity in the Westwood sector and perimeter divisions will be primarily driven by topography and fuels with localized light winds causing short range spotting to be possible. Interior heat continues to show in the rugged terrain, but should not pose threats to control lines.

Clear Branch/Diamond Branch: Fire activity should be moderate to start the shift, but will increase quickly as the wind exposed slopes begins to experience the forecasted increase in winds. As the smoke clears in the afternoon and if fire becomes established in heavy pockets of fuel in favored topographic features, expect short intense runs and plume development. Wind and fire alignment with Willard creek and the Susan river drainages can result in large fire growth. Spot fires can become established in the heavy dead and down fuels, and contribute to higher spread rates.

AIR OPERATIONS

Air operations will be limited today in the morning, but as the smoke clears throughout the day, opportunities to utilize aircraft will become available.

SAFETY

- Short intense fire runs are possible. Make sure you know where your safety zone is at and the time it takes to get there.
- Watch for spot fires and fire in down-slope position.

Fuels and Fire Behavior Advisory

Northern California

August 2, 2021 to August 16, 2021



Subject: Potential for extreme fire behavior due to critically low live and dead fuel moistures, very dry conditions resulting from persistent drought, minimal snowpack and spring precipitation, and elevated fire danger rating values across much of northern California.

Discussion: Fires burning in northern California are exhibiting extreme fire growth based on critical fuel conditions. Fire spread is fuel driven and does not depend on wind to spread. Surface fuels are very receptive to embers. Long range spotting, area ignition, and group torching is occurring on large fires frequently.

Difference from normal conditions: Northern California is in a drought; currently with 90% at Extreme to Exceptional levels. The drought is expected to persist or intensify thorough out the fire season. Deficient rainfall and snowpack with early melt off has resulted in fuels that are below average in dryness, with record setting conditions for most areas.

Concerns to Firefighters and the Public:

- Energy Release Component (ERC) at numerous weather stations set record maximums already this year and are running at or above the 97th percentile in most cases. Expect increased fire intensity and spread rates in these areas. Early season extreme fire behavior has been observed in both light and heavy fuels. **Anticipate increased spread rates, spotting, and active nighttime burning.**
- The combination of persistent drought and record-low rainfall and snowpack amounts has led to very low live and dead fuel moistures. Low 1000-hour fuel moistures have been evidenced by complete consumption of dead fuels on recent fires. Live fuel moistures in grasses, shrubs and trees, have already reached critical levels in many areas of Northern California due to limited green-up this spring. **Expect fires to ignite easier and spread faster. Do not expect fires to exhibit reduced fire behavior when entering areas of live fuels; anticipate increased spread rates and spotting.**
- Direct attack is often not feasible under regular diurnal wind conditions with ground resources. And aviation utilization is often insufficient in moderating rate of spread without immediate heavy ground resource response. **Anticipate higher resistance to control in all fuel types.**
- Already this year, Northern California has experienced large fire activity and multiple team deployments. California will likely experience an extended fire season. It is important to be mindful of and manage fatigue for all resources. **Everyone, every day, returns home safely.**

Mitigation Measures:

- Local and inbound fire personnel need to be aware that fire behavior across the state is exceeding normal expectations for this time of the year. **Local briefings need to be thorough and highlight specific fire environment conditions. These include but are not limited to local weather forecasts, Pocket Cards, ERC's, live and dead fuel moistures.**
- Suppression actions need to be based on good anchor points, escape routes, and safety zones. **Remember LCES. Experienced lookouts are essential under these conditions.**
- Base all actions on current and expected behavior of the fire. **Augment initial attack resources as incident activity dictates.**

Area of Concern: Northern California except for the following Predictive Service Areas: North Coast and Bay Marine, west of Highway 101 in Mid-Coast to Mendocino and Diablo-Santa Cruz, and the north eastern portion of Far Eastside.



CALFIRE INCIDENT MANAGEMENT TEAM 3



1. INCIDENT NAME: Dixie Incident		2. DATE PREPARED: August 15, 2021	3. TIME PREPARED: 1800
4. PREPARED BY: Nate La Russo SOFR	5. LEADER NAME: Damon Godden SOF1	6. OPERATIONAL PERIOD: 8/16/2021 0700 TO 8/17/2021 0700	

SAFETY MESSAGE

Never neglect details. When everyone's mind is dulled or distracted the leader must be extra vigilant.

- Snags are prevalent on all areas of the incident. Look up, down and around.
- Red Flag warnings will be in effect.
- Monitor your hydration/nutrition intake and keep adequate supplies of each.
- Make sure that everyone gets a briefing on today's plan.
- Long range spotting of over 1 mile has been observed on this incident.
- Drive defensively, slow down and use your warning lights when needed.

HYDRATE

Have enough cold water available for the entire shift.

You are responsible for your daily Hydration habits.

Drink a minimum of one quart of water each hour.

Remember that nutrition will keep your body healthy.

Avoid carbonated and caffeinated beverages.

Talk to your crew about Heat Illness prevention measures.

Evaluate the work pace based on the day's assignments.

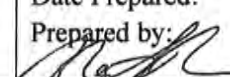


16. GETTING FREQUENT SPOT FIRES ACROSS LINE



INCIDENT RISK ANALYSIS ICS 215A



BRANCH	HAZARDOUS ACTIONS/ CONDITIONS	MITIGATIONS/WARNINGS/REMEDIES
ALL	COVID 19	<ul style="list-style-type: none"> Masks <u>are required indoors</u> in Nevada. Wash/sanitize hands often. Maintain social distancing when applicable.
ALL	EXTREME FIRE BEHAVIOR	<ul style="list-style-type: none"> Expect intense fire runs with plume dominated fire behavior. Long range spotting of one mile plus has been observed. Prepare for pyro-cumulus collapse with severe out flow winds in all directions.
ALL	DRIVING HAZARDS	<ul style="list-style-type: none"> Watch your speeds. Drive defensively! Expect the unexpected. Watch for road degradation, smokey and dusty conditions. Be aware of debris in the roadways from rollout and suppression operations.
ALL	RED FLAG WARNING	<ul style="list-style-type: none"> Increasing temperatures and decreasing humidity. Anticipate strong and gusty winds.
ALL	PERSONNEL SAFETY	<ul style="list-style-type: none"> All personnel are responsible for their personal safety. Immediately report any suspicious activity. Be sure to wear all required PPE while on the fire line.
ALL	ACTIVE TRAIN TRACKS	<ul style="list-style-type: none"> Consider all train tracks in the fire areas as active. Give notice to adjoining Divisions when a train is encountered.
ALL	HYDRATION	<ul style="list-style-type: none"> Drink water before, during and after each shift. Be alert for signs of heat stress in yourself and others.
ALL	FIRE AND DROUGHT WEAKENED TREES/SNAG HAZARDS	<ul style="list-style-type: none"> Follow Hazard Tree Safety Guidelines (IRPG p. 22). Many of the trees within the fire area and along roadways are stressed due to drought conditions and burn times.
ALL	CIVILIAN PRESENCE	<ul style="list-style-type: none"> Watch for civilian traffic. Watch for residents in and around the area.
ALL	COMMUNICATIONS	<ul style="list-style-type: none"> Check the communication plan for frequency assignments. Be clear and concise when talking on the radio. Use human repeaters as needed.
ALL	BRIEFINGS	<ul style="list-style-type: none"> Make sure everyone gets a briefing on the plan for the day. Document this on your ICS 214.
ALL	LCES	<ul style="list-style-type: none"> Ensure that LCES is being utilized.
ALL	HELICOPTER AWARENESS	<ul style="list-style-type: none"> Be aware of rotor wash when working near helicopters. Understand that hazardous trees may react to helicopters overhead.
ALL	HEAVY EQUIPMENT	<ul style="list-style-type: none"> Watch out for heavy equipment traffic! Be aware of heavy equipment working in the area. Be watchful around heavy equipment, they may not see you.
ALL	WILDLIFE	<ul style="list-style-type: none"> Wildlife including bears have been observed by fire personnel.
BR 13	HYDROTHERMAL AREAS	<ul style="list-style-type: none"> Ground in these areas may look solid but may actually be a thin crust hiding pools of acidic, boiling water or mud.
DIV N/P	MINESHAFTS	<ul style="list-style-type: none"> Located in the Caribou Creek area.
Incident Name: Dixie Incident		Date Prepared: 8/15/2021 Prepared by:  Nate La Russo SOFR
		Operational Period: 8/16/2021-8/17/2021 0700-0700

In readiness is all



CAL FIRE INCIDENT MANAGEMENT TEAM 3



Fire and COVID-19 Briefing Checklist

Self-Awareness / Screening

- Immediately separate yourself from others.
- Notify supervisor if you or others experience:
 - Cough, more than expected
 - Shortness of breath or difficulty breathing
 - New loss of taste or smell
 - Fever
 - Sore throat
 - Chills
 - Muscle pain
- Review and follow crew and division plans to isolate, triage, and transport symptomatic personnel.

Hygiene on the Fireline

- Properly wash or sanitize your hands often, especially before and after eating or entering a public place, and after coughing or sneezing.
- Avoid handshakes and communal use items.
- Maintain a supply of hand sanitizer and hand wipes. Inform supervisor of needed resupply.
- Disinfect high touch surfaces often:
 - Radios, phones, doors, pumps, fuel cans, etc.

Social Distancing and Protective Equipment

- Initiate, practice, and remind others of social distancing.
- Conduct briefings and conversations outdoors and at least 6 feet apart.
- Utilize face coverings as a tool when practical.
- Clean or replace dirty face coverings, equipment, and PPE.

Communications

- Face coverings and social distancing complicate communications. Ensure effective sender/receiver messaging.

Protect yourself, your crew, and your camp!

Find more information: <https://www.nwccg.gov/coronavirus>.

NFES 002646 (06/2020)



CDC Self-Assessment
Data Is Not Collected

In readiness is all

ASSIGNMENT LIST (ICS 204 WF)

CONTROLLED UNCLASSIFIED
INFORMATION/BASIC

1. Incident Name: DIXIE WEST ZONE Lassen Sector	2. Operational Period: Date From: 08/16/21 Date To: 08/17/21 Time From: 0700 Time To: 0700	3. Branch Division 9 K
---	---	---

4. Operations Personnel:		Page 1 of 2 Kilo
Operations Section Chief: M. Brunton	Night Ops: E. Schwab	
Branch Director: B. Ham	Branch Safety: J. Beach / M. Belleci (T) / K. Creiglow (T)	
Division/Group Supervisor: T. Perry (T)	Air Attack:	

5. Resources Assigned:		** Resources Below in Bold are 12 Hour **					
Resource Identifier	ALS	LWD	Leader	Personnel	Request #	Hours	Reporting Location
STC						0700-0700	DP 108
STF						0700-0700	DP 108
DOZ PVT E-604			HANNA, TAYLOR	2	E-604	0700-0700	DP 108
DOZ PVT E-984			REHWALD, ALEX	2	E-984	0700-0700	DP 108
DOZ PVT E-986			LEUZINGER, PAUL	2	E-986	0700-0700	DP 108
DOZ PVT E-1086			VAN PELT, KYLE	2	E-1086	0700-0700	DP 108
DOZ PVT E-1427 Ø			MEIER, JON	2	E-1427	0700-0700	DP 108
W/T PVT E-633			ALEXANDER, JASON	1	E-633	0700-1900	DP 108
W/T PVT E-726			TAYLOR, TOM	1	E-726	0700-1900	DP 108
W/T PVT E-728			VIEYRA, RICH	2	E-728	0700-0700	DP 108
W/T PVT E-868			TRAUMILLER, JUSTIN	2	E-868	0700-1900	DP 108
W/T PVT E-961			BUCHER, SHAWN	2	E-961	0700-0700	DP 108
W/T PVT E-1051			HEINE, STEPHEN	2	E-1051	0700-0700	DP 108
MAS PVT E-241			HOLT, KELLY	1	E-241	0700-1900	DP 108
MAST						0700-1900	DP 108
MAST						0700-1900	DP 108
MAST						0700-1900	DP 108
MAST						0700-1900	DP 108

6. Work Assignments:
 Construct contingency line along Hwy 36 to Branch break South Feather Meadow.
 Fall trees that will threaten control line.
 Fall hazard trees.

7. Special Instructions:
 All line supervisors check in with the cost share team at the end of your shift
 Sensitive avoidance areas are flagged in red and black striped flagging. Work with Resource Advisors (REAF) on identification and protection.

8. Communications

Name	Ch	Function	Rx Freq	Rx Tone	Tx Freq	Tx Tone	Notes
NIFC C47	4	COMMAND	172.5500	000.0	165.3875	T2 - 123.0	COLBY MTN.
CDF T29	8	TACTICAL	151.3475	T16 192.8	151.3475	T16 192.8	
CDF T18	14	A/G TACTICAL	159.3450	T16 192.8	159.3450	T16 192.8	A/G TACTICAL
CALCORD	15	MEDICAL	156.0750	T6 156.7	156.0750	T6 156.7	
AIRGUARD	16	AIRGUARD	168.6250	000.0	168.6250	T1 110.9	

9. Prepared by: Name: M. Selzer

Signature:

ICS 204 Date/Time: 8/15/2021 Personnel Count: 21

ASSIGNMENT LIST (ICS 204 WF)

CONTROLLED UNCLASSIFIED
INFORMATION/BASIC

1. Incident Name: DIXIE WEST ZONE Lassen Sector	2. Operational Period: Date From: 08/16/21 Date To: 08/17/21 Time From: 0700 Time To: 0700	3. Branch Division 9 L Page 1 of 3 Lima
---	---	--

4. Operations Personnel:	
Operations Section Chief: M. Brunton Branch Director: B. Ham Division/Group Supervisor: J. Reis (T)	Night Ops: E. Schwab Branch Safety: J. Beach / M. Belleci (T) / K. Creiglow (T) Air Attack:


5. Resources Assigned:		** Resources Below in Bold are 12 Hour **					
Resource Identifier	ALS	LWD	Leader	Personnel	Request #	Hours	Reporting Location
STB						0700-0700	DP 20
STC HUU 9120C			BRYANT, ERIK	18	E-1044	0700-0700	DP 20
STC XNA 2200C			MATCHAM, JED	21	E-87	0700-0700	DP 20
STC						0700-0700	DP 20
STC						0700-0700	DP 20
STC						0700-0700	DP 20
STF						0700-0700	DP 20
T/F XLS 3075			HITCHCOCK, STEVE	11	E-1159	0700-0700	DP 20
STG TCU 9446G (CE) DMOR			FAULKNER, DANNY	35	C-148	0700-0700	DP 20
STG						0700-0700	DP 20
DOZ CZU 1741			PYORRE, SEAN	2	E-741	0700-0700	DP 20
DOZ AEU 2744			PINOCHI, MIKE	4	E-36	0700-0700	DP 20
DOZ TCU 4445			PFEIFFER, MIKE	2	E-203	0700-0700	DP 20
DOZ PVT E-615 Ø			LYNCH, MARTY	2	E-615	0700-0700	DP 20
DOZ PVT E-624			MANZ, JOHN	2	E-624	0700-0700	DP 20
DOZ PVT E-985			MAJOR, JOSHUAH	2	E-985	0700-0700	DP 20
DOZ PVT E-987			MONTI, WEST	2	E-987	0700-0700	DP 20
DOZ PVT E-988			GILL, LEVI	2	E-988	0700-0700	DP 20

6. Work Assignments:
 Construct control lines as direct as possible.
 Construct contingency line on Blue Lake to Rice Road.
 Prepare indirect control line for possible firing operation.
 Fall trees that will threaten control line.
 Prepare structures for defensive actions.

7. Special Instructions:
 All line supervisors check in with the cost share team at the end of your shift
 Sensitive avoidance areas are flagged in red and black striped flagging. Work with Resource Advisors (REAF) on identification and protection.
 Approval needed before dozers enter Lassen National Park.

8. Communications

Name	Ch	Function	Rx Freq	Rx Tone	Tx Freq	Tx Tone	Notes
NIFC C10	2	COMMAND	170.4125	000.0	165.9625	T2 - 123.0	DYER MTN.
CDF T30	9	TACTICAL	151.3925	T16 192.8	151.3925	T16 192.8	
CDF T18	14	A/G TACTICAL	159.3450	T16 192.8	159.3450	T16 192.8	A/G TACTICAL
CALCORD	15	MEDICAL	156.0750	T6 156.7	156.0750	T6 156.7	
AIRGUARD	16	AIRGUARD	168.6250	000.0	168.6250	T1 110.9	

9. Prepared by: Name: M. Selzer RESL Signature: 

ICS 204 Date/Time: 8/15/2021 2200 Personnel Count: 103

NIMS IAP

CONTROLLED UNCLASSIFIED INFORMATION/BASIC

ASSIGNMENT LIST (ICS 204 WF)

CONTROLLED UNCLASSIFIED
INFORMATION//BASIC

1. Incident Name: DIXIE WEST ZONE Lassen Sector	2. Operational Period: Date From: 08/16/21 Date To: 08/17/21 Time From: 0700 Time To: 0700	3. Branch Division 9 L
---	---	---

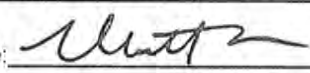
4. Operations Personnel: Operations Section Chief: M. Brunton Branch Director: B. Ham Division/Group Supervisor: J. Reis (T)		Night Ops: E. Schwab Branch Safety: J. Beach / M. Belleci (T) / K. Creiglow (T) Air Attack:
---	--	---

5. Resources Assigned:	** Resources Below in Bold are 12 Hour **							
Resource Identifier	ALS	LWD	Leader	Personnel	Request #	Hours	Reporting Location	
DOZ PVT E-990			SHERER, CHRIS	2	E-990	0700-0700	DP 20	
DOZ PVT E-1428			CHASE, DEAN	2	E-1428	0700-0700	DP 20	
W/T PVT E-300			COPE, ALAN	2	E-300	0700-0700	DP 20	
W/T PVT E-301			SWITHENBANK, BRIAN	2	E-301	0700-0700	DP 20	
W/T PVT E-719			KELLY, TOM	1	E-719	0700-1900	DP 20	
W/T PVT E-720			KELLY, AARON	2	E-720	0700-0700	DP 20	
W/T PVT E-1362			HARDY, BILL	2	E-1362	0700-0700	DP 20	
W/T PVT E-1369			ROGERS, BUDDY	1	E-1369	0700-1900	DP 20	
W/T PVT E-1373			VASQUEZ, MIGUEL	1	E-1373	0700-1900	DP 20	
W/T PVT E-1390			KEYLON, DON	1	E-1390	0700-1900	DP 20	
W/T PVT E-1395			AVILA, CRYSTAL	2	E-1395	0700-0700	DP 20	
W/T PVT E-1397			PULLEY, COLE	2	E-1397	0700-0700	DP 20	
MAS PVT E-53			ROTHER, BROOK	1	E-53	0700-1900	DP 20	
MAS PVT E-122			OLSON, RYAN	1	E-122	0700-1900	DP 20	
MAS PVT E-322			NUMMELY, CHAD	1	E-322	0700-1900	DP 20	
MAS PVT E-1437			PAYTON, MICHELLE	1	E-1437	0700-1900	DP 20	
MAS PVT E-1438			SHULTS, JUSTIN	1	E-1438	0700-1900	DP 20	
FEL						0700-1900	DP 20	

6. Work Assignments:
 Construct control lines as direct as possible.
 Construct contingency line on Blue Lake to Rice Road.
 Prepare indirect control line for possible firing operation.
 Fall trees that will threaten control line.
 Prepare structures for defensive actions.

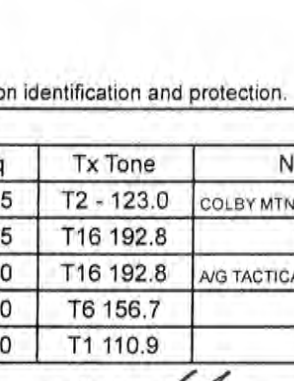
7. Special Instructions:
 All line supervisors check in with the cost share team at the end of your shift
 Sensitive avoidance areas are flagged in red and black striped flagging. Work with Resource Advisors (REAF) on identification and protection.
 Approval needed before dozers enter Lassen National Park.

8. Communications							
Name	Ch	Function	Rx Freq	Rx Tone	Tx Freq	Tx Tone	Notes
NIFC C10	2	COMMAND	170.4125	000.0	165.9625	T2 - 123.0	DYER MTN.
CDF T30	9	TACTICAL	151.3925	T16 192.8	151.3925	T16 192.8	
CDF T18	14	A/G TACTICAL	159.3450	T16 192.8	159.3450	T16 192.8	A/G TACTICAL
CALCORD	15	MEDICAL	156.0750	T6 156.7	156.0750	T6 156.7	
AIRGUARD	16	AIRGUARD	168.6250	000.0	168.6250	T1 110.9	

9. Prepared by: Name: M. Selzer RESL Signature: 
ICS 204 Date/Time: 8/15/2021 2200 Personnel Count: 25

ASSIGNMENT LIST (ICS 204 WF)

CONTROLLED UNCLASSIFIED
INFORMATION//BASIC

1. Incident Name:		2. Operational Period:				3. Branch		Division
DIXIE WEST ZONE		Date From: 08/16/21		Date To: 08/17/21		13		N
Lassen Sector		Time From: 0700		Time To: 0700		Page 1 of 2		November
4. Operations Personnel:								
Operations Section Chief: M. Brunton				Night Ops: E. Schwab				
Branch Director: L. Szczepanik / M. Klimek				Branch Safety:				
Division/Group Supervisor: J. Botts				Air Attack:				
5. Resources Assigned:		** Resources Below in Bold are 12 Hour **						
Resource Identifier	ALS	LWD	Leader	Personnel	Request #	Hours	Reporting Location	
STC LNU 9142C			BAUMAN, BILLY			0700-0700	MORGAN SUMMIT	
STC XSD 6440C			BOGGELN, BRIAN F	23	E-1164	0700-0700	MORGAN SUMMIT	
ENG3 KNF 642			RICHWHINE, TYLER	6	E-1340	0700-1900	MORGAN SUMMIT	
ENG3 SNF 321			LOVATO, RICHARD	3	E-1341	0700-1900	MORGAN SUMMIT	
ENG6 SCD 1632			RESCATE, ADAN	4	E-20353	0700-1900	MORGAN SUMMIT	
STG RRU 9313G (CDCR)			DACANAY, MICHAELA	29	C-196	0700-0700	MORGAN SUMMIT	
CRW CNA 501			WARNER, JON	24	C-254.5	0700-1900	MORGAN SUMMIT	
CRW CNA 502			PLASKETT, BRANDI	24	C-254.8	0700-1900	MORGAN SUMMIT	
DOZ PVT E-612			PEARSON, LEMUEL	1	E-612	0700-1900	MORGAN SUMMIT	
DOZ PVT E-614			VAN-PELT, KYLE	1	E-614	0700-1900	MORGAN SUMMIT	
DOZ PVT E-1402			MURRAY, ADAM	3	E-1402	0700-1900	MORGAN SUMMIT	
W/T YNP E-1310			LUDWIG, AARON		E-1310	0700-1900	MORGAN SUMMIT	
W/T PVT E-45			BECKER, CLARK	2	E-45	0700-1900	MORGAN SUMMIT	
W/T PVT E-509			HUNTSMAN, JOHN	2	E-509	0700-1900	MORGAN SUMMIT	
W/T PVT E-1384			MICHAELS, MATT	1	E-1384	0700-1900	MORGAN SUMMIT	
MAS PVT E-54			HERTZG, JOHN	1	E-54	0700-1900	MORGAN SUMMIT	
MAS PVT E-55				1	E-55	0700-1900	MORGAN SUMMIT	
MAS PVT E-123			FUNES, TOM	1	E-123	0700-1900	MORGAN SUMMIT	
6. Work Assignments:								
Construct contingency line on Park HWY 89.								
Patrol and complete mop up on L2 lightning fire.								
Establish control lines, scout for secondary lines, and prepare for firing operations on the Morgan Fire.								
7. Special Instructions: ***EMPF HAWKINS / EMPF FERRIS BRANCH 13 RESOURCE***								
All line supervisors check in with the cost share team at the end of your shift								
Assist IA resources with any lightning fires.								
Utilize rubber track equipment on roads inside the Park where practical.								
Sensitive avoidance areas are flagged in red and black striped flagging. Work with Resource Advisors (REAF) on identification and protection.								
8. Communications								
Name	Ch	Function	Rx Freq	Rx Tone	Tx Freq	Tx Tone	Notes	
NIFC C47	4	COMMAND	172.5500	000.0	165.3875	T2 - 123.0	COLBY MTN	
CDF T31	10	TACTICAL	159.3825	T16 192.8	159.3825	T16 192.8		
CDF T18	14	A/G TACTICAL	159.3450	T16 192.8	159.3450	T16 192.8	A/G TACTICAL	
CALCORD	15	MEDICAL	156.0750	T6 156.7	156.0750	T6 156.7		
AIRGUARD	16	AIRGUARD	168.6250	000.0	168.6250	T1 110.9		
9. Prepared by: Name:								
M. Selzer				RESL				
						Signature: 		
ICS 204		Date/Time: 8/15/2021 2200		Personnel Count: 126				

ASSIGNMENT LIST (ICS 204 WF)

CONTROLLED UNCLASSIFIED
INFORMATION/BASIC

1. Incident Name: DIXIE WEST ZONE Lassen Sector	2. Operational Period: Date From: 08/16/21 Date To: 08/17/21 Time From: 0700 Time To: 0700	3. Branch Division 13 N Page 2 of 2 November
---	---	---

4. Operations Personnel: Operations Section Chief: M. Brunton Branch Director: L. Szczepanik / M. Klimek Division/Group Supervisor: J. Botts	Night Ops: E. Schwab Branch Safety: K. Harston (12 Hr.) Air Attack:
---	---

5. Resources Assigned:		** Resources Below in Bold are 12 Hour **					
Resource Identifier	ALS	LWD	Leader	Personnel	Request #	Hours	Reporting Location
MAS PVT E-222			WURLITZER, GEORGE	1	E-222	0700-1900	MORGAN SUMMIT
MAS PVT E-279			POTTER, GREG	1	E-279	0700-1900	MORGAN SUMMIT
MAS PVT E-314			CROOK, RUSSELL	1	E-314	0700-1900	MORGAN SUMMIT
MAS PVT E-316			LAWLESS, GARY	1	E-316	0700-1900	MORGAN SUMMIT
MAS PVT E-779			BASHAM, MARK	1	E-779	0700-1900	MORGAN SUMMIT
MAS PVT E-780			JOHNSON, JON	1	E-780	0700-1900	MORGAN SUMMIT
MAS PVT E-852			WURLITZER, GEORGE	1	E-852	0700-1900	MORGAN SUMMIT
EXC PVT E-1441			NORTH, MICHAEL	1	E-1441	0700-1900	MORGAN SUMMIT
TFLD EATON				1		0700-1900	MORGAN SUMMIT
TFLD HARGER (T)			HARGER, JOSEPH	1	O-1162	0700-1900	MORGAN SUMMIT
FALM PVT O-926			ROHRBOUGH, ADAM	2	O-926	0700-1900	MORGAN SUMMIT
FALM PVT O-927			JANOWIAK, TODD	2	O-927	0700-1900	MORGAN SUMMIT
REAF DRAKE			DRAKE, CEDAR	1	O-20824	0700-1900	MORGAN SUMMIT
REAF BUCKLEY			BUCKLEY, STEVEN	1	O-21031	0700-1900	MORGAN SUMMIT
REAF MCGRAW			MCGRAW, MICHAEL	1	O-21026	0700-1900	MORGAN SUMMIT
ARCH STUEHAR			STUEHAR, JOSHUA	1	O-21053	0700-1900	MORGAN SUMMIT
ARCH RAY			RAY, MOLLY	1	O-21032	0700-1900	MORGAN SUMMIT

6. Work Assignments:
 Construct contingency line on Park HWY 89.
 Patrol and complete mop up on L2 lightning fire.
 Establish control lines, scout for secondary lines, and prepare for firing operations on the Morgan Fire.

7. Special Instructions: *EMPF HAWKINS / EMPF FERRIS BRANCH 13 RESOURCE*****
 All line supervisors check in with the cost share team at the end of your shift
 Assist IA resources with any lightning fires.
 Utilize rubber track equipment on roads inside the Park where practical.
 Sensitive avoidance areas are flagged in red and black striped flagging. Work with Resource Advisors (REAF) on identification and protection.

8. Communications

Name	Ch	Function	Rx Freq	Rx Tone	Tx Freq	Tx Tone	Notes
NIFC C47	4	COMMAND	172.5500	000.0	165.3875	T2 - 123.0	COLBY MTN.
CDF T31	10	TACTICAL	159.3825	T16 192.8	159.3825	T16 192.8	
CDF T18	14	A/G TACTICAL	159.3450	T16 192.8	159.3450	T16 192.8	A/G TACTICAL
CALCORD	15	MEDICAL	156.0750	T6 156.7	156.0750	T6 156.7	
AIRGUARD	16	AIRGUARD	168.6250	000.0	168.6250	T1 110.9	

9. Prepared by: Name:	M. Selzer	RESL	Signature:
ICS 204	Date/Time: 8/15/2021	2200	Personnel Count: 19

ASSIGNMENT LIST (ICS 204 WF)

CONTROLLED UNCLASSIFIED
INFORMATION//BASIC

1. Incident Name: DIXIE WEST ZONE	2. Operational Period: Date From: 08/16/21 Date To: 08/17/21 Time From: 0700 Time To: 0700	3. Branch Division 13 O
--	---	--

4. Operations Personnel:		Page 1 of 1 Oscar
Operations Section Chief: M. Brunton	Night Ops: E. Schwab	
Branch Director: L. Szczepanik / M. Klimek	Branch Safety:	
Division/Group Supervisor: J. Martinez	Air Attack:	

5. Resources Assigned:		** Resources Below in Bold are 12 Hour **					
Resource Identifier	ALS	LWD	Leader	Personnel	Request #	Hours	Reporting Location
ENG3 TNF E1042			RASMUSSEN, DAVID	3	E-1042	0700-1900	MORGAN SUMMIT
ENG3 SWS 33			RUNOLFSON, GABRIEL	5	E-1337	0700-1900	MORGAN SUMMIT
ENG3 GREX 932			MARSTON, PHIL	4	E-1345	0700-1900	MORGAN SUMMIT
STG SBC 9322G (LG)			HEATH, BRIAN	41	C-109	0700-1900	MORGAN SUMMIT
WFM C91						0700-1900	MORGAN SUMMIT
WFM LNF O-1167					O-1167	0700-1900	MORGAN SUMMIT
WFM EAGLE LAKE O-20810					O-20810	0700-1900	MORGAN SUMMIT
WFM HVP KILAUEA O-21073					O-21073	0700-1900	MORGAN SUMMIT
CRW CNA 507			NEUSCHWANDWER	23	C-255.10	0700-1900	MORGAN SUMMIT
CRW CNA 508			WATSON, KIM	23	C-255.13	0700-1900	MORGAN SUMMIT
DOZ PVT E-589 → CONT. GRP			WYATT, JESSE	2	E-589	0700-1900	MORGAN SUMMIT
W/T PVT E-1365			KOEHLER, BILL	1	E-1365	0700-1900	MORGAN SUMMIT
W/T PVT E-1382					E-1382	0700-1900	MORGAN SUMMIT
FALM PVT O-932				2	O-932	0700-1900	MORGAN SUMMIT
FALM PVT O-934			STANDLEE, DEREK	2	O-934	0700-1900	MORGAN SUMMIT
FALM PVT O-935				3	O-935	0700-1900	MORGAN SUMMIT

6. Work Assignments:
Continue indirect line and prep Park Highway 89 North to Lost Creek.
Construct handline from Kings Creek South to Spencer Meadows.

7. Special Instructions:*EMPF HAWKINS / EMPF FERRIS BRANCH 13 RESOURCE*****
All line supervisors check in with the cost share team at the end of your shift
Assist IA resources with any lightning fires.
Utilize rubber track equipment on roads inside the Park where practical.
Sensitive avoidance areas are flagged in red and black striped flagging. Work with Resource Advisors (REAF) on identification and protection.

8. Communications

Name	Ch	Function	Rx Freq	Rx Tone	Tx Freq	Tx Tone	Notes
NIFC C10	2	COMMAND	170.4125	000.0	165.9625	T2 - 123.0	DYER MTN.
VTAC13	12	TACTICAL	158.7375	T6 156.7	158.7375	T6 156.7	
CDF T18	14	A/G TACTICAL	159.3450	T16 192.8	159.3450	T16 192.8	A/G TACTICAL
CALCORD	15	MEDICAL	156.0750	T6 156.7	156.0750	T6 156.7	
AIRGUARD	16	AIRGUARD	168.6250	000.0	168.6250	T1 110.9	

9. Prepared by: Name:	M. Selzer	RESL	Signature:
ICS 204	Date/Time: 8/15/2021 2200	Personnel Count: 109	

ASSIGNMENT LIST (ICS 204 WF)

CONTROLLED UNCLASSIFIED
INFORMATION/BASIC

1. Incident Name: DIXIE WEST ZONE Lassen Sector	2. Operational Period: Date From: 08/16/21 Date To: 08/17/21 Time From: 0700 Time To: 0700	3. Branch Division 13 Lassen IA
---	---	--

4. Operations Personnel:		Page 1 of 1
Operations Section Chief: M. Brunton	Night Ops: E. Schwab	
Branch Director: L. Szczepanik / M. Klimek	Branch Safety:	
Division/Group Supervisor: R. Rice / J. Wilburn / BUNCH	Air Attack:	

5. Resources Assigned: ** Resources Below in Bold are 12 Hour **							
Resource Identifier	ALS	LWD	Leader	Personnel	Request #	Hours	Reporting Location
ENG3 ALPINE E3				3	E-7	0700-1900	MORGAN SUMMIT
ENG NM AMER19			STANOVICH, JEFFREY	3	E-1355	0700-1900	MORGAN SUMMIT
ENG3 WRF E603			OTTOSEN, MICHAEL	3	E-20352	0700-1900	MORGAN SUMMIT
ENG3 LNF E312				3	E-20439	0700-1900	MORGAN SUMMIT
ENG3 LNF E16				3	E-20440	0700-1900	MORGAN SUMMIT
ENG3 LNF E14				3	E-20441	0700-1900	MORGAN SUMMIT
ENGT3 TRI STATE					E-20442	0700-1900	MORGAN SUMMIT
ENGT6 STONE MTN				3	E-20443	0700-1900	MORGAN SUMMIT
ENG3 LBF E601			WILSON, DENNIS	8	E-20445	0700-1900	MORGAN SUMMIT
W/T OILER E-20446				1	E-20446	0700-1900	MORGAN SUMMIT

6. Work Assignments:
Patrol around all structures within Branch 13 and along HWY 36.

7. Special Instructions: *EMPF HAWKINS / EMPF FERRIS BRANCH 13 RESOURCE*****
Continue with 2 minute get away time.

8. Communications							
Name	Ch	Function	Rx Freq	Rx Tone	Tx Freq	Tx Tone	Notes
NIFC C10	2	COMMAND	170.4125	000.0	165.9625	T2 - 123.0	DYER MTN.
CDF T29	8	TACTICAL	151.3475	T16 192.8	151.3475	T16 192.8	LASSEN IA
CDF T18	14	A/G TACTICAL	159.3450	T16 192.8	159.3450	T16 192.8	A/G TACTICAL
CALCORD	15	MEDICAL	156.0750	T6 156.7	156.0750	T6 156.7	
AIRGUARD	16	AIRGUARD	168.6250	000.0	168.6250	T1 110.9	

9. Prepared by: Name:	M. Selzer	RESL	Signature:
ICS 204	Date/Time: 8/15/2021	2200	Personnel Count: 30

ASSIGNMENT LIST (ICS 204 WF)

CONTROLLED UNCLASSIFIED
INFORMATION//BASIC

1. Incident Name:	2. Operational Period:	3. Branch	Division
DIXIE WEST ZONE	Date From: 08/16/21 Date To: 08/17/21	16	R
Lassen Sector	Time From: 0700 Time To: 0700		

4. Operations Personnel:		Page 1 of 2	Romeo
Operations Section Chief: M. Brunton	Night Ops: E. Schwab		
Branch Director: G. Boston	Branch Safety: R. Barrier / B. Lee (T) / T. Becerra (T)		
Division/Group Supervisor: K. Swope	Air Attack:		

5. Resources Assigned:	** Resources Below in Bold are 12 Hour **						
Resource Identifier	ALS	LWD	Leader	Personnel	Request #	Hours	Reporting Location
STC XYU 3300C			GARDNER, BOBBY	19	E-399	0700-0700	DP 140
STC						0700-0700	DP 140
T/F XCA 4053			DOWNS, MICHAEL	18	E-1109	0700-0700	DP 140
T/F OES 4807			SMITH, JIM	17	E-1110	0700-0700	DP 140
STG						0700-0700	DP 140
DOZ PVT E-455			NOBLE, ROBERT	2	E-455	0700-0700	DP 140
DOZ PVT E-460			BARAJAS, CONNOR	2	E-460	0700-0700	DP 140
DOZ PVT E-1083			HART, CHANCE	2	E-1083	0700-0700	DP 140
DOZ PVT E-1433			COOKSON, SAM	2	E-1433	0700-0700	DP 140
DOZ						0700-0700	DP 140
DOZ						0700-0700	DP 140
W/T PVT E-965			GINGERICH, BRYAN	2	E-965	0700-0700	DP 140
W/T PVT E-1061			HURL, DENNIS	2	E-1061	0700-0700	DP 140
W/T PVT E-1359			PRICKETT, RON	1	E-1359	0700-1900	DP 140
W/T PVT E-1370			COUTLER, BOB	2	E-1370	0700-0700	DP 140
W/T PVT E-1371			LUNTEY, DENISE	2	E-1371	0700-0700	DP 140
W/T PVT E-1379			WILSO, VANCOIS	2	E-1379	0700-0700	DP 140
MAST						0700-1900	DP 140

6. Work Assignments:
 Construct control lines as direct as possible.
 Construct contingency line on Road 10.
 Fall trees that will threaten control line.
 Fall hazard trees.
 Improve and hold control lines.

7. Special Instructions:
 All line supervisors check in with the cost share team at the end of your shift
 Sensitive avoidance areas are flagged in red and black striped flagging. Work with Resource Advisors (REAF) on identification and protection.

8. Communications

Name	Ch	Function	Rx Freq	Rx Tone	Tx Freq	Tx Tone	Notes
NIFC C91	3	COMMAND	173.9750	N/A	165.4625	T2 - 123.0	SHAFFER MTN
NIFC T1	10	TACTICAL	168.0500N	T2 - 123.0	168.0500N	T2 - 123.0	
CDF T18	14	A/G TACTICAL	159.3450	T16 192.8	159.3450	T16 192.8	A/G TACTICAL
CALCORD	15	MEDICAL	156.0750	T6 156.7	156.0750	T6 156.7	
AIRGUARD	16	AIRGUARD	168.6250	000.0	168.6250	T1 110.9	

9. Prepared by: Name:	M. Selzer	RESL	Signature:
ICS 204	Date/Time: 8/15/2021 2200	Personnel Count: 73	

NIMS IAP

CONTROLLED UNCLASSIFIED INFORMATION//BASIC

ASSIGNMENT LIST (ICS 204 WF)

CONTROLLED UNCLASSIFIED
INFORMATION//BASIC

1. Incident Name: DIXIE WEST ZONE Lassen Sector	2. Operational Period: Date From: 08/16/21 Date To: 08/17/21 Time From: 0700 Time To: 0700	3. Branch Division 16 T
---	---	--

4. Operations Personnel:		Page 1 of 2 Tango
Operations Section Chief: M. Brunton Branch Director: G. Boston Division/Group Supervisor: 9112C McFARREN	Night Ops: E. Schwab Branch Safety: R. Barrier / B. Lee (T) / T. Becerra (T) Air Attack:	

5. Resources Assigned:		** Resources Below in Bold are 12 Hour **					
Resource Identifier	ALS	LWD	Leader	Personnel	Request #	Hours	Reporting Location
STC MEU 9112C			McFARREN, MICHAEL	20	E-117	0700-0700	WESTWOOD STAGING
STA ORC 1400A			HARPER, DAVID	22	E-956	0700-0700	WESTWOOD STAGING
CRW CNA 509			BARAJAS, ED	24	C-256.3	0700-1900	WESTWOOD STAGING
CRW CNA 510			ESQUEDA, NICK	23	C-256.6	0700-1900	WESTWOOD STAGING
STL LNU 9144L			BOHAN, DREW	9	E-916	0700-0700	WESTWOOD STAGING
DOZ PVT E-458			HATLER, TIM	2	E-458	0700-0700	WESTWOOD STAGING
DOZ PVT E-608			DUNN, BRAD	2	E-608	0700-0700	WESTWOOD STAGING
DOZ PVT E-609			WILBER, RANDY	2	E-609	0700-0700	WESTWOOD STAGING
DOZ PVT E-709			TAYLOR, JUAN	2	E-709	0700-0700	WESTWOOD STAGING
DOZ PVT E-731			DECUIR, CONNOR	2	E-731	0700-1900	WESTWOOD STAGING
DOZ PVT E-1020			WALKER, BRISTEN	2	E-1020	0700-0700	WESTWOOD STAGING
W/T PVT E-1062			BROWN, DAVE	2	E-1062	0700-0700	WESTWOOD STAGING
W/T PVT E-1070			WILLIAMS, TIM	2	E-1070	0700-0700	WESTWOOD STAGING
W/T PVT E-1360			KITCHENS, BRIAN	2	E-1360	0700-0700	WESTWOOD STAGING
W/T PVT E-1374			LONG, NATHAN	2	E-1374	0700-0700	WESTWOOD STAGING
W/T PVT E-1377			CORP, NOAH	1	E-1377	0700-1900	WESTWOOD STAGING
W/T PVT E-1387			OWENS, JIM	2	E-1387	0700-0700	WESTWOOD STAGING
W/T PVT E-1389			MONTELLI, JON	1	E-1389	0700-1900	WESTWOOD STAGING

6. Work Assignments:
 Construct control lines as direct as possible.
 Plan secondary control lines, begin if possible.
 Prepare indirect control line for possible firing operation.
 Fall trees that will threaten control line.
 Fall hazard trees.

7. Special Instructions:*EMPF SHAFER / EMTF HANEY DIV T / DIV U RESOURCE*****
 All line supervisors check in with the cost share team at the end of your shift
 Sensitive avoidance areas are flagged in red and black striped flagging. Work with Resource Advisors (REAF) on identification and protection.

8. Communications

Name	Ch	Function	Rx Freq	Rx Tone	Tx Freq	Tx Tone	Notes
NIFC C91	3	COMMAND	173.9750	N/A	165.4625	T2 - 123.0	SHAFFER MTN
VFIRE 26	9	TACTICAL	154.3025	T6 156.7	154.3025	T6 156.7	
CDF T18	14	A/G TACTICAL	159.3450	T16 192.8	159.3450	T16 192.8	A/G TACTICAL
CALCORD	15	MEDICAL	156.0750	T6 156.7	156.0750	T6 156.7	
AIRGUARD	16	AIRGUARD	168.6250	000.0	168.6250	T1 110.9	

9. Prepared by: Name: M. Selzer RESL Signature:

ICS 204 Date/Time: 8/15/2021 2200 Personnel Count: 122

ASSIGNMENT LIST (ICS 204 WF)

CONTROLLED UNCLASSIFIED
INFORMATION//BASIC

1. Incident Name: DIXIE WEST ZONE Lassen Sector	2. Operational Period: Date From: 08/16/21 Date To: 08/17/21 Time From: 0700 Time To: 0700	3. Branch Division 16 T
---	---	--

Page 2 of 2 **Tango**

4. Operations Personnel:	
Operations Section Chief: M. Brunton Branch Director: G. Boston Division/Group Supervisor:	Night Ops: E. Schwab Branch Safety: R. Barrier / B. Lee (T) / T. Becerra (T) Air Attack:

5. Resources Assigned:		** Resources Below in Bold are 12 Hour **					
Resource Identifier	ALS	LWD	Leader	Personnel	Request #	Hours	Reporting Location
W/T PVT E-1394			EVANS, LEWIS	1	E-1394	0700-1900	WESTWOOD STAGING
TFLD BOLOGNINI			BOLOGNINI, DAVID	1	O-634	0700-0700	WESTWOOD STAGING
FALM PVT O-928 → DIV R			COFFEY, DAVID	2	O-928	0700-1900	WESTWOOD STAGING
REAF OLIN			OLIN, GRANT	1	O-20758	0700-1900	WESTWOOD STAGING
ARCH SEGROVES			SEGROVES, ADAM	1	O-21044	0700-1900	WESTWOOD STAGING
DOZ PVT E-1690 ←			LASSEN HE GRP				
DOZ PVT E-1432 ←			LASSEN HE GRP				
SKD PVT E-1232 -			UNASSIGNED				

6. Work Assignments:
 Construct control lines as direct as possible.
 Plan secondary control lines, begin if possible.
 Prepare indirect control line for possible firing operation.
 Fall trees that will threaten control line.
 Fall hazard trees.

7. Special Instructions:*EMPF SHAFER / EMTF HANEY DIV T / DIV U RESOURCE*****
 All line supervisors check in with the cost share team at the end of your shift
 Sensitive avoidance areas are flagged in red and black striped flagging. Work with Resource Advisors (REAF) on identification and protection.

8. Communications							
Name	Ch	Function	Rx Freq	Rx Tone	Tx Freq	Tx Tone	Notes
NIFC C91	3	COMMAND	173.9750	N/A	165.4625	T2 - 123.0	SHAFFER MTN
VFIRE 26	9	TACTICAL	154.3025	T6 156.7	154.3025	T6 156.7	
CDF T18	14	A/G TACTICAL	159.3450	T16 192.8	159.3450	T16 192.8	A/G TACTICAL
CALCORD	15	MEDICAL	156.0750	T6 156.7	156.0750	T6 156.7	
AIRGUARD	16	AIRGUARD	168.6250	000.0	168.6250	T1 110.9	

9. Prepared by: Name:	M. Selzer	RESL	Signature:
ICS 204	Date/Time: 8/15/2021	2200	Personnel Count: 6

ASSIGNMENT LIST (ICS 204 WF)

CONTROLLED UNCLASSIFIED
INFORMATION//BASIC

1. Incident Name: DIXIE WEST ZONE Lassen Sector	2. Operational Period: Date From: 08/16/21 Date To: 08/17/21 Time From: 0700 Time To: 0700	3. Branch Division 16 U Page 1 of 3 Uniform
---	---	--

4. Operations Personnel:	
Operations Section Chief: M. Brunton Branch Director: G. Boston Division/Group Supervisor: J. Spindler (T)	Night Ops: E. Schwab Branch Safety: R. Barrier / B. Lee (T) / T. Becerra (T) Air Attack:

5. Resources Assigned:		** Resources Below in Bold are 12 Hour **					
Resource Identifier	ALS	LWD	Leader	Personnel	Request #	Hours	Reporting Location
STA						0700-0700	DP 116
STA						0700-0700	DP 116
STA						0700-0700	DP 116
STC TGU 9250C DMOR			BROWN, MATT	21	E-422	0700-0700	DP 116
STC TCU 9443C			IMWACH, BT	20	E-1572	0700-0700	DP 116
T/F XSI 2			EVANS, JOHN	13	E-1092	0700-0700	DP 116
STG						0700-0700	DP 116
STG						0700-0700	DP 116
STL MMU 9428L			WOLFORD, KEITH	7	E-440	0700-0700	DP 116
DOZ SCU 1641			POTTER, DEAN	4	E-128	0700-0700	DP 116
DOZ PVT E-587			RESTAD, BRUCE	4	E-587	0700-0700	DP 116
DOZ PVT E-590			MARANA, LUCAS	2	E-590	0700-0700	DP 116
DOZ PVT E-595			WATERMAN, TIM	2	E-595	0700-0700	DP 116
DOZ PVT E-696			HOLMES, DEE	2	E-696	0700-0700	DP 116
DOZ PVT E-1021 Ø			CASTRO, KEVIN	2	E-1021	0700-0700	DP 116
DOZ PVT E-1400			ELLIS, RYAN	1	E-1400	0700-1900	DP 116
DOZ PVT E-1416			MCGOWAN, HENERY	2	E-1416	0700-0700	DP 116
DOZ PVT E-1421			MATHIS, JOE	2	E-1421	0700-0700	DP 116

6. Work Assignments:
 Construct control lines as direct as possible.
 Fall trees that will threaten control line.
 Fall hazard trees.
 Prepare indirect control line for possible firing operation.
 Improve and hold control lines.
 Mop up 150 feet or 100%.

7. Special Instructions:*EMPF SHAFER / EMTF HANEY DIV T / DIV U RESOURCE*****
 All line supervisors check in with the cost share team at the end of your shift
 Sensitive avoidance areas are flagged in red and black striped flagging. Work with Resource Advisors (REAF) on identification and protection.

8. Communications

Name	Ch	Function	Rx Freq	Rx Tone	Tx Freq	Tx Tone	Notes
NIFC C91	3	COMMAND	173.9750	N/A	165.4625	T2 - 123.0	SHAFFER MTN
NIFC T2	11	TACTICAL	168.2000N	T2 - 123.0	168.2000N	T2 - 123.0	
CDF T18	14	A/G TACTICAL	159.3450	T16 192.8	159.3450	T16 192.8	A/G TACTICAL
CALCORD	15	MEDICAL	156.0750	T6 156.7	156.0750	T6 156.7	
AIRGUARD	16	AIRGUARD	168.6250	000.0	168.6250	T1 110.9	

9. Prepared by: Name: M. Seizer RESL Signature:

ICS 204 Date/Time: 8/15/2021 2200 Personnel Count: 62

ASSIGNMENT LIST (ICS 204 WF)

CONTROLLED UNCLASSIFIED
INFORMATION/BASIC

1. Incident Name: DIXIE WEST ZONE Lassen Sector	2. Operational Period: Date From: 08/16/21 Date To: 08/17/21 Time From: 0700 Time To: 0700	3. Branch Division 16 U
---	---	--

4. Operations Personnel: Operations Section Chief: M. Brunton Branch Director: G. Boston Division/Group Supervisor: J. Spindler (T)		Night Ops: E. Schwab Branch Safety: R. Barrier / B. Lee (T) / T. Becerra (T) Air Attack:
--	--	--

5. Resources Assigned:		** Resources Below in Bold are 12 Hour **					
Resource Identifier	ALS	LWD	Leader	Personnel	Request #	Hours	Reporting Location
W/T PVT E-276			WHARFF, ALAN	1	E-276	0700-1900	DP 116
W/T PVT E-640			HASTINGS, SCOTT	2	E-640	0700-0700	DP 116
W/T PVT E-716			ROMO, GABRIEL	2	E-716	0700-0700	DP 116
W/T PVT E-722			KUSALICH, NATHAN	2	E-722	0700-0700	DP 116
W/T PVT E-960			WOOTEN, BILLY	2	E-960	0700-0700	DP 116
W/T PVT E-1055			COON, MIKE	2	E-1055	0700-0700	DP 116
W/T PVT E-1060			SANTOS, TED	2	E-1060	0700-0700	DP 116
W/T PVT E-1265			MARYMEE, JACK	2	E-1265	0700-0700	DP 116
W/T PVT E-1378			GRANT, HANNA	1	E-1378	0700-1900	DP 116
W/T PVT E-1380			HURLIMAN, FRANK	1	E-1380	0700-1900	DP 116
W/T PVT E-1392			HUNT, JACK	2	E-1392	0700-1900	DP 116
MAST						0700-1900	DP 116
EXC PVT E-225			FUNES, TOMMY	1	E-225	0700-1900	DP 116
FEL PVT E-1117			TAYLOR, WES		E-1117	0700-1900	DP 116
SKD						0700-1900	DP 116
SKD						0700-1900	DP 116
HEQB COLLAMER			COLLAMER, SARAH A	1	O-1224	0700-0700	DP 116
HEQB ETULAIN (T)			ETULAIN, FRANK	1	O-923	0700-0700	DP 116

6. Work Assignments:
 Construct control lines as direct as possible.
 Fall trees that will threaten control line.
 Fall hazard trees.
 Prepare indirect control line for possible firing operation.
 Improve and hold control lines.
 Mop up 150 feet or 100%.

7. Special Instructions:*EMPF SHAFER / EMTF HANEY DIV T / DIV U RESOURCE*****
 All line supervisors check in with the cost share team at the end of your shift
 Sensitive avoidance areas are flagged in red and black striped flagging. Work with Resource Advisors (REAF) on identification and protection.

8. Communications

Name	Ch	Function	Rx Freq	Rx Tone	Tx Freq	Tx Tone	Notes
NIFC C91	3	COMMAND	173.9750	N/A	165.4625	T2 - 123.0	SHAFFER MTN
NIFC T2	11	TACTICAL	168.2000N	T2 - 123.0	168.2000N	T2 - 123.0	
CDF T18	14	A/G TACTICAL	159.3450	T16 192.8	159.3450	T16 192.8	A/G TACTICAL
CALCORD	15	MEDICAL	156.0750	T6 156.7	156.0750	T6 156.7	
AIRGUARD	16	AIRGUARD	168.6250	000.0	168.6250	T1 110.9	

9. Prepared by: Name: M. Selzer RESL Signature:

ICS 204 Date/Time: 8/15/2021 2200 Personnel Count: 22

ASSIGNMENT LIST (ICS 204 WF)

CONTROLLED UNCLASSIFIED
INFORMATION//BASIC

1. Incident Name:	2. Operational Period:	3. Branch	Division
DIXIE WEST ZONE	Date From: 08/16/21 Date To: 08/17/21 Time From: 0700 Time To: 0700	16	Lassen Hvy Eq GRP
Lassen Sector		Page 1 of 3	

4. Operations Personnel:	
Operations Section Chief: M. Brunton	Night Ops: E. Schwab
Branch Director: G. Boston	Branch Safety: R. Barrier / B. Lee (T) / T. Becerra (T)
Division/Group Supervisor: S. Volmer	Air Attack:

5. Resources Assigned:		** Resources Below in Bold are 12 Hour **					
Resource Identifier	ALS	LWD	Leader	Personnel	Request #	Hours	Reporting Location
DOZ PVT E-459			NEESE, DAVID	2	E-459	0700-0700	DP 145
DOZ PVT E-588			ARIAS, LUIS	2	E-588	0700-0700	DP 145
DOZ PVT E-974			NORTON, TRACY	2	E-974	0700-0700	DP 145
DOZ PVT E-980			WISEMAN, ERWIN	2	E-980	0700-0700	DP 145
DOZ PVT E-982			GRIMES, SEAN	2	E-982	0700-0700	DP 145
DOZ PVT E-983			MILLER, MIKE	2	E-983	0700-0700	DP 145
DOZ PVT E-1073			MYERS, RAND	2	E-1073	0700-0700	DP 145
DOZ PVT E-1074			BOGGS, STEVE	2	E-1074	0700-0700	DP 145
DOZ PVT E-1076			HUMPHREY, KEVIN	2	E-1076	0700-0700	DP 145
DOZ PVT E-1077			SHERICK, JEFF	2	E-1077	0700-0700	DP 145
DOZ PVT E-1082			COOK, KENNETH	2	E-1082	0700-0700	DP 145
DOZ PVT E-1090 → DIV T			PERRY, BRETT	2	E-1090	0700-0700	DP 145
DOZ PVT E-1424			FORD, JOSEPH	2	E-1424	0700-0700	DP 145
DOZ PVT E-1426			GEVAS, DAVE	2	E-1426	0700-1900	DP 145
DOZ PVT E-1432 → DIV T			BECKER, CLARK	1	E-1432	0700-0700	DP 145
DOZ PVT E-1435			MILLER, ERIC	2	E-1435	0700-0700	DP 145
W/T PVT E-638			DOLER, DERRICK	2	E-638	0700-0700	DP 145
W/T PVT E-964			JONES, ERNEST	2	E-964	0700-0700	DP 145

6. Work Assignments:
 Construct contingency line from DP 145 along Bogard Buttes (32N09) and tie in with contingency group.
 Plan secondary control lines, begin if possible.
 Fall hazard trees.
 Backhaul all trash, hose and water.

7. Special Instructions:
 All line supervisors check in with the cost share team at the end of your shift
 Sensitive avoidance areas are flagged in red and black striped flagging. Work with Resource Advisors (REAF) on identification and protection.

8. Communications							
Name	Ch	Function	Rx Freq	Rx Tone	Tx Freq	Tx Tone	Notes
NIFC C95	4	COMMAND	170.1750	N/A	165.5750	T2 - 123.0	WESTWOOD
VFIRE 23	6	TACTICAL	154.2950N	T6 - 156.7	154.2950N	T6 - 156.7	
CDF T18	14	A/G TACTICAL	159.3450	T16 192.8	159.3450	T16 192.8	A/G TACTICAL
CALCORD	15	MEDICAL	156.0750	T6 156.7	156.0750	T6 156.7	
AIRGUARD	16	AIRGUARD	168.6250	000.0	168.6250	T1 110.9	

9. Prepared by: Name:		M. Selzer	RESL	Signature:
ICS 204	Date/Time: 8/15/2021	2200	Personnel Count: 35	

ASSIGNMENT LIST (ICS 204 WF)

CONTROLLED UNCLASSIFIED
INFORMATION/BASIC

1. Incident Name: DIXIE WEST ZONE Lassen Sector	2. Operational Period: Date From: 08/16/21 Date To: 08/17/21 Time From: 0700 Time To: 0700	3. Branch Division 16 Lassen Hvy Eq GRP
---	---	--

Page 2 of 3

4. Operations Personnel:	
Operations Section Chief: M. Brunton Branch Director: G. Boston Division/Group Supervisor: S. Volmer	Night Ops: E. Schwab Branch Safety: R. Barrier / B. Lee (T) / T. Becerra (T) Air Attack:

5. Resources Assigned:		** Resources Below in Bold are 12 Hour **					
Resource Identifier	ALS	LWD	Leader	Personnel	Request #	Hours	Reporting Location
MAS PVT E-240			HOLT, KELLY	1	E-240	0700-1900	DP 145
MAS PVT E-278			HOFFMAN, NATHAN	1	E-278	0700-1900	DP 145
MAS PVT E-320			BRAUN, RYAN	1	E-320	0700-1900	DP 145
MAS PVT E-326			KORHUNIAK, PAUL	1	E-326	0700-1900	DP 145
MAS PVT E-889			BYERS, CAMERON	1	E-889	0700-1900	DP 145
MAS PVT E-1436			SCHAPER, MICHAEL	2	E-1436	0700-1900	DP 145
EXC PVT E-331			BELOIT, BRAIN	1	E-331	0700-1900	DP 145
EXC PVT E-732			HOLLAND, CALEB	1	E-732	0700-1900	DP 145
EXC PVT E-783			CLARK, STEVE	1	E-783	0700-1900	DP 145
GRD PVT E-581			MASON, LUKE	1	E-581	0700-1900	DP 145
FEL PVT E-1116			SMITH, SHELDON	1	E-1116	0700-1900	DP 145
FEL PVT E-1118			TAYLOR, WES	1	E-1118	0700-1900	DP 145
FEL						0700-1900	DP 145
FEL						0700-1900	DP 145
SKD PVT E-1182			TAYLOR, WES	1	E-1182	0700-1900	DP 145
SKD PVT E-1130			MOOSIOS, LOUIS	1	E-1130	0700-0700	DP 145
SKD PVT E-1133			TAYLOR, WES	1	E-1133	0700-1900	DP 145
SKD PVT E-1231			TAYLOR, WES	1	E-1231	0700-1900	DP 145

6. Work Assignments:
 Construct contingency line from DP 145 along Bogard Buttes (32N09) and tie in with contingency group.
 Plan secondary control lines, begin if possible.
 Fall hazard trees.
 Backhaul all trash, hose and water.

7. Special Instructions:
 All line supervisors check in with the cost share team at the end of your shift
 Sensitive avoidance areas are flagged in red and black striped flagging. Work with Resource Advisors (REAF) on identification and protection.

8. Communications							
Name	Ch	Function	Rx Freq	Rx Tone	Tx Freq	Tx Tone	Notes
NIFC C95	4	COMMAND	170.1750	N/A	165.5750	T2 - 123.0	WESTWOOD
VFIRE 23	6	TACTICAL	154.2950N	T6 - 156.7	154.2950N	T6 - 156.7	
CDF T18	14	A/G TACTICAL	159.3450	T16 192.8	159.3450	T16 192.8	A/G TACTICAL
CALCORD	15	MEDICAL	156.0750	T6 156.7	156.0750	T6 156.7	
AIRGUARD	16	AIRGUARD	168.6250	000.0	168.6250	T1 110.9	

9. Prepared by: Name:	M. Selzer	RESL	Signature:
ICS 204	Date/Time: 8/15/2021	2200	Personnel Count: 17

ASSIGNMENT LIST (ICS 204 WF)

CONTROLLED UNCLASSIFIED
INFORMATION//BASIC

1. Incident Name:	2. Operational Period:	3. Branch	Division
DIXIE WEST ZONE	Date From: 08/16/21 Date To: 08/17/21 Time From: 0700 Time To: 0700	16	Lassen Hvy Eq GRP
Lassen Sector		Page 3 of 3	

4. Operations Personnel:	
Operations Section Chief: M. Brunton	Night Ops: E. Schwab
Branch Director: G. Boston	Branch Safety: R. Barrier / B. Lee (T) / T. Becerra (T)
Division/Group Supervisor: S. Volmer	Air Attack:

5. Resources Assigned:		** Resources Below in Bold are 12 Hour **					
Resource Identifier	ALS	LWD	Leader	Personnel	Request #	Hours	Reporting Location
SKD						0700-1900	DP 145
GDR PVT E-1177 → Div K			LEPAGE, JIM	2	E-1177	0700-1900	DP 145
HEQB FETROW (T) → ODD			FETROW, KYLE	1	O-770	0700-0700	DP 145
HEQB DUARTE (T)			DUARTE, BRIAN	1	O-1163	0700-0700	DP 145
TFLD MATTEWS			MATTEWS, JOSIAH	1	O-1174	0700-0700	DP 145
HEQB NIXON (T)			NIXON, GARRETT B	1	O-615	0700-1900 24	DP 145
HEQB						0700-0700	DP 145
HEQB						0700-0700	DP 145
HEQB						0700-0700	DP 145
HEQB						0700-0700	DP 145
FALM PVT O-929 → Div R				2	O-929	0700-1900	DP 145

6. Work Assignments:
 Construct contingency line from DP 145 along Bogard Buttes (32N09) and tie in with contingency group.
 Plan secondary control lines, begin if possible.
 Fall hazard trees.
 Backhaul all trash, hose and water.

7. Special Instructions:
 All line supervisors check in with the cost share team at the end of your shift
 Sensitive avoidance areas are flagged in red and black striped flagging. Work with Resource Advisors (REAF) on identification and protection.

8. Communications

Name	Ch	Function	Rx Freq	Rx Tone	Tx Freq	Tx Tone	Notes
NIFC C95	4	COMMAND	170.1750	N/A	165.5750	T2 - 123.0	WESTWOOD
VFIRE 23	6	TACTICAL	154.2950N	T6 - 156.7	154.2950N	T6 - 156.7	
CDF T18	14	A/G TACTICAL	159.3450	T16 192.8	159.3450	T16 192.8	A/G TACTICAL
CALCORD	15	MEDICAL	156.0750	T6 156.7	156.0750	T6 156.7	
AIRGUARD	16	AIRGUARD	168.6250	000.0	168.6250	T1 110.9	

9. Prepared by: Name:	M. Selzer	RESL	Signature:
ICS 204	Date/Time: 8/15/2021	2200	Personnel Count: 8

ASSIGNMENT LIST (ICS 204 WF)

CONTROLLED UNCLASSIFIED
INFORMATION//BASIC

1. Incident Name:	2. Operational Period:	3. Branch	Division
DIXIE WEST ZONE Westwood Sector	Date From: 08/16/21 Date To: 08/17/21 Time From: 0700 Time To: 0700	Lake	J
4. Operations Personnel:		Page 1 of 1	Juliet

Operations Section Chief: M. Brunton	Night Ops: E. Schwab
Branch Director: L. Ermigarat (T) MAGNUS	Branch Safety: R. Harris / R. Thomas (T)
Division/Group Supervisor: 9410C PACK	Air Attack:

5. Resources Assigned:		** Resources Below in Bold are 12 Hour **					
Resource Identifier	ALS	LWD	Leader	Personnel	Request #	Hours	Reporting Location
STC CZU 9170C			DELLAMONICA, JAKE	18	E-32	0700-0700	DP 100
STC TUU 9410C			PACK, RYAN DWS	18	E-1091	0700-0700	DP 100
STG CZU 9174G (CDCR)			QUAN, RYANN	34	C-147	0700-0700	DP 100
CRW CNA 503			FUENTES, JAVIER	23	C-254.11	0700-1900	DP 100
CRW CNA 504			GALLEGOS, STEVE	23	C-254.14	0700-1900	DP 100
CRW CNA 512			HURD, JEFFERY	23	C-256.12	0700-1900	DP 100
DOZ HUU 1240			PAUL, RICHARD	2	E-966	0700-0700	DP 100
W/T PVT E-871			HORN, RANDY	2	E-871	0700-0700	DP 100
W/T PVT E-872			AYERS, TIM	2	E-872	0700-0700	DP 100
W/T PVT E-873			BEARDSLEY, JESSIE	1	E-873	0700-1900	DP 100
W/T PVT E-875			GILL, LEVI	1	E-875	0700-1900	DP 100
W/T PVT E-962			HILL, CHARLES	2	E-962	0700-0700	DP 100
W/T PVT E-963			LANSDALE, JASON	2	E-963	0700-0700	DP 100
W/T PVT E-1054 OOS			GREEN, RUSTY	2	E-1054	0700-0700 12	DP 100
W/T PVT E-1059			BENDALL, JOHN	2	E-1059	0700-0700	DP 100
FALM PVT O-930			ODOM, DAVID	2	O-930	0700-1900	DP 100
REAF CLUCK Ø			CLUCK, DANIEL R	1	O-20759	0700-1900	DP 100
REAF MABE Ø			MABE, JEFF	1		0700-1900	DP 100

6. Work Assignments:
 Fall trees that will threaten control line.
 Fall hazard trees.
 Hold fire in planned lines.
 Mop up 300' or 100%.

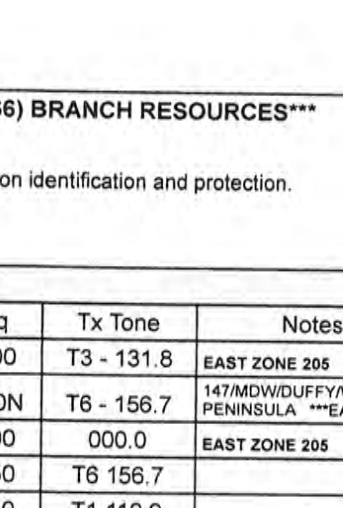
7. Special Instructions:
 Sensitive avoidance areas are flagged in red and black striped flagging. Work with Resource Advisors (REAF) on identification and protection.
 One way traffic in Carter Creek to DP 100. Out DP 100 Elam Carter Rd to HWY 32
 Identify surplus equipment, ie: hose, portable tanks, etc.

8. Communications							
Name	Ch	Function	Rx Freq	Rx Tone	Tx Freq	Tx Tone	Notes
NIFC C10	2	COMMAND	170.4125	000.0	165.9625	T2 - 123.0	DYER MTN.
VTAC13	12	TACTICAL	158.7375	T6 156.7	158.7375	T6 156.7	
CDF T18	14	A/G TACTICAL	159.3450	T16 192.8	159.3450	T16 192.8	A/G TACTICAL
CALCORD	15	MEDICAL	156.0750	T6 156.7	156.0750	T6 156.7	
AIRGUARD	16	AIRGUARD	168.6250	000.0	168.6250	T1 110.9	

9. Prepared by: Name: M. Selzer	RESL	Signature:
ICS 204	Date/Time: 8/15/2021 2200	Personnel Count: 159

ASSIGNMENT LIST (ICS 204 WF)

CONTROLLED UNCLASSIFIED
INFORMATION//BASIC

1. Incident Name: DIXIE WEST ZONE Westwood Sector		2. Operational Period: Date From: 08/16/21 Date To: 08/17/21 Time From: 0700 Time To: 0700				3. Branch Division Clear Meadow Group	
4. Operations Personnel: Operations Section Chief: M. Brunton Branch Director: M. Wallen E. SMITH Division/Group Supervisor: C. Zimmerman (T)		Night Ops: E. Schwab Branch Safety: J. Strickland / M. Flores (T) Air Attack:				Page 1 of 2	
5. Resources Assigned:		** Resources Below in Bold are 12 Hour **					
Resource Identifier	ALS	LWD	Leader	Personnel	Request #	Hours	Reporting Location
STC MVU 9333C			KREMENSKY, JOHN	17	E-1573	0700-0700	DP 260
STC TCU 9441C			BROWN, BRENTON	17	E-1575	0700-0700	DP 260
STC						0700-0700	DP 260
T/F OES 1809	X		MCDONALD, KRIS	18	E-473	0700-0700	DP 260
ENG PVT E-1336			MANNING, NICK	3	E-1336	0700-1900	DP 260
ENG ANT E-1350			FOX, JEFFREY	4	E-1350	0700-0700	DP 260
STG SHU 9243G (CDCR)			TAVALERO, GREG	33	C-170	0700-0700	DP 260
STG						0700-0700	DP 260
CRW CNA 505			MATTSON, DALE	23	C-255.5	0700-1900	DP 260
CRW CNA 506			BROOKER, STEVEN	23	C-255.8	0700-1900	DP 260
DOZ PVT E-613			AVILA, CRYSTAL	2	E-613	0700-0700	DP 260
DOZ PVT E-622			STEVENSON, THAD	2	E-622	0700-0700	DP 260
DOZ PVT E-695			VARIAN, GREG	2	E-695	0700-0700	DP 260
DOZ PVT E-822			HILL, STEVEN	2	E-822	0700-0700	DP 260
W/T PVT E-492			TRAVERSO, JOHN	1	E-492	0700-1900	DP 260
W/T PVT E-639			ANDERSON, JACK	2	E-639	0700-0700	DP 260
W/T PVT E-1057			LATHAM, ROBERT	2	E-1057	0700-0700	DP 260
W/T PVT E-1058			TRAHAN, NICK	2	E-1058	0700-0700	DP 260
6. Work Assignments: Construct control lines as direct as possible. Mop up 300' or 100%. Insert hose lay to support firing operation. Prepare for firing operation.							
7. Special Instructions: ***EMTF HERRERA / EMTF DIAZ / REMS TEAM 1 (LOCATED AT DP 266) BRANCH RESOURCES*** ***All line supervisors check in with the cost share team at the end of your shift*** Sensitive avoidance areas are flagged in red and black striped flagging. Work with Resource Advisors (REAF) on identification and protection. ***SOLANO 4X4 AMBULANCE BRANCH RESOURCE***							
8. Communications							
Name	Ch	Function	Rx Freq	Rx Tone	Tx Freq	Tx Tone	Notes
NIFC C46	EZ4	COMMAND	171.0875	T3 - 131.8	164.6000	T3 - 131.8	EAST ZONE 205
VFIRE 22	5	TACTICAL	154.2650N	T6 - 156.7	154.2650N	T6 - 156.7	147/MDW/DUFFY/WESTWOOD PENINSULA ***EAST ZONE
AG TAC E	EZ14	A/G TACTICAL	169.1000	000.0	169.1000	000.0	EAST ZONE 205
CALCORD	15	MEDICAL	156.0750	T6 156.7	156.0750	T6 156.7	
AIRGUARD	16	AIRGUARD	168.6250	000.0	168.6250	T1 110.9	
9. Prepared by: Name:		M. Selzer		RESL		Signature: 	
ICS 204		Date/Time: 8/15/2021 2200		Personnel Count: 153			

NIMS IAP

CONTROLLED UNCLASSIFIED INFORMATION//BASIC

ASSIGNMENT LIST (ICS 204 WF)

CONTROLLED UNCLASSIFIED
INFORMATION//BASIC

1. Incident Name: DIXIE WEST ZONE	2. Operational Period: Date From: 08/16/21 Date To: 08/17/21 Time From: 0700 Time To: 0700	3. Branch Division Clear Duffy Group
--	---	---

Page 2 of 2

4. Operations Personnel:	
Operations Section Chief: M. Brunton	Night Ops: E. Schwab
Branch Director: M. Wallen E. SMITH	Branch Safety: J. Strickland / M. Flores (T)
Division/Group Supervisor: J. Pangburn	Air Attack:

5. Resources Assigned:	** Resources Below in Bold are 12 Hour **						
Resource Identifier	ALS	LWD	Leader	Personnel	Request #	Hours	Reporting Location
DOZ PVT E-1434			MCCULLOUGH, KYLE	2	E-1434	0700-0700	WESTWOOD STAGING
W/T PVT E-49			ALEXANDER, LUKE	2	E-49	0700-0700	WESTWOOD STAGING
W/T PVT E-1052			LOPEZ, JULIO	2	E-1052	0700-0700	WESTWOOD STAGING
W/T PVT E-1053			SANTANA, RICHARD	1	E-1053	0700-1900	WESTWOOD STAGING
W/T PVT E-1069			MASON, LUKE	2	E-1069	0700-1900	WESTWOOD STAGING
W/T PVT E-1368			LOWE, BOB	2	E-1368	0700-0700	WESTWOOD STAGING
W/T PVT E-1375			RAMSEY, RON	1	E-1375	0700-1900	WESTWOOD STAGING
W/T						0700-0700	WESTWOOD STAGING
W/T						0700-0700	WESTWOOD STAGING
SKD PVT E-513			CAMPBELL, MARK	1	E-513	0700-1900	WESTWOOD STAGING
SKD PVT E-1128			EVANS, SHANE	1	E-1128	0700-1900	WESTWOOD STAGING
HEQB HOUSER			HOUSER, IVAN	1	O-817	0700-0700	WESTWOOD STAGING
HEQB SCHALL ← MEXADOW GRP					O-916	0700-0700	WESTWOOD STAGING
FALB PVT O-1160			FORD, CHRISTOPHER	1	O-1160	0700-1900	WESTWOOD STAGING
FALM PVT O-931				2	O-931	0700-1900	WESTWOOD STAGING
FALM						0700-1900	WESTWOOD STAGING
FALM						0700-1900	WESTWOOD STAGING
FALM						0700-1900	WESTWOOD STAGING

6. Work Assignments:
 Construct control lines as direct as possible.
 Improve and hold control lines.
 Mop up 300' or 100%.
 Prepare for firing operation.

7. Special Instructions:*EMTF HERRERA / EMTF DIAZ / REMS TEAM 1 (LOCATED AT DP 266) BRANCH RESOURCES*****
 All line supervisors check in with the cost share team at the end of your shift
 SOLANO 4X4 BRANCH RESOURCE

8. Communications							
Name	Ch	Function	Rx Freq	Rx Tone	Tx Freq	Tx Tone	Notes
NIFC C46	EZ4	COMMAND	171.0875	T3 - 131.8	164.6000	T3 - 131.8	EAST ZONE 205
VFIRE 22	5	TACTICAL	154.2650N	T6 - 156.7	154.2650N	T6 - 156.7	147/MDW/DUFFY/WESTWOOD PENINSULA ***EAST ZONE
AG TAC E	EZ14	A/G TACTICAL	169.1000	000.0	169.1000	000.0	EAST ZONE 205
CALCORD	15	MEDICAL	156.0750	T6 156.7	156.0750	T6 156.7	
AIRGUARD	16	AIRGUARD	168.6250	000.0	168.6250	T1 110.9	

9. Prepared by: Name: M. Selzer RESL Signature:
ICS 204 Date/Time: 8/15/2021 2200 Personnel Count: 18

ASSIGNMENT LIST (ICS 204 WF)

CONTROLLED UNCLASSIFIED
INFORMATION//BASIC

1. Incident Name:		2. Operational Period:				3. Branch		Division	
DIXIE WEST ZONE		Date From: 08/16/21 Date To: 08/17/21				Susanville		River Group	
Westwood Sector		Time From: 0700 Time To: 0700							
4. Operations Personnel:						Page 1 of 2			
Operations Section Chief: M. Brunton				Night Ops: E. Schwab					
Branch Director: J. Loveless / B. Mctigue				Branch Safety: S. Link (T) / J. Mendence (T) / J. Fields (T) (12)					
Division/Group Supervisor: R. Garcia (T)				Air Attack:					
5. Resources Assigned:		** Resources Below in Bold are 12 Hour **							
Resource Identifier	ALS	LWD	Leader	Personnel	Request #	Hours	Reporting Location		
STC MMU 9422C			FAIRBANKS, SHAUN	17	E-1571	0700-0700	ICP		
STC XSN 2392C			HOLDEN, JEFF	20 22	E-842	0700-0700	ICP		
STC XSB 1521C			MCCOY, JIM	15	E-288	0700-0700	ICP		
T/F DIXIE #1						0700-1900	ICP		
TFLD CUNIFFE-OWEN			CUNLIFFE-OWEN, JEFF	1	O-1180	0700-1900	ICP		
TFLD COOPER			COOPER, JOSH	1	O-1175	0700-1900	ICP		
ENG3 TEXAS FIRE						0700-1900	ICP		
ENG3 SDPVT E-1344			CHRISTENSEN, LANCE	3	E-1344	0700-1900	ICP		
ENG3 GIO 231			YUNGKANS, JEFF	4	E-1342	0700-1900	ICP		
ENG4 ID PVT E15			OLVEDA, ANTHONY	4	E-1025	0700-1900	ICP		
ENG3 OUTBACK FIRE			JOHNSON, JEFF	3	E-1024	0700-1900	ICP		
STG MEU 9116G (CNA/CCC)			VALLERGA JR, CHRIS	35	C-171	0700-0700	ICP		
STG SCU 9163G (CF/CNA)			CARVALHO, ROBERT	34	C-35	0700-0700	ICP		
STG BDC 6230G (LG)			TOPOLESKI, MATT	33	C-194	0700-0700	ICP		
STG						0700-0700	ICP		
DOZ PVT E-599			TRESSLER, ARTIE	2	E-599	0700-0700	ICP		
DOZ PVT E-1419			YATES, GRANT	2	E-1419	0700-0700	ICP		
DOZ						0700-0700	ICP		
6. Work Assignments:									
Construct control lines as direct as possible.									
Prepare Structure Defense Plan.									
7. Special Instructions:									
All line supervisors check in with the cost share team at the end of your shift									
Sensitive avoidance areas are flagged in red and black striped flagging. Work with Resource Advisors (REAF) on identification and protection.									
8. Communications Rx Tx TONE									
Name	Ch	Function	Rx Freq	Rx Tone	Tx Freq	Tx Tone	Notes		
NIFC C95	B.4	COMMAND	170.1750	N/A	165.5750	T2 - 123.0	WESTWOOD		
VFIRE 25	8	TACTICAL	154.2875	T6 156.7	154.2875	T6 156.7			
CDF T18	14	A/G TACTICAL	159.3450	T16 192.8	159.3450	T16 192.8	A/G TACTICAL		
CALCORD	15	MEDICAL	156.0750	T6 156.7	156.0750	T6 156.7			
AIRGUARD	16	AIRGUARD	168.6250	000.0	168.6250	T1 110.9			
9. Prepared by: Name:			M. Selzer		RESL		Signature:		
ICS 204		Date/Time: 8/15/2021 2200			Personnel Count: 174				

ASSIGNMENT LIST (ICS 204 WF)

CONTROLLED UNCLASSIFIED
INFORMATION//BASIC

1. Incident Name: DIXIE WEST ZONE Westwood Sector	2. Operational Period: Date From: 08/16/21 Date To: 08/17/21 Time From: 0700 Time To: 0700	3. Branch Division Susanville River Group
---	---	--

4. Operations Personnel: Operations Section Chief: M. Brunton Branch Director: J. Loveless / B. Mctigue Division/Group Supervisor: R. Garcia (T)		Night Ops: E. Schwab Branch Safety: S. Link (T) / J. Mendence (T) / J. Fields (T) (12) Air Attack:
---	--	--

5. Resources Assigned:		** Resources Below in Bold are 12 Hour **					
Resource Identifier	ALS	LWD	Leader	Personnel	Request #	Hours	Reporting Location
DOZ						0700-0700	ICP
W/T PVT E-634			ZUURBIER, TOM	1	E-634	0700-1900	ICP
W/T PVT E-636			MILLER, JACK	2	E-636	0700-0700	ICP
W/T PVT E-727			FORDE, BOB	2	E-727	0700-0700	ICP
W/T PVT E-865			KITCHENS, RYAN	1	E-865	0700-1900	ICP
W/T PVT E-869			MORENO, JOSE	2	E-869	0700-0700	ICP
W/T PVT E-1381			RANDLEAS, SHERMAN	1	E-1381	0700-1900	ICP
W/T						0700-0700	ICP
W/T						0700-0700	ICP
HEQB HARVEY			HARVEY, JACK	1	O-612	0700-0700	ICP
HEQB						0700-0700	ICP
FALM PVT O-933				2	O-933	0700-1900	ICP
FALM PVT O-937			WILLIAMS, CHARLES	2	O-937	0700-1900	ICP
STC XSB 1521C					E-288	0700-0700	

6. Work Assignments:
Construct control lines as direct as possible.
Prepare Structure Defense Plan.

7. Special Instructions:
All line supervisors check in with the cost share team at the end of your shift
Sensitive avoidance areas are flagged in red and black striped flagging. Work with Resource Advisors (REAF) on identification and protection.

8. Communications *a/g TAC E CH14 a/g TACTICAL 169.1000 169.000 000 112 262044*

Name	Ch	Function	Rx Freq	Rx Tone	Tx Freq	Tx Tone	Notes
NIFC C95	B.4	COMMAND	170.1750	N/A	165.5750	T2 - 123.0	WESTWOOD
VFIRE 25	8	TACTICAL	154.2875	T6 156.7	154.2875	T6 156.7	
CDF T18	14	A/G TACTICAL	159.3450	T16 192.8	159.3450	T16 192.8	A/G TACTICAL
CALCORD	15	MEDICAL	156.0750	T6 156.7	156.0750	T6 156.7	
AIRGUARD	16	AIRGUARD	168.6250	000.0	168.6250	T1 110.9	

9. Prepared by: Name: M. Selzer RESL Signature:

ICS 204 Date/Time: 8/15/2021 2200 Personnel Count: 14

ASSIGNMENT LIST (ICS 204 WF)

CONTROLLED UNCLASSIFIED
INFORMATION//BASIC

1. Incident Name: <p style="text-align: center;">DIXIE WEST ZONE</p>	2. Operational Period: Date From: 08/16/21 Date To: 08/17/21 Time From: 0700 Time To: 0700	3. Branch Division Susanville Richmond Group
---	---	---

4. Operations Personnel:		Page 1 of 1
Operations Section Chief: M. Brunton	Night Ops: E. Schwab	
Branch Director: J. Loveless / B. Mctigue	Branch Safety:	
Division/Group Supervisor: McGOVERN	Air Attack:	

5. Resources Assigned:		** Resources Below in Bold are 12 Hour **					
Resource Identifier	ALS	LWD	Leader	Personnel	Request #	Hours	Reporting Location
STA OES 2805A			ABELSON, JOEL DAVID	20	E-951	0700-0700	ICP
STC LMU 9223C			WHITCHURCH, ROBERT	18	E-1098	0700-0700	ICP
STC OES 1870C			JIMINEZ, ARTURO	22	E-1101	0700-0700	ICP

6. Work Assignments:
 Prepare structures for defensive actions.
 Prepare Structure Defense Plan.

7. Special Instructions:

8. Communications A/G TAC E CH:14 A/G TACTICAL ^{Rx} 1109.1000 ^{Tx} 169.1000 ^{TONE} 000 AIR 2 GROUND							
Name	Ch	Function	Rx Freq	Rx Tone	Tx Freq	Tx Tone	Notes
NIFC C91	B.3	COMMAND	173.9750	N/A	165.4625	T2 - 123.0	SHAFFER MTN
NIFC T2	11	TACTICAL	168.2000N	T2 - 123.0	168.2000N	T2 - 123.0	
GDF T18	14	A/G TACTICAL	159.3450	T16 192.8	159.3450	T16 192.8	A/G TACTICAL
CALCORD	15	MEDICAL	156.0750	T6 156.7	156.0750	T6 156.7	
AIRGUARD	16	AIRGUARD	168.6250	000.0	168.6250	T1 110.9	

9. Prepared by: Name: M. Selzer RESL Signature:

ICS 204 Date/Time: 8/15/2021 2200 Personnel Count: 60

ASSIGNMENT LIST (ICS 204 WF)

CONTROLLED UNCLASSIFIED
INFORMATION/BASIC

1. Incident Name: DIXIE WEST ZONE	2. Operational Period: Date From: 08/16/21 Date To: 08/17/21 Time From: 0700 Time To: 0700	3. Branch Division Janesville Contingency Wildcat Group
--	---	---

4. Operations Personnel:		Page 1 of 4
Operations Section Chief: M. Brunton	Night Ops: E. Schwab	
Branch Director: J. Ehrlich / J. Gaines	Branch Safety:	
Division/Group Supervisor: B. Brady	Air Attack:	

5. Resources Assigned:		** Resources Below in Bold are 12 Hour **					
Resource Identifier	ALS	LWD	Leader	Personnel	Request #	Hours	Reporting Location
STC LNU 9143C			NOVAK, JASON	17	E-1096	0700-0700	ICP
STC CZU 9171C			SIMMONS, BOB	17	E-119	0700-0700	ICP
STC XSB 1521C → RIVER			MCCOY, JIM	15	E-288	0700-0700	ICP
STC XME 2150C			FRANKLIN, MITCH	17	E-1094	0700-0700	ICP
STG MEU 9113G (CF)			DELAY, MIKE	33	C-160	0700-0700	ICP
STG HUU 9122G (CDCR)			MURPHEY, BRETT	28	C-149	0700-0700	ICP
STG TGU 9253G (CF)			MCGUIRE, JESSE	31	C-169	0700-0700	ICP
STG AEU 9275G			GRANBOIS, DOUG	34	C-146	0700-0700	ICP
STG						0700-0700	ICP
CRW						0700-0700	ICP
DOZ LNU 1442			DERICKSON, NILS	3	E-15	0700-0700	ICP
DOZ PVT E-618			DUNLAP, DAVID	2	E-618	0700-0700	ICP
DOZ PVT E-821 → GRADE			CRUNKILPON, LARRY	2	E-821	0700-0700	ICP
DOZ PVT E-968			DOUD, BRETT	2	E-968	0700-0700	ICP
DOZ PVT E-975 → GRADE			CARLTON, RODNEY	2	E-975	0700-0700	ICP
DOZ PVT E-976			MONTZ, JOHN	2	E-976	0700-0700	ICP
DOZ PVT E-977 → GRADE			DUNLAP, JIM	2	E-977	0700-0700	ICP
DOZ PVT E-978			DOMINIKUS, ROBERT	2	E-978	0700-1900	ICP

6. Work Assignments:
 Construct control lines as direct as possible.
 Hold fire in planned lines.
 Prepare structures for defensive actions.
 Prepare Structure Defense Plan.

7. Special Instructions:

8. Communications RX TX TONE							
Name	Ch	Function	Rx Freq	Rx Tone	Tx Freq	Tx Tone	Notes
NIFC C91	B.3	COMMAND	173.9750	N/A	165.4625	T2 - 123.0	SHAFFER MTN
VFIRE 23	6	TACTICAL	154.2950N	T6 - 156.7	154.2950N	T6 - 156.7	
CDF T18	14	A/G TACTICAL	159.3450	T16 192.8	159.3450	T16 192.8	A/G TACTICAL
CALCORD	15	MEDICAL	156.0750	T6 156.7	156.0750	T6 156.7	
AIRGUARD	16	AIRGUARD	168.6250	000.0	168.6250	T1 110.9	

9. Prepared by: Name: M. Selzer RESL Signature:
ICS 204 Date/Time: 8/15/2021 2200 Personnel Count: 209

ASSIGNMENT LIST (ICS 204 WF)

CONTROLLED UNCLASSIFIED
INFORMATION//BASIC

1. Incident Name: DIXIE WEST ZONE	2. Operational Period: Date From: 08/16/21 Date To: 08/17/21 Time From: 0700 Time To: 0700	3. Branch Division Janesville Contingency Wildcat Group
4. Operations Personnel: Operations Section Chief: M. Brunton Branch Director: J. Ehrlich / J. Gaines Division/Group Supervisor: B. Brady		Night Ops: E. Schwab Branch Safety: Air Attack:

Page 2 of 4

5. Resources Assigned:		** Resources Below in Bold are 12 Hour **					
Resource Identifier	ALS	LWD	Leader	Personnel	Request #	Hours	Reporting Location
DOZ PVT E-981			RAMIREZ, ERAN	2	E-981	0700-0700	ICP
DOZ PVT E-989			CALEB, HOLLAND	1	E-989	0700-1900	ICP
DOZ PVT E-1019				2	E-1019	0700-0700	ICP
DOZ PVT E-1071 ✗			SUTTLES, BRIAN	2	E-1071	0700-0700	ICP
DOZ PVT E-1075			DAVIS, PAYTON	2	E-1075	0700-0700	ICP
DOZ PVT E-1087			WELLS, TYLER	2	E-1087	0700-0700	ICP
DOZ PVT E-1088			NETTLES, BUCK	2	E-1088	0700-0700	ICP
DOZ PVT E-1298 → GRADE			LEPAGE, JIM	2	E-1298	0700-0700	ICP
DOZ PVT E-1299			PONCIA, CHRIS	2	E-1299	0700-0700	ICP
DOZ PVT E-1300			MOODY, CODY	2	E-1300	0700-0700	ICP
DOZ PVT E-1301			KIRKLAND, SHANE	2	E-1301	0700-0700	ICP
DOZ PVT E-1321			SLOTTE, JESSIE	2	E-1321	0700-0700	ICP
DOZ PVT E-1417			CURL, GENE	2	E-1417	0700-0700	ICP
DOZ PVT E-1418 → GRADE			REHWALD, ALEX	2	E-1418	0700-0700	ICP
DOZ PVT E-1420			SIMPSON, JOHN	1	E-1420	0700-1900	ICP
DOZ PVT E-1422 → GRADE			COKRELL, WESTERN	1	E-1422	0700-0700	ICP
DOZ PVT E-1429			ROBISON, KEVIN	2	E-1429	0700-0700	ICP
DOZ						0700-0700	ICP

6. Work Assignments:
 Construct control lines as direct as possible.
 Hold fire in planned lines.
 Prepare structures for defensive actions.
 Prepare Structure Defense Plan.

7. Special Instructions:

8. Communications A/G TAC E CH:14 A/G TACTICAL 169.1000 169.1000 000 1412 & GROUND							
Name	Ch	Function	Rx Freq	Rx Tone	Tx Freq	Tx Tone	Notes
NIFC C91	B.3	COMMAND	173.9750	N/A	165.4625	T2 - 123.0	SHAFFER MTN
VFIRE 23	6	TACTICAL	154.2950N	T6 - 156.7	154.2950N	T6 - 156.7	
GDF T18	14	A/G TACTICAL	159.3450	T16 192.8	159.3450	T16 192.8	A/G TACTICAL
CALCORD	15	MEDICAL	156.0750	T6 156.7	156.0750	T6 156.7	
AIRGUARD	16	AIRGUARD	168.6250	000.0	168.6250	T1 110.9	

9. Prepared by: Name: M. Selzer RESL Signature: *M Selzer*

ICS 204 Date/Time: 8/15/2021 2200 Personnel Count: 31

ASSIGNMENT LIST (ICS 204 WF)

CONTROLLED UNCLASSIFIED
INFORMATION/BASIC

1. Incident Name: DIXIE WEST ZONE	2. Operational Period: Date From: 08/16/21 Date To: 08/17/21 Time From: 0700 Time To: 0700	3. Branch Division Janesville Contingency Wildcat Group
4. Operations Personnel:		Page 3 of 4

Operations Section Chief: M. Brunton	Night Ops: E. Schwab
Branch Director: J. Ehrlich / J. Gaines	Branch Safety:
Division/Group Supervisor: B. Brady	Air Attack:

5. Resources Assigned:		** Resources Below in Bold are 12 Hour **					
Resource Identifier	ALS	LWD	Leader	Personnel	Request #	Hours	Reporting Location
DOZ						0700-0700	ICP
DOZ						0700-0700	ICP
DOZ						0700-0700	ICP
DOZ						0700-0700	ICP
W/T OES 61			MILLER, JEFF	2	E-20367	0700-0700	ICP
W/T PVT E-1064			LANG, HAROLD	2	E-1064	0700-0700	ICP
W/T PVT E-1363			ROWE, KEN	1	E-1363	0700-1900	ICP
W/T PVT E-1372			REDRICKSON, CAMERO	1	E-1372	0700-1900	ICP
W/T PVT E-1385			RICHIE, ALEX	1	E-1385	0700-0700	ICP
W/T PVT E-1391			KIMMICH, JACK	1	E-1391	0700-1900	ICP
W/T PVT E-1398			FORESTER, HUGH	2	E-1398	0700-0700	ICP
W/T PVT E-20095			CULP, THOMAS	1	E-20095	0700-1900	ICP
W/T PVT E-20373 → ♂			HOLT, GREGORY	1	E-20373	0700-1900	ICP
W/T						0700-1900	ICP
MAS PVT E-1224			SCHMAUS, RICK	1	E-1224	0700-1900	ICP
MAS PVT E-1442			PEZZI, ANTHONY	1	E-1442	0700-1900	ICP
MAS						0700-1900	ICP
EXC PVT E-778 → GRADE			MOORE, SONNY	1	E-778	0700-1900	ICP

6. Work Assignments:
 Construct control lines as direct as possible.
 Hold fire in planned lines.
 Prepare structures for defensive actions.
 Prepare Structure Defense Plan.

7. Special Instructions:

8. Communications <i>CH:14 169-1000 169.1000 000 AIR 2 GROUND</i>							
Name	Ch	Function	Rx Freq	Rx Tone	Tx Freq	Tx Tone	Notes
NIFC C91	B.3	COMMAND	173.9750	N/A	165.4625	T2 - 123.0	SHAFFER MTN
VFIRE 23	6	TACTICAL	154.2950N	T6 - 156.7	154.2950N	T6 - 156.7	
CDF T18	14	A/G TACTICAL	159.3450	T16 192.8	159.3450	T16 192.8	A/G TACTICAL
CALCORD	15	MEDICAL	156.0750	T6 156.7	156.0750	T6 156.7	
AIRGUARD	16	AIRGUARD	168.6250	000.0	168.6250	T1 110.9	

9. Prepared by: Name: M. Selzer RESL Signature: *Matthew*

ICS 204 Date/Time: 8/15/2021 2200 Personnel Count: 15

ASSIGNMENT LIST (ICS 204 WF)

CONTROLLED UNCLASSIFIED
INFORMATION//BASIC

1. Incident Name: DIXIE WEST ZONE	2. Operational Period: Date From: 08/16/21 Date To: 08/17/21 Time From: 0700 Time To: 0700	3. Branch Division Janesville Contingency Wildcat Group
4. Operations Personnel:		Page 4 of 4

Operations Section Chief: M. Brunton	Night Ops: E. Schwab
Branch Director: J. Ehrlich / J. Gaines	Branch Safety:
Division/Group Supervisor: B. Brady	Air Attack:

5. Resources Assigned:		** Resources Below in Bold are 12 Hour **					
Resource Identifier	ALS	LWD	Leader	Personnel	Request #	Hours	Reporting Location
EXC PVT E-1440 → GRADE			MCLERAN, RICHARD	1	E-1440	0700-1900	ICP
FEL PVT E-242 → GRADE			TOWNSEN, BRIAN	1	E-242	0700-1900	ICP
FEL PVT E-324 → GRADE			CRIST, JOSH	1	E-324	0700-1900	ICP
FEL PVT E-1120			GIBBS, WAYNE	1	E-1120	0700-1900	ICP
FEL						0700-1900	ICP
SKD PVT E-1132 → FSR			CRUCE, DAVID	2	E-1132	0700-1900	ICP
SKD PVT E-1183 → DIV K			WES, TAYLOR	1	E-1183	0700-1900	ICP
SKD PVT E-1229			EASTMAN, WESLEY	1	E-1229	0700-1900	ICP
HEQB STEISS (G)				1		0700-0700	ICP
HEQB TURNER			TURNER, CAMERON	1	O-924	0700-0700	ICP
FALM						0700-1900	ICP
FALM						0700-1900	ICP
TFLD ZINCHUK (T)			ZINCHUK, RICHARD	1	O-627	0700-0700	ICP
REAF BROWN			BROWN, SETH	1	O-21085	0700-1900	ICP
REAF LOMAHUKIUH			LOMAHUKIUH, MOLLY	1	O-21083	0700-1900	ICP
REAF GRAVER			GRAVER, NICK	1	O-21090	0700-1900	ICP
HEQB Simms							

6. Work Assignments:
 Construct control lines as direct as possible.
 Hold fire in planned lines.
 Prepare structures for defensive actions.
 Prepare Structure Defense Plan.

7. Special Instructions:

8. Communications **Rx TX TONE**
A/G TAC E CH:14 A/G TACTICAL 169.1000 169.1000 000 AIR 2 GROUND

Name	Ch	Function	Rx Freq	Rx Tone	Tx Freq	Tx Tone	Notes
NIFC C91	B.3	COMMAND	173.9750	N/A	165.4625	T2 - 123.0	SHAFFER MTN
VFIRE 23	6	TACTICAL	154.2950N	T6 - 156.7	154.2950N	T6 - 156.7	
CDF T18	14	A/G TACTICAL	159.3450	T16 192.8	159.3450	T16 192.8	A/G TACTICAL
CALCORD	15	MEDICAL	156.0750	T6 156.7	156.0750	T6 156.7	
AIRGUARD	16	AIRGUARD	168.6250	000.0	168.6250	T1 110.9	

9. Prepared by: Name: M. Selzer RESL Signature: *M. Selzer*

ICS 204 Date/Time: 8/15/2021 2200 Personnel Count: 14

ASSIGNMENT LIST (ICS 204 WF)

CONTROLLED UNCLASSIFIED
INFORMATION/BASIC

1. Incident Name: DIXIE WEST ZONE	2. Operational Period: Date From: 08/16/21 Date To: 08/17/21 Time From: 0700 Time To: 0700	3. Branch Division Janesville Contingency Grade Group
4. Operations Personnel: Operations Section Chief: M. Brunton Branch Director: J. Ehrlich / J. Gaines Division/Group Supervisor:		Night Ops: E. Schwab Branch Safety: Air Attack:

Page 1 of 1

5. Resources Assigned:	** Resources Below in Bold are 12 Hour **
-------------------------------	--

Resource Identifier	ALS	LWD	Leader	Personnel	Request #	Hours	Reporting Location
ENG3 JNV 424						0700-0700	JANESVILLE FIRE STATION
W/T JNV 432						0700-0700	JANESVILLE FIRE STATION
W/T PVT E-1388			JONES, ED	1	E-1388	0700-1900	JANESVILLE FIRE STATION
W/T PVT E-1393			SCHOLTEN, DUTCH	1	E-1393	0700-1900	JANESVILLE FIRE STATION
W/T PVT E-1396			WILBER, RANDY	1	E-1396	0700-1900	JANESVILLE FIRE STATION
DOZ PVT E-1399			TUFTS, JUSTIN	2	E-1399	0700-0700	JANESVILLE FIRE STATION
SKD PVT E-1129 ← DIV K							
DOZ PVT E-821 ← WILDCAT							
DOZ PVT E-975 ← WILDCAT							
DOZ PVT E-977 ← WILDCAT							
DOZ PVT E-1298 ← WILDCAT							
DOZ PVT E-1419 ← WILDCAT							
DOZ PVT E-1422 ← WILDCAT							
EXC PVT E-778 ← WILDCAT							
EXC PVT E-1440 ← WILDCAT							
FEL PVT E-242 ← WILDCAT							
FEL PVT E-324 ← WILDCAT							
TFLD DAGUE - NEW DAGUE, KYLE 0-1231							

6. Work Assignments: ~~DOZ PVT E-1129 ← DIV K~~
Respond to calls for service in Janesville.

7. Special Instructions:

8. Communications A/6 TAC F CH:14 A/6 TACTICAL 169.1000 169.1000 000 AIR 2 GROUND

Name	Ch	Function	Rx Freq	Rx Tone	Tx Freq	Tx Tone	Notes
NIFC C95	4	COMMAND	170.1750	N/A	165.5750	T2 - 123.0	WESTWOOD
VFIRE 24	7	TACTICAL	154.2725	T6 156.7	154.2725	T6 156.7	
ODF T18	14	A/G TACTICAL	159.3450	T16 192.8	159.3450	T16 192.8	A/G TACTICAL
CALCORD	15	MEDICAL	156.0750	T6 156.7	156.0750	T6 156.7	
AIRGUARD	16	AIRGUARD	168.6250	000.0	168.6250	T1 110.9	

9. Prepared by: Name: M. Selzer RESL Signature:

ICS 204 Date/Time: 8/15/2021 2200 Personnel Count: 5

ASSIGNMENT LIST (ICS 204 WF)

CONTROLLED UNCLASSIFIED
INFORMATION//BASIC

1. Incident Name: <p style="text-align: center;">DIXIE WEST ZONE</p>	2. Operational Period: Date From: 08/16/21 Date To: 08/17/21 Time From: 0700 Time To: 0700	3. Branch Division Janesville Contingency Christie Group
---	---	--

4. Operations Personnel:		Page 1 of 1
Operations Section Chief: M. Brunton	Night Ops: E. Schwab	
Branch Director: J. Ehrlich / J. Gaines	Branch Safety:	
Division/Group Supervisor:	Air Attack:	

5. Resources Assigned:		** Resources Below in Bold are 12 Hour **					
Resource Identifier	ALS	LWD	Leader	Personnel	Request #	Hours	Reporting Location
STA						0700-0700	JANESVILLE ELEMETARY
STA						0700-0700	JANESVILLE ELEMETARY
STC						0700-0700	JANESVILLE ELEMETARY
STC						0700-0700	JANESVILLE ELEMETARY
CRW						0700-0700	JANESVILLE ELEMETARY
CRW						0700-0700	JANESVILLE ELEMETARY
W/T						0700-0700	JANESVILLE ELEMETARY
W/T						0700-0700	JANESVILLE ELEMETARY
W/T						0700-0700	JANESVILLE ELEMETARY
W/T						0700-0700	JANESVILLE ELEMETARY

6. Work Assignments:
 Prepare structures for defensive actions.
 Prepare Structure Defense Plan.

7. Special Instructions:

8. Communications *A/G TACTICAL CH: 14 A/G TACTICAL 169.1000 169.1000 000 AIR 26 GROUP*

Name	Ch	Function	Rx Freq	Rx Tone	Tx Freq	Tx Tone	Notes
NIFC C91	3	COMMAND	173.9750	N/A	165.4625	T2 - 123.0	SHAFFER MTN
VFIRE 26	9	TACTICAL	154.3025	T6 156.7	154.3025	T6 156.7	
GDF T18	14	A/G TACTICAL	159.3450	T16 192.8	159.3450	T16 192.8	A/G TACTICAL
CALCORD	15	MEDICAL	156.0750	T6 156.7	156.0750	T6 156.7	
AIRGUARD	16	AIRGUARD	168.6250	000.0	168.6250	T1 110.9	

9. Prepared by: Name:	M. Selzer	RESL	Signature:
ICS 204	Date/Time: 8/15/2021	2200	Personnel Count: 0

ASSIGNMENT LIST (ICS 204 WF)

CONTROLLED UNCLASSIFIED
INFORMATION//BASIC

1. Incident Name: DIXIE WEST ZONE Butte Sector	2. Operational Period: Date From: 08/16/21 Date To: 08/17/21 Time From: 0700 Time To: 0700	3. Branch Division FSR Butte FSR
--	---	---

Page 1 of 3

4. Operations Personnel:	
Operations Section Chief: M. Brunton Branch Director: Division/Group Supervisor: D. Derby	Night Ops: E. Schwab Branch Safety: Air Attack:

5. Resources Assigned:	** Resources Below in Bold are 12 Hour **						
Resource Identifier	ALS	LWD	Leader	Personnel	Request #	Hours	Reporting Location
DOZ PVT E-809			ULSH, DALE	1	E-809	0700-1900	MAGALIA ICP
DOZ PVT E-1315						0700-1900	MAGALIA ICP
DOZ PVT E-1316						0700-1900	MAGALIA ICP
DOZ PVT E-1318			CARSON, CARY	1	E-1318	0700-1900	MAGALIA ICP
DOZ PVT E-1320			WURLITER, GEORGE	1	E-1320	0700-1900	MAGALIA ICP
DOZ PVT E-1333			WADDINGTON, CASEY	1	E-1333	0700-1900	MAGALIA ICP
W/T PVT E-44			WHEELER	1	E-44	0700-1900	MAGALIA ICP
W/T PVT E-46			MASTEL, WAYNE	1	E-46	0700-1900	MAGALIA ICP
W/T PVT E-47			RUHL, DAVID	1	E-47	0700-1900	MAGALIA ICP
W/T PVT E-48			FUNES, ANTHONY	1	E-48	0700-1900	MAGALIA ICP
W/T PVT E-64			KOEHLER, RYAN	1	E-64	0700-1900	MAGALIA ICP
W/T PVT E-65			KOEHLER, RYAN	1	E-65	0700-1900	MAGALIA ICP
W/T PVT E-80			LUCE, JERRY	2	E-80	0700-1900	MAGALIA ICP
W/T PVT E-81			DUDUSICK, KEITH	2	E-81	0700-1900	MAGALIA ICP
W/T PVT E-111			ELLE	2	E-111	0700-1900	MAGALIA ICP
W/T PVT E-112			KEVIN	1	E-112	0700-1900	MAGALIA ICP
W/T PVT E-115			BENSON, AL	1	E-115	0700-1900	MAGALIA ICP
W/T PVT E-267			SEABOURN, MIKE	1	E-267	0700-1900	MAGALIA ICP

6. Work Assignments:
Scout for repair needs.
Initiate repair work as directed by FSRs.

7. Special Instructions:
All line supervisors check in with the cost share team at the end of your shift

Sensitive avoidance areas are flagged in red and black striped flagging. Work with Resource Advisors (REAF) on identification and protection.

8. Communications							
Name	Ch	Function	Rx Freq	Rx Tone	Tx Freq	Tx Tone	Notes
NIFC C56	5	COMMAND	172.3500	000.0	163.0375	T2 123.0	BALD MTN.
VTAC12	11	TACTICAL	154.4525	T6 156.7	154.4525	T6 156.7	
CDF T18	14	A/G TACTICAL	159.3450	T16 192.8	159.3450	T16 192.8	A/G TACTICAL
CALCORD	15	MEDICAL	156.0750	T6 156.7	156.0750	T6 156.7	
AIRGUARD	16	AIRGUARD	168.6250	000.0	168.6250	T1 110.9	

9. Prepared by: Name: M. Selzer	RESL	Signature:	
ICS 204	Date/Time: 8/15/2021 2200	Personnel Count: 19	

ASSIGNMENT LIST (ICS 204 WF)

CONTROLLED UNCLASSIFIED
INFORMATION//BASIC

1. Incident Name: DIXIE WEST ZONE Butte Sector		2. Operational Period: Date From: 08/16/21 Date To: 08/17/21 Time From: 0700 Time To: 0700				3. Branch Division FSR Butte FSR	
4. Operations Personnel:						Page 2 of 3	
Operations Section Chief: M. Brunton Branch Director:				Night Ops: E. Schwab Branch Safety:			
Division/Group Supervisor: D. Derby				Air Attack:			
5. Resources Assigned:		** Resources Below in Bold are 12 Hour **					
Resource Identifier	ALS	LWD	Leader	Personnel	Request #	Hours	Reporting Location
W/T PVT E-297			GARR, TODD	2	E-297	0700-1900	MAGALIA ICP
W/T PVT E-491			DUNLOP, DON	1	E-491	0700-1900	MAGALIA ICP
W/T PVT E-504			BIRD, TAWNY	2	E-504	0700-1900	MAGALIA ICP
W/T PVT E-508			AGUILAR, NICK	2	E-508	0700-1900	MAGALIA ICP
W/T PVT E-724			McCONNELL, JOSHUA	1	E-724	0700-1900	MAGALIA ICP
W/T PVT E-863			SPURLOCK, HANK	1	E-863	0700-1900	MAGALIA ICP
W/T PVT E-867			THOENE, JAKE	2	E-867	0700-1900	MAGALIA ICP
W/T PVT E-874			KELSEY, JOHN	1	E-874	0700-1900	MAGALIA ICP
W/T PVT E-1366			CHRISTIANSEN, GREG	2	E-1366	0700-1900	24 MAGALIA ICP
W/T PVT E-1480			KEENE, ROBERT	2	E-1480	0700-1900	MAGALIA ICP
W/T PVT E-1532			WHARFF, STEVE	1	E-1532	0700-1900	MAGALIA ICP
MAS PVT E-223			WURLITZER, GEORGE	1	E-223	0700-1900	MAGALIA ICP
MAS PVT E-224			WURLITZER, GEORGE	1	E-224	0700-1900	MAGALIA ICP
MAS PVT E-313			KOEHLER, RYAN	1	E-313	0700-1900	MAGALIA ICP
MAS PVT E-774			GROTEGUTH, L	1	E-774	0700-1900	MAGALIA ICP
MAS PVT E-853			GRIDLEY, DANIEL	1	E-853	0700-1900	MAGALIA ICP
EXC PVT E-226			WUNSCH, ALEX	1	E-226	0700-1900	MAGALIA ICP
EXC PVT E-227			KOEHLER, RYAN	1	E-227	0700-1900	MAGALIA ICP
6. Work Assignments: Scout for repair needs. Initiate repair work as directed by FSRs. <i>+ W/T PVT E-503 ← DIV A/B/C/E/F/G/E</i> <i>+ SKID STEER PVT E-1132 ← WILDCAT</i>							
7. Special Instructions: ***All line supervisors check in with the cost share team at the end of your shift*** Sensitive avoidance areas are flagged in red and black striped flagging. Work with Resource Advisors (REAF) on identification and protection.							
8. Communications							
Name	Ch	Function	Rx Freq	Rx Tone	Tx Freq	Tx Tone	Notes
NIFC C56	5	COMMAND	172.3500	000.0	163.0375	T2 123.0	BALD MTN.
VTAC12	11	TACTICAL	154.4525	T6 156.7	154.4525	T6 156.7	
CDF T18	14	A/G TACTICAL	159.3450	T16 192.8	159.3450	T16 192.8	A/G TACTICAL
CALCORD	15	MEDICAL	156.0750	T6 156.7	156.0750	T6 156.7	
AIRGUARD	16	AIRGUARD	168.6250	000.0	168.6250	T1 110.9	
9. Prepared by: Name: M. Selzer RESL Signature:							
ICS 204		Date/Time: 8/15/2021 2200		Personnel Count: 24			

AIR OPERATIONS SUMMARY ICS-220

Incident Name and Incident Number EAST & WEST ZONES/ DIXIE 21-CABTU-009205	Sunrise 623	Startup 653	Cutoff 1928	Sunset 1058	Date Prepared Sunday, August 15, 2021	Prepared By Tim Shiffer
General Remarks, Safety Notes, Hazards, Air Operations Special Equipment, etc. TRACK ALL DIPSITE LOCATIONS / NUMBER OF DIPS / GALLONS TAKEN. TRACK ALL DROP LOCATIONS / NUMBER OF DROPS / GALLONS DROPPED ALL GPS DATA TO BE COLLECTED IN DEGREES..MINUTES..DECIMAL MINUTES FORMAT. AVOID Aerial Application of Retardant / Foam / Agent within 300' of Waterways, Bodies of Water, etc. If Retardant / Foam / Agent is Dropped Within These Areas Immediately Notify the AOB and Provide the Following Information: Lat / Long, Estimated Number of Gallons and a Map Detailing The Area.					Operational Period - Date Monday, August 16, 2021	
Aircraft Ordering: Command (CDF Command 1) use (T10) 107.2 Order All Aircraft through Susanville					Operational Period - Time 0700-0700	

WEST ZONE-(WEST COMMUNICATIONS)			
Frequencies	RX	Tone	TX
WEST AIR TACTICS	165.9875		165.9875
AIR / AIR TFR	125.1750		125.1750
WEST FIX WING BRIEFING	119.0750		119.0750
WEST COMMAND	170.4500		168.1000
WEST ROTOR VICTOR	128.0250		128.0250
WEST ROTOR BRIEFING	123.7250		123.7250
WEST A/G- Command	166.6000		166.6000
WEST A/G - Tactical	159.3450	T16-192.8	159.3450
TOLC (Eagle)	120.1250		120.1250
DECK (Battle Creek/Eagle)	168.3500		168.3500
TOLC (Battle Creek)	123.0250		123.0250

West Zone Helibases			
FAA #	Type	Make/Model	Helibase
G840	I	UH60G	Battle
35S	I	S64E	Battle
37S	I	S64E	Battle
91CH	I	BV107	Battle
71CH	I	CH47	Eagle
2CH	I	CH47	Eagle
5CH	I	BV234	Eagle
5CK	I	UH60	Battle
0FG	II	UH1H	Battle
22Z	II	212	Battle
3HL	II	212HP	Eagle
5AS	III	407	Eagle
3PD	III	AS350B3	Battle
4TV	III	AS350B2	Battle
6GM	III	206 L-4	Eagle
50R	III	AS350B2	Battle
22EA	III	206	Eagle
UR41	4	M2EA	

East Zone Helibases			
FAA #	Type	Make/Model	Helibase
2WM	I	KMAX	Quincy
73U	I	S61	Quincy
2PJ	I	UH60	Quincy
3AC	I	S64F	Nervino
9RH	I	KMAX	Quincy
3BH	I	UH60	Nervino
2BT (510)	II	212HP	Quincy
0PF (512)	II	212HP	Quincy
5TK (532)	II	Bell 205	Nervino
7XL	III	AS350B3	Nervino
553	III	Bel 407	Quincy
261	I	CL-415	Chico
262	I	CL-415	Chico
UR31	3	M600	

Guard Helicopters			
FAA #	Type	Make/Model	Helibase
G833	I	UH60	Battle
ALS Night Hoist			
Longline A-415			
Longline A-416			
Bucket A-456			

Tim Shiffer

AIR OPERATIONS SUMMARY ICS-220									
Incident Name and Incident Number			Time Prepared			Date Prepared		Prepared By	
EAST & WEST ZONES/ DIXIE 21-CABTU-009205			1800			Sunday, August 15, 2021		Tim Shiffer	
Sunrise 623			Shutdown 2028			Operational Period - Date		Operational Period - Time	
Cutoff 1928			Sunset 1058			Monday, August 16, 2021		0700-0700	

West Zone					East Zone				
Position	Name	Phone	Trainee	Phone	Position	Name	Phone	Trainee	Phone
AOBD	M. Stanford	(951) 545-8205			AOBD	W. Shook	(805) 458-1970		
AOBD (D)	T. Shiffer	(530) 448-2418			ASGS	M. Empey	(928) 245-1798		
ASGS	C. Wilson	(530) 448-2408	S. Ryan	(530) 559-8324	HEBM	D. Dale (Quincy)	530-515-0794	Brinkman	(530) 394-0961
HEBM	P. Bosco (Eagle)	(951) 973-2158			HEBM	McGinley (Nervino)	(661) 381-0974		
HEBM	M. Munson (Battle)	(707) 228-6646			HLCO	B. Rogers	(530) 310-3506		
ATGS	S. Hawkins	(530) 521-8748			HLCO	M. Muller	(559) 696-3878		
HLCO	D. Rhoads	(707) 391-6712			ATGS	B. Baker	(530) 394-8110		
HLCO	M. Deacon	(530) 412-1509	Kowalski	(951) 285-4958	UAS Pilot	S. Stroud	(208) 830-8596		
HLCO	T. Perkins	(949) 702-3868							
UAS Pilot	P. York	(530) 386-2147							

Tim Shiffer

ICS 205 - INCIDENT RADIO COMMUNICATIONS PLAN

CONTROLLED UNCLASSIFIED
INFORMATION/BASIC

1. Incident Name: DIXIE WEST ZONE Page 1 of 2		2. Date/Time Prepared Date: 08/15/2021 Time: 1930		3. Operational Period: Date From: 08/16/21 Time From: 0700 Date To: 08/17/21 Time To: 0700				
4. Communications								
Ch#	Function	Name	Assigned To	Rx Freq	Rx Tone	Tx Freq	Tx Tone	Notes
1	COMMAND	NIFC C2	BRANCH 1 / 5 / 7 / 9 / 13	170.4500	000.0	168.1000	T2 - 123.0	PEGLEG LOOKOUT
2	COMMAND	NIFC C10	BRANCH 1 / 5 / 7 / 9 / 13	170.4125	000.0	165.9625	T2 - 123.0	DYER MTN.
3	COMMAND	NIFC C31	BRANCH 1 / 5 / 7 / 9 / 13	173.0250	000.0	163.8250	T2 - 123.0	MT. LASSEN
4	COMMAND	NIFC C47	BRANCH 1 / 5 / 7 / 9 / 13	172.5500	000.0	165.3875	T2 - 123.0	COLBY MTN.
5	COMMAND	NIFC C56	BRANCH 1 / 5 / 7 / 9 / 13	172.3500	000.0	163.0375	T2 123.0	BALD MTN.
6	COMMAND	NIFC C57	BRANCH 1 / 5 / 7 / 9 / 13	173.7600	000.0	167.5500	T2 123.0	RED HILL
7	TACTICAL	CDF T28	A/B/C/E/F/G/I	151.1825	T16 192.8	151.1825	T16 192.8	
8	TACTICAL	CDF T29	DIV K / LASSEN IA	151.3475	T16 192.8	151.3475	T16 192.8	
9	TACTICAL	CDF T30	DIV L / CONT. GRP	151.3925	T16 192.8	151.3925	T16 192.8	
10	TACTICAL	CDF T31	DIV N / CHESTER	159.3825	T16 192.8	159.3825	T16 192.8	
11	TACTICAL	VTAC12	DIV P / BUTTE FSR	154.4525	T6 156.7	154.4525	T6 156.7	
12	TACTICAL	VTAC13	DIV J / O	158.7375	T6 156.7	158.7375	T6 156.7	
13	A/G CMD	A/G CMD	ALL DIVS	166.6000	000.0	166.6000	000.0	A/G COMMAND
14	A/G TACTICAL	CDF T18	ALL DIVS	159.3450	T16 192.8	159.3450	T16 192.8	A/G TACTICAL
15	MEDICAL	CALCORD	ALL DIVS	156.0750	T6 156.7	156.0750	T6 156.7	
16	AIRGUARD	AIRGUARD	ALL DIVS	168.6250	000.0	168.6250	T1 110.9	
17								
18								
19								
20	AIRGUARD	AIRGUARD	ALL DIVS	168.6250	N/A	168.6250	T1 110.9	
5. Special Instructions								
NIFC Frequencies will require the user to select Tone 2 in CALFIRE Statewide programmed radios. West Communications is located in Susanville. Radio Zone 51 / Group 15. DIXWA9								
6. Prepared by (Communications Unit Leader): Name: CORY COSTA			Signature: _____ Date/Time: 08/15/21 1930					
ICS 205 - CONTROLLED UNCLASSIFIED INFORMATION/BASIC								

ICS 205 - INCIDENT RADIO COMMUNICATIONS PLAN

CONTROLLED UNCLASSIFIED INFORMATION/BASIC

1. Incident Name: DIXIE WEST ZONE Page 2 of 2	2. Date/Time Prepared Date: 08/15/2021 Time: 1930	3. Operational Period: Date From: 08/16/21 Time From: 0700 Date To: 08/17/21 Time To: 0700
--	--	---

4. Communications		Name	Assigned To	Rx Freq	Rx Tone	Tx Freq	Tx Tone	Notes
1	COMMAND	NIFC C78	BRANCH 16	173.9375	000.0	163.6125	T2 - 123.0	ROOP
2	COMMAND	NIFC C89	BRANCH 16	173.7375	N/A	164.0125	T2 - 123.0	ANTELOPE LOOKOUT
3	COMMAND	NIFC C91	BRANCH 16	173.9750	N/A	165.4625	T2 - 123.0	SHAFFER MTN
4	COMMAND	NIFC C95	WESTWOOD	170.1750	N/A	165.5750	T2 - 123.0	WESTWOOD
5	TACTICAL	VFIRE 22	CLEAR BRANCH	154.2650N	T6 - 156.7	154.2650N	T6 - 156.7	147/MDW/DUFFY/WESTWOOD/ PENINSULA ***EAST ZONE 205
6	TACTICAL	VFIRE 23	WILDCAT / L. HVY EQ.	154.2850N	T6 - 156.7	154.2950N	T6 - 156.7	
7	TACTICAL	VFIRE 24	GRADE / STAGING	154.2725	T6 156.7	154.2725	T6 156.7	
8	TACTICAL	VFIRE 25	RIVER GRP	154.2875	T6 156.7	154.2875	T6 156.7	
9	TACTICAL	VFIRE 26	DIV T / CHRISTIE	154.3025	T6 156.7	154.3025	T6 156.7	
10	TACTICAL	NIFC T1	DIV R / GOLD	168.0500N	T2 - 123.0	168.0500N	T2 - 123.0	
11	TACTICAL	NIFC T2	DIV U / RICHMOND	168.2000N	T2 - 123.0	168.2000N	T2 - 123.0	
12	TACTICAL	NIFC T3	WINGFIELD	168.6000N	T2 - 123.0	168.6000N	T2 - 123.0	
13	A/G CMD	A/G CMD	ALL DIVS	166.6000	000.0	166.6000	000.0	A/G COMMAND
14	A/G TACTICAL	CDF T18	ALL DIVS	159.3450	T16 192.8	159.3450	T16 192.8	A/G TACTICAL
15	MEDICAL	CALCORD	ALL DIVS	156.0750	T6 156.7	156.0750	T6 156.7	
16	AIRGUARD	AIRGUARD	ALL DIVS	168.6250	000.0	168.6250	T1 110.9	
17								
18								
19								
20	AIRGUARD	AIRGUARD	ALL DIVS	168.6250	000.0	168.6250	T1 110.9	

5. Special Instructions
 NIFC Frequencies will require the user to select Tone 2 in CALFIRE Statewide programmed radios. West Communications is located in Susanville.

6. Prepared by (Communications Unit Leader): Name: CORY COSTA	Signature: _____ Date/Time: 08/15/21 1930
ICS 205 - CONTROLLED UNCLASSIFIED INFORMATION/BASIC	

INCIDENT RADIO COMMUNICATIONS PLAN (ICS 205)

1. Incident Name:
DIXIE EAST ZONE

2. Date/Time Prepared:
Date: 08/15/21
Time: 1833 Hrs.

3. Operational Period: DAY/NIGHT
Date From: 08/16/21
Time From: 0700

Date To: 08/17/21
Time To: 0700

4. Basic Radio Channel Uses: CONTROLLED UNCLASSIFIED INFORMATION/BASIC

Zone Grp.	Ch #	Function	Channel Name/Trunked Radio System Talkgroup	Assignment	RX Freq	RX Tone	TX Freq	TX Tone	Mode (A, D, or M)	Remarks
	1	COMMAND	NIFC C68	ALL BRANCHES CLEAR BRANCH	172.0875	T3 131.8	162.3625	T3 131.8	A	THOMPSON PK. All repeaters linked back to ICP
	2	COMMAND	NIFC C8	ALL BRANCHES	169.5375	T3 131.8	164.7125	T3 131.8	A	SPANISH PEAK all repeaters linked back to ICP
	3	COMMAND	NIFC C3	ALL BRANCHES	170.4250	T3 131.8	168.0750	T3 131.8	A	CLAREMONT all repeaters linked back to ICP
	4	COMMAND	NIFC C46	ALL BRANCHES CLEAR BRANCH	171.0875	T3 131.8	164.6000	T3 131.8	A	DYER all repeaters linked back to ICP
	5	COMMAND	NIFC C12	ALL BRANCHES CLEAR BRANCH	173.0375	T3 131.8	167.3250	T3 131.8	A	KETTLE ROCK all repeaters linked back to ICP
	6	COMMAND	NIFC C30	ALL BRANCHES CLEAR BRANCH	171.1125	T3 131.8	162.1875	T3 131.8	A	ROOP MT all repeaters linked back to ICP
	7	TACTICAL	VFIRE 22	DIV QQ, MEADOW GRP, 147 GRP	154.2850	T6 156.7	154.2650	T6 156.7	A	Peninsula, Duffy, Westwood Group
	8	TACTICAL	VFIRE 23	DIV NN, COYOTE, WILDCAT GRP	154.2950	T6 156.7	154.2950	T6 156.7	A	
	9	TACTICAL	NIFC T5	Antelope/Lamesville Contingency Group EVANS GRP	166.7250	T3 131.8	166.7250	T3 131.8	A	
	10	TACTICAL	NIFC T6	DIV PP, DIV RRWWXX,	166.7750	T3 131.8	166.7750	T3 131.8	A	
	11	TACTICAL	NIFC T7	HUNT GRP	168.2500	T3 131.8	168.2500	T3 131.8	A	NIGHT HUNT GRP
	12	TACTICAL	NIFC T89	DYER GRP	165.3625	T3 131.8	165.3625	T3 131.8	A	NIGHT DYER GRP
	13	AVG CMD	AG CMD E	ALL DIVISIONS	168.3375	000.0	168.3375	000.0	A	
	14	AVG TAC	AG TACE	ALL DIVISIONS	169.1000	000.0	169.1000	000.0	A	
	15	MEDICAL	CALCORD	ALL DIVISIONS	156.0750	T6 156.7	156.0750	T6 156.7	A	
	16	EMERGENCY	GUARD	ALL DIVISIONS	168.6250	T1 110.9	168.6250	T1 110.9	A	
	17	BLANK								
	18	BLANK								
	19	BLANK								
	20	EMERGENCY	GUARD	ALL DIVS	168.6250	000.0	168.6250	T1 110.9	A	

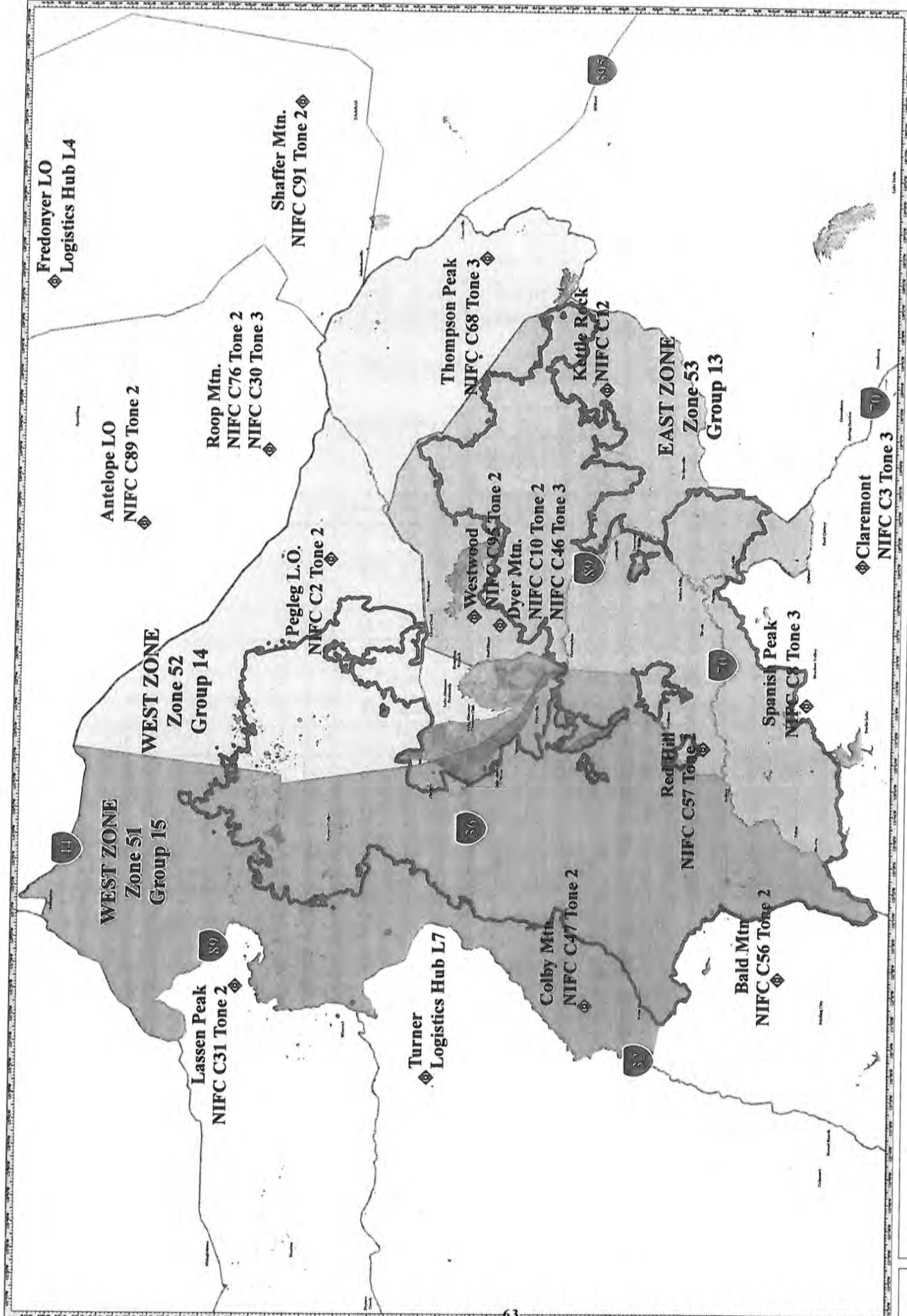
5. Special Instructions: All recourses working the DIXIE EAST Zone all MI, and Supply orders go through DIXIE EAST Communication.

6. Prepared by: Name: Team 4 COML, Tim Maguire, Sal Bonilla Jr. 208-850-2701 Signature:

East Comm Unit 480-640-0402

LAST CLONE: B11 CONTROLLED UNCLASSIFIED INFORMATION/BASIC

ICS 205



Dixie Incident
Radio Zones
August 16, 2021



**RADIO ZONES
DIXIE INCIDENT**
CA-BTU-009205
August 16, 2021



Dixie Incident
CA-BTU-009205
Radio Zones
August 16, 2021

1. Incident Name: DIXIE WEST ZONE		2. Operational Period: Date From: 08/16/21 Date To: 08/17/21 Time From: 0700 Time To: 0700	
3. Basic Local Communications Information:			
Incident Assigned Position	Name	Contact Number	
SAFETY OFFICER	DAVID SARGENTI	(831) 596-4724	
PLANS SECTION CHIEF	BUDDY BLOXHAM	(831) 236-5659	
SUPPLY UNIT LEADER	CHRIS BONNER	(530) 859-3187	
INFORMATION OFFICER	DAN OLSON	(951) 575-5262	
INFORMATION LINE MEDIA		(530) 588-0845	
AIR OPS BRANCH DIRECTOR	MATT STANFORD	(951) 545-8205	
FINANCE SECTION CHIEF	PATRICK AQUADA	(909) 531-2733	
TIME UNIT		(925) 532- 5494	
COMP CLAIMS		(925) 532- 5468	
COST SHARE TEAM		(925) 532- 5438	
LOGISTICS SECTION CHIEF	MILFORD FERGUSON	(951) 746-4832	
ORDERING	JENNA PECKHAM	(916) 216-0184	
MOTELS	APRIL BROWN	(916) 809-1136	
GROUND SUPPORT LEADER (DAY)	ANDY WHITLOCK	(707) 391-6711	
GROUND SUPPORT (NIGHTS)	MECHANIC	(925) 532-5501	
HIRED EQUIPMENT	MIKE FONSEN	(707) 972-1875	
MEDICAL UNIT LEADER	KEVIN FORTNEY	(951) 264-9340	
COMMUNICATIONS	WEST COMMUNICATIONS	(916) 800-0214	
SUSANVILLE STAGING	HERNAN RODRIGUEZ	(530) 966-5147	
4. Prepared by: Name: <u>KYLE JOHNSON</u> Position/Title: <u>COML IMT #3</u> Signature: 			
ICS 205A		Date/Time: <u>08/15/21 19:00</u>	

COMMUNICATIONS LIST (ICS 205A)



MEDICAL PLAN

1. INCIDENT NAME
**Dixie
CA-BTU-009205**

2. DATE PREPARED
08/15/21

3. TIME PREPARED
1700

4. OPERATIONAL PERIOD
**0700-0700
08/16/21-08/17/21**

5. INCIDENT MEDICAL AID STATIONS

MEDICAL AID STATIONS	LOCATION	PARAMEDICS	
		YES	NO
CAL-MAT	ICP	DR & RN	

6. TRANSPORTATION

A. Air Ambulances

NAME	ADDRESS	PHONE	PARAMEDICS	
			YES	NO
Guard 840 (Day Hoist)	Battle Creek Helibase	CMD Channel	XX	
Guard 820 (Night Hoist)	Redding Helibase	CMD Channel	XX	
SEMSA 1	Susanville	Susanville ECC	XX	

B. Ground Ambulances

Manteca District Ambulance	Medic 6	Susanville ICP	CMD Channel	XX
Manteca District Ambulance	Medic 4	Westwood Camp (Branch 16)	CMD Channel	XX
Solano Ambulance	Medic 1	Clear Branch	CMD Channel	XX

7. HOSPITALS

NAME	ADDRESS	TRAVEL TIME		PHONE	HELIPAD		BURN CENTER	
		AIR	GRND		YES	NO	YES	NO
Banner Lassen Medical Ctr.	1800 Spring Ridge Dr. Susanville 40 28.27 N 120 37.67 W	5 min	10 min	(530) 257-0911	XX			XX
Enloe Hospital Level 2 Trauma	1530 Esplanade, Chico 39 44.56 N 121 51.10 W	15 min	1.5 hrs	(530) 332-7740	XX			XX
UC Davis Medical Center Level 1 Trauma	2315 Stockton Blvd, Sacramento 38 33.33 N 121 27.32 W	45 min	3 hrs	(916) 734-2011	XX		XX	
Renown Regional Medical Level 2 Trauma	1115 Mill Street Reno, NV 39 31.32 N 119 47.44 W	35 min	1.5 hrs	(775) 982-2005 Charge RN Line	X 2			XX
Mercy Hospital Level 2 Trauma	2175 Rosaline Ave, Redding, CA 40 34.33 N 122 23.80 W	20 min	2.5 hrs	(530) 225-7201 Nurse Line	XX			XX

8. MEDICAL EMERGENCY PROCEDURES

LINE EMERGENCY: Crew Supervisor to contact Division Supervisor with patient complaint/condition and location.

- Division Supervisor contacts:
 - FEMT / FEMP
 - Communications Unit
 - Div is the IC for the Incident
- Communication Unit will clear command channel for emergency traffic; as needed for Minor/Major Emergency
- Communications will switch all emergency traffic to CALCORD as needed or requested.
- Communications Unit contacts:
 - Medical Unit
 - Safety
 - Operations
- Division Supervisor will run medical emergency on CALCORD.
- Medical Unit will:
 1. Dispatch air/ground ambulance to as appropriate.
 2. If necessary, after patient pickup, dispatch ambulance to helibase for transportation.
 3. Notify receiving hospital of injury status.

CAMP EMERGENCY: Contact Medical Unit with patient complaint/condition and location. Medical Staff will respond to stabilize incident.

INJURY REPORTING PROCEDURES

NATURE OF INJURY _____

LOCATION OF PATIENT _____

TRANSPORTATION REQUESTED BY: AIR ___ GROUND ___

POINT OF PICKUP _____

LAT _____ LONG _____

PATIENT UNIT ID _____

REMINDER: DO NOT GIVE PT NAME OVER RADIO

IS AN EMT WITH PATIENT: YES ___ NO ___

AGE _____

SEX: MALE ___ FEMALE ___

ALL EMERGENCIES---Secure the area and identify witnesses for later investigation. Keep an accurate log of events.

Medical Unit (951) 264-9340

ICS 206 8-78

9. PREPARED BY (MEDICAL UNIT LEADER)
Kevin Fortney MEDL

10. REVIEWED BY (SAFETY OFFICER)
Damon Godden SOF1



TRAINING SPECIALIST MESSAGE

TRAINEES:

In order to receive documented credit for your training assignment, you must register with the TNSP prior to starting the demob process.

TRAINERS/EVALUATORS:

If as much work as possible has been completed in the position task book, you are strongly encouraged to take advantage of your time in camp and conduct the training close-out with the TNSP. It is not necessary to wait until you demob.

Bring the following with you to the "exit interview"

- Your properly initiated Position Task Book
- Completed and signed ICS 225 Performance Evaluation
- Completed and signed Evaluation Record

REMOTE CHECK-IN



Justin Voyson TNSP
Justin.voyson@lacity.org
661-547-8629

A handwritten signature in black ink, appearing to read "Justin Voyson".

In readiness is all



INCIDENT MANAGEMENT TEAM 3



DEMOBILIZATION MESSAGE **Dixie Incident** **CA-BTU-009205**

We appreciate your efforts during this incident and want to make sure that we get you to your next destination safely and efficiently. When we begin demobilization, a Tentative Demobilization List will be posted in several places around base camp, including the briefing area and the eating area. If you are on this list, please adhere to the following:

SHOW UP AT THE DESIGNATED TIME

- Show up at the designated time.
- Do not show up early.
- Do not show up late.

A demobilization schedule has been prepared in careful coordination with all essential demobilization functions. Not following the demobilization schedule can have significant negative impacts on the Demobilization Unit staff and all other resources scheduled for demobilization. We do not want you or any other resources to have unnecessary delays. Please adhere to your scheduled demobilization time.

BE PREPARED FOR A RE-ASSIGNMENT

There may be other incidents in the state that are in need of resources. There is a possibility that some of the resources released from this incident will be immediately assigned to another one. Please make sure you are properly supplied, rested, and nourished while waiting for your designated demobilization time.

BE THOROUGH AND EFFICIENT

Demobilization begins and ends at the Demobilization Unit. Please follow the instructions given to you when starting the demobilization process. Returning to the Demobilization Unit with a complete and accurate Demobilization Check-Out (ICS-221) form will help prevent any unnecessary delays and ensure you are shown as available for future assignments. Unforeseen delays can occur during the demobilization process, such as mechanical issues discovered while at Ground Support. Plan to visit the Time Unit towards the end of the demobilization process in order to provide an accurate accounting of your time.

In readiness is all



DIXIE INCIDENT WEST ZONE CAL FIRE IMT 3 PUBLIC INFORMATION



Incident Information Line: (530) 255-4023
Incident Media Line: (530) 588-0845

CURRENT INCIDENT STATUS	
Incident Start Date: 7/13/21	Incident Start Time: 5:15 p.m.
Cause: Under Investigation	Acres:
Containment:	Total Personnel:

MEDIA

The California State Penal Code Section 409.5(d) allows the news media to enter scenes of disaster, riot, or civil disturbance. Properly identified members of the news media should not be restricted from entering locations specified within the code. However, this does not include crime scenes, private property and does not imply that the news media may interfere with incident operations while they are in the areas of concern. More information can be found [here](#).



CAL FIRE SOCIAL MEDIA POLICY

When assigned to a CAL FIRE incident, you will adhere to the CAL FIRE Social Media Policy, Section 0691. You can find further information about the CAL FIRE Social Media Policy [here](#).



FEDERAL FIRE SOCIAL MEDIA POLICY

Social media posts can reflect on the professionalism of your crew, your agency, and Wildland Firefighting Community. The U.S. Forest Service has enjoyed a reputation as the world leader in wildland firefighting for over 100 years. Protect our legacy with good conduct on the fireline and online. When assigned to a federal fire you are considered a federal employee under the delegation of authority. Even if you are a contractor, AD or from a partner agency we recommend you follow these ethics guidelines which apply to federal employees all the time.

PHOTOGRAPHS AND VIDEOS OF INCIDENT

The Public Information Office would like copies of the video and pictures that you safely took while not in an emergency, fire suppression activity or in an overhead assignment. Bring your video and pictures to the Public Information trailer; they will be reviewed and possibly uploaded to our many CAL FIRE social media sites. Remember, we don't want photographs or videos that depict unsafe, unprofessional, or embarrassing circumstances, which are a serious breach of ethics. The Public Information Office is looking for photos and videos from the Dixie Fire, email to: calfireimt3pio@gmail.com

LOST AND FOUND

The Information Section will manage lost and found items for the incident, located at the PIO Trailer.

<p>Incident Base Camp Mailing Address</p> <p>c/o Public Information Office/Trailer ATTN: Recipients Name and O-number Lassen County Firegrounds 195 Russell Ave Susanville, CA 96130</p>
--

Peer Support Team Message:

INCIDENT PEER SUPPORT:

We have one or two peers on the incident for any peer support related needs for the duration of the incident. The best way to get a hold of them is to call the ESS Helpline number below. They will get you in contact with the peers on the incident.

**CAL FIRE Peer Support/Helpline
916-445-4337**

Below is a list with all the ESS Team Members:

**Tony Howard 916-224-1543
Mike Aiello 916-584-0548
Jeremy Sanders 916-281-6472
Sam Lazarich - 530 796-1025
Shawna Powell - 530 717-0667
Amy Head 916 956-3277
Warren Parrish 916-823-6641
Amber Henderson 805-794-1690
Chris Lomanto 916-247-6974
Krissy Schaefer 619 592-6337
Mike Deleo 916 661-0724**

**For any Federal employees needing peer support contact the number below, Melanie is the lead peer at the Quincy ICP
Melanie Hornsby 775 350-0331**

In addition to peer support, if there is a need, we can have a culturally competent Clinician available on the incident that could meet with you on an individual and/or group basis. Please contact the Helpline to get in contact with the peer that's at the incident to make the request.



DIXIE INCIDENT FINANCE MESSAGE PAGE 1



FINANCE SECTION

Located at the end of "trailer row" near the briefing area. The Time Unit is in the large trailer next to the briefing area.

COST SHARE REPORTING

PHONE: 925-532-5438

THIS IS A COST SHARE FIRE. All line supervisors (DIVS, OPBD, STAM, etc.) need to check in with the Cost Share Team each day at the end of your shift. The Cost Share Team is located at Lassen County Fair Grounds in Susanville.

- ❖ *Please report IN PERSON to the Cost Share Team at the end of your shift.*
- ❖ **EAST ZONE COST SHARE REPORTING: 925-532-5610**

TIME UNIT

PHONE: 925-532-5494

- **CAL FIRE PERSONNEL** – make sure you have started your eFC-33's and update after each shift. Please make sure E-Pay schedules are up to date. An EPAY Café is set up outside the Time Trailer.
- **HIRED EQUIPMENT SUPPLIERS** – Check in with the Time Unit and drop off your agreements.
- **SHIFT TICKET BOOKS** - for line supervisors are available in the Time Unit (agency personnel only).
- **DIVISION GROUP SUPERVISORS / LINE SUPERVISORS** - Please make sure to turn in hired equipment shift tickets at the end of each shift.
- **FEDERAL TIME:** We have set up a collection system for federal agency personnel, equipment, and contractors. Please drop off your signed documents in the Time trailer.
- **OES / LOCAL GOVERNMENT / EMAC RESOURCES:** Please see the OES representatives in the OES Comm Unit to track time.

HIRED EQUIPMENT DEMOB

If you are a hired equipment vendor and are in the demob process, please use this QR code to start a "virtual" check out process with the Time Unit. You can do this during your demob process prior to reporting to the Time Unit. They will use the information to start your documents. You will still need to come to the Time Unit to get your last shift ticket.

HIRED EQUIPMENT DEMOB QR





DIXIE INCIDENT FINANCE MESSAGE PAGE 2



COMP / CLAIMS
PHONE: 925-532-5468

Please report all injuries and suppression damage to the Comp / Claims, no matter how minor.

DAMAGE CLAIMS (suppression, property, vehicle)
2 ways to report:

- QR code at the right
- ICS-213. We will need location, description of damages, and your contact information.

DAMAGE CLAIM REPORT QR



WATER SOURCE WORKSHEET
Please use the QR code at the right to report any water use for suppression or support.
You can also use the form on the next page. Please turn in to Comp Claims.

WATER SOURCE REPORT QR



******CITY OF SUSANVILLE WATER SOURCES******

**ONLY USE PRE-IDENTIFIED FIRE HYDRANTS MARKED FOR THE DIXIE FIRE.
DO NOT USE ANY OTHER FIRE HYDRANTS IN THE CITY OF SUSANVILLE!**

Pat Aguada, FSC1
Krissy Schaefer, FSC1-T



INCIDENT MANAGEMENT TEAM 3

Finance Section



Shift Ticket Examples

24hr Line Resource

EMERGENCY SHIFT TICKET and EVALUATION FORM The responsible Government Officer will complete this form each shift.						Contractor Name THE BEST DOZERS LLC											
Incident or Project Name DIXIE		Incident Number CABTU-009205		Request Number E-222		Operator #1 FIRST & LAST	Operator #2 FIRST & LAST										
Agreement Number MMU 0000023432						Operator Furnished By: <input checked="" type="checkbox"/> Contractor <input type="checkbox"/> Government											
Equipment Make 1999 PETERBILT			Equipment Model / Type 379 /TRANSPORT 18 WHEEL			Operating Supplies Furnished By: <input checked="" type="checkbox"/> Contractor <input type="checkbox"/> Government											
Serial Number FULL VIN #			License Number 12345A1			Equipment Status <input type="checkbox"/> Inspected <input checked="" type="checkbox"/> Under Agreement											
Equipment Use (Circle) <input checked="" type="radio"/> Hours <input type="radio"/> Days / Miles						Released by Government <input type="checkbox"/> Withdrawn by Contractor <input type="checkbox"/>											
Date Mo / Day	Start	Stop	Work	Assignment		Remarks/Comments**											
6/26	0701	2400	17	DIV X													
6/27	0001	0700	7	DIV X													
Vendor Rating						Govt. Rep. Name and Position – PRINT											
<table border="1" style="width: 100%; border-collapse: collapse;"> <tr> <td>Poor*</td> <td>Avg.</td> <td>Good</td> <td>Exc.</td> <td>N/A</td> </tr> <tr> <td style="text-align: center;">VENDOR RATING MUST BE DONE</td> <td></td> <td></td> <td></td> <td></td> </tr> </table>						Poor*	Avg.	Good	Exc.	N/A	VENDOR RATING MUST BE DONE					Print Your Name	
Poor*	Avg.	Good	Exc.	N/A													
VENDOR RATING MUST BE DONE																	
Met Performance Expectations						Govt. Rep. Signature											
Equipment in Safe Working Condition						Your Signature											
Operator Skill Level						Contractor Signature											
Operates Safely						John Smith											
Operator's Cooperation Level						Date	Time										
Overall Performance						6/27/18	0700										
* NOTE: any rating of POOR requires an explanation in Comment Section. ** Final evaluation or for more documentation, use a CALFIRE Form 230 or equivalent.						CAL FIRE 297 (Rev 3-2011)											

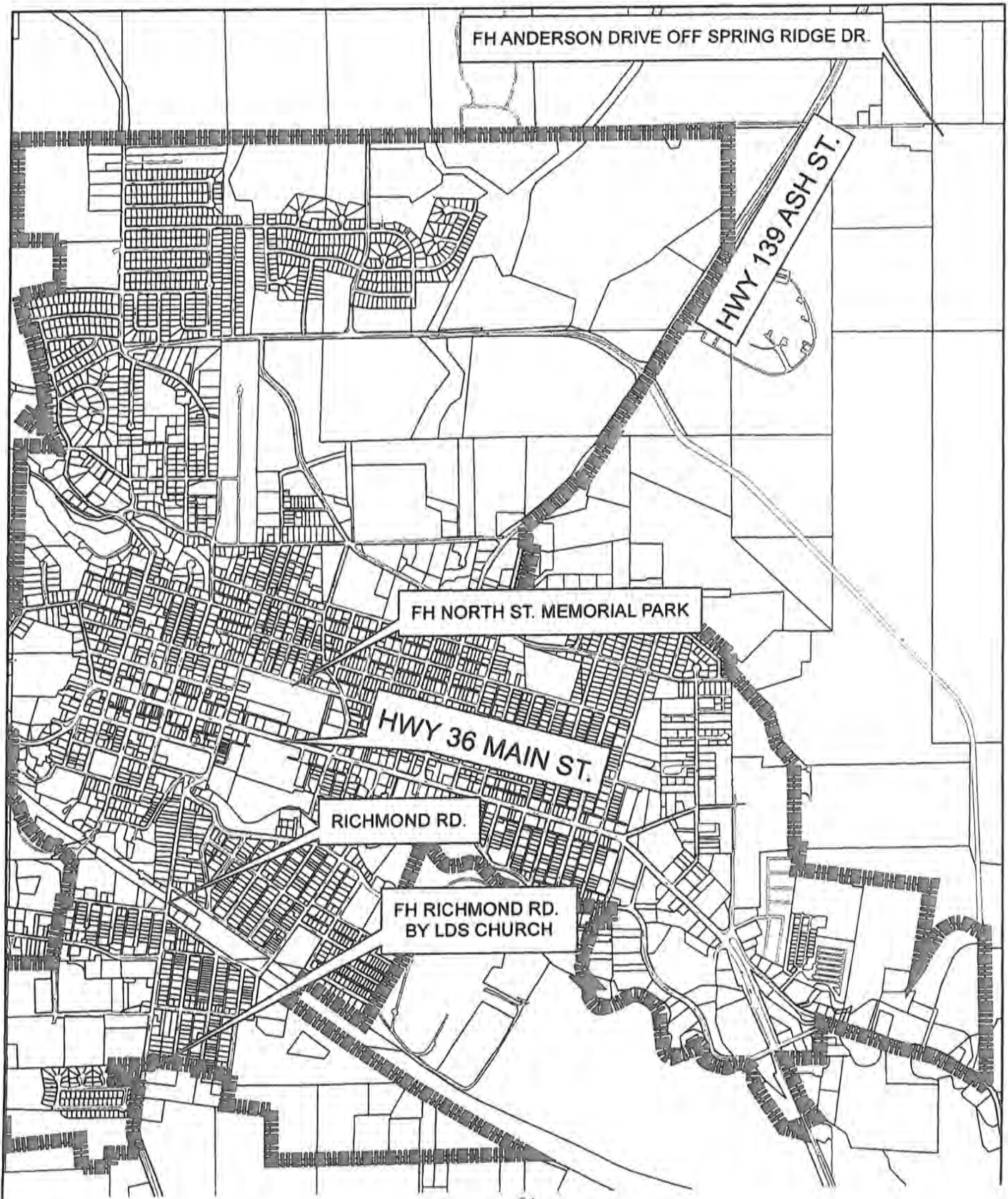
12hr Line Resource

EMERGENCY SHIFT TICKET and EVALUATION FORM The responsible Government Officer will complete this form each shift.						Contractor Name THE BEST DOZERS LLC											
Incident or Project Name DIXIE		Incident Number CABTU-009205		Request Number E-555		Operator #1 FIRST & LAST	Operator #2 -										
Agreement Number MMU 0000023432						Operator Furnished By: <input checked="" type="checkbox"/> Contractor <input type="checkbox"/> Government											
Equipment Make 2004 CAT			Equipment Model / Type D6N / TYPE II D			Operating Supplies Furnished By: <input checked="" type="checkbox"/> Contractor <input type="checkbox"/> Government											
Serial Number FULL SERIAL #			License Number -			Equipment Status <input type="checkbox"/> Inspected <input checked="" type="checkbox"/> Under Agreement											
Equipment Use (Circle) <input checked="" type="radio"/> Hours <input type="radio"/> Days / Miles						Released by Government <input type="checkbox"/> Withdrawn by Contractor <input type="checkbox"/>											
Date Mo / Day	Start	Stop	Work	Assignment		Remarks/Comments**											
6/26	0001	0700	7	OFF SHIFT													
6/26	0701	1900	12	DIV X													
6/26	1901	2400	5	OFF SHIFT													
Vendor Rating						Govt. Rep. Name and Position – PRINT											
<table border="1" style="width: 100%; border-collapse: collapse;"> <tr> <td>Poor*</td> <td>Avg.</td> <td>Good</td> <td>Exc.</td> <td>N/A</td> </tr> <tr> <td style="text-align: center;">VENDOR RATING MUST BE DONE</td> <td></td> <td></td> <td></td> <td></td> </tr> </table>						Poor*	Avg.	Good	Exc.	N/A	VENDOR RATING MUST BE DONE					Print Your Name	
Poor*	Avg.	Good	Exc.	N/A													
VENDOR RATING MUST BE DONE																	
Met Performance Expectations						Govt. Rep. Signature											
Equipment in Safe Working Condition						Your Signature											
Operator Skill Level						Contractor Signature											
Operates Safely						John Smith											
Operator's Cooperation Level						Date	Time										
Overall Performance						6/26/18	1900										
* NOTE: any rating of POOR requires an explanation in Comment Section. ** Final evaluation or for more documentation, use a CALFIRE Form 230 or equivalent.						CAL FIRE 297 (Rev 3-2011)											

In readiness is all



DESIGNATED FIRE HYDRANTS FOR FIRE FIGHTERS



DAILY READ MESSAGE

Remember: red/black striped flagging = AVOIDANCE
(no hand or machine work)

Today's Feature: Historic Lassen Emigrant Trail

- This emigrant trail experienced the most use from 1848-1851 by settlers seeking a new life and many intended to strike riches in the California mining operations.
- Peter Lassen established this route breaking off from the Applegate Trail in order to lead settlers to his rancho (Benton City) near Vina CA to increase property values.
- The Lassen Trail quickly proved to be extremely difficult to navigate. It was known as the "Death Route." The Nobles Emigrant Trail established in 1852 quickly became the preferred route.



The trail heading south to Marker L-30.

Photo by Alison Portale

- Marker L-30, Near Bogard
(Westwood Sector: Div-R)
- From a journal entry, Oct. 1849:

LASSEN TRAIL - CHICKEN VENTURE
"(HERE) WAS AN OX-WAGON TO WHICH WAS ATTACHED A LARGE HEN
COOP FULL OF CHICKENS AND ROOSTERS. (THE OWNER) INTENDING A
GRAND SPECULATION IN CALIFORNIA" —J.G. BRUFF, OCT 13, 1849

(ie, this individual travelled to CA to make their
chicken fortune!)

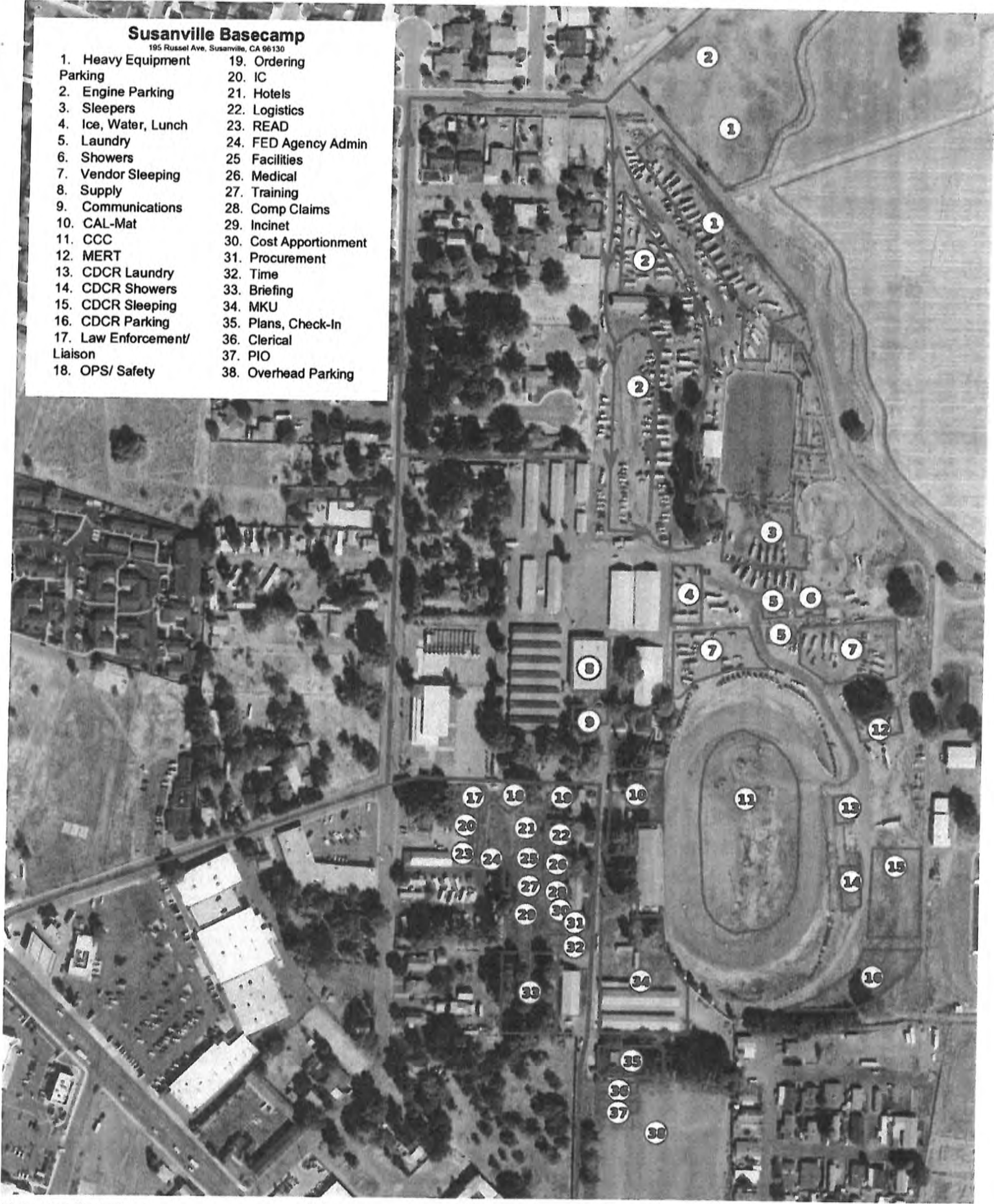
**** If you think you have identified a natural or cultural resource concern, check in with the REAF in your Division or contact Lead READ Jake Martin at 530-260-6288 – jacob.martin1@usda.gov. Remember artifact collecting is illegal.**

Thank you !

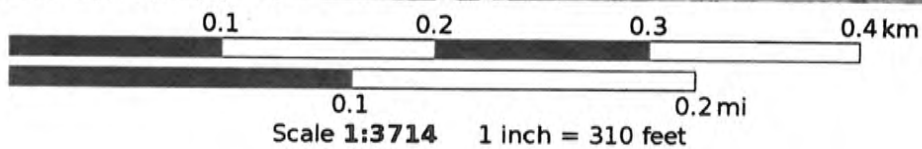
Susanville Basecamp

195 Russel Ave, Susanville, CA 96130

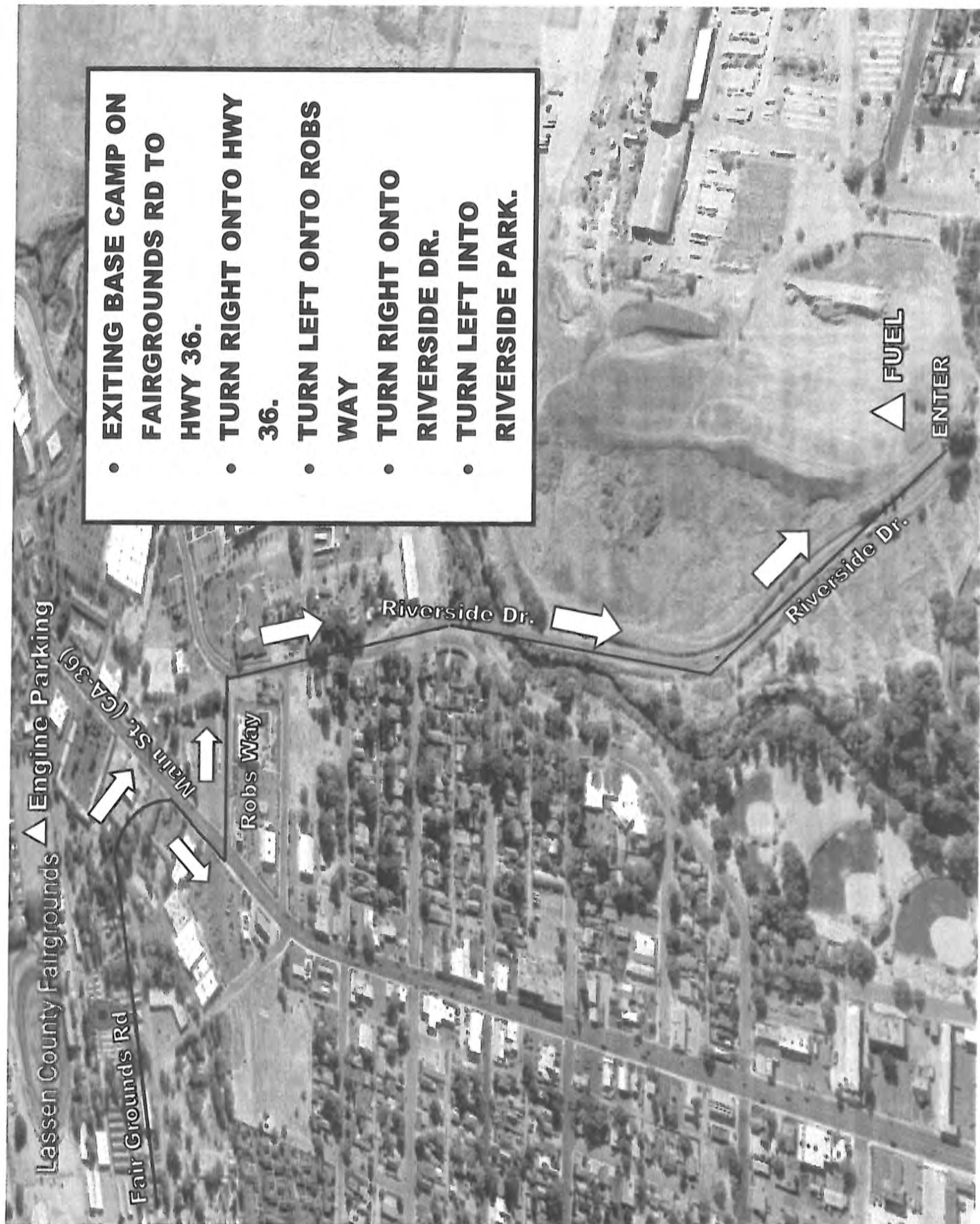
- | | |
|------------------------------|------------------------|
| 1. Heavy Equipment Parking | 19. Ordering |
| 2. Engine Parking | 20. IC |
| 3. Sleepers | 21. Hotels |
| 4. Ice, Water, Lunch | 22. Logistics |
| 5. Laundry | 23. READ |
| 6. Showers | 24. FED Agency Admin |
| 7. Vendor Sleeping | 25. Facilities |
| 8. Supply | 26. Medical |
| 9. Communications | 27. Training |
| 10. CAL-Mat | 28. Comp Claims |
| 11. CCC | 29. Incinet |
| 12. MERT | 30. Cost Apportionment |
| 13. CDCR Laundry | 31. Procurement |
| 14. CDCR Showers | 32. Time |
| 15. CDCR Sleeping | 33. Briefing |
| 16. CDCR Parking | 34. MKU |
| 17. Law Enforcement/ Liaison | 35. Plans, Check-In |
| 18. OPS/ Safety | 36. Clerical |
| | 37. PIO |
| | 38. Overhead Parking |



Mercator Projection
WGS84
USNG Zone 10TKK
SARTOPO

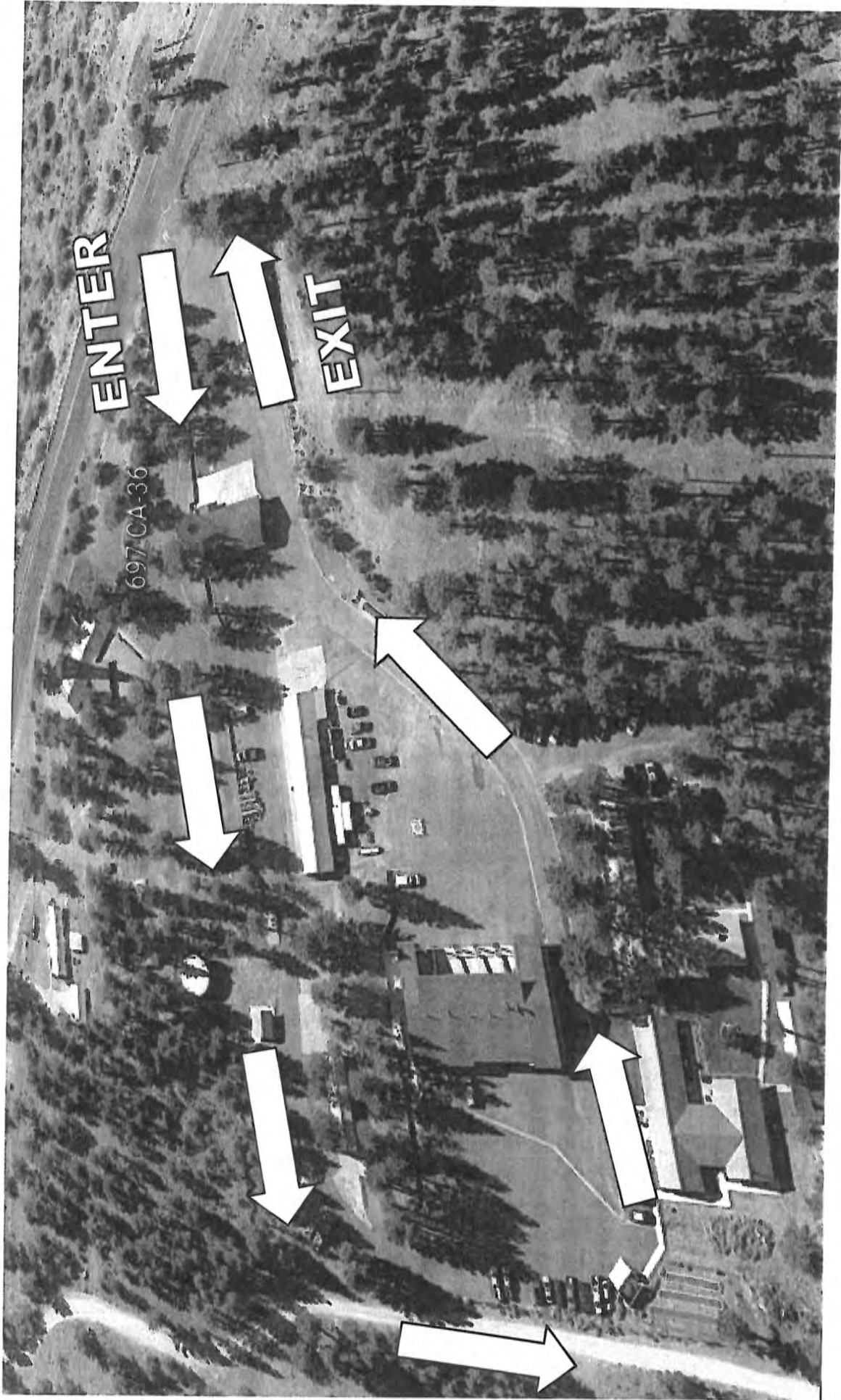


FUEL ROUTE FROM BASE CAMP



- EXITING BASE CAMP ON FAIRGROUNDS RD TO HWY 36.
- TURN RIGHT ONTO HWY 36.
- TURN LEFT ONTO ROBBS WAY
- TURN RIGHT ONTO RIVERSIDE DR.
- TURN LEFT INTO RIVERSIDE PARK.

GROUND SUPPORT DEMOB TRAFFIC PLAN



- EXITING BASE CAMP ON RUSSELL AVE. TO HWY 36
- TURN RIGHT ONTO HWY 36 (2.5 MILES)
- TURN RIGHT AT 697 CA-36 (LASSEN MODOC HEADQUARTERS)



VEHICLE REPAIR REQUEST CHECKLIST



To expedite repairs on disabled equipment on the fireline we request the following information

Resource Order # (O, E, C)					
Contact Name					
Contact Phone Number					
Branch		Division			
Command		Tone		TAC	
Vehicle ID (IE: Engine #, Dozer #, Utility #) & (CAL FIRE Equipment X Number)					
Year, Make, Model					
Exact Location of Vehicle					
Description of Problem					

INCIDENT ACTION PLAN

DIXIE FIRE EAST ZONE

CA-BTU-009205
PNN5ZB21 (1522)



OPERATIONAL PERIOD
MONDAY/TUESDAY
8/16/2021 - 8/17/2021
0700 – 0700

Fire Information:
2021.dixie.ca@firenet.gov
530-538-7826



IAP / MAPS

FIRING OPERATION CHECKLIST

Location: _____

Date: _____ Time: _____

Firing Supervisor _____

1. Personnel Briefing

- Objectives
- Conditions (fire environment)
- Resource assignments identified
 - Firing personnel
 - Holding forces
 - Lookouts
- Ignition plan/sequence
- Communication Plan
- Contingency Plan
- Safety issues

2. Go / No-Go

- All personnel briefed
- Weather forecast reviewed
- Resources in place
- Lookouts posted as needed
- Anchor and termination firing points identified
- Communications systems in place
- Fire behavior forecast reviewed
- Escape routes and safety zones established and made known
- Adjoining forces/Air Attack notified

3. Approval Prior To Firing

- Division Supervisor
- Branch Director
- Operations

4. Other Notifications

- Other: _____
- Other: _____

Attach Firing Operations Checklist to ICS-214

Rev: Ops Group February 8, 2011

