

** CORRECTED **

INCIDENT ACTION PLAN DIXIE WEST ZONE INCIDENT

CA-BTU-009205



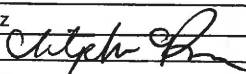
Saturday

OPERATIONAL PERIOD

9/4/2021 0700
to
9/5/2021 0700



ORGANIZATION ASSIGNMENT LIST (ICS 203)

1. Incident Name: DIXIE WEST ZONE		2. Operational Period: Date From: 9/4/2021		Date To: 9/5/2021	
		Time From: 0700		Time To: 0700	
3. Incident Commander(s) and Command Staff:			7. Operation Section:		
IC/UC's	N. Truax, M. Minton		Operations	M. Wink	
Deputy	G. Huang, L. Kendall (T), B. Gunn (T)		Deputy Operations	T. Brownell	
Safety Officer	B. Niven, C. Hamilton (T)		Night Ops	M. Jonsson	
Information Officer	E. Smith, C. Bruno (T), A. Vansciver (T)		Staging	Susanville	
Liaison Officer	D. Schloss, N. Armstrong (T)		Sector	Butte	
Law Liaison	J. Powell, S. Black		Branch	1 / 5 / 7	
			Division/Group	A/B/C/D/E/F/G/I	
4. Agency/Organization Representatives:			Division/Group	Butte FSR	D. Derby (Day)
Agency/Organization	Name		Sector	Shasta	M. Fields (Day)
Lassen National Forest	D. Bumpus		Branch	9	E. Smith (Day)
Plumas National Forest	C. Carlton		Division/Group	J/K	L. Rambo (STG TGU 9253G)
Lassen National Park	J. Richardson		Division/Group	L	J. Ortegal (STC MEU 9111C)
USFS Tribal Liaison	D. Charley				
Lassen County S.O.	M. Carney		Branch	13	M. Klimek (Day) P. English (Day)(T) N. Bunch (Night) Demob
Plumas County S.O.	C. Wingfield		Division/Group	N/O	R. Mitchell (Day), J. Strait (Day)(T), T. Edwards (Day) (T), J. Martinez (Night), B. Wheeler (Night)(T)
Shasta County S.O.	C. MacGregor		Division/Group	P	Z. Palmer (Day), B. Hilderbrand (Day)(T) O. Genao (Night)
CAL OES	S. Sjtovedt		Branch	Shasta Contingency	A. Stornetta (Day)
CDCR	S. Harkness		Division/Group		
CCC	C. Harris, A. Loayza		Sector	Lassen	S. Prather (Day)
CHP	E. Egide		Branch	16	M. Petro
CAL TRANS	M. Webb, R. Kuykendall		Division/Group	Q	M. Medeiros (T)
CAL EMSA	B. Gates		Division/Group	R	M. Milojevich, T. Carey (T)
Air National Guard	C. Henson		Division/Group	S/T/U	C. Costa
PG&E	J. Lee, F. Berbina		Division/Group	Lassen Cont.	J. Pangburn
CAL FIRE BTU	Butte Duty Chief		Division/Group		
CAL FIRE LMU	L. Caldwell		Sector	Westwood	S. Raley (Day)
CAL FIRE TGU	B. Lopez		Division/Group	Westwood	H. Lawler (T/F XSD 6442)
			Branch	Janesville	P. Beninhoven
5. Planning Section:			Division/Group	Milford	W. Darnall (STC LMU 9222C)
Chief	C. Carrera, P. Carlos (T)		Division/Group	Antelope	S. Sanchez (STC SBC 9322C) Himmerich
Deputy	C. Reneau		Division/Group	Junction	H. Niederberger, R. Rushing (T)
Resource Unit	J. Weber, R. Villarino (T)		Division/Group		
Situation Unit	M. Thau, R. Broomfield, J. Gaddie (T)		Branch	FSR	
Documentation Unit	R. Frymire		Division/Group	Lassen FSR	I. Houser (Day)
Demobilization Unit	S. Sharp		Air Operations Branch		Director: M. Hill
GISS	N. Meyer		Deputy Air Operations Branch		
FBAN	D. Watt		Air Support Group Supervisor		
IMET	D. Williams		Battle Helibase Manager		
Training Tech Spec	S. Galvez		Eagle Helibase Manager		
6. Logistics Section			8. Finance/Administration Section:		
Chief	J. Morris, J. Guerra (T)		Chief	J. Franklin, S. Cain, S. Thompson (T)	
Supply Unit	L. Story, N. Hoehn (T)		Time Unit	A. DaSilva	
Facilities Unit	N. Poe, K. Pope (T)		Procurement Unit	T. Meyer	
Ground Support Unit	P. Mock		Comp/Claims Unit	A. Haggerman	
Communications Unit	J. Aguilera		Cost Unit	A. Vasquez	
Medical Unit	R. Wicklas		Purchasing Unit	I. Rodriguez	
Prepared By: Name:	C. Reneau	Position/Title:	DPSC	Signature:	
ICS 203		Date/Time:	9/3/2021 2300 hours		

FIRE BEHAVIOR FORECAST

FORECAST NUMBER: 41

TYPE OF FIRE: Wildfire

FIRE NAME: Dixie – West Zone

OPERATIONAL PERIOD: 9/4/21 – 9/5/21 0700-0700

DATE ISSUED: 9/3/21

TIME ISSUED: 2000

UNIT: BTU – Butte Unit

SIGNED: 

Typed/printed: Don Watt FBAN

INPUTS

WEATHER SUMMARY:

The temperatures will continue to rise through the weekend. The relative humidity will remain low, and the winds will return to a general southwest flow. Temperatures will be 75-89 degrees during the day and 39-57 degrees overnight. Humidity will be 10-17 percent during the day and 35-65 percent overnight. The wind will be west-southwest 6-10 mph with gust to 18 mph in the afternoon. Overnight winds will be southwest 4-6 mph, becoming light and variable after midnight.

OUTPUTS

FIRE BEHAVIOR

GENERAL: ****FUELS AND FIRE BEHAVIOR ADVISORY IN EFFECT FOR THE FIRE AREA****

The inversion will begin to set in stronger keeping more smoke in the fire area and decreasing humidity recovery. The shading will depend on the smoke production from the fire, which will be decreasing, especially in the northern portion of the fire. Interior islands will continue to burn out and create short range spotting if near the control lines. The portions of the fire which burned over 30 days ago are dropping needles and leaves to the ground creating a new continuous fuel bed in areas without canopy consumption. These areas will continue to smoke and become active. The heavy fuel loading in areas of the fire will continue to smolder, specifically in dozer piles and log decks until they are pulled apart and moped up.

SPECIFIC:

Lassen/Shasta Sector: The wind will return to a southwest flow, it should be light enough to have little impact on the fire, especially in the valleys and the flats. The smoke will shade the Lassen Sector most of the day, with lingering smoke in all areas at the start of the operational period. The fire activity will be ground fire with isolated torching, until wind and slope align, which could present in short crown runs in the thicker timber.

Butte Sector: The heavy materials will continue to burn out, and interior islands will continue to burn with low intensity. Stumps will continue to hold heat as the root systems continue to burn and may create new fires when the overstory falls to the ground.

Janesville Branch: The wind will return to a southwest flow, however the smoke will shade the valley to the northeast. This will limit the draw down the slope. If the valley clears and warms up, you will see increased winds down the slope in the late afternoon.

Clear/Lake Branch: The air should start to clear out throughout the day and increase activity of smoldering material. The wind will also contribute to the overstory continuing to fall to the ground creating new ground fuels and increasing activity. Any interior islands will have the potential to increase in activity.

AIR OPERATIONS

The smoke will be in the fire area longer and may limit operations throughout the day.

SAFETY

The fire burned through most areas weeks ago, allowing root systems to burn and create unstable ground with hot ash. Watch your footing, especially around burned-out stump holes.

ASSIGNMENT LIST (ICS 204 WF)

CONTROLLED UNCLASSIFIED
INFORMATION//BASIC

1. Incident Name: DIXIE WEST ZONE	2. Operational Period: Date From: 09/04/21 Date To: 09/05/21 Time From: 0700 Time To: 0700	3. Branch Group 1 / 5 / 7 Butte FSR
4. Operations Personnel:		Page 1 of 4

Operations Section Chief: M. Wink	Night Ops: M. Jonsson
Branch Director:	Branch Safety:
Division/Group Supervisor: D. Derby (Day)	Air Branch: M. Hill

5. Resources Assigned:		** Resources Below in Bold are 12 Hour **					
Resource Identifier	ALS	LWD	Leader	Personnel	Request #	Hours	Reporting Location
ENG6 BTC E652 <i>E 621</i>						0700-1900	MAGALIA ICP
ENG6 BTC E661 <i>E 664</i>						0700-1900	MAGALIA ICP
DOZ PVT E-589 <i>to Junction</i>			WYATT, JESSE	2	E-589	0700-1900	MAGALIA ICP
DOZ PVT E-809			ULSH, DALE	1	E-809	0700-1900	MAGALIA ICP
DOZ PVT E-1315						0700-1900	MAGALIA ICP
DOZ PVT E-1316						0700-1900	MAGALIA ICP
DOZ PVT E-1318			CARSON, CARY	1	E-1318	0700-1900	MAGALIA ICP
DOZ PVT E-1320			WURLITZER, GEORGE	1	E-1320	0700-1900	MAGALIA ICP
DOZ PVT E-1333			WADDINGTON, CASEY	1	E-1333	0700-1900	MAGALIA ICP
W/T PVT E-44			DUNLAP, JACOB	1	E-44	0700-1900	MAGALIA ICP
W/T PVT E-63			RANEY, MIKE	1	E-63	0700-1900	MAGALIA ICP
W/T PVT E-64			KOEHLER, RYAN	1	E-64	0700-1900	MAGALIA ICP
W/T PVT E-65			KOEHLER, RYAN	1	E-65	0700-1900	MAGALIA ICP
W/T PVT E-81			DUDUSICK, KEITH	2	E-81	0700-1900	MAGALIA ICP
W/T PVT E-111			ELLE	2	E-111	0700-1900	MAGALIA ICP
W/T PVT E-112			KEVIN	1	E-112	0700-1900	MAGALIA ICP
W/T PVT E-297			GARR, TODD	2	E-297	0700-1900	MAGALIA ICP
W/T PVT E-723			GALLETTI, MARK	2	E-723	0700-1900	MAGALIA ICP

6. Work Assignments:
Implement fire suppression repair plan.

7. Special Instructions:
Sensitive avoidance areas are flagged in red and black striped flagging. Work with Resource Advisors (REAF) on identification and protection.

8. Communications							
Name	Ch	Function	Rx Freq	Rx Tone	Tx Freq	Tx Tone	Notes
BTU CMD	6	COMMAND	154.4150	T2 - 123.0	159.0000	T4 - 136.5	USE FOR BRANCH 1/5/7 & BUTTE FSR *ONLY*
VTAC12	11	TACTICAL	154.4525	T6 - 156.7	154.4525	T6 - 156.7	
CDF T18	14	A/G TACTICAL	159.3450	T16 - 192.8	159.3450	T16 - 192.8	A/G TACTICAL - WEST ZONE
CALCORD	15	MEDICAL	156.0750N	T6 - 156.7	156.0750N	T6 - 156.7	
AIRGUARD	16	AIRGUARD	168.6250	000.0	168.6250	T1 - 110.9	EMERGENCY ONLY

9. Prepared by: Name:	R. Villarino	RESL	Signature:
ICS 204	Date/Time: 9/3/2021	2200	Personnel Count: 19

ASSIGNMENT LIST (ICS 204 WF)

CONTROLLED UNCLASSIFIED
INFORMATION//BASIC

1. Incident Name: DIXIE WEST ZONE	2. Operational Period: Date From: 09/04/21 Date To: 09/05/21 Time From: 0700 Time To: 0700	3. Branch Group 1 / 5 / 7 Butte FSR
4. Operations Personnel:		Page 2 of 3

Operations Section Chief: M. Wink	Night Ops: M. Jonsson
Branch Director:	Branch Safety:
Division/Group Supervisor: D. Derby (Day)	Air Branch: M. Hill

5. Resources Assigned:		** Resources Below in Bold are 12 Hour **					
Resource Identifier	ALS	LWD	Leader	Personnel	Request #	Hours	Reporting Location
W/T PVT E-724			McCONNELL, JOSHUA	1	E-724	0700-1900	MAGALIA ICP
W/T PVT E-726			TAYLOR, TOM	1	E-726	0700-1900	MAGALIA ICP
W/T PVT E-874			KELSEY, JOHN	1	E-874	0700-1900	MAGALIA ICP
W/T PVT E-1358			LOGUE, RICKY	1	E-1358	0700-1900	MAGALIA ICP
W/T PVT E-1366			CHRISTIANSEN, GREG	1	E-1366	0700-1900	MAGALIA ICP
W/T PVT E-1373			VASQUEZ, MIGUEL	1	E-1373	0700-1900	MAGALIA ICP
W/T PVT E-1389			MONTELLI, JON	1	E-1389	0700-1900	MAGALIA ICP
W/T PVT E-1532			WHARFF, STEVE	1	E-1532	0700-1900	MAGALIA ICP
EXC PVT E-226			WUNSCH, ALEX	1	E-226	0700-1900	MAGALIA ICP
EXC PVT E-227			KOEHLER, RYAN	1	E-227	0700-1900	MAGALIA ICP
EXC PVT E-330			MURDOCK, MIKE	2	E-330	0700-1900	MAGALIA ICP
EXC PVT E-776			FIELDS, BRUCE	1	E-776	0700-1900	MAGALIA ICP
EXC PVT E-777			MOORE, SONNY	1	E-777	0700-1900	MAGALIA ICP
EXC PVT E-807			WRIGHT, JEREMY	1	E-807	0700-1900	MAGALIA ICP
EXC PVT E-846			WURLITZER, GEORGE	1	E-846	0700-1900	MAGALIA ICP
EXC PVT E-885			DUNLOP, DAVID	1	E-885	0700-1900	MAGALIA ICP
EXC PVT E-1440			MCLERAN, RICHARD	1	E-1440	0700-1900	MAGALIA ICP
EXC PVT E-1966			CATTANEO, ANGELO	1	E-1966	0700-1900	MAGALIA ICP

6. Work Assignments:
Implement fire suppression repair plan.

7. Special Instructions:
Sensitive avoidance areas are flagged in red and black striped flagging. Work with Resource Advisors (REAF) on identification and protection.

8. Communications

Name	Ch	Function	Rx Freq	Rx Tone	Tx Freq	Tx Tone	Notes
BTU CMD	6	COMMAND	154.4150	T2 - 123.0	159.0000	T4 - 136.5	USE FOR BRANCH 1/5/7 & BUTTE FSR *ONLY*
VTAC12	11	TACTICAL	154.4525	T6 - 156.7	154.4525	T6 - 156.7	
CDF T18	14	A/G TACTICAL	159.3450	T16 - 192.8	159.3450	T16 - 192.8	A/G TACTICAL- WEST ZONE
CALCORD	15	MEDICAL	156.0750N	T6 - 156.7	156.0750N	T6 - 156.7	
AIRGUARD	16	AIRGUARD	168.6250	000.0	168.6250	T1 - 110.9	EMERGENCY ONLY

9. Prepared by: Name: R. Villarino RESL

Signature:

ICS 204 Date/Time: 9/3/2021 2200 Personnel Count: 19

ASSIGNMENT LIST (ICS 204 WF)

CONTROLLED UNCLASSIFIED
INFORMATION//BASIC

1. Incident Name: DIXIE WEST ZONE	2. Operational Period: Date From: 09/04/21 Date To: 09/05/21 Time From: 0700 Time To: 0700	3. Branch Group 1 / 5 / 7 Butte FSR
4. Operations Personnel:		Page 3 of 4

Operations Section Chief: M. Wink	Night Ops: M. Jonsson
Branch Director:	Branch Safety:
Division/Group Supervisor: D. Derby (Day)	Air Branch: M. Hill

5. Resources Assigned:	** Resources Below in Bold are 12 Hour **						
Resource Identifier	ALS	LWD	Leader	Personnel	Request #	Hours	Reporting Location
EXC PVT E-1968			CHACE, DEANE	1	E-1968	0700-1900	MAGALIA ICP
EXC PVT E-1970			BROWN, ERIC	1	E-1970	0700-1900	MAGALIA ICP
MAS PVT E-223			WURLITZER, GEORGE	1	E-223	0700-1900	MAGALIA ICP
MAS PVT E-224			WURLITZER, GEORGE	1	E-224	0700-1900	MAGALIA ICP
MAS PVT E-313			KOEHLER, RYAN	1	E-313	0700-1900	MAGALIA ICP
MAS PVT E-774			GROTEGUTH, L	1	E-774	0700-1900	MAGALIA ICP
MAS PVT E-853			GRIDLEY, DANIEL	1	E-853	0700-1900	MAGALIA ICP
MAS PVT E-2100			HAYLOR, HAYDEN	1	E-2100	0700-1900	MAGALIA ICP
SKD PVT E-1230			HALL, LUKE	1	E-1230	0700-1900	MAGALIA ICP
GRD PVT E-234			WALBERG, BUD	1	E-234	0700-1900	MAGALIA ICP
GRD PVT E-235			RICHARD, JANCE	1	E-235	0700-1900	MAGALIA ICP
GRD PVT E-236			BROWN, ERIC	2	E-236	0700-1900	MAGALIA ICP
GRD PVT E-800			ULSH, DALE	1	E-800	0700-1900	MAGALIA ICP
FIRS COLLINS			COLLINS, TIM	1	O-51	0700-1900	MAGALIA ICP
FIRS CORREA (T)			CORREA, MELISSA	1	O-828	0700-1900	MAGALIA ICP
FIRS COONAN			COONAN, NOAH	1		0700-1900	MAGALIA ICP
FIRS MCDANIEL J.			MCDANIEL, JAMES	1	O-603	0700-1900	MAGALIA ICP
THSP MERCADO			MERCADO, MICHAEL	1	O-658	0700-1900	MAGALIA ICP

6. Work Assignments:
Implement fire suppression repair plan.

7. Special Instructions:
Sensitive avoidance areas are flagged in red and black striped flagging. Work with Resource Advisors (REAF) on identification and protection.

8. Communications

Name	Ch	Function	Rx Freq	Rx Tone	Tx Freq	Tx Tone	Notes
BTU CMD	6	COMMAND	154.4150	T2 - 123.0	159.0000	T4 - 136.5	USE FOR BRANCH 1/5/7 & BUTTE FSR *ONLY*
VTAC12	11	TACTICAL	154.4525	T6 - 156.7	154.4525	T6 - 156.7	
CDF T18	14	A/G TACTICAL	159.3450	T16 - 192.8	159.3450	T16 - 192.8	A/G TACTICAL- WEST ZONE
CALCORD	15	MEDICAL	156.0750N	T6 - 156.7	156.0750N	T6 - 156.7	
AIRGUARD	16	AIRGUARD	168.6250	000.0	168.6250	T1 - 110.9	EMERGENCY ONLY

9. Prepared by: Name: R. Villarino RESL

Signature:

ICS 204 Date/Time: 9/3/2021 2200 Personnel Count: 19

ASSIGNMENT LIST (ICS 204 WF)

CONTROLLED UNCLASSIFIED
INFORMATION//BASIC

1. Incident Name: DIXIE WEST ZONE		2. Operational Period: Date From: 09/04/21 Date To: 09/05/21 Time From: 0700 Time To: 0700				3. Branch 9		Division J/K	
4. Operations Personnel:						Page 1 of 1		Juliet	
Operations Section Chief: M. Wink				Night Ops: M. Jonsson					
Branch Director: E. Smith (Day)				Branch Safety:					
Division/Group Supervisor: L. Rambo (STG TGU 9253G)				Air Branch: M. Hill					
5. Resources Assigned:		** Resources Below in Bold are 12 Hour **							
Resource Identifier	ALS	LWD	Leader	Personnel	Request #	Hours	Reporting Location		
STC OES 2870C	X		RMSTRONG, NATHANIE	21	E-471	0700-0700	DP 26		
STC						0700-0700	DP 26		
ENG GUA 681			MACK, RYAN	3	E-1346	0700-0700	DP 26		
STG TGU 9253G (CF)			RAMBO, LUCAS	31	C-169	0700-0700	DP 26		
STG						0700-0700	DP 26		
CRW						0700-0700	DP 26		
CRW						0700-0700	DP 26		
DOZ PVT E-460			BARAJAS, CONNOR	2	E-460	0700-0700	DP 26		
DOZ PVT E-604			HANNA, TAYLOR	2	E-604	0700-0700	DP 26		
DOZ PVT E-614			VAN-PELT, KYLE	1	E-614	0700-0700	DP 26		
DOZ PVT E-698			PERRY, BRETT	2	E-698	0700-0700	DP 26		
W/T PVT E-634			ZUURBIER, TOM	2	E-634	0700-1900	DP 26		
W/T PVT E-871			HORN, RANDY	2	E-871	0700-0700	DP 26		
W/T PVT E-962			HILL, CHARLES	2	E-962	0700-0700	DP 26		
W/T PVT E-1365			KOEHLER, BILL	1	E-1365	0700-1900	DP 26		
FEL FALM 0-660						0700-1900	DP 26		
FEL FALM 0-1596						0700-1900	DP 26		
6. Work Assignments: REAF DOLAN									
Mop up 200 feet in from control lines.									
Improve and hold control lines.									
Pull hose lays where no longer required.									
Backhaul trash and excess supplies.									
7. Special Instructions:									
All line supervisors check in with the cost share team at the end of your shift									
Sensitive avoidance areas are flagged in red and black striped flagging. Work with Resource Advisors (REAF) on identification and protection.									
8. Communications									
Name	Ch	Function	Rx Freq	Rx Tone	Tx Freq	Tx Tone	Notes		
NIFC C31	3	COMMAND	173.0250	000.0	163.8250	T2 - 123.0	MT LASSEN. ALL REPEATERS LINKED BACK TO ICP		
CDF T29	8	TACTICAL	151.3475	T16 - 192.8	151.3475	T16 - 192.8			
CDF T18	14	A/G TACTICAL	159.3450	T16 - 192.8	159.3450	T16 - 192.8	A/G TACTICAL - WEST ZONE		
CALCORD	15	MEDICAL	156.0750N	T6 - 156.7	156.0750N	T6 - 156.7			
AIRGUARD	16	AIRGUARD	168.6250	000.0	168.6250	T1 - 110.9	EMERGENCY ONLY		
9. Prepared by: Name:		R. Villarino		RESL		Signature:			
ICS 204		Date/Time: 9/3/2021		2200		Personnel Count: 69			

NIMS IAP

CONTROLLED UNCLASSIFIED INFORMATION//BASIC

ASSIGNMENT LIST (ICS 204 WF)

CONTROLLED UNCLASSIFIED
INFORMATION/BASIC

1. Incident Name: DIXIE WEST ZONE	2. Operational Period: Date From: 09/04/21 Date To: 09/05/21 Time From: 0700 Time To: 0700	3. Branch Division 13 N/O
----------------------------------------------------	---------------------------------------------------------------------------------------------------------------	----------------------------------------------------------

4. Operations Personnel: Page 1 of 2 November

Operations Section Chief: M. Wink	Night Ops: M. Jonsson
Branch Director: M. Klimek (Day) P. English (Day)(T) N. Bunch (Night) - Demob	Branch Safety: Ralls, Roberts (T), Culp (T)
Division/Group Supervisor: R. Mitchell (Day), J. Strait (Day)(T), T. Edwards (Day) (T), J. Martinez (Night), B. Wheeler (Night)(T)	Air Branch: M. Hill

5. Resources Assigned:		** Resources Below in Bold are 12 Hour **					
Resource Identifier	ALS	LWD	Leader	Personnel	Request #	Hours	Reporting Location
ENG3 WNP E-2		9/16		4		0700-1900	HIGHLAND RANCH SPIKE CAMP
ENG YNP 31		9/13				1900-0700	HIGHLAND RANCH SPIKE CAMP
ENG3 TRI STATE			NAPOLES, NICK	5	E-20442	0700-1900	HIGHLAND RANCH SPIKE CAMP
ENG3 STONE MTN			DICKERSON, JOHN	3	E-20443	0700-1900	HIGHLAND RANCH SPIKE CAMP
ENG3 ALTERGOTT 32		9/5	ALTERGOTT, ADAM	3	E-20044	0700-1900	HIGHLAND RANCH SPIKE CAMP
ENG6 LNP 76		9/12	TUCKER, JASON	3	E-20688	0700-1900	HIGHLAND RANCH SPIKE CAMP
STG SBC 9322G (LG)		9/20	GILLIAN, TYLER	43	C-109	0700-1900	HIGHLAND RANCH SPIKE CAMP
CRW GLOBE IHC → DIV Q			MAXWELL, DREW	20	E-20285	0700-1900	HIGHLAND RANCH SPIKE CAMP
CRW LASSEN 1		9/14				0700-1900	HIGHLAND RANCH SPIKE CAMP
W/T PVT E-45 (24hr) → DIV Q			BECKER, CLARK	2	E-45	0700-1900 OTPO	HIGHLAND RANCH SPIKE CAMP
W/T PVT E-80			LUCE, JERRY	2	E-80	0700-1900	HIGHLAND RANCH SPIKE CAMP
W/T PVT E-509 → DIV Q			HUNTSMAN, JOHN	2	E-509	0700-1900	HIGHLAND RANCH SPIKE CAMP
W/T PVT E-1377			CORP, NOAH	1	E-1377	0700-1900	HIGHLAND RANCH SPIKE CAMP
W/T PVT E-1382			FOUGHT, TRAVIS	1	E-1382	0700-1900	HIGHLAND RANCH SPIKE CAMP
W/T PVT E-1384 → DIV Q			MICHAELS, MATT	1	E-1384	0700-1900	HIGHLAND RANCH SPIKE CAMP
W/T PVT E-20095			CULP, THOMAS	1	E-20095	0700-1900	HIGHLAND RANCH SPIKE CAMP
W/T PVT E-20373			HOLT, GREGORY	1	E-20373	0700-1900	HIGHLAND RANCH SPIKE CAMP
W/T PVT E-20446 → DIV Q			REILLY, GLENN	1	E-20446	0700-1900	HIGHLAND RANCH SPIKE CAMP

6. Work Assignments: **ENG Grex 932 E-1345 ← DIV P**
Mop up 100 feet in from control lines.
Improve and hold control lines.
Fall hazard trees and trees that will threaten control lines.
Perform tactical patrol.

7. Special Instructions: **Santa Monica REMS, EMPF Horvath and EMPF Terry on a 24 hour shift.**
Utilize rubber track equipment on roads inside the Park where practicable.
Sensitive avoidance areas are flagged in red and black striped flagging. Work with Resource Advisors (REAF) on identification and protection.
REAFs and ARCHs listed on Div N are assigned to Divs N/O/P.

8. Communications

Name	Ch	Function	Rx Freq	Rx Tone	Tx Freq	Tx Tone	Notes
NIFC C31	3	COMMAND	173.0250	000.0	163.8250	T2 - 123.0	MT LASSEN. ALL REPEATERS LINKED BACK TO ICP
CDF T31	10	TACTICAL	159.3825	T16 - 192.8	159.3825	T16 - 192.8	
CDF T18	14	A/G TACTICAL	159.3450	T16 - 192.8	159.3450	T16 - 192.8	A/G TACTICAL- WEST ZONE
CALCORD	15	MEDICAL	156.0750N	T6 - 156.7	156.0750N	T6 - 156.7	
AIRGUARD	16	AIRGUARD	168.6250	000.0	168.6250	T1 - 110.9	EMERGENCY ONLY

9. Prepared by: Name: R. Villarino RESL Signature:

ICS 204 Date/Time: 9/3/2021 2200 Personnel Count: 93

ASSIGNMENT LIST (ICS 204 WF)

CONTROLLED UNCLASSIFIED
INFORMATION/BASIC

1. Incident Name: DIXIE WEST ZONE		2. Operational Period: Date From: 09/04/21 Date To: 09/05/21 Time From: 0700 Time To: 0700				3. Branch 13		Division P		
4. Operations Personnel:						Page 1 of 2		Papa		
Operations Section Chief: M. Wink			Night Ops: M. Jonsson			Branch Director: M. Klimek (Day) P. English (Day)(T) N. Bunch (Night) - Demob		Branch Safety: Ralls, Roberts (T), Culp (T)		
Division/Group Supervisor: Z. Palmer (Day) B. Hilderbrand (Day)(T) O. Genao (Night)			Air Branch: M. Hill							
5. Resources Assigned:		** Resources Below in Bold are 12 Hour **								
Resource Identifier	ALS	LWD	Leader	Personnel	Request #	Hours	Reporting Location			
ENG3 LNF 312		9/11	MILLER, SHAUN	5	E-20439	0700-1900	SUSANVILLE ICP			
ENG3 LNF 314						0700-1900	SUSANVILLE ICP			
ENG3 TNF 333			BAKKER, BILL	5	E-21094	0700-1900	SUSANVILLE ICP			
ENG3 GREX 932		9/8	GREGOR, RYAN	4	E-1345	0700-1900	SUSANVILLE ICP			
ENG3 NOD 8337			GOUVEIA, JEFF	5	E-21267	0700-1900	SUSANVILLE ICP			
ENG4 BLAZE RUNNER 18			CARLSON, AARON	4	E-21177	0700-1900	SUSANVILLE ICP			
ENG6 TNF 1245			SUNDBLOM, CONNOR	6	E-21102	0700-1900	SUSANVILLE ICP			
T/F UTNWS 2 (12 hr)	X	9/8	LOVE, RYAN	21	E-1891	0700-0700	SUSANVILLE ICP			
CRW LNF 3		9/3	Jake Fitzgerald			0700-1900	SUSANVILLE ICP			
WFM LNF EAGLE LAKE O-1167			WHEELER, BEN	7	O-1167	0700-1900	SUSANVILLE ICP			
CRW LNF 8 (Eagle Lake crew)		9/11				0700-1900	SUSANVILLE ICP			
CRW1 C-LASSEN CREW 9			HERNANDEZ, JAKE	16	C-20082	0700-1900	SUSANVILLE ICP			
DOZ AZ 48						0700-1900	SUSANVILLE ICP			
DOZ PVT E-630 (24 hr)			MOORE, DYLAN	2	E-630	0700-1900	SUSANVILLE ICP			
DOZ PVT E-655 (24 hr)			DAVIS, LEE	2	E-655	0700-1900	SUSANVILLE ICP			
DOZ PVT E-1017			HOLTZ, RICHARD	2	E-1017	0700-0700	SUSANVILLE ICP			
W/T PVT E-267			SEABOURN, MIKE	1	E-267	0700-1900	SUSANVILLE ICP			
W/T PVT E-865			KITCHENS, RYAN	1	E-865	0700-1900	SUSANVILLE ICP			
6. Work Assignments: Mop up 100 feet in from control lines. Hold and improve control lines. Fall hazard trees and trees that will threaten control lines. Prepare for firing operations. <i>DOZ E-1018 From Div Q</i> <i>MAS E-1443 from Shasta Cont.</i>										
7. Special Instructions: **Santa Monica REMS, EMPF Horvath and EMPF Terry on a 24 hour shift.** Use MIST tactics along trail track where practicle and follow REAF guidance on line placement. REAFs and ARCHs listed on Div N are assigned to Divs N/O/P.										
8. Communications										
Name	Ch	Function	Rx Freq	Rx Tone	Tx Freq	Tx Tone	Notes			
NIFC C10	2	COMMAND	170.4125	000.0	165.9625	T2 - 123.0	DYER MTN. ALL REPEATERS LINKED BACK TO ICP			
VTAC13	12	TACTICAL	158.7375	T6 - 156.7	158.7375	T6 - 156.7				
CDF T18	14	A/G TACTICAL	159.3450	T16 - 192.8	159.3450	T16 - 192.8	A/G TACTICAL - WEST ZONE			
CALCORD	15	MEDICAL	156.0750N	T6 - 156.7	156.0750N	T6 - 156.7				
AIRGUARD	16	AIRGUARD	168.6250	000.0	168.6250	T1 - 110.9	EMERGENCY ONLY			
9. Prepared by: Name: R. Villarino			RESL			Signature:				
ICS 204		Date/Time: 9/3/2021 2200		Personnel Count: 81						

NIMS IAP

CONTROLLED UNCLASSIFIED INFORMATION/BASIC

ASSIGNMENT LIST (ICS 204 WF)

CONTROLLED UNCLASSIFIED
INFORMATION//BASIC

1. Incident Name: DIXIE WEST ZONE	2. Operational Period: Date From: 09/04/21 Date To: 09/05/21 Time From: 0700 Time To: 0700	3. Branch Division 13 P
----------------------------------------------------	---------------------------------------------------------------------------------------------------------------	--------------------------------------------------------

4. Operations Personnel:		Page 2 of 2 Papa
Operations Section Chief: M. Wink	Night Ops: M. Jonsson	
Branch Director: M. Klimek (Day) P. English (Day)(T) N. Bunch (Night) Demob	Branch Safety: Ralls, Roberts (T), Culp (T)	
Division/Group Supervisor: Z. Palmer (Day) B. Hilderbrand (Day)(T) O. Genao (Night)	Air Branch: M. Hill	

5. Resources Assigned:	** Resources Below in Bold are 12 Hour **						
Resource Identifier	ALS	LWD	Leader	Personnel	Request #	Hours	Reporting Location
W/T PVT E-1051			HEINE, STEPHEN	2	E-1051	0700-0700	SUSANVILLE ICP
W/T PVT E-1068 <i>(24 hr)</i>			DOERING, GLEN	2	E-1068	0700-1900 <i>6700</i>	SUSANVILLE ICP
W/T PVT E-1394			EVANS, LEWIS	1	E-1394	0700-1900	SUSANVILLE ICP
W/T PVT E-1791			SMITH, ANDREW	2	E-1791	0700-0700	SUSANVILLE ICP
MAS PVT E-279			POTTER, GREG	1	E-279	0700-1900	SUSANVILLE ICP
MAS PVT E-327			CAMPELL, MARK	1	E-327	0700-1900	SUSANVILLE ICP
MAS PVT E-1224			SCHMAUS, RICK	1	E-1224	0700-1900	SUSANVILLE ICP
MAS PVT E-1439			GARMIN, KEITH	1	E-1439	0700-1900	SUSANVILLE ICP
PROS PVT E-1598			CROOK, SHAUN	1	E-1598	0700-1900	SUSANVILLE ICP
HEQB FLYNN <i>off</i>			FLYNN	1		0700-1900	SUSANVILLE ICP
HEQB COSTELLO			COSTELLO, TANYA	1	O-21716	0700-1900	SUSANVILLE ICP
HEQB WEBER			WEBER, DAVID	1	O-1061	0700-1900	SUSANVILLE ICP
REAF HIEDE		9/9		1		0700-1900	SUSANVILLE ICP
REAF WESTPHAL		9/7	WESTPHAL, MICHAEL	1	O-21511	0700-1900	SUSANVILLE ICP
REAF WOODS		9/6	WOODS, BONNIE	1	O-21351	0700-1900	SUSANVILLE ICP
ARCH THOMAS							SUSANVILLE ICP
<i>REAF Freedom Hagan ←</i>							

6. Work Assignments:
Mop up 100 feet in from control lines.
Hold and improve control lines.
Fall hazard trees and trees that will threaten control lines.
Prepare for firing operations.

7. Special Instructions: **Santa Monica REMS, EMPF Horvath and EMPF Terry on a 24 hour shift.**
Use MIST tactics along trail track where practicle and follow REAF guidance on line placement.
REAFs and ARCHs listed on Div N are assigned to Divs N/O/P.

8. Communications							
Name	Ch	Function	Rx Freq	Rx Tone	Tx Freq	Tx Tone	Notes
NIFC C10	2	COMMAND	170.4125	000.0	165.9625	T2 - 123.0	DYER MTN. ALL REPEATERS LINKED BACK TO ICP
VTAC13	12	TACTICAL	158.7375	T6 - 156.7	158.7375	T6 - 156.7	
CDF T18	14	A/G TACTICAL	159.3450	T16 - 192.8	159.3450	T16 - 192.8	A/G TACTICAL- WEST ZONE
CALCORD	15	MEDICAL	156.0750N	T6 - 156.7	156.0750N	T6 - 156.7	
AIRGUARD	16	AIRGUARD	168.6250	000.0	168.6250	T1 - 110.9	EMERGENCY ONLY

9. Prepared by: Name: R. Villarino	RESL	Signature:	
ICS 204	Date/Time: 9/3/2021 2200	Personnel Count: 18	

NIMS IAP

CONTROLLED UNCLASSIFIED INFORMATION//BASIC

ASSIGNMENT LIST (ICS 204 WF)

CONTROLLED UNCLASSIFIED
INFORMATION//BASIC

1. Incident Name: DIXIE WEST ZONE		2. Operational Period: Date From: 09/04/21 Date To: 09/05/21 Time From: 0700 Time To: 0700				3. Branch Shasta Contingency		Group
								Page 1 of 2
4. Operations Personnel:								
Operations Section Chief: M. Wink				Night Ops: M. Jonsson				
Branch Director: A. Stornetta (Day)				Branch Safety:				
Division/Group Supervisor:				Air Branch: M. Hill				
5. Resources Assigned:								
** Resources Below in Bold are 12 Hour **								
Resource Identifier	ALS	LWD	Leader	Personnel	Request #	Hours	Reporting Location	
ENG6 FBDX BRUSH 20			ALDRICH, DUSTIN	5	E-2013	0700-1900	DP 296	
ENG6 IDPVT BIG STATE		9/8	VALENTINE, PAUL	3	E-21101	0700-1900	DP 296	
W/T PVT E-48 <i>NO Show</i>			FUNES, ANTHONY	1	E-48	0700-1900	DP 296	
W/T PVT E-265			GREG SIMERAL	2	E-265	0700-1900	DP 296	
W/T PVT E-266			ANDERSON, JEFF	1	E-266	0700-1900	DP 296	
W/T PVT E-276			WHARFF, ALAN	1	E-276	0700-1900	DP 296	
W/T PVT E-960			WOOTEN, BILLY	2	E-960	0700-0700	DP 296	
W/T PVT E-1057 <i>(12hr)</i>		<i>Luce, Paul</i>	CRIBBS, JOHNNY	2	E-1057	0700-0700	DP 296	
W/T PVT E-1058			BENEGAS, JOSE	2	E-1058	0700-1900	DP 296	
W/T PVT E-1181			SHULTS, JUSTIN	1	E-1181	0700-1900	DP 296	
W/T PVT E-1372			FREDRICKSON, CAMERON	1	E-1372	0700-1900	DP 296	
W/T PVT E-1375			RAMSEY, RON	1	E-1375	0700-1900	DP 296	
W/T PVT E-1388			JONES, ED	1	E-1388	0700-1900	DP 296	
MAS PVT E-54			HERTZG, JOHN	1	E-54	0700-1900	DP 296	
MAS PVT E-55				1	E-55	0700-1900	DP 296	
MAS PVT E-222			WURLITZER, GEORGE	1	E-222	0700-1900	DP 296	
MAS PVT E-240			HOLT, KELLY	1	E-240	0700-1900	DP 296	
MAS PVT E-316			LAWLESS, GARY	1	E-316	0700-1900	DP 296	
6. Work Assignments:								
Improve and hold control lines.								
Plan secondary control lines, begin if possible.								
Fall hazard trees and trees that will threaten control lines.								
Continue with contingency line prep along Highway 89.								
7. Special Instructions:								
Maintain a minimum of 15' from the PCT while constructing contingency line.								
Use MIST tactics when able. Avoid arch sites and private water systems.								
8. Communications								
Name	Ch	Function	Rx Freq	Rx Tone	Tx Freq	Tx Tone	Notes	
NIFC C31	3	COMMAND	173.0250	000.0	163.8250	T2 - 123.0	MT LASSEN. ALL REPEATERS LINKED BACK TO ICP	
CDF T31	10	TACTICAL	159.3825	T16 - 192.8	159.3825	T16 - 192.8		
CDF T18	14	A/G TACTICAL	159.3450	T16 - 192.8	159.3450	T16 - 192.8	A/G TACTICAL- WEST ZONE	
CALCORD	15	MEDICAL	156.0750N	T6 - 156.7	156.0750N	T6 - 156.7		
AIRGUARD	16	AIRGUARD	168.6250	000.0	168.6250	T1 - 110.9	EMERGENCY ONLY	
9. Prepared by: Name: R. Villarino RESL								
						Signature:		
ICS 204		Date/Time: 9/3/2021 2200				Personnel Count: 28		

ASSIGNMENT LIST (ICS 204 WF)

CONTROLLED UNCLASSIFIED
INFORMATION//BASIC

1. Incident Name: DIXIE WEST ZONE		2. Operational Period: Date From: 09/04/21 Date To: 09/05/21 Time From: 0700 Time To: 0700				3. Branch Shasta Contingency	
						Page 2 of 2	
4. Operations Personnel:							
Operations Section Chief: M. Wink		Night Ops: M. Jonsson		Branch Safety:			
Branch Director: A. Stornetta (Day)		Air Branch: M. Hill		Division/Group Supervisor:			
5. Resources Assigned:		** Resources Below in Bold are 12 Hour **					
Resource Identifier	ALS	LWD	Leader	Personnel	Request #	Hours	Reporting Location
MAS PVT E-326			KORHUNIAK, PAUL	1	E-326	0700-1900	DP 296
MAS PVT E-852			WURLITZER, GEORGE	1	E-852	0700-1900	DP 296
MAS PVT E-889			BYERS, CAMERON	1	E-889	0700-1900	DP 296
MAS PVT E-1437			PAYTON, MICHELLE	1	E-1437	0700-1900	DP 296
MAS PVT E-1438			SHULTS, JUSTIN	1	E-1438	0700-1900	DP 296
MAS PVT E-1442			PEZZI, ANTHONY	1	E-1442	0700-1900	DP 296
MAS PVT E-1443 → DIV P			HUSKY, DAVID	1	E-1443	0700-1900	DP 296
MAS PVT E-2098			RHODES, AUSTIN	1	E-2098	0700-1900	DP 296
MAS PVT E-2099			BERGMAN, ROGER	1	E-2099	0700-1900	DP 296
GRD PVT E-1177 → Lassen Cont			LEPAGE, JIM	2	E-1177	0700-1900	DP 296
FEL PVT E-324			WARNER, GARY	2	E-324	0700-1900	DP 296
FEL PVT E-1120			GIBBS, WAYNE	1	E-1120	0700-1900	DP 296
SKD PVT E-1183			TAYLOR, WES	1	E-1183	0700-1900	DP 296
SKD PVT E-1231			TAYLOR, WES	1	E-1231	0700-1900	DP 296
SKD PVT E-1232			ABERCROMBIE, CORRIE	1	E-1232	0700-1900	DP 296
HEQB KENNEDY			KENNEDY, MARTIN	1	O-1218	0700-0700	DP 296
SKD E-1182 ← DIV Q							
6. Work Assignments: Improve and hold control lines. Plan secondary control lines, begin if possible. Fall hazard trees and trees that will threaten control lines. Continue with contingency line prep along Highway 89.							
7. Special Instructions: Maintain a minimum of 15' from the PCT while constructing contingency line. Use MIST tactics when able. Avoid arch sites and private water systems.							
8. Communications							
Name	Ch	Function	Rx Freq	Rx Tone	Tx Freq	Tx Tone	Notes
NIFC C31	3	COMMAND	173.0250	000.0	163.8250	T2 - 123.0	MT LASSEN. ALL REPEATERS LINKED BACK TO ICP
CDF T31	10	TACTICAL	159.3825	T16 - 192.8	159.3825	T16 - 192.8	
CDF T18	14	A/G TACTICAL	159.3450	T16 - 192.8	159.3450	T16 - 192.8	A/G TACTICAL - WEST ZONE
CALCORD	15	MEDICAL	156.0750N	T6 - 156.7	156.0750N	T6 - 156.7	
AIRGUARD	16	AIRGUARD	168.6250	000.0	168.6250	T1 - 110.9	EMERGENCY ONLY
9. Prepared by: Name:		R. Villarino		RESL		Signature:	
ICS 204		Date/Time: 9/3/2021		2200		Personnel Count: 18	

NIMS IAP

CONTROLLED UNCLASSIFIED INFORMATION//BASIC

ASSIGNMENT LIST (ICS 204 WF)

CONTROLLED UNCLASSIFIED
INFORMATION//BASIC

1. Incident Name: DIXIE WEST ZONE	2. Operational Period: Date From: 09/04/21 Date To: 09/05/21 Time From: 0700 Time To: 0700	3. Branch Division 16 Q Page 1 of 3 Quebec
----------------------------------------------------	---------------------------------------------------------------------------------------------------------------	-----------------------------------------------------------------------------------------

4. Operations Personnel: Operations Section Chief: M. Wink Branch Director: M. Petro Division/Group Supervisor: M. Medeiros (T)	Night Ops: M. Jonsson Branch Safety: Thomas (Day), Boston (T), Newton (T) Air Branch: M. Hill
----------------------------------------------------------------------------------------------------------------------------------------------------------------------	--------------------------------------------------------------------------------------------------------------------------

5. Resources Assigned:		** Resources Below in Bold are 12 Hour **					
Resource Identifier	ALS	LWD	Leader	Personnel	Request #	Hours	Reporting Location
STC MRN 9150C	X		NUNES, TOM	16	E-121	0700-0700	DP 146
STC TGU 9250C			TRULL, GABRIEL	17	E-1742	0700-0700	DP 146
STC						0700-0700	DP 146
STC						0700-0700	DP 146
STC						0700-0700	DP 146
ENG3 OES 6320			HO, VINH	3	E-1343	0700-0700	DP 146
STF						0700-0700	DP 146
STG SHU 9243G (CDCR)		9/12	TAVALERO, GREG	33	C-170	0700-0700	DP 146
STG						0700-0700	DP 146
DOZ PVT E-979			OFERRALL, TRAVIS	2	E-979	0700-0700	DP 146
DOZ PVT E-980			WISEMAN, ERWIN	2	E-980	0700-0700	DP 146
DOZ PVT E-1018 → to DIV P			JOHNSON, DAN	2	E-1018	0700-0700	DP 146
DOZ PVT E-1087			WELLS, TYLER	2	E-1087	0700-1900	DP 146
DOZ PVT E-1090			PERRY, BRETT	2	E-1090	0700-0700	DP 146
DOZ PVT E-1321			SLOTTE, JESSIE	2	E-1321	0700-0700	DP 146
DOZ PVT E-1426			GEVAS, DAVE	2	E-1426	0700-0700	DP 146
DOZ PVT E-1429			ROBISON, KEVIN	2	E-1429	0700-1900	DP 146
DOZ PVT E-1430			RUBINI, NATHAN	3	E-1430	0700-0700	DP 146

6. Work Assignments:
 Mop up 200 feet in from control lines.
 Construct control lines from Bogards Buttes to Highway 44.
 Fall hazard trees and trees that will threaten control lines.

7. Special Instructions: **EMPF Dmytriw and EMPF Elkins on a 24 hour shift.**
 All line supervisors check in with the cost share team at the end of your shift
 Sensitive avoidance areas are flagged in red and black striped flagging. Work with Resource Advisors (REAF) on identification and protection.
 Patrol the Division for spot fires over identified control lines. Maintain roads in the Division.

8. Communications

Name	Ch	Function	Rx Freq	Rx Tone	Tx Freq	Tx Tone	Notes
NIFC C99	B.6	COMMAND	170.1375	000.0	165.5000	T2 - 123.0	W. PROSPECT PK. ALL REPEATERS LINK BACK TO ICP.
VFIRE 25	10	TACTICAL	154.2875N	T6 - 156.7	154.2875N	T6 - 156.7	
CDF T18	14	A/G TACTICAL	159.3450	T16 - 192.8	159.3450	T16 - 192.8	A/G TACTICAL- WEST ZONE
CALCORD	15	MEDICAL	156.0750N	T6 - 156.7	156.0750N	T6 - 156.7	
AIRGUARD	16	AIRGUARD	168.6250	000.0	168.6250	T1 - 110.9	EMERGENCY ONLY

9. Prepared by: Name: R. Villarino RESL Signature:

ICS 204 Date/Time: 9/3/2021 2200 Personnel Count: 88

ASSIGNMENT LIST (ICS 204 WF)

CONTROLLED UNCLASSIFIED
INFORMATION//BASIC

1. Incident Name: DIXIE WEST ZONE	2. Operational Period: Date From: 09/04/21 Date To: 09/05/21 Time From: 0700 Time To: 0700	3. Branch Division 16 Q
4. Operations Personnel:		Page 2 of 3 Quebec

Operations Section Chief: M. Wink	Night Ops: M. Jonsson
Branch Director: M. Petro	Branch Safety: Thomas (Day), Boston (T), Newton (T)
Division/Group Supervisor: M. Medeiros (T)	Air Branch: M. Hill

5. Resources Assigned:		** Resources Below in Bold are 12 Hour **					
Resource Identifier	ALS	LWD	Leader	Personnel	Request #	Hours	Reporting Location
W/T PVT E-638			DOLER, DERRICK	2	E-638	0700-0700	DP 146
W/T PVT E-864			PARRIOTT, JARED	2	E-864	0700-0700	DP 146
W/T PVT E-873			BEARDSLEY, JESSIE	1	E-873	0700-1900	DP 146
W/T PVT E-964			JONES, ERNEST	2	E-964	0700-0700	DP 146
W/T PVT E-1393			SCHOLTEN, DUTCH	1	E-1393	0700-1900	DP 146
W/T PVT E-1396			WILBER, RANDY	1	E-1396	0700-1900	DP 146
W/T PVT E-1397			PULLEY, COLE	2	E-1397	0700-0700	DP 146
W/T PVT E-1480			KEENE, ROBERT	1	E-1480	0700-1900	DP 146
W/T PVT E-1895	<i>No show</i>	<i>Staging</i>			E-1895	0700-0700	DP 146
W/T PVT E-1901			KNIGHT, VICTOR	1	E-1901	0700-1900	DP 146
W/T PVT E-1902	<i>No show</i>		GOOKIN, JAKE	2	E-1902	0700-0700	DP 146
MAS PVT E-1441			NORTH, MICHAEL	1	E-1441	0700-1900	DP 146
MAS PVT E-1436			SCHAPER, MICHAEL	2	E-1436	0700-1900	DP 146
MAS PVT E-2097			LONG, DACOTA	1	E-2097	0700-1900	DP 146
MAS PVT E-2101			BRITTEN, BEN	1	E-2101	0700-1900	DP 146
EXC PVT E-1806	<i>no show</i>		PAYTON, MICHELLE	1	E-1806	0700-1900	DP 146
EXC PVT E-1907			MILLER, HAROLD	1	E-1907	0700-1900	DP 146
SKD PVT E-1127	<i>no show</i>		SEARL, JOHN	1	E-1127	0700-1900	DP 146

6. Work Assignments:
Mop up 200 feet in from control lines.
Construct control lines from Bogards Buttes to Highway 44.
Fall hazard trees and trees that will threaten control lines.

7. Special Instructions: **EMPF Dmytriw and EMPF Elkins on a 24 hour shift.**
All line supervisors check in with the cost share team at the end of your shift
Sensitive avoidance areas are flagged in red and black striped flagging. Work with Resource Advisors (REAF) on identification and protection.
Patrol the Division for spot fires over identified control lines. Maintain roads in the Division.

8. Communications

Name	Ch	Function	Rx Freq	Rx Tone	Tx Freq	Tx Tone	Notes
NIFC C99	B.6	COMMAND	170.1375	000.0	165.5000	T2 - 123.0	W. PROSPECT PK. ALL REPEATERS LINK BACK TO ICP.
VFIRE 25	10	TACTICAL	154.2875N	T6 - 156.7	154.2875N	T6 - 156.7	
CDF T18	14	A/G TACTICAL	159.3450	T16 - 192.8	159.3450	T16 - 192.8	A/G TACTICAL- WEST ZONE
CALCORD	15	MEDICAL	156.0750N	T6 - 156.7	156.0750N	T6 - 156.7	
AIRGUARD	16	AIRGUARD	168.6250	000.0	168.6250	T1 - 110.9	EMERGENCY ONLY

9. Prepared by: Name: R. Villarino RESL

Signature:

ICS 204 Date/Time: 9/3/2021 2200 Personnel Count: 23

NIMS IAP

CONTROLLED UNCLASSIFIED INFORMATION//BASIC

ASSIGNMENT LIST (ICS 204 WF)

CONTROLLED UNCLASSIFIED
INFORMATION/BASIC

1. Incident Name: DIXIE WEST ZONE	2. Operational Period: Date From: 09/04/21 Date To: 09/05/21 Time From: 0700 Time To: 0700	3. Branch Division 16 Q Page 3 of 3 Quebec
----------------------------------------------------	---------------------------------------------------------------------------------------------------------------	-----------------------------------------------------------------------------------------

4. Operations Personnel:	
Operations Section Chief: M. Wink	Night Ops: M. Jonsson
Branch Director: M. Petro	Branch Safety: Thomas (Day), Boston (T), Newton (T)
Division/Group Supervisor: M. Medeiros (T)	Air Branch: M. Hill

5. Resources Assigned:		** Resources Below in Bold are 12 Hour **					
Resource Identifier	ALS	LWD	Leader	Personnel	Request #	Hours	Reporting Location
SKD PVT E-1182 → <i>Shasta Cont.</i>			TAYLOR, WES	1	E-1182	0700-1900	DP 146
SKD PVT E-1229			EASTMAN, WESLEY	1	E-1229	0700-1900	DP 146
HEQB						0700-0700	DP 146
HEQB						0700-0700	DP 146
TFLD SEYMOUR			SEYMOUR, RON E	1	O-1171	0700-0700	DP 146
TFLD WEEMS (T)			WEEMS, JUSTIN	1	O-1232	0700-0700	DP 146
FALM PVT O-758			RILEY	1	O-758	0700-1900	DP 146
FALM PVT O-1596 → <i>DIV J/K</i>			KUNY, DANNY	2	O-1596	0700-1900	DP 146
REAF OLIN		9/9	OLIN, GRANT	1	O-20758	0700-1900	DP 146
REAF GERN		9/8	GERN, HANNAH	1	O-21494	0700-1900	DP 146
REAF FREDENHAGEN → <i>DIV P</i>		9/13		1		0700-1900	DP 146
ARCH ALLEN		9/8	ALLEN, TYLER	1	O-21033	0700-1900	DP 146
ARCH SEGROVES		9/5	SEGROVES, ADAM	1	O-21044	0700-1900	DP 146
<i>WIT E-45</i> ← <i>DIV N/O</i>							
<i>WIT E-509</i> ← " "							
<i>WIT E-1384</i> ← " "							
<i>WIT E-20446</i> ← " "							
<i>CRW Glob IHC</i> ← " "							

6. Work Assignments: *CRW Lesson 9 C-200802 ← DIV P*
Mop up 200 feet in from control lines. *GRD E-1957 ← Stage*
Construct control lines from Bogards Buttes to Highway 44.
Fall hazard trees and trees that will threaten control lines.

7. Special Instructions: **EMPF Dmytriw and EMPF Elkins on a 24 hour shift.**
All line supervisors check in with the cost share team at the end of your shift
Sensitive avoidance areas are flagged in red and black striped flagging. Work with Resource Advisors (REAF) on identification and protection.
Patrol the Division for spot fires over identified control lines. Maintain roads in the Division.

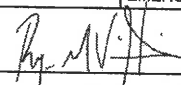
8. Communications							
Name	Ch	Function	Rx Freq	Rx Tone	Tx Freq	Tx Tone	Notes
NIFC C99	B.6	COMMAND	170.1375	000.0	165.5000	T2 - 123.0	W. PROSPECT PK. ALL REPEATERS LINK BACK TO ICP.
VFIRE 25	10	TACTICAL	154.2875N	T6 - 156.7	154.2875N	T6 - 156.7	
CDF T18	14	A/G TACTICAL	159.3450	T16 - 192.8	159.3450	T16 - 192.8	A/G TACTICAL- WEST ZONE
CALCORD	15	MEDICAL	156.0750N	T6 - 156.7	156.0750N	T6 - 156.7	
AIRGUARD	16	AIRGUARD	168.6250	000.0	168.6250	T1 - 110.9	EMERGENCY ONLY

9. Prepared by: Name: R. Villarino	RESL	Signature:
-------------------------------------------	------	------------

ICS 204	Date/Time: 9/3/2021 2200	Personnel Count: 12
----------------	--------------------------	---------------------

ASSIGNMENT LIST (ICS 204 WF)

CONTROLLED UNCLASSIFIED
INFORMATION//BASIC

1. Incident Name: DIXIE WEST ZONE		2. Operational Period: Date From: 09/04/21 Date To: 09/05/21 Time From: 0700 Time To: 0700			3. Branch Division 16 R		
4. Operations Personnel:					Page 1 of 2 Romeo		
Operations Section Chief: M. Wink		Night Ops: M. Jonsson					
Branch Director: M. Petro		Branch Safety: Thomas (Day), Boston (T), Newton (T)					
Division/Group Supervisor: M. Milojevich, T. Carey (T)		Air Branch: M. Hill					
5. Resources Assigned:							
** Resources Below in Bold are 12 Hour **							
Resource Identifier	ALS	LWD	Leader	Personnel	Request #	Hours Reporting Location	
STC MEU 9110C			MIKESSELL, ALEX	18	E-120	0700-0700 DP 146	
STC LNU 9142C			MAIN, ZACHARY	16	E-1661	0700-0700 DP 146	
STC						0700-0700 DP 146	
STC						0700-0700 DP 146	
ENG3 TULX 2133						0700-1900 DP 146	
STF OES 6805F	X		MAJCHRZAK, JAIME	19	E-415	0700-0700 DP 146	
T/F XSL 1473	X		LEWIS, BRIAN <i>Hughes, Tom</i>	18	E-954	0700-0700 DP 146	
STG <i>92126 ← S/T/L</i>						0700-0700 DP 146	
STG						0700-0700 DP 146	
CRW						0700-0700 DP 146	
CRW						0700-0700 DP 146	
STL MMU 9428L			WOLFORD, KEITH	7	E-1015	0700-0700 DP 146	
DOZ PVT E-587			RESTAD, BRUCE	4	E-587	0700-0700 DP 146	
DOZ PVT E-1427			MEIER, JON	2	E-1427	0700-0700 DP 146	
DOZ PVT E-1433			COOKSON, SAM	2	E-1433	0700-0700 DP 146	
DOZ PVT E-1935			TWISSELMAN, ETHAN	2	E-1935	0700-0700 DP 146	
W/T PVT E-115			BENSON, AL	1	E-115	0700-1900 DP 146	
W/T PVT E-491 <i>no show</i>			DUNLOP, DON	1	E-491	0700-1900 DP 146	
6. Work Assignments:							
Mop up 300' in from control line.							
Construct control lines as direct as possible.							
Backhaul trash and excess supplies.							
Fall hazard trees and trees that will threaten control lines.							
7. Special Instructions: **EMPF Dmytriw and EMPF Elkins on a 24 hour shift.**							
All line supervisors check in with the cost share team at the end of your shift							
Sensitive avoidance areas are flagged in red and black striped flagging. Work with Resource Advisors (REAF) on identification and protection.							
Patrol the entire Division. Maintain roads.							
8. Communications							
Name	Ch	Function	Rx Freq	Rx Tone	Tx Freq	Tx Tone	Notes
NIFC C89	B.3	COMMAND	173.7375	000.0	164.0125	T2 - 123.0	ANTELOPE L.O. ALL REPEATERS LINK BACK TO ICP.
NIFC T1	12	TACTICAL	168.0500N	T2 - 123.0	168.0500N	T2 - 123.0	
CDF T18	14	A/G TACTICAL	159.3450	T16 - 192.8	159.3450	T16 - 192.8	A/G TACTICAL- WEST ZONE
CALCORD	15	MEDICAL	156.0750N	T6 - 156.7	156.0750N	T6 - 156.7	
AIRGUARD	16	AIRGUARD	168.6250	000.0	168.6250	T1 - 110.9	EMERGENCY ONLY
9. Prepared by: Name: R. Villarino RESL							
					Signature: 		Personnel Count: 90
ICS 204		Date/Time: 9/3/2021 2200					

NIMS IAP

CONTROLLED UNCLASSIFIED INFORMATION//BASIC

ASSIGNMENT LIST (ICS 204 WF)

CONTROLLED UNCLASSIFIED
INFORMATION/BASIC

1. Incident Name: DIXIE WEST ZONE	2. Operational Period: Date From: 09/04/21 Date To: 09/05/21 Time From: 0700 Time To: 0700	3. Branch Division 16 S/T/U
4. Operations Personnel:		Page 1 of 1

Operations Section Chief: M. Wink	Night Ops: M. Jonsson
Branch Director: M. Petro	Branch Safety: Thomas (Day), Boston (T), Newton (T)
Division/Group Supervisor: C. Costa	Air Branch: M. Hill

5. Resources Assigned:		** Resources Below in Bold are 12 Hour **					
Resource Identifier	ALS	LWD	Leader	Personnel	Request #	Hours	Reporting Location
STF						0700-0700	DP 140
ENG4 BLM 2429			GRIFFIN, TAYLOR	4	E-21182	0700-1900	DP 140
ENG6 VAIL B3			RAMIREZ, JOSUE	3	E-21096	0700-1900	DP 140
T/F XSN 2397			MEDEIROS, MIKE	17	E-945	0700-0700	DP 140
STG BTU 9212G (CCC) <i>to DIV R</i>			FINKENKELLER, KEVIN	36	C-38	0700-0700	DP 140
CRW						0700-0700	DP 140
CRW						0700-0700	DP 140
CRW						0700-0700	DP 140
CRW						0700-0700	DP 140
W/T PVT E-51			ALEXANDER, LUKE	2	E-51	0700-0700	DP 140
W/T PVT E-965			GINGERICH, BRYAN	2	E-965	0700-0700	DP 140
W/T PVT E-1374			LONG, NATHAN	2	E-1374	0700-0700	DP 140
W/T PVT E-1385			RICHIE, ALEX	2	E-1385	0700-0700	DP 140
EXC PVT E-2111			SNEED, BUDDY	1	E-2111	0700-1900	DP 140
<i>EXC PVT E-2001 ← Lassen Cont</i>							

6. Work Assignments:
Mop up 200 feet in from control lines.
Improve and hold control lines.
Perform tactical patrol.
Mop up around structures within fire perimeter.

7. Special Instructions: **EMPF Dmytriw and EMPF Elkins on a 24 hour shift.**
All line supervisors check in with the cost share team at the end of your shift
Sensitive avoidance areas are flagged in red and black striped flagging. Work with Resource Advisors (REAF) on identification and protection.
Maintain roads. Patrol the entire Division for spot fires over identified control lines.

8. Communications

Name	Ch	Function	Rx Freq	Rx Tone	Tx Freq	Tx Tone	Notes
NIFC C89	B.3	COMMAND	173.7375	000.0	164.0125	T2 - 123.0	ANTELOPE I.O. ALL REPEATERS LINK BACK TO ICP.
VFIRE 26	11	TACTICAL	154.3025N	T6 - 156.7	154.3025N	T6 - 156.7	
CDF T18	14	A/G TACTICAL	159.3450	T16 - 192.8	159.3450	T16 - 192.8	A/G TACTICAL - WEST ZONE
CALCORD	15	MEDICAL	156.0750N	T6 - 156.7	156.0750N	T6 - 156.7	
AIRGUARD	16	AIRGUARD	168.6250	000.0	168.6250	T1 - 110.9	EMERGENCY ONLY

9. Prepared by: Name: R. Villarino RESL Signature:

ICS 204 Date/Time: 9/3/2021 2200 Personnel Count: 69

NIMS IAP

CONTROLLED UNCLASSIFIED INFORMATION/BASIC

ASSIGNMENT LIST (ICS 204 WF)

CONTROLLED UNCLASSIFIED
INFORMATION//BASIC

1. Incident Name: DIXIE WEST ZONE	2. Operational Period: Date From: 09/04/21 Date To: 09/05/21 Time From: 0700 Time To: 0700	3. Branch Group 16 Lassen Cont.
----------------------------------------------------	---------------------------------------------------------------------------------------------------------------	--------------------------------------------------------------------

Page 1 of 3

4. Operations Personnel:	
Operations Section Chief: M. Wink	Night Ops: M. Jonsson
Branch Director: M. Petro	Branch Safety: Thomas (Day), Boston (T), Newton (T)
Division/Group Supervisor: J. Pangburn	Air Branch: M. Hill

5. Resources Assigned:	** Resources Below in Bold are 12 Hour **						
Resource Identifier	ALS	LWD	Leader	Personnel	Request #	Hours	Reporting Location
ENG6 AZPVT 2215		9/8	MCGRAW, JERRY	4	E-21098	0700-1900	DP 146
ENG6 PVT E641			HINNERS, MATT	6	E-21100	0700-1900	DP 146
DOZ PVT E-590			MARANA, LUCAS	2	E-590	0700-0700	DP 146
DOZ PVT E-595			WATERMAN, TIM	2	E-595	0700-0700	DP 146
DOZ PVT E-696			HOLMS, DEE	4	E-696	0700-0700	DP 146
DOZ PVT E-709			TAYLOR, JUAN	2	E-709	0700-0700	DP 146
DOZ PVT E-821 (12hr)			CRUNKILPON, LARRY	1, 2	E-821	0700-0700 / 1900	DP 146
DOZ PVT E-981			RAMIREZ, ERAN	2	E-981	0700-0700	DP 146
DOZ PVT E-988			GILL, LEVI	2	E-988	0700-0700	DP 146
DOZ PVT E-1020			WALKER, BRISTEN	2	E-1020	0700-0700	DP 146
DOZ PVT E-1076			HUMPHREY, KEVIN	2	E-1076	0700-0700	DP 146
DOZ PVT E-1077			SHERICK, JEFF	2	E-1077	0700-0700	DP 146
DOZ PVT E-1081			DONALDSON, JUSTIN	2	E-1081	0700-0700	DP 146
DOZ PVT E-1084			HARVEY, WILLIAM	2	E-1084	0700-0700	DP 146
DOZ PVT E-1085 → DIV R			WEBSTER, JON	2	E-1085	0700-0700	DP 146
DOZ						0700-0700	DP 146
W/T PVT E-1062			BROWN, DAVE	2	E-1062	0700-0700	DP 146
W/T PVT E-1064 no show			LANG, HAROLD	2	E-1064	0700-0700	DP 146

6. Work Assignments:
 Fall hazard trees and trees that will threaten control lines.
 Prepare indirect control line and prepare for possible firing operations.

7. Special Instructions: **EMPF Dmytriw and EMPF Elkins on a 24 hour shift.**
 Construct contingency lines as directed by the Group Supervisor.
 Patrol the entire Division for spot fires over identified control lines.

8. Communications							
Name	Ch	Function	Rx Freq	Rx Tone	Tx Freq	Tx Tone	Notes
NIFC C95	B.5	COMMAND	170.1750	000.0	165.5750	T2 - 123.0	WESTWOOD. ALL REPEATERS LINK BACK TO ICP.
VFIRE 23	8	TACTICAL	154.2950N	T6 - 156.7	154.2950N	T6 - 156.7	
CDF T18	14	A/G TACTICAL	159.3450	T16 - 192.8	159.3450	T16 - 192.8	A/G TACTICAL- WEST ZONE
CALCORD	15	MEDICAL	156.0750N	T6 - 156.7	156.0750N	T6 - 156.7	
AIRGUARD	16	AIRGUARD	168.6250	000.0	168.6250	T1 - 110.9	EMERGENCY ONLY

9. Prepared by: Name:	R. Villarino	RESL	
ICS 204	Date/Time: 9/3/2021	2200	Signature:
			Personnel Count: 42

NIMS IAP

CONTROLLED UNCLASSIFIED INFORMATION//BASIC

ASSIGNMENT LIST (ICS 204 WF)

CONTROLLED UNCLASSIFIED
INFORMATION/BASIC

1. Incident Name: DIXIE WEST ZONE	2. Operational Period: Date From: 09/04/21 Date To: 09/05/21 Time From: 0700 Time To: 0700	3. Branch Group 16 Lassen Cont.
----------------------------------------------------	---------------------------------------------------------------------------------------------------------------	------------------------------------------------------------------------------------------------

Page 2 of 3

4. Operations Personnel:	
Operations Section Chief: M. Wink	Night Ops: M. Jonsson
Branch Director: M. Petro	Branch Safety: Thomas (Day), Boston (T), Newton (T)
Division/Group Supervisor: J. Pangburn	Air Branch: M. Hill

5. Resources Assigned:		** Resources Below in Bold are 12 Hour **					
Resource Identifier	ALS	LWD	Leader	Personnel	Request #	Hours	Reporting Location
W/T PVT E-1265			MARYMEE, JACK	2	E-1265	0700-1900	DP 146
W/T PVT E-1387			OWENS, JIM	2	E-1387	0700-0700	DP 146
W/T PVT E-1390			KEYLON, DON	1	E-1390	0700-1900	DP 146
W/T PVT E-1392			HUNT, JACK	2	E-1392	0700-1900	DP 146
MAS PVT E-241			HOLT, KELLY	1	E-241	0700-1900	DP 146
MAS PVT E-278			HOFFMAN, NATHAN	1	E-278	0700-1900	DP 146
MAS PVT E-314			CROOK, RUSSELL	1	E-314	0700-1900	DP 146
MAS PVT E-320			BRAUN, RYAN	1	E-320	0700-1900	DP 146
MAS PVT E-2102			GILBERT, ALEX	2	E-2102	0700-1900	DP 146
EXC PVT E-2001 <i>Div Staff</i>			BERTALON, NICK	1	E-2001	0700-1900	DP 146
EXC						0700-1900	DP 146
GRD PVT E-2169 <i>→ Staging</i>			HALL, MICHAEL	1	E-2169	0700-1900	DP 146
FEL PVT E-1116			SMITH, SHELDON	1	E-1116	0700-1900	DP 146
FEL PVT E-1117 <i>no show</i>			TAYLOR, WES		E-1117	0700-1900	DP 146
SKD PVT E-513			CAMPBELL, MARK	1	E-513	0700-1900	DP 146
SKD PVT E-1133			TAYLOR, WES	1	E-1133	0700-1900	DP 146
HEQB MOORE (T)			MOORE, TIMOTHY R <i>JOE</i>	1	O-69 <i>H64</i>	0700-0700	DP 146
HEQB						0700-0700	DP 146

6. Work Assignments: ~~GRD E-1177~~ ~~GRD E-1903~~ *GRD E-1177 ← Shasta Cont.*
GRD E-1903 ← Staging
 Fall hazard trees and trees that will threaten control lines.
 Prepare indirect control line and prepare for possible firing operations.

7. Special Instructions: **EMPF Dmytriw and EMPF Elkins on a 24 hour shift.**
 Construct contingency lines as directed by the Group Supervisor.
 Patrol the entire Division for spot fires over identified control lines.

8. Communications							
Name	Ch	Function	Rx Freq	Rx Tone	Tx Freq	Tx Tone	Notes
NIFC C95	B.5	COMMAND	170.1750	000.0	165.5750	T2 - 123.0	WESTWOOD. ALL REPEATERS LINK BACK TO ICR.
VFIRE 23	8	TACTICAL	154.2950N	T6 - 156.7	154.2950N	T6 - 156.7	
CDF T18	14	A/G TACTICAL	159.3450	T16 - 192.8	159.3450	T16 - 192.8	A/G TACTICAL- WEST ZONE
CALCORD	15	MEDICAL	156.0750N	T6 - 156.7	156.0750N	T6 - 156.7	
AIRGUARD	16	AIRGUARD	168.6250	000.0	168.6250	T1 - 110.9	EMERGENCY ONLY

9. Prepared by: Name: R. Villarino		RESL	Signature:
ICS 204	Date/Time: 9/3/2021 2200	Personnel Count: 19	

CONTROLLED UNCLASSIFIED INFORMATION/BASIC

ASSIGNMENT LIST (ICS 204 WF)

CONTROLLED UNCLASSIFIED
INFORMATION//BASIC

1. Incident Name: DIXIE WEST ZONE	2. Operational Period: Date From: 09/04/21 Date To: 09/05/21 Time From: 0700 Time To: 0700	3. Branch Group Westwood
----------------------------------------------------	---------------------------------------------------------------------------------------------------------------	------------------------------------------------------

4. Operations Personnel:		Page 1 of 1
Operations Section Chief: M. Wink	Night Ops: M. Jonsson	
Branch Director: M. Petro	Branch Safety:	
Division/Group Supervisor: H. Lawler (T/F XSD 6442)	Air Branch: M. Hill	

5. Resources Assigned:		** Resources Below in Bold are 12 Hour **					
Resource Identifier	ALS	LWD	Leader	Personnel	Request #	Hours	Reporting Location
ENG PVT OUTBACK E-1024			BEAL, JOHN	3	E-1024	0700-1900	DP 266
ENG SD PVT E-1344			CHRISTENSEN, LANCE	3	E-1344	0700-1900	DP 266
ENG3 TEXAS FIRE 34			EARNIE	3	E-20337	0700-1900	DP 266
ENG IDPVT 15			OLVADA, ANTHONY	3	E-1025	0700-1900	DP 266
ENG4 PVT 9614			THOMAS, TARYN	3	E-21180	0700-1900	DP 266
ENG6 BRS 673			GIBBONS, JASON	3	E-21175	0700-1900	DP 266
ENG6 FLPVT 2495			CATES, JEREMIAH	3	E-21178	0700-1900	DP 266
ENG6 TIMBERLINE E11			POINDEXTER, BRIAN	3	E-21181	0700-1900	DP 266
T/F XSD 6442			LAWLER, HUMBERTO	23	E-1104	0700-0700	DP 266
W/T WAC 7531 <i>no show</i>			BORNHORST, DALE	2	E-21234	0700-0700	DP 266
W/T MRA 310			CONSYLMAN, STEVEN	2	E-2064	0700-0700	DP 266
W/T PVT E-716			ROMO, GABRIEL	2	E-716	0700-0700	DP 266
W/T PVT E-722			KUSALICH, NATHAN	2	E-722	0700-0700	DP 266
W/T PVT E-963			LANSDALE, JASON	2	E-963	0700-0700	DP 266
W/T PVT E-1053			SANTANA, RICHARD	2	E-1053	0700-0700	DP 266
W/T PVT E-1364			CASE, EDWARD	1	E-1364	0700-1900	DP 266
W/T PVT E-1378			GRANT, HANNA	1	E-1378	0700-1900	DP 266

6. Work Assignments:
Mop up 300' in from control line.
Fall hazard trees and trees that will threaten control lines.
Hold fire within established control lines.

7. Special Instructions:

8. Communications							
Name	Ch	Function	Rx Freq	Rx Tone	Tx Freq	Tx Tone	Notes
NIFC C95	B.5	COMMAND	170.1750	000.0	165.5750	T2 - 123.0	WESTWOOD. ALL REPEATERS LINK BACK TO ICP.
VFIRE 22	7	TACTICAL	154.2650N	T6 - 156.7	154.2650N	T6 - 156.7	WESTWOOD/LASSEN. FSR
CDF T18	14	A/G TACTICAL	159.3450	T16 - 192.8	159.3450	T16 - 192.8	A/G TACTICAL- WEST ZONE
CALCORD	15	MEDICAL	156.0750N	T6 - 156.7	156.0750N	T6 - 156.7	
AIRGUARD	16	AIRGUARD	168.6250	000.0	168.6250	T1 - 110.9	EMERGENCY ONLY

9. Prepared by: Name: R. Villarino		RESL	Signature:
ICS 204	Date/Time: 9/3/2021 2200	Personnel Count: 61	

ASSIGNMENT LIST (ICS 204 WF)

CONTROLLED UNCLASSIFIED
INFORMATION//BASIC

1. Incident Name: DIXIE WEST ZONE	2. Operational Period: Date From: 09/04/21 Date To: 09/05/21 Time From: 0700 Time To: 0700	3. Branch Group Janesville Milford
4. Operations Personnel:		Page 1 of 2

Operations Section Chief: M. Wink	Night Ops: M. Jonsson
Branch Director: P. Beninhoven	Branch Safety: Gee (T), Clement (T)
Division/Group Supervisor: W. Darnall (STC LMU 9222C)	Air Attack:

5. Resources Assigned:		** Resources Below in Bold are 12 Hour **					
Resource Identifier	ALS	LWD	Leader	Personnel	Request #	Hours	Reporting Location
STA LAC 1103A	X		INFANTE, FRANK	22	E-477	0700-0700	DP 602
STC LMU 9222C			DARNALL, WILLIAM K	16	E-1097	0700-0700	DP 602
STC						0700-0700	DP 602
ENG3 AFV 343			CULVER, VINCENT	4	E-1347	0700-0700	DP 602
ENG3 LVN 763		<i>Kevin Wilton</i>	THOMPSON, CORY	4	E-1348	0700-0700	DP 602
STF						0700-0700	DP 602
STF						0700-0700	DP 602
STG						0700-0700	DP 602
STG <i>94446 ← Junction</i>						0700-0700	DP 602
STL SLU 9322L			MANFRED, BRENT	9	E-2160	0700-0700	DP 602
DOZ HUU 1240			PAUL, RICHARD	1	E-966	0700-0700	DP 602
DOZ PVT E-618			DUNLAP, DAVID	2	E-618	0700-0700	DP 602
DOZ PVT E-977			DUNLAP, JIM	2	E-977	0700-0700	DP 602
DOZ PVT E-1299			PONCIA, CHRIS	2	E-1299	0700-0700	DP 602
DOZ PVT E-1301			KIRKLAND, SHANE	2	E-1301	0700-0700	DP 602
DOZ PVT E-1399			TUFTS, JUSTIN	2	E-1399	0700-0700	DP 602
DOZ PVT E-1408			JOHNSON, CHAD	2	E-1408	0700-0700	DP 602
DOZ PVT E-1931			KITCHENS, RYAN	2	E-1931	0700-0700	DP 602

6. Work Assignments:
 Hold and improve control lines.
 Prepare to construct secondary control lines.
 Fall hazard trees and trees that will threaten control lines.

7. Special Instructions:

8. Communications

Name	Ch	Function	Rx Freq	Rx Tone	Tx Freq	Tx Tone	Notes
NIFC C56	B.2	COMMAND	172.3500	000.0	163.0375	T2 - 123.0	THOMPSON PK. ALL REPEATERS LINK BACK TO ICP.
NIFC T1	12	TACTICAL	168.0500N	T2 - 123.0	168.0500N	T2 - 123.0	
CDF T18	14	A/G TACTICAL	159.3450	T16 - 192.8	159.3450	T16 - 192.8	A/G TACTICAL- WEST ZONE
CALCORD	15	MEDICAL	156.0750N	T6 - 156.7	156.0750N	T6 - 156.7	
AIRGUARD	16	AIRGUARD	168.6250	000.0	168.6250	T1 - 110.9	EMERGENCY ONLY

9. Prepared by: Name: R. Villarino RESL

Signature:

ICS 204 Date/Time: 9/3/2021 2200 Personnel Count: 70

ASSIGNMENT LIST (ICS 204 WF)

CONTROLLED UNCLASSIFIED
INFORMATION//BASIC

1. Incident Name: DIXIE WEST ZONE	2. Operational Period: Date From: 09/04/21 Date To: 09/05/21 Time From: 0700 Time To: 0700	3. Branch Group Janesville Milford
4. Operations Personnel:		Page 2 of 3

Operations Section Chief: M. Wink	Night Ops: M. Jonsson
Branch Director: P. Beninhoven	Branch Safety: Gee (T), Clement (T)
Division/Group Supervisor: W. Darnall (STC LMU 9222C)	Air Attack:

5. Resources Assigned:		** Resources Below in Bold are 12 Hour **					
Resource Identifier	ALS	LWD	Leader	Personnel	Request #	Hours	Reporting Location
DOZ PVT E-1936			JONES, KEN	2	E-1936	0700-0700	DP 602
DOZ PVT E-2032			ROBERTSON, JUSTIN	2	E-2032	0700-0700	DP 602
DOZ PVT E-2075			DEPUE, JARED	2	E-2075	0700-0700	DP 602
DOZ PVT E-2083			TAYLOR, DWAYNE	2	E-2083	0700-0700	DP 602
DOZ PVT E-2084			LANDER, STEVEN	2	E-2084	0700-0700	DP 602
W/T JNV 432 <i>no show</i>						0700-1900	DP 602
W/T MLF 1733 <i>no show</i>			MARSH, BILL	2	E-1750	0700-1900	DP 602
W/T SAD 1931			GRAVES, MIKE	1	E-1720	0700-0700	DP 602
W/T PVT E-49			ALEXANDER, LUKE	2	E-49	0700-0700	DP 602
W/T PVT E-508			AGUILAR, NICK	2	E-508	0700-1900	DP 602
W/T PVT E-866			ALEXANDER, JIMMY	2	E-866	0700-0700	DP 602
W/T PVT E-869			VANDWARKER, AARON	2	E-869	0700-0700	DP 602
W/T PVT E-1893			CIANDRO, CHRIS	1	E-1893	0700-1900	DP 602
W/T PVT E-1898			PEIXOTO, SUMMER	2	E-1898	0700-0700	DP 602
W/T PVT E-1899			PAILON, STEVE	1	E-1899	0700-1900	DP 602
W/T PVT E-1900			SWENSON, GALE	1	E-1900	0700-1900	DP 602
FEL PVT E-1223			STRONG, STEVEN	2	E-1223	0700-1900	DP 602
FEL PVT E-1118			ACUNA, EDDIE	1	E-1118	0700-1900	DP 602

6. Work Assignments:
 Hold and improve control lines.
 Prepare to construct secondary control lines.
 Fall hazard trees and trees that will threaten control lines.

7. Special Instructions:

8. Communications							
Name	Ch	Function	Rx Freq	Rx Tone	Tx Freq	Tx Tone	Notes
NIFC C56	B.2	COMMAND	172.3500	000.0	163.0375	T2 - 123.0	THOMPSON PK. ALL REPEATERS LINK BACK TO ICP.
NIFC T1	12	TACTICAL	168.0500N	T2 - 123.0	168.0500N	T2 - 123.0	
CDF T18	14	A/G TACTICAL	159.3450	T16 - 192.8	159.3450	T16 - 192.8	A/G TACTICAL - WEST ZONE
CALCORD	15	MEDICAL	156.0750N	T6 - 156.7	156.0750N	T6 - 156.7	
AIRGUARD	16	AIRGUARD	168.6250	000.0	168.6250	T1 - 110.9	EMERGENCY ONLY

9. Prepared by: Name: R. Villarino RESL Signature:

ICS 204 Date/Time: 9/3/2021 2200 Personnel Count: 29

NIMS IAP

CONTROLLED UNCLASSIFIED INFORMATION//BASIC

ASSIGNMENT LIST (ICS 204 WF)

CONTROLLED UNCLASSIFIED
INFORMATION/BASIC

1. Incident Name: DIXIE WEST ZONE	2. Operational Period: Date From: 09/04/21 Date To: 09/05/21 Time From: 0700 Time To: 0700	3. Branch Group Janesville Antelope
4. Operations Personnel: Operations Section Chief: M. Wink Branch Director: P. Beninhoven Division/Group Supervisor: S. Sanchez (STC SBC 9322C)		Page 1 of 2 Night Ops: M. Jonsson Branch Safety: Gee (T), Clement (T) Air Branch: M. Hill

5. Resources Assigned: <i>Himmeltrick</i>	** Resources Below in Bold are 12 Hour **
--------------------------------------------------	--------------------------------------------------

Resource Identifier	ALS	LWD	Leader	Personnel	Request #	Hours	Reporting Location
STC SBC 9322C	X		SANCHEZ, SERGIO	<i>1720</i>	E-1175	0700-0700	DP 282
STC			<i>Thomas Himmeltrick</i>			0700-0700	DP 282
STG						0700-0700	DP 282
CRW MEU CCR6 (CF) <i>to Junction</i>			GUTIERREZ, GREGORY	15	C-214	0700-0700	DP 282
CRW						0700-0700	DP 282
CRW						0700-0700	DP 282
DOZ SCU 1641			POTTER, DEAN	4	E-128	0700-0700	DP 282
DOZ PVT E-612 <i>to Junction</i>			PEARSON, LEMUEL	1	E-612	0700-0700	DP 282
W/T PVT E-867			THOENE, JAKE	2	E-867	0700-1900	DP 282
W/T PVT E-961			BUCHER, SHAWN	2	E-961	0700-0700	DP 282
W/T PVT E-1060			SANTOS, TED	2	E-1060	0700-0700	DP 282
W/T PVT E-1061			HURL, DENNIS	2	E-1061	0700-0700	DP 282
W/T PVT E-1069			MASON, LUKE	1	E-1069	0700-1900	DP 282
W/T PVT E-1368			LOWE, BOB	2	E-1368	0700-0700	DP 282
GRD PVT E-1959			TWISSELMAN, JAKE	1	E-1959	0700-1900	DP 282
GRD						0700-1900	DP 282
SKD PVT E-1130			MOOSIOS, LOUIS	1	E-1130	0700-1900	DP 282
SKD						0700-1900	DP 282

6. Work Assignments:
Mop up 300' in from control line.
Construct contingency lines from Road 02 to the 2020 Sheep burn directly as possible.
Fall hazard trees and trees that will threaten control lines.

7. Special Instructions:

8. Communications

Name	Ch	Function	Rx Freq	Rx Tone	Tx Freq	Tx Tone	Notes
NIFC C56	B.2	COMMAND	172.3500	000.0	163.0375	T2 - 123.0	THOMPSON PK. ALL REPEATERS LINK BACK TO ICP.
VFIRE 23	8	TACTICAL	154.2950N	T6 - 156.7	154.2950N	T6 - 156.7	ANTELOPE GRP, LASSEN CO
CDF T18	14	A/G TACTICAL	159.3450	T16 - 192.8	159.3450	T16 - 192.8	A/G TACTICAL- WEST ZONE
CALCORD	15	MEDICAL	156.0750N	T6 - 156.7	156.0750N	T6 - 156.7	
AIRGUARD	16	AIRGUARD	168.6250	000.0	168.6250	T1 - 110.9	EMERGENCY ONLY

9. Prepared by: Name:	R. Villarino	RESL	
ICS 204	Date/Time: 9/3/2021 2200	Signature:	Personnel Count: 50

ASSIGNMENT LIST (ICS 204 WF)

CONTROLLED UNCLASSIFIED
INFORMATION/BASIC

1. Incident Name: DIXIE WEST ZONE	2. Operational Period: Date From: 09/04/21 Date To: 09/05/21 Time From: 0700 Time To: 0700	3. Branch Group Janesville Junction
----------------------------------------------------	---------------------------------------------------------------------------------------------------------------	----------------------------------------------------------------

4. Operations Personnel:		Page 1 of 2
Operations Section Chief: M. Wink	Night Ops: M. Jonsson	
Branch Director: P. Beninhoven	Branch Safety: Gee (T), Clement (T)	
Division/Group Supervisor: H. Niederberger, R. Rushing (T)	Air Branch: M. Hill	

5. Resources Assigned:		** Resources Below in Bold are 12 Hour **					
Resource Identifier	ALS	LWD	Leader	Personnel	Request #	Hours	Reporting Location
STA LAC 1120A	X		PRYOR, WILLIAM	24 22	E-946	0700-0700	HONEY MX TRACK
STA			<i>Gerald Gonzalez</i>			0700-0700	HONEY MX TRACK
STC						0700-0700	HONEY MX TRACK
STC						0700-0700	HONEY MX TRACK
STC						0700-0700	HONEY MX TRACK
ENG GIO 231			YUNGKANS, JEFF	4	E-1342	0700-1900	HONEY MX TRACK
STF OES 2861F	X		MARRA, BEN	19	E-1100	0700-0700	HONEY MX TRACK
STG ICU 9444G (CDCR) <i>to Milford</i>			BISHOP, JAMES	33	C-13	0700-0700	HONEY MX TRACK
CRW						0700-0700	HONEY MX TRACK
CRW						0700-0700	HONEY MX TRACK
DOZ CZU 1741			PYORRE, SEAN	2	E-741	0700-0700	HONEY MX TRACK
DOZ PVT E-985			MAJOR, JOSHUAH	2	E-985	0700-0700	HONEY MX TRACK
DOZ PVT E-1075			DAVIS, PAYTON	2	E-1075	0700-0700	HONEY MX TRACK
DOZ PVT E-1420			SIMPSON, JOHN	2	E-1420	0700-0700	HONEY MX TRACK
DOZ PVT E-1934			LYNCH, MARTY	2	E-1934	0700-0700	HONEY MX TRACK
W/T PVT E-452			SPERBECK, BILL	2	E-452	0700-0700	HONEY MX TRACK
W/T PVT E-640			HASTINGS, SCOTT	1	E-640	0700-1900	HONEY MX TRACK
W/T PVT E-1070			WILLIAMS, TIM	2	E-1070	0700-0700	HONEY MX TRACK

6. Work Assignments: *CRW MELG C-214 ← Antelope*
 Hold and improve control lines. *DOZ E-612 ← Junction*
 Construct control lines as direct as possible.
 Implement progressive hose lays as needed.
 Hold fire within established control lines.

7. Special Instructions:

8. Communications							
Name	Ch	Function	Rx Freq	Rx Tone	Tx Freq	Tx Tone	Notes
NIFC C91	B.4	COMMAND	173.9750	000.0	165.4625	T2 - 123.0	SHAFFER MTN. ALL REPEATERS LINK BACK TO ICP.
VFIRE 24	9	TACTICAL	154.2725N	T6 - 156.7	154.2725N	T6 - 156.7	JUNCTION GROUP
CDF T18	14	A/G TACTICAL	159.3450	T16 - 192.8	159.3450	T16 - 192.8	A/G TACTICAL - WEST ZONE
CALCORD	15	MEDICAL	156.0750N	T6 - 156.7	156.0750N	T6 - 156.7	
AIRGUARD	16	AIRGUARD	168.6250	000.0	168.6250	T1 - 110.9	EMERGENCY ONLY

9. Prepared by: Name: R. Villarino		RESL
Signature:		Personnel Count: 95
ICS 204	Date/Time: 9/3/2021 2200	

CONTROLLED UNCLASSIFIED INFORMATION/BASIC

ASSIGNMENT LIST (ICS 204 WF)

CONTROLLED UNCLASSIFIED
INFORMATION//BASIC

1. Incident Name: DIXIE WEST ZONE	2. Operational Period: Date From: 09/04/21 Date To: 09/05/21 Time From: 0700 Time To: 0700	3. Branch Group Janesville Junction
4. Operations Personnel:		Page 2 of 2

Operations Section Chief: M. Wink	Night Ops: M. Jonsson
Branch Director: P. Beninoven	Branch Safety: Gee (T), Clement (T)
Division/Group Supervisor: H. Niederberger, R. Rushing (T)	Air Branch: M. Hill

5. Resources Assigned:		** Resources Below in Bold are 12 Hour **					
Resource Identifier	ALS	LWD	Leader	Personnel	Request #	Hours	Reporting Location
W/T PVT E-1379			WILSON, VANCOIS	3	E-1379	0700-0700	HONEY MX TRACK
W/T PVT E-1398			FORESTER, HUGH	2	E-1398	0700-0700	HONEY MX TRACK
W/T PVT E-1897			MCLANE, BILL	2	E-1897	0700-0700	HONEY MX TRACK
W/T PVT E-1997			KOLLENBORN, JIM	1	E-1997	0700-1900	HONEY MX TRACK
W/T PVT E-2070 <i>no show</i>			GASSAWAY, NORMAN	2	E-2070	0700-0700	HONEY MX TRACK
W/T PVT E-2072 <i>no show</i>			BATES, JEFF	1	E-2072	0700-1900	HONEY MX TRACK
EXC PVT E-2112			FREEMAN, SHANE	1	E-2112	0700-1900	HONEY MX TRACK
EXC PVT E-2113 → <i>Lassen FSR</i>			MCCLOUD, MIKE	1		0700-1900	HONEY MX TRACK
EXC PVT E-2114			ROGERS, JAMES	1		0700-1900	HONEY MX TRACK
HEQB SIMMS			SIMMS, COLBY	1	O-1220	0700-1900	HONEY MX TRACK
FALM PVT O-660 → <i>DIV J/K</i>			MCCONNELL, ROBERT	2	O-660	0700-1900	HONEY MX TRACK
FALM PVT O-937			SAUCEDA, IANTHOMAS	2	O-937	0700-1900	HONEY MX TRACK
FALM PVT O-1597 → <i>Demob</i>			LAAN, JAMES	2	O-1597	0700-1900	HONEY MX TRACK
EXC E-1908 ← <i>Lassen FSR</i>							
DOZ LNU 1443 (was unass)							
DOZ E-612 ← <i>Antelope</i>							
DOZ E-589 ← <i>FSR (Butte)</i>							

6. Work Assignments: *DOZ E-1402 (was unass)*
 Hold and improve control lines. *E-1419*
 Construct control lines as direct as possible. *E-1432*
 Implement progressive hose lays as needed. *E-1078*
 Hold fire within established control lines. *E-1432* ↓

7. Special Instructions: *E-1432*

8. Communications							
Name	Ch	Function	Rx Freq	Rx Tone	Tx Freq	Tx Tone	Notes
NIFC C91	B.4	COMMAND	173.9750	000.0	165.4625	T2 - 123.0	SHAFFER MTN. ALL REPEATERS LINK BACK TO ICP.
VFIRE 24	9	TACTICAL	154.2725N	T6 - 156.7	154.2725N	T6 - 156.7	JUNCTION GROUP
CDF T18	14	A/G TACTICAL	159.3450	T16 - 192.8	159.3450	T16 - 192.8	A/G TACTICAL- WEST ZONE
CALCORD	15	MEDICAL	156.0750N	T6 - 156.7	156.0750N	T6 - 156.7	
AIRGUARD	16	AIRGUARD	168.6250	000.0	168.6250	T1 - 110.9	EMERGENCY ONLY

9. Prepared by: Name: R. Villarino	RESL	Signature:
-------------------------------------------	------	------------

CONTROLLED UNCLASSIFIED INFORMATION//BASIC

ASSIGNMENT LIST (ICS 204 WF)

CONTROLLED UNCLASSIFIED
INFORMATION/BASIC

1. Incident Name: DIXIE WEST ZONE	2. Operational Period: Date From: 09/04/21 Date To: 09/05/21 Time From: 0700 Time To: 0700	3. Branch Division FSR Lassen FSR
4. Operations Personnel:		Page 1 of 2

Operations Section Chief: M. Wink	Night Ops: M. Jonsson
Branch Director:	Branch Safety:
Division/Group Supervisor: I. Houser (Day)	Air Branch: M. Hill

5. Resources Assigned:		** Resources Below in Bold are 12 Hour **					
Resource Identifier	ALS	LWD	Leader	Personnel	Request #	Hours	Reporting Location
DOZ PVT E-599			TRESSLER, ARTIE	2	E-599	0700-1900	SUSANVILLE ICP
DOZ PVT E-695			VARIAN, GREG	1	E-695	0700-1900	SUSANVILLE ICP
DOZ PVT E-975			CARLTON, RODNEY	1	E-975	0700-1900	SUSANVILLE ICP
DOZ PVT E-976			MONTZ, JOHN	2	E-976	0700-1900	SUSANVILLE ICP
DOZ PVT E-987			MONTI, WEST	2	E-987	0700-1900	SUSANVILLE ICP
DOZ PVT E-1932			COOK, KENNETH	1	E-1932	0700-1900	SUSANVILLE ICP
MAS BTU 2149			WRIGHT, JONATHAN	1	E-1775	0700-1900	SUSANVILLE ICP
MAS PVT E-122			KATZ, MIKE	1	E-122	0700-1900	SUSANVILLE ICP
MAS PVT E-123			FUNES, TOM	1	E-123	0700-1900	SUSANVILLE ICP
MAS PVT E-322			NUMMELY, CHAD	1	E-322	0700-1900	SUSANVILLE ICP
MAS PVT E-329			WARNER, GARY	1	E-329	0700-1900	SUSANVILLE ICP
MAS PVT E-780			JOHNSON, JON	1	E-780	0700-1900	SUSANVILLE ICP
EXC PVT E-225			FUNES, TOMMY	1	E-225	0700-1900	SUSANVILLE ICP
EXC PVT E-778			MOORE, DILLON	1	E-778	0700-1900	SUSANVILLE ICP
EXC PVT E-1905			TAYLOR, ROD	1	E-1905	0700-1900	SUSANVILLE ICP
EXC PVT E-1906			OLIVER, KEVIN	1	E-1906	0700-1900	SUSANVILLE ICP
EXC PVT E-1908 → Junction			MADDOX, JARED	1	E-1908	0700-1900	SUSANVILLE ICP
EXC PVT E-1909			BENSON, LANE	1	E-1909	0700-1900	SUSANVILLE ICP

6. Work Assignments:
 Identify suppression repair needs.
 Implement fire suppression repair plan.
 Identify and document suppression repair needs.

7. Special Instructions:

8. Communications							
Name	Ch	Function	Rx Freq	Rx Tone	Tx Freq	Tx Tone	Notes
NIFC C95	B.5	COMMAND	170.1750	000.0	165.5750	T2 - 123.0	WESTWOOD. ALL REPEATERS LINK BACK TO ICP.
VFIRE 22	7	TACTICAL	154.2650N	T6 - 156.7	154.2650N	T6 - 156.7	WESTWOOD/LASSEN. FSR
CDF T18	14	A/G TACTICAL	159.3450	T16 - 192.8	159.3450	T16 - 192.8	A/G TACTICAL - WEST ZONE
CALCORD	15	MEDICAL	156.0750N	T6 - 156.7	156.0750N	T6 - 156.7	
AIRGUARD	16	AIRGUARD	168.6250	000.0	168.6250	T1 - 110.9	EMERGENCY ONLY

9. Prepared by: Name:	R. Villarino	RESL	Signature:
ICS 204	Date/Time: 9/3/2021	2200	Personnel Count: 21

ASSIGNMENT LIST (ICS 204 WF)

CONTROLLED UNCLASSIFIED
INFORMATION//BASIC

1. Incident Name: DIXIE WEST ZONE	2. Operational Period: Date From: 09/04/21 Date To: 09/05/21 Time From: 0700 Time To: 0700	3. Branch Division FSR Lassen FSR
4. Operations Personnel:		Page 2 of 2

Operations Section Chief: M. Wink	Night Ops: M. Jonsson
Branch Director:	Branch Safety:
Division/Group Supervisor: I. Houser (Day)	Air Branch: M. Hill

5. Resources Assigned:							
** Resources Below in Bold are 12 Hour **							
Resource Identifier	ALS	LWD	Leader	Personnel	Request #	Hours	Reporting Location
EXC PVT E-1910			HALL, MICHAEL	1	E-1910	0700-1900	SUSANVILLE ICP
EXC PVT E-1971			WARNER, PAUL	1	E-1971	0700-1900	SUSANVILLE ICP
EXC PVT E-1972			BRITTEN, BEN	1	E-1972	0700-1900	SUSANVILLE ICP
EXC PVT E-2110			PARMAN, GLENN	1	E-2110	0700-1900	SUSANVILLE ICP
SKD PVT E-1128			EVANS, SHANE	1	E-1128	0700-1900	SUSANVILLE ICP
SKD PVT E-1132			CRUCE, DAVID	2	E-1132	0700-1900	SUSANVILLE ICP
CHIP PVT E-1267			GLENN, PARMAN	2	E-1267	0700-1900	SUSANVILLE ICP
CHIP PVT E-1356			WILKINS, DONNIE	1	E-1356	0700-1900	SUSANVILLE ICP
FSRS MCNICHOLAS			MCNICHOLAS, M.	1		0700-1900	SUSANVILLE ICP
FSRS DYSTHE Demob				1		0700-1900	SUSANVILLE ICP
FSRS RAVENSCROFT			RAVENSCROFT, JEREMY	1	O-1897	0700-1900	SUSANVILLE ICP
<i>EXC E-2113 ← Junction</i>							

6. Work Assignments:
 Identify suppression repair needs.
 Implement fire suppression repair plan.
 Identify and document suppression repair needs.

7. Special Instructions:

8. Communications							
Name	Ch	Function	Rx Freq	Rx Tone	Tx Freq	Tx Tone	Notes
NIFC C95	B.5	COMMAND	170.1750	000.0	165.5750	T2 - 123.0	WESTWOOD. ALL REPEATERS LINK BACK TO ICP.
VFIRE 22	7	TACTICAL	154.2650N	T6 - 156.7	154.2650N	T6 - 156.7	WESTWOOD/LASSEN. FSR
CDF T18	14	A/G TACTICAL	159.3450	T16 - 192.8	159.3450	T16 - 192.8	A/G TACTICAL- WEST ZONE
CALCORD	15	MEDICAL	156.0750N	T6 - 156.7	156.0750N	T6 - 156.7	
AIRGUARD	16	AIRGUARD	168.6250	000.0	168.6250	T1 - 110.9	EMERGENCY ONLY

9. Prepared by: Name: R. Villarino RESL

Signature:

ICS 204 Date/Time: 9/3/2021 2200 Personnel Count: 13

ASSIGNMENT LIST (ICS 204 WF)

CONTROLLED UNCLASSIFIED
INFORMATION//BASIC

1. Incident Name: DIXIE WEST ZONE	2. Operational Period: Date From: 09/04/21 Date To: 09/05/21 Time From: 0700 Time To: 0700	3. Branch Staging Susanville
4. Operations Personnel:		Page 1 of 2

Operations Section Chief: M. Wink	Night Ops: M. Jonsson
Branch Director:	Branch Safety:
Division/Group Supervisor:	Air Branch: M. Hill

5. Resources Assigned:	** Resources Below in Bold are 12 Hour **						
Resource Identifier	ALS	LWD	Leader	Personnel	Request #	Hours	Reporting Location
DOZ PVT E-1430			RUBINI, NATHAN	3	E-1430	0700-0700	SUSANVILLE ICP
DOZ PVT E-1938			RICKER, JOHN	1	E-1938	0700-1900	SUSANVILLE ICP
W/T PVT E-1054 → to DIV R			DUNN, BRAD	2	E-1054	0700-1900	SUSANVILLE ICP
W/T PVT E-1359			TROEDEL, BRYAN	1	E-1359	0700-1900	SUSANVILLE ICP
W/T PVT E-1369			ROGERS, BUDDY	1	E-1369	0700-1900	SUSANVILLE ICP
W/T PVT E-2066			WISE, NATE	1	E-2066	0700-1900	SUSANVILLE ICP
GDR PVT E-581 → to Milford			MASON, LUKE	1	E-581	0700-1900	SUSANVILLE ICP
GRD PVT E-1903 → to Lassen Cont.			COLEMAN, TRACY	1	E-1903	0700-1900	SUSANVILLE ICP
GRD PVT E-1955 → Milford			BROWER, JUSTIN	1	E-1955	0700-1900	SUSANVILLE ICP
GRD PVT E-1956			HOWARD, TRYSTAN	1	E-1956	0700-1900	SUSANVILLE ICP
GRD PVT E-1957 → to DIV Q			WEST, MONTE	1	E-1957	0700-1900	SUSANVILLE ICP
GRD PVT E-1958 → Milford			MUSTIN, RICK	1	E-1958	0700-1900	SUSANVILLE ICP
GRD PVT E-2168			STUGELMEYER, JOHN	1	E-2168	0700-1900	SUSANVILLE ICP
GRD E-2169 ← Lassen Cont.							
DOZ E-2076 (unass)							
W/T E-1895 ← DIV Q							
GRD E-2221 (unass)							
W/T E-2074 (unass)							

6. Work Assignments:
 DOZ E-1939 (unass)
 SKD E-2104 (Butte FSR) (unass)
 DOZ E-2078 (unass)
 W/T E-2069 (unass)

7. Special Instructions:
 W/T E-2073 (unass)

8. Communications							
Name	Ch	Function	Rx Freq	Rx Tone	Tx Freq	Tx Tone	Notes
NIFC C91	B.4	COMMAND	173.9750	000.0	165.4625	T2 - 123.0	SHAFFER MTN. ALL REPEATERS LINK BACK TO ICP.
CDF T18	14	A/G TACTICAL	159.3450	T16 - 192.8	159.3450	T16 - 192.8	A/G TACTICAL - WEST ZONE
CALCORD	15	MEDICAL	156.0750N	T6 - 156.7	156.0750N	T6 - 156.7	
AIRGUARD	16	AIRGUARD	168.6250	000.0	168.6250	T1 - 110.9	EMERGENCY ONLY

9. Prepared by: Name:	R. Villarino	RESL	Signature:
ICS 204	Date/Time: 9/3/2021 2200	Personnel Count: 16	

AIR OPERATIONS SUMMARY ICS-220

Incident Name and Incident Number		Sunrise	Startup	Cutoff	Sunset
EAST & WEST ZONES/ DIXIE 21-CABTU-009205		638	708	1904	1934
General Remarks, Safety Notes, Hazards, Air Operations Special Equipment, etc.					
TRACK ALL DIPSITE LOCATIONS / NUMBER OF DIPS / GALLONS TAKEN.					
TRACK ALL DROP LOCATIONS / NUMBER OF DROPS / GALLONS DROPPED					
ALL GPS DATA TO BE COLLECTED IN DEGREES, DECIMAL MINUTES FORMAT.					
AVOID Aerial Application of Retardant / Foam / Agent within 300' of Waterways, Bodies of Water, etc.					
If Retardant / Foam / Agent is Dropped Within These Areas Immediately Notify the AOB and Provide the Following Information: Lat / Long, Estimated Number of Gallons and a Map Detailing The Area.					
Aircraft Ordering: Command (CDF Command 1) use (T10) 107.2					
Order All Aircraft through Susanville					

Time Prepared

1800	
Shutdown	
2004	
Eagle Helibase	
40° 39.08	120° 46.06
Battle Creek Helibase	
40° 20.34'	121° 37.14'
Quincy Helibase	
39° 20.94'	121° 37.47'
Nervino Helibase	
39° 49.10	120° 21.00

Date Prepared

Friday, September 3, 2021	
Operational Period - Date	
Saturday, September 4, 2021	
WEST ZONE A-703 NOTAM: 1/0915	
Radius: Polygon	NM
Altitude: 12500'	MSL
Frequency: 125.1750	
EAST ZONE A-20229 NOTAM: 1/0944	
Radius: Polygon	NM
Altitude: 12500'	MSL
Frequency: 127.4250	
http://tfr.faa.gov/tfr2/list.html	

Prepared By

Matt Hill	
Operational Period - Time	
0700-0700	
Rescue Ship Information	
Name	Day
Phone (530) 257-5575	G841
Make/Model	Night
UH60	G841
Location	UH60
Reno INTL	UH60
Request Procedures for These Aircraft:	
Incident Communications	
See Medical Plan For Additional Info	

EAST ZONE-(EAST COMMUNICATIONS/HELIBASES)													
Frequencies	RX	Tone	TX	Tone	RX	Tone	TX	Tone	TX	Tone	AM / FM		
EAST AIR TACTICS	165.9875		165.9875		167.0625		167.0625		167.0625		FM		
AIR / AIR TFR	125.1750		125.1750		127.4250		127.4250		127.4250		AM		
EAST FIX WING BRIEFING	119.0750		119.0750		134.0250		134.0250		134.0250		AM		
WEST COMMAND	170.4500		168.1000	T2-123.0	170.4250	T3-131.8	168.0750	T3-131.8	168.0750		FM		
WEST 1 ROTOR VICTOR	128.0250		128.0250		132.2750		132.2750		132.2750		AM		
WEST 2 ROTOR VICTOR	123.7250		123.7250		126.6750		126.6750		126.6750		AM		
WEST A/G- Command	166.6000		166.6000		168.3375		168.3375		168.3375		FM		
WEST A/G - Tactical	159.3450	T16-192.8	159.3450	T16-192.8	169.1000		169.1000		169.1000		FM		
TOLC (Eagle)	120.1250		120.1250		163.1000		163.1000		163.1000		FM		
DECK (Battle Creek/Eagle)	168.3500	T2-123.0	168.3500	T2-123.0	156.0750	156.7 (6)	156.0750	156.7 (6)	156.0750	156.7 (6)	FM		
TOLC (Battle Creek)	123.0250		123.0250		168.6250		168.6250		168.6250	110.9 (1)	FM		
FAA #	Type	Make/Model	Helibase	Start	Avail	Remarks	FAA #	Type	Make/Model	Helibase	Start	Avail	Remarks
35S	I	S64E	Battle	0800	0800	Tank A-374	2WM	I	KMAX	Quincy	0800	0800	Bucket A-20032
37S	I	S64E	Battle	0800	0800	Tank A-133	562	I	KMAX	Quincy	0800	0800	Bucket A-20150
3PG	I	UH-60	Battle	0800	0800	Longline A-619	2BT (510)	II	212HP	Quincy	0800	0800	Std/Bucket A-20001
4PG	I	UH-60	Battle	0800	0800	Longline A-620	OPF (512)	II	212HP	Quincy	0800	0800	Std/Longline A-20081
2MP	I	UH-60	Battle	0800	0800	Longline A-618	553	III	Bell 407	Quincy	0800	0800	HLCO Recon A-20014
79R	I	CH54A	Battle	0800	0800	Tank A-669							
95B	I	CH54A	Battle	0800	0800	Tank A-20172	4TH	I	KMAX	Nervino	0800	0800	Bucket A-20171
22Z	II	BELL 212	Battle	0800	0800	Std/Longline A-22	2FH	I	UH60	Nervino	0800	0800	Bucket A-20149
3PD	III	AS350B3	Battle	0800	0800	HLCO Recon A-30	3AC	I	S64F	Nervino	0800	0800	Tank A-20012
4TV	III	AS350B2	Battle	0800	0800	HLCO Recon A-154	3BH	I	UH60	Nervino	0800	0800	Bucket A-20019
2KK	III	BELL 206L-1	Battle	0800	0800	HLCO Recon A-622	5TK (532)	II	Bell 205	Nervino	0800	0800	Std/Longline A-20013
61CG	I	S61N	Eagle	0800	0800	Longline A-524	7XL	III	AS350B3	Nervino	0800	0800	HLCO Recon A-20006
71CH	I	CH47	Eagle	0800	0800	Tank A-550	41HX	III	Bell 407	Nervino	0800	0800	HLCO Recon A-20140
2CH	I	CH47	Eagle	0800	0800	Tank A-373	S261	III	CL215T	Stead	0800	0800	SCOOPER A-20200
5CH	I	BV234	Eagle	0800	0800	Std/Longline A-505	S263	III	CL215T	Stead	0800	0800	SCOOPER A-20201
7CH	I	BV107-II	Eagle	0800	0800	Longline A-525							
3HL	II	212HP	Eagle	0800	0800	Std/Tank A-385	UR3A	4	M600/Alta-X	East Zone	1400	1700	UAS/EO/IR/AI
3RC	II	UH1H	Eagle	0800	0800	Limited/Tank A-688	UR41	4	M2EA	West Zone	1400	1700	UAS/EO/IR
6GM	III	BELL 206 L-4	Eagle	0800	0800	HLCO Recon A-523	UR43	4	M2EA	West Zone	1400	1700	UAS/EO
5AS	III	BELL 407	Eagle	0800	0800	HLCO Recon A-28	UR44	4	M2EA	West Zone	1400	1700	UAS/EO
22EA	III	BELL 206	Eagle	0800	0800	HLCO Recon A-469							Page 1 of 2

ICS 205 - INCIDENT RADIO COMMUNICATIONS PLAN

1. Incident Name: **DIXIE WEST ZONE**
 Date: 09/03/2021
 Time: 1930

2. Date/Time Prepared: _____
 Date: 09/04/21
 Time: 0700

3. Operational Period:
 Date From: 09/04/21
 Time From: 0700
 Date To: 09/05/21
 Time To: 0700

4. Communications		Name	Assigned To	Rx Freq	Rx Tone	Tx Freq	Tx Tone	Notes
1	COMMAND	NIFC C2	BRANCH 9 /13	170.4500	000.0	168.1000	T2 - 123.0	PEGLEG L.O. ALL REPEATERS LINKED BACK TO ICP
2	COMMAND	NIFC C10	BRANCH 9 /13	170.4125	000.0	165.9625	T2 - 123.0	DYER MTN. ALL REPEATERS LINKED BACK TO ICP
3	COMMAND	NIFC C31	BRANCH 9 /13	173.0250	000.0	163.8250	T2 - 123.0	MT LASSEN. ALL REPEATERS LINKED BACK TO ICP
4	COMMAND	NIFC C47	UNASSIGNED	172.5500	000.0	165.3875	T2 - 123.0	CURRENTLY UNASSIGNED
5	COMMAND	NIFC C57	UNASSIGNED	173.7500	000.0	167.5500	T2 - 123.0	CURRENTLY UNASSIGNED
6	COMMAND	BTU CMD	BRANCH 1/5/7 BTU FSR	154.4150	T2 - 123.0	159.0000	T4 - 136.5	USE FOR BRANCH 1/5/7 & BUTTE FSR *ONLY*
7	TACTICAL	CDF T28	A/B/C/E/F/G/I	151.1825	T16 - 192.8	151.1825	T16 - 192.8	
8	TACTICAL	CDF T29	DIV J / K	151.3475	T16 - 192.8	151.3475	T16 - 192.8	
9	TACTICAL	CDF T30	DIV L	151.3925	T16 - 192.8	151.3925	T16 - 192.8	
10	TACTICAL	CDF T31	DIV N/O / SHASTA CONT.	159.3825	T16 - 192.8	159.3825	T16 - 192.8	
11	TACTICAL	VTAC12	BUTTE FSR	154.4525	T6 - 156.7	154.4525	T6 - 156.7	
12	TACTICAL	VTAC13	DIV P	158.7375	T6 - 156.7	158.7375	T6 - 156.7	
13	A/G CMD	A/G CMD	ALL DIVS	166.6000N	000.0	166.6000N	000.0	A/G COMMAND- WEST ZONE
14	A/G TACTICAL	CDF T18	ALL DIVS	159.3450	T16 - 192.8	159.3450	T16 - 192.8	A/G TACTICAL- WEST ZONE
15	MEDICAL	CALCORD	ALL DIVS	156.0750N	T6 - 156.7	156.0750N	T6 - 156.7	
16	AIRGUARD	AIRGUARD	ALL DIVS	168.6250	000.0	168.6250	T1 - 110.9	EMERGENCY ONLY
17								
18								
19								
20	AIRGUARD	AIRGUARD	ALL DIVS	168.6250	000.0	168.6250	T1 - 110.9	EMERGENCY ONLY

5. Special Instructions

NIFC Frequencies will require the user to select Tone 2 in CALFIRE Statewide programmed radios. West Communications is located in Susanville.
 Radio Zone 51 / Group 15, DIXE B11

6. Prepared by (Communications Unit Leader): Name: **JOHN AGUILERA**
 Signature: _____
 Date/Time: 09/03/21 1930

ICS 205 - CONTROLLED UNCLASSIFIED INFORMATION/BASIC

ICS 205 - INCIDENT RADIO COMMUNICATIONS PLAN

1. Incident Name: **DIXIE WEST ZONE** 2. Date/Time Prepared: 3. Operational Period:

Date: 09/03/2021 Date From: 09/04/21 Date To: 09/05/21
 Time: 1930 Time From: 0700 Time To: 0700


Page 2 of 2

4. Communications		Name	Assigned To	Rx Freq	Rx Tone	Tx Freq	Tx Tone	Notes
1	COMMAND	NIFC C76	BRANCH 16	173.9375	000.0	163.6125	T2 - 123.0	ROOP MTN. ALL REPEATERS LINK BACK TO ICP.
2	COMMAND	NIFC C56	ANTELOPE GRP	172.3500	000.0	163.0375	T2 - 123.0	THOMPSON PK. ALL REPEATERS LINK BACK TO ICP.
3	COMMAND	NIFC C89	BRANCH 16	173.7375	000.0	164.0125	T2 - 123.0	ANTELOPE L.O. ALL REPEATERS LINK BACK TO ICP.
4	COMMAND	NIFC C91	JANESVILLE	173.9750	000.0	165.4625	T2 - 123.0	SHAFFER MTN. ALL REPEATERS LINK BACK TO ICP.
5	COMMAND	NIFC C95	BRANCH 16	170.1750	000.0	165.5750	T2 - 123.0	WESTWOOD. ALL REPEATERS LINK BACK TO ICP.
6	COMMAND	NIFC C99	BRANCH 16	170.1375	000.0	165.5000	T2 - 123.0	W. PROSPECT PK. ALL REPEATERS LINK BACK TO ICP.
7	TACTICAL	VFIRE 22	CLEAR BRANCH	154.2650N	T6 - 156.7	154.2650N	T6 - 156.7	WESTWOOD/LASSEN. FSR
8	TACTICAL	VFIRE 23	ANTELOPE / L. CONT.	154.2950N	T6 - 156.7	154.2950N	T6 - 156.7	ANTELOPE GRP. LASSEN CONTING
9	TACTICAL	VFIRE 24	HICKS / JUNCTION	154.2725N	T6 - 156.7	154.2725N	T6 - 156.7	
10	TACTICAL	VFIRE 25	DIV Q	154.2875N	T6 - 156.7	154.2875N	T6 - 156.7	
11	TACTICAL	VFIRE 26	DIV S / T / U	154.3025N	T6 - 156.7	154.3025N	T6 - 156.7	
12	TACTICAL	NIFC T1	DIV R / MILFORD	168.0500N	T2 - 123.0	168.0500N	T2 - 123.0	
13	A/G CMD	A/G CMD	ALL DIVS	166.6000N	000.0	166.6000N	000.0	A/G COMMAND- WEST ZONE
14	A/G TACTICAL	CDF T18	ALL DIVS	159.3450	T16 - 192.8	159.3450	T16 - 192.8	A/G TACTICAL- WEST ZONE
15	MEDICAL	CALCORD	ALL DIVS	156.0750N	T6 - 156.7	156.0750N	T6 - 156.7	
16	AIRGUARD	AIRGUARD	ALL DIVS	168.6250	000.0	168.6250	T1 - 110.9	EMERGENCY ONLY
17								
18								
19								
20	AIRGUARD	AIRGUARD	ALL DIVS	168.6250	000.0	168.6250	T1 - 110.9	EMERGENCY ONLY

5. Special Instructions

NIFC Frequencies will require the user to select Tone 2 in CALFIRE Statewide programmed radios. West Communications is located in Susanville.

Radio Zone 52 / Group 14, DIXE L11

6. Prepared by (Communications Unit Leader): Name: **JOHN AGUILERA** Signature: 

ICS 205 - CONTROLLED UNCLASSIFIED INFORMATION/BASIC NIMS IAP Date/Time: 09/03/21 1930

INCIDENT RADIO COMMUNICATIONS PLAN (ICS 205)

Controlled Unclassified Information//Basic

1. Incident Name:		2. Date/Time Prepared:		3. Operational Period:	
DIXIE FIRE		Date: 09/03/2021	Date/Time From: 09/04/2021 0700	DAY/NIGHT	Date/Time To: 09/05/2021 0700
		Time: 0908		SAT	SUN

4. Basic Radio Channel Use:										
Zone Group	Ch #	Function	Channel Name/Trunked Radio System Talkgroup	Assignment	RX Freq	RX Tone/NAC	TX Freq	TX Tone/NAC	Mode (A, D, or M)	Remarks
	01	COMMAND	NIFC C68	ALL DIVS	172.0875	T3 131.8	162.3625	T3_131.8	A	THOMPSON PK
	02	COMMAND	NIFC C8	ALL DIVS	169.5375	T3 131.8	164.7125	T3 131.8	A	SPANISH PK
	03	COMMAND	NIFC C3	AH DIV	170.4250	T3 131.8	168.0750	T3 131.8	A	MT. HOUGH
	04	COMMAND	NIFC C46	ALL DIVS	171.0875	T3 131.8	164.6000	T3 131.8	A	DYER
	05	COMMAND	NIFC C12	ALL DIVS	167.3250	T3 131.8	167.3250	T3 131.8	A	KETTLE ROCK
	06	COMMAND	NIFC C30	ALL DIVS	171.1125	T3 131.8	162.1875	T3 131.8	A	DIXIE MTN
	07	TACTICAL	VFIRE 22	DIV NN, STRUCTURE	154.2650	T6 156.7	154.2650	T6_156.7	A	
	08	TACTICAL	VFIRE 23	DIV UU	154.2950	T6 156.7	154.2950	T6_156.7	A	NIGHT DIV UU
	09	TACTICAL	NIFC T5	DIV QQ, DIV WW/XX	166.7750	T3 131.8	166.7250	T3 131.8	A	
	10	TACTICAL	NIFC T6	DIV RR	166.7750	T3 131.8	166.7750	T3 131.8	A	NIGHT DIV RR
	11	TACTICAL	NIFC T7	DIV PP	168.2500	T3 131.8	168.2500	T3 131.8	A	
	12	TACTICAL	NIFC T99	GENESSEE, MILITARY, DIV OO	165.3625	T3 131.8	165.3625	T3 131.8	A	
	13	AIR TO GROUND	AG COMMAND E	ALL DIVS	168.3375	000.0	168.3375	000.0	A	
	14	AIR TO GROUND	AG TAC E	ALL DIVS	169.1000	000.0	169.1000	000.0	A	
	15	AIR TO GROUND	CALCORD	MEDEVAC	156.0750	T6 156.7	156.0750	T6 156.7	A	CALCORD MEDEVAC
	16	AIR GUARD	AIRGUARD	EMERGENCY	168.6250	000.0	168.6250	T1_10.9	A	EMERGENCY

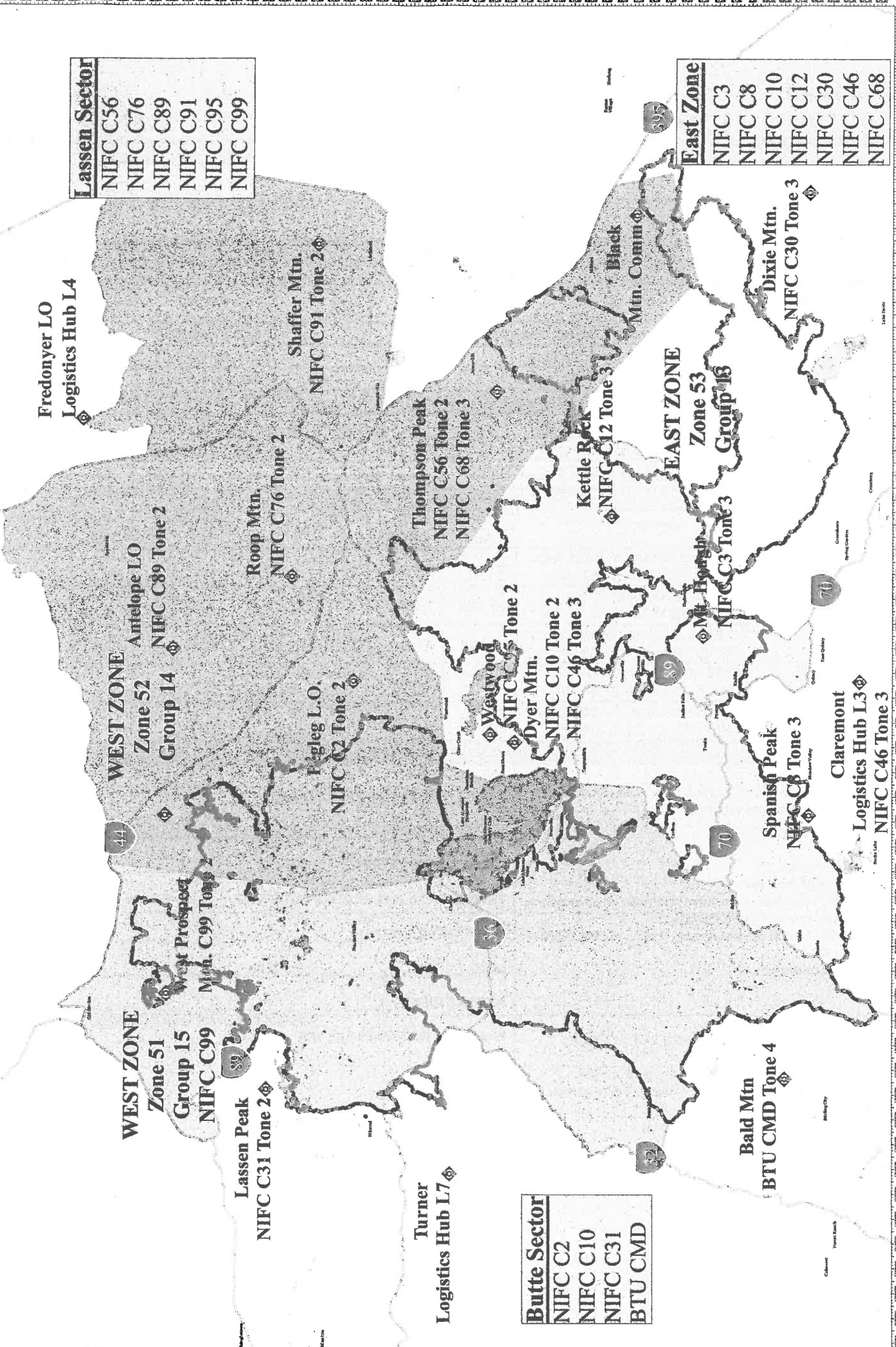
5. Special Instructions:

6. Prepared By	Name: BRANDON DIEMER
(Communications Unit Leader)	Signature:
ICS 205	Date/Time: 09/03/2021 0908

Lassen Sector	
NIFC C56	
NIFC C76	
NIFC C89	
NIFC C91	
NIFC C95	
NIFC C99	

Butte Sector	
NIFC C2	
NIFC C10	
NIFC C31	
BTU CMD	

East Zone	
NIFC C3	
NIFC C8	
NIFC C10	
NIFC C12	
NIFC C30	
NIFC C46	
NIFC C68	



**RADIO ZONES
DIXIE INCIDENT**
CA-RTU-009205
Sept 04, 2021

WEST ZONE
Group 13
WEST ZONE
Group 14
EAST ZONE
Group 16
Map by
Wildfire Study Site Postmaster



MEDICAL PLAN	1. INCIDENT NAME	2. DATE PREPARED	3. TIME PREPARED	4. OPERATIONAL PERIOD
	Dixie CA-BTU-009205	09/3/21	1700	0700-0700 09/4/21-09/05/21

5. INCIDENT MEDICAL AID STATIONS			
MEDICAL AID STATIONS	LOCATION		PARAMEDICS
CAL-MAT	ICP		YES NO DR & RN

6. TRANSPORTATION				
A. Air Ambulances				
NAME	ADDRESS	PHONE	PARAMEDICS	
			YES	NO
Guard 841 (24-hour Hoist)	Reno International Airport	Susanville ECC	XX	
Guard 820 (24-hour Hoist)	Redding	Susanville ECC	XX	
SEMSA 1	Susanville	Susanville ECC	XX	

B. Ground Ambulances				
Mercy Ambulance	Medic 5	DP-146 (Branch 16)	CMD Channel	XX
Manteca Ambulance	Medic 6	ICP	CMD Channel	XX
Del Norte Ambulance	Medic 8	Hat Creek Spike (Branch 13)	CMD Channel	XX

7. HOSPITALS								
NAME	ADDRESS	TRAVEL TIME		PHONE	HELIPAD		BURN CENTER	
		AIR	GRND		YES	NO	YES	NO
Banner Lassen Medical Ctr.	1800 Spring Ridge Dr. Susanville 40 28.27 N 120 37.67 W	5 min	10 min	(530) 257-0911	XX			XX
Enloe Hospital Level 2 Trauma	1530 Esplanade, Chico 39 44.56 N 121 51.10 W	15 min	1.5 hrs	(530) 332-7740	XX			XX
UC Davis Medical Center Level 1 Trauma	2315 Stockton Blvd, Sacramento 38 33.33 N 121 27.32 W	45 min	3 hrs	(916) 734-2011	XX		XX	
Renown Regional Medical Level 2 Trauma	1115 Mill Street Reno, NV 39 31.32 N 119 47.44 W	35 min	1.5 hrs	(775) 982-2005 Charge RN Line	X 2			XX
Mercy Hospital Level 2 Trauma	2175 Rosaline Ave, Redding, CA 40 34.33 N 122 23.80 W	20 min	2.5 hrs	(530) 225-7201 Nurse Line	XX			XX

8. MEDICAL EMERGENCY PROCEDURES	
<p>LINE EMERGENCY: Crew Supervisor to contact Division Supervisor with patient complaint/condition and location.</p> <ul style="list-style-type: none"> Division Supervisor contacts: <ul style="list-style-type: none"> FEMT / FEMP Communications Unit Div is the IC for the Incident Communication Unit will clear command channel for emergency traffic; as needed for Minor/Major Emergency. Communications will switch all emergency traffic to CALCORD as needed or requested. Communications Unit contacts: <ul style="list-style-type: none"> Medical Unit Safety Operations Division Supervisor will run medical emergency on CALCORD. Medical Unit will: <ol style="list-style-type: none"> Dispatch air/ground ambulance to as appropriate. If necessary, after patient pickup, dispatch ambulance to helibase for transportation. Notify receiving hospital of injury status. <p>***Start a 20-minute timer***</p> <p>CAMP EMERGENCY: Contact Medical Unit with patient complaint/condition and location. Medical Staff will respond to stabilize incident.</p>	<p>INJURY REPORTING PROCEDURES</p> <p>NATURE OF INJURY _____</p> <p>LOCATION OF PATIENT _____</p> <p>TRANSPORTATION REQUESTED BY: AIR _____ GROUND _____</p> <p>POINT OF PICKUP _____</p> <p>LAT _____ LONG _____</p> <p>PATIENT UNIT ID _____</p> <p>REMINDER: DO NOT GIVE PT NAME OVER RADIO</p> <p>IS AN EMT WITH PATIENT: YES _____ NO _____</p> <p>AGE _____</p> <p>SEX: MALE _____ FEMALE _____</p> <p>ALL EMERGENCIES—Secure the area and identify witnesses for later investigation. Keep an accurate log of events.</p> <p>***Start a 20-minute timer***</p> <p>Medical Unit (951) 757-4670</p>

9. PREPARED BY (MEDICAL UNIT LEADER) Raice Wicklas MEDL 	10. REVIEWED BY (SAFETY OFFICER) Brad Niven SOF1 
------------------------------------------------------------------------------------------------------------------------------------------------	-------------------------------------------------------------------------------------------------------------------------------------------



CAL FIRE IMT 1 COVID -19 ACTIONS



PERSONNEL WITH COVID-19 SYMPTOMS

- **Symptoms per CDPH current guidelines include the following:**
 - Cough, fever, chills, muscle pain, shortness of breath
Sore throat, new loss of taste of smell
- **Incident Base of Fire Line**
 - Maintain appropriate face covering
 - Notify supervisor and proceed to CALMAT
 - Isolate and assess patient
 - Medical direction to test, return patient to home unit/agency for further testing

CONTACTED OR EXPOSED PERSONNEL AND ASYMPTOMATIC

- Notify supervisor
- Maintain appropriate face covering
- Self-monitor for symptoms

PREVENTATIVE MEASURES TO SLOW THE TRANSMISSION OF COVID-19:

- Wash your hands regularly with soap and water or clean them with alcohol-based hand sanitizer
- Maintain at least six feet distance between you and people coughing or sneezing
- Avoid touching your face
- Cover your mouth and nose when coughing or sneezing
- Stay home if you feel unwell
- Refrain from smoking and other activities that weaken the lungs
- Practice physical distancing by avoid unnecessary travel and staying away from large groups of people
- Maintain proper personal care (healthy diet and rest)



CAL FIRE INCIDENT MANAGEMENT TEAM 1



1. INCIDENT NAME: Dixie Incident		2. DATE PREPARED: September 3, 2021		3. TIME PREPARED: 1800	
4. PREPARED BY: Clinton Hamilton SOF1-T		5. LEADER NAME: Clinton Hamilton SOF1-T		6. OPERATIONAL PERIOD: 9/3/2021 0700 TO 9/4/2021 0700	

SAFETY MESSAGE

Stop...Think...Organize...Proceed...

- Make sure everyone receives a briefing on the current days IAP.
- Utilize all PPE during line operations.
- Monitor your hydration/nutrition intake and keep adequate supplies of both.
- Be aware of rotor wash when working near helicopters.
- Watch for hazard trees in the burned and unburned areas of the incident.
- Maintain situational awareness when driving.
- Monitor personnel fatigue both mental and physical.
- Make sure L.C.E.S is being utilized during all aspects of the incident.

Extreme Fire Behavior

- Expect intense fire runs
- Potential for pyro-cumulus
- Rapid changes in conditions
- Long range spotting of 1 mile plus is possible
- Maintain situational awareness

COVID-19

- Follow local masking guidelines
- Practice good personnel hygiene
- Report all illness to your supervisor
- Maintain social distancing
- Wash your hands often
- Clean and disinfect often
- Be alert for symptoms

CAL FIRE INCIDENT MANAGEMENT TEAM 1 SOF1(T) Clinton Hamilton



DIXIE FIRE

LOGISTICS MESSAGE



SERVICES SCHEDULE – SUSANVILLE BASE CAMP

MKU:

Breakfast:	0500-1100
Dinner:	1700-2200
Sack Lunch Distribution:	0600-2100
Laundry Service:	0600-2200
Showers:	0500-2300
Supply:	0600-2200
Saw Shop:	0600-2200
Radio Repair:	0630-1830
Fuel:	24 hr Service
MERT:	24 hr Service
Cal Mat:	24 hr Service

SERVICES SCHEDULE – HAT CREEK CAMP

MKU:

Breakfast:	0600-0900
Dinner:	1830-2130
Sack Lunch Distribution:	0600-2100
Laundry Service:	0600-2200
Showers:	0600-2200
Supply:	0700-1000
Radio Repair:	0700-0800
Fuel:	0600-2200
Medical: (Medic #8)	24 hr Service

REFRIDGERATION TRUCK (ICE, WATER and GATORADE)

Susanville Base	24 hr Service
Hat Creek Base	24 hr Service



DIXIE INCIDENT CAL FIRE IMT 1 Supply Message



- Strike Team Leaders or Designee's only in the Supply line
- Please have a 213 filled out with all of your resource/strike team needs, With divisions signature
- CALFIRE 101 filled out for all items left on the line, with divisions signature
- All firing device orders must have operations signature to get resupplied

Thank you



VEHICLE REPAIR REQUEST CHECKLIST

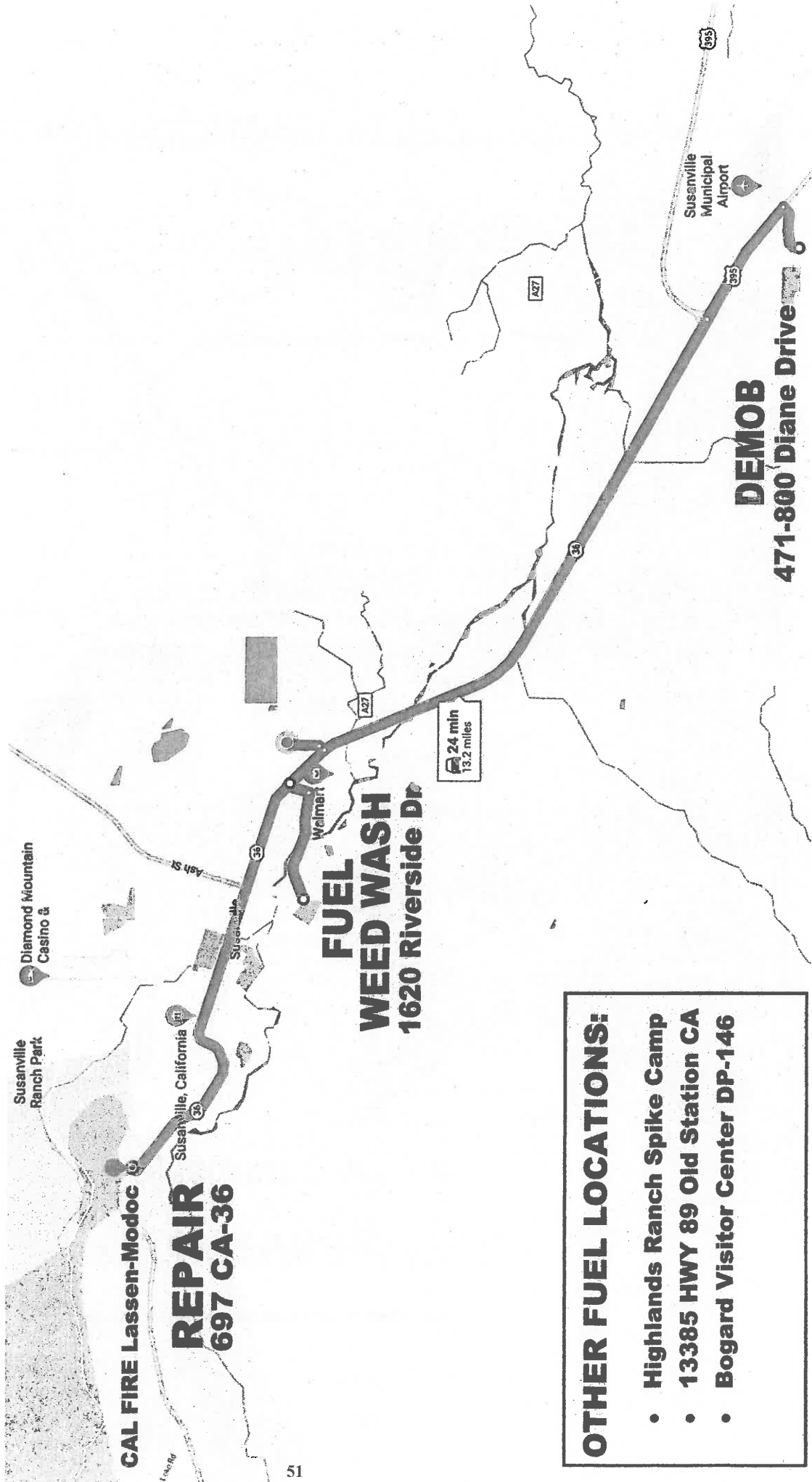


To expedite repairs on disabled equipment on the fireline we request the following information

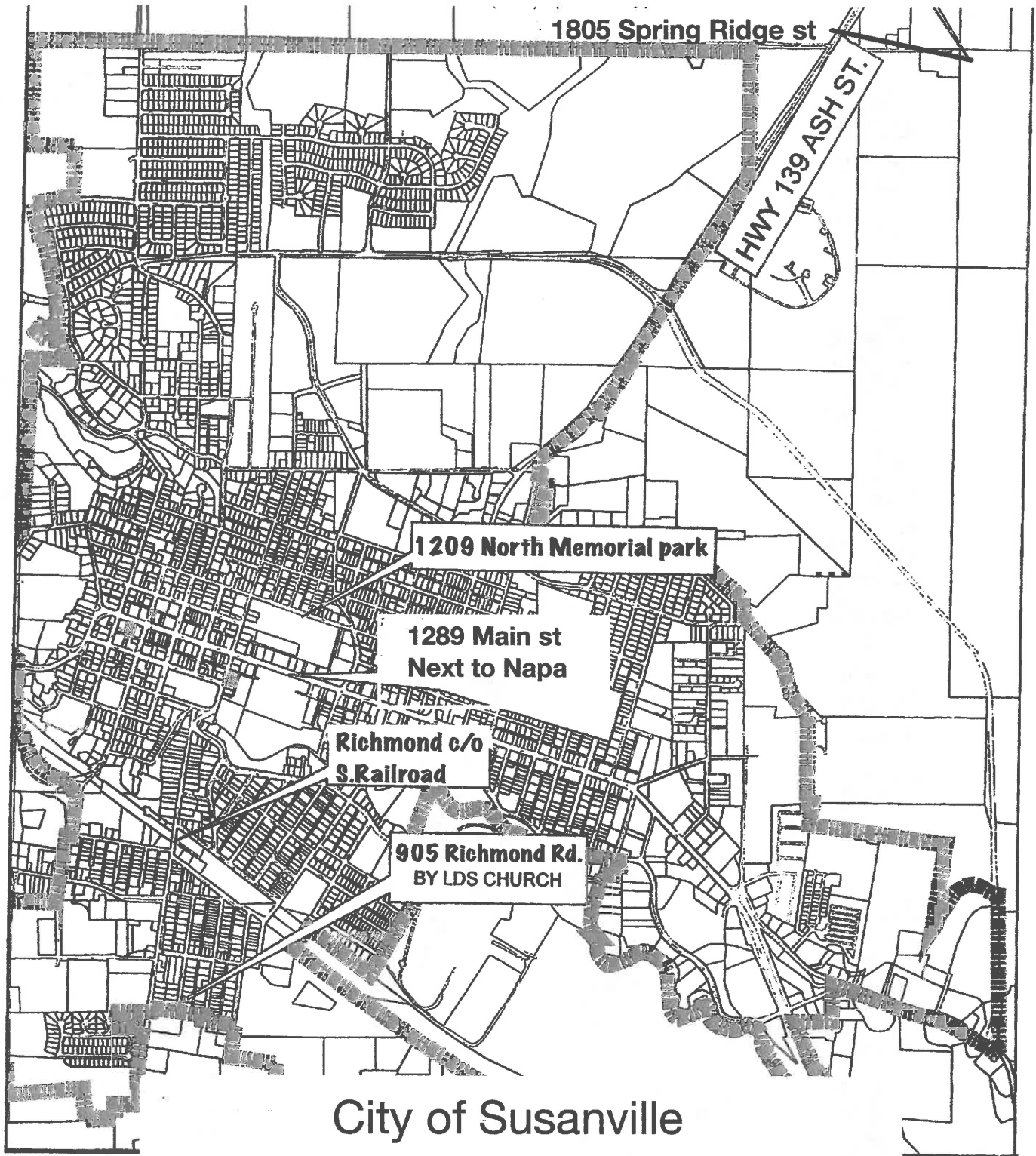
Resource Order # (O, E, C)					
Contact Name					
Contact Phone Number					
Branch		Division			
Command		Tone		TAC	
Vehicle ID (IE: Engine #, Dozer #, Utility #) & (CAL FIRE Equipment X Number)					
Year, Make, Model					
Exact Location of Vehicle					
Description of Problem					



FUEL-REPAIR-DEMOMB MAP



- OTHER FUEL LOCATIONS:**
- Highlands Ranch Spike Camp
 - 13385 HWY 89 Old Station CA
 - Bogard Visitor Center DP-146



City of Susanville

Dixie Fire Water Sites



DIXIE INCIDENT WEST ZONE CAL FIRE IMT 1 PUBLIC INFORMATION



Incident Information Line: (530) 592-0838
Incident Media Line: (530) 588-0845

CURRENT INCIDENT STATUS	
Incident Start Date: 7/13/21	Incident Start Time: 5:15 p.m.
Cause: Under Investigation	Acres:
Containment:	Total Personnel:

MEDIA

The California State Penal Code Section 409.5(d) allows the news media to enter scenes of disaster, riot, or civil disturbance. Properly identified members of the news media should not be restricted from entering locations specified within the code. However, this does not include crime scenes, private property and does not imply that the news media may interfere with incident operations while they are in the areas of concern. More information can be found by scanning the QR code to the right with your mobile device.



CAL FIRE SOCIAL MEDIA POLICY

When assigned to a CAL FIRE incident, you will adhere to the CAL FIRE Social Media Policy, Section 0691. You can find further information about the CAL FIRE Social Media by scanning the QR code to the right with your mobile device.



FEDERAL FIRE SOCIAL MEDIA POLICY

Social media posts can reflect on the professionalism of your crew, your agency, and Wildland Firefighting Community. The U.S. Forest Service has enjoyed a reputation as the world leader in wildland firefighting for over 100 years. Protect our legacy with good conduct on the fireline and online. When assigned to a federal fire you are considered a federal employee under the delegation of authority. Even if you are a contractor, AD or from a partner agency we recommend you follow these ethics guidelines which apply to federal employees all the time.

PHOTOGRAPHS AND VIDEOS OF INCIDENT

The Public Information Office would like copies of the video and pictures that you safely took while not in an emergency, fire suppression activity or in an overhead assignment. Bring your video and pictures to the Public Information trailer; they will be reviewed and possibly uploaded to our many CAL FIRE social media sites. Remember, we don't want photographs or videos that depict unsafe, unprofessional, or embarrassing circumstances, which are a serious breach of ethics. You can email the photos to: dixiefire2021@gmail.com.

LOST AND FOUND

The Information Section will manage lost and found items for the incident, **located at the PIO Trailer by fuel.**



Incident Update

<p>PICK UP PACKAGES AT THE PIO TRAILER BY FUEL</p> <p>ATTN: Recipients Name and E/O-number</p> <p>Dixie Fire PIO Trailer</p> <p>1620 Riverside Dr</p> <p>Susanville, CA 96130</p>



EVAC Map

*** Mail delivered to the Fairgrounds will be transferred daily to the PIO trailer by fuel ***



DIXIE INCIDENT CAL FIRE IMT 1 FINANCE MESSAGE



FINANCE SECTION

Located in trailer row near the Feeding area

COST SHARE REPORTING

PHONE: 925-532-5438

This is a cost share fire. All line supervisors (DIVS, OPBD, STAM, etc.) need to check in with the Cost Share Team (CATS) each day at the end of your shift. The Cost Share Team (CATS) is located Susanville Base Camp.

- ❖ Please report IN PERSON to the Cost Share Team at the end of your shift.
- ❖ East Zone Cost Share Reporting: 925-532-5610

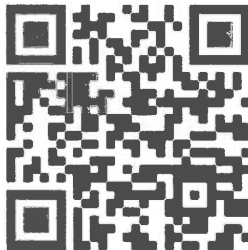
TIME UNIT

- CAL FIRE PERSONNEL – make sure you have started your eFC-33's and update after each shift. Please make sure E-Pay schedules are up to date. An E-Pay Café is set up outside the time trailer.
- HIRED EQUIPMENT SUPPLIERS – Check in with the Time Unit and drop off your agreements.
- DIVISION GROUP SUPERVISORS / LINE SUPERVISORS – Please make sure to turn in fire equipment shift tickets at the end of each shift.
- OES / LOCAL GOVERNMENT / EMAC RESOURCES – Please see the OES representatives in the OES Comm Unit to track time.

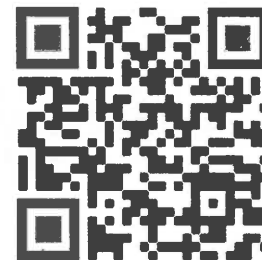
COMP / CLAIMS

To report any property damage and suppression repair needs or water use please use the below QR codes:

PROPERTY DAMAGE QR CODE



WATER USE REPORT



SHIFT TICKET EXAMPLE

EMERGENCY SHIFT TICKET and EVALUATION FORM						Contractor Name			
Incident or Project Name LILAC INC			Incident Number CAMVU 024612		Request Number E #		H2O DUDE		
Agreement Number MEU - 0000012345						Operator #1 JOHN HANKS		Operator #2	
Equipment Make FREIGHTLINER			Equipment Model / Type WATER TENDER 2500+ TYPE 1			Operator Furnished By: <input checked="" type="checkbox"/> Contractor <input type="checkbox"/> Government			
Serial Number VIN#			Licence Number 55555555			Operating Supplies Furnished By: <input checked="" type="checkbox"/> Contractor <input type="checkbox"/> Government			
Equipment Use (Circle) Hours Days / Miles						Equipment Status <input checked="" type="checkbox"/> Inspected <input checked="" type="checkbox"/> Under Agreement			
Date Mo / Day		Start	Stop	Work	Assignment				
12/8		0700	1900	12	DIV A				
12/8		1900	2400	5	OFF SHIFT				
12/9		0001	0700	7	OFF SHIFT				
Vendor Rating						Govt. Rep. Name and Position - PRINT Mike Weber - DIVS			
Met Performance Expectations						Govt. Rep. Signature <i>Mike Weber</i>			
Equipment in Safe Working Condition						Contractor Signature JOHN HANKS			
Operator Skill Level						Date 12/08/20			
Operates Safely						Time 1900			
Operator's Cooperation Level						Remarks/Comments ** ONE OPERATOR			
Overall Performance						CALFIRE 297 (Rev 3-2011)			
* NOTE: Any rating of POOR requires an explanation in Comment Section.						**Final evaluation or for more documentation, use an ICS Form 230 or equivalent.			
Pink - Finance		Blue - Home Unit HE Coordinator		Yellow - Vendor		White - Govt Representative			

EMERGENCY SHIFT TICKET and EVALUATION FORM						Contractor Name				
The responsible Government Officer will complete this form each shift						WATER GUY				
Incident or Project Name LILAC INC			Incident Number CAMVU 024612		Request Number E #		Operator #1 BOB SMITH		Operator #2 BILL SMITH	
Agreement Number BTU-0000329876						Operator Furnished By: <input checked="" type="checkbox"/> Contractor <input type="checkbox"/> Government				
Equipment Make PETERBILT			Equipment Model / Type WATER TENDER 2500 + TYPE 1			Operating Supplies Furnished By: <input checked="" type="checkbox"/> Contractor <input type="checkbox"/> Government				
Serial Number VIN #			Licence Number 9999999			Equipment Status <input checked="" type="checkbox"/> Inspected <input checked="" type="checkbox"/> Under Agreement				
Equipment Use (Circle) Hours Days / Miles						Released by Government				
Date Mo / Day		Start	Stop	Work	Assignment					
12/8		0700	2400	17	DIV M					
12/9		0001	0700	7	DIV M					
Vendor Rating						Govt. Rep. Name and Position - PRINT Mike Weber - DIVS				
Met Performance Expectations						Govt. Rep. Signature <i>Mike Weber</i>				
Equipment in Safe Working Condition						Contractor Signature <i>Bill Smith</i>				
Operator Skill Level						Date 12/09/20				
Operates Safely						Time 0700				
Operator's Cooperation Level						Remarks/Comments ** 2 OPERATORS				
Overall Performance						CALFIRE 297 (Rev 3-2011)				
* NOTE: Any rating of POOR requires an explanation in Comment Section.						**Final evaluation or for more documentation, use an ICS Form 230 or equivalent.				
Pink - Finance		Blue - Home Unit HE Coordinator		Yellow - Vendor		White - Govt Representative				

Turn shift tickets into Finance.

SHIFT TICKET EXAMPLE

EMERGENCY SHIFT TICKET and EVALUATION FORM					Contractor Name					
Incident or Project Name TUBBS			Incident Number CALNU010045		Request Number E#					
Agreement Number CZU-0000023987					Operator #1 BOB SMITH					
Equipment Make CAT					Operator #2 CHRIS SMITH					
Serial Number 678432			Equipment Model / Type D6M, DZR type 2							
Licence Number N/A			Operator Furnished By: <input checked="" type="checkbox"/> Contractor <input type="checkbox"/> Government							
Equipment Use (Circle) Hours Days / Miles			Operating Supplies Furnished By: <input checked="" type="checkbox"/> Contractor <input type="checkbox"/> Government							
Date Mo / Day			Equipment Status <input checked="" type="checkbox"/> Inspected <input checked="" type="checkbox"/> Under Agreement							
Start			Released by Government							
Stop			Withdrawn by Contractor							
Work			Remarks/Comments **							
Assignment			2 OPERATORS							
8/3 0700 2400 17							DIV M			
8/4 0001 0700 7							DIV M			
Vendor Rating					Govt. Rep. Name and Position - PRINT					
Poor* Avg. Good Exc. N/A					Mike Weber - HEQB					
Met Performance Expectations					Govt. Rep. Signature					
Equipment in Safe Working Condition					<i>Mike Weber</i>					
Operator Skill Level					Contractor Signature					
Operates Safely					<i>Bob Smith</i>					
Operator's Cooperation Level					Date					
Overall Performance					Time					
					08/04/20 0700					
* NOTE: Any rating of POOR requires an explanation in Comment Section.					CALFIRE 297					
**Final evaluation or for more documentation, use an ICS Form 230 or equivalent.					(Rev 3-2011)					
Pink - Finance		Blue - Home Unit HE Coordinator		Yellow - Vendor		White - Govt Representative				

EMERGENCY SHIFT TICKET and EVALUATION FORM					Contractor Name					
The responsible Government Officer will complete this form each shift										
Incident or Project Name TUBBS			Incident Number CALNU010045		Request Number E #					
Agreement Number CZU-0000023987					Operator #1 BOB SMITH					
Equipment Make KENWORTH					Operator #2 CHRIS SMITH					
Serial Number VIN #			Equipment Model / Type 18 WHEEL TRANSPORT							
Licence Number 9999999			Operator Furnished By: <input checked="" type="checkbox"/> Contractor <input type="checkbox"/> Government							
Equipment Use (Circle) Hours Days / Miles			Operating Supplies Furnished By: <input checked="" type="checkbox"/> Contractor <input type="checkbox"/> Government							
Date Mo / Day			Equipment Status <input checked="" type="checkbox"/> Inspected <input checked="" type="checkbox"/> Under Agreement							
Start			Released by Government							
Stop			Withdrawn by Contractor							
Work			Remarks/Comments **							
Assignment			2 OPERATORS							
8/3 0700 2400 17							DIV M			
8/4 0001 0700 7							DIV M			
Vendor Rating					Govt. Rep. Name and Position - PRINT					
Poor* Avg. Good Exc. N/A					Mike Weber - HEQB					
Met Performance Expectations					Govt. Rep. Signature					
Equipment in Safe Working Condition					<i>Mike Weber</i>					
Operator Skill Level					Contractor Signature					
Operates Safely					<i>Bob Smith</i>					
Operator's Cooperation Level					Date					
Overall Performance					Time					
					08/04/15 0800					
* NOTE: Any rating of POOR requires an explanation in Comment Section.					CALFIRE 297					
**Final evaluation or for more documentation, use an ICS Form 230 or equivalent.					(Rev 3-2011)					
Pink - Finance		Blue - Home Unit HE Coordinator		Yellow - Vendor		White - Govt Representative				

Turn shift tickets into Finance.



FEDERAL FINANCE MESSAGE

**Finance is now accepting electronic submission of CTR's and Shift Tickets
via email/scan to:**

2021.dixie.ca.finance@firenet.gov

How to E-mail documents: scan the QR code below email your scanned documents

****NOTE: YOUR DOCUMENTATION MUST BE AN ATTACHMENT, AND NOT EMBEDDED IN
BODY OF THE EMAIL****

<p style="text-align: center;">All Resources: Scan QR to E-mail Finance</p> <div style="text-align: center;">  </div> <p style="text-align: center;"><u>2021.dixie.ca.finance@firenet.gov</u> SUBJECT: Include Key Word: Time</p>	<p style="text-align: center;">Comp/Claims: Scan QR to E-mail Finance</p> <div style="text-align: center;">  </div> <p style="text-align: center;"><u>2021.dixie.ca.finance@firenet.gov</u> SUBJECT: <i>Include key words Comp/Claims</i></p>
BE SURE TO CHECK IN WITH FINANCE WHEN YOU ARRIVE!	

FEDERAL FINANCE HOTLINE: 213-598-3680

The following resources please come see Finance:

DIXIE FIRE : PN N5ZB21 (1522)

CA-BTU-009205

INCIDENT ACTION PLAN



DIXIE FIRE EAST ZONE

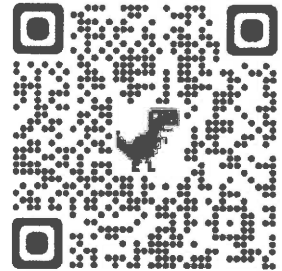
SATURDAY – SEPT 04 2021

GPS Format NAD83 Degrees Decimal Minutes

MEETING SCHEDULE

- 0700 Morning Briefing
- 0900 Cooperators Meeting
- 1200 C&G
- 1700 Pre-Planning Meeting
- 1800 Planning Meeting
- 1900 Night Operations Briefing

- Dixie EAST Zone:
Remote Incident Briefing Access
- IAP's and Maps
- Demob List
- Trainee Sign-up/Closeout



WEST Zone IAP, Maps,
Briefing



FIRING OPERATION CHECKLIST

Location: _____

Date: _____ Time: _____

Firing Supervisor _____

1. Personnel Briefing

- Objectives
- Conditions (weather, fuel, burn window)
- Resource assignments
 - Firing personnel
 - Holding forces
 - Lookouts
- Ignition plan/sequence
- Communication Plan
- Contingency Plan
- Safety issues

2. Go / No-Go

- All personnel briefed
- Weather forecast reviewed
- Resources in place
- Lookouts posted as needed
- Anchor and termination firing points identified
- Communications systems in place
- Fire behavior forecast reviewed
- Escape routes and safety zones established and made known
- Adjoining forces/Air Attack notified

3. Supervisor's Approval Prior To Firing

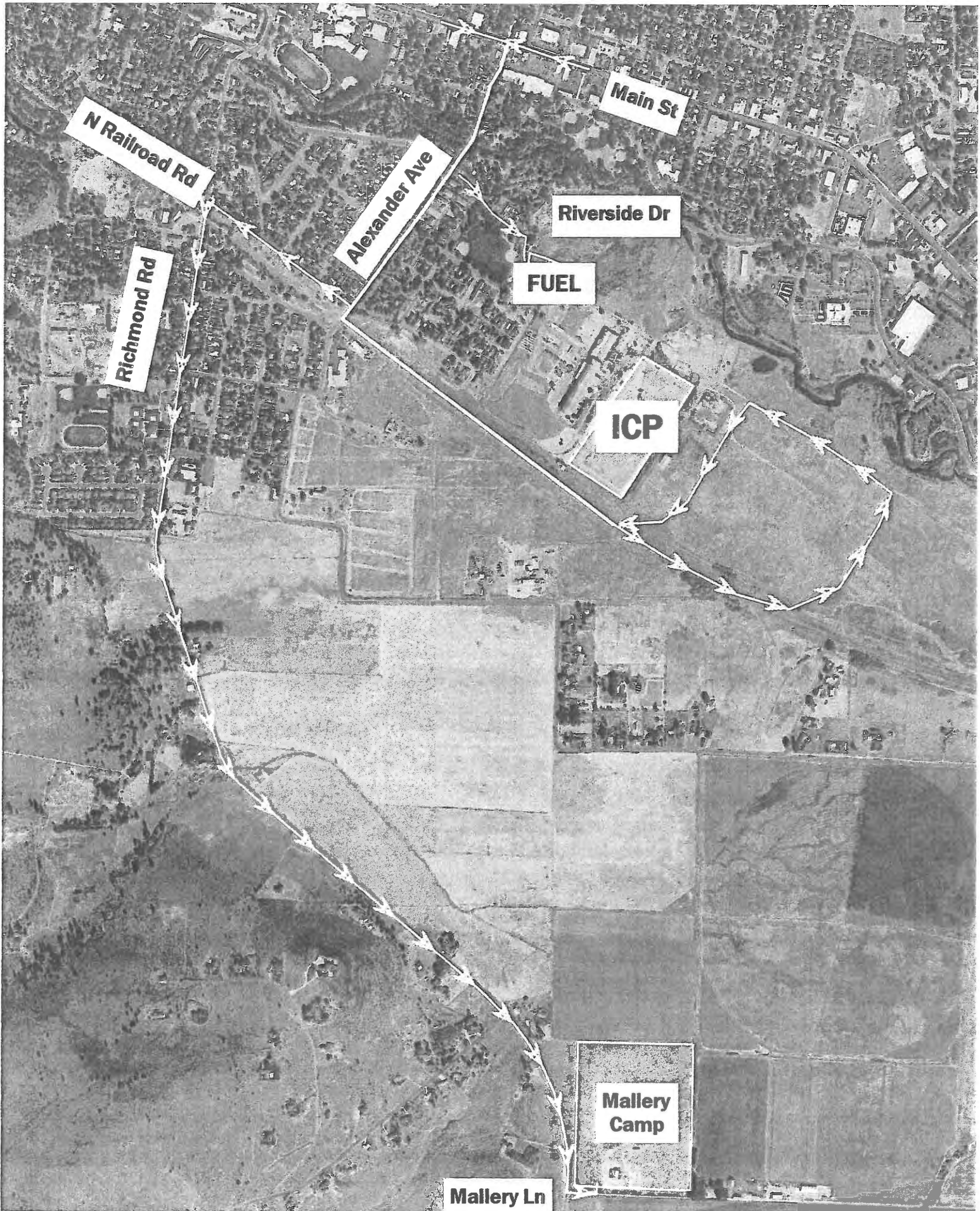
- Division Supervisor
- Branch Director
- Operations Section Chief

4. Other Notifications

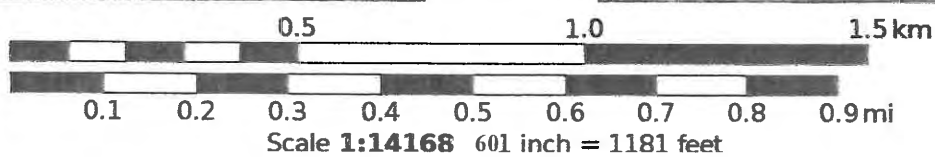
- Other: _____
- Other: _____

Attach Firing Operations Checklist to ICS-214

Rev: Ops Group February 8, 2011



Mercator Projection
WGS84
USNG 10TFK-10TGK
SARTOPO



MALLERY CAMP

EXIT

TENT
SLEEPING

SLEEPERS

SHOWERS

LAUNDRY

ENGINE PARKING

VENDOR
STAGING

HEAVY
EQUIPMENT
PARKING

VENDOR
SLEEPING

NO PARKING

CCC

MALLERY LANE

RICHMOND RD

Mercator Projection
WGS84
USNG Zone 10TFK
SARTOPO

0.1

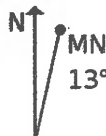
0.2 km

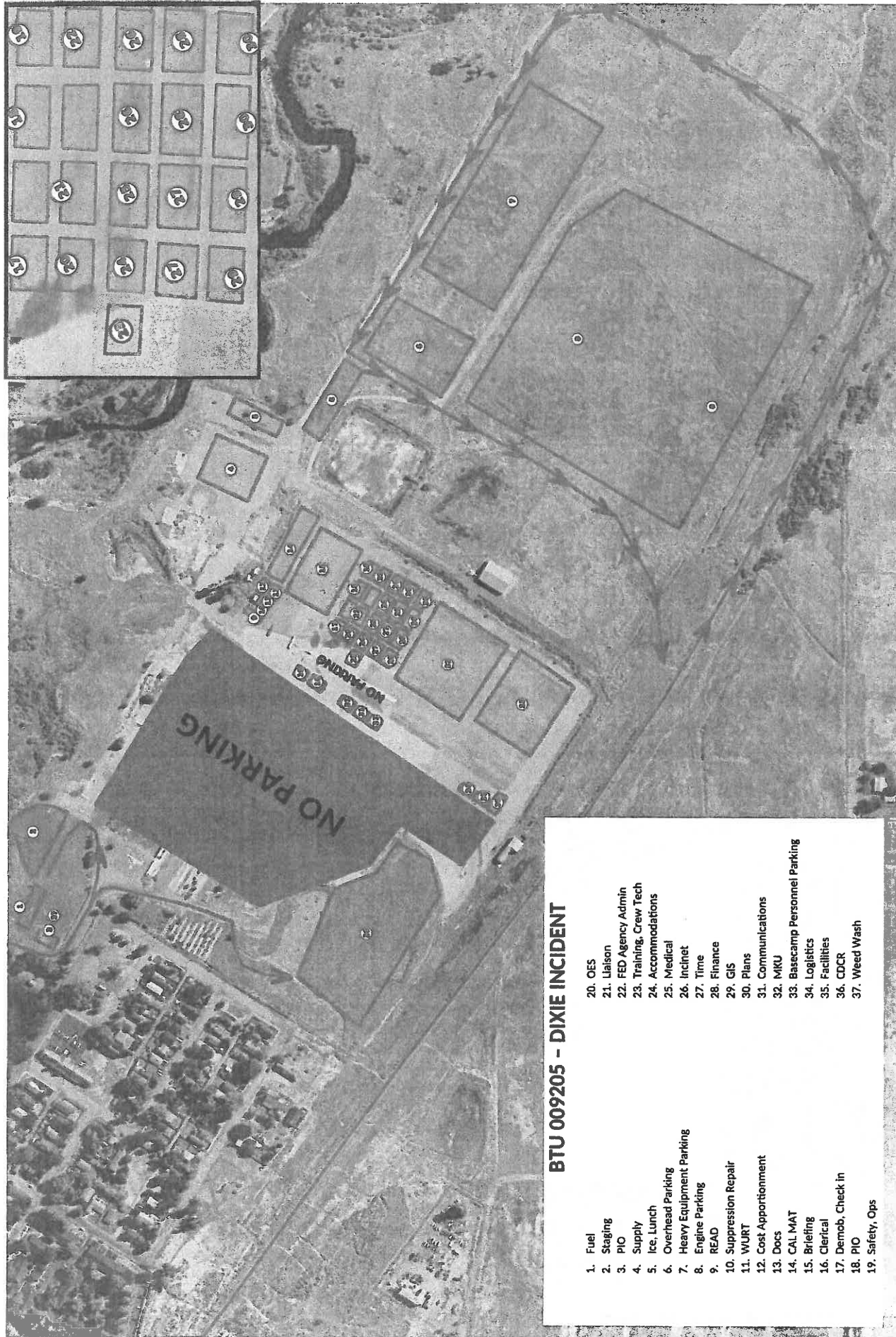
0.1 mi

Scale 1:1975

1 inch = 165 feet

61

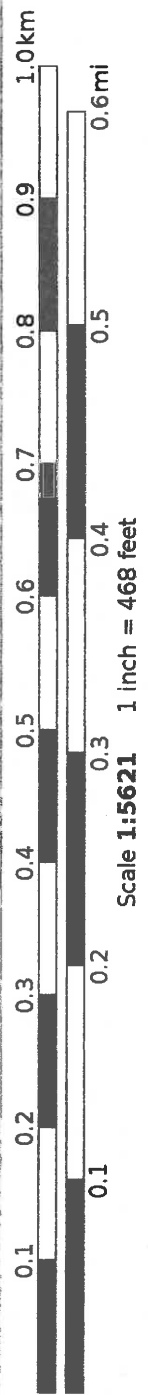




BTU 009205 - DIXIE INCIDENT

- 1. Fuel
- 2. Staging
- 3. PIO
- 4. Supply
- 5. Ice, Lunch
- 6. Overhead Parking
- 7. Heavy Equipment Parking
- 8. Engine Parking
- 9. READ
- 10. Suppression Repair
- 11. WUURT
- 12. Cost Apportionment
- 13. Docs
- 14. CAL MAT
- 15. Briefing
- 16. Clerical
- 17. Demob. Check in
- 18. PIO
- 19. Safety, Ops
- 20. OES
- 21. Liaison
- 22. FED Agency Admin
- 23. Training, Crew Tech
- 24. Accommodations
- 25. Medical
- 26. Inclinert
- 27. Time
- 28. Finance
- 29. GIS
- 30. Plans
- 31. Communications
- 32. MKU
- 33. Basecamp Personnel Parking
- 34. Logistics
- 35. Facilities
- 36. CDCR
- 37. Weed Wash

Mercator Projection
 WGS84
 USNG 10TFK-10TGK

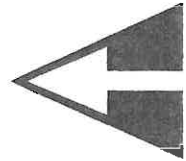


Construction Roadwork

Dixie
2021-CABTU-009205



- Direction of Travel
- Highways
- Primary Roads
- Minor Roads
- Wildfire Daily Fire Perimeter
- County Boundary
- Waterbody



1:300,000 NAD83 UTM 11N
0 1.5 3 6 Miles

