

** CORRECTED **

INCIDENT ACTION PLAN DIXIE WEST ZONE INCIDENT

CA-BTU-009205

Sunday



OPERATIONAL PERIOD

9/5/2021 0700
to
9/6/2021 0700



In Memory of US Forest Service Assistant Fire Engine Operator

MARCUS D. PACHECO

It is with deep sorrow to inform you of the passing of US Forest Service Assistant Fire Engine Operator Marcus Pacheco. Marcus passed away on September 2, 2021 due to an illness.

Marcus has served in his current role in the Almanor Ranger District as an Assistant Fire Engine Operator and Water Tender Operator since 2017 and has served in many capacities for over 30 years with the Wildland and Structural Fire Services. He has worked for the US Forest Service since 2001 with the Plumas, Modoc and Lassen National Forests.

Prior to his work with the Forest Service, Marcus worked for CAL FIRE for 13 seasons (1988 – 2000) with the Lassen-Modoc, Butte and Almanor-Eldorado Units.

- 1988 - 1993: Firefighter 1 – CAL FIRE – LMU
- 1994: Dozer Swamper – CAL FIRE – BTU
- 1995: Fire Apparatus Engineer – CAL FIRE – BTU
- 1996 - 2000: Firefighter 1 – CAL FIRE – LMU/AEU
- 2001: Initial Attack Crewmember – Plumas NF (Milford)
- 2002: Engine Crewmember – Lassen NF (Almanor RD)
- 2003: Engine Crewmember – Plumas NF (Milford)
- 2005 - 2010: Assistant Fire Engine Operator – Lassen NF (Eagle Lake RD)
- 2011 - 2016: Assistant Fire Engine Operator – Modoc NF (Alturas)
- 2017 - 2021: Assistant Fire Engine Operator – Lassen NF (Almanor RD)


In addition to his extensive career in the Wildland Fire Service, Marcus simultaneously served as a Volunteer Firefighter and Training Officer for the Standish-Litchfield Fire Protection District. Marcus remained active in the Community at-large, from school education programs to fighting fire, Marcus always showed up and lent a hand.

Marcus leaves behind his family, friends and colleagues that care for him deeply. He will be missed by the many lives he has touched and impacted. As we remember Marcus, please be sensitive to the needs of the family and those closely affected by his passing.

Cards and condolences can be sent to Marcus Family at
Almanor Ranger District
P.O. Box 767
Chester, CA 96020

The Lassen Team is here and available to listen and/or provide support as folks would like to talk. If you are not comfortable reaching out, you may call Employee Assistance Program at (800) 222-0364.

ORGANIZATION ASSIGNMENT LIST (ICS 203)

1. Incident Name: DIXIE WEST ZONE		2. Operational Period: Date From: 9/5/2021 Date To: 9/6/2021 Time From: 0700 Time To: 0700	
3. Incident Commander(s) and Command Staff:		7. Operation Section:	
IC/UC's	N. Truax, M. Minton	Operations	M. Wink
Deputy	G. Huang, L. Kendall (T), B. Gunn (T)	Deputy Operations	T. Brownell
Safety Officer	B. Niven, C. Hamilton (T)	Night Ops	M. Jonsson
Information Officer	E. Smith, C. Bruno (T), A. Vansciver (T)	Staging	Susanville
Liaison Officer	D. Schloss, N. Armstrong (T)	Sector	Butte
Law Liaison	J. Powell, S. Black	Branch	1 / 5 / 7
		Division/Group	A/B/C/D/E/F/G/I
4. Agency/Organization Representatives:		Division/Group	Butte FSR
Agency/Organization	Name	Sector	Shasta
Lassen National Forest	D. Bumpus	Branch	9
Plumas National Forest	C. Carlton	Division/Group	J/K
Lassen National Park	J. Richardson	Division/Group	L
USFS Tribal Liaison	D. Charley		
Lassen County S.O.	M. Carney	Branch	13
Plumas County S.O.	C. Wingfield	Division/Group	N/O
Shasta County S.O.	C. MacGregor	Division/Group	P
CAL OES	S. Sjøtvedt	Branch	Shasta Contingency
CDCR	S. Harkness	Division/Group	
CCC	C. Harris, A. Loayza	Sector	Lassen
CHP	E. Egide	Branch	16
CAL TRANS	M. Webb, R. Kuykendall	Division/Group	Q
CAL EMSA	B. Gates	Division/Group	R
Air National Guard	C. Henson	Division/Group	S/T/U
PG&E	J. Lee, F. Berbina	Division/Group	Lassen Cont.
CAL FIRE BTU	Butte Duty Chief	Division/Group	
CAL FIRE LMU	L. Caldwell	Sector	Westwood
CAL FIRE TGU	B. Lopez	Division/Group	Westwood
		Branch	Janesville
5. Planning Section:		Division/Group	Milford
Chief	C. Carrera, P. Carlos (T)	Division/Group	Antelope
Deputy	C. Reneau	Division/Group	Junction
Resource Unit	J. Weber, R. Villarino (T)	Division/Group	
Situation Unit	M. Thau, R. Broomfield, J. Gaddie (T)	Branch	FSR
Documentation Unit	R. Frymire	Division/Group	Lassen FSR
Demobilization Unit	S. Sharp	Air Operations Branch	
GISS	N. Meyer	Deputy Air Operations Branch	T. Smith
FBAN	D. Watt	Air Support Group Supervisor	P. York
IMET	D. Williams	Battle Helibase Manager	M. Munson
Training Tech Spec	S. Galvez	Eagle Helibase Manager	P. Bosco
6. Logistics Section		8. Finance/Administration Section:	
Chief	J. Morris, J. Guerra (T)	Chief	J. Franklin, S. Cain, S. Thompson (T)
Supply Unit	L. Story, N. Hoehn (T)	Time Unit	A. DaSilva
Facilities Unit	N. Poe, K. Pope (T)	Procurement Unit	T. Meyer
Ground Support Unit	P. Mock	Comp/Claims Unit	A. Haggerman
Communications Unit	J. Aguilera	Cost Unit	A. Vasquez
Medical Unit	R. Wicklas	Purchasing Unit	I. Rodriguez
Prepared By: Name:	C. Reneau	Position/Title:	DPSC
ICS 203		Date/Time:	9/4/2021 2300 hours
		Signature:	

FIRE BEHAVIOR FORECAST

FORECAST NUMBER: 42

TYPE OF FIRE: Wildfire

FIRE NAME: Dixie – West Zone

OPERATIONAL PERIOD: 9/5/21 – 9/6/21 0700-0700

DATE ISSUED: 9/4/21

TIME ISSUED: 2000

UNIT: BTU – Butte Unit

SIGNED: 
Typed/printed: Don Watt FBAN

INPUTS

WEATHER SUMMARY:

The temperatures will continue to rise through the weekend. The relative humidity will remain low, and the winds will increase slightly today. Temperatures will be 80-93 degrees during the day and 35-55 degrees overnight. Humidity will be 8-15 percent during the day and 30-50 percent overnight. The wind will be west-southwest 5-10 mph with gust to 17 mph in the afternoon. Overnight winds will be southwest 4-6 mph, becoming light and variable after midnight.

OUTPUTS

FIRE BEHAVIOR

GENERAL: *FUELS AND FIRE BEHAVIOR ADVISORY IN EFFECT FOR THE FIRE AREA*****

The fire will continue to be influenced by the west-southwest winds, with slight increases today. The environment is continuing to remain warm and dry through the area with limited humidity recovery overnight. The fire will continue to burn in the understory with isolated torching. The limited winds overnight will allow for smoke to settle over the fire area shading the fuels early in the morning. When the smoke clears the fire will increase in activity. Interior islands will continue to actively burn. Spotting distances will remain short without significant fire and column development.

SPECIFIC:

Lassen/Shasta Sector: The fire will continue to burn in the understory and heavy fuels will continue to consume. Interior islands will burn actively in the afternoon. Torching near the line will produce short range spotting. There is potential for short runs with increased afternoon winds.

Butte Sector: The areas with incomplete consumption of the overstory will continue to have potential for reburn as the needles and leaves create a new ground fuel. Stumps will continue to burn through the root systems. Large dozer piles or piled trees will continue to smolder unless pulled apart and mopped up.

Janesville Branch: The fire will continue to back slowly down the slope towards Highway 395. The sparse fuels in the grass and sagebrush will have a hard time backing to the base of the slope without wind. Without valley heating the southwest wind will not bring fire down the face of the slope.

Clear/Lake Branch: The fire will continue to burn on the interior islands. The dozer piles and stacked trees will continue until pulled apart and mopped up. The smoke will settle in the valley in the morning and will begin to see some clearing in the afternoon.

AIR OPERATIONS

The smoke will be in the fire area longer and may limit operations throughout the day.

SAFETY

The trees in the fire area will continue to be weakened as the ground fuels smolder at the base. Take the time to evaluate the area you are working in for snags and weak trees with the potential to fall.



Dixie West Zone Fire Weather Forecast



FORECAST NO: 50
DATE: September 5th, 2021
FORECAST ISSUED: 1800 September 4th, 2021

FIRE: Dixie West Zone
Incident Meteorologist: Benjamin Bartos
Signed: *Benjamin J. Bartos*

WEATHER DISCUSSION: Light downslope and drainage winds this morning will transition to a light west-southwest wind along ridgetops this afternoon with lighter terrain driven winds in the sheltered valleys. A warming trend continues over the area with highs in the 80s to low 90s in valleys as high pressure takes hold over the area. Very dry conditions remain with relative humidity dropping to critical levels again this afternoon. Heavy smoke will continue to hamper visibility throughout the day as it is trapped under high pressure.

TODAY:

SKY/WEATHER: Heavy smoke throughout the day. Some increase in visibility may be possible this afternoon.

MAX TEMP:	Valleys:	87-93°	MIN HUMIDITY:	Valleys:	08-12%
	Ridgetops:	80-85°		Ridgetops:	10-15%

CHANCE OF THUNDERSTORMS: 0% **LAL:** 1.

WINDS: **Valleys:** Downslope 2-4 mph in the morning. Upslope/upvalley 4-7 mph in the afternoon.
Ridgetops: West 3-6 mph in the morning, West-southwest 5-10 mph with gusts to 17 mph in the afternoon.

HAINES: 4 (low)
MIXING HEIGHT: Rising to 8,900 feet by 1700. **TRANSPORT WIND:** Southwest 5-10 mph.
VISIBILITY: One mile in valleys in the morning gradually increasing to 3-4 miles in the afternoon.
INVERSION: Inversion lifting between 1200 and 1300. Low afternoon ventilation.

TONIGHT:

SKY/WEATHER: Heavy smoke settling in valleys.

MIN TEMP:	Valleys:	35-45°	MAX HUMIDITY:	Valleys:	45-50%
	Ridgetops:	50-55°		Mid Slopes:	30-35%
				Ridgetops:	30-35%

CHANCE OF THUNDERSTORMS: 0% **LAL:** 1

WINDS: **Valleys:** Downslope/down valley 2-4 mph developing after 2000.
Ridgetops: Southwest 4-6 mph in the evening, becoming light and variable after midnight.
TRANSPORT WIND: Light winds.
STABILITY/INVERSION: Developing inversion, poor to no ventilation through the night.

EXTENDED OUTLOOK: Monday through Friday: High pressure will sustain above normal temperatures with some lower valleys reaching the 90s Monday along with a very dry air mass remaining in place, resulting in critically low afternoon minimum RH values and poor to moderate mid-slope recoveries through Tuesday. Temperatures will begin to decrease slightly Tuesday into the mid 80s. Light west to southwest wind is expected until a weather disturbance moves into the area until Tuesday, when a more active weather pattern is possible starting midweek with increasing gusty winds.



Nearby

Observations

Weather

Send/Text Weather Observations to 208-473-9256

ASSIGNMENT LIST (ICS 204 WF)

CONTROLLED UNCLASSIFIED
INFORMATION//BASIC

1. Incident Name: DIXIE WEST ZONE	2. Operational Period: Date From: 09/05/21 Date To: 09/06/21 Time From: 0700 Time To: 0700	3. Branch Division 1 / 5 / 7 A/B/C/D/E/F/G/I
4. Operations Personnel:		Page 1 of 1 Alpha

Operations Section Chief: M. Wink	Night Ops: M. Jonsson
Branch Director:	Branch Safety:
Division/Group Supervisor:	Air Branch: M. Hill

5. Resources Assigned:	** Resources Below in Bold are 12 Hour **							
Resource Identifier	ALS	LWD	Leader	Personnel	Request #	Hours	Reporting Location	
ENG3 BTU 2161						0700-1900	MAGALIA ICP	
ENG3 BTU 2163						0700-1900	MAGALIA ICP	
ENG3 BTU 2181						0700-1900	MAGALIA ICP	
ENG3						0700-0700	MAGALIA ICP	
ENG3						0700-0700	MAGALIA ICP	
CRW						0700-0700	MAGALIA ICP	
W/T PVT E-868			TRAUMILLER, JUSTIN	2	E-868	0700-1900	MAGALIA ICP	
W/T PVT E-2067			DOWLING, OLIVER	2	E-2067	0700-0700	MAGALIA ICP	
W/T PVT E-2068			GREGGERSON, DEAN	1	E-2068	0700-0700	MAGALIA ICP	
FALM PVT O-939			MARSHALL, JOE	2	O-939	0700-1900	MAGALIA ICP	
REAF DOLAN		9/8	DOLAN, MIKE	1	O-21342	0700-1900	MAGALIA ICP	
REAF ARTERY		9/3	ARTERY, JEREMY	1	O-21310	0700-1900	MAGALIA ICP	
REAF HOFFMANN		9/17		1		0700-1900	MAGALIA ICP	

6. Work Assignments:
 Improve and hold control lines.
 Fall hazard trees and trees that will threaten control lines.

7. Special Instructions:
 Sensitive avoidance areas are flagged in red and black striped flagging. Work with Resource Advisors (REAF) on identification and protection.

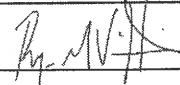
8. Communications

Name	Ch	Function	Rx Freq	Rx Tone	Tx Freq	Tx Tone	Notes
BTU CMD	6	COMMAND	154.4150	T2 - 123.0	159.0000	T4 - 136.5	USE FOR BRANCH 1/5/7 & BUTTE FSR *ONLY*
CDF T28	7	TACTICAL	151.1825	T16 - 192.8	151.1825	T16 - 192.8	
CDF T18	14	A/G TACTICAL	159.3450	T16 - 192.8	159.3450	T16 - 192.8	A/G TACTICAL - WEST ZONE
CALCORD	15	MEDICAL	156.0750N	T6 - 156.7	156.0750N	T6 - 156.7	
AIRGUARD	16	AIRGUARD	168.6250	000.0	168.6250	T1 - 110.9	EMERGENCY ONLY

9. Prepared by: Name:	R. Villarino	RESL	Signature:
ICS 204	Date/Time: 9/4/2021	2200	Personnel Count: 10

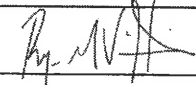
ASSIGNMENT LIST (ICS 204 WF)

CONTROLLED UNCLASSIFIED
INFORMATION/BASIC

1. Incident Name:		2. Operational Period:				3. Branch		Group	
DIXIE WEST ZONE		Date From: 09/05/21 Date To: 09/06/21 Time From: 0700 Time To: 0700				1 / 5 / 7		Butte FSR	
4. Operations Personnel:						Page 1 of 4			
Operations Section Chief: M. Wink			Night Ops: M. Jonsson						
Branch Director:			Branch Safety:						
Division/Group Supervisor: D. Derby (Day)			Air Branch: M. Hill						
5. Resources Assigned:		** Resources Below in Bold are 12 Hour **							
Resource Identifier	ALS	LWD	Leader	Personnel	Request #	Hours	Reporting Location		
ENG6 BTC E621						0700-1900	MAGALIA ICP		
ENG6 BTC E664						0700-1900	MAGALIA ICP		
DOZ PVT E-809			ULSH, DALE	1	E-809	0700-1900	MAGALIA ICP		
DOZ PVT E-1315						0700-1900	MAGALIA ICP		
DOZ PVT E-1316						0700-1900	MAGALIA ICP		
DOZ PVT E-1318			CARSON, CARY	1	E-1318	0700-1900	MAGALIA ICP		
DOZ PVT E-1320			WURLITZER, GEORGE	1	E-1320	0700-1900	MAGALIA ICP		
DOZ PVT E-1333			WADDINGTON, CASEY	1	E-1333	0700-1900	MAGALIA ICP		
W/T PVT E-44			DUNLAP, JACOB	1	E-44	0700-1900	MAGALIA ICP		
W/T PVT E-63			RANEY, MIKE	1	E-63	0700-1900	MAGALIA ICP		
W/T PVT E-64			KOEHLER, RYAN	1	E-64	0700-1900	MAGALIA ICP		
W/T PVT E-65			KOEHLER, RYAN	1	E-65	0700-1900	MAGALIA ICP		
W/T PVT E-81			DUDUSICK, KEITH	2	E-81	0700-1900	MAGALIA ICP		
W/T PVT E-111			ELLE	2	E-111	0700-1900	MAGALIA ICP		
W/T PVT E-112			KEVIN	1	E-112	0700-1900	MAGALIA ICP		
W/T PVT E-297			GARR, TODD	2	E-297	0700-1900	MAGALIA ICP		
W/T PVT E-723			GALLETTI, MARK	2	E-723	0700-1900	MAGALIA ICP		
W/T PVT E-724			McCONNELL, JOSHUA	1	E-724	0700-1900	MAGALIA ICP		
6. Work Assignments:									
Implement fire suppression repair plan.									
7. Special Instructions:									
Sensitive avoidance areas are flagged in red and black striped flagging. Work with Resource Advisors (REAF) on identification and protection.									
8. Communications									
Name	Ch	Function	Rx Freq	Rx Tone	Tx Freq	Tx Tone	Notes		
BTU CMD	6	COMMAND	154.4150	T2 - 123.0	159.0000	T4 - 136.5	USE FOR BRANCH 1/5/7 & BUTTE FSR *ONLY*		
VTAC12	11	TACTICAL	154.4525	T6 - 156.7	154.4525	T6 - 156.7			
CDF T18	14	A/G TACTICAL	159.3450	T16 - 192.8	159.3450	T16 - 192.8	A/G TACTICAL - WEST ZONE		
CALCORD	15	MEDICAL	156.0750N	T6 - 156.7	156.0750N	T6 - 156.7			
AIRGUARD	16	AIRGUARD	168.6250	000.0	168.6250	T1 - 110.9	EMERGENCY ONLY		
9. Prepared by: Name:			R. Villarino		RESL		Signature: 		
ICS 204		Date/Time: 9/4/2021		2200		Personnel Count: 18			

ASSIGNMENT LIST (ICS 204 WF)

CONTROLLED UNCLASSIFIED
INFORMATION//BASIC

1. Incident Name: DIXIE WEST ZONE		2. Operational Period: Date From: 09/05/21 Date To: 09/06/21 Time From: 0700 Time To: 0700				3. Branch 1 / 5 / 7		Group Butte FSR	
4. Operations Personnel:								Page 2 of 4	
Operations Section Chief: M. Wink				Night Ops: M. Jonsson					
Branch Director:				Branch Safety:					
Division/Group Supervisor: D. Derby (Day)				Air Branch: M. Hill					
5. Resources Assigned:		** Resources Below in Bold are 12 Hour **							
Resource Identifier	ALS	LWD	Leader	Personnel	Request #	Hours	Reporting Location		
W/T PVT E-726			TAYLOR, TOM	1	E-726	0700-1900	MAGALIA ICP		
W/T PVT E-874			KELSEY, JOHN	1	E-874	0700-1900	MAGALIA ICP		
W/T PVT E-1358			LOGUE, RICKY	1	E-1358	0700-1900	MAGALIA ICP		
W/T PVT E-1366			CHRISTIANSEN, GREG	1	E-1366	0700-1900	MAGALIA ICP		
W/T PVT E-1373			VASQUEZ, MIGUEL	1	E-1373	0700-1900	MAGALIA ICP		
W/T PVT E-1389			MONTELLI, JON	1	E-1389	0700-1900	MAGALIA ICP		
W/T PVT E-1532			WHARFF, STEVE	1	E-1532	0700-1900	MAGALIA ICP		
EXC PVT E-226			WUNSCH, ALEX	1	E-226	0700-1900	MAGALIA ICP		
EXC PVT E-227			KOEHLER, RYAN	1	E-227	0700-1900	MAGALIA ICP		
EXC PVT E-330			MURDOCK, MIKE	2	E-330	0700-1900	MAGALIA ICP		
EXC PVT E-776			FIELDS, BRUCE	1	E-776	0700-1900	MAGALIA ICP		
EXC PVT E-777			MOORE, SONNY	1	E-777	0700-1900	MAGALIA ICP		
EXC PVT E-807			WRIGHT, JEREMY	1	E-807	0700-1900	MAGALIA ICP		
EXC PVT E-846			WURLITZER, GEORGE	1	E-846	0700-1900	MAGALIA ICP		
EXC PVT E-885			DUNLOP, DAVID	1	E-885	0700-1900	MAGALIA ICP		
EXC PVT E-1440			MCLERAN, RICHARD	1	E-1440	0700-1900	MAGALIA ICP		
EXC PVT E-1966			CATTANEO, ANGELO	1	E-1966	0700-1900	MAGALIA ICP		
EXC PVT E-1968			CHACE, DEANE	1	E-1968	0700-1900	MAGALIA ICP		
6. Work Assignments: Implement fire suppression repair plan.									
7. Special Instructions: Sensitive avoidance areas are flagged in red and black striped flagging. Work with Resource Advisors (REAF) on identification and protection.									
8. Communications									
Name	Ch	Function	Rx Freq	Rx Tone	Tx Freq	Tx Tone	Notes		
BTU CMD	6	COMMAND	154.4150	T2 - 123.0	159.0000	T4 - 136.5	USE FOR BRANCH 1/5/7 & BUTTE FSR *ONLY*		
VTAC12	11	TACTICAL	154.4525	T6 - 156.7	154.4525	T6 - 156.7			
CDF T18	14	A/G TACTICAL	159.3450	T16 - 192.8	159.3450	T16 - 192.8	A/G TACTICAL- WEST ZONE		
CALCORD	15	MEDICAL	156.0750N	T6 - 156.7	156.0750N	T6 - 156.7			
AIRGUARD	16	AIRGUARD	168.6250	000.0	168.6250	T1 - 110.9	EMERGENCY ONLY		
9. Prepared by: Name:		R. Villarino		RESL		Signature: 			
ICS 204		Date/Time: 9/4/2021		2200		Personnel Count: 19			

ASSIGNMENT LIST (ICS 204 WF)

CONTROLLED UNCLASSIFIED
INFORMATION//BASIC

1. Incident Name: DIXIE WEST ZONE	2. Operational Period: Date From: 09/05/21 Date To: 09/06/21 Time From: 0700 Time To: 0700	3. Branch Group 1 / 5 / 7 Butte FSR
--	---	--

Page 3 of 4

4. Operations Personnel:	
Operations Section Chief: M. Wink	Night Ops: M. Jonsson
Branch Director:	Branch Safety:
Division/Group Supervisor: D. Derby (Day)	Air Branch: M. Hill

5. Resources Assigned:		** Resources Below in Bold are 12 Hour **					
Resource Identifier	ALS	LWD	Leader	Personnel	Request #	Hours	Reporting Location
EXC PVT E-1970			BROWN, ERIC	1	E-1970	0700-1900	MAGALIA ICP
MAS PVT E-223			WURLITZER, GEORGE	1	E-223	0700-1900	MAGALIA ICP
MAS PVT E-224			WURLITZER, GEORGE	1	E-224	0700-1900	MAGALIA ICP
MAS PVT E-313			KOEHLER, RYAN	1	E-313	0700-1900	MAGALIA ICP
MAS PVT E-774			GROTEGUTH, L	1	E-774	0700-1900	MAGALIA ICP
MAS PVT E-853			GRIDLEY, DANIEL	1	E-853	0700-1900	MAGALIA ICP
MAS PVT E-2100			HAYLOR, HAYDEN	1	E-2100	0700-1900	MAGALIA ICP
MAS PVT E-2104 <i>Susanville Staging</i>			KLINGELE, CHRIS	1	E-2104	0700-1900	MAGALIA ICP
GRD PVT E-234			WALBERG, BUD	1	E-234	0700-1900	MAGALIA ICP
GRD PVT E-235			RICHARD, JANCE	1	E-235	0700-1900	MAGALIA ICP
GRD PVT E-236			BROWN, ERIC	2	E-236	0700-1900	MAGALIA ICP
GRD PVT E-800			ULSH, DALE	1	E-800	0700-1900	MAGALIA ICP
GRD PVT E-1956 <i>Demob</i>			HOWARD, TRYSTAN	1	E-1956	0700-1900	MAGALIA ICP
GRD PVT E-2168			STUGELMEYER, JOHN	1	E-2168	0700-1900	MAGALIA ICP
SKD PVT E-1230			HALL, LUKE	1	E-1230	0700-1900	MAGALIA ICP
FSRS COLLINS			COLLINS, TIM	1	O-51	0700-1900	MAGALIA ICP
FSRS CORREA (T)			CORREA, MELISSA	1	O-828	0700-1900	MAGALIA ICP
FSRS COONAN (T)			COONAN, NOAH	1		0700-1900	MAGALIA ICP

6. Work Assignments:
Implement fire suppression repair plan.

7. Special Instructions:
Sensitive avoidance areas are flagged in red and black striped flagging. Work with Resource Advisors (REAF) on identification and protection.

8. Communications

Name	Ch	Function	Rx Freq	Rx Tone	Tx Freq	Tx Tone	Notes
BTU CMD	6	COMMAND	154.4150	T2 - 123.0	159.0000	T4 - 136.5	USE FOR BRANCH 1/5/7 & BUTTE FSR *ONLY*
VTAC12	11	TACTICAL	154.4525	T6 - 156.7	154.4525	T6 - 156.7	
CDF T18	14	A/G TACTICAL	159.3450	T16 - 192.8	159.3450	T16 - 192.8	A/G TACTICAL - WEST ZONE
CALCORD	15	MEDICAL	156.0750N	T6 - 156.7	156.0750N	T6 - 156.7	
AIRGUARD	16	AIRGUARD	168.6250	000.0	168.6250	T1 - 110.9	EMERGENCY ONLY

9. Prepared by: Name:	R. Villarino	RESL	Signature:
ICS 204	Date/Time: 9/4/2021	2200	Personnel Count: 19

ASSIGNMENT LIST (ICS 204 WF)

CONTROLLED UNCLASSIFIED
INFORMATION/BASIC

1. Incident Name: DIXIE WEST ZONE	2. Operational Period: Date From: 09/05/21 Date To: 09/06/21 Time From: 0700 Time To: 0700	3. Branch 9	Division J/K
--	---	------------------------------	-------------------------------

Page 1 of 1 **Juliet**

4. Operations Personnel:	
Operations Section Chief: M. Wink	Night Ops: M. Jonsson
Branch Director: E. Smith (Day)	Branch Safety:
Division/Group Supervisor: D. Ybarra	Air Branch: M. Hill

5. Resources Assigned:		** Resources Below in Bold are 12 Hour **					
Resource Identifier	ALS	LWD	Leader	Personnel	Request #	Hours	Reporting Location
STC MEU 9112C			CHESNICK, ROBERT	17	E-117	0700-0700	DP 26
CRW ISHI 2			SISNEROS, JASON	15	C-434	0700-0700	DP 26
CRW						0700-0700	DP 26
DOZ PVT E-460			BARAJAS, CONNOR	2	E-460	0700-0700	DP 26
DOZ PVT E-604			HANNA, TAYLOR	2	E-604	0700-0700	DP 26
DOZ PVT E-614			VAN-PELT, KYLE	1	E-614	0700-0700	DP 26
W/T PVT E-634			ZUURBIER, TOM	2	E-634	0700-1900	DP 26
W/T PVT E-871			HORN, RANDY	2	E-871	0700-0700	DP 26
W/T PVT E-962			HILL, CHARLES	2	E-962	0700-0700	DP 26
W/T PVT E-1359			TROEDEL, BRYAN	1	E-1359	0700-1900	DP 26
W/T PVT E-1369			ROGERS, BUDDY	1	E-1369	0700-1900	DP 26
W/T PVT E-2069			LOGUE, RICKY	1	E-2069	0700-1900	DP 26
EXC PVT E-1908			MADDOX, JARED	1		0700-1900	DP 26
FELB						0700-1900	DP 26
HEQB						0700-0700	DP 26
FALM PVT O-660			MCCONNELL, ROBERT	2	O-660	0700-1900	DP 26
FALM PVT O-1596			KUNY, DANNY	2	O-1596	0700-1900	DP 26
REAF OLIN		9/9	OLIN, GRANT	1	O-20758	0700-1900	DP 26
REAF GERN		9/8	GERN, HANNAH	1	O-21494	0700-1900	DP 26

6. Work Assignments: *READ WOODS*
Mop up 300' in from control line. *REAF westfall*
Pull hose lays where no longer required. *REAF Dolan*
Fall hazard trees and trees that will threaten control lines.

7. Special Instructions:
Fallers work Red Bluff Rd to DP 20 / Warner Valley.
All line supervisors check in with the cost share team at the end of your shift
Sensitive avoidance areas are flagged in red and black striped flagging. Work with Resource Advisors (REAF) on identification and protection.

8. Communications							
Name	Ch	Function	Rx Freq	Rx Tone	Tx Freq	Tx Tone	Notes
NIFC C31	3	COMMAND	173.0250	000.0	163.8250	T2 - 123.0	MT LASSEN. ALL REPEATERS LINKED BACK TO ICP
CDF T29	8	TACTICAL	151.3475	T16 - 192.8	151.3475	T16 - 192.8	
CDF T18	14	A/G TACTICAL	159.3450	T16 - 192.8	159.3450	T16 - 192.8	A/G TACTICAL- WEST ZONE
CALCORD	15	MEDICAL	156.0750N	T6 - 156.7	156.0750N	T6 - 156.7	
AIRGUARD	16	AIRGUARD	168.6250	000.0	168.6250	T1 - 110.9	EMERGENCY ONLY

9. Prepared by: Name: R. Villarino	RESL	Signature:	Personnel Count: 52
---	------	------------	---------------------

ASSIGNMENT LIST (ICS 204 WF)

CONTROLLED UNCLASSIFIED
INFORMATION/BASIC

1. Incident Name: DIXIE WEST ZONE	2. Operational Period: Date From: 09/05/21 Date To: 09/06/21 Time From: 0700 Time To: 0700	3. Branch 9	Division L
--	---	------------------------------	-----------------------------

4. Operations Personnel:		Page 1 of 1	Lima
Operations Section Chief: M. Wink	Night Ops: M. Jonsson		
Branch Director: E. Smith (Day)	Branch Safety:		
Division/Group Supervisor: B. Riley	Air Branch: M. Hill		

5. Resources Assigned:		** Resources Below in Bold are 12 Hour **					
Resource Identifier	ALS	LWD	Leader	Personnel	Request #	Hours	Reporting Location
STC HUU 9120C			MCFARREN, MICHAEL	18	E-1044	0700-0700	DP 26
CRW						0700-0700	DP 26
CRW						0700-0700	DP 26
DOZ PVT E-968			DOUD, BRETT	2	E-968	0700-0700	DP 26
DOZ PVT E-1017			HOLTZ, RICHARD	2	E-1017	0700-0700	DP 26
DOZ PVT E-1018			JOHNSON, DAN	2	E-1018	0700-0700	DP 26
W/T PVT E-1059			BENDALL, JOHN	2	E-1059	0700-1900	DP 26
W/T PVT E-1362			ANDERSON, DARREN	1	E-1362	0700-1900	DP 26
W/T PVT E-1365			KOEHLER, BILL	1	E-1365	0700-1900	DP 26
W/T PVT E-2066			WISE, NATE	1	E-2066	0700-1900	DP 26
W/T PVT E-2071			GLAGE, JOHN	1	E-2071	0700-1900	DP 26
W/T PVT E-2073			MOORE, MARTIN	1	E-2073	0700-1900	DP 26
EXC PVT E-2116			SMITH, ANTHONY	1	E-2116	0700-1900	DP 26
HEQB						0700-0700	DP 26
W/T E-300 (was unass)							
W/T E-301 (was unass)							
GRD E-1960 ← Shasta Cont.							

6. Work Assignments:
Mop up 300' in from control line.
Pull hose lays where no longer required.
Backhaul trash and excess supplies.

7. Special Instructions:
****DO NOT TAKE WATER OUT OF HYDRANTS IN THE MILL CREEK SUBDIVISION.****
Potable water tenders needed to replenish water taken from tamarack 30,000 gallon tank that supplies the Mill Creek housing.
All line supervisors check in with the cost share team at the end of your shift
Approval needed before dozers enter Lassen National Park.
Sensitive avoidance areas are flagged in red and black striped flagging. Work with Resource Advisors (REAF) on identification and protection.

8. Communications

Name	Ch	Function	Rx Freq	Rx Tone	Tx Freq	Tx Tone	Notes
NIFC C31	3	COMMAND	173.0250	000.0	163.8250	T2 - 123.0	MT LASSEN. ALL REPEATERS LINKED BACK TO ICP
CDF T30	9	TACTICAL	151.3925	T16 - 192.8	151.3925	T16 - 192.8	
CDF T18	14	A/G TACTICAL	159.3450	T16 - 192.8	159.3450	T16 - 192.8	A/G TACTICAL- WEST ZONE
CALCORD	15	MEDICAL	156.0750N	T6 - 156.7	156.0750N	T6 - 156.7	
AIRGUARD	16	AIRGUARD	168.6250	000.0	168.6250	T1 - 110.9	EMERGENCY ONLY

9. Prepared by: Name: R. Villarino RESL Signature:

ICS 204 Date/Time: 9/4/2021 2200 Personnel Count: 32

ASSIGNMENT LIST (ICS 204 WF)

CONTROLLED UNCLASSIFIED
INFORMATION//BASIC

1. Incident Name: DIXIE WEST ZONE		2. Operational Period: Date From: 09/05/21 Date To: 09/06/21 Time From: 0700 Time To: 0700				3. Branch 13		Division N/O	
4. Operations Personnel:		Operations Section Chief: M. Wink		Night Ops: M. Jonsson		Page 1 of 1		November	
Branch Director: M. Klimek (Day), P. English (Day)(T)		Branch Safety: Dunlap (T), Ferguson (T)		Air Branch: M. Hill					
Division/Group Supervisor: R. Mitchell (Day), J. Strait (Day)(T), T. Edwards (Day) (T), J. Martinez (Night), B. Wheeler (Night)(T)-									
5. Resources Assigned:		** Resources Below in Bold are 12 Hour **							
Resource Identifier	ALS	LWD	Leader	Personnel	Request #	Hours	Reporting Location		
ENG3 WNP E-2		9/16	ALLEN, SAM	4		0700-1900	HAT CREEK SPIKE CAMP		
ENG YNP 31		9/13	R. Frietas			1900-0700	HAT CREEK SPIKE CAMP		
ENG3 GREX 932		9/8	GREGOR, RYAN	4	E-1345	0700-1900	HAT CREEK SPIKE CAMP		
ENG3 TRI STATE		9/12	NAPOLES, NICK	5	E-20442	0700-1900	HAT CREEK SPIKE CAMP		
ENG3 STONE MTN		9/7	DICKERSON, JOHN	3	E-20443	0700-1900	HAT CREEK SPIKE CAMP		
ENG3 ALTERGOTT 32		9/5	ALTERGOTT, ADAM	3	E-20044	0700-1900	HAT CREEK SPIKE CAMP		
ENG6 LNP 76		9/12	TUCKER, JASON	3	E-20688	0700-1900	HAT CREEK SPIKE CAMP		
STG SBC 9322G (LG)		9/20	GILLIAN, TYLER	43	C-109	0700-1900	HAT CREEK SPIKE CAMP		
CRW LASSEN 1		9/14	BUCKLEY, COREY			0700-1900	HAT CREEK SPIKE CAMP		
W/T PVT E-80			LUCE, JERRY	2	E-80	0700-1900	HAT CREEK SPIKE CAMP		
W/T PVT E-1377			CORP, NOAH	1	E-1377	0700-1900	HAT CREEK SPIKE CAMP		
W/T PVT E-1382			FOUGHT, TRAVIS	1	E-1382	0700-1900	HAT CREEK SPIKE CAMP		
W/T PVT E-20095			CULP, THOMAS	1	E-20095	0700-1900	HAT CREEK SPIKE CAMP		
W/T PVT E-20373			HOLT, GREGORY	1	E-20373	0700-1900	HAT CREEK SPIKE CAMP		
TFLD FORSYTHE			FORSYTHE, C	1		0700-1900	HAT CREEK SPIKE CAMP		
REAF SELF		9/7	SELF, TYLER	1	O-21320	0700-1900	HAT CREEK SPIKE CAMP		
REAF IMMEKER		9/5	IMMEKER, DAVE	1	O-21288	0700-1900	HAT CREEK SPIKE CAMP		
REAF DRAKE		9/6	DRAKE, CEDAR	1	O-20824	0700-1900	HAT CREEK SPIKE CAMP		
REAF GOFF		9/9	GOFF, GABE	1	O-21492	0700-1900	HAT CREEK SPIKE CAMP		
ARCH OSTER		9/11	OSTER, MARY	1	O-21410	0700-1900	HAT CREEK SPIKE CAMP		
6. Work Assignments:		<p style="text-align: center;"><i>ENG 6 E-20445 KNY601 (new)</i></p> <p>Mop up 100 feet in from control lines.</p> <p>Backhaul trash and excess supplies. <i>TFLD Martinez (new)</i></p> <p>Fall hazard trees and trees that will threaten control lines.</p> <p>Hold fire within established control lines.</p>							
7. Special Instructions: **EMPF Potts on a 24 hour shift.**		<p>Utilize rubber track equipment on roads inside the Park where practicable.</p> <p>Sensitive avoidance areas are flagged in red and black striped flagging. Work with Resource Advisors (REAF) on identification and protection.</p> <p>REAFs and ARCHs listed on Div N are assigned to Divs N/O/P.</p>							
8. Communications									
Name	Ch	Function	Rx Freq	Rx Tone	Tx Freq	Tx Tone	Notes		
NIFC C31	3	COMMAND	173.0250	000.0	163.8250	T2 - 123.0	MT LASSEN. ALL REPEATERS LINKED BACK TO ICP		
CDF T31	10	TACTICAL	159.3825	T16 - 192.8	159.3825	T16 - 192.8			
CDF T18	14	A/G TACTICAL	159.3450	T16 - 192.8	159.3450	T16 - 192.8	A/G TACTICAL- WEST ZONE		
CALCORD	15	MEDICAL	156.0750N	T6 - 156.7	156.0750N	T6 - 156.7			
AIRGUARD	16	AIRGUARD	168.6250	000.0	168.6250	T1 - 110.9	EMERGENCY ONLY		
9. Prepared by: Name:		R. Villarino			RESL		Signature:		
ICS 204		Date/Time: 9/4/2021		2200		Personnel Count: 75			

ASSIGNMENT LIST (ICS 204 WF)

CONTROLLED UNCLASSIFIED
INFORMATION/BASIC

1. Incident Name: DIXIE WEST ZONE		2. Operational Period: Date From: 09/05/21 Date To: 09/06/21 Time From: 0700 Time To: 0700				3. Branch Division 13 P	
						Page 1 of 1 Papa	
4. Operations Personnel:							
Operations Section Chief: M. Wink		Night Ops: M. Jonsson		Branch Director: M. Klimek (Day), P. English (Day)(T)		Branch Safety: Dunlap (T), Ferguson (T)	
Division/Group Supervisor: Z. Palmer (Day), B. Hilderbrand (Day)(T), O. Genao (Night)		Air Branch: M. Hill					
5. Resources Assigned: ** Resources Below in Bold are 12 Hour **							
Resource Identifier	ALS	LWD	Leader	Personnel	Request #	Hours	Reporting Location
ENG3 LNF 312		9/11	MILLER, SHAUN	5	E-20439	0700-1900	HAT CREEK SPIKE CAMP
ENG3 TNF 333			BAKKER, BILL	5	E-21094	0700-1900	HAT CREEK SPIKE CAMP
ENG3 NOD 8337			GOUVEIA, JEFF	5	E-21267	0700-1900	HAT CREEK SPIKE CAMP
ENG4 BLAZE RUNNER 18			CARLSON, AARON	4	E-21177	0700-1900	HAT CREEK SPIKE CAMP
T/F UTNWS 2	9/9	9/8	LOVE, RYAN	21	E-1891	0700-1900	HAT CREEK SPIKE CAMP
STG			CALL, MATT			0700-0700	HAT CREEK SPIKE CAMP
CRW LNF 3		9/3	FITZGERALD, JAKE			0700-1900	HAT CREEK SPIKE CAMP
WFM LNF EAGLE LAKE O-21231						0700-1900	HAT CREEK SPIKE CAMP
DOZ PVT E-630			MOORE, DYLAN	2	E-630	0700-0700	HAT CREEK SPIKE CAMP
DOZ PVT E-655			DAVIS, LEE	2	E-655	0700-0700	HAT CREEK SPIKE CAMP
W/T PVT E-267			SEABOURN, MIKE	1	E-267	0700-1900	HAT CREEK SPIKE CAMP
W/T PVT E-865			KITCHENS, RYAN	1	E-865	0700-1900	HAT CREEK SPIKE CAMP
W/T PVT E-1394			EVANS, LEWIS	1	E-1394	0700-1900	HAT CREEK SPIKE CAMP
PROS PVT E-1598			CROOK, SHAUN	1	E-1598	0700-1900	HAT CREEK SPIKE CAMP
HEQB WEBER			WEBER, DAVID	1	O-1061	0700-1900	HAT CREEK SPIKE CAMP
REAF HIEDE		9/9		1		0700-1900	HAT CREEK SPIKE CAMP
REAF WESTPHAL		9/7	WESTPHAL, MICHAEL	1	O-21511	0700-1900	HAT CREEK SPIKE CAMP
REAF WOODS		9/6	WOODS, BONNIE	1	O-21351	0700-1900	HAT CREEK SPIKE CAMP
REAF THOMAS		9/8	THOMAS, LOWELL	1	O-21634	0700-1900	HAT CREEK SPIKE CAMP
6. Work Assignments:							
Mop up 100 feet in from control lines.		ENG3 LNF 314					
Improve and hold control lines.		HEQB Costello					
Fall hazard trees and trees that will threaten control lines.		TFLD Genao					
Prepare for firing operations.							
7. Special Instructions: **EMPF Potts on a 24 hour shift.**							
Use MIST tactics along trail track where practicle and follow REAF guidance on line placement.							
REAFs and ARCHs listed on Div N are assigned to Divs N/O/P.							
8. Communications							
Name	Ch	Function	Rx Freq	Rx Tone	Tx Freq	Tx Tone	Notes
NIFC C57	5	COMMAND	173.7500	000.0	167.5500	T2 - 123.0	W. PROSPECT PK. ALL REPEATERS LINK BACK TO ICP.
VTAC13	12	TACTICAL	158.7375	T6 - 156.7	158.7375	T6 - 156.7	
CDF T18	14	A/G TACTICAL	159.3450	T16 - 192.8	159.3450	T16 - 192.8	A/G TACTICAL- WEST ZONE
CALCORD	15	MEDICAL	156.0750N	T6 - 156.7	156.0750N	T6 - 156.7	
AIRGUARD	16	AIRGUARD	168.6250	000.0	168.6250	T1 - 110.9	EMERGENCY ONLY
9. Prepared by: Name: R. Villarino RESL							
						Signature:	
ICS 204		Date/Time: 9/4/2021 2200				Personnel Count: 52	

ASSIGNMENT LIST (ICS 204 WF)

CONTROLLED UNCLASSIFIED
INFORMATION//BASIC

1. Incident Name: DIXIE WEST ZONE	2. Operational Period: Date From: 09/05/21 Date To: 09/06/21 Time From: 0700 Time To: 0700	3. Branch Shasta Contingency Page 1 of 2
--	---	--

4. Operations Personnel:	
Operations Section Chief: M. Wink	Night Ops: M. Jonsson
Branch Director: A. Stornetta (Day)	Branch Safety:
Division/Group Supervisor:	Air Branch: M. Hill

5. Resources Assigned:		** Resources Below in Bold are 12 Hour **						
Resource Identifier	ALS	LWD	Leader	Personnel	Request #	Hours	Reporting Location	
ENG6 FBDX BRUSH 20			ALDRICH, DUSTIN	5	E-2013	0700-1900	DP 296	
W/T PVT E-48			FUNES, ANTHONY	1	E-48	0700-1900	DP 296	
W/T PVT E-265			GREG SIMERAL	2	E-265	0700-1900	DP 296	
W/T PVT E-266			ANDERSON, JEFF	1	E-266	0700-1900	DP 296	
W/T PVT E-276			WHARFF, ALAN	1	E-276	0700-1900	DP 296	
W/T PVT E-960			WOOTEN, BILLY	2	E-960	0700-0700	DP 296	
W/T PVT E-1057			LUCE, PAUL	2	E-1057	0700-1900	DP 296	
W/T PVT E-1058			BENEGAS, JOSE	2	E-1058	0700-1900	DP 296	
W/T PVT E-1181			SHULTS, JUSTIN	1	E-1181	0700-1900	DP 296	
W/T PVT E-1372			REDRICKSON, CAMERO	1	E-1372	0700-1900	DP 296	
W/T PVT E-1375			RAMSEY, RON	1	E-1375	0700-1900	DP 296	
W/T PVT E-1388			JONES, ED	1	E-1388	0700-1900	DP 296	
MAS PVT E-54			HERTZG, JOHN	1	E-54	0700-1900	DP 296	
MAS PVT E-55				1	E-55	0700-1900	DP 296	
MAS PVT E-222			WURLITZER, GEORGE	1	E-222	0700-1900	DP 296	
MAS PVT E-240			HOLT, KELLY	1	E-240	0700-1900	DP 296	
MAS PVT E-279			POTTER, GREG	1	E-279	0700-1900	DP 296	
MAS PVT E-316			LAWLESS, GARY	1	E-316	0700-1900	DP 296	

6. Work Assignments:
 Prepare to construct secondary control lines.
 Fall hazard trees and trees that will threaten control lines.
 Widen and improve existing control lines from Old Station to Twin Bridges Rd.

GRD E-1177 ← Lassen Cont
 SKD E-1183 ← Lassen Div

7. Special Instructions:
 Maintain a minimum of 15' from the PCT while constructing contingency line.
 Use MIST tactics when able. Avoid arch sites and private water systems.

8. Communications							
Name	Ch	Function	Rx Freq	Rx Tone	Tx Freq	Tx Tone	Notes
NIFC C57	5	COMMAND	173.7500	000.0	167.5500	T2 - 123.0	W. PROSPECT PK. ALL REPEATERS LINK BACK TO ICP.
CDF T31	10	TACTICAL	159.3825	T16 - 192.8	159.3825	T16 - 192.8	
CDF T18	14	A/G TACTICAL	159.3450	T16 - 192.8	159.3450	T16 - 192.8	A/G TACTICAL- WEST ZONE
CALCORD	15	MEDICAL	156.0750N	T6 - 156.7	156.0750N	T6 - 156.7	
AIRGUARD	16	AIRGUARD	168.6250	000.0	168.6250	T1 - 110.9	EMERGENCY ONLY

9. Prepared by: Name: R. Villarino	RESL	Signature:	
ICS 204	Date/Time: 9/4/2021 2200	Personnel Count: 26	

ASSIGNMENT LIST (ICS 204 WF)

CONTROLLED UNCLASSIFIED
INFORMATION/BASIC

1. Incident Name: <p style="text-align: center; font-weight: bold;">DIXIE WEST ZONE</p>	2. Operational Period: Date From: 09/05/21 Date To: 09/06/21 Time From: 0700 Time To: 0700	3. Branch <p style="text-align: center; font-weight: bold;">Shasta Contingency</p> <p style="text-align: center;">Page 2 of 2</p>
---	---	---

4. Operations Personnel:	
Operations Section Chief: M. Wink	Night Ops: M. Jonsson
Branch Director: A. Stornetta (Day)	Branch Safety:
Division/Group Supervisor:	Air Branch: M. Hill

5. Resources Assigned:		** Resources Below in Bold are 12 Hour **					
Resource Identifier	ALS	LWD	Leader	Personnel	Request #	Hours	Reporting Location
MAS PVT E-326			KORHUNIAK, PAUL	1	E-326	0700-1900	DP 296
MAS PVT E-327			CAMPELL, MARK	1	E-327	0700-1900	DP 296
MAS PVT E-852			WURLITZER, GEORGE	1	E-852	0700-1900	DP 296
MAS PVT E-889			BYERS, CAMERON	1	E-889	0700-1900	DP 296
MAS PVT E-1224			SCHMAUS, RICK	1	E-1224	0700-1900	DP 296
MAS PVT E-1437			PAYTON, MICHELLE	1	E-1437	0700-1900	DP 296
MAS PVT E-1438			SHULTS, JUSTIN	1	E-1438	0700-1900	DP 296
MAS PVT E-1439			GARMIN, KEITH	1	E-1439	0700-1900	DP 296
MAS PVT E-1442			PEZZI, ANTHONY	1	E-1442	0700-1900	DP 296
MAS PVT E-2098			RHODES, AUSTIN	1	E-2098	0700-1900	DP 296
MAS PVT E-2099			BERGMAN, ROGER	1	E-2099	0700-1900	DP 296
GRD PVT E-1960 → DIV L			HARRIS, ARLAN	1	E-1960	0700-1900	DP 296
FEL PVT E-324			WARNER, GARY	2	E-324	0700-1900	DP 296
FEL PVT E-1120			GIBBS, WAYNE	1	E-1120	0700-1900	DP 296
SKD PVT E-1182			TAYLOR, WES	1	E-1182	0700-1900	DP 296
SKD PVT E-1231			TAYLOR, WES	1	E-1231	0700-1900	DP 296
SKD PVT E-1232			ABERCROMBIE, CORRIE	1	E-1232	0700-1900	DP 296
HEQB MINER			MINER, ROBERT	1	O-1219	0700-1900	DP 296

6. Work Assignments:
 Prepare to construct secondary control lines.
 Fall hazard trees and trees that will threaten control lines.
 Widen and improve existing control lines from Old Station to Twin Bridges Rd.

7. Special Instructions:
 Maintain a minimum of 15' from the PCT while constructing contingency line.
 Use MIST tactics when able. Avoid arch sites and private water systems.

8. Communications							
Name	Ch	Function	Rx Freq	Rx Tone	Tx Freq	Tx Tone	Notes
NIFC C57	5	COMMAND	173.7500	000.0	167.5500	T2 - 123.0	W. PROSPECT PK. ALL REPEATERS LINK BACK TO ICP.
CDF T31	10	TACTICAL	159.3825	T16 - 192.8	159.3825	T16 - 192.8	
CDF T18	14	A/G TACTICAL	159.3450	T16 - 192.8	159.3450	T16 - 192.8	A/G TACTICAL - WEST ZONE
CALCORD	15	MEDICAL	156.0750N	T6 - 156.7	156.0750N	T6 - 156.7	
AIRGUARD	16	AIRGUARD	168.6250	000.0	168.6250	T1 - 110.9	EMERGENCY ONLY

9. Prepared by: Name: R. Villarino	RESL	Signature:
ICS 204	Date/Time: 9/4/2021 2200	Personnel Count: 19

ASSIGNMENT LIST (ICS 204 WF)

CONTROLLED UNCLASSIFIED
INFORMATION//BASIC

1. Incident Name: DIXIE WEST ZONE	2. Operational Period: Date From: 09/05/21 Date To: 09/06/21 Time From: 0700 Time To: 0700	3. Branch Division 16 Q Page 1 of 3 Quebec
--	---	---

4. Operations Personnel:	
Operations Section Chief: M. Wink	Night Ops: M. Jonsson
Branch Director: J. Felix	Branch Safety: Holloway, Grogan (T)
Division/Group Supervisor: J. Rivers	Air Branch: M. Hill

5. Resources Assigned:	** Resources Below in Bold are 12 Hour **						
Resource Identifier	ALS	LWD	Leader	Personnel	Request #	Hours	Reporting Location
STC LNU 9148C			ISHAM, RYAN	17	E-1624	0700-0700	DP 140 / DP 146
STC MVU 9331C			SCALES, RANDY	17	E-397	0700-0700	DP 140 / DP 146
STC MVU 9333C			SALIZZONI, JEREMY	17	E-1573	0700-0700	DP 140 / DP 146
STC XSI 3175C			EVANS, JOHN	16	E-406	0700-0700	DP 140 / DP 146
ENG3 TULX 2133			GEORGE, JEFF	4	E-2019	0700-1900	DP 140 / DP 146
ENG6 IDPVT BIG STATE		9/8	VALENTINE, PAUL	3	E-21101	0700-1900	DP 140 / DP 146
STG LMU 9220G (CDCR)		9/2	IRVINE, SCOTT	31	C-185	0700-0700	DP 140 / DP 146
STG TGU 9252G		9/11	WELCH, TONY	28	C-145	0700-0700	DP 140 / DP 146
CRW GLOBE IHC			MAXWELL, DREW	20	E-20285	0700-1900	DP 140 / DP 146
DOZ PVT E-590			MARANA, LUCAS	2	E-590	0700-0700	DP 140 / DP 146
DOZ PVT E-709			TAYLOR, JUAN	2	E-709	0700-0700	DP 140 / DP 146
DOZ PVT E-980			WISEMAN, ERWIN	2	E-980	0700-0700	DP 140 / DP 146
DOZ PVT E-981			RAMIREZ, ERAN	2	E-981	0700-0700	DP 140 / DP 146
DOZ PVT E-988			GILL, LEVI	2	E-988	0700-0700	DP 140 / DP 146
DOZ PVT E-1076			HUMPHREY, KEVIN	2	E-1076	0700-0700	DP 140 / DP 146
DOZ PVT E-1077 <i>Lassen Cont</i>			SHERICK, JEFF	2	E-1077	0700-0700	DP 140 / DP 146

6. Work Assignments:
Mop up 200 feet in from control lines.
Construct control lines from Bogards Buttes to Highway 144.
Fall hazard trees and trees that will threaten control lines.

7. Special Instructions: **EMPF McCauley and EMTF Good on a 24 hour shift.**
All line supervisors check in with the cost share team at the end of your shift
Sensitive avoidance areas are flagged in red and black striped flagging. Work with Resource Advisors (REAF) on identification and protection.
Patrol the Division for spot fires over identified control lines. Maintain roads in the Division.

8. Communications							
Name	Ch	Function	Rx Freq	Rx Tone	Tx Freq	Tx Tone	Notes
NIFC C99	B.6	COMMAND	170.1375	000.0	165.5000	T2 - 123.0	W. PROSPECT PK. ALL REPEATERS LINK BACK TO ICP.
VFIRE 25	10	TACTICAL	154.2875N	T6 - 156.7	154.2875N	T6 - 156.7	
CDF T18	14	A/G TACTICAL	159.3450	T16 - 192.8	159.3450	T16 - 192.8	A/G TACTICAL- WEST ZONE
CALCORD	15	MEDICAL	156.0750N	T6 - 156.7	156.0750N	T6 - 156.7	
AIRGUARD	16	AIRGUARD	168.6250	000.0	168.6250	T1 - 110.9	EMERGENCY ONLY

9. Prepared by: Name: R. Villarino	RESL	Signature:
ICS 204	Date/Time: 9/4/2021 2200	Personnel Count: 167

ASSIGNMENT LIST (ICS 204 WF)

CONTROLLED UNCLASSIFIED
INFORMATION//BASIC

1. Incident Name: DIXIE WEST ZONE	2. Operational Period: Date From: 09/05/21 Date To: 09/06/21 Time From: 0700 Time To: 0700	3. Branch Division 16 Q
4. Operations Personnel:		Page 2 of 3 Quebec

Operations Section Chief: M. Wink	Night Ops: M. Jonsson
Branch Director: J. Felix	Branch Safety: Holloway, Grogan (T)
Division/Group Supervisor: J. Rivers	Air Branch: M. Hill

5. Resources Assigned:		** Resources Below in Bold are 12 Hour **					
Resource Identifier	ALS	LWD	Leader	Personnel	Request #	Hours	Reporting Location
DOZ PVT E-1081			DONALDSON, JUSTIN	2	E-1081	0700-0700	DP 140 / DP 146
DOZ PVT E-1084			HARVEY, WILLIAM	2	E-1084	0700-0700	DP 140 / DP 146
DOZ PVT E-1087			WELLS, TYLER	2	E-1087	0700-1900	DP 140 / DP 146
DOZ PVT E-1090 <i>Lesson Cont</i>			PERRY, BRETT	2	E-1090	0700-0700	DP 140 / DP 146
DOZ PVT E-1321			SLOTTE, JESSIE	2	E-1321	0700-0700	DP 140 / DP 146
DOZ PVT E-1430			RUBINI, NATHAN	3	E-1430	0700-0700	DP 140 / DP 146
W/T PVT E-45			BECKER, CLARK	2	E-45	0700-1900	DP 140 / DP 146
W/T PVT E-509			HUNTSMAN, JOHN	2	E-509	0700-1900	DP 140 / DP 146
W/T PVT E-638			DOLER, DERRICK	2	E-638	0700-0700	DP 140 / DP 146
W/T PVT E-864			PARRIOTT, JARED	2	E-864	0700-0700	DP 140 / DP 146
W/T PVT E-873			BEARDSLEY, JESSIE	1	E-873	0700-1900	DP 140 / DP 146
W/T PVT E-964			JONES, ERNEST	2	E-964	0700-0700	DP 140 / DP 146
W/T PVT E-1384			MICHAELS, MATT	1	E-1384	0700-1900	DP 140 / DP 146
W/T PVT E-1393			SCHOLTEN, DUTCH	1	E-1393	0700-1900	DP 140 / DP 146
W/T PVT E-1396			WILBER, RANDY	1	E-1396	0700-1900	DP 140 / DP 146
W/T PVT E-1397			PULLEY, COLE	2	E-1397	0700-1900	DP 140 / DP 146
W/T PVT E-1480			KEENE, ROBERT	1	E-1480	0700-1900	DP 140 / DP 146
W/T PVT E-1901			KNIGHT, VICTOR	1	E-1901	0700-1900	DP 140 / DP 146

6. Work Assignments:
Mop up 200 feet in from control lines.
Construct control lines from Bogards Buttes to Highway 144.
Fall hazard trees and trees that will threaten control lines.

7. Special Instructions: **EMPF McCauley and EMTF Good on a 24 hour shift.**
All line supervisors check in with the cost share team at the end of your shift
Sensitive avoidance areas are flagged in red and black striped flagging. Work with Resource Advisors (REAF) on identification and protection.
Patrol the Division for spot fires over identified control lines. Maintain roads in the Division.

8. Communications

Name	Ch	Function	Rx Freq	Rx Tone	Tx Freq	Tx Tone	Notes
NIFC C99	B.6	COMMAND	170.1375	000.0	165.5000	T2 - 123.0	W. PROSPECT PK. ALL REPEATERS LINK BACK TO ICP.
VFIRE 25	10	TACTICAL	154.2875N	T6 - 156.7	154.2875N	T6 - 156.7	
CDF T18	14	A/G TACTICAL	159.3450	T16 - 192.8	159.3450	T16 - 192.8	A/G TACTICAL- WEST ZONE
CALCORD	15	MEDICAL	156.0750N	T6 - 156.7	156.0750N	T6 - 156.7	
AIRGUARD	16	AIRGUARD	168.6250	000.0	168.6250	T1 - 110.9	EMERGENCY ONLY

9. Prepared by: Name: R. Villarino RESL Signature:

ICS 204 Date/Time: 9/4/2021 2200 Personnel Count: 31

ASSIGNMENT LIST (ICS 204 WF)

CONTROLLED UNCLASSIFIED
INFORMATION//BASIC

1. Incident Name: DIXIE WEST ZONE		2. Operational Period: Date From: 09/05/21 Date To: 09/06/21 Time From: 0700 Time To: 0700				3. Branch 16		Division Q	
						Page 3 of 3		Quebec	
4. Operations Personnel:									
Operations Section Chief: M. Wink					Night Ops: M. Jonsson				
Branch Director: J. Felix					Branch Safety: Holloway, Grogan (T)				
Division/Group Supervisor: J. Rivers					Air Branch: M. Hill				
5. Resources Assigned:									
** Resources Below in Bold are 12 Hour **									
Resource Identifier	ALS	LWD	Leader	Personnel	Request #	Hours	Reporting Location		
W/T PVT E-1902			GOOKIN, JAKE	2	E-1902	0700-0700	DP 140 / DP 146		
W/T PVT E-20446			REILLY, GLENN	1	E-20446	0700-1900	DP 140 / DP 146		
MAS PVT E-1441			NORTH, MICHAEL	1	E-1441	0700-1900	DP 140 / DP 146		
MAS PVT E-1443			HUSKY, DAVID	1	E-1443	0700-1900	DP 140 / DP 146		
MAS PVT E-1436			SCHAPER, MICHAEL	2	E-1436	0700-1900	DP 140 / DP 146		
MAS PVT E-2105			WRIGHT, TIMOTHY	1	E-2105	0700-1900	DP 140 / DP 146		
EXC PVT E-2115			BOGGS, STEVE	1	E-2115	0700-1900	DP 140 / DP 146		
SKD PVT E-1183 → Shasta Cont.			TAYLOR, WES	1	E-1183	0700-1900	DP 140 / DP 146		
REAF FREDENHAGEN		9/13		1		0700-1900	DP 140 / DP 146		
ARCH ALLEN		9/8	ALLEN, TYLER	1	O-21033	0700-1900	DP 140 / DP 146		
ARCH SEGROVES		9/5	SEGROVES, ADAM	1	O-21044	0700-1900	DP 140 / DP 146		
DOZ E-979 ← Lassen Cont.									
DOZ E-1429 ← Lassen Cont.									
6. Work Assignments:									
Mop up 200 feet in from control lines.									
Construct control lines from Bogards Buttes to Highway 144.									
Fall hazard trees and trees that will threaten control lines.									
7. Special Instructions: **EMPF McCauley and EMTF Good on a 24 hour shift.**									
All line supervisors check in with the cost share team at the end of your shift									
Sensitive avoidance areas are flagged in red and black striped flagging. Work with Resource Advisors (REAF) on identification and protection.									
Patrol the Division for spot fires over identified control lines. Maintain roads in the Division.									
8. Communications									
Name	Ch	Function	Rx Freq	Rx Tone	Tx Freq	Tx Tone	Notes		
NIFC C99	B.6	COMMAND	170.1375	000.0	165.5000	T2 - 123.0	W. PROSPECT PK. ALL REPEATERS LINK BACK TO ICP.		
VFIRE 25	10	TACTICAL	154.2875N	T6 - 156.7	154.2875N	T6 - 156.7			
CDF T18	14	A/G TACTICAL	159.3450	T16 - 192.8	159.3450	T16 - 192.8	A/G TACTICAL - WEST ZONE		
CALCORD	15	MEDICAL	156.0750N	T6 - 156.7	156.0750N	T6 - 156.7			
AIRGUARD	16	AIRGUARD	168.6250	000.0	168.6250	T1 - 110.9	EMERGENCY ONLY		
9. Prepared by: Name: R. Villarino RESL									
Signature:									
ICS 204		Date/Time: 9/4/2021 2200		Personnel Count: 13					

ASSIGNMENT LIST (ICS 204 WF)

CONTROLLED UNCLASSIFIED
INFORMATION//BASIC

1. Incident Name: DIXIE WEST ZONE	2. Operational Period: Date From: 09/05/21 Date To: 09/06/21 Time From: 0700 Time To: 0700	3. Branch Division 16 R
4. Operations Personnel:		Page 1 of 2 Romeo

Operations Section Chief: M. Wink	Night Ops: M. Jonsson
Branch Director: J. Felix	Branch Safety: Holloway, Grogan (T)
Division/Group Supervisor: K. Swope	Air Branch: M. Hill

5. Resources Assigned:	** Resources Below in Bold are 12 Hour **					
Resource Identifier	ALS	LWD	Leader	Personnel	Request #	Hours Reporting Location
STC LNU 9145C			PETERSEN, JOE	18	E-959	0700-0700 DP 140 / DP 146
STC XSB 1521C	X		CLAYBURG, ANTHONY	22	E-288	0700-0700 DP 140 / DP 146
STC XSN 2392C	X		LACY, SEAN	19	E-842	0700-0700 DP 140 / DP 146
T/F OES 4807			SUNDRE, JOSH	15	E-1110	0700-0700 DP 140 / DP 146
ENG4 BRS 464			MARTINEZ, JAMES	3	E-2267	0700-1900 DP 140 / DP 146
ENG4 FHA 0441			TINNO, DERRICK	3	E-2268	0700-1900 DP 140 / DP 146
ENG4 GBF 69			GRASS, DAVID	3	E-2269	0700-1900 DP 140 / DP 146
ENG6 KNF 641			PAHL, ADAM	4	E-2274	0700-1900 DP 140 / DP 146
CRW MVU RAINBOW 6 (CF)		8/29	HAVEN, BRAD	15	C-208	0700-0700 DP 140 / DP 146
CRW1 C- LASSEN CREW 9			HERNANDEZ, JAKE	16	C-20082	0700-1900 DP 140 / DP 146
STL MMU 9428L			WOLFORD, KEITH	7	E-1015	0700-0700 DP 140 / DP 146
DOZ PVT E-587			RESTAD, BRUCE	4	E-587	0700-0700 DP 140 / DP 146
DOZ PVT E-1427			MEIER, JON	2	E-1427	0700-0700 DP 140 / DP 146
DOZ PVT E-1433			COOKSON, SAM	2	E-1433	0700-0700 DP 140 / DP 146
DOZ PVT E-1935			TWISSELMAN, ETHAN	2	E-1935	0700-0700 DP 140 / DP 146
DOZ PVT E-1937 <i>Demob</i>			NASOM, CAREN	2	E-1937	0700-0700 DP 140 / DP 146
W/T PVT E-115			BENSON, AL	1	E-115	0700-1900 DP 140 / DP 146

6. Work Assignments:
Mop up 300' in from control line.
Construct control lines as direct as possible.
Prepare to construct secondary control lines.
Fall hazard trees and trees that will threaten control lines.

7. Special Instructions: **EMPF McCauley and EMTF Good on a 24 hour shift.**
Continue to maintain all Forest Service roads in the Division. Tactical patrol of all control lines in the Division.
All line supervisors check in with the cost share team at the end of your shift
Sensitive avoidance areas are flagged in red and black striped flagging. Work with Resource Advisors (REAF) on identification and protection.

8. Communications

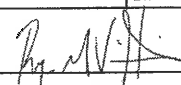
Name	Ch	Function	Rx Freq	Rx Tone	Tx Freq	Tx Tone	Notes
NIFC C89	B.3	COMMAND	173.7375	000.0	164.0125	T2 - 123.0	ANTELOPE L.O. ALL REPEATERS LINK BACK TO ICP.
NIFC T1	12	TACTICAL	168.0500N	T2 - 123.0	168.0500N	T2 - 123.0	
CDF T18	14	A/G TACTICAL	159.3450	T16 - 192.8	159.3450	T16 - 192.8	A/G TACTICAL- WEST ZONE
CALCORD	15	MEDICAL	156.0750N	T6 - 156.7	156.0750N	T6 - 156.7	
AIRGUARD	16	AIRGUARD	168.6250	000.0	168.6250	T1 - 110.9	EMERGENCY ONLY

9. Prepared by: Name: R. Villarino RESL Signature:

ICS 204 Date/Time: 9/4/2021 2200 Personnel Count: 138

ASSIGNMENT LIST (ICS 204 WF)

CONTROLLED UNCLASSIFIED
INFORMATION/BASIC

1. Incident Name: DIXIE WEST ZONE		2. Operational Period: Date From: 09/05/21 Date To: 09/06/21 Time From: 0700 Time To: 0700				3. Branch 16		Division R	
						Page 2 of 2		Romeo	
4. Operations Personnel:									
Operations Section Chief: M. Wink				Night Ops: M. Jonsson					
Branch Director: J. Felix				Branch Safety: Holloway, Grogan (T)					
Division/Group Supervisor: K. Swope				Air Branch: M. Hill					
5. Resources Assigned:		** Resources Below in Bold are 12 Hour **							
Resource Identifier	ALS	LWD	Leader	Personnel	Request #	Hours	Reporting Location		
W/T PVT E-491 <i>0/S</i>			DUNLOP, DON	1	E-491	0700-1900	DP 140 / DP 146		
W/T PVT E-1051			HEINE, STEPHEN	2	E-1051	0700-0700	DP 140 / DP 146		
W/T PVT E-1054			DUNN, BRAD	2	E-1054	0700-1900	DP 140 / DP 146		
W/T PVT E-1055			COON, MIKE	2	E-1055	0700-1900	DP 140 / DP 146		
W/T PVT E-1068			DOERING, GLEN	2	E-1068	0700-0700	DP 140 / DP 146		
W/T PVT E-1360			KITCHENS, BRIAN	2	E-1360	0700-0700	DP 140 / DP 146		
W/T PVT E-1371			LUNTEY, DENISE	2	E-1371	0700-0700	DP 140 / DP 146		
W/T PVT E-1391			KIMMICH, JACK	1	E-1391	0700-1900	DP 140 / DP 146		
W/T PVT E-1395			AVILA, CRYSTAL	2	E-1395	0700-0700	DP 140 / DP 146		
W/T PVT E-1791 <i>Demob</i>			SMITH, ANDREW	2	E-1791	0700-0700	DP 140 / DP 146		
W/T PVT E-1895					E-1895	0700-0700	DP 140 / DP 146		
W/T PVT E-1896			FREEZE, JAMES	2	E-1896	0700-0700	DP 140 / DP 146		
W/T PVT E-2074			TRAUMLIER, JOHN	2	E-2074	0700-0700	DP 140 / DP 146		
HEQB						0700-0700	DP 140 / DP 146		
FALM PVT O-935				3	O-935	0700-1900	DP 140 / DP 146		
6. Work Assignments:									
Mop up 300' in from control line.									
Construct control lines as direct as possible.									
Prepare to construct secondary control lines.									
Fall hazard trees and trees that will threaten control lines.									
7. Special Instructions: **EMPF McCauley and EMTF Good on a 24 hour shift.**									
Continue to maintain all Forest Service roads in the Division. Tactical patrol of all control lines in the Division.									
All line supervisors check in with the cost share team at the end of your shift									
Sensitive avoidance areas are flagged in red and black striped flagging. Work with Resource Advisors (REAF) on identification and protection.									
8. Communications									
Name	Ch	Function	Rx Freq	Rx Tone	Tx Freq	Tx Tone	Notes		
NIFC C89	B.3	COMMAND	173.7375	000.0	164.0125	T2 - 123.0	ANTELOPE L.O. ALL REPEATERS LINK BACK TO ICP.		
NIFC T1	12	TACTICAL	168.0500N	T2 - 123.0	168.0500N	T2 - 123.0			
CDF T18	14	A/G TACTICAL	159.3450	T16 - 192.8	159.3450	T16 - 192.8	A/G TACTICAL- WEST ZONE		
CALCORD	15	MEDICAL	156.0750N	T6 - 156.7	156.0750N	T6 - 156.7			
AIRGUARD	16	AIRGUARD	168.6250	000.0	168.6250	T1 - 110.9	EMERGENCY ONLY		
9. Prepared by: Name:		R. Villarino			RESL		Signature: 		
ICS 204		Date/Time: 9/4/2021		2200		Personnel Count: 25			

NIMS IAP

CONTROLLED UNCLASSIFIED INFORMATION/BASIC

ASSIGNMENT LIST (ICS 204 WF)

CONTROLLED UNCLASSIFIED
INFORMATION/BASIC

1. Incident Name: DIXIE WEST ZONE		2. Operational Period: Date From: 09/05/21 Date To: 09/06/21 Time From: 0700 Time To: 0700				3. Branch 16		Division S/T/U	
4. Operations Personnel:						Page 1 of 1		Sierra	
Operations Section Chief: M. Wink				Night Ops: M. Jonsson					
Branch Director: J. Felix				Branch Safety: Holloway, Grogan (T)					
Division/Group Supervisor: E. Shalhoob (STC SLU 9340C)				Air Branch: M. Hill					
5. Resources Assigned:		** Resources Below in Bold are 12 Hour **							
Resource Identifier	ALS	LWD	Leader	Personnel	Request #	Hours	Reporting Location		
STC SLU 9340C			SHALHOOB, ERIC	1516	E-1574	0700-0700	DP 140		
STH UTAH NWS 2			CATHER, DAN	17	E-1953	0700-0700	DP 140		
ENG4 BLM 2429			GRIFFIN, TAYLOR	4	E-21182	0700-1900	DP 140		
ENG6 VAIL B3			RAMIREZ, JOSUE	3	E-21096	0700-1900	DP 140		
STG						0700-0700	DP 140		
W/T PVT E-51			ALEXANDER, LUKE	2	E-51	0700-0700	DP 140		
W/T PVT E-965			GINGERICH, BRYAN	2	E-965	0700-0700	DP 140		
W/T PVT E-1374			LONG, NATHAN	2	E-1374	0700-0700	DP 140		
W/T PVT E-1385			RICHIE, ALEX	2	E-1385	0700-0700	DP 140		
EXC PVT E-2111			SNEED, BUDDY	1	E-2111	0700-1900	DP 140		
FALM PVT O-758			RILEY	1	O-758	0700-1900	DP 140		
<i>EXC E-2001 ← Lassen Cont</i>									
6. Work Assignments:									
Mop up 300' in from control line.									
Fall hazard trees and trees that will threaten control lines.									
Hold fire within established control lines.									
Perform Tactical Patrol around structures.									
7. Special Instructions: **EMPF McCauley and EMTF Good on a 24 hour shift.**									
Fall snags along Silver Lake Rd. Excavator to be used to overhaul and mop up.									
All line supervisors check in with the cost share team at the end of your shift									
Sensitive avoidance areas are flagged in red and black striped flagging. Work with Resource Advisors (REAF) on identification and protection.									
Maintain roads. Patrol the entire Division for spot fires over identified control lines.									
8. Communications									
Name	Ch	Function	Rx Freq	Rx Tone	Tx Freq	Tx Tone	Notes		
NIFC C89	B.3	COMMAND	173.7375	000.0	164.0125	T2 - 123.0	ANTELOPE L.O. ALL REPEATERS LINK BACK TO ICP.		
VFIRE 26	11	TACTICAL	154.3025N	T6 - 156.7	154.3025N	T6 - 156.7			
CDF T18	14	A/G TACTICAL	159.3450	T16 - 192.8	159.3450	T16 - 192.8	A/G TACTICAL - WEST ZONE		
CALCORD	15	MEDICAL	156.0750N	T6 - 156.7	156.0750N	T6 - 156.7			
AIRGUARD	16	AIRGUARD	168.6250	000.0	168.6250	T1 - 110.9	EMERGENCY ONLY		
9. Prepared by: Name:		R. Villarino		RESL		Signature:			
ICS 204		Date/Time: 9/4/2021		2200		Personnel Count: 49			

ASSIGNMENT LIST (ICS 204 WF)

CONTROLLED UNCLASSIFIED
INFORMATION/BASIC

1. Incident Name: DIXIE WEST ZONE	2. Operational Period: Date From: 09/05/21 Date To: 09/06/21 Time From: 0700 Time To: 0700	3. Branch Group 16 Lassen Cont.
4. Operations Personnel:		Page 1 of 3

Operations Section Chief: M. Wink	Night Ops: M. Jonsson
Branch Director: J. Felix	Branch Safety: Holloway, Grogan (T)
Division/Group Supervisor: L. Turman, C. Cooper (T)	Air Branch: M. Hill

5. Resources Assigned:	** Resources Below in Bold are 12 Hour **							
Resource Identifier	ALS	LWD	Leader	Personnel	Request #	Hours	Reporting Location	
ENG6 IDSTF 641		9/9	HINNERS, MATT	6	E-21100	0700-1900	DP 146	
DOZ PVT E-595			WATERMAN, TIM	2	E-595	0700-0700	DP 146	
DOZ PVT E-696			HOLMS, DEE	4	E-696	0700-0700	DP 146	
DOZ PVT E-821 (24hr)			CRUNKILPON, LARRY	2	E-821	0700-1900 0700	DP 146	
DOZ PVT E-979 → DIV Q			OFERRALL, TRAVIS	2	E-979	0700-0700	DP 146	
DOZ PVT E-1020			WALKER, BRISTEN	2	E-1020	0700-0700	DP 146	
DOZ PVT E-1426			GEVAS, DAVE	2	E-1426	0700-0700	DP 146	
DOZ PVT E-1429 → DIV Q (24hr)			ROBISON, KEVIN	2	E-1429	0700-1900	DP 146	
W/T PVT E-1062			BROWN, DAVE	2	E-1062	0700-0700	DP 146	
W/T PVT E-1265			MARYMEE, JACK	2	E-1265	0700-1900	DP 146	
W/T PVT E-1387			OWENS, JIM	2	E-1387	0700-0700	DP 146	
W/T PVT E-1390			KEYLON, DON	1	E-1390	0700-1900	DP 146	
W/T PVT E-1392			HUNT, JACK	2	E-1392	0700-0700	DP 146	
W/T						0700-0700	DP 146	
W/T						0700-0700	DP 146	
W/T						0700-0700	DP 146	
W/T						0700-0700	DP 146	

6. Work Assignments:
 Fall hazard trees and trees that will threaten control lines.
 Prepare indirect control line from Hwy 44 on Gray's Flat Rd to East Bogard Rd to Road 10 for possible firing operations.
 Widen and improve existing control lines.
 Maintain and improve safe road conditions.

7. Special Instructions: **EMPF McCauley and EMTF Good on a 24 hour shift.**
 Construct contingency lines as directed by the Group Supervisor.
 Patrol the entire Division for spot fires over identified control lines.

8. Communications							
Name	Ch	Function	Rx Freq	Rx Tone	Tx Freq	Tx Tone	Notes
NIFC C99	B.6	COMMAND	170.1375	000.0	165.5000	T2 - 123.0	W. PROSPECT PK. ALL REPEATERS LINK BACK TO ICP.
VFIRE 23	8	TACTICAL	154.2950N	T6 - 156.7	154.2950N	T6 - 156.7	
CDF T18	14	A/G TACTICAL	159.3450	T16 - 192.8	159.3450	T16 - 192.8	A/G TACTICAL - WEST ZONE
CALCORD	15	MEDICAL	156.0750N	T6 - 156.7	156.0750N	T6 - 156.7	
AIRGUARD	16	AIRGUARD	168.6250	000.0	168.6250	T1 - 110.9	EMERGENCY ONLY

9. Prepared by: Name:	R. Villarino	RESL	Signature:
ICS 204	Date/Time: 9/4/2021	2200	Personnel Count: 31

ASSIGNMENT LIST (ICS 204 WF)

CONTROLLED UNCLASSIFIED
INFORMATION/BASIC

1. Incident Name: DIXIE WEST ZONE	2. Operational Period: Date From: 09/05/21 Date To: 09/06/21 Time From: 0700 Time To: 0700	3. Branch Group 16 Lassen Cont.
4. Operations Personnel:		Page 2 of 3

Operations Section Chief: M. Wink	Night Ops: M. Jonsson
Branch Director: J. Felix	Branch Safety: Holloway, Grogan (T)
Division/Group Supervisor: L. Turman, C. Cooper (T)	Air Branch: M. Hill

5. Resources Assigned:		** Resources Below in Bold are 12 Hour **						
Resource Identifier	ALS	LWD	Leader	Personnel	Request #	Hours	Reporting Location	
W/T						0700-0700	DP 146	
W/T						0700-0700	DP 146	
W/T						0700-0700	DP 146	
MAS PVT E-241			HOLT, KELLY	1	E-241	0700-1900	DP 146	
MAS PVT E-278			HOFFMAN, NATHAN	1	E-278	0700-1900	DP 146	
MAS PVT E-314			CROOK, RUSSELL	1	E-314	0700-1900	DP 146	
MAS PVT E-320			BRAUN, RYAN	1	E-320	0700-1900	DP 146	
MAS PVT E-2097			LONG, DACOTA	1	E-2097	0700-1900	DP 146	
MAS PVT E-2101 → DIV SHT/U			BRITTEN, BEN	1	E-2101	0700-1900	DP 146	
MAS PVT E-2102			GILBERT, ALEX	2	E-2102	0700-1900	DP 146	
MAS PVT E-2103			HORN, BEN	1	E-2103	0700-1900	DP 146	
EXC PVT E-1907			MILLER, HAROLD	1	E-1907	0700-1900	DP 146	
EXC PVT E-2001			BERTALON, NICK	1	E-2001	0700-1900	DP 146	
EXC						0700-1900	DP 146	
EXC						0700-1900	DP 146	
GRD PVT E-1177 → Shasta Cont.			LEPAGE, JIM	2	E-1177	0700-1900	DP 146	
GRD PVT E-1903			COLEMAN, TRACY	1	E-1903	0700-1900	DP 146	
GRD PVT E-1958			MUSTIN, RICK	1	E-1958	0700-1900	DP 146	

6. Work Assignments:
 Fall hazard trees and trees that will threaten control lines.
 Prepare indirect control line from Hwy 44 on Gray's Flat Rd to East Bogard Rd to Road 10 for possible firing operations.
 Widen and improve existing control lines.
 Maintain and improve safe road conditions.

7. Special Instructions: **EMPF McCauley and EMTF Good on a 24 hour shift.**
 Construct contingency lines as directed by the Group Supervisor.
 Patrol the entire Division for spot fires over identified control lines.

8. Communications							
Name	Ch	Function	Rx Freq	Rx Tone	Tx Freq	Tx Tone	Notes
NIFC C99	B.6	COMMAND	170.1375	000.0	165.5000	T2 - 123.0	W. PROSPECT PK. ALL REPEATERS LINK BACK TO ICP.
VFIRE 23	8	TACTICAL	154.2950N	T6 - 156.7	154.2950N	T6 - 156.7	
CDF T18	14	A/G TACTICAL	159.3450	T16 - 192.8	159.3450	T16 - 192.8	A/G TACTICAL- WEST ZONE
CALCORD	15	MEDICAL	156.0750N	T6 - 156.7	156.0750N	T6 - 156.7	
AIRGUARD	16	AIRGUARD	168.6250	000.0	168.6250	T1 - 110.9	EMERGENCY ONLY

9. Prepared by: Name: R. Villarino	RESL	Signature:
ICS 204	Date/Time: 9/4/2021 2200	Personnel Count: 15

ASSIGNMENT LIST (ICS 204 WF)

CONTROLLED UNCLASSIFIED
INFORMATION//BASIC

1. Incident Name: <p style="text-align: center;">DIXIE WEST ZONE</p>	2. Operational Period: Date From: 09/05/21 Date To: 09/06/21 Time From: 0700 Time To: 0700	3. Branch Group <p style="text-align: center;">16 Lassen Cont.</p>
4. Operations Personnel:		Page 3 of 3

Operations Section Chief: M. Wink	Night Ops: M. Jonsson
Branch Director: J. Felix	Branch Safety: Holloway, Grogan (T)
Division/Group Supervisor: L. Turman, C. Cooper (T)	Air Branch: M. Hill

5. Resources Assigned:		** Resources Below in Bold are 12 Hour **						
Resource Identifier	ALS	LWD	Leader	Personnel	Request #	Hours	Reporting Location	
FEL PVT E-1116			SMITH, SHELDON	1	E-1116	0700-1900	DP 146	
FEL PVT E-1117			TAYLOR, WES		E-1117	0700-1900	DP 146	
SKD PVT E-513			CAMPBELL, MARK	1	E-513	0700-1900	DP 146	
SKD PVT E-1127			SEARL, JOHN	1	E-1127	0700-1900	DP 146	
SKD PVT E-1133			TAYLOR, WES	1	E-1133	0700-1900	DP 146	
SKD PVT E-1229			EASTMAN, WESLEY	1	E-1229	0700-1900	DP 146	
HEQB FOURTNER			FOURTNER, CHRIS	1	O-652	0700-0700	DP 146	
HEQB DVORIN			DVORIN, MARSHALL	1	O-1771	0700-0700	DP 146	
HEQB						0700-0700	DP 146	
HEQB						0700-0700	DP 146	
TFLD						0700-0700	DP 146	
TFLD						0700-0700	DP 146	
FALM PVT O-754			JENSEN, DEVIN	2	O-754	0700-1900	DP 146	
FALM PVT O-928			COFFEY, DAVID	2	O-928	0700-1900	DP 146	
DCZ E-1077 ← DIV Q								
DCZ E-1090 ← DIV Q								

6. Work Assignments:
 Fall hazard trees and trees that will threaten control lines.
 Prepare indirect control line from Hwy 44 on Gray's Flat Rd to East Bogard Rd to Road 10 for possible firing operations.
 Widen and improve existing control lines.
 Maintain and improve safe road conditions.

7. Special Instructions: **EMPF McCauley and EMTF Good on a 24 hour shift.**
 Construct contingency lines as directed by the Group Supervisor.
 Patrol the entire Division for spot fires over identified control lines.

8. Communications							
Name	Ch	Function	Rx Freq	Rx Tone	Tx Freq	Tx Tone	Notes
NIFC C99	B.6	COMMAND	170.1375	000.0	165.5000	T2 - 123.0	W. PROSPECT PK. ALL REPEATERS LINK BACK TO ICP.
VFIRE 23	8	TACTICAL	154.2950N	T6 - 156.7	154.2950N	T6 - 156.7	
CDF T18	14	A/G TACTICAL	159.3450	T16 - 192.8	159.3450	T16 - 192.8	A/G TACTICAL- WEST ZONE
CALCORD	15	MEDICAL	156.0750N	T6 - 156.7	156.0750N	T6 - 156.7	
AIRGUARD	16	AIRGUARD	168.6250	000.0	168.6250	T1 - 110.9	EMERGENCY ONLY

9. Prepared by: Name:	R. Villarino	RESL	Signature:
ICS 204	Date/Time: 9/4/2021	2200	Personnel Count: 11

ASSIGNMENT LIST (ICS 204 WF)

CONTROLLED UNCLASSIFIED
INFORMATION//BASIC

1. Incident Name: DIXIE WEST ZONE	2. Operational Period: Date From: 09/05/21 Date To: 09/06/21 Time From: 0700 Time To: 0700	3. Branch Group Westwood
4. Operations Personnel:		Page 1 of 1

Operations Section Chief: M. Wink	Night Ops: M. Jonsson
Branch Director: J. Felix	Branch Safety:
Division/Group Supervisor: C. Hunter	Air Branch: M. Hill

5. Resources Assigned:		** Resources Below in Bold are 12 Hour **						
Resource Identifier	ALS	LWD	Leader	Personnel	Request #	Hours	Reporting Location	
ENG1 WAC 7421 <i>no show</i>			WILSON, KEN	3	E-21233	0700-0700	DP-266	
ENG PVT OUTBACK E-1024			ANDERSON, DAMON	3	E-1024	0700-1900	DP-266	
ENG SD PVT E-1344			CHRISTENSEN, LANCE	3	E-1344	0700-1900	DP-266	
ENG3 TEXAS FIRE 34			EARNIE	3	E-20337	0700-1900	DP-266	
ENG IDPVT 15			OLVADA, ANTHONY	3	E-1025	0700-1900	DP-266	
ENG4 PVT 9614			THOMAS, TARYN	3	E-21180	0700-1900	DP-266	
ENG6 BRS 673			GIBBONS, JASON	3	E-21175	0700-1900	DP-266	
ENG6 FLPVT 2495			CATES, JEREMIAH	3	E-21178	0700-1900	DP-266	
ENG6 TIMBERLINE E11			POINDEXTER, BRIAN	3	E-21181	0700-1900	DP-266	
T/F OES 1809	X		SWICKARD, TROY	17	E-473	0700-0700	DP-266	
W/T OES 21			MENDEZ, PABLO	2	E-20103	0700-0700	DP-266	
W/T SAD 1931			GRAVES, MIKE	1	E-1720	0700-0700	DP-266	
W/T WAC 7531 <i>no show</i>			BORNHORST, DALE	2	E-21234	0700-0700	DP-266	
W/T PVT E-716			ROMO, GABRIEL	2	E-716	0700-0700	DP-266	
W/T PVT E-722			KUSALICH, NATHAN	2	E-722	0700-0700	DP-266	
W/T PVT E-963			LANSDALE, JASON	2	E-963	0700-0700	DP-266	
W/T PVT E-1053			SANTANA, RICHARD	2	E-1053	0700-0700	DP-266	
W/T PVT E-1364			CASE, EDWARD	1	E-1364	0700-1900	DP-266	
W/T PVT E-1378			GRANT, HANNA	1	E-1378	0700-1900	DP-266	
REAF MARTIN		9/9		1		0700-1900	DP-266	

6. Work Assignments:
Mop up 300' in from control line.
Fall hazard trees and trees that will threaten control lines.
Hold fire within established control lines.

7. Special Instructions: **EMPF McCauley and EMTF Good on a 24 hour shift.**

8. Communications							
Name	Ch	Function	Rx Freq	Rx Tone	Tx Freq	Tx Tone	Notes
NIFC C95	B.5	COMMAND	170.1750	000.0	165.5750	T2 - 123.0	WESTWOOD. ALL REPEATERS LINK BACK TO ICP.
VFIRE 22	7	TACTICAL	154.2650N	T6 - 156.7	154.2650N	T6 - 156.7	WESTWOOD/LASSEN. FSR
CDF T18	14	A/G TACTICAL	159.3450	T16 - 192.8	159.3450	T16 - 192.8	A/G TACTICAL- WEST ZONE
CALCORD	15	MEDICAL	156.0750N	T6 - 156.7	156.0750N	T6 - 156.7	
AIRGUARD	16	AIRGUARD	168.6250	000.0	168.6250	T1 - 110.9	EMERGENCY ONLY

9. Prepared by: Name: R. Villarino	RESL	Signature:
ICS 204	Date/Time: 9/4/2021 2200	Personnel Count: 58

ASSIGNMENT LIST (ICS 204 WF)

CONTROLLED UNCLASSIFIED
INFORMATION//BASIC

1. Incident Name: DIXIE WEST ZONE	2. Operational Period: Date From: 09/05/21 Date To: 09/06/21 Time From: 0700 Time To: 0700	3. Branch Group Janesville Milford
4. Operations Personnel:		Page 1 of 3

Operations Section Chief: M. Wink	Night Ops: M. Jonsson
Branch Director: J. Walton	Branch Safety: Stelling, Zbinden (T), Russell (T)
Division/Group Supervisor: S. Grendahl	Air Branch: M. Hill

5. Resources Assigned:	** Resources Below in Bold are 12 Hour **							
Resource Identifier	ALS	LWD	Leader	Personnel	Request #	Hours	Reporting Location	
STA OES 2802A	X		DEURLOO, JAMES	24	E-409	0700-1900	Black Mtn Rd / Milford Grade	
STC <i>9461C ← Antelope</i>						0700-0700	Black Mtn Rd / Milford Grade	
STC						0700-0700	Black Mtn Rd / Milford Grade	
ENG3 JNV E422				3	E-1730	0700-0700	Black Mtn Rd / Milford Grade	
ENG3 MLF E1725 → <i>to Junction</i>			MOORE, MIKE	3	E1718	0700-0700	Black Mtn Rd / Milford Grade	
ENG6 MLF 1721 → <i>Junction</i>			LEE, DAVE	3	E-1818	0700-0700	Black Mtn Rd / Milford Grade	
T/F OES 4806	X		WILLIAMSON, JOHN	17	E-1105	0700-0700	Black Mtn Rd / Milford Grade	
STG SLU 9342G (CDCR)		9/11	TEBBETS, ERIC	33	C-212	0700-0700	Black Mtn Rd / Milford Grade	
STG						0700-0700	Black Mtn Rd / Milford Grade	
<i>OK</i> STG SLU 9322L → <i>OK</i>			MANFRED, BRENT	9	E-2160	0700-0700	Black Mtn Rd / Milford Grade	
DOZ HUU 1240			St. JOHN, PERRY	2	E-966	0700-0700	Black Mtn Rd / Milford Grade	
DOZ PVT E-618			DUNLAP, DAVID	2	E-618	0700-0700	Black Mtn Rd / Milford Grade	
DOZ PVT E-977			DUNLAP, JIM	2	E-977	0700-0700	Black Mtn Rd / Milford Grade	
DOZ PVT E-985			MAJOR, JOSHUAH	2	E-985	0700-0700	Black Mtn Rd / Milford Grade	
DOZ PVT E-1299			PONCIA, CHRIS	2	E-1299	0700-0700	Black Mtn Rd / Milford Grade	
DOZ PVT E-1301			KIRKLAND, SHANE	2	E-1301	0700-0700	Black Mtn Rd / Milford Grade	
DOZ PVT E-1399			TUFTS, JUSTIN	2	E-1399	0700-0700	Black Mtn Rd / Milford Grade	
DOZ PVT E-1408			JOHNSON, CHAD	2	E-1408	0700-0700	Black Mtn Rd / Milford Grade	

6. Work Assignments:
 Hold and improve control lines.
 Prepare to construct secondary control lines.
 Fall hazard trees and trees that will threaten control lines.

7. Special Instructions:

8. Communications							
Name	Ch	Function	Rx Freq	Rx Tone	Tx Freq	Tx Tone	Notes
NIFC C56	B.2	COMMAND	172.3500	000.0	163.0375	T2 - 123.0	THOMPSON PK. ALL REPEATERS LINK BACK TO ICP.
NIFC T1	12	TACTICAL	168.0500N	T2 - 123.0	168.0500N	T2 - 123.0	
CDF T18	14	A/G TACTICAL	159.3450	T16 - 192.8	159.3450	T16 - 192.8	A/G TACTICAL- WEST ZONE
CALCORD	15	MEDICAL	156.0750N	T6 - 156.7	156.0750N	T6 - 156.7	
AIRGUARD	16	AIRGUARD	168.6250	000.0	168.6250	T1 - 110.9	EMERGENCY ONLY

9. Prepared by: Name: R. Villarino	RESL	Signature:
ICS 204	Date/Time: 9/4/2021 2200	Personnel Count: 108

ASSIGNMENT LIST (ICS 204 WF)

CONTROLLED UNCLASSIFIED
INFORMATION//BASIC

1. Incident Name: DIXIE WEST ZONE	2. Operational Period: Date From: 09/05/21 Date To: 09/06/21 Time From: 0700 Time To: 0700	3. Branch Group Janesville Milford
4. Operations Personnel:		Page 2 of 3

Operations Section Chief: M. Wink	Night Ops: M. Jonsson
Branch Director: J. Walton	Branch Safety: Stelling, Zbinden (T), Russell (T),
Division/Group Supervisor: S. Grendahl	Air Branch: M. Hill

5. Resources Assigned:		** Resources Below in Bold are 12 Hour **					
Resource Identifier	ALS	LWD	Leader	Personnel	Request #	Hours	Reporting Location
DOZ PVT E-1420			SIMPSON, JOHN	2	E-1420	0700-0700	Black Mtn Rd / Milford Grade
DOZ PVT E-1931			KITCHENS, RYAN	2	E-1931	0700-0700	Black Mtn Rd / Milford Grade
DOZ PVT E-1936			JONES, KEN	2	E-1936	0700-0700	Black Mtn Rd / Milford Grade
DOZ PVT E-2032			ROBERTSON, JUSTIN	2	E-2032	0700-0700	Black Mtn Rd / Milford Grade
DOZ PVT E-2075 <i>015</i>			DEPUE, JARED	2	E-2075	0700-0700	Black Mtn Rd / Milford Grade
DOZ PVT E-2083			TAYLOR, DWAYNE	2	E-2083	0700-0700	Black Mtn Rd / Milford Grade
DOZ PVT E-2084			LANDER, STEVEN	1	E-2084	0700-1900	Black Mtn Rd / Milford Grade
EXC PVT E-2112			FREEMAN, SHANE	1	E-2112	0700-1900	Black Mtn Rd / Milford Grade
W/T JNV 432						0700-1900	Black Mtn Rd / Milford Grade
W/T MLF 1733			MARSH, BILL	2	E-1750	0700-1900	Black Mtn Rd / Milford Grade
W/T PVT E-49			ALEXANDER, LUKE	2	E-49	0700-0700	Black Mtn Rd / Milford Grade
W/T PVT E-508			AGUILAR, NICK	2	E-508	0700-1900	Black Mtn Rd / Milford Grade
W/T PVT E-866			ALEXANDER, JIMMY	2	E-866	0700-0700	Black Mtn Rd / Milford Grade
W/T PVT E-869			VANDWARKER, AARON	2	E-869	0700-0700	Black Mtn Rd / Milford Grade
W/T PVT E-1893			CIANDRO, CHRIS	1	E-1893	0700-1900	Black Mtn Rd / Milford Grade
W/T PVT E-1898			PEIXOTO, SUMMER	2	E-1898	0700-0700	Black Mtn Rd / Milford Grade
W/T PVT E-1899			PAILON, STEVE	1	E-1899	0700-1900	Black Mtn Rd / Milford Grade
W/T PVT E-1900			SWENSON, GALE	1	E-1900	0700-1900	Black Mtn Rd / Milford Grade

6. Work Assignments:
 Hold and improve control lines.
 Prepare to construct secondary control lines.
 Fall hazard trees and trees that will threaten control lines.

7. Special Instructions:

8. Communications							
Name	Ch	Function	Rx Freq	Rx Tone	Tx Freq	Tx Tone	Notes
NIFC C56	B.2	COMMAND	172.3500	000.0	163.0375	T2 - 123.0	THOMPSON PK. ALL REPEATERS LINK BACK TO ICP.
NIFC T1	12	TACTICAL	168.0500N	T2 - 123.0	168.0500N	T2 - 123.0	
CDF T18	14	A/G TACTICAL	159.3450	T16 - 192.8	159.3450	T16 - 192.8	A/G TACTICAL - WEST ZONE
CALCORD	15	MEDICAL	156.0750N	T6 - 156.7	156.0750N	T6 - 156.7	
AIRGUARD	16	AIRGUARD	168.6250	000.0	168.6250	T1 - 110.9	EMERGENCY ONLY

9. Prepared by: Name:	R. Villarino	RESL	Signature:
ICS 204	Date/Time: 9/4/2021	2200	Personnel Count: 29

ASSIGNMENT LIST (ICS 204 WF)

CONTROLLED UNCLASSIFIED
INFORMATION//BASIC

1. Incident Name: DIXIE WEST ZONE	2. Operational Period: Date From: 09/05/21 Date To: 09/06/21 Time From: 0700 Time To: 0700	3. Branch Group Janesville Milford
4. Operations Personnel:		Page 3 of 3

Operations Section Chief: M. Wink	Night Ops: M. Jonsson
Branch Director: J. Walton	Branch Safety: Stelling, Zbinden (T), Russell (T),
Division/Group Supervisor: S. Grendahl	Air Branch: M. Hill

5. Resources Assigned:		** Resources Below in Bold are 12 Hour **					
Resource Identifier	ALS	LWD	Leader	Personnel	Request #	Hours	Reporting Location
GDR PVT E-581			MASON, LUKE	1	E-581	0700-1900	Black Mtn Rd / Milford Grade
GRD PVT E-1955			BROWER, JUSTIN	1	E-1955	0700-1900	Black Mtn Rd / Milford Grade
FEL PVT E-1118			ACUNA, EDDIE	1	E-1118	0700-1900	Black Mtn Rd / Milford Grade
FEL PVT E-1223			STRONG, STEVEN	2	E-1223	0700-1900	Black Mtn Rd / Milford Grade
SKD PVT E-515			BARAJAS, CHRISTIAN	1	E-515	0700-1900	Black Mtn Rd / Milford Grade
SKD PVT E-2089			TAYLOR, WES	1	E-2089	0700-1900	Black Mtn Rd / Milford Grade
HEQB GREEN			GREEN, GARRETT	1	O-1803	0700-0700	Black Mtn Rd / Milford Grade
HEQB NEESE (T)			NEESE, DAVID	1	O-1799	0700-0700	Black Mtn Rd / Milford Grade
HEQB						0700-0700	Black Mtn Rd / Milford Grade
HEQB						0700-0700	Black Mtn Rd / Milford Grade
FALM PVT O-216			SHAULIS, RANDY	2	O-216	0700-1900	Black Mtn Rd / Milford Grade
FALM PVT O-755			THOMAS, GARRETT	2	O-755	0700-1900	Black Mtn Rd / Milford Grade
FALM PVT O-931			AMOS, MARK	2	O-931	0700-1900	Black Mtn Rd / Milford Grade
REAF BROWN		9/13	BROWN, SETH	1	O-21085	0700-1900	Black Mtn Rd / Milford Grade
REAF LOMAHUKLUH		9/13	LOMAHUKLUH, MONICA	1	O-21083	0700-1900	Black Mtn Rd / Milford Grade

6. Work Assignments:
 Hold and improve control lines.
 Prepare to construct secondary control lines.
 Fall hazard trees and trees that will threaten control lines.

7. Special Instructions:

8. Communications							
Name	Ch	Function	Rx Freq	Rx Tone	Tx Freq	Tx Tone	Notes
NIFC C56	B.2	COMMAND	172.3500	000.0	163.0375	T2 - 123.0	THOMPSON PK. ALL REPEATERS LINK BACK TO ICP.
NIFC T1	12	TACTICAL	168.0500N	T2 - 123.0	168.0500N	T2 - 123.0	
CDF T18	14	A/G TACTICAL	159.3450	T16 - 192.8	159.3450	T16 - 192.8	A/G TACTICAL- WEST ZONE
CALCORD	15	MEDICAL	156.0750N	T6 - 156.7	156.0750N	T6 - 156.7	
AIRGUARD	16	AIRGUARD	168.6250	000.0	168.6250	T1 - 110.9	EMERGENCY ONLY

9. Prepared by: Name: R. Villarino	RESL	Signature:
ICS 204	Date/Time: 9/4/2021 2200	Personnel Count: 17

ASSIGNMENT LIST (ICS 204 WF)

CONTROLLED UNCLASSIFIED
INFORMATION//BASIC

1. Incident Name: DIXIE WEST ZONE	2. Operational Period: Date From: 09/05/21 Date To: 09/06/21 Time From: 0700 Time To: 0700	3. Branch Group Janesville Junction
--	---	--

4. Operations Personnel:		Page 1 of 2
Operations Section Chief: M. Wink	Night Ops: M. Jonsson	
Branch Director: J. Walton	Branch Safety: Stelling, Zbinden (T), Russell (T),	
Division/Group Supervisor: S. Frederick	Air Branch: M. Hill	

5. Resources Assigned:		** Resources Below in Bold are 12 Hour **					
Resource Identifier	ALS	LWD	Leader	Personnel	Request #	Hours	Reporting Location
STA						0700-0700	DP-627
STA ORC 1400A			ARELLANO, NATE	22	E-956	0700-0700	DP-627
STA OES 2805A			ABELSON, JOEL DAVID	21	E-951	0700-0700	DP-627
STC						0700-0700	DP-627
ENG GIO 231			YUNGKANS, JEFF	4	E-1342	0700-1900	DP-627
STF						0700-0700	DP-627
DOZ MEU 1143			SWEENEY, SEAN	2	E-17	0700-0700	DP-627
DOZ CZU 1741			PYORRE, SEAN	2	E-741	0700-0700	DP-627
DOZ PVT E-589			WYATT, JESSE	2	E-589	0700-1900	DP-627
DOZ PVT E-612			PEARSON, LEMUEL	1	E-612	0700-0700	DP-627
W/T PVT E-452			SPERBECK, BILL	2	E-452	0700-0700	DP-627
W/T PVT E-640			HASTINGS, SCOTT	1	E-640	0700-1900	DP-627
W/T PVT E-1070			WILLIAMS, TIM	2	E-1070	0700-0700	DP-627
W/T PVT E-1379			WILSON, VANCOIS	3	E-1379	0700-0700	DP-627
W/T PVT E-1398			FORESTER, HUGH	2	E-1398	0700-0700	DP-627
W/T PVT E-1897			MCLANE, BILL	2	E-1897	0700-0700	DP-627
W/T PVT E-1997			KOLLENBORN, JIM	1	E-1997	0700-1900	DP-627

6. Work Assignments: *ENG MLF E-1718*
 Hold and improve control lines. *ENG MLF E-1818*
 Implement progressive hose lays as needed.
 Hold fire within established control lines.
 Prepare structures for defensive actions.

7. Special Instructions:

8. Communications							
Name	Ch	Function	Rx Freq	Rx Tone	Tx Freq	Tx Tone	Notes
NIFC C91	B.4	COMMAND	173.9750	000.0	165.4625	T2 - 123.0	SHAFFER MTN. ALL REPEATERS LINK BACK TO ICP.
VFIRE 24	9	TACTICAL	154.2725N	T6 - 156.7	154.2725N	T6 - 156.7	JUNCTION GROUP
CDF T18	14	A/G TACTICAL	159.3450	T16 - 192.8	159.3450	T16 - 192.8	A/G TACTICAL- WEST ZONE
CALCORD	15	MEDICAL	156.0750N	T6 - 156.7	156.0750N	T6 - 156.7	
AIRGUARD	16	AIRGUARD	168.6250	000.0	168.6250	T1 - 110.9	EMERGENCY ONLY

9. Prepared by: Name: R. Villarino	RESL	Signature:
ICS 204	Date/Time: 9/4/2021 2200	Personnel Count: 67

ASSIGNMENT LIST (ICS 204 WF)

CONTROLLED UNCLASSIFIED
INFORMATION/BASIC

1. Incident Name: DIXIE WEST ZONE	2. Operational Period: Date From: 09/05/21 Date To: 09/06/21 Time From: 0700 Time To: 0700	3. Branch Group FSR Lassen FSR
--	---	---

Page 1 of 2

4. Operations Personnel:	
Operations Section Chief: M. Wink	Night Ops: M. Jonsson
Branch Director:	Branch Safety:
Division/Group Supervisor: I. Houser (Day)	Air Branch: M. Hill

5. Resources Assigned:		** Resources Below in Bold are 12 Hour **					
Resource Identifier	ALS	LWD	Leader	Personnel	Request #	Hours	Reporting Location
DOZ PVT E-599			TRESSLER, ARTIE	2	E-599	0700-1900	ICP
DOZ PVT E-695			VARIAN, GREG	1	E-695	0700-1900	ICP
DOZ PVT E-976			MONTZ, JOHN	2	E-976	0700-1900	ICP
DOZ PVT E-987			MONTI, WEST	2	E-987	0700-1900	ICP
DOZ PVT E-1932			COOK, KENNETH	1	E-1932	0700-1900	ICP
MAS PVT E-122			KATZ, MIKE	1	E-122	0700-1900	ICP
MAS BTU 2149			WRIGHT, JONATHAN	1	E-1775	0700-1900	ICP
MAS PVT E-123			FUNES, TOM	1	E-123	0700-1900	ICP
MAS PVT E-329			WARNER, GARY	1	E-329	0700-1900	ICP
MAS PVT E-780			JOHNSON, JON	1	E-780	0700-1900	ICP
EXC PVT E-225			FUNES, TOMMY	1	E-225	0700-1900	ICP
EXC PVT E-778			MOORE, DILLON	1	E-778	0700-1900	ICP
EXC PVT E-1905			TAYLOR, ROD	1	E-1905	0700-1900	ICP
EXC PVT E-1906			OLIVER, KEVIN	1	E-1906	0700-1900	ICP
EXC PVT E-1909			BENSON, LANE	1	E-1909	0700-1900	ICP
EXC PVT E-1910			HALL, MICHAEL	1	E-1910	0700-1900	ICP
EXC PVT E-1971			WARNER, PAUL	1	E-1971	0700-1900	ICP
EXC PVT E-1972			BRITTEN, BEN	1	E-1972	0700-1900	ICP

6. Work Assignments:
Identify and document suppression repair needs.
Implement fire suppression repair plan.

7. Special Instructions:

8. Communications							
Name	Ch	Function	Rx Freq	Rx Tone	Tx Freq	Tx Tone	Notes
NIFC C99	B.6	COMMAND	170.1375	000.0	165.5000	T2 - 123.0	W. PROSPECT PK. ALL REPEATERS LINK BACK TO ICP.
VFIRE 22	7	TACTICAL	154.2650N	T6 - 156.7	154.2650N	T6 - 156.7	WESTWOOD/LASSEN. FSR
CDF T18	14	A/G TACTICAL	159.3450	T16 - 192.8	159.3450	T16 - 192.8	A/G TACTICAL- WEST ZONE
CALCORD	15	MEDICAL	156.0750N	T6 - 156.7	156.0750N	T6 - 156.7	
AIRGUARD	16	AIRGUARD	168.6250	000.0	168.6250	T1 - 110.9	EMERGENCY ONLY

9. Prepared by: Name: R. Villarino RESL Signature:

ICS 204 Date/Time: 9/4/2021 2200 Personnel Count: 21

ASSIGNMENT LIST (ICS 204 WF)

CONTROLLED UNCLASSIFIED
INFORMATION//BASIC

1. Incident Name: DIXIE WEST ZONE	2. Operational Period: Date From: 09/05/21 Date To: 09/06/21 Time From: 0700 Time To: 0700	3. Branch Staging Susanville
4. Operations Personnel:		Page 1 of 1

Operations Section Chief: M. Wink	Night Ops: M. Jonsson
Branch Director:	Branch Safety:
Division/Group Supervisor:	Air Branch: M. Hill

5. Resources Assigned:		** Resources Below in Bold are 12 Hour **					
Resource Identifier	ALS	LWD	Leader	Personnel	Request #	Hours	Reporting Location
DOZ PVT E-1075 → Junction			DAVIS, PAYTON	2	E-1075	0700-0700	ICP
DOZ PVT E-1078 →			BALCOM, ROBERT	2	E-1078	0700-0700	ICP
DOZ PVT E-1402 →			MURRAY, ADAM	1	E-1402	0700-1900	ICP
DOZ PVT E-1419 →			YATES, GRANT	2	E-1419	0700-0700	ICP
DOZ PVT E-1431 →			ANKLIN, RICK	1	E-1431	0700-1900	ICP
DOZ PVT E-1432 Demob			BECKER, CLARK	1	E-1432	0700-0700	ICP
DOZ PVT E-1933 → Junction			FIELDS, BRUCE	2	E-1933	0700-0700	ICP
DOZ PVT E-1934			LYNCH, MARTY	2	E-1934	0700-0700	ICP
DOZ PVT E-2076			SANDOVAL, JUAN	1	E-2076	0700-1900	ICP
DOZ PVT E-2078 → to Junction			WUNSCH, DAN	2	E-2078	0700-0700	ICP
DOZ PVT E-2085 → Junction			PAULA, BRIAN	2	E-2085	0700-0700	ICP
EXC PVT E-2114			ROGERS, JAMES	1	E-2114	0700-1900	ICP
GRD PVT E-2169			HALL, MICHAEL	1	E-2169	0700-1900	ICP
GRD PVT E-2220			GREGORY, STEPHENIE	1	E-2220	0700-1900	ICP
GRD PVT E-2221			NASON, BRYCE	1	E-2221	0700-1900	ICP
FALM PVT O-1818 O/S			DUEKER, RUSSELL	2	O-1818	0700-1900	ICP
MAS E-2104 ← Bette FSR							

6. Work Assignments:
 Monitor command frequencies.
 Maintain 3 minute response time.

7. Special Instructions:

8. Communications							
Name	Ch	Function	Rx Freq	Rx Tone	Tx Freq	Tx Tone	Notes
NIFC C91	B.4	COMMAND	173.9750	000.0	165.4625	T2 - 123.0	SHAFFER MTN. ALL REPEATERS LINK BACK TO ICP.
CDF T18	14	A/G TACTICAL	159.3450	T16 - 192.8	159.3450	T16 - 192.8	A/G TACTICAL- WEST ZONE
CALCORD	15	MEDICAL	156.0750N	T6 - 156.7	156.0750N	T6 - 156.7	
AIRGUARD	16	AIRGUARD	168.6250	000.0	168.6250	T1 - 110.9	EMERGENCY ONLY

9. Prepared by: Name:	R. Villarino	RESL	Signature:
ICS 204	Date/Time: 9/4/2021	2200	Personnel Count: 24

AIR OPERATIONS SUMMARY ICS-220

Incident Name and Incident Number
EAST & WEST ZONES/DIXIE 21-CABTU-009205

General Remarks, Safety Notes, Hazards, Air Operations Special Equipment, etc.
TRACK ALL DIPSITE LOCATIONS / NUMBER OF DIPS / GALLONS TAKEN.
TRACK ALL DROP LOCATIONS / NUMBER OF DROPS / GALLONS DROPPED.
ALL GPS DATA TO BE COLLECTED IN DEGREES, DECIMAL MINUTES FORMAT.

AVOID Aerial Application of Retardant / Foam / Agent within 300' of Waterways, Bodies of Water, etc.
If Retardant / Foam / Agent is Dropped Within These Areas Immediately Notify the AOB and Provide the Following Information: Lat / Long. Estimated Number of Gallons and a Map Detailing The Area.

Aircraft Ordering: Command (CDF Command 1) use (T10) 107.2
Order All Aircraft through Susanville

Time Prepared
1800

Date Prepared
Saturday, September 4, 2021

Prepared By
Matt Hill

Operational Period - Date
Sunday, September 5, 2021

Operational Period - Time
0700-0700

Rescue Ship Information

Radius: Polygon	NM	Name	G841
Altitude: 12500'	MSL	Phone	(630) 257-5575
Frequency: 125.1750		Make/Model	UH60
EAST ZONE A-20229 NOTAM: 1/0944		Location	Reno INTL
Radius: Polygon	NM	Request Procedure for These Aircraft:	Incident Communications
Altitude: 12500'	MSL		See Medical Plan For Additional Info
Frequency: 127.4250			

http://tfr.faa.gov/tfr2/list.html

WEST ZONE-(WEST COMMUNICATIONS/HELIBASES)		EAST ZONE-(EAST COMMUNICATIONS/HELIBASES)	
Frequencies	RX	Tone	TX
WEST AIR TACTICS	165.9875		167.0625
AIR / AIR TFR	125.1750		127.4250
WEST FIX WING BRIEFING	119.0750		134.0250
WEST COMMAND	170.4500	T2-123.0	168.0750
WEST 1 ROTOR VICTOR	128.0250		132.2750
WEST 2 ROTOR VICTOR	123.7250		126.6750
WEST A/G- Command	166.6000		168.3375
WEST A/G - Tactical	159.3450	T16-192.8	169.1000
TOLC (Eagle)	120.1250		163.1000
DECK (Battle Creek/Eagle)	168.3500	T2-123.0	156.0750
TOLC (Battle Creek)	123.0250		168.6250
FAA #	Type	Make/Model	Helibase
35S	I	S64E	Battle
37S	I	S64E	Chico
3PG	I	UH-60	Battle
4PG	I	UH-60	Battle
2MP	I	UH-60	Battle
79R	I	CH54A	Battle
95B	I	CH54A	Battle
22Z	II	BELL 212	Battle
4TV	III	AS350B2	Battle
2KK	III	BELL 206L-1	Battle
4CK	I	UH-60	Eagle
5CK	I	UH-60	Eagle
61CG	I	S61N	Eagle
2CH	I	CH47	Eagle
5CH	I	BV234	Eagle
7CH	I	BV107-II	Eagle
3HL	II	212HP	Eagle
3RC	II	UH1H	Eagle
6GM	III	BELL 206 L-4	Eagle
5AS	III	BELL 407	Eagle
3PD	III	AS350B3	Eagle
Remarks	Start	Avail	Helibase
Tank A-374	0800	0800	Quincy
Tank A-133	0800	0800	Quincy
Longline A-619	0800	0800	Quincy
Longline A-620	0800	0800	Quincy
Longline A-618	0800	0800	Quincy
Tank A-669	0800	0800	Quincy
Tank A-20233	0800	0800	Quincy
Std/Longline A-22	0800	0800	Nervino
HLCO Recon A-154	0800	0800	Nervino
HLCO Recon A-622	0800	0800	Nervino
Longline A-742	0800	0800	Nervino
Longline A-743	0800	0800	Nervino
Longline A-524	0800	0800	Nervino
Tank A-373	0800	0800	Nervino
Std/Longline A-505	0800	0800	Nervino
Longline A-525	0800	0800	Nervino
Std/Tank A-385	0800	0800	Nervino
Limited/Tank A-688	0800	0800	Nervino
HLCO Recon A-523	0800	0800	Nervino
HLCO Recon A-28	0800	0800	Nervino
HLCO Recon A-30	0800	0800	Nervino
FAA #	Type	Make/Model	Helibase
2WM	I	KMAX	Quincy
562	I	KMAX	Quincy
2BT (510)	II	212HP	Quincy
OPF (512)	II	212HP	Quincy
37HX	II	Bell 205A-1	Quincy
553	III	Bell 407	Quincy
9WA	I	KMAX	Nervino
4TH	I	KMAX	Nervino
2FH	I	UH60	Nervino
3AC	I	S64F	Nervino
3BH	I	UH60	Nervino
5TK (532)	II	Bell 205A-1	Nervino
7XL	III	AS350B3	Nervino
41HX	III	Bell 407	Nervino
S261	III	CL215T	Stead
S263	III	CL215T	Stead
UR3A	4	M600/Alta-X	East Zone
UR41	4	M2EA	West Zone
UR43	4	M2EA	West Zone
S261	III	CL215T	Stead
S263	III	CL215T	Stead
UR3A	4	M600/Alta-X	East Zone
UR41	4	M2EA	West Zone
UR43	4	M2EA	West Zone
Remarks	Start	Avail	Tone
Bucket A-20032	0800	0800	167.0625
Bucket A-20150	0800	0800	127.4250
Std/Bucket A-20001	0800	0800	134.0250
Std/Longline A-20081	0800	0800	T3-131.8
Std/Longline A-20237	0800	0800	168.0750
HLCO Recon A-20014	0800	0800	132.2750
Bucket A-20186	0800	0800	126.6750
Bucket A-20171	0800	0800	168.3375
Bucket A-20149	0800	0800	169.1000
Tank A-20012	0800	0800	163.1000
Bucket A-20019	0800	0800	156.0750
Std/Longline A-20013	0800	0800	168.6250
HLCO Recon A-20006	0800	0800	156.7 (6)
HLCO Recon A-20140	0800	0800	110.9 (1)
SCOOPER A-20200	0800	0800	
SCOOPER A-20201	0800	0800	
UAS/EO/IR/AI	1700	1700	
UAS/EO/IR	1700	1700	
UAS/EO	1700	1700	

AIR OPERATIONS SUMMARY ICS-220						Time Prepared		Date Prepared		Prepared By	
Incident Name and Incident Number		Sunrise		Startup		Cutoff		Sunset		Saturday, September 4, 2021	
EAST & WEST ZONES/ DIXIE 21-CABTU-009205		638		708		1904		1934		Matt Hill	
						Shutdown		Operational Period - Date		Operational Period - Time	
						2004		Sunday, September 5, 2021		0700-0700	

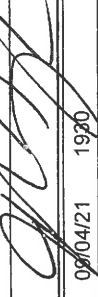
West Zone						East Zone					
Position	Name	Phone	Trainee	Phone	Position	Name	Phone	Trainee	Phone		
AOBD	Matt Hill	(530) 708-2707			AOBD	Jeremy Seng	(775) 685-6170				
AOBD (D)	Thomas Smith	(530) 308-1970			ASGS	Doug Marolf	(208) 634-3948	T. Detrick	(530) 925-9668		
ASGS	Peter York	(530) 386-2147			HEBM	C. Bradley (Quincy)	(530) 394-0961				
HEBM	Peter Bosco (Eagle)	(951) 973-2158			HEBM	K. Cristy (Nervino)	(310) 422-3832				
HEBM	Matt Munson (Battle)	(707) 228-6646			ATGS	Brian Rogers	(530) 310-3506				
ATGS	Shem Hawkins	(530) 521-8748			ATGS	Justin Cutler	(775) 315-6113				
HLCO			B. Barnett	(805) 305-0211	HLCO	Brian Baker	(530) 394-8110				
HLCO	Sean Ryan (Battle)	(530) 559-8324			HLCO	Lucas Rhea	(702) 556-2255				
HLCO	James Tully (Eagle)	(805) 903-3408	D. Kowalski	(951) 285-4958	Scooper Mgr.	Cody Russell	(970) 596-4672				
UASP	Gary Baumgartner	(907) 370-3449	C. Brown		UASP	Steve Ramaekers	(208) 473-8708				
					UASP	Ashton Ferruzzi	(406) 223-5576				
					UASP	Shane Ralston	(406) 396-3526		Page 2 of 2		

ICS 205 - INCIDENT RADIO COMMUNICATIONS PLAN

1. Incident Name: **DIXIE WEST ZONE**
 Date: 09/04/2021
 Date From: 09/05/21
 Date To: 09/06/21
 Time: 1930
 Time From: 0700
 Time To: 0700

4. Communications		2. Date/Time Prepared		3. Operational Period:				
Ch#	Function	Name	Assigned To	Rx Freq	Rx Tone	Tx Freq	Tx Tone	Notes
1	COMMAND	NIFC C76	BRANCH 16	173.9375	000.0	163.6125	T2 - 123.0	ROOP MTN. ALL REPEATERS LINK BACK TO ICP.
2	COMMAND	NIFC C56	ANTELOPE GRP	172.3500	000.0	163.0375	T2 - 123.0	THOMPSON PK. ALL REPEATERS LINK BACK TO ICP.
3	COMMAND	NIFC C89	BRANCH 16	173.7375	000.0	164.0125	T2 - 123.0	ANTELOPE L.O. ALL REPEATERS LINK BACK TO ICP.
4	COMMAND	NIFC C91	JANESVILLE	173.9750	000.0	165.4625	T2 - 123.0	SHAFFER MTN. ALL REPEATERS LINK BACK TO ICP.
5	COMMAND	NIFC C95	BRANCH 16	170.1750	000.0	165.5750	T2 - 123.0	WESTWOOD. ALL REPEATERS LINK BACK TO ICP.
6	COMMAND	NIFC C99	BRANCH 16	170.1375	000.0	165.5000	T2 - 123.0	W. PROSPECT PK. ALL REPEATERS LINK BACK TO ICP.
7	TACTICAL	VFIRE 22	CLEAR BRANCH	154.2650N	T6 - 156.7	154.2650N	T6 - 156.7	WESTWOOD/LASSEN. FSR
8	TACTICAL	VFIRE 23	ANTELOPE / L. CONT.	154.2950N	T6 - 156.7	154.2950N	T6 - 156.7	ANTELOPE GRP, LASSEN CONTING
9	TACTICAL	VFIRE 24	JUNCTION GRP	154.2725N	T6 - 156.7	154.2725N	T6 - 156.7	
10	TACTICAL	VFIRE 25	DIV Q	154.2875N	T6 - 156.7	154.2875N	T6 - 156.7	
11	TACTICAL	VFIRE 26	DIV S / T / U	154.3025N	T6 - 156.7	154.3025N	T6 - 156.7	
12	TACTICAL	NIFC T1	DIV R / MILFORD	168.0500N	T2 - 123.0	168.0500N	T2 - 123.0	
13	A/G CMD	A/G CMD	ALL DIVS	166.6000N	000.0	166.6000N	000.0	A/G COMMAND- WEST ZONE
14	A/G TACTICAL	CDF T18	ALL DIVS	159.3450	T16 - 192.8	159.3450	T16 - 192.8	A/G TACTICAL- WEST ZONE
15	MEDICAL	CALCORD	ALL DIVS	156.0750N	T6 - 156.7	156.0750N	T6 - 156.7	
16	AIRGUARD	AIRGUARD	ALL DIVS	168.6250	000.0	168.6250	T1 - 110.9	EMERGENCY ONLY
17								
18								
19								
20	AIRGUARD	AIRGUARD	ALL DIVS	168.6250	000.0	168.6250	T1 - 110.9	EMERGENCY ONLY

5. Special Instructions
 NIFC Frequencies will require the user to select Tone 2 in CALFIRE Statewide programmed radios. West Communications is located in Susanville.
 Radio Zone 52 / Group 14. DIXE L11

6. Prepared by (Communications Unit Leader): Name: JOHN AGUILERA
 Signature: 
 Date/Time: 09/04/21 1930
 NIMS IAP


ICS 205 - INCIDENT RADIO COMMUNICATIONS PLAN

1. Incident Name: **DIXIE WEST ZONE**
 Date: 09/04/2021
 Date From: 09/05/21
 Date To: 09/06/21
 Time: 1930
 Time From: 0700
 Time To: 0700

2. Date/Time Prepared		3. Operational Period:						
Ch#	Function	Name	Assigned To	Rx Freq	Rx Tone	Tx Freq	Tx Tone	Notes
1	COMMAND	NIFC C2	BRANCH 9 /13	170.4500	000.0	168.1000	T2 - 123.0	PEGLEG L.O. ALL REPEATERS LINKED BACK TO ICP
2	COMMAND	NIFC C10	BRANCH 9 /13	170.4125	000.0	165.9625	T2 - 123.0	DYER MTN. ALL REPEATERS LINKED BACK TO ICP
3	COMMAND	NIFC C31	BRANCH 9 /13	173.0250	000.0	163.8250	T2 - 123.0	MT LASSEN. ALL REPEATERS LINKED BACK TO ICP
4	COMMAND	NIFC C47	UNASSIGNED	172.5500	000.0	165.3875	T2 - 123.0	
5	COMMAND	NIFC C57	BRANCH 9 /13	173.7500	000.0	167.5500	T2 - 123.0	W. PROSPECT PK. ALL REPEATERS LINK BACK TO ICP.
6	COMMAND	BTU CMD	BRANCH 1/5/7 BTU FSR	154.4150	T2 - 123.0	159.0000	T4 - 136.5	USE FOR BRANCH 1/5/7 & BUTTE FSR *ONLY*
7	TACTICAL	CDF T28	A/B/C/E/F/G/H	151.1825	T16 - 192.8	151.1825	T16 - 192.8	
8	TACTICAL	CDF T29	DIV J / K	151.3475	T16 - 192.8	151.3475	T16 - 192.8	
9	TACTICAL	CDF T30	DIV L	151.3925	T16 - 192.8	151.3925	T16 - 192.8	
10	TACTICAL	CDF T31	DIV N/O / SHASTA CONT.	159.3825	T16 - 192.8	159.3825	T16 - 192.8	
11	TACTICAL	VTAC12	BUTTE FSR	154.4525	T6 - 156.7	154.4525	T6 - 156.7	
12	TACTICAL	VTAC13	DIV P	158.7375	T6 - 156.7	158.7375	T6 - 156.7	
13	A/G CMD	A/G CMD	ALL DIVS	166.6000N	000.0	166.6000N	000.0	A/G COMMAND- WEST ZONE
14	A/G TACTICAL	CDF T18	ALL DIVS	159.3450	T16 - 192.8	159.3450	T16 - 192.8	A/G TACTICAL- WEST ZONE
15	MEDICAL	CALCORD	ALL DIVS	156.0750N	T6 - 156.7	156.0750N	T6 - 156.7	
16	AIRGUARD	AIRGUARD	ALL DIVS	168.6250	000.0	168.6250	T1 - 110.9	EMERGENCY ONLY
17								
18								
19								
20	AIRGUARD	AIRGUARD	ALL DIVS	168.6250	000.0	168.6250	T1 - 110.9	EMERGENCY ONLY

4. Communications

5. Special Instructions
 NIFC Frequencies will require the user to select Tone 2 in CALFIRE Statewide programmed radios. West Communications is located in Susanville.
 Radio Zone 51 / Group 15: DIXE B11

6. Prepared by (Communications Unit Leader): Name: JOHN AGUILERA
 Signature: 
 Date/Time: 09/04/21 1930
 NIMS IAP

INCIDENT RADIO COMMUNICATIONS PLAN (ICS 205)

Controlled Unclassified Information//Basic

1. Incident Name:		2. Date/Time Prepared:		3. Operational Period:		DAY/NIGHT	
DIXIE FIRE		Date:	09/04/2021	Date/Time From:	09/05/2021 0700	Date/Time To:	09/06/2021 0700
		Time:	0903		SUN		MON

4. Basic Radio Channel Use:										
Zone Group	Ch #	Function	Channel Name/Trunked Radio System Talkgroup	Assignment	RX Freq	RX Tone/NAC	TX Freq	TX Tone/NAC	Mode (A,D, or M)	Remarks
	01	COMMAND	NIFC C68	ALL DIVS	172.0875	T3 131.8	162.3625	T3 131.8	A	THOMPSON PK
	02	COMMAND	NIFC C8	ALL DIVS	169.5375	T3 131.8	164.7125	T3 131.8	A	SPANISH PK
	03	COMMAND	NIFC C3	ALL DIVS	170.4250	T3 131.8	168.0750	T3 131.8	A	MT. HOUGH
	04	COMMAND	NIFC C46	ALL DIVS	171.0875	T3 131.8	164.6000	T3 131.8	A	DYER
	05	COMMAND	NIFC C12	ALL DIVS	173.0375	T3 131.8	167.3250	T3 131.8	A	KETTLE ROCK
	06	COMMAND	NIFC C30	ALL DIVS	171.1125	T3 131.8	162.1875	T3 131.8	A	DIXIE MTN
	07	TACTICAL	VFIRE 22	DIV NN, STRUCTURE	154.2650	T6 156.7	154.2650	T6 156.7	A	
	08	TACTICAL	VFIRE 23	DIV UU	154.2950	T6 156.7	154.2950	T6 156.7	A	NIGHT DIV UU
	09	TACTICAL	NIFC T5	DIV QQ, DIV WWXX	166.7250	T3 131.8	166.7250	T3 131.8	A	
	10	TACTICAL	NIFC T6	DIV RR	166.7750	T3 131.8	166.7750	T3 131.8	A	NIGHT DIV RR
	11	TACTICAL	NIFC T7	DIV PP	168.2500	T3 131.8	168.2500	T3 131.8	A	
	12	TACTICAL	NIFC T99	GENESSEE MILITARY, DIV OO	165.3625	T3 131.8	165.3625	T3 131.8	A	
	13	AIR TO GROUND	AG COMMAND E	ALL DIVS	168.3375	000.0	168.3375	000.0	A	
	14	AIR TO GROUND	AG TAC E	ALL DIVS	169.1000	000.0	169.1000	000.0	A	
	15	AIR TO GROUND	CALCORD	MEDEVAC	156.0750	T6 156.7	156.0750	T6 156.7	A	CALCORD MEDEVAC
	16	AIR GUARD	AIRGUARD	EMERGENCY	168.6250	000.0	168.6250	T1 110.9	A	EMERGENCY

5. Special Instructions:

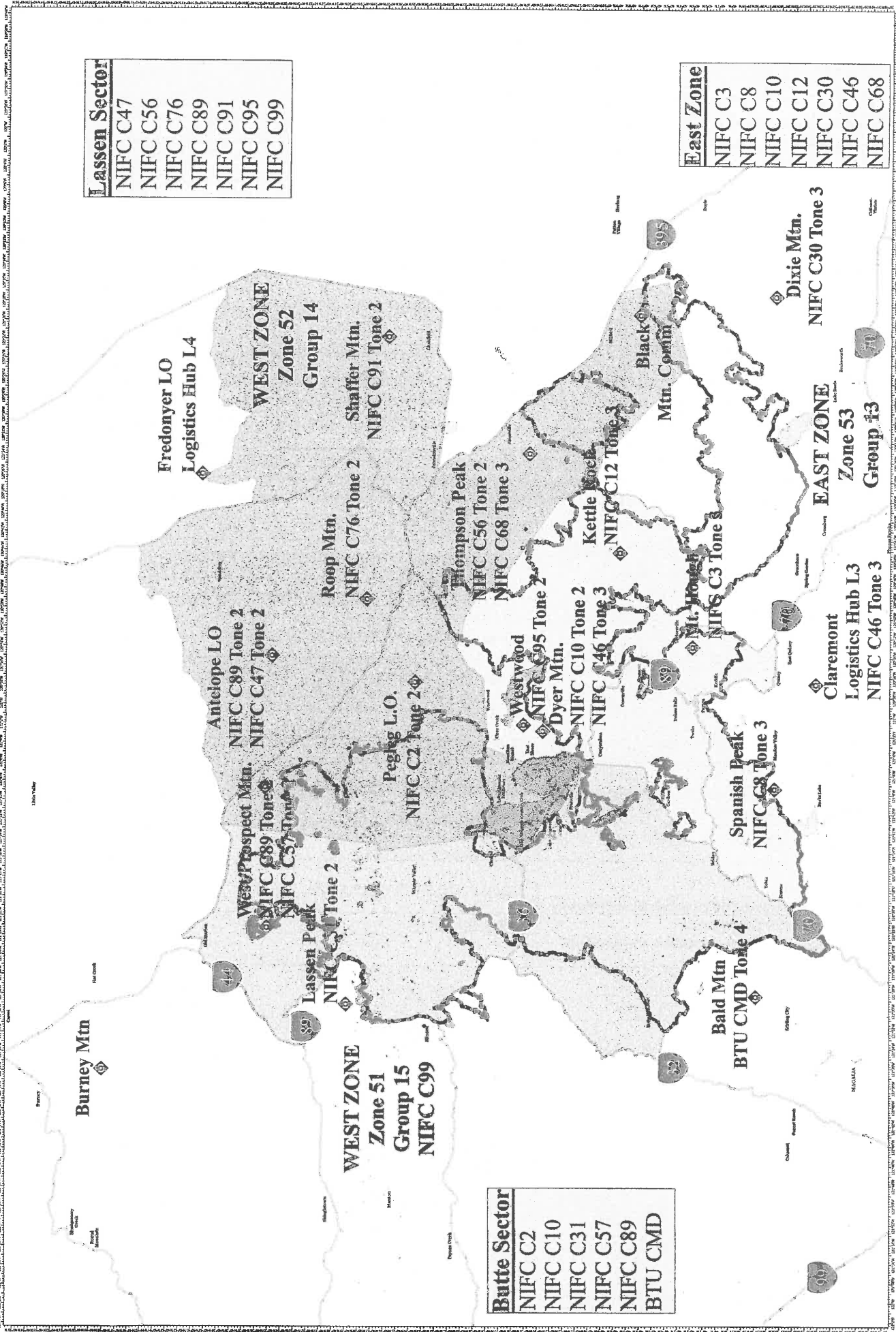
6. Prepared By (Communications Unit Leader) Name: BRANDON DIEMER Signature:

ICS 205 IAP Page Date/Time: 09/04/2021 0903

Lassen Sector	
NIFC C47	
NIFC C56	
NIFC C76	
NIFC C89	
NIFC C91	
NIFC C95	
NIFC C99	

East Zone	
NIFC C3	
NIFC C8	
NIFC C10	
NIFC C12	
NIFC C30	
NIFC C46	
NIFC C68	

Butte Sector	
NIFC C2	
NIFC C10	
NIFC C31	
NIFC C57	
NIFC C89	
BTU CMD	



RADIO ZONES
DIXIE INCIDENT
CA-BTU-009205
Sept 05, 2021

Date Incident
CA-BTU-009205
Sept 05, 2021

EAST ZONE

- Group 13
- WEST ZONE
- Group 15
- Zone 51
- Zone 52
- Group 14
- Zone 53
- Group 13

Report

Date Incident
CA-BTU-009205
Sept 05, 2021

Date Incident
CA-BTU-009205
Sept 05, 2021

MEDICAL PLAN	1. INCIDENT NAME	2. DATE PREPARED	3. TIME PREPARED	4. OPERATIONAL PERIOD
	Dixie CA-BTU-009205	09/4/21	1700	0700-0700 09/05/21-09/06/21

5. INCIDENT MEDICAL AID STATIONS			
MEDICAL AID STATIONS	LOCATION	PARAMEDICS	
		YES	NO
CAL-MAT	ICP	DR & RN	

6. TRANSPORTATION					
A. Air Ambulances					
NAME	ADDRESS	PHONE	PARAMEDICS		
			YES	NO	
Guard 841 (24-hour Hoist)	Reno International Airport	Susanville ECC	XX		
Guard 820 (24-hour Hoist)	Redding	Susanville ECC	XX		
SEMSA 1	Susanville	Susanville ECC	XX		
B. Ground Ambulances					
Manteca District Ambulance	Medic 6 DP-146 (Branch 16)	CMD Channel	XX		
Mercy Ambulance	Medic 5 ICP	CMD Channel	XX		
Del Norte Ambulance	Medic 8 Highland Ranch Camp (Branch 13)	CMD Channel	XX		

7. HOSPITALS								
NAME	ADDRESS	TRAVEL TIME		PHONE	HELIPAD		BURN CENTER	
		AIR	GRND		YES	NO	YES	NO
Banner Lassen Medical Ctr.	1800 Spring Ridge Dr. Susanville 40 28.27 N 120 37.67 W	5 min	10 min	(530) 257-0911	XX			XX
Enloe Hospital Level 2 Trauma	1530 Esplanade, Chico 39 44.56 N 121 51.10 W	15 min	1.5 hrs	(530) 332-7740	XX			XX
UC Davis Medical Center Level 1 Trauma	2315 Stockton Blvd, Sacramento 38 33.33 N 121 27.32 W	45 min	3 hrs	(916) 734-2011	XX		XX	
Renown Regional Medical Level 2 Trauma	1115 Mill Street Reno, NV 39 31.32 N 119 47.44 W	35 min	1.5 hrs	(775) 982-2005 Charge RN Line	X 2			XX
Mercy Hospital Level 2 Trauma	2175 Rosaline Ave, Redding, CA 40 34.33 N 122 23.80 W	20 min	2.5 hrs	(530) 225-7201 Nurse Line	XX			XX

8. MEDICAL EMERGENCY PROCEDURES	
<p>LINE EMERGENCY: Crew Supervisor to contact Division Supervisor with patient complaint/condition and location.</p> <ul style="list-style-type: none"> Division Supervisor contacts: <ul style="list-style-type: none"> FEMT / FEMP Communications Unit Div is the IC for the Incident Communication Unit will clear command channel for emergency traffic; as needed for Minor/Major Emergency. Communications will switch all emergency traffic to CALCORD as needed or requested. Communications Unit contacts: <ul style="list-style-type: none"> Medical Unit Safety Operations Division Supervisor will run medical emergency on CALCORD. Medical Unit will: <ol style="list-style-type: none"> Dispatch air/ground ambulance to as appropriate. If necessary, after patient pickup, dispatch ambulance to helibase for transportation. Notify receiving hospital of injury status. <p>***Start a 20-minute timer***</p> <p>CAMP EMERGENCY: Contact Medical Unit with patient complaint/condition and location. Medical Staff will respond to stabilize incident.</p>	<p>INJURY REPORTING PROCEDURES</p> <p>NATURE OF INJURY _____</p> <p>LOCATION OF PATIENT _____</p> <p>TRANSPORTATION REQUESTED BY: AIR _____ GROUND _____</p> <p>POINT OF PICKUP _____</p> <p>LAT _____ LONG _____</p> <p>PATIENT UNIT ID _____</p> <p>REMINDER: DO NOT GIVE PT NAME OVER RADIO</p> <p>IS AN EMT WITH PATIENT: YES _____ NO _____</p> <p>AGE _____</p> <p>SEX: MALE _____ FEMALE _____</p> <p>ALL EMERGENCIES---Secure the area and identify witnesses for later investigation. Keep an accurate log of events.</p> <p>***Start a 20-minute timer***</p> <p>Medical Unit (951) 757-4670</p>

ICS 206 8-78	9. PREPARED BY (MEDICAL UNIT LEADER) Raice Wicklas MEDL 	10. REVIEWED BY (SAFETY OFFICER) Brad Niven SOF1 
--------------	--	---



CAL FIRE IMT 1 COVID -19 ACTIONS



PERSONNEL WITH COVID-19 SYMPTOMS

- **Symptoms per CDPH current guidelines include the following:**
 - Cough, fever, chills, muscle pain, shortness of breath
 - Sore throat, new loss of taste or smell
- **Incident Base of Fire Line**
 - Maintain appropriate face covering
 - Notify supervisor and proceed to CALMAT
 - Isolate and assess patient
 - Medical direction to test, return patient to home unit/agency for further testing

CONTACTED OR EXPOSED PERSONNEL AND ASYMPTOMATIC

- Notify supervisor
- Maintain appropriate face covering
- Self-monitor for symptoms

PREVENTATIVE MEASURES TO SLOW THE TRANSMISSION OF COVID-19:

- Wash your hands regularly with soap and water or clean them with alcohol-based hand sanitizer
- Maintain at least six feet distance between you and people coughing or sneezing
- Avoid touching your face
- Cover your mouth and nose when coughing or sneezing
- Stay home if you feel unwell
- Refrain from smoking and other activities that weaken the lungs
- Practice physical distancing by avoid unnecessary travel and staying away from large groups of people
- Maintain proper personal care (healthy diet and rest)



CAL FIRE INCIDENT MANAGEMENT TEAM 1



1. INCIDENT NAME: Dixie Incident		2. DATE PREPARED: September 4, 2021	3. TIME PREPARED: 1800
4. PREPARED BY: Clinton Hamilton SOF1-T	5. LEADER NAME: Clinton Hamilton SOF1-T	6. OPERATIONAL PERIOD: 9/5/2021 0700 TO 9/6/2021 0700	

SAFETY MESSAGE

“If you see something, say something”.

- Make sure everyone receives a briefing on the current days IAP.
- Utilize all PPE during line operations.
- Monitor your hydration/nutrition intake and keep adequate supplies of both.
- Be aware of rotor wash when working near helicopters.
- Watch for hazard trees in the burned and unburned areas of the incident.
- Maintain situational awareness when driving.
- Monitor personnel fatigue both mental and physical.
- Make sure L.C.E.S is being utilized during all aspects of the incident.

Fire Behavior

- Watch for reburn potential
- Rapid changes in conditions
- Strong winds possible in the coming days
- Maintain situational awareness

COVID-19

- Follow local masking guidelines
- Practice good personnel hygiene
- Report all illness to your supervisor
- Maintain social distancing
- Wash your hands often
- Clean and disinfect often
- Be alert for symptoms

CAL FIRE INCIDENT MANAGEMENT TEAM 1 SOF1(T) Clinton Hamilton



DIXIE FIRE

LOGISTICS MESSAGE



SERVICES SCHEDULE – SUSANVILLE BASE CAMP

MKU:

Breakfast:	0500-1100
Dinner:	1700-2200
Sack Lunch Distribution:	0600-2100
Laundry Service:	0600-2200
Showers:	0500-2300
Supply:	0600-2200
Saw Shop:	0600-2200
Radio Repair:	0630-1830
Fuel:	24 hr Service
MERT:	24 hr Service
Cal Mat:	24 hr Service

SERVICES SCHEDULE – HAT CREEK CAMP

MKU:

Breakfast:	0600-0900
Dinner:	1830-2130
Sack Lunch Distribution:	0600-2100
Laundry Service:	0600-2200
Showers:	0600-2200
Supply:	0700-1000
Radio Repair:	0700-0800
Fuel:	0600-2200
Medical: (Medic #8)	24 hr Service

REFRIDGERATION TRUCK (ICE, WATER and GATORADE)

Susanville Base	24 hr Service
Hat Creek Base	24 hr Service



DIXIE INCIDENT CAL FIRE IMT 1 Supply Message



- Strike Team Leaders or Designee's only in the Supply line
- Please have a 213 filled out with all of your resource/strike team needs, With divisions signature
- CALFIRE 101 filled out for all items left on the line, with divisions signature
- All firing device orders must have operations signature to get resupplied

Thank you



VEHICLE REPAIR REQUEST CHECKLIST

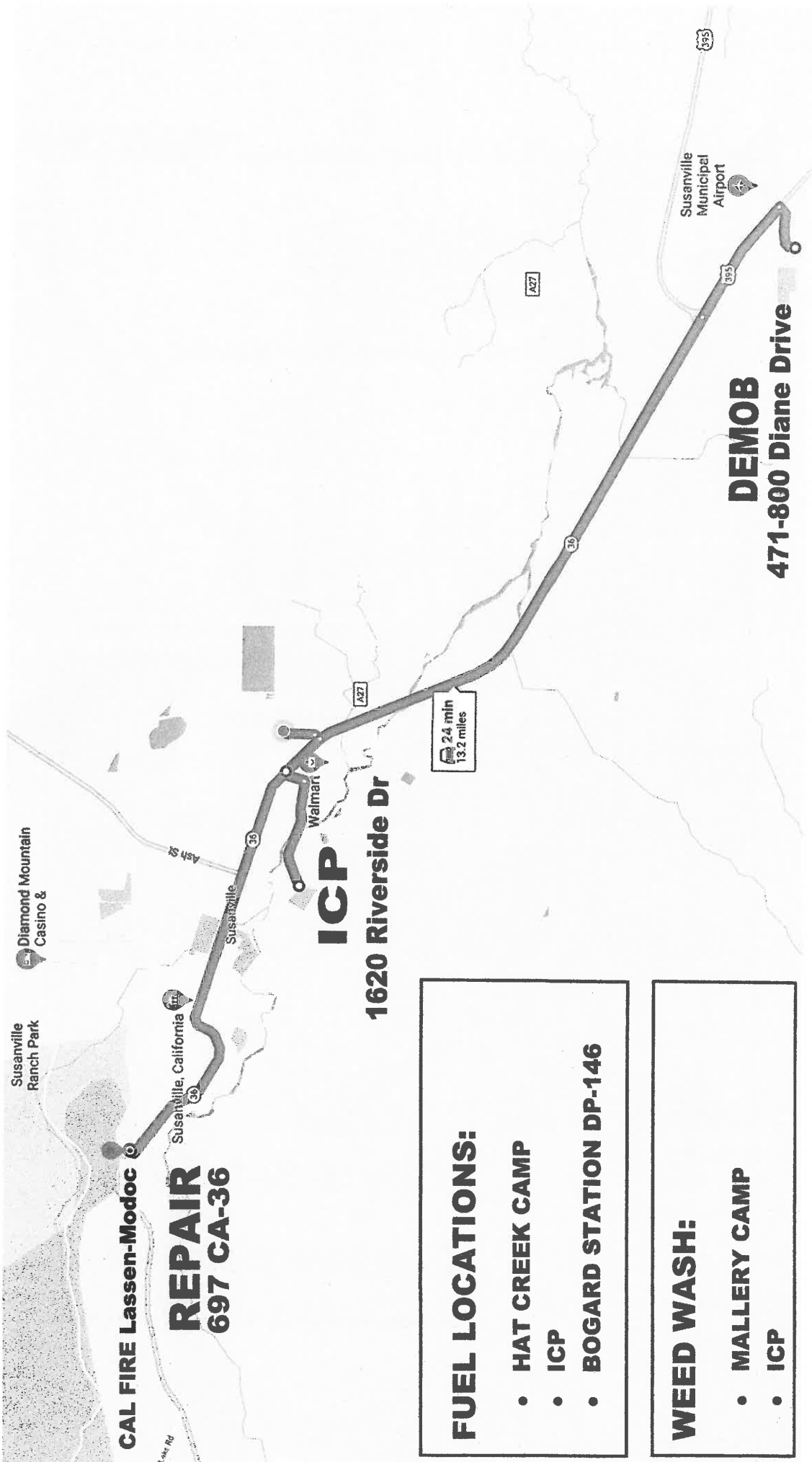


To expedite repairs on disabled equipment on the fireline we request the following information

Resource Order # (O, E, C)					
Contact Name					
Contact Phone Number					
Branch		Division			
Command		Tone		TAC	
Vehicle ID (IE: Engine #, Dozer #, Utility #) & (CAL FIRE Equipment X Number)					
Year, Make, Model					
Exact Location of Vehicle					
Description of Problem					

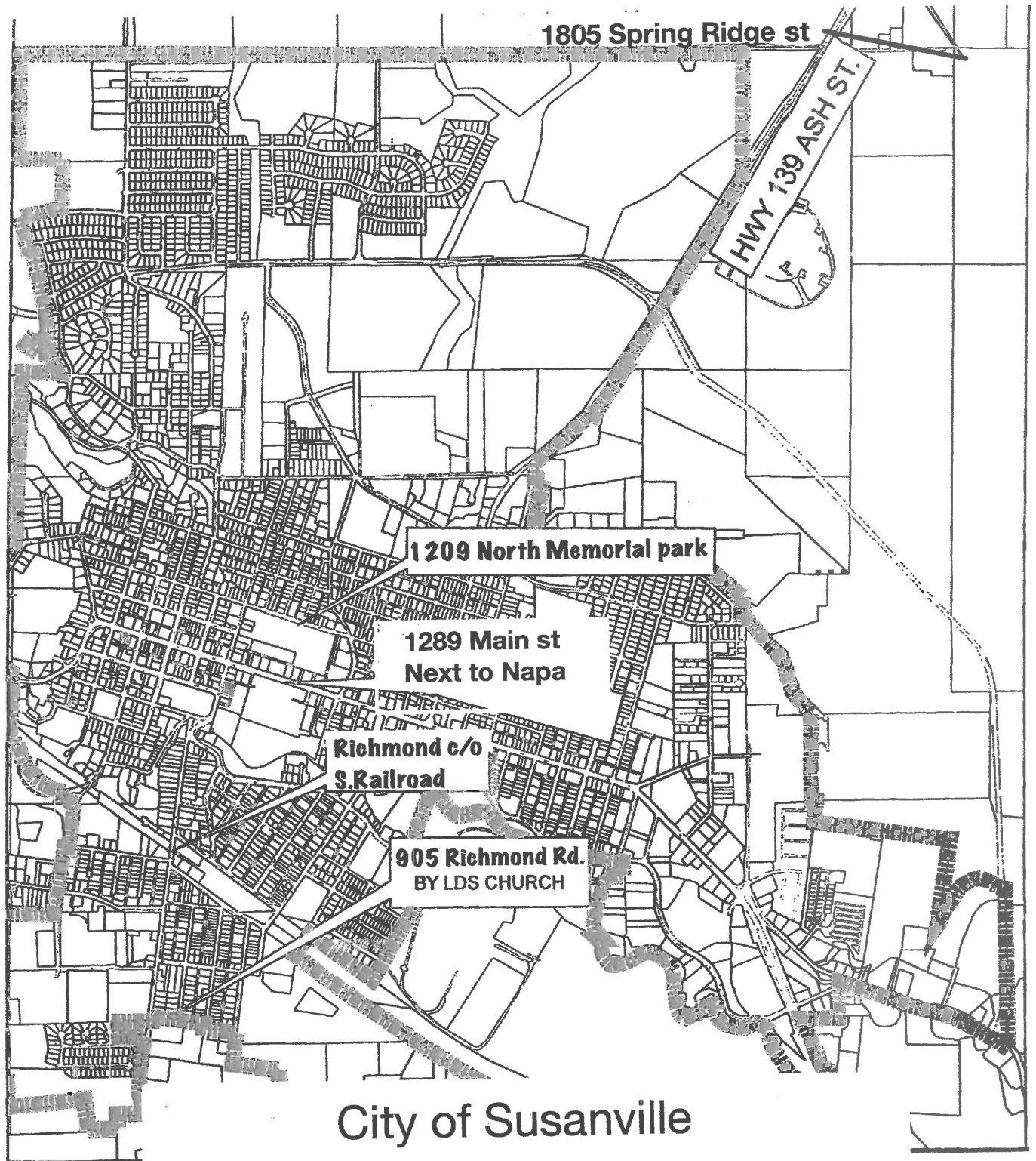


FUEL-REPAIR-DEMOb MAP



- FUEL LOCATIONS:**
- HAT CREEK CAMP
 - ICP
 - BOGARD STATION DP-146

- WEED WASH:**
- MALLERY CAMP
 - ICP



City of Susanville

Dixie Fire Water Sites



DIXIE INCIDENT WEST ZONE CAL FIRE IMT 1 PUBLIC INFORMATION



Incident Information Line: (530) 592-0838
Incident Media Line: (530) 588-0845

CURRENT INCIDENT STATUS	
Incident Start Date: 7/13/21	Incident Start Time: 5:15 p.m.
Cause: Under Investigation	Acres:
Containment:	Total Personnel:

MEDIA

The California State Penal Code Section 409.5(d) allows the news media to enter scenes of disaster, riot, or civil disturbance. Properly identified members of the news media should not be restricted from entering locations specified within the code. However, this does not include crime scenes, private property and does not imply that the news media may interfere with incident operations while they are in the areas of concern. More information can be found by scanning the QR code to the right with your mobile device.



CAL FIRE SOCIAL MEDIA POLICY

When assigned to a CAL FIRE incident, you will adhere to the CAL FIRE Social Media Policy, Section 0691. You can find further information about the CAL FIRE Social Media by scanning the QR code to the right with your mobile device.



FEDERAL FIRE SOCIAL MEDIA POLICY

Social media posts can reflect on the professionalism of your crew, your agency, and Wildland Firefighting Community. The U.S. Forest Service has enjoyed a reputation as the world leader in wildland firefighting for over 100 years. Protect our legacy with good conduct on the fireline and online. When assigned to a federal fire you are considered a federal employee under the delegation of authority. Even if you are a contractor, AD or from a partner agency we recommend you follow these ethics guidelines which apply to federal employees all the time.

PHOTOGRAPHS AND VIDEOS OF INCIDENT

The Public Information Office would like copies of the video and pictures that you safely took while not in an emergency, fire suppression activity or in an overhead assignment. Bring your video and pictures to the Public Information trailer; they will be reviewed and possibly uploaded to our many CAL FIRE social media sites. Remember, we don't want photographs or videos that depict unsafe, unprofessional, or embarrassing circumstances, which are a serious breach of ethics. You can email the photos to: dixiefire2021@gmail.com.

LOST AND FOUND

The Information Section will manage lost and found items for the incident, located at the PIO Trailer by fuel.



Incident
Update

<p>PICK UP PACKAGES AT THE PIO TRAILER BY FUEL</p> <p>ATTN: Recipients Name and E/O-number</p> <p>Dixie Fire PIO Trailer</p> <p>1620 Riverside Dr</p> <p>Susanville, CA 96130</p>



EVAC
Map

*** Mail delivered to the Fairgrounds will be transferred daily to the PIO trailer by fuel ***



DIXIE INCIDENT CAL FIRE IMT 1 FINANCE MESSAGE



FINANCE SECTION

Located in trailer row near the Feeding area

COST SHARE REPORTING

PHONE: 925-532-5438

This is a cost share fire. All line supervisors (DIVS, OPBD, STAM, etc.) need to check in with the Cost Share Team (CATS) each day at the end of your shift. The Cost Share Team (CATS) is located Susanville Base Camp.

- ❖ Please report IN PERSON to the Cost Share Team at the end of your shift.
- ❖ East Zone Cost Share Reporting: 925-532-5610

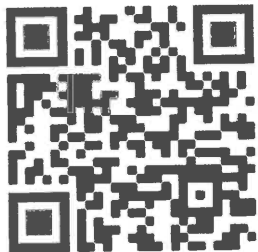
TIME UNIT

- CAL FIRE PERSONNEL – make sure you have started your eFC-33's and update after each shift. Please make sure E-Pay schedules are up to date. An E-Pay Café is set up outside the time trailer.
- HIRED EQUIPMENT SUPPLIERS – Check in with the Time Unit and drop off your agreements.
- DIVISION GROUP SUPERVISORS / LINE SUPERVISORS – Please make sure to turn in fire equipment shift tickets at the end of each shift.
- OES / LOCAL GOVERNMENT / EMAC RESOURCES – Please see the OES representatives in the OES Comm Unit to track time.

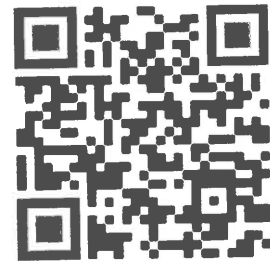
COMP / CLAIMS

To report any property damage and suppression repair needs or water use please use the below QR codes:

PROPERTY DAMAGE QR CODE



WATER USE REPORT



SHIFT TICKET EXAMPLE

EMERGENCY SHIFT TICKET and EVALUATION FORM						Contractor Name	
Incident or Project Name LILAC INC		Incident Number CAMVU 024612		Request Number E #		H2O DUDE	
Agreement Number MEU - 0000012345						Operator #1 JOHN HANKS	
Equipment Make FREIGHTLINER						Operator #2 JOHN HANKS	
Equipment Model / Type WATER TENDER 2500+ TYPE 1						Operator Furnished By: <input checked="" type="checkbox"/> Contractor <input type="checkbox"/> Government	
Serial Number VIN#						Operating Supplies Furnished By: <input checked="" type="checkbox"/> Contractor <input type="checkbox"/> Government	
Licence Number 55555555						Equipment Status <input checked="" type="checkbox"/> Inspected <input checked="" type="checkbox"/> Under Agreement	
Equipment Use (Circle) Hours Days / Miles						Released by Government <input type="checkbox"/> Withdrawn by Contractor <input type="checkbox"/>	
Date	Start	Stop	Work	Assignment		Remarks/Comments **	
12/8	0700	1900	12	DIV A		ONE OPERATOR	
12/8	1900	2400	5	OFF SHIFT			
12/9	0001	0700	7	OFF SHIFT			
Vendor Rating						Govt. Rep. Name and Position - PRINT Mike Weber - DIVS	
Met Performance Expectations						Govt. Rep. Signature <i>Mike Weber</i>	
Equipment in Safe Working Condition						Contractor Signature <i>JOHN HANKS</i>	
Operator Skill Level						Date 12/08/20	
Operates Safely						Time 1900	
Operator's Cooperation Level						Calfire 297 (Rev 3-2011)	
Overall Performance							
* NOTE: Any rating of POOR requires an explanation in Comment Section.							
**Final evaluation or for more documentation, use an ICS Form 230 or equivalent.							
Pink - Finance		Blue - Home Unit HE Coordinator		Yellow - Vendor		White - Govt Representative	

EMERGENCY SHIFT TICKET and EVALUATION FORM						Contractor Name	
The responsible Government Officer will complete this form each shift						WATER GUY	
Incident or Project Name LILAC INC		Incident Number CAMVU 024612		Request Number E #		Operator #1 BOB SMITH	
Agreement Number BTU-0000329876						Operator #2 BILL SMITH	
Equipment Make PETERBILT						Operator Furnished By: <input checked="" type="checkbox"/> Contractor <input type="checkbox"/> Government	
Equipment Model / Type WATER TENDER 2500 + TYPE 1						Operating Supplies Furnished By: <input checked="" type="checkbox"/> Contractor <input type="checkbox"/> Government	
Serial Number VIN #						Equipment Status <input checked="" type="checkbox"/> Inspected <input checked="" type="checkbox"/> Under Agreement	
Licence Number 9999999						Released by Government <input type="checkbox"/> Withdrawn by Contractor <input type="checkbox"/>	
Equipment Use (Circle) Hours Days / Miles						Remarks/Comments **	
Date	Start	Stop	Work	Assignment		2 OPERATORS	
12/8	0700	2400	17	DIV M			
12/9	0001	0700	7	DIV M			
Vendor Rating						Govt. Rep. Name and Position - PRINT Mike Weber - DIVS	
Met Performance Expectations						Govt. Rep. Signature <i>Mike Weber</i>	
Equipment in Safe Working Condition						Contractor Signature <i>Bill Smith</i>	
Operator Skill Level						Date 12/09/20	
Operates Safely						Time 0700	
Operator's Cooperation Level						Calfire 297 (Rev 3-2011)	
Overall Performance							
* NOTE: Any rating of POOR requires an explanation in Comment Section.							
**Final evaluation or for more documentation, use an ICS Form 230 or equivalent.							
Pink - Finance		Blue - Home Unit HE Coordinator		Yellow - Vendor		White - Govt Representative	

Turn shift tickets into Finance.

SHIFT TICKET EXAMPLE

EMERGENCY SHIFT TICKET and EVALUATION FORM					Contractor Name BIG AL EXCAVATING							
Incident or Project Name TUBBS		Incident Number CALNU010045	Request Number E#		Operator #1 BOB SMITH	Operator #2 CHRIS SMITH						
Agreement Number CZU-0000023987					Operator Furnished By: <input checked="" type="checkbox"/> Contractor <input type="checkbox"/> Government							
Equipment Make CAT		Equipment Model / Type D6M, DZR type 2			Operating Supplies Furnished By: <input checked="" type="checkbox"/> Contractor <input type="checkbox"/> Government							
Serial Number 678432		Licence Number N/A			Equipment Status <input checked="" type="checkbox"/> Inspected <input checked="" type="checkbox"/> Under Agreement <input type="checkbox"/> Released by Government <input type="checkbox"/> Withdrawn by Contractor							
Equipment Use (Circle) Hours Days / Miles					Remarks/Comments ** 2 OPERATORS							
Date Mo / Day	Start	Stop	Work	Assignment								
8/3	0700	2400	17	DIV M								
8/4	0001	0700	7	DIV M								
Vendor Rating					Govt. Rep. Name and Position - PRINT Mike Weber - HEQB							
<table border="1"> <tr> <td></td> <td>Poor*</td> <td>Avg.</td> <td>Good</td> <td>Exc.</td> <td>N/A</td> </tr> </table>						Poor*	Avg.	Good	Exc.	N/A	Govt. Rep. Signature <i>Mike Weber</i>	
	Poor*	Avg.	Good	Exc.	N/A							
Met Performance Expectations					Contractor Signature <i>Bob Smith</i>							
Equipment in Safe Working Condition					Date 08/04/20 Time 0700							
Operator Skill Level					Overall Performance							
Operates Safely					* NOTE: Any rating of POOR requires an explanation in Comment Section.							
Operator's Cooperation Level					**Final evaluation or for more documentation, use an ICS Form 230 or equivalent.							
Overall Performance					CALFIRE 297 (Rev 3-2011)							
Pink - Finance		Blue - Home Unit HE Coordinator		Yellow - Vendor		White - Govt Representative						

EMERGENCY SHIFT TICKET and EVALUATION FORM					Contractor Name BIG AL EXCAVATING							
The responsible Government Officer will complete this form each shift					Operator #1 BOB SMITH							
Incident or Project Name TUBBS		Incident Number CALNU010045	Request Number E #		Operator #2 CHRIS SMITH							
Agreement Number CZU-0000023987					Operator Furnished By: <input checked="" type="checkbox"/> Contractor <input type="checkbox"/> Government							
Equipment Make KENWORTH		Equipment Model / Type 18 WHEEL TRANSPORT			Operating Supplies Furnished By: <input checked="" type="checkbox"/> Contractor <input type="checkbox"/> Government							
Serial Number VIN #		Licence Number 9999999			Equipment Status <input checked="" type="checkbox"/> Inspected <input checked="" type="checkbox"/> Under Agreement <input type="checkbox"/> Released by Government <input type="checkbox"/> Withdrawn by Contractor							
Equipment Use (Circle) Hours Days / Miles					Remarks/Comments ** 2 OPERATORS							
Date Mo / Day	Start	Stop	Work	Assignment								
8/3	0700	2400	17	DIV M								
8/4	0001	0700	7	DIV M								
Vendor Rating					Govt. Rep. Name and Position - PRINT Mike Weber - HEQB							
<table border="1"> <tr> <td></td> <td>Poor*</td> <td>Avg.</td> <td>Good</td> <td>Exc.</td> <td>N/A</td> </tr> </table>						Poor*	Avg.	Good	Exc.	N/A	Govt. Rep. Signature <i>Mike Weber</i>	
	Poor*	Avg.	Good	Exc.	N/A							
Met Performance Expectations					Contractor Signature <i>Bob Smith</i>							
Equipment in Safe Working Condition					Date 08/04/15 Time 0800							
Operator Skill Level					Overall Performance							
Operates Safely					* NOTE: Any rating of POOR requires an explanation in Comment Section.							
Operator's Cooperation Level					**Final evaluation or for more documentation, use an ICS Form 230 or equivalent.							
Overall Performance					CALFIRE 297 (Rev 3-2011)							
Pink - Finance		Blue - Home Unit HE Coordinator		Yellow - Vendor		White - Govt Representative						

Turn shift tickets into Finance.



FEDERAL FINANCE MESSAGE

**Finance is now accepting electronic submission of CTR's and Shift Tickets
via email/scan to:**

2021.dixie.ca.finance@firenet.gov

How to E-mail documents: scan the QR code below email your scanned documents

****NOTE: YOUR DOCUMENTATION MUST BE AN ATTACHMENT, AND NOT EMBEDDED IN
BODY OF THE EMAIL****

<p style="text-align: center;">All Resources: Scan QR to E-mail Finance</p> <div style="text-align: center;">  </div> <p style="text-align: center;"><u>2021.dixie.ca.finance@firenet.gov</u> SUBJECT: Include Key Word: <i>Time</i></p>	<p style="text-align: center;">Comp/Claims: Scan QR to E-mail Finance</p> <div style="text-align: center;">  </div> <p style="text-align: center;"><u>2021.dixie.ca.finance@firenet.gov</u> SUBJECT: <i>Include key words Comp/Claims</i></p>
BE SURE TO CHECK IN WITH FINANCE WHEN YOU ARRIVE!	

FEDERAL FINANCE HOTLINE: 213-598-3680

The following resources please come see Finance:

TRAINING SPECIALIST MESSAGE

DIXIE INCIDENT CAL FIRE IMT 1



TRAINEES

END OF ASSIGNMENT CHECKLIST:

- ✓ CONFIRM ALL RELEVANT TASKS ARE INITIALED
- ✓ HAVE TRAINER COMPLETE EVALUATION RECORD IN BACK OF PTB
- ✓ HAVE TRAINER COMPLETE EVALUATION (225)
- ✓ COMPLETE EXIT INTERVIEW WITH TNSP SHOP

TRAINERS

END OF ASSIGNMENT CHECKLIST:

- ✓ SIGN TRAINEE PTB
- ✓ COMPLETE EVALUATION RECORD
- ✓ COMPLETE 225



**IF IT'S NOT WRITTEN DOWN,
IT DIDN'T HAPPEN!**

Shane Galvez
TNSP

Shane.Galvez@Fire.Ca.Gov

FIRING OPERATION CHECKLIST

Location: _____

Date: _____ Time: _____

Firing Supervisor _____

1. Personnel Briefing

- Objectives
- Conditions (weather, fuel, burn window)
- Resource assignments
 - Firing personnel
 - Holding forces
 - Lookouts
- Ignition plan/sequence
- Communication Plan
- Contingency Plan
- Safety issues

2. Go / No-Go

- All personnel briefed
- Weather forecast reviewed
- Resources in place
- Lookouts posted as needed
- Anchor and termination firing points identified
- Communications systems in place
- Fire behavior forecast reviewed
- Escape routes and safety zones established and made known
- Adjoining forces/Air Attack notified

3. Supervisor's Approval Prior To Firing

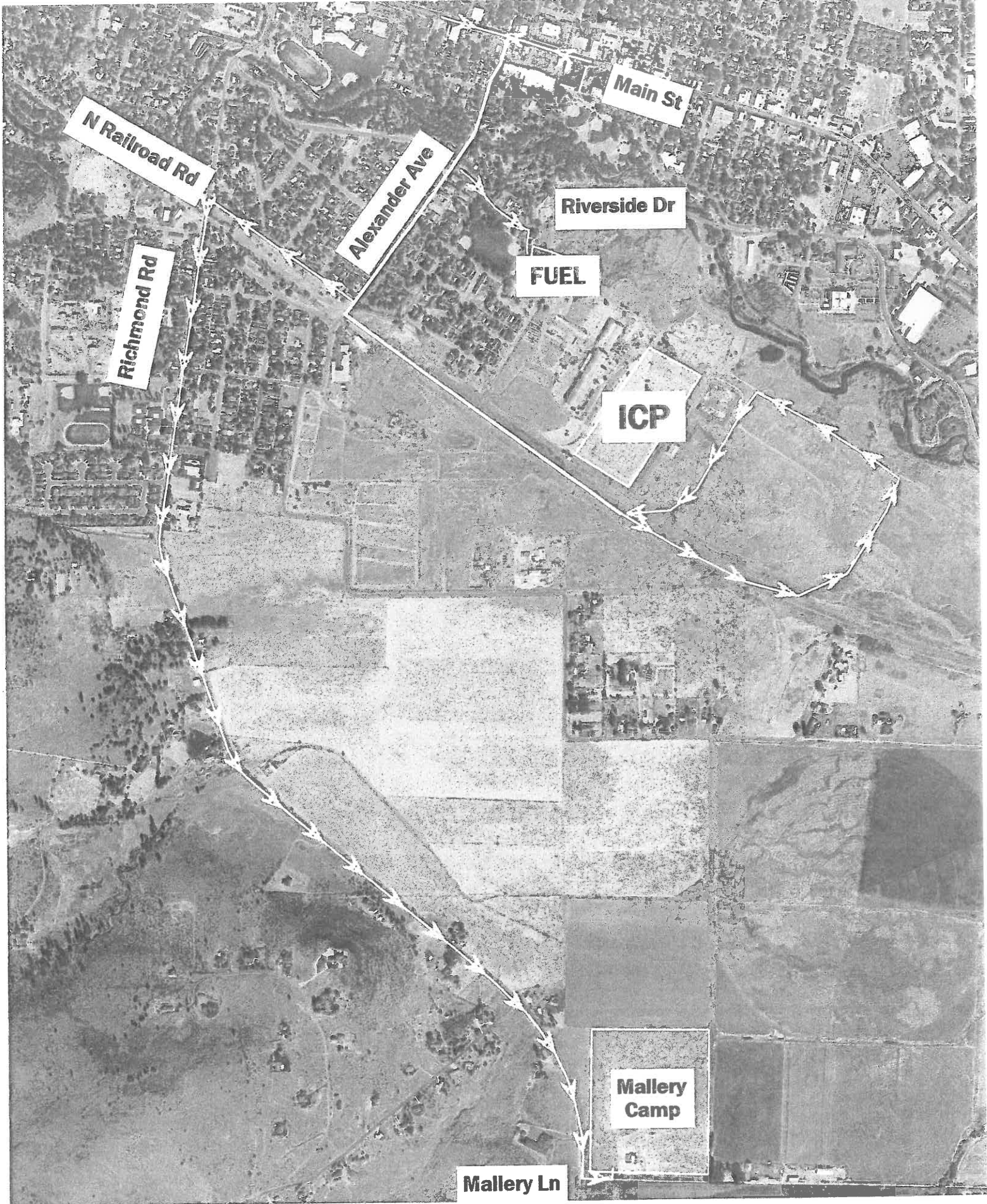
- Division Supervisor
- Branch Director
- Operations Section Chief

4. Other Notifications

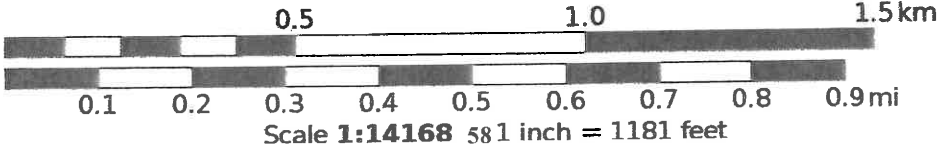
- Other: _____
- Other: _____

Attach Firing Operations Checklist to ICS-214

Rev: Ops Group February 8, 2011



Mercator Projection
WGS84
USNG 10TFK-10TGK
SARTOPO



MALLERY CAMP

EXIT

TENT
SLEEPING

SLEEPERS

SHOWERS

LAUNDRY

ENGINE PARKING

VENDOR
STAGING

HEAVY
EQUIPMENT
PARKING

VENDOR
SLEEPING

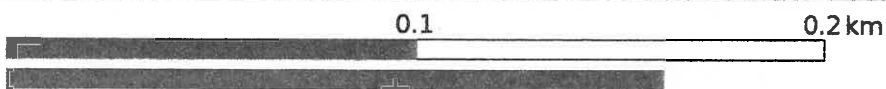
NO PARKING

CCC

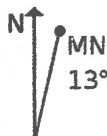
MALLERY LANE

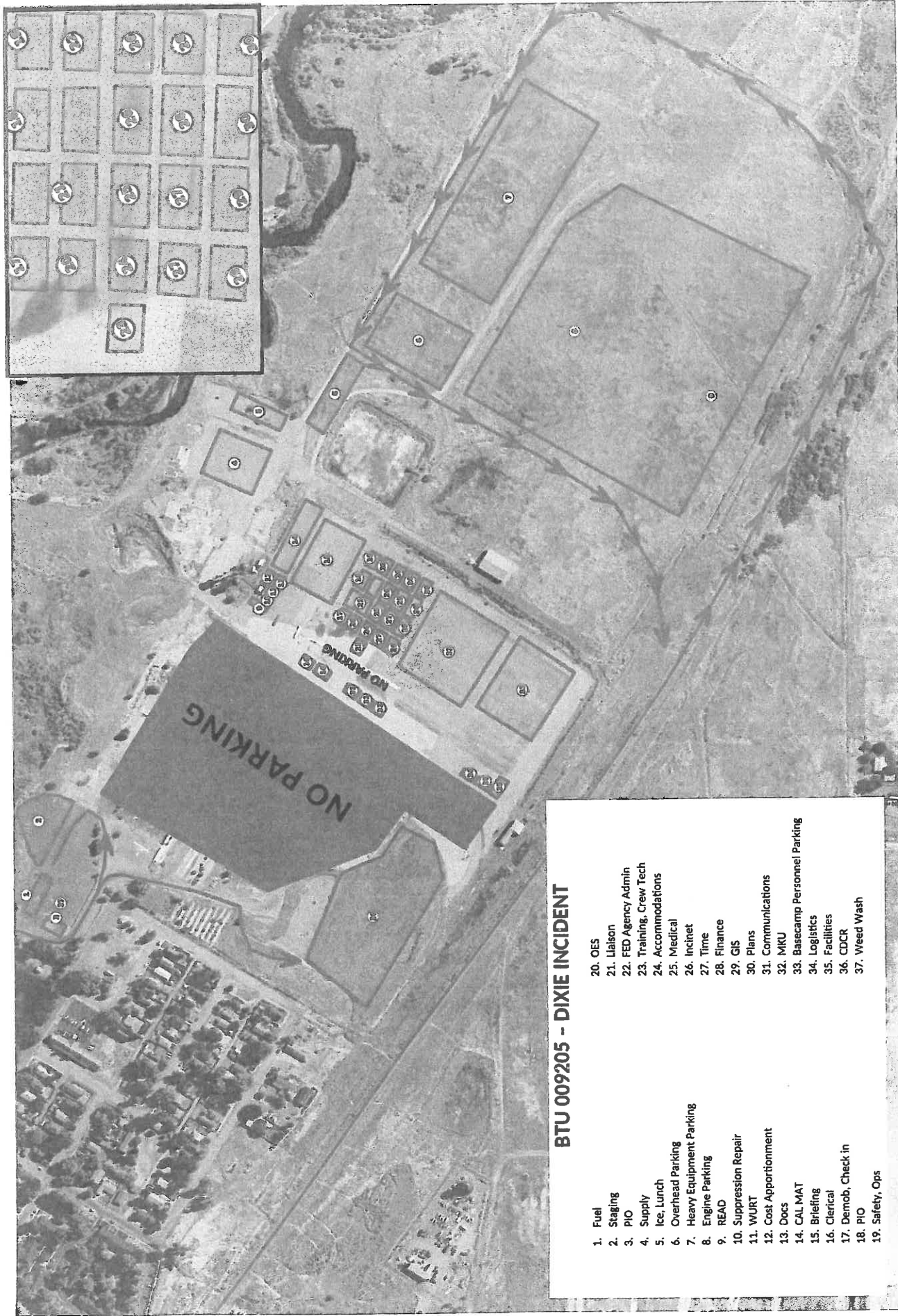
RICHMOND RD

Mercator Projection
WGS84
USNG Zone 10TFK
SARTOPO



Scale 1:1975 1 inch = 165 feet





- BTU 009205 - DIXIE INCIDENT**
- | | |
|----------------------------|--------------------------------|
| 1. Fuel | 20. OES |
| 2. Staging | 21. Liaison |
| 3. PIO | 22. FED Agency Admin |
| 4. Supply | 23. Training, Crew Tech |
| 5. Ice, Lunch | 24. Accommodations |
| 6. Overhead Parking | 25. Medical |
| 7. Heavy Equipment Parking | 26. Inclinat |
| 8. Engine Parking | 27. Time |
| 9. READ | 28. Finance |
| 10. Suppression Repair | 29. GIS |
| 11. WURT | 30. Plans |
| 12. Cost Apportionment | 31. Communications |
| 13. Docs | 32. MKU |
| 14. CAL MAT | 33. Basecamp Personnel Parking |
| 15. Briefing | 34. Logistics |
| 16. Clerical | 35. Facilities |
| 17. Demob, Check in | 36. CDCR |
| 18. PIO | 37. Weed Wash |
| 19. Safety, Ops | |

Mercator Projection
 WGS84
 USNG 10TFK-10TGK
 SARTOPO

Scale 1:5621 1 inch = 468 feet

1.0 km
 0.9
 0.8
 0.7
 0.6
 0.5
 0.4
 0.3
 0.2
 0.1

0.6 mi
 0.5
 0.4

13° MN

DIXIE FIRE : PN N5ZB21 (1522)

CA-BTU-009205

INCIDENT ACTION PLAN



DIXIE FIRE EAST ZONE

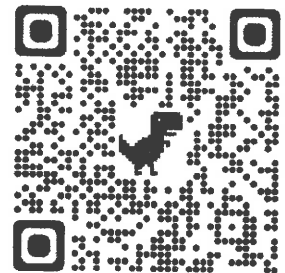
SUNDAY – SEP 05 2021

GPS Format NAD83 Degrees Decimal Minutes

MEETING SCHEDULE

- 0700 Morning Briefing
- 0900 Cooperators Meeting
- 1200 C&G
- 1700 Pre-Planning Meeting
- 1800 Planning Meeting
- 1900 Night Operations Briefing

- Dixie EAST Zone:
Remote Incident Briefing Access
- IAP's and Maps
- Demob List
- Trainee Sign-up/Closeout



WEST Zone IAP, Maps,
Briefing



