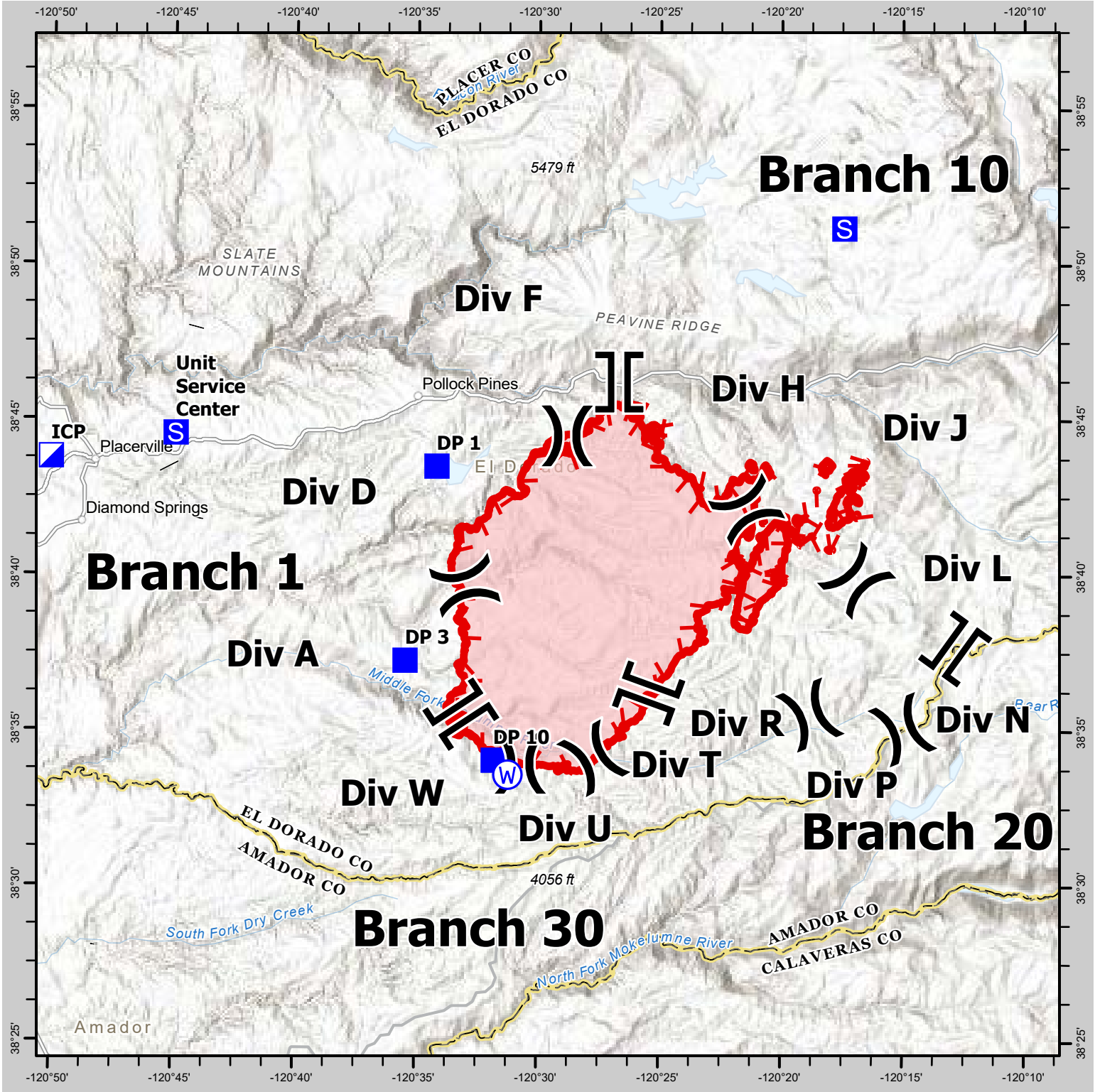




CALDOR INCIDENT BRIEFING MAP

CA ENF 24030 - 8/19/2021



CAL FIRE - INCIDENT MANAGEMENT TEAM 6

Established 1994

<ul style="list-style-type: none"> Uncontrolled Fire Edge Contained Line Helibase Helispot 	<ul style="list-style-type: none"> County Boundary Completed Dozer Line Drop Point Dip Site Division Break Branch Break 	<ul style="list-style-type: none"> Repeater Fire Point Mobile Weather Unit Spot Fire Restricted Water Source Mobile Ret. Base
--	---	---

IMT 6 GISS
 8/18/2021
 2202 Hours
 NAD 83 Teale Albers

DISCLAIMER:
 The displayed incident data is approximate and should only be used for informational purposes. The information contained in this report was generated from GIS data maintained by the Incident Management Team and is not necessarily accurate to mapping, surveying, or engineering standards.