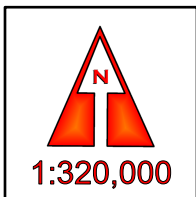
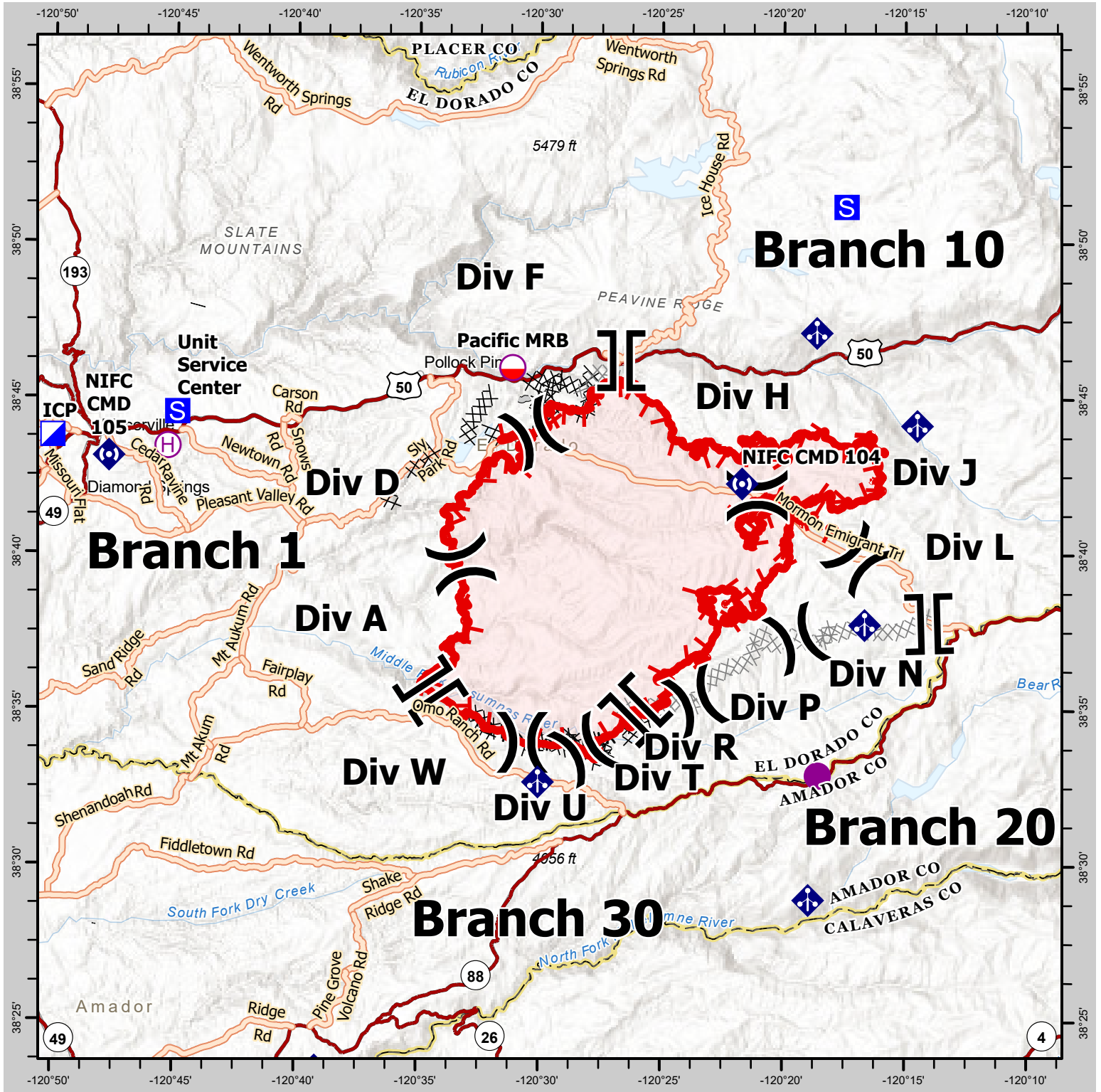


# CALDOR INCIDENT BRIEFING MAP

CA ENF 24030 - 8/21/2021



0 2.5 5 10 15 Miles

Uncontrolled Fire Edge	County Boundary	Drop Point	Division Break	Fire Point	Spot Fire
Contained Line	Completed Dozer Line	Dip Site	Branch Break	Mobile Weather Unit	Restricted Water Source
Helibase				Repeater	Mobile Ret. Base
Helispot					

**CAL FIRE - INCIDENT MANAGEMENT TEAM 6**  
Established 1994

IMT 6 GISS  
8/20/2021  
2112 Hours  
NAD 83 Teale Albers

DISCLAIMER:  
The displayed incident data is approximate and should only be used for informational purposes. The information contained in this document is for informational purposes only and is not necessarily accurate for mapping, surveying, or engineering activities.