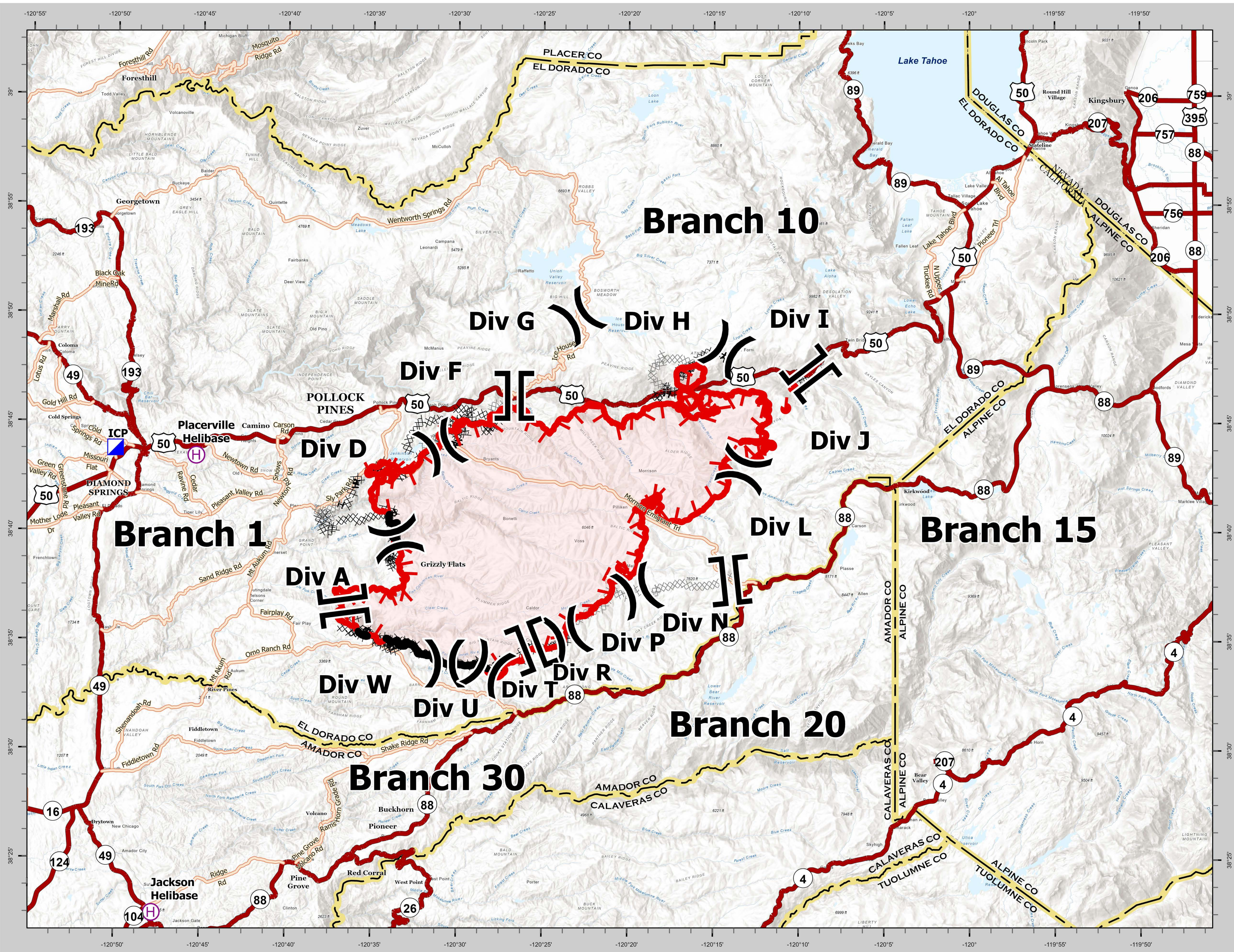




# CALDOR INCIDENT BRIEFING MAP

## CA ENF 024030 8/24/2021



	Division Break		Incident Command Post		Fire Edge		Planned Dozer Line		Wildfire Daily Fire Perimeter
	Branch Break		Helibase		Contained Line		Completed Dozer Line		State or Territory
					Completed Hand Line				County or Equivalent
					Completed Road as Line				

**CAL FIRE - INCIDENT MANAGEMENT TEAM 6**

*Established 1994*

IMT 6 GISS  
8/23/2021  
2200 Hours  
NAD 83 Teale Albers

DISCLAIMER: The displayed incident data is approximate and should only be used for informational purposes. The information contained in this briefing base layer was generated from GIS data maintained by different sources and agencies and is not necessarily accurate to mapping, surveying, or engineering standards.