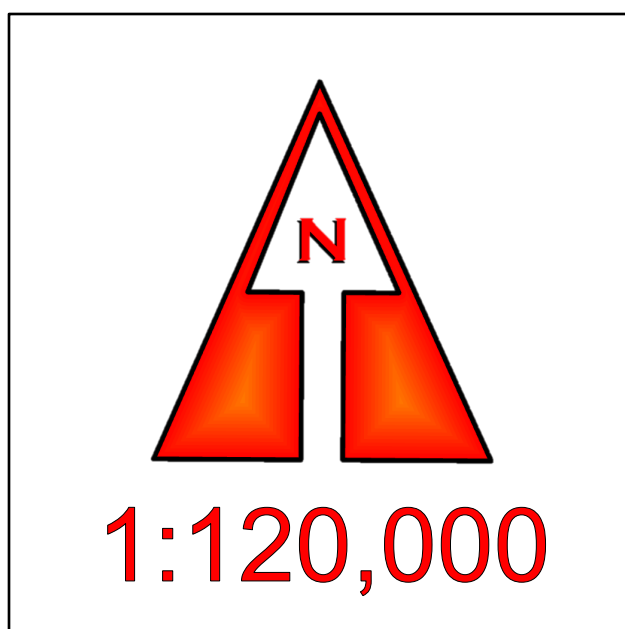
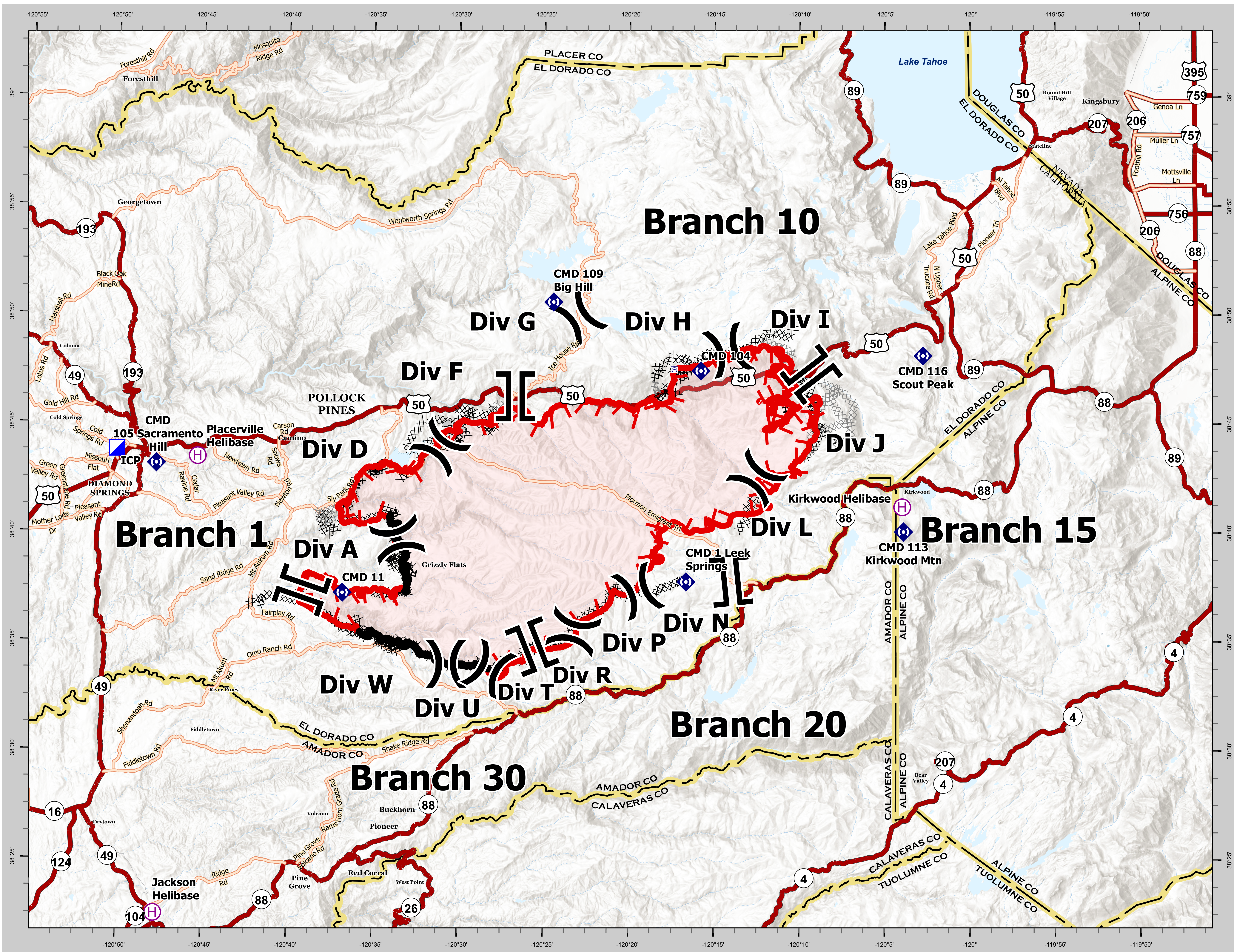


# CALDOR INCIDENT BRIEFING MAP

## CA ENF 024030 8/27/2021



- |                         |                          |                           |                     |
|-------------------------|--------------------------|---------------------------|---------------------|
| Branch Break            | XX Completed Dozer Line  | H Planned Hand Line       | --- State Boundary  |
| ) Division Break        | XX Planned Dozer Line    | — Access or Improved Road | --- County Boundary |
| ⊕ Helibase              | W Completed Fuel Break   | — Fire Edge               |                     |
| ⊕ Incident Command Post | — Completed Hand Line    | — Contained Line          |                     |
| ⊕ Repeater              | R Completed Road as Line | — Fire Perimeter          |                     |

**CAL FIRE - INCIDENT MANAGEMENT TEAM 6**

*Established 1994*

IMT 6 GISS  
8/26/2021  
2331 Hours  
NAD 83 Teale Albers

DISCLAIMER: The displayed incident data is approximate and should only be used for informational purposes. The information contained in this briefing map was generated from GIS data maintained by different sources and agencies and is not necessarily accurate to mapping, surveying, or engineering standards.