

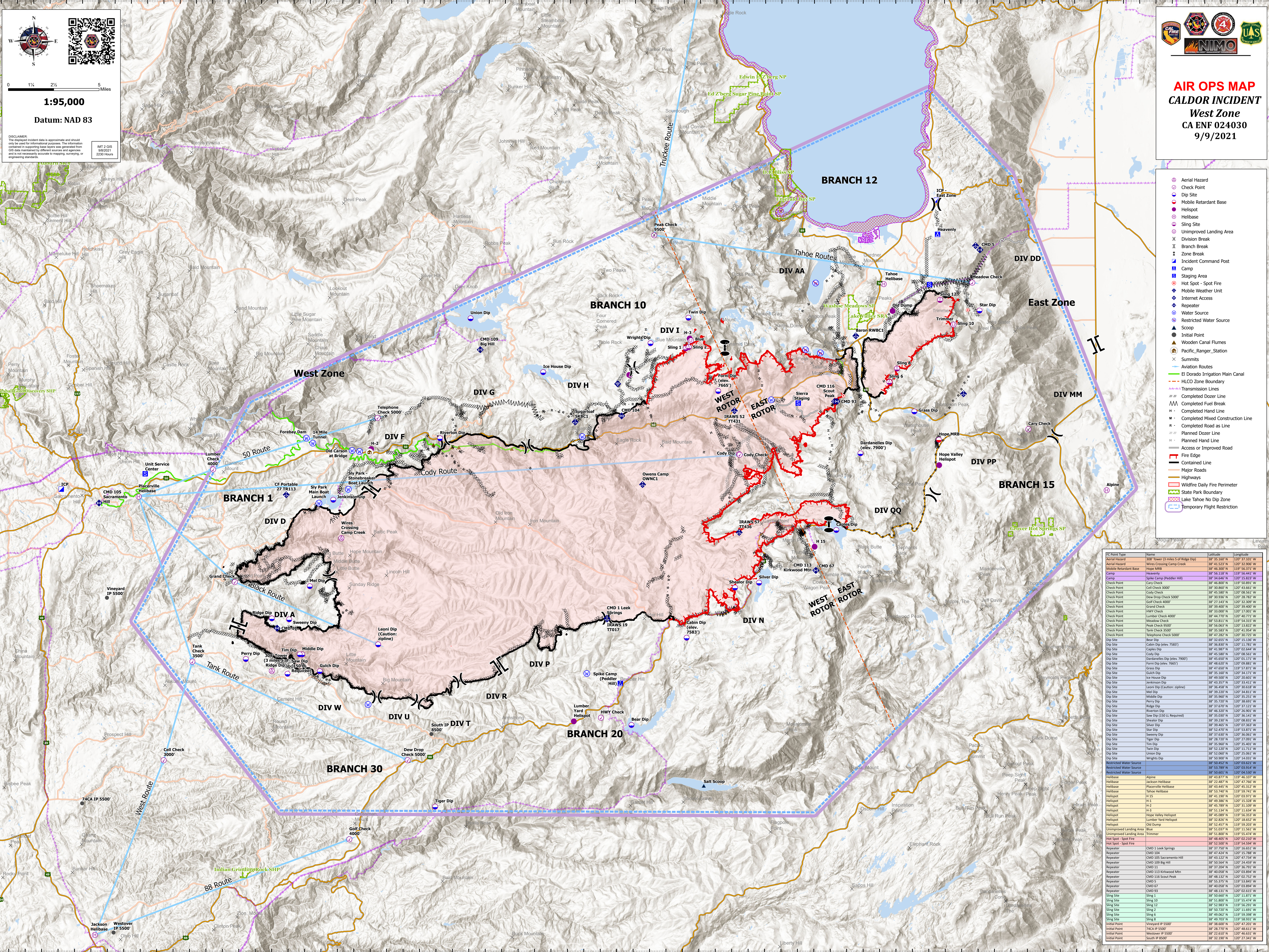
1:95,000
Datum: NAD 83

DISCLAIMER
The CalFire incident data is approximate and should only be used for informational purposes. The information contained herein is not intended to be used as a substitute for professional engineering or other services. The information is provided as is without warranty of any kind, either expressed or implied, including but not limited to the accuracy, completeness, or reliability of the information. The user assumes all liability for any use of the information.

MT 3-016
08/2021
2230 Hours



AIR OPS MAP
CALDOR INCIDENT
West Zone
CA ENF 024030
9/9/2021



- Aerial Hazard
- Check Point
- Dip Site
- Mobile Retardant Base
- Helispot
- Helibase
- Sling Site
- Unimproved Landing Area
- X Division Break
- II Branch Break
- I Zone Break
- Incident Command Post
- Camp
- Staging Area
- Hot Spot - Spot Fire
- Mobile Weather Unit
- Internet Access
- Repeater
- Water Source
- Restricted Water Source
- Scoop
- Initial Point
- Wooden Canal Flumes
- Pacific_Ranger_Station
- Summits
- Aviation Routes
- El Dorado Irrigation Main Canal
- HLCO Zone Boundary
- Transmission Lines
- Completed Dozer Line
- Completed Fuel Break
- Completed Hand Line
- Completed Mixed Construction Line
- Completed Road as Line
- Planned Hand Line
- Access or Improved Road
- Fire Edge
- Contained Line
- Major Roads
- Highways
- Wildfire Daily Fire Perimeter
- State Park Boundary
- Lake Tahoe No Dip Zone
- Temporary Flight Restriction

IC Point Type	Name	Latitude	Longitude
Aerial Hazard	300' Lower (3 miles S of Ridge Dip)	38° 35.160' N	120° 37.501' W
Aerial Hazard	West Crossing Camp Creek	38° 43.533' N	120° 23.906' W
Mobile Retardant Base	Hope MRB	38° 48.300' N	119° 56.371' W
Camp	Heavenly	38° 56.118' N	119° 56.441' W
Camp	Spice Camp (Piedler Hill)	38° 54.645' N	120° 55.823' W
Check Point	Cary Check	38° 48.800' N	119° 50.891' W
Check Point	Cell Check 3000'	38° 30.860' N	120° 43.661' W
Check Point	Cody Check	38° 45.960' N	120° 08.561' W
Check Point	Dew Drop Check 5000'	38° 30.930' N	120° 28.782' W
Check Point	Gold Check 4000'	38° 27.143' N	120° 32.309' W
Check Point	Grand Check	38° 29.400' N	120° 39.400' W
Check Point	HWY Check	38° 33.000' N	120° 37.001' W
Check Point	Lumber Check 4000'	38° 46.790' N	120° 40.771' W
Check Point	Meadow Check	38° 53.811' N	119° 54.315' W
Check Point	Peak Check 9500'	38° 56.063' N	120° 13.827' W
Check Point	Tank Check 3500'	38° 55.850' N	120° 41.554' W
Check Point	Telephone Check 5000'	38° 47.282' N	120° 30.725' W
Dip Site	Bear Dip	38° 32.655' N	120° 15.136' W
Dip Site	Cabin Dip (elev. 7983')	38° 45.890' N	120° 11.781' W
Dip Site	Cables Dip	38° 41.987' N	120° 02.644' W
Dip Site	Cody Dip	38° 45.580' N	120° 08.561' W
Dip Site	Dardanelles Dip (elev. 7900')	38° 45.650' N	120° 01.172' W
Dip Site	Form Dip (elev. 7665')	38° 48.620' N	120° 09.881' W
Dip Site	Grass Dip	38° 47.650' N	119° 57.871' W
Dip Site	Ice House Dip	38° 45.160' N	120° 34.171' W
Dip Site	Ice House Dip	38° 48.500' N	120° 20.601' W
Dip Site	Jenkinson Dip	38° 43.357' N	120° 33.411' W
Dip Site	Leon Dip (Caution: zipline)	38° 45.458' N	120° 30.618' W
Dip Site	Mel Dip	38° 39.220' N	120° 34.811' W
Dip Site	Middle Dip	38° 35.360' N	120° 35.251' W
Dip Site	Perry Dip	38° 35.720' N	120° 38.691' W
Dip Site	Ridge Dip	38° 37.670' N	120° 37.121' W
Dip Site	Swamy Dip	38° 43.300' N	120° 26.901' W
Dip Site	Saw Dip (150 LL Required)	38° 35.030' N	120° 36.141' W
Dip Site	Shalor Dip	38° 39.230' N	120° 08.831' W
Dip Site	Star Dip	38° 50.460' N	120° 21.051' W
Dip Site	Star Dip	38° 52.470' N	119° 53.971' W
Dip Site	Sweeney Dip	38° 37.630' N	120° 36.061' W
Dip Site	Tim Dip	38° 35.790' N	120° 37.051' W
Dip Site	Tim Dip	38° 35.960' N	120° 35.401' W
Dip Site	Twin Dip	38° 52.100' N	120° 11.711' W
Dip Site	Union Dip	38° 52.960' N	120° 25.061' W
Dip Site	Wrights Dip	38° 50.900' N	120° 14.031' W
Restricted Water Source		38° 50.450' N	120° 03.621' W
Restricted Water Source		38° 51.790' N	120° 03.914' W
Restricted Water Source		38° 50.601' N	120° 04.510' W
Helibase	Alpine	38° 43.877' N	119° 46.107' W
Helibase	Jackson Helibase	38° 22.483' N	120° 47.766' W
Helibase	Placerville Helibase	38° 43.445' N	120° 45.313' W
Helibase	Tahoe Helibase	38° 53.740' N	120° 59.161' W
Helispot	H 15	38° 41.190' N	120° 03.971' W
Helispot	H 1	38° 49.386' N	120° 15.128' W
Helispot	H 2	38° 45.768' N	120° 31.109' W
Helispot	H 3	38° 51.134' N	120° 11.634' W
Helispot	Hope Valley Helispot	38° 45.089' N	119° 56.333' W
Helispot	Lumber Yard Helispot	38° 45.950' N	120° 38.651' W
Helispot	Old Dump	38° 52.453' N	119° 59.203' W
Unimproved Landing Area	Blue	38° 53.037' N	120° 11.561' W
Unimproved Landing Area	Trimmer	38° 53.800' N	119° 55.474' W
Hot Spot - Spot Fire		38° 48.400' N	120° 02.210' W
Hot Spot - Spot Fire		38° 37.750' N	120° 36.651' W
Repeater	CMD 1 Leek Springs	38° 47.424' N	120° 15.788' W
Repeater	CMD 104	38° 43.123' N	120° 47.731' W
Repeater	CMD 109 Big Hill	38° 50.564' N	120° 24.459' W
Repeater	CMD 111	38° 37.204' N	120° 36.791' W
Repeater	CMD 113 Kirkwood Mtn	38° 40.058' N	120° 03.984' W
Repeater	CMD 116 Scout Peak	38° 48.132' N	120° 02.752' W
Repeater	CMD 5	38° 55.375' N	119° 53.843' W
Repeater	CMD 93	38° 40.768' N	120° 03.984' W
Repeater	CMD 93	38° 48.133' N	120° 02.635' W
Sling Site	Sling 10	38° 50.660' N	120° 11.871' W
Sling Site	Sling 10	38° 53.800' N	119° 55.474' W
Sling Site	Sling 12	38° 52.883' N	119° 56.291' W
Sling Site	Sling 2	38° 50.720' N	120° 11.691' W
Sling Site	Sling 5	38° 49.642' N	119° 59.396' W
Sling Site	Sling 8	38° 48.703' N	119° 58.931' W
Initial Point	Vineyard IP 5500'	38° 36.600' N	120° 47.201' W
Initial Point	74CA IP 5500'	38° 38.770' N	120° 46.411' W
Initial Point	Westover IP 5500'	38° 22.610' N	120° 46.631' W
Initial Point	South IP 8500'	38° 32.190' N	120° 27.141' W