

BRANCH 1

DIV D

DIV A

DIV P

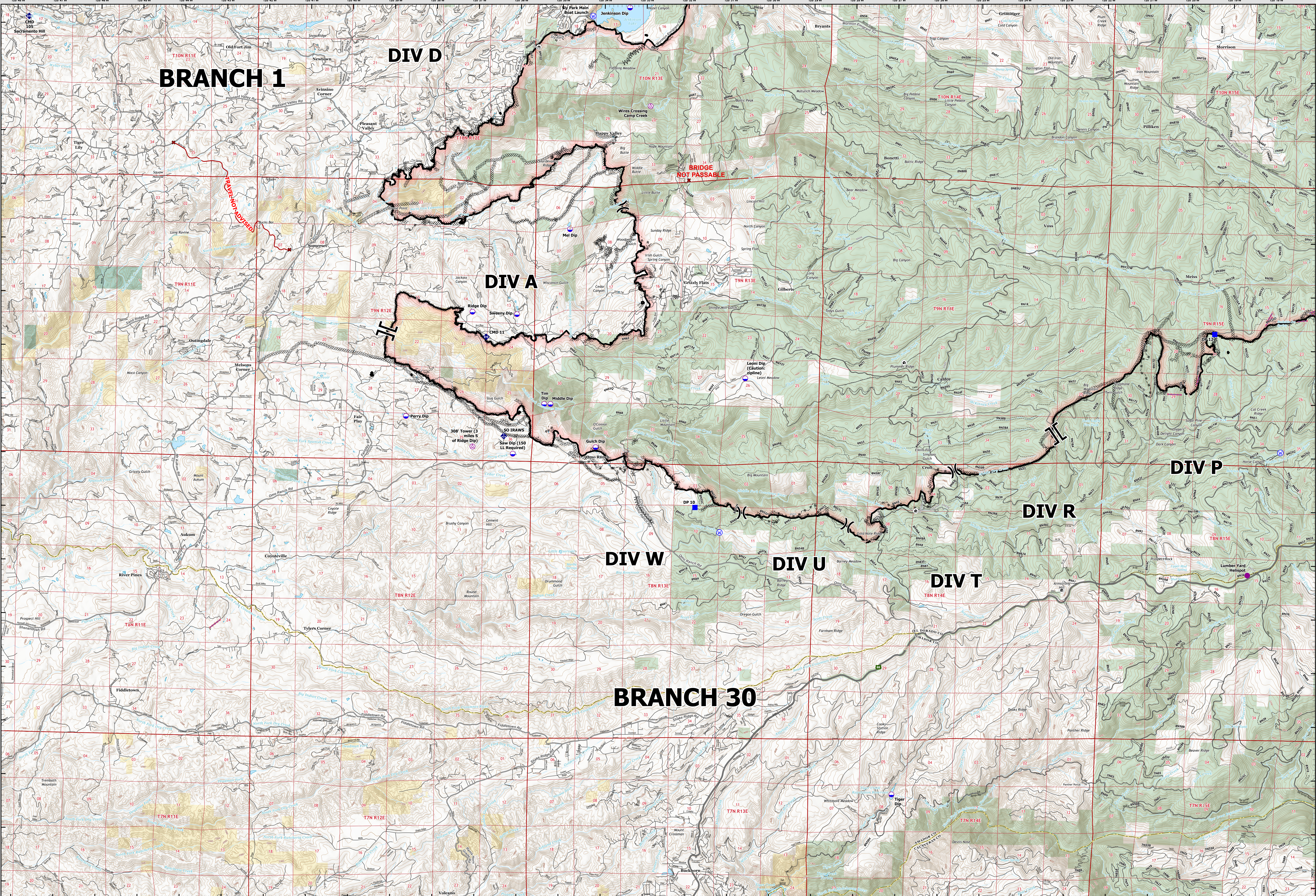
DIV R

DIV W

DIV U

DIV T

BRANCH 30



OPS MAP
BRANCH 30
CALDOR INCIDENT
WEST ZONE
CA ENF 024030
September 13, 2021

1:38,000
Datum: NAD 83
0 1 2 4 Miles

OPERATIONS MAP
BRANCH 30
Caldor Incident
West Zone
CA ENF 024030
September 13, 2021

<ul style="list-style-type: none"> ● Historic Structures ✘ DO NOT TRAVEL ⚡ Buckle Bar Rail ⚡ Aerial Hazard ⚡ Dip Site ● Helispot 	<ul style="list-style-type: none"> ○ Helibase ⌘ Division Break ⌘ Branch Break ⌘ Drop Point ⌘ Mobile Weather Unit ⌘ Repeater ⌘ Water Source 	<ul style="list-style-type: none"> ⌘ Completed Dozer Line ⌘ Completed Fuel Break ⌘ Completed Hand Line ⌘ Completed Mixed Construction Line ⌘ Completed Road as Line ⌘ Planned Dozer Line ⌘ Access or Improved Road 	<ul style="list-style-type: none"> ⌘ Retardant Drop ⌘ Contained Line ⌘ Wildfire Daily Fire Perimeter ⌘ Bureau of Land Management ⌘ Bureau of Reclamation ⌘ Local Government ⌘ Non-Profit Conservancies and Trusts 	<ul style="list-style-type: none"> ⌘ Other Federal Lands ⌘ Other State Lands ⌘ USDA Forest Service ⌘ Pacific Ranger Station ⌘ USFS Wilderness ⌘ USFS Conservancies and Trusts
--	---	---	--	---

DISCLAIMER: The displayed incident data is approximate and should only be used for informational purposes. The information contained in supporting base layers was generated from GIS data maintained by different sources and agencies and is not necessarily accurate to mapping, surveying, or engineering standards.

OPS MAP
BRANCH 30
CALDOR INCIDENT
WEST ZONE
CA ENF 024030
September 13, 2021