

INCIDENT ACTION PLAN

CALDOR INCIDENT

CA-ENF-024030
P5N8GM21

Wednesday



OPERATIONAL PERIOD

8/25/2021 0700
to
8/26/2021 0700



INCIDENT OBJECTIVES (ICS 202)

1. Incident Name: <p style="text-align: center;">Caldor Incident</p>	2. Operational Period:	Date From: 8/25/2021 Time From: 0700	Date To: 8/26/2021 Time To: 0700
---	-------------------------------	---	-------------------------------------

3. Objective(s):

Management Objectives

- Provide for emergency personnel and public safety at all times.
- Ensure COVID-19 precautions and best practices are met at all times.
- Protect property, improvements, and infrastructure.
- Ensure coordinated, timely and accurate release of public information.
- Foster and maintain relationships with all cooperators and stakeholders.
- Protect economic, natural, cultural and heritage resources.
- Maintain fiscal accountability and keep costs commensurate with values at risk.

Control Objectives

- Keep the fire North of HWY 88 and Shake Ridge Rd
- Keep the fire South of Wentworth Springs Rd
- Keep the fire East of E16 and Fiddletown Rd
- Keep the fire West of HWY 89

General Situational Awareness:

- Steep and rugged terrain, critically dry and receptive fuel beds, active area for fire history and drought stressed trees.
- In the COVID-19 environment, high density populations or large groups are particularly at risk. To help protect yourself, your family and to ensure all employees return home safely, make sure to practice social distancing.
- Enhanced hygiene (especially handwashing), PPE & monitoring practices help limit the infection rate of first responders.

5. Site Safety Plan Required? Yes No

Approved Site Safety Plan(s) Located at:

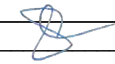
6. Incident Action Plan

<input checked="" type="checkbox"/> ICS 203	<input checked="" type="checkbox"/> ICS 220	<input checked="" type="checkbox"/> Peer Support	<input checked="" type="checkbox"/> Water Tender Travel Map
<input checked="" type="checkbox"/> ICS 204	<input checked="" type="checkbox"/> PIO Message	<input checked="" type="checkbox"/> Facilities Map	<input checked="" type="checkbox"/> Travel Map
<input checked="" type="checkbox"/> ICS 205	<input checked="" type="checkbox"/> Weather Forecast	<input checked="" type="checkbox"/> eFC-33 Input Form	<input checked="" type="checkbox"/> Base Camp Maps
<input checked="" type="checkbox"/> ICS 206	<input checked="" type="checkbox"/> Fire Behavior	<input checked="" type="checkbox"/> Shift Ticket Example	<input type="checkbox"/> Fire Suppression Repair Plan
<input checked="" type="checkbox"/> ICS 208	<input type="checkbox"/> Training Message	<input checked="" type="checkbox"/> ICS 214	<input type="checkbox"/>

7. Prepared By:	S. Sherwood	Position/Title: PSC	Signature:
8. Approved by Incident Commander:	D. Martin	Signature:	

ICS 202 NIMS IAP

ORGANIZATION ASSIGNMENT LIST (ICS 203)

1. Incident Name:		2. Operational Period: Date From: 8/25/2021		Date To: 8/26/2021	
Caldor Incident		Time From: 0700		Time To: 0700	
3. Incident Commander(s) and Command Staff:			7. Operation Section:		
IC/UC's	J. Veik / B. Newburn / D. Martin (T)		Operations	E. Schwab / D. Pereira	
Deputy	M. Marcucci / J. Janssen (T)		Deputy Operations	S. Lane / C. Bogan (T)	
Safety Officer	J. Buchmeier / J. Novak		Night Ops	T. Ernst	
Information Officer	R. Brocchini / R. Lubben				
Liaison Officer	J. Kiszka / M. Watson (T)				
4. Agency/Organization Representatives:			Branch	I	D. Esades
USFS AREP	J. Marsolais		Division/Group	A	B. Eagan
Cal Fire AREP	M. Blankenheim		Division/Group	D	S. Forman (T)
EDSO	G. Almos		Division/Group	F	P. Lohan
SPI	T. Tate		Division/Group		
PG&E	M. Webb		Branch	X	M. Wallen / S. Long (T)
COVID-19 Advisor	S. Hall		Division/Group	G	I. Stevens / S. Watkins (T)
Grizzly Flats CSD	J. Lauther		Division/Group	H	A. Estabrook / J. Novak (T)
Lake Valley Fire Dist	B. Zlendick		Division/Group	I	L. Loeffler (12)
IBA	J. Bennett		Division/Group		
Amador County Sheriff	J. Navarre		Branch	XV	B. Loomis (12)
Placerville PD	J. Wren		Division/Group	J	B. Stewart (12) L. Brown (T) (12)
CCC	H. Garcia / L. Setzer-Gonzalez		Division/Group	L	J. Chester (12)
CHP	R. Hatfield		Division/Group		
Cal Trans	G. Duffy		Division/Group		
BLM	J. Martinez		Branch	XX	
Cal OES	K. Bailey		Division/Group	N	W. Almand (12)
AT&T	K. Young		Division/Group	P	
			Division/Group	R	J. Plummer (12) / R. Hamly (T) (12)
5. Planning Section:			Division/Group		
Chief	S. Sherwood / G. Garcia		Branch	XXX	N. Hale
Deputy	D. Scheurich (T)		Division/Group	T	P. Preston (12)
Resource Unit	J. Heald / M. Thomas / J. Anderson / B. Torosian		Division/Group	U / W	A. Sigona (12) / F. Burrows (T) (12)
Situation Unit	I. Crossley / J. Abeel D. Van Goidsenhoven		Division/Group		
Demobilization Unit	J. Perez (T)		Division/Group		
GISS	C. Poli		Division/Group	El Dorado	C. Blankenheim (12) / C. Thane (12)
FBAN	S. Volmer		Staging Area	ICP	D. Hames (12)
IMET	J. Dudley		Division/Group		
Hired Equipment Tech Spec.	C. Myers / M. Meirinho (T)		Division/Group		
Crew Tech Spec.	J. Rafferty		Air Operations Branch:		Director: T. Smith / C. Inwood (T)
ENF Resource Advisors	J. House / J. Serin / K. Marti		Air Support Group Supervisor		F. Abril (T)
6. Logistics Section:			Air Tactical Group Supervisor		A. Sanchez
Chief	S. Dohman		Helibase Manager		R. Johnson
Deputy Chief	J. Warden (T)				
Supply Unit	P. Lee / B. Luiz (T)		8. Finance/Administration Section:		
Facilities Unit	J. Finley		Chief	S. Hogan	
Ground Support Unit	J. Christofferson		Deputy Chief	G. Belk	
Communications Unit	J. Brooks		Time Unit	J. Navarro / J. Andrade (T)	
Medical Unit	J. Segura / M. Hnat		Procurement Unit	M. Lamonica / H. Horn (T)	
Motel Unit	J. Tomsich / B. Strohmayer		Comp/Claims Unit	B. Stirton	
Food Unit	M. Riveria / M. Wong (T) / B. Brewer (T)		Cost Unit	J. Tapia	
Prepared By: Name:	S. Sherwood	Position/Title:	PSC	Signature: 	
ICS 203		Date/Time:	8/24/2021 2300 hours		



INCIDENT Weather Forecast

FORECAST NO: 7
PREDICTION FOR: 24 Hour Shift
SHIFT DATE: 08/25/21
FORECAST ISSUED: 08/24/21 1700

NAME OF FIRE: Caldor
UNIT: USFS Eldorado NF
SIGNED: James Dudley
Incident Meteorologist

WEATHER DISCUSSION: A weather disturbance will move across the fire area this morning bringing gusty south winds. As this feature moves away to the east winds will shift to the southwest and diminish some during the afternoon however gusty conditions will prevail over especially the ridges. High pressure will then begin to build over the region Thursday through the weekend with much lighter winds...warmer temperatures...and lower humidity with increasingly poor overnight recovery. Inversions will strengthen with longer periods of smoky conditions over the fire.

.WEDNESDAY...

Sky/weather.....Areas of smoke with inversion breaking by 0900 otherwise sunny.
Max temperature.....73-83.
Min humidity.....22-28 percent.
Wind (20 ft).....
Slope/valley.....Southeast to south 8-13 mph with gusts to 22 mph through 1100 then becoming southwest 4-9 mph with gusts to 15 mph through the afternoon.
Ridgetop.....South 17-22 mph with gusts to 30 mph through 1100 then southwest 13-18 mph with gusts to 25 mph through the afternoon.
Mixing height.....Near surface increasing to around 7000 ft AGL.
Transport winds.....Southwest around 18 mph.

.WEDNESDAY NIGHT...

Sky/weather.....Mostly clear. Areas of smoke.
Min temperature.....52-62.
Max humidity.....35-45 percent.
Wind (20 ft).....
Slope/valley.....Downslope/downcanyon 3-7 mph.
Ridgetop.....South-southwest 9-13 mph.
Mixing height.....Lowering to near surface.
Transport winds.....Southeast around 5 mph.

.THURSDAY...

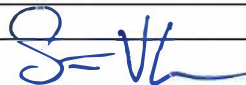
Sky/weather.....Areas of smoke with inversion breaking by 1300 otherwise sunny.
Max temperature.....77-87.
Min humidity.....16-21 percent.
Wind (20 ft).....
Slope/valley.....Downcanyon 2-6 mph through 0900 then becoming upslope/upcanyon 3-7 mph with gusts to 12 mph through the afternoon.
Ridgetop.....Southwest to west 4-7 mph.
Mixing height.....Near surface increasing to around 5600 ft AGL.
Transport winds.....South around 6 mph.

Incident Weather Station Data - SCAN Code with Smart Phone

- Branch 1: Pine Tree Rd (TR113), Hawkeye Rd (PG433)
- Branch 10: Sugarloaf (SKBC1)
- Branch 15: Owens Camp (OWNC1)
- Branch 20: Leak Peak (TT017), Eldorado Portable NE DP14(TS445)
- Branch 30: Barney Ridge (TT022), So So Road (PG415)



FIRE BEHAVIOR FORECAST

FORECAST NUMBER: 7	TYPE OF FIRE: WILDFIRE
FIRE NAME: CALDOR CAENF-024030	OPERATIONAL PERIOD: 8/25-8/26/21 0700-0700
DATE ISSUED: 8/24/2021	TIME ISSUED: 1900 
UNIT: ELDORADO NATIONAL FOREST	SIGNED: Typed/printed: Stephen Volmer FBAN

INPUTS

WEATHER SUMMARY:

Temperatures will be in the low 80's with humidity levels between 22-28%. Morning winds will be out of the south 8-13mph gusting to 22mph, becoming southwest 4-9mph after 11am. Afternoon ridgetop winds will be gusty from the southwest 13-18mph with gusts to 25mph. Winds will slow overnight returning to the diurnal flow down canyon 3-7mph and shifting up canyon in the early morning. Nighttime temperature will be in the high 50's with humidity averaging between 35-45% across the entire fire area.

****Review the weather forecast for more details****

OUTPUTS

FIRE BEHAVIOR

FUEL MODEL	RATE OF SPREAD FT/MIN	FLAME LENGTH FT	SPOTTING DISTANCE	PROBABILITY OF IGNITION
TIMBER	14	7	.8 miles	87%
UNDERSTORY	29	13	.8 miles	87%
BRUSH	95	15	.5 miles	87%

GENERAL:

*****Group tree torching is expected with rates of spread up to 120 ft/min*****

Single and group tree torching will occur due to the abundant low ladder fuels and tight canopies. Active crown fire runs will be possible in areas where the drainages are in alignment with the winds. Expect long distance spotting at the top-ends of those areas. Fuels in the area is extremely dry and receptive to ignition. Current ERC's and BI's are above the 90th percentile, 1000 hr fuels are below the 3rd percentile. Local live fuel moistures are above critical levels, but brush fields still maintain an abundant amount of dead material within them due to the prolonged drought and will produce moderate rates of spread.

SPECIFIC:

- The abundant amount of dead down material across the incident will continue to be the major source of ember cast and heat which will have the potential to threaten the control lines in all areas.
- Fire activity will moderate overnight allowing for good windows of opportunity to conduct firing operations and direct line control tactics.
- Rates of spread will increase in the dense brush fields found in Div A, Div D, and Div W where they are in alignment with the drainages and up-canyon winds.

AIR OPERATIONS:

Smoke clearing in the early morning, with increased visibility and increased fire activity by 11:00. Transport winds out of the south southwest 15mph with a mixing height of 7,000' AGL. Expect erratic winds across the ridgetops. Air resources may be limited or ineffective due to the increased winds and reduced visibility.

Sunset 19:42 Sunrise 06:27

SAFETY:

- Extremely hot deep ash pits will be found in all areas. Watch where you are walking and working.
- Be alert. Keep calm. Think clearly. Act decisively.
- Long range spotting can block your escape routes, always have an alternate plan.

Fuels and Fire Behavior Advisory

Northern California

August 17, 2021 to August 31, 2021



Subject: Potential for extreme fire behavior due to critically low live and dead fuel moistures, very dry conditions resulting from persistent drought, minimal snowpack and spring precipitation, and elevated fire danger rating values across much of northern California.

Discussion: Fires burning in northern California are exhibiting extreme fire growth based on critical fuel conditions. Fire spread is fuel driven and does not depend on wind to spread. Surface fuels are very receptive to embers. Long range spotting, area ignition, and group torching is occurring on large fires frequently.

Difference from normal conditions: Northern California is in a drought; currently with 90% at Extreme to Exceptional levels. The drought is expected to persist or intensify thorough out the fire season. Deficient rainfall and snowpack with early melt off has resulted in fuels that are below average in dryness, with record setting conditions for most areas.

Concerns to Firefighters and the Public:

- Energy Release Component (ERC) at numerous weather stations set record maximums already this year and are running at or above the 97th percentile in most cases. Expect increased fire intensity and spread rates in these areas. Early season extreme fire behavior has been observed in both light and heavy fuels. **Anticipate increased spread rates, spotting, and active nighttime burning.**
- The combination of persistent drought and record-low rainfall and snowpack amounts has led to very low live and dead fuel moistures. Low 1000-hour fuel moistures have been evidenced by complete consumption of dead fuels on recent fires. Live fuel moistures in grasses, shrubs and trees, have already reached critical levels in many areas of Northern California due to limited green-up this spring. **Expect fires to ignite easier and spread faster. Do not expect fires to exhibit reduced fire behavior when entering areas of live fuels; anticipate increased spread rates and spotting.**
- Direct attack is often not feasible under regular diurnal wind conditions with ground resources. And aviation utilization is often insufficient in moderating rate of spread without immediate heavy ground resource response. **Anticipate higher resistance to control in all fuel types.**
- Already this year, Northern California has experienced large fire activity and multiple team deployments. California will likely experience an extended fire season. It is important to be mindful of and manage fatigue for all resources. **Everyone, every day, returns home safely.**

Mitigation Measures:

- Local and inbound fire personnel need to be aware that fire behavior across the state is exceeding normal expectations for this time of the year. **Local briefings need to be thorough and highlight specific fire environment conditions. These include but are not limited to local weather forecasts, Pocket Cards, ERC's, live and dead fuel moistures.**
- Suppression actions need to be based on good anchor points, escape routes, and safety zones. **Remember LCES. Experienced lookouts are essential under these conditions.**
- Base all actions on current and expected behavior of the fire. **Augment initial attack resources as incident activity dictates.**

Area of Concern: Northern California except for the following Predictive Service Areas: North Coast and Bay Marine, west of Highway 101 in Mid-Coast to Mendocino and Diablo-Santa Cruz, and the north eastern portion of Far Eastside.



SAFETY MESSAGE CALDOR INCIDENT



1. Incident Name: CALDOR	2. Operational Period: Date From: 8/25/21 Time From: 07:00	Date To: 8/26/21 Time To: 07:00
--------------------------	---	------------------------------------

HAZARD TREES:

Pay Close Attention to Where You Are Parking, Working or Taking a Break.
Review the Safety Communication with your crews.

HIGHER TEMPERATURES FORECASTED.

MONITOR yourself and your assigned personnel for FATIGUE and DEHYDRATION.
 Use cooling stations throughout the day.
 Avoid Complacency.
 Maintain Good Work Rest Cycles.

When Moving Apparatus Utilize backers and spotters When in Doubt Scout It Out.

RECEPTIVE FUEL BEDS – Critical Rates of Spread: Long Range Spotting
 The Wind Goes Where the Water Flows, Watch for Alignment.

ENSURE ALL PERSONNEL ARE IN PROPER PPE PRIOR TO STARTING ANY OPERATIONS, There Won't Be Time to Adjust If Conditions Change.

Adhere to COVID-19 Best Practices – Masks must be worn indoors and when social distancing can't be maintained (i.e. Morning Operational Briefing)

Don't Let Pressure Alter Your Decision-Making Process

PLAN = Primary Alternate Contingency Emergency


4. Site Safety Plan Required? Yes No

5. Prepared by: Name: J.Buchmeier SOF1 / J.Novak SOF1

ICS 208

Date/Time August 24, 2021 / 1900

**CALDOR FIRE
RISK ANALYSIS (ICS 215-A)**

DIV	HAZARDOUS ACTIONS/CONDITIONS	MITIGATIONS / WARNINGS / REMEDIES
ALL	EXTREME FIRE BEHAVIOR & NEW START(S)	Know your LCES and maintain Situational Awareness. Use experienced Look Outs. Follow downhill line construction guidelines. Monitor weather for changes in the wind, temp, and RH during the shift. Have a contingency plan with established decision points and safety zones.
ALL	COVID 19, ILLNESS, & HYGIENE	Adhere to local, state, federal and CDC health guidelines. Maintain social distancing when applicable. Wear a mask if unvaccinated. Report any illness symptoms immediately to a supervisor. Hygiene, hand washing, and disinfecting of surfaces & handles often.
ALL	FATIGUE, HEAT, & DEHYDRATION	Don't underestimate the task at hand. Adhere to work/rest cycle for all task(s). Drink water before, during and after shifts, up to 1.5 gal. per shift. Review Heat Related Emergencies (IRPG Pg. 109). Seek shade when you can. Watch for stack-effect of fatigue and exhaustion; REST & Plan operations.
ALL	COMPLACENCY	Be alert for signs of fatigue and distractions; remain engaged. Know your LCES and maintain situational awareness. Have the right radio clone. Know your adjoining forces and FREQUENCIES. Primary, Alternate, Contingency, Emergency on all assignments.
ALL	REPTILES, BEE'S & ANIMALS	Watch Out for RATTLESNAKES! Be aware of possible bee or wasp hives. Be cautious to other natural animals and hazards associated with each.
ALL	STEEP TERRAIN / ROLLING DEBRIS	Watch your footing while hiking in steep terrain. Be careful of loose rolling debris. Maintain Situational Awareness . Know Tree Hazards in the work area. Dangerous Mountain Roads – SLOW Defensive Driving.
ALL	FALLING MODULES & HAZARD TREES.	The ones that haven't fallen yet; look up, look around – identify hazard trees. Identify and isolate the area to provide for the safety of others. Drought-Stressed Trees are weakened; Flag and make proper notifications. Do not fall trees out of your certification level. Evaluate wind and lean prior to making cuts.
ALL	DRIVING HAZARDS	SLOW DOWN! Do 360's before moving vehicles. Utilize Chocks. Drive with headlights & seatbelts on; drive defensively on steep winding roads. Watch Speed through communities; public perception and safety are key. Utilize spotters and backers; when in doubt, scout it out. Assess Road Conditions; Flag hazard if you cannot mitigate, report.
ALL	MINE SHAFTS	Caution to mine shafts that may be in the fire area. Do not enter or seek shade in shafts; stay clear and identify.
ALL	AIRCRAFT OPERATIONS	Monitor air-to-ground frequencies; they are your eyes in the sky. Use air-to-ground frequency to communicate with aircraft. Use clear, concise statements when directing aircraft; CLEAR THE LINE! Only utilize aircraft to insert personnel on the line when necessary.
Incident Name: CALDOR FIRE ICS 215a		Prepared by: Jason Novak SOF1 
		OPERATIONAL PERIOD 8/25/21-8/26/21 0700-0700



SAFETY COMMUNICATION

HAZARD TREE / TREE MORTALITY AWARENESS



Standing dead trees (snags) and green trees remain a constant threat to responder safety. Due to extended drought conditions, there are millions of dead and dying trees in California, and many more that are stressed due to unhealthy forests or fire damage. The combination of epidemic levels of bark beetle infestations and years of drought conditions has created an extreme hazard throughout California. Conifer and Oak trees that have recently died are identified as “Red Trees”. Once the needles or leaves have fallen, the dead tree enters the “Gray Phase” where continued decay and decomposition may be occurring internally with few visual indicators of its extent.

Aside from over 9 million acres of standing dead trees that pose an extreme life safety hazard for firefighters and civilians, the hazard trees are everywhere we operate carrying out our mission. Educating and training our personnel on “Hazard Tree” awareness as well as the appropriate actions for identification and mitigation of safety concerns while working, training, and responding to **ALL AREAS IS CRITICAL**. Operating in a known tree mortality area brings awareness to responders, we need to ensure we are taking precautions in ALL areas.

- Personnel should identify the “Hazard Tree” or “Tree Mortality” locations in their local response areas, fire line assignments and the locations of active fuel reduction projects that they could possibly encounter.
- Recognize when responding to identified “Tree Mortality” areas and provide safety briefings to all responding resources.
- Incidents should be focused on responder safety and hazard tree considerations.
- Be prepared for extreme fire behavior and dangerous rates of spread:
 - Delay or withdraw until the fire can be engaged.
 - Provide appropriate clearance for staged or parked vehicles.
- **Recognize the potential for:**
 - Green trees falling without warning.
 - Ground fire rapidly reaching the crowns of large dead stands of trees
 - Trees and limbs falling during air operations or windy conditions
 - With advancing decay of trees watch for bark slide, falling limbs or multiple trees falling together if they are in contact with each other
- Personnel performing work on fuel reduction projects in **ALL** areas, need to **ensure applicable IIPP documents reflect the work being performed** and are updated throughout the project’s life span.



Lookout – When working around fire weakened, stressed or decaying trees

Communicate – Brief personnel when working near fire weakened or hazard tree areas

Escape Routes – May be compromised by falling trees

Safety Zones – Are identified and large enough for a “Hazard Tree” or “Tree Mortality” area

For Tree Mortality Area Responder Briefing Packets, [click here](#)



Employee Response Action Plan

COVID-19 Positive Test or COVID-19 Positive Clinical Symptoms Presentation

- COVID 19 Symptoms: Cough, SOB, Fever or afebrile, Chills, Muscle Pain, Sore throat, Loss of taste/smell
- Employee informs Company Officer and Strike Team Leader of presumed/confirmed COVID-19 symptoms.
- Employee advised to seek evaluation by Medical Unit and CAL MAT or base camp medical unit.
- Crew initiates cleaning measures. Mask, safety glasses, gloves worn. (If needed, LOGS will assist)
- Medical Unit to notified IC, Liaison, Safety and Logistics ASAP. Medical Unit will notify COVID-19 Public Health Officer and determine need for testing and locations.

Incident Action Plan

- Company Officer / Strike Team Leader notified of personnel with COVID-19 positive test or symptom.
- Medical Unit evaluates individual(s) and need for care and evaluation.
- IC, Liaison, Safety and Logistics notification made to determine course of incident evaluation and response.
- Line Chief, Agency Administrator, and Region Office updated upon notification

Facilities Response


- Medical and Safety notified
- Incident Notification
- Disinfection plan initiated.
- Resource Status Evaluated

Medical Evaluation & Contact Tracing

- Personnel interviewed by Medical Unit . List of Positive contacts made in the last 5 days acquired. All Exposed are required to wear surgical mask, self monitor for Fever/Resp symptoms for up to 14 days (exposed personnel are subject to COVID-19 testing)
- Home Unit / Department utilized and retrospective tracking of Positive COVID-19 personnel inter-actions are identified within the last 5 days.
- Home Unit / Department updated by Company Officer / Strike Team Leader.
- Public Health Department is contacted and updated by IC or Designated Representative.
- Positive COVID-19 Employees w/symptoms will need to be evaluated by Health Department conducting testing, prior to returning to assignment.
- Positive COVID-19 Employees w/o symptoms may be required to be evaluated and resource status will be reviewed prior to returning to assignment.

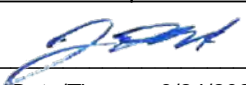
ASSIGNMENT LIST (ICS 204 WF)

CONTROLLED UNCLASSIFIED
INFORMATION//BASIC

1. Incident Name:		2. Operational Period:				3. Branch		Division	
Caldor Incident		Date From: 08/25/21		Date To: 08/26/21		I		A	
		Time From: 0700		Time To: 0700		Page 1 of 2		Alpha	
4. Operations Personnel:									
Operations Section Chief: E. Schwab / D. Pereira				Night Ops: T. Ernst					
Branch Director: D. Esades				Branch Safety: J. Foy / P. Ryan (12)					
Division/Group Supervisor: B. Eagan				Air Attack: A. Sanchez					
5. Resources Assigned:									
** Resources Below in Bold are 12 Hour **									
Resource Identifier	ALS	LWD	Leader	Personnel	Request #	Hours	Reporting Location		
STA OES 2806A			S. Hagarty	18	E-20344	0700-0700	ICP		
STA XLG 1362A			K. Millikan	20	E-20343	0700-0700	ICP		
STC MVU 9332C			K. Thompson	16	E-20085	0700-0700	ICP		
T/F XBO 6211			D. Wooters	20	E-20310	0700-0700	ICP		
T/F CALDOR 1			P. Moffett	18	E-9002	0700-0700	ICP		
T/F Pioneer			K. Earl			0700-1900	ICP		
STG TCU 9448G (CCC)			A. Ambriz	31	C-20028	0700-1900	ICP		
CRW LAGUNA IHC		8/29	T. Kraling	20	C-1	0700-1900	ICP		
CRW PVT C-30			C. Valentine	20	C-30	0700-1900	ICP		
CRW PVT C-31			Z. Curtis	20	C-31	0700-1900	ICP		
DOZ ANF 10		8/29	A. Nava	2	E-34	0700-1900	ICP		
DOZ PVT E-29			M. Armstrong	1	E-29	0700-1900	ICP		
DOZ PVT E-33			B. Caruthers	2	E-33	0700-1900	ICP		
DOZ PVT E-20261			M. Dusi	2	E-20261	0700-0700	ICP		
DOZ PVT E-20263			D. Rector	1	E-20263	0700-1900	ICP		
W/T PVT E-20007			R. Carvalho	1	E-20007	0700-1900	ICP		
W/T PVT E-20012			R. Alvarez	1	E-20012	0700-1900	ICP		
W/T PVT E-20152			K. Lawless	1	E-20152	0700-1900	ICP		
6. Work Assignments:									
Prepare for firing operations and implement burn plan.									
Construct control lines as direct as possible.									
Insert progressive hose lays.									
Improve and hold established control lines.									
7. Special Instructions:									
Buckbar Rd. off limits to Water Tenders, alternate route use Pleasant Valley Rd.									
AMB ALS 2, REMS 18 (12), AMB BLS 527 (12)									
8. Communications									
Name	Ch	Function	Rx Freq	Rx Tone	Tx Freq	Tx Tone	Notes		
CMD 105	1	COMMAND	172.4500N	114.8	166.9375N	114.8	SACRAMENTO PEAK		
CDF T26	11	TACTICAL	159.2925N	192.8	159.2925N	192.8			
A/G TAC	14	AIR TO GROUND	164.1375N		164.1375N				
CALCORD	15	MEDICAL	156.0750N	156.7	156.0750N	156.7	MEDICAL COORDINATION		
GUARD 23	16	EMERGENCY	168.6250N		168.6250N	110.9	EMERGENCY USE ONLY		
9. Prepared by: Name:									
J. Heald				RESL		24 Hr Shift:		58	
Signature: 						12 Hr Shift:		94	
				Date/Time: 8/24/2021 2200		Total:		194	
ICS 204									

ASSIGNMENT LIST (ICS 204 WF)

CONTROLLED UNCLASSIFIED
INFORMATION/BASIC

1. Incident Name:		2. Operational Period:				3. Branch		Division	
Caldor Incident		Date From: 08/25/21	Date To: 08/26/21			I	F		
		Time From: 0700	Time To: 0700			Page 1 of 2		Foxtrot	
4. Operations Personnel:									
Operations Section Chief: E. Schwab / D. Pereira					Night Ops: T. Ernst				
Branch Director: D. Esades					Branch Safety: J. Foy / P. Ryan (12)				
Division/Group Supervisor: P. Lohan					Air Attack: A. Sanchez				
5. Resources Assigned:									
** Resources Below in Bold are 12 Hour **									
Resource Identifier	ALS	LWD	Leader	Personnel	Request #	Hours	ICP		
STC BDU 9353C			B. Taylor	17	E-20000	0700-0700	ICP		
STC NEU 9231C			D. Nelson	18	E-20211	0700-0700	ICP		
T/F CALDOR 2		8/29	C. Cowl	24	E-9003	0700-1900	ICP		
ENG SNF 312		9/6	M. Seymour	5	E-365	0700-1900	ICP		
ENG BNP 74			W. Breakfield	5	E-372	0700-1900	ICP		
STG RRU 9313G			R. Kirby	35	C-20014	0700-0700	ICP		
CRW SCU PECH 2			G. Pullen	15	C-17	0700-1900	ICP		
CRW CNA 16A			M. Mocettini	22	C-16	0700-1900	ICP		
DOZ BEU 4645			J. Tresslev	2	E-47	0700-0700	ICP		
DOZ ENF 3			D. Angenderfer	4	E-200	0700-0700	ICP		
DOZ PVT E-20258			T. Wanzer	2	E-20258	0700-0700	ICP		
DOZ PVT E-20262			A. Francis	2	E-20262	0700-0700	ICP		
DOZ PVT E-20537			M. Smith	2	E-20537	0700-0700	ICP		
W/T XAM 6540			E. Moore	2	E-14	0700-0700	ICP		
W/T PVT E-20001			A. Chidley	2	E-20001	0700-0700	ICP		
W/T PVT E-20002			S. Zay	2	E-20002	0700-0700	ICP		
W/T PVT E-20019			M. Dahl	1	E-20019	0700-1900	ICP		
W/T PVT E-20153			M. Greer	1	E-20153	0700-1900	ICP		
W/T PVT E-20277			D. Castle	1	E-20277	0700-1900	ICP		
6. Work Assignments:									
Construct control lines as direct as possible.									
Improve and hold established control lines.									
Insert progressive hose lays.									
7. Special Instructions:									
Buckbar Rd. off limits to Water Tenders, alternate route use Pleasant Valley Rd.									
AMB ALS 2, REMS 18 (12), AMB BLS 527 (12)									
REAF A. Brown, J. Mabe									
8. Communications									
Name	Ch	Function	Rx Freq	Rx Tone	Tx Freq	Tx Tone	Notes		
CMD 105	1	COMMAND	172.4500N	114.8	166.9375N	114.8	SACRAMENTO PEAK		
NIFC T3	9	TACTICAL	168.6000N		168.6000N				
A/G TAC	14	AIR TO GROUND	164.1375N		164.1375N				
CALCORD	15	MEDICAL	156.0750N	156.7	156.0750N	156.7	MEDICAL COORDINATION		
GUARD 23	16	EMERGENCY	168.6250N		168.6250N	110.9	EMERGENCY USE ONLY		
9. Prepared by: Name:									
J. Heald			RESL		24 Hr Shift:		63		
Signature: 					12 Hr Shift:		50		
Date/Time: 8/24/2021 2200					Total:		162		
ICS 204									

ASSIGNMENT LIST (ICS 204 WF)

CONTROLLED UNCLASSIFIED
INFORMATION//BASIC

1. Incident Name:	2. Operational Period:	3. Branch	Division
Caldor Incident	Date From: 08/25/21 Date To: 08/26/21 Time From: 0700 Time To: 0700	X	H
4. Operations Personnel:		Page 1 of 2	Hotel

Operations Section Chief: E. Schwab / D. Pereira	Night Ops: T. Ernst
Branch Director: M. Wallen / S. Long (T)	Branch Safety: D. White / R. Menise
Division/Group Supervisor: A. Estabrook / J. Novak (T)	Air Attack: A. Sanchez

5. Resources Assigned:	** Resources Below in Bold are 12 Hour **							
Resource Identifier	ALS	LWD	Leader	Personnel	Request #	Hours	Reporting Location	
STC OES 4800C	X		M. Piacentini	22	E-20341	0700-0700	DP-22	
T/F XCA 4054			S. Kovacs	16	E-92	0700-0700	DP-22	
T/F XMR 2140			M. Bouchard	19	E-20340	0700-0700	DP-22	
T/F XTO 4250			G. Miller	17	E-20221	0700-0700	DP-22	
STG RRU 9314G (CDCR)			C. Wright	27	C-12	0700-0700	DP-22	
STG AEU 9279G (CCC)			D. Garnin	30	C-20009	0700-0700	DP-22	
CRW MNF MENDOCINO IHC			E. Ceccon	20	C-46	1900-0700	DP-22 (NIGHT)	
CRW ENF CREW 23			B. Fletcher	10	O-164	0700-1900	DP-22	
CRW ENF Crew 26			K. Breitwieser		O-4	0700-1900	DP-22	
DOZ PVT E-20033			T. Vicini	2	E-20033	0700-0700	DP-22	
DOZ PVT E-20183			M. Nottnagel	2	E-20183	0700-0700	DP-22	
DOZ PVT E-20255			N. Morton	3	E-20255	0700-0700	DP-22	
DOZ PVT E-20256			K. Dye	3	E-20256	0700-0700	DP-22	
DOZ PVT E-20259			G. Bartglet	2	E-20259	0700-0700	DP-22	
W/T PVT E-20014			N. Green	1	E-20014	0700-1900	DP-22	
W/T PVT E-20020			T. Astasopoulos	1	E-20020	0700-1900	DP-22	
W/T PVT E-20171			P. Mailloux	1	E-20171	0700-1900	DP-22	
W/T PVT E-20273			J. Vaine	1	E-20273	0700-1900	DP-22	

6. Work Assignments:
 Construct control lines as direct as possible.
 Insert progressive hose lays.
 Improve and hold established control lines.
 Implement structure defense plan, with an emphasis on perimeter control.

7. Special Instructions:
 Buckbar Rd. off limits to Water Tenders, alternate route use Pleasant Valley Rd.


AMB ALS 801
REAF A. Brown, J. Mabe

8. Communications							
Name	Ch	Function	Rx Freq	Rx Tone	Tx Freq	Tx Tone	Notes
CMD 105	1	COMMAND	172.4500N	114.8	166.9375N	114.8	SACRAMENTO PEAK
CDF T28	8	TACTICAL	151.1825N	192.8	151.1825N	192.8	
A/G TAC	14	AIR TO GROUND	164.1375N		164.1375N		
CALCORD	15	MEDICAL	156.0750N	156.7	156.0750N	156.7	MEDICAL COORDINATION
GUARD 23	16	EMERGENCY	168.6250N		168.6250N	110.9	EMERGENCY USE ONLY

9. Prepared by: Name:	J. Heald	RESL	24 Hr Shift: 114
	Signature:		12 Hr Shift: 3
ICS 204	Date/Time: 8/24/2021 2200		Total: 177

ASSIGNMENT LIST (ICS 204 WF)

CONTROLLED UNCLASSIFIED
INFORMATION//BASIC

1. Incident Name:		2. Operational Period:				3. Branch		Division	
Caldor Incident		Date From: 08/25/21	Date To: 08/26/21			X		I	
		Time From: 0700	Time To: 0700			Page 1 of 1		India	
4. Operations Personnel:									
Operations Section Chief: E. Schwab / D. Pereira					Night Ops: T. Ernst				
Branch Director: M. Wallen / S. Long (T)					Branch Safety: D. White / R. Menise				
Division/Group Supervisor: L. Loeffler (12)					Air Attack: A. Sanchez				
5. Resources Assigned:									
** Resources Below in Bold are 12 Hour **									
Resource Identifier	ALS	LWD	Leader	Personnel	Request #	Hours	Reporting Location		
T/F CALDOR 3		8/30	P. Preston	24	E-9004	0700-1900	DP-21		
ENG ANF 331		8/30	L. Winkler	4	E-3	0700-1900	DP-21		
ENG CNO 233		8/26	C. Pond	4	E-8	0700-1900	DP-21		
ENG ENF 368		8/28	B. Quinoz	5	E-43	0700-1900	DP-21		
ENG SRF 342		9/1	J. Luis	5	E-107	0700-1900	DP-21		
ENG BDF 1R		9/1	A. Tinker	5	E-110	0700-1900	DP-21		
ENG BDF 5R		9/1	T. Norwood	5	E-112	0700-1900	DP-21		
STG NEU 9235G			J. Russell	36	C-20013	0700-0700	DP-21		
CRW EL CARISO IHC		8/30	N. Mendoza	20	C-8	0700-1900	DP-21		
CRW CNF CHEROKEE IHC			B. Corbit	22	C-28	1900-0700	DP-21 (NIGHT)		
DOZ PVT E-20533			S. Hill	2	E-20533	0700-0700	DP-21		
DOZ PVT E-20637			B. Nettles	3	E-20637	0700-0700	DP-21		
W/T PVT E-20274		9/4	D. Escoffier	1	E-20274	0700-1900	DP-21		
W/T PVT E-20284		9/4	M. Vazzana	1	E-20284	0700-1900	DP-21		
W/T PVT E-20564		9/6	A. D'angelo	2	E-20564	0700-0700	DP-21		
6. Work Assignments:									
Prepare structures for defensive actions.									
Construct control lines as direct as possible.									
Improve and hold established control lines.									
Insert progressive hose lays.									
7. Special Instructions:									
Buckbar Rd. off limits to Water Tenders, alternate route use Pleasant Valley Rd.									
AMB ALS 801									
REAF A. Brown, J. Mabe									
8. Communications									
Name	Ch	Function	Rx Freq	Rx Tone	Tx Freq	Tx Tone	Notes		
CMD 105	1	COMMAND	172.4500N	114.8	166.9375N	114.8	SACRAMENTO PEAK		
CDF T29	9	TACTICAL	151.3475N	192.8	151.3475N	192.8			
A/G TAC	14	AIR TO GROUND	164.1375N		164.1375N				
CALCORD	15	MEDICAL	156.0750N	156.7	156.0750N	156.7	MEDICAL COORDINATION		
GUARD 23	16	EMERGENCY	168.6250N		168.6250N	110.9	EMERGENCY USE ONLY		
9. Prepared by: Name:									
J. Heald					RESL		24 Hr Shift: 43		
Signature: 							12 Hr Shift: 37		
ICS 204					Date/Time: 8/24/2021 2200		Total: 139		

ASSIGNMENT LIST (ICS 204 WF)

CONTROLLED UNCLASSIFIED
INFORMATION//BASIC

1. Incident Name: Caldor Incident	2. Operational Period: Date From: 08/25/21 Date To: 08/26/21 Time From: 0700 Time To: 0700	3. Branch Division XV J Page 1 of 3 Juliet
--	---	--

4. Operations Personnel:	
Operations Section Chief: E. Schwab / D. Pereira	Night Ops: T. Ernst
Branch Director: B. Loomis (12)	Branch Safety: C. Rutherglen / R. Barton (12)
Division/Group Supervisor: B. Stewart (12) L. Brown (T) (12)	Air Attack: A. Sanchez

5. Resources Assigned:	** Resources Below in Bold are 12 Hour **						
Resource Identifier	ALS	LWD	Leader	Personnel	Request #	Hours	Reporting Location
STC TUU 9410C			W. Goodman	16	E-20197	0700-0700	DP 21
ENG CNF 329		9/6	H. Mott	5	E-370	0700-1900	DP 21
ENG CLG 171			K. Krider	3	E-20469	0700-0700	DP 21
ENG MTSWS T6			D. Geissal	2	E-269	0700-1900	DP 21
ENG CTF 641		9/5	E. Horn	4	E-270	0700-1900	DP 21
ENG COPALX BRUSH 2			K. Cashman	3	E-271	0700-1900	DP 21
ENG SHF 642		9/6	H. Goulet	5	E-274	0700-1900	DP 21
ENG RFC 5627			N. Spence	4	E-312	1900-0700	DP 21 (NIGHT)
ENG NWS 301			M. Winburn	6	E-308	1900-0700	DP 21 (NIGHT)
ENG PVT E-306			D. Norton	2	E-306	1900-0700	DP 21 (NIGHT)
CRW GID ARAVAIPA IHC			W. Irish	19	C-50	0700-1900	DP 21
CRW NLTX NORTH TAHOE			J. Higgins	21	C-43	0700-1900	DP 21
CRW NLTX RIFLE PEAK			J. Ellis	21	C-43	0700-1900	DP 21
CRW PVT C-34			A. Perez	20	C-34	1900-0700	DP 21 (NIGHT)
CRW PVT C-56			M. Fleek	20	C-56	1900-0700	DP 21 (NIGHT)
STL TUU 9416L			S. Braziel	9	E-20596	0700-0700	DP 21 (NIGHT)
STL SBC 9322L			J. Muniz	7	E-20597	0700-0700	DP 21 (NIGHT)
STL LNU 9144L			D. Bohan	9	E-20635	0700-0700	DP 21 (NIGHT)

6. Work Assignments:
 Prepare structures for defensive actions.
 Construct control lines as direct as possible.
 Plan secondary control lines, begin if possible.

7. Special Instructions:
 Buckbar Rd. off limits to Water Tenders, alternate route use Pleasant Valley Rd.

AMB ALS 5
REAF C. Hutcheson, J. Cooper, J. Scrin and V. Marti

8. Communications							
Name	Ch	Function	Rx Freq	Rx Tone	Tx Freq	Tx Tone	Notes
CMD 105	1	COMMAND	172.4500N	114.8	166.9375N	114.8	SACRAMENTO PEAK
NIFC T3	9	TACTICAL	168.6000N		168.6000N		
A/G TAC	14	AIR TO GROUND	164.1375N		164.1375N		
CALCORD	15	MEDICAL	156.0750N	156.7	156.0750N	156.7	MEDICAL COORDINATION
GUARD 23	16	EMERGENCY	168.6250N		168.6250N	110.9	EMERGENCY USE ONLY

9. Prepared by: Name:	J. Heald	RESL	24 Hr Shift: 28
	Signature:		12 Hr Shift: 80
ICS 204	Date/Time: 8/24/2021 2200		Total: 176

ASSIGNMENT LIST (ICS 204 WF)

CONTROLLED UNCLASSIFIED
INFORMATION//BASIC

1. Incident Name:	2. Operational Period:	3. Branch	Division
Caldor Incident	Date From: 08/25/21 Date To: 08/26/21 Time From: 0700 Time To: 0700	XV	J
4. Operations Personnel:		Page 2 of 3	Juliet

Operations Section Chief: E. Schwab / D. Pereira	Night Ops: T. Ernst
Branch Director: B. Loomis (12)	Branch Safety: C. Rutherglen / R. Barton (12)
Division/Group Supervisor: B. Stewart (12) L. Brown (T) (12)	Air Attack: A. Sanchez

5. Resources Assigned:	** Resources Below in Bold are 12 Hour **							
Resource Identifier	ALS	LWD	Leader	Personnel	Request #	Hours	Reporting Location	
DOZ BTU 2140			J. Ryan	2	E-49	0700-0700	DP 21	
DOZ ENF 24030		8/29	L. Benson	2	E-20022	0700-0700	DP 21	
DOZ PVT E-20023			D. Spalwn	2	E-20023	0700-0700	DP 21	
DOZ PVT E-20187			M. Hauber	2	E-20187	0700-0700	DP 21	
DOZ PVT E-20265			T. Norton	2	E-20265	0700-0700	DP 21	
DOZ PVT E-20266			T. McAuliffe	1	E-20266	0700-1900	DP 21	
DOZ PVT E-20636			T. Stevenson	2	E-20636	0700-0700	DP 21	
W/T PVT E-20017			B. Rose	1	E-20017	0700-1900	DP 21	
W/T PVT E-20173			N. Baldiviez	1	E-20173	0700-0700	DP 21	
W/T PVT E-20177			R. Hurl	2	E-20177	0700-0700	DP 21	
W/T PVT E-20280			J. Corley	1	E-20280	0700-1900	DP 21	
W/T PVT E-20009			R. Keene	1	E-20009	0700-1900	DP 21	
MAS PVT E-20035			P. Leuzinger	2	E-20035	0700-1900	DP 21	
MAS PVT E-20036			B. Gardner	1	E-20036	0700-1900	DP 21	
MAST PVT E-20389			S. Hill	2	E-20389	0700-1900	DP 21	
HEQB WYMAN			K. Wyman	1	O-221	0700-1900	DP 21	
HEQB-T HARNOS			T. Harnos	1	O-217	0700-1900	DP 21	
HEQB JANES		9/6	B. Janes	1	O-222	0700-1900	DP 21	

6. Work Assignments:
 Prepare structures for defensive actions.
 Construct control lines as direct as possible.
 Plan secondary control lines, begin if possible.

7. Special Instructions:
 Buckbar Rd. off limits to Water Tenders, alternate route use Pleasant Valley Rd.

AMB ALS 5
REAF C. Hutcheson, J. Cooper, J. Scrin and V. Marti

8. Communications							
Name	Ch	Function	Rx Freq	Rx Tone	Tx Freq	Tx Tone	Notes
CMD 105	1	COMMAND	172.4500N	114.8	166.9375N	114.8	SACRAMENTO PEAK
NIFC T3	9	TACTICAL	168.6000N		168.6000N		
A/G TAC	14	AIR TO GROUND	164.1375N		164.1375N		
CALCORD	15	MEDICAL	156.0750N	156.7	156.0750N	156.7	MEDICAL COORDINATION
GUARD 23	16	EMERGENCY	168.6250N		168.6250N	110.9	EMERGENCY USE ONLY

9. Prepared by: Name:	J. Heald	RESL	24 Hr Shift: 9
	Signature:		12 Hr Shift: 11
ICS 204	Date/Time: 8/24/2021 2200		Total: 27

ASSIGNMENT LIST (ICS 204 WF)

CONTROLLED UNCLASSIFIED
INFORMATION//BASIC

1. Incident Name:	2. Operational Period:	3. Branch	Division
Caldor Incident	Date From: 08/25/21 Date To: 08/26/21 Time From: 0700 Time To: 0700	XV	L
4. Operations Personnel:		Page 1 of 2	Lima

Operations Section Chief: E. Schwab / D. Pereira	Night Ops: T. Ernst
Branch Director: B. Loomis (12)	Branch Safety: C. Rutherglen / R. Barton (12)
Division/Group Supervisor: J. Chester (12)	Air Attack: A. Sanchez

5. Resources Assigned:	** Resources Below in Bold are 12 Hour **							
Resource Identifier	ALS	LWD	Leader	Personnel	Request #	Hours	Reporting Location	
ENG MNF 345		8/29	H. Moreno	5	E-5	0700-1900	88 X MET	
ENG MNF 332		8/28	C. Sampley	3	E-6	0700-1900	88 X MET	
ENG SQF 332		8/28	R. Betancourt	5	E-22	0700-1900	88 X MET	
ENG CNF 322		8/28	C. Hamilton	5	E-27	0700-1900	88 X MET	
ENG INF 331		8/28	B. Hubbard	5	E-37	0700-1900	88 X MET	
ENG BDF 330		9/1	C. Coward	5	E-111	0700-1900	88 X MET	
ENG TNF 72		9/3	M. Bradford	5	E-224	0700-1900	88 X MET	
ENG SHF 363		9/5	K. Smyth	5	E-357	0700-1900	88 X MET	
ENG KNF 16		9/5	J. Morgan	6	E-360	0700-1900	88 X MET	
ENG NWS 5121		8/31	A. Jares	6	E-20159	0700-1900	88 X MET	
ENG NV MSVX - BRUSH 1		9/1	L. Parrotti	4	E-20160	0700-1900	88 X MET	
ENG MINX B160		9/1	C. Mann	3	E-20166	0700-1900	88 X MET	
ENG ID MCN 41		8/28	R. Ricks	3	E-104	0700-1900	88 X MET	
ENG ZIP 403		9/2	B. Bird	7	E-180	0700-1900	88 X MET	
ENG PAA 814		8/24	S. Bishop	3	E-38	0700-1900	88 X MET	
ENG PVT E-20467		9/5	M. Hagy	3	E-20467	0700-1900	88 X MET	
STG LMU 9224G (FF)			R. Veverka	28	C-13	0700-1900	88 X MET	
CRW SIERRA FRONT		9/6	A. Sharp	20	C-53	0700-1900	88 X MET	

6. Work Assignments:
 Prepare structures for defensive actions.
 Construct control lines as direct as possible.
 Improve and hold established control lines.

7. Special Instructions:
 Buckbar Rd. off limits to Water Tenders, alternate route use Pleasant Valley Rd.
 Prepare for firing Silverfork to DIV J.
AMB ALS 5
REAF C. Hutcheson, J. Cooper, J. Scrin and V. Marti

8. Communications							
Name	Ch	Function	Rx Freq	Rx Tone	Tx Freq	Tx Tone	Notes
CMD 105	1	COMMAND	172.4500N	114.8	166.9375N	114.8	SACRAMENTO PEAK
NIFC T1	7	TACTICAL	168.0500N		168.0500N		
A/G TAC	14	AIR TO GROUND	164.1375N		164.1375N		
CALCORD	15	MEDICAL	156.0750N	156.7	156.0750N	156.7	MEDICAL COORDINATION
GUARD 23	16	EMERGENCY	168.6250N		168.6250N	110.9	EMERGENCY USE ONLY

9. Prepared by: Name:	J. Heald	RESL	24 Hr Shift: 0
	Signature:		12 Hr Shift: 98
ICS 204	Date/Time: 8/24/2021 2200		Total: 121

ASSIGNMENT LIST (ICS 204 WF)

CONTROLLED UNCLASSIFIED
INFORMATION//BASIC

1. Incident Name:	2. Operational Period:	3. Branch	Division
Caldor Incident	Date From: 08/25/21 Date To: 08/26/21 Time From: 0700 Time To: 0700	XV	L
4. Operations Personnel:		Page 2 of 2	Lima

Operations Section Chief: E. Schwab / D. Pereira	Night Ops: T. Ernst
Branch Director: B. Loomis (12)	Branch Safety: C. Rutherglen / R. Barton (12)
Division/Group Supervisor: J. Chester (12)	Air Attack: A. Sanchez

5. Resources Assigned:		** Resources Below in Bold are 12 Hour **					
Resource Identifier	ALS	LWD	Leader	Personnel	Request #	Hours	Reporting Location
CRW Blue Mountain 5		8/29		20	C-15	0700-1900	88 X MET
CRW PVT C-58		9/5	L. Tores	20	C-58	0700-1900	88 X MET
DOZ LNU 1448			B. Madole	2	E-20634	0700-0700	88 X MET
DOZ PVT E-20531			C. Enriques	2	E-20531	0700-0700	88 X MET
DOZ PVT E-20532			G. Pascolla	2	E-20532	0700-0700	88 X MET
DOZ PVT E-20534			A. Bushey	2	E-20534	0700-0700	88 X MET
DOZ PVT E-20538			P. Hatlestad	2	E-20538	0700-0700	88 X MET
W/T BDF 251		8/31	F. Delgado	2	E-67	0700-1900	88 X MET
W/T MDF 257		9/1	H. Venuto	1	E-113	0700-1900	88 X MET
CHIP PVT E-20611			M. Nieves	2	E-20611	0700-1900	88 X MET
FALM PVT O-20141			J. Marshall	2	O-20141	0700-1900	88 X MET
FALM PVT O-20142				2	O-20142	0700-1900	88 X MET

6. Work Assignments:
 Prepare structures for defensive actions.
 Construct control lines as direct as possible.
 Improve and hold established control lines.

7. Special Instructions:
 Buckbar Rd. off limits to Water Tenders, alternate route use Pleasant Valley Rd.
 Prepare for firing Silverfork to DIV J.
AMB ALS 5
REAF C. Hutcheson, J. Cooper, J. Scrin and V. Marti

8. Communications							
Name	Ch	Function	Rx Freq	Rx Tone	Tx Freq	Tx Tone	Notes
CMD 105	1	COMMAND	172.4500N	114.8	166.9375N	114.8	SACRAMENTO PEAK
NIFC T1	7	TACTICAL	168.0500N		168.0500N		
A/G TAC	14	AIR TO GROUND	164.1375N		164.1375N		
CALCORD	15	MEDICAL	156.0750N	156.7	156.0750N	156.7	MEDICAL COORDINATION
GUARD 23	16	EMERGENCY	168.6250N		168.6250N	110.9	EMERGENCY USE ONLY

9. Prepared by: Name:	J. Heald	RESL	24 Hr Shift: 10
	Signature:		12 Hr Shift: 47
ICS 204	Date/Time: 8/24/2021 2200		Total: 59

ASSIGNMENT LIST (ICS 204 WF)

CONTROLLED UNCLASSIFIED
INFORMATION//BASIC

1. Incident Name:	2. Operational Period:	3. Branch	Division
Caldor Incident	Date From: 08/25/21 Date To: 08/26/21 Time From: 0700 Time To: 0700	XX	N
4. Operations Personnel:		Page 1 of 1	November

Operations Section Chief: E. Schwab / D. Pereira	Night Ops: T. Ernst
Branch Director:	Branch Safety: B. Hubby / S. Pfeifer
Division/Group Supervisor: W. Almand (12)	Air Attack: A. Sanchez

5. Resources Assigned:		** Resources Below in Bold are 12 Hour **					
Resource Identifier	ALS	LWD	Leader	Personnel	Request #	Hours	Reporting Location
ENG LKR 8531			K. Bonham	5	E-282	0700-1900	ICP
ENG HTF 451		9/2	J. Hart	5	E-181	0700-1900	ICP
ENG BOD 1411		9/2	R. Hansen	3	E-203	0700-1900	ICP
ENG TIA 696		8/29	D. Stordy	4	E-35	0700-1900	ICP
ENG BNP 675			A. Oggenkamp	3	E-281	0700-1900	ICP
ENG OKS 96		9/3	D. Morris	2	E-20091	0700-1900	ICP
CRW PVT C-54		9/5	A. Hergert	20	C-54	0700-1900	ICP
CRW PVT C-55		9/5	J. Foward	20	C-55	0700-1900	ICP
DOZ PVT E-20536			J. Cameron	2	E-20536	0700-1900	ICP
DOZ PVT E-20539			C. Klauer	3	E-20539	0700-0700	ICP
W/T PVT E-20286			J. Baugh	1	E-20286	0700-1900	ICP
W/T PVT E-20287			T. Dilks	1	E-20287	0700-1900	ICP
W/T PVT E-20288			R. Barker	1	E-20288	0700-1900	ICP
FELB PVT E-20488			G. Gladen	1	E-20488	0700-1900	ICP

6. Work Assignments:
 Implement structure defense plan, with an emphasis on perimeter control.
 Construct control lines as direct as possible.
 Improve and hold established control lines.
 Insert progressive hose lays.

7. Special Instructions:
 Buckbar Rd. off limits to Water Tenders, alternate route use Pleasant Valley Rd.

EMTF Rebolledo (12), EMPF McCarthy (12)

8. Communications							
Name	Ch	Function	Rx Freq	Rx Tone	Tx Freq	Tx Tone	Notes
CMD 105	1	COMMAND	172.4500N	114.8	166.9375N	114.8	SACRAMENTO PEAK
NIFC T1	7	TACTICAL	168.0500N		168.0500N		
A/G TAC	14	AIR TO GROUND	164.1375N		164.1375N		
CALCORD	15	MEDICAL	156.0750N	156.7	156.0750N	156.7	MEDICAL COORDINATION
GUARD 23	16	EMERGENCY	168.6250N		168.6250N	110.9	EMERGENCY USE ONLY

9. Prepared by: Name:	J. Heald	RESL	24 Hr Shift: 3
	Signature:		12 Hr Shift: 64
ICS 204	Date/Time: 8/24/2021 2200		Total: 71

ASSIGNMENT LIST (ICS 204 WF)

CONTROLLED UNCLASSIFIED
INFORMATION//BASIC

1. Incident Name:	2. Operational Period:	3. Branch	Division
Caldor Incident	Date From: 08/25/21 Date To: 08/26/21 Time From: 0700 Time To: 0700	XXX	T
4. Operations Personnel:		Page 1 of 1	Tango

Operations Section Chief: E. Schwab / D. Pereira	Night Ops: T. Ernst
Branch Director: N. Hale	Branch Safety: B. Diregolo
Division/Group Supervisor: P. Preston (12)	Air Attack: A. Sanchez

5. Resources Assigned:		** Resources Below in Bold are 12 Hour **					
Resource Identifier	ALS	LWD	Leader	Personnel	Request #	Hours	Reporting Location
STC XSU 3225			R. Epperson	18	E-20595	0700-0700	DP 19
ENG OUF 692			J. Kerr	6	E-275	1900-0700	DP 19 (NIGHT)
ENG LFC 7679			J. Stork	3	E-278	1900-0700	DP 19 (NIGHT)
ENG DEF 364			I. Salsky	5	E-336	1900-0700	DP 19 (NIGHT)
ENG DEF 636			A. Saphier	5	E-337	1900-0700	DP 19 (NIGHT)
ENG NSS B5361		9/2	J. Gonzalez	4	E-20168	0700-1900	DP 19
ENG LCD 3605		9/5	M. Munoz	5	E-20362	0700-1900	DP 19
ENG SLR 6257		9/3	W. Hall	4	E-20365	0700-1900	DP 19
ENG PVT E-20466		9/5	L. Brisce	3	E-20466	0700-1900	DP 19
CRW IDSTF Sawtooth IHC			K. West	21	C-51	0700-1900	DP 19
W/T PVT E-20006			M. Humphrey	1	E-20006	0700-1900	DP 19
W/T PVT E-20564		9/6	A. D'angelo	2	E-20564	0700-0700	DP 19
TFLD COX			S. Cox	1	O-228	1900-0700	DP 19 (NIGHT)

6. Work Assignments:
 Construct control lines as direct as possible.
 Prepare indirect control line for possible firing operation.
 Improve and hold established control lines.
 Prepare structures for defensive actions.

7. Special Instructions:
 Buckbar Rd. off limits to Water Tenders, alternate route use Pleasant Valley Rd.

AMB 502 ALS, EMTF Kirk (12), EMPF Schmier (12)
REAF P. Foulk

8. Communications							
Name	Ch	Function	Rx Freq	Rx Tone	Tx Freq	Tx Tone	Notes
CMD 105	1	COMMAND	172.4500N	114.8	166.9375N	114.8	SACRAMENTO PEAK
CDF T30	10	TACTICAL	151.3925N	192.8	151.3925N	192.8	
A/G TAC	14	AIR TO GROUND	164.1375N		164.1375N		
CALCORD	15	MEDICAL	156.0750N	156.7	156.0750N	156.7	MEDICAL COORDINATION
GUARD 23	16	EMERGENCY	168.6250N		168.6250N	110.9	EMERGENCY USE ONLY

9. Prepared by: Name:	J. Heald	RESL	24 Hr Shift: 20
	Signature:		12 Hr Shift: 37
ICS 204	Date/Time: 8/24/2021 2200		Total: 78

ASSIGNMENT LIST (ICS 204 WF)

CONTROLLED UNCLASSIFIED
INFORMATION//BASIC

1. Incident Name: Caldor Incident	2. Operational Period: Date From: 08/25/21 Date To: 08/26/21 Time From: 0700 Time To: 0700	3. Branch XXX	Division U / W
4. Operations Personnel:		Page 1 of 2	Uniform

Operations Section Chief: E. Schwab / D. Pereira	Night Ops: T. Ernst
Branch Director: N. Hale	Branch Safety: B. Diregolo
Division/Group Supervisor: A. Sigona (12) / F. Burrows (T) (12)	Air Attack: A. Sanchez

5. Resources Assigned:	** Resources Below in Bold are 12 Hour **							
Resource Identifier	ALS	LWD	Leader	Personnel	Request #	Hours	Reporting Location	
ENG SRF 312		9/1	E. Johnson	5	E-106	0700-1900	DP-20	
ENG BDF 311		9/1	A. Rodriguez	5	E-108	0700-1900	DP-20	
ENG BOD 1301		9/2	N. Walker	3	E-202	0700-1900	DP-20	
ENG BOD 412		9/2	W. Burks	5	E-204	0700-1900	DP-20	
ENG MNF 353			C. Coleman	5	E-285	0700-1900	DP-20	
ENG KNF 355		9/6	K. Case	5	E-359	0700-1900	DP-20	
ENG SNF 341		9/6	J. Lindholm	5	E-363	0700-1900	DP-20	
ENG STF 332		9/5	B. Osana	4	E-368	0700-1900	DP-20	
ENG PVT E-277			I. Hofstetter	3	E-277	0700-1900	DP-20	
ENG PVT E-323			Z. Anthis	3	E-323	0700-1900	DP-20	
ENG PVT E-20468			B. Kaltenbach	3	E-20468	0700-1900	DP-20	
CRW BDF Del Rosa IHC		9/1	D. Borero	16	C-6	0700-1900	DP-20	
CRW TCU 4449			T. Swanson	7	C-20034	0700-1900	DP-20	
CRW PVT C-32			K. Parker	20	C-32	0700-1900	DP-20	
CRW PVT C-57		9/5	C. Fox	20	C-57	0700-1900	DP-20	
DOZ AEU 2741			J. Cook	2	E-13	0700-0700	DP-20	
DOZ PVT E-32			G. Mobley	2	E-32	0700-1900	DP-20	
DOZ PVT E-101			P. Bower	2	E-101	0700-0700	DP-20	

6. Work Assignments:
 Construct control lines as direct as possible.
 Prepare indirect control line for possible firing operation.
 Improve and hold established control lines.
 Prepare structures for defensive actions.

7. Special Instructions:
 Buckbar Rd. off limits to Water Tenders, alternate route use Pleasant Valley Rd.

AMB 502 ALS, EMTF Kirk (12), EMPF Schmier (12)
REAF P. Foulk

8. Communications							
Name	Ch	Function	Rx Freq	Rx Tone	Tx Freq	Tx Tone	Notes
CMD 105	1	COMMAND	172.4500N	114.8	166.9375N	114.8	SACRAMENTO PEAK
CDF T27	7	TACTICAL	159.3075N	192.8	159.3075N	192.8	
A/G TAC	14	AIR TO GROUND	164.1375N		164.1375N		
CALCORD	15	MEDICAL	156.0750N	156.7	156.0750N	156.7	MEDICAL COORDINATION
GUARD 23	16	EMERGENCY	168.6250N		168.6250N	110.9	EMERGENCY USE ONLY

9. Prepared by: Name:	J. Heald	RESL	24 Hr Shift: 2
	Signature:		12 Hr Shift: 104
ICS 204	Date/Time: 8/24/2021 2200		Total: 115

MEDICAL PLAN (ICS 206)

1. Incident Name: Caldor	2. Operational Period: Date From: 8/25/21 Date To: 8/26/21 Time From: 700 Time To: 700
---------------------------------	--

3. Medical Aid Stations:			
Name	Location	Contact Number/Freq	Physician
CAL MAT	ICP		Yes
MERT	ICP		Yes

4. Transportation (indicate air or ground):			
Ambulance Service	Location	Contact Number	Level of Service
Guard 840 24 Hr (AIR)	Reno-Tahoe INTL Airport (KRNO)	Caldor Comm	ALS
Private Ambulances (GROUND)	All Branches	Caldor Comm	ALS
REMS 18	All Branches	Caldor Comm	ALS

5. Hospitals:							
Hospital Name	Address,	Contact Number(s)/ Frequency	Travel Time		Trauma Center	Burn Center	Helipad
	Lat & Long		Air	Ground			
Marshal Medical Center	1100 Marshal Way, Placerville	530-622-1441	5 Min	10 Min	Level 3	<input type="checkbox"/>	<input type="checkbox"/>
Sutter Amador Hospital	200 Mission Blvd, Jackson Lat 38° 21.05'N Long 120°45.85'W	209- 223-7500	30 Min	1.5 Hrs	Level 4	<input type="checkbox"/>	<input checked="" type="checkbox"/>
Sutter Roseville	1 Medical Plaza Dr. Roseville Lat 38° 45.97'N Long 121° 14.87' W	916-781-1200	45 Min	3 Hrs	Level 2	<input type="checkbox"/>	<input checked="" type="checkbox"/>
Barton Memorial	2170 South Ave. So Lake Tahoe Lat 38° 54.67'N Long 119° 59.80' W	916-734-3636	40 Min	1.5 Hrs	Level 3	<input type="checkbox"/>	<input checked="" type="checkbox"/>
UC Davis Medical Center	2315 Stockton Blvd. Sacramento Lat 38° 33.28'N Long 121°27.35'W	916-734-3636	55 Min	1.5 Hrs	Level 1	<input checked="" type="checkbox"/>	<input checked="" type="checkbox"/>

6. Special Medical Emergency Procedures	
<p>Line Emergency Crew Supervisor will contact Division Supervisor with patient complaint/condition and location.</p> <p>- Division Group Supervisor Contacts:</p> <ol style="list-style-type: none"> 1. Closest EMS resource 2. Caldor Communications <p>- Communications Unit Contacts:</p> <ol style="list-style-type: none"> 1. Ground or Air ambulance as requested. 2. Operations 3. Safety <p>- Division Supervisor or designee will serve as point of contact and run medical emergency on assigned channel.</p> <ol style="list-style-type: none"> 1. A pre-assigned tactical frequency (i.e. CALCORD) should be used for IWI and only for duration of the emergency. <p>- Communications Unit will clear the Command channel for emergency traffic as needed for duration of the need.</p> <p>- Medical Unit contacts</p> <ol style="list-style-type: none"> 1. Communications 2. Operations 3. Crew Supervisor 	<p>Injury Reporting Procedures</p> <p>Nature of Injury: _____</p> <p>Location of Patient: _____</p> <p>Point of Contact: _____</p> <p>Transportation Requested by: Air ___ Ground ___</p> <p>Point of Pick-Up: _____</p> <p style="padding-left: 40px;">Lat: _____ Long: _____</p> <p>Patient Unit ID: _____</p> <p>Is an EMT with Patient: Yes ___ No ___</p> <p>Age: _____ Sex: Male ___ Female ___</p> <p>ALL EMERGENCIES—Secure the area and identify witnesses for later investigation. Keep an accurate log of events.</p> <p>**IN CAMP EMERGENCY**</p> <p>Contact Caldor Communications</p>


Check box if aviation assets are utilized for rescue. If assets are used, coordinate with Air Operations.

7. Prepared by: M. Hnat **Signature:**


8. Approved by: J. Novak **Signature:**

ICS 206 NIMS IAP **Date/Time:** 8/24/2021 1900

ICS 205 - INCIDENT RADIO COMMUNICATIONS PLAN

1. Incident Name: Caldor Incident BRANCHES 1 / 15 / 20:CALDOR Z1		2. Date/Time Prepared Date: 08/24/2021 Time: 1600		3. Operational Period: Date From: 08/25/21 Time From: 0700		Date To: 08/26/21 Time To: 0700		
4. Communications								
Ch#	Function	Name	Assigned To	Rx Freq	Rx Tone	Tx Freq	Tx Tone	Notes
1	COMMAND	CMD 105	ALL BRANCHES	172.4500N	114.8	166.9375N	114.8	SACRAMENTO PEAK
2	COMMAND	CMD 109	ALL BRANCHES	170.3875N	114.8	162.1750N	114.8	BIG HILL
3	COMMAND	CMD 104	ALL BRANCHES	170.7625N	114.8	165.6250N	114.8	NORTH OF HWY 50 BETWEEN DP 21 AND DP 24
4	COMMAND	CMD 1	ALL BRANCHES	170.9750N	114.8	168.7000N	114.8	LEEK SPRINGS
5	COMMAND	ENF T2		171.5250N	156.7	162.7500N	123.0	CONTINGENCY USE ONLY-LEEK SPRINGS
6	COMMAND	ENF T1		171.5250N	156.7	162.7500N	110.9	CONTINGENCY USE ONLY-ALDER RIDGE
7	TACTICAL	NIFC T1	DIV L / DIV N	168.0500N		168.0500N		
8	TACTICAL	NIFC T6	DIV D	166.7750N		166.7750N		
9	TACTICAL	NIFC T3	DIV F / DIV J	168.6000N		168.6000N		
10	TACTICAL	NIFC T7	DIV P / DIV R	168.2500N		168.2500N		
11	TACTICAL	CDF T26	DIV A	159.2925N	192.8	159.2925N	192.8	
12								
13	A/G CMD	A/G CMD	ALL BRANCHES	167.9500N		167.9500N		
14	AIR TO GROUND	A/G TAC	ALL BRANCHES	164.1375N		164.1375N		
15	MEDICAL	CALCORD	ALL BRANCHES	156.0750N	156.7	156.0750N	156.7	MEDICAL COORDINATION
16	EMERGENCY	GUARD 23	ALL BRANCHES	168.6250N		168.6250N	110.9	EMERGENCY USE ONLY
17								
18								
19								
20	EMERGENCY	GUARD 23	ALL BRANCHES	168.6250N		168.6250N	110.9	EMERGENCY USE ONLY
5. Special Instructions								
TO CONFIRM YOU HAVE THE MOST CURRENT CLONE, ENSURE YOUR DISPLAY OF CHANNEL 16 OR 20 MATCHES CHANNEL 16 OR 20 OF THE 205 - HEIGHT AND POWER ARE KEY WHEN USING RADIOS; BE AT A HIGH POINT, USE A MOBILE IF POSSIBLE, AND USE RADIO RELAYS WHEN NEEDED								
6. Prepared by (Communications Unit Leader): Name: J. BROOKS COML				Signature: 		Date/Time: 08/24/21 1600		
ICS 205 - CONTROLLED UNCLASSIFIED INFORMATION//BASIC								

ICS 205 - INCIDENT RADIO COMMUNICATIONS PLAN

1. Incident Name: Caldor Incident BRANCHES 10 / 30: CALDOR Z2		2. Date/Time Prepared Date: 08/24/2021 Time: 1600		3. Operational Period: Date To: 08/25/21 Time To: 0700				
4. Communications								
Ch#	Function	Name	Assigned To	Rx Freq	Rx Tone	Tx Freq	Tx Tone	Notes
1	COMMAND	CMD 105	ALL BRANCHES	172.4500N	114.8	166.9375N	114.8	SACRAMENTO PEAK
2	COMMAND	CMD 109	ALL BRANCHES	170.3875N	114.8	162.1750N	114.8	BIG HILL
3	COMMAND	CMD 104	ALL BRANCHES	170.7625N	114.8	165.6250N	114.8	NORTH OF HWY 50 BETWEEN DP 21 AND DP 24
4	COMMAND	CMD 1	ALL BRANCHES	170.9750N	114.8	168.7000N	114.8	LEEK SPRINGS
5	COMMAND	ENF T2		171.5250N	156.7	162.7500N	123.0	CONTINGENCY USE ONLY-LEEK SPRINGS
6	COMMAND	ENF T1		171.5250N	156.7	162.7500N	110.9	CONTINGENCY USE ONLY-ALDER RIDGE
7	TACTICAL	CDF T27	DIV G / DIV U/W	159.3075N	192.8	159.3075N	192.8	
8	TACTICAL	CDF T28	DIV H	151.1825N	192.8	151.1825N	192.8	
9	TACTICAL	CDF T29	DIV I	151.3475N	192.8	151.3475N	192.8	
10	TACTICAL	CDF T30	DIV T	151.3925N	192.8	151.3925N	192.8	
11								
12								
13	A/G CMD	A/G CMD	ALL BRANCHES	167.9500N		167.9500N		
14	AIR TO GROUND	A/G TAC	ALL BRANCHES	164.1375N		164.1375N		
15	MEDICAL	CALCORD	ALL BRANCHES	156.0750N	156.7	156.0750N	156.7	MEDICAL COORDINATION
16	EMERGENCY	GUARD 23	ALL BRANCHES	168.6250N		168.6250N	110.9	EMERGENCY USE ONLY
17								
18								
19								
20	EMERGENCY	GUARD 23	ALL BRANCHES	168.6250N		168.6250N	110.9	EMERGENCY USE ONLY
5. Special Instructions								
TO CONFIRM YOU HAVE THE MOST CURRENT CLONE, ENSURE YOUR DISPLAY OF CHANNEL 16 OR 20 MATCHES CHANNEL 16 OR 20 OF THE 205 - HEIGHT AND POWER ARE KEY WHEN USING RADIOS; BE AT A HIGH POINT, USE A MOBILE IF POSSIBLE, AND USE RADIO RELAYS WHEN NEEDED								
6. Prepared by (Communications Unit Leader): Name: J. BROOKS COML				Signature: 				
ICS 205 - CONTROLLED UNCLASSIFIED INFORMATION/BASIC				Date/Time: 08/24/21 1600				



Caldor Ground Support

Location

2441 Headington Road
Placerville, CA 95667

Fuel Locations

Card Lock

Dawson Oil Company
321 Pleasant Valley Rd
Diamond Springs, CA 95619

Line Locations (DIESEL ONLY)

Drop Point 21

13200 Hwy 50
Kyburz, CA 95720

Indian Diggins School

6020 Omo Ranch Rd
Somerset, CA 95684

Contacts

GSUL- Jeremy Christofferson (951) 287-0886

GSUL(T)- Jason Truelock- (209) 419-3678

EQPM- Fidel Fernandez (909) 520-1770

Repairs- FEM Scott Hogan (530) 708-2730

Transportation- Bob Johnson (530) 360-6313

Additional Addresses

El Dorado Shop
5660 Mother Lode Dr
Placerville, CA 95667



DEMOBILIZATION PLAN - SUMMARY CALDOR FIRE INCIDENT CA-ENF-024030

GENERAL INFORMATION

The Demobilization Plan is developed to facilitate the orderly removal and checkout of resources on the incident. By definition, surplus personnel are available for release if they have rested for a minimum of 8 hours, are cleaned up, outfitted and have a vehicle ready to depart to their next destination.

GENERAL GUIDELINES

- **NO RESOURCES WILL LEAVE THE INCIDENT UNTIL AUTHORIZED TO DO SO BY THE DEMOB UNIT.**
- Efforts will be made to ensure that all released personnel arrive at their destination prior to 2200 hours.
- All Resources will arrive at the Demobilizations Unit at their scheduled time Only.
- All government and hired vehicles leaving the incident will have a safety inspection. If a vehicle is within 1,000 miles of a "B" service, it is the responsibility of the resource to contact Ground Support and have an oil change prior to their scheduled demobilization time.
- **All Rental Vehicles will receive a safety inspection prior to leaving the incident.**
- All trainees are to keep their time up to date and report to the Training Specialist with their task books and evaluations prior to completion of the demobilization process.
- All strike team leaders are responsible to call **North Ops at 1-530-224-2466** immediately upon being released from the incident

RESPONSIBILITIES

Unit Leaders will declare resources excess to their **Section Chief**. **Section Chiefs** will declare excess resources to the Planning Section Chief through the **Resource Unit Leader**. This should be done 36 hours in advance of anticipated release. Use the **Declaration of Excess Resources sheet or General Message Form (ICS-213)** to list all excess resources. Include the resource name, request number, name of person, date and time of declared excess, and time in which the resource will be eligible to leave. Send to the **RESOURCE UNIT** where the resource will be determined to be surplus to the incident. Surplus resources will then be able to report to the **DEMOB UNIT**, receive a Demobilization Checkout Form (ICS 221), get the appropriate ICS 221 signatures, and then return the completed ICS 221 to the DEMOB UNIT prior to final release or reassignment. Resources are not to contact **South Ops** or the expanded dispatch center unless instructed to do so by the Demobilization Unit.

RELEASE PRIORITIES

1. Organized fire departments
2. OES engines
3. Hired personnel and equipment
4. Other agencies (USFS, BLM, etc.)
5. Out of region CAL FIRE forces
6. Within Region CAL FIRE Forces
7. Unit CAL FIRE Forces

TRAVEL INFORMATION

All resources will meet agency specific requirements on hours of travel per day. For CAL FIRE hand crews, a full 24 hour reset period shall be adhered to before departing from the incident. After a crew's last operational period they shall begin the demobilization release procedure during their 24 hour off shift. In addition, they must use the following complete 24 hour period as reset time before they depart from the incident.



FINANCE MESSAGE

FEDERAL RESOURCES

- Refer to Caldor Federal Finance Procedures

CAL FIRE TIME UNIT (Personnel and Hired Equipment)

- CAL FIRE PERSONNEL – Ensure you have started your eFC-33's and update after each shift. Please make sure Epay schedules are up to date.
- HIRED EQUIPMENT SUPPLIERS – Check-in with the TIME Unit and drop off your agreements.

DIVISION / GROUP - LINE SUPERVISORS

- Please turn in hired equipment shift tickets at the end of each shift.
- SHIFT TICKET BOOKS – Available in the TIME Unit for agency line supervisors only.

COMP / CLAIMS

- Damage Claims (suppression, property, vehicle)
 - ICS-213. We will need location, description of damages, and your contact information.

CALDOR FEDERAL FINANCE PROCEDURES



Finance Email: 2021.caldor.finance@firenet.gov

Finance Hotline: 530-330-5450

Directions for emailing Documents:

<p style="text-align: center;">Federal Contract Resources</p> <p>Send To: 2021.caldor.finance@firenet.gov SUBJECT: Include Key Word: <i>Equipment</i></p>	<p style="text-align: center;">Federal Overhead and Crews</p> <p>Send To: 2021.caldor.finance@firenet.gov SUBJECT: Include Key Word: <i>Time</i></p>
---	--

DOCUMENTS TO EMAIL TO FINANCE

	<p>Federal Overhead and Crews</p>	<p>Regular Government Personnel & ADs attachments: @Check-In: Crew Manifests, MOUs, or Cooperative Agreement (if applies), AD Casual Hire Sheet/RO Daily: Crew Time Report (CTR), Shift Ticket (<i>when applies</i>), receipts (fuel issues, travel receipts, etc.) @Demob: Signed OF288, Final Equipment Use Invoice</p>
	<p>Federal Contract Resources</p>	<p>Private: Contractor Attachments: @Check-In: Resource Order, Full Contract/Agreement, Certifications <i>(if required)</i>, Pre-Inspection Daily: SHIFT Tickets, receipts (fuel issues, claims, etc.) @Demob: Contractor Evaluations, Final Shift Tickets and receipt for Addition/Deductions, Post-Inspection, Final Signed Invoices</p>

FEDERAL FINANCE DEMOB PROCEDURES

All Resources will be sent their **DRAFT OF-288/OF-286's** via the Finance email. 12 hours will be provided to allow the resource to review their document and reply back to Finance with the statement "No Corrections Necessary" or a description of any issues. After Finance receives the email, any discrepancies will be resolved. Next, the resource is sent the **FINAL DOCUMENT** for signature. They will then email the signed document back to Finance, if able. Finance will then sign the **FINAL DOCUMENT** and email it back to the resource. This completes the process.

SHIFT TICKET EXAMPLE

EMERGENCY SHIFT TICKET and EVALUATION FORM					Contractor Name						
Incident or Project Name CALDOR		Incident Number CAENF024030	Request Number E#		Operator #1 BOB SMITH	Operator #2 TOM SMITH					
Agreement Number XXX - 000000 - 00					Operator Furnished By: <input checked="" type="checkbox"/> Contractor <input type="checkbox"/> Government						
Equipment Make CAT		Equipment Model / Type D6XM			Operating Supplies Furnished By: <input checked="" type="checkbox"/> Contractor <input type="checkbox"/> Government						
Serial Number 111111		Licence Number 111111			Equipment Status <input checked="" type="checkbox"/> Inspected <input checked="" type="checkbox"/> Under Agreement <input type="checkbox"/> Released by Government <input type="checkbox"/> Withdrawn by Contractor						
Equipment Use (Circle) Hours Days / Miles					Remarks/Comments ** NO DAMAGE/ NO CLAIMS						
Date Mo / Day	Start	Stop	Work	Assignment							
8/18	0700	2400	17	DIV M							
8/19	0001	0700	7	DIV M							
Vendor Rating					Govt. Rep. Name and Position - PRINT Mike Weber						
<table border="1"> <tr> <td>Poor*</td> <td>Avg.</td> <td>Good</td> <td>Exc.</td> <td>N/A</td> </tr> </table>					Poor*	Avg.	Good	Exc.	N/A	Govt. Rep. Signature <i>Mike Weber</i>	
Poor*	Avg.	Good	Exc.	N/A							
Met Performance Expectations					Contractor Signature <i>Bob Smith</i>						
Equipment in Safe Working Condition					Date 07/13/21						
Operator Skill Level					Time 0800						
Operates Safely					Date 07/13/21						
Operator's Cooperation Level					Time 0800						
Overall Performance					Date 07/13/21						
<p>* NOTE: Any rating of POOR requires an explanation in Comment Section. **Final evaluation or for more documentation, use an ICS Form 230 or equivalent.</p>					CALFIRE 297 (Rev 3-2011)						
Pink - Finance		Blue - Home Unit HE Coordinator		Yellow - Vendor	White - Govt Representative						

EMERGENCY SHIFT TICKET and EVALUATION FORM					Contractor Name						
The responsible Government Officer will complete this form each shift					Contractor Name DUDE TRANSPORT						
Incident or Project Name CALDOR		Incident Number CAENF024030	Request Number E # Here		Operator #1 BOB SMITH	Operator #2 TOM SMITH					
Agreement Number XXX - 000000 - 00					Operator Furnished By: <input checked="" type="checkbox"/> Contractor <input type="checkbox"/> Government						
Equipment Make TRANSPORT/ KENWORTH		Equipment Model / Type COZAD TRAILER /26 WHEELS			Operating Supplies Furnished By: <input checked="" type="checkbox"/> Contractor <input type="checkbox"/> Government						
Serial Number 1XP3ESMP14239012		Licence Number 9999999			Equipment Status <input checked="" type="checkbox"/> Inspected <input checked="" type="checkbox"/> Under Agreement <input type="checkbox"/> Released by Government <input type="checkbox"/> Withdrawn by Contractor						
Equipment Use (Circle) Hours Days / Miles					Remarks/Comments ** NO DAMAGE/ NO CLAIMS						
Date Mo / Day	Start	Stop	Work	Assignment							
8/18	0700	2400	17	DIV M							
8/19	0001	0700	7	DIV M							
Vendor Rating					Govt. Rep. Name and Position - PRINT Mike Weber						
<table border="1"> <tr> <td>Poor*</td> <td>Avg.</td> <td>Good</td> <td>Exc.</td> <td>N/A</td> </tr> </table>					Poor*	Avg.	Good	Exc.	N/A	Govt. Rep. Signature <i>Mike Weber</i>	
Poor*	Avg.	Good	Exc.	N/A							
Met Performance Expectations					Contractor Signature <i>Bob Smith</i>						
Equipment in Safe Working Condition					Date 07/13/21						
Operator Skill Level					Time 0800						
Operates Safely					Date 07/13/21						
Operator's Cooperation Level					Time 0800						
Overall Performance					Date 07/13/21						
<p>* NOTE: Any rating of POOR requires an explanation in Comment Section. **Final evaluation or for more documentation, use an ICS Form 230 or equivalent.</p>					CALFIRE 297 (Rev 3-2011)						
Pink - Finance		Blue - Home Unit HE Coordinator		Yellow - Vendor	White - Govt Representative						

Turn shift tickets into Time Unit.



CAL FIRE STRIKE TEAM WORKSHEET



INCIDENT NAME:	
INCIDENT #:	
STRIKE TEAM ID:	

COMMIT DATE:	
COMMIT TIME:	

REQUEST #	STRIKE TEAM LEADER NAME	CLASSIFICATION	CELL #	DUTY DAYS	HOME STATION
EQUIP #					
ID X #.					

REQUEST #	PERSONNEL NAMES	CLASSIFICATION	CELL #	DUTY DAYS	HOME STATION
EQUIP #					
ID X #.					

DOZER/CHAIN SAW HOURS:	DATE:	HRS:	DATE:	HRS:	DATE:	HRS:	DATE:	HRS:
-------------------------------	-------	------	-------	------	-------	------	-------	------

REQUEST #	PERSONNEL NAMES	POSITION	CELL #	DUTY DAYS	HOME STATION
EQUIP #					
ID X #.					

DOZER/CHAIN SAW HOURS:	DATE:	HRS:	DATE:	HRS:	DATE:	HRS:	DATE:	HRS:
-------------------------------	-------	------	-------	------	-------	------	-------	------

REQUEST #	PERSONNEL NAMES	POSITION	CELL #	DUTY DAYS	HOME STATION
EQUIP #					
ID X #.					

DOZER/CHAIN SAW HOURS:	DATE:	HRS:	DATE:	HRS:	DATE:	HRS:	DATE:	HRS:
-------------------------------	-------	------	-------	------	-------	------	-------	------

REQUEST #	PERSONNEL NAMES	POSITION	CELL #	DUTY DAYS	HOME STATION
EQUIP #					
ID X #.					

DOZER/CHAIN SAW HOURS:	DATE:	HRS:	DATE:	HRS:	DATE:	HRS:	DATE:	HRS:
-------------------------------	-------	------	-------	------	-------	------	-------	------

REQUEST #	PERSONNEL NAMES	POSITION	CELL #	DUTY DAYS	HOME STATION
EQUIP #					
ID X #.					

DOZER/CHAIN SAW HOURS:	DATE:	HRS:	DATE:	HRS:	DATE:	HRS:	DATE:	HRS:
-------------------------------	-------	------	-------	------	-------	------	-------	------

DEMOB

RETURN DATE: _____

RETURN TIME: _____



INCIDENT PEER SUPPORT:



Team members are available on the incident for any peer support related needs. The best way to get a hold of them is to call them directly or stop by the ESS Trailer

In addition, there is an onsite clinician available to meet on an individual and/or group basis

Jeremy Sanders 916-281-6472

John Kiszka 530-448-2402

or

CAL FIRE 24 Hr. Peer Support/Helpline

916-445-4337

Below are other Team Members not on the incident who can also be contacted directly:

Tony Howard 916-224-1543

Mike Aiello 916-584-0548

Warren Parrish 916-823-6641

Nikole Schutz 916-709-0434

Amber Henderson 805-794-1690

Amy Head 916-956-3277

Chris Lomanto 916-247-6974

Connie Quarisa 916-213-8697

Noelle BahnMiller 916-661-0011

Krissy Shaefer 619-592-6337

Shawna Powell 530-717-0667

Mike Deleo 916-661-0724

Watch for the signs and symptoms of stress in yourself and the people around you. Try and stay positive and get much needed rest when you can. We can do this, together!

A message to our firefighters from **ASHLEY IVERSON**.



Stay Healthy, Stay Alert and Stay Strong!



PUBLIC INFORMATION



Official Sources of Public Information

Incident Information Line: (530)303-2455	Incident Media Line: (530)497-0315
Incident Website: www.fire.ca.gov/incidents	Email List Sign Up: https://tinyurl.com/bbhw2cm5



@CALFIREAEU
@EldoradoNF



@CALFIRE_AEU



Caldor Fire Information



@CALFIREAEU
@EldoradoNF

STATUS	
Incident Start Date: August 14, 2021	Total Personnel
Acreage:	Containment:

Media Law

The California State Penal Code Section 409.5(d) allows the news media to enter scenes of disaster, riot, or civil disturbance. Properly identified members of the news media should not be restricted from entering locations specified within the code. However, this does not include crime scenes, and does not imply that the news media may interfere with incident operations while they are in the areas of concern. If entering such a location that is hazardous, they should be advised; media access cannot be prevented for safety reasons unless their presence would impede CAL FIRE's mitigation of the incident or the disturbing of evidence. When working around the media, remember:

- Media **is not permitted** on private property without the property owners permission.
- If approached and questioned by the media and or the public, talk about your assignment or task at hand. Remember to wear all the appropriate PPE.
- If needed call for an incident PIO through the chain of command.
- Never speculate, give opinions or speak for others.
- There is no such thing as an "off the record" comment.

CAL FIRE Social Media Policy (Social Media 0691)

Social Media is increasingly being used by public agencies, the media as well as the public. This form of communication continues to grow rapidly in order to supply the instant gratification needs of society. Therefore when on a CAL FIRE incident you will adhere to the CAL FIRE Social Media Policy, 0691. You can get further information about the CAL FIRE Social Media Policy from the incident Public Information Officer. While assigned to the incident, there will be no posting of:

- Inappropriate information or materials, no opinions, no endorsements, inappropriate pictures or videos

Lost and Found

The Information Section will manage Lost and Found items for the incident. If you have lost an item leave your contact information and what you have lost at the Information Section. If you have found an item on the incident bring the item to the Information Section with your contact information as well.

Incident Base Camp Mailing Address

c/o Public Information Office/Trailer
102 Placerville Dr.
Placerville, CA 95667



WATER USAGE LOG

DATE: _____

Division / Group: _____

AGENCY ID / VENDOR: _____

I.e.. Strike Team 1110C, Acme Water Tenders

REQUEST # _____

WATER SOURCE LOCATION	Hydrant	Open source i.e. pond	Tank	Gallons Used	Property Owner

****Please note if you made contact with property owner and their contact.
(Use reverse side if needed.)**

Owner Information: _____

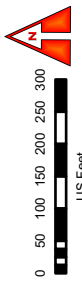
Turn in to Comp/Claims Daily

The intent of this document is intended to track, record and validate the amount of water used on a incident. It's not intended to review the performance of equipment using the water on an incident.



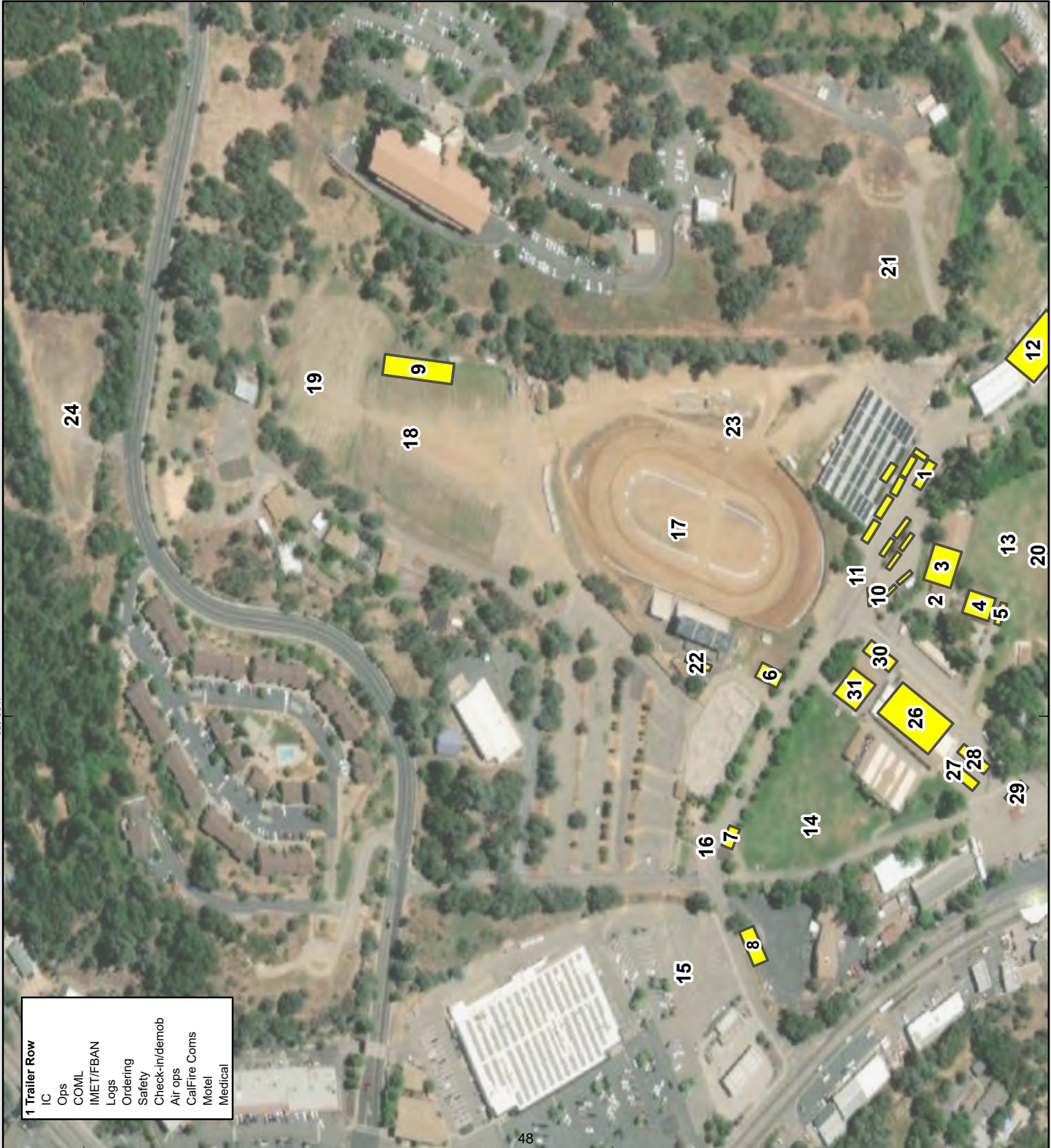
FACILITIES MAP
Caldor Incident
 CA-ENF-024030

- 1 Trailer Row
- 2 GISS
- 3 Meeting
- 4 Equipment time
- 5 FSC
- 6 Lunch/Water/ice
- 7 Liason
- 8 PIO/media
- 9 Inmate shower/laundry
- 10 Clerical
- 11 ESS
- 12 Supply
- 13 Briefing
- 14 Overhead parking
- 15 Sleeper trailers
- 16 Main gate
- 17 Tent sleeping
- 18 Engine & dozer parking
- 19 Inmate sleeping
- 20 Tent sleeping
- 21 Vendor parking
- 22 Shower
- 23 Laundry
- 24 Dozer parking (Ray Lawler Rd)
- 25 Facilities
- 26 Feeding
- 27 Plans
- 28 Situation
- 29 READ
- 30 MKU
- 31 CAL-MAT

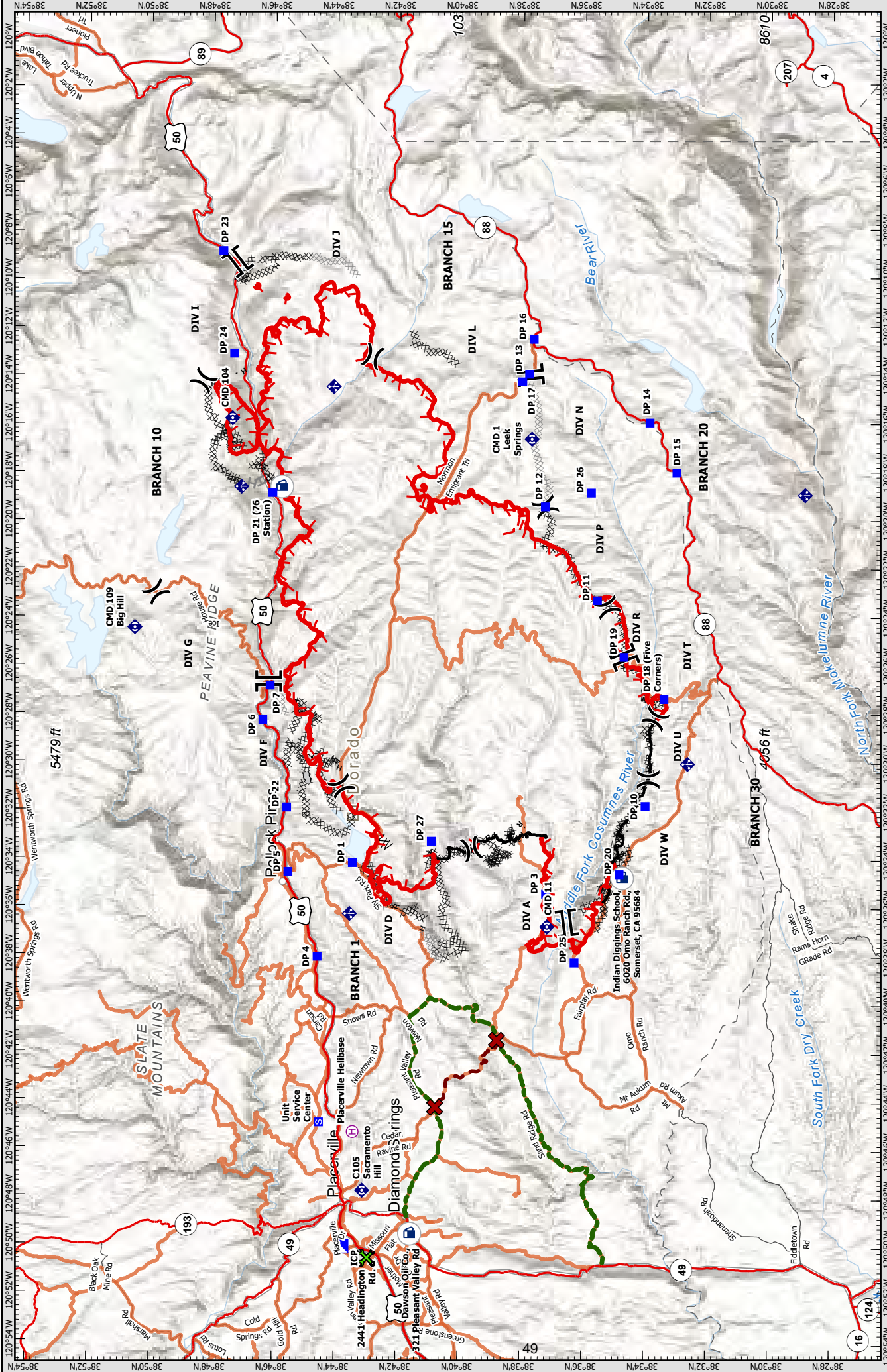


DISCLAIMER:
 The displayed incident data is approximate and should not be used for legal purposes. The data was generated from GIS data maintained by various sources and approved for use by the Incident Management Team. It is not intended for use in any legal proceeding or engineering standards.

MT 6 GIS
 8/23/2021
 8:10 PM



- 1 Trailer Row**
- IC
 - Ops
 - COMIL
 - IMET/FBAN
 - Logs
 - Ordering
 - Safety
 - Check-in/demob
 - Air ops
 - CalFire Coms
 - Motel
 - Medical



DISCLAIMER:
 The displayed incident data is approximate and should only be used for general information. The data is generated from GIS data maintained by CAL FIRE. CAL FIRE is not responsible for any inaccuracies or engineering standards.

- Repeater
- Completed Dozer Line
- Completed fuel Break
- Completed Hand Line
- Planned Dozer Line
- Planned Hand Line
- Helibase
- Division Break
- Branch Break
- Incident Command Post
- Drop Point
- Staging Area
- Mobile Weather Unit
- Off-Site Fuel
- Ground Support
- DO NOT TRAVEL
- Bucks Bar Rd
- Water Tender Alt Route

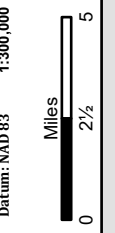
TRANSPORTATION MAP

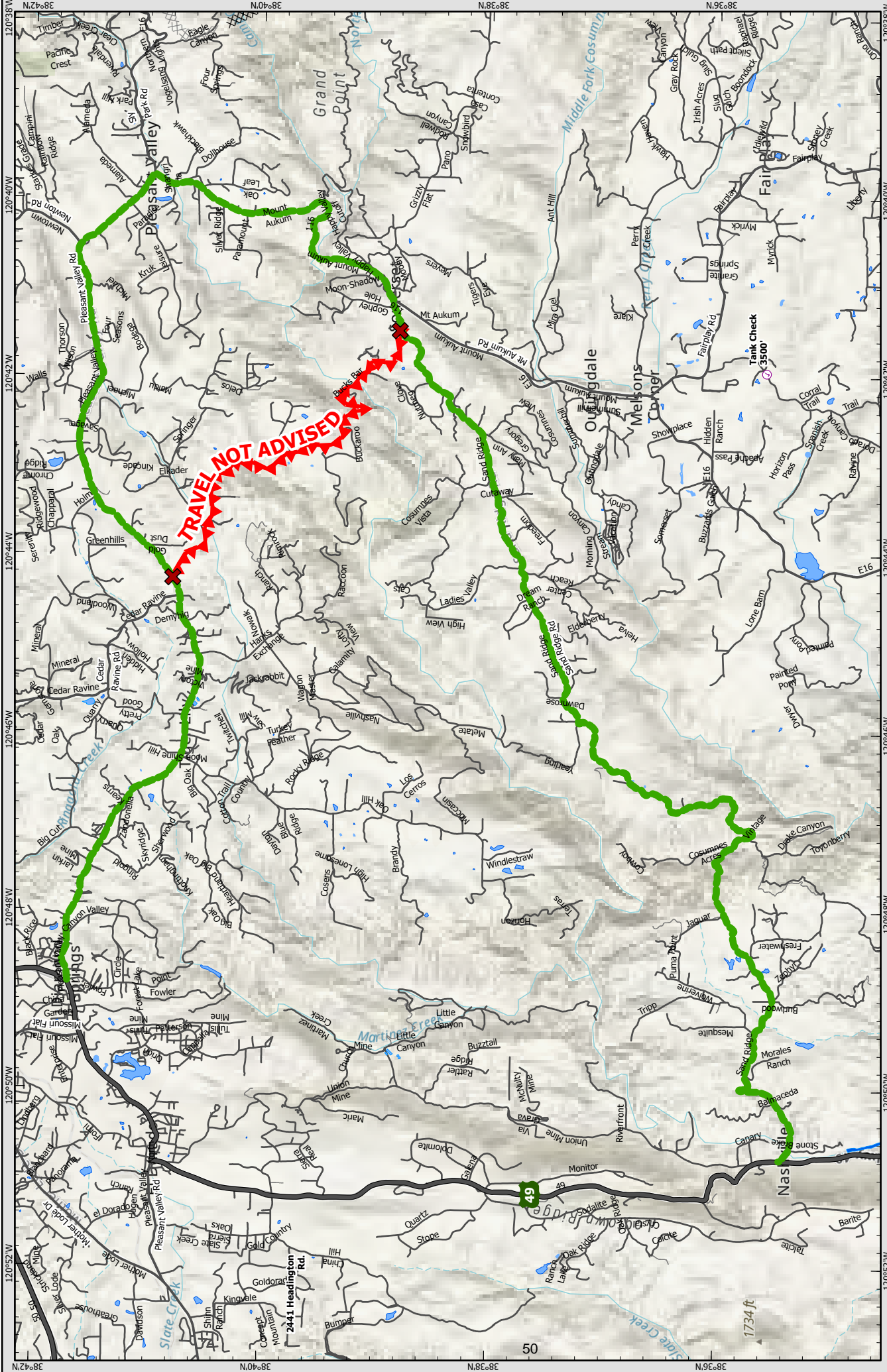
Caldor Incident

CA-ENF-024030



Datum: NAD 83 1:300,000





Water Tender Route
Calder Incident
CA-ENF-024030

- Off-Site Fuel
- Ground Support
- DO NOT TRAVEL
- Bucks Bar Rd
- Completed Dozer Line
- Planned Doz
- LocalRoads

Water Tender Route
Calder Incident
CA-ENF-024030

Datum: NAD 83 1:81,501

Miles 0 0.65 1.3

DISCLAIMER:
 The displayed incident data is approximate and should only be used for planning purposes. The supporting base layer was generated from GIS data maintained by the California Department of Forestry and Fire Protection. Accuracy is not guaranteed for navigation or engineering standards.

IMF GIS
 8/27/2021
 3:46 PM

UNIT LOG (ICS 214)

1. Incident Name: Caldor Incident	2. Operational Period: Date From: <u>8/25/21</u> Date To: <u>8/26/21</u> Time From: <u>0700</u> Time To: <u>0700</u>
---	--

3. Unit Name/Designators	4. Unit Leader (Name and ICS Position)
---------------------------------	---

5. Personnel Assigned/Designators

NAME	ICS POSITION	HOME BASE

6. Activity Log (Continue on Reverse)

TIME	MAJOR EVENTS

7. Prepared By: _____ Date/Time: _____