

INCIDENT ACTION PLAN

CALDOR INCIDENT WEST ZONE

CA-ENF-024030

P5N8GM21

Friday



OPERATIONAL PERIOD

9/3/2021 0700

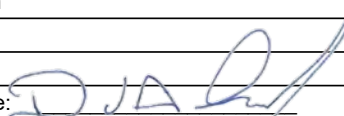
to

9/4/2021 0700

[Click Here](#)
[Current Incident Link](#)



ORGANIZATION ASSIGNMENT LIST (ICS 203)

1. Incident Name: Caldor Incident - West Zone		2. Operational Period: Date From: 9/3/2021 Time From: 0700		Date To: 9/4/2021 Time To: 0700	
3. Incident Commander(s) and Command Staff:			7. Operation Section:		
IC/UC's	J. Veik / J. Reinarz / D. Martin (T)		Operations	E. Schwab / B. Monday	
Deputy	M. Marcucci / J. Janssen (T)		Deputy Operations	S. Lane / C. Bogan (T)	
Safety Officer	J. Buchmeier / J. Rabuck / J. Novak / T.Adams (T)		Night Ops	T. Ernst	
Information Officer	R. Brocchini / K. Greene				
Liaison Officer	J. Kiszka / M. Watson (T)				
4. Agency/Organization Representatives:			Branch	I	
USFS AREP	J. Marsolais		Division/Group	A / D	J. Cazier / J. Scofield (T)
Cal Fire AREP	M. Blankenheim		Division/Group		
EDSO	G. Almos		Division/Group		
SPI	T. Tate		Branch	X	M. Martinez
PG&E	M. Webb		Division/Group	F / G	C. Allen (T) / D. Winnacker (T)
COVID-19 Advisor	S. Hall		Division/Group	H	M. Brown
EMSA Agency Admin	B. Gates		Division/Group	I	C. Pereria (12) / J. Spindler (T)
Grizzly Flats CSD	J. Lauther		Division/Group	Contingency	B. Porrizzo / M. Khazaal (T)
Lake Valley Fire Dist	B. Zlendick		Division/Group		
IBA	J. Bennett		Division/Group		
Amador County Sheriff	J. Navarre		Branch	XX	T. Richter / D. Bakken (T)
Placerville PD	J. Wren		Division/Group	N / P	B. Muenzer / W. Almand (12)
CCC	H. Garcia / L. Setzer-Gonzalez		Division/Group	Kirkwood Structure	J. Miller (12) / J. Jones (T) (12)
CHP	R. Hatfield		Division/Group		
Cal Trans	G. Duffy		Division/Group		
BLM	J. Martinez		Branch	XXX	
Cal OES	K. Bailey		Division/Group	R / T / U / W	F. Burrows (T) (12)
AT&T	K. Young		Division/Group		
El Dorado Irrigation Dist.	D. Corcoran		Division/Group		
5. Planning Section:			Division/Group		
Chief	G. Garcia / D. Carter		Division/Group		
Deputy	D. Scheurich (T) / B. Phillips (T)		Division/Group	ICP	D. Hames (12) / R. McMillen (12)
Resource Unit	J. Anderson / M. Thomas / B. Torosian		Division/Group		
Situation Unit	I. Crossley / J. Abeel / D. Van Goidsenhoven		Staging Area		
Demobilization Unit	T. Shevenell / L. Pasero / J. Perez (T)		Division/Group		
GISS	C. Poli		Division/Group		
FBAN	S. Volmer		Division/Group		
IMET	J. Dudley		Division/Group		
Hired Equipment Tech Spec.	C. Myers / M. Meirinho (T)		Air Operations Branch:		Director: C. Inwood (T)
Training Specialist	S. Vargas / J. Rustice (T)		Air Operations Branch Deputy		M. Stanford
Crew Tech Spec.	J. Rafferty		Air Support Group Supervisor		F. Abril (T)
ENF Resource Advisor	A. Brown		Air Tactical Group Supervisor		
6. Logistics Section:			Helibase Manager		R. Johnson
Chief	S. Dohman / Z. Cunningham				
Deputy Chief	J. Warden (T) / N. Glidden (T)		8. Finance/Administration Section:		
Supply Unit	P. Lee / B. Luiz (T)		Chief	S. Hogan / D. Reid	
Facilities Unit	D. Zumkeller / J. Finley		Deputy Chief	G. Belk / S. Vincent (T)	
Ground Support Unit	J. Christofferson		Time Unit	J. Navarro / J. Andrade (T)	
Communications Unit	J. Brooks / B. Rapp		Procurement Unit	M. Lamonica / H. Horn (T)	
Medical Unit	J. Segura / M. Hnat		Comp/Claims Unit	B. Stirton	
Motel Unit	J. Tomsich / C. Miller		Cost Unit	J. Tapia	
Food Unit	M. Riveria / M. Wong (T) / B. Brewer (T)				
Prepared By: Name:	D. Scheurich	Position/Title:	PSC1	Signature:	
ICS 203		Date/Time:	9/2/2021 2300 hours		



INCIDENT Weather Forecast



FORECAST NO: 16
 PREDICTION FOR: 24 Hour Shift
 SHIFT DATE: 09/03/21
 FORECAST ISSUED: 09/02/21 1700

NAME OF FIRE: Caldor West Zone
 UNIT: USFS Eldorado NF
 SIGNED: James Dudley
 Incident Meteorologist

WEATHER DISCUSSION: High pressure will to build over the fire area over the next few days with lighter winds aloft and terrain driven slope and valley winds prevailing. Winds aloft will become weak easterly Friday and Saturday. Temperatures will trend upward and relative humidity will remain rather low with only moderate recoveries.

. FRIDAY . . .

Sky/weather Sunny.
 Max temperature 72-77 Branches 10 and 20 and 77-88 Branches 1 and 30.
 Min humidity 13-18 percent.
 Wind (20 ft)
 Slope/valley Downslope/down canyon 4-8 mph with gusts to 13 mph through 0900 then becoming upslope 4-9 mph with gusts to 15 mph except gusts to 20 mph along the Highway 50 corridor.
 Ridgetop East 8-13 mph with gusts to 20 mph through 1200 then becoming west to northwest 3-6 mph.
 Mixing height Increasing to around 6200 ft AGL.
 Transport winds East around 5 mph.

. FRIDAY NIGHT . . .

Sky/weather Clear.
 Min temperature 45-55 Branches 10 and 20 and 55-63 Branches 1 and 30.
 Max humidity 22-27 percent.
 Wind (20 ft)
 Slope/valley South to southwest 3-8 mph with gusts to 13 mph through 1900 then downslope/down canyon 4-9 mph with gusts to 13 mph lower drainages.
 Ridgetop East-southeast 7-11 mph with gusts to 18 mph.
 Mixing height Lowering to near surface.
 Transport winds East around 7 mph.

. SATURDAY . . .


Sky/weather Sunny.
 Max temperature 76-81 Branches 10 and 20 and 82-92 Branches 1 and 30.
 Min humidity 12-17 percent.
 Wind (20 ft)
 Slope/valley Downslope/down canyon 4-8 mph with gusts to 13 mph through 0900 then becoming upslope 4-9 mph with gusts to 15 mph except gusts to 20 mph along the Highway 50 corridor.
 Ridgetop Southeast 6-10 mph through 1200 then west to northwest 3-7 mph.
 Mixing height Increasing to around 6500 ft AGL.
 Transport winds Southeast around 8 mph.

Incident Weather Station Data - SCAN Code with Smart Phone

- Branch 1: Pine Tree Rd (TR113), Hawkeye Rd (PG433)
- Branch 10: Sugarloaf (SKBC1), Strawberry (TT431), Owens Camp (OWNC1)
- Branch 20: Leek Peak (TT017), Eldorado Portable NE DP14 (TS445)
- Kirkwood (TT436)
- Branch 30: Barney Ridge (TT022), So So Road (PG415)



FIRE BEHAVIOR FORECAST

FORECAST NUMBER: 16	TYPE OF FIRE: WILDFIRE
FIRE NAME: CALDOR WEST ZONE CAENF-024030	OPERATIONAL PERIOD: 9/3-9/4/21 0700-0700
DATE ISSUED: 9/2/2021	TIME ISSUED: 1900
UNIT: ELDORADO NATIONAL FOREST	SIGNED:  Typed/printed: Stephen Volmer FBAN

INPUTS

WEATHER SUMMARY:

Sunny and warm. Daytime humidity remains low 13-18%. Winds upslope/upcanyon after 9am 4-9mph with gusts to 15mph. Hwy 50 corridor could experience gusts to 20mph. Ridgetop winds east 9-13mph with gusts to 20mph, turning west northwest 3-6mph after 12:00. Nighttime temperatures will be 45-63 degrees with humidity 22-27%, with ridgetop winds east southeast 7-11mph gusting to 18mph. Expect a thin inversion in the lower elevations and drainages to form overnight.

****Review the weather forecast for more details and QR for RAWs unit information****

OUTPUTS

FIRE BEHAVIOR

FUEL MODEL	RATE OF SPREAD FT/MIN	FLAME LENGTH FT	SPOTTING DISTANCE	PROBABILITY OF IGNITION
TIMBER LITTER	9	6	.6 miles	88%
UNDERSTORY	22	11	.6 miles	88%
BRUSH	67	11	.3 miles	88%

GENERAL:

BRANCH I...Continued hot material along the control lines will be a source for ember cast and rollout. Be alert for shifting upcanyon/downcanyon winds in the early morning and late evening.

BRANCH 10...Backing fire will continue to slowly work its way down to Hwy 50 and around the structures. The fire will continue to be active in Div I, with group tree torching possible.

BRANCH 20...The fire will continue to be active in Div N. Expect spot fires to continue to be found and initiate new fires. Interior islands, heavy fuels, and timber will continue to burn out.

BRANCH 30...Hot material will continue to be found and threaten the control lines. Interior islands will have the potential to burn out causing ember-cast that could create new spot fires.

SPECIFIC:

- Erratic winds and fire behavior will be possible in all the drainages, especially those along Hwy 50, Div I, Div D.
- Fuels remain extremely dry. Review the Fuels and Fire Behavior Advisory.
- Spotting from group and single tree torching will continue to be the major source of fire spread.

AIR OPERATIONS:

Thin inversion layer burning off early in the morning. Transport winds out of the east 5mph with a mixing height of 6,200' AGL. Air resources may be limited or ineffective due to reduced visibility.

Sunset 19:29 Sunrise 06:35

SAFETY:

-Deceptively quiet areas of large fires. Always keep your situational awareness up.
- On a hillside where rolling material can ignite fuel below you.
- Fire weakened timber, hot ash pits, and stump holes remain all over the incident area.

Fuels and Fire Behavior Advisory

Northern California

September 1, 2021 to September 15, 2021



Subject: Potential for extreme fire behavior due to critically low live and dead fuel moistures, very dry conditions resulting from persistent drought, minimal snowpack and spring precipitation, and elevated fire danger rating values across much of northern California.

Discussion: Fires burning in northern California are exhibiting extreme fire growth based on critical fuel conditions. Fire spread is fuel driven and does not depend on wind to spread. Events with wind have led to extreme rates of spread. Surface fuels are very receptive to embers. Long range spotting, area ignition, and group torching is occurring on large fires frequently.

Difference from normal conditions: Northern California is in a drought; currently with 90% at Extreme to Exceptional levels. The drought is expected to persist or intensify throughout the fire season. Deficient rainfall and snowpack with early melt off has resulted in fuels that are below average in dryness, with record setting conditions for most areas.

Concerns to Firefighters and the Public:

- Energy Release Component (ERC) at numerous weather stations set record maximums already this year and are running at or above the 97th percentile in most cases. Expect increased fire intensity and spread rates in these areas. Early season extreme fire behavior has been observed in both light and heavy fuels. **Anticipate increased spread rates, spotting, and active nighttime burning.**
- The combination of persistent drought and record-low rainfall and snowpack amounts has led to very low live and dead fuel moistures. Low 1000-hour fuel moistures have been evidenced by complete consumption of dead fuels on recent fires. Live fuel moistures in grasses, shrubs and trees, have already reached critical levels in many areas of Northern California due to limited green-up this spring. **Expect fires to ignite easier and spread faster. Do not expect fires to exhibit reduced fire behavior when entering areas of live fuels; anticipate increased spread rates and spotting.**
- Direct attack is often not feasible under regular diurnal wind conditions with ground resources. And aviation utilization is often insufficient in moderating rate of spread without immediate heavy ground resource response. **Anticipate higher resistance to control in all fuel types.**
- Already this year, Northern California has experienced large fire activity and multiple team deployments. California will likely experience an extended fire season. It is important to be mindful of and manage fatigue for all resources. **Everyone, every day, returns home safely.**

Mitigation Measures:

- Local and inbound fire personnel need to be aware that fire behavior across the state is exceeding normal expectations for this time of the year. **Local briefings need to be thorough and highlight specific fire environment conditions. These include but are not limited to local weather forecasts, Pocket Cards, ERC's, live and dead fuel moistures.**
- Suppression actions need to be based on good anchor points, escape routes, and safety zones. **Remember LCES. Experienced lookouts are essential under these conditions.**
- Base all actions on current and expected behavior of the fire. **Augment initial attack resources as incident activity dictates.**

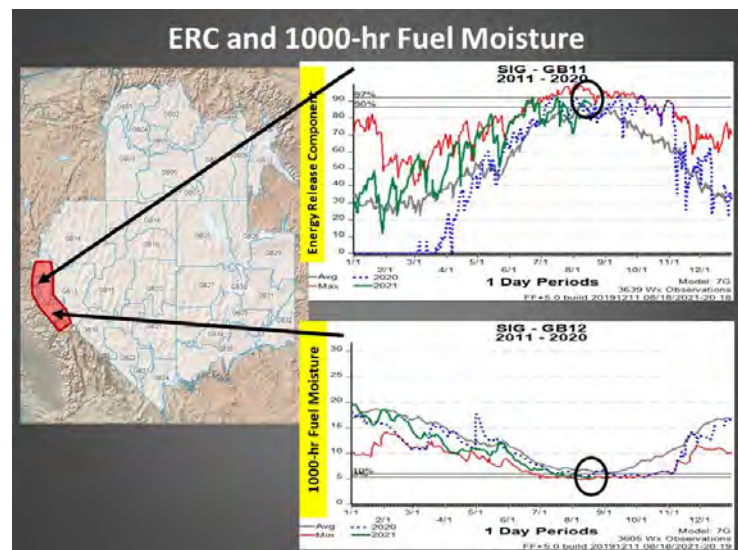
Area of Concern: Northern California except for the following Predictive Service Areas: North Coast and Bay Marine, west of Highway 101 in Mid-Coast to Mendocino and Diablo-Santa Cruz, and the north eastern portion of Far Eastside.

Fuels and Fire Behavior Advisory

Sierra Front – Above 5,500 Feet

Valid August 20th – September 3rd, 2021

Subject: NEAR RECORD LOW 1000-hr fuel moisture and Sagebrush fuel moisture, and ABOVE NORMAL ERCs continue along the Sierra Front above 5,500 feet due to continued dry weather. Fuel conditions will remain exceptionally dry through August with upcoming warm, dry and breezy weather and will increase fire behavior, especially with increases in wind.



Discussion: Extreme fire behavior was observed on the Tamarack Fire in late July. Higher relative humidity recovery at night and light precipitation did not alter exceptional fire behavior. It took longer term wetting rains over several days to eventually lower fire behavior. The fire remained active throughout the day and overnight and experienced group tree torching, crowning, running, and spotting. Manzanita burned quickly like a fine fuel grass.

Difference from normal conditions: Fuel moisture remains exceptionally low due to hot and dry conditions over the last few months, and the lack of precipitation during the 2020/2021 winter. **1000-hr fuel moisture along the Sierra Front remains near RECORD LOWS**, while ERCs remain above normal. Near **RECORD LOW Sagebrush** fuel moisture continues to be a significant contributor to fire spread in addition to the heavy dead fuels and dry Pinyon-Juniper. **Prolonged periods of warm and dry weather with periods of breezy winds through the rest of August will keep fuel moisture exceptionally low.**

Concerns to Firefighters and the Public:

- Anticipate fire behavior activity picking up earlier in the day and extending well into the evening and overnight.
- Short and mid-range spotting should be expected with long-range spotting greater than ½ mile or more in all fuel types and a probability of ignition generally over 80% based on current conditions.
- Under the right atmospheric conditions or favorable alignment of fuels and slope, expect potential development of large plume dominated fires.
- Fires more likely exceeding initial attack, unless significant allocation of aerial and ground resources is used.
- Anticipate all fuel types to ignite easily and exhibit advanced to extreme fire behavior.
- Commonly used terrain features or natural barriers (such as meadows, sparse fuels, etc.) used as a fire line may not be as successful in containment.

Mitigation Measures:

- Additional resources will be required for successful initial attack.
- Ensure you are planning well ahead of the fire.
- Retardant and/or bucket drops are NOT effective unless immediately followed up with firefighters.
- Establish trigger points in anticipation of expected fire behavior and adhere to them.
- Consult the latest weather and fire danger information at <http://qacc.nifc.gov/gbcc/>.

Area of Concern: The Sierra Front above 5,500 feet.

Issued By: Great Basin Coordination Center Predictive Services.



SAFETY MESSAGE

CALDOR INCIDENT WEST ZONE

1. Incident Name: CALDOR	2. Operational Period: Date From: 09/03/21 Date To: 9/04/21 Time From: 07:00 Time To: 07:00
--------------------------	--

“SLOW DOWN”

Use Extreme Caution when Driving through **SMOKE**; Safe Speeds are a must!
 Watch for congestion and blind corners; watch for civilian traffic.
 Evaluate your driving routes; monitor speed, gear selection, & brakes.
 When Moving Apparatus, Utilize backers and spotters, When in Doubt Scout It Out.

GRAVITY ISSUES

Tree Hazards – Look up, look around, identify and mark.
 Trees don't just **Threaten** the line, they threaten your **LIFE!**
Watch Out for Roll Out and Falling Rocks.

FATIGUE & COMPLACENCY

MONITOR yourself and your as personnel for **FATIGUE** and **DEHYDRATION**.
 Maintain Good Work Rest Cycles, Seek Shade when possible.
 Time to Think – Time to Drink! **Stay Hydrated.**

ENGAGEMENT: Know Your Plan and Communications

PPE for the **potential of the operation**, not just the work at hand.
 Communicate your **Temporary Refuge Areas & Safety Zones**; Execute Decision Points.
Critical Rates of Spread: Long Range Spotting & Receptive Fuel Beds.

Don't Let Pressure Alter Your Decision-Making Process

PLANNING = **Primary, Alternate, Contingency, Emergency.**
 If you can **predict it**, you can **prevent it** or history will repeat itself. **Speak Up.**
 Urgency cannot allow short-cuts, monitor communicated plans.

HEALTH & WELLNESS: Take Care of Ourselves & Others

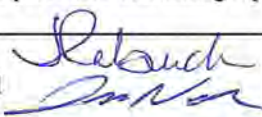

Be cognizant of COVID-19 Best Practices – Wipe Surfaces & Door Handles.
 Social Distancing encouraged, Masks Mandatory at Operational Briefing Areas.

▪ 4. Site Safety Plan Required? Yes No

5. Prepared by: Name: J. Novak SOF1 Jen Rabuck SOF1

ICS 208	Date/Time September 2, 2021 / 1900
---------	------------------------------------

**CALDOR INCIDENT WEST ZONE
RISK ANALYSIS (ICS 215-A)**

DIV	HAZARDOUS ACTIONS/CONDITIONS	MITIGATIONS / WARNINGS / REMEDIES
ALL	EXTREME FIRE BEHAVIOR	<p>Know your LCES and maintain Situational Awareness. Use experienced Lookouts and multiple vantage points. Follow downhill line construction guidelines & be diligent if fire spots below you. Have a known contingency plan with established decision points, accountability plan, and reassembly location(s). Acknowledge intricacies in tactics (firing and holding): critical resources, possible weaknesses in the line and methods planned to adjust. Use spot forecasts and seek input from IMET and FBAN. Validate on site observations with expectations once tactics are being implemented. Use PACE planning: Primary, Alternate, Contingency, Emergency</p>
ALL	COVID 19, ILLNESS, & HYGIENE	<p>Adhere to local, state, federal and CDC health guidelines. Maintain social distancing. Wear a mask regardless of vaccination status when in clusters, briefings, chow lines, etc. Report any illness symptoms immediately to a supervisor. Hygiene, hand washing, and disinfecting of surfaces & handles often. Enact practices that protect all assigned resources despite personal opinions -err on the side of the potential best outcome to protect against all infectious diseases.</p>
ALL	FATIGUE, HEAT & DEHYDRATION	<p>Don't underestimate the task at hand. Adhere to work/rest cycle for all tasks. Drink water before, during and after shifts, up to 1.5 gal. per shift. Review Heat Related Emergencies (IRPG Pg. 109). Seek shade when you can. Watch for stack-effect of fatigue and exhaustion; REST & Plan operations.</p>
ALL	COMPLACENCY	<p>Be alert for signs of fatigue and distractions; remain engaged. Intentionally maintain situational awareness. Have the right radio clone. Know your adjoining forces and FREQUENCIES. Do not expect closures and checkpoints to limit access – residents will find ways into closed areas.</p>
ALL	BEARS, REPTILES & BEES	<p>This incident area is home to RATTLESNAKES, bees and wasps. Be bear aware: secure food, trash bins and sleeping locations to deter possible interactions. Be cautious to other natural animals and hazards associated with each.</p>
ALL	STEEP TERRAIN / ROLLING DEBRIS	<p>Watch your footing while hiking in steep terrain. Expect loose/rolling debris, particularly in areas that fire has burned away surface fuels. Maintain Situational Awareness. Reassess Tree hazards frequently in the work area. Dangerous Mountain Roads – SLOW Defensive Driving. Watch for trees and rocks falling across roads and fire lines.</p>
ALL	GRAVITY HAZARDS: ROLLING DEBRIS AND SNAGS/ WEAKENED TREES	<p>The ones that haven't fallen yet; look up, look around Identify Hazard Trees. Drought-Stressed Trees are weakened – dry soils provide no support for root systems! Communicate the hazard. Flag and make proper notifications. Use equipment to mitigate hazard trees where feasible. Do not fall trees out of your certification level. Evaluate wind and lean prior to cutting.</p>
ALL	DRIVING HAZARDS	<p>SLOW DOWN! That means ALL resources! Use headlights – avoid “auto headlight” settings that may not activate in smoke or do not trigger taillights to turn on. Do 360s before moving vehicles. Utilize Chocks. Drive defensively on steep winding roads. Watch Speed through communities; public perception and safety are key. Utilize spotters and backers; when in doubt, scout it out. Expect smoke densities and locations to change multiple times during the shift. Keep roadways clear for through traffic and park away from travel paths.</p>
ALL	AIRCRAFT OPERATIONS	<p>Monitor air-to-ground frequencies; they are your eyes in the sky. Use air-to-ground frequency to communicate with aircraft. Use clear, concise statements when directing aircraft; CLEAR THE LINE! Do not rely on aircraft: visibility & priorities can change quickly.</p>
Incident Name: CALDOR INCIDENT WEST ZONE		Prepared by: Jen Rabuck, SOF1  Jason Novak, SOF1  OPERATIONAL PERIOD 0700 - 0700



Employee Response Action Plan

COVID-19 Positive Test or COVID-19 Positive Clinical Symptoms Presentation

- COVID 19 Symptoms: Cough, SOB, Fever or afebrile, Chills, Muscle Pain, Sore throat, Loss of taste/smell
- Employee informs Company Officer and Strike Team Leader of presumed/confirmed COVID-19 symptoms.
- Employee advised to seek evaluation by Medical Unit and CAL MAT or base camp medical unit.
- Crew initiates cleaning measures. Mask, safety glasses, gloves worn. (If needed, LOGS will assist)
- Medical Unit to notified IC, Liaison, Safety and Logistics ASAP. Medical Unit will notify COVID-19 Public Health Officer and determine need for testing and locations.

Incident Action Plan

- Company Officer / Strike Team Leader notified of personnel with COVID-19 positive test or symptom.
- Medical Unit evaluates individual(s) and need for care and evaluation.
- IC, Liaison, Safety and Logistics notification made to determine course of incident evaluation and response.
- Line Chief, Agency Administrator, and Region Office updated upon notification

Facilities Response

- Medical and Safety notified
- Incident Notification
- Disinfection plan initiated.
- Resource Status Evaluated

Medical Evaluation & Contact Tracing

- Personnel interviewed by Medical Unit . List of Positive contacts made in the last 5 days acquired. All Exposed are required to wear surgical mask, self monitor for Fever/Resp symptoms for up to 14 days (exposed personnel are subject to COVID-19 testing)
- Home Unit / Department utilized and retrospective tracking of Positive COVID-19 personnel inter-actions are identified within the last 5 days.
- Home Unit / Department updated by Company Officer / Strike Team Leader.
- Public Health Department is contacted and updated by IC or Designated Representative.
- Positive COVID-19 Employees w/symptoms will need to be evaluated by Health Department conducting testing, prior to returning to assignment.
- Positive COVID-19 Employees w/o symptoms may be required to be evaluated and resource status will be reviewed prior to returning to assignment.

ASSIGNMENT LIST (ICS 204 WF)

CONTROLLED UNCLASSIFIED
INFORMATION//BASIC

1. Incident Name:	2. Operational Period:	3. Branch	Division
Caldor Incident - West Zone	Date From: 09/03/21 Date To: 09/04/21 Time From: 0700 Time To: 0700	I	A / D
4. Operations Personnel:		Page 1 of 2	

Operations Section Chief: E. Schwab / B. Monday	Night Ops: T. Ernst
Branch Director:	Branch Safety: R. Clarke
Division/Group Supervisor: J. Cazier / J. Scofield (T)	Air Attack: F. Abril (T)

5. Resources Assigned:	** Resources Below in Bold are 12 Hour **							
Resource Identifier	ALS	LWD	Leader	Personnel	Request #	Hours	Reporting Location	
STC BEU 9460C		9/6	C. Smith	19	E-20065	0700-0700	DP-28	
STC MVU 9330C			J. Clays	16	E-20543	0700-0700	DP-28	
STC AEU 9272C		9/13	M. Weidner	18	E-20896	0700-0700	DP-28	
T/F XST 4202		9/7	D. Whipkey	17	E-20242	0700-0700	DP-28	
T/F Pioneer			K. Earl	13	E-9422	0700-1900	DP-28	
ENG FWF 653		9/6	S. Strider	4	E-279	0700-1900	DP-28	
ENG TXS 6160		9/8	J. Hawkins	3	E-324	0700-1900	DP-28	
ENG ELH 327		9/16	C. Anthis	4	E-20653	0700-1900	DP-28	
ENG PVT E-272		9/6	C. Bates	3	E-272	0700-1900	DP-28	
ENG PVT E-284		9/6	J. Wayne	3	E-284	0700-1900	DP-28	
ENG PVT E-293		9/9	C. Whitegrass	3	E-293	0700-1900	DP-28	
ENG PVT E-328		9/8	M. Finn	3	E-328	0700-1900	DP-28	
ENG PVT E-21121			G. Clayburn	3	E-21121	0700-1900	DP-28	
STG MEU 9114G			M. Botts	33	C-20094	0700-0700	DP-28	
STG CZU 9174G (CDCR)		9/7	J. Pearlman	36	C-20016	0700-0700	DP-28	
CRW PVT C-27		9/5	R. Ibarra	20	C-27	0700-1900	DP-28	
CRW PVT C-30		9/7	C. Valentine	20	C-30	0700-1900	DP-28	
CRW PVT C-31		9/7	Z. Curtis	20	C-31	0700-1900	DP-28	

6. Work Assignments:
Mop up 100' in from control lines.
Pull hose lays and back haul trash.
Tactical patrol.

7. Special Instructions:
REAF A. Brown / A. Bonskowski

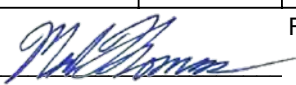
ALS AMB 4

8. Communications							
Name	Ch	Function	Rx Freq	Rx Tone	Tx Freq	Tx Tone	Notes
COMMAND: Please refer to Communications Plan.							
VTAC11	8	TACTICAL	151.1375N	156.7	151.1375N	156.7	
A/G TAC	14	AIR TO GROUND	164.1375N		164.1375N		
CALCORD	15	MEDICAL	156.0750N	156.7	156.0750N	156.7	MEDICAL COORDINATION
GUARD 3	16	EMERGENCY	168.6250N		168.6250N	110.9	EMERGENCY USE ONLY

9. Prepared by: Name:	M. Thomas	RESL	24 Hr Shift: 120
	Signature:		12 Hr Shift: 99
ICS 204	Date/Time: 9/2/2021 2200		Total: 238

ASSIGNMENT LIST (ICS 204 WF)

CONTROLLED UNCLASSIFIED
INFORMATION//BASIC

1. Incident Name:		2. Operational Period:				3. Branch		Division	
Caldor Incident - West Zone		Date From: 09/03/21	Date To: 09/04/21			I		A / D	
		Time From: 0700	Time To: 0700						
4. Operations Personnel:						Page 2 of 2			
Operations Section Chief: E. Schwab / B. Monday			Night Ops: T. Ernst						
Branch Director:			Branch Safety: R. Clarke						
Division/Group Supervisor: J. Cazier / J. Scofield (T)			Air Attack: F. Abril (T)						
5. Resources Assigned:		** Resources Below in Bold are 12 Hour **							
Resource Identifier	ALS	LWD	Leader	Personnel	Request #	Hours	Reporting Location		
CRW PVT C-32		9/7	K. Parker	20	C-32	0700-1900	DP-28		
CRW PVT C-59		9/26	A. Calderon	20	C-59	0700-1900	DP-28		
DOZ PVT E-20185			K. Pearrish	2	E-20185	0700-0700	DP-28		
DOZ PVT E-20255			N. Morton	3	E-20255	0700-0700	DP-28		
W/T PVT E-20007			R. Carvalho	1	E-20007	0700-1900	DP-28		
W/T PVT E-20010			D. Gray	1	E-20010	0700-1900	DP-28		
W/T PVT E-20011			D. Sasser	1	E-20011	0700-1900	DP-28		
W/T PVT E-20012			R. Alvarez	1	E-20012	0700-1900	DP-28		
W/T PVT E-20013			E. Molina	2	E-20013	0700-0700	DP-28		
W/T PVT E-20152			K. Lawless	1	E-20152	0700-1900	DP-28		
W/T PVT E-20169			R. Zeb	2	E-20169	0700-0700	DP-28		
W/T PVT E-20172			M. Kempf	2	E-20172	0700-0700	DP-28		
W/T PVT E-20174			J. Buchanan	2	E-20174	0700-0700	DP-28		
MAS PVT E-20837			C. Goltermann	2	E-20837	0700-1900	DP-28		
FALM PVT O-20140		9/4		2	O-20140	0700-1900	DP-28		
FALM PVT O-20142				2	O-20142	0700-1900	DP-28		
6. Work Assignments:									
Mop up 100' in from control lines.									
Pull hose lays and back haul trash.									
Tactical patrol.									
7. Special Instructions:									
REAF A. Brown / A. Bonskowski									
ALS AMB 4									
8. Communications									
Name	Ch	Function	Rx Freq	Rx Tone	Tx Freq	Tx Tone	Notes		
COMMAND: Please refer to Communications Plan.									
VTAC11	8	TACTICAL	151.1375N	156.7	151.1375N	156.7			
A/G TAC	14	AIR TO GROUND	164.1375N		164.1375N				
CALCORD	15	MEDICAL	156.0750N	156.7	156.0750N	156.7	MEDICAL COORDINATION		
GUARD 3	16	EMERGENCY	168.6250N		168.6250N	110.9	EMERGENCY USE ONLY		
9. Prepared by: Name:		M. Thomas		RESL		24 Hr Shift:		9	
		Signature: 				12 Hr Shift:		49	
ICS 204		Date/Time: 9/2/2021 2200				Total:		64	

ASSIGNMENT LIST (ICS 204 WF)

CONTROLLED UNCLASSIFIED
INFORMATION//BASIC

1. Incident Name:	2. Operational Period:	3. Branch	Division
Caldor Incident - West Zone	Date From: 09/03/21 Date To: 09/04/21 Time From: 0700 Time To: 0700	X	F / G
4. Operations Personnel:		Page 1 of 1	

Operations Section Chief: E. Schwab / B. Monday	Night Ops: T. Ernst
Branch Director: M. Martinez	Branch Safety: G. Illingworth (T) / D. Perez (12)
Division/Group Supervisor: C. Allen (T) / D. Winnacker (T)	Air Attack: F. Abril (T)

5. Resources Assigned:	** Resources Below in Bold are 12 Hour **							
Resource Identifier	ALS	LWD	Leader	Personnel	Request #	Hours	Reporting Location	
STC XCZ 2326C	YES		J. McNeil	22	E-20039	0700-0700	DP-7	
STC AEU 9271C			N. Pimlott	20	E-20668	0700-0700	DP-7	
ENG SHF 631			J. Binns	3	E-317	0700-1900	DP-7	
ENG ASF 372		9/8	R. Greasewood	6	E-339	0700-1900	DP-7	
ENG SHF 322		9/6	M. Puckett	5	E-356	0700-1900	DP-7	
ENG BNP 74		9/6	W. Breakfield	5	E-372	0700-1900	DP-7	
ENG PVT E-273		9/6	J. Scaroni	3	E-273	0700-1900	DP-7	
CRW MNF SAIPAN 36		9/7	B. Boatman	21	C-45	0700-1900	DP-7	
CRW PVT C-41		9/8	J. Szabo	20	C-41	0700-1900	DP-7	
CRW PVT C-42			J. Miracle	20	C-42	0700-1900	DP-7	
DOZ PVT E-260		9/6	M. Davis	2	E-260	0700-0700	DP-7	
W/T PVT E-20678			S. Dooling	2	E-20678	0700-0700	DP-7	
W/T PVT E-20680			D. Ginn	1	E-20680	0700-1900	DP-7	


6. Work Assignments:
 Construct control lines as direct as possible.
 Insert progressive hose lays.
 Improve and hold established control lines.

7. Special Instructions:

 REMS 18 (12) / ALS AMB 2 / FEMP M. McCarthy (12)

8. Communications

Name	Ch	Function	Rx Freq	Rx Tone	Tx Freq	Tx Tone	Notes
COMMAND: Please refer to Communications Plan.							
VTAC13	9	TACTICAL	158.7375N	156.7	158.7375N	156.7	
A/G TAC	14	AIR TO GROUND	164.1375N		164.1375N		
CALCORD	15	MEDICAL	156.0750N	156.7	156.0750N	156.7	MEDICAL COORDINATION
GUARD 3	16	EMERGENCY	168.6250N		168.6250N	110.9	EMERGENCY USE ONLY

9. Prepared by: Name: M. Thomas RESL 24 Hr Shift: 24
 Signature:  12 Hr Shift: 84
 ICS 204 Date/Time: 9/2/2021 2200 Total: 130

ASSIGNMENT LIST (ICS 204 WF)

CONTROLLED UNCLASSIFIED
INFORMATION//BASIC

1. Incident Name:	2. Operational Period:	3. Branch	Division
Caldor Incident - West Zone	Date From: 09/03/21 Date To: 09/04/21 Time From: 0700 Time To: 0700	X	H
4. Operations Personnel:		Page 1 of 1	Hotel

Operations Section Chief: E. Schwab / B. Monday	Night Ops: T. Ernst
Branch Director: M. Martinez	Branch Safety: G. Illingworth (T) / D. Perez (12)
Division/Group Supervisor: M. Brown	Air Attack: F. Abril (T)

5. Resources Assigned:		** Resources Below in Bold are 12 Hour **					
Resource Identifier	ALS	LWD	Leader	Personnel	Request #	Hours	Reporting Location
T/F OES 5808			T. Semonious	18	E-20064	0700-0700	DP-21
T/F XSM 2278	X	9/10	B. Marra	22	E-20198	0700-0700	DP-21
ENG PVT E-249			G. Palmer	3	E-249	0700-1900	DP-21
ENG PVT E-288		9/3	C. Debree	3	E-288	0700-1900	DP-21
ENG PVT E-289		9/9	T. England	3	E-289	0700-1900	DP-21
ENG PVT E-295		9/9	L. Wallace	3	E-295	0700-1900	DP-21
ENG PVT E-376		9/9	C. Cudero	3	E-376	0700-1900	DP-21
ENG PVT E-385		9/8	J. Navarro	3	E-385	0700-1900	DP-21
STG HUU 9126G			G. Tennyson	34	C-20029	0700-0700	DP-21
W/T PVT E-20347			B. Fetzer	1	E-20347	0700-1900	DP-21
W/T PVT E-20567		9/6	S. Fourbay	2	E-20567	0700-0700	DP-21
TFLD LEWIS			R. Lewis	1	O-20432	0700-0700	DP-21
TFLD GOYETTE			M. Goyette	1	O-20663	0700-0700	DP-21

6. Work Assignments:
 Construct control lines as direct as possible.
 Insert progressive hose lays.
 Improve and hold established control lines.

7. Special Instructions:

 REMS 18 (12) / ALS AMB 2 / FEMP M. McCarthy (12)

8. Communications							
Name	Ch	Function	Rx Freq	Rx Tone	Tx Freq	Tx Tone	Notes
COMMAND: Please refer to Communications Plan.							
CDF T26	10	TACTICAL	159.2925N	192.8	159.2925N	192.8	
A/G TAC	14	AIR TO GROUND	164.1375N		164.1375N		
CALCORD	15	MEDICAL	156.0750N	156.7	156.0750N	156.7	MEDICAL COORDINATION
GUARD 3	16	EMERGENCY	168.6250N		168.6250N	110.9	EMERGENCY USE ONLY

9. Prepared by: Name:	M. Thomas	RESL	24 Hr Shift: 56
	Signature:		12 Hr Shift: 19
ICS 204	Date/Time: 9/2/2021 2200		Total: 97

ASSIGNMENT LIST (ICS 204 WF)

CONTROLLED UNCLASSIFIED
INFORMATION//BASIC

1. Incident Name:	2. Operational Period:	3. Branch	Division
Caldor Incident - West Zone	Date From: 09/03/21 Date To: 09/04/21 Time From: 0700 Time To: 0700	X	I
4. Operations Personnel:		Page 1 of 4	India

Operations Section Chief: E. Schwab / B. Monday	Night Ops: T. Ernst
Branch Director: M. Martinez	Branch Safety: G. Illingworth (T) / D. Perez (12)
Division/Group Supervisor: C. Pereria (12) / J. Spindler (T)	Air Attack: F. Abril (T)

5. Resources Assigned:	** Resources Below in Bold are 12 Hour **							
Resource Identifier	ALS	LWD	Leader	Personnel	Request #	Hours	Reporting Location	
STC MEU 9113C			N. Deurloo	17	E-20865	0700-0700	DP-21	
STC SCU 9160C			C Collins	16	E-20545	0700-0700	DP-21	
STC TCU 9440C			M. Torres	17	E-20816	0700-0700	DP-21	
STF MVU 9336F			A. Knight	12	E-20501	0700-0700	DP-21	
T/F XST 4204			B. Doolan	16	E-21208	0700-0700	DP-21	
T/F XMN 6175			R. Nalder	18	E-21213	0700-0700	DP-21	
T/F CALDOR 9 (3,4,4,6,6)	X	9/9	P. Sten Cada	16	E-9244	0700-1900	DP-21	
ENG UAF 302		9/7	W. Deleo	6	E-315	0700-1900	DP-21	
ENG HOA 6562			F. Kykotsmovi	3	E-341	0700-1900	DP-21	
ENG RGF 671		9/13	K. Giardina	5	E-459	0700-1900	DP-21	
ENG EKD 1347		9/8	B. Jones	4	E-557	0700-1900	DP-21	
ENG LCD 3605		9/5	M. Munoz	5	E-20362	0700-1900	DP-21	
ENG SLR 6257		9/3	W. Hall	4	E-20365	0700-1900	DP-21	
ENG PVT E-21119		9/1	S. Colbry	3	E-21119	0700-1900	DP-21	
ENG PVT E-21120		9/6	N. Ophaug	3	E-21120	0700-1900	DP-21	
ENG PVT E-20473		9/8	J. Winfree	3	E-20473	0700-1900	DP-21	
ENG PVT E-20650		9/9	H. Stoker	3	E-20650	0700-1900	DP-21	
STG NEU 9234G (CCC)			M. Kidwell	31	C-20012	0700-0700	DP-21	

6. Work Assignments:
 Construct control lines as direct as possible.
 Insert progressive hose lays.
 Improve and hold established control lines.

7. Special Instructions:
 REAF P. Foulk / M. Santura

 REMS 18 (12) / ALS AMB 2 / FEMP M. McCarthy (12)

8. Communications							
Name	Ch	Function	Rx Freq	Rx Tone	Tx Freq	Tx Tone	Notes
COMMAND: Please refer to Communications Plan.							
CDF T27	11	TACTICAL	159.3075N	192.8	159.3075N	192.8	
A/G TAC	14	AIR TO GROUND	164.1375N		164.1375N		
CALCORD	15	MEDICAL	156.0750N	156.7	156.0750N	156.7	MEDICAL COORDINATION
GUARD 3	16	EMERGENCY	168.6250N		168.6250N	110.9	EMERGENCY USE ONLY

9. Prepared by: Name:	M. Thomas	RESL	24 Hr Shift: 127
	Signature:		12 Hr Shift: 55
ICS 204	Date/Time: 9/2/2021 2200		Total: 182

ASSIGNMENT LIST (ICS 204 WF)

CONTROLLED UNCLASSIFIED
INFORMATION//BASIC

1. Incident Name:	2. Operational Period:	3. Branch	Division
Caldor Incident - West Zone	Date From: 09/03/21 Date To: 09/04/21 Time From: 0700 Time To: 0700	X	I
4. Operations Personnel:		Page 2 of 4	India

Operations Section Chief: E. Schwab / B. Monday	Night Ops: T. Ernst
Branch Director: M. Martinez	Branch Safety: G. Illingworth (T) / D. Perez (12)
Division/Group Supervisor: C. Pereria (12) / J. Spindler (T)	Air Attack: F. Abril (T)

5. Resources Assigned:	** Resources Below in Bold are 12 Hour **							
Resource Identifier	ALS	LWD	Leader	Personnel	Request #	Hours	Reporting Location	
CRW ENF CRW 25			M. McKurtis	8	O-335	0700-1900	DP-21	
CRW Blue Mountain 5		8/29		20	C-15	0700-1900	DP-21	
CRW PVT C-33		9/7	A. Avila	20	C-33	0700-1900	DP-21	
CRW PVT C-44		9/8	S. Lewis	20	C-44	0700-1900	DP-21	
CRW PVT C-55		9/5	J. Foward	20	C-55	0700-1900	DP-21	
DOZ AEU 2741				2		0700-0700	DP-21	
DOZ AEU 2744			J. Cook	2	E-13	0700-0700	DP-21	
DOZ ENF 3			D. Angenderfer	4	E-200	0700-0700	DP-21	
DOZ PVT E-20910			T. Halter	1	E-20910	0700-1900	DP-21	
DOZ PVT E-264			S. Harvey	1	E-264	0700-1900	DP-21	
DOZ PVT E-548			B. Ferris	2	E-548	0700-1900	DP-21	
DOZ PVT E-20023			D. Spalwn	2	E-20023	0700-0700	DP-21	
DOZ PVT E-20180			E. Roen	3	E-20180	0700-0700	DP-21	
DOZ PVT E-20181			R. Dominikus	1	E-20181	0700-1900	DP-21	
DOZ PVT E-20184			J. Palmer	2	E-20184	0700-1900	DP-21	
DOZ PVT E-20186			D. Cordrey	2	E-20186	0700-0700	DP-21	
DOZ PVT E-20187			M. Hauber	2	E-20187	0700-0700	DP-21	
DOZ PVT E-20908			J. Hall	2	E-20908	0700-0700	DP-21	

6. Work Assignments:
 Construct control lines as direct as possible.
 Insert progressive hose lays.
 Improve and hold established control lines.

7. Special Instructions:
 REAF P. Foulk / M. Santura

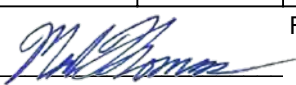
 REMS 18 (12) / ALS AMB 2 / FEMP M. McCarthy (12)

8. Communications							
Name	Ch	Function	Rx Freq	Rx Tone	Tx Freq	Tx Tone	Notes
COMMAND: Please refer to Communications Plan.							
CDF T27	11	TACTICAL	159.3075N	192.8	159.3075N	192.8	
A/G TAC	14	AIR TO GROUND	164.1375N		164.1375N		
CALCORD	15	MEDICAL	156.0750N	156.7	156.0750N	156.7	MEDICAL COORDINATION
GUARD 3	16	EMERGENCY	168.6250N		168.6250N	110.9	EMERGENCY USE ONLY

9. Prepared by: Name:	M. Thomas	RESL	24 Hr Shift: 12
	Signature:		12 Hr Shift: 95
ICS 204	Date/Time: 9/2/2021 2200		Total: 114


ASSIGNMENT LIST (ICS 204 WF)

CONTROLLED UNCLASSIFIED
INFORMATION//BASIC

1. Incident Name: Caldor Incident - West Zone		2. Operational Period: Date From: 09/03/21 Date To: 09/04/21 Time From: 0700 Time To: 0700				3. Branch X		Division I	
4. Operations Personnel:						Page 3 of 4		India	
Operations Section Chief: E. Schwab / B. Monday				Night Ops: T. Ernst					
Branch Director: M. Martinez				Branch Safety: G. Illingworth (T) / D. Perez (12)					
Division/Group Supervisor: C. Pereria (12) / J. Spindler (T)				Air Attack: F. Abril (T)					
5. Resources Assigned:		** Resources Below in Bold are 12 Hour **							
Resource Identifier	ALS	LWD	Leader	Personnel	Request #	Hours	Reporting Location		
W/T PVT E-20003			B. Bedell	2	E-20003	0700-0700	DP-21		
W/T PVT E-20020			T. Astasopoulos	1	E-20020	0700-1900	DP-21		
W/T PVT E-20171			P. Mailloux	1	E-20171	0700-1900	DP-21		
W/T PVT E-20175			G. Bartlett	2	E-20175	0700-0700	DP-21		
W/T PVT E-20273			J. Vaine	1	E-20273	0700-1900	DP-21		
W/T PVT E-20274		9/4	D. Escoffier	1	E-20274	0700-1900	DP-21		
W/T PVT E-20276			R. Straley	1	E-20276	0700-1900	DP-21		
W/T PVT E-20282			M. Wood	2	E-20282	0700-0700	DP-21		
W/T PVT E-20284		9/4	M. Vazzana	1	E-20284	0700-1900	DP-21		
W/T PVT E-20285			L. Jones	1	E-20285	0700-1900	DP-21		
W/T PVT E-20302			R. Leaverton	2	E-20302	0700-0700	DP-21		
W/T PVT E-20564		9/6	A. D'angelo	2	E-20564	0700-0700	DP-21		
MAS PVT E-20833							DP-21		
FELB PVT E-20488			G. Gladen	1	E-20488	0700-1900	DP-21		
HEQB-T HARNOS			T. Harnos	1	O-217	0700-1900	DP-21		
HEQB WYMAN			K. Wyman	1	O-221	0700-1900	DP-21		
HEQB BASSO			B. Basso	1	O-20528	0700-0700	DP-21		
6. Work Assignments:									
Construct control lines as direct as possible.									
Insert progressive hose lays.									
Improve and hold established control lines.									
7. Special Instructions:									
REAF P. Foulk / M. Santura									
REMS 18 (12) / ALS AMB 2 / FEMP M. McCarthy (12)									
8. Communications									
Name	Ch	Function	Rx Freq	Rx Tone	Tx Freq	Tx Tone	Notes		
COMMAND: Please refer to Communications Plan.									
CDF T27	11	TACTICAL	159.3075N	192.8	159.3075N	192.8			
A/G TAC	14	AIR TO GROUND	164.1375N		164.1375N				
CALCORD	15	MEDICAL	156.0750N	156.7	156.0750N	156.7	MEDICAL COORDINATION		
GUARD 3	16	EMERGENCY	168.6250N		168.6250N	110.9	EMERGENCY USE ONLY		
9. Prepared by: Name:		M. Thomas		RESL		24 Hr Shift:		9	
		Signature: 				12 Hr Shift:		9	
ICS 204		Date/Time: 9/2/2021 2200				Total:		21	

ASSIGNMENT LIST (ICS 204 WF)

CONTROLLED UNCLASSIFIED
INFORMATION//BASIC

1. Incident Name:		2. Operational Period:				3. Branch		Division	
Caldor Incident - West Zone		Date From: 09/03/21		Date To: 09/04/21		X		Contingency	
		Time From: 0700		Time To: 0700		Page 1 of 2			
4. Operations Personnel:									
Operations Section Chief: E. Schwab / B. Monday					Night Ops: T. Ernst				
Branch Director: M. Martinez					Branch Safety: G. Illingworth (T) / D. Perez (12)				
Division/Group Supervisor: B. Porrazzo / M. Khazaal (T)					Air Attack: F. Abril (T)				
5. Resources Assigned:									
** Resources Below in Bold are 12 Hour **									
Resource Identifier	ALS	LWD	Leader	Personnel	Request #	Hours	Reporting Location		
ENG TIA 696		8/29	D. Stordy	4	E-35	0700-1900	DP-7		
ENG MTSWS T6			D. Geissal	2	E-269	0700-1900	DP-7		
ENG BNP 675		9/5	A. Oggenkamp	3	E-281	0700-1900	DP-7		
ENG OKS 96		9/3	D. Morris	2	E-20091	0700-1900	DP-7		
ENG NSS B5361		9/2	J. Gonzalez	4	E-20168	0700-1900	DP-7		
ENG PVT E-425			A. Wildgun	3	E-425	0700-1900	DP-7		
CRW PVT C-72			R. Castro	20	C-72	0700-1900	DP-7		
DOZ PVT E-30		9/3	T. Huckaby	2	E-30	0700-1900	DP-7		
DOZ PVT E-259		9/13	R. Wyman	1	E-259	0700-1900	DP-7		
DOZ PVT E-261		9/7	L. Herbst	2	E-261	0700-1900	DP-7		
DOZ PVT E-20257			B. Hendrix	3	E-20257	0700-0700	DP-7		
DOZ PVT E-20258			T. Wanzer	2	E-20258	0700-0700	DP-7		
DOZ PVT E-20259			G. Bartglet	2	E-20259	0700-0700	DP-7		
DOZ PVT E-20260			E. Herl	2	E-20260	0700-0700	DP-7		
DOZ PVT E-20531			C. Enriques	2	E-20531	0700-0700	DP-7		
DOZ PVT E-20533			S. Hill	2	E-20533	0700-0700	DP-7		
DOZ PVT E-20536			J. Cameron	2	E-20536	0700-1900	DP-7		
DOZ PVT E-20540			K. Van Pelt	3	E-20540	0700-0700	DP-7		
6. Work Assignments:									
Construct control lines as direct as possible.									
Insert progressive hose lays.									
Improve and hold established control lines.									
7. Special Instructions:									
REMS 18 (12) / ALS AMB 2 / FEMP M. McCarthy (12)									
8. Communications									
Name	Ch	Function	Rx Freq	Rx Tone	Tx Freq	Tx Tone	Notes		
COMMAND: Please refer to Communications Plan.									
A/G TAC	14	AIR TO GROUND	164.1375N		164.1375N				
CALCORD	15	MEDICAL	156.0750N	156.7	156.0750N	156.7	MEDICAL COORDINATION		
GUARD 3	16	EMERGENCY	168.6250N		168.6250N	110.9	EMERGENCY USE ONLY		
9. Prepared by: Name:									
M. Thomas					RESL		24 Hr Shift: 16		
Signature: 							12 Hr Shift: 39		
ICS 204									
					Date/Time: 9/2/2021 2200		Total: 61		

ASSIGNMENT LIST (ICS 204 WF)

CONTROLLED UNCLASSIFIED
INFORMATION//BASIC

1. Incident Name: Caldor Incident - West Zone	2. Operational Period: Date From: 09/03/21 Date To: 09/04/21 Time From: 0700 Time To: 0700	3. Branch Division X Contingency
4. Operations Personnel:		Page 2 of 2

Operations Section Chief: E. Schwab / B. Monday	Night Ops: T. Ernst
Branch Director: M. Martinez	Branch Safety: G. Illingworth (T) / D. Perez (12)
Division/Group Supervisor: B. Porrazzo / M. Khazaal (T)	Air Attack: F. Abril (T)

5. Resources Assigned:		** Resources Below in Bold are 12 Hour **						
Resource Identifier	ALS	LWD	Leader	Personnel	Request #	Hours	Reporting Location	
DOZ PVT E-20636			T. Stevenson	2	E-20636	0700-0700	DP-7	
DOZ PVT E-20637			B. Nettles	3	E-20637	0700-0700	DP-7	
DOZ PVT E-20703			J. Ford	2	E-20703	0700-0700	DP-7	
DOZ PVT E-20909			J. Trappe	2	E-20909	0700-0700	DP-7	
DOZ PVT E-20911			D. George	1	E-20911	0700-1900	DP-7	
MAST PVT E-241			C. Johnson	2	E-241	0700-1900	DP-7	
MAST PVT E-20027			A. Dinatale	1	E-20027	0700-1900	DP-7	
MAST PVT E-20749			S. Turner	1	E-20749	0700-1900	DP-7	
MAST PVT E-20754			H. Meyer	1	E-20754	0700-1900	DP-7	
MAST PVT E-20755			R. Galgiani	1	E-20755	0700-1900	DP-7	
MAST PVT E-20835			C. Elderd	1	E-20835	0700-1900	DP-7	
CHIP PVT E-20612			D. Mills	2	E-20612	0700-1900	DP-7	
SKDGN PVT E-63			C. Haugen	1	E-63	0700-1900	DP-7	
SKDGN PVT E-245			R. Leflar	2	E-245	0700-1900	DP-7	
TFLD KLEMEK			S. Klemek	1	O-20468	0700-1900	DP-7	
TFLD-T HASSLINGER			J. Hasslinger	1	O-20467	0700-1900	DP-7	


6. Work Assignments:
 Construct control lines as direct as possible.
 Insert progressive hose lays.
 Improve and hold established control lines.

7. Special Instructions:

 REMS 18 (12) / ALS AMB 2 / FEMP M. McCarthy (12)

8. Communications

Name	Ch	Function	Rx Freq	Rx Tone	Tx Freq	Tx Tone	Notes
COMMAND: Please refer to Communications Plan.							
A/G TAC	14	AIR TO GROUND	164.1375N		164.1375N		
CALCORD	15	MEDICAL	156.0750N	156.7	156.0750N	156.7	MEDICAL COORDINATION
GUARD 3	16	EMERGENCY	168.6250N		168.6250N	110.9	EMERGENCY USE ONLY

9. Prepared by: Name: M. Thomas RESL 24 Hr Shift: 9
 Signature:  12 Hr Shift: 14
ICS 204 Date/Time: 9/2/2021 2200 Total: 24

ASSIGNMENT LIST (ICS 204 WF)

CONTROLLED UNCLASSIFIED
INFORMATION//BASIC

1. Incident Name:	2. Operational Period:	3. Branch	Division
Caldor Incident - West Zone	Date From: 09/03/21 Date To: 09/04/21 Time From: 0700 Time To: 0700	XX	N / P
4. Operations Personnel:		Page 1 of 2	

Operations Section Chief: E. Schwab / B. Monday	Night Ops: T. Ernst
Branch Director: T. Richter / D. Bakken (T)	Branch Safety: M. Cobb / G. Maloon (T)
Division/Group Supervisor: B. Muenzer / W. Almand (12)	Air Attack: F. Abril (T)

5. Resources Assigned:	** Resources Below in Bold are 12 Hour **							
Resource Identifier	ALS	LWD	Leader	Personnel	Request #	Hours	Reporting Location	
STC CZU 9170C			E. Bither	17	E-20548	0700-0700	DP-16	
STC MEU 9117C			A. Leonard	22	E-20812	0700-0700	DP-16	
STC OES 1870C			D. Robertson	22	E-20201	0700-0700	DP-16	
STG AEU 9277G (CDF)			T. Silva	23	C-4	0700-0700	DP-16	
STG AEU 9273G (CDCR)			A. Cholico	30	C-20003	0700-0700	DP-16	
STG AEU 9275G (CDCR)			D. Grandbois	33	C-20015	0700-0700	DP-16	
STG HEU 9122G (CDCR)			B. Murphey	33	C-20027	0700-0700	DP-16	
CRW HUU EEL RIVER 3			B. Glakhone	15	C-20096	0700-0700	DP-16	
CRW PVT C-54		9/5	A. Hergert	20	C-54	0700-1900	DP-16	
DOZ PVT E-46			M. Emerson	4	E-46	0700-0700	DP-16	
DOZ PVT E-20179			J. Snyder	3	E-20179	0700-0700	DP-16	
DOZ PVT E-20182			A. Miller	3	E-20182	0700-0700	DP-16	
DOZ PVT E-20264		9/4	D. Kirby	2	E-20264	0700-0700	DP-16	
DOZ PVT E-20534			A. Bushey	2	E-20534	0700-0700	DP-16	
DOZ PVT E-20539			C. Klauer	3	E-20539	0700-0700	DP-16	
DOZ PVT E-20638			N. Schmidt	3	E-20638	0700-0700	DP-16	
W/T PVT E-388			J. Richardson	1	E-388	0700-1900	DP-16	
W/T PVT E-20153			M. Greer	1	E-20153	0700-1900	DP-16	

6. Work Assignments:
 Construct control lines as direct as possible.
 Insert progressive hose lays.
 Improve and hold established control lines.

7. Special Instructions:
 REAF J. Mabe / P. Yerger / C. Hutcheson

 ALS AMB 60 / FEMP E. Ferreria / FEMP Beveridge

8. Communications							
Name	Ch	Function	Rx Freq	Rx Tone	Tx Freq	Tx Tone	Notes
COMMAND: Please refer to Communications Plan.							
CDF T28	8	TACTICAL	151.1825N	192.8	151.1825N	192.8	
A/G TAC	14	AIR TO GROUND	164.1375N		164.1375N		
CALCORD	15	MEDICAL	156.0750N	156.7	156.0750N	156.7	MEDICAL COORDINATION
GUARD 3	16	EMERGENCY	168.6250N		168.6250N	110.9	EMERGENCY USE ONLY

9. Prepared by: Name:	M. Thomas	RESL	
Signature:			
ICS 204	Date/Time: 9/2/2021 2200		
			24 Hr Shift: 187 12 Hr Shift: 22 Total: 237

ASSIGNMENT LIST (ICS 204 WF)

CONTROLLED UNCLASSIFIED
INFORMATION//BASIC

1. Incident Name:	2. Operational Period:	3. Branch	Division
Caldor Incident - West Zone	Date From: 09/03/21 Date To: 09/04/21 Time From: 0700 Time To: 0700	XX	N / P
4. Operations Personnel:		Page 2 of 2	

Operations Section Chief: E. Schwab / B. Monday	Night Ops: T. Ernst
Branch Director: T. Richter / D. Bakken (T)	Branch Safety: M. Cobb / G. Maloon (T)
Division/Group Supervisor: B. Muenzer / W. Almand (12)	Air Attack: F. Abril (T)


5. Resources Assigned:		** Resources Below in Bold are 12 Hour **					
Resource Identifier	ALS	LWD	Leader	Personnel	Request #	Hours	Reporting Location
W/T PVT E-20178			K. Gray	1	E-20178	0700-1900	DP-16
W/T PVT E-20277			D. Castle	1	E-20277	0700-1900	DP-16
W/T PVT E-20324			R. Gold	2	E-20324	0700-0700	DP-16
W/T PVT E-20705			C. Gomes	1	E-20705	0700-1900	DP-16
MAST PVT E-58			C. Findleton	1	E-58	0700-1900	DP-16
MAST PVT E-232			D. West	2	E-232	0700-1900	DP-16
FELB PVT E-54			R. Fithen	2	E-54	0700-1900	DP-16
FELB PVT E-56			D. Flanagan	2	E-56	0700-1900	DP-16
CHIP PVT E-20611			M. Nieves	2	E-20611	0700-1900	DP-16
HEQB MACUMBER			T. Macumber	1		0700-0700	DP-16
FALM PVT O-20484			J. Moglia	2	O-20484	0700-1900	DP-16

6. Work Assignments:
 Construct control lines as direct as possible.
 Insert progressive hose lays.
 Improve and hold established control lines.

7. Special Instructions:
 REAF J. Mabe / P. Yerger / C. Hutcheson

 ALS AMB 60 / FEMP E. Ferreria / FEMP Beveridge

8. Communications							
Name	Ch	Function	Rx Freq	Rx Tone	Tx Freq	Tx Tone	Notes
COMMAND: Please refer to Communications Plan.							
CDF T28	8	TACTICAL	151.1825N	192.8	151.1825N	192.8	
A/G TAC	14	AIR TO GROUND	164.1375N		164.1375N		
CALCORD	15	MEDICAL	156.0750N	156.7	156.0750N	156.7	MEDICAL COORDINATION
GUARD 3	16	EMERGENCY	168.6250N		168.6250N	110.9	EMERGENCY USE ONLY

9. Prepared by: Name: M. Thomas RESL 24 Hr Shift: 3
 Signature:  12 Hr Shift: 14
 ICS 204 Date/Time: 9/2/2021 2200 Total: 17

ASSIGNMENT LIST (ICS 204 WF)

CONTROLLED UNCLASSIFIED
INFORMATION//BASIC

1. Incident Name: Caldor Incident - West Zone	2. Operational Period: Date From: 09/03/21 Date To: 09/04/21 Time From: 0700 Time To: 0700	3. Branch Division XXX R / T / U / W
4. Operations Personnel:		Page 1 of 1

Operations Section Chief: E. Schwab / B. Monday	Night Ops: T. Ernst
Branch Director:	Branch Safety: J. Bensley
Division/Group Supervisor: F. Burrows (T) (12)	Air Attack: F. Abril (T)

5. Resources Assigned:		** Resources Below in Bold are 12 Hour **					
Resource Identifier	ALS	LWD	Leader	Personnel	Request #	Hours	Reporting Location
ENG MEU 1173			J. Dupont	4	E-20402	0700-0700	DP-20
ENG HUU 1275			J. Tavalero	4	E-20403	0700-0700	DP-20
ENG HUU 1263			D. Mathiesen	3	E-20404	0700-0700	DP-20
ENG SSL 21			M. Crabtree	3	E-20779	0700-0700	DP-20
ENG LKR 8531		9/5	K. Bonham	5	E-282	0700-1900	DP-20
ENG PVT E-455			B. Cooper	3	E-455	0700-1900	DP-20
ENG PVT E-456			R. Walczyk	2	E-456	0700-1900	DP-20
ENG PVT E-462			B. Vigger	3	E-462	0700-1900	DP-20
CRW CZU MBY1 (CCC)			R. Switzer	16	C-20097	0700-0700	DP-20
CRW PVT C-57		9/5	C. Fox	20	C-57	0700-1900	DP-20
DOZ PVT E-32			G. Mobley	2	E-32	0700-1900	DP-20
W/T PVT E-20005			D. Rempel	1	E-20005	0700-1900	DP-20
W/T PVT E-20707			S. Randleas	1	E-20707	0700-1900	DP-20
FALM PVT O-20481			J. Vincent	2	O-20481	0700-1900	DP-20

6. Work Assignments:
 Construct control lines as direct as possible.
 Improve and hold established control lines.
 Insert progressive hose lays.

7. Special Instructions:
 REAF A. Brown / A. Bonskowski

 BLS AMB 572

8. Communications							
Name	Ch	Function	Rx Freq	Rx Tone	Tx Freq	Tx Tone	Notes
COMMAND: Please refer to Communications Plan.							
CDF T30	10	TACTICAL	151.3925N	192.8	151.3925N	192.8	
A/G TAC	14	AIR TO GROUND	164.1375N		164.1375N		
CALCORD	15	MEDICAL	156.0750N	156.7	156.0750N	156.7	MEDICAL COORDINATION
GUARD 3	16	EMERGENCY	168.6250N		168.6250N	110.9	EMERGENCY USE ONLY

9. Prepared by: Name:	M. Thomas	RESL	24 Hr Shift: 30
	Signature:		12 Hr Shift: 36
ICS 204	Date/Time: 9/2/2021 2200		Total: 69

Division/Group Assignment List (ICS 204 WF)
Controlled Unclassified Information//Basic

EAST ZONE

1. Incident Name:				3.		
CALDOR INCIDENT EAST ZONE				Branch: XII	Division/Group AA	
2. Operational Period:						
Date/Time From: 09/03/2021 0700 FRI		Date/Time To: 09/04/2021 0700 SAT				
4. Operations Personnel						
OPERATIONS CHIEF		KYLE JACOBSON, BRIAN NEWMAN JOE GONZALES (T)		BRANCH DIRECTOR		PAT LAENG
DIVISION/GROUP SUPERVISOR		S. LONG K.PERREAULT (T)		AIR ATTACK SUPERVISOR		
5. Resources Assigned this Period						
Strike Team / Task Force / Resource Designator	LWD	Leader	Number Persons	Drop Off PT./Time	Pick Up PT./Time	
**HCS1 S/T 9313G C-20014	09/07	R. KIRBY	35	HEAVENLY SKI RESORT/0700	HEAVENLY SKI RESORT/0700	
HC2I TANANA CHIEFS C-104		H. WILLIAMS		HEAVENLY SKI RESORT/0700	HEAVENLY SKI RESORT/1900	
HC2I WHITE MOUNTAIN C-107				HEAVENLY SKI RESORT/0700	HEAVENLY SKI RESORT/1900	
HC2 WEST COAST REFORESTATION C-58	09/05	L. TORRESS	20	HEAVENLY SKI RESORT/0700	HEAVENLY SKI RESORT/1900	
HC2 FIRESTORM 6 C-108	09/15	G. LOPEZ	20	HEAVENLY SKI RESORT/0700	HEAVENLY SKI RESORT/1900	
HC2 FRANCO REFORESTATION C-110	09/15	MARTINEZ-ALVARADO	20	HEAVENLY SKI RESORT/0700	HEAVENLY SKI RESORT/1900	
SMOD NO - CREW 26 O-4				HEAVENLY SKI RESORT/0700	HEAVENLY SKI RESORT/1900	
SMOD CREW 25 O-335		M. MCKURTIS	8	HEAVENLY SKI RESORT/0700	HEAVENLY SKI RESORT/1900	
**ES3 S/T XTB 4233C E-20206	09/07	S. WILLIAMS	19	HEAVENLY SKI RESORT/0700	HEAVENLY SKI RESORT/0700	
**ES3 S/T CZU 9171C E-20196		R. SIMMONS	16	HEAVENLY SKI RESORT/0700	HEAVENLY SKI RESORT/0700	
T/F NV-WID NEVADA E-396	09/11	S. TORRES	23	HEAVENLY SKI RESORT/0700	HEAVENLY SKI RESORT/1900	
T/F CALDOR 5 E-9249	09/09	M. GAHLEY	16	HEAVENLY SKI RESORT/0700	HEAVENLY SKI RESORT/1900	
ENG3 CO-CARBONDALE 84 E-377	09/10	K. OLIVER	3	HEAVENLY SKI RESORT/0700	HEAVENLY SKI RESORT/1900	
ENG3 AZ-PNF 931 E-378	09/09	M. WILLIAMS	7	HEAVENLY SKI RESORT/0700	HEAVENLY SKI RESORT/1900	
ENG3 HART VENTURES E-291	09/16	R. ANDERSON	3	HEAVENLY SKI RESORT/0700	HEAVENLY SKI RESORT/1900	
ENG4 HART E-408	09/11	A. MARTIN	3	HEAVENLY SKI RESORT/0700	HEAVENLY SKI RESORT/1900	
ENG6 MT-FRENCHTOWN 816 E-269	09/05	D. GEISSAL	2	HEAVENLY SKI RESORT/0700	HEAVENLY SKI RESORT/1900	
8. Division/Group Communication Summary						
Function	Channel	RX Frequency N/W	RX Tone/NAC	TX Frequency N/W	TX Tone/NAC	Mode
COMMAND	CMD 93	166.6875N	146.2	162.9375N	146.2	A
TACTICAL	NIFC T1	168.0500N		168.0500N		A
AIR TO GROUND	A/G CMD	167.9500N		167.9500N		
AIR TO GROUND	A/G TAC E	169.2875N		169.2875N		A
AIR TO GROUND	CALCORD	156.0750N	156.7	156.0750N	156.7	A
AIR GUARD	EMERGENCY	168.6250N		168.6250N	110.9	A
9. Prepared By (Resource Unit Leader)		Approved By (Planning Section Chief)			Date	Time
DWAYNE PRESTON (T)		JOE SCURI			09/02/2021	2200

Division/Group Assignment List (ICS 204 WF)
Controlled Unclassified Information//Basic

EAST ZONE

1. Incident Name:				3.		
CALDOR INCIDENT EAST ZONE				Branch: XII	Division/Group AA	
2. Operational Period:						
Date/Time From: 09/03/2021 0700 FRI		Date/Time To: 09/04/2021 0700 SAT				
4. Operations Personnel						
OPERATIONS CHIEF		KYLE JACOBSON, BRIAN NEWMAN JOE GONZALES (T)		BRANCH DIRECTOR		PAT LAENG
DIVISION/GROUP SUPERVISOR		S. LONG K.PERREAULT (T)		AIR ATTACK SUPERVISOR		
5. Resources Assigned this Period						
Strike Team / Task Force / Resource Designator	LWD	Leader	Number Persons	Drop Off PT./Time	Pick Up PT./Time	
ENG6 ID-CTF 641 E-270	09/05	E. HORN	4	HEAVENLY SKI RESORT/0700	HEAVENLY SKI RESORT/1900	
ENG6 CO-RIDGEWAY 1211 E-407	09/10	S. MENZ	3	HEAVENLY SKI RESORT/0700	HEAVENLY SKI RESORT/1900	
ENG6 CO-PLATTE CANYON 2 E-271	09/05	K. CASHMAN	3	HEAVENLY SKI RESORT/0700	HEAVENLY SKI RESORT/1900	
ENG6 CENTRAL WILDFIRE E-21014	09/15	J. WARD	3	HEAVENLY SKI RESORT/0700	HEAVENLY SKI RESORT/1900	
ENG6 ROGUE BASIN E-21122	09/09	J. MATTHEWS	2	HEAVENLY SKI RESORT/0700	HEAVENLY SKI RESORT/1900	
ENG6 TX-TXF 641 E-466	09/13	K. UAL	4	HEAVENLY SKI RESORT/0700	HEAVENLY SKI RESORT/1900	
WTT2 A.C. WATER SVC E-20017	09/19	B. ROSE	1	HEAVENLY SKI RESORT/0700	HEAVENLY SKI RESORT/1900	
WTS1 A & G E-20173	09/18	N. BALDIVIEZ	1	HEAVENLY SKI RESORT/0700	HEAVENLY SKI RESORT/1900	
**WTS2 FIRELINE TRUCKING E-20177	09/18	R. HURL	2	HEAVENLY SKI RESORT/0700	HEAVENLY SKI RESORT/0700	
WTS2 QUALITY CONST E-20008	09/17	P. INDIHOR	1	HEAVENLY SKI RESORT/0700	HEAVENLY SKI RESORT/1900	
WTS2 CGS INCORPORATED E-20280	09/20	J. CORLEY	1	HEAVENLY SKI RESORT/0700	HEAVENLY SKI RESORT/1900	
WTS2 AWB INC E-20009	09/17	R. KEENE	1	HEAVENLY SKI RESORT/0700	HEAVENLY SKI RESORT/1900	
DOZ2 LNU1448 E-20634	09/06	B. MADOLE	2	HEAVENLY SKI RESORT/0700	HEAVENLY SKI RESORT/1900	
**DOZ2 CEDAR STICK E-20636	09/07	T. STEVESON	2	HEAVENLY SKI RESORT/0700	HEAVENLY SKI RESORT/0700	
**DOZ2 JMBS E-20532	09/05	G. PASCOLLA	2	HEAVENLY SKI RESORT/0700	HEAVENLY SKI RESORT/0700	
**DOZ2 J. DEPUE TRUCKING E-20025	09/01	N. EDWARDS	2	HEAVENLY SKI RESORT/0700	HEAVENLY SKI RESORT/0700	
**DOZ2 HERTZIG E-392	09/08	K. BOYD	3	HEAVENLY SKI RESORT/0700	HEAVENLY SKI RESORT/0700	
8. Division/Group Communication Summary						
Function	Channel	RX Frequency N/W	RX Tone/NAC	TX Frequency N/W	TX Tone/NAC	Mode
COMMAND	CMD 93	166.6875N	146.2	162.9375N	146.2	A
TACTICAL	NIFC T1	168.0500N		168.0500N		A
AIR TO GROUND	A/G CMD	167.9500N		167.9500N		
AIR TO GROUND	A/G TAC E	169.2875N		169.2875N		A
AIR TO GROUND	CALCORD	156.0750N	156.7	156.0750N	156.7	A
AIR GUARD	EMERGENCY	168.6250N		168.6250N	110.9	A
9. Prepared By (Resource Unit Leader)		Approved By (Planning Section Chief)		Date	Time	
DWAYNE PRESTON (T)		JOE SCURI		09/02/2021	2200	

Division/Group Assignment List (ICS 204 WF)
Controlled Unclassified Information//Basic

EAST ZONE

1. Incident Name:				3.		
CALDOR INCIDENT EAST ZONE				Branch: XII	Division/Group AA	
2. Operational Period:						
Date/Time From: 09/03/2021 0700 FRI		Date/Time To: 09/04/2021 0700 SAT				
4. Operations Personnel						
OPERATIONS CHIEF		KYLE JACOBSON, BRIAN NEWMAN JOE GONZALES (T)		BRANCH DIRECTOR		PAT LAENG
DIVISION/GROUP SUPERVISOR		S. LONG K.PERREAULT (T)		AIR ATTACK SUPERVISOR		
5. Resources Assigned this Period						
Strike Team / Task Force / Resource Designator	LWD	Leader	Number Persons	Drop Off PT./Time	Pick Up PT./Time	
DOZ3 CAHOON CONST E-264	09/10	S. HARVEY	1	HEAVENLY SKI RESORT/0700	HEAVENLY SKI RESORT/1900	
**DOZ3 SIERRA HARDSCAPE E-20187	09/05	M. HAUBER	2	HEAVENLY SKI RESORT/0700	HEAVENLY SKI RESORT/0700	
MAST HERTZIG E-20694	09/10	D. UDELL	1	HEAVENLY SKI RESORT/0700	HEAVENLY SKI RESORT/1900	
MAST STEVEN HILL TRUCKING E-20389	09/10	S. HILL	1	HEAVENLY SKI RESORT/0700	HEAVENLY SKI RESORT/1900	
MAST BELLA E-20759	09/10	T. GRANAT	2	HEAVENLY SKI RESORT/0700	HEAVENLY SKI RESORT/1900	
FEL1 POSTON E-476	09/12	C. POSTON	2	HEAVENLY SKI RESORT/0700	HEAVENLY SKI RESORT/1900	
HEQB GRAHAM, JACOB O-20019	09/04	J. GRAHAM	1	HEAVENLY SKI RESORT/0700	HEAVENLY SKI RESORT/1900	
HEQB BROWN, CHARLES (T) O-20279	09/04	C. BROWN	1	HEAVENLY SKI RESORT/0700	HEAVENLY SKI RESORT/1900	
FMOD UNDERDOG TIMBER FALLING, INC. O-232	09/07	C. BROWN		HEAVENLY SKI RESORT/0700	HEAVENLY SKI RESORT/1900	
FMOD UNDERDOG TIMBER FALLING, INC. O-20140	09/04			HEAVENLY SKI RESORT/0700	HEAVENLY SKI RESORT/1900	
6. Control Operations/Work Assignments:						
Utilize appropriate suppression methods to keep the fire within its current containment lines while protecting life threats and impacts to infrastructure.						
7. Special Instructions:						
** Denotes 24 HR Shift						
8. Division/Group Communication Summary						
Function	Channel	RX Frequency N/W	RX Tone/NAC	TX Frequency N/W	TX Tone/NAC	Mode
COMMAND	CMD 93	166.6875N	146.2	162.9375N	146.2	A
TACTICAL	NIFC T1	168.0500N		168.0500N		A
AIR TO GROUND	A/G CMD	167.9500N		167.9500N		
AIR TO GROUND	A/G TAC E	169.2875N		169.2875N		A
AIR TO GROUND	CALCORD	156.0750N	156.7	156.0750N	156.7	A
AIR GUARD	EMERGENCY	168.6250N		168.6250N	110.9	A
9. Prepared By (Resource Unit Leader)			Approved By (Planning Section Chief)		Date	Time
DWAYNE PRESTON (T)			JOE SCURI		09/02/2021	2200

Division/Group Assignment List (ICS 204 WF)
Controlled Unclassified Information//Basic

EAST ZONE

1. Incident Name:				3.		
CALDOR INCIDENT EAST ZONE				Branch:		Division/Group
2. Operational Period:				XV		QQ
Date/Time From: 09/03/2021 0700 FRI		Date/Time To: 09/04/2021 0700 SAT				
4. Operations Personnel						
OPERATIONS CHIEF		KYLE JACOBSON / BRIAN NEWMAN JOE GONZALES (T)		BRANCH DIRECTOR		DREW GRAHAM
DIVISION/GROUP SUPERVISOR		MARVIN ROYBAL MATT BROWN		AIR ATTACK SUPERVISOR		
5. Resources Assigned this Period						
Strike Team / Task Force / Resource Designator		LWD	Leader	Number Persons	Drop Off PT./Time	Pick Up PT./Time
HC1 ROOSEVELT IHC C-26		09/04	L. MONEY	20	ICP HEAVENLY SKI RESORT/0700	ICP HEAVENLY SKI RESORT/1900
**ENG3 9171C				16	ICP HEAVENLY SKI RESORT/0700	ICP HEAVENLY SKI RESORT/1900
**T/F5811				16	ICP HEAVENLY SKI RESORT/0700	ICP HEAVENLY SKI RESORT/1900
T/F CALDOR 8 E-9234			N. BRISTOL	22	ICP HEAVENLY SKI RESORT/0700	ICP HEAVENLY SKI RESORT/1900
**ENG3 E2764				4	ICP HEAVENLY SKI RESORT/0700	ICP HEAVENLY SKI RESORT/1900
**ENG3 E2779				4	ICP HEAVENLY SKI RESORT/0700	ICP HEAVENLY SKI RESORT/1900
ENG3 KNF 16 E-360		09/05	J.MORGAN	6	ICP HEAVENLY SKI RESORT/0700	ICP HEAVENLY SKI RESORT/1900
ENG3 TNF 72 E-224		09/03	M. BRADFORD	5	ICP HEAVENLY SKI RESORT/0700	ICP HEAVENLY SKI RESORT/1900
ENG3 SHF 363 E-357		09/05	K.SMYTH	5	ICP HEAVENLY SKI RESORT/0700	ICP HEAVENLY SKI RESORT/1900
ENG3 BERTHOUD 3111 E-405		09/10	DREW GETTEL	4	ICP HEAVENLY SKI RESORT/0700	ICP HEAVENLY SKI RESORT/1900
ENG3 WY-FRX 151 E-453		09/12	B. HUTCHINSONS	4	ICP HEAVENLY SKI RESORT/0700	ICP HEAVENLY SKI RESORT/1900
ENG3 J3 CONTRACTING E-515		09/10	WES WALLACE	3	ICP HEAVENLY SKI RESORT/0700	ICP HEAVENLY SKI RESORT/1900
ENG4 HART VENTURES E-286		09/10	BLACK CROW, S	3	ICP HEAVENLY SKI RESORT/0700	ICP HEAVENLY SKI RESORT/1900
ENG6 SLM 110 E-20826			J. GREY		ICP HEAVENLY SKI RESORT/0700	ICP HEAVENLY SKI RESORT/1900
ENG6 HART VENT 290 E-290		09/10	K. COLTON	3	ICP HEAVENLY SKI RESORT/0700	ICP HEAVENLY SKI RESORT/1900
ENG6 VIGIL E-467		09/12	RYAN VIGIL	3	ICP HEAVENLY SKI RESORT/0700	ICP HEAVENLY SKI RESORT/1900
DO22 NV-STO 74 E-21114		09/12	D. SNYDER	3	ICP HEAVENLY SKI RESORT/0700	ICP HEAVENLY SKI RESORT/1900
8. Division/Group Communication Summary						
Function	Channel	RX Frequency N/W	RX Tone/NAC	TX Frequency N/W	TX Tone/NAC	Mode
COMMAND	CMD 93	166.6875N	146.2	162.9375N	146.2	A
TACTICAL	NIFC T1	168.0500N		168.0500N		A
AIR TO GROUND	A/G CMD	167.9500N		167.9500N		
AIR TO GROUND	A/G TAC E	169.2875N		169.2875N		A
AIR TO GROUND	CALCORD	156.0750N	156.7	156.0750N	156.7	A
AIR GUARD	EMERGENCY	168.6250N		168.6250N	110.9	A
9. Prepared By (Resource Unit Leader)			Approved By (Planning Section Chief)		Date	Time
SCOTT LAZENBY (T)			JOE SCURI		09/02/2021	2200

MEDICAL PLAN (ICS 206)

1. Incident Name: Caldor-West Zone	2. Operational Period:	Date From:	9/3/21	Date To:	9/4/21
		Time From:	700	Time To:	7:00

3. Medical Aid Stations:			
Name	Location	Contact Number/Freq	Physician
CAL MAT	ICP		Yes
MERT	Growlersburg Camp		Yes

4. Transportation (indicate air or ground):			
Ambulance Service	Location	Contact Number	Level of Service
Guard 840 24 Hr (AIR)	Reno-Tahoe INTL Airport (KRNO)	Caldor Comm	ALS
Private Ambulances (GROUND)	All Branches	Caldor Comm	ALS
REMS 18	All Branches	Caldor Comm	ALS

5. Hospitals:							
Hospital Name	Address,	Contact Number(s)/ Frequency	Travel Time		Trauma Center	Burn Center	Helipad
	Lat & Long Helipad		Air	Ground			
Marshal Medical Center	1100 Marshal Way, Placerville	530-622-1441	5 Min	10 Min	Level 3	<input type="checkbox"/>	<input type="checkbox"/>
Sutter Amador Hospital	200 Mission Blvd, Jackson Lat 38° 21.05'N Long 120° 45.85'W	209-223-7500	30 Min	1.5 Hrs	Level 4	<input type="checkbox"/>	<input checked="" type="checkbox"/>
Sutter Roseville	1 Medical Plaza Dr. Roseville Lat 38° 45.97'N Long 121° 14.87' W	916-781-1200	45 Min	3 Hrs	Level 2	<input type="checkbox"/>	<input checked="" type="checkbox"/>
Renown Regional Hospital	1155 Mill St. Reno, NV Lat 39° 31.30'N Long 119° 47.44'W	775-982-2005	45 Min	2 Hrs	Level 2	<input type="checkbox"/>	<input checked="" type="checkbox"/>
UC Davis Medical Center	2315 Stockton Blvd. Sacramento Lat 38° 33.28'N Long 121° 27.35'W	916-734-5669	55 Min	1.5 Hrs	Level 1	<input checked="" type="checkbox"/>	<input checked="" type="checkbox"/>

<p>6. Special Medical Emergency Procedures</p> <p>Line Emergency Crew Supervisor will contact Division Supervisor with patient complaint/condition and location.</p> <ul style="list-style-type: none"> - Division Group Supervisor Contacts: <ol style="list-style-type: none"> 1. Closest EMS resource 2. Caldor-West Zone Communications - Communications Unit Contacts: <ol style="list-style-type: none"> 1. Ground or Air ambulance as requested. 2. Operations 3. Safety - Division Supervisor or designee will serve as point of contact and run medical emergency on assigned channel. <ol style="list-style-type: none"> 1. A pre-assigned tactical frequency (i.e. CALCORD) should be used for IWI and only for duration of the emergency. - Communications Unit will clear the Command channel for emergency traffic as needed for duration of the need. - Medical Unit contacts <ol style="list-style-type: none"> 1. Communications 2. Operations 3. Crew Supervisor 	<p>Injury Reporting Procedures</p> <p>Nature of Injury: _____</p> <p>Location of Patient: _____</p> <p>Point of Contact: _____</p> <p>Resource Needs:</p> <p>Transportation Requested by: Air _____ Ground _____</p> <p>Point of Pick-Up: _____</p> <p style="padding-left: 40px;">Lat: _____ Long: _____</p> <p>Patient Unit ID: _____</p> <p>Is an EMT with Patient: Yes _____ No _____</p> <p>Age: _____ Sex: Male _____ Female _____</p> <p>ALL EMERGENCIES---Secure the area and identify witnesses for later investigation. Keep an accurate log of events.</p> <p>**IN CAMP EMERGENCY**</p> <p>Contact Caldor-West Zone Communications</p>
--	--

Check box if aviation assets are utilized for rescue. If assets are used, coordinate with Air Operations.

7. Prepared by:	Philip Skora MEDL	Signature:
8. Approved by:	J. Rabuck SOF1	Signature:


ICS 206	NIMS IAP	Date/Time:	09/02/21 1900
----------------	----------	------------	---------------

ICS 205 - INCIDENT RADIO COMMUNICATIONS PLAN


1. Incident Name: Caldor Incident BRANCHES 1 / 10 : WEST Z1		2. Date/Time Prepared Date: 09/02/2021 Time: 1600		3. Operational Period: Date To: 09/04/21 Time To: 0700	
--	--	--	--	---	--

4. Communications								
Ch#	Function	Name	Assigned To	Rx Freq	Rx Tone	Tx Freq	Tx Tone	Notes
1	COMMAND	CMD 105	WEST BRANCHES	172.4500N	114.8	166.9375N	114.8	SACRAMENTO PEAK
2	COMMAND	CMD 109	WEST BRANCHES	170.3875N	114.8	162.1750N	114.8	BIG HILL
3	COMMAND	CMD 104	WEST BRANCHES	170.7625N	114.8	165.6250N	114.8	NORTH OF HWY 50 BETWEEN DP 21 AND DP 24
4	COMMAND	CMD 1	WEST BRANCHES	170.9750N	114.8	168.7000N	114.8	LEEK SPRINGS
5	COMMAND	CMD 11	WEST BRANCHES	170.6875N	114.8	166.5750N	114.8	GRIZZLY FLATS AREA
6	COMMAND	CMD 113	WEST BRANCHES	170.3125N	114.8	165.6750N	114.8	KIRKWOOD MOUNTAIN
7	COMMAND	CMD 116	WEST BRANCHES	171.0375N	114.8	162.5875N	114.8	SCOUT PEAK
8	TACTICAL	VTAC11	DIV A/D	151.1375N	156.7	151.1375N	156.7	
9	TACTICAL	VTAC13	DIV F/G	158.7375N	156.7	158.7375N	156.7	
10	TACTICAL	CDF T26	DIV H	159.2925N	192.8	159.2925N	192.8	
11	TACTICAL	CDF T27	DIV I	159.3075N	192.8	159.3075N	192.8	
12	TACTICAL	NIFC T1	DIV AA / DIV QQ	168.0500N		168.0500N		EAST ZONE TACTICAL
13	A/G CMD	A/G CMD	ALL ZONES	167.9500N		167.9500N		
14	AIR TO GROUND	A/G TAC	WEST BRANCHES	164.1375N		164.1375N		
15	MEDICAL	CALCORD	ALL ZONES	156.0750N	156.7	156.0750N	156.7	MEDICAL COORDINATION
16	EMERGENCY	GUARD 3	ALL ZONES	168.6250N		168.6250N	110.9	EMERGENCY USE ONLY
17								
18								
19								
20	EMERGENCY	GUARD 3	ALL ZONES	168.6250N		168.6250N	110.9	EMERGENCY USE ONLY

5. Special Instructions
 TO CONFIRM YOU HAVE THE MOST CURRENT CLONE, ENSURE YOUR DISPLAY OF CHANNEL 16 OR 20 MATCHES CHANNEL 16 OR 20 OF THE 205 - HEIGHT AND POWER ARE KEY WHEN USING RADIOS; BE AT A HIGH POINT, USE A MOBILE IF POSSIBLE, AND USE RADIO RELAYS WHEN NEEDED

6. Prepared by (Communications Unit Leader): Name: J. BROOKS / B. RAPP		Signature: 
ICS 205 - CONTROLLED UNCLASSIFIED INFORMATION//BASIC		Date/Time: 09/02/21 1600

ICS 205 - INCIDENT RADIO COMMUNICATIONS PLAN

1. Incident Name:		2. Date/Time Prepared		3. Operational Period:				
Caldor Incident BRANCHES 20 / 30 : WEST Z2		Date: 09/02/2021	Date From: 09/03/21	Date To: 09/04/21				
		Time: 1600	Time From: 0700	Time To: 0700				
4. Communications								
Ch#	Function	Name	Assigned To	Rx Freq	Rx Tone	Tx Freq	Tx Tone	Notes
1	COMMAND	CMD 105	WEST BRANCHES	172.4500N	114.8	166.9375N	114.8	SACRAMENTO PEAK
2	COMMAND	CMD 109	WEST BRANCHES	170.3875N	114.8	162.1750N	114.8	BIG HILL
3	COMMAND	CMD 104	WEST BRANCHES	170.7625N	114.8	165.6250N	114.8	NORTH OF HWY 50 BETWEEN DP 21 AND DP 24
4	COMMAND	CMD 1	WEST BRANCHES	170.9750N	114.8	168.7000N	114.8	LEEK SPRINGS
5	COMMAND	CMD 11	WEST BRANCHES	170.6875N	114.8	166.5750N	114.8	GRIZZLY FLATS AREA
6	COMMAND	CMD 113	WEST BRANCHES	170.3125N	114.8	165.6750N	114.8	KIRKWOOD MOUNTAIN
7	COMMAND	CMD 116	WEST BRANCHES	171.0375N	114.8	162.5875N	114.8	SCOUT PEAK
8	TACTICAL	CDF T28	DIV N/P	151.1825N	192.8	151.1825N	192.8	
9	TACTICAL	CDF T29	KIRKWOOD STR GRP	151.3475N	192.8	151.3475N	192.8	KIRKWOOD STRCUTURE GROUP
10	TACTICAL	CDF T30	DIV R/T/U/W	151.3925N	192.8	151.3925N	192.8	
11								
12	TACTICAL	NIFC T1	DIV AA / DIV QQ	168.0500N		168.0500N		EAST ZONE TACTICAL
13	A/G CMD	A/G CMD	ALL ZONES	167.9500N		167.9500N		
14	AIR TO GROUND	A/G TAC	WEST BRANCHES	164.1375N		164.1375N		
15	MEDICAL	CALCORD	ALL ZONES	156.0750N	156.7	156.0750N	156.7	MEDICAL COORDINATION
16	EMERGENCY	GUARD 3	ALL ZONES	168.6250N		168.6250N	110.9	EMERGENCY USE ONLY
17								
18								
19								
20	EMERGENCY	GUARD 3	ALL ZONES	168.6250N		168.6250N	110.9	EMERGENCY USE ONLY
5. Special Instructions								
TO CONFIRM YOU HAVE THE MOST CURRENT CLONE, ENSURE YOUR DISPLAY OF CHANNEL 16 OR 20 MATCHES CHANNEL 16 OR 20 OF THE 205 - HEIGHT AND POWER ARE KEY WHEN USING RADIOS; BE AT A HIGH POINT, USE A MOBILE IF POSSIBLE, AND USE RADIO RELAYS WHEN NEEDED								
6. Prepared by (Communications Unit Leader): Name: J. BROOKS / B. RAPP			Signature: 					
ICS 205 - CONTROLLED UNCLASSIFIED INFORMATION//BASIC			NIMS IAP		1600			
			Date/Time: 09/02/21		1600			

ICS 205 - INCIDENT RADIO COMMUNICATIONS PLAN

CONTROLLED UNCLASSIFIED
INFORMATION//BASIC

1. Incident Name: Caldor Incident AEU/ENF INITIAL ATTACK ONLY		2. Date/Time Prepared Date: 09/02/2021 Time: 1600		3. Operational Period: Date To: 09/04/21 Time To: 0700				
4. Communications								
Ch#	Function	Name	Assigned To	Rx Freq	Rx Tone	Tx Freq	Tx Tone	Notes
1	COMMAND	ENFADM 1		172.3250N	156.7	165.2250N	110.9	FOREST ADMIN Tone 1-Alder
2	COMMAND	ENFADM 2		172.3250N	156.7	165.2250N	123.0	FOREST ADMIN Tone 2-Leek Springs
3	COMMAND	ENFADM 4		172.3250N	156.7	165.2250N	136.5	FOREST ADMIN Tone 4-Big Hill
4	COMMAND	ENFADM 6		172.3250N	156.7	165.2250N	156.7	FOREST ADMIN Tone 6-Echo Summit
5	COMMAND	XAM CT10		154.7625N	123.0	159.1800N	107.2	AMADOR CMD Tone 10-Leek Springs
6	COMMAND	XAM CT11		154.7625N	123.0	159.1800N	114.8	AMADOR CMD Tone 11-Zion Mountain
7	COMMAND	XED CT11		155.9025N	186.2	159.2775N	114.8	EL DORADO CMD Tone 11-Union
8	COMMAND	XED CT1		155.9025N	186.2	159.2775N	110.9	EL DORADO CMD Tone 1-Alder
9	COMMAND	XED CT4		155.9025N	186.2	159.2775N	136.5	EL DORADO CMD Tone 4-Big Hill
10	TACTICAL	R5 T4		166.5500N		166.5500N		REGION 5 TAC 4
11	TACTICAL	R5 T5		167.1125N		167.1125N		REGION 5 TAC 5
12	TACTICAL	R5 T6		168.2375N		168.2375N		REGION 5 TAC 6
13	TACTICAL	CDF T2		151.1600N	192.8	151.1600N	192.8	
14	TACTICAL	CDF T8		151.3700N	192.8	151.3700N	192.8	
15	AIR TO GROUND	A/G TAC	AIR TO GROUND	164.1375N		164.1375N		
16	EMERGENCY	GUARD	EMERGENCY	168.6250N		168.6250N	110.9	EMERGENCY USE ONLY
17								
18								
19								
20	EMERGENCY	GUARD	EMERGENCY	168.6250N		168.6250N	110.9	EMERGENCY USE ONLY
5. Special Instructions								
TO CONFIRM YOU HAVE THE MOST CURRENT CLONE, ENSURE YOUR DISPLAY OF CHANNEL 16 OR 20 MATCHES CHANNEL 16 OR 20 OF THE 205 - HEIGHT AND POWER ARE KEY WHEN USING RADIOS; BE AT A HIGH POINT, USE A MOBILE IF POSSIBLE, AND USE RADIO RELAYS WHEN NEEDED								
6. Prepared by (Communications Unit Leader): Name: J. BROOKS / B. RAPP			Signature: 					
ICS 205 - CONTROLLED UNCLASSIFIED INFORMATION//BASIC			Date/Time: 09/02/21 1830					

EAST ZONE

EAST CALDOR COMMUNICATION

1. Incident Name: EAST CALDOR		2. Date/Time Prepared Date: 9/2/2021 Time: 1700		3. Operational Period: Date From: 09/03/21 Time From: 0700		Date To: 09/04/21 Time To: 0700	
4. Communications		Assigned To	Rx Freq	Rx Tone	Tx Freq	Tx Tone	Notes
1	COMMAND	EAST BRANCHES	169.7500N	146.2	167.1000N	146.2	MONUMENT PK LINKED TO CMD93/ICP
2	COMMAND	EAST BRANCHES	166.6875N	146.2	162.9375N	146.2	SCOUT PK LINKED TO CMD5 TO ICP
3	COMMAND	EAST BRANCHES	172.0750N	146.2	162.2000N	146.2	UNASSIGNED
4	COMMAND						
5	COMMAND						
6	COMMAND	WEST BRANCHES	171.0375N	114.6	162.6875N	114.6	WEST COMMUNICATIONS
7	TACTICAL	DIV AA_QQ	168.0500N		168.0500N		NIGHT A/ADD
8	TACTICAL	DIV DD	166.7750N		166.7750N		NIGHT QQ/AA
9	TACTICAL	CHRISTMAS_DIV MM	168.6000N		168.6000N		
10	TACTICAL	COLD STR GRP	168.2500N		168.2500N		
11	TACTICAL	PIONEER STR GRP	154.2725N	156.7	154.2725N	156.7	NIGHT STRUCTURE GRP
12	TACTICAL	ANGOR STR GRP.	154.2875N	156.7	154.2875N	156.7	CONTINGENCY
13	A/G CMD	ALL ZONES	167.9500N		167.9500N		
14	AIR TO GROUND	EAST BRANCHES	169.2875N		169.2875N		
15	COORDINATION	ALL BRANCHES	156.0750N	156.7	156.0750N	156.7	MEDICAL COORDINATION
16	EMERGENCY	ALL BRANCHES	168.6250N		168.6250N	110.9	EMERGENCY
17							
18							
19							
20	EMERGENCY	GUARD 3	168.6250N		168.6250N	110.9	

EAST COMMUNICATION 208-850-8987, 208-850-2701

6. Prepared by (Communications Unit Leader): Name: SAL BONILLA JR COML
Signature: _____
ICS 205 Date/Time: _____



Caldor Incident West Ground Support

2441 Headington Road
Placerville, CA 95667

Fuel Locations

Card Lock
Dawson Oil Company
321 Pleasant Valley Rd
Diamond Springs, CA 95619

DP21
13200 US 50
Kyberz, CA 95720
Diesel Only

CalTrans Peddler Hill
41951 CA-88
Pioneer, CA 95666
Diesel Only

Contact: EQPM Kevin Bare (209) 388-5580

Repairs

Cal-OES Equipment

ChueThao (916) 213-5267
3791 Bradview Dr
Sacramento, CA 95827

Incident Repairs

Scott Hogan (530) 708-2730
2441 Headington Road
Placerville, CA 95667

10:00 p.m. to 6:00 a.m. repair contact number: (916) 206-8967

Transportation

EQPM Bob Johnson (530) 360-6313
EQPM (T) Kyle Popovich (719) 464-4858

Additional Contacts:

EQPM Fidel Fernandez (909) 520-1770
GSUL(T) Jason Truelock (209) 419-3678
GSUL Jeremy Christofferson (951) 287-0886



TRAINING MESSAGE

TRAINERS

- ▶ Sign off PTB tasks as their completed
- ▶ Complete the PTB Evaluation Record prior to Demob
- ▶ Complete an ICS 225 (Personal Performance Record) prior to Demob
- ▶ Complete the Final Evaluator's Verification page in the PTB if you are recommending them for qualification

TRAINEES

- ▶ Secure your PTB
- ▶ Ensure you have the above-mentioned documents completed and signed by your Trainer prior to Demob
- ▶ You do not have to wait for your assigned Demob time to close out with the Training Specialist

Don't train until you get it right, train until you cannot get it wrong!

**Any questions please contact the
Training Specialist:
Shane Vargas (530) 410-4225**



**DEMOBILIZATION PLAN - SUMMARY
CALDOR FIRE INCIDENT
CA-ENF-024030**

GENERAL INFORMATION

The Demobilization Plan is developed to facilitate the orderly removal and checkout of resources on the incident. By definition, surplus personnel are available for release if they have rested for a minimum of 8 hours, are cleaned up, outfitted and have a vehicle ready to depart to their next destination.

GENERAL GUIDELINES

- **NO RESOURCES WILL LEAVE THE INCIDENT UNTIL AUTHORIZED TO DO SO BY THE DEMOB UNIT.**
- Efforts will be made to ensure that all released personnel arrive at their destination prior to 2200 hours.
- All Resources will arrive at the Demobilizations Unit at their scheduled time Only.
- All government and hired vehicles leaving the incident will have a safety inspection. If a vehicle is within 1,000 miles of a "B" service, it is the responsibility of the resource to contact Ground Support and have an oil change prior to their scheduled demobilization time.
- **All Rental Vehicles will receive a safety inspection prior to leaving the incident.**
- All trainees are to keep their time up to date and report to the Training Specialist with their task books and evaluations prior to completion of the demobilization process.
- All strike team leaders are responsible to call **North Ops at 1-530-224-2466** immediately upon being released from the incident

RESPONSIBILITIES

Unit Leaders will declare resources excess to their **Section Chief**. **Section Chiefs** will declare excess resources to the Planning Section Chief through the **Resource Unit Leader**. This should be done 36 hours in advance of anticipated release. **Use the Declaration of Excess Resources sheet or General Message Form (ICS-213) to list all excess resources.** Include the resource name, request number, name of person, date and time of declared excess, and time in which the resource will be eligible to leave. Send to the **RESOURCE UNIT** where the resource will be determined to be surplus to the incident. Surplus resources will then be able to report to the **DEMOB UNIT**, receive a Demobilization Checkout Form (ICS 221), get the appropriate ICS 221 signatures, and then return the completed ICS 221 to the DEMOB UNIT prior to final release or reassignment. Resources are not to contact **South Ops** or the expanded dispatch center unless instructed to do so by the Demobilization Unit.

RELEASE PRIORITIES

1. **Organized fire departments**
2. **OES engines**
3. **Hired personnel and equipment**
4. **Other agencies (USFS, BLM, etc.)**
5. **Out of region CAL FIRE forces**
6. **Within Region CAL FIRE Forces**
7. **Unit CAL FIRE Forces**

TRAVEL INFORMATION

All resources will meet agency specific requirements on hours of travel per day. For CAL FIRE hand crews, a full 24 hour reset period shall be adhered to before departing from the incident. After a crew's last operational period they shall begin the demobilization release procedure during their 24 hour off shift. In addition, they must use the following complete 24 hour period as reset time before they depart from the incident.



FINANCE MESSAGE

FEDERAL RESOURCES

- Refer to Caldor Federal Finance Procedures

CAL FIRE TIME UNIT (Personnel and Hired Equipment)

- **CAL FIRE PERSONNEL** – Ensure you have started your eFC-33's and update after each shift. Please make sure Epay schedules are up to date.
- **HIRED EQUIPMENT SUPPLIERS** – Check-in with the TIME Unit and drop off your agreements.

DIVISION / GROUP - LINE SUPERVISORS

- Please turn in hired equipment shift tickets at the end of each shift.
- **SHIFT TICKET BOOKS** – Available in the TIME Unit for agency line supervisors only.

COMP / CLAIMS

- **Damage Claims (suppression, property, vehicle)**
 - ICS-213. We will need location, description of damages, and your contact information.



Federal Finance Message

TIME COLLECTION:

While submission of CTR's and Shift tickets is preferred, Federal Incident Finance will also accept hard-copy documents. Please see the Federal Finance Box located at the Finance Section Chief trailer at Placerville Camp, or near Ticket Windows at Heavenly Camp.

- ◆ PLEASE INCLUDE RO IN SUBJECT LINE OF EMAIL, PLEASE DOCUMENT H-PAY FOR DUTY BEING PERFORMED
- ◆ PLEASE MARK YOUR LAST DAY AS **FINAL** WHEN YOU ARE DEMOBING
- ◆ PLEASE MAKE EVERY EFFORT TO TURN IN ALL CTR'S AND SHIFT TICKETS DAILY.
- ◆ PLEASE INCLUDE DOCUMENTATION ON CTR OR SHIFT TICKET OF SUPERVISOR APPROVAL OF LODGING AND/OR MEAL REINBURSMENT, IN ADDTION TO RECEIPTS
- ◆ PLEASE INCLUDE YOUR RESOURCE ORDER # ON ALL DOCUMENTATION SUBMITTED, INCLUDING RECEIPTS.
- ◆ IF EQUIPMENT HAS BEEN ASSIGNED MORE THAN 14 DAYS, FEEL FREE TO CONTACT US TO REQUEST AN INTERIM/PROGRESS INVOICE PAYMENT.
- ◆ PLEASE ENSURE YOU INCLUDE LOCATION OF WHERE YOU ARE WORKING (BRANCH OR DIVISION) ON CTR OR SHIFT TICKET

FINANCE CHECK IN:

- ◆ PLEASE ENSURE THE BELOW DOCUMENTS ARE EMAILED TO FINANCE WITH RO NOTED:

Agency Equipment/Crews:	Overhead:	Contract Equipment/Contract Crews:	Cooperator:
<ul style="list-style-type: none"> • Manifest • Resource Order • CTR's 	<ul style="list-style-type: none"> • Resource Order • AD Hire Form (If an AD) • CTR's 	<ul style="list-style-type: none"> • Agreement/Manifest • Resource Order • Shift Ticket • Inspection Forms 	<ul style="list-style-type: none"> • Cooperative Agreement • Resource Order • Shift Ticket • Inspection Forms

CALDOR FEDERAL FINANCE PROCEDURES



Finance Email: 2021.caldor.finance@firenet.gov

Finance Hotline: 530-330-5450

Directions for emailing Documents:

<p style="text-align: center;">Federal Contract Resources</p> <p>Send To: 2021.caldor.finance@firenet.gov SUBJECT: Include Key Word: <i>Equipment</i></p>	<p style="text-align: center;">Federal Overhead and Crews</p> <p>Send To: 2021.caldor.finance@firenet.gov SUBJECT: Include Key Word: <i>Time</i></p>
---	--

DOCUMENTS TO EMAIL TO FINANCE

	<p>Federal Overhead and Crews</p>	<p>Regular Government Personnel & ADs attachments: @Check-In: Crew Manifests, MOUs, or Cooperative Agreement (if applies), AD Casual Hire Sheet/RO Daily: Crew Time Report (CTR), Shift Ticket (<i>when applies</i>), receipts (fuel issues, travel receipts, etc.) @Demob: Signed OF288, Final Equipment Use Invoice</p>
	<p>Federal Contract Resources</p>	<p>Private: Contractor Attachments: @Check-In: Resource Order, Full Contract/Agreement, Certifications <i>(if required)</i>, Pre-Inspection Daily: SHIFT Tickets, receipts (fuel issues, claims, etc.) @Demob: Contractor Evaluations, Final Shift Tickets and receipt for Addition/Deductions, Post-Inspection, Final Signed Invoices</p>

FEDERAL FINANCE DEMOB PROCEDURES

All Resources will be sent their **DRAFT OF-288/OF-286's** via the Finance email. 12 hours will be provided to allow the resource to review their document and reply back to Finance with the statement "No Corrections Necessary" or a description of any issues. After Finance receives the email, any discrepancies will be resolved. Next, the resource is sent the **FINAL DOCUMENT** for signature. They will then email the signed document back to Finance, if able. Finance will then sign the **FINAL DOCUMENT** and email it back to the resource. This completes the process.

SHIFT TICKET EXAMPLE

EMERGENCY SHIFT TICKET and EVALUATION FORM					Contractor Name DOZER DUDE	
Incident or Project Name CALDOR		Incident Number CAENF024030		Request Number E#		Operator #1 BOB SMITH
Agreement Number XXX - 000000 - 00		Equipment Make CAT		Equipment Model / Type D6XM		Operator #2 TOM SMITH
Serial Number 111111		Licence Number 111111		Operator Furnished By: <input checked="" type="checkbox"/> Contractor <input type="checkbox"/> Government		Operating Supplies Furnished By: <input checked="" type="checkbox"/> Contractor <input type="checkbox"/> Government
Equipment Use (Circle) Hours Days / Miles		Assignment		Equipment Status <input checked="" type="checkbox"/> Inspected <input checked="" type="checkbox"/> Under Agreement		
Date Mo / Day	Start	Stop	Work	Remarks/Comments **		
8/18	0700	2400	17	NO DAMAGE/ NO CLAIMS		
8/19	0001	0700	7			
Vendor Rating		Poor*	Avg.	Good	Exc.	N/A
Met Performance Expectations		Vendor Rating must be done.				Govt. Rep. Name and Position - PRINT Mike Weber
Equipment in Safe Working Condition						Govt. Rep. Signature <i>Mike Weber</i>
Operator Skill Level						Contractor Signature <i>Bob Smith</i>
Operates Safely						Date 07/13/21
Operator's Cooperation Level						Time 0800
Overall Performance		* NOTE: Any rating of POOR requires an explanation in Comment Section.				CALFIRE 297 (Rev 3-2011)
		**Final evaluation or for more documentation, use an ICS Form 230 or equivalent.				
Pink - Finance		Blue - Home Unit HE Coordinator		Yellow - Vendor		White - Govt Representative

EMERGENCY SHIFT TICKET and EVALUATION FORM					Contractor Name DUDE TRANSPORT	
The responsible Government Officer will complete this form each shift						
Incident or Project Name CALDOR		Incident Number CAENF024030		Request Number E # Here		Operator #1 BOB SMITH
Agreement Number XXX - 000000 - 00		Equipment Make TRANSPORT/ KENWORTH		Equipment Model / Type COZAD TRAILER /26 WHEELS		Operator #2 TOM SMITH
Serial Number 1XP3ESMP14239012		Licence Number 9999999		Operator Furnished By: <input checked="" type="checkbox"/> Contractor <input type="checkbox"/> Government		Operating Supplies Furnished By: <input checked="" type="checkbox"/> Contractor <input type="checkbox"/> Government
Equipment Use (Circle) Hours Days / Miles		Assignment		Equipment Status <input checked="" type="checkbox"/> Inspected <input checked="" type="checkbox"/> Under Agreement		
Date Mo / Day	Start	Stop	Work	Remarks/Comments **		
8/18	0700	2400	17	NO DAMAGE/ NO CLAIMS		
8/19	0001	0700	7			
Vendor Rating		Poor*	Avg.	Good	Exc.	N/A
Met Performance Expectations		Vendor Rating must be done.				Govt. Rep. Name and Position - PRINT Mike Weber
Equipment in Safe Working Condition						Govt. Rep. Signature <i>Mike Weber</i>
Operator Skill Level						Contractor Signature <i>Bob Smith</i>
Operates Safely						Date 07/13/21
Operator's Cooperation Level						Time 0800
Overall Performance		* NOTE: Any rating of POOR requires an explanation in Comment Section.				CALFIRE 297 (Rev 3-2011)
		**Final evaluation or for more documentation, use an ICS Form 230 or equivalent.				
Pink - Finance		Blue - Home Unit HE Coordinator		Yellow - Vendor		White - Govt Representative

Turn shift tickets into Time Unit.



CAL FIRE STRIKE TEAM WORKSHEET



INCIDENT NAME:	
INCIDENT #:	
STRIKE TEAM ID:	

COMMIT DATE:	
COMMIT TIME:	

REQUEST #	STRIKE TEAM LEADER NAME	CLASSIFICATION	CELL #	DUTY DAYS	HOME STATION
EQUIP #					
ID X #.					

REQUEST #	PERSONNEL NAMES	CLASSIFICATION	CELL #	DUTY DAYS	HOME STATION
EQUIP #					
ID X #.					

DOZER/CHAIN SAW HOURS:	DATE:	HRS:	DATE:	HRS:	DATE:	HRS:	DATE:	HRS:
------------------------	-------	------	-------	------	-------	------	-------	------

REQUEST #	PERSONNEL NAMES	POSITION	CELL #	DUTY DAYS	HOME STATION
EQUIP #					
ID X #.					

DOZER/CHAIN SAW HOURS:	DATE:	HRS:	DATE:	HRS:	DATE:	HRS:	DATE:	HRS:
------------------------	-------	------	-------	------	-------	------	-------	------

REQUEST #	PERSONNEL NAMES	POSITION	CELL #	DUTY DAYS	HOME STATION
EQUIP #					
ID X #.					

DOZER/CHAIN SAW HOURS:	DATE:	HRS:	DATE:	HRS:	DATE:	HRS:	DATE:	HRS:
------------------------	-------	------	-------	------	-------	------	-------	------

REQUEST #	PERSONNEL NAMES	POSITION	CELL #	DUTY DAYS	HOME STATION
EQUIP #					
ID X #.					

DOZER/CHAIN SAW HOURS:	DATE:	HRS:	DATE:	HRS:	DATE:	HRS:	DATE:	HRS:
------------------------	-------	------	-------	------	-------	------	-------	------

REQUEST #	PERSONNEL NAMES	POSITION	CELL #	DUTY DAYS	HOME STATION
EQUIP #					
ID X #.					

DOZER/CHAIN SAW HOURS:	DATE:	HRS:	DATE:	HRS:	DATE:	HRS:	DATE:	HRS:
------------------------	-------	------	-------	------	-------	------	-------	------

DEMOB

RETURN DATE: _____

RETURN TIME: _____



CALDOR INCIDENT PEER SUPPORT:



The Caldor Peer Support Team is available on the incident for any peer support needs.

Examples of peer support needs are, but not limited to, understanding stress reactions, dealing with traumatic experiences, professional or personal crisis, other behavioral health impacts and/or obtain vetted resiliency resources.

The best way to get a hold of a Peer Team member is to call the number below or stop by the ESS Trailer.



Peer Support Handouts

In addition, there is an on-site clinician available to meet on an individual and/or group basis.

**Caldor Incident Peer Support Help Line
916-206-9957**

Watch for the signs and symptoms of stress in yourself and the people around you. Try and stay positive and get much needed rest when you can. We can do this, together!

A message to our firefighters from ASHLEY IVERSON.



Stay Healthy, Stay Alert and Stay Strong!

**Official Sources of Public Information for
CALDOR FIRE WEST ZONE**

Incident Information Line: (530) 303-2455	Incident Media Line: (530) 806-3212
Incident Website: www.fire.ca.gov	Email Signup: https://tinyurl.com/bbhw2cm5



@CALFIREAEU
@EldoradoNF



@CALFIREAEU
@EldoradoNF



@CALFIRE_AEU

SCAN ME FOR



CALDOR FIRE
INFORMATION

STATUS	
Incident Start Date: August 14, 2021	Total Personnel:
Acreage:	Containment:

Media Law

The California State Penal Code Section 409.5(d) allows the news media to enter scenes of disaster, riot, or civil disturbance. Properly identified members of the news media should not be restricted from entering locations specified within the code. However, this does not include crime scenes, and does not imply that the news media may interfere with incident operations while they are in the areas of concern. If entering such a location that is hazardous, they should be advised; media access cannot be prevented for safety reasons unless their presence would impede CAL FIRE's mitigation of the incident or the disturbing of evidence. When working around the media, remember:

- Media **is not permitted** on private property without the property owners permission.
- If approached and questioned by the media and or the public, talk about your assignment or task at hand. Remember to wear all the appropriate PPE.
- If needed call for an incident PIO through the chain of command.
- Never speculate, give opinions or speak for others.
- There is no such thing as an "off the record" comment.

CAL FIRE Social Media Policy (Social Media 0691)

Social Media is increasingly being used by public agencies, the media as well as the public. This form of communication continues to grow rapidly in order to supply the instant gratification needs of society. Therefore when on a CAL FIRE incident you will adhere to the CAL FIRE Social Media Policy, 0691. You can get further information about the CAL FIRE Social Media Policy from the incident Public Information Officer. While assigned to the incident, there will be no posting of:

- Inappropriate information or materials
- No opinions
- No endorsements
- Inappropriate pictures or videos

Lost and Found

The Information Section will manage Lost and Found items for the incident. If you have lost an item leave your contact information and what you have lost at the Information Section. If you have found an item on the incident bring the item to the Information Section with your contact information as well.

Incident Base Camp Mailing Address

c/o Public Information Office/Trailer
102 Placerville Dr.
Placerville, CA 95667



Resource Advisor Update

Avoidance areas for cultural and sensitive resources are being flagged within Divisions. If work needs to occur in areas identified by the following flagging/placard, please contact a REAF assigned to your Branch.

Avoidance Areas = Pink/Black Checkered Flagging and yellow placards



Lead READ – Jen House available at ICP



DOZER PARKING
Caldor Incident
CA-ENF-024030

Directions

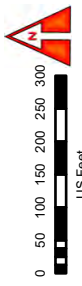
Take 50 EAST

EXIT Missouri Flat Rd

Turn LEFT on Missouri Flat Rd

Turn RIGHT Mother Lode Dr

Destination is in 2.4 miles



DISCLAIMER:
The displayed incident data is approximate and should not be used for legal purposes. The data was derived from GIS data maintained by various sources and approved for use by the Incident Response Team. The data is not intended for use in any engineering standards.

Dozers and Heavy Equipment

**5854 Mother Lode Dr.
Placerville, CA 95667**



Father Lode Rd

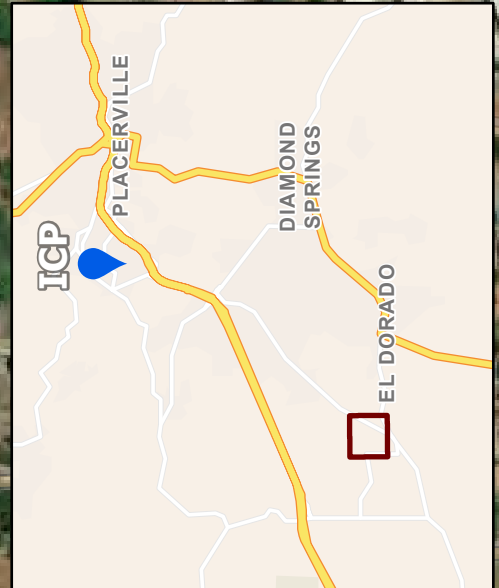
Venture Rd

Venture Rd

Irish Port Ln

Mother Lode Dr

Southern Pacific



50

120°52'W



BASECAMP MAP
Caldor Incident
 CA-ENF-024030
 August 31, 2021

- 1 Trailer Row
- 2 Meeting
- 3 Equipment time
- 4 FSC
- 5 Lunch/water/ice
- 6 Liaison
- 7 PIO/media
- 8 Inmate shower/laundry
- 9 Clerical
- 10 ESS
- 11 Supply
- 12 Briefing
- 13 Overhead parking
- 14 Sleeper trailers
- 15 Main gate
- 16 Tent sleeping
- 17 Engine parking
- 18 Engine/Truck parking
- 19 Tent sleeping
- 20 Engine/Truck parking
- 21 Shower
- 22 Laundry
- 23 Vendor Parking
- 24 Facilities
- 25 Feeding
- 26 Plans
- 27 Situation
- 28 READ
- 29 MKU
- 30 CAL-MAT
- 31 IT

Dozers and Heavy
 Equipment

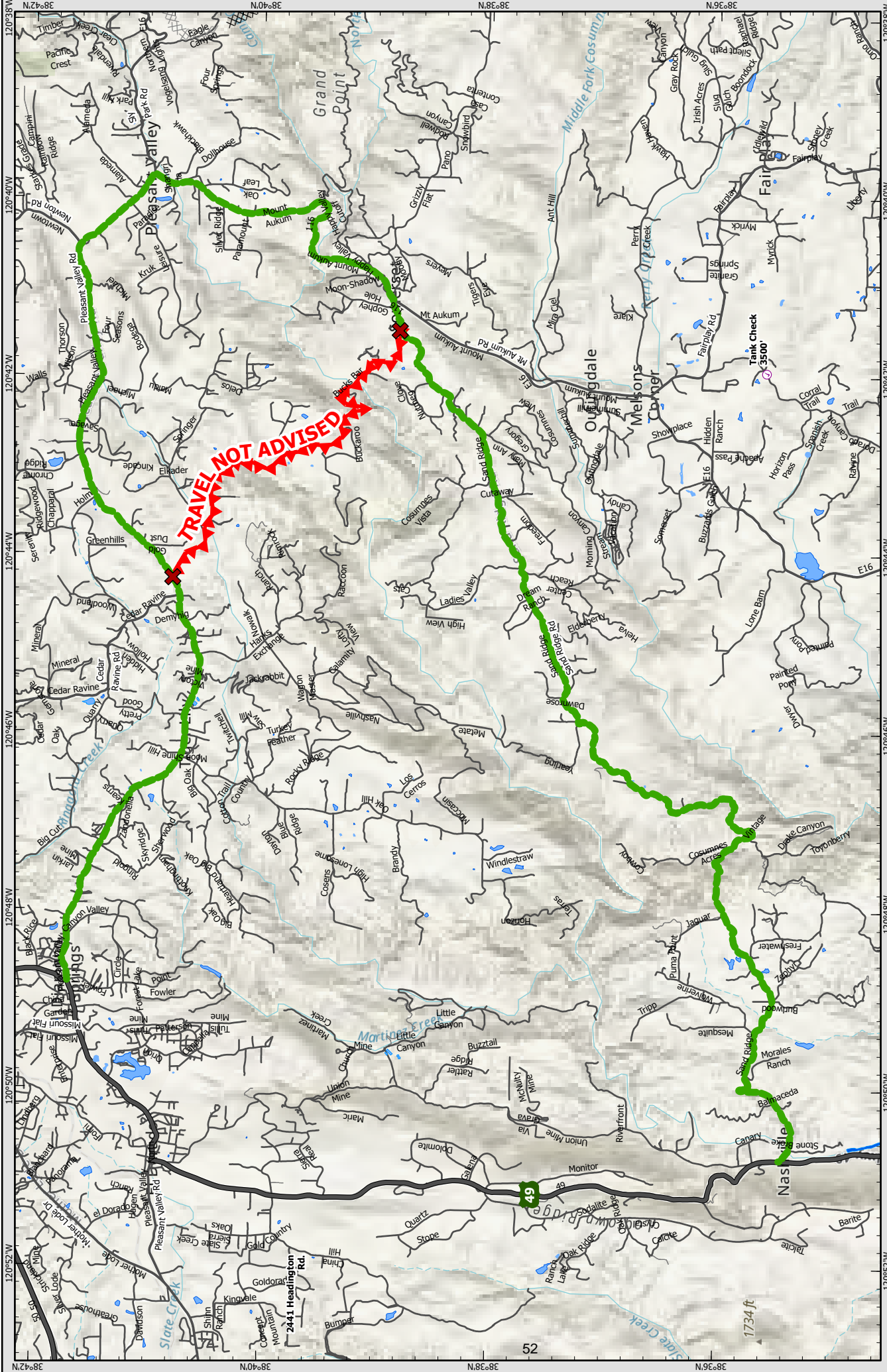
5854 Mother Lode Dr.
 Placerville, CA 95667



This document is for informational purposes only and should not be used for operational purposes. The information contained in this document is subject to change without notice. The information is provided for informational purposes only and does not constitute an offer of insurance or any other financial product. © 2021 NIMO. All rights reserved.



- 1 Trailer Row
- IC
- Ops
- COML
- IMET/FBAN
- Logs
- Ordering
- Safety
- Check-in/demob
- Air ops
- CalFire Coms
- Motel
- Medical



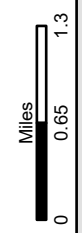
Water Tender Route

Calder Incident

CA-ENF-024030



Datum: NAD 83 1:81,501

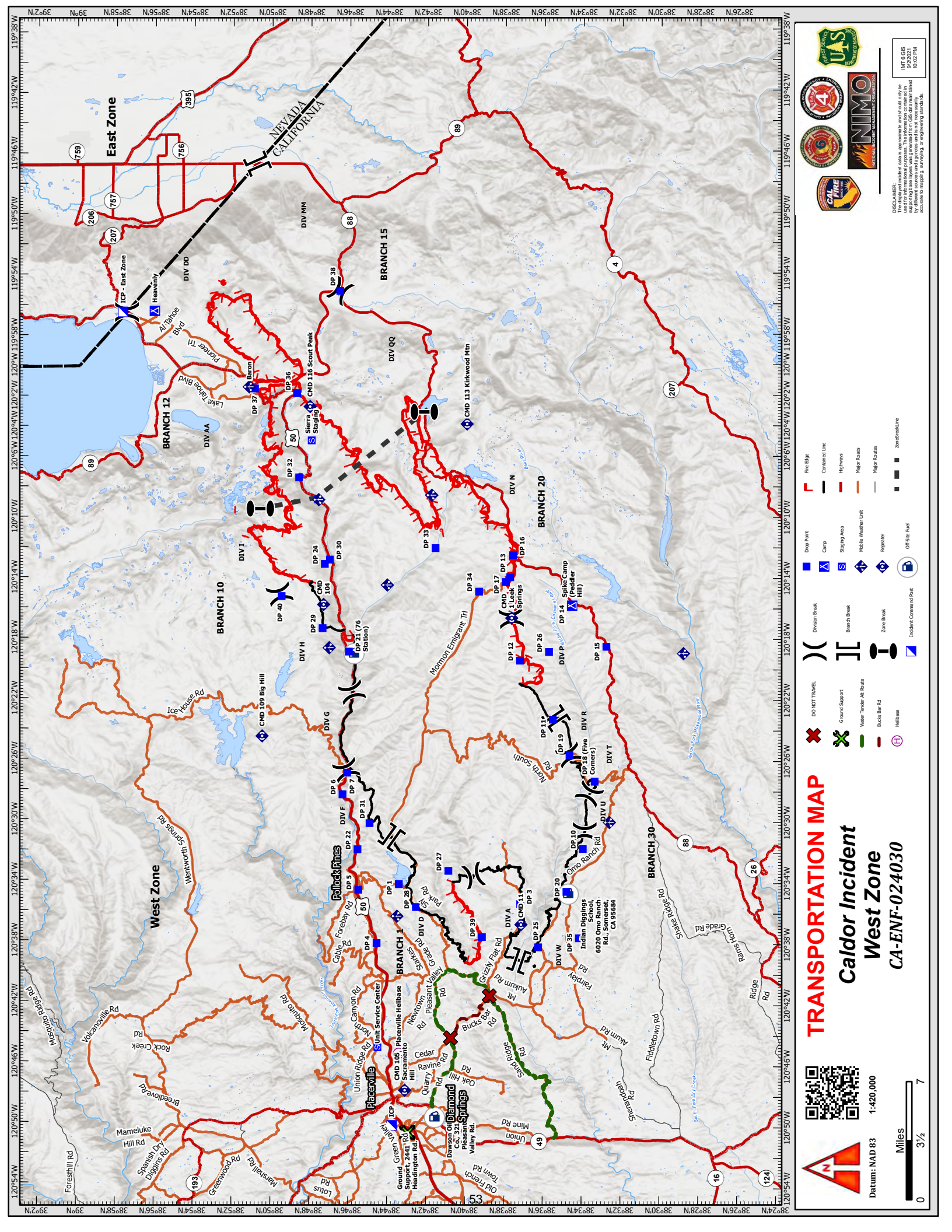


- Off-Site Fuel
- Ground Support
- DO NOT TRAVEL
- Bucks Bar Rd
- Completed Dozer Line
- Planned Doz
- LocalRoads



DISCLAIMER:
The displayed incident data is approximate and should only be used for reporting base layer. It was generated from GIS data maintained by CAL FIRE. Accuracy is not guaranteed. For more information, contact your local fire agency or engineering standards.

IMF 6GIS
6/21/2021
3:46 PM



TRANSPORTATION MAP

Caldor Incident

West Zone

CA-ENF-024030



Datum: NAD 83 1:420,000

Miles 0 3 1/2 7



DISCLAIMER:
The displayed incident data is approximate and should only be used for reporting base system. It was generated from GIS data maintained by the Incident Management System (IMS) and is not intended to be accurate to mapping, surveying, or engineering standards.

IMT 6GIS
9/2/2021
10:22 PM

	Fire Edge		Drop Point		Division Break
	Contained Line		Camp		DO NOT TRAVEL
	Highways		Staging Area		Ground Support
	Major Roads		Mobile Weather Unit		Water Tanker At Route
	Major Routes		Repeater		Bus Stop Rd
	Zone Boundaries		Off Site Fuel		Helibase
	Zone Boundaries		Incident Command Post		

