

**INCIDENT ACTION PLAN**  
**CALDOR INCIDENT**  
**WEST ZONE**

**CA-ENF-024030**  
**P5N8GM21**

**Tuesday**



**OPERATIONAL PERIOD**

**9/7/2021      0700**  
**to**  
**9/8/2021      0700**

[Click Here](#)  
[Current Incident Link](#)








## ORGANIZATION ASSIGNMENT LIST (ICS 203)

<b>1. Incident Name:</b> Caldor Incident - West Zone		<b>2. Operational Period: Date From:</b> 9/7/2021 Time From: 0700		<b>Date To:</b> 9/8/2021 <b>Time To:</b> 0700	
<b>3. Incident Commander(s) and Command Staff:</b>			<b>7. Operation Section:</b>		
IC/UC's	J. Veik / J. Reinarz / D. Martin (T)		Operations	E. Schwab / B. Monday	
Deputy	M. Marcucci / J. Janssen (T)		Deputy Operations	S. Lane / C. Bogan (T)	
Safety Officer	J. Buchmeier / J. Rabuck / J. Novak / T. Adams (T)		Night Ops	J. Marsh / L. Monsen (T)	
Information Officer	I. Sanchez / K. Greene / J. Chumbley (T)				
Liaison Officer	J. Kiszka / M. Watson (T)				
<b>4. Agency/Organization Representatives:</b>			<b>Branch</b>	<b>I</b>	
USFS AREP	J. Marsolais		Division/Group	A / D	L. Stacher / J. Scofield (T)
Cal Fire AREP	M. Blankenheim		Division/Group		
EDSO	G. Almos		Division/Group		
SPI	T. Tate		<b>Branch</b>	<b>X</b>	<b>M. Martinez (12) / M. League (PM)</b>
PG&E	M. Webb		Division/Group	F / G	C. Allen (T) / D. Winnacker (T)
COVID-19 Advisor	K. Nimmo / K. Obele		Division/Group	H	M. Watson
EMSA Agency Admin	B. Gates		Division/Group	I	C. Periera (12) / J. Spindler (T)
Grizzley Flats CSD	J. Lauther		Division/Group	Contingency	M. Khazaal (T)
Lake Valley Fire Dist	B. Zlendick		Division/Group		
IBA	J. Bennett		Division/Group		
Amador County Sheriff	J. Navarre		<b>Branch</b>	<b>XX</b>	<b>R. Engler / D. Bakken (T)</b>
Placerville PD	J. Wren		Division/Group	N / P	B. Muenzer / W. Almand (12)
CCC	H. Garcia / L. Setzer-Gonzalez		Division/Group		
CHP	R. Hatfield		Division/Group		
Cal Trans	G. Duffy		Division/Group		
BLM	J. Martinez		<b>Branch</b>	<b>XXX</b>	
Cal OES	D. Franklin		Division/Group	R / T / U / W	G. Gregory (ENG 1263)
AT&T	K. Young		Division/Group		
El Dorado Irrigation Dist.	D. Corcoran		<b>Branch</b>	<b>FSR</b>	
<b>5. Planning Section:</b>			Division/Group	Group 1	D. Erickson (12)
Chief	G. Garcia / D. Scheurich (T) / D. Carter		Division/Group	Group 2	P. McDaniel (12)
Deputy	S. Sherwood (T) / B. Phillips (T)		Division/Group		
Resource Unit	J. Anderson / M. Thomas / B. Torosian		Division/Group		
Situation Unit	I. Crossley / D. Van Goidsenhoven K. Tsundama / T. Byrd (T)		Division/Group		
Demobilization Unit	T. Shevenell / L. Pasero / J. Perez (T)		Staging Area	ICP Staging	D. Hames (12) / R. McMillen (12)
GISS	C. Poli		Division/Group		
FBAN	S. Volmer		Division/Group		
IMET	J. Dudley		Division/Group		
Hired Equipment Tech Spec.	C. Myers / M. Meirinho (T)		<b>Air Operations Branch:</b>		<b>Director:</b> C. Inwood (T)
Training Specialist	S. Vargas / J. Rustice (T)		Air Operations Branch Deputy		M. Stanford
Crew Tech Spec.	J. Rafferty		Air Support Group Supervisor		F. Abril (T)
Fire Suppression Repair	S. DeBenedet		Air Tactical Group Supervisor		
Strategic Op. Planner	K. Soper / T. Riesenhuber		Helibase Manager		R. Johnson
<b>6. Logistics Section:</b>			<b>8. Finance/Administration Section:</b>		
Chief	S. Dohman / Z. Cunningham		Chief	S. Hogan / D. Reid	
Deputy Chief	J. Warden (T) / N. Glidden (T)		Deputy Chief	G. Belk / S. Vincent (T)	
Supply Unit	P. Lee / B. Luiz (T)		Time Unit	J. Navarro	
Facilities Unit	D. Zumkeller / J. Finley		Procurement Unit	M. Lamonica	
Ground Support Unit	J. Christofferson		Comp/Claims Unit	B. Stirton	
Communications Unit	J. Brooks / B. Rapp		Cost Unit	J. Tapia	
Medical Unit	J. Segura / M. Hnat				
Motel Unit	J. Tomsich / C. Miller				
Food Unit	M. Riveria / B. Brewer (T)				
<b>Prepared By: Name:</b>	D. Scheurich	<b>Position/Title:</b>	PSC1	<b>Signature:</b>	
<b>ICS 203</b>		<b>Date/Time:</b>	9/6/2021 2300 hours		





## FIRE BEHAVIOR FORECAST

FORECAST NUMBER: 20	TYPE OF FIRE: WILDFIRE
FIRE NAME: CALDOR WEST ZONE CAENF-024030	OPERATIONAL PERIOD: 9/7-9/8/21 0700-0700
DATE ISSUED: 9/6/2021	TIME ISSUED: 1900 
UNIT: ELDORADO NATIONAL FOREST	SIGNED: Typed/printed: Stephen Volmer FBAN

### INPUTS

#### WEATHER SUMMARY:

Sunny and warm. Daytime humidity remains very low 8-13% with temperatures 93-99 degrees. Winds southwest after 9am 6-11mph with gusts to 18mph. Hwy 50 corridor could experience gusts to 25mph. Ridgetop winds southwest 12-17mph gusting to 25mph. Nighttime temperatures will be 64-78 degrees with humidity 22-32%, with ridgetop winds southwest 6-10mph. Expect a very thin inversion in the lower elevations and drainages to form overnight.

**\*\*Review the weather forecast for more details and QR for RAWs unit information\*\***

### OUTPUTS

#### FIRE BEHAVIOR

FUEL MODEL	RATE OF SPREAD FT/MIN	FLAME LENGTH FT	SPOTTING DISTANCE	PROBABILITY OF IGNITION
TIMBER LITTER	10	6	.6 miles	91%
UNDERSTORY	23	11	.6 miles	91%
BRUSH	67	10	.4 miles	91%

#### GENERAL:

BRANCH 1... Smoldering material will continue to be found. Expect call for service to increase due to repopulation of the area.

BRANCH 10... Heavy fuels near the river will continue to burn out and smolder. Continued active burning in Div I. Fire behavior will allow for direct tactics. Interior islands and green stringers will continue to burn out.

BRANCH 20... The fire will continue to be active in Div N. Expect spot fires to continue to be found and initiate new fires. Interior islands, heavy fuels, and green stringers will continue to burn out and threaten the control lines.

BRANCH 30... Smoldering material will continue to be found. Expect calls for service to increase due to repopulation of the area.

#### SPECIFIC:

- Erratic winds will be possible in all the drainages, especially those along Hwy 50, Div I, Div N.
- Fuels remain critically dry. Review the Fuels and Fire Behavior Advisory.
- Single and group tree torching will continue to occur with the high chance of producing new spot fires.

#### AIR OPERATIONS:

Limited visibility until the inversion layer burns off early in the morning. Transport winds out of the south 14mph with a mixing height of 7,000' AGL. Air resources may be limited or ineffective due to reduced visibility.

Sunset 19:23      Sunrise 06:39

#### SAFETY:

- Getting frequent spot fires across the control lines. Where there is one, there will be more.
- Smoldering ash pits and material will continue to be a source of heat, smoke, and service calls.
- Fire weakened timber will continue to release. This could block roadways and escape routes.

# Fuels and Fire Behavior Advisory

## Northern California

September 1, 2021 to September 15, 2021



**Subject:** Potential for extreme fire behavior due to critically low live and dead fuel moistures, very dry conditions resulting from persistent drought, minimal snowpack and spring precipitation, and elevated fire danger rating values across much of northern California.

**Discussion:** Fires burning in northern California are exhibiting extreme fire growth based on critical fuel conditions. Fire spread is fuel driven and does not depend on wind to spread. Events with wind have led to extreme rates of spread. Surface fuels are very receptive to embers. Long range spotting, area ignition, and group torching is occurring on large fires frequently.

**Difference from normal conditions:** Northern California is in a drought; currently with 90% at Extreme to Exceptional levels. The drought is expected to persist or intensify throughout the fire season. Deficient rainfall and snowpack with early melt off has resulted in fuels that are below average in dryness, with record setting conditions for most areas.

### Concerns to Firefighters and the Public:

- Energy Release Component (ERC) at numerous weather stations set record maximums already this year and are running at or above the 97<sup>th</sup> percentile in most cases. Expect increased fire intensity and spread rates in these areas. Early season extreme fire behavior has been observed in both light and heavy fuels. **Anticipate increased spread rates, spotting, and active nighttime burning.**
- The combination of persistent drought and record-low rainfall and snowpack amounts has led to very low live and dead fuel moistures. Low 1000-hour fuel moistures have been evidenced by complete consumption of dead fuels on recent fires. Live fuel moistures in grasses, shrubs and trees, have already reached critical levels in many areas of Northern California due to limited green-up this spring. **Expect fires to ignite easier and spread faster. Do not expect fires to exhibit reduced fire behavior when entering areas of live fuels; anticipate increased spread rates and spotting.**
- Direct attack is often not feasible under regular diurnal wind conditions with ground resources. And aviation utilization is often insufficient in moderating rate of spread without immediate heavy ground resource response. **Anticipate higher resistance to control in all fuel types.**
- Already this year, Northern California has experienced large fire activity and multiple team deployments. California will likely experience an extended fire season. It is important to be mindful of and manage fatigue for all resources. **Everyone, every day, returns home safely.**

### Mitigation Measures:

- Local and inbound fire personnel need to be aware that fire behavior across the state is exceeding normal expectations for this time of the year. **Local briefings need to be thorough and highlight specific fire environment conditions. These include but are not limited to local weather forecasts, Pocket Cards, ERC's, live and dead fuel moistures.**
- Suppression actions need to be based on good anchor points, escape routes, and safety zones. **Remember LCES. Experienced lookouts are essential under these conditions.**
- Base all actions on current and expected behavior of the fire. **Augment initial attack resources as incident activity dictates.**

**Area of Concern:** Northern California except for the following Predictive Service Areas: North Coast and Bay Marine, west of Highway 101 in Mid-Coast to Mendocino and Diablo-Santa Cruz, and the north eastern portion of Far Eastside.





# SAFETY MESSAGE

## CALDOR INCIDENT WEST ZONE

1. Incident Name: CALDOR	2. Operational Period: Date From: 09/07/21      Date To: 9/08/21 Time From: 07:00                                      Time To: 07:00
--------------------------	--

### DRIVING HAZARDS & ROADWAYS

**Safe Speeds are a must!** Suppression repair and repopulation is ongoing.  
Expect distracted drivers in fire areas; we are sharing the road.  
Reduce speed on blind curves, steep grades and in low visibility.

### CRITICALLY LOW FUEL MOISTURES

Expect rapid fire growth and rates of spread for any new fire starts.  
**Anticipate spotting** in receptive fuel beds adjacent to active burning. **Assign lookouts!**  
Evaluate unburned islands for re-burn potential.

### TREE HAZARDS & SNAGS

**Tree Hazards** – Look up, look down, look around; check overhead canopy.  
Trees don't just threaten the **LINE**, they threaten your **LIFE!**  
Gravity and wind increase potential, Assign **Lookouts** for your work area.

### THINK BIG PICTURE; STAY ENGAGED & AWARE OF SURROUNDINGS

**PPE** for the **potential of the operation**, not just the work at hand.  
**Watch Out for Roll Out and Falling Rocks**; know who is above or below you.

### FATIGUE, HEAT & DEHYDRATION

**MONITOR** yourself and your personnel for **FATIGUE** and **DEHYDRATION**.  
Maintain appropriate **Work Rest Cycles**, Seek shade when possible.  
Time to Think = Time to Drink. **Stay Hydrated!**

### HEALTH & WELLNESS: COVID-19

**COVID-19** best practices: Disinfect surfaces & door handles, including vehicles.  
**Social Distancing** encouraged, **Masks mandatory** at Operational Briefing Areas.  
**COVID-19 symptoms:** Fever or chills, Congestion, Cough more than expected, Muscle or body aches, New loss of taste or smell, Shortness of breath, or Nausea and vomiting.



4. Site Safety Plan Required? Yes  No

5. Prepared by: Name: J. Novak SOF1 Jen Rabuck SOF1

ICS 208	Date/Time September 6, 2021 / 1900
---------	------------------------------------



**CALDOR INCIDENT WEST ZONE  
RISK ANALYSIS (ICS 215-A)**

DIV	HAZARDOUS ACTIONS/CONDITIONS	MITIGATIONS / WARNINGS / REMEDIES
ALL	<b>DRIVING HAZARDS</b>	<p><b>SLOW DOWN! That means ALL resources and agencies!</b>            Use headlights – avoid “auto headlight” settings that may not activate in smoke or do not trigger taillights to turn on.            Do 360s before moving vehicles. Utilize chocks, spotters, and backers.  <b>Be alert for increased civilian presence in repopulated areas.</b>            Watch speed through communities; public perception and safety are key.            Keep roadways clear for through traffic and park away from travel paths.</p>
ALL	<b>COVID 19, ILLNESS, &amp; HYGIENE</b>	<p>Adhere to local, state, federal and CDC health guidelines.            Maintain social distancing. Wear a <b>mask</b> regardless of vaccination status when in clusters, briefings, chow lines, etc.  <b>Report any illness symptoms immediately to a supervisor.</b>            Hygiene, hand washing, and disinfecting of surfaces &amp; handles often, including vehicles.            Enact practices that protect all assigned resources despite personal opinions. Err on the side of the potential best outcome to protect against all infectious diseases.</p>
ALL	<b>IGNITION POTENTIAL/ FIRE BEHAVIOR</b>	<p>Monitor weather conditions and forecasts. Make sure all personnel receive a briefing.            Critically low fuel moistures will contribute to rapid fire growth and rates of spread.            Expect spotting in receptive fuel beds adjacent to active burning.            Evaluate unburned islands for re-burn potential.            Identify escape routes, temporary refuge areas and safety zones.</p>
ALL	<b>GRAVITY HAZARDS: ROLLING DEBRIS AND SNAGS/ WEAKENED TREES</b>	<p>The ones that haven't fallen yet; look up, look around <b>Identify Hazard Trees.</b>            Drought-Stressed Trees are weakened – dry soils provide no support for root systems!            Communicate the hazard. Flag and make proper notifications.            Use equipment to mitigate hazard trees where feasible.            Do not fall trees out of your certification level. Evaluate wind and lean prior to cutting.            Be alert for falling rocks and debris along roadways and cut banks.</p>
ALL	<b>FATIGUE, HEAT &amp; DEHYDRATION</b>	<p>Don't underestimate the task at hand. Adhere to work/rest cycles for all tasks.            Watch for stack-effect of fatigue and exhaustion.            Be alert for signs of fatigue and distractions; remain engaged.  <b>Drink water</b> before, during and after shifts, up to 1.5 gal. per shift.            Review Heat Related Emergencies (IRPG Pg. 109). Seek shade when you can.</p>
ALL	<b>MOP UP AND PATROL/ ASH PITS</b>	<p>Use all required PPE at <b>ALL</b> times. Be alert for overhead hazards and uneven terrain.            Scout out work areas when under tree canopy and assess risk vs. gain.            White ash may indicate deep ash pits and root cavities with hot coals. Use caution while travelling through the burn. Watch for vehicles along roadways.</p>
ALL	<b>STEEP TERRAIN</b>	<p>Watch your footing while hiking in steep terrain.            Expect loose/rolling debris, particularly in areas that fire has burned away surface fuels.            Maintain <b>Situational Awareness</b>. Reassess Tree hazards frequently in the work area.            Watch for trees and rocks falling across roads and fire lines.            Avoid working below other personnel and equipment when possible.</p>
ALL	<b>BEARS, REPTILES &amp; BEES</b>	<p>This incident area is home to RATTLESNAKES, bees, and wasps.            Be bear aware: secure food, trash and sleeping locations to deter possible interactions.            Be cautious with other animals and the hazards associated with each.</p>
ALL	<b>AIRCRAFT OPERATIONS</b>	<p>Monitor air-to-ground frequencies; they are your eyes in the sky.            Use air-to-ground frequency to communicate with aircraft.            Use clear, concise statements when directing aircraft; <b>CLEAR THE LINE!</b>            Do not rely on aircraft: visibility &amp; priorities can change quickly.</p>
Incident Name: <b>CALDOR INCIDENT WEST ZONE</b>		Prepared by: <b>Jen Rabuck, SOF1</b>  <b>Jason Novak, SOF1</b> 
		OPERATIONAL PERIOD <b>0700 - 0700</b>



### Employee Response Action Plan

#### COVID-19 Positive Test or COVID-19 Positive Clinical Symptoms Presentation

- COVID 19 Symptoms: Cough, SOB, Fever or afebrile, Chills, Muscle Pain, Sore throat, Loss of taste/smell
- Employee informs Company Officer and Strike Team Leader of presumed/confirmed COVID-19 symptoms.
- Employee advised to seek evaluation by Medical Unit and CAL MAT or base camp medical unit.
- Crew initiates cleaning measures. Mask, safety glasses, gloves worn. (If needed, LOGS will assist)
- Medical Unit to notified IC, Liaison, Safety and Logistics ASAP. Medical Unit will notify COVID-19 Public Health Officer and determine need for testing and locations.

### Incident Action Plan

- Company Officer / Strike Team Leader notified of personnel with COVID-19 positive test or symptom.
- Medical Unit evaluates individual(s) and need for care and evaluation.
- IC, Liaison, Safety and Logistics notification made to determine course of incident evaluation and response.
- Line Chief, Agency Administrator, and Region Office updated upon notification

### Facilities Response

- Medical and Safety notified
- Incident Notification
- Disinfection plan initiated.
- Resource Status Evaluated

### Medical Evaluation & Contact Tracing

- Personnel interviewed by Medical Unit . List of Positive contacts made in the last 5 days acquired. All Exposed are required to wear surgical mask, self monitor for Fever/Resp symptoms for up to 14 days (exposed personnel are subject to COVID-19 testing)
- Home Unit / Department utilized and retrospective tracking of Positive COVID-19 personnel inter-actions are identified within the last 5 days.
- Home Unit / Department updated by Company Officer / Strike Team Leader.
- Public Health Department is contacted and updated by IC or Designated Representative.
- Positive COVID-19 Employees w/symptoms will need to be evaluated by Health Department conducting testing, prior to returning to assignment.
- Positive COVID-19 Employees w/o symptoms may be required to be evaluated and resource status will be reviewed prior to returning to assignment.



## ***DEMOBILIZATION SAFETY MESSAGE***

We would like to thank you for your assistance. We wish you safe travels home or to your next assignment. Below are a few reminders to make your trip safer:

- Conduct walk around before driving
- Check for and secure all loose items (ie: tools, hose, and packs)
- Wear seat belts at all times
- Monitor all drivers for fatigue,
  - Switch drivers regularly if possible
  - Find a safe place to stop, exit the vehicle and stretch
  - If all else fails, stop and take a short rest to revitalize
- Obey Posted Speed Limits
- Ensure Personnel have adequate nutrition and hydration for the trip
- Be prepared for the next incident

Thank you again for your hard work!

Jason Novak SOF1

Jen Rabuck SOF1





## Human Resources Message

Caldor Fire  
September 7, 2021

# Reporting Harassment

Harassment, or other forms of inappropriate misconduct, such as bullying, intimidation, etc., can sometimes go unreported. Employees may not know what to report, how to report, or who to report to. If this is case, please come talk to us, and we'll help you out.

But there are other reasons inappropriate behavior may go unreported, including employees being fearful of:

- losing their job
- being demoted
- being denied a raise or promotion
- being treated differently
- not being believed

While the above is understandable, we are fully committed to maintaining a policy of zero tolerance for these types of behaviors that are toxic to the work environment.

We can address issues here on the incident, and we can also follow up with your home units to ensure the behaviors are addressed once you demob, but we can't do anything about issues we aren't aware of. So please, if you see something, say something.



# ASSIGNMENT LIST (ICS 204 WF)

CONTROLLED UNCLASSIFIED  
INFORMATION//BASIC

<b>1. Incident Name:</b> <b>Caldor Incident - West Zone</b>	<b>2. Operational Period:</b> Date From: 09/07/21    Date To: 09/08/21 Time From: 0700    Time To: 0700	<b>3. Branch</b> <b>Division</b> <b>I</b> <b>A / D</b>
<b>4. Operations Personnel:</b>		Page 1 of 1


Operations Section Chief: <b>E. Schwab / B. Monday</b> Branch Director: Division/Group Supervisor: <b>L. Stacher / J. Scofield (T)</b>	Night Ops: <b>J. Marsh / L. Monsen (T)</b> Branch Safety: <b>R. Frawley</b> Air Attack:
--	---

5. Resources Assigned:	** Resources Below in Bold are 12 Hour **						
Resource Identifier	ALS	LWD	Leader	Personnel	Request #	Hours	Reporting Location
STA LAC 1133A	X		T. Espy	22	E-20517	0700-0700	DP-28
STA LOB 1321A			D. Curry	18	E-20519	0700-0700	DP-28
STA XSM 2275A	X		M. Samson	21	E-20522	0700-0700	DP-28
STC MVU 9330C			J. Clays	16	E-20543	0700-0700	DP-28
STC AEU 9272C		9/13	J. Agustin	18	E-20896	0700-0700	DP-28
T/F XSJ 4178 (3,3,3,3)		9/6	D. Ingram	19	E-20240	0700-0700	DP-28
<b>T/F Pioneer (3,6,6,6,6,7)</b>		<b>9/7</b>	<b>K. Earl</b>		<b>E-9422</b>	<b>0700-1900</b>	<b>DP-28</b>
<b>CRW PVT C-30</b>		<b>9/14</b>	<b>C. Valentine</b>	20	<b>C-30</b>	<b>0700-1900</b>	<b>DP-28</b>
<b>W/T PIO 38</b>			<b>A. Pedro</b>	1	<b>E-20304</b>	<b>0700-1900</b>	<b>DP-28</b>
W/T PVT E-20013			E. Molina	2	E-20013	0700-0700	DP-28
W/T PVT E-20174			J. Buchanan	2	E-20174	0700-0700	DP-28

**6. Work Assignments:**  
Mop Up 300' or 100%.  
Pull hose lays and back haul trash.

**7. Special Instructions:**  
  
BLS AMB 572

8. Communications							
Name	Ch	Function	Rx Freq	Rx Tone	Tx Freq	Tx Tone	Notes
COMMAND: Please refer to Communications Plan.							
VTAC11	8	TACTICAL	151.1375N	156.7	151.1375N	156.7	
A/G TAC	14	AIR TO GROUND	164.1375N		164.1375N		
CALCORD	15	MEDICAL	156.0750N	156.7	156.0750N	156.7	MEDICAL COORDINATION
GUARD 3	16	EMERGENCY	168.6250N		168.6250N	110.9	EMERGENCY USE ONLY

**9. Prepared by: Name:** M. Thomas    RESL    24 Hr Shift: 118  
Signature:     12 Hr Shift: 21  
Date/Time: 9/6/2021 2200    Total: 139





# ASSIGNMENT LIST (ICS 204 WF)

CONTROLLED UNCLASSIFIED  
INFORMATION//BASIC

<b>1. Incident Name:</b>	<b>2. Operational Period:</b>	<b>3. Branch</b>	<b>Division</b>
<b>Caldor Incident - West Zone</b>	Date From: 09/07/21      Date To: 09/08/21 Time From: 0700              Time To: 0700	<b>X</b>	<b>H</b>
<b>4. Operations Personnel:</b>		Page 1 of 1	Hotel

Operations Section Chief: <b>E. Schwab / B. Monday</b> Branch Director: <b>M. Martinez (12) / M. League (PM)</b> Division/Group Supervisor: <b>M. Watson</b>	Night Ops: <b>J. Marsh / L. Monsen (T)</b> Branch Safety: <b>W. Frederick (12) / G. Illingworth (T)</b> Air Attack:
--	---

5. Resources Assigned:	** Resources Below in Bold are 12 Hour **							
Resource Identifier	ALS	LWD	Leader	Personnel	Request #	Hours	Reporting Location	
STA XRI 6050A	X		S. Wilson	21	E-21167	0700-0700	DP-21	
STC RRU 9311C			M. Scoville	17	E-20897	0700-0700	DP-21	
STC XCZ 2326C	X		J. McNeil	22	E-20039	0700-0700	DP-21	
T/F OES 5808 (1,1,1,1,6)	X		T. Semonious	18	E-20064	0700-0700	DP-21	
T/F XMN 6175 (1,3,3,6,W/T)			R. Nalder	18	E-21213	0700-0700	DP-21	
<b>T/F CALDOR 9 (3,4,4,6,6)</b>		<b>9/9</b>	<b>P. Sten Cada</b>	16	<b>E-9244</b>	<b>0700-1900</b>	<b>DP-21</b>	
<b>CRW PVT C-44</b>		<b>9/8</b>	<b>S. Lewis</b>	20	<b>C-44</b>	<b>0700-1900</b>	<b>DP-21</b>	
W/T PVT E-20003			B. Bedell	2	E-20003	0700-0700	DP-21	
<b>W/T PVT E-20347</b>			<b>B. Fetzer</b>	1	<b>E-20347</b>	<b>0700-1900</b>	<b>DP-21</b>	
W/T PVT E-20564		9/6	A. D'angelo	2	E-20564	0700-0700	DP-21	
<b>FALM PVT O-20485</b>			<b>J. Hagerty</b>	2	<b>O-20485</b>	<b>0700-1900</b>	<b>DP-21</b>	


**6. Work Assignments:**  
 Fall Hazard Trees.  
 Mop Up 150 feet or 100%.  
 Pull hose lays and back haul trash.

**7. Special Instructions:**  
 REAF: J. Mabe / M. Santora

REMS 18 (12) / ALS AMB 621 / ALS AMB 4 / BLS AMB 572 / {FEMP M. McCarthy (12) / FEMT D. Prietto (12)} / {FEMP W. Montgomery (12) / FEMT E. Ferreira (12)}

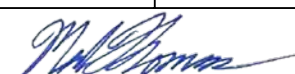
**8. Communications**

Name	Ch	Function	Rx Freq	Rx Tone	Tx Freq	Tx Tone	Notes
COMMAND: Please refer to Communications Plan.							
CDF T26	10	TACTICAL	159.2925N	192.8	159.2925N	192.8	
A/G TAC	14	AIR TO GROUND	164.1375N		164.1375N		
CALCORD	15	MEDICAL	156.0750N	156.7	156.0750N	156.7	MEDICAL COORDINATION
GUARD 3	16	EMERGENCY	168.6250N		168.6250N	110.9	EMERGENCY USE ONLY

**9. Prepared by: Name:** M. Thomas      RESL      24 Hr Shift: 76  
 Signature:       12 Hr Shift: 39  
 Date/Time: 9/6/2021 2200      Total: 139

# ASSIGNMENT LIST (ICS 204 WF)

CONTROLLED UNCLASSIFIED  
INFORMATION//BASIC

<b>1. Incident Name:</b>		<b>2. Operational Period:</b>				<b>3. Branch</b>		<b>Division</b>	
<b>Caldor Incident - West Zone</b>		Date From: 09/07/21 Time From: 0700		Date To: 09/08/21 Time To: 0700		<b>X</b>		<b>I</b>	
<b>4. Operations Personnel:</b>						<b>Page 1 of 3</b>		<b>India</b>	
Operations Section Chief: <b>E. Schwab / B. Monday</b> Branch Director: <b>M. Martinez (12) / M. League (PM)</b> Division/Group Supervisor: <b>C. Periera (12) / J. Spindler (T)</b>				Night Ops: <b>J. Marsh / L. Monsen (T)</b> Branch Safety: <b>W. Frederick (12) / G. Illingworth (T)</b> Air Attack:					
<b>5. Resources Assigned:</b>		<b>** Resources Below in Bold are 12 Hour **</b>							
Resource Identifier	ALS	LWD	Leader	Personnel	Request #	Hours	Reporting Location		
STC SCU 9160C			C Collins	16	E-20545	0700-0700	DP-40		
STC TCU 9440C			M. Torres	17	E-20816	0700-0700	DP-40		
STC AEU 9270C			C. Placke	16	E-21210	0700-0700	DP-40		
STC XSD 6440C			K. Kremensky	22	E-20199	0700-0700	DP-40		
T/F XST 4202 (3,3,3,3,6)		9/7	D. Whipkey	17	E-20242	0700-0700	DP-40		
<b>ENG SHF 631</b>		<b>9/10</b>	<b>J. Binns</b>	3	<b>E-317</b>	<b>0700-1900</b>	<b>DP-40</b>		
<b>ENG RGF 671</b>		<b>9/13</b>	<b>K. Giardina</b>	5	<b>E-459</b>	<b>0700-1900</b>	<b>DP-40</b>		
<b>ENG EKD 1347</b>		<b>9/8</b>	<b>B. Jones</b>	4	<b>E-557</b>	<b>0700-1900</b>	<b>DP-40</b>		
<b>ENG EIC 612</b>			<b>E. Giles</b>	3	<b>E-21098</b>	<b>0700-1900</b>	<b>DP-40</b>		
<b>ENG KNF 633</b>			<b>T. CHandler</b>	5	<b>E-21102</b>	<b>0700-1900</b>	<b>DP-40</b>		
STG CZU 9174G (CDCR)		9/7	J. Pearlman	36	C-20016	0700-0700	DP-40		
STG NEU 9234G (CCC)			M. Kidwell	31	C-20012	0700-0700	DP-40		
STG AEU 9273G (CDCR)			A. Cholico	30	C-20003	0700-0700	DP-40		
CRW AEU GRB 1 (CDCR)		8/28	S. Lewindowski	11	C-5	0700-0700	DP-40		
<b>CRW CNA 513</b>				25	<b>C-20240.15</b>	<b>0700-1900</b>	<b>DP-40</b>		
<b>CRW CNA 514</b>				25	<b>C-20240.16</b>	<b>0700-1900</b>	<b>DP-40</b>		
<b>CRW CNA 515</b>				25	<b>C-20240.17</b>	<b>0700-1900</b>	<b>DP-40</b>		
<b>CRW CNA 516</b>				25	<b>C-20240.18</b>	<b>0700-1900</b>	<b>DP-40</b>		
<b>6. Work Assignments:</b>									
Construct control lines as direct as possible.									
Hold fire in planned lines.									
Improve and hold established control lines.									
<b>7. Special Instructions:</b>									
REMS 18 (12) / ALS AMB 621 / ALS AMB 4 / BLS AMB 572 / {FEMP M. McCarthy (12) / FEMT D. Prietto (12)} / {FEMP W. Montgomery (12) / FEMT E. Ferreira (12)}									
REAF: J. Mabe / M. Santora									
<b>8. Communications</b>									
Name	Ch	Function	Rx Freq	Rx Tone	Tx Freq	Tx Tone	Notes		
COMMAND: Please refer to Communications Plan.									
CDF T27	11	TACTICAL	159.3075N	192.8	159.3075N	192.8			
A/G TAC	14	AIR TO GROUND	164.1375N		164.1375N				
CALCORD	15	MEDICAL	156.0750N	156.7	156.0750N	156.7	MEDICAL COORDINATION		
GUARD 3	16	EMERGENCY	168.6250N		168.6250N	110.9	EMERGENCY USE ONLY		
<b>9. Prepared by: Name:</b>		M. Thomas		RESL		24 Hr Shift:		174	
Signature:						12 Hr Shift:		120	
<b>ICS 204</b>		Date/Time:		9/6/2021 2200		Total:		316	

# ASSIGNMENT LIST (ICS 204 WF)

CONTROLLED UNCLASSIFIED  
INFORMATION//BASIC

<b>1. Incident Name:</b> <b>Caldor Incident - West Zone</b>	<b>2. Operational Period:</b> Date From: 09/07/21    Date To: 09/08/21 Time From: 0700    Time To: 0700	<b>3. Branch</b> <b>Division</b>  <b>X</b> <b>I</b>  <b>Page 2 of 3</b> <b>India</b>
--	---	--

<b>4. Operations Personnel:</b>	
Operations Section Chief: <b>E. Schwab / B. Monday</b> Branch Director: <b>M. Martinez (12) / M. League (PM)</b> Division/Group Supervisor: <b>C. Periera (12) / J. Spindler (T)</b>	Night Ops: <b>J. Marsh / L. Monsen (T)</b> Branch Safety: <b>W. Frederick (12) / G. Illingworth (T)</b> Air Attack:

<b>5. Resources Assigned:</b>	<b>** Resources Below in Bold are 12 Hour **</b>						
Resource Identifier	ALS	LWD	Leader	Personnel	Request #	Hours	Reporting Location
DOZ NEU 2346			D. Minor	2	E-20667	0700-0700	DP-40
DOZ PVT E-101			P. Bower	2	E-101	0700-0700	DP-40
DOZ PVT E-20025			N. Edwards	2	E-20025	0700-0700	DP-40
DOZ PVT E-20257			B. Hendrix	3	E-20257	0700-0700	DP-40
<b>W/T PVT E-20007</b>			<b>R. Carvalho</b>	1	<b>E-20007</b>	<b>0700-1900</b>	<b>DP-40</b>
<b>W/T PVT E-20010</b>			<b>T. Silva</b>	1	<b>E-20010</b>	<b>0700-1900</b>	<b>DP-40</b>
W/T PVT E-20016			G. Orduno	3	E-20016	0700-0700	DP-40
<b>W/T PVT E-20286</b>			<b>J. Baugh</b>	1	<b>E-20286</b>	<b>0700-1900</b>	<b>DP-40</b>
<b>W/T PVT E-20152</b>			<b>K. Lawless</b>	1	<b>E-20152</b>	<b>0700-1900</b>	<b>DP-40</b>
W/T PVT E-20175			G. Bartlett	2	E-20175	0700-0700	DP-40
W/T PVT E-20176			R. Hurl	2	E-20176	0700-0700	DP-40
<b>W/T PVT E-20274</b>			<b>D. Escoffier</b>	1	<b>E-20274</b>	<b>0700-1900</b>	<b>DP-40</b>
W/T PVT E-20278			J. Thoene	2	E-20278	0700-0700	DP-40
W/T PVT E-20678			S. Dooling	2	E-20678	0700-0700	DP-40
<b>W/T PVT E-20680</b>			<b>D. Ginn</b>	1	<b>E-20680</b>	<b>0700-1900</b>	<b>DP-40</b>
<b>MAST PVT E-232</b>			<b>D. West</b>	2	<b>E-232</b>	<b>0700-1900</b>	<b>DP-40</b>
<b>FALM PVT O-20502</b>			<b>D. Standly</b>	2	<b>O-20502</b>	<b>0700-1900</b>	<b>DP-40</b>
<b>FALM PVT O-20772</b>			<b>J. Madison</b>	2	<b>O-20772</b>	<b>0700-1900</b>	<b>DP-40</b>

**6. Work Assignments:**  
 Construct control lines as direct as possible.  
 Hold fire in planned lines.  
 Improve and hold established control lines.

**7. Special Instructions:**  
  
 REMS 18 (12) / ALS AMB 621 / ALS AMB 4 / BLS AMB 572 / {FEMP M. McCarthy (12) / FEMT D. Prietto (12)} / {FEMP W. Montgomery (12) / FEMT E. Ferreira (12)}  
 REAF: J. Mabe / M. Santora

<b>8. Communications</b>							
Name	Ch	Function	Rx Freq	Rx Tone	Tx Freq	Tx Tone	Notes
COMMAND: Please refer to Communications Plan.							
CDF T27	11	TACTICAL	159.3075N	192.8	159.3075N	192.8	
A/G TAC	14	AIR TO GROUND	164.1375N		164.1375N		
CALCORD	15	MEDICAL	156.0750N	156.7	156.0750N	156.7	MEDICAL COORDINATION
GUARD 3	16	EMERGENCY	168.6250N		168.6250N	110.9	EMERGENCY USE ONLY

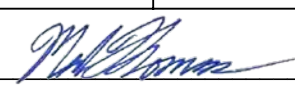
<b>9. Prepared by: Name:</b>	M. Thomas	RESL	24 Hr Shift: 18
	Signature:		12 Hr Shift: 10
<b>ICS 204</b>	Date/Time: 9/6/2021 2200		Total: 32





# ASSIGNMENT LIST (ICS 204 WF)

CONTROLLED UNCLASSIFIED  
INFORMATION//BASIC

<b>1. Incident Name:</b> <b>Caldor Incident - West Zone</b>		<b>2. Operational Period:</b> Date From: 09/07/21      Date To: 09/08/21 Time From: 0700              Time To: 0700				<b>3. Branch</b> <b>X</b>		<b>Division</b> <b>Contingency</b>	
<b>4. Operations Personnel:</b>						Page 1 of 1			
Operations Section Chief: <b>E. Schwab / B. Monday</b> Branch Director: <b>M. Martinez (12) / M. League (PM)</b> Division/Group Supervisor: <b>M. Khazaal (T)</b>					Night Ops: <b>J. Marsh / L. Monsen (T)</b> Branch Safety: <b>W. Frederick (12) / G. Illingworth (T)</b> Air Attack:				
<b>5. Resources Assigned:</b>		<b>** Resources Below in Bold are 12 Hour **</b>							
Resource Identifier	ALS	LWD	Leader	Personnel	Request #	Hours	Reporting Location		
<b>ENG TIA 696</b>		<b>9/12</b>	<b>D. Stordy</b>	4	<b>E-35</b>	<b>0700-1900</b>	<b>DP-7</b>		
<b>ENG NSS B5361</b>		<b>9/2</b>	<b>J. Gonzalez</b>	4	<b>E-20168</b>	<b>0700-1900</b>	<b>DP-7</b>		
<b>CRW PVT C-33</b>		<b>9/7</b>	<b>A. Avila</b>	20	<b>C-33</b>	<b>0700-1900</b>	<b>DP-7</b>		
<b>CRW PVT C-42</b>		<b>9/8</b>	<b>J. Miracle</b>	20	<b>C-42</b>	<b>0700-1900</b>	<b>DP-7</b>		
DOZ AEU 2741			J. Cook	2	E-13	0700-0700	DP-7		
DOZ PVT E-20531			C. Enriques	2	E-20531	0700-0700	DP-7		
DOZ PVT E-20533			S. Hill	2	E-20533	0700-0700	DP-7		
DOZ PVT E-20540			K. Van Pelt	3	E-20540	0700-0700	DP-7		
<b>W/T PVT E-20005</b>			<b>D. Rempel</b>	1	<b>E-20005</b>	<b>0700-1900</b>	<b>DP-7</b>		
<b>MAST PVT E-241</b>			<b>C. Johnson</b>	2	<b>E-241</b>	<b>0700-1900</b>	<b>DP-7</b>		
<b>MAST PVT E-20754</b>			<b>H. Meyer</b>	1	<b>E-20754</b>	<b>0700-1900</b>	<b>DP-7</b>		
<b>MAST PVT E-20755</b>			<b>R. Galgiani</b>	1	<b>E-20755</b>	<b>0700-1900</b>	<b>DP-7</b>		
<b>MAST PVT E-20835</b>			<b>C. Elderd</b>	1	<b>E-20835</b>	<b>0700-1900</b>	<b>DP-7</b>		
<b>CHIP PVT E-20611</b>			<b>M. Nieves</b>	2	<b>E-20611</b>	<b>0700-1900</b>	<b>DP-7</b>		
<b>CHIP PVT E-20612</b>			<b>D. Mills</b>	2	<b>E-20612</b>	<b>0700-1900</b>	<b>DP-7</b>		
<b>TFLD LEWIS</b>			<b>R. Lewis</b>	1	<b>O-20432</b>	<b>0700-1900</b>	<b>DP-7</b>		
<b>TFLD GOYETTE</b>			<b>M. Goyette</b>	1	<b>O-20663</b>	<b>0700-1900</b>	<b>DP-7</b>		
<b>6. Work Assignments:</b> Construct contingency line from Spring Valley to Fresh Pond.									
<b>7. Special Instructions:</b> Work with DIV I in Dark Lake Area.  REAF: J. Mabe / M. Santora REMS 18 (12) / ALS AMB 621 / ALS AMB 4 / BLS AMB 572 / {FEMP M. McCarthy (12) / FEMT D. Prietto (12)} / {FEMP W. Montgomery (12) / FEMT E. Ferreira (12)}									
<b>8. Communications</b>									
Name	Ch	Function	Rx Freq	Rx Tone	Tx Freq	Tx Tone	Notes		
COMMAND: Please refer to Communications Plan.									
A/G TAC	14	AIR TO GROUND	164.1375N		164.1375N				
CALCORD	15	MEDICAL	156.0750N	156.7	156.0750N	156.7	MEDICAL COORDINATION		
GUARD 3	16	EMERGENCY	168.6250N		168.6250N	110.9	EMERGENCY USE ONLY		
<b>9. Prepared by: Name:</b>		M. Thomas		RESL		24 Hr Shift:		9	
		Signature: 				12 Hr Shift:		55	
<b>ICS 204</b>		Date/Time: 9/6/2021 2200				Total:		69	

# ASSIGNMENT LIST (ICS 204 WF)

CONTROLLED UNCLASSIFIED  
INFORMATION//BASIC

<b>1. Incident Name:</b>	<b>2. Operational Period:</b>	<b>3. Branch</b>	<b>Division</b>
<b>Caldor Incident - West Zone</b>	Date From: 09/07/21      Date To: 09/08/21 Time From: 0700              Time To: 0700	<b>XX</b>	<b>N / P</b>
<b>4. Operations Personnel:</b>		<b>Page 1 of 2</b>	

Operations Section Chief: <b>E. Schwab / B. Monday</b> Branch Director: <b>R. Engler / D. Bakken (T)</b> Division/Group Supervisor: <b>B. Muenzer / W. Almand (12)</b>	Night Ops: <b>J. Marsh / L. Monsen (T)</b> Branch Safety: <b>M. Cobb / J. Williams (12)</b> Air Attack:
--	---

5. Resources Assigned:	** Resources Below in Bold are 12 Hour **							
Resource Identifier	ALS	LWD	Leader	Personnel	Request #	Hours	Reporting Location	
STA XSM 2276A	X		J. Pelk	22	E-20547	0700-0700	DP-16	
STA XLE 1282A	X		D. Graft	22	E-20940	0700-0700	DP-16	
STC CZU 9170C			E. Bither	17	E-20548	0700-0700	DP-16	
STC MEU 9117C			A. Leonard	22	E-20812	0700-0700	DP-16	
STC MEU 9113C			N. Deurloo	17	E-20865	0700-0700	DP-16	
<b>ENG MTF 611</b>			<b>R. Lindsley</b>	4	<b>E-21223</b>	<b>0700-1900</b>	<b>DP-16</b>	
<b>ENG CIF 671</b>		<b>9/18</b>	<b>T. Evans</b>	3	<b>E-21280</b>	<b>0700-1900</b>	<b>DP-16</b>	
STG AEU 9275G (CDCR)			D. Grandbois	33	C-20015	0700-0700	DP-16	
STG HEU 9122G (CDCR)			B. Boyd	33	C-20027	0700-0700	DP-16	
STG MEU 9114G			M. Botts	33	C-20094	0700-0700	DP-16	
CRW HUU EEL RIVER 3			S. Kirston	15	C-20096	0700-0700	DP-16	
CRW CZU MBY1 (CCC)			R. Switzer	16	C-20097	0700-0700	DP-16	
<b>CRW 2IA TETON</b>				20	<b>C-50015</b>	<b>0700-1900</b>	<b>DP-16</b>	
<b>CRW SIERRA IHC</b>				20		<b>0700-1900</b>	<b>DP-16</b>	
<b>CRW PVT C-31</b>			<b>Z. Curtis</b>	20	<b>C-31</b>	<b>0700-1900</b>	<b>DP-16</b>	
<b>CRW PVT C-41</b>		<b>9/8</b>	<b>J. Szabo</b>	20	<b>C-41</b>	<b>0700-1900</b>	<b>DP-16</b>	
<b>CRW PVT C-72</b>			<b>R. Castro</b>	20	<b>C-72</b>	<b>0700-1900</b>	<b>DP-16</b>	
DOZ LNU 1449			K. Mittlestood	1	E-50	0700-0700	DP-16	

**6. Work Assignments:**  
 Construct control lines as direct as possible.  
 Fall tress that will threaten control lines.  
 Insert hose lay to support Firing Operation.  
 Patrol.

**7. Special Instructions:**  
  
 REAF: P. Yerger / A. Speering  
 REMS 18 (12) / ALS AMB 60 / ALS AMB 2 / FEMP E. Ferreira (12) / FEMP D. Beveridge (12)

8. Communications							
Name	Ch	Function	Rx Freq	Rx Tone	Tx Freq	Tx Tone	Notes
COMMAND: Please refer to Communications Plan.							
CDF T28	8	TACTICAL	151.1825N	192.8	151.1825N	192.8	
A/G TAC	14	AIR TO GROUND	164.1375N		164.1375N		
CALCORD	15	MEDICAL	156.0750N	156.7	156.0750N	156.7	MEDICAL COORDINATION
GUARD 3	16	EMERGENCY	168.6250N		168.6250N	110.9	EMERGENCY USE ONLY

<b>9. Prepared by: Name:</b>	M. Thomas	RESL	24 Hr Shift: 230
	Signature:		12 Hr Shift: 107
<b>ICS 204</b>	Date/Time: 9/6/2021 2200		Total: 338

# ASSIGNMENT LIST (ICS 204 WF)

CONTROLLED UNCLASSIFIED  
INFORMATION//BASIC

<b>1. Incident Name:</b>	<b>2. Operational Period:</b>	<b>3. Branch</b>	<b>Division</b>
<b>Caldor Incident - West Zone</b>	Date From: 09/07/21      Date To: 09/08/21 Time From: 0700              Time To: 0700	<b>XX</b>	<b>N / P</b>
<b>4. Operations Personnel:</b>		<b>Page 2 of 2</b>	

Operations Section Chief: <b>E. Schwab / B. Monday</b> Branch Director: <b>R. Engler / D. Bakken (T)</b> Division/Group Supervisor: <b>B. Muenzer / W. Almand (12)</b>	Night Ops: <b>J. Marsh / L. Monsen (T)</b> Branch Safety: <b>M. Cobb / J. Williams (12)</b> Air Attack:
--	---

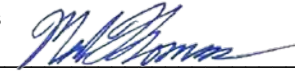
5. Resources Assigned:	** Resources Below in Bold are 12 Hour **							
Resource Identifier	ALS	LWD	Leader	Personnel	Request #	Hours	Reporting Location	
DOZ AEU 2744			J. Emmerson	2	E-20845	0700-0700	DP-16	
<b>W/T PVT E-388</b>			<b>J. Richardson</b>	1	<b>E-388</b>	<b>0700-1900</b>	<b>DP-16</b>	
<b>W/T PVT E-20153</b>			<b>M. Greer</b>	1	<b>E-20153</b>	<b>0700-1900</b>	<b>DP-16</b>	
W/T PVT E-20169			R. Zeb	2	E-20169	0700-0700	DP-16	
<b>W/T PVT E-20172</b>			<b>M. Kempf</b>	2	<b>E-20172</b>	<b>0700-1900</b>	<b>DP-16</b>	
<b>W/T PVT E-20178</b>			<b>K. Gray</b>	1	<b>E-20178</b>	<b>0700-1900</b>	<b>DP-16</b>	
<b>W/T PVT E-20277</b>			<b>D. Castle</b>	1	<b>E-20277</b>	<b>0700-1900</b>	<b>DP-16</b>	
W/T PVT E-20302			R. Leaverton	2	E-20302	0700-0700	DP-16	
W/T PVT E-20324			R. Gold	2	E-20324	0700-0700	DP-16	
<b>W/T PVT E-20706</b>			<b>S. Krautheim</b>	1	<b>E-20706</b>	<b>0700-1900</b>	<b>DP-16</b>	
<b>W/T PVT E-20707</b>			<b>M. Abplanalp</b>	2	<b>E-20707</b>	<b>0700-1900</b>	<b>DP-16</b>	
<b>FALM PVT O-20484</b>			<b>J. Moglia</b>	2	<b>O-20484</b>	<b>0700-1900</b>	<b>DP-16</b>	
<b>FALM PVT O-20486</b>			<b>R. Peterson</b>	1	<b>O-20486</b>	<b>0700-1900</b>	<b>DP-16</b>	
<b>FALM PVT O-20773</b>			<b>Barry</b>	2	<b>O-20773</b>	<b>0700-1900</b>	<b>DP-16</b>	
<b>TFLD MCLEOD</b>			<b>S. McLeod</b>	1	<b>O-20436</b>	<b>0700-1900</b>	<b>DP-16</b>	
<b>TFLD JELINEK</b>				1	<b>O-20638</b>	<b>0700-1900</b>	<b>DP-16</b>	

**6. Work Assignments:**  
 Construct control lines as direct as possible.  
 Fall tress that will threaten control lines.  
 Insert hose lay to support Firing Operation.  
 Patrol.

**7. Special Instructions:**  
  
 REAF: P. Yerger / A. Speering  
 REMS 18 (12) / ALS AMB 60 / ALS AMB 2 / FEMP E. Ferreira (12) / FEMP D. Beveridge (12)

**8. Communications**

Name	Ch	Function	Rx Freq	Rx Tone	Tx Freq	Tx Tone	Notes
COMMAND: Please refer to Communications Plan.							
CDF T28	8	TACTICAL	151.1825N	192.8	151.1825N	192.8	
A/G TAC	14	AIR TO GROUND	164.1375N		164.1375N		
CALCORD	15	MEDICAL	156.0750N	156.7	156.0750N	156.7	MEDICAL COORDINATION
GUARD 3	16	EMERGENCY	168.6250N		168.6250N	110.9	EMERGENCY USE ONLY

**9. Prepared by: Name:** M. Thomas      RESL      24 Hr Shift: 4  
 Signature:       12 Hr Shift: 14  
 ICS 204      Date/Time: 9/6/2021 2200      Total: 24



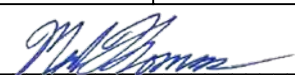






# ASSIGNMENT LIST (ICS 204 WF)

CONTROLLED UNCLASSIFIED  
INFORMATION//BASIC

<b>1. Incident Name:</b> <b>Caldor Incident - West Zone</b>		<b>2. Operational Period:</b> Date From: 09/07/21      Date To: 09/08/21 Time From: 0700              Time To: 0700				<b>3. Branch</b> <b>Division</b>  <b>ICP Staging</b>	
<b>4. Operations Personnel:</b>						Page 1 of 1	
Operations Section Chief: <b>E. Schwab / B. Monday</b> Branch Director: Division/Group Supervisor: <b>D. Hames (12) / R. McMillen (12)</b>				Night Ops: <b>J. Marsh / L. Monsen (T)</b> Branch Safety: Air Attack:			
<b>5. Resources Assigned:</b>		<b>** Resources Below in Bold are 12 Hour **</b>					
Resource Identifier	ALS	LWD	Leader	Personnel	Request #	Hours	Reporting Location
T/F XSM 2278 (1,1,1,1,3)	X	9/10	G. Kurtz	22	E-20198	0700-0700	2350 Carson Rd.
<b>ENG UAF 302</b>		<b>9/7</b>	<b>W. Deleo</b>	6	<b>E-315</b>	<b>0700-1900</b>	<b>2350 Carson Rd.</b>
<b>ENG DRC 33</b>			<b>C. Bartlett</b>	5	<b>E-21224</b>	<b>0700-1900</b>	<b>2350 Carson Rd.</b>
<b>ENG CO-PLAX 33</b>			<b>C. Cox</b>	3	<b>E-21263</b>	<b>0700-1900</b>	<b>2350 Carson Rd.</b>
<b>ENG BIA 511</b>		<b>9/18</b>	<b>C. Gallineaux</b>	3	<b>E-21273</b>	<b>0700-1900</b>	<b>2350 Carson Rd.</b>
<b>ENG ELH 327</b>		<b>9/16</b>	<b>C. Anthis</b>	4	<b>E-20653</b>	<b>0700-1900</b>	<b>2350 Carson Rd.</b>
<b>ENG PVT E-295</b>		<b>9/9</b>	<b>L. Wallace</b>	3	<b>E-295</b>	<b>0700-1900</b>	<b>2350 Carson Rd.</b>
<b>ENG PVT E-21276</b>		<b>9/13</b>	<b>L. Pino</b>	3	<b>E-21276</b>	<b>0700-1900</b>	<b>2350 Carson Rd.</b>
DOZ PVT E-20179			J. Snyder	3	E-20179	0700-0700	2350 Carson Rd.
DOZ PVT E-20258			T. Wanzer	2	E-20258	0700-0700	2350 Carson Rd.
DOZ PVT E-20260			E. Herl	2	E-20260	0700-0700	2350 Carson Rd.
DOZ PVT E-20539			C. Klauer	3	E-20539	0700-0700	2350 Carson Rd.
<b>DOZ PVT E-20702</b>			<b>R. Cecil</b>	2	<b>E-20702</b>	<b>0700-1900</b>	<b>2350 Carson Rd.</b>
<b>DOZ PVT E-20832</b>			<b>E. Spratt</b>	1	<b>E-20832</b>	<b>0700-1900</b>	<b>2350 Carson Rd.</b>
DOZ PVT E-20943			J. Shannon	2	E-20943	0700-0700	2350 Carson Rd.
<b>GRD PVT E-20045</b>			<b>L. Drew</b>	1	<b>E-20045</b>	<b>0700-1900</b>	<b>2350 Carson Rd.</b>
<b>W/T PVT E-20011</b>			<b>D. Sasser</b>	1	<b>E-20011</b>	<b>0700-1900</b>	<b>2350 Carson Rd.</b>
<b>W/T PVT E-20012</b>			<b>R. Alvarez</b>	1	<b>E-20012</b>	<b>0700-1900</b>	<b>2350 Carson Rd.</b>
<b>6. Work Assignments:</b> Maintain 3 minute response time. Monitor command frequencies.							
<b>7. Special Instructions:</b> Reporting location 2350 Carson Ave. Placerville CA. Top 5 Engines in <i>ITALICS</i> have been Identified for USFS IA.  READ A. Brown / A. Bonskowski							
<b>8. Communications</b>							
Name	Ch	Function	Rx Freq	Rx Tone	Tx Freq	Tx Tone	Notes
COMMAND: Please refer to Communications Plan.							
CALCORD	15	MEDICAL	156.0750N	156.7	156.0750N	156.7	MEDICAL COORDINATION
GUARD 3	16	EMERGENCY	168.6250N		168.6250N	110.9	EMERGENCY USE ONLY
<b>9. Prepared by: Name:</b>		M. Thomas	RESL			24 Hr Shift: 9	
		Signature: 				12 Hr Shift: 33	
<b>ICS 204</b>		Date/Time: 9/6/2021 2200				Total: 67	



**Division/Group Assignment List (ICS 204 WF)**  
Controlled Unclassified Information//Basic

**EAST ZONE**

<b>1. Incident Name:</b>			<b>3.</b>			
CALDOR INCIDENT EAST ZONE			<b>Branch:</b>		<b>Division/Group</b>	
<b>2. Operational Period:</b>			<b>XII</b>		<b>AA</b>	
Date/Time From: 09/07/2021 0700	TUE	Date/Time To: 09/08/2021 0700				
<b>4. Operations Personnel</b>						
<b>OPERATIONS CHIEF</b>		KYLE JACOBSON, BRIAN NEWMAN JOE GONZALES (T)		<b>BRANCH DIRECTOR</b>		PAT LAENG
<b>DIVISION/GROUP SUPERVISOR</b>		JOHN CHESTER K.PERREAULT (T)		<b>BRANCH SAFETY</b>		BRIAN SAVAGE
<b>5. Resources Assigned this Period</b>						
Strike Team / Task Force / Resource Designator	LWD	Leader	Number Persons	Drop Off PT./Time	Pick Up PT./Time	
**HCS1 S/T RRU 9313G C-20014	09/07	MICHAEL A DACANAY	35	ICP HEAVENLY SKI RESORT/0700	ICP HEAVENLY SKI RESORT/0700	
**HCS1 S/T SCU 9163G C-20017	09/23	MATT LANE	33	ICP HEAVENLY SKI RESORT/0700	ICP HEAVENLY SKI RESORT/0700	
**HC1 CNA 16A C-16	09/19	TRAVIS GLENN	18	ICP HEAVENLY SKI RESORT/0700	ICP HEAVENLY SKI RESORT/0700	
HC2I TAS TANANA CHIEFS C-104	09/08	GABRIEL DAVID SIMPLE	19	ICP HEAVENLY SKI RESORT/0700	ICP HEAVENLY SKI RESORT/1900	
HC2I WHITE MOUNTAIN C-107	09/08	MEKIAH SUN STANSEL	21	ICP HEAVENLY SKI RESORT/0700	ICP HEAVENLY SKI RESORT/1900	
HC2 FIRESTORM 6 C-108	09/15	GENE LOPEZ	20	ICP HEAVENLY SKI RESORT/0700	ICP HEAVENLY SKI RESORT/1900	
HC2 FRANCO 1 C-110	09/16	IGNACIO ROJAS	20	ICP HEAVENLY SKI RESORT/0700	ICP HEAVENLY SKI RESORT/1900	
SMOD CREW 25 O-335	09/10	MATTHEW A MCKURTIS	8	ICP HEAVENLY SKI RESORT/0700	ICP HEAVENLY SKI RESORT/1900	
SMOD CREW 26 O-50157				ICP HEAVENLY SKI RESORT/0700	ICP HEAVENLY SKI RESORT/1900	
SMOD RMP 32 O-50106	09/13	KEVIN RIGGS	10	ICP HEAVENLY SKI RESORT/0700	ICP HEAVENLY SKI RESORT/1900	
SMOD MID PLAINS MOD O-50107	09/18		10	ICP HEAVENLY SKI RESORT/0700	ICP HEAVENLY SKI RESORT/1900	
HEL2 HELICOPTER - T2 STANDARD - 669H A-419				ICP HEAVENLY SKI RESORT/0700	ICP HEAVENLY SKI RESORT/1900	
**S/T ENG3 CZU 9171C E-20196	09/17	R. SIMMONS	16	ICP HEAVENLY SKI RESORT/0700	ICP HEAVENLY SKI RESORT/0700	
T/F CALDOR 5 E-9249 (3,3,4,4,6)		M GAHLEY		ICP HEAVENLY SKI RESORT/0700	ICP HEAVENLY SKI RESORT/1900	
T/F NV-WID NEVADA E-396 (3,3,3,3,4,2)	09/11	SHAWN M TORRES	23	ICP HEAVENLY SKI RESORT/0700	ICP HEAVENLY SKI RESORT/1900	
ENG3 CRB 84 E-377	09/10	KARL H OLIVER	3	ICP HEAVENLY SKI RESORT/0700	ICP HEAVENLY SKI RESORT/1900	
ENG3 HART 291 E-291	09/10	R ANDERSON	3	ICP HEAVENLY SKI RESORT/0700	ICP HEAVENLY SKI RESORT/1900	
<b>8. Division/Group Communication Summary</b>						
Function	Channel	RX Frequency N/W	RX Tone/NAC	TX Frequency N/W	TX Tone/NAC	Mode
COMMAND	CMD 5	169.7500N	146.2	167.1000N	146.2	A
TACTICAL	NIFC T1	168.0500N		168.0500N		A
AIR TO GROUND	A/G CMD	167.9500N		167.9500N		
AIR TO GROUND	A/G TAC E	169.2875N		169.2875N		A
AIR TO GROUND	CALCORD	156.0750N	156.7	156.0750N	156.7	A
AIR GUARD	EMERGENCY	168.6250N		168.6250N	110.9	A
<b>9. Prepared By (Resource Unit Leader)</b>		<b>Approved By (Planning Section Chief)</b>			<b>Date</b>	<b>Time</b>
SCOTT LAZENBY (T)		JOE SCURI			09/06/2021	2200

**Division/Group Assignment List (ICS 204 WF)**  
Controlled Unclassified Information//Basic

**EAST ZONE**

<b>1. Incident Name:</b>				<b>3.</b>		
CALDOR INCIDENT EAST ZONE				<b>Branch:</b>  <b>XII</b>	<b>Division/Group</b>  <b>AA</b>	
<b>2. Operational Period:</b>						
Date/Time From: 09/07/2021 0700 TUE		Date/Time To: 09/08/2021 0700 WED				
<b>4. Operations Personnel</b>						
<b>OPERATIONS CHIEF</b>		KYLE JACOBSON, BRIAN NEWMAN JOE GONZALES (T)		<b>BRANCH DIRECTOR</b>		PAT LAENG
<b>DIVISION/GROUP SUPERVISOR</b>		JOHN CHESTER K.PERREAULT (T)		<b>BRANCH SAFETY</b>		BRIAN SAVAGE
<b>5. Resources Assigned this Period</b>						
Strike Team / Task Force / Resource Designator	LWD	Leader	Number Persons	Drop Off PT./Time	Pick Up PT./Time	
ENG3 AZ-PNF 931 E-378	09/09	AARON J STAFFORD	7	ICP HEAVENLY SKI RESORT/0700	ICP HEAVENLY SKI RESORT/1900	
ENG3 6291 E-50117	09/18	JACOB KOSCHIK	5	ICP HEAVENLY SKI RESORT/0700	ICP HEAVENLY SKI RESORT/1900	
ENG4 NATIONAL WILDLAND FIRE E-408	09/10	AUSTIN MARTIN	3	ICP HEAVENLY SKI RESORT/0700	ICP HEAVENLY SKI RESORT/1900	
ENG6 CO-RIDGWAY 1211 E-407	09/10	S. MENZ	3	ICP HEAVENLY SKI RESORT/0700	ICP HEAVENLY SKI RESORT/1900	
ENG6 TX-TXF 641 E-466	09/13	KENNETH GABRIEL UAL	4	ICP HEAVENLY SKI RESORT/0700	ICP HEAVENLY SKI RESORT/1900	
ENG6 CENTRAL WILDFIRE, INC E-21014	09/15	JOSH WARD	3	ICP HEAVENLY SKI RESORT/0700	ICP HEAVENLY SKI RESORT/1900	
ENG6 ROGUE BASIN E-21122	09/09	JORDAN MATTHEWS	2	ICP HEAVENLY SKI RESORT/0700	ICP HEAVENLY SKI RESORT/1900	
WTT2 CGS INCORPORATED E-20280	09/20	J CORLEY	1	ICP HEAVENLY SKI RESORT/0700	ICP HEAVENLY SKI RESORT/1900	
WTT2 QUALITY CONST E-20008	09/17	P INDIHOR	1	ICP HEAVENLY SKI RESORT/0700	ICP HEAVENLY SKI RESORT/1900	
WTT2 A.C. WATER SVC E-20017	09/19	B ROSE	1	ICP HEAVENLY SKI RESORT/0700	ICP HEAVENLY SKI RESORT/1900	
**WTS2 FIRELINE TRUCKING E-20177	09/18	R HURL	1	ICP HEAVENLY SKI RESORT/0700	ICP HEAVENLY SKI RESORT/0700	
WTS1 A & G E-20173	09/18	N BALDIVIEZ	1	ICP HEAVENLY SKI RESORT/0700	ICP HEAVENLY SKI RESORT/1900	
TFLD O-20431		DANIEL J MONTOYA	1	ICP HEAVENLY SKI RESORT/0700	ICP HEAVENLY SKI RESORT/1900	
TFLD O-50001	09/17	GABRIEL PEASE-MADORE	1	ICP HEAVENLY SKI RESORT/0700	ICP HEAVENLY SKI RESORT/1900	
FMOD UNDERDOG TIMBER FALLING, INC. O-232	09/23	C BROWN		ICP HEAVENLY SKI RESORT/0700	ICP HEAVENLY SKI RESORT/1900	
FMOD A & F ENTERPRISES O-234	09/11	T PAFFORD	2	ICP HEAVENLY SKI RESORT/0700	ICP HEAVENLY SKI RESORT/1900	
FMOD UNDERDOG 3 O-50086	09/17	D. RILEY	2	ICP HEAVENLY SKI RESORT/0700	ICP HEAVENLY SKI RESORT/1900	
<b>8. Division/Group Communication Summary</b>						
Function	Channel	RX Frequency N/W	RX Tone/NAC	TX Frequency N/W	TX Tone/NAC	Mode
COMMAND	CMD 5	169.7500N	146.2	167.1000N	146.2	A
TACTICAL	NIFC T1	168.0500N		168.0500N		A
AIR TO GROUND	A/G CMD	167.9500N		167.9500N		
AIR TO GROUND	A/G TAC E	169.2875N		169.2875N		A
AIR TO GROUND	CALCORD	156.0750N	156.7	156.0750N	156.7	A
AIR GUARD	EMERGENCY	168.6250N		168.6250N	110.9	A
<b>9. Prepared By (Resource Unit Leader)</b>		<b>Approved By (Planning Section Chief)</b>			<b>Date</b>	<b>Time</b>
SCOTT LAZENBY (T)		JOE SCURI			09/06/2021	2200



**Division/Group Assignment List (ICS 204 WF)**  
Controlled Unclassified Information//Basic

**EAST ZONE**

<b>1. Incident Name:</b>				<b>3.</b>		
CALDOR INCIDENT EAST ZONE				<b>Branch:</b>  <b>XV</b>	<b>Division/Group</b>  <b>QQ</b>	
<b>2. Operational Period:</b>						
Date/Time From: 09/07/2021 0700 TUE		Date/Time To: 09/08/2021 0700 WED				
<b>4. Operations Personnel</b>						
<b>OPERATIONS CHIEF</b>		KYLE JACOBSON / BRIAN NEWMAN JOE GONZALES (T)		<b>BRANCH DIRECTOR</b>		DREW GRAHAM
<b>DIVISION/GROUP SUPERVISOR</b>		MARVIN ROYBAL JAMES SEARCY (T)		<b>BRANCH SAFETY</b>		TRAVIS MOYER
<b>5. Resources Assigned this Period</b>						
Strike Team / Task Force / Resource Designator	LWD	Leader	Number Persons	Drop Off PT./Time	Pick Up PT./Time	
HC2I BLACK EAGLES 2 C-50007	09/17	G. SANTOYO-GALLEGOS	21	HEAVENLY SKI RESORT/0700	HEAVENLY SKI RESORT/1900	
HC2 PACIFIC COAST C-50003	09/17	RAMON CISNEROS	20	HEAVENLY SKI RESORT/0700	HEAVENLY SKI RESORT/1900	
ES3 S/T FKU 9430C E-20209	10/02	SETH BROWN	19	HEAVENLY SKI RESORT/0700	HEAVENLY SKI RESORT/1900	
T/F CALDOR 8 (3,3,4,4,6) E-9234		N. BRISTOL	22	HEAVENLY SKI RESORT/0700	HEAVENLY SKI RESORT/1900	
T/F OES 5811 E-21168	09/30	CASEY A WILSON	19	HEAVENLY SKI RESORT/0700	HEAVENLY SKI RESORT/1900	
ENG1 OES 390		SEE CHECK IN		HEAVENLY SKI RESORT/0700	HEAVENLY SKI RESORT/1900	
ENG1 OES 391		SEE CHECK IN		HEAVENLY SKI RESORT/0700	HEAVENLY SKI RESORT/1900	
ENG1 OES 392		SEE CHECK IN		HEAVENLY SKI RESORT/0700	HEAVENLY SKI RESORT/1900	
ENG3 FRN BE3		SEE CHECK IN		HEAVENLY SKI RESORT/0700	HEAVENLY SKI RESORT/1900	
ENG6 HAN PATROL 41		SEE CHECK IN		HEAVENLY SKI RESORT/0700	HEAVENLY SKI RESORT/1900	
ENG3 CO-BERTHOUD 3111 E-405	09/10	DREW GETTEL	4	HEAVENLY SKI RESORT/0700	HEAVENLY SKI RESORT/1900	
ENG3 WY-FRX 151 E-453	09/12	BRIAN HUTCHINSONS	4	HEAVENLY SKI RESORT/0700	HEAVENLY SKI RESORT/1900	
ENG3 UT CEDAR MTN FD 75 E-50012	09/17	PETER MANSON	4	HEAVENLY SKI RESORT/0700	HEAVENLY SKI RESORT/1900	
ENG3 J3 CONTRACTING E-515	09/10	WES WALLACE	3	HEAVENLY SKI RESORT/0700	HEAVENLY SKI RESORT/1900	
ENG6 HART 290 E-290	09/10	K. COLTON	3	HEAVENLY SKI RESORT/0700	HEAVENLY SKI RESORT/1900	
ENG6 TOP NOTCH E-467	09/10	RYAN VIGIL	3	HEAVENLY SKI RESORT/0700	HEAVENLY SKI RESORT/1900	
ENG6 GREY WILDLAND E-468	09/12	JERRY RACICOT	3	HEAVENLY SKI RESORT/0700	HEAVENLY SKI RESORT/1900	
<b>8. Division/Group Communication Summary</b>						
Function	Channel	RX Frequency N/W	RX Tone/NAC	TX Frequency N/W	TX Tone/NAC	Mode
COMMAND	CMD 67	172.0750N	146.2	162.2000N	146.2	A
TACTICAL	VFIRE 25	154.2875N	156.7	154.2875N	156.7	A
AIR TO GROUND	A/G CMD	167.9500N		167.9500N		
AIR TO GROUND	A/G TAC E	169.2875N		169.2875N		A
AIR TO GROUND	CALCORD	156.0750N	156.7	156.0750N	156.7	A
AIR GUARD	EMERGENCY	168.6250N		168.6250N	110.9	A
<b>9. Prepared By (Resource Unit Leader)</b>		<b>Approved By (Planning Section Chief)</b>		<b>Date</b>	<b>Time</b>	
DWAYNE PRESTON (T)		JOE SCURI		09/06/2021	2200	



**Division/Group Assignment List (ICS 204 WF)**  
**Controlled Unclassified Information//Basic**

**EAST ZONE**

<b>1. Incident Name:</b>			<b>3.</b>			
CALDOR INCIDENT EAST ZONE			<b>Branch:</b>		<b>Division/Group</b>	
<b>2. Operational Period:</b>			<b>XV</b>		<b>QQ</b>	
Date/Time From: 09/07/2021 0700	TUE	Date/Time To: 09/08/2021 0700				
<b>4. Operations Personnel</b>						
<b>OPERATIONS CHIEF</b>		KYLE JACOBSON / BRIAN NEWMAN JOE GONZALES (T)		<b>BRANCH DIRECTOR</b>		DREW GRAHAM
<b>DIVISION/GROUP SUPERVISOR</b>		MARVIN ROYBAL JAMES SEARCY (T)		<b>BRANCH SAFETY</b>		TRAVIS MOYER
<b>5. Resources Assigned this Period</b>						
Strike Team / Task Force / Resource Designator		LWD	Leader	Number Persons	Drop Off PT./Time	Pick Up PT./Time
WTS1 CHRIS MORRIS E-20681		09/24	CHRIS MORRIS	1	HEAVENLY SKI RESORT/0700	HEAVENLY SKI RESORT/1900
WTS2 ASAP SVC E-20015		09/19	D DIXON	1	HEAVENLY SKI RESORT/0700	HEAVENLY SKI RESORT/1900
WTS2 DAHL & SONS E-20019		09/26	MARK DAHL	1	HEAVENLY SKI RESORT/0700	HEAVENLY SKI RESORT/1900
DOZ2 BOGGS EQT E-20701		09/11	STEVE BOGGS	2	HEAVENLY SKI RESORT/0700	HEAVENLY SKI RESORT/1900
DOZ2 HARD LOGGING E-20828		09/26	LUKE HALL	2	HEAVENLY SKI RESORT/0700	HEAVENLY SKI RESORT/1900
DOZ2 NV-STO 74 E-21114		09/12	DON SNYDER	3	HEAVENLY SKI RESORT/0700	HEAVENLY SKI RESORT/1900
TFLD O-20434		09/12	DAVID BOLOGNINI	1	HEAVENLY SKI RESORT/0700	HEAVENLY SKI RESORT/1900
HEQB O-20302		09/12	DOUG LINGEN	1	HEAVENLY SKI RESORT/0700	HEAVENLY SKI RESORT/1900
FMOD CYRUS TREE SERVICE 2 O-20484		09/13	J MOGLIA	2	HEAVENLY SKI RESORT/0700	HEAVENLY SKI RESORT/1900
FAL1 A & F ENTERPRISES O-50088		09/18	ALEX BIKISH	1	HEAVENLY SKI RESORT/0700	HEAVENLY SKI RESORT/1900
FAL1 MOEN TIMBER FALLING O-50089		09/18	MICHAEL MOEN	1	HEAVENLY SKI RESORT/0700	HEAVENLY SKI RESORT/1900
<b>6. Control Operations/Work Assignments:</b>						
Utilize appropriate suppression methods to keep the fire within its current foot print while protecting life threats and impacts to infrastructure. Mop-up to the degree safe to do so and required for containment.						
<b>7. Special Instructions:</b>						
**Denotes 24 HR Shift						
<b>8. Division/Group Communication Summary</b>						
Function	Channel	RX Frequency N/W	RX Tone/NAC	TX Frequency N/W	TX Tone/NAC	Mode
COMMAND	CMD 67	172.0750N	146.2	162.2000N	146.2	A
TACTICAL	VFIRE 25	154.2875N	156.7	154.2875N	156.7	A
AIR TO GROUND	A/G CMD	167.9500N		167.9500N		
AIR TO GROUND	A/G TAC E	169.2875N		169.2875N		A
AIR TO GROUND	CALCORD	156.0750N	156.7	156.0750N	156.7	A
AIR GUARD	EMERGENCY	168.6250N		168.6250N	110.9	A
<b>9. Prepared By (Resource Unit Leader)</b>			<b>Approved By (Planning Section Chief)</b>		<b>Date</b>	<b>Time</b>
DWAYNE PRESTON (T)			JOE SCURI		09/06/2021	2200

## AIR OPERATIONS SUMMARY ICS-220

**Incident Name / Number**  
Caldor Incident - West Zone / CA-ENF-024030

**Sunrise** 6:39    **Startup** 7:09    **Cutoff** 18:51    **Sunset** 19:21

**General Remarks, Safety Notes, Hazards, Air Operations Special Equipment, etc.**  
TRACK ALL DIPSITE LOCATIONS / NUMBER OF DIPS / GALLONS TAKEN.  
TRACK ALL DROP LOCATIONS / NUMBER OF DROPS / GALLONS DROPPED  
ALL GPS DATA TO BE COLLECTED IN DEGREES, MINUTES, DECIMAL MINUTES, FORMAT.  
*AVOID Aerial Application of Retardant / Foam / Agent within 300' of Waterways, Bodies of Water, etc.  
If Retardant / Foam / Agent is Dropped Within These Areas Immediately Notify the AOB/D and Provide the Following Information: Lat / Long, Estimated Number of Gallons and a Map Detailing The Area.*

TVL	PACIFIC
38 53.36 / 119 59.41	38 50.36 / 120 24.28

Frequencies	RX	Tone	TX	Tone	AM / FM
CMD 105 (WEST)	172.4500	114.8 (T11)	166.9375	114.8 (T11)	FM
CMD 5 (EAST)	169.7500	146.2 (T5)	167.1000	146.2 (T5)	FM
A/G - TACTICAL (WEST)	164.1375		164.1375		FM
A/G - TACTICAL (EAST)	169.2875		169.2875		FM
WEST ROTOR VIC	124.0750		124.0750		AM
EAST ROTOR VIC	133.0250		133.0250		AM
AIR / GROUND - COMMAND	167.9500		167.9500		FM
AIR TACTICS	163.3375		163.3375		FM
AIR/AIR BRIEFING	126.3750		126.3750		AM
TFR	118.6250		118.6250		AM
TOLC	123.7250		123.7250		FM
DECK (PVF) (M45)	163.1000		163.1000		FM
DECK TRK	168.3500		168.3500		FM
CALCORD - MEDICAL	156.0750	156.7 (6)	156.0750	156.7 (6)	FM
AIRGUARD - Emergency Only	168.6250	110.9 (1)	168.6250	110.9 (1)	FM

### HELICOPTERS ( Use page 2 if Needed )

FAA #	Type	Make/Model	Helibase	Avail	Start	Remarks	FAA #	Type	Make/Model	Helibase	Avail	Start	Remarks
1048Y	I	S-61	PVF	0800	0800	TANK	205PT	II	BELL 205 A++	TVL	0800	0800	LONG
722HT	I	CH-54	PVF	0800	0800	TANK							
133TH	I	UH-60	PVF	0800	0800	LONG	3173U	I	S-61	M45	0800	0800	TANK
948CH	I	CH-47	PVF	0800	0800	BUCKET	473CH	I	CH-47	M45	0800	0800	BUCKET
GUARD 862	I	UH-60	MHR	1100	1100	BUCKET	669RH	I	KAMAN 1200	M45	0800	0800	LONG
GUARD 863	I	UH-60	MHR	1100	1100	BUCKET	51BH	I	UH-60	M45	0800	0800	LONG
GUARD 864	I	UH-60	MHR	1100	1100	BUCKET	715HT	I	CH-54	M45	0800	0800	TANK
GUARD 865	I	UH-60	MHR	1100	1100	BUCKET	669H	II	BELL 205 A ++	M45	0800	0800	RAPPEL/LONG
GUARD 867	I	CH-47	MHR	1100	1100	BUCKET	354E	III	A-STAR 350	M45	0800	0800	RECONBUCKET
2DH	II	BELL UH-1H	PVF	0800	0800	LONG		II	BELL 212 HP	PACIFIC	0800	0800	LONG
205TA	II	BELL 205A1	PVF	0800	0800	LONG		II					
110NW	II	UH-1H	PVF	0800	0800	BUCKET							
117DR	II	UH-1H	PVF	0800	0800	BUCKET	804PJ	I	UH-60	TRK	0800	0800	LONG
44NE	II	BELL-UH1B	PVF	0800	0800	LONG	527	II	BELL 205 ++	TRK	0800	0800	LONG
910BR	III	BELL 206 L4	PVF	0800	0800	RECONBUCKET	509	II	BELL 209	TRK	0800	0800	RECONINTEL
237BS	III	A-STAR-360	PVF	0800	0800	RECONBUCKET	14HX	III	BELL 407	TRK	0800	0800	RECONBUCKET

### FIXED WING ( Use Page 2 if Needed )

FAA #	Type	Make/Model	Base	Avail	Start	Remarks	FAA #	Type	Make/Model	Base	Avail	Start	Remarks
TBD				0800	0800	ATGS							
TBD				0800	0800	ATGS							

Time Prepared	Date Prepared	Prepared By
1830	Monday, September 6, 2021	Chance Inwood
Shutdown	Operational Period - Date	Operational Period - Time
19:51	Tuesday September 7, 2021	0700-0700
Helibase Information	TFR Information	Rescue Ship Information
Name Placerville Latitude 38 43.478 Longitude 120 45.180 Name Truckee Latitude 39 19.288 Longitude 120 8.933 Name M45 38 43.847/119 46.147	Request # A-459 Polygon: NM Altitude: 13,500 MSL Centerpoint: NOTAMS: 1/1906 Frequency 118.6250 <a href="http://tfr.faa.gov/tfr2/list.html">http://tfr.faa.gov/tfr2/list.html</a>	Day/Host Name GUARD 841 Phone 707-391-6784 Make/Model UH-60 Location RNO Request Procedure for These Aircraft: Incident Communications See Medical Plan For Additional Info

## MEDICAL PLAN (ICS 206)

<b>1. Incident Name: Caldor-West Zone</b>	<b>2. Operational Period:</b>	Date From:	9/7/21	Date To:	9/8/21
		Time From:	7:00	Time To:	7:00

<b>3. Medical Aid Stations:</b>			
Name	Location	Contact Number/Freq	Physician
CAL MAT	ICP	N/A	Yes
MERT	Growlersburg Camp	209-642-2209	Yes

<b>4. Transportation (indicate air or ground):</b>			
Ambulance Service	Location	Contact Number	Level of Service
Guard 841 24 Hr (AIR)	Reno-Tahoe INTL Airport (KRNO)	West Caldor Comm	ALS
Private Ambulances (GROUND)	All Branches	West Caldor Comm	ALS
REMS 18	All Branches	West Caldor Comm	ALS

<b>5. Hospitals:</b>							
Hospital Name	Address,	Contact Number(s)/ Frequency	Travel Time		Trauma Center	Burn Center	Helipad
	Lat & Long Helipad		Air	Ground			
Marshal Medical Center	1100 Marshal Way, Placerville	530-622-1441	5 Min	10 Min	Level 3	<input type="checkbox"/>	<input type="checkbox"/>
Sutter Amador Hospital	200 Mission Blvd, Jackson Lat 38° 21.05'N Long 120°45.85'W	209-223-7500	30 Min	1.5 Hrs	Level 4	<input type="checkbox"/>	<input checked="" type="checkbox"/>
Sutter Roseville	1 Medical Plaza Dr. Roseville Lat 38° 45.97'N Long 121° 14.87' W	916-781-1200	45 Min	3 Hrs	Level 2	<input type="checkbox"/>	<input checked="" type="checkbox"/>
Renown Regional Hospital	1155 Mill St. Reno, NV Lat 39° 31.30'N Long 119° 47.44'W	775-982-2005	45 Min	2 Hrs	Level 2	<input type="checkbox"/>	<input checked="" type="checkbox"/>
UC Davis Medical Center	2315 Stockton Blvd. Sacramento Lat 38° 33.28'N Long 121°27.35'W	916-734-5669	55 Min	1.5 Hrs	Level 1	<input checked="" type="checkbox"/>	<input checked="" type="checkbox"/>

<p><b>6. Special Medical Emergency Procedures</b></p> <p><b>Line Emergency</b> Crew Supervisor will contact Division Supervisor with patient complaint/condition and location.</p> <ul style="list-style-type: none"> <li>- Division Group Supervisor Contacts:             <ol style="list-style-type: none"> <li>1. Closest EMS resource</li> <li>2. Caldor-West Zone Communications</li> </ol> </li> <li>- Communications Unit Contacts:             <ol style="list-style-type: none"> <li>1. Ground or Air ambulance as requested.</li> <li>2. Operations</li> <li>3. Safety</li> </ol> </li> <li>- Division Supervisor or designee will serve as point of contact and run medical emergency on assigned channel.             <ol style="list-style-type: none"> <li>1. A pre-assigned tactical frequency (i.e. CALCORD) should be used for IWI and only for duration of the emergency.</li> </ol> </li> <li>- Communications Unit will clear the Command channel for emergency traffic as needed for duration of the need.</li> <li>- Medical Unit contacts             <ol style="list-style-type: none"> <li>1. Communications</li> <li>2. Operations</li> <li>3. Crew Supervisor</li> </ol> </li> </ul>	<p><b>Injury Reporting Procedures</b></p> <p><b>Nature of Injury:</b> _____</p> <p><b>Location of Patient:</b> _____</p> <p><b>Point of Contact:</b> _____</p> <p><b>Resource Needs:</b></p> <p><b>Transportation Requested by: Air</b> _____ <b>Ground</b> _____</p> <p><b>Point of Pick-Up:</b> _____</p> <p style="padding-left: 40px;"><b>Lat:</b> _____ <b>Long:</b> _____</p> <p><b>Patient Unit ID:</b> _____</p> <p><b>Is an EMT with Patient: Yes</b> _____ <b>No</b> _____</p> <p><b>Age:</b> _____ <b>Sex: Male</b> _____ <b>Female</b> _____</p> <p><b>ALL EMERGENCIES---Secure the area and identify witnesses for later investigation. Keep an accurate log of events.</b></p> <p><b>**IN CAMP EMERGENCY**</b></p> <p><b>Contact Caldor-West Zone Communications</b></p>
--	--

Check box if aviation assets are utilized for rescue. If assets are used, coordinate with Air Operations.

<b>7. Prepared by:</b>	M. Hnat	Signature:
------------------------	---------	------------

<b>8. Approved by:</b>	J. Buchmeier	Signature:
------------------------	--------------	------------

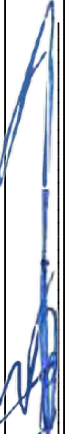
ICS 206	NIMS IAP	Date/Time:	09/06/21 1900
---------	----------	------------	---------------

# ICS 205 - INCIDENT RADIO COMMUNICATIONS PLAN

<b>1. Incident Name:</b> Caldor Incident - West Zone BRANCHES 1 / 10 : WEST Z1		<b>2. Date/Time Prepared</b> Date: 09/06/2021 Time: 1600		<b>3. Operational Period:</b> Date From: 09/07/21 Time From: 0700		Date To: 09/08/21 Time To: 0700	
--	--	--	--	---	--	------------------------------------	--

4. Communications								
Ch#	Function	Name	Assigned To	Rx Freq	Rx Tone	Tx Freq	Tx Tone	Notes
1	COMMAND	CMD 105	WEST BRANCHES	172.4500N	114.8	166.9375N	114.8	SACRAMENTO PEAK
2	COMMAND	CMD 109	WEST BRANCHES	170.3875N	114.8	162.1750N	114.8	BIG HILL
3	COMMAND	CMD 104	WEST BRANCHES	170.7625N	114.8	165.6250N	114.8	NORTH OF HWY 50 BETWEEN DP 21 AND DP 24
4	COMMAND	CMD 1	WEST BRANCHES	170.9750N	114.8	168.7000N	114.8	LEEK SPRINGS
5	COMMAND	CMD 11	WEST BRANCHES	170.6875N	114.8	166.5750N	114.8	GRIZZLY FLATS AREA
6	COMMAND	CMD 113	WEST BRANCHES	170.3125N	114.8	165.6750N	114.8	KIRKWOOD MOUNTAIN
7	COMMAND	CMD 116	WEST BRANCHES	171.0375N	114.8	162.5875N	114.8	SCOUT PEAK
8	TACTICAL	VTAC11	DIV A/D	151.1375N	156.7	151.1375N	156.7	
9	TACTICAL	VTAC13	DIV F/G	158.7375N	156.7	158.7375N	156.7	
10	TACTICAL	CDF T26	DIV H	159.2925N	192.8	159.2925N	192.8	
11	TACTICAL	CDF T27	DIV I	159.3075N	192.8	159.3075N	192.8	
12	TACTICAL	NIFC T1	DIV AA	168.0500N		168.0500N		EAST ZONE TACTICAL
13	A/G CMD	A/G CMD	ALL ZONES	167.9500N		167.9500N		
14	AIR TO GROUND	A/G TAC	WEST BRANCHES	164.1375N		164.1375N		
15	MEDICAL	CALCORD	ALL ZONES	156.0750N	156.7	156.0750N	156.7	MEDICAL COORDINATION
16	EMERGENCY	GUARD 3	ALL ZONES	168.6250N		168.6250N	110.9	EMERGENCY USE ONLY
17								
18								
19								
20	EMERGENCY	GUARD 3	ALL ZONES	168.6250N		168.6250N	110.9	EMERGENCY USE ONLY

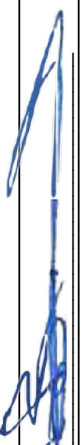
**5. Special Instructions**  
 TO CONFIRM YOU HAVE THE MOST CURRENT CLONE, ENSURE YOUR DISPLAY OF CHANNEL 16 OR 20 MATCHES CHANNEL 16 OR 20 OF THE 205 - HEIGHT AND POWER ARE KEY WHEN USING RADIOS; BE AT A HIGH POINT, USE A MOBILE IF POSSIBLE, AND USE RADIO RELAYS WHEN NEEDED

<b>6. Prepared by (Communications Unit Leader):</b> Name: J. BROOKS / B. RAPP		Signature: 
ICS 205 - CONTROLLED UNCLASSIFIED INFORMATION//BASIC		Date/Time: 09/06/21 1600



# ICS 205 - INCIDENT RADIO COMMUNICATIONS PLAN

CONTROLLED UNCLASSIFIED  
INFORMATION//BASIC

<b>1. Incident Name:</b> Caldor Incident - West Zone BRANCHES 20 / 30 : WEST Z2		<b>2. Date/Time Prepared</b> Date: 09/06/2021 Time: 1600		<b>3. Operational Period:</b> Date From: 09/07/21 Time From: 0700		Date To: 09/08/21 Time To: 0700		
<b>4. Communications</b>								
Ch#	Function	Name	Assigned To	Rx Freq	Rx Tone	Tx Freq	Tx Tone	Notes
1	COMMAND	CMD 105	WEST BRANCHES	172.4500N	114.8	166.9375N	114.8	SACRAMENTO PEAK
2	COMMAND	CMD 109	WEST BRANCHES	170.3875N	114.8	162.1750N	114.8	BIG HILL
3	COMMAND	CMD 104	WEST BRANCHES	170.7625N	114.8	165.6250N	114.8	NORTH OF HWY 50 BETWEEN DP 21 AND DP 24
4	COMMAND	CMD 1	WEST BRANCHES	170.9750N	114.8	168.7000N	114.8	LEEK SPRINGS
5	COMMAND	CMD 11	WEST BRANCHES	170.6875N	114.8	166.5750N	114.8	GRIZZLY FLATS AREA
6	COMMAND	CMD 113	WEST BRANCHES	170.3125N	114.8	165.6750N	114.8	KIRKWOOD MOUNTAIN
7	COMMAND	CMD 116	WEST BRANCHES	171.0375N	114.8	162.5875N	114.8	SCOUT PEAK
8	TACTICAL	CDF T28	DIV N/P	151.1825N	192.8	151.1825N	192.8	
9								
10	TACTICAL	CDF T30	DIV R/T/U/W	151.3925N	192.8	151.3925N	192.8	
11								
12	TACTICAL	NIFC T1	DIV AA	168.0500N		168.0500N		EAST ZONE TACTICAL
13	A/G CMD	A/G CMD	ALL ZONES	167.9500N		167.9500N		
14	AIR TO GROUND	A/G TAC	WEST BRANCHES	164.1375N		164.1375N		
15	MEDICAL	CALCORD	ALL ZONES	156.0750N	156.7	156.0750N	156.7	MEDICAL COORDINATION
16	EMERGENCY	GUARD 3	ALL ZONES	168.6250N		168.6250N	110.9	EMERGENCY USE ONLY
17								
18								
19								
20	EMERGENCY	GUARD 3	ALL ZONES	168.6250N		168.6250N	110.9	EMERGENCY USE ONLY
<b>5. Special Instructions</b>								
<p><b>TO CONFIRM YOU HAVE THE MOST CURRENT CLONE, ENSURE YOUR DISPLAY OF CHANNEL 16 OR 20 MATCHES CHANNEL 16 OR 20 OF THE 205 - HEIGHT AND POWER ARE KEY WHEN USING RADIOS; BE AT A HIGH POINT, USE A MOBILE IF POSSIBLE, AND USE RADIO RELAYS WHEN NEEDED</b></p>								
<b>6. Prepared by (Communications Unit Leader): Name: J. BROOKS / B. RAPP</b>						Signature: 		
<b>ICS 205 - CONTROLLED UNCLASSIFIED INFORMATION//BASIC</b>						NIMS IAP		
						Date/Time: 09/06/21 1600		

# ICS 205 - INCIDENT RADIO COMMUNICATIONS PLAN

CONTROLLED UNCLASSIFIED  
INFORMATION//BASIC

<b>1. Incident Name:</b> Caldor Incident AEU/ENF INITIAL ATTACK ONLY		<b>2. Date/Time Prepared</b> Date: 09/06/2021 Time: 1600		<b>3. Operational Period:</b> Date To: 09/08/21 Time To: 0700				
<b>4. Communications</b>								
Ch#	Function	Name	Assigned To	Rx Freq	Rx Tone	Tx Freq	Tx Tone	Notes
1	COMMAND	ENFADM 1		172.3250N	156.7	165.2250N	110.9	FOREST ADMIN Tone 1-Alder
2	COMMAND	ENFADM 2		172.3250N	156.7	165.2250N	123.0	FOREST ADMIN Tone 2-Leek Springs
3	COMMAND	ENFADM 4		172.3250N	156.7	165.2250N	136.5	FOREST ADMIN Tone 4-Big Hill
4	COMMAND	ENFADM 6		172.3250N	156.7	165.2250N	156.7	FOREST ADMIN Tone 6-Echo Summit
5	COMMAND	XAM CT10		154.7625N	123.0	159.1800N	107.2	AMADOR CMD Tone 10-Leek Springs
6	COMMAND	XAM CT11		154.7625N	123.0	159.1800N	114.8	AMADOR CMD Tone 11-Zion Mountain
7	COMMAND	XED CT11		155.9025N	186.2	159.2775N	114.8	EL DORADO CMD Tone 11-Union
8	COMMAND	XED CT1		155.9025N	186.2	159.2775N	110.9	EL DORADO CMD Tone 1-Alder
9	COMMAND	XED CT4		155.9025N	186.2	159.2775N	136.5	EL DORADO CMD Tone 4-Big Hill
10	TACTICAL	R5 T4		166.5500N		166.5500N		REGION 5 TAC 4
11	TACTICAL	R5 T5		167.1125N		167.1125N		REGION 5 TAC 5
12	TACTICAL	R5 T6		168.2375N		168.2375N		REGION 5 TAC 6
13	TACTICAL	CDF T2		151.1600N	192.8	151.1600N	192.8	
14	TACTICAL	CDF T8		151.3700N	192.8	151.3700N	192.8	
15	AIR TO GROUND	A/G TAC	AIR TO GROUND	164.1375N		164.1375N		
16	EMERGENCY	GUARD	EMERGENCY	168.6250N		168.6250N	110.9	EMERGENCY USE ONLY
17								
18								
19								
20	EMERGENCY	GUARD	EMERGENCY	168.6250N		168.6250N	110.9	EMERGENCY USE ONLY
<b>5. Special Instructions</b>								
TO CONFIRM YOU HAVE THE MOST CURRENT CLONE, ENSURE YOUR DISPLAY OF CHANNEL 16 OR 20 MATCHES CHANNEL 16 OR 20 OF THE 205 - HEIGHT AND POWER ARE KEY WHEN USING RADIOS; BE AT A HIGH POINT, USE A MOBILE IF POSSIBLE, AND USE RADIO RELAYS WHEN NEEDED								
<b>6. Prepared by (Communications Unit Leader):</b> Name: J. BROOKS / B. RAPP			Signature: 					
ICS 205 - CONTROLLED UNCLASSIFIED INFORMATION//BASIC			Date/Time: 09/06/21 1830					

# ICS 205 - INCIDENT RADIO COMMUNICATIONS PLAN

INFORMATION//BASIC

<b>1. Incident Name:</b> EAST CALDOR	<b>2. Date/Time Prepared</b> Date: 9//62021 Time: 1800	<b>3. Operational Period:</b> Date From: 09/07/21 Time From: 0700	<b>Date To:</b> 09/08/21 <b>Time To:</b> 0700
---	--	---	--

## 4. Communications

Ch#	Function	Name	Assigned To	Rx Freq	Rx Tone	Tx Freq	Tx Tone	Notes
1	COMMAND	CMD 5	EAST BRANCHES	169.7500N	146.2	167.1000N	146.2	MONUMENT PK LINKED W/ C93,C67 ICP
2	COMMAND	CMD 93	EAST BRANCHES	166.6875N	146.2	162.9375N	146.2	SCOUT LINKED W/C5,C67 BACK TO ICP
3	COMMAND	CMD 67	EAST BRANCHES	172.0750N	146.2	162.2000N	146.2	KIRKWOOD MT.,LINKED W/C5,C93
4	COMMAND							
5	COMMAND							
6	COMMAND	CMD 116	WEST BRANCHES	171.0375N	114.8	162.6875N	114.8	WEST COMMUNICATION
7	TACTICAL	NIFC T1	DIV AA	168.0500N		168.0500N		DIV AA/PP
8	TACTICAL	NIFC T6	DIV DD	166.7750N		166.7750N		NIGHT DIV DD
9	TACTICAL	NIFC T3	COLD GRP.DIV MM	168.6000N		168.6000N		NIGHT MM
10	TACTICAL	NIFC T7	GROUP SURGE, CHRISTMAS	168.2500N		168.2500N		
11	TACTICAL	VFIRE 24	ANGOR GRP., DIV PP	154.2725N	156.7	154.2725N	156.7	
12	TACTICAL	VFIRE 25	PIONEER GRP, DIV QQ	154.2875N	156.7	154.2875N	156.7	CONTINGENCY, NIGHT SURGE GROUP
13	A/G CMD	A/G CMD	ALL ZONES	167.9500N		167.9500N		
14	AIR TO GROUND	A/G TACE	EAST BRANCHES	169.2875N		169.2875N		
15	COORDINATION	CALCORD	ALL BRANCHES	156.0750N	156.7	156.0750N	156.7	MEDICAL COORDINATION
16	EMERGENCY	GUARD 3	ALL BRANCHES	168.6250N		168.6250N	110.9	EMERGENCY USE ONLY
17								
18								
19								
20	EMERGENCY	GUARD 3	ALL BRANCHES	168.6250N		168.6250N	110.9	

## 5. Special Instructions

**EAST COMMUNICATION 208-850-8987, OR 208-850-2701**

<b>6. Prepared by (Communications Unit Leader):</b> Name: SAL BONILLA JR, K.JANES,T.MAGUIRE	<b>Signature:</b>	<b>Date/Time:</b> 09/06/21 1800
<b>ICS 205 - CONTROLLED UNCLASSIFIED INFORMATION//BASIC</b>		



# **Caldor Incident West Ground Support**

## **Ground support / Demob Inspections**

**2441 headington Rd.**

**Placerville, CA 95667**

### **Fuel Locations**

#### **ICP-Diesel & Gas**

**Ray Lawyer Drive X Fair Lane  
Follow signage to Fuel entrance**

#### **Card Lock**

**Dawson Oil Company  
321 Pleasant Valley Rd  
Diamond Springs, CA 95619**

#### **DP21**

**13200 US 50  
Kyberz, CA 95720**

#### **Diesel**

#### **Kirkwood**

**1501 Kirkwood meadows Dr.  
Kirkwood, CA 95646**

#### **Diesel**

***EQPM Kevin Bare (209) 388-5580***

### **Repairs**

#### **Cal-OES Equipment**

***ChueThao (916) 213-5267***  
**3791 Bradview Dr  
Sacramento, CA 95827**

#### **Incident Repairs**

***Contact: (916) 206-8967***  
**2441 Headington Road  
Placerville, CA 95667**

***10:00 p.m. to 6:00 a.m. repair contact number: (916) 206-8967***

### **Transportation**

***EQPM Bob Johnson (530) 360-6313***

***EQPM (T) Kyle Popovich (719) 464-4858***

***EQPM Fidel Fernandez (909) 520-1770***

***GSUL(T) Jason Truelock (209) 419-3678***

***GSUL Jeremy Christofferson (951) 287-0886***



# TRAINING MESSAGE

## “ATTENTION”

**TRAINEES, IF YOU KNOW THAT YOU ARE BEING DEMOBBED, PLEASE SEE TRAINING TO CLOSE OUT YOUR PAPERWORK PRIOR TO DEMOB**

### **TRAINEES – For close out**

- **Bring in your completed task book**
- **Bring your completed task book evaluation record**
- **Bring your completed ICS 225**

**Training is located next to ESS**





**DEMOBILIZATION PLAN - SUMMARY  
CALDOR FIRE INCIDENT  
CA-ENF-024030**

**GENERAL INFORMATION**

The Demobilization Plan is developed to facilitate the orderly removal and checkout of resources on the incident. By definition, surplus personnel are available for release if they have rested for a minimum of 8 hours, are cleaned up, outfitted and have a vehicle ready to depart to their next destination.

**GENERAL GUIDELINES**

- **NO RESOURCES WILL LEAVE THE INCIDENT UNTIL AUTHORIZED TO DO SO BY THE DEMOB UNIT.**
- Efforts will be made to ensure that all released personnel arrive at their destination prior to 2200 hours.
- All Resources will arrive at the Demobilizations Unit at their scheduled time Only.
- All government and hired vehicles leaving the incident will have a safety inspection. If a vehicle is within 1,000 miles of a "B" service, it is the responsibility of the resource to contact Ground Support and have an oil change prior to their scheduled demobilization time.
- **All Rental Vehicles will receive a safety inspection prior to leaving the incident.**
- All trainees are to keep their time up to date and report to the Training Specialist with their task books and evaluations prior to completion of the demobilization process.
- All strike team leaders are responsible to call **North Ops at 1-530-224-2466** immediately upon being released from the incident

**RESPONSIBILITIES**

**Unit Leaders** will declare resources excess to their **Section Chief**. **Section Chiefs** will declare excess resources to the Planning Section Chief through the **Resource Unit Leader**. This should be done 36 hours in advance of anticipated release. **Use the Declaration of Excess Resources sheet or General Message Form (ICS-213) to list all excess resources.** Include the resource name, request number, name of person, date and time of declared excess, and time in which the resource will be eligible to leave. Send to the **RESOURCE UNIT** where the resource will be determined to be surplus to the incident. Surplus resources will then be able to report to the **DEMOB UNIT**, receive a Demobilization Checkout Form (ICS 221), get the appropriate ICS 221 signatures, and then return the completed ICS 221 to the DEMOB UNIT prior to final release or reassignment. Resources are not to contact **South Ops** or the expanded dispatch center unless instructed to do so by the Demobilization Unit.

**RELEASE PRIORITIES**

1. **Organized fire departments**
2. **OES engines**
3. **Hired personnel and equipment**
4. **Other agencies (USFS, BLM, etc.)**
5. **Out of region CAL FIRE forces**
6. **Within Region CAL FIRE Forces**
7. **Unit CAL FIRE Forces**

**TRAVEL INFORMATION**

All resources will meet agency specific requirements on hours of travel per day. For CAL FIRE hand crews, a full 24 hour reset period shall be adhered to before departing from the incident. After a crew's last operational period they shall begin the demobilization release procedure during their 24 hour off shift. In addition, they must use the following complete 24 hour period as reset time before they depart from the incident.



## **FINANCE MESSAGE**

### **FEDERAL RESOURCES**

- Refer to Caldor Federal Finance Procedures

### **CAL FIRE TIME UNIT (Personnel and Hired Equipment)**

- **CAL FIRE PERSONNEL** – Ensure you have started your eFC-33's and update after each shift. Please make sure Epay schedules are up to date.
- **HIRED EQUIPMENT SUPPLIERS** – Check-in with the TIME Unit and drop off your agreements.

### **DIVISION / GROUP - LINE SUPERVISORS**

- Please turn in hired equipment shift tickets at the end of each shift.
- **SHIFT TICKET BOOKS** – Available in the TIME Unit for agency line supervisors only.

### **COMP / CLAIMS**

- **Damage Claims (suppression, property, vehicle)**
  - ICS-213. We will need location, description of damages, and your contact information.



# Federal Finance Message

## TIME COLLECTION:

While electronic submission of CTR's and Shift tickets is preferred, Federal Incident Finance will also accept hard-copy documents. Please see the Federal Finance Box located at the Finance Section Chief trailer at Placerville Camp, or near Ticket Windows at Heavenly Camp.

- ◆ PLEASE INCLUDE RO IN SUBJECT LINE OF EMAIL, PLEASE DOCUMENT H-PAY FOR DUTY BEING PERFORMED
- ◆ PLEASE MARK YOUR LAST DAY AS **FINAL** WHEN YOU ARE DEMOBING
- ◆ PLEASE MAKE EVERY EFFORT TO TURN IN ALL CTR'S AND SHIFT TICKETS DAILY.
- ◆ PLEASE INCLUDE DOCUMENTATION ON CTR OR SHIFT TICKET OF SUPERVISOR APPROVAL OF LODGING AND/OR MEAL REINBURSMENT, IN ADDTION TO RECEIPTS
- ◆ PLEASE INCLUDE YOUR RESOURCE ORDER # ON ALL DOCUMENTATION SUBMITTED, INCLUDING RECEIPTS.
- ◆ IF EQUIPMENT HAS BEEN ASSIGNED MORE THAN 14 DAYS, FEEL FREE TO CONTACT US TO REQUEST AN INTERIM/PROGRESS INVOICE PAYMENT.
- ◆ PLEASE ENSURE YOU INCLUDE LOCATION OF WHERE YOU ARE WORKING (BRANCH OR DIVISION) ON CTR OR SHIFT TICKET

## FINANCE CHECK IN:

- ◆ PLEASE ENSURE THE BELOW DOCUMENTS ARE EMAILED TO FINANCE WITH RO NOTED:

Agency Equipment/Crews:	Overhead:	Contract Equipment/Contract Crews:	Cooperator:
<ul style="list-style-type: none"> <li>• Manifest</li> <li>• Resource Order</li> <li>• CTR's</li> </ul>	<ul style="list-style-type: none"> <li>• Resource Order</li> <li>• AD Hire Form (If an AD)</li> <li>• CTR's</li> </ul>	<ul style="list-style-type: none"> <li>• Agreement/Manifest</li> <li>• Resource Order</li> <li>• Shift Ticket</li> <li>• Inspection Forms</li> </ul>	<ul style="list-style-type: none"> <li>• Cooperative Agreement</li> <li>• Resource Order</li> <li>• Shift Ticket</li> <li>• Inspection Forms</li> </ul>

# CALDOR FEDERAL FINANCE PROCEDURES



Finance Email: [2021.caldor.finance@firenet.gov](mailto:2021.caldor.finance@firenet.gov)

Finance Hotline: 530-330-5450

## Directions for emailing Documents:

<p style="text-align: center;"><b>Federal Contract Resources</b></p> <p>Send To: <a href="mailto:2021.caldor.finance@firenet.gov">2021.caldor.finance@firenet.gov</a>  <b>SUBJECT: Include Key Word: <i>Equipment</i></b></p>	<p style="text-align: center;"><b>Federal Overhead and Crews</b></p> <p>Send To: <a href="mailto:2021.caldor.finance@firenet.gov">2021.caldor.finance@firenet.gov</a>  <b>SUBJECT: Include Key Word: <i>Time</i></b></p>
---	--

## DOCUMENTS TO EMAIL TO FINANCE

	<p><b>Federal Overhead and Crews</b></p>	<p>Regular Government Personnel &amp; ADs attachments:  <b>@Check-In:</b> Crew Manifests, MOUs, or Cooperative Agreement (if applies), AD Casual Hire Sheet/RO  <b>Daily:</b> Crew Time Report (CTR), Shift Ticket (<i>when applies</i>), receipts (fuel issues, travel receipts, etc.)  <b>@Demob:</b> Signed OF288, Final Equipment Use Invoice</p>
	<p><b>Federal Contract Resources</b></p>	<p>Private: Contractor Attachments:  <b>@Check-In:</b> Resource Order, Full Contract/Agreement, Certifications  <i>(if required)</i>, Pre-Inspection  <b>Daily:</b> SHIFT Tickets, receipts (fuel issues, claims, etc.)  <b>@Demob:</b> Contractor Evaluations, Final Shift Tickets and receipt for Addition/Deductions, Post-Inspection, Final Signed Invoices</p>

## FEDERAL FINANCE DEMOB PROCEDURES

**All Resources** will be sent their **DRAFT OF-288/OF-286's** via the Finance email. 12 hours will be provided to allow the resource to review their document and reply back to Finance with the statement "No Corrections Necessary" or a description of any issues. After Finance receives the email, any discrepancies will be resolved. Next, the resource is sent the **FINAL DOCUMENT** for signature. They will then email the signed document back to Finance, if able. Finance will then sign the **FINAL DOCUMENT** and email it back to the resource. This completes the process.

# SHIFT TICKET EXAMPLE

EMERGENCY SHIFT TICKET and EVALUATION FORM						Contractor Name <b>DOZER DUDE</b>							
Incident or Project Name <b>CALDOR</b>		Incident Number <b>CAENF024030</b>		Request Number <b>E#</b>		Operator #1 <b>BOB SMITH</b>	Operator #2 <b>TOM SMITH</b>						
Agreement Number <b>XXX - 000000 - 00</b>						Operator Furnished By: <input checked="" type="checkbox"/> Contractor <input type="checkbox"/> Government							
Equipment Make <b>CAT</b>			Equipment Model / Type <b>D6XM</b>			Operating Supplies Furnished By: <input checked="" type="checkbox"/> Contractor <input type="checkbox"/> Government							
Serial Number <b>111111</b>			Licence Number <b>111111</b>			Equipment Status <input checked="" type="checkbox"/> Inspected <input checked="" type="checkbox"/> Under Agreement <input type="checkbox"/> Released by Government <input type="checkbox"/> Withdrawn by Contractor							
Equipment Use (Circle) <b>Hours</b> Days / Miles						Remarks/Comments **  <b>NO DAMAGE/ NO CLAIMS</b>							
Date Mo / Day	Start	Stop	Work	Assignment									
<b>8/18</b>	<b>0700</b>	<b>2400</b>	<b>17</b>	<b>DIV M</b>									
<b>8/19</b>	<b>0001</b>	<b>0700</b>	<b>7</b>	<b>DIV M</b>									
Vendor Rating						Govt. Rep. Name and Position - PRINT <b>Mike Weber</b>							
<table border="1"> <tr> <td></td> <td>Poor*</td> <td>Avg.</td> <td>Good</td> <td>Exc.</td> <td>N/A</td> </tr> </table>							Poor*	Avg.	Good	Exc.	N/A	Govt. Rep. Signature <i>Mike Weber</i>	
	Poor*	Avg.	Good	Exc.	N/A								
Met Performance Expectations						Contractor Signature <i>Bob Smith</i>							
Equipment in Safe Working Condition						Date <b>07/13/21</b> Time <b>0800</b>							
Operator Skill Level						Overall Performance							
Operates Safely						<p>* NOTE: Any rating of POOR requires an explanation in Comment Section.</p> <p>**Final evaluation or for more documentation, use an ICS Form 230 or equivalent.</p>							
Operator's Cooperation Level						CALFIRE 297 (Rev 3-2011)							
Overall Performance						<p>Pink - Finance      Blue - Home Unit HE Coordinator      Yellow - Vendor      White - Govt Representative</p>							

EMERGENCY SHIFT TICKET and EVALUATION FORM						Contractor Name <b>DUDE TRANSPORT</b>							
The responsible Government Officer will complete this form each shift													
Incident or Project Name <b>CALDOR</b>		Incident Number <b>CAENF024030</b>		Request Number <b>E # Here</b>		Operator #1 <b>BOB SMITH</b>	Operator #2 <b>TOM SMITH</b>						
Agreement Number <b>XXX - 000000 - 00</b>						Operator Furnished By: <input checked="" type="checkbox"/> Contractor <input type="checkbox"/> Government							
Equipment Make <b>TRANSPORT/ KENWORTH</b>			Equipment Model / Type <b>COZAD TRAILER /26 WHEELS</b>			Operating Supplies Furnished By: <input checked="" type="checkbox"/> Contractor <input type="checkbox"/> Government							
Serial Number <b>1XP3ESMP14239012</b>			Licence Number <b>9999999</b>			Equipment Status <input checked="" type="checkbox"/> Inspected <input checked="" type="checkbox"/> Under Agreement <input type="checkbox"/> Released by Government <input type="checkbox"/> Withdrawn by Contractor							
Equipment Use (Circle) <b>Hours</b> Days / Miles						Remarks/Comments **  <b>NO DAMAGE/ NO CLAIMS</b>							
Date Mo / Day	Start	Stop	Work	Assignment									
<b>8/18</b>	<b>0700</b>	<b>2400</b>	<b>17</b>	<b>DIV M</b>									
<b>8/19</b>	<b>0001</b>	<b>0700</b>	<b>7</b>	<b>DIV M</b>									
Vendor Rating						Govt. Rep. Name and Position - PRINT <b>Mike Weber</b>							
<table border="1"> <tr> <td></td> <td>Poor*</td> <td>Avg.</td> <td>Good</td> <td>Exc.</td> <td>N/A</td> </tr> </table>							Poor*	Avg.	Good	Exc.	N/A	Govt. Rep. Signature <i>Mike Weber</i>	
	Poor*	Avg.	Good	Exc.	N/A								
Met Performance Expectations						Contractor Signature <i>Bob Smith</i>							
Equipment in Safe Working Condition						Date <b>07/13/21</b> Time <b>0800</b>							
Operator Skill Level						Overall Performance							
Operates Safely						<p>* NOTE: Any rating of POOR requires an explanation in Comment Section.</p> <p>**Final evaluation or for more documentation, use an ICS Form 230 or equivalent.</p>							
Operator's Cooperation Level						CALFIRE 297 (Rev 3-2011)							
Overall Performance						<p>Pink - Finance      Blue - Home Unit HE Coordinator      Yellow - Vendor      White - Govt Representative</p>							

Turn shift tickets into Time Unit.





**STATE HIRED EQUIPMENT ONLY**  
**SCAN AND FILL OUT FORM**



**\*\*FOR PAYMENT FROM DISPATCH – 9/7/21\*\***







## CALDOR INCIDENT PEER SUPPORT:



The Caldor Peer Support Team is available on the incident for any peer support needs.

Examples of peer support needs are, but not limited to, understanding stress reactions, dealing with traumatic experiences, professional or personal crisis, other behavioral health impacts and/or obtain vetted resiliency resources.

The best way to get a hold of a Peer Team member is to call the number below or stop by the ESS Trailer.



Peer Support Handouts

**In addition, there is an on-site clinician available to meet on an individual and/or group basis.**

**Caldor Incident Peer Support Help Line  
916-206-9957**

**Watch for the signs and symptoms of stress in yourself and the people around you. Try and stay positive and get much needed rest when you can. We can do this, together!**

**A message to our firefighters from ASHLEY IVERSON.**



**Stay Healthy, Stay Alert and Stay Strong!**



**Official Sources of Public Information for  
CALDOR FIRE WEST ZONE**

<b>Incident Information Line:</b> (530) 303-2455	<b>Incident Media Line:</b> (530) 806-3212
<b>Incident Website:</b> <a href="http://www.fire.ca.gov">www.fire.ca.gov</a>	<b>Email Signup:</b> <a href="https://tinyurl.com/bbhw2cm5">https://tinyurl.com/bbhw2cm5</a>



STATUS	
<b>Incident Start Date:</b> August 14, 2021	<b>Total Personnel:</b>
<b>Acreage:</b>	<b>Containment:</b>

**Media Law**

The California State Penal Code Section 409.5(d) allows the news media to enter scenes of disaster, riot, or civil disturbance. Properly identified members of the news media should not be restricted from entering locations specified within the code. However, this does not include crime scenes, and does not imply that the news media may interfere with incident operations while they are in the areas of concern. If entering such a location that is hazardous, they should be advised; media access cannot be prevented for safety reasons unless their presence would impede CAL FIRE’s mitigation of the incident or the disturbing of evidence. When working around the media, remember:

- Media **is not permitted** on private property without the property owners permission.
- If approached and questioned by the media and or the public, talk about your assignment or task at hand. Remember to wear all the appropriate PPE.
- If needed call for an incident PIO through the chain of command.
- Never speculate, give opinions or speak for others.
- There is no such thing as an “off the record” comment.

**CAL FIRE Social Media Policy (Social Media 0691)**

Social Media is increasingly being used by public agencies, the media as well as the public. This form of communication continues to grow rapidly in order to supply the instant gratification needs of society. Therefore when on a CAL FIRE incident you will adhere to the CAL FIRE Social Media Policy, 0691. You can get further information about the CAL FIRE Social Media Policy from the incident Public Information Officer. While assigned to the incident, there will be no posting of:

- Inappropriate information or materials
- No opinions
- No endorsements
- Inappropriate pictures or videos

**Lost and Found**

The Information Section will manage Lost and Found items for the incident. If you have lost an item leave your contact information and what you have lost at the Information Section. If you have found an item on the incident bring the item to the Information Section with your contact information as well.

<b>Incident Base Camp Mailing Address</b>
c/o Public Information Office/Trailer 102 Placerville Dr. Placerville, CA 95667





## Resource Advisor Update

**Avoidance areas for cultural and sensitive resources are being flagged within Divisions. If work needs to occur in areas identified by the following flagging/placard, please contact a REAF assigned to your Branch.**

**Avoidance Areas = Pink/Black Checkered Flagging and yellow placards**



**Lead READ – Jen House available at ICP**



**DOZER PARKING**  
**Caldor Incident**  
CA-ENF-024030

Directions  
-----

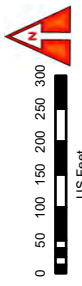
Take 50 EAST

EXIT Missouri Flat Rd

Turn LEFT on Missouri Flat Rd

Turn RIGHT Mother Lode Dr

Destination is in 2.4 miles



DISCLAIMER:  
The displayed incident data is approximate and should not be used for legal purposes. The data was prepared from GIS data maintained by various sources and approved for use by the Incident Management System (IMS) for mapping and reporting purposes only.

**Dozers and Heavy Equipment**  
-----  
**5854 Mother Lode Dr.  
Placerville, CA 95667**



Father Lode Rd

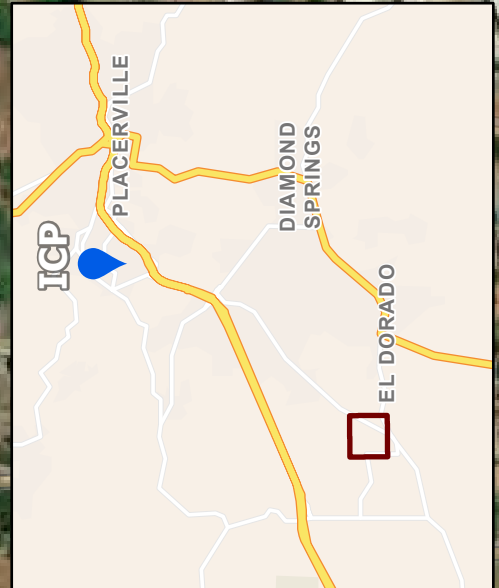
Venture Rd

Venture Rd

Irish Port Ln

Mother Lode Dr

Southern Pacific







**BASECAMP MAP**  
**Caldor Incident**  
 CA-ENF-024030  
 September 6, 2021

- 1 Trailer Row
- 2 Meeting
- 3 Equipment time
- 4 FSC
- 5 Lunch/water/ice
- 6 Liaison
- 7 PIO/media
- 8 Clerical
- 9 ESS
- 10 Supply
- 11 Briefing
- 12 Overhead parking
- 13 Sleeper trailers
- 14 Main gate
- 15 Tent sleeping
- 16 Engine parking
- 17 National Guard
- 18 Tent sleeping
- 19 Engine/Truck parking
- 20 Shower
- 21 Laundry
- 22 Vendor Parking
- 23 Facilities
- 24 Feeding
- 25 Plans
- 26 Situation
- 27 READ
- 28 MKU
- 29 CAL-MAT
- 30 IT
- 31 OES
- 32 Suppression/Repair

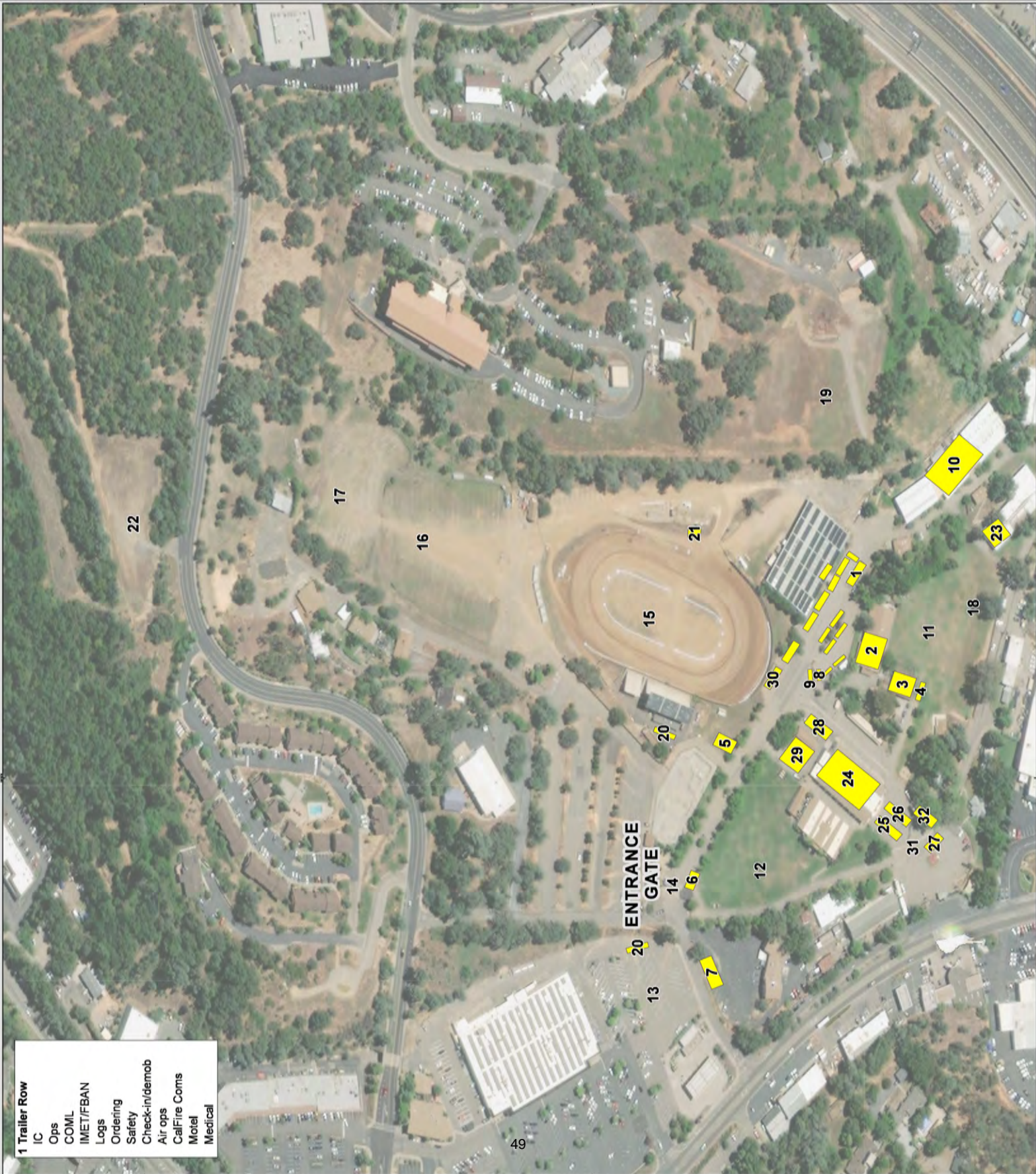
**Dozers and Heavy Equipment**

5854 Mother Lode Dr.  
 Placerville, CA 95667



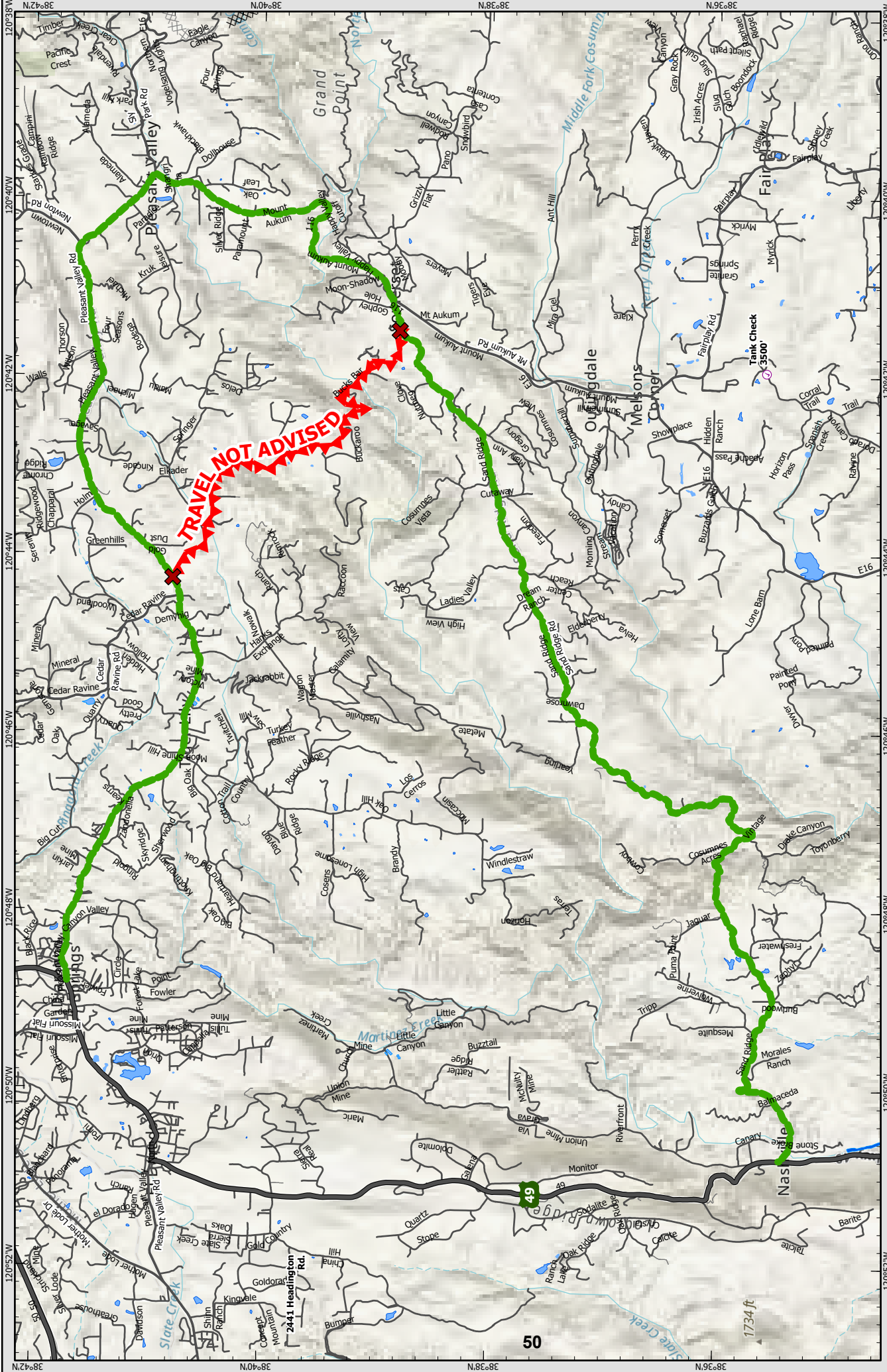
DISCLAIMER: This map is for informational purposes only. It is not intended for use in any legal proceeding. The information contained in this map is based on the best available information and is not a guarantee of accuracy. The user assumes all responsibility for the use of this map and its contents. No warranty is made by the provider of this map.

9/7/2021 1:44 PM



- 1 Trailer Row
- IC
- Ops
- COML
- IMET/FBAN
- Logs
- Ordering
- Safety
- Check-in/demob
- Air ops
- CallFire Coms
- Motel
- Medical





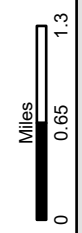
# Water Tender Route

## Calder Incident

### CA-ENF-024030



Datum: NAD 83 1:81,501



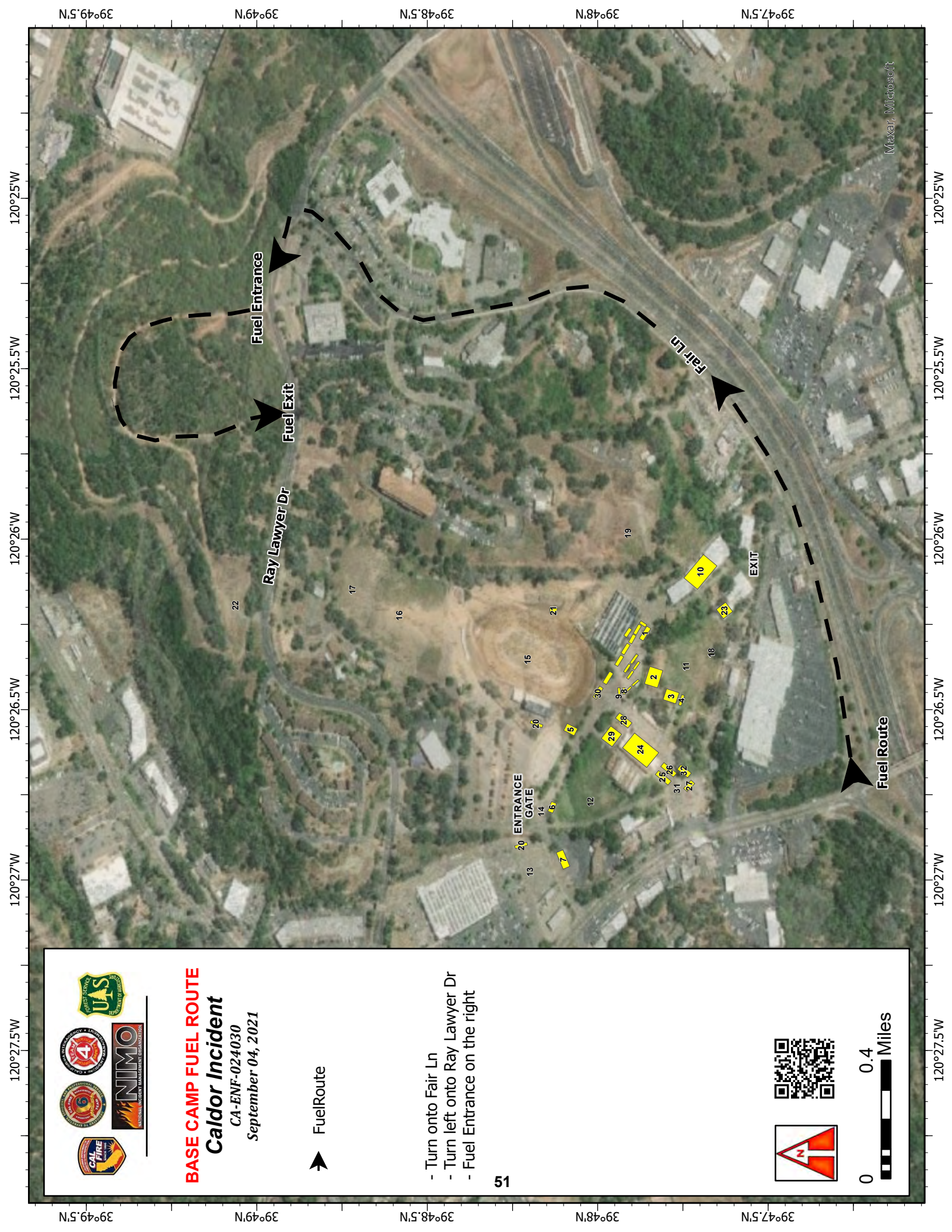
- Off-Site Fuel
- Ground Support
- DO NOT TRAVEL
- Bucks Bar Rd
- Completed Dozer Line
- Planned Doz
- LocalRoads



DISCLAIMER:  
The displayed incident data is approximate and should only be used for reporting base layer. It was generated from GIS data maintained by the agency. Accuracy is not guaranteed. Accuracy is not guaranteed. Accuracy is not guaranteed.

1734 ft





Maxar, Microsoft



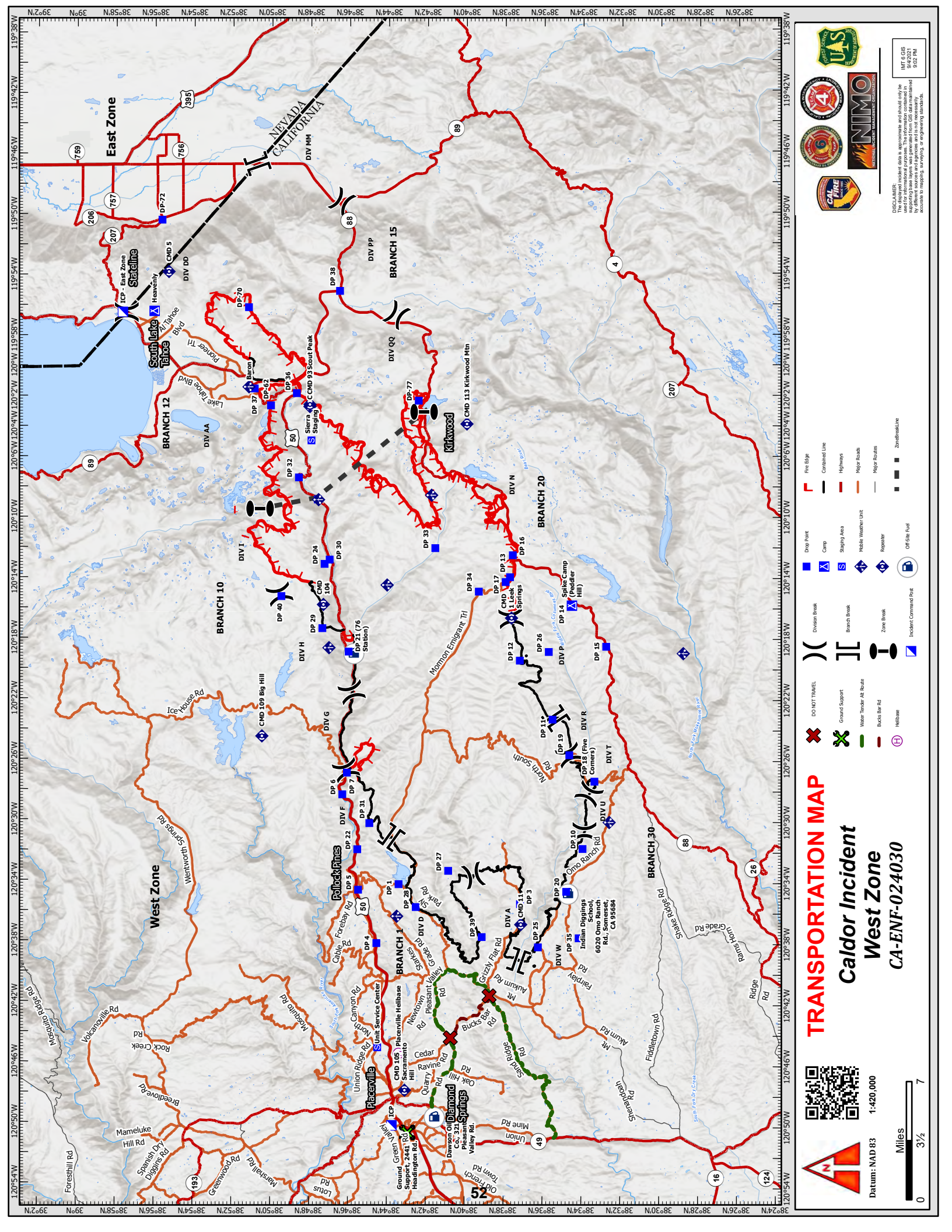
**BASE CAMP FUEL ROUTE**  
**Caldor Incident**  
 CA-ENF-024030  
 September 04, 2021



- Turn onto Fair Ln
- Turn left onto Ray Lawyer Dr
- Fuel Entrance on the right







# TRANSPORTATION MAP

## Caldor Incident

### West Zone

#### CA-ENF-024030

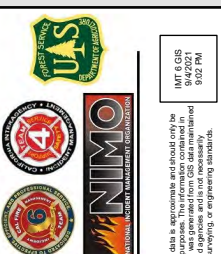


Datum: NAD 83 1:420,000



Miles 0 3 1/2 7

- Fire Edge
- Contained Line
- Highways
- Ridge Routes
- Ridge Routes
- Zone/Interface
- Drop Point
- Camp
- Staging Area
- Mobile Weather Unit
- Responder
- Off Site Fuel
- Division Break
- Branch Break
- Zone Break
- Incident Command Post
- DO NOT TRAVEL
- Ground Support
- Water Tanker At Route
- Bus Stop Rd
- Helibase



**DISCLAIMER:**  
 The displayed incident data is approximate and should only be used for planning purposes. The data was generated from GIS data maintained by the California Department of Forestry and Fire Protection. Accuracy is not guaranteed for any specific application or engineering standards.

IMF EGIS  
 9/4/2021  
 9:22 PM



