

# INCIDENT ACTION PLAN

## CALDOR INCIDENT WEST ZONE

CA-ENF-024030

P5N8GM21

Monday



### OPERATIONAL PERIOD

9/13/2021 0700

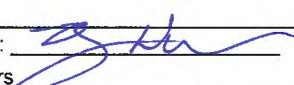
to

9/14/2021 0700





### ORGANIZATION ASSIGNMENT LIST (ICS 203)

<b>1. Incident Name:</b> Caldor Incident - West Zone		<b>2. Operational Period: Date From:</b> 9/13/2021 Time From: 0700		<b>Date To:</b> 9/14/2021 Time To: 0700	
<b>3. Incident Commander(s) and Command Staff:</b>			<b>7. Operation Section:</b>		
IC/UC's	C. Blankenheim / J. Reinarz / A. Burlew (T) / G. Magaña (T)		Operations	B. Mackwood / B. Monday	
Deputy	B. Carter		Deputy Operations	A. Ahmad / L. Haack (T) / L. Monsen (T)	
Safety Officer	R. Danielson / J. Rabuck / N. La Russo (T)		Night Ops	J. Marsh (T)	
Information Officer	I. Sanchez / K. Greene				
Liaison Officer	J. Owens / C. Thompson (T) / K. Pack / C. Cruz / G. Stark				
<b>4. Agency/Organization Representatives:</b>			<b>Branch</b>	<b>I</b>	
USFS AREP	J. Marsolais	Division/Group	A / D	L. Stacher	
Cal Fire AREP	M. Blankenheim	Division/Group			
EDSO	G. Almos	Division/Group			
SPI	T. Tate	<b>Branch</b>	<b>X</b>	<b>G. Trull</b>	
PG&E	M. Webb	Division/Group	F / G / H	C. Allen (T)	
COVID-19 Advisor	K. Nimmo / K. Obele	Division/Group	I	J. Spinder (T)	
EMSA Agency Admin	B. Gates	Division/Group			
Grizzly Flats CSD	J. Lauther	Division/Group			
Lake Valley Fire Dist	B. Zlendick	Division/Group			
IBA	J. Bennett	Division/Group			
Amador County Sheriff	J. Navarre	<b>Branch</b>	<b>XX</b>	<b>R. Engler</b>	
Placerville PD	J. Wren	Division/Group	N / P	K. Dejong (T) (12 hr) / M. Khazall (T)	
CCC	H. Garcia / L. Setzer-Gonzalez	Division/Group			
CHP	R. Hatfield	Division/Group			
Cal Trans	G. Duffy	Division/Group			
BLM	J. Martinez	<b>Branch</b>	<b>XXX</b>		
Cal OES	D. Franklin	Division/Group	R / T / U / W	B. Muenzer / C. Zimmerman (T)	
AT&T	K. Young	Division/Group			
El Dorado Irrigation Dist.	D. Corcoran	<b>Branch</b>	<b>FSR</b>	<b>S. DeBenedet</b>	
<b>5. Planning Section:</b>			Division/Group	Group 1	P. Smith (12hr)
Chief	J. Windham / D. Carter / K. Tsudama (T)		Division/Group	Group 2	P. McDaniel (12hr)
Deputy	R. Noon		Division/Group	Group 3	D. Van Goidsenhoven (12hr)
Resource Unit	K. O'Neil / G. Padilla / A. Hubbs		Division/Group	Group 4	J. Fazio (12hr)
Situation Unit	J. Day / T. Byrd (T) / M. Brady (T)		Division/Group	Group 5	C. Noyes (12hr)
Demobilization Unit	L. Pasero / J. Gardner (T)		Division/Group		
GISS	F. Postler	Division/Group	Federal	R. Waggoner (12hr)	
FBAN	R. Clark	Division/Group			
IMET	M. Stubblefield	Staging Area	ICP	D. Hames (12hr) / R. McMillen (12hr)	
Hired Equipment Tech Spec.	D. Hibdon	<b>Air Operations Branch:</b>		<b>Director:</b>	<b>M. Deacon</b>
Training Specialist	C. Soiza	Air Operations Branch Deputy			
Crew Tech Spec.	J. Rafferty	Air Support Group Supervisor		B. Idol	
Fire Suppression Repair	S. DeBenedet	Air Tactical Group Supervisor			
Strategic Op. Planner	K. Soper / T. Riesenhuber	Helibase Manager		E. Johnson	
ENF Resource Advisor	J. House				
<b>6. Logistics Section:</b>					
Chief	K. Lowe / Z. Cunningham / S. Irvine (T)		<b>8. Finance/Administration Section:</b>		
Deputy Chief	M. Ferguson		Chief	C. Carroll / D. Reid	
Supply Unit	C. Bonner		Deputy Chief	J. Flagg / S. Vincent (T)	
Facilities Unit	B. Smutney		Time Unit	M. McConnell	
Ground Support Unit	M. Esparza / K. Lovestone		Procurement Unit	J. Shifrin	
Communications Unit	J. McCormick		Comp/Claims Unit	C. Nerey	
Medical Unit	J. Vanderhulst / K. Higgins (T)		Cost Unit	M. Patton	
Motel Unit	A. Brown				
Food Unit	L. Levi				
<b>Prepared By: Name:</b>	R. Noon	<b>Position/Title:</b>	PSC1	<b>Signature:</b>	
<b>ICS 203</b>		<b>Date/Time:</b>	9/12/2021 2300 hours		



## FIRE BEHAVIOR FORECAST

FORECAST NUMBER: 26	TYPE OF FIRE: WILDLAND FIRE
FIRE NAME: CALDOR WEST ZONE CA-ENF-024030	OPERATIONAL PERIOD: 9/13-9/14/21 0700-0700
DATE ISSUED: 9/12/2021	TIME ISSUED: 1900Hrs
UNIT: ELDORADO NATIONAL FOREST	SIGNED: Robert Clark Typed/printed: R. Clark <i>R. Clark</i>

### INPUTS

#### WEATHER SUMMARY:

**Sky/ Weather...** Sunny... Tonight...Clear.

**Max Temp** 77-82 Branch 10 and 20, 85-90 Branch 1 and 30. **Min Humidity** 17-23%

**Wind (20 ft)**

**DAY- SLOPE/VALLEY:** SW 7-12 gusts 20mph **RIDGETOPS:** SW 5-10 gusts to 20mph.

**NIGHT- SLOPE/ VALLEY:** Downslope/ down canyon 4-9 with gusts to 13mph in lower drainages.

**RIDGETOPS:** SE 10-15mph.

**\*\*Review the weather forecast for more details and QR for RAWs unit information\*\***

### OUTPUTS

FIRE BEHAVIOR **\*\* Fuels and Fire Behavior Advisory in effect for Northern California\*\***

#### GENERAL:

Active fire behavior will continue with the warm and dry weather trend. Re-burn potential exists within green islands where fire intensity/understory fuel bed was not adequate to ignite and consume the overstory. Winds may align with slopes and ignite these areas within the interior. Needle cast and leaf drop in areas has led to a fuel layer that may allow creeping fire to spread from a heat source. Consumption of stumps and heavy down fuels will continue to occur until mopped up. Live and dead fuels throughout the fire area are critically dry and will remain very receptive to ignition.

Timber Litter– **Rate of Spread** up to 12 ft/mn

**Flame Lengths** 3-6 ft.

Understory– **Rate of Spread** up to 25 ft/mn

**Flame Lengths** 10-14 ft

Brush – **Rate of Spread** up to 70 ft/mn

**Flame Lengths** 8-12 ft.

**Probability of Ignition:** up to 80% **Spotting Distance:** up to .5 mile. (Peak gusts)

**Forecasted ERC:** 81 **1000Hr fuel moisture:** 7

**ENF Pocket Card Watch out Thresholds:** Combinations of any of these factors can greatly increase fire behavior. 20' Wind speed over 5mph, RH less than 22%, Temperature over 84, 1000 Hr fuel moisture less than 9.

*Fire behavior predictions are based on the hottest and driest period of the day. Rates of spread and flame lengths could exceed forecasted values.*

#### SPECIFIC:

ALL BRANCHES...Interior islands, heavy downed fuels, and green timber stringers will continue to smolder, burn out, and will have the potential for active fire runs and isolated torching. Ensure the control lines are clear of needle and leaf cast in areas of understory burn.

**AIR OPERATIONS:** Sunset: 1913 Sunrise: 0644

Weak inversion in the drainages and valleys through 0900.

#### SAFETY

- Snags and stump holes are likely in timber areas. Deep hot ash pits should be expected.
- Fuels outside the line continue to be very receptive. Be prepared to react to rollout or new starts
- Watch for fire-weakened trees/branches falling after extended burn-out times of heavy fuels or by the wind.

# Fuels and Fire Behavior Advisory

## Northern California

September 1, 2021 to September 15, 2021



**Subject:** Potential for extreme fire behavior due to critically low live and dead fuel moistures, very dry conditions resulting from persistent drought, minimal snowpack and spring precipitation, and elevated fire danger rating values across much of northern California.

**Discussion:** Fires burning in northern California are exhibiting extreme fire growth based on critical fuel conditions. Fire spread is fuel driven and does not depend on wind to spread. Events with wind have led to extreme rates of spread. Surface fuels are very receptive to embers. Long range spotting, area ignition, and group torching is occurring on large fires frequently.

**Difference from normal conditions:** Northern California is in a drought; currently with 90% at Extreme to Exceptional levels. The drought is expected to persist or intensify throughout the fire season. Deficient rainfall and snowpack with early melt off has resulted in fuels that are below average in dryness, with record setting conditions for most areas.

### Concerns to Firefighters and the Public:

- Energy Release Component (ERC) at numerous weather stations set record maximums already this year and are running at or above the 97<sup>th</sup> percentile in most cases. Expect increased fire intensity and spread rates in these areas. Early season extreme fire behavior has been observed in both light and heavy fuels. **Anticipate increased spread rates, spotting, and active nighttime burning.**
- The combination of persistent drought and record-low rainfall and snowpack amounts has led to very low live and dead fuel moistures. Low 1000-hour fuel moistures have been evidenced by complete consumption of dead fuels on recent fires. Live fuel moistures in grasses, shrubs and trees, have already reached critical levels in many areas of Northern California due to limited green-up this spring. **Expect fires to ignite easier and spread faster. Do not expect fires to exhibit reduced fire behavior when entering areas of live fuels; anticipate increased spread rates and spotting.**
- Direct attack is often not feasible under regular diurnal wind conditions with ground resources. And aviation utilization is often insufficient in moderating rate of spread without immediate heavy ground resource response. **Anticipate higher resistance to control in all fuel types.**
- Already this year, Northern California has experienced large fire activity and multiple team deployments. California will likely experience an extended fire season. It is important to be mindful of and manage fatigue for all resources. **Everyone, every day, returns home safely.**

### Mitigation Measures:

- Local and inbound fire personnel need to be aware that fire behavior across the state is exceeding normal expectations for this time of the year. **Local briefings need to be thorough and highlight specific fire environment conditions. These include but are not limited to local weather forecasts, Pocket Cards, ERC's, live and dead fuel moistures.**
- Suppression actions need to be based on good anchor points, escape routes, and safety zones. **Remember LCES. Experienced lookouts are essential under these conditions.**
- Base all actions on current and expected behavior of the fire. **Augment initial attack resources as incident activity dictates.**

**Area of Concern:** Northern California except for the following Predictive Service Areas: North Coast and Bay Marine, west of Highway 101 in Mid-Coast to Mendocino and Diablo-Santa Cruz, and the north eastern portion of Far Eastside.

# Fuels and Fire Behavior Advisory

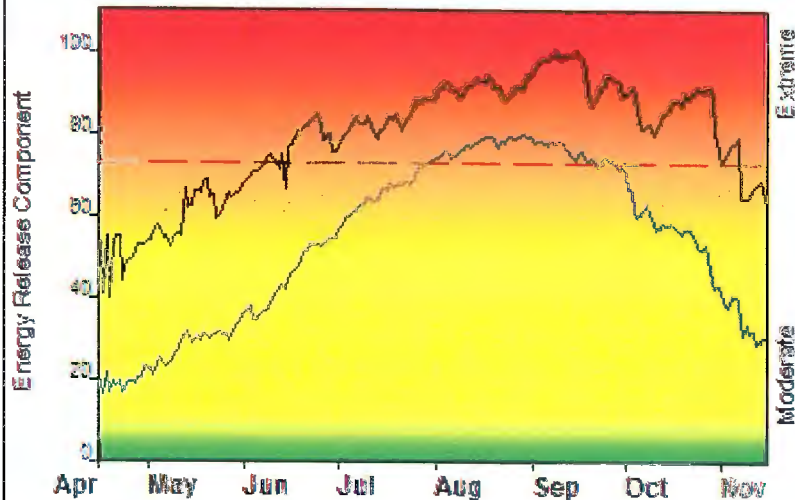
## Northern California

September 1, 2021 to September 15, 2021



### FIRE DANGER -- FDRA 335 - Eldorado NF

Maximum, Average, and 70th Percentile, based on 22 years data



### Fire Danger Area:

- ◆ FDRA 335
- ◆ Fire Wx Zone: CAZ289
- ◆ 70th Percentile ERC: T2
- \* Meets NWCG Wx Station Standards



### Fire Danger Interpretation:



- EXTREME** -- Use extreme caution
- (Caution)** -- Watch for change
- Moderate** -- Lower Potential, but always be aware

**Maximum** -- Highest Energy Release Component by day for 1992 - 2013

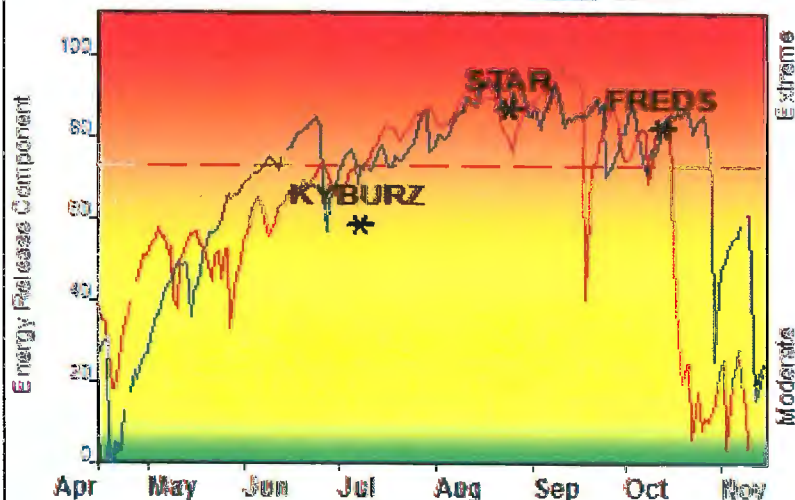
**Average** -- shows past fire season over 22 years (4671 observations)

**70th Percentile** -- Only 30% of the 4671 days from 1992 - 2013 had an Energy Release Component above T2

### Local Thresholds - Watch out:

- Combinations of any of these factors can greatly increase fire behavior:
- 20' Wind Speed over 5 mph, RH less than 22%,
  - Temperature over 84, 1000-Hour Fuel Moisture less than 9

### Years to Remember: 2001 2004



Fuel Model: G - Short-Needle (Heavy Dead)

### Remember what Fire Danger tells you:

- ✓ Energy Release Component gives seasonal trends calculated from 2 pm temperature, humidity, daily temperature & rh ranges, and precip duration.
- ✓ Wind is NOT part of ERC calculation.
- ✓ Watch local conditions and variations across the landscape -- Fuel, Weather, Topography.
- ✓ Listen to weather forecasts -- especially WIND.

### Past Experience:

Fires >100 acres typically occur at an ERC of T2 or greater. Most large fire growth occurs due to a combination of steep slopes, fuel conditions and winds. The majority of large fires on the ENF occur late in the season when fuels have fully cured in conjunction with North wind events. Early season large fires have occur on the ENF and are associated with years that have a lack of precipitation resulting in early season drying of large fuels. ENF fire history is highlighted with fires that have a high resistance to control due to topography and fuels promoting high fire line intensities and spotting. ENFRAWS; Hellhole, Bald Mtn, Owens Camp, Steely Fork, Beaver.

Responsible Agency: USFS-ENF

FF-4.1 July 1922 04/25/2014-14:16 (C:\ENF\FIRE MGMT\NFDRS\FireSeason\_Values)

Design by NWCG Fire Danger Working Team





## CAL FIRE INCIDENT MANAGEMENT TEAM 2



<b>1. INCIDENT NAME:</b>	<b>2. DATE PREPARED:</b>	<b>3. TIME PREPARED:</b>
Caldor Incident	September 12, 2021	1800
<b>4. PREPARED BY:</b>	<b>5. LEADER NAME:</b>	<b>6. OPERATIONAL PERIOD:</b>
Ryan Danielsen SOF1	Ryan Danielsen SOF1	9/13/2021 0700 TO 9/14/2021 0700

# SAFETY MESSAGE

*Carefulness doesn't cost anything.  
Carelessness could cost your life.*

### Repopulation Hazards

- Working around structures
- Hazardous materials
- Utility Company Operations
- Heavy Equipment
- Hazardous trees and ash pits
- Congested roadways
- Increased civilian presence



### Covid-19 Precautions:

- Keep your distance. Wear a mask when less than 6' from other people.
- No group gatherings without masks.
- Wash your hands.
- Don't show up to work sick.
- Conduct daily health evaluations on your personnel.

### Mop Up:

- Conduct thorough briefing for all personnel.
- Use all required PPE, including eye protection.
- Be alert for stump holes and root cavities.
- Evaluate unburned islands/Increase situational awareness.
- Back haul all trash and equipment off the line.
- Lift equipment with your legs and not your back.

CAL FIRE INCIDENT MANAGEMENT TEAM 2 SOF1 Ryan Danielsen



Caldor Incident West Zone  
Risk Analysis ICS 215-A



DIV	HAZARDOUS ACTIONS/CONDITIONS	MITIGATIONS / WARNINGS / REMEDIES						
ALL	<b>EXTREME FIRE BEHAVIOR</b>	<ul style="list-style-type: none"> <li>-Note areas of green fuel stringers or needle cast (near heat signatures) that could cause the fire to stand up.</li> <li>-Expect deep duff, stump holes, and heavy fuels to retain heat for long durations.</li> <li>-Be diligent if fire spots and expect fire to advance quickly.</li> <li>-Read forecasts and seek input from IMET and FBAN. Validate on site observations with expectations.</li> <li>-Use PACE: Primary, Alternate, Contingency, Emergency planning.</li> <li>-Know your LCES and maintain Situational Awareness.</li> </ul>						
ALL	<b>COVID 19, ILLNESS, &amp; HYGIENE</b>	<ul style="list-style-type: none"> <li>-Adhere to local, state, federal and CDC health guidelines.</li> <li>-Maintain social distancing. Wear a <b>mask</b> regardless of vaccination status when in clusters, briefings, chow lines, etc.</li> <li><b>-Report any illness symptoms immediately to a supervisor.</b></li> <li>-Hygiene, hand washing, and disinfecting of surfaces &amp; handles often.</li> <li>-Enact practices that protect all assigned resources despite personal opinions and error on the side of the potential best outcome to protect against all infectious diseases.</li> </ul>						
ALL	<b>CIV PRESENCE/ REPOP</b>	<ul style="list-style-type: none"> <li>-Watch for civilian traffic in all areas – particularly with the recent partial opening of HWY 50.</li> <li>-Grizzly Flats area will have more residents – provide support, information, IMT contacts as feasible; show compassion and patience.</li> <li>-Watch for residents in and around the opened areas – but also in unexpected locations.</li> </ul>						
ALL	<b>COMPLACENCY</b>	<ul style="list-style-type: none"> <li>-Be alert for signs of fatigue and distractions; remain engaged.</li> <li>-Intentionally maintain situational awareness.</li> <li>-Have the right radio clone. Know your adjoining forces and FREQUENCIES.</li> <li>-Do not expect closures and checkpoints to limit access – residents will find ways int closed areas.</li> </ul>						
ALL	<b>DRIVING</b>	<ul style="list-style-type: none"> <li><b>-SLOW DOWN! That means ALL resources!</b></li> <li>-Use headlights – avoid “auto headlight” settings that may not activate in smoke or do not trigger taillights to turn on.</li> <li>-Drive defensively. Use flaggers, overhead lights, pullouts, etc. &amp; limit exposure when working along roads.</li> <li>-Watch Speed through communities; public perception and safety are key.</li> <li>-Utilize spotters and backers; when in doubt, scout it out.</li> </ul>						
ALL	<b>STEEP TERRAIN / ROLLING DEBRIS</b>	<ul style="list-style-type: none"> <li>-Watch your footing while hiking in steep terrain.</li> <li>-Expect loose/rolling debris, particularly in areas that fire has burned away surface fuels.</li> <li>-Maintain <b>Situational Awareness</b>. Reassess Tree hazards frequently in the work area.</li> <li>-Dangerous Mountain Roads – SLOW Defensive Driving.</li> <li>-Watch for trees and rocks falling across roads and fire lines.</li> </ul>						
ALL	<b>HAZARD TREE AWARENESS</b>	<ul style="list-style-type: none"> <li>-The ones that haven’t fallen yet; look up, look around <b>Identify Hazard Trees</b>.</li> <li>-Drought-Stressed Trees are weakened – dry soils provide no support for root systems! --</li> <li>-Communicate the hazard. Flag and make proper notifications.</li> <li>-Use equipment to mitigate hazard trees where feasible.</li> <li>-Do not fall trees out of your certification level. Evaluate wind and lean prior to cutting.</li> </ul>						
ALL	<b>FATIGUE, HEAT &amp; DEHYDRATION</b>	<ul style="list-style-type: none"> <li>- Do not underestimate the task at hand. Adhere to work/rest cycle for all tasks.</li> <li><b>-Drink water</b> before, during and after shifts, up to 1.5 gal. per shift.</li> <li>-Review Heat Related Emergencies (IRPG Pg. 109). Seek shade when you can.</li> <li>-Watch for stack-effect of fatigue and exhaustion; REST &amp; Plan operations.</li> </ul>						
ALL	<b>AIRCRAFT OPERATIONS</b>	<ul style="list-style-type: none"> <li>-Monitor air-to-ground frequencies; they are your eyes in the sky.</li> <li>-Use air-to-ground frequency to communicate with aircraft.</li> <li>-Use clear, concise statements when directing aircraft; <b>CLEAR THE LINE!</b></li> <li>-Do not rely on aircraft: visibility &amp; priorities can change quickly.</li> </ul>						
<b>Incident Name:</b> CALDOR INCIDENT WEST ZONE		<table border="0" style="width: 100%;"> <tr> <td style="text-align: center;"><b>Prepared by:</b></td> <td style="text-align: center;"><b>OPERATIONAL PERIOD</b></td> </tr> <tr> <td>Ryan Danielsen, CAL FIRE IMT2 SOF1 <i>[Signature]</i></td> <td>9/13/21-9/14/21</td> </tr> <tr> <td>Jen Rabuck, NIMO Team 2 SOF1 <i>[Signature]</i></td> <td>0700 - 0700</td> </tr> </table>	<b>Prepared by:</b>	<b>OPERATIONAL PERIOD</b>	Ryan Danielsen, CAL FIRE IMT2 SOF1 <i>[Signature]</i>	9/13/21-9/14/21	Jen Rabuck, NIMO Team 2 SOF1 <i>[Signature]</i>	0700 - 0700
<b>Prepared by:</b>	<b>OPERATIONAL PERIOD</b>							
Ryan Danielsen, CAL FIRE IMT2 SOF1 <i>[Signature]</i>	9/13/21-9/14/21							
Jen Rabuck, NIMO Team 2 SOF1 <i>[Signature]</i>	0700 - 0700							



# CAL FIRE / Incident Management Team 2

## COVID-19 Response Algorithm



**Employee Response Action Plan**

**COVID-19 Positive Test or COVID-19 Positive Clinical Symptoms Presentation**

- *COVID 19 Symptoms: Cough, SOB, Fever or afebrile, Chills, Muscle Pain, Sore throat, Loss of taste/smell*
- Employee informs Company Officer and Strike Team Leader of presumed/confirmed COVID-19 symptoms.
- Employee advised to seek evaluation by Medical Unit and CAL MAT or base camp medical unit.
- Crew initiates cleaning measures. Mask, safety glasses, gloves worn. (If needed, LOGS will assist)
- Medical Unit to notified IC, Liaison, Safety and Logistics ASAP. Medical Unit will notify COVID-19 Public Health Officer and determine need for testing and locations.



**Incident Action Plan**

- Company Officer / Strike Team Leader notified of personnel with COVID-19 positive test or symptom.
- Medical Unit evaluates individual(s) and need for care and evaluation.
- IC, Liaison, Safety and Logistics notification made to determine course of incident evaluation and response.
- Line Chief, Agency Administrator, and Region Office updated upon notification



**Facilities Response**

- Medical and Safety notified
- Incident Notification
- Disinfection plan initiated.
- Resource Status Evaluated



**Medical Evaluation & Contact Tracing**

- Personnel interviewed by Medical Unit . List of Positive contacts made in the last 5 days acquired. All Exposed are required to wear surgical mask, self monitor for Fever/Resp symptoms for up to 14 days (exposed personnel are subject to COVID-19 testing)
- Home Unit / Department utilized and retrospective tracking of Positive COVID-19 personnel inter-actions are identified within the last 5 days.
- Home Unit / Department updated by Company Officer / Strike Team Leader.
- Public Health Department is contacted and updated by IC or Designated Representative.
- Positive COVID-19 Employees w/symptoms will need to be evaluated by Health Department conducting testing, prior to returning to assignment.
- Positive COVID-19 Employees w/o symptoms may be required to be evaluated and resource status will be reviewed prior to returning to assignment.



# CAL FIRE TEAM 2 COVID SYMPTOM CHECK





# ASSIGNMENT LIST (ICS 204 WF)

CONTROLLED UNCLASSIFIED  
INFORMATION/BASIC

<b>1. Incident Name:</b> <b>Caldor Incident - West Zone</b>	<b>2. Operational Period:</b> Date From: 09/13/21    Date To: 09/14/21 Time From: 0700    Time To: 0700	<b>3. Branch</b> <b>Division</b> <b>X</b> <b>F / G / H</b>
<b>4. Operations Personnel:</b>		Page 1 of 1

Operations Section Chief: <b>B. Mackwood / B. Monday</b> Branch Director: <b>G. Trull</b> Division/Group Supervisor: <b>C. Allen (T)</b>	Night Ops: <b>J. Marsh (T)</b> Branch Safety: <b>W. Frederick (12hr) / G. Illingworth (T)</b> Air Attack:
--	---


5. Resources Assigned:	** Resources Below in Bold are 12 Hour **							
Resource Identifier	ALS	LWD	Leader	Personnel	Request #	Hours	Reporting Location	
STC AEU 9271C****			N. Pimlott	19	E-21339	0700-0700	DP-23, Strawberry	
STC XCZ 2326C	X		Akin	22	E-20039	0700-0700	DP-23, Strawberry	
STC XSD 6440C	X		Durrell	22	E-20199	0700-0700	DP-23, Strawberry	
CRW CZU MBY1 (CCC)			R. Switzer	16	C-20097	0700-0700	DP-23, Strawberry	
DOZ PVT E-101*			P. Bower	2	E-101	0700-0700	DP-23, Strawberry	
DOZ PVT E-20533*			S. Hill	2	E-20533	0700-0700	DP-23, Strawberry	
W/T PVT E-20003			B. Bedell	2	E-20003	0700-0700	DP-23, Strawberry	
EXC*						0700-1900	DP-23, Strawberry	
EXC*						0700-1900	DP-23, Strawberry	
CHIP PVT E-21313			T. Vaneck	2	E-21313	0700-1900	DP-23, Strawberry	
CHIP PVT E-21314			F. Stone	2	E-21314	0700-1900	DP-23, Strawberry	
FALM PVT O-20485			J. Hagerty	2	O-20485	0700-1900	DP-23, Strawberry	
HEQB (T) GOTTS *			Gotts	1		0700-1900	DP-23, Strawberry	
FEMP POTTS			R. Potts	1	O-20840	0700-1900	DP-23, Strawberry	
FEMT PRIETTO			D.Prietto	1	O-20725	0700-1900	DP-23, Strawberry	

**6. Work Assignments:**  
 Mop up 300' in from control lines.  
 Fall hazard trees and trees that threaten control lines.  
 Backhaul garbage, hose, water, and equipment.

**7. Special Instructions:**  
 REAF: J. Mabe  
 REMS 18 assigned to Branch X, staging at DP-21.  
**\*\*\*\* 9271C is available for IA response to any new fires.**  
**\*Resources will be utilized for Federal FSR,**

**8. Communications**

Name	Ch	Function	Rx Freq	Rx Tone	Tx Freq	Tx Tone	Notes
COMMAND: Please refer to Communication Plan.							
VTAC13	9	TACTICAL	158.7375	156.7 (T6)	158.7375	156.7 (T6)	IDENTIFY AS DIVISION FOX
A/G TAC	14	AIR TO GROUND	164.1375		164.1375		WEST ZONE A/G TAC
CALCORD	15	MEDICAL	156.0750	156.7 (T6)	156.0750	156.7 (T6)	EMS COORDINATION ONLY
GUARD 8	16	EMERGENCY	168.6250		168.6250	110.9 (T1)	EMERGENCY USE ONLY

<b>9. Prepared by: Name:</b>	K. O'Neil	RESL	24 Hr Shift: 39
	Signature: 		12 Hr Shift: 9
<b>ICS 204</b>	Date/Time: 9/12/2021 2200		Total: 94

# ASSIGNMENT LIST (ICS 204 WF)

CONTROLLED UNCLASSIFIED  
INFORMATION//BASIC

<b>1. Incident Name:</b> <b>Caldor Incident - West Zone</b>	<b>2. Operational Period:</b> Date From: 09/13/21    Date To: 09/14/21 Time From: 0700    Time To: 0700	<b>3. Branch</b> <b>Division</b> <b>X</b> <b>I</b> <b>Page 1 of 1</b> <b>India</b>
--	---	--

**4. Operations Personnel:**

Operations Section Chief: <b>B. Mackwood / B. Monday</b> Branch Director: <b>G. Trull</b> Division/Group Supervisor: <b>J. Spinder (T)</b>	Night Ops: <b>J. Marsh (T)</b> Branch Safety: <b>W. Frederick (12hr) / G. Illingworth (T)</b> Air Attack:
--	---


<b>5. Resources Assigned:</b>		<b>** Resources Below in Bold are 12 Hour **</b>					
Resource Identifier	ALS	LWD	Leader	Personnel	Request #	Hours	Reporting Location
STC SCU 9160C			C Collins	16	E-20545	0700-0700	DP-30
<b>CRW Blue Mountain 5</b>			<b>U. Figuera</b>	20	<b>C-15</b>	<b>0700-1900</b>	<b>DP-30</b>
<b>W/T PVT E-20016</b>			<b>G. Orduno</b>	3	<b>E-20016</b>	<b>0700-1900</b>	<b>DP-30</b>
<b>EXC PVT E-21349*</b>				1	<b>E-21349</b>	<b>0700-1900</b>	<b>DP-30</b>
<b>EXC PVT E-21354*</b>			<b>A. Nonini</b>	1	<b>E-21354</b>	<b>0700-1900</b>	<b>DP-30</b>
<b>EXC PVT E-50154*</b>			<b>J. Sherrill</b>	1	<b>E-50154</b>	<b>0700-1900</b>	<b>DP-30</b>
<b>EXC PVT E-50155*</b>			<b>W. Willimas</b>	1	<b>E-50155</b>	<b>0700-1900</b>	<b>DP-30</b>
<b>TFLD LEWIS*</b>			<b>R. Lewis</b>	1	<b>O-20432</b>	<b>0700-1900</b>	<b>DP-30</b>
<b>TFLD (T) GOYETTE*</b>			<b>M. Goyette</b>	1	<b>O-20663</b>	<b>0700-1900</b>	<b>DP-30</b>
<b>HEQB (T) ALLOIS</b>			<b>Allois</b>	1	<b>O-20527</b>	<b>0700-1900</b>	<b>DP-30</b>
<b>FEMP FERREIRA</b>			<b>E. Ferreira</b>	1	<b>O-20173</b>	<b>0700-1900</b>	<b>DP-30</b>
<b>FEMP (T) MONTGOMERY</b>			<b>W. Montgomery</b>	1	<b>O-20373</b>	<b>0700-1900</b>	<b>DP-30</b>

**6. Work Assignments:**  
 Mop up 300' from control lines.  
 Pull hoselays where no longer required.  
 Backhaul trash and excess supplies.

**7. Special Instructions:**  
 REAF: P. Foulk, M. Santora  
 FEMT Prietto (12hr) assigned to Branch X.  
 REMS 18 assigned to Branch X.  
**\*Resources will be utilized for Federal FSR.**


**8. Communications**

Name	Ch	Function	Rx Freq	Rx Tone	Tx Freq	Tx Tone	Notes
COMMAND: Please refer to Communication Plan.							
CDF T27	11	TACTICAL	159.3075	192.8 (T16)	159.3075	192.8 (T16)	
A/G TAC	14	AIR TO GROUND	164.1375		164.1375		WEST ZONE A/G TAC
CALCORD	15	MEDICAL	156.0750	156.7 (T6)	156.0750	156.7 (T6)	EMS COORDINATION ONLY
GUARD 8	16	EMERGENCY	168.6250		168.6250	110.9 (T1)	EMERGENCY USE ONLY

**9. Prepared by: Name:** K. O'Neil    RESL    24 Hr Shift: 16  
 Signature:     12 Hr Shift: 32  
 ICS 204    Date/Time: 9/12/2021 2200    Total: 48

# ASSIGNMENT LIST (ICS 204 WF)

CONTROLLED UNCLASSIFIED  
INFORMATION//BASIC

<b>1. Incident Name:</b> <b>Caldor Incident - West Zone</b>		<b>2. Operational Period:</b> Date From: 09/13/21    Date To: 09/14/21 Time From: 0700    Time To: 0700				<b>3. Branch</b> <b>XX</b>		<b>Division</b> <b>N / P</b>	
<b>4. Operations Personnel:</b> Operations Section Chief: <b>B. Mackwood / B. Monday</b> Branch Director: <b>R. Engler</b> Division/Group Supervisor: <b>K. Dejong (T) (12 hr) / M. Khazall (T)</b>						Night Ops: <b>J. Marsh (T)</b> Branch Safety: <b>J. Bensley / J. Mainhart (T) (12hr)</b> Air Attack:			
<b>5. Resources Assigned:</b>		<b>** Resources Below in Bold are 12 Hour **</b>							
Resource Identifier	ALS	LWD	Leader	Personnel	Request #	Hours	Reporting Location		
STC SCU 9161C			R. West	17	E-21340	0700-0700	DP-16		
STC RRU 9311C			M. Scoville	17	E-20897	0700-0700	DP-16		
STC OES 1880C			R. Diede	22	E-21316	0700-0700	DP-16		
STF MVU 9336F			A. Knight	12	E-20501	0700-0700	DP-16		
T/F CALDOR 1 (3,3,3,3,3)			P. Moffett	18	E-9002	0700-0700	DP-16		
STG NEU 9234G (CCC)			A. Logan	31	C-20012	0700-0700	DP-16		
STG AEU 9273G (CDCR)			<b>A. Cholico</b>	30	<b>C-20259</b>	<b>0700-1900</b>	<b>DP-16</b>		
STG AEU 9277G (CDF)			<b>T. Silva</b>	23	<b>C-4</b>	<b>0700-1900</b>	<b>DP-16</b>		
CRW CNA 513				25	<b>C-20240.15</b>	<b>0700-1900</b>	<b>DP-16</b>		
CRW CNA 514				25	<b>C-20240.16</b>	<b>0700-1900</b>	<b>DP-16</b>		
W/T PVT E-20012			<b>R. Alvarez</b>	1	<b>E-20012</b>	<b>0700-1900</b>	<b>DP-16</b>		
W/T PVT E-20153			<b>M. Greer</b>	1	<b>E-20153</b>	<b>0700-1900</b>	<b>DP-16</b>		
W/T PVT E-20169			<b>R. Zeb</b>	1	<b>E-20169</b>	<b>0700-1900</b>	<b>DP-16</b>		
W/T PVT E-20302			R. Leaverton	2	E-20302	0700-0700	DP-16		
W/T PVT E-20324			R. Gold	2	E-20324	0700-0700	DP-16		
CHIP PVT E-21296			<b>R. Madden</b>	2	<b>E-21296</b>	<b>0700-1900</b>	<b>DP-16</b>		
CHIP PVT E-21312			<b>J. Orman</b>	2	<b>E-21312</b>	<b>0700-1900</b>	<b>DP-16</b>		
FALM PVT O-20486			<b>R. Peterson</b>	1	<b>O-20486</b>	<b>0700-1900</b>	<b>DP-16</b>		
<b>6. Work Assignments:</b> Mop up, improve line, and mitigate hazards. Fall hazard trees and trees that threaten control lines.									
<b>7. Special Instructions:</b> Adventure Medics assigned to Branch XX. REAF: P. Yerger, M. Young.									
<b>8. Communications</b>									
Name	Ch	Function	Rx Freq	Rx Tone	Tx Freq	Tx Tone	Notes		
COMMAND: Please refer to Communication Plan.									
CDF T28	8	TACTICAL	151.1825	192.8 (T16)	151.1825	192.8 (T16)	IDENTIFY AS DIVISION NOV		
A/G TAC	14	AIR TO GROUND	164.1375		164.1375		WEST ZONE A/G TAC		
CALCORD	15	MEDICAL	156.0750	156.7 (T6)	156.0750	156.7 (T6)	EMS COORDINATION ONLY		
GUARD 8	16	EMERGENCY	168.6250		168.6250	110.9 (T1)	EMERGENCY USE ONLY		
<b>9. Prepared by: Name:</b>		K. O'Neil		RESL		24 Hr Shift:		103	
		Signature: 				12 Hr Shift:		110	
<b>ICS 204</b>		Date/Time: 9/12/2021 2200				Total:		232	












## ASSIGNMENT LIST (ICS 204 WF)

CONTROLLED UNCLASSIFIED  
INFORMATION//BASIC

<b>1. Incident Name:</b>		<b>2. Operational Period:</b>				<b>3. Branch</b>		<b>Division</b>	
<b>Caldor Incident - West Zone</b>		Date From: 09/13/21 Time From: 0700		Date To: 09/14/21 Time To: 0700		<b>FSR</b>		<b>Group 3</b>	
<b>4. Operations Personnel:</b>						<b>Page 1 of 1</b>			
Operations Section Chief: <b>B. Mackwood / B. Monday</b>					Night Ops: <b>J. Marsh (T)</b>				
Branch Director: <b>S. DeBenedet</b>					Branch Safety:				
Division/Group Supervisor: <b>D. Van Goidsenhoven (12hr)</b>					Air Attack:				
<b>5. Resources Assigned:</b>		<b>** Resources Below in Bold are 12 Hour **</b>							
Resource Identifier	ALS	LWD	Leader	Personnel	Request #	Hours	Reporting Location		
ENG3 DRC 33			<b>C. Bartlett</b>	5	<b>E-21224</b>	<b>0700-1900</b>	<b>DP-42</b>		
DOZ PVT E-20179			<b>J. Snyder</b>	3	<b>E-20179</b>	<b>0700-1900</b>	<b>DP-42</b>		
DOZ PVT E-20180			<b>E. Roen</b>	3	<b>E-20180</b>	<b>0700-1900</b>	<b>DP-42</b>		
DOZ PVT E-20830			<b>D. Martinelli</b>	2	<b>E-20830</b>	<b>0700-1900</b>	<b>DP-42</b>		
MAS PVT E-20753			<b>D. Huskey</b>	1	<b>E-20753</b>	<b>0700-1900</b>	<b>DP-42</b>		
EXC PVT E-232			<b>D. West</b>	2	<b>E-232</b>	<b>0700-1900</b>	<b>DP-42</b>		
EXC PVT E-21326			<b>C. Pincher</b>	1	<b>E-21326</b>	<b>0700-1900</b>	<b>DP-42</b>		
SKD PVT E-21319			<b>J. Klee</b>	1	<b>E-21319</b>	<b>0700-1900</b>	<b>DP-42</b>		
SKDGN PVT E-246			<b>W. Emery</b>	1	<b>E-246</b>	<b>0700-1900</b>	<b>DP-42</b>		
FSRS							<b>DP-42</b>		
THSP SAMANIEGO			<b>D. Samaniego</b>	1		<b>0700-1900</b>	<b>DP-42</b>		
<b>6. Work Assignments:</b>									
Implement the fire suppression repair plan.									
Identify and document fire suppression repair needs.									
<b>7. Special Instructions:</b>									
REAF-C. Sloan.									
<b>8. Communications</b>									
Name	Ch	Function	Rx Freq	Rx Tone	Tx Freq	Tx Tone	Notes		
COMMAND: Please refer to Communication Plan.									
CDF T26	10	TACTICAL	159.2925	192.8 (T16)	159.2925	192.8 (T16)			
A/G TAC	14	AIR TO GROUND	164.1375		164.1375		WEST ZONE A/G TAC		
CALCORD	15	MEDICAL	156.0750	156.7 (T6)	156.0750	156.7 (T6)	EMS COORDINATION ONLY		
GUARD 8	16	EMERGENCY	168.6250		168.6250	110.9 (T1)	EMERGENCY USE ONLY		
<b>9. Prepared by: Name:</b>		K. O'Neil		RESL		24 Hr Shift:		0	
		Signature: 				12 Hr Shift:		14	
<b>ICS 204</b>		Date/Time: 9/12/2021 2200				Total:		20	

# ASSIGNMENT LIST (ICS 204 WF)

CONTROLLED UNCLASSIFIED  
INFORMATION//BASIC

<b>1. Incident Name:</b> <b>Caldor Incident - West Zone</b>	<b>2. Operational Period:</b> Date From: 09/13/21    Date To: 09/14/21 Time From: 0700    Time To: 0700	<b>3. Branch</b> <b>Division</b> <b>FSR</b> <b>Group 4</b>
<b>4. Operations Personnel:</b>		Page 1 of 1

Operations Section Chief: **B. Mackwood / B. Monday**    Night Ops: **J. Marsh (T)**  
 Branch Director: **S. DeBenedet**    Branch Safety:  
 Division/Group Supervisor: **J. Fazio (12hr)**    Air Attack:


5. Resources Assigned:	** Resources Below in Bold are 12 Hour **							
Resource Identifier	ALS	LWD	Leader	Personnel	Request #	Hours	Reporting Location	
ENG6 EIC 612			<b>E. Giles</b>	3	<b>E-21098</b>	<b>0700-1900</b>	<b>DP-31</b>	
DOZ PVT E-20025			<b>N. Edwards</b>	2	<b>E-20025</b>	<b>0700-1900</b>	<b>DP-31</b>	
DOZ PVT E-20260			<b>E. Herl</b>	2	<b>E-20260</b>	<b>0700-1900</b>	<b>DP-31</b>	
DOZ PVT E-20531			<b>C. Enriques</b>	2	<b>E-20531</b>	<b>0700-1900</b>	<b>DP-31</b>	
DOZ PVT E-20539			<b>C. Klauer</b>	3	<b>E-20539</b>	<b>0700-1900</b>	<b>DP-31</b>	
DOZ PVT E-20832			<b>E. Spratt</b>	1	<b>E-20832</b>	<b>0700-1900</b>	<b>DP-31</b>	
W/T PVT E-20706			<b>S. Krautheim</b>	1	<b>E-20706</b>	<b>0700-1900</b>	<b>DP-31</b>	
EXC PVT E-21345			<b>H. Swartz</b>	1	<b>E-21345</b>	<b>0700-1900</b>	<b>DP-31</b>	
MAST PVT E-241			<b>B. Young</b>	1	<b>E-241</b>	<b>0700-1900</b>	<b>DP-31</b>	
MAST PVT E-20835			<b>C. Elderd</b>	1	<b>E-20835</b>	<b>0700-1900</b>	<b>DP-31</b>	
CHIP PVT E-21342			<b>C. Elderd</b>	2	<b>E-21342</b>	<b>0700-1900</b>	<b>DP-31</b>	
FSRS WAHL			<b>E. Wahl</b>	1		<b>0700-1900</b>	<b>DP-31</b>	

**6. Work Assignments:**  
 Implement the fire suppression repair plan.  
 Identify and document fire suppression repair needs.

**7. Special Instructions:**  
 REAF-C. Sloan.

**8. Communications**


Name	Ch	Function	Rx Freq	Rx Tone	Tx Freq	Tx Tone	Notes
COMMAND: Please refer to Communication Plan.							
CDF T26	10	TACTICAL	159.2925	192.8 (T16)	159.2925	192.8 (T16)	
A/G TAC	14	AIR TO GROUND	164.1375		164.1375		WEST ZONE A/G TAC
CALCORD	15	MEDICAL	156.0750	156.7 (T6)	156.0750	156.7 (T6)	EMS COORDINATION ONLY
GUARD 8	16	EMERGENCY	168.6250		168.6250	110.9 (T1)	EMERGENCY USE ONLY

**9. Prepared by: Name:** K. O'Neil    RESL    24 Hr Shift: 0  
 Signature:     12 Hr Shift: 18  
 ICS 204    Date/Time: 9/12/2021 2200    Total: 20



# ASSIGNMENT LIST (ICS 204 WF)


CONTROLLED UNCLASSIFIED  
INFORMATION//BASIC

<b>1. Incident Name:</b> <b>Caldor Incident - West Zone</b>		<b>2. Operational Period:</b> Date From: 09/13/21    Date To: 09/14/21 Time From: 0700    Time To: 0700				<b>3. Branch</b> <b>FSR</b>		<b>Division</b> <b>Federal</b>	
<b>4. Operations Personnel:</b> Operations Section Chief: <b>B. Mackwood / B. Monday</b> Branch Director: <b>S. DeBenedet</b> Division/Group Supervisor: <b>R. Waggoner (12hr)</b>						Night Ops: <b>J. Marsh (T)</b> Branch Safety: Air Attack:			
<b>5. Resources Assigned:</b>		<b>** Resources Below in Bold are 12 Hour **</b>							
Resource Identifier	ALS	LWD	Leader	Personnel	Request #	Hours	Reporting Location		
CRW CNA 515				25	C-20240.17	0700-1900			
DOZ ENF 3			<b>Stark</b>	3	E-200	0700-1900			
DOZ PVT E-20675			<b>J. Worrell</b>	2	E-20675	0700-1900			
DOZ PVT E-20702			<b>H. Campell</b>	2	E-20702	0700-1900			
W/T PVT E-20277			<b>D. Castle</b>	1	E-20277	0700-1900			
W/T PVT E-20286			<b>J. Cross</b>	1	E-20286	0700-1900			
EXC PVT E-21346			<b>J. Kroller</b>	1	E-21346	0700-1900			
EXC PVT 21348			<b>M. Amos</b>	2	E-21348	0700-1900			
EXC									
FELB									
FELB									
SKD PVT E-50152			<b>D. Dial</b>	2	E-50152	0700-1900			
SKD									
FORW									
FORW									
LDFR									
LDFR									
GRP TRK									
<b>6. Work Assignments:</b> Implement the fire suppression repair plan. Identify and document fire suppression repair needs.									
<b>7. Special Instructions:</b> REAF: A. Speering, D. Smith.									
<b>8. Communications</b>									
Name	Ch	Function	Rx Freq	Rx Tone	Tx Freq	Tx Tone	Notes		
COMMAND: Please refer to Communication Plan.									
CDF T26	10	TACTICAL	159.2925	192.8 (T16)	159.2925	192.8 (T16)			
A/G TAC	14	AIR TO GROUND	164.1375		164.1375		WEST ZONE A/G TAC		
CALCORD	15	MEDICAL	156.0750	156.7 (T6)	156.0750	156.7 (T6)	EMS COORDINATION ONLY		
GUARD 8	16	EMERGENCY	168.6250		168.6250	110.9 (T1)	EMERGENCY USE ONLY		
<b>9. Prepared by: Name:</b>		K. O'Neil		RESL		24 Hr Shift:		0	
Signature:						12 Hr Shift:		39	
ICS 204		Date/Time: 9/12/2021 2200				Total:		39	



## ASSIGNMENT LIST (ICS 204 WF)

CONTROLLED UNCLASSIFIED  
INFORMATION//BASIC

<b>1. Incident Name:</b>		<b>2. Operational Period:</b>				<b>3. Branch</b>		<b>Division</b>	
<b>Caldor Incident - West Zone</b>		Date From: 09/13/21		Date To: 09/14/21		<b>FSR</b>		<b>Federal</b>	
		Time From: 0700		Time To: 0700					
<b>4. Operations Personnel:</b>						Page 2 of 2			
Operations Section Chief: <b>B. Mackwood / B. Monday</b>						Night Ops: <b>J. Marsh (T)</b>			
Branch Director: <b>S. DeBenedet</b>						Branch Safety:			
Division/Group Supervisor: <b>R. Waggoner (12hr)</b>						Air Attack:			
<b>5. Resources Assigned:</b>		<b>** Resources Below in Bold are 12 Hour **</b>							
Resource Identifier	ALS	LWD	Leader	Personnel	Request #	Hours	Reporting Location		
<b>GRP TRK</b>									
<b>GRD PVT E-20045</b>			<b>L. Drew</b>	<b>1</b>	<b>E-20045</b>	<b>0700-1900</b>			
<b>CHIP PVT E-20611</b>			<b>M. Nieves</b>	<b>2</b>	<b>E-20611</b>	<b>0700-1900</b>			
<b>CHIP PVT E-50174</b>			<b>C. Tingler</b>	<b>3</b>	<b>E-50174</b>	<b>0700-1900</b>			
<b>CHIP</b>						<b>0700-1900</b>			
<b>FAL1 HERREN</b>			<b>C. Herren</b>	<b>1</b>	<b>O-532</b>	<b>0700-1900</b>			
<b>FALM PVT O-20484</b>			<b>J. Moglia</b>	<b>2</b>	<b>O-20484</b>	<b>0700-1900</b>			
<b>FALM PVT O-20501</b>			<b>B. Saucedo</b>	<b>2</b>	<b>O-20501</b>	<b>0700-1900</b>			
<b>FALM PVT O-20502</b>			<b>D. Standly</b>	<b>2</b>	<b>O-20502</b>	<b>0700-1900</b>			
<b>FALM PVT O-20503</b>			<b>M. Bigelow</b>	<b>1</b>	<b>O-20503</b>	<b>0700-1900</b>			
<b>HEQB (T) HAMILTON</b>			<b>D. Hamilton</b>	<b>1</b>	<b>O-551</b>	<b>0700-1900</b>			
<b>HEQB (T) PHAM</b>			<b>H. Pham</b>	<b>1</b>	<b>O-20577</b>	<b>0700-1900</b>			
<b>HEQB</b>									
<b>HEQB</b>									
<b>TFLD KINNEY</b>			<b>S. Kinney</b>	<b>1</b>	<b>O-20636</b>	<b>0700-0700</b>			
<b>TFLD (T) RAMEY</b>			<b>J. Ramey</b>	<b>1</b>	<b>O-20435</b>	<b>0700-0700</b>			
<b>TFLD (T) WARD</b>			<b>Ward</b>	<b>1</b>		<b>0700-1900</b>			
<b>TFLD</b>									
<b>6. Work Assignments:</b>									
Implement the fire suppression repair plan.									
Identify and document fire suppression repair needs.									
<b>7. Special Instructions:</b>									
REAF: A. Speering, D. Smith.									
<b>8. Communications</b>									
Name	Ch	Function	Rx Freq	Rx Tone	Tx Freq	Tx Tone	Notes		
COMMAND: Please refer to Communication Plan.									
CDF T26	10	TACTICAL	159.2925	192.8 (T16)	159.2925	192.8 (T16)			
A/G TAC	14	AIR TO GROUND	164.1375		164.1375		WEST ZONE A/G TAC		
CALCORD	15	MEDICAL	156.0750	156.7 (T6)	156.0750	156.7 (T6)	EMS COORDINATION ONLY		
GUARD 8	16	EMERGENCY	168.6250		168.6250	110.9 (T1)	EMERGENCY USE ONLY		
<b>9. Prepared by: Name:</b>		K. O'Neil		RESL		24 Hr Shift:		2	
		Signature: 				12 Hr Shift:		17	
<b>ICS 204</b>		Date/Time: 9/12/2021 2200				Total:		19	



## Division/Group Assignment List (ICS 204 WF)

Controlled Unclassified Information//Basic

<b>1. Incident Name:</b>			<b>3.</b>			
CALDOR INCIDENT EAST ZONE			<b>Branch:</b>		<b>Division/Group</b>	
<b>2. Operational Period:</b>			<b>XII</b>		<b>AA</b>	
Date/Time From: 09/13/2021 0700	MON	Date/Time To: 09/14/2021 0700				
<b>4. Operations Personnel</b>						
<b>OPERATIONS CHIEF</b>		CRAIG DAUGHERTY; BRIAN NEWMAN JOE GONZALES (T)		<b>BRANCH DIRECTOR</b>		**BOB TODESCHINI LWD-9/30
<b>DIVISION/GROUP SUPERVISOR</b>		JOHN CHESTER LWD-9/16		<b>BRANCH SAFETY</b>		BRIAN SAVAGE
<b>5. Resources Assigned this Period</b>						
Strike Team / Task Force / Resource Designator		LWD	Leader	Number Persons	Drop Off PT./Time	Pick Up PT./Time
**HCS1 SCU S/T 9163G C-20017		09/23	DANIEL JUDY	33	ICP HEAVENLY SKI RESORT/0700	ICP HEAVENLY SKI RESORT/1900
HC2 FIRESTORM 6 C-108		09/15	GENE LOPEZ	20	ICP HEAVENLY SKI RESORT/0700	ICP HEAVENLY SKI RESORT/1900
HC2 FRANCO 1 C-110		09/16	IGNACIO ROJAS	20	ICP HEAVENLY SKI RESORT/0700	ICP HEAVENLY SKI RESORT/1900
HC2 LAVA 9 C-50005		09/16	JOSE R. LOPEZ SR.	20	ICP HEAVENLY SKI RESORT/0700	ICP HEAVENLY SKI RESORT/1900
WFM1 BLACK HILLS WILDLAND FIRE MODULE O-50208		09/24	LEE DUEKER	10	ICP HEAVENLY SKI RESORT/0700	ICP HEAVENLY SKI RESORT/1900
SMOD RMP 32 O-50106		09/13	KEVIN RIGGS	10	ICP HEAVENLY SKI RESORT/0700	ICP HEAVENLY SKI RESORT/1900
SMOD MID PLAINS MOD O-50107		09/18	DAVID W SPENCER	10	ICP HEAVENLY SKI RESORT/0700	ICP HEAVENLY SKI RESORT/1900
SMOD IRON MOUNTAIN 26 O-50157		09/16	KEVIN BREITWISER	9	ICP HEAVENLY SKI RESORT/0700	ICP HEAVENLY SKI RESORT/1900
SMOD NMCIF - ACOMA2 O-50194		09/23	RYAN CARABAJAL	17	ICP HEAVENLY SKI RESORT/0700	ICP HEAVENLY SKI RESORT/1900
**S/T ES3 NEU S/T 9230C E-20892		09/28	BRIAN SKEHAN	20	ICP HEAVENLY SKI RESORT/0700	ICP HEAVENLY SKI RESORT/1900
T/F OES 6411T E-20239		09/21	TY DONOVAN HARRIS	20	ICP HEAVENLY SKI RESORT/0700	ICP HEAVENLY SKI RESORT/1900
ENG1 OES 328		09/21	GARRETT MILLER	4	ICP HEAVENLY SKI RESORT/0700	ICP HEAVENLY SKI RESORT/1900
ENG3 OES 8637		09/21	SHAWN EPSTEIN	3	ICP HEAVENLY SKI RESORT/0700	ICP HEAVENLY SKI RESORT/1900
ENG6 OES 6613		09/21	KYLE CRECELIUS	3	ICP HEAVENLY SKI RESORT/0700	ICP HEAVENLY SKI RESORT/1900
ENG6 OES 6602		09/21	LEHMAN TOBIAS	3	ICP HEAVENLY SKI RESORT/0700	ICP HEAVENLY SKI RESORT/1900
ENG1 OES351		09/21	CHAD SMITH	4	ICP HEAVENLY SKI RESORT/0700	ICP HEAVENLY SKI RESORT/1900
<b>8. Division/Group Communication Summary</b>						
Function	Channel	RX Frequency N/W	RX Tone/NAC	TX Frequency N/W	TX Tone/NAC	Mode
COMMAND	CMD 96	169.9625N	146.2	165.0500N	146.2	A
TACTICAL	NIFC T1	168.0500N		168.0500N		A
AIR TO GROUND	A/G CMD	167.9500N		167.9500N		A
AIR TO GROUND	A/G CMD E	166.6125N		166.6125N		A
AIR TO GROUND	A/G TAC E	169.2875N		169.2875N		A
AIR TO GROUND	CALCORD	156.0750N	156.7	156.0750N	156.7	A
AIR GUARD	EMERGENCY	168.6250N		168.6250N	110.9	A
<b>9. Prepared By (Resource Unit Leader)</b>			<b>Approved By (Planning Section Chief)</b>		<b>Date</b>	<b>Time</b>
SCOTT LAZENBY (T)			JOE SCURI		09/12/2021	2200

## Division/Group Assignment List (ICS 204 WF)

Controlled Unclassified Information//Basic

<b>1. Incident Name:</b>			<b>3.</b>			
CALDOR INCIDENT EAST ZONE			<b>Branch:</b>		<b>Division/Group</b>	
<b>2. Operational Period:</b>			<b>XII</b>		<b>AA</b>	
Date/Time From: 09/13/2021 0700	MON	Date/Time To: 09/14/2021 0700				
<b>4. Operations Personnel</b>						
<b>OPERATIONS CHIEF</b>		CRAIG DAUGHERTY; BRIAN NEWMAN JOE GONZALES (T)		<b>BRANCH DIRECTOR</b>		**BOB TODESCHINI LWD-9/30
<b>DIVISION/GROUP SUPERVISOR</b>		JOHN CHESTER LWD-9/16		<b>BRANCH SAFETY</b>		BRIAN SAVAGE
<b>5. Resources Assigned this Period</b>						
Strike Team / Task Force / Resource Designator		LWD	Leader	Number Persons	Drop Off PT./Time	Pick Up PT./Time
T/F XST 4204 E-21206		09/15	JEFF SERPA	17	ICP HEAVENLY SKI RESORT/0700	ICP HEAVENLY SKI RESORT/1900
SALIDA B12		09/16	MIKE LUNA	3	ICP HEAVENLY SKI RESORT/0700	ICP HEAVENLY SKI RESORT/1900
ENG3 B86		09/15	ANTHONY FOGG	4	ICP HEAVENLY SKI RESORT/0700	ICP HEAVENLY SKI RESORT/1900
ENG5 RDD594		09/15	KEN JENKINS	3	ICP HEAVENLY SKI RESORT/0700	ICP HEAVENLY SKI RESORT/1900
ENG6 MSTG3		09/15	MATT CURLESS	3	ICP HEAVENLY SKI RESORT/0700	ICP HEAVENLY SKI RESORT/1900
WWT1 TWA721		09/15	ALBERT DESROSIERS	2	ICP HEAVENLY SKI RESORT/0700	ICP HEAVENLY SKI RESORT/1900
ENG3 6291 E-50117		09/18	JACOB KOSCHIK	5	ICP HEAVENLY SKI RESORT/0700	ICP HEAVENLY SKI RESORT/1900
ENG3 HART 291 E-291		09/20	DENNIS GATES	3	ICP HEAVENLY SKI RESORT/0700	ICP HEAVENLY SKI RESORT/1900
ENG6 TX-TXF ENG 641 E-466		09/13	KENNETH GABRIEL UAL	4	ICP HEAVENLY SKI RESORT/0700	ICP HEAVENLY SKI RESORT/1900
WTT2 QUALITY CONST E-20008		09/17	P INDIHOR	1	ICP HEAVENLY SKI RESORT/0700	ICP HEAVENLY SKI RESORT/1900
WTT2 A.C. WATER SVC E-20017		09/19	B ROSE	1	ICP HEAVENLY SKI RESORT/0700	ICP HEAVENLY SKI RESORT/1900
WTT2 CGS INCORPORATED E-20280		09/20	J CORLEY	1	ICP HEAVENLY SKI RESORT/0700	ICP HEAVENLY SKI RESORT/1900
WTS1 A & G E-20173		09/18	N BALDIVIEZ	1	ICP HEAVENLY SKI RESORT/0700	ICP HEAVENLY SKI RESORT/1900
TFLD O-50001		09/17	GABRIEL PEASE-MADORE	1	ICP HEAVENLY SKI RESORT/0700	ICP HEAVENLY SKI RESORT/1900
TFLD O-20431		09/13	DANIEL J MONTOYA	1	ICP HEAVENLY SKI RESORT/0700	ICP HEAVENLY SKI RESORT/1900
FMOD UNDERDOG 3 O-50086		09/18	D. RILEY	2	ICP HEAVENLY SKI RESORT/0700	ICP HEAVENLY SKI RESORT/1900
<b>8. Division/Group Communication Summary</b>						
Function	Channel	RX Frequency N/W	RX Tone/NAC	TX Frequency N/W	TX Tone/NAC	Mode
COMMAND	CMD 96	169.9625N	146.2	165.0500N	146.2	A
TACTICAL	NIFC T1	168.0500N		168.0500N		A
AIR TO GROUND	A/G CMD	167.9500N		167.9500N		A
AIR TO GROUND	A/G CMD E	166.6125N		166.6125N		A
AIR TO GROUND	A/G TAC E	169.2875N		169.2875N		A
AIR TO GROUND	CALCORD	156.0750N	156.7	156.0750N	156.7	A
AIR GUARD	EMERGENCY	168.6250N		168.6250N	110.9	A
<b>9. Prepared By (Resource Unit Leader)</b>			<b>Approved By (Planning Section Chief)</b>		<b>Date</b>	<b>Time</b>
SCOTT LAZENBY (T)			JOE SCURI		09/12/2021	2200

## Division/Group Assignment List (ICS 204 WF)

Controlled Unclassified Information//Basic

<b>1. Incident Name:</b>		<b>3.</b>				
CALDOR INCIDENT EAST ZONE		<b>Branch:</b>		<b>Division/Group</b>		
<b>2. Operational Period:</b>		<b>XII</b>		<b>AA</b>		
Date/Time From: 09/13/2021 0700	MON	Date/Time To: 09/14/2021 0700	TUE			
<b>4. Operations Personnel</b>						
<b>OPERATIONS CHIEF</b>	CRAIG DAUGHERTY; BRIAN NEWMAN JOE GONZALES (T)		<b>BRANCH DIRECTOR</b>	**BOB TODESCHINI LWD-9/30		
<b>DIVISION/GROUP SUPERVISOR</b>	JOHN CHESTER LWD-9/16		<b>BRANCH SAFETY</b>	BRIAN SAVAGE		
<b>5. Resources Assigned this Period</b>						
Strike Team / Task Force / Resource Designator	LWD	Leader	Number Persons	Drop Off PT./Time	Pick Up PT./Time	
RES FRONT LINE EMS E-50097	09/18	DALE HOOVER/J.P. PATTIN	2	ICP HEAVENLY SKI RESORT/0700	ICP HEAVENLY SKI RESORT/1900	
<b>6. Control Operations/Work Assignments:</b>						
Utilize appropriate suppression methods to keep the fire within its current foot print while protecting life threats and impacts to infrastructure. Mop-up to the degree safe to do so and required for containment.						
<b>7. Special Instructions:</b>						
** Denotes 24 HR Shift						
Backhaul all unneeded supplies, nets, food, delivery items and trash. Respond to Calls for service. All firing operations require notification of chain of command.						
Gorrindo (FOBS) and Gray (FOBS) (T) will be working through Branches XII and XV and will check in and out with appropriate DIVS						
<b>8. Division/Group Communication Summary</b>						
Function	Channel	RX Frequency N/W	RX Tone/NAC	TX Frequency N/W	TX Tone/NAC	Mode
COMMAND	CMD 96	169.9625N	146.2	165.0500N	146.2	A
TACTICAL	NIFC T1	168.0500N		168.0500N		A
AIR TO GROUND	A/G CMD	167.9500N		167.9500N		A
AIR TO GROUND	A/G CMD E	166.6125N		166.6125N		A
AIR TO GROUND	A/G TAC E	169.2875N		169.2875N		A
AIR TO GROUND	CALCORD	156.0750N	156.7	156.0750N	156.7	A
AIR GUARD	EMERGENCY	168.6250N		168.6250N	110.9	A
<b>9. Prepared By (Resource Unit Leader)</b>		<b>Approved By (Planning Section Chief)</b>		<b>Date</b>	<b>Time</b>	
SCOTT LAZENBY (T)		JOE SCURI		09/12/2021	2200	

## Division/Group Assignment List (ICS 204 WF)

Controlled Unclassified Information//Basic

<b>1. Incident Name:</b>			<b>3.</b>			
CALDOR INCIDENT EAST ZONE			<b>Branch:</b>		<b>Division/Group</b>	
<b>2. Operational Period:</b>			<b>XV</b>		<b>QQ</b>	
Date/Time From: 09/13/2021 0700      MON		Date/Time To: 09/14/2021 0700      TUE				
<b>4. Operations Personnel</b>						
<b>OPERATIONS CHIEF</b>		CRAIG DAUGHERTY; BRIAN NEWMAN JOE GONZALES (T)		<b>BRANCH DIRECTOR</b>		DREW GRAHAM
<b>DIVISION/GROUP SUPERVISOR</b>		MARVIN ROYBAL JAMES SEARCY (T)		<b>BRANCH SAFETY</b>		
<b>5. Resources Assigned this Period</b>						
Strike Team / Task Force / Resource Designator		LWD	Leader	Number Persons	Drop Off PT./Time	Pick Up PT./Time
HC2IA BLACK EAGLES 2 C-50007		09/17	GUSTAVO SANTOYO- GALLEGOS	21	ICP HEAVENLY SKI RESORT/0700	ICP HEAVENLY SKI RESORT/1900
HC2IA TETON CREW C-50015		09/13	MICHAEL JACOB MCEWEN	20	ICP HEAVENLY SKI RESORT/0700	ICP HEAVENLY SKI RESORT/1900
HC2 PACIFIC COAST C-50003		09/17	RAMON CISNEROS	20	ICP HEAVENLY SKI RESORT/0700	ICP HEAVENLY SKI RESORT/1900
ENG3 UT CEDAR MTN FD 75 E-50012		09/17	PETER MANSON	4	ICP HEAVENLY SKI RESORT/0700	ICP HEAVENLY SKI RESORT/1900
WTT2 TDOX 25 E-50127		09/19	MARK NORWOOD	2	ICP HEAVENLY SKI RESORT/0700	ICP HEAVENLY SKI RESORT/1900
WTS1 ASAP SVC E-20015		09/19	D DIXON	1	ICP HEAVENLY SKI RESORT/0700	ICP HEAVENLY SKI RESORT/1900
WTS2 CHRIS MORRIS E-20681		09/24	CHRIS MORRIS	1	ICP HEAVENLY SKI RESORT/0700	ICP HEAVENLY SKI RESORT/1900
WTS2 DAHL & SONS E-20019		09/26	MARK DAHL	1	ICP HEAVENLY SKI RESORT/0700	ICP HEAVENLY SKI RESORT/1900
WTS2 MAINSTREAM SVC E-20006		09/18	MARK HUMPHREY	1	ICP HEAVENLY SKI RESORT/0700	ICP HEAVENLY SKI RESORT/1900
**DOZ2 HARD LOGGING E-20828		09/26	LUKE HALL	2	ICP HEAVENLY SKI RESORT/0700	ICP HEAVENLY SKI RESORT/1900
MAST COLEMAN ENVIRONMENTAL E-20035		09/18	PAUL LEUZINGER	2	ICP HEAVENLY SKI RESORT/0700	ICP HEAVENLY SKI RESORT/1900
HEQB O-20302		09/14	DOUG LINGEN	1	ICP HEAVENLY SKI RESORT/0700	ICP HEAVENLY SKI RESORT/1900
HEQB (T) O-20578		09/14	DARREN HANSEN	1	ICP HEAVENLY SKI RESORT/0700	ICP HEAVENLY SKI RESORT/1900
FAL1 MOEN TIMBER FALLING O-50089		09/18	MICHAEL MOEN	1	ICP HEAVENLY SKI RESORT/0700	ICP HEAVENLY SKI RESORT/1900
FAL1 A & F ENTERPRISES O-50088		09/18	ALEX BOKISH	1	ICP HEAVENLY SKI RESORT/0700	ICP HEAVENLY SKI RESORT/1900
<b>8. Division/Group Communication Summary</b>						
Function	Channel	RX Frequency N/W	RX Tone/NAC	TX Frequency N/W	TX Tone/NAC	Mode
COMMAND	CMD 67	172.0750N	146.2	162.2000N	146.2	A
TACTICAL	VFIRE 25	154.2875N	156.7	154.2875N	156.7	A
AIR TO GROUND	A/G CMD	167.9500N		167.9500N		A
AIR TO GROUND	A/G CMD E	166.6125N		166.6125N		A
AIR TO GROUND	A/G TAC E	169.2875N		169.2875N		A
AIR TO GROUND	CALCORD	156.0750N	156.7	156.0750N	156.7	A
AIR GUARD	EMERGENCY	168.6250N		168.6250N	110.9	A
<b>9. Prepared By (Resource Unit Leader)</b>			<b>Approved By (Planning Section Chief)</b>		<b>Date</b>	<b>Time</b>
DWAYNE PRESTON (T)			JOE SCURI		09/12/2021	2200

## Division/Group Assignment List (ICS 204 WF)

Controlled Unclassified Information//Basic

<b>1. Incident Name:</b>			<b>3.</b>			
CALDOR INCIDENT EAST ZONE			<b>Branch:</b>		<b>Division/Group</b>	
<b>2. Operational Period:</b>			<b>XV</b>		<b>QQ</b>	
Date/Time From:	Date/Time To:					
09/13/2021 0700	MON	09/14/2021 0700	TUE			
<b>4. Operations Personnel</b>						
<b>OPERATIONS CHIEF</b>		CRAIG DAUGHERTY; BRIAN NEWMAN JOE GONZALES (T)		<b>BRANCH DIRECTOR</b>	DREW GRAHAM	
<b>DIVISION/GROUP SUPERVISOR</b>		MARVIN ROYBAL JAMES SEARCY (T)		<b>BRANCH SAFETY</b>		
<b>5. Resources Assigned this Period</b>						
Strike Team / Task Force / Resource Designator	LWD	Leader	Number Persons	Drop Off PT./Time	Pick Up PT./Time	
<b>6. Control Operations/Work Assignments:</b>						
Utilize appropriate suppression methods to keep the fire within its current foot print while protecting life threats and impacts to infrastructure. Mop-up to the degree safe to do so and required for containment.						
<b>7. Special Instructions:</b>						
**Denotes 24 HR Shift						
Backhaul all unneeded supplies, nets, food, delivery items and trash. All firing operations require notification of chain of command.						
FOBS Gorrindo and FOBS (T) Grey will be working throughout Branches 12 and 15. They will check in and out with appropriate divisions.						
Darren Johnson (SOFR) DIVISION PP/CONT . Paul Tadlock (SOFR) DIVISION MM/QQ						
Division QQ Keith Hambrecht (READ) Mary Patterson (READ)						
<b>8. Division/Group Communication Summary</b>						
Function	Channel	RX Frequency N/W	RX Tone/NAC	TX Frequency N/W	TX Tone/NAC	Mode
COMMAND	CMD 67	172.0750N	146.2	162.2000N	146.2	A
TACTICAL	VFIRE 25	154.2875N	156.7	154.2875N	156.7	A
AIR TO GROUND	A/G CMD	167.9500N		167.9500N		A
AIR TO GROUND	A/G CMD E	166.6125N		166.6125N		A
AIR TO GROUND	A/G TAC E	169.2875N		169.2875N		A
AIR TO GROUND	CALCORD	156.0750N	156.7	156.0750N	156.7	A
AIR GUARD	EMERGENCY	168.6250N		168.6250N	110.9	A
<b>9. Prepared By (Resource Unit Leader)</b>			<b>Approved By (Planning Section Chief)</b>		<b>Date</b>	<b>Time</b>
DWAYNE PRESTON (T)			JOE SCURI		09/12/2021	2200

31 AIR OPERATIONS SUMMARY ICS-220					Time Prepared 1800	Date Prepared Sunday, September 12, 2021	Prepared By Mike Deacon/Brad Idol <i>M Deacon</i>													
Incident Name / Number Caldor Incident - West Zone / CA-ENF-024030		Sunrise 6:43	Startup 7:13	Cutoff 18:43	Sunset 19:13	Shutdown 19:43	Operational Period - Date Monday September 13, 2021		Operational Period - Time 0700-0700											
<b>General Remarks, Safety Notes, Hazards, Air Operations Special Equipment, etc.</b> TRACK ALL DIPSITE LOCATIONS / NUMBER OF DIPS / GALLONS TAKEN. TRACK ALL DROP LOCATIONS / NUMBER OF DROPS / GALLONS DROPPED All GPS DATA TO BE COLLECTED IN <u>DEGREES. MINUTES. DECIMAL MINUTES</u> FORMAT.  <i>AVOID Aerial Application of Retardant / Foam / Agent within 300' of Waterways, Bodies of Water, etc.            If Retardant / Foam / Agent is Dropped Within These Areas Immediately Notify the AOB and Provide the Following Information: Lat / Long, Estimated Number of Gallons and a Map Detailing The Area.</i>					<b>Helibase Information</b> Name Placerville Latitude 38 43.478 Longitude 120 45.180 Name Truckee Latitude 39 19.288 Longitude 120 8.933 Name M45  38 43.847/119 46.147		<b>TFR Information</b> Request # A-510 Polygon: NM Altitude: 13,500 MSL Centerpoint: Lat Long NOTAMS: 1/6722 Frequency 118.6250  <a href="http://tfr.faa.gov/tfr2/list.html">http://tfr.faa.gov/tfr2/list.html</a>		<b>Rescue Ship Information</b> <table border="1"> <thead> <tr> <th>Day Hoist</th> <th>Night Hoist</th> </tr> </thead> <tbody> <tr> <td>Name GUARD 841</td> <td>SAME</td> </tr> <tr> <td>Phone 707-391-6784</td> <td></td> </tr> <tr> <td>Make/Model UH-60</td> <td></td> </tr> <tr> <td>Location RNO</td> <td></td> </tr> </tbody> </table> Request Procedure for These Aircraft:  Incident Communications  See Medical Plan For Additional Info		Day Hoist	Night Hoist	Name GUARD 841	SAME	Phone 707-391-6784		Make/Model UH-60		Location RNO	
Day Hoist	Night Hoist																			
Name GUARD 841	SAME																			
Phone 707-391-6784																				
Make/Model UH-60																				
Location RNO																				
		ALPINE	TVL-S. Lake Tahoe	PACIFIC																
		38 43.877 119 46.107	38 53.36 / 119 59.41 Phone # 208-713-7630	38 50.36 120 24.28																
Frequencies	RX	Tone	TX	Tone	AM / FM	Position	Name	Phone	Trainee	Phone										
A/G COMMAND (WEST)	167.9500		167.9500		FM	AOBD (WEST)	Mike Deacon	530-412-1509												
A/G COMMAND (EAST)	166.6125		166.6125		FM	AOBD (WEST)	Brad Idol	805-338-4715												
A/G - TACTICAL (WEST)	164.1375		164.1375		FM	AOBD (EAST)	Wes Shook	805-458-1970												
A/G - TACTICAL (EAST)	169.2875		169.2875		FM	AOBD (EAST)	Mark Empey	928-2451798												
WEST ROTOR VIC	124.0750		124.0750		AM	ASGS (WEST)			Phil Michael	916-221-2071										
EAST ROTOR VIC	133.0250		133.0250		AM	ASGS (EAST)														
COMMAND-EAST/WEST	SEE	COMM	PLAN	205's	FM															
AIR TACTICS	163.3375		163.3375		FM	HEBM (PVF)	Ezra Johnson	805-610-3415	(PLACERVILLE)											
AIR/AIR BRIEFING	126.3750		126.3750		AM	HEBM (TRK)	Kelly Harper	408-981-8811	(TRUCKEE)											
TFR	118.6250		118.6250		AM	HEBM (M45)	Rex Sundstrom	530-575-0368	(ALPINE)											
TOLC	123.7250		123.7250		AM	HEBM (TVL)	Cammie Roy	208-713-7630	(SOUTH LAKE TAHOE)											
DECK (PVF) (M45) (TVL)	163.1000		163.1000		FM															
DECK (TRK)	168.3500		168.3500		FM	HLCO	Nick Welch	707-508-5721	(PLACERVILLE)											
CALCORD - MEDICAL	156.0750	156.7 (6)	156.0750	156.7 (6)	FM	HLCO	Matt Lynde	530-941-4600	(TAHOE)											
AIRGUARD - Emergency Only	168.6250	110.9 (1)	168.6250		FM	HLCO	Jay Walter	623-696-8532	(Alpine)											
HELICOPTERS ( Use page 2 if Needed )																				
FAA #	Type	Make/Model	Helibase	Avail	Start	Remarks	FAA #	Type	Make/Model	Helibase	Avail	Start	Remarks							
133TH	I	UH-60	TVL	0800	0800	LONG EU	804PJ	I	UH-60	TRK	0800	0800	LONG CWN							
948CH	I	CH-47	TVL	0800	0800	BUCKET EU	14HX	III	BELL 407	TRK	0800	0800	RECONBUCKET EU							
205PT	II	BELL 205 A++	TVL	0800	0800	LONG EU														
2DH	II	BELL UH-1H	TVL	0800	0800	LONG CWN	1048Y	I	S-61	PVF	0800	0800	TANK EU							
205TA	II	BELL 205 A1	TVL	0800	0800	LONG CWN	11NE	II	BELL UH1B	PVF	0800	0800	LONG CWN							
509	II	BELL 209	TVL	0800	0800	RECON/INTEL EU	61WL	III	A-STAR 350	PVF	0800	0800	RECONBUCKET CWN							
5AE	III	A-STAR 350	TVL	0800	0800	RECON/LONG EU	237BS	III	A-STAR 350	PVF	0800	0800	RECONBUCKET EU							
							516	II	BELL 212 HP	PACIFIC	0800	0800	LONG EU							
3173U	I	S-61	M45	0800	0800	TANK EU														
473CH	I	CH-47	M45	0800	0800	BUCKET CWN														
669RH	I	KAMAN 1200	M45	0800	0800	LONG EU														
51BH	I	UH-60	M45	0800	0800	LONG CWN														
715HT	I	CH-54	M45	0800	0800	TANK EU														
669H	II	BELL 205 A ++	M45	0800	0800	RAPPELLONG EU														
FIXED WING ( Use Page 2 if Needed )																				
FAA #	Type	Make/Model	Base	Avail	Start	Remarks	FAA #	Type	Make/Model	Base	Avail	Start	Remarks							
TBD				0800	0800	ATGS														
							31													





# ICS 205 - INCIDENT RADIO COMMUNICATIONS PLAN

CONTROLLED UNCLASSIFIED  
INFORMATION//BASIC

<b>1. Incident Name:</b> Caldor Incident - West Zone BRANCHES 1 / 10 : WEST Z1	<b>2. Date/Time Prepared</b> Date: 09/12/2021 Time: 1600	<b>3. Operational Period:</b> Date From: 09/13/21      Date To: 09/14/21 Time From: 0700          Time To: 0700
--	--	---

4. Communications								
Ch#	Function	Name	Assigned To	Rx Freq	Rx Tone	Tx Freq	Tx Tone	Notes
1	COMMAND	CMD 105	WEST BRANCHES	172.4500	114.8 (T11)	166.9375	114.8 (T11)	SACRAMENTO PEAK
2	COMMAND	CMD 109	WEST BRANCHES	170.3875	114.8 (T11)	162.1750	114.8 (T11)	BIG HILL
3	COMMAND	CMD 104	WEST BRANCHES	170.7625	114.8 (T11)	165.6250	114.8 (T11)	NORTH OF HWY 50 BETWEEN DP 21 AND DP 24
4	COMMAND	CMD 1	WEST BRANCHES	170.9750	114.8 (T11)	168.7000	114.8 (T11)	LEEK SPRINGS
5	COMMAND	CMD 11	WEST BRANCHES	170.6875	114.8 (T11)	166.5750	114.8 (T11)	GRIZZLY FLATS AREA
6	COMMAND	CMD 113	WEST BRANCHES	170.3125	114.8 (T11)	165.6750	114.8 (T11)	KIRKWOOD MOUNTAIN
7	COMMAND	CMD 116	WEST BRANCHES	171.0375	114.8 (T11)	162.5875	114.8 (T11)	SCOUT PEAK
8	TACTICAL	VTAC11	DIV A / D	151.1375	156.7 (T6)	151.1375	156.7 (T6)	IDENTIFY AS DIVISION ALPHA
9	TACTICAL	VTAC13	DIV F / G / H	158.7375	156.7 (T6)	158.7375	156.7 (T6)	IDENTIFY AS DIVISION FOXTROT
10	TACTICAL	CDF T26	FSR GROUPS	159.2925	192.8 (T16)	159.2925	192.8 (T16)	FSR GROUPS
11	TACTICAL	CDF T27	DIV I	159.3075	192.8 (T16)	159.3075	192.8 (T16)	
12	TACTICAL	NIFC T1	DIV AA	168.0500		168.0500		EAST ZONE TACTICAL
13	A/G CMD	A/G CMD	WEST	167.9500		167.9500		WEST ZONE A/G CMD
14	AIR TO GROUND	A/G TAC	WEST	164.1375		164.1375		WEST ZONE A/G TAC
15	MEDICAL	CALCORD	ALL ZONES	156.0750	156.7 (T6)	156.0750	156.7 (T6)	EMS COORDINATION ONLY
16	EMERGENCY	GUARD 8	ALL ZONES	168.6250		168.6250	110.9 (T1)	EMERGENCY USE ONLY
17								
18								
19								
20	EMERGENCY	GUARD 8	ALL ZONES	168.6250		168.6250	110.9 (T1)	EMERGENCY USE ONLY

**5. Special Instructions**  
 TO CONFIRM YOU HAVE THE MOST CURRENT CLONE, ENSURE YOUR DISPLAY OF CHANNEL 16 OR 20 MATCHES CHANNEL 16 OR 20 OF THE 205 - HEIGHT AND POWER ARE KEY WHEN USING RADIOS; BE AT A HIGH POINT, USE A MOBILE IF POSSIBLE, AND USE RADIO RELAYS WHEN NEEDED.

<b>6. Prepared by (Communications Unit Leader): Name:</b> John McCormick      33	Signature:
--	------------

# ICS 205 - INCIDENT RADIO COMMUNICATIONS PLAN

CONTROLLED UNCLASSIFIED  
INFORMATION//BASIC

<b>1. Incident Name:</b> Caldor Incident - West Zone BRANCHES 20 / 30 : WEST Z2	<b>2. Date/Time Prepared</b> Date: 09/12/2021 Time: 1600	<b>3. Operational Period:</b> Date From: 09/13/21      Date To: 09/14/21 Time From: 0700          Time To: 0700
---	--	---

4. Communications								
Ch#	Function	Name	Assigned To	Rx Freq	Rx Tone	Tx Freq	Tx Tone	Notes
1	COMMAND	CMD 105	WEST BRANCHES	172.4500	114.8 (T11)	166.9375	114.8 (T11)	SACRAMENTO PEAK
2	COMMAND	CMD 109	WEST BRANCHES	170.3875	114.8 (T11)	162.1750	114.8 (T11)	BIG HILL
3	COMMAND	CMD 104	WEST BRANCHES	170.7625	114.8 (T11)	165.6250	114.8 (T11)	NORTH OF HWY 50 BETWEEN DP 21 AND DP 24
4	COMMAND	CMD 1	WEST BRANCHES	170.9750	114.8 (T11)	168.7000	114.8 (T11)	LEEK SPRINGS
5	COMMAND	CMD 11	WEST BRANCHES	170.6875	114.8 (T11)	166.5750	114.8 (T11)	GRIZZLY FLATS AREA
6	COMMAND	CMD 113	WEST BRANCHES	170.3125	114.8 (T11)	165.6750	114.8 (T11)	KIRKWOOD MOUNTAIN
7	COMMAND	CMD 116	WEST BRANCHES	171.0375	114.8 (T11)	162.5875	114.8 (T11)	SCOUT PEAK
8	TACTICAL	CDF T28	DIV N/P	151.1825	192.8 (T16)	151.1825	192.8 (T16)	IDENTIFY AS DIVISION NOVEMBER
9								
10	TACTICAL	CDF T30	DIV R / T / U / W	151.3925	192.8 (T16)	151.3925	192.8 (T16)	IDENTIFY AS DIVISION ROMEO
11								
12	TACTICAL	NIFC T1	DIV AA	168.0500		168.0500		EAST ZONE TACTICAL
13	A/G CMD	A/G CMD	WEST	167.9500		167.9500		WEST ZONE A/G CMD
14	AIR TO GROUND	A/G TAC	WEST	164.1375		164.1375		WEST ZONE A/G TAC
15	MEDICAL	CALCORD	ALL ZONE	156.0750	156.7 (T6)	156.0750	156.7 (T6)	EMS COORDINATION ONLY
16	EMERGENCY	GUARD 8	ALL ZONE	168.6250		168.6250	110.9 (T1)	EMERGENCY USE ONLY
17								
18								
19								
20	EMERGENCY	GUARD 8	ALL ZONES	168.6250		168.6250	110.9 (T1)	EMERGENCY USE ONLY

**5. Special Instructions**  
 TO CONFIRM YOU HAVE THE MOST CURRENT CLONE, ENSURE YOUR DISPLAY OF CHANNEL 16 OR 20 MATCHES CHANNEL 16 OR 20 OF THE 205 - HEIGHT AND POWER ARE KEY WHEN USING RADIOS; BE AT A HIGH POINT, USE A MOBILE IF POSSIBLE, AND USE RADIO RELAYS WHEN NEEDED.

<b>6. Prepared by (Communications Unit Leader): Name: John McCormick</b>	34	Signature:
--	----	------------

# ICS 205 - INCIDENT RADIO COMMUNICATIONS PLAN

CONTROLLED UNCLASSIFIED  
INFORMATION//BASIC

<b>1. Incident Name:</b> <p style="text-align: center;"><b>Caldor Incident</b> <b>AEU/ENF INITIAL ATTACK ONLY</b></p>	<b>2. Date/Time Prepared</b> Date: 09/12/2021 Time: 1600	<b>3. Operational Period:</b> Date From: 09/13/21      Date To: 09/14/21 Time From: 0700              Time To: 0700
--	--	---

4. Communications								
Ch#	Function	Name	Assigned To	Rx Freq	Rx Tone	Tx Freq	Tx Tone	Notes
1	COMMAND	ENFADM 1		172.3250N	156.7	165.2250N	110.9	FOREST ADMIN Tone 1-Alder
2	COMMAND	ENFADM 2		172.3250N	156.7	165.2250N	123.0	FOREST ADMIN Tone 2-Leek Springs
3	COMMAND	ENFADM 4		172.3250N	156.7	165.2250N	136.5	FOREST ADMIN Tone 4-Big Hill
4	COMMAND	ENFADM 6		172.3250N	156.7	165.2250N	156.7	FOREST ADMIN Tone 6-Echo Summit
5	COMMAND	XAM CT10		154.7625N	123.0	159.1800N	107.2	AMADOR CMD Tone 10-Leek Springs
6	COMMAND	XAM CT11		154.7625N	123.0	159.1800N	114.8	AMADOR CMD Tone 11-Zion Mountain
7	COMMAND	XED CT11		155.9025N	186.2	159.2775N	114.8	EL DORADO CMD Tone 11-Union
8	COMMAND	XED CT1		155.9025N	186.2	159.2775N	110.9	EL DORADO CMD Tone 1-Alder
9	COMMAND	XED CT4		155.9025N	186.2	159.2775N	136.5	EL DORADO CMD Tone 4-Big Hill
10	TACTICAL	R5 T4		166.5500N		166.5500N		REGION 5 TAC 4
11	TACTICAL	R5 T5		167.1125N		167.1125N		REGION 5 TAC 5
12	TACTICAL	R5 T6		168.2375N		168.2375N		REGION 5 TAC 6
13	TACTICAL	CDF T2		151.1600N	192.8	151.1600N	192.8	WEST ZONE A/G CMD
14	TACTICAL	CDF T8		151.3700N	192.8	151.3700N	192.8	WEST ZONE A/G TAC
15	AIR TO GROUND	A/G TAC	AIR TO GROUND	164.1375N		164.1375N		
16	EMERGENCY	GUARD 8	EMERGENCY	168.6250N		168.6250N	110.9	EMERGENCY USE ONLY
17								
18								
19								
20	EMERGENCY	GUARD 8	EMERGENCY	168.6250N		168.6250N	110.9	EMERGENCY USE ONLY

**5. Special Instructions**

**TO CONFIRM YOU HAVE THE MOST CURRENT CLONE, ENSURE YOUR DISPLAY OF CHANNEL 16 OR 20 MATCHES CHANNEL 16 OR 20 OF THE 205 - HEIGHT AND POWER ARE KEY WHEN USING RADIOS; BE AT A HIGH POINT, USE A MOBILE IF POSSIBLE, AND USE RADIO RELAYS WHEN NEEDED.**

<b>6. Prepared by (Communications Unit Leader): Name: John McCormick</b>	35	Signature:
ICS 205 - CONTROLLED UNCLASSIFIED INFORMATION//BASIC		Date/Time: 09/12/21 1830

# **ATTENTION:**

All Line orders MUST be submitted through Caldor Communications on Command or by phone at (916) 883-0933

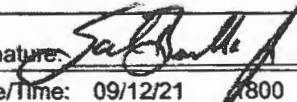
Line orders requested after 1900 will be delivered the following day.

Thank you,

COML.


# ICS 205 - INCIDENT RADIO COMMUNICATIONS PLAN

CONTROLLED UNCLASSIFIED  
INFORMATION//BASIC

<b>1. Incident Name:</b> EAST CALDOR			<b>2. Date/Time Prepared</b> Date: 09/12/2021 Time: 1800			<b>3. Operational Period:</b> Date From: 09/13/21 Date To: 09/14/21 Time From: 0700 Time To: 0700		
<b>4. Communications</b>								
Ch#	Function	Name	Assigned To	Rx Freq	Rx Tone	Tx Freq	Tx Tone	Notes
1	COMMAND	CMD 5	EAST BRANCHES	169.7500N	146.2	167.1000N	146.2	MONUMENT PK LINKED W/ C67,C93,C96
2	COMMAND	CMD 93	EAST BRANCHES	166.6875N	146.2	162.9375N	146.2	SCOUT LINKED W/C5,C67,C93,C96
3	COMMAND	CMD 67	EAST BRANCHES	172.0750N	146.2	162.2000N	146.2	KIRKWOOD MT, LINKED W/C5,C93,C96
4	COMMAND	CMD 96	EAST BRANCHES	169.9625N	146.2	165.0500N	146.2	PYRAMID PEAK LINKED W/C5,C93,C67
5	COMMAND	CMD 116	WEST BRANCHES	171.0375N	114.8	162.5875N	114.8	WEST COMMUNICATIONS
6	TACTICAL	NIFC T1	DIV AA	168.0500N		168.0500N		DIV AA/PP
7	TACTICAL	NIFC T6	DIV DD	166.7750N		166.7750N		
8	TACTICAL	NIFC T3	DIV MM	168.6000N		168.6000N		
9	TACTICAL	NIFC T7	GROUP STRUCTURE	168.2500N		168.2500N		GROUP STRUCTURE NIGHT
10	TACTICAL	VFIRE 24	DIV PP	154.2725N	156.7	154.2725N	156.7	CONT./SUPPRESSION REPAIR
11	TACTICAL	VFIRE 25	DIV QQ	154.2875N	156.7	154.2875N	156.7	NIGHT DIV QQ
12	A/G CMD WEST	A/G CMD	WEST	167.9500N		167.9500N		WEST ZONE A/G CMD
13	A/G CMD EAST	A/G CMDE	EAST	166.6125N		166.6125N		EAST ZONE A/G CMD
14	AIR TO GROUND	A/G TACE	EAST DIVISION	169.2875N		169.2875N		EAST ZONE A/G TAC
15	COORDINATION	CALCORD	ALL BRANCHES	156.0750N	156.7	156.0750N	156.7	MEDICAL COORDINATION
16	EMERGENCY	GUARD 8	ALL BRANCHES	168.6250N		168.6250N	110.9	EMERGENCY USE ONLY
17								
18								
19								
20	EMERGENCY	GUARD 8	ALL BRANCHES	168.6250N		168.6250N	110.9	EMERGENCY USE ONLY
<b>5. Special Instructions LAST CLONE SEPT 8,2021</b>								
EAST COMMUNICATION 208-850-8987, OR 208-850-2701								
<b>6. Prepared by: Name: SAL BONILLA JR.,K.JANES,T.MAGUIRE COM1'S</b>						Signature: 		
ICS 205 - CONTROLLED UNCLASSIFIED INFORMATION//BASIC						Date/Time: 09/12/21 1800		

# ICS 205 - INCIDENT RADIO COMMUNICATIONS PLAN

CONTROLLED UNCLASSIFIED  
INFORMATION//BASIC

<b>1. Incident Name:</b> TAHOE BASIN I/A			<b>2. Date/Time Prepared</b> Date: 09/12/2021 Time:			<b>3. Operational Period:</b> Date From: 09/13/21    Date To: 09/14/21 Time From: 0700        Time To: 0700		
<b>4. Communications</b>								
Ch#	Function	Name	Assigned To	Rx Freq	Rx Tone	Tx Freq	Tx Tone	Notes
1	FOREST NET	ENF T9	ALL DIVS	171.5250N	156.7	162.7500N	T9-100.0	HAWKINS PK
2	FOREST NET	TMU T2	ALL DIVS	172.3750N	156.7	164.9625N	T2-123.0	EAST PK
3	FOREST NET	HTF T3	ALL DIVS	173.7750		165.7500N	T3-131.8	HAWKINS PK
4	TACTICAL	NIFC T1	ALL DIVS	168.0500N		168.0500N		
5	TACTICAL	NIFC T2	ALL DIVS	168.200N		168.200N		
6	TACTICAL	R5T4	ALL DIVS	166.5500N		166.5500N		
7	TACTICAL	R5T5	ALL DIVS	167.1125N		167.1125N		
8	TACTICAL	VFIRE22	ALL DIVS	154.2650N	156.7	154.2650N	156.7	
9	TACTICAL	VFIRE23	ALL DIVS	154.2950N	156.7	154.2950N	156.7	
10	TACTICAL	VFIRE 26	ALL DIVS	154.3025N	156.7	154.3025N	156.7	
11	TACTICAL	CCD SOA	ALL DIVS	171.6750N		171.6750N		AKA" BLM SOA"
12	TACTICAL	NDF RED 1	ALL DIVS	159.3450N		159.3450N		
13	AIR TO GROUND	A/G 14	ALL DIVS	167.5000N		167.5000N		I/A A/G-ENF/TMU
14	AIR TO GROUND	A/G 51	ALL DIVS	168.3125N		168.3125N		I/A A/G-SIERRA FRONT
15	MEDICAL	CALCORD	ALL DIVS	156.0750N	156.7	156.0750N	156.7	MEDICAL COORDINATION
16	EMERGENCY	GUARD	EMERGENCY	168.6250N		168.6250N	110.9	EMERGENCY CONTACT
17								
18								
19								
20	EMERGENCY	GUARD	EMERGENCY	168.6250N		168.6250N	110.9	EMERGENCY CONTACT
<b>5. Special Instructions</b>								
<b>6. Prepared by (Communications Unit Leader): Name: SAL BONILLA JR</b>						Signature: 		
<b>ICS 205 - CONTROLLED UNCLASSIFIED INFORMATION//BASIC</b>						NIMS IAP Date/Time: 09/12/21		

## **CALDOR INCIDENT CA-ENF-024030 Fire Suppression Repair**

### **OBJECTIVES**

- Repair damage caused by suppression actions.
- Prevent future environmental and public safety risks that exist due to suppression actions.
- Protect economic, natural, cultural and heritage resources.

Frequently coordinate repair efforts with REAFs or Suppression Repair Specialists on repair priorities and specific guidelines. The following standards are to be met during suppression repair operations:

### **Roads**

- Install waterbars where waterbars previously existed.
- Install or maintain rolling dips where a rolling dip previously existed.
- Clean culverts plugged with soil and rock resulting from fire suppression actions.
- Remove all slash and debris from culvert inlets\outlets resulting from suppression actions.
- Clean and grade ditch lines and lead off ditches as necessary.
- Water roads for dust abatement.
- Remove sediment from watercourse crossing locations and stabilize watercourse crossing approaches as appropriate for pre-existing road use.

### **Hand Lines, Dozer Lines, and Safety Zones**

- Install waterbars. Coordinate with REAFs or Suppression Repair Specialists for guidelines.
- Interior lines and contingency lines that are no longer needed by the incident shall have vegetative material pulled back onto the soil surface (FRA only).
- Remove sediment from watercourse crossing locations and stabilize watercourse crossing approaches with scattered brush or other soil stabilization material.
- Block access to hand lines and dozer lines to prevent unauthorized vehicle use.

### **Vegetative Debris (activity fuels) Treatment**

- Concentrations of slash created by fire suppression activities along roadways and among structures should be treated to reduce fire hazard. Treatments include mastication, lopping and scattering, and chipping. Where feasible, vegetation treated by mastication or lopping and scattering should not exceed 18 inches in height. Chipped material should be spread across the cleared area. Chip piles should not exceed 6 inches in depth.
- Concentrations of slash within 100 feet of habitable structures should be removed or chipped.

### **Fences**

- Repair fences damaged during fire suppression operations. Intent of fence repair is to prevent livestock or other animals from escaping.

### **Compensation Claims**

- For all other property damage beyond the scope of the Suppression Repair Plan, please document the damage on an ICS 213 and submit it to the Incident Management Team Compensation Claims Unit.



# INCIDENT TRAINING MESSAGE

**All trainees on the incident need to check in with  
the Training Specialist**

- Training Specialist is located on “Main Street” at the ICP

**DEMOBING trainees need to close out with the  
Training Specialist in order to receive  
documented credit for your assignment**

- Bring a completed and signed ICS 225
- Evaluator’s recommendation Letter
- A completed Exit Interview Form
- Position Task Book

*ALL forms are available at the training trailer*

**Trainers, if you leave the incident before your trainee you will  
need to complete a Performance Evaluation for the time your  
trainee *was* assigned to you.**

Claudia Soiza – 949.632.7813

Training Specialist



# CAL FIRE INCIDENT MANAGEMENT TEAM 2

Charlie Blankenheim– INCIDENT COMMANDER



## DEMOBILIZATION PLAN - SUMMARY CALDOR FIRE INCIDENT CA-ENF-024030

### GENERAL INFORMATION

The Demobilization Plan is developed to facilitate the orderly removal and checkout of resources on the incident. By definition, surplus personnel are available for release if they have rested for a minimum of 8 hours, are cleaned up, outfitted and have a vehicle ready to depart to their next destination.

### GENERAL GUIDELINES

- **NO RESOURCES WILL LEAVE THE INCIDENT UNTIL AUTHORIZED TO DO SO BY THE DEMOB UNIT.**
- Efforts will be made to ensure that all released personnel arrive at their destination prior to 2200 hours.
- All Resources will arrive at the Demobilizations Unit at their scheduled time Only.
- All government and hired vehicles leaving the incident will have a safety inspection. If a vehicle is within 1,000 miles of a "B" service, it is the responsibility of the resource to contact Ground Support and have an oil change prior to their scheduled demobilization time.
- **All Rental Vehicles will receive a safety inspection prior to leaving the incident.**
- All trainees are to keep their time up to date and report to the Training Specialist with their task books and evaluations prior to completion of the demobilization process.
- All strike team leaders are responsible to call **North Ops at 1-530-224-2466** immediately upon being released from the incident

### RESPONSIBILITIES

**Unit Leaders** will declare resources excess to their **Section Chief**. **Section Chiefs** will declare excess resources to the Planning Section Chief through the **Resource Unit Leader**. This should be done 36 hours in advance of anticipated release. **Use the Declaration of Excess Resources sheet or General Message Form (ICS-213) to list all excess resources.** Include the resource name, request number, name of person, date and time of declared excess, and time in which the resource will be eligible to leave. Send to the **RESOURCE UNIT** where the resource will be determined to be surplus to the incident. Surplus resources will then be able to report to the **DEMOB UNIT**, receive a Demobilization Checkout Form (ICS 221), get the appropriate ICS 221 signatures, and then return the completed ICS 221 to the **DEMOB UNIT** prior to final release or reassignment. Resources are not to contact **South Ops** or the expanded dispatch center unless instructed to do so by the Demobilization Unit.

### RELEASE PRIORITIES

1. **Organized fire departments**
2. **OES engines**
3. **Hired personnel and equipment**
4. **Other agencies (USFS, BLM, etc.)**
5. **Out of region CAL FIRE forces**
6. **Within Region CAL FIRE Forces**
7. **Unit CAL FIRE Forces**

### TRAVEL INFORMATION

All resources will meet agency specific requirements on hours of travel per day. For CAL FIRE hand crews, a full 24 hour reset period shall be adhered to before departing from the incident. After a crew's last operational period they shall begin the demobilization release procedure during their 24 hour off shift. In addition, they must use the following complete 24 hour period as reset time before they depart from the incident.



## ***FINANCE MESSAGE***



***CAL FIRE EMPLOYEE TIME- Computers are available next to the TIME building. Please drop off personnel updates.***

***DIVISION/GROUP SUPERVISORS – FILL OUT THE SHIFT TICKETS AND TURN IN DAILY.... Please see the examples if you have any questions. HEMS hired - equipment need to be done with CALFIRE Shift Tickets..... Ensure there is a REQUEST number on every Shift Ticket***

***HIRED EQUIPMENT SUPPLIERS- ensure you get a copy of your shift ticket and you have turned your agreement in with the TIME unit. This goes for in camp equipment too...***

***If you have been assigned to demob from the West Zone follow this QR code to get a start for your TIME UNIT the Payment process***



***COMP/CLAIMS issues- Document all incidents on a 213 at time of incident and proper Department forms as needed. Contact 925-588-6902 if you have questions.***

***Federal Resources please see federal message***

# Federal Finance Message

## TIME COLLECTION:

While electronic submission of CTR's and Shift tickets is preferred, Federal Incident Finance will also accept hard-copy documents. Please see the Federal Finance Box located at the Finance Section Chief trailer at Placerville Camp, or near Ticket Windows at Heavenly Camp.

- ◆ PLEASE INCLUDE RO IN SUBJECT LINE OF EMAIL, PLEASE DOCUMENT H-PAY FOR DUTY BEING PERFORMED
- ◆ PLEASE MARK YOUR LAST DAY AS **FINAL** WHEN YOU ARE DEMOBING
- ◆ PLEASE MAKE EVERY EFFORT TO TURN IN ALL CTR's AND SHIFT TICKETS DAILY.
- ◆ PLEASE INCLUDE DOCUMENTATION ON CTR OR SHIFT TICKET OF SUPERVISOR APPROVAL OF LODGING AND/OR MEAL REINBURSMENT, IN ADDTION TO RECEIPTS
- ◆ PLEASE INCLUDE YOUR RESOURCE ORDER # ON ALL DOCUMENTATION SUBMITTED, INCLUDING RECEIPTS.
- ◆ IF EQUIPMENT HAS BEEN ASSIGNED MORE THAN 14 DAYS, FEEL FREE TO CONTACT US TO REQUEST AN INTERIM/PROGRESS INVOICE PAYMENT.
- ◆ PLEASE ENSURE YOU INCLUDE LOCATION OF WHERE YOU ARE WORKING (BRANCH OR DIVISION) ON CTR OR SHIFT TICKET

## FINANCE CHECK IN:

- ◆ PLEASE ENSURE THE BELOW DOCUMENTS ARE EMAILED TO FINANCE WITH RO NOTED:

<b>Agency Equipment/Crews:</b>	<b>Overhead:</b>	<b>Contract Equipment/Contract Crews:</b>	<b>Cooperator:</b>
<ul style="list-style-type: none"> <li>• Manifest</li> <li>• Resource Order</li> <li>• CTR's</li> </ul>	<ul style="list-style-type: none"> <li>• Resource Order</li> <li>• AD Hire Form (If an AD)</li> <li>• CTR's</li> </ul>	<ul style="list-style-type: none"> <li>• Agreement/Manifest</li> <li>• Resource Order</li> <li>• Shift Ticket</li> <li>• Inspection Forms</li> </ul>	<ul style="list-style-type: none"> <li>• Cooperative Agreement</li> <li>• Resource Order</li> <li>• Shift Ticket</li> <li>• Inspection Forms</li> </ul>

# CALDOR FEDERAL FINANCE PROCEDURES



Finance Email: [2021.caldor.finance@firenet.gov](mailto:2021.caldor.finance@firenet.gov)

Finance Hotline: 530-330-5450

## Directions for emailing Documents:

<p><b>Federal Contract Resources</b></p> <p>Send To: <a href="mailto:2021.caldor.finance@firenet.gov">2021.caldor.finance@firenet.gov</a>  <b>SUBJECT: Include Key Word: <i>Equipment</i></b></p>	<p><b>Federal Overhead and Crews</b></p> <p>Send To: <a href="mailto:2021.caldor.finance@firenet.gov">2021.caldor.finance@firenet.gov</a>  <b>SUBJECT: Include Key Word: <i>Time</i></b></p>
---	--

## DOCUMENTS TO EMAIL TO FINANCE

	<p><b>Federal Overhead and Crews</b></p>	<p>Regular Government Personnel &amp; ADs attachments:  <b>@Check-In:</b> Crew Manifests, MOUs, or Cooperative Agreement (if applies), AD Casual Hire Sheet/RO  <b>Daily:</b> Crew Time Report (CTR), Shift Ticket (<i>when applies</i>), receipts(fuel issues, travel receipts, etc.)  <b>@Demob:</b> Signed OF288, Final Equipment Use Invoice</p>
	<p><b>Federal Contract Resources</b></p>	<p>Private: Contractor Attachments:  <b>@Check-In:</b> Resource Order, Full Contract/Agreement, Certifications (<i>if required</i>), Pre-Inspection  <b>Daily:</b> SHIFT Tickets, receipts (fuel issues, claims, etc.)  <b>@Demob:</b> Contractor Evaluations, Final Shift Tickets and receipt for Addition/Deductions, Post-Inspection, Final Signed Invoices</p>

## FEDERAL FINANCE DEMOB PROCEDURES

All Resources will be sent their **DRAFT OF-288/OF-286's** via the Finance email. 12 hours will be provided to allow the resource to review their document and reply back to Finance with the statement "No Corrections Necessary" or a description of any issues. After Finance receives the email, any discrepancies will be resolved. Next, the resource is sent the **FINAL DOCUMENT** for signature. They will then email the signed document back to Finance, if able. Finance will then sign the **FINAL DOCUMENT** and email it back to the resource. This completes the process.

**24HR LINE RESOURCE - 2 OPERATOR**

EMERGENCY SHIFT TICKET and EVALUATION FORM				Contractor Name <b>THE BEST DOZERS LLC</b>	
The responsible Government Officer will complete this form each shift.					
Incident or Project Name <b>CALDOR</b>	Incident Number <b>F21CAENF024030</b>	Request Number <b>E-444</b>	Operator #1 <b>FIRST &amp; LAST</b>	Operator #2 <b>FIRST &amp; LAST</b>	
Agreement Number <b>CALDOR</b>	Equipment Make <b>MANU-0000015953</b>	Equipment Model / Type <b>TRANSPORT 18 WHEEL</b>	Operator Furnished By: <input checked="" type="checkbox"/> Contractor <input type="checkbox"/> Government		
Serial Number <b>COMPLETE VIN#</b>	License Number <b>12345A1</b>		Operating Supplies Furnished By: <input type="checkbox"/> Contractor <input type="checkbox"/> Government		
			Equipment Status Inspected <input checked="" type="checkbox"/> Under Agreement		
Date Mo : Day	Start	Stop	Work	Hours (Circle)	Days / Miles
9/28	0701	2400	17	8	DIV X
9/29	0001	0700	7	8	DIV X
Vendor Rating			Sect. Rep. Name and Position - PRINT		
Poor	Avg.	Good	Exp.	N/A	Print Your Name
KPI Performance Expectations			Sect. Rep. Signature		
Equipment in Safe Working Condition			Your Signature		
Operator Skill Level			Contractor Signature		
Operator's Safety			John Smith		
Operator's Cooperation Level			Date		
Overall Performance			Time		
			9/29/20		
			0700		
			CAL FIRE 287 (Rev. 5/2011)		

**24HR / 12HR TRANSITION SHIFT TICKET**

EMERGENCY SHIFT TICKET and EVALUATION FORM				Contractor Name <b>THE BEST DOZERS LLC</b>	
The responsible Government Officer will complete this form each shift.					
Incident or Project Name <b>CALDOR</b>	Incident Number <b>F21CAENF024030</b>	Request Number <b>E-444</b>	Operator #1 <b>FIRST &amp; LAST</b>	Operator #2 <b>FIRST &amp; LAST</b>	
Agreement Number <b>CALDOR</b>	Equipment Make <b>MANU-0000015953</b>	Equipment Model / Type <b>TRANSPORT 18 WHEEL</b>	Operator Furnished By: <input checked="" type="checkbox"/> Contractor <input type="checkbox"/> Government		
Serial Number <b>COMPLETE VIN#</b>	License Number <b>12345A1</b>		Operating Supplies Furnished By: <input type="checkbox"/> Contractor <input type="checkbox"/> Government		
			Equipment Status Inspected <input checked="" type="checkbox"/> Under Agreement		
Date Mo : Day	Start	Stop	Work	Hours (Circle)	Days / Miles
9/30	0001	0700	7	8	DIV X
9/30	0701	1900	12	8	DIV X
9/30	1901	2359	5	8	OFF SHIFT
Vendor Rating			Sect. Rep. Name and Position - PRINT		
Poor	Avg.	Good	Exp.	N/A	Print Your Name
KPI Performance Expectations			Sect. Rep. Signature		
Equipment in Safe Working Condition			Your Signature		
Operator Skill Level			Contractor Signature		
Operator's Safety			John Smith		
Operator's Cooperation Level			Date		
Overall Performance			Time		
			9/30/20		
			1900		
			CAL FIRE 287 (Rev. 5/2011)		

**24HR LINE RESOURCE - 1 OPERATOR**

EMERGENCY SHIFT TICKET and EVALUATION FORM				Contractor Name <b>THE BEST DOZERS LLC</b>	
The responsible Government Officer will complete this form each shift.					
Incident or Project Name <b>CALDOR</b>	Incident Number <b>F21CAENF024030</b>	Request Number <b>E-555</b>	Operator #1 <b>FIRST &amp; LAST</b>	Operator #2 <b>-</b>	
Agreement Number <b>CALDOR</b>	Equipment Make <b>MANU-0000015955</b>	Equipment Model / Type <b>D6N / TYPE # E</b>	Operator Furnished By: <input checked="" type="checkbox"/> Contractor <input type="checkbox"/> Government		
Serial Number <b>COMPLETE VIN#</b>	License Number		Operating Supplies Furnished By: <input type="checkbox"/> Contractor <input type="checkbox"/> Government		
			Equipment Status Inspected <input checked="" type="checkbox"/> Under Agreement		
Date Mo : Day	Start	Stop	Work	Hours (Circle)	Days / Miles
9/28	0001	0700	7	8	OFF SHIFT
9/28	0701	1900	12	8	DIV X
9/28	1901	2400	5	8	OFF SHIFT
Vendor Rating			Sect. Rep. Name and Position - PRINT		
Poor	Avg.	Good	Exp.	N/A	Print Your Name
KPI Performance Expectations			Sect. Rep. Signature		
Equipment in Safe Working Condition			Your Signature		
Operator Skill Level			Contractor Signature		
Operator's Safety			John Smith		
Operator's Cooperation Level			Date		
Overall Performance			Time		
			9/29/20		
			1900		
			CAL FIRE 287 (Rev. 5/2011)		

**24HR IN CAMP RESOURCE**

EMERGENCY SHIFT TICKET and EVALUATION FORM				Contractor Name <b>THE BEST CAMP LLC</b>	
The responsible Government Officer will complete this form each shift.					
Incident or Project Name <b>CALDOR</b>	Incident Number <b>F21CAENF024030</b>	Request Number <b>E-333</b>	Operator #1 <b>FIRST &amp; LAST</b>	Operator #2 <b>-</b>	
Agreement Number <b>CALDOR</b>	Equipment Make <b>MANU-0000015950</b>	Equipment Model / Type <b>WESTERN SHELTER 19X35</b>	Operator Furnished By: <input checked="" type="checkbox"/> Contractor <input type="checkbox"/> Government		
Serial Number <b>TENT</b>	License Number		Operating Supplies Furnished By: <input type="checkbox"/> Contractor <input type="checkbox"/> Government		
			Equipment Status Inspected <input checked="" type="checkbox"/> Under Agreement		
Date Mo : Day	Start	Stop	Work	Hours (Circle)	Days / Miles
9/29	0001	2400	24	8	ICP
Vendor Rating			Sect. Rep. Name and Position - PRINT		
Poor	Avg.	Good	Exp.	N/A	Print Your Name
KPI Performance Expectations			Sect. Rep. Signature		
Equipment in Safe Working Condition			Your Signature		
Operator Skill Level			Contractor Signature		
Operator's Safety			John Smith		
Operator's Cooperation Level			Date		
Overall Performance			Time		
			9/30/20		
			1900		
			CAL FIRE 287 (Rev. 5/2011)		



# Check-In

## For Federal Resources and Federally Sponsored Contractors

### Process

1. Check-in at the Check-in trailer at ICP.
2. Next, use the QR code or URL to access the Federal Check-in Form.
3. In remarks indicate you are working on the West Zone.



<https://bit.ly/2Rr545v>

If you are a Federal Resource and have not Checked in through the Check-in form please do so at your earliest convenience.

Thank you!





## CALDOR INCIDENT PEER SUPPORT:



The Caldor Peer Support Team is available on the incident for any peer support needs.

Examples of peer support needs are, but not limited to, understanding stress reactions, dealing with traumatic experiences, professional or personal crisis, other behavioral health impacts and/or obtain vetted resiliency resources.

The best way to get a hold of a Peer Team member is to call the number below or stop by the ESS Trailer.



Peer Support Handouts

In addition, there is an onsite clinician available to meet on an individual and/or group basis.

**Caldor Incident Peer Support Help Line**  
**925-532-5607**

Watch for the signs and symptoms of stress in yourself and the people around you. Try and stay positive and get much needed rest when you can. We can do this, together!

A message to our firefighters from **ASHLEY IVERSON**.



**Stay Healthy, Stay Alert and Stay Strong!**



Official Sources of Public Information for CALDOR FIRE WEST ZONE	
Incident Information Line: (530) 303-2455	Incident Media Line: (530) 806-3212
Incident Website: <a href="http://www.fire.ca.gov">www.fire.ca.gov</a>	Email Signup: <a href="https://tinyurl.com/CaldorEmailList">https://tinyurl.com/CaldorEmailList</a>



STATUS	
Incident Start Date: August 14, 2021	Total Personnel:
Acreage:	Containment:

**Media Law**

The California State Penal Code Section 409.5(d) allows the news media to enter scenes of disaster, riot, or civil disturbance. Properly identified members of the news media should not be restricted from entering locations specified within the code. However, this does not include crime scenes, and does not imply that the news media may interfere with incident operations while they are in the areas of concern. If entering such a location that is hazardous, they should be advised; media access cannot be prevented for safety reasons unless their presence would impede CAL FIRE’s mitigation of the incident or the disturbing of evidence. When working around the media, remember:

- Media is **not permitted** on private property without the property owners permission.
- If approached and questioned by the media and or the public, talk about your assignment or task at hand. Remember to wear all the appropriate PPE.
- If needed call for an incident PIO through the chain of command.
- Never speculate, give opinions or speak for others.
- There is no such thing as an “off the record” comment.

**CAL FIRE Social Media Policy (Social Media 0691)**

Social Media is increasingly being used by public agencies, the media as well as the public. This form of communication continues to grow rapidly in order to supply the instant gratification needs of society. Therefore when on a CAL FIRE incident you will adhere to the CAL FIRE Social Media Policy, 0691. You can get further information about the CAL FIRE Social Media Policy from the incident Public Information Officer. While assigned to the incident, there will be no posting of:

- Inappropriate information or materials
- No opinions
- No endorsements
- Inappropriate pictures or videos

**Lost and Found**

The Information Section will manage Lost and Found items for the incident. If you have lost an item leave your contact information and what you have lost at the Information Section. If you have found an item on the incident bring the item to the Information Section with your contact information as well.

Incident Base Camp Mailing Address
c/o Public Information Office/Trailer 102 Placerville Dr. Placerville, CA 95667





## Human Resources Message

Caldor Fire  
September 8, 2021

### Reporting Harassment

Harassment, or other forms of inappropriate misconduct, such as bullying, intimidation, etc., can sometimes go unreported. Employees may not know what to report, how to report, or who to report to. If this is case, please come talk to us, and we'll help you out.

But there are other reasons inappropriate behavior may go unreported, including employees being fearful of:

- losing their job
- being demoted
- being denied a raise or promotion
- being treated differently
- not being believed

While the above is understandable, we are fully committed to maintaining a policy of zero tolerance for these types of behaviors that are toxic to the work environment.

We can address issues here on the incident, and we can also follow up with your home units to ensure the behaviors are addressed once you demob, but we can't do anything about issues we aren't aware of. So please, if you see something, say something.



HRSP Adam Alvarez: (707) 373-8715    HRSPT Sterling Flores: (707) 980-2043  
Hours: 0600 – 2200

# **Caldor Incident West Ground Support**

## **Ground support / Demob Inspections**

**2441 headington Rd.**

**Placerville, CA 95667**

### **Fuel Locations**

#### ***Card Lock***

Dawson Oil Company  
meadows Dr.  
321 Pleasant Valley Rd  
Diamond Springs, CA 95619

#### ***Strawberry***

17481 US-50 Twin Bridges  
CA, 95735

**Diesel**

#### ***Kirkwood***

1501 Kirkwood  
Kirkwood, CA 95646

**Diesel**

***EQPM Kevin Bare (209) 388-5580***

### **Repairs**

#### **Cal-OES Equipment Needs**

*ChueThao (916) 213-5267*  
3791 Bradview Dr  
Sacramento, CA 95827

#### **Incident Repairs**

*Contact: (916) 206-8967*  
2441 Headington Road  
Placerville, CA 95667

***Billy Greenwood (559) 281-4330***

### **Transportation**

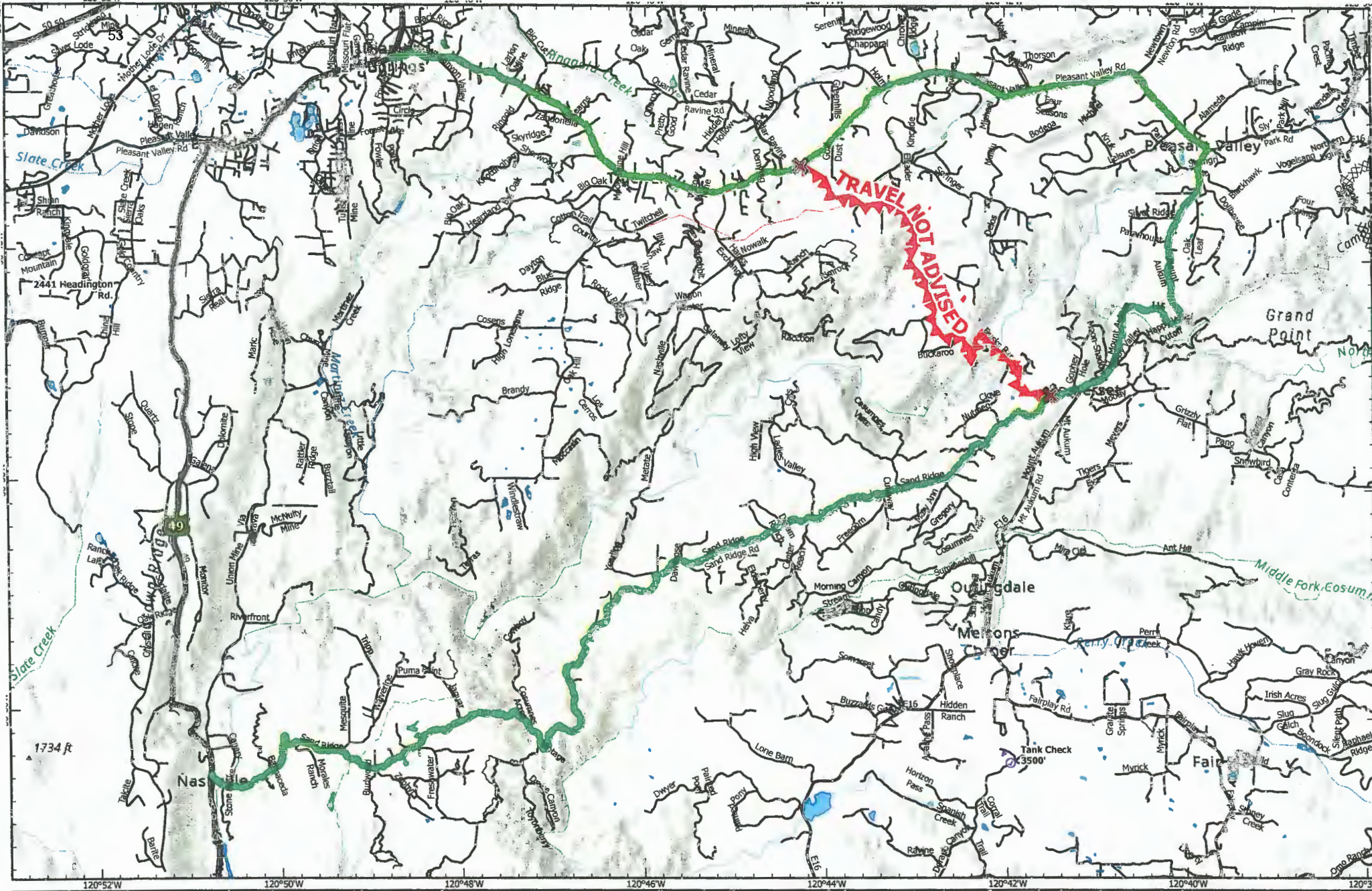
*EQPM (T) Bob Johnson (530) 360-6313*

*EQPM (T) Kyle Popovich (719) 464-4858*

*EQPM Fidel Fernandez (909) 520-1770*

*GSUL(T) Jason Truelock (209) 419-3678*

*GSUL Mike Esparza (510) 507-1532*



Datum: NAD 83 1:81,501

Miles  
0 0.65 1.3

**Water Tender Route**  
**Caldor Incident**  
**CA-ENF-024030**

- Off-Site Fuel
- Ground Support
- DO NOT TRAVEL
- Bucks Bar 53
- Completed Dozer Line
- Planned Doz
- Local Roads



DISCLAIMER:  
 The displayed incident data is approximate and should only be used for informational purposes. The information contained in supporting base layers was generated from GIS data maintained by different sources and Agencies and is not necessarily accurate to mapping, surveying, or engineering standards.

IMT 6 018  
 5/21/2021  
 5:46 PM

- 1 Trailer Row 54
- IC
- Ops
- COML
- IMET/FBAN
- Logs
- Ordering
- Safety
- Check-in/demob
- Air ops
- CalFire Coms
- Motel
- Medical

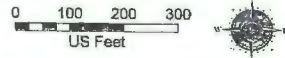


**BASECAMP MAP**  
**Caldor Incident**  
**CA-ENF-024030**

- 1 Trailer Row
- 2 Meeting
- 3 Equipment time
- 4 FSC
- 5 Lunch/water/ice
- 6 Liaison
- 7 PIO/media
- 8 Clerical
- 9 ESS
- 10 Supply
- 11 Briefing
- 12 Overhead parking
- 13 Sleeper trailers
- 14 Main gate
- 15 Tent sleeping
- 16 Engine parking
- 17 National Guard
- 18 Tent sleeping
- 19 Engine/Truck parking
- 20 Shower
- 21 Laundry
- 22 Vendor Parking
- 23 Facilities
- 24 Feeding
- 25 Plans
- 25 Situation
- 27 READ
- 28 MKU
- 29 CAL-MAT
- 30 IT
- 31 OES
- 32 Suppression/Repair



Dozers and Heavy Equipment  
 5854 Mother Lode Dr.  
 Placerville, CA 95667



DISCLAIMER:  
 The displayed incident data is approximate and should only be used for informational purposes. The information contained in reporting files and reports was generated from GIS data maintained by different sources and agencies and is not necessarily accurate for mapping, surveying, or engineering standards.



**Dozers and Heavy  
Equipment**  
-----  
**5854 Mother Lode Dr.  
Placerville, CA 95667**



**DOZER PARKING**  
**Caldor Incident**  
**CA-ENF-024030**

Directions  
-----  
Take 50 EAST  
EXIT Missouri Flat Rd  
Turn LEFT on Missouri Flat Rd  
Turn RIGHT Mother Lode Dr  
Destination is in 2.4 miles

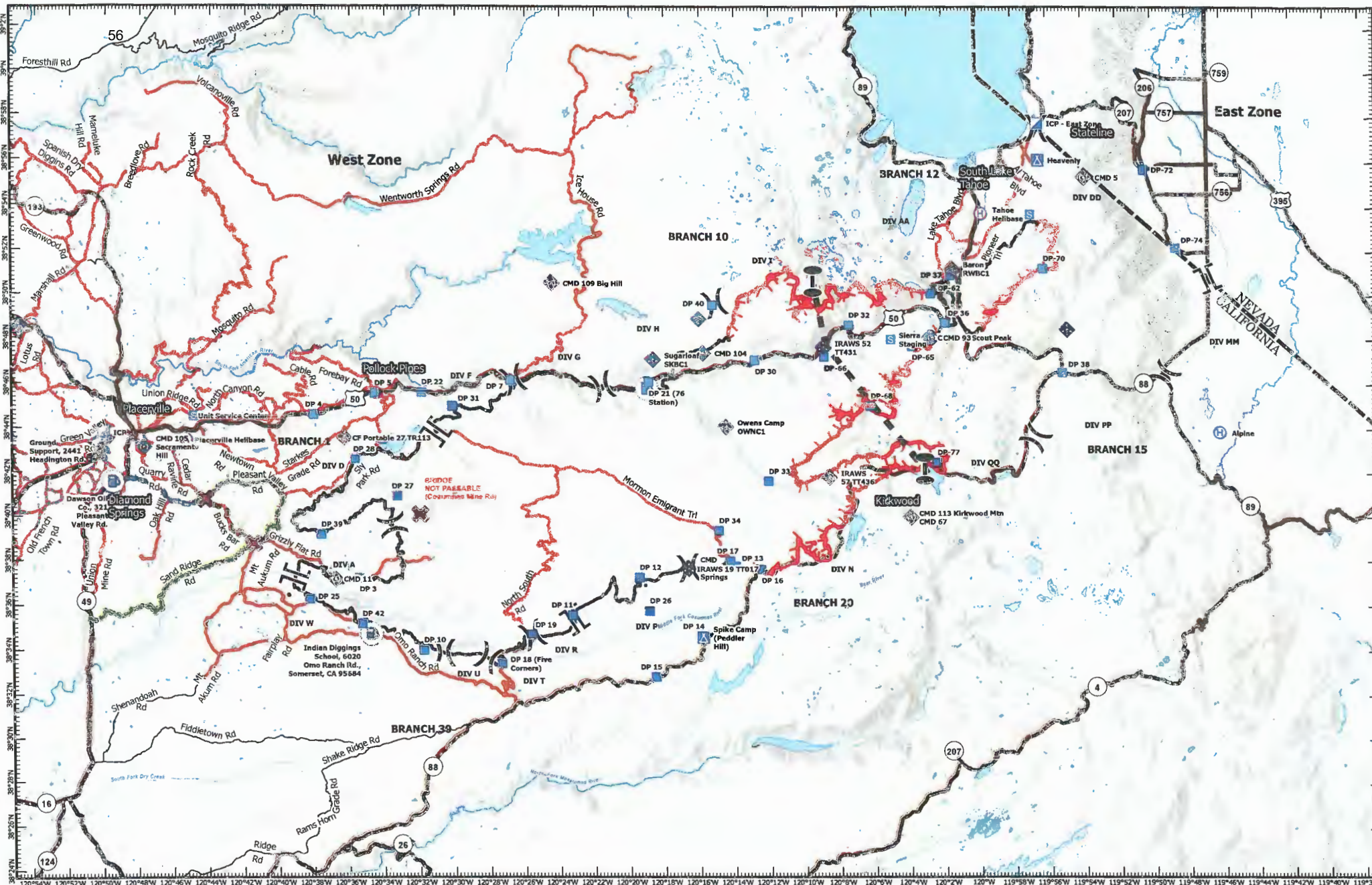


0 50 100 150 200 250 300 350 400 450 500 550 600

US Feet  
DISCLAIMER:  
The displayed incident data is approximate and should only be used for informational purposes. The information contained in supporting data layers was generated from GIS data maintained by different sources and agencies and is not necessarily accurate to mapping, surveying, or engineering standards.

MT 6 GIS  
5/5/2021  
5:56 PM





Datum: NAD 83  
1:420,000

# TRANSPORTATION MAP

## Caldor Incident

### West Zone

#### CA-ENF-024030

- DO NOT TRAVEL
- Ground Scourt
- Water Tender Alt Route
- Bucks Bar Rd
- Helibase
- Division Break
- Branch Break
- Zone Break
- Incident Command Post
- Drop Point
- Camp
- Staging Area
- Off-Site Fuel
- Mobile Weather Unit
- Fire Edge
- Contained Line
- Internet Access
- Repairer
- Off-Site Fuel
- Fire Edge
- Highways
- Major Roads
- Major Routes
- ZoneBreakLine

**DISCLAIMER:**  
The displayed incident data is approximate and should only be used for informational purposes. The information contained in supporting base layers was generated from GIS data maintained by different sources and agencies and is not necessarily accurate to mapping, surveying, or engineering standards.

IMT 6 GIS  
9/5/2021  
8:51 PM



