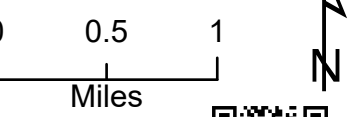
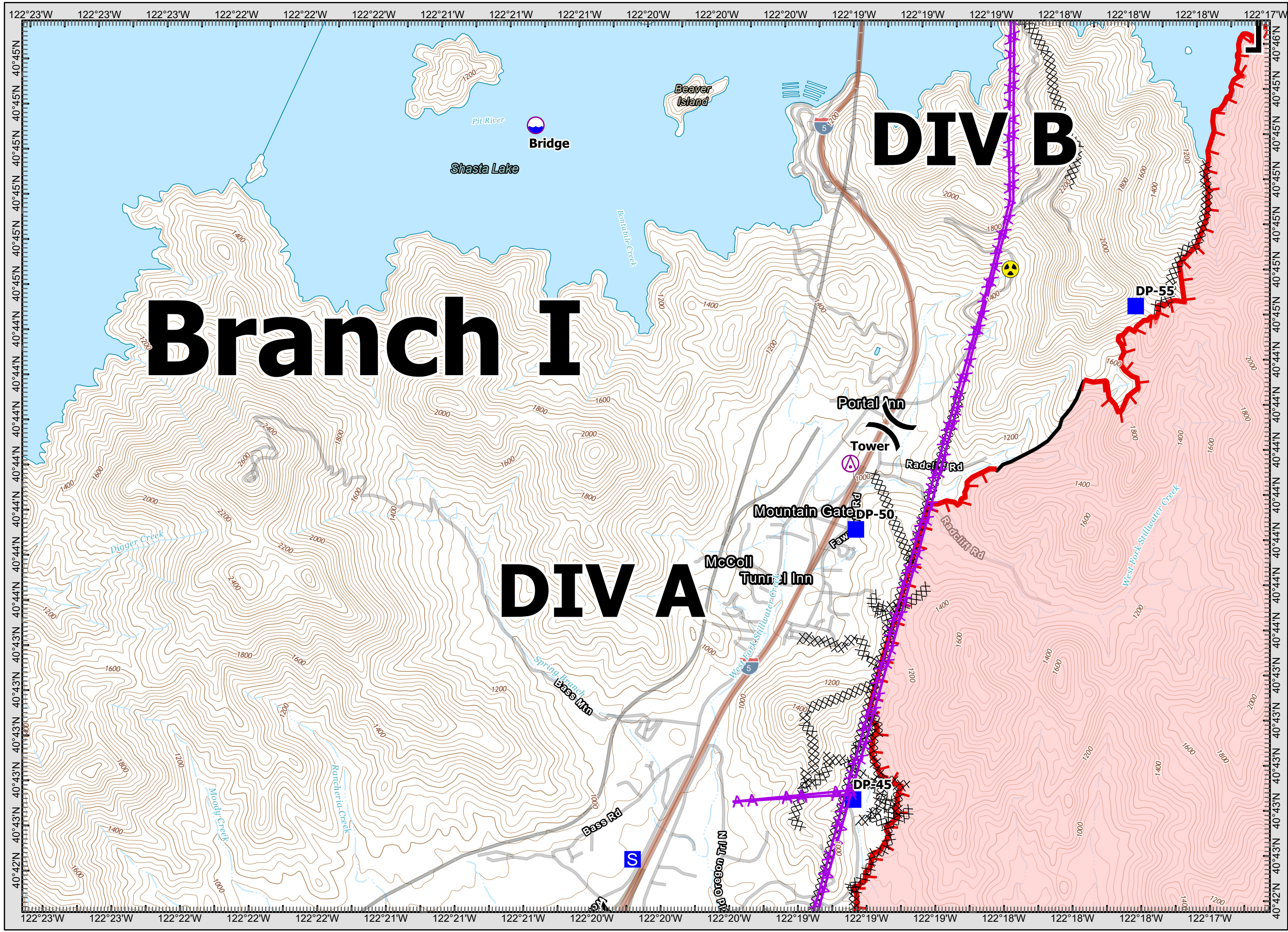


Fawn Incident
CA-SHU-010480
09/27/2021
IAP Map
Index

- Aerial Hazard
- Dip Site
- Helibase
- Division Break
- Branch Break
- Medical
- Drop Point
- Staging Area
- Hazard
- Transmission Lines
- Completed Dozer Line
- Completed Hand Line
- Completed Road as Line
- Fire Edge
- Contained Line





Branch I

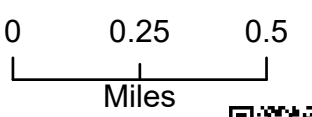
DIV B

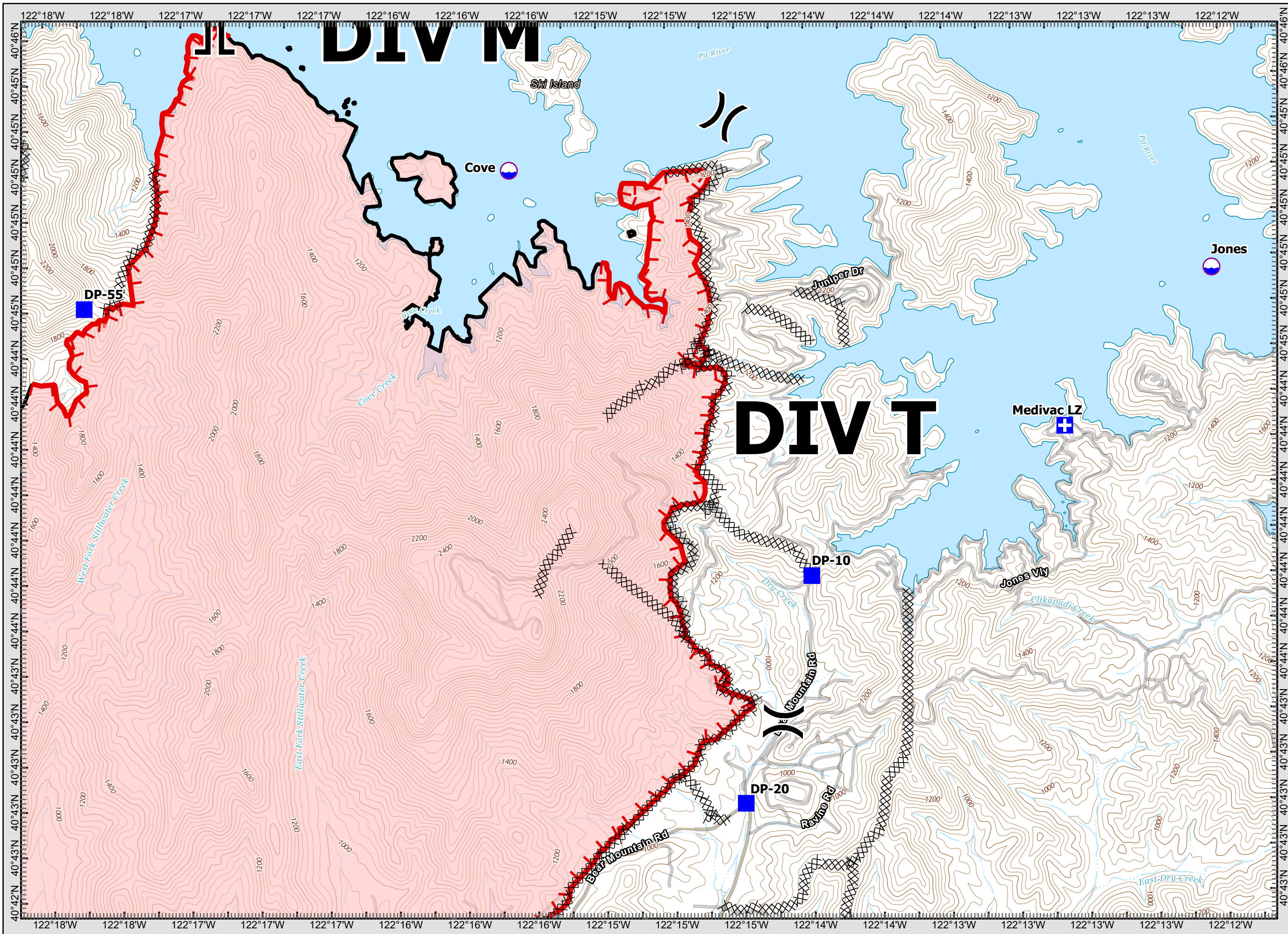
DIV A



Fawn Incident
CA-SHU-010480
09/27/2021
IAP Map
Page 1

- Aerial Hazard
- Dip Site
- Helibase
- Division Break
- Branch Break
- Medical
- Drop Point
- Staging Area
- Hazard
- Transmission Lines
- Completed Dozer Line
- Completed Hand Line
- Completed Road as Line
- Fire Edge
- Contained Line



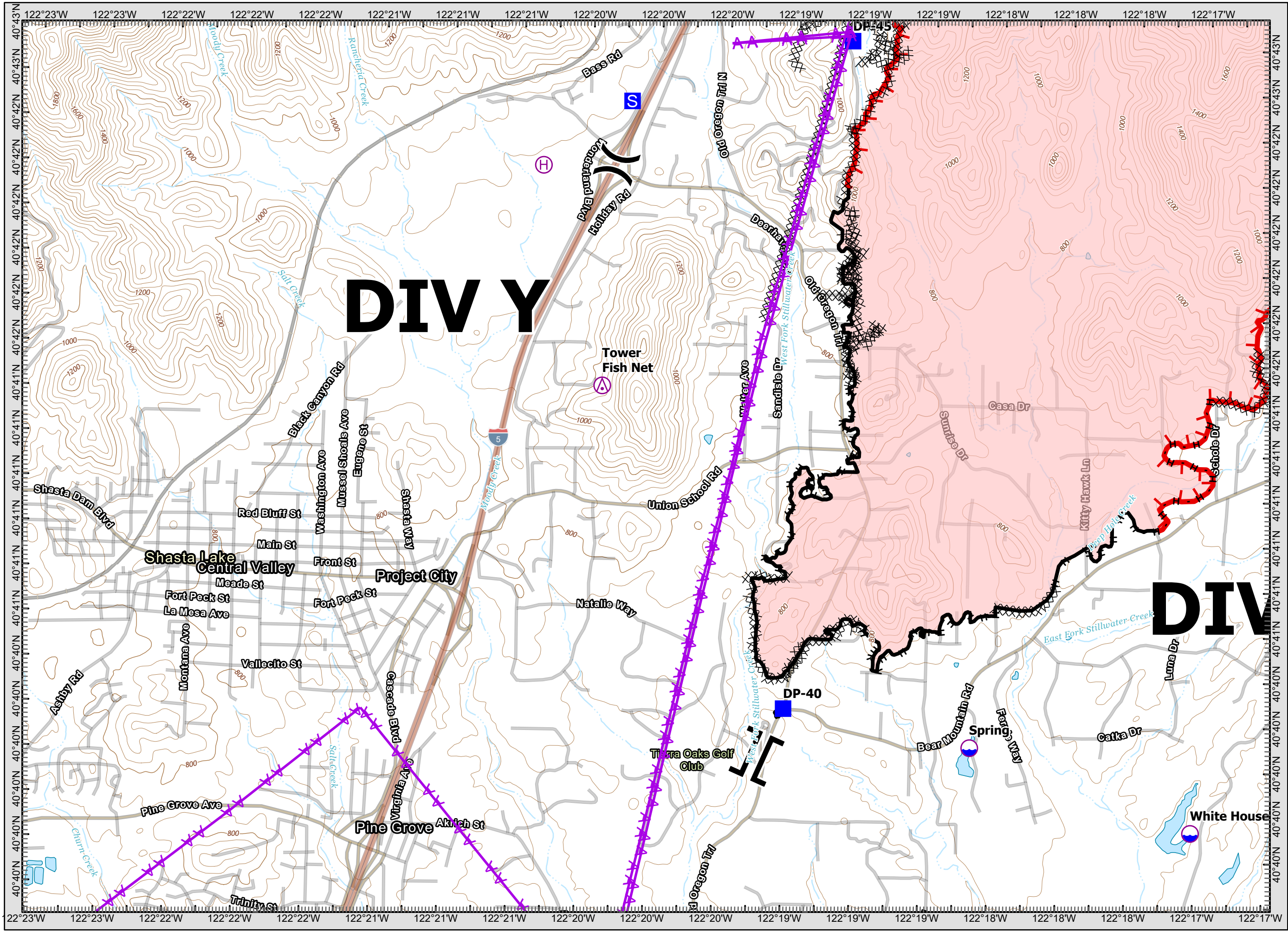


Fawn Incident
CA-SHU-010480
09/27/2021
IAP Map
Page 2

- Aerial Hazard
- Dip Site
- Helibase
- Division Break
- Branch Break
- Medical
- Drop Point
- Staging Area
- Hazard
- Transmission Lines
- Completed Dozer Line
- Completed Hand Line
- Completed Road as Line
- Fire Edge
- Contained Line

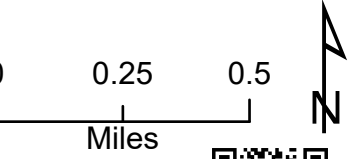
0 0.25 0.5
 Miles

MT4
 9/26/2021 @ 20:46
 NAD83




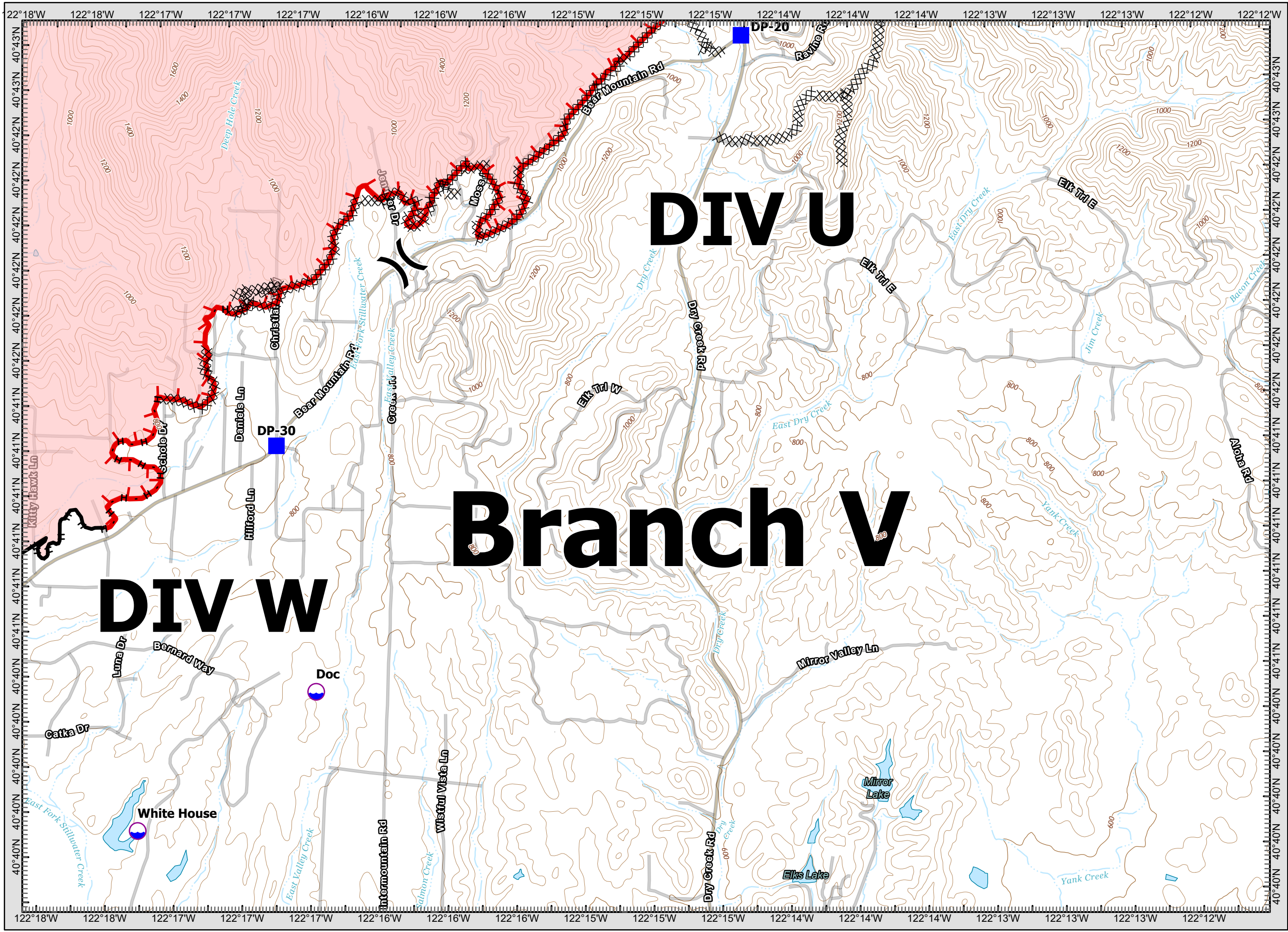
Fawn Incident
CA-SHU-010480
09/27/2021
IAP Map
 Page 3

- Aerial Hazard
- Dip Site
- Helibase
- Division Break
- Branch Break
- Medical
- Drop Point
- Staging Area
- Hazard
- Transmission Lines
- Completed Dozer Line
- Completed Hand Line
- Completed Road as Line
- Fire Edge
- Contained Line



MT4
 9/26/2021 @ 20:46
 NAD83





Fawn Incident
CA-SHU-010480
09/27/2021
IAP Map
 Page 4

- Aerial Hazard
- Dip Site
- Helibase
- Division Break
- Branch Break
- Medical
- Drop Point
- Staging Area
- Hazard
- Transmission Lines
- Completed Dozer Line
- Completed Hand Line
- Completed Road as Line
- Fire Edge
- Contained Line

0 0.25 0.5
 Miles

MT4
 9/26/2021 @ 20:46
 NAD83