

INCIDENT ACTION PLAN

FAWN INCIDENT

CA-SHU-010480



OPERATIONAL PERIOD

9/27/2021 0700

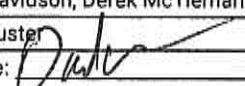
to

9/28/2021 0700



THIS PAGE LEFT INTENTIONALLY BLANK

ORGANIZATION ASSIGNMENT LIST (ICS 203)

1. Incident Name: FAWN		2. Operational Period: Date From: 9/27/2021 Time From: 0700		Date To: 9/28/2021 Time To: 0700	
3. Incident Commander(s) and Command Staff:			7. Operation Section:		
IC/UC's	Geoff Pemberton, Scott Corn (T), Bob Counts (T)		Operations	Shane Lauderdale, Brian Gibilisco (T)	
Deputy	Darryl Laws		Deputy Operations	Josh Bischof, Shawn Raley	
Safety Officer	Doug Ferro, Jack Piccini, Bill Murphy (T)		Night Ops	Monty Smith	
Information Officer	Steve Kaufmann, Chris Harvey (T)		Staging Area		
Liaison Officer	Dave Pender, Ron Karlen (T)		Branch	I	Tim Perkins, Nick Ciapponi (T)
LEO Liaison	Glen Twyman, Josh Allen, Rich Lee (T)		Division/Group	A/B	Jason Collins, Scott Irvine (T)
4. Agency/Organization Representatives:			Division/Group	Y	Garret Quigley
Agency/Organization	Name		Division/Group		
Shasta County FD	Brett Gouvea		Division/Group		
Redding FD	Jerrod Vanlandingham		Division/Group		
Shast Lake FPD	Dennis Beck		Branch	V	Jake Keown, Dusty Gyves (T)
Mountain Gate FPD	Devin Owens		Division/Group	M/T	Clint Swenson, Niko Matteoli (T)
USFS	Sara Acridge		Division/Group	U	Buck Thomas
Shast County SO	Michael Johnson		Division/Group	W	Dave Hight, Anthony Pescatore (T)
CDCR	Roy Ulatan		Division/Group		
CAL OES	Patrick Titus		Division/Group		
Redding PD	Bill Schueller		Branch	CONT.	Shane Galvez (12 Hr)
CHP	Kevin Alexander		Division/Group	Jones Cont. Group	
American Red Cross	Nuriddin Ziyodinor		Division/Group		
			Branch	Suppression Repair	Ben Rowe (12 Hr)
			Division/Group	Suppression Repair	Kevin Mancebo (12 Hr)
			Division/Group		
			Staging Area	Anderson Staging	Tyler Hullquist (12 Hr)
			Division/Group		
5. Planning Section:			Division/Group		
Chief	Chris Burch		Division/Group		
Deputy	Dave Shy		Division/Group		
Resource Unit	Gwyndolyn Ozard, Nochella Ozard, David Newell, Sean Birkimer (T)		Division/Group		
Situation Unit	Brandon Strohbehn, Brian Torosian (T)		Branch		
Documentation Unit	Allyson Liang		Division/Group		
Demobilization Unit	Floyd Horn		Division/Group		
GISS	Dresselhaus, Wilson, Wallingford		Division/Group		
FBAN	Jonathan Pangburn		Division/Group		
IMET	Ryan Walbrun, Julie Malingowski (T)		Division/Group		
Training Tech Spec	Jim Rustice		Air Operations Branch		Director: Greg Bradshaw
6. Logistics Section			Air Support Group Supervisor		Ray Gomez
Chief	Matt Reich		Air Tactical Group Supervisor		Eric Hill
Deputy	Mathew Brandt		Helibase Manager		Rick Boman
Supply Unit	Shawn Burriss		8. Finance/Administration Section:		
Facilities Unit	Travis Heard, Matt Brown (T)		Chief	Mara Zaver	
Ground Support Unit	Conor Stapleton, Jacob Dean (T)		Deputy	Rob Jenkins	
Communications Unit	Mike Heyfron		Time Unit	Shane Beck, Greg Tunzi (T)	
Medical Unit	Steve McGary		Procurement Unit	Brock Chapin	
Motel Unit	Dawn Muschetto		Comp/Claims Unit	Sean Bowe	
Food Unit	Jesse McGuire		Cost Unit	Angela Davidson, Derek McTiernan (T)	
Ordering Manager	Daniel Williams, Brent Lee, Robyn Sease		Purchasing	Amber Custer	
Prepared By: Name:	David Shy	Position/Title:	PSC	Signature:	
ICS 203		Date/Time:	9/26/2021 2300 hours		



Fawn Fire Weather Forecast



FORECAST NO: 2
PREDICTION FOR: 0700-0700
SHIFT DATE: Mon 9/27-Tue 9/28
FORECAST ISSUED: 1900 9/26/2021

NAME OF FIRE:Fawn
UNIT: Shasta-SHU
SIGNED: *Ron Wally*
Incident Meteorologist

Cold frontal passage late this afternoon and evening

WEATHER DISCUSSION: Increasing clouds this morning ahead of an incoming cold front. Humidity values may be at their lowest around midday but then increase late afternoon as the front approaches. Southwest winds will increase after 1400 hours then become gusty through sunset just ahead of the cold front. A few rain showers may accompany the frontal passage but rain amounts generally less than a tenth. **The most critical period when winds will be strongest will be late afternoon hours through sunset. Be aware of switching winds that could impact fire weakened trees.** Winds will quickly shift west to northwest behind the front overnight into Tuesday morning. The airmass behind the front will be much colder with lows into the 40s with good humidity recovery.

WEATHER FORECAST FOR MONDAY:

WEATHER: Increasing clouds and becoming breezy afternoon hours with a slight chance of rain showers.

TEMPERATURES: Highs in the mid 70s (4-8 degrees cooler than yesterday)

HUMIDITY: Lowering 40-50% briefly around midday then rising 60% late afternoon as front approaches.

20 FT WINDS:

RIDGETOP - Southwest 6-12 mph afternoon gusts 15-20 mph.

SLOPE/VALLEY - Light winds until mid-morning then southerly 4-8 mph gusts 10-15 mph.

HAINES INDEX: 3 STABILITY/INVERSION: Moderate morning inversion lifting by 1100 hours.

WEATHER FORECAST FOR MONDAY NIGHT:

WEATHER: 20-30 percent chance of rain showers. Rain amounts a tenth or less. Breezy and cooler.

TEMPERATURES: Lows 45-50 (5-10 degrees cooler than yesterday)

HUMIDITY: Good recovery before midnight of 70% with full recovery overnight.

20 FT WINDS:

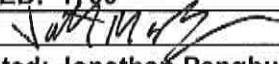
RIDGETOP - Southwest 10-20 mph early evening switching Westerly 10-20 mph gusts 30 mph.

SLOPE/VALLEY - Southwest evening winds to 15 mph turning West/Northwest 8-18 mph.

HAINES INDEX: 2 STABILITY/INVERSION: Weak or no inversion forecast given the frontal passage.

EXTENDED FORECAST: The coolest day so far this fall on Tuesday behind the front with highs only around 70 degrees. Humidity values will slowly fall to around 30-40% with Northerly winds 5-15 mph. **A moderate to briefly strong North wind event** sets up Tuesday night with gusts 35-40 mph possible late Tuesday night into Wednesday morning as humidity values lower to around 30 percent. Look for a modest warming and dryin~ *end Weds-Thurs with highs in the lower 80s and lows upper 50s.

FIRE BEHAVIOR FORECAST

FORECAST NUMBER: 3	TYPE OF FIRE: Wildland
FIRE NAME: Fawn	OPERATIONAL PERIOD: 9/27-9/28, 0700-0700
DATE ISSUED: 9/26/2021	TIME ISSUED: 1700
UNIT: CA-SHU-010480	SIGNED: 
Typed/printed: Jonathan Pangburn, FBAN	

INPUTS

WEATHER SUMMARY: COLD FRONT PASSAGE. CHANCE FOR SHOWERS OVERNIGHT

Temp: 77 max; 46 min
 RH: 40% min; 90% max
 Wind: SW 10, gust 20 day; W/NW 10 gust 25 night

OUTPUTS

FIRE BEHAVIOR

GENERAL:

Fuels & fire behavior advisory in effect. Dead fuel accumulation from winter storm damage & mortality. ERC above 90th percentile; BI average for this time of year. Live & dead fuel moistures at critical. 100- & 1,000-hr dead fuels below 10th percentile.

In the absence of weather conditions outside the forecast or extreme fire behavior conditions expect:

	Max. Flame Length	Max. Rate of Spread	Spotting	Probability of Ignition
Grass	<5' (1.5 m)	35-40 ft/min (0.6-0.7 km/hr)	< 0.3 mile (0.5 km)	40%
Shrub	10-15' (3-4.5 m)	40-45 ft/min (0.7-0.8 km/hr)	< 0.3 mile (0.5 km)	40%
Timber Litter	< 5' (1.5 m)	5 ft/min (0.1 km/hr)	< 0.3 mile (0.5 km)	40%
Timber Understory	5-10' (1.5-3 m)	5-10 ft/min (0.1-0.2 km/hr)	< 0.3 mile (0.5 km)	40%

****minimum safety zone size for grass fuels is 1/4 acre (0.1 Ha) for a Strike Team of Engines.**

****minimum safety zone size for timber fuels is 1/3 acre (0.1 Ha) for a Strike Team of Engines.**

****minimum safety zone size for shrub fuels is 1/2 acre (0.2 Ha) for a Strike Team of Engines.**

SPECIFIC:

Branch I: No fire growth anticipated.

DIV M/T: Around sundown, wind shift will be abrupt from SW to W to NW. This will test the line. Any remaining heat could produce ember cast toward Jones Valley and Klikapudi Creek.

DIV U / W: Passage of cold front will test fire line around Bear Mtn Rd.

AIR OPERATIONS:

Clear.

Mixing height: 5,000 ft. AGL. Transport winds: SW 15-20 becoming NW 20 overnight. Sunrise 0701, Sunset 1859.

SAFETY

Cold front passages indicate critical fire weather. Don't underestimate rapid wind shift and increase in speed. Fire weakened trees + cold front winds = WATCH OUT!

Fuels and Fire Behavior Advisory

Northern California

September 16, 2021, to September 30, 2021



Subject: Potential for extreme fire behavior due to continued critically low live and dead fuel moistures. Very dry conditions resulting from persistent drought, minimal snowpack and spring precipitation, periods of excessive heat have caused elevated to record fire danger rating values across much of northern California. Anticipated moisture could temporarily reduce some threat across the far north PSAs.

Discussion: Fires burning in northern California continue to exhibit extreme fire growth due to critical fuel conditions. Rapid fire spread can be fuels driven. Wind events have led to extreme rates of spread. Surface fuels are very receptive to embers. Long range spotting, area ignition, and group torching is occurring on large fires frequently.

Difference from normal conditions: Extreme to Exceptional levels of drought conditions continue to exist across much of Northern California. The drought is expected to persist or intensify through the rest of fire season. Deficient rainfall and snowpack with early melt off, coupled with periods of extreme heat has resulted in fuels that are critically dry, with record setting conditions for most areas.

Concerns to Firefighters and the Public:

- Energy Release Component (ERC) at numerous weather stations set record maximums already this year. Recent scattered rain has reduced some ERC values, but fuels are rebounding quickly. Extreme fire behavior has been observed in all fuel types and both live and dead fuels. **Continue to anticipate increased spread rates, spotting, and active nighttime burning.**
- The combination of extreme levels of persistent drought and record-low rainfall and snowpack amounts has led to very low live and dead fuel moistures. 1000-hour fuel moistures continue to trend at record low levels in many areas. Live fuel moistures in grasses, shrubs, and trees, remain at critical levels in many areas of Northern California due to limited green-up this spring. **Expect fires to ignite easier, spread faster and burn hotter. Reports of blistered paint on vehicles have been surprisingly frequent so far this year. Do not expect fires to exhibit reduced fire behavior when entering areas of live fuels; anticipate increased spread rates and spotting.**
- Direct attack is often not feasible under regular diurnal wind conditions with ground resources. Aviation utilization is often insufficient in moderating rate of spread without immediate heavy ground resource response. **Anticipate higher resistance to control in all fuel types.**
- Northern California continues to experience large fire activity and multiple team deployments and will likely experience an extended fire season. It is important to be mindful of and manage fatigue for all resources. **Everyone, every day, returns home safely.**
- The frequency of North to Northeast offshore wind events increases from mid-September into the fall. These strong winds are often accompanied by very low RHs and will pose an increased hazard when combined with this year's critically dry fuels conditions. **Watch for change.**

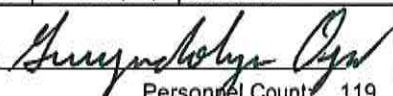
Mitigation Measures:

- Local and inbound fire personnel need to be aware that fire behavior across the state is exceeding normal expectations for this time of the year. **Local briefings need to be thorough and highlight specific fire environment conditions. These include but are not limited to local weather forecasts, PocketCards, ERC's, live and dead fuel moistures.**
- Suppression actions need to be based on good anchor points, escape routes, and safety zones. **Remember LCES. Experienced lookouts are essential under these conditions.**
- Base all actions on current and expected behavior of the fire. **Augment initial attack resources as incident activity dictates.**

Area of Concern: Northern California except for the following Predictive Service Areas: North Coast and Bay Marine, west of Highway 101 in Mid-Coast to Merced and Diablo-Santa Cruz, and the northeastern portion of Far Eastside.

ASSIGNMENT LIST (ICS 204 WF)

CONTROLLED UNCLASSIFIED
INFORMATION//BASIC

1. Incident Name: <p style="text-align: center; font-size: 1.2em;">FAWN</p>		2. Operational Period: Date From: 09/27/21 Date To: 09/28/21 Time From: 0700 Time To: 0700				3. Branch Division <p style="text-align: center; font-size: 1.5em;">I A/B</p>	
4. Operations Personnel:		Operations Section Chief: Shane Lauderdale, Brian Gibilisco (T)		Night Ops: Monty Smith		Page 1 of 2 Bravo	
		Branch Director: Tim Perkins, Nick Ciapponi (T)		Branch Safety: Keith Harston			
		Division/Group Supervisor: Jason Collins, Scott Irvine (T)		Air Attack: Eric Hill			
5. Resources Assigned:		** Resources Below in Bold are 12 Hour **					
Resource Identifier	ALS	LWD	Leader	Personnel	Request #	Hours	Reporting Location
STC BTU 9210C			PURVIS, PATRICK	16	E-40	0700-0700	Radcliff Road
STC TGU 9250C			TROEHLER, MATT	16	E-25	0700-0700	Radcliff Road
STC XYU 3300C			GARDNER, BOBBY	19	E-86	0700-0700	Radcliff Road
STC XSD 6440C	X		MOLLOY, BERNIE	19	E-109	0700-0700	Radcliff Road
STC OES 6849C	X		CHARPENTIER, THOMAS	21	E-114	0700-0700	Radcliff Road
STG BTU 9212G (CCC)			FINKENKELLER, KEVIN		C-20	0700-0700	Radcliff Road
STG LMU 9220G (CDCR)			BONNER, CHRISTOPHER		C-7	0700-0700	Radcliff Road
STG TGU 9254G (CDCR)			SHEFFIELD, BRENNEN		C-38	0700-0700	Radcliff Road
STG SHU FAWN 1 (CDCR)			FAULKNER, JOSH	28		0700-0700	Radcliff Road
DOZ PVT E-45 - SCHREDER			HALL, GARY		E-45	0700-0700	Radcliff Road
DOZ PVT E-47 - SCHNETZER					E-47	0700-0700	Radcliff Road
DOZ PVT E-65 - PRODUMP			NORTON, TRACY		E-65	0700-0700	Radcliff Road
W/T XSH 50			ALLEN, JOHN		E-107	0700-1900	Radcliff Road
W/T PVT E-29 - AMERICAN			OILAR, NORMAN		E-29	0700-1900	Radcliff Road
W/T PVT E-31 - 40 TRAFFIC			FOOT, BRANDON		E-31	0700-1900	Radcliff Road
W/T PVT E-51 - T & S DVBE			GOETTING, MELL		E-51	0700-0700	Radcliff Road
W/T PVT E-116 - FIVE STAR			FROST, STEVE		E-116	0700-1900	Radcliff Road
W/T PVT E-118 - LUNTEY'S			LUNTEY, KEVIN		E-118	0700-0700	Radcliff Road
6. Work Assignments: Fall hazard trees, and trees that threaten control lines. Mop up 300' from control lines. Hold and improve control lines. Pull Hose Lays where appropriate. Backhaul Excess Trash/Hose/Water.							
7. Special Instructions:							
8. Communications							
Name	Ch	Function	Rx Freq	Rx Tone	Tx Freq	Tx Tone	Notes
SHA CMD T1	1	COMMAND	154.4300	136.5 (T4)	159.0150	110.9 (T1)	Hatchet Mtn
CDF T23	4	TACTICAL	159.4500	192.8 (T16)	159.4500	192.8 (T16)	Branch I
CDF T25	14	AIR TO GROUND	159.2775	192.8 (T16)	159.2775	192.8 (T16)	Air to Ground
CALCORD	15	MEDICAL	156.0750	156.7 (T6)	156.0750	156.7 (T6)	Medical
GUARD	16	AIRGUARD	168.6250	None	168.6250	110.9 (T1)	EMERGENCY
9. Prepared by: Name:		Gwyndolyn Ozard		RESL		Signature: 	
ICS 204		Date/Time: 9/26/2021		2200		Personnel Count: 119	

ASSIGNMENT LIST (ICS 204 WF)

CONTROLLED UNCLASSIFIED
INFORMATION//BASIC

1. Incident Name: <b style="text-align: center;">FAWN	2. Operational Period: Date From: 09/27/21 Date To: 09/28/21 Time From: 0700 Time To: 0700	3. Branch Division <b style="font-size: 1.5em;">I <b style="font-size: 1.5em;">A/B
---	---	---

4. Operations Personnel:	Page 2 of 2 Bravo
---------------------------------	--------------------------

Operations Section Chief: Shane Lauderdale, Brian Gibilisco (T)	Night Ops: Monty Smith
Branch Director: Tim Perkins, Nick Ciapponi (T)	Branch Safety: Keith Harston
Division/Group Supervisor: Jason Collins, Scott Irvine (T)	Air Attack: Eric Hill

5. Resources Assigned: **** Resources Below in Bold are 12 Hour ****

Resource Identifier	ALS	LWD	Leader	Personnel	Request #	Hours	Reporting Location
W/T PVT E-120 - HARRIS			HARRIS, DUSTIN	2	E-120	0700-1900	Radcliff Road
W/T PVT E-122 - KNIGHT			MYERS, KEVIN	2	E-122	0700-0700	Radcliff Road
W/T PVT E-124 - JACK H			ANDERSON, JACK	2	E-124	0700-0700	Radcliff Road
W/T PVT E-126 - BC TRKNG			COULTER, BOB	2	E-126	0700-0700	Radcliff Road
FALM PVT O-182 - KNIGHT			DUROCHER, ANDREW	2	O-182	0700-1900	Radcliff Road
FALM PVT O-185 - A TEAM				2	O-185	0700-1900	Radcliff Road

6. Work Assignments:
 Fall hazard trees, and trees that threaten control lines.
 Mop up 300' from control lines.
 Hold and improve control lines.
 Pull Hose Lays where appropriate.
 Backhaul Excess Trash/Hose/Water.

7. Special Instructions:

8. Communications

Name	Ch	Function	Rx Freq	Rx Tone	Tx Freq	Tx Tone	Notes
SHA CMD T1	1	COMMAND	154.4300	136.5 (T4)	159.0150	110.9 (T1)	Hatchet Min
CDF T23	4	TACTICAL	159.4500	192.8 (T16)	159.4500	192.8 (T16)	Branch I
CDF T25	14	AIR TO GROUND	159.2775	192.8 (T16)	159.2775	192.8 (T16)	Air to Ground
CALCORD	15	MEDICAL	156.0750	156.7 (T6)	156.0750	156.7 (T6)	Medical
GUARD	16	AIRGUARD	168.6250	None	168.6250	110.9 (T1)	EMERGENCY

9. Prepared by: Name: Gwyndolyn Ozard RESL

Signature: *Gwyndolyn Ozard*

ICS 204 Date/Time: 9/26/2021 2200 Personnel Count: 12

ASSIGNMENT LIST (ICS 204 WF)

CONTROLLED UNCLASSIFIED
INFORMATION//BASIC

1. Incident Name: <p style="text-align: center; font-size: 1.2em;">FAWN</p>		2. Operational Period: Date From: 09/27/21 Date To: 09/28/21 Time From: 0700 Time To: 0700			3. Branch <p style="text-align: center; font-size: 1.5em;">I</p>		Division <p style="text-align: center; font-size: 1.5em;">Y</p>	
4. Operations Personnel:					Page 1 of 1		Yankee	
Operations Section Chief: Shane Lauderdale, Brian Giblisco (T)				Night Ops: Monty Smith				
Branch Director: Tim Perkins, Nick Clapponi (T)				Branch Safety: Keith Harston				
Division/Group Supervisor: Garret Quigley				Air Attack: Eric Hill				
5. Resources Assigned:		** Resources Below in Bold are 12 Hour **						
Resource Identifier	ALS	LWD	Leader	Personnel	Request #	Hours	Reporting Location	
STA XSH 3150A			PLUMMER, SHAWN	17	E-62	0700-0700	DP 40	
STC NEU 9230C			BARTSCH, ROBERT	17	E-26	0700-0700	DP 40	
CRW1 C-4 SUGAR PINE 1				16 +/-	C-4	0700-1900	DP 40	
W/T PVT E-27 - WELLS WATER				2	E-27	0700-0700	DP 40	
W/T PVT E-30 - H & C CONST				2	E-30	0700-0700	DP 40	
W/T PVT E-263 - FRANK FUNES			FUNES, ANTHONY	2	E-263	0700-0700	DP 40	
FALM PVT O-184 - KLEE TREE			WILLIAMS, SHANNON	2	O-184	0700-1900	DP 40	
6. Work Assignments: Fall hazard trees, and trees that threaten control lines. Hold and improve control lines. Perform tactical patrol and mop-up around structures. Assess structures for hazardous conditions and make safe. Mop up all visible heat sources. Pull Hose Lays where appropriate. Backhaul Excess Trash/Hose/Water.								
7. Special Instructions:								
8. Communications								
Name	Ch	Function	Rx Freq	Rx Tone	Tx Freq	Tx Tone	Notes	
SHA CMD T1	1	COMMAND	154.4300	136.5 (T4)	159.0150	110.9 (T1)	Halchet Mtn	
CDF T29	6	TACTICAL	151.3475	192.8 (T16)	151.3475	192.8 (T16)	Branch I	
CDF T25	14	AIR TO GROUND	159.2775	192.8 (T16)	159.2775	192.8 (T16)	Air to Ground	
CALCORD	15	MEDICAL	156.0750	156.7 (T6)	156.0750	156.7 (T6)	Medical	
GUARD	16	AIRGUARD	168.6250	None	168.6250	110.9 (T1)	EMERGENCY	
9. Prepared by: Name:		Gwyndolyn Ozard		RESL				
				Signature:		<i>Gwyndolyn Ozard</i>		
ICS 204		Date/Time: 9/26/2021		2200		Personnel Count: 58		

ASSIGNMENT LIST (ICS 204 WF)

CONTROLLED UNCLASSIFIED
INFORMATION//BASIC

1. Incident Name: <p style="text-align: center; font-weight: bold;">FAWN</p>	2. Operational Period: Date From: 09/27/21 Date To: 09/28/21 Time From: 0700 Time To: 0700	3. Branch Division <p style="text-align: center; font-size: 2em; font-weight: bold;">V M/T</p> <p style="text-align: center;">Page 1 of 2 Tango</p>
--	---	--

4. Operations Personnel:	
Operations Section Chief: Shane Lauderdale, Brian Gibilisco (T)	Night Ops: Monty Smith
Branch Director: Jake Keown, Dusty Gyves (T)	Branch Safety: Ken Marglott, Dean Gilardi
Division/Group Supervisor: Clint Swenson, Niko Matteoli (T)	Air Attack: Eric Hill

5. Resources Assigned:		** Resources Below in Bold are 12 Hour **					
Resource Identifier	ALS	LWD	Leader	Personnel	Request #	Hours	Reporting Location
STC MEU 9110C			LEONARD, ALEX	18 +/-	E-42	0700-0700	DP 10
STC BTU 9211C			BOSTON, GUS	18	E-85	0700-0700	DP 10
STC SHU 9241C			BOIC, DENNIS	18	E-184	0700-0700	DP 10
STC SHU 9242C			STENGER, DANIEL	18	E-185	0700-0700	DP 10
STC TGU 9251C			PRIVETT, DONNIE	17	E-84	0700-0700	DP 10
STG 9252G TGU (CDCR)			WELCH, ANTHONY	33 +/-	C-9	0700-0700	DP 10
STG SKU 9264G (CDCR)			PINDELL, SETH	33	C-10	0700-0700	DP 10
STG AEU 9275G (DJJ)			MARTENSEN, CODY	36	C-22	0700-0700	DP 10
DOZ PVT E-46 - SALINAS				2	E-46	0700-0700	DP 10
DOZ PVT E-71 - HARD LOGN.				2	E-71	0700-0700	DP 10
DOZ PVT E-81 - MCGOWAN			EPPERSON, JERRY	2	E-81	0700-0700	DP 10
DOZ PVT E-137 - DAVID J				2	E-137	0700-0700	DP 10
DOZ PVT E-140 - HARD LOGN				2	E-140	0700-0700	DP 10
DOZ PVT E-253 - COPPER			KUEHN, RICHARD	2	E-253	0700-0700	DP 10
W/T PVT E-53 - CONVERSE			SLCHEPPS, STEVE	2	E-53	0700-0700	DP 10
W/T PVT E-64 - WETTER				2	E-64	0700-0700	DP 10
W/T PVT E-88 - WARREN				2	E-88	0700-0700	DP 10
W/T PVT E-121 - HARRIS			MILLER, JACK	2	E-121	0700-0700	DP 10

6. Work Assignments:
Mop up 300' from control lines.
Hold and improve control lines.
Pull Hose Lays where appropriate.
Backhaul Excess Trash/Hose/Water.

7. Special Instructions:

8. Communications							
Name	Ch	Function	Rx Freq	Rx Tone	Tx Freq	Tx Tone	Notes
SHA CMD T1	1	COMMAND	154.4300	136.5 (T4)	159.0150	110.9 (T1)	Hatchet Mtn
CDF T30	7	TACTICAL	151.3925	192.8 (T16)	151.3925	192.8 (T16)	Branch V
CDF T25	14	AIR TO GROUND	159.2775	192.8 (T16)	159.2775	192.8 (T16)	Air to Ground
CALCORD	15	MEDICAL	156.0750	156.7 (T6)	156.0750	156.7 (T6)	Medical
GUARD	16	AIRGUARD	168.6250	None	168.6250	110.9 (T1)	EMERGENCY

9. Prepared by: Name:	Gwyndolyn Ozard	RESL	Signature:
ICS 204	Date/Time: 9/26/2021 2200		Personnel Count: 211

ASSIGNMENT LIST (ICS 204 WF)

CONTROLLED UNCLASSIFIED
INFORMATION//BASIC

1. Incident Name: <div style="text-align: center; font-weight: bold; font-size: 1.2em;">FAWN</div>	2. Operational Period: Date From: 09/27/21 Date To: 09/28/21 Time From: 0700 Time To: 0700	3. Branch Division <div style="text-align: center; font-size: 1.5em; font-weight: bold;">V M/T</div> <div style="text-align: center;">Page 2 of 2 Tango</div>
--	---	---

4. Operations Personnel:	
Operations Section Chief: Shane Lauderdale, Brian Gibilisco (T)	Night Ops: Monty Smith
Branch Director: Jake Keown, Dusty Gyves (T)	Branch Safety: Ken Marglott, Dean Gilardi
Division/Group Supervisor: Clint Swenson, Niko Matteoli (T)	Air Attack: Eric Hill

5. Resources Assigned:		** Resources Below in Bold are 12 Hour **					
Resource Identifier	ALS	LWD	Leader	Personnel	Request #	Hours	Reporting Location
FALM PVT O-181 - BUNDYS			COFFEY, DAVID	2	O-181	0700-1900	DP 10
FALM PVT O-183 - JENSENS			THOMAS, TRAVIS	2	O-183	0700-1900	DP 10
FEMP HOLLINGSWORTH			HOLLINGSWORTH, DUSTI		O-204	0700-0700	DP 10
FEMT LEONG			LEONG, DEREK		O-215	0700-0700	DP 10

6. Work Assignments:
Mop up 300' from control lines.
Hold and improve control lines.
Pull Hose Lays where appropriate.
Backhaul Excess Trash/Hose/Water.

7. Special Instructions:

8. Communications							
Name	Ch	Function	Rx Freq	Rx Tone	Tx Freq	Tx Tone	Notes
SHA CMD T1	1	COMMAND	154.4300	136.5 (T4)	159.0150	110.9 (T1)	Hatchet Mtn
CDF T30	7	TACTICAL	151.3925	192.8 (T16)	151.3925	192.8 (T16)	Branch V
CDF T25	14	AIR TO GROUND	159.2775	192.8 (T16)	159.2775	192.8 (T16)	Air to Ground
CALCORD	15	MEDICAL	156.0750	156.7 (T6)	156.0750	156.7 (T6)	Medical
GUARD	16	AIRGUARD	168.6250	None	168.6250	110.9 (T1)	EMERGENCY

9. Prepared by: Name:	Gwyndolyn Ozard	RESL	
Signature:			
ICS 204	Date/Time: 9/26/2021	2200	Personnel Count: 4

ASSIGNMENT LIST (ICS 204 WF)

CONTROLLED UNCLASSIFIED
INFORMATION//BASIC

1. Incident Name: <p style="text-align: center; font-weight: bold;">FAWN</p>	2. Operational Period: Date From: 09/27/21 Date To: 09/28/21 Time From: 0700 Time To: 0700	3. Branch Division <p style="text-align: center; font-size: 2em; font-weight: bold;">V U</p> Page 1 of 1 Uniform
--	---	--

4. Operations Personnel:	
Operations Section Chief: Shane Lauderdale, Brian Gibilisco (T)	Night Ops: Monty Smith
Branch Director: Jake Keown, Dusty Gyves (T)	Branch Safety: Ken Margiott, Dean Gilardi
Division/Group Supervisor: Buck Thomas	Air Attack: Eric Hill

5. Resources Assigned:	** Resources Below in Bold are 12 Hour **						
Resource Identifier	ALS	LWD	Leader	Personnel	Request #	Hours	Reporting Location
STC SKU 9260C			EMERY, SHANE	18	E-160	0700-0700	DP 10
STC XPL 4125C			HOLMES, RICK	19	E-282	0700-0700	DP 10
STG TGU 9253G (CAL FIRE)			TRIGGS, CLAYTON	34	C-12	0700-0700	DP 10
W/T RDN 7				2	E-20	0700-0700	DP 10
W/T XSH 42			CORBELL, MATT	2	E-19	0700-0700	DP 10
W/T PVT E-119 - KNIGHT			SCHAAR, ELLEN	2	E-119	0700-0700	DP 10

6. Work Assignments:
Mop up 300' from control lines.
Perform tactical patrol and mop-up around structures.
Assess structures for hazardous conditions and make safe.
Pull Hose Lays where appropriate.

7. Special Instructions:

8. Communications							
Name	Ch	Function	Rx Freq	Rx Tone	Tx Freq	Tx Tone	Notes
SHA CMD T1	1	COMMAND	154.4300	136.5 (T4)	159.0150	110.9 (T1)	Hatchet Mtn
VTAC11	9	TACTICAL	151.1375	156.7 (T6)	151.1375	156.7 (T6)	Branch V
CDF T25	14	AIR TO GROUND	159.2775	192.8 (T16)	159.2775	192.8 (T16)	Air to Ground
CALCORD	15	MEDICAL	156.0750	156.7 (T6)	156.0750	156.7 (T6)	Medical
GUARD	16	AIRGUARD	168.6250	None	168.6250	110.9 (T1)	EMERGENCY

9. Prepared by: Name:	Gwyndolyn Ozard	RESL	Signature:
ICS 204	Date/Time: 9/26/2021 2200		Personnel Count: 77

ASSIGNMENT LIST (ICS 204 WF)

CONTROLLED UNCLASSIFIED
INFORMATION//BASIC

1. Incident Name: <p style="text-align: center; font-size: 1.2em;">FAWN</p>	2. Operational Period: Date From: 09/27/21 Date To: 09/28/21 Time From: 0700 Time To: 0700	3. Branch Division <p style="text-align: center; font-size: 1.5em;">V W</p> Page 1 of 1 Whiskey
---	---	--

4. Operations Personnel:	
Operations Section Chief: Shane Lauderdale, Brian Gibilisco (T)	Night Ops: Monty Smith
Branch Director: Jake Keown, Dusty Gyves (T)	Branch Safety: Ken Margiott, Dean Gilardi
Division/Group Supervisor: Dave Hight, Anthony Pescatore (T)	Air Attack: Eric Hill

5. Resources Assigned:	** Resources Below in Bold are 12 Hour **						
Resource Identifier	ALS	LWD	Leader	Personnel	Request #	Hours	Reporting Location
STC SCU 9160C			MAIN, TIM	17	E-105	0700-0700	DP 30
STC XRI 6074C			WILLSON, BRANDON	24	E-113	0700-0700	DP 30
STB XBU 3000B			FOWLER, CHIP	16	E-60	0700-0700	DP 30
STG NEU 9234G (CDCR)			SAUER, CHRIS	30	C-11	0700-0700	DP 30
STG LNU 9141G (CDCR)			GALVAN, JUSTIN	30	C-19	0700-0700	DP 30
W/T PVT E-28 - LARSEN'S			LARSEN	2	E-28	0700-0700	DP 30
W/T XSH 72				2	E-54	0700-0700	DP 30

6. Work Assignments:
Mop up all visible heat sources.
Perform tactical patrol and mop-up around structures.
Assess structures for hazardous conditions and make safe.
Pull Hose Lays where appropriate.

7. Special Instructions:

8. Communications							
Name	Ch	Function	Rx Freq	Rx Tone	Tx Freq	Tx Tone	Notes
SHA CMD T1	1	COMMAND	154.4300	136.5 (T4)	159.0150	110.9 (T1)	Hatchet Mtn
VTAC12	10	TACTICAL	154.4525	156.7 (T6)	154.4525	156.7 (T6)	Branch V
CDF T25	14	AIR TO GROUND	159.2775	192.8 (T16)	159.2775	192.8 (T16)	Air to Ground
CALCORD	15	MEDICAL	156.0750	156.7 (T6)	156.0750	156.7 (T6)	Medical
GUARD	16	AIRGUARD	168.6250	None	168.6250	110.9 (T1)	EMERGENCY

9. Prepared by: Name:	Gwyndolyn Ozard	RESL	Signature: <i>Gwyndolyn Ozard</i>
ICS 204	Date/Time: 9/26/2021	2200	Personnel Count: 121

ASSIGNMENT LIST (ICS 204 WF)

CONTROLLED UNCLASSIFIED
INFORMATION//BASIC

1. Incident Name: <p style="text-align: center;">FAWN</p>	2. Operational Period: Date From: 09/27/21 Date To: 09/28/21 Time From: 0700 Time To: 0700	3. Branch Division <p style="text-align: center;">CONT. Jones Cont. Group</p> <p style="text-align: right;">Page 1 of 1</p>
--	---	--

4. Operations Personnel:	
Operations Section Chief: Shane Lauderdale, Brian Gibilisco (T)	Night Ops: Monty Smith
Branch Director: Shane Galvez (12 Hr)	Branch Safety:
Division/Group Supervisor:	Air Attack: Eric Hill

5. Resources Assigned:	** Resources Below in Bold are 12 Hour **						
Resource Identifier	ALS	LWD	Leader	Personnel	Request #	Hours	Reporting Location
STC OES 2870C			CONTRERAS, GARRETT	18 +/-	E-111	0700-1900	DP 10
STG MEU 9115G (CDCR)			HADRICH, KEVIN	31	C-37	0700-1900	DP 10
CRW1 C-5 SUGAR PINE 2				16 +/-	C-5	0700-1900	DP 10
DOZ PVT E-138 - KERCHER				1	E-138	0700-1900	DP 10
DOZ PVT E-143 - SCHROFF				1	E-143	0700-1900	DP 10
DOZ PVT E-256 - LA RUE			LOULL, MATT	1	E-256	0700-1900	DP 10
DOZ PVT E-257 - O'FERRALL			GARY, LOUIS	1	E-257	0700-1900	DP 10
EXC PVT E-311 - 2C LAND			ROBERTSON, JUSTIN	2	E-311	0700-1900	DP 10
EXC PVT E-323 - KRISMAN'S				2	E-323	0700-1900	DP 10
MAS PVT E-288 - HILL			HILL, STEVEN	1	E-288	0700-1900	DP 10
CHIP PVT E-339 - ACA			BAKER, JEFF	2	E-339	0700-1900	DP 10
CHIP PVT E-340 - BUNDYS			GARRETT, JUSTIN	2	E-340	0700-1900	DP 10
HEQB CIAPPONI			CIAPPONI, BRIAN	1	O-48	0700-1900	DP 10

6. Work Assignments:
Scout and construct contingency line.

7. Special Instructions:

8. Communications							
Name	Ch	Function	Rx Freq	Rx Tone	Tx Freq	Tx Tone	Notes
SHA CMD T1	1	COMMAND	154.4300	136.5 (T4)	159.0150	110.9 (T1)	Hatchet Mtn
CDF T28	5	TACTICAL	151.1825	192.8 (T16)	151.1825	192.8 (T16)	Contingency Branch
CDF T25	14	AIR TO GROUND	159.2775	192.8 (T16)	159.2775	192.8 (T16)	Air to Ground
CALCORD	15	MEDICAL	156.0750	156.7 (T6)	156.0750	156.7 (T6)	Medical
GUARD	16	AIRGUARD	168.6250	None	168.6250	110.9 (T1)	EMERGENCY

9. Prepared by: Name:	Gwyndolyn Ozard	RESL	Signature:
ICS 204	Date/Time: 9/26/2021	2200	Personnel Count: 79

ASSIGNMENT LIST (ICS 204 WF)

CONTROLLED UNCLASSIFIED
INFORMATION//BASIC

1. Incident Name: <p style="text-align: center; font-weight: bold;">FAWN</p>	2. Operational Period: Date From: 09/27/21 Date To: 09/28/21 Time From: 0700 Time To: 0700	3. Branch Group Suppression Repair Suppression Repair Page 1 of 2
--	---	--

4. Operations Personnel:	
Operations Section Chief: Shane Lauderdale, Brian Gibilisco (T)	Night Ops: Monty Smith
Branch Director: Ben Rowe (12 Hr)	Branch Safety:
Division/Group Supervisor: Kevin Mancebo (12 Hr)	Air Attack: Eric Hill

5. Resources Assigned:		** Resources Below in Bold are 12 Hour **					
Resource Identifier	ALS	LWD	Leader	Personnel	Request #	Hours	Reporting Location
CRW1 C-57 BLR 1 (CAL FIRE)			MCGRATH, DEAN	14	C-57	0700-1900	ICP
CRW1 C-58 CHAMB.2 (CAL FIRE)			CROW, PATRICK	13	C-58	0700-1900	ICP
DOZ SHA 73			STREIFF, ROB	1	E-21	0700-1900	ICP
DOZ PVT E-35 - HIGH MTN				1	E-35	0700-1900	ICP
DOZ PVT E-67 - LONE STAR			FIELDS, BRUCE	1	E-67	0700-1900	ICP
DOZ PVT E-69 - HOLMES TRUCK			HOLMES, DEE	1	E-69	0700-1900	ICP
DOZ PVT E-83 - C&C CONST				1	E-83	0700-1900	ICP
DOZ PVT E-131 - BOGGS EQT			TARBUSH, PATRICK	1	E-131	0700-1900	ICP
DOZ PVT E-132 - LAMB				1	E-132	0700-1900	ICP
DOZ PVT E-134 - SPRATT			SPRATT, ERIC	1	E-134	0700-1900	ICP
DOZ PVT E-139 - CONCRETE				1	E-139	0700-1900	ICP
DOZ PVT E-259 - CHERNOH			CHERNOH, GARRET	1	E-259	0700-1900	ICP
DOZ PVT E-260 - DEUCES				1	E-260	0700-1900	ICP
DOZ PVT E-261 - HD EXC			PETTA, GUY	1	E-261	0700-1900	ICP
W/T XSH 33				1	E-13	0700-1900	ICP
W/T WMG 41				1	E-18	0700-1900	ICP
W/T PVT E-52 - A CUT ABOVE				1	E-52	0700-1900	ICP
W/T PVT E-123 - B&G WATER			TIRI, JOHN	1	E-123	0700-1900	ICP

6. Work Assignments:
Identify and document suppression repair needs to facilitate timely completion of repairs. Implement Suppression Repair Plan.

7. Special Instructions:

8. Communications							
Name	Ch	Function	Rx Freq	Rx Tone	Tx Freq	Tx Tone	Notes
SHA CMD T1	1	COMMAND	154.4300	136.5 (T4)	159.0150	110.9 (T1)	Hatchet Mtn
VTAC13	11	TACTICAL	158.7375	156.7 (T6)	158.7375	156.7 (T6)	FSR Branch
CDF T25	14	AIR TO GROUND	159.2775	192.8 (T16)	159.2775	192.8 (T16)	Air to Ground
CALCORD	15	MEDICAL	156.0750	156.7 (T6)	156.0750	156.7 (T6)	Medical
GUARD	16	AIRGUARD	168.6250	None	168.6250	110.9 (T1)	EMERGENCY

9. Prepared by: Name:	Gwyndolyn Ozard	RESL	Signature:
ICS 204	Date/Time: 9/26/2021	2200	Personnel Count: 43

ASSIGNMENT LIST (ICS 204 WF)

CONTROLLED UNCLASSIFIED INFORMATION//BASIC

1. Incident Name: FAWN	2. Operational Period: Date From: 09/27/21 Date To: 09/28/21 Time From: 0700 Time To: 0700	3. Branch Group Suppression Repair Suppression Repair
---	---	---

4. Operations Personnel:		Page 2 of 2
Operations Section Chief: Shane Lauderdale, Brian Gbilisco (T)	Night Ops: Monty Smith	
Branch Director: Ben Rowe (12 Hr)	Branch Safety:	
Division/Group Supervisor: Kevin Mancebo (12 Hr)	Air Attack: Eric Hill	

5. Resources Assigned:	** Resources Below in Bold are 12 Hour **						
Resource Identifier	ALS	LWD	Leader	Personnel	Request #	Hours	Reporting Location
W/T PVT E-125 - BEARDSLEY EQU			BEARDSLEY, JESSE	1	E-125	0700-1900	ICP
W/T PVT E-128 - DIG IT CONST			MCGUIRE, JOSHUA	1	E-128	0700-1900	ICP
W/T PVT E-322 - COTTONWOOD			VARGAS, RICHIE	1	E-322	0700-1900	ICP
GDR PVT E-290 - LET-ER-BUCK			ANDREWS, DON	1	E-290	0700-1900	ICP
EXC PVT E-289 - 2C LAND			KRISMAN, TYLER	2	E-289	0700-1900	ICP
HEQB STRANGE			STRANGE, RICHARD	1	O-43	0700-1900	ICP
HEQB BROWN (T)			BROWN, CHARLES	1	O-46	0700-1900	ICP
HEQB HAGAN			HAGAN, JEFFREY	1	O-34	0700-1900	ICP

6. Work Assignments:
Identify and document suppression repair needs to facilitate timely completion of repairs. Implement Suppression Repair Plan.

7. Special Instructions:

3. Communications							
Name	Ch	Function	Rx Freq	Rx Tone	Tx Freq	Tx Tone	Notes
SHA CMD T1	1	COMMAND	154.4300	136.5 (T4)	159.0150	110.9 (T1)	Hatchet Min
/TAC13	11	TACTICAL	158.7375	156.7 (T6)	158.7375	156.7 (T6)	FSR Branch
DDF T25	14	AIR TO GROUND	159.2775	192.8 (T16)	159.2775	192.8 (T16)	Air to Ground
CALLCORD	15	MEDICAL	156.0750	156.7 (T6)	156.0750	156.7 (T6)	Medical
GUARD	16	AIRGUARD	168.6250	None	168.6250	110.9 (T1)	EMERGENCY

1. Prepared by: Name: Gwyndolyn Ozard	RESL	Signature:
CS 204	Date/Time: 9/26/2021 2200	Personnel Count: 9

ASSIGNMENT LIST (ICS 204 WF)

CONTROLLED UNCLASSIFIED
INFORMATION//BASIC

1. Incident Name: <p style="text-align: center; font-weight: bold; font-size: 1.2em;">FAWN</p>	2. Operational Period: Date From: 09/27/21 Date To: 09/28/21 Time From: 0700 Time To: 0700	3. Branch Staging <p style="text-align: center; font-weight: bold; font-size: 1.2em;">Anderson Staging</p> Page 1 of 1
--	---	--

4. Operations Personnel:	
Operations Section Chief: Shane Lauderdale, Brian Gibilisco (T)	Night Ops: Monty Smith
Branch Director:	Branch Safety:
Division/Group Supervisor: Tyler Hullquist (12 Hr)	Air Attack: Eric Hill

5. Resources Assigned:	** Resources Below in Bold are 12 Hour **						
Resource Identifier	ALS	LWD	Leader	Personnel	Request #	Hours	Reporting Location
DOZ PVT E-144 - INGRAM			GRABLE, RYAN	2	E-144	0700-0700	ICP
DOZ PVT E-252 - FLOODGATE			CLEGG, TRAVIS	2	E-252	0700-0700	ICP
DOZ PVT E-262 - NORTHWESTER				2	E-262	0700-0700	ICP

6. Work Assignments:
Maintain 3-minute response time.

7. Special Instructions:

8. Communications

Name	Ch	Function	Rx Freq	Rx Tone	Tx Freq	Tx Tone	Notes
SHA CMD T1	1	COMMAND	154.4300	136.5 (T4)	159.0150	110.9 (T1)	Hatchet Mtn
VG CDF T25	14	AIR TO GROUND	159.2775	192.8	159.2775	192.8	Air to Ground
CALCORD	15	MEDICAL	156.0750	156.7 (T6)	156.0750	156.7 (T6)	Medical
GUARD	16	AIRGUARD	168.6250	None	168.6250	110.9 (T1)	EMERGENCY

9. Prepared by: Name: Gwyndolyn Ozard RESL

Signature: Personnel Count: 6

CS 204 Date/Time: 9/26/2021 2200



SAFETY MESSAGE

FAWN INCIDENT

CA_SHU_010480

September 27, 2021 0700-0700



S
A
F
E
T
Y

S
A
F
E
T
Y

S
A
F
E
T
Y

DRIVING

INCREASE IN TRAFFIC WITH NARROW WINDING ROADS

Watch Out – Increase in traffic

- Emergency vehicles engaged in suppression and mop up
- Multiple agencies in and amongst the fire repairing and evaluating infrastructure
- Narrow roads with steep drop offs in areas

Mitigation – Brief all resources

- Utilize lights, cones, or other warning devices
- Have a traffic plan for narrow one lane roads and communicate the plan
- **SLOW DOWN!!!** Drive respectfully

UNDERSTANDING THE PLAN

MULTIPLE AGENCIES WORKING IN COORDINATION

Watch Out

- Operational briefing not being passed down to lowest level
- Objectives not clear
- Lack of participation at briefings

Mitigations

- Leaders have the responsibility to provide complete briefings and ensure that subordinates have a clear understanding of their intent
- All personnel who have not received a briefing shall notify their direct supervisor prior to engaging
- Supervisors will ensure briefings are attended

OPERATE WITHIN YOUR LIMITS

WORK / REST QUALIFICATIONS

Watch Out

- **Mop up** can include roll out, snags, and uneven footing. Watch for ash pits and stump holes
- **Hot weather** can lead to dehydration, heat illness, serious medical emergencies
- **Working beyond capabilities** can lead to a failure to identify risks

Mitigation

- Stay alert, preplan actions, communicate, and have a look out. Identify and flag ash pits
- Proper nutrition, rest and hydration reduces fatigue and exhaustion emergencies
- Know your qualification level and be honest about capabilities

SAFETY IS EVERYONES RESPONSIBILITY

Todd Horton

IMT 4 SAFETY OFFICER



E
V
E
R
Y
O
N
E
S

R
E
S
P
O
N
S
I
B
I
L
I
T
Y



INCIDENT ACTION PLAN SAFETY ANALYSIS (ICS 215A)



1. Incident Name: FAWN		2. Incident Number: 21-CA-SHU-010480
3. Date/Time Prepared: Date: 09/26/2021 Time: 1700 hours		4. Operational Period: Date From: 09/27/2021 To: 09/28/2021 Time From: 0700 hours To: 0700 hours
5. Incident Area	6. Hazards/Risks	7. Mitigations
DIV. A, B, T, U, W	Driving	Plan ahead. Slow down and expect increased traffic. Lights on and drive with respect.
DIV. A, B, T, U, W	Hazardous Trees	IRPG Pg 22: Identify and Flag Hazardous Trees. Eliminate hazardous trees with qualified sawyers or heavy equipment.
DIV. A, B, T, U, W	Dehydration / Rhabdomyolysis	With the long operational shifts and low humidity's, maintain your crews' water and caloric intake regimen.
DIV. A, B, T, U, W	Changing Weather	Northerly Winds are predicted to reverse and become Southerly... Be Aware and Prepare for the weather transition.
DIV. B, T, U	Helicopters - Water Drops and Turbulence	Post lookouts and make escape routes and safety zones known. LCES. Watch overhead for hazard trees and wind changes.
DIV. B, T, U	Steep, unstable terrain	Watch footing and maintain downhill tool placement. Be aware of loose material. Look for ash pits and stump holes.
DIV. A, B, T, U, W	Unburned areas	LCES - utilize worst case scenario when working in or around pockets of unburned fuels.
DIV. A, B, T, U, W	Working around heavy equipment	Maintain eye-to-eye contact with the operator. Have fire suppression support when operating in dry fuels
DIV. A, B, T, U, W	Personal Protective Equipment (PPE)	Wear appropriate PPE for all operations until your supervisor indicates it's safe to remove.
DIV. A, B, T, U, W	Highway 5 Old Oregon Trail and Bear Mountain Road: CAL TRANS and Utilities working along the roadway	Drive slow through the construction areas. Expect delays along all travel routes.
ALL areas of the incident including the ICP and Hotels	COVID-19: Reduce exposure potential to yourself, your crew and the public	Maintain 6' of social distance. Wash hands frequently and for at least 20 seconds. Wear a mask when appropriate.
DIV. A, B, T, U, W	Powerlines /Compromised Power Poles and Utility Workers	LOOK UP and LOOK DOWN... Communicate utility hazards, and flag those to prevent injury of other crews.
Ground Support	Personnel and vehicles moving around one another in tight areas	Chock wheels. Use spotters and backers. Follow mechanic direction.
8. Prepared by (Safety Officer): Name: Douglas M Ferro		Signature: 
Prepared by (Deputy Operations Section Chief): Name: Shawn Raley		Signature: 
ICS 215A	Date/Time: 09.26.2021 1700 Hours	

ICS 205 - INCIDENT RADIO COMMUNICATIONS PLAN

1. Incident Name: FAWN Incident Channels		2. Date/Time Prepared Date: 09/26/2021 Time: 1930		3. Operational Period: Date To: 09/28/21 Time To: 0700				
4. Communications								
Ch#	Function	Name	Assigned To	Rx Freq	Rx Tone	Tx Freq	Tx Tone	Notes
1	COMMAND	SHA CMD T1	ALL DIVS	154.4300	136.5 (T4)	159.0150	110.9 (T1)	Hatchet Mtn
2	COMMAND	SHA CMD T2	ALL DIVS	154.4300	136.5 (T4)	159.0150	123.0 (T2)	Bass Mtn
3								
4	TACTICAL	CDF T23	DIV A/B	159.4500	192.8 (T16)	159.4500	192.8 (T16)	Branch I
5	TACTICAL	CDF T28	Jones Cont.	151.1825	192.8 (T16)	151.1825	192.8 (T16)	Contingency Branch
6	TACTICAL	CDF T29	DIV Y	151.3475	192.8 (T16)	151.3475	192.8 (T16)	Branch I
7	TACTICAL	CDF T30	DIV M/T	151.3925	192.8 (T16)	151.3925	192.8 (T16)	Branch V
8	TACTICAL	CDF T31	UNASSIGNED	159.3825	192.8 (T16)	159.3825	192.8 (T16)	UNASSIGNED
9	TACTICAL	VTAC11	DIV U	151.1375	156.7 (T6)	151.1375	156.7 (T6)	Branch V
10	TACTICAL	VTAC12	DIV W	154.4525	156.7 (T6)	154.4525	156.7 (T6)	Branch V
11	TACTICAL	VTAC13	Supp Repair	158.7375	156.7 (T6)	158.7375	156.7 (T6)	FSR Branch
12								
13								
14	AIR TO GROUND	CDF T25	ALL DIVS	159.2775	192.8 (T16)	159.2775	192.8 (T16)	Air to Ground
15	MEDICAL	CALCORD	ALL DIVS	156.0750	156.7 (T6)	156.0750	156.7 (T6)	Medical
16	AIRGUARD	GUARD	ALL DIVS	168.6250	None	168.6250	110.9 (T1)	EMERGENCY
17								
18								
19								
20	AIRGUARD	GUARD	ALL DIVS	168.6250	None	168.6250	110.9 (T1)	EMERGENCY
5. Special Instructions								
The current clone for 9/27/21 is FAWN2 which is the name of the clone group, FAWN communications 24/7 phone number is 916-883-0934								
6. Prepared by (Communications Unit Leader): Name: Mike Heyfron			Signature: <i>Mike Heyfron</i>					
ICS 205 - CONTROLLED UNCLASSIFIED INFORMATION/BASIC			Date/Time: 09/26/21 1930					

MEDICAL PLAN (ICS 206)

1. Incident Name: <p style="text-align: center;">FAWN</p>		2. Operational Period: Date From: 9/27/21 Date To: 9/28/21 Time From: 0700 Time To: 0700					
3. Medical Aid Stations:							
Name	Location	Contact Number/Freq	Paramedics				
CALMAT	BASE CAMP	916-605-6287	MD				
MERT	BASE CAMP	916-753-4001	PA				
4. Transportation (indicate air or ground):							
Ambulance Service	Location	Contact Number	Level of Service				
AMR, DIGNITY (GROUND)	SHASTA COUNTY	FAWN COMMS	ALS				
PHI AIR MED (AIR)	REDDING	FAWN COMMS	RN				
CHP 14 & 16 (DAY HOIST)	REDDING	FAWN COMMS	ALS				
GUARD 841 (24 HOUR HOIST)	REDDING	FAWN COMMS	ALS				
5. Hospitals:							
Hospital Name	Address,	Contact Number(s)/ Frequency	Travel Time		Trauma Center	Burn Center	Helipad
	Lat & Long		Air	Ground			
Shasta Regional Medical Center Redding	1100 Butte St, N 40°35.100', W 122°23.280'	(530)244-5400 468.025 Tx, 468.025 Rx	5 MIN	15 MIN	Level 3	<input type="checkbox"/>	<input checked="" type="checkbox"/>
Mercy Medical Center Redding	2175 Rosaline Ave, N 40°34.330', W 122°23.800'	(530)225-7201 468.075 Tx 463.000 Rx	5 MIN	15 MIN	Level 2	<input type="checkbox"/>	<input checked="" type="checkbox"/>
UC Davis Medical Center Sacramento	2315 Stockton Blvd, N 38°33.380', W 121°27.350'	(916)734-3790 446.525 Tx, 203.500 Rx	1 HOUR	3.5 HOURS	Level 1	<input checked="" type="checkbox"/>	<input checked="" type="checkbox"/>
6. Special Medical Emergency Procedures							
Line Emergency Crew Supervisor will contact Division Supervisor with patient complaint/condition and location. - Division Group Supervisor Contacts: 1. Closest EMS resource 2. Communications Unit - Communications Unit Contacts: 1. Ground or Air ambulance as requested. 2. Operations 3. Safety 4. Medical Unit - Division Supervisor or designee will serve as point of contact and run medical emergency on assigned channel. 1. A pre-assigned tactical frequency (i.e. CALCORD) should be used for IWI and only for duration of the emergency. - Communications Unit will clear the Command channel for emergency traffic as needed for duration of the need. Camp Emergency Contact Medical Unit with patient complaint/condition and location. Medical staff will respond to stabilize the patient. - Medical Unit contacts 1. Communications 2. Safety 3. Logistics 4. Operations 5. Crew Supervisor 6. Comp/Claims				Injury Reporting Procedures Nature of Injury: _____ Location of Patient: _____ Point of Contact: _____ Transportation Requested by: Air _____ Ground _____ Point of Pick-Up: _____ Lat: _____ Long: _____ Patient Unit ID: _____ Is an EMT with Patient: Yes _____ No _____ Age: _____ Sex: Male _____ Female _____ All Emergencies - Secure the area and identified witnesses for later investigation. Keep accurate log of events. <p style="text-align: center;">*****IN CAMP EMERGENICES***** 916-883-0934</p>			
<input type="checkbox"/> Check box if aviation assets are utilized for rescue. If assets are used, coordinate with Air Operations.							
7. Prepared by (Medical Unit Leader): <p style="text-align: center;">Steve McGary</p>				Signature: 			
8. Approved by (Safety Officer): <p style="text-align: center;">Doug Ferro, Jack Piccini, Bill Murphy (T)</p>				Signature: 			
ICS 206		NIMS IAP		Date/Time: 9/26/21		1900	

STATE OF CALIFORNIA
 DEPARTMENT OF FORESTRY AND FIRE PROTECTION
PROPERTY CERTIFICATION OF LOCATION OR DAMAGE
CERTIFICATE OF RESPONSIBILITY FOR INCIDENT OCCURRENCE
 CAL FIRE-101 page 1 of 2 (1/07)

Incident#:
Request #:

DOC. NUMBER:

LOCATION / INCIDENT NAME: INCIDENT NUMBER: UNIT: REGION: DATE:

THE FOLLOWING ARTICLES WERE: (broken, left on line, damaged, or other) DATE OF OCCURANCE:

QUANTITY	UNIT OF MEAS.	CAL FIRE STOCK NUMBER (COMPLETE WHENEVER ASSIGNED)	DESCRIPTION (INDICATE SIZE, MAKE, MODEL, TYPE, ETC., TO CLEARLY DESCRIBE THE ITEM, PROVIDE ADEQUATE DATA TO EFFECTIVELY IDENTIFY EQUIPMENT OR PROPERTY.)	PROPERTY NUMBER

DIV:_____ Div's Name:_____
Div. Signature:_____
 Attention Division Group Sup., by signing you are authorizing the above items to be replaced by the Supply Unit and / or Fire.

LOCATION OF ITEMS:

REMARKS:

SIGNATURE OF PERSON CERTIFYING OCCURANCE AS DESCRIBED

SIGNATURE: PRINTED NAME: TITLE: DATE:

UNIT SUPERVISOR'S APPROVAL

COMMENTS:

SIGNATURE OF UNIT ADMINISTRATOR: TITLE: DATE:



FAWN FIRE **INFORMATION SHEET**



Fire Information Line: **(530)448-2466**

Please scan the QR Below for CAL FIRE's Social Media Policy 0691.



INCIDENT MAIL

The PIO Trailer will receive mail/packages shipped to the Incident. Please ensure all mail addressed to the incident follows the format below:

(YOUR NAME, YOUR ORDER NUMBER)
C/O FAWN FIRE BASE CAMP
PUBLIC INFORMATION TRAILER
SHASTA DISTRICT FAIRGROUNDS
1890 BRIGGS ST, ANDERSON, CA 96007

LOST AND FOUND

Any items that are found, please bring them to the PIO Trailer located at the entrance to Base Camp and leave them with PIO staff. Please leave your name and contact information and description of lost items so we can attempt to reunite you with your items.

TRAINING MESSAGE

“ATTENTION”

TRAINEES, IF YOU KNOW THAT YOU ARE BEING DEMOBED, PLEASE SEE TRAINING TO CLOSE OUT YOUR PAPERWORK PRIOR TO DEMOB

TRAINEES – For close out

- **Bring in your completed task book**
- **Bring your completed task book evaluation record**
- **Bring your completed ICS 225**





CAL-FIRE INCIDENT MANAGEMENT TEAM 4



24HR LINE RESOURCE - 2 OPERATOR

EMERGENCY SHIFT TICKET and EVALUATION FORM		The responsible Government Officer will complete this form each shift.	
Incident or Project Name MISSION	Incident Number CA-MMU-018115	Request Number E-444	Contractor Name THE BEST DOZERS LLC
Agreement Number	Operator #1 FIRST & LAST	Operator #2 FIRST & LAST	Operator Furnished By: <input checked="" type="checkbox"/> Contractor <input type="checkbox"/> Government
Equipment Make 1999 PETERBILT 379	Equipment Model / Type TRANSPORT 18 WHEEL	License Number 12345A1	Operating Supplies Furnished By: <input checked="" type="checkbox"/> Contractor <input type="checkbox"/> Government
Serial Number COMPLETE VIN#	License Number	Equipment Status <input checked="" type="checkbox"/> Under Agreement	Released by Government <input type="checkbox"/> Inspected <input checked="" type="checkbox"/> Under Agreement
Remarks/Comments**			
Vendor Rating			
Poor*	Avg.	Good	Exc.
Meet Performance Expectations Equipment in Safe Working Condition Operator Skill Level Operates Safely Operator's Cooperation Level Overall Performance			
VENDOR RATING MUST BE DONE			
Date Mo / Day	Start	Stop	Time
9/6	0701	2400	0700
Equipment Use (Circle) Hours Days / Miles Assignment 9/6 0001 2400 7 DIV X 9/6 0701 1900 7 DIV X			
Govt. Rep. Name and Position - PRINT Print Your Name Govt. Rep. Signature Operator Signature Contractor Signature Date 9/6/20 Time 0700 CAL FIRE 297 (Rev 3-2011)			

12HR LINE RESOURCE - 1 OPERATOR

EMERGENCY SHIFT TICKET and EVALUATION FORM		The responsible Government Officer will complete this form each shift.	
Incident or Project Name MISSION	Incident Number CA-MMU-018115	Request Number E-555	Contractor Name THE BEST DOZERS LLC
Agreement Number	Operator #1 FIRST & LAST	Operator #2	Operator Furnished By: <input checked="" type="checkbox"/> Contractor <input type="checkbox"/> Government
Equipment Make 2004 CAT	Equipment Model / Type D6N / TYPE II E	License Number	Operating Supplies Furnished By: <input checked="" type="checkbox"/> Contractor <input type="checkbox"/> Government
Serial Number COMPLETE VIN#	License Number	Equipment Status <input type="checkbox"/> Inspected <input checked="" type="checkbox"/> Under Agreement	Released by Government <input type="checkbox"/> Withdrawn by Contractor
Remarks/Comments**			
Vendor Rating			
Poor*	Avg.	Good	Exc.
Meet Performance Expectations Equipment in Safe Working Condition Operator Skill Level Operates Safely Operator's Cooperation Level Overall Performance			
VENDOR RATING MUST BE DONE			
Date Mo / Day	Start	Stop	Time
9/7	0001	0700	12
Equipment Use (Circle) Hours Days / Miles Assignment 9/7 0701 1900 12 OFF SHIFT 9/7 1901 2400 5 OFF SHIFT			
Govt. Rep. Name and Position - PRINT Print Your Name Govt. Rep. Signature Operator Signature Contractor Signature Date 9/7/20 Time 1900 CAL FIRE 297 (Rev 3-2011)			

24HR / 12HR TRANSITION SHIFT TICKET

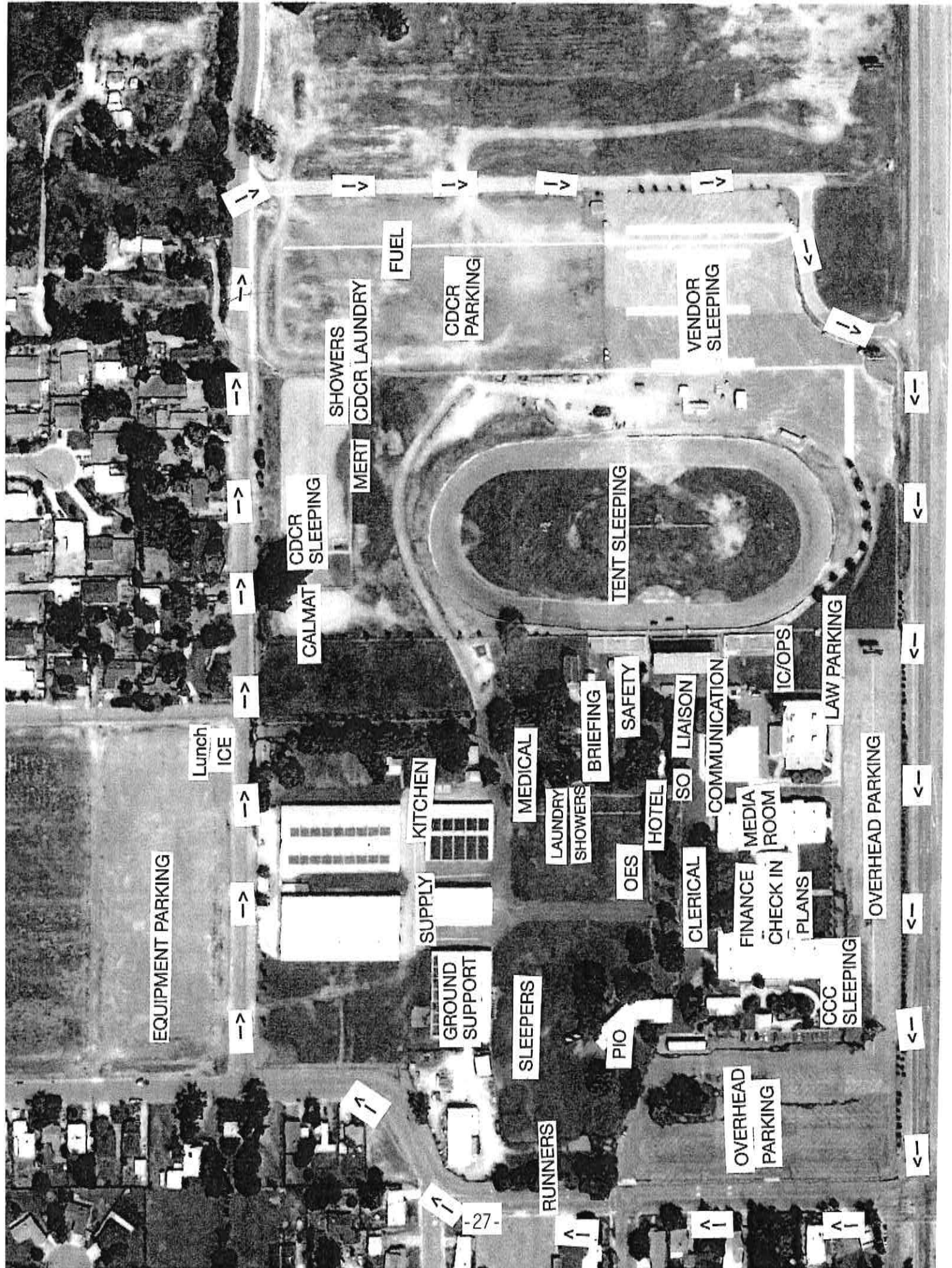
EMERGENCY SHIFT TICKET and EVALUATION FORM		The responsible Government Officer will complete this form each shift.	
Incident or Project Name MISSION	Incident Number CA-MMU-018115	Request Number E-444	Contractor Name THE BEST DOZERS LLC
Agreement Number	Operator #1 FIRST & LAST	Operator #2 FIRST & LAST	Operator Furnished By: <input checked="" type="checkbox"/> Contractor <input type="checkbox"/> Government
Equipment Make 1999 PETERBILT 379	Equipment Model / Type TRANSPORT 18 WHEEL	License Number 12345A1	Operating Supplies Furnished By: <input checked="" type="checkbox"/> Contractor <input type="checkbox"/> Government
Serial Number COMPLETE VIN#	License Number	Equipment Status <input checked="" type="checkbox"/> Under Agreement	Released by Government <input type="checkbox"/> Inspected <input checked="" type="checkbox"/> Under Agreement
Remarks/Comments**			
Vendor Rating			
Poor*	Avg.	Good	Exc.
Meet Performance Expectations Equipment in Safe Working Condition Operator Skill Level Operates Safely Operator's Cooperation Level Overall Performance			
VENDOR RATING MUST BE DONE			
Date Mo / Day	Start	Stop	Time
9/6	0701	1900	12
Equipment Use (Circle) Hours Days / Miles Assignment 9/6 1901 2400 5 OFF SHIFT			
Govt. Rep. Name and Position - PRINT Print Your Name Govt. Rep. Signature Operator Signature Contractor Signature Date 9/6/20 Time 1900 CAL FIRE 297 (Rev 3-2011)			

24HR IN CAMP RESOURCE

EMERGENCY SHIFT TICKET and EVALUATION FORM		The responsible Government Officer will complete this form each shift.	
Incident or Project Name MISSION	Incident Number CA-MMU-018115	Request Number E-333	Contractor Name THE BEST CAMP LLC
Agreement Number	Operator #1 FIRST & LAST	Operator #2	Operator Furnished By: <input checked="" type="checkbox"/> Contractor <input type="checkbox"/> Government
Equipment Make TENT	Equipment Model / Type 20 X 30	License Number	Operating Supplies Furnished By: <input checked="" type="checkbox"/> Contractor <input type="checkbox"/> Government
Serial Number	License Number	Equipment Status <input type="checkbox"/> Inspected <input checked="" type="checkbox"/> Under Agreement	Released by Government <input type="checkbox"/> Withdrawn by Contractor
Remarks/Comments**			
Vendor Rating			
Poor*	Avg.	Good	Exc.
Meet Performance Expectations Equipment in Safe Working Condition Operator Skill Level Operates Safely Operator's Cooperation Level Overall Performance			
VENDOR RATING MUST BE DONE			
Date Mo / Day	Start	Stop	Time
9/2	0001	2400	24
Equipment Use (Circle) Hours Days / Miles Assignment 9/2 0001 2400 24 ICP			
Govt. Rep. Name and Position - PRINT Print Your Name Govt. Rep. Signature Contractor Signature Date 9/2/20 Time 1900 CAL FIRE 297 (Rev 3-2011)			

* NOTE: any rating of POOR requires an explanation in Comment Section.
 ** Final evaluation or for more documentation, use a CALFIRE Form 230 or equivalent.

THIS PAGE LEFT INTENTIONALLY BLANK



EQUIPMENT PARKING

Lunch
ICE

CALMAT
CDCR SLEEPING

SHOWERS
CDCR LAUNDRY

FUEL

CDCR
PARKING

TENT SLEEPING

VENDOR
SLEEPING

KITCHEN

SUPPLY

GROUND
SUPPORT

SLEEPERS

MEDICAL

LAUNDRY
SHOWERS

BRIEFING

SAFETY

HOTEL

SO LIAISON

COMMUNICATION

IC/OPS

LAW PARKING

OVERHEAD PARKING

CLERICAL

FINANCE
MEDIA
CHECK IN ROOM

PLANS

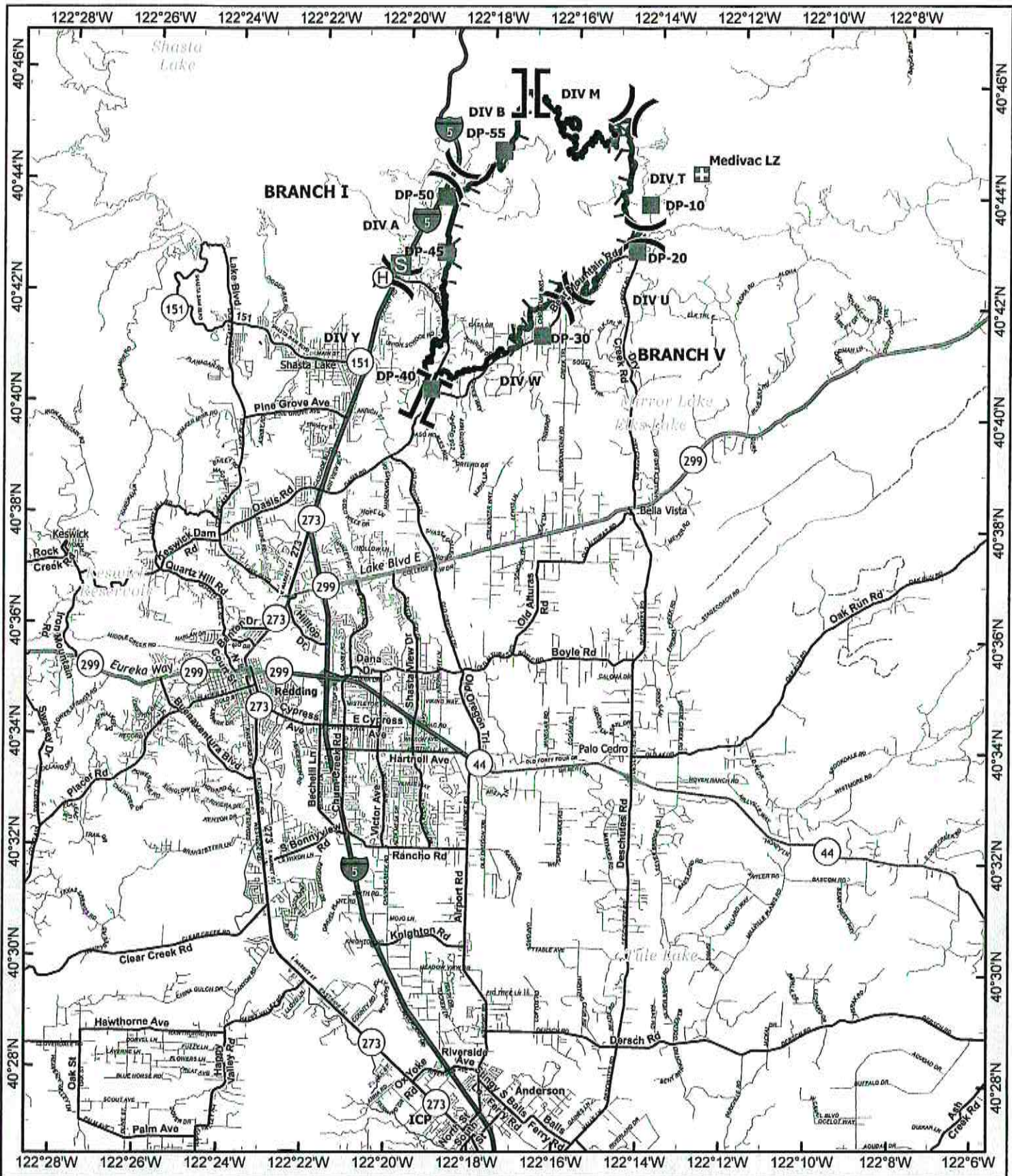
CCC
SLEEPING

PIO

OVERHEAD
PARKING

RUNNERS

-27-



- | | |
|-------------------------|----------------------------|
| ⊕ Hellbase | ⊠ Staging Area |
| ⌘ Division Break | ⊗ Completed Dozer Line |
| ⌚ Branch Break | H - Completed Hand Line |
| ⊠ Medical | R - Completed Road as Line |
| ⊠ Incident Command Post | ▭ Fire Edge |
| ■ Drop Point | ▬ Contained Line |

TRAVEL MAP
Fawn Incident
CA-SHU-010480



UNIT LOG (ICS 214)

1. Incident Name: FAWN	2. Operational Period:	Date From: 9/27/21	Date To: 9/28/21	Time From: 0700	Time To: 0700
----------------------------------	-------------------------------	--------------------	------------------	-----------------	---------------

3. Unit Name/Designators	4. Unit Leader (Name and ICS Position)
---------------------------------	---

5. Personnel Assigned/Designators

NAME	ICS POSITION	HOME BASE

6. Activity Log (Continue on Reverse)

TIME	MAJOR EVENTS

7. Prepared By:	Date/Time:	<small>NIMS IAP</small>
------------------------	-------------------	-------------------------

