

\* CORRECTED \*

# INCIDENT ACTION PLAN

# FAWN INCIDENT

CA-SHU-010480



## OPERATIONAL PERIOD

9/27/2021 0700

to

9/28/2021 0700

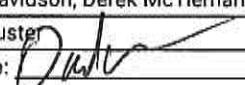


**THIS PAGE LEFT INTENTIONALLY BLANK**





## ORGANIZATION ASSIGNMENT LIST (ICS 203)

<b>1. Incident Name:</b> FAWN		<b>2. Operational Period: Date From:</b> 9/27/2021		<b>Date To:</b> 9/28/2021	
		<b>Time From:</b> 0700		<b>Time To:</b> 0700	
<b>3. Incident Commander(s) and Command Staff:</b>			<b>7. Operation Section:</b>		
IC/UC's	Geoff Pemberton, Scott Corn (T), Bob Counts (T)	Operations	Shane Lauderdale, Brian Gibilisco (T)		
Deputy	Darryl Laws	Deputy Operations	Josh Bischof, Shawn Raley		
Safety Officer	Doug Ferro, Jack Piccini, Bill Murphy (T)	Night Ops	Monty Smith		
Information Officer	Steve Kaufmann, Chris Harvey (T)	Staging Area			
Liaison Officer	Dave Pender, Ron Karlen (T)	Branch	I	Tim Perkins, Nick Ciapponi (T)	
LEO Liaison	Glen Twyman, Josh Allen, Rich Lee (T)	Division/Group	A/B	Jason Collins, <del>Scott Irvine (T)</del>	
<b>4. Agency/Organization Representatives:</b>		Division/Group	Y	Garret Quigley	
Agency/Organization	Name	Division/Group			
Shasta County FD	Brett Gouvea	Division/Group			
Redding FD	Jerrod Vanlandingham	Division/Group			
Shast Lake FPD	Dennis Beck	Branch	V	Jake Keown, Dusty Gyves (T)	
Mountain Gate FPD	Devin Owens	Division/Group	M/T	Clint Swenson, Niko Matteoli (T)	
USFS	Sara Acridge	Division/Group	U	Buck Thomas	
Shast County SO	Michael Johnson	Division/Group	W	Dave Hight, Anthony Pescatore (T)	
CDCR	Roy Ulatan	Division/Group			
CAL OES	Patrick Titus	Division/Group			
Redding PD	Bill Schueller	Branch	CONT.	Shane Galvez (12 Hr)	
CHP	Kevin Alexander	Division/Group	Jones Cont. Group		
American Red Cross	Nuriddin Ziyodinor	Division/Group			
		Branch	Suppression Repair	Ben Rowe (12 Hr)	
		Division/Group	Suppression Repair	Kevin Mancebo (12 Hr)	
		Division/Group	Suppression Repair	SCOTT IRVINE (12 Hr)	
		Staging Area	Anderson Staging	Tyler Hullquist (12 Hr)	
		Division/Group			
<b>5. Planning Section:</b>		Division/Group			
Chief	Chris Burch	Division/Group			
Deputy	Dave Shy	Division/Group			
Resource Unit	Gwyndolyn Ozard, Nochella Ozard, David Newell, Sean Birkimer (T)	Division/Group			
Situation Unit	Brandon Strohbehn, Brian Torosian (T)	Branch			
Documentation Unit	Allyson Liang	Division/Group			
Demobilization Unit	Floyd Horn	Division/Group			
GISS	Dresselhaus, Wilson, Wallingford	Division/Group			
FBAN	Jonathan Pangburn	Division/Group			
IMET	Ryan Walbrun, Julie Malingowski (T)	Division/Group			
Training Tech Spec	Jim Rustice	Air Operations Branch	Director:	Greg Bradshaw	
<b>6. Logistics Section</b>		Air Support Group Supervisor	Ray Gomez		
Chief	Matt Reich	Air Tactical Group Supervisor	Eric Hill		
Deputy	Mathew Brandt	Helibase Manager	Rick Boman		
Supply Unit	Shawn Burris	<b>8. Finance/Administration Section:</b>			
Facilities Unit	Travis Heard, Matt Brown (T)	Chief	Mara Zaver		
Ground Support Unit	Conor Stapleton, Jacob Dean (T)	Deputy	Rob Jenkins		
Communications Unit	Mike Heyfron	Time Unit	Shane Beck, Greg Tunzi (T)		
Medical Unit	Steve McGary	Procurement Unit	Brock Chapin		
Motel Unit	Dawn Muschetto	Comp/Claims Unit	Sean Bowe		
Food Unit	Jesse McGuire	Cost Unit	Angela Davidson, Derek McTiernan (T)		
Ordering Manager	Daniel Williams, Brent Lee, Robyn Sease	Purchasing	Amber Custer		
<b>Prepared By: Name:</b>	David Shy	<b>Position/Title:</b>	PSC	<b>Signature:</b>	
<b>ICS 203</b>		<b>Date/Time:</b>	9/26/2021 2300 hours		



## Fawn Fire Weather Forecast



FORECAST NO: 2  
 PREDICTION FOR: 0700-0700  
 SHIFT DATE: Mon 9/27-Tue 9/28  
 FORECAST ISSUED: 1900 9/26/2021

NAME OF FIRE:Fawn  
 UNIT: Shasta-SHU  
 SIGNED: *Ron Wally*  
 Incident Meteorologist

### Cold frontal passage late this afternoon and evening

**WEATHER DISCUSSION:** Increasing clouds this morning ahead of an incoming cold front. Humidity values may be at their lowest around midday but then increase late afternoon as the front approaches. Southwest winds will increase after 1400 hours then become gusty through sunset just ahead of the cold front. A few rain showers may accompany the frontal passage but rain amounts generally less than a tenth. **The most critical period when winds will be strongest will be late afternoon hours through sunset. Be aware of switching winds that could impact fire weakened trees.** Winds will quickly shift west to northwest behind the front overnight into Tuesday morning. The airmass behind the front will be much colder with lows into the 40s with good humidity recovery.

### WEATHER FORECAST FOR MONDAY:

**WEATHER:** Increasing clouds and becoming breezy afternoon hours with a slight chance of rain showers.

**TEMPERATURES:** Highs in the mid 70s (4-8 degrees cooler than yesterday)

**HUMIDITY:** Lowering 40-50% briefly around midday then rising 60% late afternoon as front approaches.

#### **20 FT WINDS:**

**RIDGETOP** - Southwest 6-12 mph afternoon gusts 15-20 mph.

**SLOPE/VALLEY** - Light winds until mid-morning then southerly 4-8 mph gusts 10-15 mph.

**HAINES INDEX: 3 STABILITY/INVERSION:** Moderate morning inversion lifting by 1100 hours.

### WEATHER FORECAST FOR MONDAY NIGHT:

**WEATHER:** 20-30 percent chance of rain showers. Rain amounts a tenth or less. Breezy and cooler.

**TEMPERATURES:** Lows 45-50 (5-10 degrees cooler than yesterday)

**HUMIDITY:** Good recovery before midnight of 70% with full recovery overnight.

#### **20 FT WINDS:**

**RIDGETOP** - Southwest 10-20 mph early evening switching Westerly 10-20 mph gusts 30 mph.

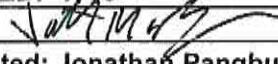
**SLOPE/VALLEY** - Southwest evening winds to 15 mph turning West/Northwest 8-18 mph.

**HAINES INDEX: 2 STABILITY/INVERSION:** Weak or no inversion forecast given the frontal passage.

**EXTENDED FORECAST:** The coolest day so far this fall on Tuesday behind the front with highs only around 70 degrees. Humidity values will slowly fall to around 30-40% with Northerly winds 5-15 mph. **A moderate to briefly strong North wind event** sets up Tuesday night with gusts 35-40 mph possible late Tuesday night into Wednesday morning as humidity values lower to around 30 percent. Look for a modest warming and dryin~ +end Weds-Thurs with highs in the lower 80s and lows upper 50s.



## FIRE BEHAVIOR FORECAST

<b>FORECAST NUMBER:</b> 3	<b>TYPE OF FIRE:</b> Wildland
<b>FIRE NAME:</b> Fawn	<b>OPERATIONAL PERIOD:</b> 9/27-9/28, 0700-0700
<b>DATE ISSUED:</b> 9/26/2021	<b>TIME ISSUED:</b> 1700
<b>UNIT:</b> CA-SHU-010480	<b>SIGNED:</b> 
<b>Typed/printed:</b> Jonathan Pangburn, FBAN	

### INPUTS

**WEATHER SUMMARY:** COLD FRONT PASSAGE. CHANCE FOR SHOWERS OVERNIGHT

Temp: 77 max; 46 min  
 RH: 40% min; 90% max  
 Wind: SW 10, gust 20 day; W/NW 10 gust 25 night

### OUTPUTS

#### FIRE BEHAVIOR

##### GENERAL:

Fuels & fire behavior advisory in effect. Dead fuel accumulation from winter storm damage & mortality. ERC above 90<sup>th</sup> percentile; BI average for this time of year. Live & dead fuel moistures at critical. 100- & 1,000-hr dead fuels below 10<sup>th</sup> percentile.

In the absence of weather conditions outside the forecast or extreme fire behavior conditions expect:

	Max. Flame Length	Max. Rate of Spread	Spotting	Probability of Ignition
Grass	<5' (1.5 m)	35-40 ft/min (0.6-0.7 km/hr)	< 0.3 mile (0.5 km)	40%
Shrub	10-15' (3-4.5 m)	40-45 ft/min (0.7-0.8 km/hr)	< 0.3 mile (0.5 km)	40%
Timber Litter	< 5' (1.5 m)	5 ft/min (0.1 km/hr)	< 0.3 mile (0.5 km)	40%
Timber Understory	5-10' (1.5-3 m)	5-10 ft/min (0.1-0.2 km/hr)	< 0.3 mile (0.5 km)	40%

**\*\*minimum safety zone size for grass fuels is 1/4 acre (0.1 Ha) for a Strike Team of Engines.**

**\*\*minimum safety zone size for timber fuels is 1/3 acre (0.1 Ha) for a Strike Team of Engines.**

**\*\*minimum safety zone size for shrub fuels is 1/2 acre (0.2 Ha) for a Strike Team of Engines.**

##### SPECIFIC:

Branch I: No fire growth anticipated.

DIV M/T: Around sundown, wind shift will be abrupt from SW to W to NW. This will test the line. Any remaining heat could produce ember cast toward Jones Valley and Clikapudi Creek.

DIV U / W: Passage of cold front will test fire line around Bear Mtn Rd.

##### AIR OPERATIONS:

Clear.

Mixing height: 5,000 ft. AGL. Transport winds: SW 15-20 becoming NW 20 overnight. Sunrise 0701, Sunset 1859.

### SAFETY

Cold front passages indicate critical fire weather. Don't underestimate rapid wind shift and increase in speed.  
 Fire weakened trees + cold front winds = WATCH OUT!

# Fuels and Fire Behavior Advisory

## Northern California

September 16, 2021, to September 30, 2021



**Subject:** Potential for extreme fire behavior due to continued critically low live and dead fuel moistures. Very dry conditions resulting from persistent drought, minimal snowpack and spring precipitation, periods of excessive heat have caused elevated to record fire danger rating values across much of northern California. Anticipated moisture could temporarily reduce some threat across the far north PSAs.

**Discussion:** Fires burning in northern California continue to exhibit extreme fire growth due to critical fuel conditions. Rapid fire spread can be fuels driven. Wind events have led to extreme rates of spread. Surface fuels are very receptive to embers. Long range spotting, area ignition, and group torching is occurring on large fires frequently.

**Difference from normal conditions:** Extreme to Exceptional levels of drought conditions continue to exist across much of Northern California. The drought is expected to persist or intensify through the rest of fire season. Deficient rainfall and snowpack with early melt off, coupled with periods of extreme heat has resulted in fuels that are critically dry, with record setting conditions for most areas.

### Concerns to Firefighters and the Public:

- Energy Release Component (ERC) at numerous weather stations set record maximums already this year. Recent scattered rain has reduced some ERC values, but fuels are rebounding quickly. Extreme fire behavior has been observed in all fuel types and both live and dead fuels. **Continue to anticipate increased spread rates, spotting, and active nighttime burning.**
- The combination of extreme levels of persistent drought and record-low rainfall and snowpack amounts has led to very low live and dead fuel moistures. 1000-hour fuel moistures continue to trend at record low levels in many areas. Live fuel moistures in grasses, shrubs, and trees, remain at critical levels in many areas of Northern California due to limited green-up this spring. **Expect fires to ignite easier, spread faster and burn hotter. Reports of blistered paint on vehicles have been surprisingly frequent so far this year. Do not expect fires to exhibit reduced fire behavior when entering areas of live fuels; anticipate increased spread rates and spotting.**
- Direct attack is often not feasible under regular diurnal wind conditions with ground resources. Aviation utilization is often insufficient in moderating rate of spread without immediate heavy ground resource response. **Anticipate higher resistance to control in all fuel types.**
- Northern California continues to experience large fire activity and multiple team deployments and will likely experience an extended fire season. It is important to be mindful of and manage fatigue for all resources. **Everyone, every day, returns home safely.**
- The frequency of North to Northeast offshore wind events increases from mid-September into the fall. These strong winds are often accompanied by very low RHs and will pose an increased hazard when combined with this year's critically dry fuels conditions. **Watch for change.**

### Mitigation Measures:

- Local and inbound fire personnel need to be aware that fire behavior across the state is exceeding normal expectations for this time of the year. **Local briefings need to be thorough and highlight specific fire environment conditions. These include but are not limited to local weather forecasts, PocketCards, ERC's, live and dead fuel moistures.**
- Suppression actions need to be based on good anchor points, escape routes, and safety zones. **Remember LCES. Experienced lookouts are essential under these conditions.**
- Base all actions on current and expected behavior of the fire. **Augment initial attack resources as incident activity dictates.**

**Area of Concern:** Northern California except for the following Predictive Service Areas: North Coast and Bay Marine, west of Highway 101 in Mid-Coast to Me\_5\_icino and Diablo-Santa Cruz, and the northeastern portion of Far Eastside.



# ASSIGNMENT LIST (ICS 204 WF)

CONTROLLED UNCLASSIFIED  
INFORMATION//BASIC

<b>1. Incident Name:</b> <p style="text-align: center; font-size: 1.2em;">FAWN</p>		<b>2. Operational Period:</b> Date From: 09/27/21      Date To: 09/28/21 Time From: 0700              Time To: 0700			<b>3. Branch</b> <p style="text-align: center; font-size: 1.5em;">I</p>		<b>Division</b> <p style="text-align: center; font-size: 1.5em;">A/B</p>	
<b>4. Operations Personnel:</b>				Page 1 of 2		Bravo		
Operations Section Chief: <b>Shane Lauderdale, Brian Gibilisco (T)</b>			Night Ops: <b>Monty Smith</b>					
Branch Director: <b>Tim Perkins, Nick Ciapponi (T)</b>			Branch Safety: <b>Keith Harston</b>					
Division/Group Supervisor: <b>Jason Collins, <del>Scott Irvine (T)</del></b>			Air Attack: <b>Eric Hill</b>					
<b>5. Resources Assigned:</b>		<b>** Resources Below in Bold are 12 Hour **</b>						
Resource Identifier	ALS	LWD	Leader	Personnel	Request #	Hours	Reporting Location	
STC BTU 9210C			PURVIS, PATRICK	16	E-40	0700-0700	Radcliff Road	
STC TGU 9250C			TROEHLER, MATT	16	E-25	0700-0700	Radcliff Road	
STC XYU 3300C			GARDNER, BOBBY	19	E-86	0700-0700	Radcliff Road	
STC XSD 6440C	X		MOLLOY, BERNIE	19	E-109	0700-0700	Radcliff Road	
STC OES 6849C → DIV Y	X		CHARPENTIER, THOMAS	21	E-114	0700-0700	Radcliff Road	
STG BTU 9212G (CCC)			FINKENKELLER, KEVIN		C-20	0700-0700	Radcliff Road	
STG LMU 9220G (CDCR)			BONNER, CHRISTOPHER		C-7	0700-0700	Radcliff Road	
STG TGU 9254G (CDCR)			SHEFFIELD, BRENNEN		C-38	0700-0700	Radcliff Road	
STG SHU <del>FAWN</del> (CDCR) 9145 6			FAULKNER, JOSH	28	<del>C-63</del>	0700-0700	Radcliff Road	
DOZ PVT E-45 - SCHREDER			HALL, GARY		E-45	0700-0700	Radcliff Road	
DOZ PVT E-47 - SCHNETZER					E-47	0700-0700	Radcliff Road	
DOZ PVT E-65 - PRODUMP			NORTON, TRACY		E-65	0700-0700	Radcliff Road	
<del>W/T XSH-50-</del>			<del>ALLEN, JOHN</del>		<del>E-107-</del>	0700-1900	Radcliff Road	
W/T PVT E-29 - AMERICAN			OILAR, NORMAN		E-29	0700-1900	Radcliff Road	
W/T PVT E-31 - 40 TRAFFIC			FOOT, BRANDON		E-31	0700-1900	Radcliff Road	
W/T PVT E-51 - T & S DVBE			GOETTING, MELL		E-51	0700-0700	Radcliff Road	
W/T PVT E-116 - FIVE STAR			FROST, STEVE		E-116	0700-1900	Radcliff Road	
W/T PVT E-118 - LUNTEY'S			LUNTEY, KEVIN		E-118	0700-0700	Radcliff Road	
<b>6. Work Assignments:</b> Fall hazard trees, and trees that threaten control lines. Mop up 300' from control lines. Hold and improve control lines. Pull Hose Lays where appropriate. Backhaul Excess Trash/Hose/Water.								
<b>7. Special Instructions:</b>								
<b>8. Communications</b>								
Name	Ch	Function	Rx Freq	Rx Tone	Tx Freq	Tx Tone	Notes	
SHA CMD T1	1	COMMAND	154.4300	136.5 (T4)	159.0150	110.9 (T1)	Hatchet Mtn	
CDF T23	4	TACTICAL	159.4500	192.8 (T16)	159.4500	192.8 (T16)	Branch I	
CDF T25	14	AIR TO GROUND	159.2775	192.8 (T16)	159.2775	192.8 (T16)	Air to Ground	
CALCORD	15	MEDICAL	156.0750	156.7 (T6)	156.0750	156.7 (T6)	Medical	
GUARD	16	AIRGUARD	168.6250	None	168.6250	110.9 (T1)	EMERGENCY	
<b>9. Prepared by: Name:</b>		Gwyndolyn Ozard		RESL		Signature:		
<b>ICS 204</b>		Date/Time: 9/26/2021 2200		Personnel Count: 119				







# ASSIGNMENT LIST (ICS 204 WF)

CONTROLLED UNCLASSIFIED  
INFORMATION//BASIC

<b>1. Incident Name:</b> <p style="text-align: center; font-size: 1.2em;">FAWN</p>	<b>2. Operational Period:</b> Date From: 09/27/21      Date To: 09/28/21 Time From: 0700              Time To: 0700	<b>3. Branch</b> <b>Division</b> <p style="text-align: center; font-size: 1.5em;">V                                  M/T</p>
---------------------------------------------------------------------------------------	---------------------------------------------------------------------------------------------------------------------------	---------------------------------------------------------------------------------------------------------------------------------

<b>4. Operations Personnel:</b>		Page 1 of 2	Tango
Operations Section Chief: <b>Shane Lauderdale, Brian Giblisco (T)</b>	Night Ops: <b>Monty Smith</b>		
Branch Director: <b>Jake Keown, Dusty Gyves (T)</b>	Branch Safety: <b>Ken Margiott, Dean Gilardi</b>		
Division/Group Supervisor: <b>Clint Swenson, Niko Matteoli (T)</b>	Air Attack: <b>Eric Hill</b>		

5. Resources Assigned:		** Resources Below in Bold are 12 Hour **					
Resource Identifier	ALS	LWD	Leader	Personnel	Request #	Hours	Reporting Location
STC MEU 9110C			LEONARD, ALEX	18 +/-	E-42	0700-0700	DP 10
STC BTU 9211C			BOSTON, GUS	18	E-85	0700-0700	DP 10
STC SHU 9241C			BOIC, DENNIS	18	E-184	0700-0700	DP 10
STC SHU 9242C			STENGER, DANIEL	18	E-185	0700-0700	DP 10
STC TGU 9251C			PRIVETT, DONNIE	17	E-84	0700-0700	DP 10
STG 9252G TGU (CDCR)			WELCH, ANTHONY	33 +/-	C-9	0700-0700	DP 10
STG SKU 9264G (CDCR)			PINDELL, SETH	33	C-10	0700-0700	DP 10
STG AEU 9275G (DJJ)			MARTENSEN, CODY	36	C-22	0700-0700	DP 10
DOZ PVT E-46 - SALINAS				2	E-46	0700-0700	DP 10
DOZ PVT E-71 - HARD LOGN.				2	E-71	0700-0700	DP 10
DOZ PVT E-81 - MCGOWAN			EPPERSON, JERRY	2	E-81	0700-0700	DP 10
DOZ PVT E-137 - DAVID J				2	E-137	0700-0700	DP 10
DOZ PVT E-140 - HARD LOGN				2	E-140	0700-0700	DP 10
DOZ PVT E-253 - COPPER			KUEHN, RICHARD	2	E-253	0700-0700	DP 10
W/T PVT E-53 - CONVERSE			SLCHEPPS, STEVE	2	E-53	0700-0700	DP 10
W/T PVT E-64 - WETTER				2	E-64	0700-0700	DP 10
W/T PVT E-88 - WARREN				2	E-88	0700-0700	DP 10
W/T PVT E-121 - HARRIS			MILLER, JACK	2	E-121	0700-0700	DP 10

**6. Work Assignments:**  
Mop up 300' from control lines.  
Hold and improve control lines.  
Pull Hose Lays where appropriate.  
Backhaul Excess Trash/Hose/Water.

**7. Special Instructions:**

8. Communications							
Name	Ch	Function	Rx Freq	Rx Tone	Tx Freq	Tx Tone	Notes
SHA CMD T1	1	COMMAND	154.4300	136.5 (T4)	159.0150	110.9 (T1)	Hatchet Mtn
CDF T30	7	TACTICAL	151.3925	192.8 (T16)	151.3925	192.8 (T16)	Branch V
CDF T25	14	AIR TO GROUND	159.2775	192.8 (T16)	159.2775	192.8 (T16)	Air to Ground
CALCORD	15	MEDICAL	156.0750	156.7 (T6)	156.0750	156.7 (T6)	Medical
GUARD	16	AIRGUARD	168.6250	None	168.6250	110.9 (T1)	EMERGENCY

**9. Prepared by: Name:** Gwyndolyn Ozard                      RESL  
Signature:   
**ICS 204**                      Date/Time: 9/26/2021 2200                      Personnel Count: 211











# ASSIGNMENT LIST (ICS 204 WF)

CONTROLLED UNCLASSIFIED  
INFORMATION/BASIC

<b>1. Incident Name:</b> <p style="text-align: center; font-weight: bold;">FAWN</p>	<b>2. Operational Period:</b> Date From: 09/27/21    Date To: 09/28/21 Time From: 0700    Time To: 0700	<b>3. Branch</b> <b>Division</b> <p style="text-align: center; font-weight: bold;">CONT.    Jones Cont. Group</p>
<b>4. Operations Personnel:</b>		Page 1 of 1

Operations Section Chief: <b>Shane Lauderdale, Brian Giblisco (T)</b>	Night Ops: <b>Monty Smith</b>
Branch Director: <b>Shane Galvez (12 Hr)</b>	Branch Safety:
Division/Group Supervisor:	Air Attack: <b>Eric Hill</b>

5. Resources Assigned:		** Resources Below in Bold are 12 Hour **					
Resource Identifier	ALS	LWD	Leader	Personnel	Request #	Hours	Reporting Location
<del>STC OES 2870C</del>			<del>GONTRERAS, GARRETT</del>	<del>48 +/-</del>	<del>E-111</del>	0700-1900	DP 10
STG MEU 9115G (CDCR)			HADRICH, KEVIN	31	C-37	0700-1900	DP 10
<del>ORW1 G-5 SUGAR PINE 2</del>				<del>46 +/-</del>	<del>G-5</del>	0700-1900	DP 10
DOZ PVT E-138 - KERCHER				1	E-138	0700-1900	DP 10
DOZ PVT E-143 - SCHROFF				1	E-143	0700-1900	DP 10
DOZ PVT E-256 - LA RUE			LOULL, MATT	1	E-256	0700-1900	DP 10
DOZ PVT E-257 - O'FERRALL			GARY, LOUIS	1	E-257	0700-1900	DP 10
EXC PVT <del>E-311</del> - 2C LAND <b>E-289</b>			ROBERTSON, JUSTIN	2	<del>E-311</del> <b>289</b>	0700-1900	DP 10
EXC PVT E-323 - KRISMAN'S				2	E-323	0700-1900	DP 10
MAS PVT E-288 - HILL			HILL, STEVEN	1	E-288	0700-1900	DP 10
CHIP PVT E-339 - ACA			BAKER, JEFF	2	E-339	0700-1900	DP 10
CHIP PVT E-340 - BUNDYS			GARRETT, JUSTIN	2	E-340	0700-1900	DP 10
<del>HEQB GIAPPONI</del>			<del>GIAPPONI, BRIAN</del>	<del>4</del>	<del>G-48</del>	0700-1900	DP 10
<b>HEQB</b>							

**6. Work Assignments:**  
Scout and construct contingency line.

**7. Special Instructions:**

**8. Communications**

Name	Ch	Function	Rx Freq	Rx Tone	Tx Freq	Tx Tone	Notes
SHA CMD T1	1	COMMAND	154.4300	136.5 (T4)	159.0150	110.9 (T1)	Hatchet Mtn
CDF T28	5	TACTICAL	151.1825	192.8 (T16)	151.1825	192.8 (T16)	Contingency Branch
CDF T25	14	AIR TO GROUND	159.2775	192.8 (T16)	159.2775	192.8 (T16)	Air to Ground
CALCORD	15	MEDICAL	156.0750	156.7 (T6)	156.0750	156.7 (T6)	Medical
GUARD	16	AIRGUARD	168.6250	None	168.6250	110.9 (T1)	EMERGENCY

**9. Prepared by: Name:** Gwyndolyn Ozard    **RESL**

**Signature:**    **Personnel Count:** 79

**ICS 204**    **Date/Time:** 9/26/2021 2200













# SAFETY MESSAGE

## FAWN INCIDENT

CA\_SHU\_010480

September 27, 2021 0700-0700



S  
A  
F  
E  
T  
Y

S  
A  
F  
E  
T  
Y

S  
A  
F  
E  
T  
Y

E  
V  
E  
R  
Y  
O  
N  
E  
S

R  
E  
S  
P  
O  
N  
S  
I  
B  
I  
L  
I  
T  
Y

### DRIVING

#### INCREASE IN TRAFFIC WITH NARROW WINDING ROADS

##### Watch Out – Increase in traffic

- Emergency vehicles engaged in suppression and mop up
- Multiple agencies in and amongst the fire repairing and evaluating infrastructure
- Narrow roads with steep drop offs in areas

##### Mitigation – Brief all resources

- Utilize lights, cones, or other warning devices
- Have a traffic plan for narrow one lane roads and communicate the plan
- **SLOW DOWN!!!** Drive respectfully

### UNDERSTANDING THE PLAN

#### MULTIPLE AGENCIES WORKING IN COORDINATION

##### Watch Out

- Operational briefing not being passed down to lowest level
- Objectives not clear
- Lack of participation at briefings

##### Mitigations

- Leaders have the responsibility to provide complete briefings and ensure that subordinates have a clear understanding of their intent
- All personnel who have not received a briefing shall notify their direct supervisor prior to engaging
- Supervisors will ensure briefings are attended

### OPERATE WITHIN YOUR LIMITS

#### WORK / REST QUALIFICATIONS

##### Watch Out

- **Mop up** can include roll out, snags, and uneven footing. Watch for ash pits and stump holes
- **Hot weather** can lead to dehydration, heat illness, serious medical emergencies
- **Working beyond capabilities** can lead to a failure to identify risks

##### Mitigation

- Stay alert, preplan actions, communicate, and have a look out. Identify and flag ash pits
- Proper nutrition, rest and hydration reduces fatigue and exhaustion emergencies
- Know your qualification level and be honest about capabilities

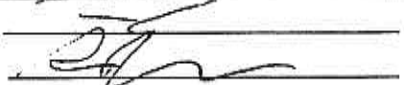

**SAFETY IS EVERYONES RESPONSIBILITY**

Todd Horton



# INCIDENT ACTION PLAN SAFETY ANALYSIS (ICS 215A)




<b>1. Incident Name:</b> FAWN		<b>2. Incident Number:</b> 21-CA-SHU-010480	
<b>3. Date/Time Prepared:</b> Date: 09/26/2021 Time: 1700 hours		<b>4. Operational Period:</b> Date From: 09/27/2021 To: 09/28/2021 Time From: 0700 hours To: 0700 hours	
<b>5. Incident Area</b>	<b>6. Hazards/Risks</b>	<b>7. Mitigations</b>	
DIV. A, B, T, U, W	Driving	Plan ahead. Slow down and expect increased traffic. Lights on and drive with respect.	
DIV. A, B, T, U, W	Hazardous Trees	IRPG Pg 22: Identify and Flag Hazardous Trees. Eliminate hazardous trees with qualified sawyers or heavy equipment.	
DIV. A, B, T, U, W	Dehydration / Rhabdomyolysis	With the long operational shifts and low humidity's, maintain your crews' water and caloric intake regimen.	
DIV. A, B, T, U, W	Changing Weather	Northerly Winds are predicted to reverse and become Southerly... Be Aware and Prepare for the weather transition.	
DIV. B, T, U	Helicopters - Water Drops and Turbulence	Post lookouts and make escape routes and safety zones known. LCES. Watch overhead for hazard trees and wind changes.	
DIV. B, T, U	Steep, unstable terrain	Watch footing and maintain downhill tool placement. Be aware of loose material. Look for ash pits and stump holes.	
DIV. A, B, T, U, W	Unburned areas	LCES - utilize worst case scenario when working in or around pockets of unburned fuels.	
DIV. A, B, T, U, W	Working around heavy equipment	Maintain eye-to-eye contact with the operator. Have fire suppression support when operating in dry fuels	
DIV. A, B, T, U, W	Personal Protective Equipment (PPE)	Wear appropriate PPE for all operations until your supervisor indicates it's safe to remove.	
DIV. A, B, T, U, W	Highway 5 Old Oregon Trail and Bear Mountain Road: CAL TRANS and Utilities working along the roadway	Drive slow through the construction areas. Expect delays along all travel routes.	
ALL areas of the incident including the ICP and Hotels	COVID-19: Reduce exposure potential to yourself, your crew and the public	Maintain 6' of social distance. Wash hands frequently and for at least 20 seconds. Wear a mask when appropriate.	
DIV. A, B, T, U, W	Powerlines /Compromised Power Poles and Utility Workers	LOOK UP and LOOK DOWN... Communicate utility hazards, and flag those to prevent injury of other crews.	
Ground Support	Personnel and vehicles moving around one another in tight areas	Chock wheels. Use spotters and backers. Follow mechanic direction.	
<b>8. Prepared by (Safety Officer):</b> Name: Douglas M Ferro		Signature: 	
<b>Prepared by (Deputy Operations Section Chief):</b> Name: Shawn Raley		Signature: 	
ICS 215A		Date/Time: 09.26.2021 1700 Hours	



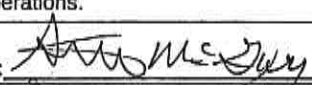
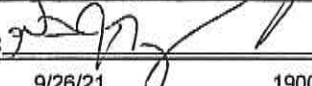


# ICS 205 - INCIDENT RADIO COMMUNICATIONS PLAN

CONTROLLED UNCLASSIFIED  
INFORMATION//BASIC

<b>1. Incident Name:</b> FAWN Incident Channels		<b>2. Date/Time Prepared</b> Date: 09/26/2021 Time: 1930		<b>3. Operational Period:</b> Date From: 09/27/21 Time From: 0700 Date To: 09/28/21 Time To: 0700				
<b>4. Communications</b>								
Ch#	Function	Name	Assigned To	Rx Freq	Rx Tone	Tx Freq	Tx Tone	Notes
1	COMMAND	SHA CMD T1	ALL DIVS	154.4300	136.5 (T4)	159.0150	110.9 (T1)	Hatchet Mtn
2	COMMAND	SHA CMD T2	ALL DIVS	154.4300	136.5 (T4)	159.0150	123.0 (T2)	Bass Mtn
3								
4	TACTICAL	CDF T23	DIV A/B	159.4500	192.8 (T16)	159.4500	192.8 (T16)	Branch I
5	TACTICAL	CDF T28	Jones Cont.	151.1825	192.8 (T16)	151.1825	192.8 (T16)	Contingency Branch
6	TACTICAL	CDF T29	DIV Y	151.3475	192.8 (T16)	151.3475	192.8 (T16)	Branch I
7	TACTICAL	CDF T30	DIV M/T	151.3925	192.8 (T16)	151.3925	192.8 (T16)	Branch V
8	TACTICAL	CDF T31	UNASSIGNED	159.3825	192.8 (T16)	159.3825	192.8 (T16)	UNASSIGNED
9	TACTICAL	VTAC11	DIV U	151.1375	156.7 (T6)	151.1375	156.7 (T6)	Branch V
10	TACTICAL	VTAC12	DIV W	154.4525	156.7 (T6)	154.4525	156.7 (T6)	Branch V
11	TACTICAL	VTAC13	Supp Repair	158.7375	156.7 (T6)	158.7375	156.7 (T6)	FSR Branch
12								
13								
14	AIR TO GROUND	CDF T25	ALL DIVS	159.2775	192.8 (T16)	159.2775	192.8 (T16)	Air to Ground
15	MEDICAL	CALCORD	ALL DIVS	156.0750	156.7 (T6)	156.0750	156.7 (T6)	Medical
16	AIRGUARD	GUARD	ALL DIVS	168.6250	None	168.6250	110.9 (T1)	EMERGENCY
17								
18								
19								
20	AIRGUARD	GUARD	ALL DIVS	168.6250	None	168.6250	110.9 (T1)	EMERGENCY
<b>5. Special Instructions</b>								
***The current clone for 9/27/21 is FAWN2 which is the name of the clone group, FAWN communications 24/7 phone number is 916-883-0934***								
<b>6. Prepared by (Communications Unit Leader):</b> Name: Mike Heyfron			Signature: 					
ICS 205 - CONTROLLED UNCLASSIFIED INFORMATION//BASIC			Date/Time: 09/26/21 1930					

## MEDICAL PLAN (ICS 206)

<b>1. Incident Name:</b> <p style="text-align: center;">FAWN</p>		<b>2. Operational Period:</b> Date From: 9/27/21 Date To: 9/28/21 Time From: 0700 Time To: 0700					
<b>3. Medical Aid Stations:</b>							
Name	Location	Contact Number/Freq	Paramedics				
CALMAT	BASE CAMP	916-605-6287	MD				
MERT	BASE CAMP	916-753-4001	PA				
<b>4. Transportation (Indicate air or ground):</b>							
Ambulance Service	Location	Contact Number	Level of Service				
AMR, DIGNITY (GROUND)	SHASTA COUNTY	FAWN COMMS	ALS				
PHI AIR MED (AIR)	REDDING	FAWN COMMS	RN				
CHP 14 & 16 (DAY HOIST)	REDDING	FAWN COMMS	ALS				
GUARD 841 (24 HOUR HOIST)	REDDING	FAWN COMMS	ALS				
<b>5. Hospitals:</b>							
Hospital Name	Address,	Contact Number(s)/ Frequency	Travel Time		Trauma Center	Burn Center	Helipad
	Lat & Long Helipad		Air	Ground			
Shasta Regional Medical Center Redding	1100 Butte St, N 40°35.100', W 122°23.280'	(530)244-5400 468.025 Tx, 468.025 Rx	5 MIN	15 MIN	Level 3	<input type="checkbox"/>	<input checked="" type="checkbox"/>
Mercy Medical Center Redding	2175 Rosaline Ave, N 40°34.330', W 122°23.800	(530)225-7201 468.075 Tx 463.000 Rx	5 MIN	15 MIN	Level 2	<input type="checkbox"/>	<input checked="" type="checkbox"/>
UC Davis Medical Center Sacramento	2315 Stockton Blvd, N 38°33.380', W 121°27.350'	(916)734-3790 446.525 Tx, 203.500 Rx	1 HOUR	3.5 HOURS	Level 1	<input checked="" type="checkbox"/>	<input checked="" type="checkbox"/>
<b>6. Special Medical Emergency Procedures</b>							
<b>Line Emergency</b> Crew Supervisor will contact Division Supervisor with patient complaint/condition and location. - Division Group Supervisor Contacts: 1. Closest EMS resource 2. Communications Unit - Communications Unit Contacts: 1. Ground or Air ambulance as requested. 2. Operations 3. Safety 4. Medical Unit - Division Supervisor or designee will serve as point of contact and run medical emergency on assigned channel. 1. A pre-assigned tactical frequency (i.e. CALCORD) should be used for IWI and only for duration of the emergency. - Communications Unit will clear the Command channel for emergency traffic as needed for duration of the need.  <b>Camp Emergency</b> Contact Medical Unit with patient complaint/condition and location. Medical staff will respond to stabilize the patient. - Medical Unit contacts 1. Communications 2. Safety 3. Logistics 4. Operations 5. Crew Supervisor 6. Comp/Claims				<b>Injury Reporting Procedures</b>  Nature of Injury: _____ Location of Patient: _____ Point of Contact: _____ Transportation Requested by: Air _____ Ground _____ Point of Pick-Up: _____ Lat: _____ Long: _____ Patient Unit ID: _____ Is an EMT with Patient: Yes _____ No _____ Age: _____ Sex: Male _____ Female _____  All Emergencies - Secure the area and identified witnesses for later investigation. Keep accurate log of events.  <p style="text-align: center;">*****IN CAMP EMERGENICES***** 916-883-0934</p>			
<input type="checkbox"/> Check box if aviation assets are utilized for rescue. If assets are used, coordinate with Air Operations.							
<b>7. Prepared by (Medical Unit Leader):</b>				<b>Signature:</b>			
Steve McGary							
<b>8. Approved by (Safety Officer):</b>				<b>Signature:</b>			
Doug Ferro, Jack Piccini, Bill Murphy (T)							
ICS 206	NIMS IAP	Date/Time:	9/26/21	1900			







## **FAWN FIRE** **INFORMATION SHEET**

Fire Information Line: **(530)448-2466**

Please scan the QR Below for CAL FIRE's Social Media Policy 0691.



### **INCIDENT MAIL**

The PIO Trailer will receive mail/packages shipped to the Incident. Please ensure all mail addressed to the incident follows the format below:

**(YOUR NAME, YOUR ORDER NUMBER)  
C/O FAWN FIRE BASE CAMP  
PUBLIC INFORMATION TRAILER  
SHASTA DISTRICT FAIRGROUNDS  
1890 BRIGGS ST, ANDERSON, CA 96007**

### **LOST AND FOUND**

Any items that are found, please bring them to the PIO Trailer located at the entrance to Base Camp and leave them with PIO staff. Please leave your name and contact information and description of lost items so we can attempt to reunite you with your items.

# **TRAINING MESSAGE**

## **“ATTENTION”**

**TRAINEES, IF YOU KNOW THAT YOU ARE BEING DEMOBED, PLEASE SEE TRAINING TO CLOSE OUT YOUR PAPERWORK PRIOR TO DEMOB**

### **TRAINEES – For close out**

- **Bring in your completed task book**
- **Bring your completed task book evaluation record**
- **Bring your completed ICS 225**







CAL-FIRE INCIDENT MANAGEMENT TEAM 4



24HR LINE RESOURCE - 2 OPERATOR

EMERGENCY SHIFT TICKET and EVALUATION FORM  
The responsible Government Officer will complete this form each shift.

Contractor Name: THE BEST DOZERS LLC  
Operator #1: FIRST & LAST  
Operator #2: FIRST & LAST

Incident or Project Name: MISSION  
Request Number: E-444

Agreement Number: MMU-0000015953

Equipment Make: 1999 PETERBILT 379  
Equipment Model / Type: TRANSPORT 18 WHEEL  
License Number: 12345A1

Operator Furnished By:  Contractor  Government

Operating Supplies Furnished By:  Contractor  Government

Equipment Status:  Inspected  Under Agreement

Released by Government:   
Withdrawn by Contractor:

Remarks/Comments:

Date Mo / Day	Start	Stop	Work	Days / Miles
9/5	0701	2400	17	DIV X
9/6	0001	0700	7	DIV X

Vendor Rating: Poor\* Avg. Good Exc. N/A

Met Performance Expectations:   
Equipment in Safe Working Condition:   
Operator Skill Level:   
Operates Safely:   
Operator's Cooperation Level:   
Overall Performance:

VENDOR RATING MUST BE DONE

Govt. Rep. Name and Position - PRINT:   
Print Your Name:   
Govt. Rep. Signature:   
Contractor Signature:   
Date: 9/6/20 Time: 0700

\* NOTE: any rating of POOR requires an explanation in Comment Section.  
\*\* Final evaluation or for more documentation, use a CALFIRE Form 230 or equivalent.

24HR / 12HR TRANSITION SHIFT TICKET

EMERGENCY SHIFT TICKET and EVALUATION FORM  
The responsible Government Officer will complete this form each shift.

Contractor Name: THE BEST DOZERS LLC  
Operator #1: FIRST & LAST  
Operator #2: FIRST & LAST

Incident or Project Name: MISSION  
Request Number: E-444

Agreement Number: MMU-0000015953

Equipment Make: 1999 PETERBILT 379  
Equipment Model / Type: TRANSPORT 18 WHEEL  
License Number: 12345A1

Operator Furnished By:  Contractor  Government

Operating Supplies Furnished By:  Contractor  Government

Equipment Status:  Inspected  Under Agreement

Released by Government:   
Withdrawn by Contractor:

Remarks/Comments:

Date Mo / Day	Start	Stop	Work	Days / Miles
9/6	0701	1900	12	DIV X
9/6	1901	2400	5	OFF SHIFT

Vendor Rating: Poor\* Avg. Good Exc. N/A

Met Performance Expectations:   
Equipment in Safe Working Condition:   
Operator Skill Level:   
Operates Safely:   
Operator's Cooperation Level:   
Overall Performance:

VENDOR RATING MUST BE DONE

Govt. Rep. Name and Position - PRINT:   
Print Your Name:   
Govt. Rep. Signature:   
Contractor Signature:   
Date: 9/6/20 Time: 1900

\* NOTE: any rating of POOR requires an explanation in Comment Section.  
\*\* Final evaluation or for more documentation, use a CALFIRE Form 230 or equivalent.

12HR LINE RESOURCE - 1 OPERATOR

EMERGENCY SHIFT TICKET and EVALUATION FORM  
The responsible Government Officer will complete this form each shift.

Contractor Name: THE BEST DOZERS LLC  
Operator #1: FIRST & LAST  
Operator #2: FIRST & LAST

Incident or Project Name: MISSION  
Request Number: E-555

Agreement Number: MMU-0000015955

Equipment Make: 2004 CAT  
Equipment Model / Type: D6N / TYPE II E  
License Number: COMPLETE VIN#

Operator Furnished By:  Contractor  Government

Operating Supplies Furnished By:  Contractor  Government

Equipment Status:  Inspected  Under Agreement

Released by Government:   
Withdrawn by Contractor:

Remarks/Comments:

Date Mo / Day	Start	Stop	Work	Days / Miles
9/7	0001	0700	7	OFF SHIFT
9/7	0701	1900	12	DIV X
9/7	1901	2400	5	OFF SHIFT

Vendor Rating: Poor\* Avg. Good Exc. N/A

Met Performance Expectations:   
Equipment in Safe Working Condition:   
Operator Skill Level:   
Operates Safely:   
Operator's Cooperation Level:   
Overall Performance:

VENDOR RATING MUST BE DONE

Govt. Rep. Name and Position - PRINT:   
Print Your Name:   
Govt. Rep. Signature:   
Contractor Signature:   
Date: 9/7/20 Time: 1900

\* NOTE: any rating of POOR requires an explanation in Comment Section.  
\*\* Final evaluation or for more documentation, use a CALFIRE Form 230 or equivalent.

24HR IN CAMP RESOURCE

EMERGENCY SHIFT TICKET and EVALUATION FORM  
The responsible Government Officer will complete this form each shift.

Contractor Name: THE BEST CAMP LLC  
Operator #1: FIRST & LAST  
Operator #2: -

Incident or Project Name: MISSION  
Request Number: E-333

Agreement Number: MMU-0000015950

Equipment Make: TENT  
Equipment Model / Type: 20 X 30  
License Number: -

Operator Furnished By:  Contractor  Government

Operating Supplies Furnished By:  Contractor  Government

Equipment Status:  Inspected  Under Agreement

Released by Government:   
Withdrawn by Contractor:

Remarks/Comments: 4 x 600 SUFT

Date Mo / Day	Start	Stop	Work	Days / Miles
9/2	0001	2400	24	ICP

Vendor Rating: Poor\* Avg. Good Exc. N/A

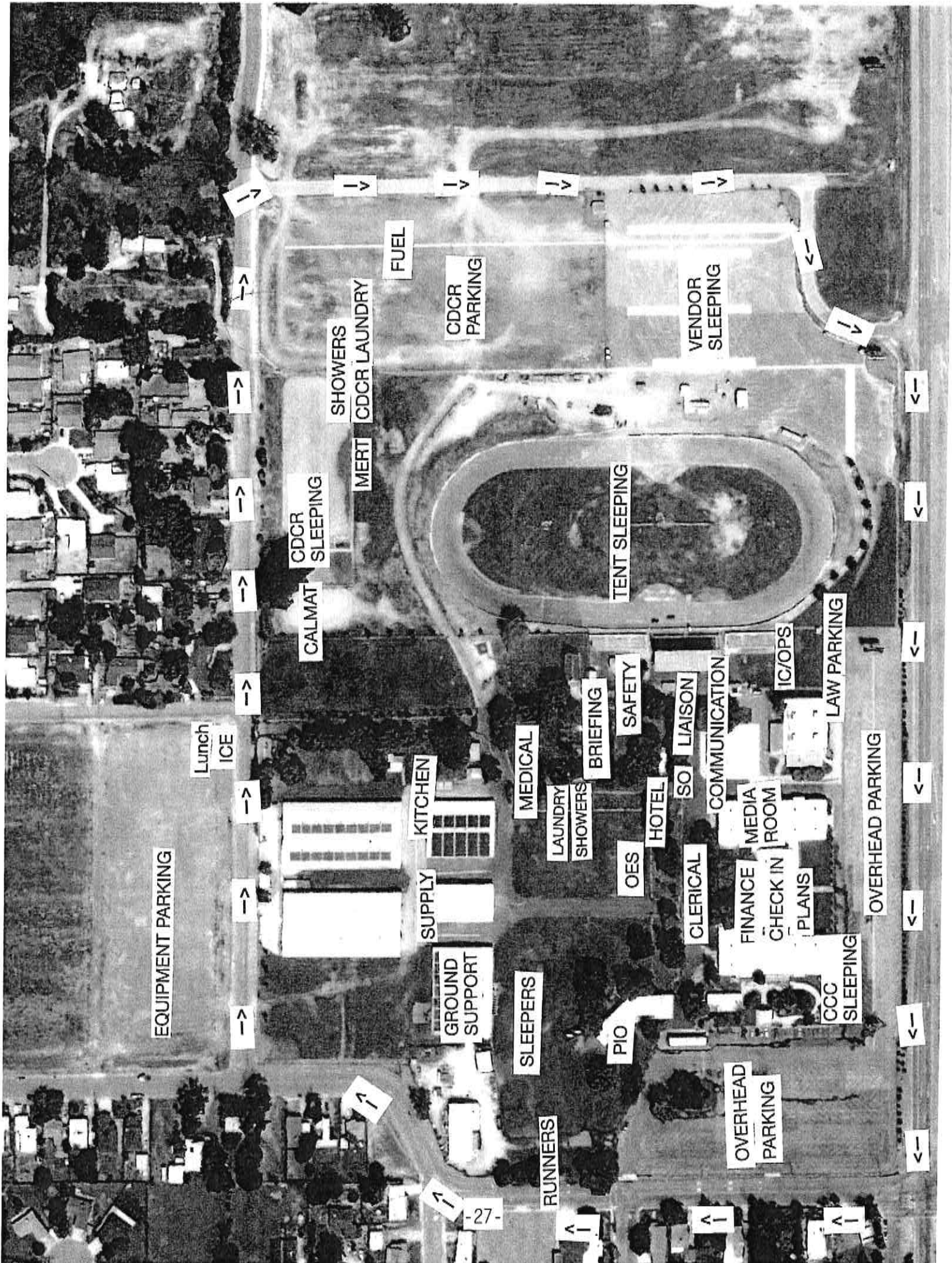
Met Performance Expectations:   
Equipment in Safe Working Condition:   
Operator Skill Level:   
Operates Safely:   
Operator's Cooperation Level:   
Overall Performance:

VENDOR RATING MUST BE DONE

Govt. Rep. Name and Position - PRINT:   
Print Your Name:   
Govt. Rep. Signature:   
Contractor Signature:   
Date: 9/2/20 Time: 1900

\* NOTE: any rating of POOR requires an explanation in Comment Section.  
\*\* Final evaluation or for more documentation, use a CALFIRE Form 230 or equivalent.

**THIS PAGE LEFT INTENTIONALLY BLANK**



EQUIPMENT PARKING

Lunch  
ICE

CALMAT  
CDCR SLEEPING

SHOWERS  
CDCR LAUNDRY

FUEL

CDCR PARKING

TENT SLEEPING

VENDOR SLEEPING

KITCHEN

SUPPLY

GROUND SUPPORT

MEDICAL

LAUNDRY  
SHOWERS

BRIEFING

SAFETY

HOTEL

SO LIAISON

COMMUNICATION

FINANCE  
MEDIA  
CHECK IN ROOM

PLANS

IC/OPS

LAW PARKING

OVERHEAD PARKING

CCC SLEEPING

CLERICAL

OES

PIO

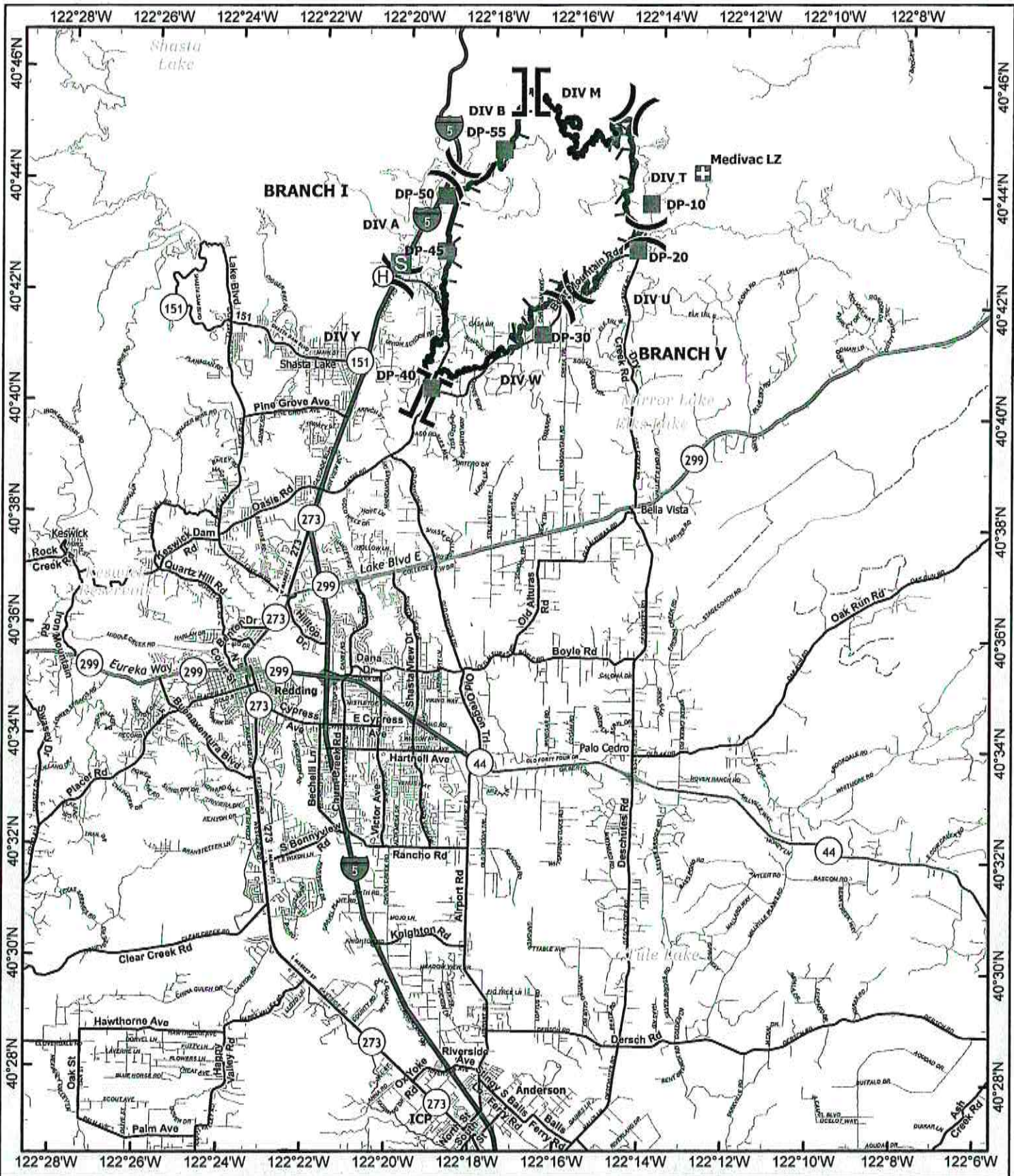
SLEEPERS

RUNNERS

OVERHEAD PARKING

-27-





- ⊕ Hellbase
- ⌘ Division Break
- ⌋ Branch Break
- ⊕ Medical
- ⊠ Incident Command Post
- Drop Point
- ⊠ Staging Area
- ⊗ Completed Dozer Line
- H - Completed Hand Line
- R - Completed Road as Line
- ▬ Fire Edge
- ▬ Contained Line

**TRAVEL MAP**  
**Fawn Incident**  
**CA-SHU-010480**





