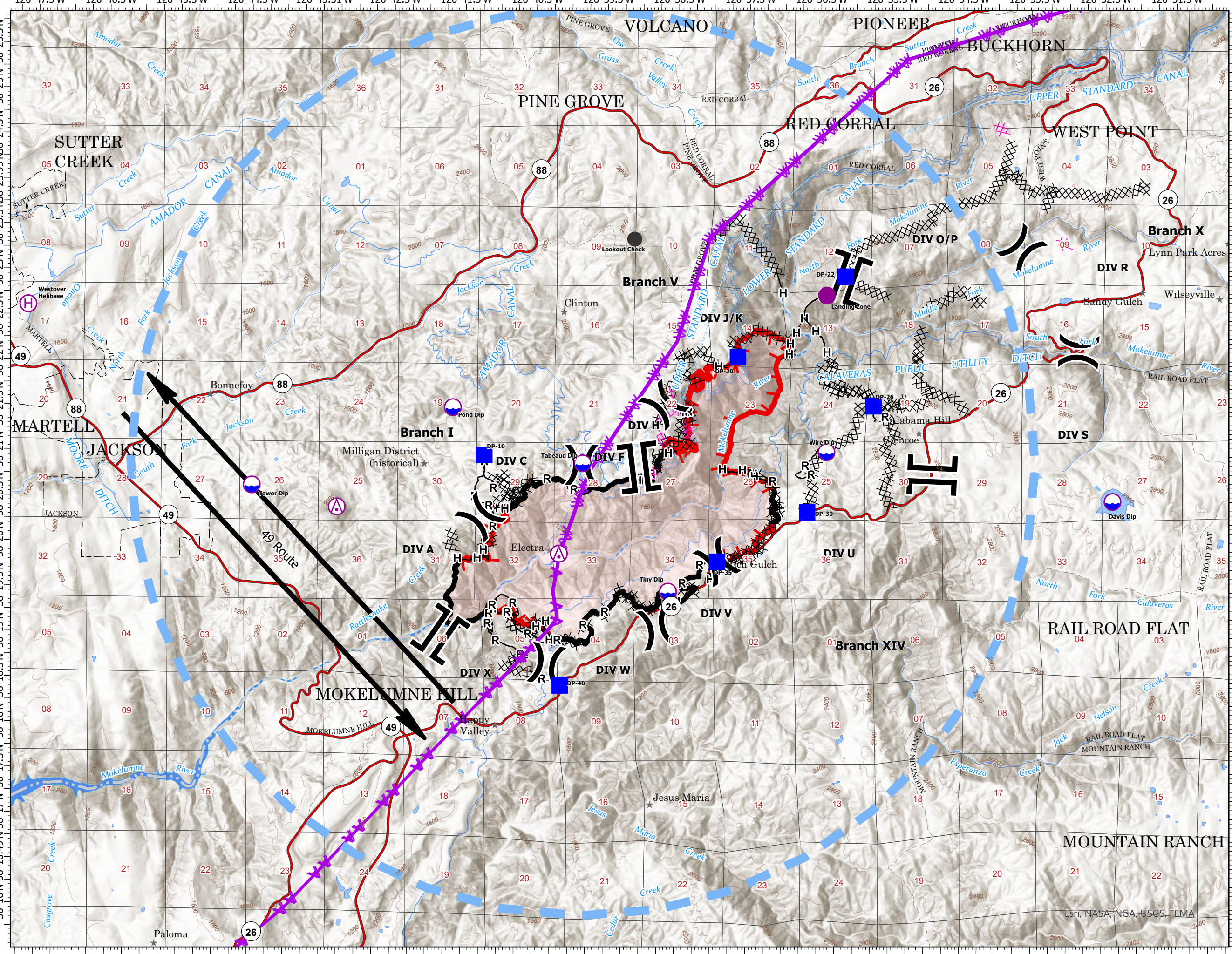
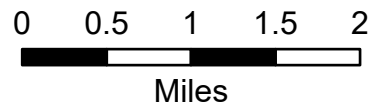


Pilot Map

Electra Incident
CA-AEU-017769
July 9, 2022

- TFR
- Aerial Hazard
- Dip Site
- Helispot
- Helibase
- Division Break
- Branch Break
- Drop Point
- Check
- Transmission Lines
- Completed Dozer Line
- Completed Hand Line
- Completed Road as Line
- Planned Dozer Line
- Contained
- Uncontained
- Wildfire Daily Fire Perimeter
- Air_Ops_Route



Esri, NASA, NGA, USGS, FEMA

Point	Latitude	Longitude
DP-40	38° 18.436' N	120° 40.121' W
DP-10	38° 20.977' N	120° 41.205' W
DP-20	38° 22.011' N	120° 37.802' W
DP-22	38° 22.970' N	120° 36.140' W
DP-26	38° 21.542' N	120° 35.739' W
DP-30	38° 20.364' N	120° 36.662' W
DP-35	38° 19.813' N	120° 37.924' W
Tower Dip	38° 20.630' N	120° 44.471' W
Tabaud Dip	38° 20.890' N	120° 39.821' W
Pond Dip	38° 21.500' N	120° 41.651' W
Wire Dip	38° 21.030' N	120° 36.396' W
Davis Dip	38° 20.500' N	120° 32.370' W
Tiny Dip	38° 19.480' N	120° 38.610' W
Westover Helibase	38° 22.610' N	120° 47.631' W
Landing Zone	38° 22.761' N	120° 36.401' W
Aerial Hazard	38° 20.395' N	120° 43.275' W
Aerial Hazard	38° 19.891' N	120° 40.146' W
Lookout Check	38° 23.370' N	120° 39.110' W