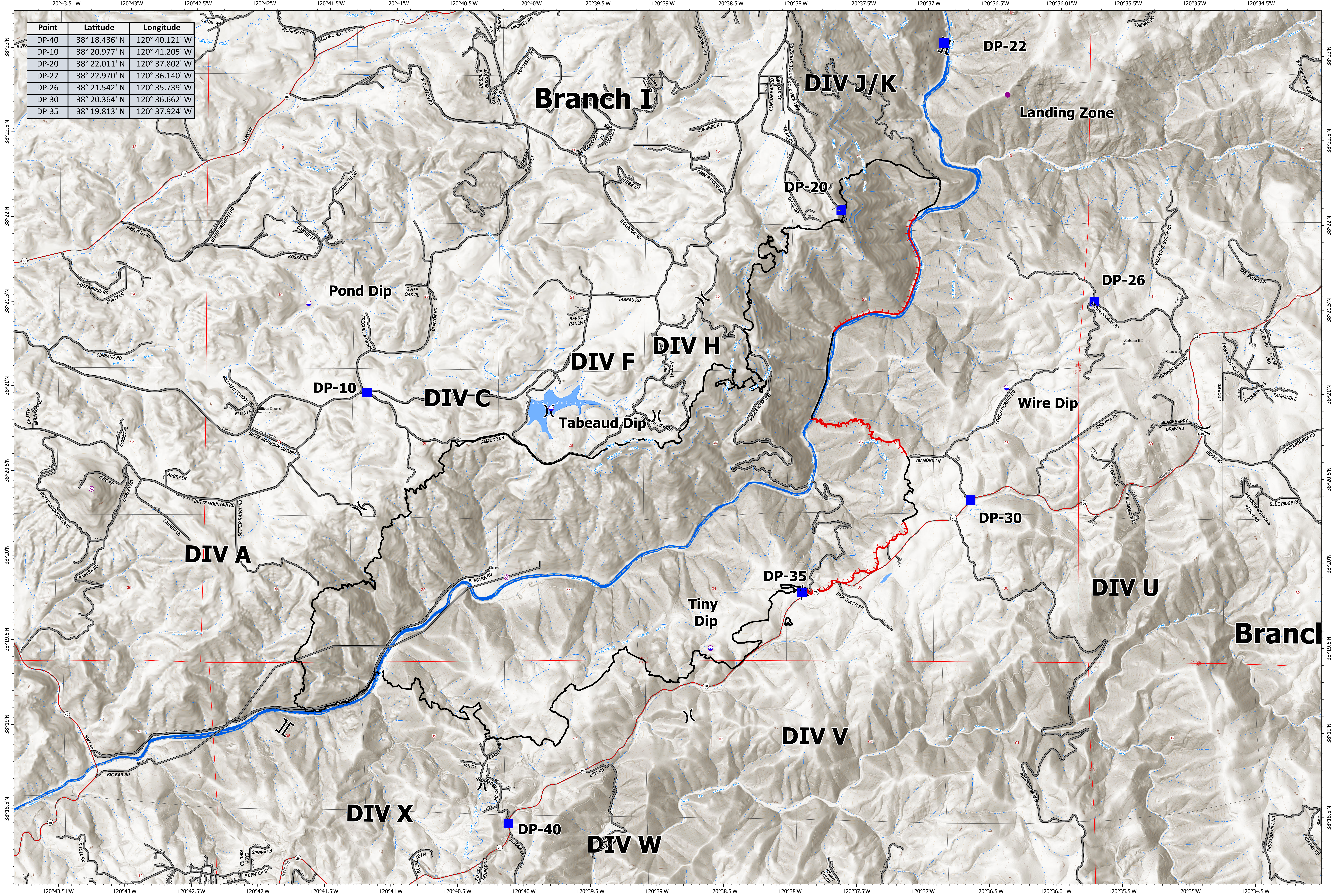


Point	Latitude	Longitude
DP-40	38° 18.436' N	120° 40.121' W
DP-10	38° 20.977' N	120° 41.205' W
DP-20	38° 22.011' N	120° 37.802' W
DP-22	38° 22.970' N	120° 36.140' W
DP-26	38° 21.542' N	120° 35.739' W
DP-30	38° 20.364' N	120° 36.662' W
DP-35	38° 19.813' N	120° 37.924' W



Transpo Ops
 Electra Incident
 CA-AEU-017769
 July 11, 2022

- Aerial Hazard
- Dip Site
- Wellhead
- Division Break
- Branch Break
- Drop Point
- Contained
- Uncontained



Transportation Ops Map
 Electra Incident
 CA-AEU-017769
 July 11, 2022



Transpo Ops
 Electra Incident
 CA-AEU-017769
 July 11, 2022