

# INCIDENT ACTION PLAN

## RICES

CA-NEU-017228



### OPERATIONAL PERIOD

6/29/2022      0700

to

6/30/2022      0700



# INCIDENT OBJECTIVES (ICS 202)

<b>1. Incident Name:</b> Rices	<b>2. Operational Period:</b>	Date From: 6/29/2022	Date To: 6/30/2022
		Time From: 0700	Time To: 0700

**3. Objective(s):**

**Management Objectives**

- Provide for safety of the public and first responders.
- Patrol evacuated properties to maintain security.
- Ensure coordinated, timely and accurate release of public information.
- Bring back normalcy to the affected communities.
- Foster and maintain relationships with all cooperators and stakeholders.

**Control Objectives**

- Keep fire North of Rices Crossing.
- Keep fire West of Pleasant Valley Road.
- Keep fire South of Sweetland Creek.
- Keep fire East of Yuba River.

**General Situational Awareness:**

Extreme heat, causing dehydration and heat illness including heat exhaustion and heat stroke.

Steep and rugged terrain, critically dry and receptive fuel beds, active area for fire history and drought stressed trees.

**5. Site Safety Plan Required?** Yes  No

**Approved Site Safety Plan(s) Located at:**

**6. Incident Action Plan**

<input checked="" type="checkbox"/> ICS 203	<input type="checkbox"/> ICS 215A	<input type="checkbox"/> Logistics Message	<input type="checkbox"/>
<input checked="" type="checkbox"/> ICS 204	<input type="checkbox"/> ICS 220	<input type="checkbox"/> Training Message	<input type="checkbox"/>
<input checked="" type="checkbox"/> ICS 205	<input type="checkbox"/> Facility Maps	<input type="checkbox"/> Travel Map	<input type="checkbox"/>
<input checked="" type="checkbox"/> ICS 206	<input checked="" type="checkbox"/> Weather Forecast	<input type="checkbox"/> Demob Plan	<input type="checkbox"/> County Health Message
<input checked="" type="checkbox"/> ICS 208	<input type="checkbox"/> Fire Behavior	<input type="checkbox"/> Finance Message	<input checked="" type="checkbox"/> ICS 214

<b>7. Prepared By:</b> D. Sooy	Position/Title: PSC	Signature: <u><i>D. Sooy</i></u>
<b>8. Approved by Incident Commander:</b>	Jim Mathias	Signature: _____

## ORGANIZATION ASSIGNMENT LIST (ICS 203)

<b>1. Incident Name:</b> Rices		<b>2. Operational Period: Date From:</b> 6/29/2022		<b>Date To:</b> 6/30/2022	
		<b>Time From:</b> 0700		<b>Time To:</b> 0700	
<b>3. Incident Commander(s) and Command Staff:</b>			<b>7. Operation Section:</b>		
IC/UC's	Jim Mathias, Cal Fire	Operations	B. Mackwood		
	Sam Brown, NCSO	Deputy Operations			
	Brandon Spear, YCSO	Night Ops	M. Wallen		
		Staging Area			
Deputy					
Safety Officer	Bryan McLean				
Information Officer	Mary Eldridge				
Liaison Officer	Daniel Bowers	<b>Branch</b>	<b>I</b>	<b>S. Griffins</b>	
<b>4. Agency/Organization Representatives:</b>		Division/Group	A	J. Smutz	
CAL FIRE	Brian Estes	Division/Group	H	G. Lane	
USFS	Jason Flores	Division/Group	M	P. Moffett	
		Division/Group			
		Division/Group			
		<b>Branch</b>	<b>V</b>	<b>J. Walton</b>	
		Division/Group	P	A. Watkins	
		Division/Group	R	K. Cunningham	
		Division/Group	X	C. Reginatto	
		Division/Group			
		Division/Group			
		<b>Branch</b>	<b>Contingency</b>	<b>M. RAE</b>	
		Division/Group	AA	R. Tucker	
		Division/Group	XX	T. Welch	
		Division/Group			
		Division/Group			
		Division/Group			
		<b>Branch</b>	<b>IV</b>		
		Division/Group			
<b>5. Planning Section:</b>		Division/Group			
Chief	Daniel Sooy	Division/Group			
Deputy		Division/Group			
Resource Unit		Division/Group			
Situation Unit	Dorus Van Goidsenhoven	<b>Branch</b>	<b>V</b>		
Documentation Unit		Division/Group			
Demobilization Unit		Division/Group			
GISS	Elsa Hucks	Division/Group			
FBAN		Division/Group			
IMET		Division/Group			
Training Tech Spec		<b>Air Operations Branch</b>		<b>Director:</b>	
		Air Support Group Supervisor			
		Air Tactical Group Supervisor		D. Krussow	
<b>6. Logistics Section</b>		Helibase Manager			
Chief	Matt Siebecke				
Supply Unit		<b>8. Finance/Administration Section:</b>			
Facilities Unit		Chief	Tiffany Tracy		
Ground Support Unit		Time Unit			
Communications Unit		Procurement Unit			
Medical Unit		Comp/Claims Unit			
		Cost Unit			
<b>Prepared By: Name:</b> D. Sooy		<b>Position/Title:</b> PSC		<b>Signature:</b> <i>Daniel Sooy</i>	
<b>ICS 203</b>		<b>Date/Time:</b> 6/28/2022 2300 hours		<small>NIMS IAP</small>	

# Law Enforcement (LE) Incident Command Form 203

## Organizational Assignment List

**1. Incident Name:** Rices Crossing **Op Period:** 2 **Date From:** 6/29/2022 **Date To:** 6/29/2022  
**Time From:** 7:00 **Time To:** 19:00

**3. LE Incident Commander(s) and Staff**

LE IC(s)	S. Brown
-	-
-	-
Search Manager	n/a
Safety Officer	n/a
Public Info. Officer	n/a
Liaison Officer	n/a

**7. Operations Section:**

LE Chief	J. Perry	
LE Deputy	M. Vingom	
LE Staging Area		
Branch		Deputy
Branch Dir.		
Div./Group		
Div./Group		
Div./Group	- / -	
Div./Group	- / -	
Div./Group	- / -	
Div./Group	- / -	
Branch		Deputy
Branch Dir.		
Div./Group		
Div./Group		
Div./Group		
Div./Group		
Div./Group		
Div./Group		
Div./Group		
Div./Group		
Branch		Deputy
Branch Dir.		
Div./Group		
Div./Group		
Air Operations Bra	Branch	Deputy
Branch Dir.		
Div./Group		
Div./Group		

**4. Agency/Organization Representatives:**

Agency	Name
-	-
-	-
-	-
-	-
-	-
-	-
-	-
-	-
-	-
-	-
-	-
-	-

**5. Planning Section:**

LE Chief	D. Haack
LE Deputy	-
LE Resources Unit	
LE Situation Unit	
LE Documentation Unit	

**6. Logistics Section:**

LE Chief	-
LE Logistics Section Chief	
Support Branch	
Director	
Supply Unit	
Facilities Unit	
Ground Unit	
Service Branch	
Director	n/a
Comm. Unit	n/a
Medical Unit	n/a
Food/Water Unit	n/a
Transportation	n/a
Transportation	n/a
Transportation	n/a

**8. Finance/Administration Section:**

Chief	n/a	
Deputy		
Time Unit		
Proc. Unit		
Comp/Claims Unit		
Cost Unit		

**9. Prepared by:** Chris Dyer  
ICS Form 203

Signature:   
Date/Time: 6/29/22

# ASSIGNMENT LIST (ICS 204 WF)

CONTROLLED UNCLASSIFIED  
INFORMATION//BASIC

<b>1. Incident Name:</b> <p style="text-align: center;"><b>Rices</b></p>	<b>2. Operational Period:</b> Date From: 06/29/22     Date To: 06/30/22 Time From: 0700             Time To: 0700	<b>3. Branch</b> <p style="text-align: center;"><b>I</b></p>	<b>Division</b> <p style="text-align: center;"><b>A</b></p>
---	---	---	--

<b>4. Operations Personnel:</b>		Page 1 of 1	Alpha
Operations Section Chief: <b>B. Mackwood</b>	Night Ops: <b>M. Wallen</b>		
Branch Director: <b>S. Griffins</b>	Branch Safety:		
Division/Group Supervisor: <b>J. Smutz</b>	Air Attack: <b>D. Krussow</b>		

<b>5. Resources Assigned:</b>							
Resource Identifier	ALS	LWD	Leader	Personnel	Request #	Hours	Reporting Location
B2312							
T2306							
P2322							
S2310							
STC 6168C							
ENG 2392							
ENG 6371							
CRW WAR 3							
CRW WAR 4							
CRW 576							
WT 43							
WT 6897							

**6. Work Assignments:**  
 Construct and hold line utilizing direct tactics and cold trail fingers & islands where necessary to prevent fire spread.  
 Perform Tactical Patrol around structures.  
 Structure defense and perimeter control

**7. Special Instructions:**

<b>8. Communications</b>							
Name	Ch	Function	Rx Freq	Rx Tone	Tx Freq	Tx Tone	Notes
CDF C2	1	COMMAND	151.4600	103.5 (T9)	159.3900	100.0 (T9)	
CDF Tac 29	2	TACTICAL	151.3475	192.8	151.3475	192.8	
CALCORD	3	MEDICAL	156.0750N	T6 - 156.7	156.0750N	T6 - 156.7	
CDF Tac 22	4	AIR TO GROUND	159.4050	192.8 (T16)	159.4050	192.8 (T16)	

**9. Prepared by: Name:**                      D.Sooy    RESL  
 Signature: *Dail Sooy*  
**ICS 204**    Date/Time: 6/28/2022    2200    Personnel Count: 0

# ASSIGNMENT LIST (ICS 204 WF)

CONTROLLED UNCLASSIFIED  
INFORMATION//BASIC

<b>1. Incident Name:</b> <p style="text-align: center; font-size: 1.2em;">Rices</p>	<b>2. Operational Period:</b> Date From: 06/29/22    Date To: 06/30/22 Time From: 0700    Time To: 0700	<b>3. Branch</b> <p style="text-align: center; font-size: 1.5em;">I</p>	<b>Division</b> <p style="text-align: center; font-size: 1.5em;">H</p>
--	---	--	---

<b>4. Operations Personnel:</b>		Page 1 of 1	Hotel
Operations Section Chief: <b>B. Mackwood</b>	Night Ops: <b>M. Wallen</b>		
Branch Director: <b>S. Griffins</b>	Branch Safety:		
Division/Group Supervisor: <b>G. Lane</b>	Air Attack: <b>D. Krussow</b>		

5. Resources Assigned:							
Resource Identifier	ALS	LWD	Leader	Personnel	Request #	Hours	Reporting Location
CRW Beckworth IHC							
CRW Feather River IHC							

**6. Work Assignments:**  
Continue line construction improvements.

**7. Special Instructions:**

8. Communications							
Name	Ch	Function	Rx Freq	Rx Tone	Tx Freq	Tx Tone	Notes
CDF C2	1	COMMAND	151.4600	103.5 (T9)	159.3900	103.5 (T9)	
VFIRE 24	2	TACTICAL	154.2725N	T6 - 156.7	154.2725N	T6 - 156.7	
CDF Tac 22	3	AIR TO GROUND	159.4050	192.8 (T16)	159.4050	192.8 (T16)	
CALCORD	4	MEDICAL	156.0750N	T6 - 156.7	156.0750N	T6 - 156.7	

<b>9. Prepared by: Name:</b>	D. Sooy	RESL	Signature: <u><i>David Sooy</i></u>
<b>ICS 204</b>	Date/Time: 6/28/2022 2200	Personnel Count:	0

# ASSIGNMENT LIST (ICS 204 WF)

CONTROLLED UNCLASSIFIED  
INFORMATION//BASIC

<b>1. Incident Name:</b>	<b>2. Operational Period:</b>	<b>3. Branch</b>	<b>Division</b>
<b>Rices</b>	Date From: 06/29/22      Date To: 06/30/22 Time From: 0700                Time To: 0700	<b>I</b>	<b>M</b>

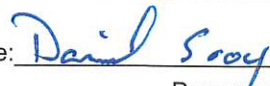
<b>4. Operations Personnel:</b>		<b>Page 1 of 1</b>	<b>MIKE</b>
Operations Section Chief: <b>B. Mackwood</b>		Night Ops: <b>M. Wallen</b>	
Branch Director: <b>S. Griffins</b>		Branch Safety:	
Division/Group Supervisor: <b>P. Moffett</b>		Air Attack: <b>D. Krussow</b>	

<b>5. Resources Assigned:</b>							
Resource Identifier	ALS	LWD	Leader	Personnel	Request #	Hours	Reporting Location
STC 6102C							
ENG 2374							
ENG 2352							
ENG 2357							
ENG 2396							
ENG 6182							
ENG 6886							
D2341							
D2346							
U2349							
CRW CNA 23							
CRW El Dorado IHC							
W/T 24							

**6. Work Assignments:**  
 Construct and hold line utilizing direct tactics and cold trail fingers & islands where necessary to prevent fire spread.  
 Perform Tactical Patrol around structures.  
 Structure defense and perimeter control

**7. Special Instructions:**

<b>8. Communications</b>							
Name	Ch	Function	Rx Freq	Rx Tone	Tx Freq	Tx Tone	Notes
CDF C2	1	COMMAND	151.4600	103.5 (T9)	159.3900	100.0 (T9)	
CDF Tac 29	2	TACTICAL	151.3475	192.8	151.3475	192.8	
CDF Tac 22	3	AIR TO GROUND	159.4050	192.8 (T16)	159.4050	192.8 (T16)	
CALCORD	4	MEDICAL	156.0750N	T6 - 156.7	156.0750N	T6 - 156.7	

<b>9. Prepared by: Name:</b>		D.Sooy	RESL	Signature: 
<b>ICS 204</b>	Date/Time: 6/28/2022	2200	Personnel Count: 0	





# ASSIGNMENT LIST (ICS 204 WF)

CONTROLLED UNCLASSIFIED  
INFORMATION//BASIC

<b>1. Incident Name:</b>	<b>2. Operational Period:</b>	<b>3. Branch</b>	<b>Division</b>
Rices	Date From: 06/29/22 Time From: 0700	Date To: 06/30/22 Time To: 0700	V  R

<b>4. Operations Personnel:</b>	Page 1 of 1	Romeo
Operations Section Chief: <b>B. Mackwood</b>	Night Ops: <b>M. Wallen</b>	
Branch Director: <b>J. Walton</b>	Branch Safety:	
Division/Group Supervisor: <b>K. Cunningham</b>	Air Attack: <b>D. Krussow</b>	

5. Resources Assigned:	Resource Identifier	ALS	LWD	Leader	Personnel	Request #	Hours	Reporting Location
	STC 9261C							
	ENG 2353							
	ENG 2363							
	ENG 2386							
	ENG 330							
	ENG 332							
	ENG 335							
	BR44							
	W/T 6191							
	W/T 84							
	DOZ LESTER							
	CRW PLC 2							

**6. Work Assignments:**  
Construct and hold line utilizing direct tactics and cold trail fingers & islands where necessary to prevent fire spread.  
Perform Tactical Patrol around structures.  
Structure defense and perimeter control

**7. Special Instructions:**

8. Communications	Name	Ch	Function	Rx Freq	Rx Tone	Tx Freq	Tx Tone	Notes
	CDF C2	1	COMMAND	151.4600	103.5 (T9)	159.3900	100.0 (T9)	
	CDF Tac 30	2	TACTICAL	151.3925	192.8	151.3925	192.8	
	CDF Tac 22	3	AIR TO GROUND	159.4050	192.8 (T16)	159.4050	192.8 (T16)	
	CALCORD	4	MEDICAL	156.0750N	T6 - 156.7	156.0750N	T6 - 156.7	

<b>9. Prepared by: Name:</b>	D.Sooy	RESL	Signature: <u>David Sooy</u>	Personnel Count: 0
ICS 204	Date/Time: 6/28/2022	2200		

# ASSIGNMENT LIST (ICS 204 WF)

CONTROLLED UNCLASSIFIED  
INFORMATION//BASIC

<b>1. Incident Name:</b> <div style="text-align: center;">Rices</div>	<b>2. Operational Period:</b> Date From: 06/29/22    Date To: 06/30/22 Time From: 0700    Time To: 0700	<b>3. Branch</b> <div style="text-align: center;">V</div>	<b>Division</b> <div style="text-align: center;">X</div>
<b>4. Operations Personnel:</b>		Page 1 of 1	X-ray

Operations Section Chief: <b>B. Mackwood</b>	Night Ops: <b>M. Wallen</b>
Branch Director: <b>J. Walton</b>	Branch Safety:
Division/Group Supervisor: <b>C. Reginatto</b>	Air Attack: <b>D. Krussow</b>

5. Resources Assigned:							
Resource Identifier	ALS	LWD	Leader	Personnel	Request #	Hours	Reporting Location
STC 9241C							
ENG 239							
ENG 2352							
ENG 2362							
ENG 2372							
ENG 2384							
ENG 331							
BR6572							
S/T 9275G							
D2342							
U2398							

**6. Work Assignments:**  
 Construct and hold line utilizing direct tactics and cold trail fingers & islands where necessary to prevent fire spread.  
 Perform Tactical Patrol around structures.  
 Structure defense and perimeter control

**7. Special Instructions:**

8. Communications							
Name	Ch	Function	Rx Freq	Rx Tone	Tx Freq	Tx Tone	Notes
CDF C2	1	COMMAND	151.4600	103.5 (T9)	159.3900	100.0 (T9)	
CDF Tac 31	2	TACTICAL	159.3825	192.8	159.3825	192.8	
CDF Tac 22	3	AIR TO GROUND	159.4050	192.8 (T16)	159.4050	192.8 (T16)	
CALCORD	4	MEDICAL	156.0750N	T6 - 156.7	156.0750N	T6 - 156.7	

<b>9. Prepared by: Name:</b>	D.Sooy	RESL	Signature: <i>David Sooy</i>
<b>ICS 204</b>	Date/Time: 6/28/2022	2200	Personnel Count: 0

# ASSIGNMENT LIST (ICS 204 WF)

CONTROLLED UNCLASSIFIED INFORMATION/BASIC

<b>1. Incident Name:</b> <b>Rices</b>	<b>2. Operational Period:</b> Date From: 06/29/22    Date To: 06/30/22 Time From: 0700    Time To: 0700	<b>3. Branch</b> <b>Contgency</b>	<b>Division</b> <b>AA</b>
--	---	--------------------------------------	------------------------------

<b>4. Operations Personnel:</b>	<b>Page 1 of 1</b>	<b>Alpha-Alpha</b>
Operations Section Chief: <b>B. Mackwood</b>	Night Ops: <b>M. Wallen</b>	
Branch Director: <b>M. Rae</b>	Branch Safety:	
Division/Group Supervisor: <b>R. Tucker</b>	Air Attack: <b>D. Krussow</b>	

<b>5. Resources Assigned:</b>							
Resource Identifier	ALS	LWD	Leader	Personnel	Request #	Hours	Reporting Location
DOZ							
DOZ							
DOZ							

**6. Work Assignments:**  
Construct and hold line utilizing direct tactics and col trail fingers & islands where necessary to prevent fire spread.  
Assess need for contingency lines.

**7. Special Instructions:**


<b>8. Communications</b>							
Name	Ch	Function	Rx Freq	Rx Tone	Tx Freq	Tx Tone	Notes
CDF C2	1	COMMAND	151.4600	103.5 (T9)	159.3900	103.5 (T9)	
CDF Tac 31	2	TACTICAL	159.3825	192.8	159.3825	192.8	
CDF Tac 22	3	AIR TO GROUND	159.4050	192.8 (T16)	159.4050	192.8 (T16)	
CALCORD	4	MEDICAL	156.0750N	T6 - 156.7	156.0750N	T6 - 156.7	

**9. Prepared by: Name:** D. Sooy    RESL    Signature: David Sooy

**ICS 204**    Date/Time: 6/28/2022 2200    Personnel Count: 0

# ASSIGNMENT LIST (ICS 204 WF)

CONTROLLED UNCLASSIFIED  
INFORMATION//BASIC

<b>1. Incident Name:</b>			<b>2. Operational Period:</b>				<b>3. Branch</b>	<b>Division</b>
<b>Rices</b>			Date From: 06/29/22	Date To: 06/30/22			<b>XX</b>	
			Time From: 0700	Time To: 0700				<b>Contgency</b>
<b>4. Operations Personnel:</b>						<b>Page 1 of 1</b>	<b>X-ray-X-ray</b>	
Operations Section Chief: <b>B. Mackwood</b>			Night Ops: <b>M. Wallen</b>					
Branch Director: <b>M. Rae</b>			Branch Safety:					
Division/Group Supervisor: <b>T. Welch</b>			Air Attack: <b>D. Krussow</b>					
<b>5. Resources Assigned:</b>								
Resource Identifier	ALS	LWD	Leader	Personnel	Request #	Hours	Reporting Location	
DOZ								
DOZ								
DOZ								
<b>6. Work Assignments:</b>								
Construct and hold line utilizing direct tactics and col trail fingers & islands where necessary to prevent fire spread.								
Assess need for contingency lines.								
<b>7. Special Instructions:</b>								
<b>8. Communications</b>								
Name	Ch	Function	Rx Freq	Rx Tone	Tx Freq	Tx Tone	Notes	
CDF C2	1	COMMAND	151.4600	103.5 (T9)	159.3900	103.5 (T9)		
CDF Tac 31	2	TACTICAL	159.3825	192.8	159.3825	192.8		
CDF Tac 22	3	AIR TO GROUND	159.4050	192.8 (T16)	159.4050	192.8 (T16)		
CALCORD	4	MEDICAL	156.0750N	T6 - 156.7	156.0750N	T6 - 156.7		
<b>9. Prepared by: Name:</b>								
D.Sooy				RESL				
						Signature: 		
<b>ICS 204</b>		Date/Time: 6/28/2022 2200			Personnel Count: 0			

**Law Enforcement Incident Command Form 204**  
**Assignment List**

1. Incident Name: Rices Crossing	2. Op Period:	Date From: 6/29/2022 Date To: 6/29/2022
		2 Time From: 7:00 Time To: 19:00

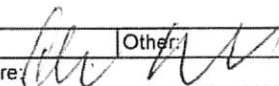
3. Assignment Identifier:		4. Operations Personnel:	
Branch		Section Chief	
Group		Branch Director	
Unit		Group Supervisor	
Staging Area			

5. Resources Assigned:				
Resource Identifier	Leader	# of Persons	Contact numbers (i.e., phone, radio frequency, etc.)	Reporting remarks, notes, and other information

6. Work Assignments:
Security Patrol. Update Occupancy status and structure status and any call for service within their area.

7. Special Instructions:

8. Communications (radio and/or phone numbers needed for this assignment):			
Name	Function	Cell Number	Radio (Frequency/ System/Channel)
NCSO TAC 1	Primary		
NCSO Banner	Secondary		
NCSO Oregon	Secondary		

9. Emergency Communications:			
Medical:	Evacuation:	Other:	
10. Prepared by: Chris Dyer		Signature: 	
ICS Form 204		Date/Time: June 28, 2022 19:30	

SPOT FORECAST for Rices Incident...CAL FIRE  
National Weather Service SACRAMENTO CA

.DISCUSSION...

A weak trough along the west coast will help to start a cooling trend on Wednesday with very dry daytime conditions expected to continue and poor overnight recovery. Winds will be diurnal easterly at night and early morning shifting southwest by late morning each day.

.WEDNESDAY...

Sky/weather.....Sunny.  
Max temperature.....88-94.  
Min humidity.....9-14 percent.  
Wind (20 ft).....  
Slope/valley.....East winds 3 to 7 mph shifting to the  
southwest 5 to 8 mph after 9 to 10 am.  
Ridgetop.....South around 10 mph.  
Mixing height.....400-1500 ft AGL increasing to 3300-5000 ft AGL  
late in the morning.  
Transport winds.....South around 10 mph.  
CWR.....0 percent.  
LAL.....1.

.WEDNESDAY NIGHT...

Sky/weather.....Clear.  
Min temperature.....63-68.  
Max humidity.....30-35 percent.  
Wind (20 ft).....  
Slope/valley.....South winds up to 7 mph shifting to the east  
around midnight.  
Ridgetop.....Southeast around 6 mph.  
Mixing height.....4300 ft AGL decreasing to 300-700 ft AGL early  
in the evening.  
Transport winds.....Southeast around 6 mph.  
CWR.....0 percent.  
LAL.....1.

.THURSDAY...

Sky/weather.....Sunny.  
Max temperature.....84-91.  
Min humidity.....12-17 percent.  
Wind (20 ft).....  
Slope/valley.....South winds up to 8 mph.  
Ridgetop.....South around 8 mph.  
Mixing height.....400-800 ft AGL increasing to 5000-5500 ft AGL.  
Transport winds.....South around 8 mph.  
CWR.....0 percent.  
LAL.....1.

# ICS 205 - INCIDENT RADIO COMMUNICATIONS PLAN

<b>1. Incident Name:</b> Rices Incident Channels		<b>2. Date/Time Prepared</b> Date: 06/28/2022 Time: 0100		<b>3. Operational Period:</b> Date To: 06/30/22 Time To: 0700				
<b>4. Communications</b>								
Ch#	Function	Name	Assigned To	Rx Freq	Rx Tone	Tx Freq	Tx Tone	Notes
1	COMMAND	CDF C2	ALL DIVS	151.2650	103.5 (T9)	159.3300	100.0(T9)	
2	A/G TACTICAL	CDF Tac 22	ALL DIVS	159.3675	192.8 (T16)	159.3675	192.8 (T16)	
3	TACTICAL	CDF Tac 29	DIV A/M	151.3475	192.8	151.3475	192.8	
4	TACTICAL	CDF Tac 30	DIV R/P	151.3925	192.8	151.3925	192.8	
5	TACTICAL	CDF Tac 31	DIV X/Contingency	159.3825	192.8	159.3825	192.8	
6	MEDICAL	CALCORD	ALL DIVS	156.0750N	156.7 (6)	156.0750N	156.7 (T6)	
7								
8								
9								
10								
11								
12								
13								
14								
15								
16								
17								
18								
19								
20								
<b>5. Special Instructions</b>								
<b>6. Prepared by (Communications Unit Leader): Name:</b>								
				Signature: _____				
ICS 205 - CONTROLLED UNCLASSIFIED INFORMATION//BASIC				Date/Time: 06/28/22 0100				





# Law Enforcement Incident Command Form 205



## Incident Radio Communications Plan

1. Incident Name: Rices Crossing      2. Date/Time Prepared: 6/28/2022 14:20      3. Op Period: 2      Date From: 6/29/2022      Date To: 6/29/2022  
Time From: 7:00      Time To: 19:00

4. Basic Radio Channel Use.      **INSTRUCTIONS: Select from dropdown for Assignment and Channel Name. All other columns autofill w/ correct data**

Assignment <i>(choose from dropdown)</i>	Channel Name/ Radio Group <i>(choose from dropdown)</i>	Zone Group for NCSSAR radios <i>(data autofills)</i>	Channel # for NCSSAR Radios <i>(data autofills)</i>	RX Freq <i>(data autofills)</i>	RX Tone/ NAC/Dec <i>(data autofills)</i>	TX Freq <i>(data autofills)</i>	TX Tone/ NAC/Enc <i>(data autofills)</i>	Narrow/ Wide Band <i>(data autofills)</i>	Mode A, D, M <i>(data autofills)</i>
Primary	NCSO TAC	* NC *	20	155.1000	229.10	155.1000	229.10	N	A
Back Up	NCSO BANNER	* NC *	24	155.5650	141.30	154.8300	192.80	N	A
Back Up	NCSO OREGON	* NC *	22	155.5650	141.30	154.8300	162.20	N	A

Begin manual entry below if needed

ICP Phone Contact:      Shout Nano      CNG can provide messaging training

5. Special Instructions:  
Check out SAR Radios if your current radio is not programmed from these channels

Logistics Section Chief      n/a

Signature:      Date/Time:

## MEDICAL PLAN (ICS 206)

<b>1. Incident Name:</b> <p style="text-align: center; margin: 0;"><b>WILLOW</b></p>	<b>2. Operational Period:</b> Date From: <u>6/29/22</u> Date To: <u>6/30/22</u> Time From: <u>0700</u> Time To: <u>0700</u>
---	--

3. Medical Aid Stations:			
Name	Location	Contact Number/Freq	Paramedics
BLS Resources	Various Locations on Incident		

4. Transportation (indicate air or ground):			
Ambulance Service	Location	Contact Number	Level of Service
Sierra Nevada Ambulance	155 Glasson Way, Grass Valley, CA	530-274-6001	ALS
American Medical Response	1041 Fee Dr. Sacramento, CA	800-913-9112	ALS

5. Hospitals:							
Hospital Name	Address,	Contact Number(s)/ Frequency	Travel Time		Trauma Center	Burn Center	Helipad
	Lat & Long		Air	Ground			
Sierra Nevada Memorial	155 Glasson Way, Grass Valley, CA	916-781-100	10 Min	30min		<input type="checkbox"/>	<input checked="" type="checkbox"/>
UC Davis Medical Center	2315 Stockton Blvd, Sacramento, CA 95817	916-734-2011	30 Min	1 Hr		<input checked="" type="checkbox"/>	<input checked="" type="checkbox"/>
						<input type="checkbox"/>	<input type="checkbox"/>
						<input type="checkbox"/>	<input type="checkbox"/>
						<input type="checkbox"/>	<input type="checkbox"/>

### 6. Special Medical Emergency Procedures

**Line Emergency**  
 Crew Supervisor will contact Division Supervisor with patient complaint/condition and location.  
 - Division Group Supervisor Contacts:  
 1. Closest EMS resource  
 2. Communications Unit  
 - Communications Unit Contacts:  
 1. Ground or Air ambulance as requested.  
 2. Operations  
 3. Safety  
 4. Medical Unit  
 - Division Supervisor or designee will serve as point of contact and run medical emergency on assigned channel.  
 1. A pre-assigned tactical frequency (i.e. CALCORD) should be used for IWI and only for duration of the emergency.  
 - Communications Unit will clear the Command channel for emergency traffic as needed for duration of the need.

**Camp Emergency**  
 Contact Medical Unit with patient complaint/condition and location. Medical staff will respond to stabilize the patient.  
 - Medical Unit contacts  
 1. Communications  
 2. Safety  
 3. Logistics  
 4. Operations  
 5. Crew Supervisor  
 6. Comp/Claims

**Injury Reporting Procedures**  
 Nature of Injury: \_\_\_\_\_  
 Location of Patient: \_\_\_\_\_  
 Point of Contact: \_\_\_\_\_  
 Transportation Requested by: Air \_\_\_ Ground \_\_\_  
 Point of Pick-Up: \_\_\_\_\_  
 Lat: \_\_\_\_\_ Long: \_\_\_\_\_  
 Patient Unit ID: \_\_\_\_\_  
 Is an EMT with Patient: Yes \_\_\_ No \_\_\_  
 Age: \_\_\_\_\_ Sex: Male \_\_\_ Female \_\_\_

**All Emergencies - Secure the area and identified witnesses for later investigation. Keep accurate log of events.**

Check box if aviation assets are utilized for rescue. If assets are used, coordinate with Air Operations.

**7. Prepared by (PSC): Daniel Sooy** Signature: *Daniel Sooy*

**8. Approved by (Safety Officer):** Signature: \_\_\_\_\_  
Bryan McLean

### SAFETY MESSAGE/PLAN (ICS 208)

<b>1. Incident Name:</b> Rices	<b>2. Operational Period:</b>	Date From: 6/29/22 Time From: 0700	Date To: 6/30/22 Time To: 0700
-----------------------------------	-------------------------------	---------------------------------------	-----------------------------------

S  
A  
F  
E  
T  
Y  
  
S  
A  
F  
E  
T  
Y  
  
S  
A  
F  
E  
T  
Y

Steep winding roads are throughout the incident. Slow down when driving on loose gravel and blind curves. Drive defensively with headlights on and use hands free devices.

Working on steep, uneven terrain. Be mindful of rolling materials.

Ensure radios are properly programmed for today's IAP and that crews are trained in communications procedures for the incident.

Maintain situational awareness. Look up, Look down, Look around

Stay hydrated!!! Time to think = time to drink. Document rest and hydration on 214.

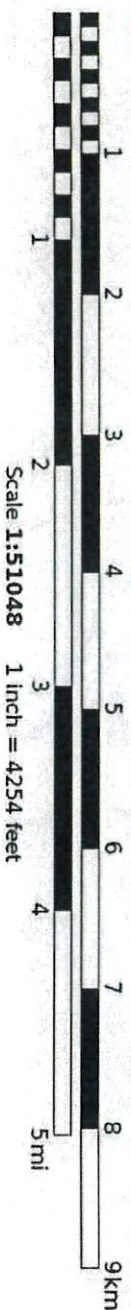
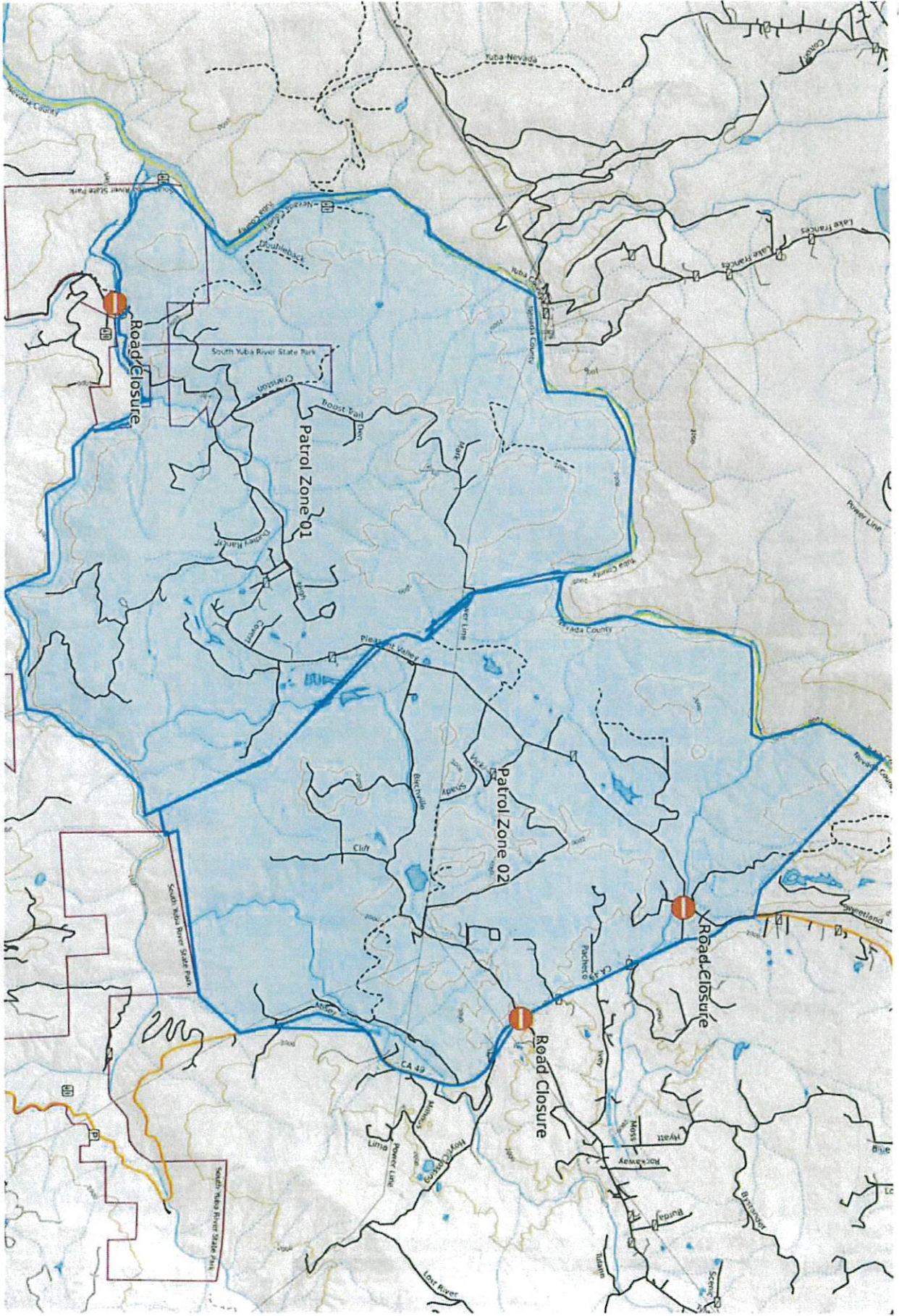
Remain mindful of what is going on around you! LCES!

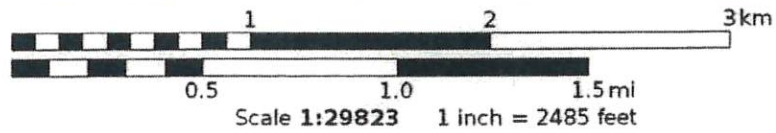
HEADS UP!!! Lookout for SNAGS when working around areas with burned trees. Evaluate all wind damaged trees with large limbs before working under and around them.

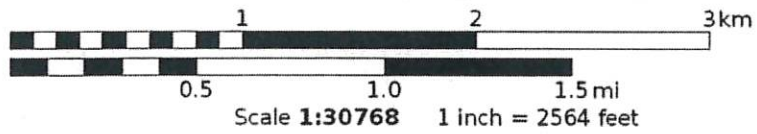
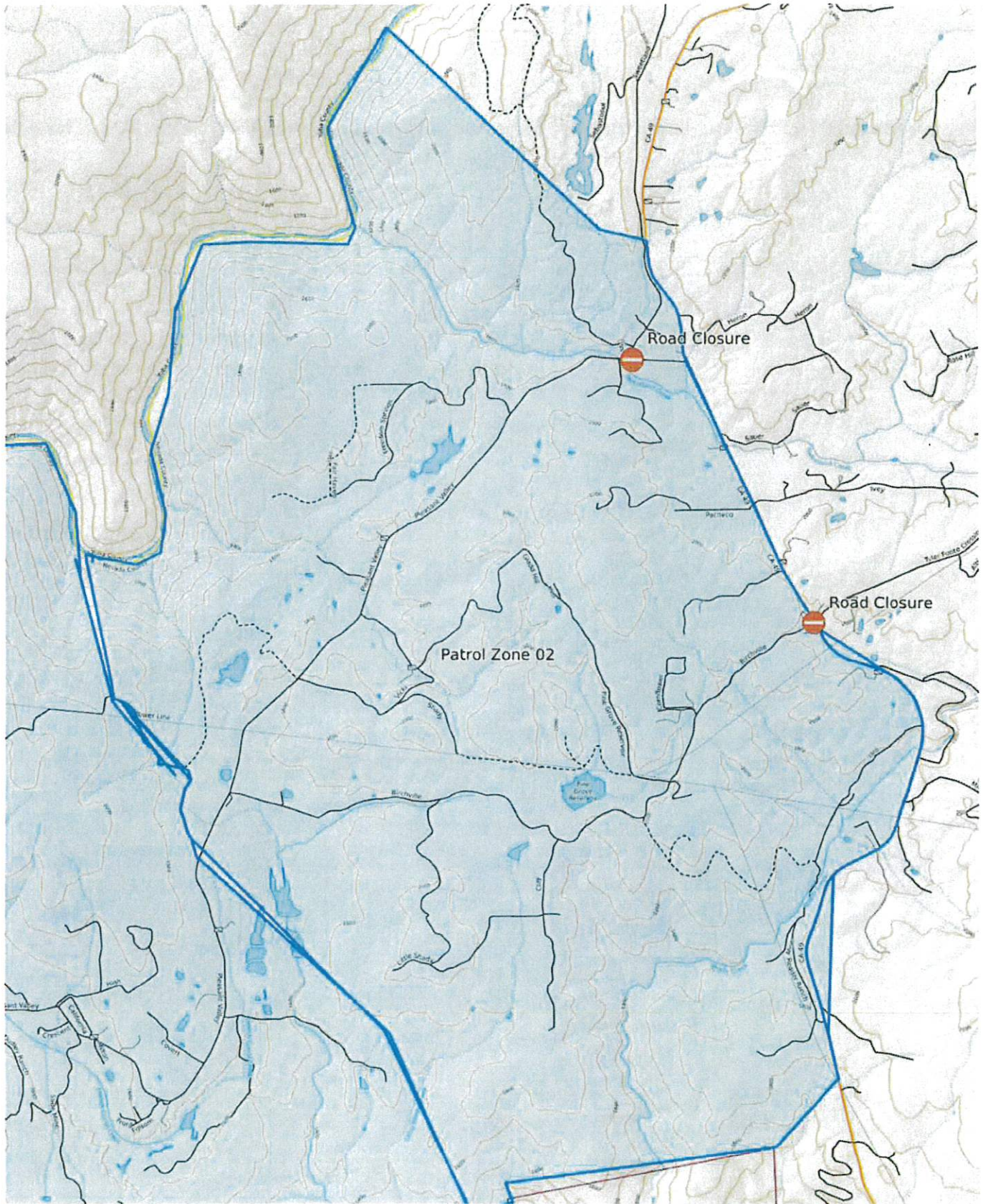
Avoid complacency!!!! Experiencing extreme fire behavior due to low live and dead fuel moistures, persistent drought, and elevated fire danger rating values.

I  
T  
·  
S  
  
U  
P  
  
T  
O  
  
Y  
O  
U  
I  
I  
I  
I  
I  
I  
I  
I  
I  
I  
I

<b>5. Prepared By:</b> D. Van Goidsenhoven	Position/Title: SITL(T)	Signature: 
ICS 208	Date/Time: 6/28/2022 2200	







**UNIT LOG (ICS 214)**

1. Incident Name: Rices

2. Operational Period: Date From: 6/29/22 Date To: 6/30/22  
 Time From: 0700 Time To: 0700

3. Unit Name/Designators

4. Unit Leader (Name and ICS Position)

5. Personnel Assigned/Designators

NAME	ICS POSITION	HOME BASE

6. Activity Log (Continue on Reverse)

TIME	MAJOR EVENTS

7. Prepared By:

Date/Time: NIMS IAP

