

INCIDENT ACTION PLAN MILL INCIDENT

CA-SKU-007568

MOUNTAIN INCIDENT

CA-SKU-007586

Sunday

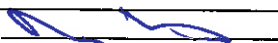


OPERATIONAL PERIOD

9/11/2022 0700
to
9/12/2022 0700



ORGANIZATION ASSIGNMENT LIST (ICS 203)

1. Incident Name: Mill / Mountain Incident		2. Operational Period: Date From: 9/11/2022 Time From: 0700		Date To: 9/12/2022 Time To: 0700	
3. Incident Commander(s) and Command Staff:			7. Operation Section:		
IC/UC's	Todd Hopkins	Operations	S. Ward		
Deputy	David Wood	Deputy Operations	J. Macomb, JC. Greenburg		
Safety Officer	Dan McNamara, Andrew Kibby	Night Ops	M. Ryan		
Information Officer	Suzi Brady				
Liaison Officer	Dave Pucci, Robert Reynolds (T)	Staging Area	GAZELLE STAGING		
Law Enforcement Liaison	Ben Moore, Josh Tindall	Division/Group			
4. Agency/Organization Representatives:		Branch	X	K. Cummings	
Agency/Organization	Name	Division/Group	A / Z		
Siskiyou County SO	Jeremiah LaRue	Division/Group			
CAL OES	Patrick Titus	Division/Group			
USFS	Natalie Kelly	Branch	XX	K. Swope	
Pacific Power & Light	Tyler Averyt	Division/Group	BB / GG	T. England (T)	
BLM	Garret Dunn	Division/Group	LL / OO	C. Cerwin	
Lake Shastina PD	William Bullington	Division/Group			
Weed PD	Justin Mayberry	Division/Group			
CDCR	Jerry Leventon	Division/Group			
		Branch	XXV	C. Swensen	
		Division/Group	PP	D. Hight	
		Division/Group	QQ	C. Aragan	
		Division/Group	RR	B. Lee	
		Division/Group	TT / WW		
		Branch	FSR	J. Scheld (12)	
		Division/Group	FSR NORTH	D. Denman (12)	
		Division/Group	FSR SOUTH	S. Debenedet (12)	
5. Planning Section:					
Chief	Ryan Davis	Division/Group			
Deputy	Sean Griffiths, Dana McCarroll (T)	Division/Group			
Resource Unit	Nick Pimlott, Robert Roland	Division/Group			
Situation Unit	Jim Day, Megan Scheeline	Branch			
Situation Unit Intel	Phillip SeLegue	Division/Group			
Documentation Unit	Michelle Schneider, Kristine Wilder	Division/Group			
Demobilization Unit	Mike Dunkle, Ashley Sanza	Division/Group			
GISS	Peter Rowland	Division/Group			
FBAN	Troy Velin	Division/Group			
IMET	Richard Thomson	Air Operations Branch	Director:	Niko Matteoli	
Training Tech Spec	Dottie Shaw	Air Support Group Supervisor	Matt Munson		
		Air Tactical Group Supervisor	Tim Schiffer		
		Helibase Manager	Skylar Merritt		
6. Logistics Section					
Chief	Brian Pottenger, Tim Fitzgerald				
Supply Unit	Mike Worford	8. Finance/Administration Section:			
Facilities Unit	Travis Heard	Chief	Tiffany Tracy, Matt Rea		
Ground Support Unit	Matt Bellows	Time Unit	Heather Constable (T)		
Communications Unit	Cory Costa, Scott Gamble (T)	Procurement Unit	Tammy Nolan		
Medical Unit	Josh Staley, Steve McGary	Comp/Claims Unit	Mark Walsh		
Food Unit Leader	Steve Chapin	Cost Unit	Mike Kennefic		
Prepared By: Name:	Ryan Davis	Position/Title:	PSC	Signature:	
ICS 203		Date/Time:	9/10/2022 2300 hours		



INCIDENT Weather Forecast

FORECAST NO: 7
PREDICTION FOR: 24 hour shift
SHIFT DATE: 9/11/22-9/12/22 (0700-0700)
FORECAST ISSUED: 9/10/22 @ 1900

NAME OF FIRE: Mill and Mountain
UNIT: CalFire
SIGNED: 
 Rich Thompson Incident Meteorologist

WEATHER DISCUSSION:

Noticeably cooler temperatures are expected across both incidents during the operational periods. With the cooler temperatures, afternoon relative humidity will be higher (in the 18-28% range) with moderate to good recovery expected tonight and Monday morning. There will be a slight chance of light showers in the afternoon and evening hours. At the ridges, southwest to northwest winds will prevail through this evening then will shift to the north late tonight. At lower elevations, typical diurnal winds will be expected.

For Monday, the cooling trend will continue with a slight chance of showers remaining in the forecast. For Tuesday, dry conditions are expected, but conditions will be cool.

WEATHER FORECAST:

WEATHER: Partly to mostly cloudy. Slight chance of showers in the afternoon and evening hours.

TEMPERATURES: Max: 76-86.
 Min: Mountain: 60-66. Mill: 50-56.

HUMIDITY: Min: 18-28%.
 Max: Mountain 35-45%. Mill 50-70%.

20 FT WINDS:

RIDGETOP -

0700-1100: Variable 4-8 MPH.
 1100-1700: Southwest 5-10 MPH Gust 12-16 MPH.
 1700-2200: Northwest 5-10 MPH Gust 12-16 MPH.
 2200-0700: North to northeast 4-8 MPH.

SLOPE/VALLEY -

0700-1000: Variable/upslope 4-8 MPH.
 1000-1900: Upvalley 6-12 MPH Gust 15-20 MPH.
 1900-0700: Downslope/downvalley 4-8 MPH.

STABILITY/MIXING HEIGHT: Moderate instability. Mixing height 9000-11000 feet.


OUTLOOK FOR MONDAY:

Partly to mostly cloudy. A slight chance of showers. High temperatures 73-83. Low temperatures 46-56. Min RH: 25-40%. Max RH: 50-70%. Ridgetop winds: Southwest to west 5-10 MPH Gusts 12-18 MPH. Slope/valley winds: typical diurnal winds with upcanyon gusts around 15 MPH in the afternoon.

OUTLOOK FOR TUESDAY:

Partly cloudy. High temperatures 71-81. Low temperatures 46-56. Min RH: 20-35%. Max RH: 50-70%. Ridgetop winds: Southwest to west 5-10 MPH Gusts 12-18 MPH. Slope/valley winds: typical diurnal winds with upcanyon gusts around 15 MPH in the afternoon.

FIRE BEHAVIOR FORECAST

FORECAST NUMBER: 8	TYPE OF FIRE: WILDFIRE
FIRE NAME: Mill - Mountain	OPERATIONAL PERIOD: Sep 11, 2022, 24 HR
DATE ISSUED: Sep 10, 2022	TIME ISSUED: 1900
UNIT: CALFIRE SISKIYOU UNIT	SIGNED: 
Typed/printed: Troy Velin - FBAN	

INPUTS

WEATHER SUMMARY:

SEE WEATHER INCIDENT FORECAST

OUTPUTS

FIRE BEHAVIOR**GENERAL:**

NFDRS- Energy Release Component is 64 and above the 97th percentile. BI – Burning Index is 46 also above the 97th percentile. 100hr FM 10%, 1000 hr FM 11%. LFM in Manzanita approaching critical at 85%. Annual grass is completely cured. The Mill fire is burning in annual grass, light to heavy brush and scattered high desert timber fuels. The Mountain fire is burning in annual grasses, light to heavy brush and scattered hardwood litter and timber litter. Fire area ranges from 2700' to 6000' elevation. On September 2nd, 2022, a Fuels and Fire Behavior advisory was issued for Northern California. Due to extreme drought, extremely dry fuels and extended periods of hot weather, fire behavior will be elevated for the near future.

SPECIFIC:**Mill**

Monitor for isolated pockets of heat within the perimeter.

Mountain

The area of the Mountain fire is steep and broken. There are deep drainages and incontiguous ridges. Recent field observations and IR data shows that most of the heat is interior of the line. There may still be areas of heat near lines or in areas that may compromise the line. Critically dry fuels and steep terrain will support growth outside of control lines.

DIV RR. The fire is established in the Lime Gulch drainage in heavy timber fuels. This Northeastern aspect will have sun on it early in the day and will be active before lunch. Expect uphill runs towards the ridgelines. Monitor for rollout and spotting.

All other Divisions

- Interior pockets will continue to burn out
- Monitor for rollout
- Trees near the line may still pose a threat
- Stump holes, fire weakened trees, and underground root fires are numerous

AIR OPERATIONS:

Partly to mostly cloudy

SAFETY

Clouds occur when moisture in the atmosphere condenses into visible droplets or ice crystals. This usually occurs when moist air becomes cooled by lifting. The shape and texture of clouds reveals much about whether the lifting process has been gradual and gentle or rapid and potentially violent. Paying attention to the sky can help the firefighter stay aware of the current fire environment as well as anticipate potential changes.

Fuels and Fire Behavior Advisory

Northern California

September 2nd, 2022



Subject: Potential for extreme fire behavior due to critically elevated fire danger indices, low live and dead fuel moistures, and very hot and dry conditions across much of northern California.

Discussion: An extended period of hot, dry weather with embedded periods of enhanced winds will impact Northern California. The elevated fire weather concerns with fuels reaching their yearly minimum moisture values will create conditions conducive to long range spotting, rapid fire growth, and high resistance to control.

Difference from normal conditions: The current values for Energy Release Component (ERC) are at or above the 90th percentile for the majority of Northern California, with live fuel moistures dropping to critical levels as herbaceous and woody fuels cure. These conditions will be exacerbated by a predicted heat wave, resulting in anomalous daytime highs with little relief in temperature or humidity recovery overnight. Some PSA's, may reach daily record ERC values, with all covered PSA's predicted to reach or exceed the 97th percentile for an extended period. The combination of extreme ERC's with high temperatures and poor overnight humidity recovery is highly correlated with extreme fire behavior in Northern California.

Concerns to Firefighters and the Public:

- The advisory coincides with the Labor Day holiday weekend that is likely to result in increased outdoor recreation and visitor use to public lands across Northern California. The increase in public use carries an increased risk of fire starts as well as potential for evacuations of visitors/ recreational users in the event of a fire starting.
- Energy Release Component (ERC) in areas covered by this advisory are at or above the 90th percentile and are expected to approach or exceed the 97th percentile. **Anticipate increased spread rates, long range spotting, and active nighttime burning.**
- The combination of persistent drought, a building heat wave, and a very dry atmosphere will continue to decrease already low fuel moisture values:
 - 1000-hour fuel moistures are below average and approaching the 90th percentile,
 - Live woody fuel moisture in brush is near or slightly below average, making them readily available and will likely reach critical levels because of the forecasted hot, dry weather.
 - The above average herbaceous fuel load at low and mid elevations (below 5,000 ft.) is fully cured, with high elevation herbaceous fuels rapidly curing during the hot, dry forecast.
 - Higher than average surface fuel loading is present in areas that experienced winter snow and ice storms in the Coast Range and northern Sierra Nevada.

Expect fires to ignite easier and spread faster. Do not expect fires to exhibit reduced fire behavior when entering areas of live fuels; anticipate increased spread rates and spotting.

- Periods of enhanced winds are expected during the hot and dry period. Given the current and anticipated fuels conditions, increases in winds will make direct attack of any new starts difficult and may hamper use of aerial resources.
- Review the current North Ops Outlooks and national fuels and fire behavior advisories.

Mitigation Measures:

- Suppression actions need to be based on good anchor points, escape routes, and safety zones. **Remember LCES. Experienced lookouts are essential under these conditions.**
- Base all actions on current and expected behavior of the fire. **Augment initial attack resources as incident activity dictates**
- Fire managers should be aware of high use recreation and visitor sites in their area. **The holiday weekend will bring increased visitor use, increasing risk of starts during critical fire weather.**

Area of Concern: Northern California except for the following Predictive Service Areas: North Coast, Bay Marine, and west of Highway 101 in Mid-Coast to Mendocino.



Mill/Mountain INCIDENT HEALTH AND SAFETY MESSAGE



Maintain Situational Awareness!!!

INCIDENT Mill/Mountain CA-SKU-007568/007586 | **DATE:** September 11, 2022 **TIME:** 0700-0700

Major Hazards and Risks:

COMPLACENCY- HEAT- DRIVING - RECEPTIVE FUELS - SNAGS

Situational Awareness: Assess your current situation constantly. Take the time to educate your crew on various parts of your division as it relates to the safety message.

Environmental Hazards: Be aware of wild animals around the fire area. We have had a few bear sightings on the fireline and in the drop points where trash is waiting for backhaul.

Driving: Drive defensively and make sure you have plenty of clearance when passing on narrow roads. There is no need to speed while going to or returning from the fireline.

Fatigue: Take frequent nutrition and hydration breaks throughout the day. Hydrate with a 2 water to 1 electrolyte drink ratio on hot dry days. Monitor personnel for fatigue and plan accordingly with work assignments. Stay operationally ready for possible new assignments.

Steep Slopes/Rolling Material/Snags: Watch your footing while hiking in steep terrain. Be careful of loose rolling debris. Maintain Situational Awareness while working around trees and snags.

Potential Fire Behavior: Post lookouts when appropriate and monitor weather. A spot outside the line could result in a dangerous rate of spread. Don't be complacent while mopping up, wear proper PPE.

COVID: Maintain good hygiene and report any symptoms to supervisor.

Lookouts, Communication, Escape routes, Safety zones

TAILGATE SAFETY

- **Safety gear:** Ensure everyone has the appropriate PPE and is using it.
- **Accountability:** Supervisors know where their crews are at all times.
- **Hydration and Nutrition:** Monitor each other for proper hydration and nutrition.
- **Communication:** Everyone knows the comm plan and follows it.
- **Briefing:** Leader's intent is fully communicated, and safety briefing is provided.
- **LCES:** They are clear, understandable, and made known to everyone.

Planning For Medical Emergencies

Supervisors and all firefighters need to Review your ICS 206 ask and be able to answer the following questions:

What are we going to do if someone gets hurt?

- Is there personnel and equipment available to assist?

How will we get them out of here?

- What is your best extraction and transport method? Road, helispot, hoist? Primary plan and contingency plan in place?

How long will it take to get them to the hospital?


- Will you request air or ground resources?
- Are helicopters able to fly?

Incident Safety Officer: Dan McNamara, SOF1



**Mill/Mountain Incidents CA-SKU-007568/007586
RISK ANALYSIS (ICS 215a)**



DIV	HAZARDOUS ACTIONS/CONDITIONS	MITIGATIONS / WARNINGS / REMEDIES
ALL	FATIGUE/HEAT/DEHYDRATION	Be alert for signs of fatigue and take breaks as necessary. Monitor incoming resources for level of fatigue. Drink water before, during and after shifts, up to 1.5 gal. per shift. Be alert for signs of heat stress in yourself and others; Find shade when you can. Drink electrolyte drinks at a 2 water to 1 sport drink ratio.
ALL	COMPLACENCY	Don't underestimate the task at hand. Everyone should be briefed on the conditions and circumstances regarding their assignment. Stay focused on the task at hand. We know that there are other incidents going on in the state, but we need to be vigilant and finish this incident. Be alert while working along roadways.
ALL	POTENTIAL FIRE BEHAVIOR	Be aware of changing weather and winds. Fuels are receptive and will carry fire at a dangerous rate of spread if given the opportunity. Post lookouts as appropriate.
ALL	DRIVING HAZARDS	Complete appropriate DOT daily vehicle inspection. Slow Down! Long travel times to the line, stay alert. Stop if fatigued. Drive defensively! Expect the unexpected around every curve. Drive with headlights and seatbelts on. Narrow roads with limited passing room. Expect roads to deteriorate over the shift.
ICP Ground Support	DEMOB	Watch out for pedestrian and vehicle congestion. Provide spotters when backing or driving in tight places. Monitor fatigue when traveling home. Secure and stow gear and equipment within your vehicle.
Mountain	AIRCRAFT OPERATIONS	Use air-to-ground frequency to communicate with aircraft. Monitor air-to-ground frequency, they are your eyes in the sky. Use clear, concise statements when directing aircraft. Clear the area for incoming water and retardant drops.
ALL	HEAVY EQUIPMENT	Watch for rolling material avoid working below heavy equipment. Monitor safe working distances provide adequate working space.
ALL CAMP HOTELS	COVID 19	Wear a mask when applicable. Utilize hand sanitizer and wash hands frequently. Maintain social distancing. Disinfect apparatus and coolers frequently. Adhere to local, state and federal Covid-19 guidelines.
ALL	COMMUNICATIONS	Confirm correct tactical and command channel. No unassigned radio channels. Check your Air to Ground channel to make sure it is correct. Check your tactical frequency if you have moved branches or divisions.
ALL	HAZARD TREES/TREE FELLING SAFETY	Identify and isolate the area to provide for the safety of others. Flag and make proper notifications. Size up and mitigate concerns, put the tree fire out if possible! Work within your qualifications if considering felling a tree
ALL	ENVIRONMENTAL HAZARDS	Maintain situational awareness for illegal activity, Be aware of wild animals. (Bears, Mountain Lions, Bees, etc.) Bow hunting season is open near the Mountain fire area. Be aware of possible propane leaks and live wires in areas of damaged structures.
Incident Name: Mill/Mountain ICS 215a		DATE PREPARED: Dan McNamara Safety:  OPERATIONAL PERIOD: September 11, 2022 0700-0700

CAL FIRE Hydration Logistical Planning Pocket Card

California Code of Regulations (CCR), Title 8, [§3395\(c\)](#) states:

“Employees shall have access to potable drinking water meeting the requirements of Sections 1524, 3363, and 3457, as applicable. Where it is not plumbed or otherwise continuously supplied, it shall be provided in sufficient quantity at the beginning of the work shift to provide one quart per employee per hour for drinking for the entire shift. Employers may begin the shift with smaller quantities of water if they have effective procedures for replenishment during the shift as needed to allow employees to drink one quart or more per hour. The frequent drinking of water, as described in (e), shall be encouraged.”

RESOURCE / PERSONNEL TOTALS	1 HR	3 HR	Cases 3 HR	6 HR	12 HR	24 HR	Cases 24 HR	
Engine	4	8	24	1	48	96	192	8
Engine S/T	21	42	126	5.25	252	504	1008	42
Hand Crew	18	36	108	4.5	216	432	864	36
Crew S/T	37	74	216	9	444	888	1776	74
Dozer	1	2	6	0.25	12	24	48	2
Overhead	1	2	6	0.25	12	24	48	2
Helitack Crew	10	20	60	2.5	120	240	480	20
Needs based on 16oz. bottles/24 bottles per case. Each individual shall be provided with a minimum of 2 water bottles per hour.								

CA-SKU-007568
OLD REQUEST NUMBER

MILL TO MOUNTAIN

CA-SKU-007586
NEW REQUEST NUMBER

C-2	STG - 9243G	C-30
C-7	STG - 9258G	C-36
E-12	DOZ2 - SKINNERS ROADSIDE TRUCK REPAIR	E-125
E-29	STC - 1275C	E-130
E-271	W/T - SCOTT VALLEY - 1597	E-131
E-52	W/T - BERNARD DOWLING	E-132
E-165	DOZ2 - LET-ER-BUCK TRUCKING INC	E-140
E-167	DOZ2 - ACT FAST NATIONWIDE	E-142
E-168	DOZ2 - EVANS BROTHERS	E-143
E-170	DOZ2 - GILES EXCAVATING & PAVING	E-145
E-174	DOZ2 - HIGH MOUNTAIN EXCAVATION	E-149
E-175	DOZ2 - COTTONWOOD EQUIPMENT	E-150
E-21	STC - 9240C	E-151
E-241	LOWBOY - COTTONWOOD EQUIPMENT	E-152
E-240	LOWBOY - HIGH MOUNTAIN EXCAVATION	E-154
E-236	LOWBOY - GILES EXCAVATING & PAVING	E-158
E-234	LOWBOY - EVANS BROTHERS	E-161
E-233	LOWBOY - ACT FAST NATIONWIDE	E-162
E-231	LOWBOY - LET-ER-BUCK TRUCKING	E-164
E-290	W/T - PRODUMP AND EXCAVATING	E-173
E-37	W/T - HARRIS EMERGENCY SERVICES	E-176
E-45	W/T - GRANT HANNA	E-184
E-53	W/T - MATTHEW JOHNSON	E-191
E-66	ENG5 - BLACKSTONE FORESTRY	E-195
E-67	ENG4 - ALLIED WATER SERVICE INC	E-196
C-4	STF - 9211G	C-45
E-94	DOZ2 - 2642	E-220
E-106	ENG3 - CAKNF E357	E-221
E-270	ENG3 - SCOTT VALLEY - 1518	E-226
E-90	STC - 4181C	E-228
E-63	STC - 9121C	E-230
E-23	STC - 9220 C	E-232
E-35	STC - 2381C	E-235
E-129	STF - OES - 2861F	E-236
E-89	STC - 4230C	E-345
E-93	DZR2 - 2640	E-349
E-65	ENG3 - J3 CONTRACTING	E-361
E-68	ENG4 - JD FORESTRY	E-362
C-34	CRW2 - PACIFIC OASIS	C-48
E-30042	EXC2 - WD EXCAVATOR	E-371
E-30045	LBCF - LOWBOY WD	E-372
E-30035	WTC2 WATER TENDER- PJ&R 519	E-373
E-30043	EXC2 - EXCAVATOR M. PETERS 187	E-374
E-30047	LBCF - LOWBOY 3971 M. PETERS 9662	E-377
E-30050	SKID - TRACK SKIDSTEER WARNER ENT. 600	E-375
E-30055	LBCF - LOWBOY MONIZ LOG & LIVESTOCK 331	E-378
E-30048	EXC4 - EXCAVATOR T4 - MELO EXCAVATION 797	E-376
E-30051	LBCF - LOWBOY - ROLL N ROCK CON. 453	E-379
E-30037	W/T - GARR	E-
E-30038	W/T - LUNTEY'S	E-

CA-SKU-007568

COYOTE INCIDENT

CA-SKU-007586

CA-SKU-007798

OLD REQUEST NUMBER

MOUNTAIN REQUEST NUMBER

COYOTE REQUEST NUMBER

E-39	W/T - HITCHCOCK'S CONSTRUCTION INC	E-178	E-7
E-56	W/T - JACK HURLIMANN	E-194	E-8
E-58	W/T - FRANK HURLIMANN	E-199	E-13
E-32	STC - 9213C	E-231	E-16
C-18	STG - 9122G		C-1
E-26 MILL	STC - 9161C		E-12
E-133 MILL	STC - 1471C		E-18
C-1	STG - 9257G		C-2
C-2	STG - 9169G		C-3
E-102	HUU 9120C		E-22
O-23	Collamer, Sarah		O-6
O-117	OPBD COBB, DENNIS		O-7

CA-SKU-007798

COYOTE TO MOUNTAIN

CA-SKU-007568

OLD REQUEST NUMBER

NEW REQUEST NUMBER

E-17	STC - 3150C	E-382
E-19	STC - 3675C	E-383
E-37	STC - 3300C	E-384
E-36	STF - XSU - 3226	E-408
E-6	W/T - DRISKELL TRUCKING LLC	E-409
E-11	STC - 6220C	E-385
E-24	DO22 - LAND 2C	E-410

ASSIGNMENT LIST (ICS 204 WF)

CONTROLLED UNCLASSIFIED
INFORMATION//BASIC

1. Incident Name: Mill / Mountain Incident	2. Operational Period: Date From: 09/11/22 Date To: 09/12/22 Time From: 0700 Time To: 0700	3. Branch Division XX LL / OO
---	---	--

4. Operations Personnel:		Page 1 of 1
Operations Section Chief: S. Ward Branch Director: K. Swope Division/Group Supervisor: C. Cerwin	Night Ops: M. Ryan Branch Safety: Air Attack: Tim Schiffer	

5. Resources Assigned:		** Resources Below in Bold are 12 Hour **					
Resource Identifier	ALS	LWD	Leader	Personnel	Request #	Hours	Reporting Location
T/F MTN 1			DAVID BALGONINI	15	O-70	0700-1900	DP 27
ENG PVT E-85 TIMBERLINE			ERIK BRINK	3	E-85	0700-1900	DP 27
ENG PVT E-86 BIG STATE			CODY PLATZ		E-86	0700-1900	DP 27
ENG PVT E-87 XTREME			CAMPANSANO	3	E-87	0700-1900	DP 27
ENG PVT E-92 ROCKY MOUNTAIN			SHANE STREHLE	3	E-92	0700-1900	DP 27
ENG PVT E-96 NATIONAL 332			ADAM PRICE	3	E-96	0700-1900	DP 27
ENG PVT E-195 BLACKSTONE			TYLER STEVENSON	3	E-195	0700-1900	DP 27
W/T SVF 1537			STEVE POLING	1	E-131	0700-1900	DP 27
W/T PVT E-16 ROLL'N ROCK			JUSTIN GRAY	2	E-16	0700-1900	DP 27
W/T PVT E-19 FIVE			ASA BENNET	1	E-19	0700-1900	DP 27
W/T PVT E-22 TRINITY			ROGER BLANCETT	2	E-22	0700-1900	DP 27
W/T PVT E-24 HD FIRE			DERRIN HOWELL	2	E-24	0700-1900	DP 27
W/T PVT E-52 T&S			JORDAN PARTLETT	2	E-52	0700-1900	DP 27

6. Work Assignments:
Construct control lines as direct as possible.
Insert hose lay.

7. Special Instructions:
T/F MTN 1 resources: TFLD Bolognini, E-81, E-82, E-90, E-93, E-95

8. Communications								
Name	Ch	Function	Rx Freq	Rx Tone	Tx Freq	Tx Tone	Mode	Notes
CDF C10	1	COMMAND	151.1900	(T8) 103.5	159.2250	(T2) 123.0	A	MILL / MOUNTAIN
CDF T28	5	TACTICAL	151.1825	(T16) 192.8	151.1825	(T16) 192.8	A	
A/G TAC	14	A/G TAC	169.1500		169.1500		A	A/G TAC
CALCORD	15	MEDICAL	156.0750	(T6) 156.7	156.0750	(T6) 156.7		
GUARD	16	AIR GUARD	168.6250	0.0	168.6250	(T1) 110.9	EMERGENCY USE ONLY	

9. Prepared by: Name: Robert Roland	RESL	Signature:
ICS 204	Date/Time: 9/10/2022 2200	Personnel Count: 40

ASSIGNMENT LIST (ICS 204 WF)

CONTROLLED UNCLASSIFIED
INFORMATION//BASIC

1. Incident Name: Mill / Mountain Incident		2. Operational Period: Date From: 09/11/22 Date To: 09/12/22 Time From: 0700 Time To: 0700				3. Branch FSR		Division FSR NORTH	
4. Operations Personnel: Operations Section Chief: S. Ward Branch Director: J. Scheid (12) Division/Group Supervisor: D. Denman (12)						Night Ops: M. Ryan Branch Safety: Air Attack: Tim Schiffer			
5. Resources Assigned:						** Resources Below in Bold are 12 Hour **			
Resource Identifier	ALS	LWD	Leader	Personnel	Request #	Hours	Reporting Location		
ENG PVT E-99 LOOMIS 43			DAVID MELENDEZ	3	E-99	0700-1900	DP 25		
DOZ PVT E-33 ARCHI					E-33	0700-1900	DP 25		
DOZ PVT E-34 BAR G			JAMES ROSS	1	E-34	0700-1900	DP 25		
DOZ PVT E-140 BUCK			STEVE LASSEN	2	E-140	0700-1900	DP 25		
DOZ PVT E-145 GILES			MIKE GILES	4	E-145	0700-1900	DP 25		
DOZ PVT E-149 HIGH			TRAVIS BUNTING	4	E-149	0700-1900	DP 25		
W/T PVT E-63 CONVERSE			STEVE SCHEPPS	2	E-63	0700-1900	DP 25		
W/T PVT E-73 Q EQUIP			MARIO QUEZADA	2	E-73	0700-1900	DP 25		
W/T PVT E-132 BERNARD				1	E-132	0700-1900	DP 25		
W/T PVT E-176 HARRIS			STEVE SNOW	2	E-176	0700-1900	DP 25		
W/T PVT E-191 JOHNSON			MATHEW JOHNSON	1	E-191	0700-1900	DP 25		
W/T PVT E-373 PJ			PAUL YOKOYAMA	2	E-373	0700-1900	DP 25		
EXC PVT E-357 2C LAND			ANTHONY BYRUM	1	E-357	0700-1900	DP 25		
EXC PVT E-376 MELO			MATT MELO	2	E-376	0700-1900	DP 25		
SKID PVT E-375 WARNER			GARY WARNER	1	E-375	0700-1900	DP 25		
HEQB STRANGE						0700-1900	DP 25		
HEQB ASMUS (T)			TRAVIS ASMUS	1	O-41	0700-1900	DP 25		
HEQB LOVE (T)			CHRISTOPHER LOVE	1	O-50	0700-1900	DP 25		
6. Work Assignments: Assess for suppression repair needs. Conduct suppression repair operations.									
7. Special Instructions:									
8. Communications									
Name	Ch	Function	Rx Freq	Rx Tone	Tx Freq	Tx Tone	Mode	Notes	
CDF C10	1	COMMAND	151.1900	(T8) 103.5	159.2250	(T2) 123.0	A	MILL / MOUNTAIN	
CDF T32	7	TACTICAL	151.2425	(T16) 192.8	151.2425	(T16) 192.8	A	FSR N & FSR S / MOUNTAIN	
A/G TAC	14	A/G TAC	169.1500		169.1500		A	A/G TAC	
CALCORD	15	MEDICAL	156.0750	(T6) 156.7	156.0750	(T6) 156.7			
GUARD	16	AIR GUARD	168.6250	0.0	168.6250	(T1) 110.9	EMERGENCY USE ONLY		
9. Prepared by: Name: Robert Roland			RESL			Signature:			
ICS 204		Date/Time: 9/10/2022 2200			Personnel Count: 30				

NIMS IAP

CONTROLLED UNCLASSIFIED INFORMATION//BASIC

ASSIGNMENT LIST (ICS 204 WF)

CONTROLLED UNCLASSIFIED
INFORMATION/BASIC

1. Incident Name: Mill / Mountain Incident	2. Operational Period: Date From: 09/11/22 Date To: 09/12/22 Time From: 0700 Time To: 0700	3. Branch Division FSR FSR SOUTH
---	---	---

Page 1 of 1

4. Operations Personnel: Operations Section Chief: S. Ward Branch Director: J. Scheid (12) Division/Group Supervisor: S. Debenedet (12)		Night Ops: M. Ryan Branch Safety: Air Attack: Tim Schiffer
--	--	--

5. Resources Assigned:		** Resources Below in Bold are 12 Hour **					
Resource Identifier	ALS	LWD	Leader	Personnel	Request #	Hours	Reporting Location
ENG PVT E-94 KS CONTRACTING			KEN SPACHT	3	E-94	0700-1900	DP 25
ENG PVT E-100 LOOMIS 46			PAUL HUDDLESTON	3	E-100	0700-1900	DP 25
DOZ PVT E-32 FIVE STAR			ASA BENNET		E-32	0700-1900	DP 25
DOZ PVT E-35 JUNWIRTH			JERRY JUNWIRTH		E-35	0700-1900	DP 25
DOZ PVT E-143 EVANS			TOM EVANS	1	E-143	0700-1900	DP 25
W/T PVT E-69 WELLS			JEFF WELLS	2	E-69	0700-1900	DP 25
W/T PVT E-111 BLK KNIGHT			ELLEN SCHAAR		E-111	0700-1900	DP 25
W/T PVT E-112 BLK KNIGHT			DUSTIN SCHAAR		E-112	0700-1900	DP 25
W/T PVT E-173 PRODUMP 7			MIKE SEABORN		E-173	0700-1900	DP 25
W/T PVT E-184 GRANT			KEN KELLY	2	E-184	0700-1900	DP 25
EXC PVT E-355 MCLERAN			RICHARD MCLERAN	1	E-355	0700-1900	DP 25
EXC PVT E-371 WD HEAVY EQU			ADAM DANIELS	1	E-371	0700-1900	DP 25
EXC PVT E-374 PETERS			ROB JACKSON	1	E-374	0700-1900	DP 25
HEQB LEWIS			PATRICK LEWIS		O-53	0700-1900	DP 25
HEQB SCHIELER (T)			DAKOTA SCHIELER		O-55	0700-1900	DP 25
FALM PVT O-352 TREE WORX			SEAN MURRAY	2	O-352	0700-1900	DP 25
FALM PVT O-354 PICHARD			ZACKARY PICHARD	1	O-354	0700-1900	DP 25

6. Work Assignments: Assess for suppression repair needs. Conduct suppression repair operations.

7. Special Instructions:

8. Communications								
Name	Ch	Function	Rx Freq	Rx Tone	Tx Freq	Tx Tone	Mode	Notes
CDF C10	1	COMMAND	151.1900	(T8) 103.5	159.2250	(T2) 123.0	A	MILL / MOUNTAIN
CDF T32	7	TACTICAL	151.2425	(T16) 192.8	151.2425	(T16) 192.8	A	
A/G TAC	14	A/G TAC	169.1500		169.1500		A	A/G TAC
CALCORD	15	MEDICAL	156.0750	(T6) 156.7	156.0750	(T6) 156.7		
GUARD	16	AIR GUARD	168.6250	0.0	168.6250	(T1) 110.9	EMERGENCY USE ONLY	

9. Prepared by: Name: Robert Roland	RESL	Signature:
--	------	------------

ICS 204	Date/Time: 9/10/2022 2200	Personnel Count: 17
---------	---------------------------	---------------------

AIR OPERATIONS SUMMARY ICS-220										Time Prepared		Date Prepared		Prepared By	
Incident Name / Number		Sunrise		Startup		Cutoff		Sunset		Shutdown		Operational Period - Date		Operational Period - Time	
Mountain / CA-SKU-007586		649		719		1852		1922		1400 1952		Saturday, September 10, 2022 Sunday September 11, 2022		Niko Matteoli 0700-2100	
<p>General Remarks, Safety Notes, Hazards, Air Operations Special Equipment, etc. TRACK ALL DIPSITE LOCATIONS / NUMBER OF DIPS / GALLONS TAKEN. TRACK ALL DROP LOCATIONS / NUMBER OF DROPS / GALLONS DROPPED ALL GPS DATA TO BE COLLECTED IN DEGREES, MINUTES, DECIMAL MINUTES FORMAT. AVOID Aerial Application of Retardant / Foam / Agent within 300' of Waterways, Bodies of Water, etc. If Retardant / Foam / Agent is Dropped Within These Areas Immediately Notify the AOB and Provide the Following Information: Lat / Long, Estimated Number of Gallons and a Map Detailing The Area.</p>															
<p>Your Sunrise and Sunset info has not been updated for the current Op period <input type="button" value="Update"/></p>															
Frequencies	Rx	Tone	Tx	Tone	AM / FM	Position	Name	Phone	Trainee	Phone	Rescue Ship Information				
COMMAND- CDF G10	151.1900	(18) 103.5	159.2250	OST	FM	AOBD	Niko Matteoli	(704) 488-2460			Day/Boat	Night/Boat			
AIR TACTICS	168.8000		168.8000		FM	ASGS	Matt Munson	(707) 228-6648			Name	G620			
AIR/AIR ROTOR VIC/IFR	123.1750		123.1750		AM	HBM	Skyler Merritt	(831) 818-6323			Phone				
FW BRIEFING	118.0250		126.7750		AM						Make/Model	UH-60			
RW BRIEFING	126.7750		126.7750		AM						Location	Weed Airport			
A/G COMMAND	159.3450	(116) 192.8	159.3450	(116) 192.8	FM	HLCO	Eric Gornberg	(408) 832-4619			Request Procedure for These Aircraft:	UH-60			
A/G TACTICAL	169.1500		169.1500		FM	HLCO	Alex Lujan	(530) 925-0934			Mountain Communications	Weed Airport			
TOLC	123.0250		123.0250		AM						See Medical Plan For Additional Info				
DECK	168.3500		168.3500		FM										
CALCORD - MEDICAL	156.0750	156.7 (6)	156.0750	156.7 (6)	FM										
AIRGUARD - Emergency Only	168.8250	110.9 (1)	168.8250		FM	AAML	Crystal Henson	(707) 599-5345							
HELICOPTERS (Use page 2 if Needed)															
FAA #	Type	Make/Model	Helibase	Avail	Start	Remarks	FAA #	Type	Make/Model	Helibase	Avail	Start	Remarks		
3TW	I	UH-60	Weed	0800	0830	LL									
9PJ	I	UH-60	Weed	0800	0830	LL									
9PG	I	UH-60	Weed	0800	0830	LL									
9PG	I	UH-60	Weed	0800	0830	LL									
3HT	I	S-64	Weed	0800	0830	Tank									
1CH	I	CH-47D	Weed	TBD	TBD	Tank									
	I		Weed	TBD	TBD										
CNU	II	B 212HP	Weed	0800	0830	LL, Standard									
2HS	III	AS350 B3	Weed	0800	0830	Helico/Recon									
4TV	III	AS350 B3	Weed	0800	0830	Helico/Recon									
FIXED WING (Use Page 2 if Needed)															
FAA #	Type	Make/Model	Base	Avail	Start	Remarks	FAA #	Type	Make/Model	Base	Avail	Start	Remarks		

Niko Matteoli

ICS 205 - INCIDENT RADIO COMMUNICATIONS PLAN

CONTROLLED UNCLASSIFIED
INFORMATION//BASIC

1. Incident Name: Mill / Mountain Incident Incident Channels	2. Date/Time Prepared Date: 09/10/2022 Time: 1930	3. Operational Period: Date From: 09/11/22 Time From: 0700 Date To: 09/12/22 Time To: 0700
---	--	---

4. Communications											
Ch#	Function	Name	Assigned To	Rx Freq	Rx Tone	Tx Freq	Tx Tone	Mode	Notes		
1	COMMAND	CDF C10	ALL DIVS	151.1900	(T8) 103.5	159.2250	(T2) 123.0	A	MILL / MOUNTAIN		
2											
3											
4	TACTICAL	CDF T27	DIV BB / GG	159.3075	(T16) 192.8	159.3075	(T16) 192.8	A			
5	TACTICAL	CDF T28	DIV LL / OO	151.1825	(T16) 192.8	151.1825	(T16) 192.8	A			
6	TACTICAL	CDF T31	DIV TT / WW	159.3825	(T16) 192.8	159.3825	(T16) 192.8	A			
7	TACTICAL	CDF T32	FSR BR	151.2425	(T16) 192.8	151.2425	(T16) 192.8	A	FSR N & FSR S / MOUNTAIN		
8	TACTICAL	NIFC T1	DIV A / Z / STAGING	168.0500	(T2) 123.0	168.0500	(T2) 123.0	A	GAZELLE STAGING		
9	TACTICAL	NIFC T3	DIV RR	168.6000	(T2) 123.0	168.6000	(T2) 123.0	A			
10	TACTICAL	NIFC T5	DIV QQ	166.7250	(T2) 123.0	166.7250	(T2) 123.0	A			
11	TACTICAL	NIFC T6	DIV PP	166.7750	(T2) 123.0	166.7750	(T2) 123.0	A			
12											
13	A/G CMD	CDF T18	ALL DIVS	159.3450	(T16) 192.8	159.3450	(T16) 192.8	A	A/G CMD		
14	A/G TAC	A/G TAC	ALL DIVS	169.1500		169.1500		A	A/G TAC		
15	MEDICAL	CALCORD	ALL DIVS	156.0750	(T6) 156.7	156.0750	(T6) 156.7	A			
16	AIR GUARD	GUARD	ALL DIVS	168.6250	0.0	168.6250	(T1) 110.9	A	EMERGENCY USE ONLY		
17											
18											
19											
20	AIR GUARD	GUARD	ALL DIVS	168.6250	0.0	168.6250	(T1) 110.9	A	EMERGENCY USE ONLY		

5. Special Instructions
 THE FIRE HAS ONLY ONE GROUP IN THE RADIO, ONE COMMAND FOR THE MILL AND MOUNTAIN FIRE.

6. Prepared by (Communications Unit Leader): Name: Cory Costa COML	Signature:
ICS 205 - CONTROLLED UNCLASSIFIED INFORMATION//BASIC	NIMS IAP Date/Time: 09/10/22 1930

MEDICAL PLAN ICS 206	1. INCIDENT NAME MILL/MOUNTAIN INCIDENT	2. DATE PREPARED 09/10/2022	3. TIME PREPARED 1800	4. OPERATIONAL PERIOD 09/11-09/12 0700-0700
---------------------------------	--	--	--------------------------------------	--

5. INCIDENT MEDICAL AID STATIONS

MEDICAL SUPPLY STATIONS	LOCATION	PARAMEDICS	
		YES	NO
MERT	YREKA BASE CAMP	NP	

6. TRANSPORTATION

A. AMBULANCE SERVICES

NAME	LOCATION	PHONE	PARAMEDICS	
			YES	NO
Mountain Medics 102, 103	102-DAY, 103-NIGHT	CMD CHANNEL	X	
Mountain Medics Mobile Tx with UTV	Branch XX	CMD CHANNEL	X	

B. AIR AMBULANCES

NAME	LOCATION	PARAMEDICS	
		YES	NO
CALIFORNIA GUARD 820 (24 HOUR HOIST)	WEED AIRPORT --CONTACT CMD--		X

7. HOSPITALS

NAME	ADDRESS	TRAVEL TIME		PHONE Frequency	HELIPAD		BURN CENTER	
		AIR	GRD		YES	NO	YES	NO
FAIRCHILD MED CENTER	444 BRUCE ST, YREKA 41' 43.154' N, 122' 38.702' W	15 Min	30 Min	(530) 841-6292		X		X
UC DAVIS MED CENTER TRAUMA LVL 1	2315 STOCKTON AVE SACRAMENTO 38' 33.292' N, 121' 27.317' W	90 Min	6 HR	(916) 734-2011	X		X	
MERCY MEDICAL TRAUMA LVL 2	2175 ROSALINE AVE REDDING 40' 34.334' N, 122' 23.797' W	45 Min	90 Min	(530) 225-7200	X			X
ASANTE ROGUE VALLEY TRAUMA LVL 2	2825 BARNETT RD MEDFORD 42' 19.078' N, 122' 49.907' W	45 Min	90 Min	(541) 789-7116	X			X

8. MEDICAL EMERGENCY PROCEDURES

**EMERGENCY FREQUENCY:
"LINE EMERGENCY"**

The Crew Supervisor will contact the Division Supervisor with patient complaint/condition, location and resource needs.

- Division/Group Supervisor contacts:
 1. Closest EMS resource
 2. Communications Unit
- Communications Unit contacts:
 1. Ground or Air ambulance as requested
 2. Operations
 3. Safety
 4. Medical Unit
- Division Supervisor or designee will serve as point of contact and run medical emergencies on the assigned channel.
 1. A pre-assigned COMMAND frequency and CALCORD should be used for IWI and only for duration of need.
- Communications Unit will clear the command channel for emergency traffic as needed and only for the duration of need.

CAMP EMERGENCY:

Contact the Medical Unit 831-325-4221 with a patient complaint/condition and location. Medical Staff will respond to stabilize incident:

- Medical Unit contacts:



1. Communications	4. Operations
2. Safety	5. Crew Supervisor
3. Logistics	6. Comps/Claims

INJURY REPORTING PROCEDURES

CHIEF COMPLAINT _____
 LOCATION OF PATIENT _____
 POINT OF CONTACT _____
 TRANSPORTATION REQUESTED BY: AIR ___ GROUND ___
 POINT OF PICKUP _____
 LAT _____ LONG _____
 PATIENT UNIT ID _____
 IS AN EMT/P WITH PATIENT: YES ___ NO ___
 AGE _____
 SEX: MALE ___ FEMALE ___

**ALL EMERGENCIES—Secure the area
and identify witnesses for later investigation.
Keep an accurate log of events.**

**EMERGENCY
916-883-0931**

ICS 206	9. PREPARED BY: (Medical Unit Leader) JOSH STALEY-(MEDL) 	10. REVIEWED BY: (Safety Officer) ANDREW KIBBY-(SOF1) 
----------------	--	---

\$ FINANCE MESSAGE \$

***Please No Off Site Feeding Unless Approved by a Finance Section Chief.**

CAL FIRE PERSONNEL

If anyone has any CalCard travel receipts and meal/lodging sign in sheets, please get a copy to Finance.

Don't forget to stop at the TIME Unit and do two separate FC33's if you were assigned to both Incidents please.

FEDERAL RESOURCES

Please see the attached information labeled "Mill & Mountain Incident Fed & Fed Contract Resources". Here you will find detailed information for you to send and how to send your documents to a Federal Timekeeper.

LOCAL GOVERNMENT RESOURCES

Make sure you check in with OES for F-42 Paperwork.

ALL HIRED EQUIPMENT

Make sure you get your shift ticket filled out by your **Division Group Supervisor or Supervisor each shift.**

ALL SUPERVISORS OF HIRED EQUIPMENT

Shift Tickets for hired equipment need to be signed and turned in to TIME **daily**. Ensure the shift ticket is filled out completely (including evaluation), accurately and legibly. **Example included in IAP.**

PROPERTY DAMAGE or INJURIES

Please report any property damage caused by suppression activities and/or injuries to the Comp/Claims Unit ASAP **(951) 234-7667**.

MILL & MOUNTAIN INCIDENT

FED & FED CONTRACT RESOURCES

Please send all documents to R5.CalFire.Support@firenet.gov for all resources.

NOTE: Please scan a single resources order number's documents at a time. Do not scan multiple resource orders' CTRs and Shift Tickets together. Thank you.

Email all documents that pertain to your assignment:

Agency Personnel	Agency ADs / EFFs	VIPR Resources	Contract / Agency Crews
<ul style="list-style-type: none"> • Crew Time reports (CTR) 	<ul style="list-style-type: none"> • Resource Order • Casual Hire Form • Crew Time reports (CTR) 	<ul style="list-style-type: none"> • Resource Order • VIPR Agreement # • Schedule of Items • Inspections • Shift Tickets 	<ul style="list-style-type: none"> • Resource Order • Manifest • Agreement / Contract Schedule of Items • Inspections • Crew Time Reports / Shift Tickets

Submit Equipment Shift Tickets or Crew Time Reports (CTRs) daily to R5.CalFire.Support@firenet.gov

Please include your email address and phone number in the body of the email when sending your documents.

If you have any questions, please call: FINANCE – (512) 829-1479



24 Hour Shift

EMERGENCY SHIFT TICKET and EVALUATION FORM					Contractor Name											
The responsible Government Officer will complete this form each shift					Fireline Builders											
Incident or Project Name August Complex West Zone		Incident Number CAMEU010843	Request Number E-99		Operator #1 Jim Smith	Operator #2 John Jones										
Agreement Number LNU01234567					Operator Furnished By: <input checked="" type="checkbox"/> Contractor <input type="checkbox"/> Government											
Equipment Make CAT		Equipment Model / Type Dozer D6H			Operating Supplies Furnished By: <input checked="" type="checkbox"/> Contractor <input type="checkbox"/> Government											
Serial Number 6LN3344		Licence Number				Equipment Status <input checked="" type="checkbox"/> Inspected <input checked="" type="checkbox"/> Under Agreement <input type="checkbox"/> Released by Government <input type="checkbox"/> Withdrawn by Contractor										
Equipment Use (Circle) Hours / Days / Miles					Remarks/Comments **											
Date Mo / Day	Start	Stop	Work	Assignment												
8/2	0700	2400	17	Division J												
8/3	0001	0700	7	Division J												
Vendor Rating					Govt. Rep. Name and Position - PRINT Mike Brown, Div J											
<table border="1"> <tr> <th>Poor*</th> <th>Avg.</th> <th>Good</th> <th>Exc.</th> <th>N/A</th> </tr> <tr> <td></td> <td></td> <td></td> <td></td> <td></td> </tr> </table>					Poor*	Avg.	Good	Exc.	N/A						Govt. Rep. Signature <i>Mike Brown</i>	
Poor*	Avg.	Good	Exc.	N/A												
Met Performance Expectations					Contractor Signature <i>Jim Smith</i>											
Equipment in Safe Working Condition					Date 08/03/16											
Operator Skill Level					Time 0700											
Operates Safely					CALFIRE 297 (Rev 3-2011)											
Operator's Cooperation Level																
Overall Performance																

* NOTE: Any rating of POOR requires an explanation in Comment Section.
 **Final evaluation or for more documentation, use an ICS Form 230 or equivalent.

Pink - Finance Blue - Home Unit HE Coordinator Yellow - Vendor White - Govt Representative

12 Hour Shift

EMERGENCY SHIFT TICKET and EVALUATION FORM					Contractor Name											
The responsible Government Officer will complete this form each shift					H2O For You											
Incident or Project Name August Complex West Zone		Incident Number CAMEU010843	Request Number E-89		Operator #1 James Russell	Operator #2										
Agreement Number LNU11111199					Operator Furnished By: <input checked="" type="checkbox"/> Contractor <input type="checkbox"/> Government											
Equipment Make Peterbilt		Equipment Model / Type 2000 Gallon			Operating Supplies Furnished By: <input checked="" type="checkbox"/> Contractor <input type="checkbox"/> Government											
Serial Number 11145N		Licence Number SE653574				Equipment Status <input checked="" type="checkbox"/> Inspected <input checked="" type="checkbox"/> Under Agreement <input type="checkbox"/> Released by Government <input type="checkbox"/> Withdrawn by Contractor										
Equipment Use (Circle) Hours / Days / Miles					Remarks/Comments **											
Date Mo / Day	Start	Stop	Work	Assignment												
8/2	0001	0700	7	Off Shift												
8/2	0700	2000	13	Division B												
8/2	2000	2400	4	Off Shift												
Vendor Rating					Govt. Rep. Name and Position - PRINT Steve Hampton, Div B											
<table border="1"> <tr> <th>Poor*</th> <th>Avg.</th> <th>Good</th> <th>Exc.</th> <th>N/A</th> </tr> <tr> <td></td> <td></td> <td></td> <td></td> <td></td> </tr> </table>					Poor*	Avg.	Good	Exc.	N/A						Govt. Rep. Signature <i>Steve Hampton</i>	
Poor*	Avg.	Good	Exc.	N/A												
Met Performance Expectations					Contractor Signature <i>James Russell</i>											
Equipment in Safe Working Condition					Date 08/02/16											
Operator Skill Level					Time 2000											
Operates Safely					CALFIRE 297 (Rev 3-2011)											
Operator's Cooperation Level																
Overall Performance																

* NOTE: Any rating of POOR requires an explanation in Comment Section.
 **Final evaluation or for more documentation, use an ICS Form 230 or equivalent.

Pink - Finance Blue - Home Unit HE Coordinator Yellow - Vendor White - Govt Representative



PUBLIC INFORMATION SECTION



Incident Information Public Information Line: (925) 872-8556

Status			
Mill Incident Start Date: 9-2-22 12:49 p.m.		Mountain Incident Start Date: 9-2-22 3:48 p.m.	
Total acres:	Containment:	Total acres:	Containment:
Cause: Under Investigation	Total Personnel:	Cause: Under Investigation	Total Personnel:

MEDIA – The California State Penal Code Section 409.5(d) allows the news media to enter scenes of disaster, riot or civil disturbance. Properly identified members of the news media should not be restricted from entering locations specified within the code. However, this does not include crime scenes, private property and does not imply that the news media may interfere with incident operations while they are in the areas of concern. More information can be found [here](#).



CAL FIRE SOCIAL MEDIA POLICY – When assigned to a CAL FIRE incident, you will adhere to the CAL FIRE Social Media Policy, Section 0691. You can find further information about the CAL FIRE Social Media Policy [here](#).



PHOTOGRAPHS AND VIDEOS OF INCIDENT – We are in a new era of media. Media no longer means news/broadcast industry, but now refers to anyone that has the capability to shoot video, photographs and post them onto social media sites in a matter of minutes. Unfortunately, we have seen some instances of photographs or videos that have depicted unsafe, unprofessional or embarrassing circumstances which are a serious breach of ethics. When this happens, it reflects poorly on all that are attached to this incident. Posting an inappropriate video, photo or blog comment could expose oneself to unwanted ramifications. It may be unsafe to shoot photos or video and a firefighter who is concentrating on a camera loses their situational awareness.

The Public Information Office would like copies of the video and pictures that you safely took while not in an emergency situation, fire suppression activity or in an overhead assignment. Bring your video and pictures to the Public Information trailer; they will be reviewed and possibly uploaded to our many CAL FIRE social media sites. Remember, we don't want photographs or videos that depict unsafe, unprofessional or embarrassing circumstances, which are a serious breach of ethics.



LOST AND FOUND – The Information Section will manage lost and found items for the incident.

MAIL SERVICE – The Information Section can assist you with sending and receiving mail.

Siskiyou County Fairgrounds
ATTN: Mill or Mountain Information
(Your Name and Resource)
1712 Fairlane Road
Yreka, CA 96097

PEER SUPPORT MESSAGE

Watch for the signs and symptoms of stress in yourself and the people around you. Some of the signs and symptoms you may be experiencing include, but are not limited to:

Irritability, lack of sleep, quick to anger, isolation, above average tobacco use, an increase in negative coping mechanisms such as excessive alcohol and/or substance abuse. You might experience lack of appetite, isolate yourself, or various other unexplained reactions to normal everyday events.



Peer Support Handouts

You may not be experiencing these symptoms now. However, you may find yourself experiencing them when you return to your home or Unit or have a co-worker who is. You may be triggered by a past event, that has impacted you, while assigned to future incidents. A sight, sound, smell, or touch could trigger a memory, affecting you now, but you are not sure why?

If you find yourself in this situation and need to talk to someone, please contact a peer support team member.

The peer support team is available on the incident for any peer support needs.

Examples of peer support needs are, but not limited to, understanding the science behind stress and reactions, assistance with professional or personal crisis, other behavioral health, and wellness impacts. Come see and ask us what we do and can provide.... We will gladly explain!

Stay Healthy, Stay Alert and Stay Strong!

TRAINING MESSAGE

If you are here on a Trainee status and have not checked in with the Training Specialist, you have till Monday at noon to do so.

As this incident comes to a close, please do not lose the opportunity to receive a Training Packet for a Type 1 Incident.

If you are demobing please bring the following with you to Training:

- ICS 225
- Performance Evaluation
- Taskbook Qualifications page, for those transitioning from Trainee to Qualified.

If you are a Trainee and are unable to get to base camp, please reach out to me via email, text, or phone.

We can get your Trainee Packet taken care of without you coming to Training.

Dottie.Shaw@fire.ca.gov

619-971-1701





DEMOBILIZATION PLAN
MILL CA-SKU-007568
MOUNTAIN CA-SKU-007586

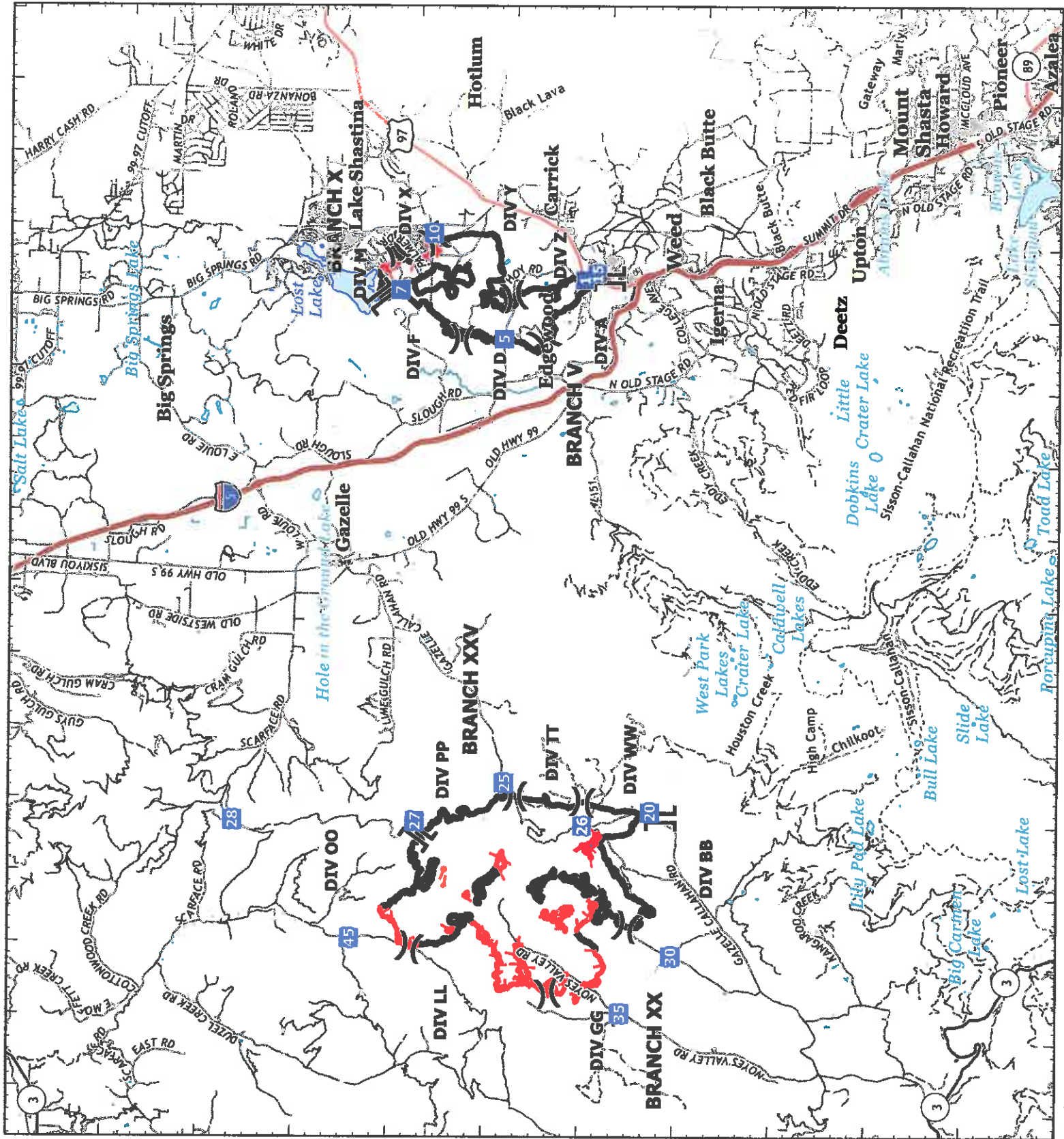


DEMOB PROCEDURES

- Check the demob list daily. You can find the demob list posted around camp or by utilizing the QR code on your IAP.
- Please report to demob only at your scheduled time.
- Only one person per resource is to report to demob.

- The Demob Unit will provide you with an ICS-221 check-out form.
- For the following units, Demob personnel will make positive contact to ensure you are clear for demobilization:
 - Supply Unit
 - Communications Unit
 - Accommodations Unit (If applicable)
- For the following units, you will report in person to complete your check-out:
 - Time Unit
 - Documentation Unit
 - Training Specialist (If applicable)
 - Ground Support Unit
- Return your completed ICS 221 to the Demob Unit and you will be advised of your status (released home, reassigned, etc.)

Greg Barnhart
Demobilization Unit Leader
CAL FIRE Incident Management Team 5





Transportation Map

Mountain Incident
CA-SKU-007586
Mill Incident
CA-SKU-007568
September 10, 2022

- Contained
- Uncontained
- Division Break
- Branch Break
- Drop Point

N

Miles
0 2 4

1:200,000
Datum: NAD 83

