

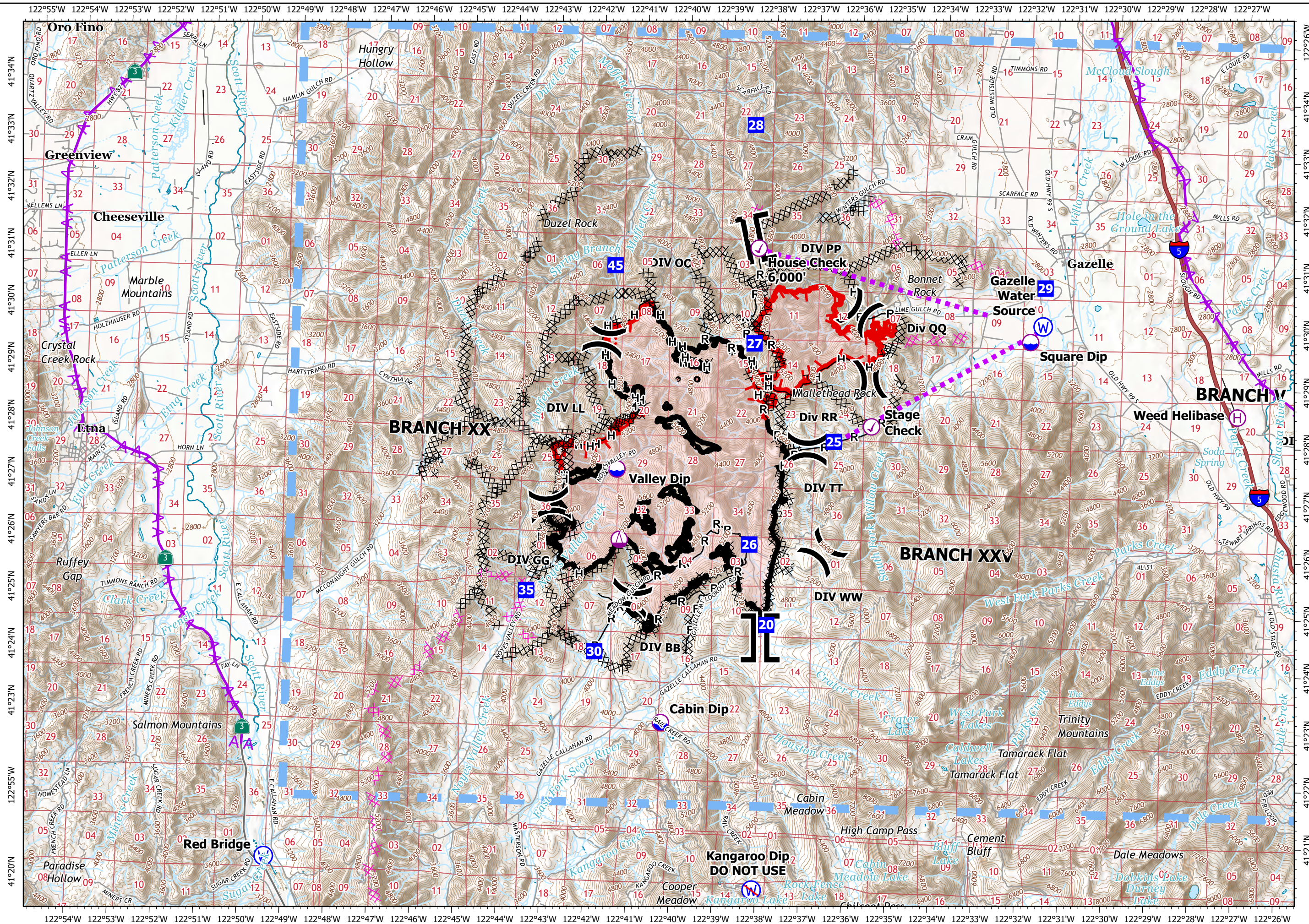
# Pilot Map

## Mountain Incident CA-SKU-007586 September 12, 2022

- Transmission Lines
- TFR
- Aviation Check Point
- Dip Site
- Helibase
- Sling Site
- Division Break
- Branch Break
- Drop Point
- Water Source
- Restricted Water Source
- Completed Dozer Line
- Completed Hand Line
- Completed Road as Line
- Planned Dozer Line
- Aviation Route
- Contained
- Uncontained
- Fire Perimeter



1:112,000  
Datum: NAD 83



Point	Latitude	Longitude
Cabin Dip	41° 22.935' N	122° 40.287' W
Square Dip	41° 29.760' N	122° 31.941' W
Valley Dip	41° 27.350' N	122° 41.461' W
Kangaroo Dip - DO NOT USE	41° 20.048' N	122° 38.078' W
DP-1	41° 26.424' N	122° 23.171' W
DP-5	41° 28.075' N	122° 24.863' W
DP-7	41° 30.276' N	122° 23.584' W
DP-10	41° 29.614' N	122° 21.992' W
DP-15	41° 26.162' N	122° 22.984' W
DP-20	41° 27.769' N	122° 37.197' W
DP-25	41° 24.696' N	122° 37.898' W
DP-26	41° 26.094' N	122° 38.342' W
DP-27	41° 29.615' N	122° 38.349' W
DP-28	41° 33.436' N	122° 38.458' W
DP-30	41° 24.150' N	122° 41.868' W
DP-35	41° 25.462' N	122° 43.394' W
Aviation Check Point	41° 28.210' N	122° 35.581' W
House Check 6,000'	41° 31.282' N	122° 38.304' W
Weed Helibase	41° 28.535' N	122° 27.097' W
Sling Site	41° 26.120' N	122° 41.361' W
Gazelle Water Source	41° 30.040' N	122° 31.661' W