

# INCIDENT ACTION PLAN

## MILL INCIDENT

CA-SKU-007568

## MOUNTAIN INCIDENT

CA-SKU-007586

Friday



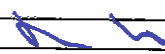
### OPERATIONAL PERIOD

9/9/2022 0700  
to  
9/10/2022 0700





## ORGANIZATION ASSIGNMENT LIST (ICS 203)


<b>1. Incident Name:</b> Mill / Mountain Incident		<b>2. Operational Period: Date From:</b> 9/9/2022 Time From: 0700		<b>Date To:</b> 9/10/2022 <b>Time To:</b> 0700	
<b>3. Incident Commander(s) and Command Staff:</b>			<b>7. Operation Section:</b>		
IC/UC's	Todd Hopkins	Operations	JC. Greenburg		
Deputy	David Wood	Deputy Operations	J. Macomb, C. Swensen (T)		
Safety Officer	Dan McNamara, Andrew Kibby	Night Ops	M. Ryan		
Information Officer	Suzi Brady	Staging Area			
Liaison Officer	Dave Pucci, Robert Reynolds (T)	<b>Branch</b>	<b>X</b>	<b>R. Valles (12)</b>	
Law Enforcement Liaison	Ben Moore, Josh Tindall	Division/Group	A / Z	K. Cummings	
<b>4. Agency/Organization Representatives:</b>			Division/Group	F S R	D. Denman
Agency/Organization	Name	Division/Group			
Siskiyou County SO	Jeremiah LaRue	Division/Group			
CAL OES	Patrick Titus	Division/Group			
USFS	Natalie Kelly	<b>Branch</b>	<b>XX</b>	<b>K. Swope</b>	
Pacific Power & Light	Tyler Averyt	Division/Group	BB / GG	B. Lee	
BLM	Garret Dunn	Division/Group	LL / OO	K. Mancebo, C. Cerwin (T)	
Lake Shastina PD	William Bullington	Division/Group			
Weed PD	Justin Mayberry	Division/Group			
CDCR	Jerry Leventon	Division/Group			
		<b>Branch</b>	<b>XXV</b>	<b>S. Pindell</b>	
		Division/Group	PP / TT / WW	T. England	
		Division/Group			
		Division/Group			
		Division/Group			
		<b>Branch</b>	<b>FSR</b>	<b>J. Scheid</b>	
		Division/Group	FSR 1		
<b>5. Planning Section:</b>			Division/Group	FSR 2	
Chief	Ryan Davis	Division/Group			
Deputy	Sean Griffis, Dana McCarroll (T)	Division/Group			
Resource Unit	Nick Pimlott, Robert Roland	Division/Group			
Situation Unit	Jim Day, Megan Scheeline	<b>Branch</b>			
Situation Unit Intel	Phillip SeLegue	Division/Group			
Documentation Unit	Michelle Schneider, Rochelle Frynire	Division/Group			
Demobilization Unit	Mike Dunkle, Ashley Sanza	Division/Group			
GISS	Peter Rowland	Division/Group			
FBAN	Troy Vellin	Division/Group			
IMET	Richard Thomson	<b>Air Operations Branch</b>	<b>Director:</b>	<b>Niko Matteoli</b>	
Training Tech Spec	Dottie Shaw	Air Support Group Supervisor	Josh Faulkner		
		Air Tactical Group Supervisor	Tim Schiffler		
<b>6. Logistics Section</b>			Helibase Manager	Matt Munson	
Chief	Brian Pottenger, Tim Fitzgerald				
Supply Unit	Mike Worford		<b>8. Finance/Administration Section:</b>		
Facilities Unit	Travis Heard		<b>Chief</b>	Tiffany Tracy, Matt Rea	
Ground Support Unit	Matt Bellows		<b>Time Unit</b>	Heather Constable (T)	
Communications Unit	Cory Costa, Scott Gamble (T)		<b>Procurement Unit</b>	Tammy Nolan	
Medical Unit	Josh Staley, Steve McGary		<b>Comp/Claims Unit</b>	Mark Walsh	
Food Unit Leader	Steve Chapin		<b>Cost Unit</b>	Mike Kennefic	
<b>Prepared By: Name:</b> Ryan Davis		<b>Position/Title:</b> PSC		<b>Signature:</b> 	
<b>ICS 203</b>		<b>Date/Time:</b> 9/8/2022 2300 hours			



# INCIDENT Weather Forecast



**FORECAST NO:** 5  
**PREDICTION FOR:** 24 hour shift  
**SHIFT DATE:** 9/9/22-9/10/22 (0700-0700)  
**FORECAST ISSUED:** 9/8/22 @ 1900

**NAME OF FIRE:** Mill and Mountain  
**UNIT:** CalFire  
**SIGNED:**   
 Rich Thompson Incident Meteorologist

**WEATHER DISCUSSION:** ...RED FLAG WARNING IN EFFECT UNTIL 900 PM...

Warmer and drier conditions will prevail across the incidents through the operational periods. Afternoon temperatures will top out in the mid 80s to mid 90s while relative humidity drops into the 15-25% range. Overnight humidity recovery will be poor. At the ridgetops, northeast to east winds will prevail through the evening with the winds shifting to the southeast and south tonight. At lower elevations, typical diurnal winds can be anticipated with gusts around 15 MPH in the afternoon hours. However, these lower elevation winds will be battling with the northeasterly winds at the ridges, so there could be some chaotic winds at lower elevations through the day.

Please note, the RED FLAG WARNING has been issued for the entire Fire Weather zone. However, critical fire weather conditions are not expected locally for either the Mill or Mountain Fires.

On Saturday, some slight cooling is anticipated although relative humidity will remain low. Southerly winds will be gusty on Saturday at all elevations. On Sunday, noticeably cooler conditions are anticipated with an associated increase in relative humidity. Southerly winds will continue across the fires.

**WEATHER FORECAST:**

**WEATHER:** Mostly clear.

**TEMPERATURES:** Max: 85-95.  
 Min: Mountain: 66-72. Mill: 58-64.

**HUMIDITY:** Min: 13-23%.  
 Max: Mountain 25-30%. Mill 35-45%.

**20 FT WINDS:**

**RIDGETOP -**

0700-2200: Northeast to east 4-8 MPH Gusts 12-15 MPH.  
 2200-0200: Southeast 4-8 MPH Gusts 10-15 MPH.  
 0200-0700: Southeast to south 5-10 MPH Gusts 12-18 MPH.

**SLOPE/VALLEY -**

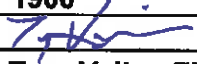
0700-1000: Variable 4-8 MPH.  
 1000-2000: Upvalley 4-8 MPH. Gusts 10-15 MPH.  
 2000-0700: Downslope/downvalley 4-8 MPH.

**STABILITY/MIXING HEIGHT:** Moderate instability. Mixing height 8000-10000 feet.

**OUTLOOK FOR SATURDAY:** Partly cloudy. High temperatures 83-93. Low temperatures 54-64. Min RH: 15-25%. Max RH: 30-50%. Ridgetop winds: Southeast to south 8-15 MPH with gusts 20-25 MPH. Slope/valley winds: typical diurnal winds with upcanyon gusts around 12-18 MPH in the afternoon.

**OUTLOOK FOR SUNDAY:** Partly cloudy. High temperatures 74-84. Low temperatures 52-62. Min RH: 25-40%. Max RH: 40-60%. Ridgetop winds: South to southwest 6-12 MPH with gusts 15-20 MPH. Slope/valley winds: typical diurnal winds with upcanyon gusts around 12-18 MPH in the afternoon.

## FIRE BEHAVIOR FORECAST

<b>FORECAST NUMBER:</b> 6	<b>TYPE OF FIRE:</b> WILDFIRE
<b>FIRE NAME:</b> Mill - Mountain	<b>OPERATIONAL PERIOD:</b> Sep 9, 2022, 24 HR
<b>DATE ISSUED:</b> Sep 8, 2022	<b>TIME ISSUED:</b> 1900
<b>UNIT:</b> CALFIRE SISKIYOU UNIT	<b>SIGNED:</b> 
<b>Typed/printed:</b> Troy Velin - FBAN	

### INPUTS

**WEATHER SUMMARY:**

SEE WEATHER INCIDENT FORECAST

### OUTPUTS

**FIRE BEHAVIOR****GENERAL:**

NFDRS- Energy Release Component is 64 and above the 97<sup>th</sup> percentile. BI – Burning Index is 46 also above the 97<sup>th</sup> percentile. 100hr FM 10%, 1000 hr FM 11%. LFM in Manzanita approaching critical at 85%. Annual grass is completely cured. The Mill fire is burning in annual grass, light to heavy brush and scattered high desert timber fuels. The Mountain fire is burning in annual grasses, light to heavy brush and scattered hardwood litter and timber litter. Fire area ranges from 2700' to 6000' elevation. On September 2<sup>nd</sup>, 2022, a Fuels and Fire Behavior advisory was issued for Northern California. Due to extreme drought, extremely dry fuels and extended periods of hot weather, fire behavior will be elevated for the near future.

**SPECIFIC:****Mill**

Winds this afternoon may affect isolated pockets of heat within the perimeter.

**Mountain**

The area of the Mountain fire is steep and broken. There are deep drainages and incontinous ridges. Recent field observations and IR data shows that most of the heat is interior of the line. There may still be areas of heat near lines or in areas that may compromise the line. Critically dry fuels and steep terrain will support growth outside of control lines.

**All Divisions**

- Interior pockets will continue to burn out
- Monitor for rollout
- Trees near the line may still pose a threat
- Stump holes, fire weakened trees, and underground root fires are numerous

**AIR OPERATIONS:**

Clear skies

### SAFETY

Establish decision points to help ensure that you are maintaining accurate situational awareness. Decision points need to be based on measurable factors such as time, geographical features, operational constraints, safety hazards, etc. As you approach a decision point, re-evaluate your situation and determine if a change in strategy or tactics is required. Pre-plan your alternatives and be prepared to communicate and implement them.

# Fuels and Fire Behavior Advisory

## Northern California

September 2<sup>nd</sup>, 2022



**Subject:** Potential for extreme fire behavior due to critically elevated fire danger indices, low live and dead fuel moistures, and very hot and dry conditions across much of northern California.

**Discussion:** An extended period of hot, dry weather with embedded periods of enhanced winds will impact Northern California. The elevated fire weather concerns with fuels reaching their yearly minimum moisture values will create conditions conducive to long range spotting, rapid fire growth, and high resistance to control.

**Difference from normal conditions:** The current values for Energy Release Component (ERC) are at or above the 90<sup>th</sup> percentile for the majority of Northern California, with live fuel moistures dropping to critical levels as herbaceous and woody fuels cure. These conditions will be exacerbated by a predicted heat wave, resulting in anomalous daytime highs with little relief in temperature or humidity recovery overnight. Some PSA's, may reach daily record ERC values, with all covered PSA's predicted to reach or exceed the 97<sup>th</sup> percentile for an extended period. The combination of extreme ERC's with high temperatures and poor overnight humidity recovery is highly correlated with extreme fire behavior in Northern California.

### Concerns to Firefighters and the Public:

- The advisory coincides with the Labor Day holiday weekend that is likely to result in increased outdoor recreation and visitor use to public lands across Northern California. The increase in public use carries an increased risk of fire starts as well as potential for evacuations of visitors/ recreational users in the event of a fire starting.
- Energy Release Component (ERC) in areas covered by this advisory are at or above the 90<sup>th</sup> percentile and are expected to approach or exceed the 97<sup>th</sup> percentile. **Anticipate increased spread rates, long range spotting, and active nighttime burning.**
- The combination of persistent drought, a building heat wave, and a very dry atmosphere will continue to decrease already low fuel moisture values:
  - 1000-hour fuel moistures are below average and approaching the 90<sup>th</sup> percentile,
  - Live woody fuel moisture in brush is near or slightly below average, making them readily available and will likely reach critical levels because of the forecasted hot, dry weather.
  - The above average herbaceous fuel load at low and mid elevations (below 5,000 ft.) is fully cured, with high elevation herbaceous fuels rapidly curing during the hot, dry forecast.
  - Higher than average surface fuel loading is present in areas that experienced winter snow and ice storms in the Coast Range and northern Sierra Nevada.

**Expect fires to ignite easier and spread faster. Do not expect fires to exhibit reduced fire behavior when entering areas of live fuels; anticipate increased spread rates and spotting.**

- Periods of enhanced winds are expected during the hot and dry period. Given the current and anticipated fuels conditions, increases in winds will make direct attack of any new starts difficult and may hamper use of aerial resources.
- Review the current [North Ops Outlooks](#) and [national fuels and fire behavior advisories](#).

### Mitigation Measures:

- Suppression actions need to be based on good anchor points, escape routes, and safety zones. **Remember LCES. Experienced lookouts are essential under these conditions.**
- Base all actions on current and expected behavior of the fire. **Augment initial attack resources as incident activity dictates**
- Fire managers should be aware of high use recreation and visitor sites in their area. **The holiday weekend will bring increased visitor use, increasing risk of starts during critical fire weather.**

**Area of Concern:** Northern California except for the following Predictive Service Areas: North Coast, Bay Marine, and west of Highway 101 in Mid-Coast to Mendocino.





# Mill/Mountain INCIDENT HEALTH AND SAFETY MESSAGE



**Maintain Situational Awareness!!!**

**INCIDENT** Mill/Mountain CA-SKU-007568/007586 | **DATE:** September 9, 2022 **TIME:** 0700-0700

### Major Hazards and Risks:

**HEAT – DRIVING - SNAGS- TERRAIN - RECEPTIVE FUELS - SNAGS**

**Situational Awareness:** Access your current situation constantly, maintain radio communication with your division, adjacent divisions, and monitor air-to-ground frequencies.

**Driving:** Drive defensively and make sure you have plenty of clearance when passing on narrow roads. There is no need to speed while going or returning from the fireline.

**Fatigue:** Take frequent nutrition and hydration breaks throughout the day. Hydrate with a 2 water to 1 electrolyte drink ratio on hot dry days. Monitor personnel for fatigue and plan accordingly with work assignments. Make sure you are taking care of your personnel as there are other incidents evolving throughout the state. If you are getting demobed, make sure you are well rested before departing.

**Steep slopes/rolling material/snags:** Watch your footing while hiking in steep terrain. Be careful of loose rolling debris. Maintain Situational Awareness while working around trees and snags.

**Line Construction:** Use Downhill Line Checklist (IRPG). Conduct thorough briefing for all personnel. Ensure LCES in place prior to engagement. Establish Safety Zones. Utilize Risk Management Process.

**COVID:** Maintain good hygiene and report any symptoms to supervisor.

**Environmental Hazards:** Watch for damaged propane tanks and other hazards around damaged structures. Wear appropriate PPE when overhauling structures.

### Lookouts, Communication, Escape routes, Safety zones

#### TAILGATE SAFETY

- **Accountability:** Supervisors know where their crews are at all times.
- **Hydration and Nutrition:** Monitor each other for proper hydration and nutrition.
- **Communication:** Everyone knows the comm plan and follows it.
- **Briefing:** Leaders intent is fully communicated, and safety briefing is provided.
- **Safety gear:** Everyone has the appropriate PPE and is using it.
- **LCES:** They are clear, understandable and made known to everyone.

#### Planning For Medical Emergencies

Supervisors and all firefighters need to Review your ICS 206 ask and be able to answer the following questions:

**What are we going to do if someone gets hurt?**

- Is there personnel and equipment available to assist?

**How will we get them out of here?**

- What is your best extraction and transport method? Road, helispot, hoist? Primary plan and contingency plan in place?

**How long will it take to get them to the hospital?**

- Will you request air or ground resources?
- Are helicopters able to fly?

Incident Safety Officer: Dan McNamara, SOF1





**Mill/Mountain Incidents CA-SKU-007568/007586  
RISK ANALYSIS (ICS 215a)**



DIV	HAZARDOUS ACTIONS/CONDITIONS	MITIGATIONS / WARNINGS / REMEDIES
ALL	FATIGUE/HEAT/DEHYDRATION	Be alert for signs of fatigue and take breaks as necessary. Monitor incoming resources for level of fatigue. Drink water before, during and after shifts, up to 1.5 gal. per shift. Be alert for signs of heat stress in yourself and others; Find shade when you can. Drink electrolyte drinks at a 2 water to 1 sport drink ratio.
ALL	COMPLACENCY	Don't underestimate the task at hand. Everyone should be briefed on the conditions and circumstances regarding their assignment. Stay focused on the task at hand. We know that there are other incidents going on in the state, but we need to be vigilant and finish this incident. Be alert while working along roadways.
ALL	DRIVING HAZARDS	Complete appropriate DOT daily vehicle inspection. <b>Slow Down!</b> Long travel times to the line, stay alert. Stop if fatigued. Drive defensively! Expect the unexpected around every curve. Drive with headlights and seatbelts on. Narrow roads with limited passing room. Expect roads to deteriorate over the shift.
ICP Ground Support	DEMOB	Watch out for pedestrian and vehicle congestion. Provide spotters when backing or driving in tight places. Monitor fatigue when traveling home. <b>Secure and stow gear and equipment within your vehicle.</b>
Mountain	AIRCRAFT OPERATIONS	Monitor air-to-ground frequency, they are your eyes in the sky. Use air-to-ground frequency to communicate with aircraft. Use clear, concise statements when directing aircraft. Clear the area for incoming water and retardant drops.
ALL	HEAVY EQUIPMENT	Watch for rolling material avoid working below heavy equipment. Monitor safe working distances provide adequate working space.
Mountain	LINE CONSTRUCTION	Ensure LCES in place prior to engagement. Establish adequate safety zones. Use Downhill Line Checklist. Follow "Look Up, Look Down, Look Around" procedures. Utilize Risk Management Process. Reference the IRPG.
ALL CAMP HOTELS	COVID 19	Wear a mask when applicable. Utilize hand sanitizer and wash hands frequently. Maintain social distancing. Disinfect apparatus and coolers frequently. Adhere to local, state and federal Covid-19 guidelines.
ALL	COMMUNICATIONS	Confirm correct tactical and command channel. No unassigned radio channels. Check your Air to Ground channel to make sure it is correct. Check your tactical frequency if you have moved branches or divisions.
ALL	HAZARD TREES/TREE FELLING SAFETY	Identify and isolate the area to provide for the safety of others. Flag and make proper notifications. Size up and mitigate concerns, put the tree fire out if possible! Work within your qualifications if considering felling a tree
ALL	ENVIRONMENTAL HAZARDS	Maintain situational awareness for illegal activity, Be aware of wild animals. (Bears, Mountain Lions, Bees, etc.) Bow hunting season is open near the Mountain fire area. Be aware of possible propane leaks and live wires in areas of damaged structures.
Incident Name: Mill/Mountain  ICS 215a		DATE PREPARED: Dan McNamara Safety:  OPERATIONAL PERIOD: September 9, 2022 0700-0700

CA-SKU-007568  
 OLD\_REQUEST\_NUMBER

MILL TO MOUNTAIN

CA-SKU-007586  
 NEW\_REQUEST\_NUMBER

C-2	STG - 92496		C-20
C-3	STG - 92546		C-31
C-33	STG - 9273G		C-34
C-6	STG - 91456		C-35
C-7	STG - 92586		C-36
C-8	CRW1 - TRUCKEE IHC		C-37
C-22	CRW1 - KLANATR IHC		C-38
E-1	DO22 - 9242L		E-117
E-10	DO22 - 9212L		E-118
E-2	DO22 - 9251L		E-119
E-3	DO22 - 9149L		E-120
E-3.2	DO22 - COLEMAN ENVIRONMENTAL		E-120.2
E-4	DO22 - 9221L		E-121
E-5	DO22 - 9146L		E-122
E-5.1	DO22 - TD1448		E-122.1
E-5.2	DO22 - DUNLAP FARMS		E-122.2
E-8	DO22 - 9278L		E-123
E-7	DO22 - TD1445		E-124
E-12	DO22 - SKINNERS ROADSIDE TRUCK REPAIR		E-125
E-14	DO22 - ERICSON CONSTRUCTION		E-126
E-22	STC - 9241C		E-127
E-24	STC - 9250C		E-128
E-28	STC - 9143C		E-129
E-29	STC - 1275C		E-130
E-271	W/T - SCOTT VALLEY - 1537		E-131
E-52	W/T - BERNARD DOWLING		E-132
E-59	W/T - MOLANE TRUCKING INC		E-133
E-6	DO22 - 1644		E-134
E-115	LOWBOY - SKINNERS ROADSIDE TRUCK REPAIR		E-135
E-161	DO22 - CEDAR STICK RESOURCE GROUP		E-136
E-162	DO22 - SCHREDER & BRANDT MFG INC		E-137
E-163	DO22 - R & H TRUCKING		E-138
E-164	DO22 - 46 TRAFFIC & CONSTRUCTION		E-139
E-165	DO22 - LET-ER-BUCK TRUCKING INC		E-140
E-166	DO22 - T & S		E-141
E-167	DO22 - ACT FAST NATIONWIDE		E-142
E-168	DO22 - EVANS BROTHERS		E-143
E-169	DO22 - LAMB UNLIMITED		E-144
E-170	DO22 - GILES EXCAVATING & PAVING		E-145
E-171	DO22 - SAM THOMPSON ENT		E-146
E-172	DO22 - ERIC SPRATT		E-147
E-173	DO22 - HIGH MOUNTAIN EXCAVATION		E-148
E-174	DO22 - HIGH MOUNTAIN EXCAVATION		E-149
E-175	DO22 - COTTONWOOD EQUIPMENT		E-150
E-21	STC - 9240C		E-151
E-241	LOWBOY - COTTONWOOD EQUIPMENT		E-152
E-117	LOWBOY - GENE ERICSON TRUCKING		E-153
E-240	LOWBOY - HIGH MOUNTAIN EXCAVATION		E-154
E-239	LOWBOY - HIGH MOUNTAIN EXCAVATION		E-155
E-238	LOWBOY - ERIC SPRATT		E-156
E-237	LOWBOY - SAM THOMPSON ENT		E-157
E-236	LOWBOY - GILES EXCAVATING & PAVING		E-158

CA-SKU-007568  
OLD REQUEST NUMBER

**MILL TO MOUNTAIN**

CA-SKU-007586  
NEW REQUEST NUMBER

E-202	DOZZ - SW MAINTENANCE	E-159
E-235	LOWBOY - GARY MCNARY	E-160
E-234	LOWBOY - EVANS BROTHERS	E-161
E-233	LOWBOY - ACT FAST NATIONWIDE	E-162
E-232	LOWBOY - T & S	E-163
E-231	LOWBOY - LEXER-BUCK TRUCKING	E-164
E-77	LOWBOY - COLEMAN ENVIRONMENTAL	E-165
E-230	LOWBOY - T & S	E-166
E-233	LOWBOY - DUNLAP FARMS	E-167
E-229	LOWBOY - R & H TRUCKING	E-168
E-228	LOWBOY - SCHREDER & BRANDT	E-169
E-227	LOWBOY - CEDAR STICK RESOURCE GROUP	E-170
E-179	W/T - AMERIVET	E-171
E-289	W/T - JACK L. MARTINEE	E-172
E-290	W/T - PRODLUMP AND EXCAVATING	E-173
E-251	W/T - H&H FEEDERS	E-174
E-36	W/T - DARRAH LOGGING	E-175
E-27	W/T - HARRIS EMERGENCY SERVICES	E-176
E-38	W/T - GENE ENIKSON	E-177
E-43	W/T - DUERR ENTERPRISES LLC	E-182
E-44	W/T - NORTH ZONE FALLERS INC	E-183
E-45	W/T - GRANT HANNA	E-184
E-46	W/T - GRANT HANNA	E-185
E-47	W/T - NORTH ZONE FALLERS INC	E-186
E-48	W/T - M. PETERS INC	E-187
E-49	W/T - M. PETERS OMC	E-188
E-50	W/T - M. PETERS INC	E-189
E-51	W/T - AMERIVET	E-190
E-53	W/T - MATTHEW JOHNSON	E-191
E-54	W/T - BERNARD DOWLING	E-192
E-55	W/T - DRISKELL TRUCKING LLC	E-193
E-66	ENGA - BLACKSTONE FORESTRY	E-195
E-67	ENGA - ALLIED WATER SERVICE INC	E-196
E-111	DOZZ - STF 52	E-197
E-57	W/T - BOB JOHNSON	E-198
E-60	W/T - JP & SONS	E-200
E-255	W/T - H & C CONSTRUCTION	E-201
E-256	W/T - ALAN'S WATER TRUCKS	E-202
E-214	LOWBOY - SW MAINTENANCE	E-203
E-13	DOZZ - DARRAH LOGGING	E-204
E-116	LOWBOY - DARRAH LOGGING	E-205
O-4	SWENSEN, CLINT	O-111
C-35	CRWA - SHASTA LAKE	C-43
C-23	CRWA - GLOWLERSBERG 1	C-44
C-4	STF - 9233IG	C-45
C-36	STF - 92626	C-46
O-15	DIVS - CERWIN, CODY	O-166
O-20	DIVS - SCHEPENS, DEREK	O-167
O-5	DIVS - LEE, BO	O-168
O-136	DIVS - MCCARTHY, NATHANIEL	O-169
O-143	DIVS - MCNEAL, TODD	O-170
E-94	DOZZ - 2642	E-220

CA-SKU-007568  
OLD REQUEST NUMBER

**MILL TO MOUNTAIN**

CA-SKU-007586  
NEW REQUEST NUMBER

E-106	ENG3 - CARNF E377	E-221
E-105	ENG3 - CARNF E377	E-222
E-104	ENG3 - CARNF E378	E-223
E-359	ENG3 - CASHF E361	E-224
E-360	ENG3 - CASHF E373	E-225
E-270	ENG3 - SCOTT VALLEY - 1518	E-226
E-128	STC - 2160C	E-227
E-90	STC - 4183C	E-228
E-34	STC - 4231C	E-229
E-63	STC - 9121C	E-230
E-23	STC - 9220 C	E-232
E-27	STC - 9230C	E-233
E-127	STC - OES - 2670C	E-234
E-35	STC - 2381C	E-235
E-129	STF - OES - 2883F	E-236
O-47	HEUB - MINE CRETE	O-172
O-351	FALM PVT RECK (WEST MT TIMBER)	O-173
O-27	OPBD SWOPE, KEITH	O-174
E-103	POTL - POTABLE - ALL AMERICAN EMERGENCY	E-238
E-131	TASK - OES - 5806	E-240
E-126	TASK - XSD - 6849	E-241
E-130	TASK - XFR - 5004	E-179
O-52	EMPF - LESLIE SCOTT	O-178
O-55	EMPF - KYLE SETTER	O-180
O-56	EMPF - KYLE POST	O-181
O-257	EMTF - BLANDFORD, SCOTT	O-182
O-261	EMTF - SMITH, SHANNON	O-183
O-262	EMTF - RODRIGUEZ, JOEL	O-184
O-17	EMTF - TRINGER, NOAH	O-176
O-51	DIV5 - COLEMAN, TROY	O-175
O-54	EMPF - PETERS, MATT	O-185
O-142	EMPF - RIMMAN, CHRISTOPHER	O-286
O-154	DIV5 - MACCOUN, DOUG	E-346
E-88	FOBS - SWEENEY, BRYCE	E-345
E-89	STC - 4180C	E-347
E-92	STC - OES - 0804C	C-47
C-5	STG - 9124G	E-350
E-69	ENG3 - CONTRACTING	E-349
E-93	DZRE - 2640	E-354
E-373	ENG2 - DRL 27	E-361
E-65	ENG3 - JB CONTRACTING	E-362
E-68	ENG4 - JD FORESTRY	C-48
C-34	CRW2 - PACIFIC OASIS	C-50
C-1	STG - 9222G	C-49
C-23	CRW1 - GLOWLERSBERG 4	C-55
C-26	CRWK - SALT CREEK KITCHEN	C-51
C-28	CRWC - GREENWOOD 1	C-52
C-29	CRWC - POMONA 4	C-53
C-24	CRWC - FORTUNA 2	C-54
C-25	CRWC - FRESNO 21	



# ASSIGNMENT LIST (ICS 204 WF)

CONTROLLED UNCLASSIFIED  
INFORMATION/BASIC

<b>1. Incident Name:</b> <b>Mill / Mountain Incident</b>	<b>2. Operational Period:</b> Date From: 09/09/22    Date To: 09/10/22 Time From: 0700    Time To: 0700	<b>3. Branch</b> <b>Division</b>  <b>X</b> <b>FSR</b>
<b>4. Operations Personnel:</b>		Page 1 of 1

Operations Section Chief: <b>JC. Greenburg</b> Branch Director: <b>R. Valles (12)</b> Division/Group Supervisor: <b>D. Denman</b>	Night Ops: <b>M. Ryan</b> Branch Safety: Air Attack: <b>Tim Schffler</b>
---	--

5. Resources Assigned:		** Resources Below in Bold are 12 Hour **					
Resource Identifier	ALS	LWD	Leader	Personnel	Request #	Hours	Reporting Location
DOZ PVT E-15 SHASTA BROWN					<b>E-15</b>	<b>0700-1900</b>	<b>DP 1</b>
DOZ PVT E-147 SPRATT			<b>ERIC SPRATT</b>	<b>4</b>	<b>E-147</b>	<b>0700-1900</b>	<b>DP 1</b>
DOZ PVT E-159 SW			<b>ANTOINO MELENDEZ</b>		<b>E-159</b>	<b>0700-1900</b>	<b>DP 1</b>
DOZ PVT E-203 SW			<b>ANTOINO MELENDEZ</b>	<b>2</b>	<b>E-203</b>	<b>0700-1900</b>	<b>DP 1</b>
DOZ PVT E-204 DARRAH			<b>BODIE KENLY</b>		<b>E-159</b>	<b>0700-1900</b>	<b>DP 1</b>
W/T PVT E-190 AMERIVET			<b>SHELLY HANSON</b>	<b>2</b>	<b>E-190</b>	<b>0700-1900</b>	<b>DP 1</b>
W/T PVT E-30035 PJ			<b>PAUL YOKOYAMA</b>	<b>2</b>	<b>E-30035</b>	<b>0700-1900</b>	<b>DP 1</b>
W/T PVT E-30036 WETTER			<b>MICHAEL SISSON</b>	<b>1</b>	<b>E-30036</b>	<b>0700-1900</b>	<b>DP 1</b>
MAST PVT E-30050 WARNER			<b>GARY WARNER</b>	<b>2</b>	<b>E-30050</b>	<b>0700-1900</b>	<b>DP 1</b>
EXC PVT E-30042 WD HEAVY			<b>ADAM DANIELS</b>	<b>2</b>	<b>E-30042</b>	<b>0700-1900</b>	<b>DP 1</b>
EXC PVT E-30043 M PETERS			<b>ROB JACKSON</b>	<b>1</b>	<b>E-30043</b>	<b>0700-1900</b>	<b>DP 1</b>
EXC PVT E-30048 MELO EXC			<b>MATT MELO</b>	<b>2</b>	<b>E-30048</b>	<b>0700-1900</b>	<b>DP 1</b>

**6. Work Assignments:**  
 Blade down dozer piles and berms.  
 Install waterbars as needed.  
 Clean dirt and debris from watercourses.  
 Water powdery roads.

**7. Special Instructions:**


8. Communications								
Name	Ch	Function	Rx Freq	Rx Tone	Tx Freq	Tx Tone	Mode	Notes
CDF C10	1	COMMAND	151.1900	(T8) 103.5	159.2250	(T2) 123.0	A	
NIFC T3	9	TACTICAL	168.6000	(T2) 123.0	168.6000	(T2) 123.0	A	FSR / MILL
A/G TAC	14	A/G TAC	169.1500		169.1500		A	A/G TAC
CALCORD	15	MEDICAL	156.0750	(T6) 156.7	156.0750	(T6) 156.7		
GUARD	16	AIR GUARD	168.6250	0.0	168.6250	(T1) 110.9	EMERGENC Y USE ONLY	

<b>9. Prepared by: Name:</b>	Robert Roland	RESL	Signature:
<b>ICS 204</b>	Date/Time: 9/8/2022	2200	Personnel Count: 18



# ASSIGNMENT LIST (ICS 204 WF)

CONTROLLED UNCLASSIFIED  
INFORMATION/BASIC

<b>1. Incident Name:</b> <b>Mill / Mountain Incident</b>		<b>2. Operational Period:</b> Date From: 09/09/22    Date To: 09/10/22 Time From: 0700    Time To: 0700		<b>3. Branch</b> <b>XX</b>		<b>Division</b> <b>BB / GG</b>			
<b>4. Operations Personnel:</b> Operations Section Chief: <b>JC. Greenburg</b> Branch Director: <b>K. Swope</b> Division/Group Supervisor: <b>B. Lee</b>				Night Ops: <b>M. Ryan</b> Branch Safety: Air Attack: <b>Tim Schiffler</b>					
<b>5. Resources Assigned:</b>		<b>** Resources Below in Bold are 12 Hour **</b>							
Resource Identifier	ALS	LWD	Leader	Personnel	Request #	Hours	Reporting Location		
STC XOR 1890C			<b>ROBERT STUART</b>	21	E-50	0700-0700	DP 35		
STC XTB 4230C			<b>SCOTT MEANS</b>	21	E-345	0700-0700	DP 35		
<b>T/F MTN 1</b>			<b>DAVID BALGONINI</b>	<b>15</b>	<b>O-70</b>	<b>0700-1900</b>	<b>DP 35</b>		
ENG SVF 1518			<b>NICK KRAUS</b>	3	E-226	0700-0700	DP 35		
<b>ENG PVT E-84 FIRE BRANDS 26</b>			<b>JAMES DOUGLAS</b>	3	<b>E-84</b>	<b>0700-1900</b>	<b>DP 35</b>		
<b>ENG PVT E-86 BIG STATE</b>			<b>CODY PLATZ</b>		<b>E-86</b>	<b>0700-1900</b>	<b>DP 35</b>		
<b>ENG PVT E-88 SEIBOLD</b>			<b>CHAUN WHITE</b>	3	<b>E-88</b>	<b>0700-1900</b>	<b>DP 35</b>		
<b>ENG PVT E-96 NATIONAL 332</b>			<b>ADAM PRICE</b>	3	<b>E-96</b>	<b>0700-1900</b>	<b>DP 35</b>		
<b>ENG PVT E-98 GONZALEZ</b>			<b>RORY BIGROPE</b>	3	<b>E-98</b>	<b>0700-1900</b>	<b>DP 35</b>		
STG HUU 9124G			<b>BRENT SANDERS</b>	31	C-5	0700-0700	DP 35		
STG LMU 9222G			<b>KEITH ETTER</b>		C-1	0700-0700	DP 35		
<b>CRW PVT PAC 16</b>			<b>LELAND DODDS</b>	20	<b>C-34</b>	<b>0700-1900</b>	<b>DP 35</b>		
<b>CRW PVT BMC 6</b>			<b>JUAN MORENO</b>	1	<b>C-40</b>	<b>0700-1900</b>	<b>DP 35</b>		
<b>CRW PVT BMC 7</b>			<b>JOSE GARCIA</b>	20	<b>C-41</b>	<b>0700-1900</b>	<b>DP 35</b>		
DOZ PVT E-26 NORTH					E-26	0700-0700	DP 35		
W/T PVT E-25 HD FIRE			<b>ERIK SKIDMORE</b>	1	E-25	0700-0700	DP 35		
W/T PVT E-54 GARR			<b>TODD GARR</b>	2	E-54	0700-0700	DP 35		
W/T PVT E-55 DC WATER			<b>ZEPH FOSTER</b>	2	E-55	0700-0700	DP 35		
<b>6. Work Assignments:</b> Hold fire in planned lines. Mop up 300 feet or 100%. Pull hose lays. Back haul garbage / hose / water.									
<b>7. Special Instructions:</b> Ambulance 102 will be available during the day shift 0800-2000 hours. Ambulance 103 will be available during the night shift 2000-0800 hours. MTC with UTV available in Branch XX. T/F MTN 1 resources- E-81, E-82, E-90, E-92, E-93, E-95.									
<b>8. Communications</b>									
Name	Ch	Function	Rx Freq	Rx Tone	Tx Freq	Tx Tone	Mode	Notes	
CDF C10	1	COMMAND	151.1900	(T8) 103.5	159.2250	(T2) 123.0	A		
CDF T27	4	TACTICAL	159.3075	(T16) 192.8	159.3075	(T16) 192.8	A		
A/G TAC	14	A/G TAC	169.1500		169.1500		A	A/G TAC	
CALCORD	15	MEDICAL	156.0750	(T6) 156.7	156.0750	(T6) 156.7			
GUARD	16	AIR GUARD	168.6250	0.0	168.6250	(T1) 110.9	EMERGENC Y USE ONLY		
<b>9. Prepared by: Name:</b>		Robert Roland			RESL			Signature: 	
ICS 204		Date/Time: 9/8/2022 2200			Personnel Count: 149				

NIMS IAP

CONTROLLED UNCLASSIFIED INFORMATION/BASIC

# ASSIGNMENT LIST (ICS 204 WF)

CONTROLLED UNCLASSIFIED  
INFORMATION/BASIC

<b>1. Incident Name:</b> <b>Mill / Mountain Incident</b>	<b>2. Operational Period:</b> Date From: 09/09/22    Date To: 09/10/22 Time From: 0700    Time To: 0700	<b>3. Branch</b> <b>Division</b> <b>XX</b> <b>BB / GG</b>
<b>4. Operations Personnel:</b> Operations Section Chief: <b>JC. Greenburg</b> Branch Director: <b>K. Swope</b> Division/Group Supervisor: <b>B. Lee</b>		Page 2 of 2
		Night Ops: <b>M. Ryan</b> Branch Safety: Air Attack: <b>Tim Schiffler</b>

5. Resources Assigned:		** Resources Below in Bold are 12 Hour **					
Resource Identifier	ALS	LWD	Leader	Personnel	Request #	Hours	Reporting Location
W/T PVT E-60 LARSEN			RON LARSON	2	E-60	0700-0700	DP 35
W/T PVT E-61 AMERICAN			BOB LOWE	2	E-61	0700-0700	DP 35
W/T PVT E-62 AMERICAN			ROB LOWE	2	E-62	0700-0700	DP 35
HEQB ASMUS							DP 35
FALM PVT O-173 KECK				1	<b>O-173</b>	<b>0700-1900</b>	<b>DP 35</b>
FEMT RODRIGUEZ			JOEL RODRIGUEZ	1	O-262	0700-0700	DP 35
FEMT THINGER			VINCENT THINGER	1	O-263	0700-0700	DP 35

**6. Work Assignments:**  
 Hold fire in planned lines.  
 Mop up 300 feet or 100%.  
 Pull hose lays.  
 Back haul garbage / hose / water.

**7. Special Instructions:**  
 Ambulance 102 will be available during the day shift 0800-2000 hours.  
 Ambulance 103 will be available during the night shift 2000-0800 hours.  
 MTC with UTV available in Branch XX.  
 T/F MTN 1 resources- E-81, E-82, E-90, E-92, E-93, E-95.

**8. Communications**


Name	Ch	Function	Rx Freq	Rx Tone	Tx Freq	Tx Tone	Mode	Notes
CDF C10	1	COMMAND	151.1900	(T8) 103.5	159.2250	(T2) 123.0	A	
CDF T27	4	TACTICAL	159.3075	(T16) 192.8	159.3075	(T16) 192.8	A	
A/G TAC	14	A/G TAC	169.1500		169.1500		A	A/G TAC
CALCORD	15	MEDICAL	156.0750	(T6) 156.7	156.0750	(T6) 156.7		
GUARD	16	AIR GUARD	168.6250	0.0	168.6250	(T1) 110.9	EMERGENC Y USE ONLY	

**9. Prepared by: Name:** Robert Roland    RESL    Signature:

ICS 204    Date/Time: 9/8/2022    2200    Personnel Count: 9

# ASSIGNMENT LIST (ICS 204 WF)

CONTROLLED UNCLASSIFIED  
INFORMATION/BASIC

<b>1. Incident Name:</b> <b>Mill / Mountain Incident</b>		<b>2. Operational Period:</b> Date From: 09/09/22    Date To: 09/10/22 Time From: 0700    Time To: 0700				<b>3. Branch</b> <b>XX</b>		<b>Division</b> <b>LL / OO</b>	
<b>4. Operations Personnel:</b> Operations Section Chief: <b>JC. Greenburg</b> Branch Director: <b>K. Swope</b> Division/Group Supervisor: <b>K. Mancebo, C. Cerwin (T)</b>						Night Ops: <b>M. Ryan</b> Branch Safety: Air Attack: <b>Tim Schiffer</b>			
<b>5. Resources Assigned:</b>						<b>** Resources Below in Bold are 12 Hour **</b>			
Resource Identifier	ALS	LWD	Leader	Personnel	Request #	Hours	Reporting Location		
STC MEU 9110C			ALEX LEONARD	18	E-49	0700-0700	Old Mill Site		
STC SHU 9240C			CORADO REGINATTO	16	E-151	0700-0700	Old Mill Site		
STC XSJ 4181C			ROBERT MOLINARO	19	E-228	0700-0700	Old Mill Site		
ENG NMSNF E651			ANDREW VALDEZ	4	E-83	0700-1900	Old Mill Site		
ENG PVT E-65 CONTRACT			CHRIS MCANDREW	3	E-65	0700-1900	Old Mill Site		
ENG PVT E-68 JD FORESTRY 02			JAIMIE LOCKE	3	E-68	0700-1900	Old Mill Site		
ENG PVT E-87 XTREME			CAMPANSANO		E-87	0700-1900	Old Mill Site		
ENG PVT E-196 ALLIED			JOHN KNIGHT	3	E-196	0700-1900	Old Mill Site		
ENG PVT E-350 J3 CONTRACT			BEN PERRY	3	E-350	0700-1900	Old Mill Site		
STG MEU 9115G			JAY MCNULTY	33	C-14	0700-0700	Old Mill Site		
STG HUU 9126G			DERIK RICKSON	30	C-16	0700-0700	Old Mill Site		
STG SHU 9244G			BENJAMIN POWELL	36	C-10	0700-0700	Old Mill Site		
STG SKU 9262G			JEFF HOFFMAN	31	C-46	0700-0700	Old Mill Site		
CRW1 SIK1						0700-0700	Old Mill Site		
CRW PVT BMC 8			IGNACIO PEREZ	20	C-42	0700-1900	Old Mill Site		
W/T XSK 1537 SVF			STEVE POLING	1	E-131	0700-1900	Old Mill Site		
W/T PVT E-16 ROLL'N ROCK			JUSTIN GRAY	2	E-16	0700-0700	Old Mill Site		
W/T PVT E-22 TRINITY			ROGER BLANCETT	2	E-22	0700-0700	Old Mill Site		
<b>6. Work Assignments:</b> Fall hazard trees. Mop up 300 feet or 100%. Back haul garbage / hose / water.									
<b>7. Special Instructions:</b> Ambulance 102 will be available during the day shift 0800-2000 hours. Ambulance 103 will be available during the night shift 2000-0800 hours. MTC with UTV available in Branch XX.									
<b>8. Communications</b>									
Name	Ch	Function	Rx Freq	Rx Tone	Tx Freq	Tx Tone	Mode	Notes	
CDF C10	1	COMMAND	151.1900	(T8) 103.5	159.2250	(T2) 123.0	A		
CDF T28	5	TACTICAL	151.1825	(T16) 192.8	151.1825	(T16) 192.8	A		
A/G TAC	14	A/G TAC	169.1500		169.1500		A	A/G TAC	
CALCORD	15	MEDICAL	156.0750	(T6) 156.7	156.0750	(T6) 156.7			
GUARD	16	AIR GUARD	168.6250	0.0	168.6250	(T1) 110.9	EMERGENCY USE ONLY		
<b>9. Prepared by: Name:</b>			Robert Roland			RESL		Signature: 	
<b>ICS 204</b>		Date/Time: 9/8/2022			2200		Personnel Count: 224		

NIMS IAP

CONTROLLED UNCLASSIFIED INFORMATION/BASIC

# ASSIGNMENT LIST (ICS 204 WF)

CONTROLLED UNCLASSIFIED  
INFORMATION/BASIC

<b>1. Incident Name:</b> <b>Mill / Mountain Incident</b>	<b>2. Operational Period:</b> Date From: 09/09/22    Date To: 09/10/22 Time From: 0700    Time To: 0700	<b>3. Branch</b> <b>Division</b> <b>XX</b> <b>LL / OO</b>
---	---	--

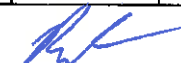
<b>4. Operations Personnel:</b>		<b>Page 2 of 3</b>
Operations Section Chief: <b>JC. Greenburg</b> Branch Director: <b>K. Swope</b> Division/Group Supervisor: <b>K. Mancebo, C. Cerwin (T)</b>	Night Ops: <b>M. Ryan</b> Branch Safety: Air Attack: <b>Tim Schiffler</b>	

<b>5. Resources Assigned:</b>		** Resources Below in Bold are 12 Hour **					
Resource Identifier	ALS	LWD	Leader	Personnel	Request #	Hours	Reporting Location
W/T PVT E-24 HD FIRE			<b>DERRIN HOWELL</b>	2	E-24	0700-0700	Old Mill Site
W/T PVT E-52 T&S			<b>JORDAN PARLETT</b>	2	E- 52	0700-0700	Old Mill Site
W/T PVT E-53 T&S			<b>TALLON CHATHAM</b>	2	E-53	0700-0700	Old Mill Site
W/T PVT E-56 WALTON			<b>RICK WALTON</b>	2	E-56	0700-0700	Old Mill Site
W/T PVT E-57 WILLMORE			<b>BILLY WOOTEN</b>	2	E-57	0700-0700	Old Mill Site
W/T PVT E-58 WILLMORE			<b>MICHELLE ANDERSON</b>	2	E-58	0700-0700	Old Mill Site
W/T PVT E-73 Q EQUIP			<b>MARIO QUEZADA</b>	2	E-73	0700-0700	Old Mill Site
W/T PVT E-119 FIVE STAR			<b>ASA BENNETT</b>	2	E-119	0700-0700	Old Mill Site
W/T PVT E-176 HARRIS			<b>STEVE SNOW</b>	2	E-176	0700-0700	Old Mill Site
W/T PVT E-183 NORTHZONE			<b>DAVE JONES</b>	2	E-183	0700-0700	Old Mill Site
W/T PVT E-184 GRANT			<b>KEN KELLY</b>	2	E-184	0700-0700	Old Mill Site
TFLD HARKER			<b>DANIEL HARKER</b>	1	O-69	0700-0700	Old Mill Site
HEQB SHIERS			<b>DUANE SHIERS</b>	1	O-40	0700-0700	Old Mill Site
HEQB DVORIN			<b>MARSHALL DVORIN</b>	1	O-58	0700-0700	Old Mill Site
HEQB CRETE			<b>MIKE CRETE</b>	1	O-172	0700-0700	Old Mill Site
FALM O-33 BUNDYS					<b>O-33</b>	<b>0700-1900</b>	<b>Old Mill Site</b>
FALM O-34 BUNDYS					<b>O-34</b>	<b>0700-1900</b>	<b>Old Mill Site</b>
FALM O-353 BUNDYS					<b>O-353</b>	<b>0700-1900</b>	<b>Old Mill Site</b>

**6. Work Assignments:**  
 Fall hazard trees.  
 Mop up 300 feet or 100%.  
 Back haul garbage / hose / water.

**7. Special Instructions:**  
 Ambulance 102 will be available during the day shift 0800-2000 hours.  
 Ambulance 103 will be available during the night shift 2000-0800 hours.  
 MTC with UTV available in Branch XX.

<b>8. Communications</b>								
Name	Ch	Function	Rx Freq	Rx Tone	Tx Freq	Tx Tone	Mode	Notes
CDF C10	1	COMMAND	151.1900	(T8) 103.5	159.2250	(T2) 123.0	A	
CDF T28	5	TACTICAL	151.1825	(T16) 192.8	151.1825	(T16) 192.8	A	
A/G TAC	14	A/G TAC	169.1500		169.1500		A	A/G TAC
CALCORD	15	MEDICAL	156.0750	(T6) 156.7	156.0750	(T6) 156.7		
GUARD	16	AIR GUARD	168.6250	0.0	168.6250	(T1) 110.9	EMERGENC Y USE ONLY	

**9. Prepared by: Name:** Robert Roland    RESL    Signature: 

**ICS 204**    Date/Time: 9/8/2022    2200    Personnel Count: 26

# ASSIGNMENT LIST (ICS 204 WF)

CONTROLLED UNCLASSIFIED  
INFORMATION//BASIC

<b>1. Incident Name:</b>	<b>2. Operational Period:</b>	<b>3. Branch</b>	<b>Division</b>
<b>Mill / Mountain Incident</b>	Date From: 09/09/22     Date To: 09/10/22 Time From: 0700     Time To: 0700	<b>XX</b>	<b>LL / OO</b>

<b>4. Operations Personnel:</b>		Page 3 of 3	
Operations Section Chief: <b>JC. Greenburg</b>	Night Ops: <b>M. Ryan</b>		
Branch Director: <b>K. Swope</b>	Branch Safety:		
Division/Group Supervisor: <b>K. Mancebo, C. Cerwin (T)</b>	Air Attack: <b>Tim Schiffler</b>		

<b>5. Resources Assigned:</b>		<b>** Resources Below in Bold are 12 Hour **</b>					
Resource Identifier	ALS	LWD	Leader	Personnel	Request #	Hours	Reporting Location
FEMT SMITH			SHANNON M SMITH	1	O-261	0700-0700	Old Mill Site
FEMT PUEBLA (T)			CHRISTIAN PUEBLA	1	O-258	0700-0700	Old Mill Site

**6. Work Assignments:**

Fall hazard trees.  
Mop up 300 feet or 100%.  
Back haul garbage / hose / water.

**7. Special Instructions:**

Ambulance 102 will be available during the day shift 0800-2000 hours.  
Ambulance 103 will be available during the night shift 2000-0800 hours.  
MTC with UTV available in Branch XX.

**8. Communications**

Name	Ch	Function	Rx Freq	Rx Tone	Tx Freq	Tx Tone	Mode	Notes
CDF C10	1	COMMAND	151.1900	(T8) 103.5	159.2250	(T2) 123.0	A	
CDF T28	5	TACTICAL	151.1825	(T16) 192.8	151.1825	(T16) 192.8	A	
A/G TAC	14	A/G TAC	169.1500		169.1500		A	A/G TAC
CALCORD	15	MEDICAL	156.0750	(T6) 156.7	156.0750	(T6) 156.7		
GUARD	16	AIR GUARD	168.6250	0.0	168.6250	(T1) 110.9	EMERGENC Y USE ONLY	

**9. Prepared by: Name:**                    Robert Roland                    RESL                    Signature:

**ICS 204**                    Date/Time: 9/8/2022     2200                    Personnel Count: **2**

# ASSIGNMENT LIST (ICS 204 WF)

CONTROLLED UNCLASSIFIED  
INFORMATION/BASIC

<b>1. Incident Name:</b> <b>Mill / Mountain Incident</b>	<b>2. Operational Period:</b> Date From: 09/09/22    Date To: 09/10/22 Time From: 0700    Time To: 0700	<b>3. Branch</b> <b>Division</b> <b>XXV</b> <b>PP / TT / WW</b>
<b>4. Operations Personnel:</b>		Page 1 of 1

Operations Section Chief: <b>JC. Greenburg</b> Branch Director: <b>S. Pindell</b> Division/Group Supervisor: <b>T. England</b>	Night Ops: <b>M. Ryan</b> Branch Safety: Air Attack: <b>Tim Schiffler</b>
--	---

5. Resources Assigned:      ** Resources Below in Bold are 12 Hour **							
Resource Identifier	ALS	LWD	Leader	Personnel	Request #	Hours	DP 25
STF XSM 2861F			<b>JEFF THRONE</b>	19	E-236	0700-0700	DP 25
<b>ENG KNF 357</b>			<b>ROBERT HANLEY</b>	<b>6</b>	<b>E-221</b>	<b>0700-1900</b>	<b>DP 25</b>
<b>ENG PVT E-85 TIMBERLINE</b>			<b>ERIK BRINK</b>	<b>3</b>	<b>E-85</b>	<b>0700-1900</b>	<b>DP 25</b>
<b>ENG PVT E-91 MOUNTAIN CAMEL</b>			<b>ANNA WILDGUN</b>	<b>3</b>	<b>E-91</b>	<b>0700-1900</b>	<b>DP 25</b>
<b>ENG PVT E-92 ROCKY MOUNTAIN</b>					<b>E-92</b>	<b>0700-1900</b>	<b>DP 25</b>
<b>ENG PVT E-195 BLACKSTONE</b>			<b>TYLER STEVENSON</b>	<b>3</b>	<b>E-195</b>	<b>0700-1900</b>	<b>DP 25</b>
<b>CRW PVT BMC 5</b>			<b>PLUTARCO MORENC</b>	<b>20</b>	<b>C-39</b>	<b>0700-1900</b>	<b>DP 25</b>
W/T PVT E-23 TRINITY			CLAYTON HOWARD	2	E-23	0700-0700	DP 25
<b>W/T PVT E-64 CONVERSE</b>			<b>HARRISON GARR</b>	<b>2</b>	<b>E-64</b>	<b>0700-1900</b>	<b>DP 25</b>

**6. Work Assignments:**  
 Fall hazard trees.  
 Mop up 300 feet or 100%.  
 Back haul garbage / hose / water.  
 Patrol.

**7. Special Instructions:**  
 Ambulance 102 will be available during the day shift 0800-2000 hours.  
 Ambulance 103 will be available during the night shift 2000-0800 hours.  
 MTC with UTV available in Branch XX.

**8. Communications**

Name	Ch	Function	Rx Freq	Rx Tone	Tx Freq	Tx Tone	Mode	Notes
CDF C10	1	COMMAND	151.1900	(T8) 103.5	159.2250	(T2) 123.0	A	
CDF T31	6	TACTICAL	159.3825	(T16) 192.8	159.3825	(T16) 192.8	A	
A/G TAC	14	A/G TAC	169.1500		169.1500		A	A/G TAC
CALCORD	15	MEDICAL	156.0750	(T6) 156.7	156.0750	(T6) 156.7		
GUARD	16	AIR GUARD	168.6250	0.0	168.6250	(T1) 110.9	EMERGENC Y USE ONLY	

**9. Prepared by: Name:**      Robert Roland      RESL      Signature:

ICS 204      Date/Time: 9/8/2022    2200      Personnel Count: 58



# ASSIGNMENT LIST (ICS 204 WF)

CONTROLLED UNCLASSIFIED  
INFORMATION/BASIC

<b>1. Incident Name:</b> <b>Mill / Mountain Incident</b>	<b>2. Operational Period:</b> Date From: 09/09/22    Date To: 09/10/22 Time From: 0700    Time To: 0700	<b>3. Branch</b> <b>Division</b> <b>FSR</b> <b>FSR 1</b>
<b>4. Operations Personnel:</b>		Page 1 of 2

Operations Section Chief: <b>JC. Greenburg</b> Branch Director: <b>J. Scheid</b> Division/Group Supervisor:	Night Ops: <b>M. Ryan</b> Branch Safety: Air Attack: <b>Tim Schiffler</b>
---	---

5. Resources Assigned:	** Resources Below in Bold are 12 Hour **						
Resource Identifier	ALS	LWD	Leader	Personnel	Request #	Hours	Reporting Location
ENG PVT E-89 EMBER 68			<b>CLAEB PARKER</b>	3	<b>E-89</b>	<b>0700-1900</b>	<b>DP 25</b>
ENG PVT E-94 KS CONTRACTING			<b>KEN SPACHT</b>	3	<b>E-94</b>	<b>0700-1900</b>	<b>DP 25</b>
DOZ PVT E-28 EVANS					<b>E-28</b>	<b>0700-1900</b>	<b>DP 25</b>
DOZ PVT E-29 MORGAN					<b>E-29</b>	<b>0700-1900</b>	<b>DP 25</b>
DOZ PVT E-31 JOHNSON					<b>E-31</b>	<b>0700-1900</b>	<b>DP 25</b>
DOZ PVT E-33 ARCHI					<b>E-33</b>	<b>0700-1900</b>	<b>DP 25</b>
DOZ PVT E-34 BAR G			<b>JAMES ROSS</b>		<b>E-34</b>	<b>0700-1900</b>	<b>DP 25</b>
DOZ PVT E-142 ACT			<b>STEVE HAGSTROM</b>	2	<b>E-142</b>	<b>0700-1900</b>	<b>DP 25</b>
DOZ PVT E-143 EVANS			<b>TOM EVANS</b>		<b>E-143</b>	<b>0700-1900</b>	<b>DP 25</b>
DOZ PVT E-148 HIGH			<b>MICHAEL HENSON</b>	4	<b>E-148</b>	<b>0700-1900</b>	<b>DP 25</b>
DOZ PVT E-149 HIGH			<b>TRAVIS BUNTING</b>	4	<b>E-149</b>	<b>0700-1900</b>	<b>DP 25</b>
W/T PVT E-21 ANDERSON			<b>JACK ANDERSON</b>	2	<b>E-21</b>	<b>0700-1900</b>	<b>DP 25</b>
W/T PVT E-63 CONVERSE			<b>STEVE SCHEPPS</b>	2	<b>E-63</b>	<b>0700-1900</b>	<b>DP 25</b>
W/T PVT E-72 ALANS			<b>RICKY LEGUE</b>	1	<b>E-72</b>	<b>0700-1900</b>	<b>DP 25</b>
W/T PVT E-111 BLK KNIGHT			<b>ELLEN SCHAAR</b>		<b>E-111</b>	<b>0700-1900</b>	<b>DP 25</b>
W/T PVT E-112 BLK KNIGHT			<b>DUSTIN SCHAAR</b>		<b>E-112</b>	<b>0700-1900</b>	<b>DP 25</b>
W/T PVT E-173 W/T P DUMP 7			<b>MIKÉ SEABORN</b>		<b>E-173</b>	<b>0700-1900</b>	<b>DP 25</b>
HEQB CRANDELL			<b>KEVIN CRANDELL</b>	1	<b>O-223</b>	<b>0700-1900</b>	<b>DP 25</b>

**6. Work Assignments:**  
 Assess for suppression repair needs.  
 Conduct suppression repair operations.

**7. Special Instructions:**

**8. Communications**

Name	Ch	Function	Rx Freq	Rx Tone	Tx Freq	Tx Tone	Mode	Notes
CDF C10	1	COMMAND	151.1900	(T8) 103.5	159.2250	(T2) 123.0	A	
CDF T32	7	TACTICAL	151.2425	(T16) 192.8	151.2425	(T16) 192.8	A	FSR 1 & FSR 2 / MOUNTAIN
A/G TAC	14	A/G TAC	169.1500		169.1500		A	A/G TAC
CALCORD	15	MEDICAL	156.0750	(T6) 156.7	156.0750	(T6) 156.7		
GUARD	16	AIR GUARD	168.6250	0.0	168.6250	(T1) 110.9	EMERGENCY USE ONLY	

**9. Prepared by: Name:** Robert Roland    RESL    Signature:

**ICS 204**    Date/Time: 9/8/2022 2200    Personnel Count: 22

### ASSIGNMENT LIST (ICS 204 WF)

CONTROLLED UNCLASSIFIED  
INFORMATION/BASIC

<b>1. Incident Name:</b> <p style="text-align: center;"><b>Mill / Mountain Incident</b></p>	<b>2. Operational Period:</b> Date From: 09/09/22    Date To: 09/10/22 Time From: 0700    Time To: 0700	<b>3. Branch                                  Division</b> <p style="text-align: center;"><b>FSR                                  FSR 1</b></p>
--	---	--

<b>4. Operations Personnel:</b>		<b>Page 2 of 2</b>
Operations Section Chief: <b>JC. Greenburg</b> Branch Director: <b>J. Scheid</b> Division/Group Supervisor:	Night Ops: <b>M. Ryan</b> Branch Safety: Air Attack: <b>Tim Schiffler</b>	

<b>5. Resources Assigned:</b>							
<b>** Resources Below In Bold are 12 Hour **</b>							
Resource Identifier	ALS	LWD	Leader	Personnel	Request #	Hours	Reporting Location
<b>HEQB LOVE</b>			<b>CHRISTOPHER LOVE</b>	<b>1</b>	<b>O-50</b>	<b>0700-1900</b>	<b>DP 25</b>
<b>HEQB O'LEARY</b>			<b>PATRICK O'LEARY</b>		<b>O-56</b>	<b>0700-1900</b>	<b>DP 25</b>
<b>FALM PVT O-352 TREE WORX</b>			<b>SEAN MURRAY</b>	<b>2</b>	<b>O-352</b>	<b>0700-1900</b>	<b>DP 25</b>

**6. Work Assignments:**  
Assess for suppression repair needs.  
Conduct suppression repair operations.

**7. Special Instructions:**

<b>8. Communications</b>								
Name	Ch	Function	Rx Freq	Rx Tone	Tx Freq	Tx Tone	Mode	Notes
CDF C10	1	COMMAND	151.1900	(T8) 103.5	159.2250	(T2) 123.0	A	
CDF T32	7	TACTICAL	151.2425	(T16) 192.8	151.2425	(T16) 192.8	A	FSR 1 & FSR 2 / MOUNTAIN
A/G TAC	14	A/G TAC	169.1500		169.1500		A	A/G TAC
CALCORD	15	MEDICAL	156.0750	(T6) 156.7	156.0750	(T6) 156.7		
GUARD	16	AIR GUARD	168.6250	0.0	168.6250	(T1) 110.9	EMERGENCY USE ONLY	

**9. Prepared by: Name:**                  Robert Roland                                  RESL                                  Signature: 

ICS 204	Date/Time: 9/8/2022    2200	Personnel Count: 3
---------	-----------------------------	--------------------

NIMS IAP

CONTROLLED UNCLASSIFIED INFORMATION/BASIC

# ASSIGNMENT LIST (ICS 204 WF)

CONTROLLED UNCLASSIFIED  
INFORMATION//BASIC

<b>1. Incident Name:</b> <b>Mill / Mountain Incident</b>	<b>2. Operational Period:</b> #ERROR! 09/09/22 #ERROR! 09/10/22 Time From: 0700 Time To: 0700	<b>3. Branch</b> <b>Division</b>  <b>X</b> <b>FSR 2</b>
<b>4. Operations Personnel:</b>		Page 1 of 1

Operations Section Chief: <b>JC. Greenburg</b> Branch Director: <b>J. Scheld</b> Division/Group Supervisor:	Night Ops: <b>M. Ryan</b> Branch Safety: Air Attack: <b>Tim Schiffler</b>
---	---

5. Resources Assigned:		** Resources Below in Bold are 12 Hour **					
Resource Identifier	ALS	LWD	Leader	Personnel	Request #	Hours	Reporting Location
ENG PVT E-99 LOOMIS 43			<b>DAVID MELENDEZ</b>	<b>3</b>	<b>E-99</b>	<b>0700-1900</b>	<b>DP 25</b>
ENG PVT E-100 LOOMIS 46			<b>PAUL HUDDLESTON</b>	<b>3</b>	<b>E-100</b>	<b>0700-1900</b>	<b>DP 25</b>
DOZ PVT E-32 FIVE STAR			<b>ASA BENNET</b>		<b>E-32</b>	<b>0700-1900</b>	<b>DP 25</b>
DOZ PVT E-35 JUNWIRTH			<b>JERRY JUNWIRTH</b>		<b>E-35</b>	<b>0700-1900</b>	<b>DP 25</b>
DOZ PVT E-125 SKINNERS					<b>E-125</b>	<b>0700-1900</b>	<b>DP 25</b>
DOV PVT E-126 ERICKSON			<b>FRED ERICKSON</b>		<b>E-126</b>	<b>0700-1900</b>	<b>DP 25</b>
DOZ PVT E-136 CEDAR			<b>ZACK STEVENSON</b>	<b>4</b>	<b>E-136</b>	<b>0700-1900</b>	<b>DP 25</b>
DOZ PVT E-140 BUCK			<b>STEVE LASSEN</b>	<b>2</b>	<b>E-140</b>	<b>0700-1900</b>	<b>DP 25</b>
DOZ PVT E-145 GILES			<b>MIKE GILES</b>		<b>E-145</b>	<b>0700-1900</b>	<b>DP 25</b>
DOZ PVT E-150 COTTONWOOD			<b>MIKE STAHEL</b>	<b>4</b>	<b>E-150</b>	<b>0700-1900</b>	<b>DP 25</b>
W/T PVT E-69 WELLS			<b>JEFF WELLS</b>	<b>2</b>	<b>E-69</b>	<b>0700-1900</b>	<b>DP 25</b>
W/T PVT E-132 DOWLING			<b>BERNARD DOWLING</b>		<b>E-132</b>	<b>0700-1900</b>	<b>DP 25</b>
W/T PVT E-191 JOHNSON			<b>MATHEW JOHNSON</b>		<b>E-191</b>	<b>0700-1900</b>	<b>DP 25</b>
HEQB VATCHER			<b>CHRIS VATCHER</b>		<b>O-54</b>	<b>0700-1900</b>	<b>DP 25</b>
HEQB LUCAS (T)			<b>NIC LUCAS</b>		<b>O-18</b>	<b>0700-1900</b>	<b>DP 25</b>
HEQB SCHIELER (T)			<b>DAKOTA SCHIELER</b>		<b>O-55</b>	<b>0700-1900</b>	<b>DP 25</b>
HEQB STRANGE						<b>0700-1900</b>	<b>DP 25</b>
FALM PVT PICHARD					<b>O-354</b>	<b>0700-1900</b>	<b>DP 25</b>

**6. Work Assignments:**  
 Assess for suppression repair needs.  
 Conduct suppression repair operations.

**7. Special Instructions:**

**8. Communications**

Name	Ch	Function	Rx Freq	Rx Tone	Tx Freq	Tx Tone	Mode	Notes
CDF C10	1	COMMAND	151.1900	(T8) 103.5	159.2250	(T2) 123.0	A	
CDF T32	7	TACTICAL	151.2425	(T16) 192.8	151.2425	(T16) 192.8	A	
A/G TAC	14	A/G TAC	169.1500		169.1500		A	A/G TAC
CALCORD	15	MEDICAL	156.0750	(T6) 156.7	156.0750	(T6) 156.7		
GUARD	16	AIR GUARD	168.6250	0.0	168.6250	(T1) 110.9	EMERGENC Y USE ONLY	

**9. Prepared by: Name:** Robert Roland      RESL      Signature:

ICS 204      Date/Time: 9/8/2022 2200      Personnel Count: 18

### AIR OPERATIONS SUMMARY ICS-220

Incident Name / Number Mountain / CA-SKU-007586	Sunrise 644	Startup 714	Cutoff 1900	Sunset 1930	Time Prepared 1400	Date Prepared Thursday, September 8, 2022	Prepared By Niko Matteoli
Shutdown 2000				Operational Period - Date Friday September 9, 2022		Operational Period - Time 0700-2100	
<b>General Remarks, Safety Notes, Hazards, Air Operations Special Equipment, etc.</b> TRACK ALL DIPSITE LOCATIONS / NUMBER OF DIPS / GALLONS TAKEN. TRACK ALL DROP LOCATIONS / NUMBER OF DROPS / GALLONS DROPPED ALL GPS DATA TO BE COLLECTED IN DEGREES.MINUTES.DECIMAL.MINUTES.FORMAT.  AVOID Aerial Application of Retardant / Foam / Agent within 300' of Waterways, Bodies of Water, etc. If Retardant / Foam / Agent is Dropped Within These Areas Immediately Notify the AOB and Provide the Following Information: Lat / Long, Estimated Number of Gallons and a Map Detailing The Area.							
Helibase Information Name Weed Latitude 41 28.85 Longitude 122 27.27				TFR Information Request # A-92 Polygon: NM Altitude: 10,000 MSL  Centerpoint: Lat Long NOTAMS: 2/1609 Frequency 123.1750 <a href="http://efl.faa.gov/tfr2/list.html">http://efl.faa.gov/tfr2/list.html</a>		Rescue Ship Information Day/Host Name G840 Phone Make/Model UH-60 Location Weed Airport Request Procedure for These Aircraft: Mountain Communications See Medical Plan For Additional Info	

Your Sunrise and Sunset info has not been updated for the current Op period


FAA #	Type	Make/Model	Helibase	Avail	Start	Remarks	FAA #	Type	Make/Model	Helibase	Avail	Start	Remarks
<b>HELICOPTERS ( Use page 2 if Needed )</b>													
3TW	I	UH-60	Weed	0800	0830	LL							
9PJ	I	UH-60	Weed	0800	0830	LL							
8PG	I	UH-60	Weed	0800	0830	LL							
6FG	I	UH-60	Weed	0800	0830	LL							
3HT	I	S-64	Weed	0800	0830	Tank							
CNU	II	B 212HP	Weed	0800	0830	LL, Standard							
2HS	III	AS350 B3	Weed	0800	0830	Recon							
50R	III	AS350 B3	Weed	0800	0830	Helico							
4TV	III	AS350 B3	Weed	0800	0830	Recon							
<b>FIXED WING ( Use Page 2 if Needed )</b>													
FAA #	Type	Make/Model	Base	Avail	Start	Remarks	FAA #	Type	Make/Model	Base	Avail	Start	Remarks

Position	Name	Phone	Traine	Phone
AOBD	Niko Matteoli	(704) 488-2460		
ASGS	Matt Munson	(707) 228-6646		
HBM	Skyler Merritt	(831) 818-6323	Arturo Gonzalez	(707) 295-1239
HLCO	Eric Gornberg	(408) 832-4619		
HLCO	Alex Lujan	(530) 925-0834		
AAML	Crystal Henson	(707) 599-5345		

Niko Matteoli

# ICS 205 - INCIDENT RADIO COMMUNICATIONS PLAN

CONTROLLED UNCLASSIFIED  
INFORMATION/BASIC

1. Incident Name: Mill / Mountain Incident Incident Channels		2. Date/Time Prepared Date: 09/08/2022 Time: 1930		3. Operational Period: Date From: 09/09/22 Time From: 0700		Date To: Time To: 09/10/22 0700			
<b>4. Communications</b>									
Ch#	Function	Name	Assigned To	Rx Freq	Rx Tone	Tx Freq	Tx Tone	Mode	Notes
1	COMMAND	CDF C10	ALL DIVS	151.1900	(T8) 103.5	159.2250	(T2) 123.0	A	
2									
3									
4	TACTICAL	CDF T27	DIV BB / GG	159.3075	(T16) 192.8	159.3075	(T16) 192.8	A	
5	TACTICAL	CDF T28	DIV LL / OO	151.1825	(T16) 192.8	151.1825	(T16) 192.8	A	
6	TACTICAL	CDF T31	DIV PP / TT / WW	159.3825	(T16) 192.8	159.3825	(T16) 192.8	A	
7	TACTICAL	CDF T32	FSR BR	151.2425	(T16) 192.8	151.2425	(T16) 192.8	A	FSR 1 & FSR 2 / MOUNTAIN
8	TACTICAL	NIFC T1	DIV A / Z	168.0500	(T2) 123.0	168.0500	(T2) 123.0	A	
9	TACTICAL	NIFC T3	FSR	168.6000	(T2) 123.0	168.6000	(T2) 123.0	A	FSR / MILL
10									
11									
12									
13	A/G CMD	CDF T18	ALL DIVS	159.3450	(T16) 192.8	159.3450	(T16) 192.8	A	A/G CMD
14	A/G TAC	A/G TAC	ALL DIVS	169.1500		169.1500		A	A/G TAC
15	MEDICAL	CALCORD	ALL DIVS	156.0750	(T6) 156.7	156.0750	(T6) 156.7	A	
16	AIR GUARD	GUARD	ALL DIVS	168.6250	0.0	168.6250	(T1) 110.9	A	EMERGENCY USE ONLY
17									
18									
19									
20	AIR GUARD	GUARD	ALL DIVS	168.6250	0.0	168.6250	(T1) 110.9	A	EMERGENCY USE ONLY
<b>5. Special Instructions</b>									
<b>THE FIRE HAS ONLY ONE GROUP IN THE RADIO, ONE COMMAND FOR THE MILL AND MOUNTAIN FIRE.</b>									
<b>6. Prepared by (Communications Unit Leader):</b> Name: C.Johns COML S.Gamba COML(t)								Signature: 	
ICS 205 - CONTROLLED UNCLASSIFIED INFORMATION//BASIC								Date/Time: 09/08/22	
								NIMS IAP 1930	

<b>MEDICAL PLAN ICS 206</b>	<b>1. INCIDENT NAME MILL INCIDENT</b>	<b>2. DATE PREPARED 09/08/2022</b>	<b>3. TIME PREPARED 1800</b>	<b>4. OPERATIONAL PERIOD 09/09-09/10 0700-0700</b>
---------------------------------	---	--	----------------------------------	--

**5. INCIDENT MEDICAL AID STATIONS**

MEDICAL SUPPLY STATIONS	LOCATION	PARAMEDICS	
		YES	NO
<b>CAL MAT</b>	<b>YREKA BASE CAMP</b>	<b>MD</b>	
<b>MERT</b>	<b>YREKA BASE CAMP</b>	<b>RN</b>	

**6. TRANSPORTATION**

**A. AMBULANCE SERVICES**

NAME	LOCATION	PHONE	PARAMEDICS	
			YES	NO
<b>Mountain Medics 102, 103</b>	<b>102-DAY, 103-NIGHT</b>	<b>CMD CHANNEL</b>	<b>X</b>	
<b>Mountain Medics Mobile Tx with UTV</b>	<b>Branch XX</b>	<b>CMD CHANNEL</b>	<b>X</b>	

**B. AIR AMBULANCES**

NAME	LOCATION	PARAMEDICS
		YES NO
<b>CALIFORNIA GUARD 840 (24 HOUR HOIST)</b>	<b>WEED AIRPORT -CONTACT CMD-</b>	<b>X</b>

**7. HOSPITALS**

NAME	ADDRESS	TRAVEL TIME		PHONE Frequency	HELIPAD		BURN CENTER	
		AIR	GRD		YES	NO	YES	NO
<b>FAIRCHILD MED CENTER</b>	<b>444 BRUCE ST, YREKA 41° 43.154' N, 122° 38.702' W</b>	<b>15 Min</b>	<b>30 Min</b>	<b>(530) 841-8292</b>		<b>X</b>		<b>X</b>
<b>UC DAVIS MED CENTER TRAUMA LVL 1</b>	<b>2315 STOCKTON AVE SACRAMENTO 38° 33.292' N, 121° 27.317' W</b>	<b>90 Min</b>	<b>6 HR</b>	<b>(916) 734-2011</b>	<b>X</b>		<b>X</b>	
<b>MERCY MEDICAL TRAUMA LVL 2</b>	<b>2175 ROSALINE AVE REDDING 40° 34.334' N, 122° 23.797' W</b>	<b>45 Min</b>	<b>90 Min</b>	<b>(530) 225-7200</b>	<b>X</b>			<b>X</b>
<b>ASANTE ROGUE VALLEY TRAUMA LVL 2</b>	<b>2825 BARNETT RD MEDFORD 42° 19.078' N, 122° 49.907' W</b>	<b>45 Min</b>	<b>90 Min</b>	<b>(541) 789-7116</b>	<b>X</b>			<b>X</b>

**8. MEDICAL EMERGENCY PROCEDURES**

**EMERGENCY FREQUENCY:  
"LINE EMERGENCY"**

The Crew Supervisor will contact the Division Supervisor with patient complaint/condition, location and resource needs.

- Division/Group Supervisor contacts:
  1. Closest EMS resource
  2. Communications Unit
- Communications Unit contacts:
  1. Ground or Air ambulance as requested
  2. Operations
  3. Safety
  4. Medical Unit
- Division Supervisor or designee will serve as point of contact and run medical emergencies on the assigned channel.
  1. A pre-assigned COMMAND frequency and CALCORD should be used for IWI and only for duration of need.
- Communications Unit will clear the command channel for emergency traffic as needed and only for the duration of need.

**CAMP EMERGENCY:**

Contact the Medical Unit 831-325-4221 with a patient complaint/condition and location. Medical Staff will respond to stabilize incident:

- Medical Unit contacts:
 

1. Communications	4. Operations
2. Safety	5. Crew Supervisor
3. Logistics	6. Comps/Claims

**INJURY REPORTING PROCEDURES**

CHIEF COMPLAINT \_\_\_\_\_  
 LOCATION OF PATIENT \_\_\_\_\_  
 POINT OF CONTACT \_\_\_\_\_  
 TRANSPORTATION REQUESTED BY: AIR \_\_\_ GROUND \_\_\_  
 POINT OF PICKUP \_\_\_\_\_  
 LAT \_\_\_\_\_ LONG \_\_\_\_\_  
 PATIENT UNIT ID \_\_\_\_\_  
 IS AN EMT/P WITH PATIENT: YES \_\_\_ NO \_\_\_  
 AGE \_\_\_\_\_  
 SEX: MALE \_\_\_ FEMALE \_\_\_

**ALL EMERGENCIES---Secure the area  
and identify witnesses for later investigation.  
Keep an accurate log of events.**

**EMERGENCY  
916-883-0931**

<b>ICS 206</b>	<b>9. PREPARED BY: (Medical Unit Leader) JOSH STALEY-(MEDL)</b>	<b>10. REVIEWED BY: (Safety Officer) ANDREW KIBBY- (SOF1)</b>
----------------	---	---



# \$ FINANCE MESSAGE \$

**\*Please No Off Site Feeding Unless Approved by a Finance Section Chief.**

## **CAL FIRE PERSONNEL**

If anyone has any CalCard travel receipts and meal/lodging sign in sheets, please get a copy to Finance.

Don't forget to stop at the TIME Unit and do two separate FC33's if you were assigned to both Incidents please.

## **FEDERAL RESOURCES**

Please see the attached information labeled "Mill & Mountain Incident Fed & Fed Contract Resources". Here you will find detailed information for you to send and how to send your documents to a Federal Timekeeper.

## **LOCAL GOVERNMENT RESOURCES**

Make sure you check in with OES for F-42 Paperwork.

## **ALL HIRED EQUIPMENT**

Make sure you get your shift ticket filled out by your **Division Group Supervisor or Supervisor each shift.**

## **ALL SUPERVISORS OF HIRED EQUIPMENT**

Shift Tickets for hired equipment need to be signed and turned in to TIME **daily**. Ensure the shift ticket is filled out completely (including evaluation), accurately and legibly. **Example included in IAP.**

## **PROPERTY DAMAGE or INJURIES**

Please report any property damage caused by suppression activities and/or injuries to the Comp/Claims Unit ASAP **(951) 234-7667**.

# MILL & MOUNTAIN INCIDENT

## FED & FED CONTRACT RESOURCES

Please send all documents to [R5.CalFire.Support@firenet.gov](mailto:R5.CalFire.Support@firenet.gov) for all resources.

NOTE: Please scan a single resources order number's documents at a time. Do not scan multiple resource orders' CTRs and Shift Tickets together. Thank you.

Email all documents that pertain to your assignment:

Agency Personnel	Agency ADs / EFFs	VIPR Resources	Contract / Agency Crews
<ul style="list-style-type: none"> <li>• Crew Time reports (CTR)</li> </ul>	<ul style="list-style-type: none"> <li>• Resource Order</li> <li>• Casual Hire Form</li> <li>• Crew Time reports (CTR)</li> </ul>	<ul style="list-style-type: none"> <li>• Resource Order</li> <li>• VIPR Agreement #</li> <li>• Schedule of Items</li> <li>• Inspections</li> <li>• Shift Tickets</li> </ul>	<ul style="list-style-type: none"> <li>• Resource Order</li> <li>• Manifest</li> <li>• Agreement / Contract Schedule of Items</li> <li>• Inspections</li> <li>• Crew Time Reports / Shift Tickets</li> </ul>

Submit Equipment Shift Tickets or Crew Time Reports (CTRs) daily to [R5.CalFire.Support@firenet.gov](mailto:R5.CalFire.Support@firenet.gov)

Please include your email address and phone number in the body of the email when sending your documents.

If you have any questions, please call: FINANCE -- (512) 829-1479



# 24 Hour Shift

EMERGENCY SHIFT TICKET and EVALUATION FORM					Contractor Name		
The responsible Government Officer will complete this form each shift					Fireline Builders		
Incident or Project Name		Incident Number	Request Number		Operator #1	Operator #2	
August Complex West Zone		CAMEU010843	E-99		Jim Smith	John Jones	
Agreement Number					Operator Furnished By:		
LNU01234567					<input checked="" type="checkbox"/> Contractor	<input type="checkbox"/> Government	
Equipment Make		Equipment Model / Type				Operating Supplies Furnished By:	
CAT		Dozer D6H				<input checked="" type="checkbox"/> Contractor	<input type="checkbox"/> Government
Serial Number		Licence Number				Equipment Status	
6LN3344						<input checked="" type="checkbox"/> Inspected	<input checked="" type="checkbox"/> Under Agreement
Equipment Use					Released by Government		
(Circle) <b>Hours</b> / Days / Miles					Withdrawn by Contractor		
Date	Start	Stop	Work	Assignment			
8/2	0700	2400	17	Division J			
8/3	0001	0700	7	Division J			
Vendor Rating					Remarks/Comments **		
Poor*   Avg.   Good   Exc.   N/A					Govt. Rep. Name and Position - PRINT		
Met Performance Expectations					Mike Brown, Div J		
Equipment in Safe Working Condition					Govt. Rep. Signature		
Operator Skill Level					Mike Brown		
Operates Safely					Contractor Signature		
Operator's Cooperation Level					Jim Smith		
Overall Performance					Date: 08/03/16 Time: 0700		
* NOTE: Any rating of POOR requires an explanation in Comment Section.					CALFIRE 297		
**Final evaluation or for more documentation, use an ICS Form 230 or equivalent.					(Rev 3-2011)		

# 12 Hour Shift

EMERGENCY SHIFT TICKET and EVALUATION FORM					Contractor Name		
The responsible Government Officer will complete this form each shift					H2O For You		
Incident or Project Name		Incident Number	Request Number		Operator #1	Operator #2	
August Complex West Zone		CAMEU010843	E-89		James Russell		
Agreement Number					Operator Furnished By:		
LNU11111199					<input checked="" type="checkbox"/> Contractor	<input type="checkbox"/> Government	
Equipment Make		Equipment Model / Type				Operating Supplies Furnished By:	
Peterbilt		2000 Gallon				<input checked="" type="checkbox"/> Contractor	<input type="checkbox"/> Government
Serial Number		Licence Number				Equipment Status	
11145N		SE653574				<input checked="" type="checkbox"/> Inspected	<input checked="" type="checkbox"/> Under Agreement
Equipment Use					Released by Government		
(Circle) <b>Hours</b> / Days / Miles					Withdrawn by Contractor		
Date	Start	Stop	Work	Assignment			
8/2	0001	0700	7	Off Shift			
8/2	0700	2000	13	Division B			
8/2	2000	2400	4	Off Shift			
Vendor Rating					Remarks/Comments **		
Poor*   Avg.   Good   Exc.   N/A					Govt. Rep. Name and Position - PRINT		
Met Performance Expectations					Steve Hampton, Div B		
Equipment in Safe Working Condition					Govt. Rep. Signature		
Operator Skill Level					Steve Hampton		
Operates Safely					Contractor Signature		
Operator's Cooperation Level					James Russell		
Overall Performance					Date: 08/02/16 Time: 2000		
* NOTE: Any rating of POOR requires an explanation in Comment Section.					CALFIRE 297		
**Final evaluation or for more documentation, use an ICS Form 230 or equivalent.					(Rev 3-2011)		

# CAL FIRE INCIDENT MANAGEMENT TEAM WATER USAGE LOG

DATE: \_\_\_\_\_

Division / Group: \_\_\_\_\_

AGENCY ID / VENDOR: \_\_\_\_\_

I.e.. Strike Team 1110C, Acme Water Tenders

REQUEST # \_\_\_\_\_

**TURN INTO FINANCE DAILY**

WATER SOURCE LOCATION	Hydrant	Open source i.e. pond	Tank	Gallons Used	Property Owner / Contact Number if known **

**\*\*Please note if you made contact with property owner and their contact.**

**Information:** \_\_\_\_\_

This document is intended to track, record and validate the amount of water used on a incident. It's not intended to review the performance of equipment using the water on an incident.



# PUBLIC INFORMATION SECTION



## Incident Information

Public Information Line: (844)668-3474

Media Line: (209)628-3097

Status			
Mill Incident Start Date: 9-2-22 12:49 p.m.		Mountain Incident Start Date: 9-2-22 3:48 p.m.	
Total acres:	Containment:	Total acres:	Containment:
Cause: Under Investigation	Total Personnel:	Cause: Under Investigation	Total Personnel:

**MEDIA** – The California State Penal Code Section 409.5(d) allows the news media to enter scenes of disaster, riot or civil disturbance. Properly identified members of the news media should not be restricted from entering locations specified within the code. However, this does not include crime scenes, private property and does not imply that the news media may interfere with incident operations while they are in the areas of concern. More information can be found [here](#).



**CAL FIRE SOCIAL MEDIA POLICY** – When assigned to a CAL FIRE incident, you will adhere to the CAL FIRE Social Media Policy, Section 0691. You can find further information about the CAL FIRE Social Media Policy [here](#).



**PHOTOGRAPHS AND VIDEOS OF INCIDENT** – We are in a new era of media. Media no longer means news/broadcast industry, but now refers to anyone that has the capability to shoot video, photographs and post them onto social media sites in a matter of minutes. Unfortunately, we have seen some instances of photographs or videos that have depicted unsafe, unprofessional or embarrassing circumstances which are a serious breach of ethics. When this happens, it reflects poorly on all that are attached to this incident. Posting an inappropriate video, photo or blog comment could expose oneself to unwanted ramifications. It may be unsafe to shoot photos or video and a firefighter who is concentrating on a camera loses their situational awareness.

The Public Information Office would like copies of the video and pictures that you safely took while not in an emergency situation, fire suppression activity or in an overhead assignment. Bring your video and pictures to the Public Information trailer; they will be reviewed and possibly uploaded to our many CAL FIRE social media sites. Remember, we don't want photographs or videos that depict unsafe, unprofessional or embarrassing circumstances, which are a serious breach of ethics.



**LOST AND FOUND** – The Information Section will manage lost and found items for the incident.

**MAIL SERVICE** – The Information Section can assist you with sending and receiving mail.

**Siskiyou County Fairgrounds**  
 ATTN: Mill or Mountain Information  
 (Your Name and Resource)  
 1712 Fairlane Road  
 Yreka, CA 96097

## PEER SUPPORT MESSAGE

Watch for the signs and symptoms of stress in yourself and the people around you. Some of the signs and symptoms you may be experiencing include, but are not limited to:

Irritability, lack of sleep, quick to anger, isolation, above average tobacco use, an increase in negative coping mechanisms such as excessive alcohol and/or substance abuse. You might experience lack of appetite, isolate yourself, or various other unexplained reactions to normal everyday events.



Peer Support Handouts

You may not be experiencing these symptoms now. However, you may find yourself experiencing them when you return to your home or Unit or have a co-worker who is. You may be triggered by a past event, that has impacted you, while assigned to future incidents. A sight, sound, smell, or touch could trigger a memory, affecting you now, but you are not sure why?

If you find yourself in this situation and need to talk to someone, please contact a peer support team member.

The peer support team is available on the incident for any peer support needs.

Examples of peer support needs are, but not limited to, understanding the science behind stress and reactions, assistance with professional or personal crisis, other behavioral health, and wellness impacts. Come see and ask us what we do and can provide.... We will gladly explain!

**Stay Healthy, Stay Alert and Stay Strong!**



# Training Message

If you are a Trainee and demobing please make sure that you have the following items when you come to Training prior to your demob time.

- ✓ Taskbook
- ✓ ICS 225
- ✓ Performance Evaluation

Without these items a Type 1 Incident Training Packet is **unable** to be issued.

If you are not at base camp and need to demob, please email, or text the requested items to me.

[Dottie.Shaw@fire.ca.gov](mailto:Dottie.Shaw@fire.ca.gov)

619-971-1701





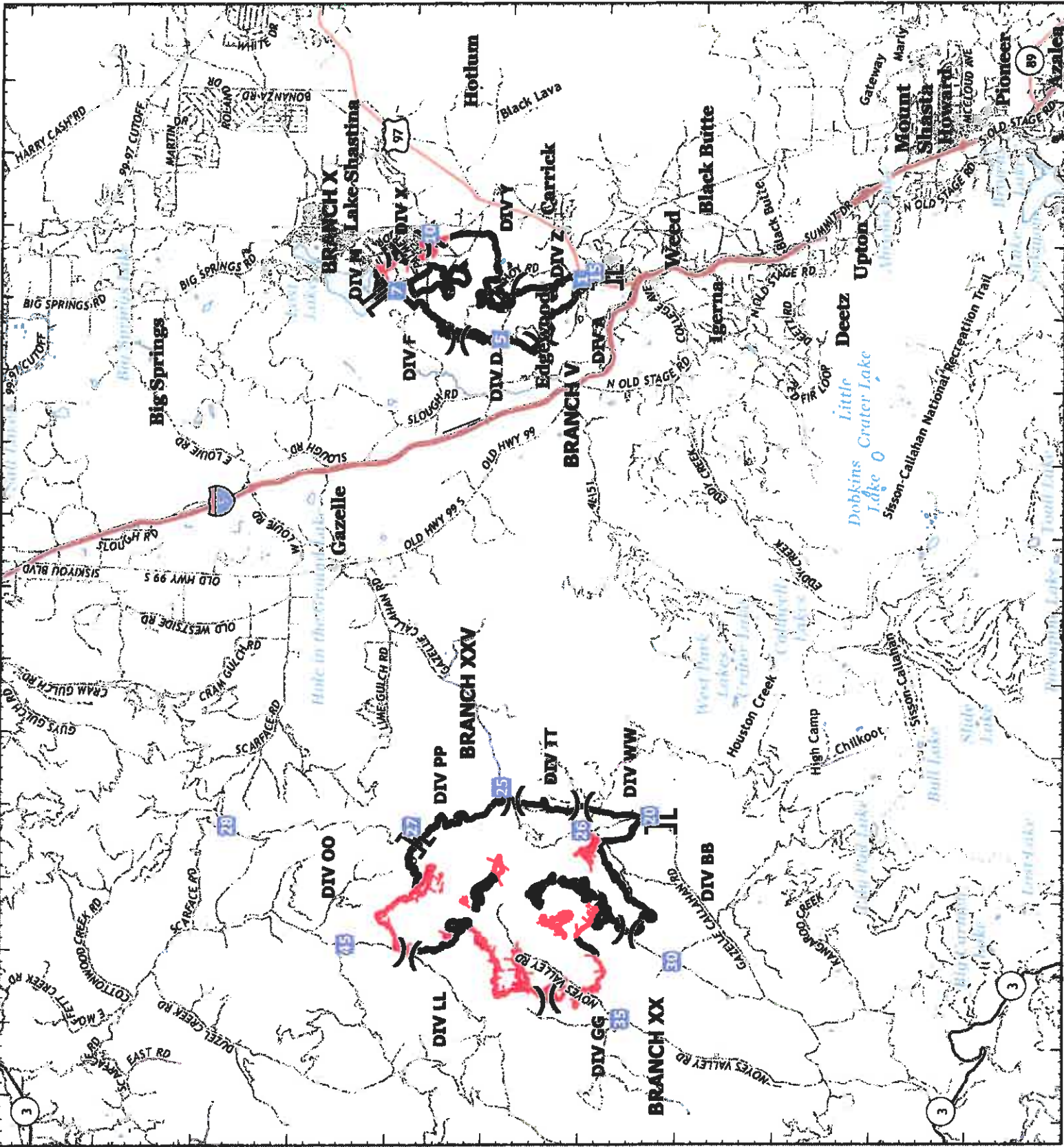
**DEMOBILIZATION PLAN**  
**MILL CA-SKU-007568**  
**MOUNTAIN CA-SKU-007586**



**DEMOB PROCEDURES**

- Check the demob list daily. You can find the demob list posted around camp or by utilizing the QR code on your IAP.
- Please report to demob only at your scheduled time.
- Only one person per resource is to report to demob.
  
- The Demob Unit will provide you with an ICS-221 check-out form.
  
- For the following units, Demob personnel will make positive contact to ensure you are clear for demobilization:
  - Supply Unit
  - Communications Unit
  - Accommodations Unit (If applicable)
  
- For the following units, you will report in person to complete your check-out:
  - Time Unit
  - Documentation Unit
  - Training Specialist (If applicable)
  - Ground Support Unit
  
- Return your completed ICS 221 to the Demob Unit and you will be advised of your status (released home, reassigned, etc.)

Greg Barnhart  
Demobilization Unit Leader  
CAL FIRE Incident Management Team 5



**Transportation Map**  
 Mountain Incident  
 CA-SKU-007586  
 Mill Incident  
 CA-SKU-007568  
 September 9, 2022

-  Contained
-  Uncontained
-  Division Break
-  Branch Break
-  Drop Point



1:200,000  
 Datum: NAD 83





### UNIT LOG (ICS 214)

<b>1. Incident Name:</b> Mill / Mountain Incident	<b>2. Operational Period:</b> Date From: 9/9/22 Date To: 9/10/22 Time From: 0700 Time To: 0700
--	---

<b>3. Unit Name/Designators</b>	<b>4. Unit Leader (Name and ICS Position)</b>
---------------------------------	---

5. Personnel Assigned/Designators		
NAME	ICS POSITION	HOME BASE

6. Activity Log (Continue on Reverse)	
TIME	MAJOR EVENTS

7. Prepared By:	Date/Time:
-----------------	------------