

# INCIDENT ACTION PLAN

## PARK INCIDENT

CA-BTU-013761  
STATE IAP

Friday



### OPERATIONAL PERIOD

8/30/2024 0700  
to  
8/31/2024 0700



**This page intentionally left blank**

## INCIDENT OBJECTIVES (ICS 202)

<b>1. Incident Name:</b> <p style="text-align: center;">PARK</p>	<b>2. Operational Period:</b>	Date From: 8/30/2024 Time From: 0700	Date To: 8/31/2024 Time To: 0700
---	-------------------------------	---	-------------------------------------

**3. Objective(s):**

- Management Objectives**
- Provide for emergency personnel and public safety at all times.
  - Protect property, improvements, and infrastructure.
  - Ensure costs are aligned with mission priorities.
  - Ensure coordinated, timely, and accurate release of public information.
  - Continue to enhance and maintain positive relationships with all local partners, cooperators, and stakeholders.
  - Protect economic, natural, cultural, and heritage resources.
  - Implement fire suppression repair activities in accordance with approved suppression repair plans.

- Control Objectives**
- Keep the fire within the current fire perimeter.

**General Situational Awareness:**

**5. Site Safety Plan Required?** Yes  No

**Approved Site Safety Plan(s) Located at:**

- 6. Incident Action Plan**
- |   |  |  |  |
|---|--|--|--|
| <input checked="" type="checkbox"/> ICS 203     | <input checked="" type="checkbox"/> Federal 206/IWI  | <input checked="" type="checkbox"/> Finance Message      | <input checked="" type="checkbox"/> State FSR Plan     |
| <input checked="" type="checkbox"/> ICS 204     | <input checked="" type="checkbox"/> ICS 220          | <input checked="" type="checkbox"/> Shift Ticket Example | <input checked="" type="checkbox"/> Transportation Map |
| <input checked="" type="checkbox"/> State 205   | <input checked="" type="checkbox"/> Weather Forecast | <input checked="" type="checkbox"/> LOGS/GSUL Message    | <input checked="" type="checkbox"/> ICS 214            |
| <input checked="" type="checkbox"/> Federal 205 | <input checked="" type="checkbox"/> Fire Behavior    | <input checked="" type="checkbox"/> Demob Message        | <input type="checkbox"/>                               |
| <input checked="" type="checkbox"/> State 206   | <input checked="" type="checkbox"/> ICS 208          | <input checked="" type="checkbox"/> Demob Plan           | <input type="checkbox"/>                               |

**7. Prepared By:** C. Post      Position/Title: PSC      Signature:      DocuSigned by: \_\_\_\_\_

**8. Approved by Incident Commander:** G. Magaña      Signature:      \_\_\_\_\_







## Spot Forecast

National Weather Service <nws.sacramento@noaa.gov>

Thu 8/29/2024 3:17 PM

**Warning:** this message is from an external user and should be treated with caution.

FNUS76 KSTO 292217

FWSSTO

Spot Forecast for PARK Incident...CAL FIRE

National Weather Service Sacramento CA

317 PM PDT Thu Aug 29 2024

Forecast is based on forecast start time of 0700 PDT on August 30.  
If conditions become unrepresentative...contact the National Weather Service.

.DISCUSSION...

Hot and dry conditions expected over the burn area this week with above-normal temperatures. Cooler temperatures later this weekend and into Monday. Low daytime relative humidity with poor overnight recoveries continue through Saturday, with slight improvement on Sunday and Monday. Generally lighter, terrain driven winds are forecast each day, occasionally breezy in the afternoons. Increased southwest flow expected Sunday as a trough approaches NorCal. Thunderstorm threat has decreased with chances generally below 5% probability this weekend and into early next week, although some cumulus clouds are possible.

.FRIDAY...

Sky/weather.....Sunny.

Max temperature.....83-95.

Min humidity.....18-22 percent.

Wind (20 ft).....

Slope/valley.....Northeast/down-drainage winds 3 to 6 mph

shifting to the southwest/upslope after 1000  
around 5 to 10 mph, with gusts to 15 mph in the  
afternoon.

Ridgetop.....Northeast winds 4 to 9 mph shifting

to the southwest after 1000 around 6 to  
11 mph, with gusts 15 to 20 mph in the

afternoon.

Mixing height.....Increasing to 3000 ft AGL.

Transport winds.....Southwest around 10 mph.

.SATURDAY...

Sky/weather.....Sunny.

Max temperature.....82-94.

Min humidity.....16-22 percent.

Wind (20 ft).....

Slope/valley.....Northeast winds 4 to 6 mph shifting  
to the southwesterly after 1000 around 8 to  
11 mph, with gusts up to 15 mph in the  
afternoon.

Ridgetop.....Northeast winds 6 to 9 mph shifting  
to the south-southwest after 1000 around 6 to  
12 mph, with gusts 15 to 20 mph in the  
afternoon.

Mixing height.....Increasing to 4200 ft AGL.

Transport winds.....South around 8 mph.

.SUNDAY...

Sky/weather.....Sunny.

Max temperature.....83-92.

Min humidity.....18-23 percent.

Wind (20 ft).....

Slope/valley.....Northeast winds 3 to 6 mph shifting  
to the southerly after 4 pm around 8 to  
12 mph, with gusts to 15 to 20 mph in the  
afternoon.

Ridgetop.....Northeast winds 4 to 8 mph shifting  
to the southwest after 4 pm around 9 to  
13 mph, with gusts 15 to 20 mph in the  
afternoon.

Mixing height.....Increasing to around 5700 ft AGL.

Transport winds.....South-southwest 15 to 20 mph.

.FORECAST DAYS 3 THROUGH 5...

.SUNDAY...

Mostly clear. Lows in the lower 60s. Highs in the mid 80s. Light  
winds.

.LABOR DAY...

Clear. Lows in the upper 50s. Highs in the upper 70s. Light  
winds.

.TUESDAY...

Mostly clear. Lows in the upper 50s. Highs in the mid 80s. Light  
winds.

\$\$

Forecaster...KF

Requested by...Stephen Volmer

Type of request...WILDFIRE

.TAG 2421269.0/STO

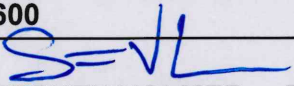
.DELDT 08/29/24

.FormatterVersion 2.0.0

.EMAIL stephen.volmer@fire.ca.gov



## FIRE BEHAVIOR OUTLOOK

<b>FIRE NAME:</b> PARK	<b>OUTLOOK PERIOD (valid time period):</b> 8/30-9/2/24 0700-0700
<b>DATE ISSUED:</b> August 29, 2024	<b>TIME ISSUED:</b> 1600
<b>UNIT:</b> Cal Fire Tehama Glenn	<b>SIGNED:</b>  <b>Typed/printed:</b> STEPHEN VOLMER FBAN

**WEATHER/CLIMATOLOGY DISCUSSION:** Weather pattern will remain quiet and stable through the period with continued clear skies. The Diurnal wind patterns will continue across the area, with enhanced effects in and across the drainages.

FRIDAY: Daytime high 95, RH 18-22%, Morning NE winds shifting to SW 5-10mph with gust to 15mph  
 SATURDAY: Daytime high 94, RH 16-22%, Morning NE winds shifting to SW 8-11mph with gust to 15mph  
 SUNDAY: Daytime high 92, RH 18-23%, Afternoon W winds shifting to SW gusting 15-20mph.

**FIRE BEHAVIOR DISCUSSION:** Expect fires to be terrain and fuels dominated. Direct air tactics will produce good holding results in the light fuels and across ridge tops. The Energy Release Component (ERC) is well below seasonal averages and projected to climb to average levels over the coming week. The abundant fine flashy fuels will easily sustain ignition and allow for dangerous fire spread rates when in alignment with wind and topography. There is currently a statewide **Fuels and Fire Behavior Advisory** issued by both GACCs for the abundant grass crops this season.

**\*\*\* All fuels will continue to dry out. ERC, BI, and all fuels will climb to near seasonal averages \*\*\***

**Short Range (Today, Tomorrow) and Medium Range (3 Days):**

	FLAME LENGTH ft	RATE OF SPREAD ft/min	SPOTTING DISTANCE mi	PROBABILITY OF IGNITION
GRASS	6	38	.2	68%
BRUSH	9	50	.2	68%
TIMBER	9	14	.3	68%

**\*\*\*Above values are valid within 10 miles of the incident\*\*\***

**Smoke Concerns:** Minimal smoke production will come from the incident. Smoke from new incidents will travel towards the northeast.

**Air Resources:** Clear skies with minimal afternoon clouds. Mixing heights increase through the forecast period from 3,500' to 5,500' with SW winds 5-10 mph. Plan ahead as resources could be delayed due to new incidents.

### SAFETY

- Review the **Fuels and Fire Behavior Advisory** included for information regarding the abundant fine flashy fuel crop that has occurred statewide this year.
- Utilize "one foot in the burn" tactics when engaging slop-overs, spot fires, or any new incidents.
- Fire damaged trees and branches in the fire area will continue to release. Be alert when working near any tree.

**Reassessment Criteria:** Changing weather and conditions past the September 2nd expiration date of this forecast, or any locations other than the area listed. Contact the local NWS office to request Spot Weather Forecasts for any new incident.

**This page intentionally left blank**



# Fuels and Fire Behavior Advisory

## California Wide

August 20, 2024 – September 2, 2024



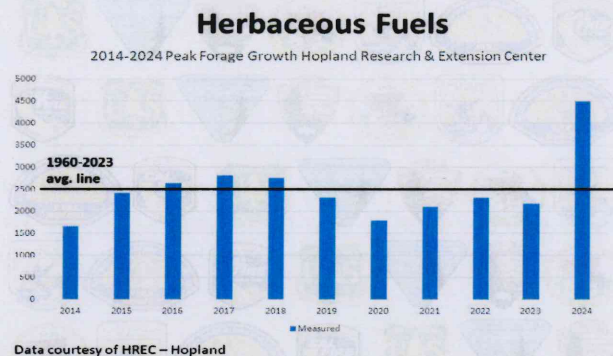
**Subject:** Herbaceous fuel loads are above to well above average across most of California's grass-dominated systems, including typically arid deserts and valleys that often do not support fire growth.

**Discussion:** Precipitation and temperature alignments throughout the winter and spring of 2024 have resulted in an above average load of herbaceous fuels across many grass-dominated systems throughout California. The above normal grass and herbaceous load creates a continuous fuel bed, allowing for rapid spread of fires when these fuels are cured. The continuous nature of the herbaceous fuel bed is enhanced by remnant thatch resulting from herbaceous growth during the abnormally wet late summer and fall of 2023 and multiple consecutive years of above average herbaceous growth.

**The combination of heavy herbaceous fuels with seasonably available dead woody and live fuels results in a highly flammable fire environment where rapid fire growth has been observed and is expected to continue for initial attack fires.**

### Difference from normal conditions:

Herbaceous fuel loadings in the California Coast Ranges, Sierra Foothills, and areas east of the Sierra Crest range from 120% to as much as 198% of normal. These fuels are fully cured at all elevations and across all PSAs in California where herbaceous fuels dominate the fire environment.



### Concerns to Firefighters and the Public:

- Continuous and above normal fuel loading lowers the wind speed threshold needed to initiate rapid spread of fires during initial attack. Under what are typically low to moderate wind speeds, rates of spread and flame lengths are likely to exceed direct attack capabilities.
- Areas that typically resist fire spread, such as grazed areas and arid / semi-arid high valleys and deserts, may not slow fire growth or reduce fire behavior as expected.
- Heavy and continuous cured herbaceous fuels are highly available and may serve as catalysts for rapid fire spread in brush and timber fuel types.

### Mitigation Measures:

- Modify tactics to account for expected rapid rates of spread and long-range spotting potential.
- Brief all resources on these conditions, especially out-of-area resources unfamiliar with local conditions.
- Consider augmentation of initial attack resources.
- Fire behavior prediction simulations using fuel models GR1 and GR2 are likely to underpredict spread; modification to GR4 or GR7 may be needed to accurately model fire spread in herbaceous fuels.

**Area of Concern:** Areas where herbaceous fuels dominate the fire environment across all PSAs and at all elevations in California.

**Issued By:** Predictive Services Units of Northern California and Southern California, in coordination with Cal Fire and Cal OES Fire and Rescue Division.



# Fuels and Fire Behavior Advisory

## California Wide

August 20, 2024 – September 2, 2024





# SAFETY MESSAGE

## PARK INCIDENT

1. Incident Name: PARK

### **FATIGUE, HEAT & DEHYDRATION**

**MONITOR** yourself and your personnel for FATIGUE and DEHYDRATION.

Avoid complacency; maintain appropriate **Work Rest Cycles**,

Seek shade when possible.

**Stay Hydrated!**

### **PERSONAL PROTECTIVE EQUIPMENT**

Ensure approved and issued PPE is being worn by all personnel engaged in mop-up. Supervisors set the tone and **LEAD BY EXAMPLE**. Burn injuries while mopping up in many circumstances is preventable. Know and understand the limitations of your PPE.

### **EMOTIONAL FATIGUE**

Ensure you use **EAP/ESS** as needed. Clinicians and Peer support are in basecamp.

Proper nutrition, rest and hydration reduces fatigue and exhaustion emergencies.

Know your physical limits and be honest and quick to report limitations or not feeling well.

### **DEFENSIVE DRIVING REQUIREMENTS: Be the Professional**

**MAINTAIN SAFE SPEEDS!** Caution with blind corners; watch for civilian traffic.

**EVALUATE** your driving routes, morning school traffic and community interaction.

**TURN ON** headlights; prepare for the unexpected.

**UTILIZE** chocks, backers and spotters; when in doubt scout it out!

**Stay hydrated, get rest, and travel safely.**

▪ 4. Site Safety Plan Required? Yes  No

ICS 208



# ASSIGNMENT LIST (ICS 204 WF)

CONTROLLED UNCLASSIFIED  
INFORMATION//BASIC

<b>1. Incident Name:</b> <p style="text-align: center; font-size: 1.2em;">PARK</p>	<b>2. Operational Period:</b> Date From: 08/30/24    Date To: 08/31/24 Time From: 0700    Time To: 0700	<b>3. Branch                      Group</b> <p style="text-align: center; font-size: 1.2em;">TEHAMA                      FSR 1</p>
---	---	---

<b>4. Operations Personnel:</b>		Page 1 of 2
Operations Chief: <b>C. Swensen</b>	Night Ops:	
Branch Director: <b>C. Matthews (12), D. Pedersen (12)</b>	Branch Safety:	
Division/Group Supervisor: <b>M. Skrainer (12), M. Novak (FSRS)(12)</b>	Air Attack:	

5. Resources Assigned:	** Resources Below in Bold are 12 Hour **						
Resource Identifier	ALS	LWD	Leader	Personnel	Request #	Hours	Reporting Location
STC NEU 9232C			<b>STEVE WEST</b>	16	<b>E-40</b>	0700-1900	Butte Staging
STG TGU 9254G (CDCR)			<b>GARRETT NIXON</b>	35	<b>C-6</b>	0700-1900	Butte Staging
DOZ2 PVT C&P E-120			<b>PATRICK TARBUSH</b>	1	<b>E-120</b>	0700-1900	Butte Staging
DOZ2 PVT CHERNOH E-312			<b>GARRETT CHERNOH</b>	1	<b>E-312</b>	0700-1900	Butte Staging
DOZ2 PVT MATANDY E-317			<b>MATT HARKNESS</b>	1	<b>E-317</b>	0700-1900	Butte Staging
DOZ2 PVT DIRECT E-333			<b>CHRIS NEACE</b>	1	<b>E-333</b>	0700-1900	Butte Staging
DOZ2 PVT BLACK KNIGHT E-518			<b>ALEX WUNSCH</b>	2	<b>E-518</b>	0700-1900	Butte Staging
DOZ2 PVT HERBERT E-519			<b>DONALD HERBERT</b>	1	<b>E-519</b>	0700-1900	Butte Staging
W/T PVT D8 E-376			<b>JUSTIN DEVORSS</b>	1	<b>E-376</b>	0700-1900	Butte Staging
W/T PVT URBAN E-390			<b>ERIC WHINMANN</b>	1	<b>E-390</b>	0700-1900	Butte Staging
W/T PVT WEINRICH E-755			<b>TODD JAMES</b>	1	<b>E-755</b>	0700-1900	Butte Staging
W/T PVT AMERIVET E-1012			<b>DAVID DALTON</b>	1	<b>E-1012</b>	0700-1900	Butte Staging
W/T PVT BLACK NIGHT E-1189			<b>ELLEN SCHAAR</b>	1	<b>E-1189</b>	0700-1900	Butte Staging
W/T PVT O'FERRALL E-1192			<b>TRAVIS O'FERRALL</b>	1	<b>E-1192</b>	0700-1900	Butte Staging
W/T PVT FRANK E-1313			<b>CLINTON BAKER</b>	2	<b>E-1313</b>	0700-1900	Butte Staging
W/T PVT CAL WATER E-1841			<b>DAVID RAMSEY</b>	1	<b>E-1841</b>	0700-1900	Butte Staging
MAS PVT BACKWOODS E-1629			<b>JERRY JUNGWIRTH</b>	1	<b>E-1629</b>	0700-1900	Butte Staging
EXC PVT RK E-289			<b>SCOTT TYNAN</b>	1	<b>E-289</b>	0700-1900	Butte Staging

**6. Work Assignments:**  
Implement fire suppression repair plan.

**7. Special Instructions:**

8. Communications								
Name	Ch	Function	Rx Freq	Rx Tone	Tx Freq	Tx Tone	Mode	Notes
CDF C7	1	COMMAND	151.4600	(T8) 103.5	159.3900	(T1) 110.9	A	TONE 1 - TURNER MTN.
CDF T21	3	TACTICAL	151.4675	(T16) 192.8	151.4675	(T16) 192.8	A	
CDF A/G8	14	A/G	159.3450	(T16) 192.8	159.3450	(T16) 192.8	A	
CALCORD	15	MEDICAL	156.0750	(T6) 156.7	156.0750	(T6) 156.7	A	
AIRGUARD	16	EMERGENCY	168.6250	0.0	168.6250	(T1) 110.9	A	

**9. Prepared by: Name:** G. Adams                      RESL                      Signature:

ICS 204                      Date/Time: 8/29/2024    2100                      Personnel Count: 69



# ASSIGNMENT LIST (ICS 204 WF)

CONTROLLED UNCLASSIFIED  
INFORMATION//BASIC

<b>1. Incident Name:</b> <p style="text-align: center; font-weight: bold;">PARK</p>	<b>2. Operational Period:</b> Date From: 08/30/24    Date To: 08/31/24 Time From: 0700    Time To: 0700	<b>3. Branch                      Group</b> <p style="text-align: center; font-weight: bold;">TEHAMA                      FSR 1</p>
--	---	--

<b>4. Operations Personnel:</b>		Page 2 of 2
Operations Chief: <b>C. Swensen</b>	Night Ops:	
Branch Director: <b>C. Matthews (12), D. Pedersen (12)</b>	Branch Safety:	
Division/Group Supervisor: <b>M. Skrainer (12), M. Novak (FSRS)(12)</b>	Air Attack:	

5. Resources Assigned:	** Resources Below in Bold are 12 Hour **						
Resource Identifier	ALS	LWD	Leader	Personnel	Request #	Hours	Reporting Location
EXC PVT GARMAN E-1757			<b>BUD GARMAN</b>	1	<b>E-1757</b>	0700-1900	Butte Staging
EXC PVT PRECISION E-1785			<b>NATE MORTON</b>	1	<b>E-1785</b>	0700-1900	Butte Staging
EXC PVT BAR & G E-2019			<b>JOHN CAREY</b>	2	<b>E-2019</b>	0700-1900	Butte Staging
EXC PVT KROEKER E-2022			<b>MICHAEL SALDANA</b>	1	<b>E-2022</b>	0700-1900	Butte Staging
EXC PVT DIAMOND E-2132			<b>KEN OLIVER</b>	1	<b>E-2132</b>	0700-1900	Butte Staging
EXC PVT DIAMOND E-2199			<b>JOE NEVIS</b>	1	<b>E-2199</b>	0700-1900	Butte Staging
EXC PVT MESSER INC E-2201			<b>CHRIS SCHRODER</b>	1	<b>E-2201</b>	0700-1900	Butte Staging
GRD PVT DIG IT E-1774			<b>TIM WAGNER</b>	2	<b>E-1774</b>	0700-1900	Butte Staging
CHIP PVT 3J E-1626			<b>COLE JARVIS</b>	2	<b>E-1626</b>	0700-1900	Butte Staging
CHIP PVT ALL PHASE E-1705			<b>JOHN FULLER</b>	2	<b>E-1705</b>	0700-1900	Butte Staging
HEQB GAINEY (T)			<b>BRETT GAINEY</b>	1	<b>O-1587</b>	0700-1900	Butte Staging
HEQB VOLLMER (T)			<b>ADAM VOLLMER</b>	1	<b>O-1588</b>	0700-1900	Butte Staging
HEQB LAFFERTY (T)			<b>JASON A LAFFERTY</b>	1	<b>O-1633</b>	0700-1900	Butte Staging
FSRS MAR (T)			<b>TANNER MAR</b>	1	<b>O-1434</b>	0700-1900	Butte Staging
FSRS MACKELBURG (T)			<b>MACKELBURG</b>	1	<b>O-1593</b>	0700-1900	Butte Staging
FSRS BOONE (T)			<b>MATTHEW BOONE</b>	1	<b>O-1761</b>	0700-1900	Butte Staging
TFLD COMEAU			<b>CHAD COMEAU</b>	1	<b>O-1482</b>	0700-1900	Butte Staging
TFLD FERRER (T)			<b>GABRIEL FERRER</b>	1	<b>O-1528</b>	0700-1900	Butte Staging

**6. Work Assignments:**  
Implement fire suppression repair plan.

**7. Special Instructions:**

8. Communications								
Name	Ch	Function	Rx Freq	Rx Tone	Tx Freq	Tx Tone	Mode	Notes
CDF C7	1	COMMAND	151.4600	(T8) 103.5	159.3900	(T1) 110.9	A	TONE 1 - TURNER MTN.
CDF T21	3	TACTICAL	151.4675	(T16) 192.8	151.4675	(T16) 192.8	A	
CDF A/G8	14	A/G	159.3450	(T16) 192.8	159.3450	(T16) 192.8	A	
CALCORD	15	MEDICAL	156.0750	(T6) 156.7	156.0750	(T6) 156.7	A	
AIRGUARD	16	EMERGENCY	168.6250	0.0	168.6250	(T1) 110.9	A	

**9. Prepared by: Name:** G. Adams                      RESL                      Signature:

ICS 204                      Date/Time: 8/29/2024 2100                      Personnel Count: 22



# ASSIGNMENT LIST (ICS 204 WF)

CONTROLLED UNCLASSIFIED  
INFORMATION//BASIC

<b>1. Incident Name:</b> <p style="text-align: center; font-weight: bold;">PARK</p>	<b>2. Operational Period:</b> Date From: 08/30/24    Date To: 08/31/24 Time From: 0700    Time To: 0700	<b>3. Branch                      Group</b> <p style="text-align: center; font-weight: bold;">TEHAMA                      FSR 2</p>
--	---	--

<b>4. Operations Personnel:</b>		Page 1 of 2
Operations Chief: <b>C. Swensen</b>	Night Ops:	
Branch Director: <b>C. Matthews (12), D. Pedersen (12)</b>	Branch Safety:	
Division/Group Supervisor: <b>U. Moua (12), M. Jonsson (12), J. Townsend (T)(12)</b>	Air Attack:	

5. Resources Assigned:	** Resources Below in Bold are 12 Hour **							
Resource Identifier	ALS	LWD	Leader	Personnel	Request #	Hours	Reporting Location	
STG LNU 9149G (CDCR)			<b>JOHNATHAN WILSON</b>	40	<b>C-57</b>	0700-1900	DP 41	
DO22 PVT KITE E-52			<b>NICK FERGUSON</b>	1	<b>E-52</b>	0700-1900	DP 41	
DO22 PVT R & H E-269			<b>JERRY SEABOURN</b>	1	<b>E-269</b>	0700-1900	DP 41	
DO22 PVT R & H E-270			<b>JERMAINE ROQUEMORE</b>	1	<b>E-270</b>	0700-1900	DP 41	
DO22 PVT COPPER E-272			<b>RICHARD KUEHN</b>	1	<b>E-272</b>	0700-1900	DP 41	
DO22 PVT TJ E-274			<b>TAYLOR DOMSCHOT</b>	1	<b>E-274</b>	0700-1900	DP 41	
DO23 PVT ARCHIBALD E-1897			<b>DAKOTA ARCHIBALD</b>	1	<b>E-1897</b>	0700-1900	DP 41	
DOZ PVT SUMMIT E-2192			<b>ROBERT HENSLEY</b>	1	<b>E-2192</b>	0700-1900	DP 41	
W/T PVT VANGUARD E-397			<b>KEN MERWIN</b>	1	<b>E-397</b>	0700-1900	DP 41	
W/T PVT T & S E-1311			<b>CHRIS MAUGHS</b>	1	<b>E-1311</b>	0700-1900	DP 41	
W/T PVT ALAN'S E-1675			<b>TYLER NYBERG</b>	1	<b>E-1675</b>	0700-1900	DP 41	
MAS PVT 4C E-456			<b>DEREK VOLLMER</b>	1	<b>E-456</b>	0700-1900	DP 41	
EXC PVT JANC E-292			<b>VAUGHN PERKINS</b>	1	<b>E-292</b>	0700-1900	DP 41	
EXC PVT WARNER E-293			<b>LOGAN JAMERSON</b>	2	<b>E-293</b>	0700-1900	DP 41	
EXC PVT COTTONWOOD E-1040			<b>NICHOLAS DEARMON</b>	2	<b>E-1040</b>	0700-1900	DP 41	
EXC PVT WD E-1628			<b>ADAM DANIELS</b>	1	<b>E-1628</b>	0700-1900	DP 41	
EXC PVT MILLER E-1906			<b>HAROLD MILLER</b>	1	<b>E-1906</b>	0700-1900	DP 41	
EXC PVT MORRISON E-2020			<b>MATT MORRISON</b>	1	<b>E-2020</b>	0700-1900	DP 41	

**6. Work Assignments:**  
Implement fire suppression repair plan.

**7. Special Instructions:**

8. Communications								
Name	Ch	Function	Rx Freq	Rx Tone	Tx Freq	Tx Tone	Mode	Notes
CDF C7	1	COMMAND	151.4600	(T8) 103.5	159.3900	(T1) 110.9	A	TONE 1 - TURNER MTN.
CDF T21	3	TACTICAL	151.4675	(T16) 192.8	151.4675	(T16) 192.8	A	
CDF A/G8	14	A/G	159.3450	(T16) 192.8	159.3450	(T16) 192.8	A	
CALCORD	15	MEDICAL	156.0750	(T6) 156.7	156.0750	(T6) 156.7	A	
AIRGUARD	16	EMERGENCY	168.6250	0.0	168.6250	(T1) 110.9	A	

**9. Prepared by: Name:** G. Adams                      RESL                      Signature:

ICS 204                      Date/Time: 8/29/2024 2100                      Personnel Count: 59



# ASSIGNMENT LIST (ICS 204 WF)

CONTROLLED UNCLASSIFIED  
INFORMATION//BASIC

<b>1. Incident Name:</b> <p style="text-align: center;"><b>PARK</b></p>	<b>2. Operational Period:</b> Date From: 08/30/24    Date To: 08/31/24 Time From: 0700    Time To: 0700	<b>3. Branch</b> <b>Group</b> <p style="text-align: center;"><b>TEHAMA    FSR 2</b></p>
--	---	--

<b>4. Operations Personnel:</b>		Page 2 of 2
Operations Chief: <b>C. Swensen</b>	Night Ops:	
Branch Director: <b>C. Matthews (12), D. Pedersen (12)</b>	Branch Safety:	
Division/Group Supervisor: <b>U. Moua (12), M. Jonsson (12), J. Townsend (T)(12)</b>	Air Attack:	

5. Resources Assigned:		** Resources Below in Bold are 12 Hour **					
Resource Identifier	ALS	LWD	Leader	Personnel	Request #	Hours	Reporting Location
EXC PVT GREG E-2112			<b>GREG HUMPHERYS</b>	1	<b>E-2112</b>	0700-1900	DP 41
EXC PVT 4C E-2198			<b>TYLER MATTIS</b>	1	<b>E-2198</b>	0700-1900	DP 41
SKID PVT HOLMES E-1690			<b>DEE HOLMES</b>	1	<b>E-1690</b>	0700-1900	DP 41
CHIP PVT WARNER E-1437			<b>LOGAN JAMERSON</b>	1	<b>E-1437</b>	0700-1900	DP 41
CHIP PVT LTC E-1747			<b>JAMES LAAN</b>	2	<b>E-1747</b>	0700-1900	DP 41
FALM PVT CAMPBELL O-968			<b>MICHAEL LEWIS</b>	2	<b>O-968</b>	0700-1900	DP 41
FALM PVT WEST O-1049			<b>JIM MCDANIEL</b>	2	<b>O-1049</b>	0700-1900	DP 41
FALM PVT K5 O-1051			<b>MAX COLLINS</b>	2	<b>O-1051</b>	0700-1900	DP 41
HEQB BRIDGER			<b>CHRIS BRIDGER</b>	1	<b>O-1327</b>	0700-1900	DP 41
HEQB PERKINS			<b>TYSON PERKINS</b>	1	<b>O-1336</b>	0700-1900	DP 41
HEQB NATSIOS (T)			<b>BRIAN NATSIOS</b>	1	<b>O-1334</b>	0700-1900	DP 41
HEQB SEMLER (T)			<b>CODY SEMLER</b>	1	<b>O-1542</b>	0700-1900	DP 41
HEQB MURPHY (T)			<b>RYAN MURPHY</b>	1	<b>O-1586</b>	0700-1900	DP 41
HEQB PAINE (T)			<b>NICHOLAS PAINE</b>	1	<b>O-1639</b>	0700-1900	DP 41
HEQB JANOW (T)			<b>THOMAS JANOW</b>	1	<b>O-1758</b>	0700-1900	DP 41
FSRS MONTGOMERY			<b>TIMOTHY MONTGOMERY</b>	1	<b>O-568</b>	0700-1900	DP 41
FSRS CORELLA			<b>KIM CORELLA</b>	1	<b>O-1719</b>	0700-1900	DP 41
FSRS WHIPPLE-ORTEGA (T)			<b>DENNIS WHIPPLE-ORTEGA</b>	1	<b>O-1193</b>	0700-1900	DP 41
TFLD MOYER			<b>MAKR MOYER</b>	1	<b>O-1483</b>	0700-1900	DP 41
THSP RICH			<b>SHANNON RICH</b>	1	<b>O-941</b>	0700-1900	DP 41

**6. Work Assignments:**  
Implement fire suppression repair plan.

**7. Special Instructions:**

8. Communications								
Name	Ch	Function	Rx Freq	Rx Tone	Tx Freq	Tx Tone	Mode	Notes
CDF C7	1	COMMAND	151.4600	(T8) 103.5	159.3900	(T1) 110.9	A	TONE 1 - TURNER MTN.
CDF T21	3	TACTICAL	151.4675	(T16) 192.8	151.4675	(T16) 192.8	A	
CDF A/G8	14	A/G	159.3450	(T16) 192.8	159.3450	(T16) 192.8	A	
CALCORD	15	MEDICAL	156.0750	(T6) 156.7	156.0750	(T6) 156.7	A	
AIRGUARD	16	EMERGENCY	168.6250	0.0	168.6250	(T1) 110.9	A	

**9. Prepared by: Name:** G. Adams    RESL    Signature:

ICS 204    Date/Time: 8/29/2024 2100    Personnel Count: 22







# ASSIGNMENT LIST (ICS 204 WF)

CONTROLLED UNCLASSIFIED  
INFORMATION//BASIC

<b>1. Incident Name:</b> <p style="text-align: center; font-weight: bold;">PARK</p>	<b>2. Operational Period:</b> Date From: 08/30/24    Date To: 08/31/24 Time From: 0700        Time To: 0700	<b>3. Branch                      Group</b> <p style="text-align: center; font-weight: bold;">TEHAMA                      FSR 3</p>
--	---	--

<b>4. Operations Personnel:</b>		Page 2 of 2
Operations Chief: <b>C. Swensen</b>	Night Ops:	
Branch Director: <b>C. Matthews (12), D. Pedersen (12)</b>	Branch Safety:	
Division/Group Supervisor: <b>H. Deets (12), S. Resendez (T)(12), J. Little (FSRS)(12)</b>	Air Attack:	

5. Resources Assigned:	** Resources Below in Bold are 12 Hour **							
Resource Identifier	ALS	LWD	Leader	Personnel	Request #	Hours	Reporting Location	
EXC PVT RIDGE E-2138			<b>RYAN HUGHES</b>	1	<b>E-2138</b>	<b>0700-1900</b>	<b>DP 33</b>	
EXC PVT DONALD E-2202			<b>JASON KAMINE</b>	1	<b>E-2202</b>	<b>0700-1900</b>	<b>DP 33</b>	
EXC PVT FIGAS E-2203			<b>BOB FIGAS</b>	1	<b>E-2203</b>	<b>0700-1900</b>	<b>DP 33</b>	
FELB PVT SIERRA E-1439			<b>CODY MOORE</b>	2	<b>E-1439</b>	<b>0700-1900</b>	<b>DP 33</b>	
SKD PVT RUSTY E-1707			<b>JOSHUA GUIFFRA</b>	1	<b>E-1707</b>	<b>0700-1900</b>	<b>DP 33</b>	
SKD PVT LOGGING E-2055			<b>LUKE HALL</b>	1	<b>E-2055</b>	<b>0700-1900</b>	<b>DP 33</b>	
GRD PVT LEPAGE E-1773			<b>TYLER FOLSOM</b>	1	<b>E-1773</b>	<b>0700-1900</b>	<b>DP 33</b>	
CHIP PVT H2AO E-1448			<b>HAYDEN OILAR</b>	2	<b>E-1448</b>	<b>0700-1900</b>	<b>DP 33</b>	
CHIP PVT CTS E-1745			<b>WESTON BURTON</b>	2	<b>E-1745</b>	<b>0700-1900</b>	<b>DP 33</b>	
BKH PVT LEPAGE E-2098			<b>JIM LEPAGE</b>	2	<b>E-2098</b>	<b>0700-1900</b>	<b>DP 33</b>	
FALM PVT JENSENS O-916			<b>SAWYER BRENT</b>	2	<b>O-916</b>	<b>0700-1900</b>	<b>DP 33</b>	
HEQB GATTON			<b>BRIAN GATTON</b>	1	<b>O-1628</b>	<b>0700-1900</b>	<b>DP 33</b>	
FSRS ERICKSON			<b>DAVID ERICKSON</b>	1	<b>O-1753</b>	<b>0700-1900</b>	<b>DP 33</b>	
FSRS BRITTON (T)			<b>JUSTIN BRITTON</b>	1	<b>O-851</b>	<b>0700-1900</b>	<b>DP 33</b>	

**6. Work Assignments:**  
Implement fire suppression repair plan.

**7. Special Instructions:**

**8. Communications**

Name	Ch	Function	Rx Freq	Rx Tone	Tx Freq	Tx Tone	Mode	Notes
CDF C7	1	COMMAND	151.4600	(T8) 103.5	159.3900	(T1) 110.9	A	TONE 1 - TURNER MTN.
CDF T21	3	TACTICAL	151.4675	(T16) 192.8	151.4675	(T16) 192.8	A	
CDF A/G8	14	A/G	159.3450	(T16) 192.8	159.3450	(T16) 192.8	A	
CALCORD	15	MEDICAL	156.0750	(T6) 156.7	156.0750	(T6) 156.7	A	
AIRGUARD	16	EMERGENCY	168.6250	0.0	168.6250	(T1) 110.9	A	

**9. Prepared by: Name:** G. Adams                      RESL                      Signature:

ICS 204                      Date/Time: 8/29/2024 2100                      Personnel Count: 19



# ASSIGNMENT LIST (ICS 204 WF)

CONTROLLED UNCLASSIFIED  
INFORMATION//BASIC

<b>1. Incident Name:</b> <p style="text-align: center; font-weight: bold;">PARK</p>	<b>2. Operational Period:</b> Date From: 08/30/24    Date To: 08/31/24 Time From: 0700        Time To: 0700	<b>3. Branch                      Group</b> <p style="text-align: center; font-weight: bold;">TEHAMA                      FSR 4</p>
--	---	--

<b>4. Operations Personnel:</b>		Page 1 of 3
Operations Chief: <b>C. Swensen</b>	Night Ops:	
Branch Director: <b>C. Matthews (12), D. Pedersen (12)</b>	Branch Safety:	
Division/Group Supervisor: <b>B. Cottrell (T)(12), J. Ravenscroft (FSRS)(12)</b>	Air Attack:	

5. Resources Assigned:	** Resources Below in Bold are 12 Hour **							
Resource Identifier	ALS	LWD	Leader	Personnel	Request #	Hours	Reporting Location	
STC SHU 9249C			<b>SHANE LAMKIN</b>	16	<b>E-1054</b>	<b>0700-1900</b>	<b>DP 38</b>	
STG TGU 9252G (CDCR)			<b>KRIS DARNALL</b>	33	<b>C-47</b>	<b>0700-1900</b>	<b>DP 38</b>	
DOZ2 PVT HOLMES E-116			<b>DEE HOLMES</b>	1	<b>E-116</b>	<b>0700-1900</b>	<b>DP 38</b>	
DOZ2 PVT RIDGE E-266			<b>GARY AINGER</b>	1	<b>E-266</b>	<b>0700-1900</b>	<b>DP 38</b>	
DOZ2 PVT MESSER E-520			<b>TRAVIS MARTIN</b>	1	<b>E-520</b>	<b>0700-1900</b>	<b>DP 38</b>	
DOZ PVT JW MORRISON E-2221			<b>MATT MORRISON</b>	1	<b>E-2221</b>	<b>0700-1900</b>	<b>DP 38</b>	
W/T PVT T&S E-385			<b>BRANDON ST. JOHN</b>	1	<b>E-385</b>	<b>0700-1900</b>	<b>DP 38</b>	
W/T PVT CHURCHIE'S E-769			<b>MONTE KIELTY</b>	1	<b>E-769</b>	<b>0700-1900</b>	<b>DP 38</b>	
W/T PVT MARIAH E-1017			<b>JAMES NEIL</b>	1	<b>E-1017</b>	<b>0700-1900</b>	<b>DP 38</b>	
W/T PVT WILLMORE E-1312			<b>JEFFREY BRUNNEMEL</b>	1	<b>E-1312</b>	<b>0700-1900</b>	<b>DP 38</b>	
W/T PVT VIERAS E-1848			<b>JOHN VIERA</b>	1	<b>E-1848</b>	<b>0700-1900</b>	<b>DP 38</b>	
W/T PVT NELSONS E-1979			<b>CODY JAMES</b>	1	<b>E-1979</b>	<b>0700-1900</b>	<b>DP 38</b>	
W/T PVT LONE STAR E-2029			<b>OSCAR MADERA</b>	1	<b>E-2029</b>	<b>0700-1900</b>	<b>DP 38</b>	
MAS PVT SITE E-474			<b>KYLE MARTIN</b>	1	<b>E-474</b>	<b>0700-1900</b>	<b>DP 38</b>	
MAS PVT GREENOUS E-477			<b>FRANK DROGOWSKI</b>	1	<b>E-477</b>	<b>0700-1900</b>	<b>DP 38</b>	
MAS PVT DENNIS E-479			<b>PAT DENNIS</b>	1	<b>E-479</b>	<b>0700-1900</b>	<b>DP 38</b>	
MAS PVT H2AO E-2187			<b>HAYDEB OILAR</b>	1	<b>E-2187</b>	<b>0700-1900</b>	<b>DP 38</b>	
MAS PVT GP E-2225			<b>GLENN PARMAN</b>	1	<b>E-2225</b>	<b>0700-1900</b>	<b>DP 38</b>	

**6. Work Assignments:**  
Implement fire suppression repair plan.

**7. Special Instructions:**

8. Communications								
Name	Ch	Function	Rx Freq	Rx Tone	Tx Freq	Tx Tone	Mode	Notes
CDF C7	1	COMMAND	151.4600	(T8) 103.5	159.3900	(T1) 110.9	A	TONE 1 - TURNER MTN.
CDF T21	3	TACTICAL	151.4675	(T16) 192.8	151.4675	(T16) 192.8	A	
CDF A/G8	14	A/G	159.3450	(T16) 192.8	159.3450	(T16) 192.8	A	
CALCORD	15	MEDICAL	156.0750	(T6) 156.7	156.0750	(T6) 156.7	A	
AIRGUARD	16	EMERGENCY	168.6250	0.0	168.6250	(T1) 110.9	A	

**9. Prepared by: Name:** G. Adams                      RESL                      Signature:

ICS 204                      Date/Time: 8/29/2024 2100                      Personnel Count: 65



# ASSIGNMENT LIST (ICS 204 WF)

CONTROLLED UNCLASSIFIED  
INFORMATION//BASIC

<b>1. Incident Name:</b> <p style="text-align: center;"><b>PARK</b></p>	<b>2. Operational Period:</b> Date From: 08/30/24    Date To: 08/31/24 Time From: 0700        Time To: 0700	<b>3. Branch                      Group</b> <p style="text-align: center;"><b>TEHAMA                      FSR 4</b></p>
--	---	--

<b>4. Operations Personnel:</b>		Page 2 of 3
Operations Chief: <b>C. Swensen</b>	Night Ops:	
Branch Director: <b>C. Matthews (12), D. Pedersen (12)</b>	Branch Safety:	
Division/Group Supervisor: <b>B. Cottrell (T)(12), J. Ravenscroft (FSRS)(12)</b>	Air Attack:	

5. Resources Assigned:	** Resources Below in Bold are 12 Hour **							
Resource Identifier	ALS	LWD	Leader	Personnel	Request #	Hours	Reporting Location	
EXC PVT BUD E-1121			<b>HEATH GARMAN</b>	1	<b>E-1121</b>	<b>0700-1900</b>	<b>DP 38</b>	
EXC PVT RED MOUNT E-1361			<b>CONNOR DECUIR</b>	1	<b>E-1361</b>	<b>0700-1900</b>	<b>DP 38</b>	
EXC PVT INGRAM E-1908			<b>MIKE WHEELER</b>	1	<b>E-1908</b>	<b>0700-1900</b>	<b>DP 38</b>	
EXC PVT DVBE E-2135			<b>TONY CHAVEZ</b>	1	<b>E-2135</b>	<b>0700-1900</b>	<b>DP 38</b>	
EXC PVT SAM E-2139			<b>SAM COOKSON</b>	1	<b>E-2139</b>	<b>0700-1900</b>	<b>DP 38</b>	
FELB PVT ALL PHASE E-457			<b>JAKE IMBER</b>	1	<b>E-457</b>	<b>0700-1900</b>	<b>DP 38</b>	
SKD PVT WARNER E-1649			<b>JAMES VAUGHN</b>	1	<b>E-1649</b>	<b>0700-1900</b>	<b>DP 38</b>	
CHIP PVT GP E-1627			<b>TORRI PARMAN</b>	2	<b>E-1627</b>	<b>0700-1900</b>	<b>DP 38</b>	
CHIP PVT BUNDY'S E-1703			<b>JUSTIN GARRETT</b>	2	<b>E-1703</b>	<b>0700-1900</b>	<b>DP 38</b>	
CHIP PVT CROWN TREE E-1749			<b>DEREK COX</b>	2	<b>E-1749</b>	<b>0700-1900</b>	<b>DP 38</b>	
MUL PVT GENERAL E-483			<b>JEREMY TODD</b>	1	<b>E-483</b>	<b>0700-1900</b>	<b>DP 38</b>	
MUL PVT SIERRA E-2168			<b>CHAZ TIMMS</b>	1	<b>E-2168</b>	<b>0700-1900</b>	<b>DP 38</b>	
MUL PVT GENERAL LEE E-2172			<b>ROBERT E LEE</b>	1	<b>E-2172</b>	<b>0700-1900</b>	<b>DP 38</b>	
HEQB GALE			<b>TRISTAN GALE</b>	1	<b>O-1332</b>	<b>0700-1900</b>	<b>DP 38</b>	
HEQB HUTSON (T)			<b>ANDREW HUTSON</b>	1	<b>O-1443</b>	<b>0700-1900</b>	<b>DP 38</b>	
HEQB JEUDE (T)			<b>IAN JEUDE</b>	1	<b>O-1453</b>	<b>0700-1900</b>	<b>DP 38</b>	
HEQB MCBRIDE (T)			<b>IAN MCBRIDE</b>	1	<b>O-1512</b>	<b>0700-1900</b>	<b>DP 38</b>	
HEQB ALEGRIA (T)			<b>NICHOLAS ALEGRIA</b>	1	<b>O-1636</b>	<b>0700-1900</b>	<b>DP 38</b>	

**6. Work Assignments:**  
Implement fire suppression repair plan.

**7. Special Instructions:**

8. Communications								
Name	Ch	Function	Rx Freq	Rx Tone	Tx Freq	Tx Tone	Mode	Notes
CDF C7	1	COMMAND	151.4600	(T8) 103.5	159.3900	(T1) 110.9	A	TONE 1 - TURNER MTN.
CDF T21	3	TACTICAL	151.4675	(T16) 192.8	151.4675	(T16) 192.8	A	
CDF A/G8	14	A/G	159.3450	(T16) 192.8	159.3450	(T16) 192.8	A	
CALCORD	15	MEDICAL	156.0750	(T6) 156.7	156.0750	(T6) 156.7	A	
AIRGUARD	16	EMERGENCY	168.6250	0.0	168.6250	(T1) 110.9	A	

**9. Prepared by: Name:**                      G. Adams                      RESL                      Signature:

**ICS 204**                      Date/Time: 8/29/2024 2100                      Personnel Count: 21













**AIR OPERATIONS SUMMARY ICS-220**

Incident Name / Number: PARRK / CA-BTU-013761  
 Sunrise: 0632    Startup: 0702    Cutoff: 1914    Sunset: 1944

**General Remarks, Safety Notes, Hazards, Air Operations Special Equipment, etc.**  
 TRACK ALL DIPSITE LOCATIONS / NUMBER OF DIPS / GALLONS TAKEN.  
 TRACK ALL DROP LOCATIONS / NUMBER OF DROPS / GALLONS DROPPED  
 All GPS DATA TO BE COLLECTED IN DEGREES, MINUTES, DECIMAL MINUTES, FORMAT.

*AVOID Aerial Application of Retardant / Foam / Agent within 300' of Waterways, Bodies of Water, etc.  
 If Retardant / Foam / Agent is Dropped Within These Areas Immediately Notify the AOBP and Provide the Following Information: Lat / Long, Estimated Number of Gallons and a Map Detailing The Area.*

*Your Sunrise and Sunset info has not been updated for the current Op period*

Time Prepared	Date Prepared	Prepared By
1700 Shutdown 2014	Thursday, August 29, 2024 Operational Period - Date Friday August 30, 2024	Tom Swanson Operational Period - Time 0700-0700
Helibase Information Name Latitude Longitude	TFR Information Request # Polygon: Altitude: Centerpoint: NOTAMS: Frequency/ Longitude	Rescue Ship Information Day Hoist Name Phone MMSL Lat Long Make/Model Location Request Procedure for These Aircraft: Incident Communications See Medical Plan For Additional Info
Name Latitude Longitude (use page 2 if needed)	Request # Polygon: Altitude: Centerpoint: NOTAMS: Frequency/ Longitude	Day Hoist Name Phone MMSL Lat Long Make/Model Location Request Procedure for These Aircraft: Incident Communications See Medical Plan For Additional Info
Position	Name	Phone
Frequency	RX	RX Tone
AIR TACTICS	169.2875	169.2875
AIR / AIR Rotary Wing	132.375	132.375
Air / Air Brief		
Secondary Rotor Victor		
AIR / GROUND (Command)	159.3450	(T16) 192.8
A/G Tactical:	166.6125	(T10) 107.2
COMMAND	151.4600	(T8) 103.5
DECK	163.1000	163.1000
CALCORD - MEDICAL	156.0750	(T6) 156.7
AIRGUARD - Emergency Only	168.6250	(T1) 110.9

**HELICOPTERS**

**HELICOPTERS**

FAA #	Type	Make/Model	Helibase	Avail	Start	Remarks	FAA #	Type	Make/Model	Helibase	Avail	Start	Remarks
C606	1	S70i	Vina	0800	0800	Day Hoist A-15							
6LH	2	205++	Vina	0800	0800	LL / Crew A-473							
<b>Night Ops Helicopters (NVG)</b>													
<b>Mobile Retardant Base (MRB) &amp; Torch Base (TB) Information</b>													
Name		Manager		Mgr Phone		Latitude		Longitude		Address			
<b>Unmanned Aircraft Systems (UAS)</b>													
Identifier		Pilot		Trainee		Pilot Phone		Remarks / Capabilities					



# ICS 205 - INCIDENT RADIO COMMUNICATIONS PLAN

CONTROLLED UNCLASSIFIED  
INFORMATION/BASIC

<b>1. Incident Name:</b> PARK - TEHAMA Page 1 of 1 Group 51 or 15	<b>2. Date/Time Prepared</b> Date: 08/29/2024 Time: 1930	<b>3. Operational Period:</b> Date To: 08/31/24 Time To: 0700
---	--	---

4. Communications									
Ch#	Function	Name	Assigned To	Rx Freq	Rx Tone	Tx Freq	Tx Tone	Mode	Notes
1	COMMAND	CDF C7	ALL DIVS / GRPS	151.4600	(T8) 103.5	159.3900	(T1) 110.9	A	ZONE 1 - TURNER MTN.
2	TACTICAL	CDF T20	PATROL GROUP	159.2475	(T16) 192.8	159.2475	(T16) 192.8	A	
3	TACTICAL	CDF T21	ALL FSR	151.4675	(T16) 192.8	151.4675	(T16) 192.8	A	
4									
5									
6									
7									
8									
9									
10									
11									
12									
13									
14	A/G	CDF A/G8	ALL DIVS / GRPS	159.3450	(T16) 192.8	159.3450	(T16) 192.8	A	
15	MEDICAL	CALCORD	ALL DIVS / GRPS	156.0750	(T6) 156.7	156.0750	(T6) 156.7	A	***MEDICAL***
16	EMERGENCY	AIRGUARD	ALL DIVS / GRPS	168.6250	0.0	168.6250	(T1) 110.9	A	***EMERGENCY***
17									
18									
19									
20	EMERGENCY	AIRGUARD	ALL DIVS / GRPS	168.6250	0.0	168.6250	(T1) 110.9	A	***EMERGENCY***

**5. Special Instructions**

TO CONFIRM YOU HAVE THE MOST CURRENT CLONE, ENSURE YOUR DISPLAY SHOWS PARKV6 AS THE ZONE NAME / LEGACY RADIOS PRESS AND HOLD THE (#) KEY. HEIGHT AND POWER ARE KEY WHEN USING RADIOS; BE AT A HIGH POINT, USE A MOBILE IF POSSIBLE, AND USE RADIO RELAYS WHEN NEEDED.

---

**6. Prepared by (Communications Unit Leader):** Name: Brooks/Clauson  
 Signature: \_\_\_\_\_  
 Date/Time: 08/29/24 1930

NIMS IAP



**Incident Radio Communications Plan (ICS 205) Day Operations**

<b>Incident Name:</b> PARK FIRE	Southwest Critical Incident Management Team 2	 	<b>Operational Period:</b> 08/30/24
------------------------------------	---	--	--

Channel	Function	Frequency	Narrowband	Assignment & Remarks
1	TAC 1	RX&TX:168.0500 rx&tx tone: 107.2	Narrow	BR XV SUPPRESSION REPAIR GROUP 5
2	TAC 2	RX&TX:168.2000 rx&tx tone: 107.2	Narrow	BR XV ROADS GROUP
3	TAC 3	RX&TX:168.6000 rx&tx tone: 107.2	Narrow	BR XV HAZARD TREE GROUP
4	TAC 4	RX&TX:166.7250 rx&tx tone: 107.2	Narrow	BR XVIII SUPPRESSION REPAIR GROUP 7
5	TAC 5	RX&TX:166.7750 rx&tx tone: 107.2	Narrow	
6	TAC 6	RX&TX:168.2500 rx&tx tone 107.2	Narrow	
7	CMD 7	RX:170.0000 TX:166.6750 rx&tx tone: 107.2	Narrow	MOUNT LASSEN
8	CMD 8	RX:171.0875 TX:164.6000 rx&tx tone: 107.2	Narrow	TURNER MTN
9	CMD 9	RX:171.0375 TX:163.8250 rx&tx tone: 107.2	Narrow	COLBY MTN
10	CMD 10	RX: TX: rx&tx tone:	Narrow	UNASSIGNED
11	LNF DIR	RX&TX:173.1875 tx tone: 103.5	Narrow	LNF Direct
12	LNF TRNR	RX: 173.1875 TX:164.8000 tx tone:146.2	Narrow	LNF Turner Mountain
13	VFIRE24	RX&TX:154.2725 rx&tx tone: 156.7	Narrow	Mutual Aid Tactical
14	A/G	RX&TX:166.6125 rx&tx tone: 107.2	Narrow	Air to Ground
15	CALCORD	RX&TX:156.0750 rx&tx tone: 156.7	Narrow	Medevac
16	Air Guard	RX&TX:168.6250 tx tone: 110.9	Narrow	Emergency Use only

Prepared by: Martin Johns COML *Martin Johns* Clone Version: PARK0830

**Note: All Command Repeaters are Linked** Comm Unit Phone #602-316-8078



## MEDICAL PLAN (ICS 206)

<b>1. Incident Name:</b> <p style="text-align: center;">PARK</p>	<b>2. Operational Period:</b> Date From: 8/30/24 Date To: 8/31/24 Time From: 0700 Time To: 0700
---	--

<b>3. Medical Aid Stations:</b>			
Name	Location	Contact Number/Freq	Level of Service
MERT	ICP	(530) 260-3005	<input checked="" type="checkbox"/> ALS

<b>4. Transportation (indicate air or ground):</b>				
Ambulance Service	Air or Ground	Location	Contact Number/Freq	Level of Service
St. Elizabeth Ambulance	Ground	2550 Sister Mary Columbia Dr. Red Bluff, CA 96080	Command	<input checked="" type="checkbox"/> ALS
C606 (Day)	Air	Red Bluff	Command	<input checked="" type="checkbox"/> BLS
G820 (Night)	Air	Redding	Command	<input checked="" type="checkbox"/> ALS

<b>5. Hospitals:</b>								
Hospital Name	Address,		Contact Number(s)/ Frequency	Travel Time		Trauma Center	Burn Center	Helipad
	Lat & Long			Air	Ground			
St Elizabeth Community Hospital	2550 Sister Mary Columba Dr, Red Bluff, CA 96080 N40 08.95 W122 13.17		530-529-8300	20	55	Level 3	<input type="checkbox"/>	<input checked="" type="checkbox"/>
Enloe Medical Center	1531 Esplanade. Chico, CA 95926. N39 44.53 W121 27.35		530-332-7740	20	55	Level 2	<input type="checkbox"/>	<input checked="" type="checkbox"/>
UC Davis Medical Center	2315 Stockton Blvd Sacramento, CA 95817 N38 33.28 W121 27.35		916-734-3790	60	90	Level 1	<input checked="" type="checkbox"/>	<input checked="" type="checkbox"/>

<b>6. Special Medical Emergency Procedures</b>			
<p><b>Medical Coordination</b> 15 [1] CALCORD 156.075 156.075</p> <p><b>Line Emergency Protocol</b> Crew Supervisor will contact Division Supervisor with patient complaint/condition and location.</p> <ul style="list-style-type: none"> <li>• Division or Group Supervisor Contacts:             <ol style="list-style-type: none"> <li>1. Closest EMS resource</li> <li>2. Communications Unit</li> </ol> </li> <li>• Communications Unit Contacts:             <ol style="list-style-type: none"> <li>1. Ground or Air ambulance as requested.</li> <li>2. Operations</li> <li>3. Safety</li> <li>4. Medical Unit Leader</li> </ol> </li> <li>• Division Supervisor or designee will serve as point of contact and run medical emergency on assigned channel.</li> <li>• Communications Unit will clear the Command channel for emergency traffic as needed for duration of the need.</li> </ul> <p><b>Camp Emergency</b> Contact Medical Unit with patient complaint/condition and location. Medical staff will respond and contact:</p> <ol style="list-style-type: none"> <li>1. Communications</li> <li>2. Safety</li> <li>3. Logistics</li> <li>4. Operations</li> <li>5. Crew Supervisor</li> <li>6. Comp/Claims</li> </ol>	<p><b>Injury Reporting Procedures</b></p> <p>The following information should be relayed to the Communications Unit:</p> <p>Nature of Emergency: _____</p> <p>Chief Complaint: _____</p> <p>Location of Patient: _____</p> <p>Patient Age: _____</p> <p>Patient Unit ID: _____</p> <p>Point of Contact ID: _____</p> <p>Resource Needs: _____</p> <p>Transportation Requested by: Air _____ Ground _____</p> <p>Point of Pick-Up: _____</p> <p style="margin-left: 40px;">Lat: _____</p> <p style="margin-left: 40px;">Long: _____</p> <p>Is an EMT or Paramedic with Patient: Yes _____ No _____</p> <p style="text-align: center;">All Emergencies:</p> <p style="text-align: center; font-weight: bold;">Red Bluff (530) 529-8542</p> <p>Secure the area and identify witnesses for later investigation. Keep accurate log of events.</p>		

<b>7. Prepared by (Medical Unit Leader):</b> L. Mac Alpine	Signature:	
<b>8. Approved by (Safety Officer):</b> J. Novak	Signature:	
ICS 206	Date/Time:	8/29/24 1700





## Branches/Divisions/Groups

<b>CHESTER ICP</b>	<b>EMS Personnel:</b>	<b>(EMPF) Connor Borum, (EMPF) Gabriel Aubert, Curt McKinney (MEDL) Curt Christy (Field MEDL) Kevin Short MEDL(t)</b>
	<b>Equipment Available on Scene:</b>	ALS Kit
	<b>Medical Emergency Channel:</b>	<b>Command:</b> Command 7,8,9, and 10
	<b>Travel Time to ICP:</b>	
<b>BRANCH XV GROUP 5</b>	<b>EMS Personnel:</b>	<b>AMBO 1: Michael Lopez (EMPF) 559-972-4354</b>
	<b>Equipment Available on Scene:</b>	ALS Ambulance
	<b>Medical Emergency Channel:</b>	<b>Command:</b> Command 7,8,9, and 10
	<b>Travel Time to ICP:</b>	Approx: 2 hours
<b>BRANCH XV ROADS</b>	<b>EMS Personnel:</b>	<b>AMBO 2: Austin Moede (EMPF) 602-881-1378</b>
	<b>Equipment Available on Scene:</b>	ALS 4x4 Ambulance
	<b>Medical Emergency Channel:</b>	<b>Command:</b> Command 7,8,9, and 10
	<b>Travel Time to ICP:</b>	Approx: 2 hours
<b>BRANCH XV HAZARD</b>	<b>EMS Personnel:</b>	
	<b>Equipment Available on Scene:</b>	ALS 4X4 Ambulance
	<b>Medical Emergency Channel:</b>	<b>Command:</b> Command 7,8,9, and 10
	<b>Travel Time to ICP:</b>	Approx: 2 hours
<b>BRANCH XVIII GROUP 7</b>	<b>EMS Personnel:</b>	<b>AMBO 4: Morgan Shoup (EMTF) 720-233-7323</b>
	<b>Equipment Available on Scene:</b>	BLS Ambulance
	<b>Medical Emergency Channel:</b>	<b>Command:</b> Command 7,8,9, and 10
	<b>Travel Time to ICP:</b>	Approx: 2 hours
<b>Kevin Short MEDL(t) Kevin Short /s/</b>	<b>Date: 8-29-2024</b>	<b>Ricky Cox SOFC Ricky Cox /s/</b>

# MEDICAL PLAN (ICS 206 WF)

Controlled Unclassified Information//Basic

## Medical Incident Report

FOR A NON-EMERGENCY INCIDENT, WORK THROUGH CHAIN OF COMMAND TO REPORT AND TRANSPORT INJURED PERSONNEL AS NECESSARY.

FOR A MEDICAL EMERGENCY: IDENTIFY ON-SCENE INCIDENT COMMANDER BY NAME AND POSITION AND ANNOUNCE **"MEDICAL EMERGENCY"** TO INITIATE RESPONSE FROM IMT COMMUNICATIONS/DISPATCH.

Use the following items to communicate situation to communications/dispatch.

**1. CONTACT COMMUNICATIONS / DISPATCH (Verify correct frequency prior to starting report)**

*Ex: "Communications, Div. Alpha. Stand-by for Emergency Traffic."*

**2. INCIDENT STATUS: Provide incident summary (including number of patients) and command structure.**

*Ex: "Communications, I have a Red priority patient, unconscious, struck by a falling tree. Requesting air ambulance to Forest Road 1 at (Lat./Long.) This will be the Trout Meadow Medical, IC is TFLD Jones. EMT Smith is providing medical care."*

Severity of Emergency / Transport Priority	<input type="checkbox"/> <b>RED / PRIORITY 1 Life or limb threatening injury or illness. Evacuation need is IMMEDIATE</b> <i>Ex: Unconscious, difficulty breathing, bleeding severely, 2° – 3° burns more than 4 palm sizes, heat stroke, disoriented.</i> <input type="checkbox"/> <b>YELLOW / PRIORITY 2 Serious Injury or illness. Evacuation may be DELAYED if necessary.</b> <i>Ex: Significant trauma, unable to walk, 2° – 3° burns not more than 1-3 palm sizes.</i> <input type="checkbox"/> <b>GREEN / PRIORITY 3 Minor Injury or illness. Non-Emergency transport</b> <i>Ex: Sprains, strains, minor heat-related illness.</i>	
Nature of Injury or Illness & Mechanism of Injury		<i>Brief Summary of Injury or Illness (Ex: Unconscious, Struck by Falling Tree)</i>
Evacuation Request		<i>Air Ambulance / Short Haul/Hoist Ground Ambulance / Other</i>
Patient Location		<i>Descriptive Location &amp; Lat. / Long. (WGS84)</i>
Incident Name		<i>Geographic Name + Medical (Ex: Trout Meadow Medical)</i>
On-Scene Incident Commander		<i>Name of on-scene IC of Incident within an Incident (Ex: TFLD Jones)</i>
Patient Care		<i>Name of Care Provider (Ex: EMT Smith)</i>

**3. INITIAL PATIENT ASSESSMENT: Complete this section for each patient as applicable (start with the most severe patient)**

Patient Assessment: See IRPG PAGE 106

Treatment:

**4. EVACUATION PLAN:**

Evacuation Location (if different): (Descriptive Location (drop point, intersection, etc.) or Lat. / Long.) Patient's ETA to Evacuation Location:

Helispot / Extraction Site Size and Hazards:

**5. ADDITIONAL RESOURCES / EQUIPMENT NEEDS:**

*Example: Paramedic/EMT, crews, immobilization devices, AED, oxygen, trauma bag, IV/fluid(s), splints, rope rescue, wheeled litter, HAZMAT, extrication*

**6. COMMUNICATIONS: Identify State Air/Ground EMS Frequencies and Hospital Contacts as applicable**

Function	Channel Name/Number	Receive (RX)	Tone/NAC *	Transmit (TX)	Tone/NAC *
COMMAND					
AIR-TO-GRND					
TACTICAL					

**7. CONTINGENCY: Considerations: If primary options fail, what actions can be implemented in conjunction with primary evacuation method? Be thinking ahead.**

**8. ADDITIONAL INFORMATION: Updates/Changes, etc.**

**REMEMBER:** Confirm ETAs of resources ordered. Act according to your level of training. Be Alert. Keep Calm. Think Clearly. Act Decisively.



# SRA EMERGENCY FIRE SUPPRESSION REPAIR PLAN – PARK INCIDENT - CA-BTU-013761

LASSEN NF & SRA FULL FIRE SUPPRESSION REPAIR PLAN in QR CODE→



**Fire Suppression Repair** is the repair of damage caused directly from fire suppression activities. It is not the repair of infrastructure or rehabilitation of burned areas caused by the fire. We cannot upgrade facilities beyond their pre-fire condition. Fire suppression repair shall be applied to mitigate infrastructure damage and natural resource damage. Any projects too large or complicated to be completed by the Fire Suppression Repair Group shall be turned over to the Comp Claims Unit. To the extent feasible, repair work should start as soon as practical. However, repair activities shall not hamper or conflict with fire suppression actions. When possible, construct waterbreaks (waterbars) on all dozer lines, handlines, and safety zones concurrent with line construction or mop-up operations.

**Infrastructure Damage:** Report the location and type of suppression damage to infrastructure. Common examples of such features include: Fences, gates, culverts, bridges, other watercourse crossings, water sources, utility distribution line(above/below ground), barriers on roads previously closed but opened for suppression activities and miscellaneous damage to residential property.

**Natural Resource Damage:** Repair of damage caused by fire suppression activities (direct effect) to natural resources and to prevent likely future problems such as accelerated erosion caused by rains (indirect effect). The goal is to minimize soil erosion, adverse impacts to water quality, and adverse impacts to protected species of plants and animals.

- Construct waterbars on all dozer and hand lines according to the following specifications: Waterbreaks shall be cut diagonally with a minimum depth of 6” into existing grade with a 12” berm for a minimum height of 18”. Waterbreaks will be installed at a 30–45-degree angle. Outlets shall be open and directed onto least erodible material possible.

## REPAIR GUIDELINES

**General:** Restore berms and barriers removed for fire control access unless necessary to divert runoff from a sensitive site. Clean culvert inlet and outlets and drainage facilities plugged with soil and debris by fire suppression activities. All slash, soil, and debris deposited into watercourses shall be removed and stabilized. Remove trash and debris, including flagging and signs when no longer needed. Report major water damage & damaged culverts to the Fire Suppression Repair Specialist for specific repair guidance.

**Drop Points/Staging Areas/Safety Zones:** New construction - cross drain and abandon (if applicable). Existing areas- repair to original condition. Remove debris resulting from use. Pick up all trash.

**Roads:** Construct drivable waterbars or rolling dips on unsurfaced roads that were used during fire control operations. Roads should be out sloped with rolling dips where degradation of the road prism has resulted from fire control operations.

Road gradient (%):	<u>0-10</u>	<u>11-25</u>	<u>&gt;25</u>
Road waterbreak or spacing:	150'	100'	75'

**Firelines:** Break apart dozer piles of pushed over trees, vegetation and soil, and spread along tractor roads, tractor fire breaks, or any other areas disturbed during fire suppression activities not intended for maintenance as a strategically placed firebreak. Lop and scatter displaced vegetation to a height of 18 inches or less or chip within 100’ of a public or unlocked private road or structure. Scatter the lopped material along the fire line. Pull back any excess soil material sidecast along roads or tractor disturbed areas that are located within 100 feet of any watercourse or spring. Install waterbreaks on all constructed or used dozer lines using the following criteria:

Fireline gradient (%):	<u>0-25</u>	<u>26-50</u>	<u>&gt;50</u>
Fireline waterbreak spacing:	100'	75'	50'

**Handlines:** Install waterbreaks as needed based on slope and soil erodibility.

**Slash Piles:** Piles within 100’ of permanent structures or public roads will be lopped and/or scattered within 18” of the soil surface. Piles along roads and fences: Lop to fire protection standards (generally to lengths that can be carried by hand) to ensure decreased fire risk is obtained. Scatter smaller debris where applicable.

**Waterbreaks and/or rolling dips:** shall be used to reduce the volume and velocity of water by directing it off fire lines as soon as possible at controlled locations. All waterbreaks shall be installed diagonally with a minimum cut of 6” into existing grade, and minimum height of 12”. Waterbreaks shall be constructed to allow for drainage at the discharge end into non-erodible material. The outfall end of all waterbreaks shall be opened by hand if necessary. Waterbreaks should be located to discharge into natural vegetation. Waterbreaks should cross the fire line at an angle of approximately 45 degrees.

**Watercourse Crossings:** All slash, soil, and debris deposited into watercourses resulting from fire suppression activities shall be removed and stabilized above the high-water line. Where fire lines are constructed within 100’ of flowing watercourses, slash or straw mulching will be applied. All loose soil must be pulled away from the watercourse and stabilized. All work within 100 feet of a watercourse, cultural site or other sensitive location shall be performed by hand crews to avoid further damage.

**Archaeological or Historic Sites:** Report any disturbance to a known or suspected archaeological/historical site the incident Archaeologist and/or the Fireline Suppression Repair Group immediately. This includes any air tanker drops upon a site. All potential sites shall be avoided. Use least disturbing suppression methods possible unless life safety is at risk. Flag site perimeter for identification. Removing or disturbing any artifact is not permissible.



# FINANCE MESSAGE PARK INCIDENT CA-BTU-013761



- **PARK INCIDENT FINANCE (TIME & HIRED EQUIPMENT) WILL BE LOCATED AT THE TEHAMA FAIRGROUNDS UNTIL SEPTEMBER 3<sup>rd</sup>.**
- **STARTING SEPTEMBER 4<sup>th</sup> FINANCE WILL BE LOCATED AT THE RED LION HOTEL IN REDDING CA.**
- **CAL FIRE TIME UNIT (Personnel & Hired Equipment):**
  - CAL FIRE PERSONNEL – Make sure you have started your eFC-33 and update after each shift. Please make sure ePay schedules are up to date.
  - HIRED EQUIPMENT SUPPLIERS – Check in with the Time Unit and drop off your agreements.
- **LINE SUPERVISORS**
  - Turn in hired equipment shift tickets at the end of each shift.
- **SHIFT TICKET DROP-OFF LOCATIONS**
  - **UNTIL September 3<sup>rd</sup>**
    - TIME Unit in Finance Building at Tehama Fairgrounds.
  - **AFTER September 3<sup>rd</sup>**
    - Logistics trailer in the front of the Tehama Fairgrounds  
650 Antelope Blvd, Red Bluff, CA 96080.
- **COMP / CLAIMS**
  - Josh.Chastain@fire.ca.gov / Contact Number: (530) 922-0131
- **DAMAGE CLAIMS** (suppression, property, vehicle etc.)
  - Report on an ICS-213 including location, description of damages, and your contact information.
- **PROCUREMENT**
  - Please send Team Agreement FC-33 to the Procurement Unit Leader Ray Leanos at [Raymond.Leanos@fire.ca.gov](mailto:Raymond.Leanos@fire.ca.gov)
  - For any Procurement questions reach out to Ray Leanos at (909) 489-6430
- **INJURIES**
  - Please report all injuries and suppression damage to Comp / Claims no matter how minor.
- **Finance Section Chiefs**
  - Joe Tapia, FSC1
  - Michael Lamonica, Deputy FSC1





# SHIFT TICKET MESSAGE

## PARK INCIDENT

### CA-BTU-013761



# SHIFT TICKET EXAMPLE

EMERGENCY SHIFT TICKET and EVALUATION FORM						Contractor Name <b>DOZER DUDE</b>			
Incident or Project Name <b>PARK</b>		Incident Number <b>CABTU013761</b>		Request Number <b>E# HERE</b>		Operator #1 <b>BOB SMITH</b>		Operator #2 <b>TOM SMITH</b>	
Agreement Number						FISCAL ID #			
Equipment Make <b>CAT</b>				Equipment Model / Type <b>D6XM, TYPE II DOZER</b>				Operator Furnished By: <input checked="" type="checkbox"/> Contractor <input type="checkbox"/> Government	
Serial Number <b>12345678</b>				License Number <b>1234567</b>				Operating Supplies Furnished By: <input checked="" type="checkbox"/> Contractor <input type="checkbox"/> Government	
Equipment Use						Equipment Status			
(Circle) <b>Hours</b> Days / Miles						<input checked="" type="checkbox"/> Inspected <input type="checkbox"/> Under Agreement			
Date						Released by Government			
Mo / Day						Withdrawn by Contractor			
Start		Stop		Work		Remarks/Comments **			
<b>0700</b>		<b>2400</b>		<b>17</b>					
<b>8/19</b>				<b>DIV M</b>					
<b>8/20</b>		<b>0700</b>		<b>7</b>					
Vendor Rating						Govt. Rep. Name and Position - PRINT <b>Mike Weber</b>			
Poor* Avg. Good Exc. N/A						Govt. Rep. Signature <i>Mike Weber</i>			
Met Performance Expectations						Contractor Signature <i>Bob Smith</i>			
Equipment in Safe Working Condition						Date <b>08/20/24</b>			
Operator Skill Level						Time <b>0800</b>			
Operates Safely						CALFIRE 297 (Rev 3-2011)			
Operator's Cooperation Level									
Overall Performance									
* NOTE: Any rating of POOR requires an explanation in Comment Section.									
**Final evaluation or for more documentation, use an ICS Form 230 or equivalent.									
Pink - Finance		Blue - Home Unit HE Coordinator		Yellow - Vendor		White - Govt Representative			

**24 HOUR RESOURCE**

EMERGENCY SHIFT TICKET and EVALUATION FORM						Contractor Name <b>RUNNER Co.</b>			
Incident or Project Name <b>PARK</b>		Incident Number <b>CABTU013761</b>		Request Number <b>E # HERE</b>		Operator #1 <b>BOB SMITH</b>		Operator #2	
Agreement Number						FISCAL ID #			
Equipment Make <b>FORD</b>				Equipment Model / Type <b>STAKESIDE</b>				Operator Furnished By: <input checked="" type="checkbox"/> Contractor <input type="checkbox"/> Government	
Serial Number <b>12345678</b>				License Number <b>1234567</b>				Operating Supplies Furnished By: <input checked="" type="checkbox"/> Contractor <input type="checkbox"/> Government	
Equipment Use						Equipment Status			
(Circle) <b>Hours</b> Days / Miles						<input checked="" type="checkbox"/> Inspected <input type="checkbox"/> Under Agreement			
Date						Released by Government			
Mo / Day						Withdrawn by Contractor			
Start		Stop		Work		Remarks/Comments **			
<b>0700</b>		<b>1900</b>		<b>12</b>					
<b>8/19</b>				<b>DIV M</b>					
Vendor Rating						Govt. Rep. Name and Position - PRINT <b>Mike Weber</b>			
Poor* Avg. Good Exc. N/A						Govt. Rep. Signature <i>Mike Weber</i>			
Met Performance Expectations						Contractor Signature <i>Bob Smith</i>			
Equipment in Safe Working Condition						Date <b>08/19/24</b>			
Operator Skill Level						Time <b>2000</b>			
Operates Safely						CALFIRE 297 (Rev 3-2011)			
Operator's Cooperation Level									
Overall Performance									
* NOTE: Any rating of POOR requires an explanation in Comment Section.									
**Final evaluation or for more documentation, use an ICS Form 230 or equivalent.									
Pink - Finance		Blue - Home Unit HE Coordinator		Yellow - Vendor		White - Govt Representative			

**12 HOUR RESOURCE**

**Turn shift tickets into Time Unit.**

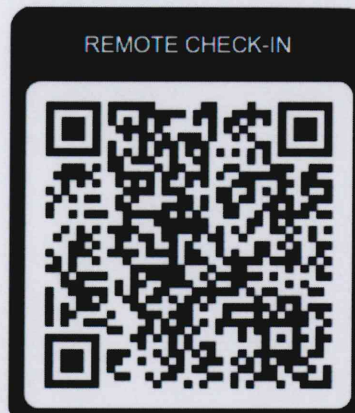


# CHECK-IN & DMOB MESSAGE PARK INCIDENT CA-BTU-013761



## CHECK-IN

- ALL resources must check in at the Tehama Base or use the Remote Check-In QR Code below.



## DEMOBILIZATION (DMOB)

- To begin the DMOB process, supervisors must submit an ICS-213 to the Resources Unit.
- Resources must report to DMOB at the time identified on the Tentative DMOB List. Do not arrive prior to your scheduled time.
- Prior to reporting to DMOB, please return all supplies and equipment.
- Resources are required to get signatures from the following sections:
  - Motels
  - Supply
  - Ground Support
  - Training (for any Trainees)
  - Communications
  - Time
  - DMOB





TENTATIVE DEMOB LIST  
8/30/2024  
PLEASE REPORT TO DEMOB



REQ #	RESOURCE ID	TIMED OUT?	TIME
E-1682/E-1684	GRD/LOW 4C		0730
E-1769/E-1770	GRD/LOW MILLER		0730
E-451/E-462	MAS/LOW WPS		0800
E-852/E-992	FEL/LOW HARD		0800
E-2021/E-2025	EXC/LOW ASHBROOK		0800
E-2170/E-2171	MUL/LOW GILDO		0800
E-2204/E-2212	EXC/LOW BONDIO		0800
E-402	WT FIRESTORM		0800
E-753	WT HOLMES		0800
E-1015	WT HILLTOP		0800
E-1837	WT H.B. WELLS		0800
E-1982	WT CHAD PANKEY		0800
O-1337	SILVA, JOEY	Y	0800
O-1492	DIAZ, RUDY		0800
O-1537	CARVALHO, WALKER		0800
O-1541	SPEARS, SETH	Y	0800
O-1591	NETZ, PAUL	Y	0800
O-1658	ESCANDEL, MATTHEW	Y	0800
O-30076	CLARK, JULIE		0800
E-902	ENG MOUNTAIN CAMEL		0830
O-1073	FITZGERALD, ROWDY	Y	0830
O-1664	TREVETHICK, TRAVIS		0830
O-1709	INWOOD, CHANCE		0830
E-308/E-509	DOZ/LOW ARCH		0900
E-1349/E-1367	DOZ/LOW DIAMOND		0900
E-1438/E-1442	FEL/LOW LESLIE		0900
E-387	WT IRON RESPONSE		0900
E-1839	WT CA FIRE LINE		0900
E-1958	WT ADAMS		0900
E-1960	WT WOVET		0900
E-2037	WT FORTNER		0900
O-552	PARTIDA, ZULEIMA	Y	0900
O-709	CAL-MAT #1		0900
O-1048	FALM WEST MOUNTAIN	Y	0900
O-1388	SASSEN, TYLER		0900
O-1756	STEELE, ANDREW		0900
E-338/E-595	DOZ/LOW TRESSLERS		0930
E-849/E-989	FEL/LOW LESLIE		0930
E-396	WT FIRE SUPPORT		0930
E-55/E-70	DOZ/LOW 4C		1000
E-56	DOZ 4C		1000
E-2226/E-2227	MUL/LOW GENERAL		1000
E-543	WT FUNES		1000
E-756	WT DUDLEYS		1000
E-762	WT GARR		1000
E-1843	WT JACKIES		1000
E-126/E-186	DOZ/LOW WURLITZER		1030
E-127/E-187	DOZ/LOW WURLITZER		1030
E-2189/E-2223	MAS/LOW GROTEGUTH		1030
E-1955	WT CHRISTMAS		1030
E-1981	WT AFS		1030
E-1678	WT ALLANS		1030
O-569	DYSTHE, DANA	Y	1030

REQ #	RESOURCE ID	TIMED OUT?	TIME
O-1538	ORCUTT, JOSHUA		1030
O-1539	RODGERS, FRANK		1030
E-1038/E-1045	EXC/LOW LEPAGE		1100
E-1509	EXC LASSEN		1100
E-1706	CHIP ALL PHASE		1100
E-1725	CHIP MORGAN		1100
E-1190	WT BLACK KNIGHT		1100
E-1676	WT REID'S		1100
E-1689/E-1692	SKID/LOW PIERSON		1130
E-1772/E-1776	GRD/LOW B&G FARM		1130
E-1913/E-1924	EXC/LOW ACT FAST		1130
E-765	WT 3J		1130
E-2033	WT BENS		1130
E-2038	WT CODY LAMB		1130
E-2039	WT AWM		1130
E-883	TRL CROSS CONNECTIONS		1230
E-2102/E-2107	EXC/LOW MURDOCK		1230
E-2130/E-2141	EXC/LOW GREGORY		1230
E-2133/E-2144	EXC/LOW BRANSON		1230
O-1054	FALM MOUTAIN AIR		1230
O-1055	FALM MOUTAIN AIR		1230
O-1406	MARTINEZ, MARTIN		1230
E-1020	TRL BIG TIMBER		1300
E-1916/E-1927	EXC/LOW TIMBERSMITH		1300
E-2166	MAS TRESSLERS		1300
E-2167	LOW GENERAL		1300
E-2176	LOGL CUT WRIGHT		1300
E-2181	LOW DAVE RICHARDSON		1300
O-915	FALM WRIGHT		1300
E-1043	FEL WARNER		1330
E-1050	LOW RICHARDSON		1330
E-1642/E-1652	EXC/LOW GILES		1330
E-2175	LOGL WARNER ENT		1330
E-2180	LOW RICHADSON		1330
E-131/E-192	DOW/LOW GILES		1400
E-885	TRL TOZIER		1400
E-1624	WT BURKES		1400
E-1101/E-1105	FEL/LOW RAYGOZA		1400
E-1357/E-1376	EXC/LOW GENERAL		1400
E-1788	CHIP TIMBERSMITH		1430
E-1789	CHIP TIMBERSMITH		1430
E-1905/E-1909	EXC/LOW DUDLEYS EXC		1430
E-690	AMB MOUNTAIN MEDICS		1500
E-545	TRL TOZIER		1530
E-880	TRL TOZIER		1530
E-881	TRL TOZIER		1530
E-884	TRL TOZIER		1530
O-937	GOMEZ, LEONARDO	Y	1530
O-1108	DAVE, DURHAM		1530
O-1405	CALFY, KYRA	Y	1530
E-998	FKL ALL AMERICAN		1700
E-1024	TRL TOZIER		1700
E-1491	TRL ALL AMERICAN		1800

PLEASE REPORT AT YOUR ASSIGNED TIME



# GROUND SUPPORT MESSAGE PARK INCIDENT CA-BTU-013761

---



## **Tehama Base Camp**

- 680 Antelope Boulevard, Red Bluff, CA 96080

## **Fuel Locations**

- Incident Base
  - **05:00 – 21:00 hours**
  - Mud Lake Oil

## **Repairs**

- 0700-1900 Scott Hogan (530) 708-2730

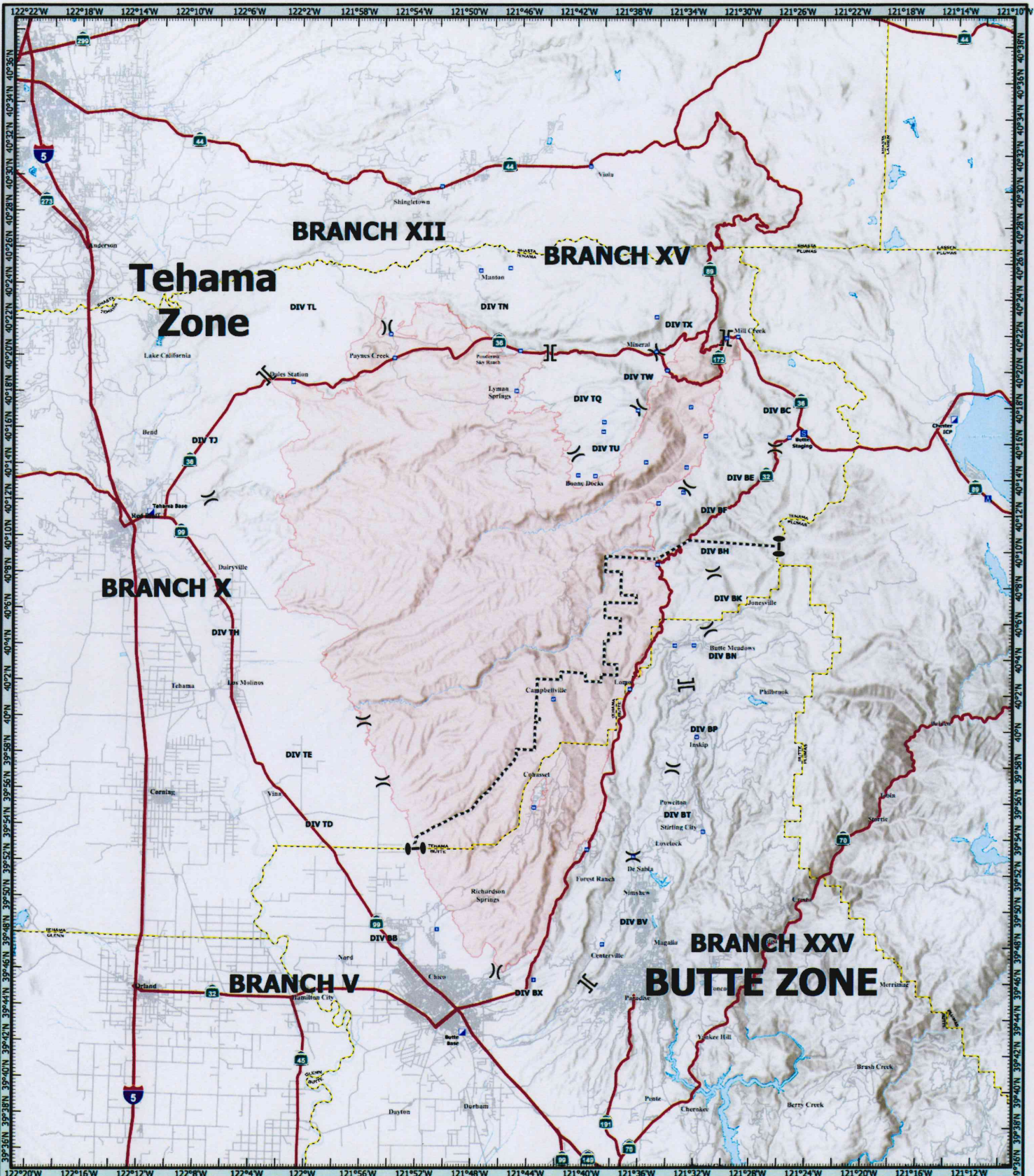
## **Transportation**

- Justin Flowers (209) 613-8728

## **Ground Support Unit Leaders (GSUL)**

- Jason Truelock, GSUL (209) 419-3678
- Hector Meza, GSUL (916) 640-7993
- Jeremy Christofferson, GSUL (951) 287-0886





# Tehama Zone

# BRANCH XV

# BRANCH X

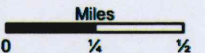
# BRANCH XXV BUTTE ZONE

# BRANCH V

## TRANSPORTATION Park Incident CA-BTU-013761



Datum: NAD 83 1:500,000



- X Division Break
- || Branch Break
- I Zone Break
- Incident Command Post
- Drop Point
- Camp
- Staging Area
- Zone Line
- County Boundary
- Wildfire Daily Fire Perimeter



**DISCLAIMER:**  
The displayed incident data is approximate and should only be used for informational purposes. The information contained in this report was generated from GIS data maintained by different sources and it is not necessarily accurate to mapping, surveying, or engineering standards.

MF 6-016  
8/25/2014  
4:28 PM





