

123°16'W

123°15'W

123°14'W

41°55'N

41°55'N

41°54'N

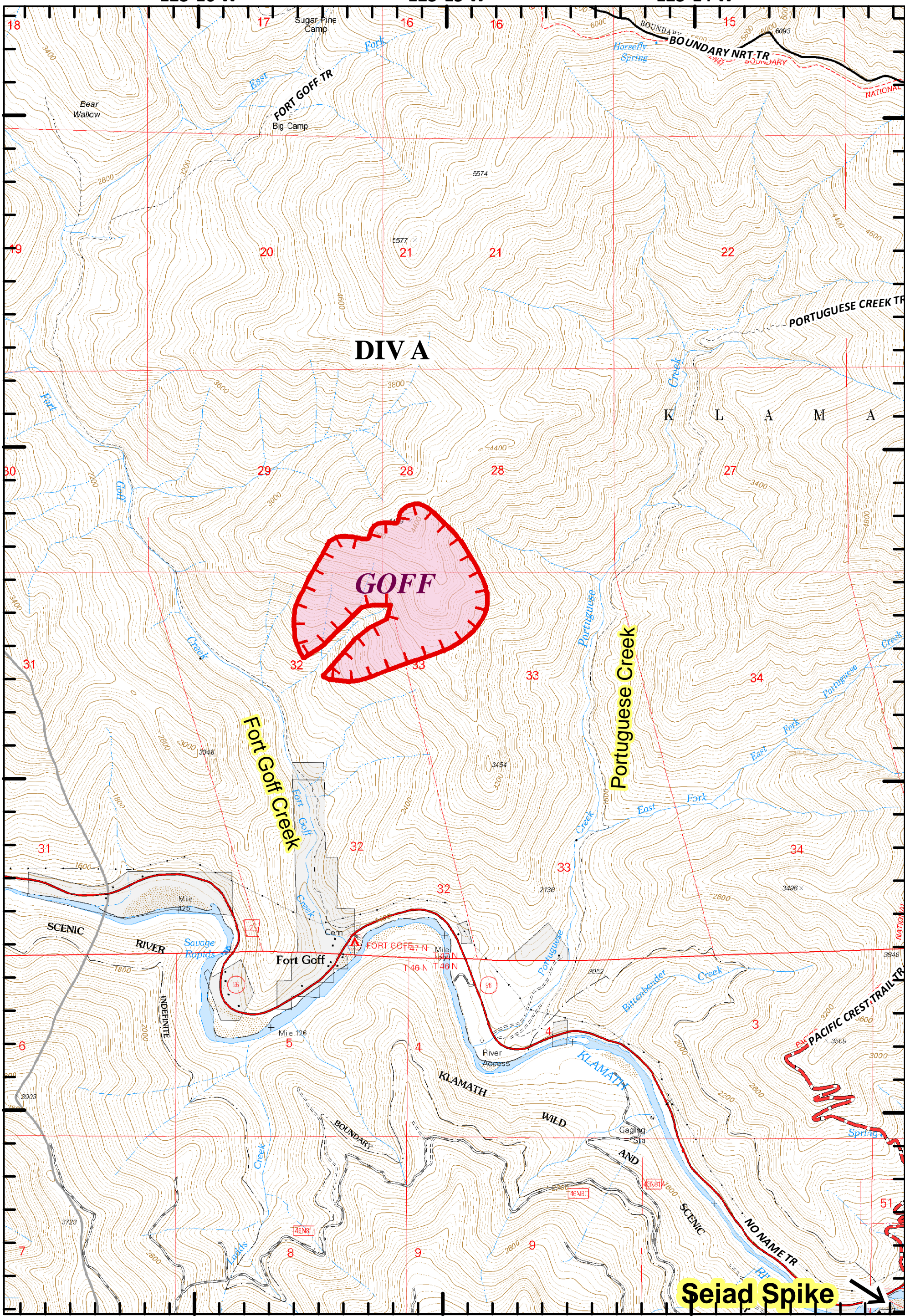
41°54'N

41°53'N

41°53'N

41°51'N

41°51'N



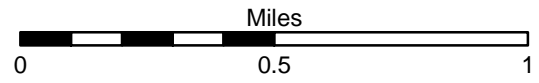
DIVA

GOFF

Sejad Spike

Fort Complex
 CA-KNF-0005659
 IAP
 8/10/2012
 DAY SHIFT
 Datum: NAD 83

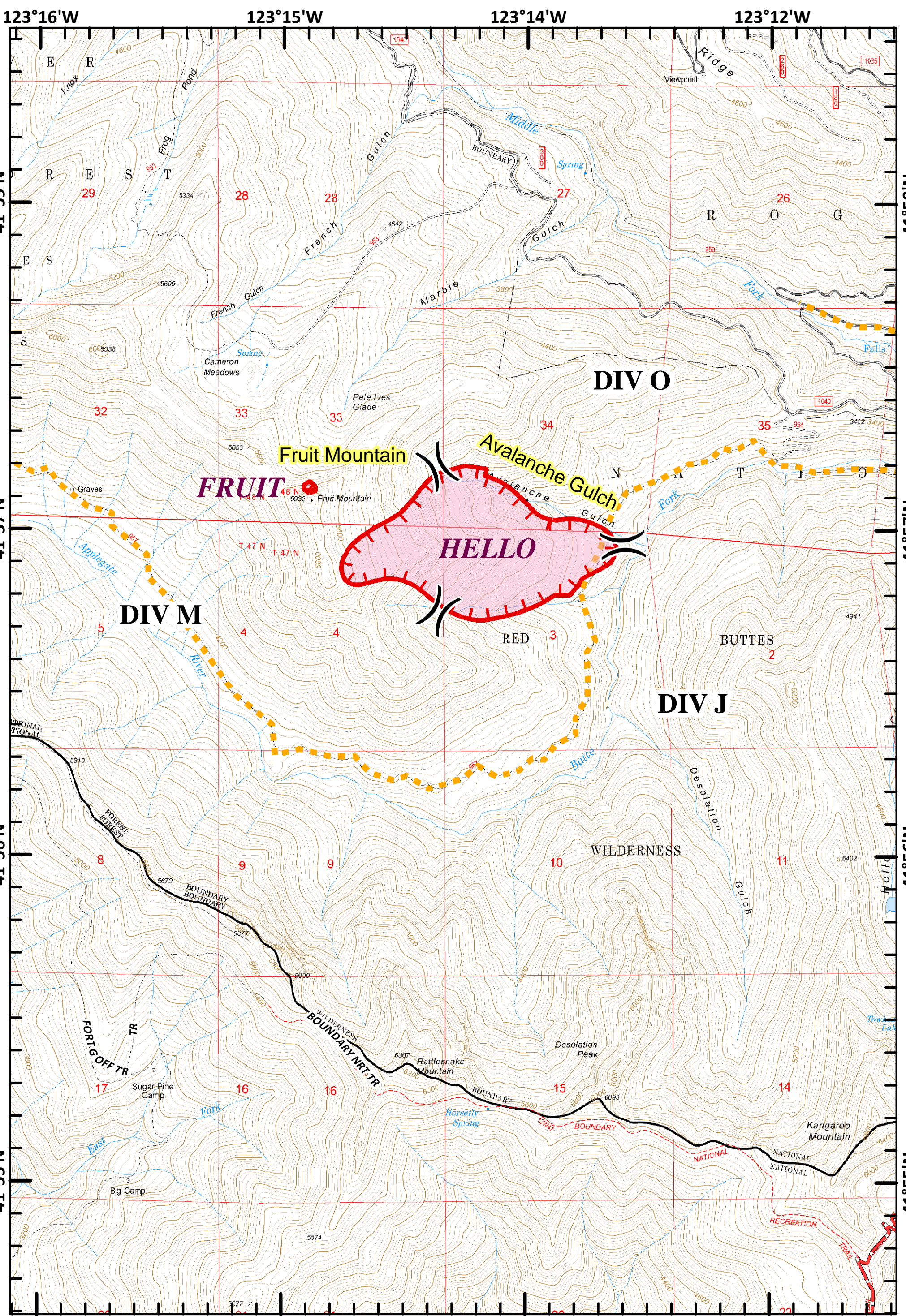
	Division		Camp
	Branch		Uncontrolled Fire Edge
			PACIFIC CREST TRAIL
			Route Closed
			Main Route Between Branches



MAP
 PAGE: GOFF

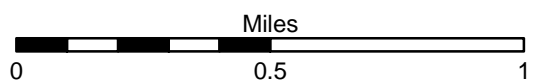


SoCal Team 1
 August 10, 2012
 0800 Hours



Fort Complex
 CA-KNF-0005659
 IAP
 8/10/2012
 DAY SHIFT
 Datum: NAD 83

	Division		Camp
	Branch		Uncontrolled Fire Edge
			PACIFIC CREST TRAIL
			Route Closed
			Main Route Between Branches



MAP
 PAGE: HELLO



SoCal Team 1
 August 10, 2012
 0800 Hours

123°11'W

123°10'W

123°9'W

42°0'N

42°0'N

41°59'N

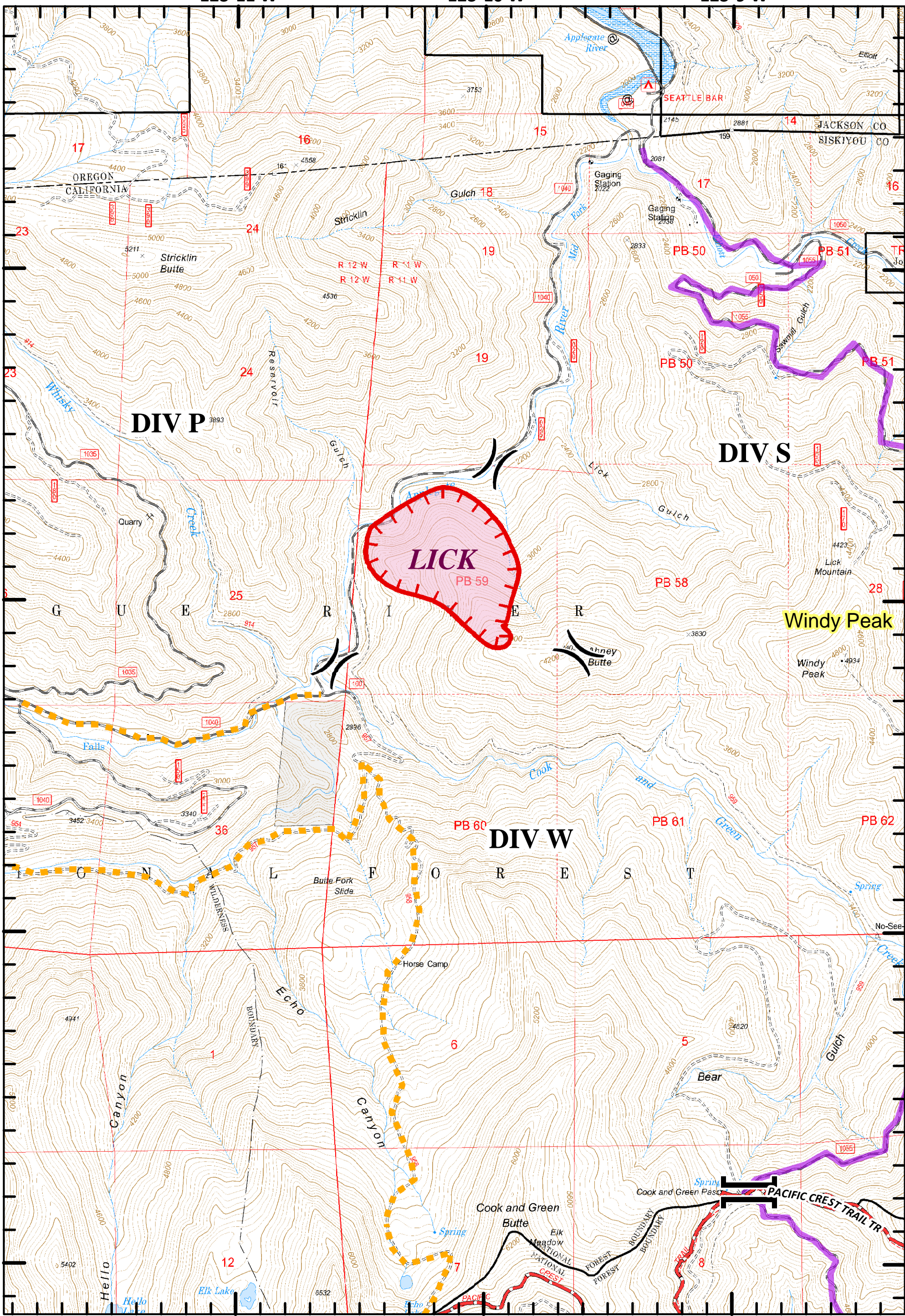
41°59'N

41°57'N

41°57'N

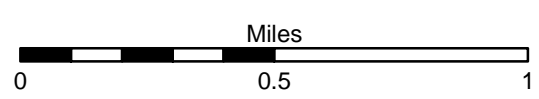
41°56'N

41°56'N



Fort Complex
 CA-KNF-0005659
 IAP
 8/10/2012
 DAY SHIFT
 Datum: NAD 83

	Division		Camp
	Branch		Uncontrolled Fire Edge
			PACIFIC CREST TRAIL
			Route Closed
			Main Route Between Branches



MAP
 PAGE: LICK



SoCal Team 1
 August 10, 2012
 0800 Hours