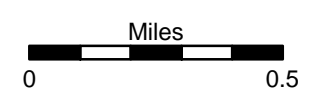


**Fort Complex**  
**CA-KNF-0005659**  
**IAP**  
**8/12/2012**  
**DAY SHIFT**  
**Datum: NAD 83**

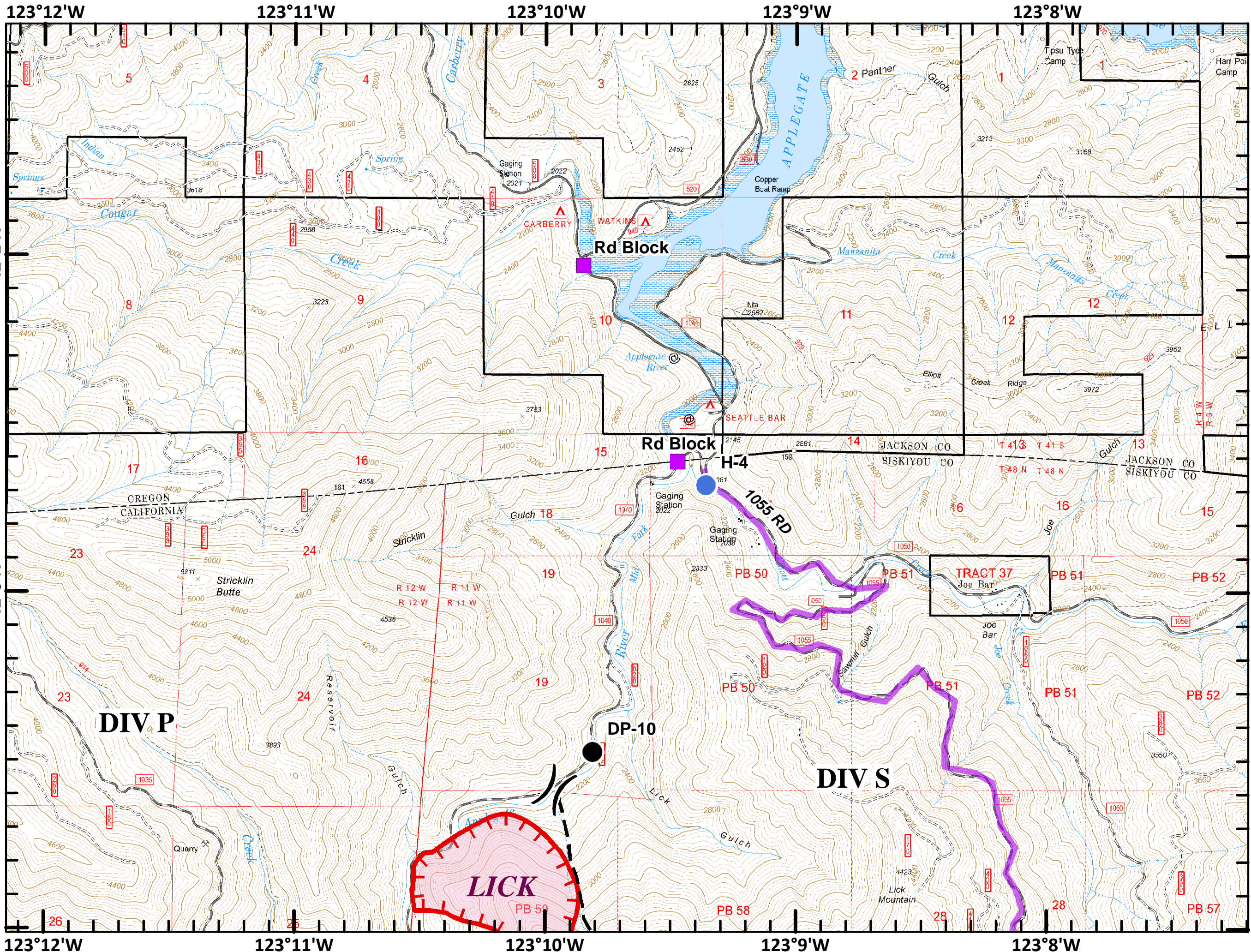
- Division
- Branch
- Uncontrolled Fire Edge
- Completed Contingency Line
- Proposed Contingency Line
- PACIFIC CREST TRAIL
- Other Trail
- Main Route Between Branches
- Closed Route
- Camp
- Drop Point
- Helibase
- Helispot
- MediVac Site
- Road Block
- Other

**MAP**  
**PAGE:**  
**1**



SoCal Team 1  
 August 11, 2012

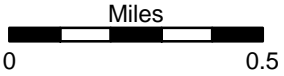




**Fort Complex**  
**CA-KNF-0005659**  
**IAP**  
**8/12/2012**  
**DAY SHIFT**  
**Datum: NAD 83**

	Division
	Branch
	Uncontrolled Fire Edge
	Completed Contingency Line
	Proposed Contingency Line
	PACIFIC CREST TRAIL
	Other Trail
	Main Route Between Branches Closed Route
	Camp
	Drop Point
	Helibase
	Helispot
	MediVac Site
	Road Block
	Other

**MAP PAGE:**  
**2**



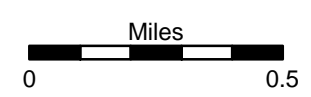
SoCal Team 1  
 August 11, 2012



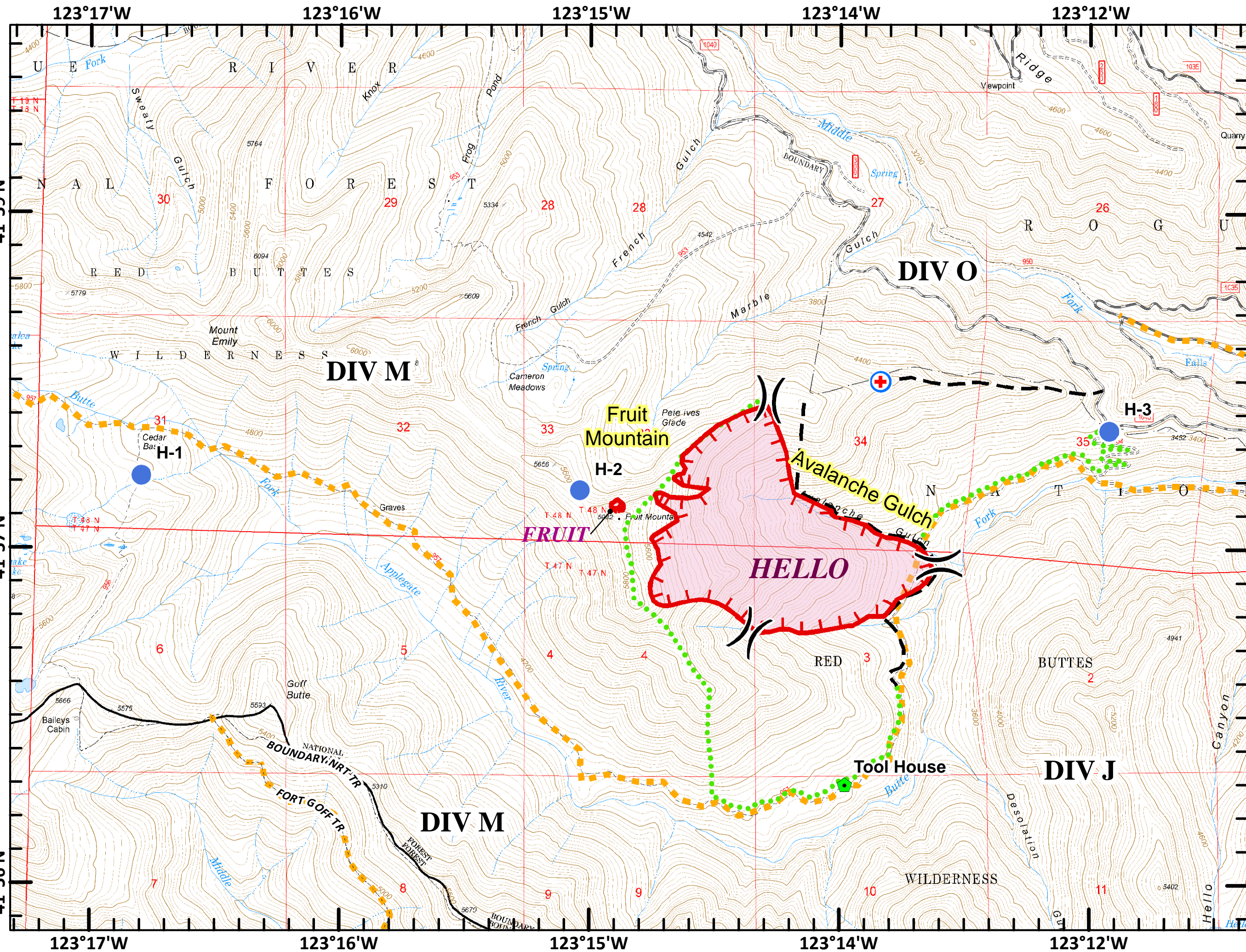
Fort Complex  
 CA-KNF-0005659  
 IAP  
 8/12/2012  
 DAY SHIFT  
 Datum: NAD 83

	Division
	Branch
	Uncontrolled Fire Edge
	Completed Contingency Line
	Proposed Contingency Line
	PACIFIC CREST TRAIL
	Other Trail
	Main Route Between Branches
	Closed Route
	Camp
	Drop Point
	Helibase
	Helispot
	MediVac Site
	Road Block
	Other

MAP  
 PAGE:  
 3



SoCal Team 1  
 August 11, 2012





123°12'W

123°11'W

123°10'W

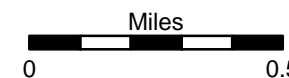
123°9'W

123°8'W

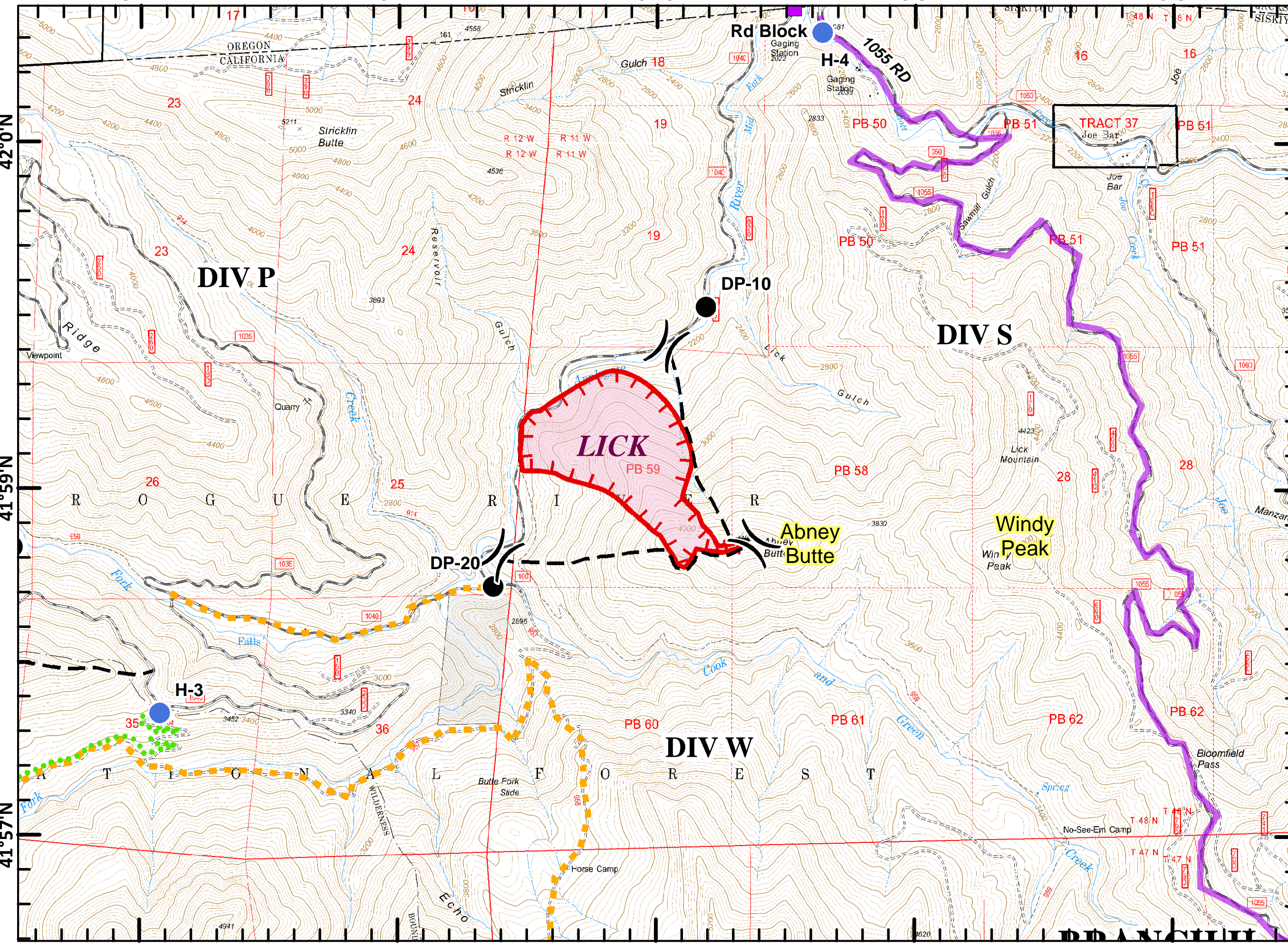
**Fort Complex**  
**CA-KNF-0005659**  
**IAP**  
**8/12/2012**  
**DAY SHIFT**  
**Datum: NAD 83**

- ( ) Division
- [ ] Branch
- Uncontrolled Fire Edge
- Completed Contingency Line
- Proposed Contingency Line
- PACIFIC CREST TRAIL
- Other Trail
- Main Route Between Branches
- Closed Route
- Camp
- Drop Point
- Helibase
- Helispot
- MediVac Site
- Road Block
- Other

**MAP PAGE:**  
**4**



SoCal Team 1  
 August 11, 2012



123°12'W

123°11'W

123°10'W

123°9'W

123°8'W

41°57'N

41°59'N

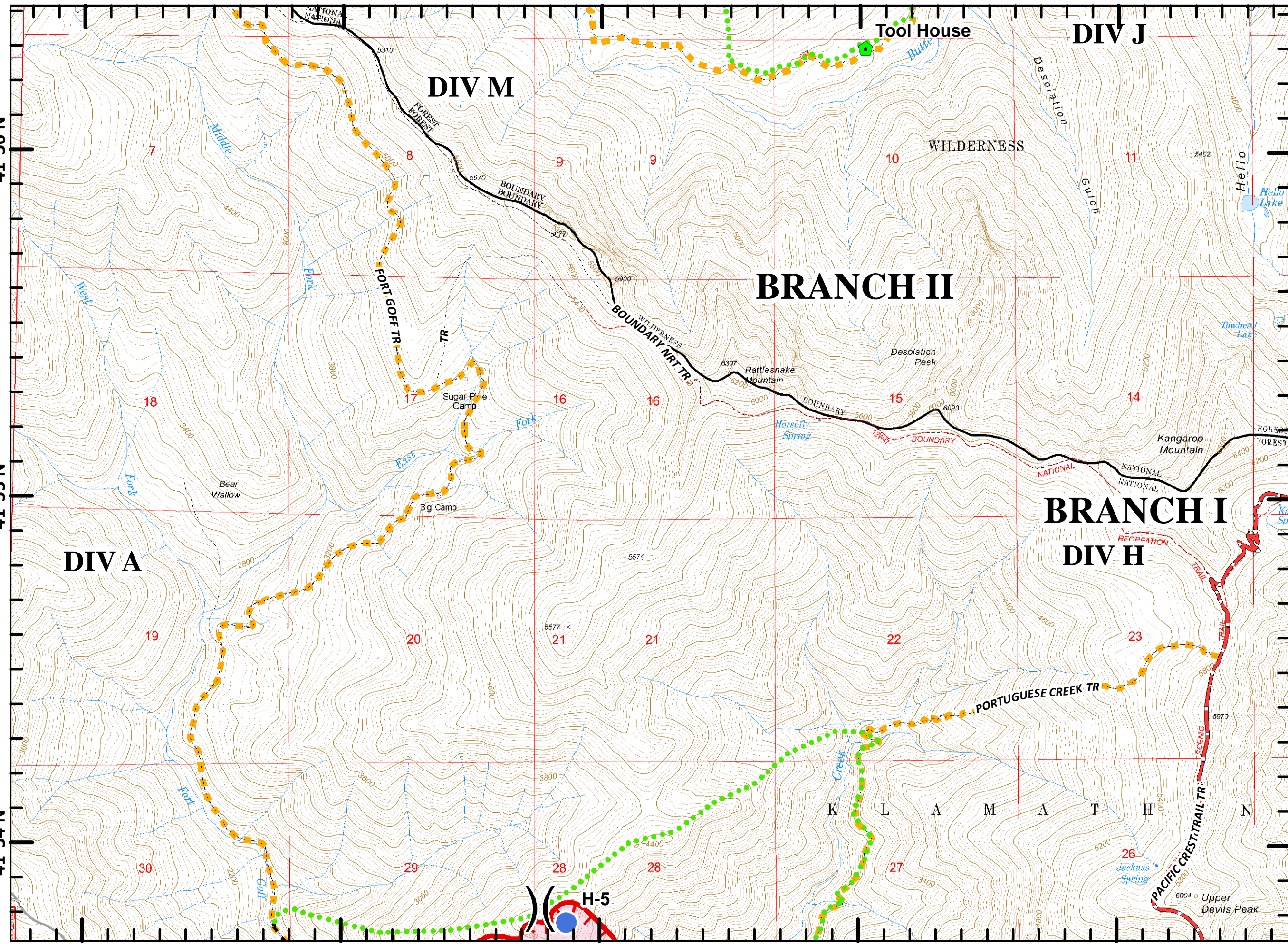
42°0'N



123°17'W 123°16'W 123°15'W 123°14'W 123°12'W

Fort Complex  
CA-KNF-0005659  
IAP  
8/12/2012  
DAY SHIFT  
Datum: NAD 83

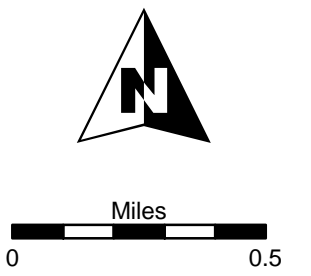
41°56'N  
41°55'N  
41°54'N



**Legend**

- Division
- Branch
- Uncontrolled Fire Edge
- Completed Contingency Line
- Proposed Contingency Line
- PACIFIC CREST TRAIL
- Other Trail
- Main Route Between Branches
- Closed Route
- Camp
- Drop Point
- Helibase
- Helispot
- MediVac Site
- Road Block
- Other

MAP PAGE:  
5



SoCal Team 1  
August 11, 2012

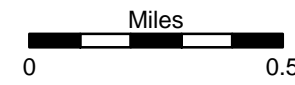
123°17'W 123°16'W 123°15'W 123°14'W 123°12'W



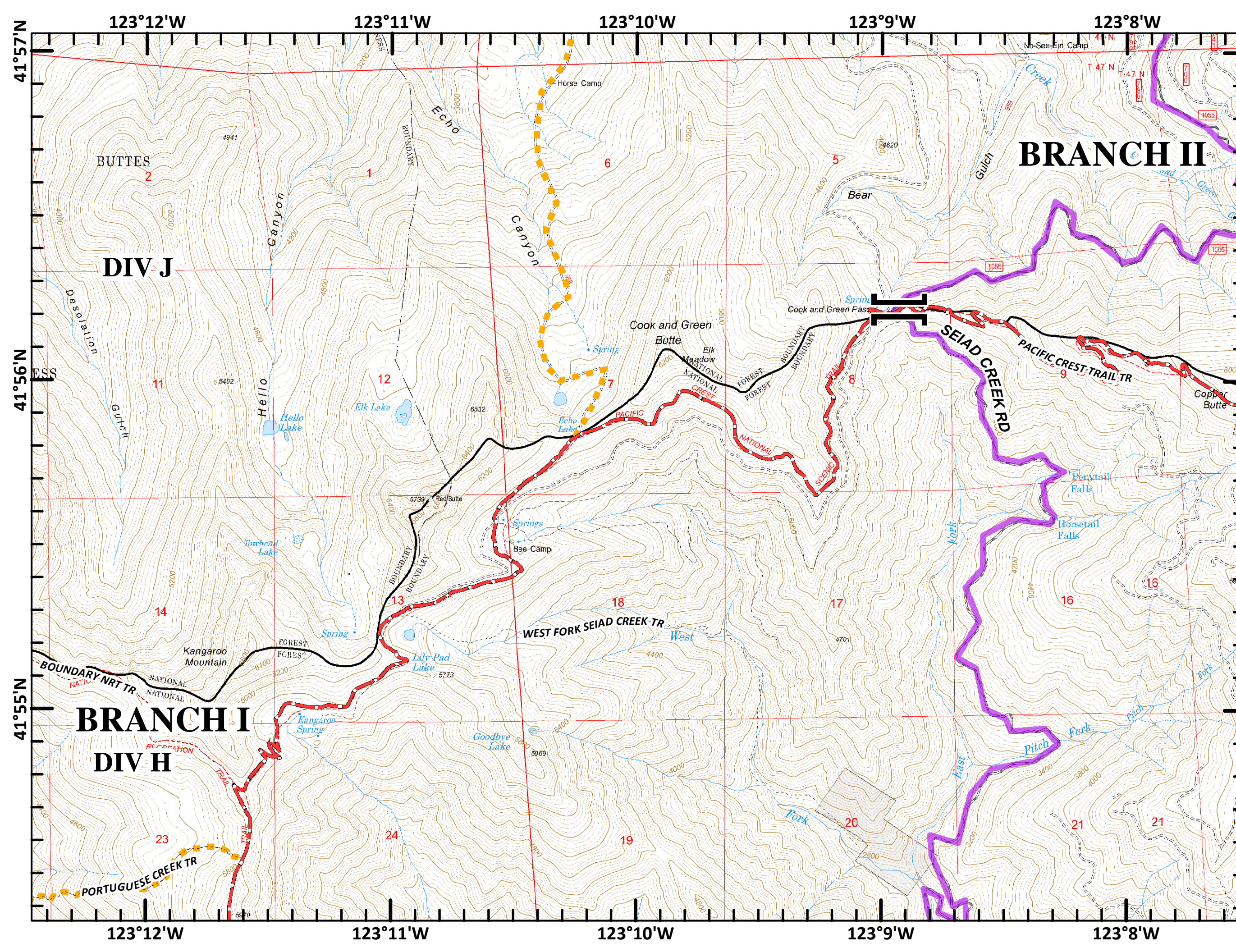
Fort Complex  
 CA-KNF-0005659  
 IAP  
 8/12/2012  
 DAY SHIFT  
 Datum: NAD 83

	Division
	Branch
	Uncontrolled Fire Edge
	Completed Contingency Line
	Proposed Contingency Line
	PACIFIC CREST TRAIL
	Other Trail
	Main Route Between Branches
	Closed Route
	Camp
	Drop Point
	Helibase
	Helispot
	MediVac Site
	Road Block
	Other

MAP  
 PAGE:  
 6



SoCal Team 1  
 August 11, 2012





123°17'W

123°16'W

123°15'W

123°14'W

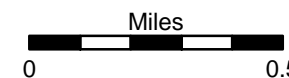
123°12'W

Fort Complex  
CA-KNF-0005659  
IAP  
8/12/2012  
DAY SHIFT  
Datum: NAD 83

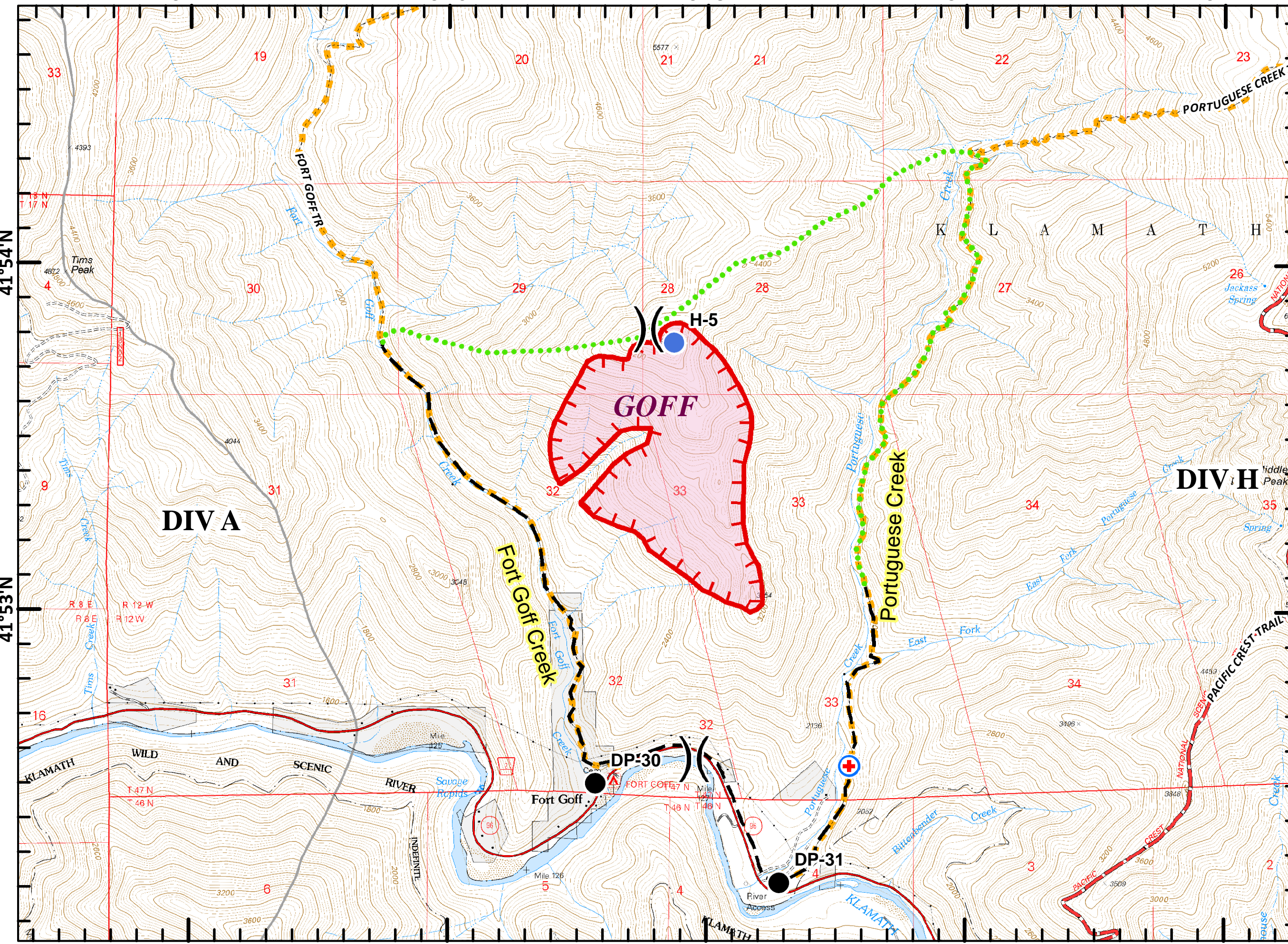
Legend:

- ( ) Division
- [ ] Branch
- Uncontrolled Fire Edge
- Completed Contingency Line
- Proposed Contingency Line
- PACIFIC CREST TRAIL
- Other Trail
- Main Route Between Branches
- Closed Route
- Camp
- Drop Point
- Helibase
- Helispot
- MediVac Site
- Road Block
- Other

MAP  
PAGE:  
7



SoCal Team 1  
August 11, 2012



123°17'W

123°16'W

123°15'W

123°14'W

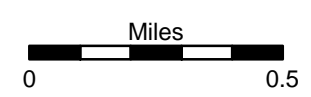
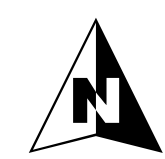
123°12'W



Fort Complex  
 CA-KNF-0005659  
 IAP  
 8/12/2012  
 DAY SHIFT  
 Datum: NAD 83

	Division
	Branch
	Uncontrolled Fire Edge
	Completed Contingency Line
	Proposed Contingency Line
	PACIFIC CREST TRAIL
	Other Trail
	Main Route Between Branches
	Closed Route
	Camp
	Drop Point
	Helibase
	Helispot
	MediVac Site
	Road Block
	Other

MAP  
 PAGE:  
 8



SoCal Team 1  
 August 11, 2012

