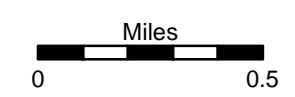
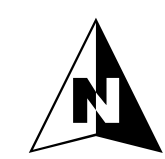
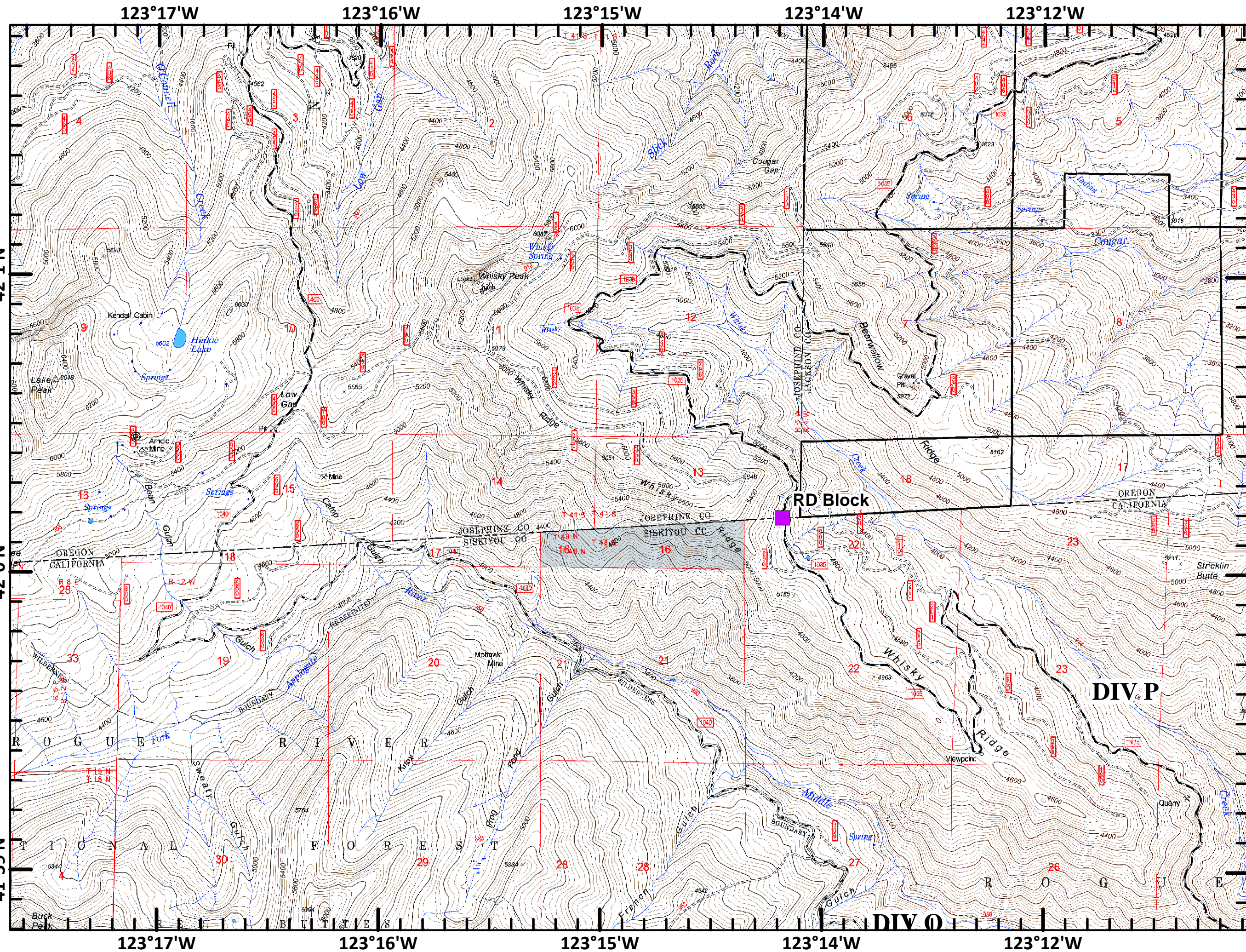


	Division
	Branch
	Completed Line
	Completed Contingency Line
	Proposed Contingency Line
	Uncontrolled Fire Edge
	PACIFIC CREST TRAIL
	Other Trail
	Main Route Between Branches
	Closed Route
	Water Source
	Camp
	Drop Point
	Helibase
	Helispot
	MediVac Site
	Road Block
	Other

MAP PAGE: 1



SoCal Team 1
 August 12, 2012



123°12'W

123°11'W

123°10'W

123°9'W

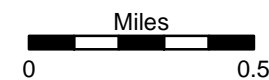
123°8'W

123°6'W

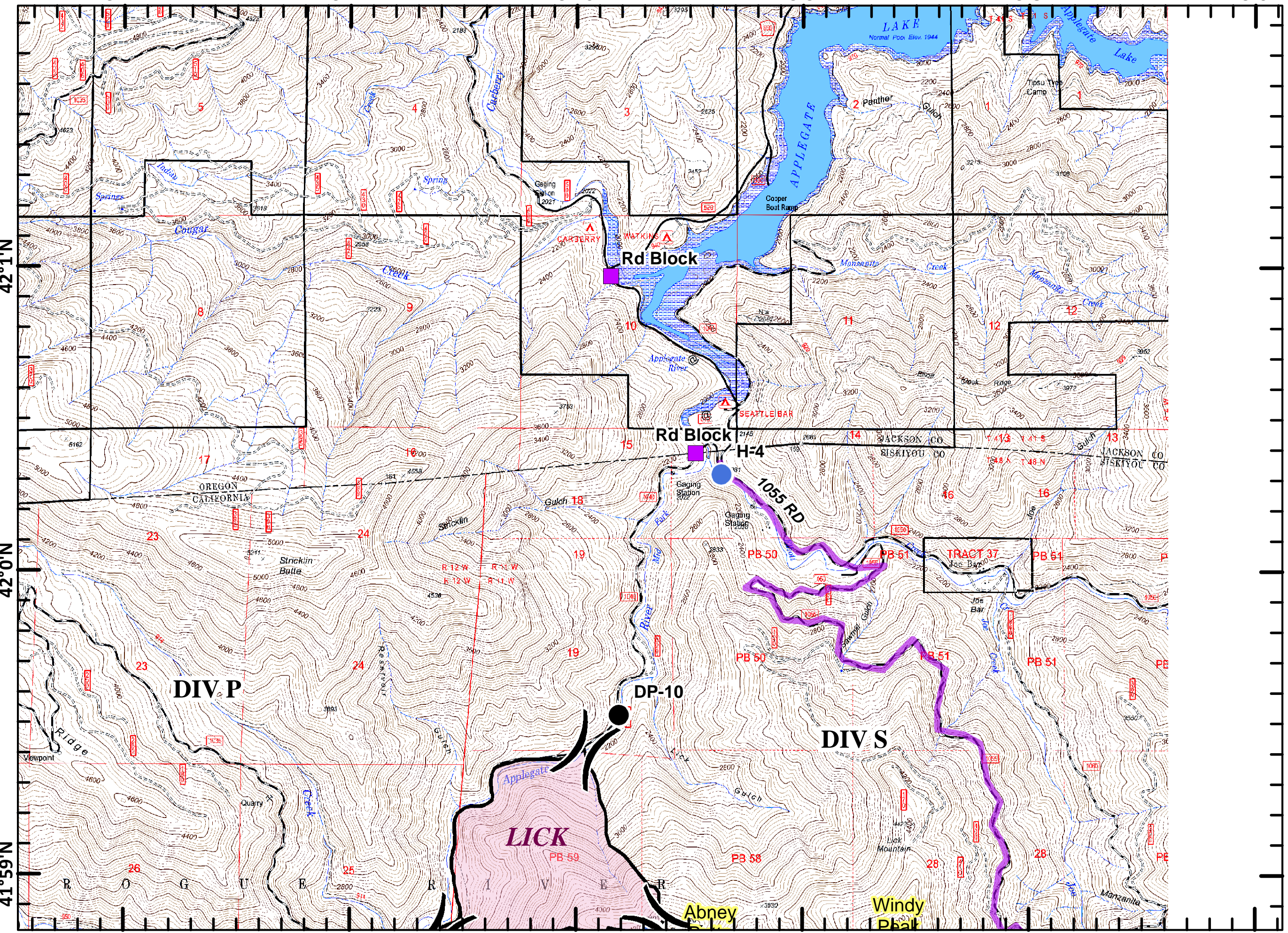
Fort Complex
 CA-KNF-0005659
 IAP
 8/13/2012
 DAY SHIFT
 Datum: NAD 83

- () Division
- [] Branch
- Completed Line
- - - Completed Contingency Line
- Proposed Contingency Line
- ▬ Uncontrolled Fire Edge
- ▬ PACIFIC CREST TRAIL
- ▬ Other Trail
- ▬ Main Route Between Branches
- ▬ Closed Route
- ⊙ Water Source
- ⊙ Camp
- Drop Point
- ⊙ Helibase
- Helispot
- ⊕ MediVac Site
- Road Block
- ⬢ Other

MAP PAGE: 2



SoCal Team 1
August 12, 2012



123°12'W

123°11'W

123°10'W

123°9'W

123°8'W

123°6'W

42°1'N

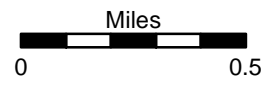
42°0'N

41°59'N

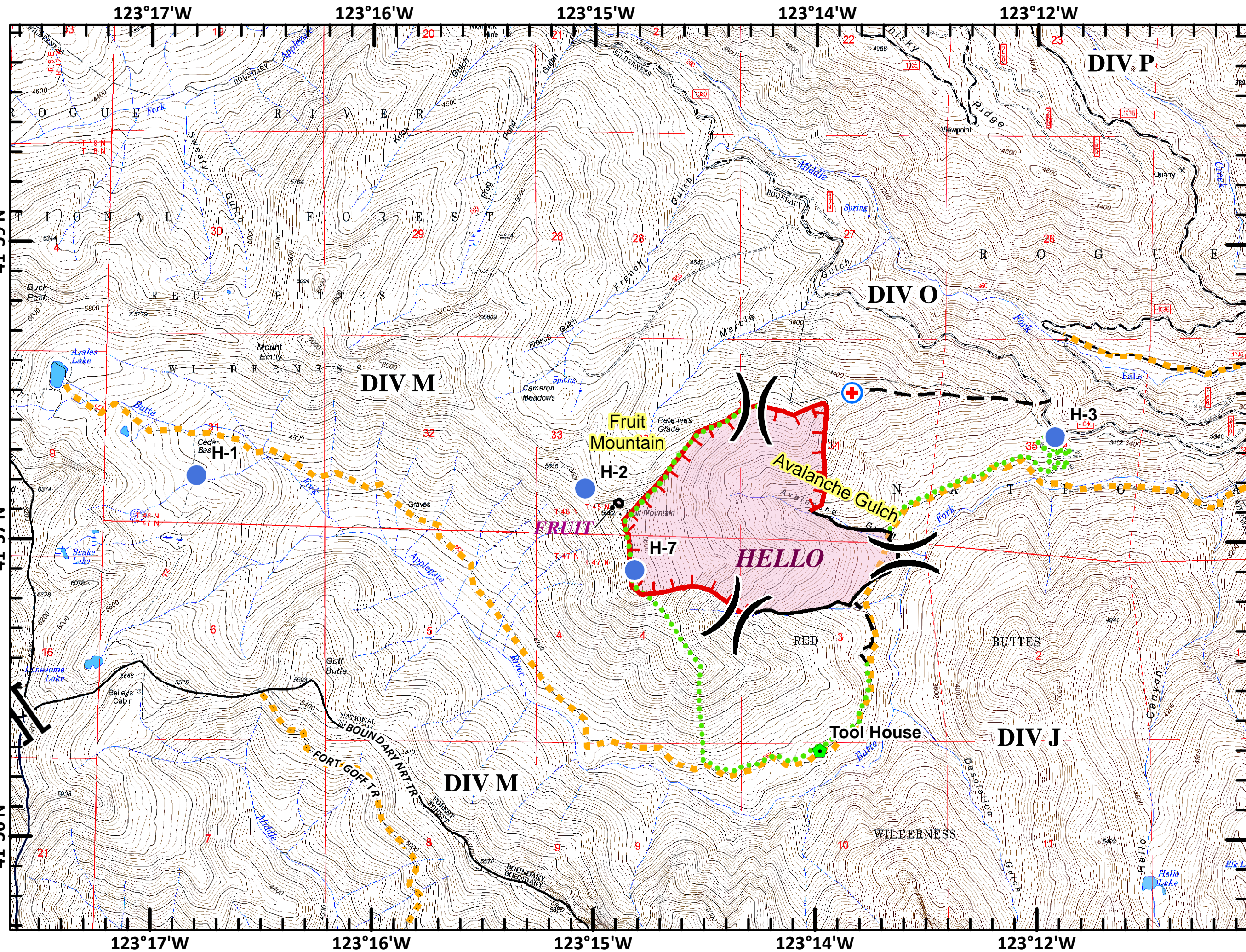
Fort Complex
 CA-KNF-0005659
 IAP
 8/13/2012
 DAY SHIFT
 Datum: NAD 83

<td>Division</td>	Division
<td>Branch</td>	Branch
	Completed Line
	Completed Contingency Line
	Proposed Contingency Line
	Uncontrolled Fire Edge
	PACIFIC CREST TRAIL
	Other Trail
	Main Route Between Branches
	Closed Route
	Water Source
	Camp
	Drop Point
	Helibase
	Helispot
	MediVac Site
	Road Block
	Other

MAP PAGE: 3

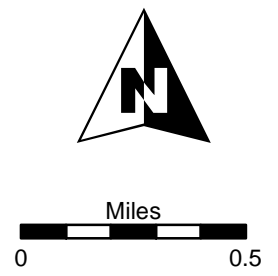


SoCal Team 1
 August 12, 2012

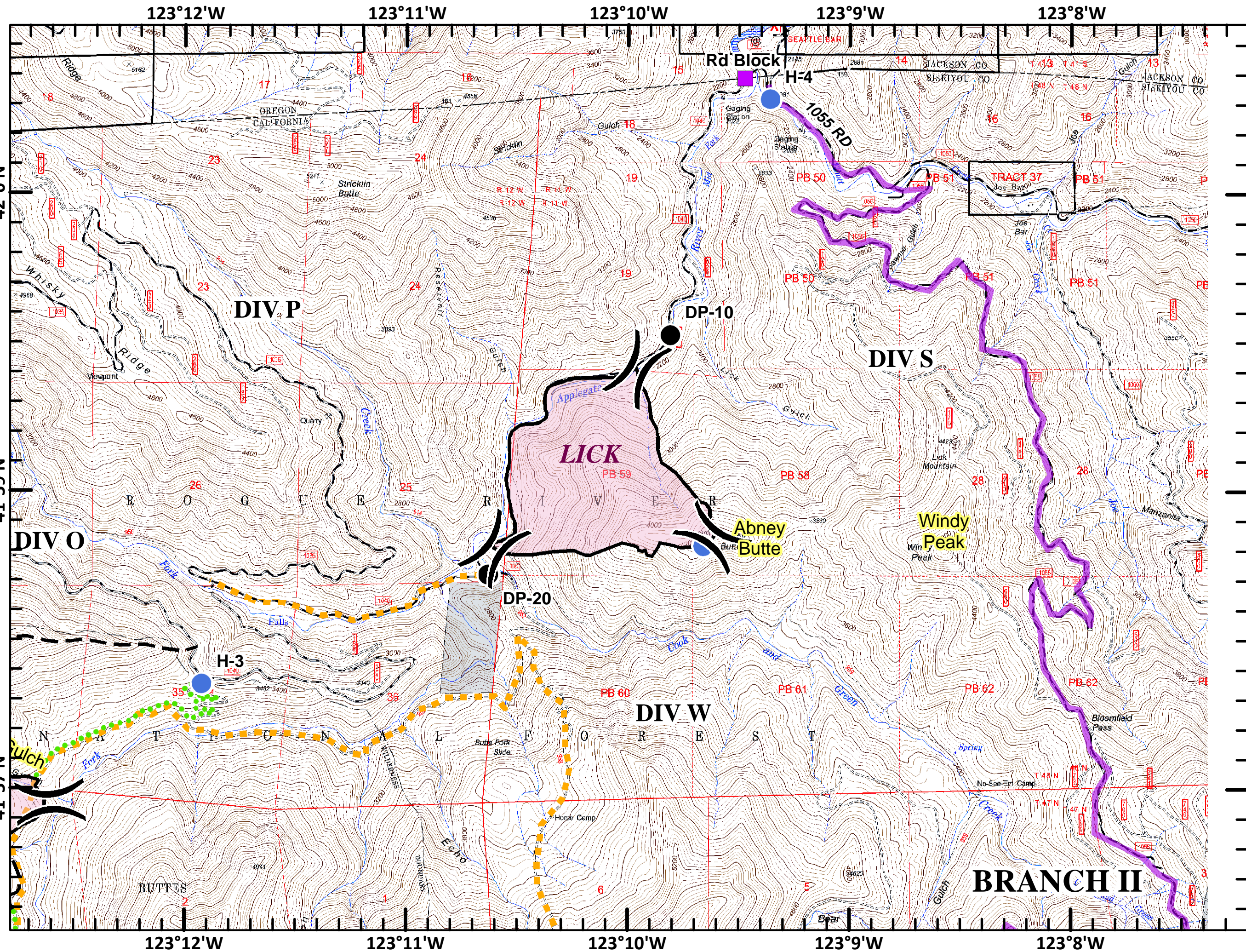


	Division
	Branch
	Completed Line
	Completed Contingency Line
	Proposed Contingency Line
	Uncontrolled Fire Edge
	PACIFIC CREST TRAIL
	Other Trail
	Main Route Between Branches
	Closed Route
	Water Source
	Camp
	Drop Point
	Helibase
	Helispot
	MediVac Site
	Road Block
	Other

MAP PAGE: 4



SoCal Team 1
 August 12, 2012



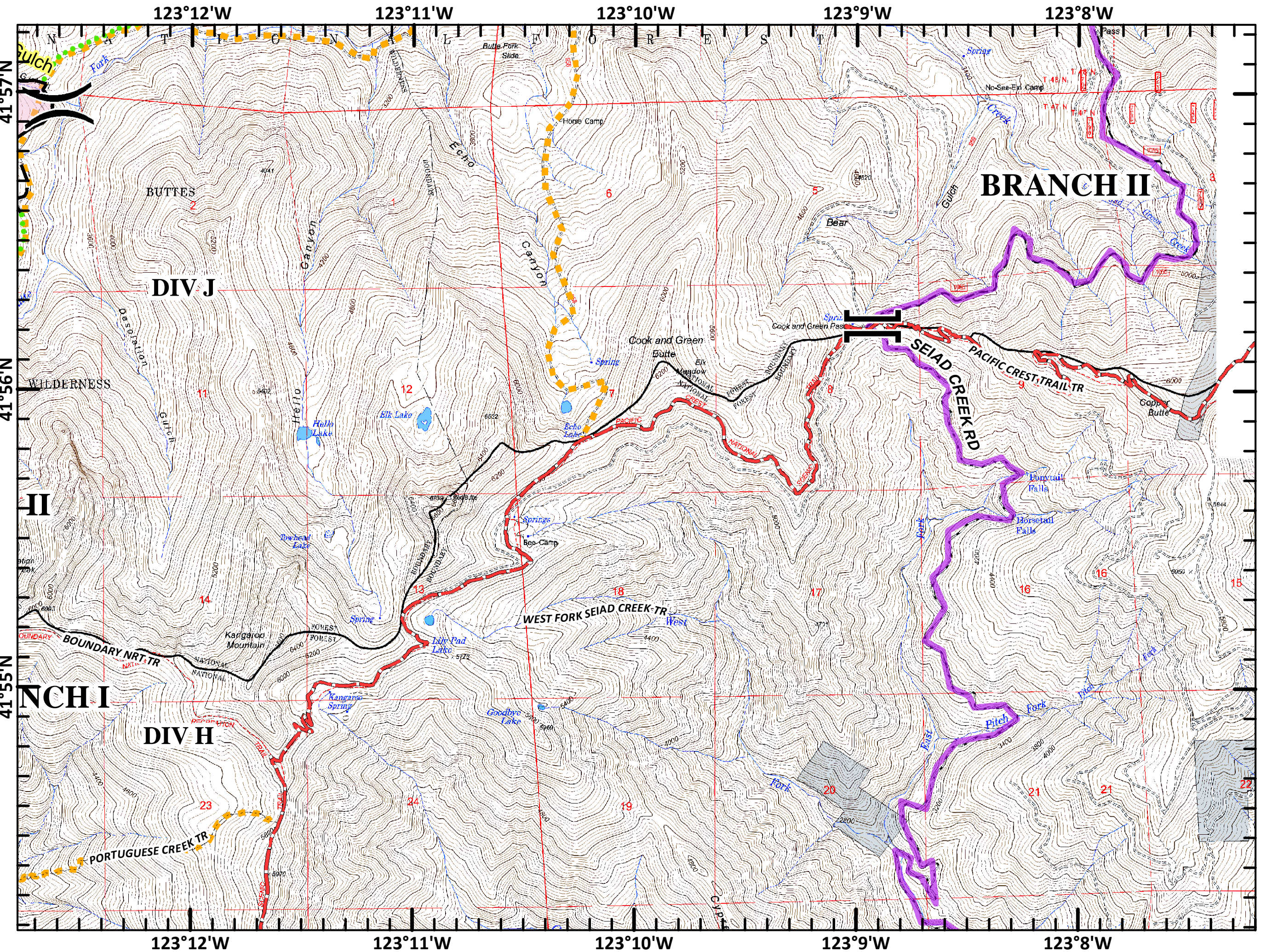
Fort Complex
 CA-KNF-0005659
 IAP
 8/13/2012
 DAY SHIFT
 Datum: NAD 83

	Division
	Branch
	Completed Line
	Completed Contingency Line
	Proposed Contingency Line
	Uncontrolled Fire Edge
	PACIFIC CREST TRAIL
	Other Trail
	Main Route Between Branches
	Closed Route
	Water Source
	Camp
	Drop Point
	Helibase
	Helispot
	MediVac Site
	Road Block
	Other

MAP PAGE: 6



SoCal Team 1
 August 12, 2012



123°17'W

123°16'W

123°15'W

123°14'W

123°12'W

Fort Complex
 CA-KNF-0005659
 IAP
 8/13/2012
 DAY SHIFT
 Datum: NAD 83

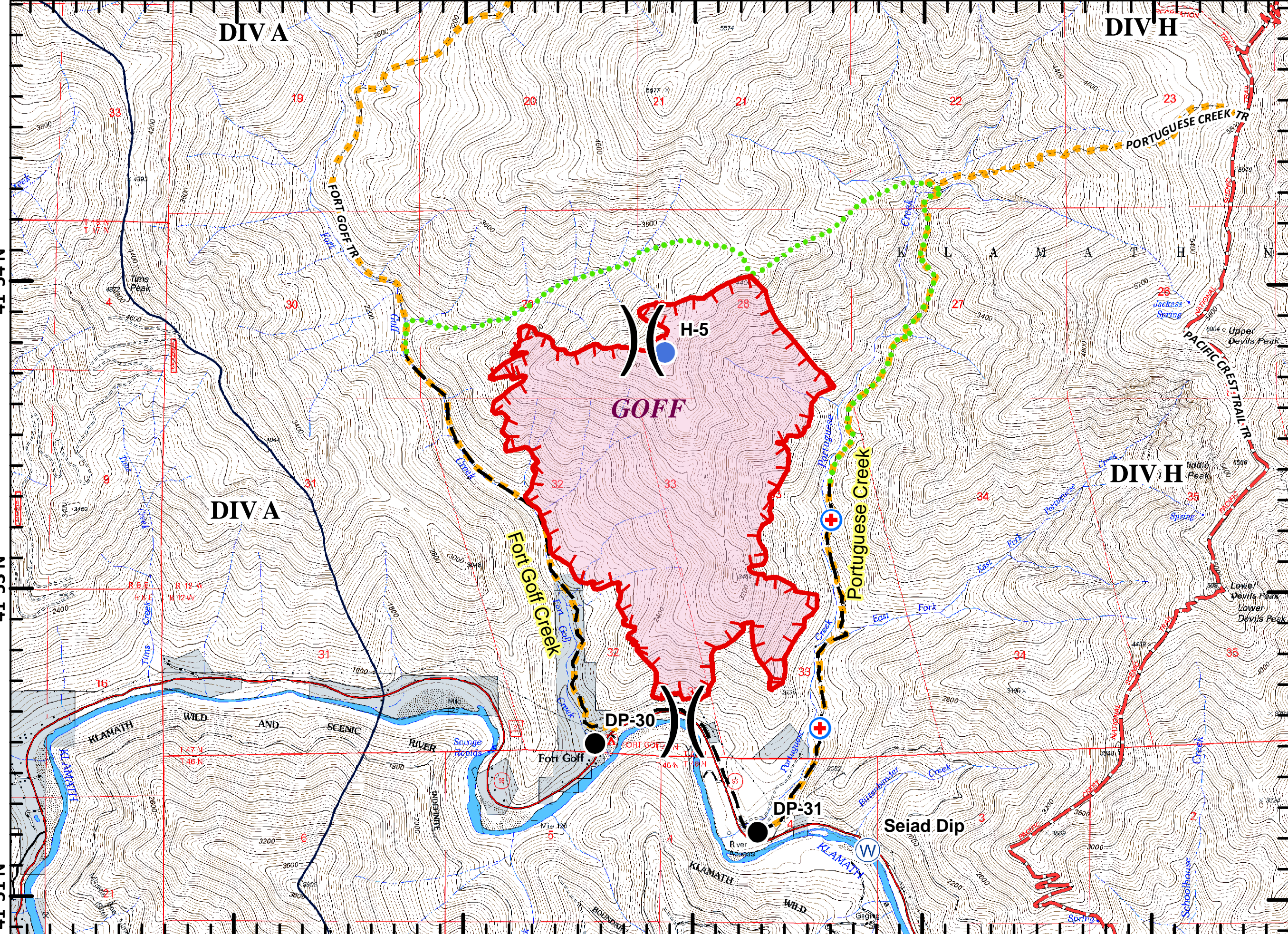
	Division
	Branch
	Completed Line
	Completed Contingency Line
	Proposed Contingency Line
	Uncontrolled Fire Edge
	PACIFIC CREST TRAIL
	Other Trail
	Main Route Between Branches
	Closed Route
	Water Source
	Camp
	Drop Point
	Helibase
	Helispot
	MediVac Site
	Road Block
	Other

MAP PAGE: 7

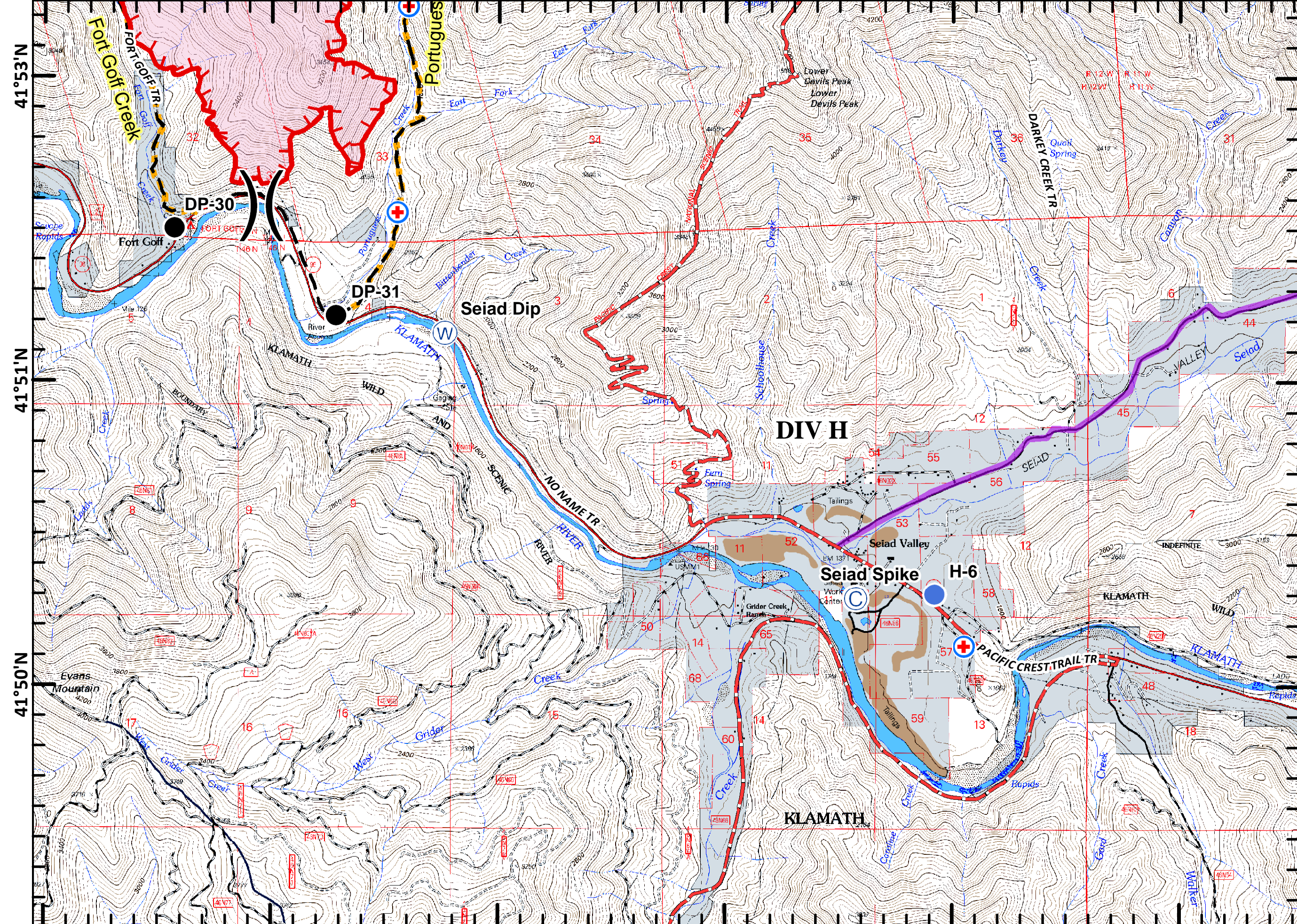
Miles
0 0.5



SoCal Team 1
 August 12, 2012



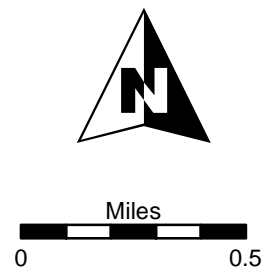
123°16'W 123°15'W 123°14'W 123°12'W 123°11'W 123°10'W



Fort Complex
CA-KNF-0005659
IAP
8/13/2012
DAY SHIFT
Datum: NAD 83

	Division
	Branch
	Completed Line
	Completed Contingency Line
	Proposed Contingency Line
	Uncontrolled Fire Edge
	PACIFIC CREST TRAIL
	Other Trail
	Main Route Between Branches
	Closed Route
	Water Source
	Camp
	Drop Point
	Helibase
	Helispot
	MediVac Site
	Road Block
	Other

MAP PAGE: 8



SoCal Team 1
August 12, 2012

123°16'W 123°15'W 123°14'W 123°12'W 123°11'W 123°10'W