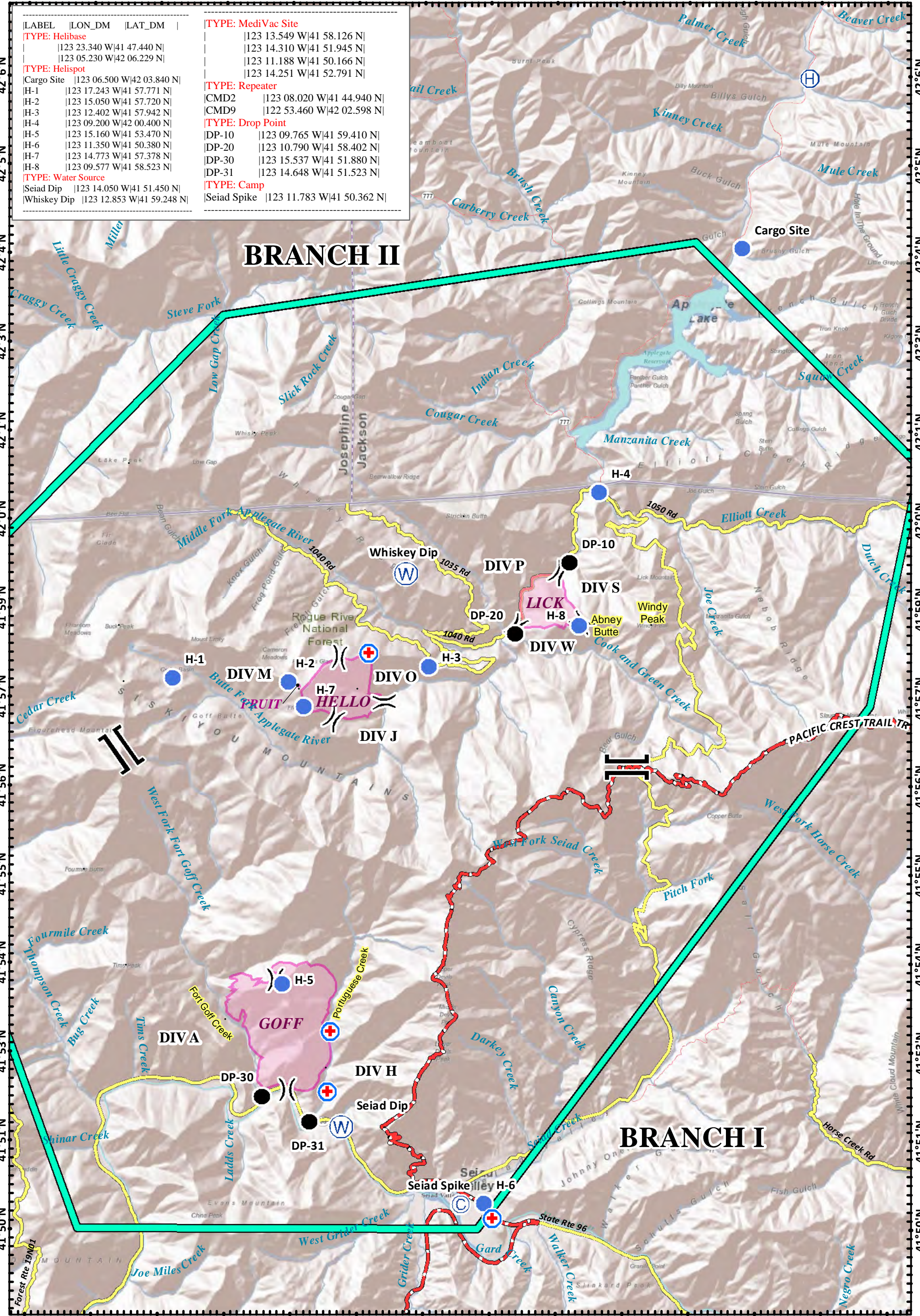


123°20'W 123°19'W 123°18'W 123°16'W 123°15'W 123°14'W 123°12'W 123°11'W 123°10'W 123°9'W 123°8'W 123°6'W 123°5'W 123°4'W

LABEL	LON_DM	LAT_DM	TYPE
[TYPE: Helibase	123 23.340 W 41 47.440 N	123 05.230 W 42 06.229 N	[TYPE: MediVac Site
[TYPE: Helispot	123 06.500 W 42 03.840 N	123 11.188 W 41 50.166 N	123 14.251 W 41 52.791 N
[TYPE: Repeater	123 17.243 W 41 57.771 N	123 08.020 W 41 44.940 N	122 53.460 W 42 02.598 N
[TYPE: Drop Point	123 15.050 W 41 57.720 N	123 09.200 W 42 00.400 N	123 09.765 W 41 59.410 N
[TYPE: Water Source	123 12.402 W 41 57.942 N	123 15.160 W 41 53.470 N	123 10.790 W 41 58.402 N
[TYPE: Camp	123 09.200 W 42 00.400 N	123 11.350 W 41 50.380 N	123 15.537 W 41 51.880 N
[TYPE: Drop Point	123 14.773 W 41 57.378 N	123 09.577 W 41 58.523 N	123 14.648 W 41 51.523 N
[TYPE: Water Source	123 14.050 W 41 51.450 N	123 11.783 W 41 50.362 N	
[TYPE: Camp	123 12.853 W 41 59.248 N		

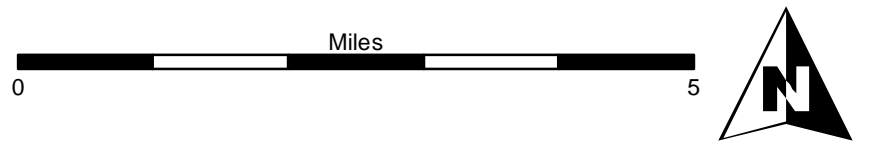
BRANCH II

BRANCH I



Fort Complex
CA-KNF-0005659
AirOps
8/14/2012
DAY SHIFT
Datum: NAD 83

	Branch		Water Source		Helibase
	Fire Perimeter		Camp		Helispot
	TFR Boundary		Drop Point		MediVac Site
	Road				
	PACIFIC CREST TRAIL				



SoCal Team 1
 August 13, 2012