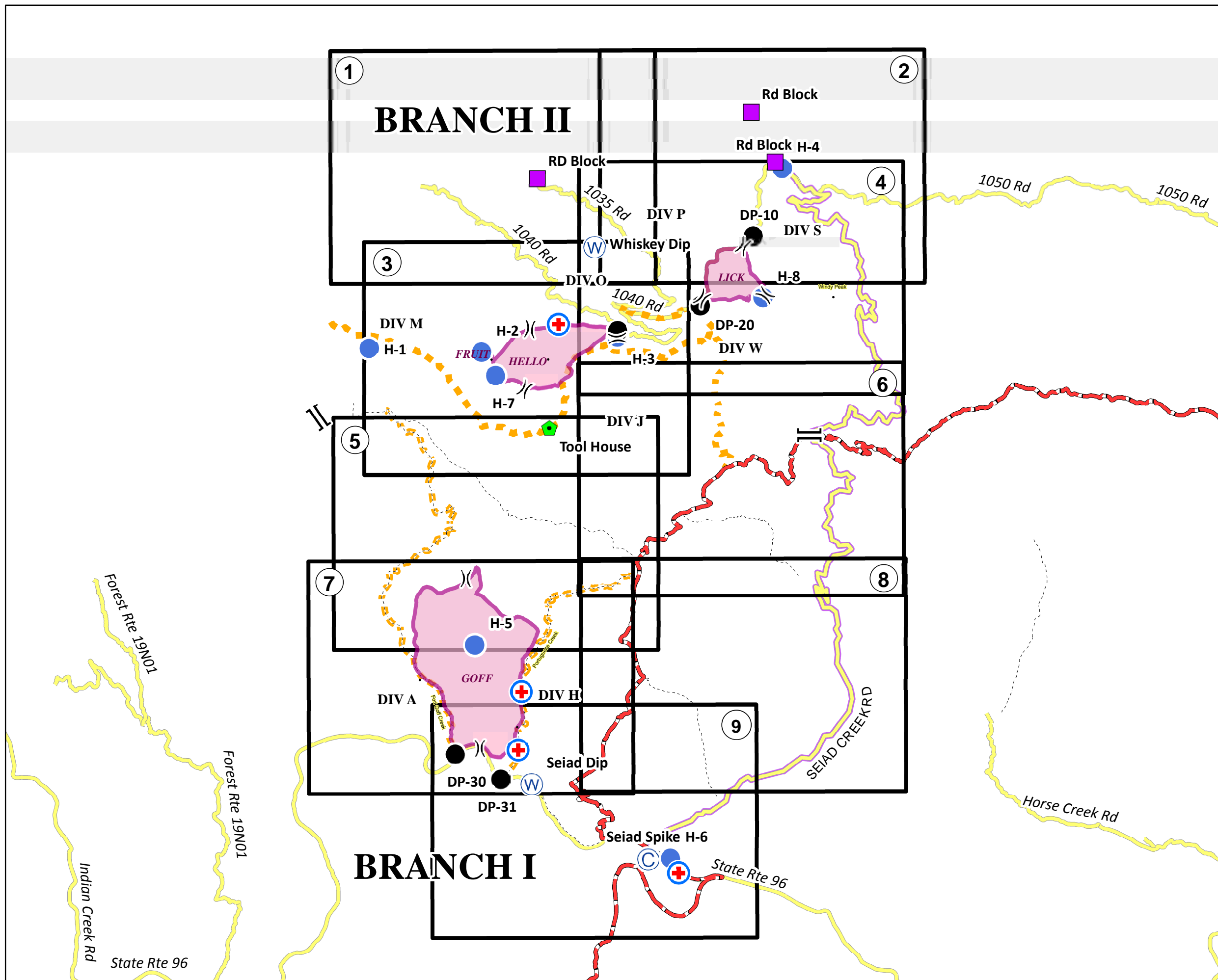


Fort Complex
 CA-KNF-0005659
 IAP
 8/16/2012
 DAY SHIFT
 Datum: NAD 83



Legend

- Division
- Branch
- PACIFIC CREST TRAIL
- Other Trail
- Main Route Between Branches
- Closed Route
- Water Source
- Camp
- Drop Point
- Helibase
- Helispot
- MediVac Site
- Miscellaneous
- Other

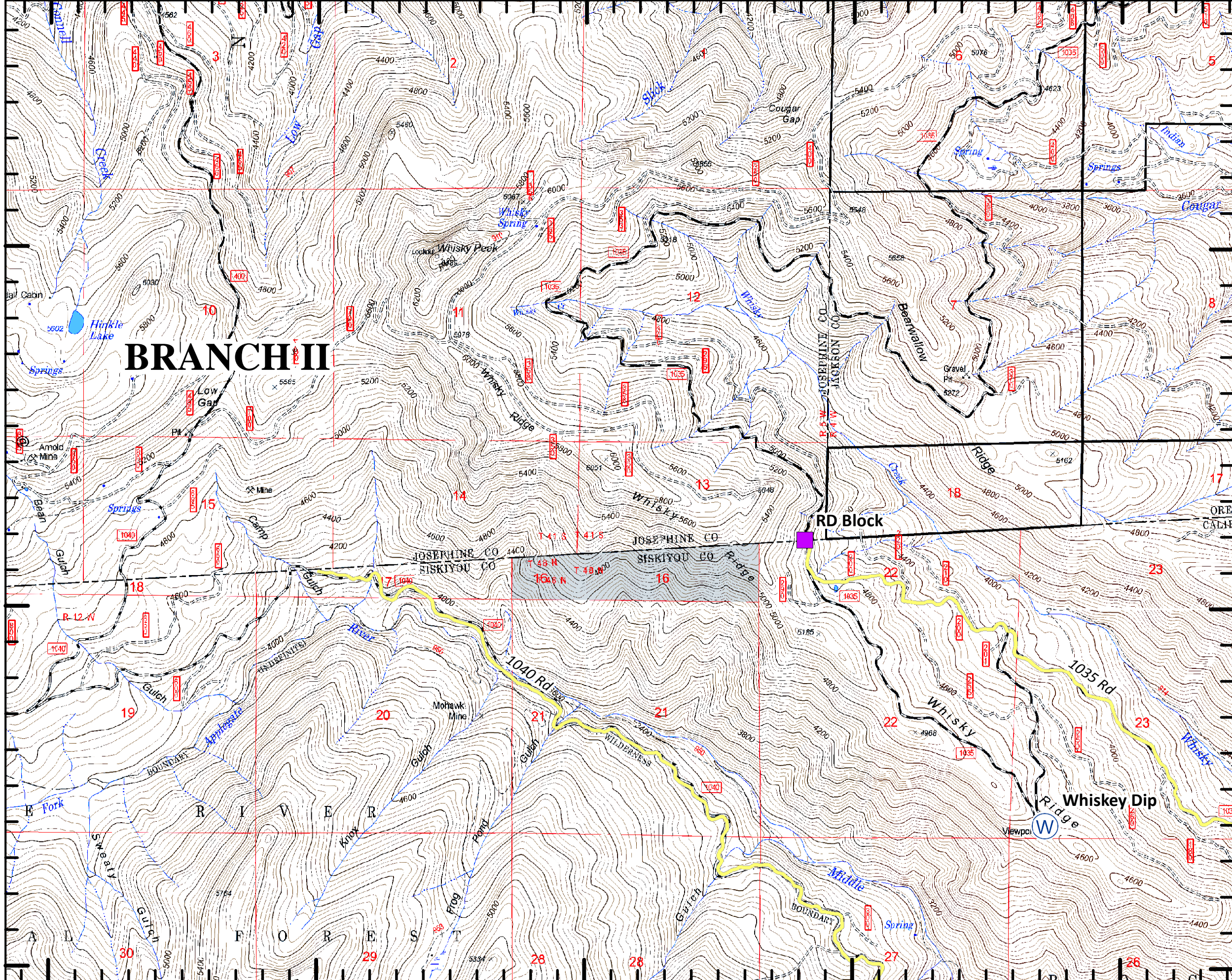
MAP INDEX



SoCal Team 1
 August 15 2012

123°17'W 123°16'W 123°15'W 123°14'W 123°12'W

Fort Complex
CA-KNF-0005659
IAP
8/16/2012
DAY SHIFT
Datum: NAD 83



- Division
- Branch
- Completed Line
- Completed Contingency Line
- Proposed Contingency Line
- Uncontrolled Fire Edge
- PACIFIC CREST TRAIL
- Other Trail
- Main Route Between Branches
- Closed Route
- Water Source
- Camp
- Drop Point
- Helibase
- Helispot
- MediVac Site
- Road Block
- Other



Map Page: 1



SoCal Team 1
August 15, 2012

123°17'W 123°16'W 123°15'W 123°14'W 123°12'W

42°11'N

42°11'N

42°0'N

42°0'N

41°59'N

41°59'N

123°11'W

123°10'W

123°9'W

123°8'W

Fort Complex
CA-KNF-0005659
IAP
8/16/2012
DAY SHIFT
Datum: NAD 83

42°11'N

42°11'N

42°0'N

42°0'N

41°59'N

41°59'N

BRANCH II

DIV P

DIV S

LICK

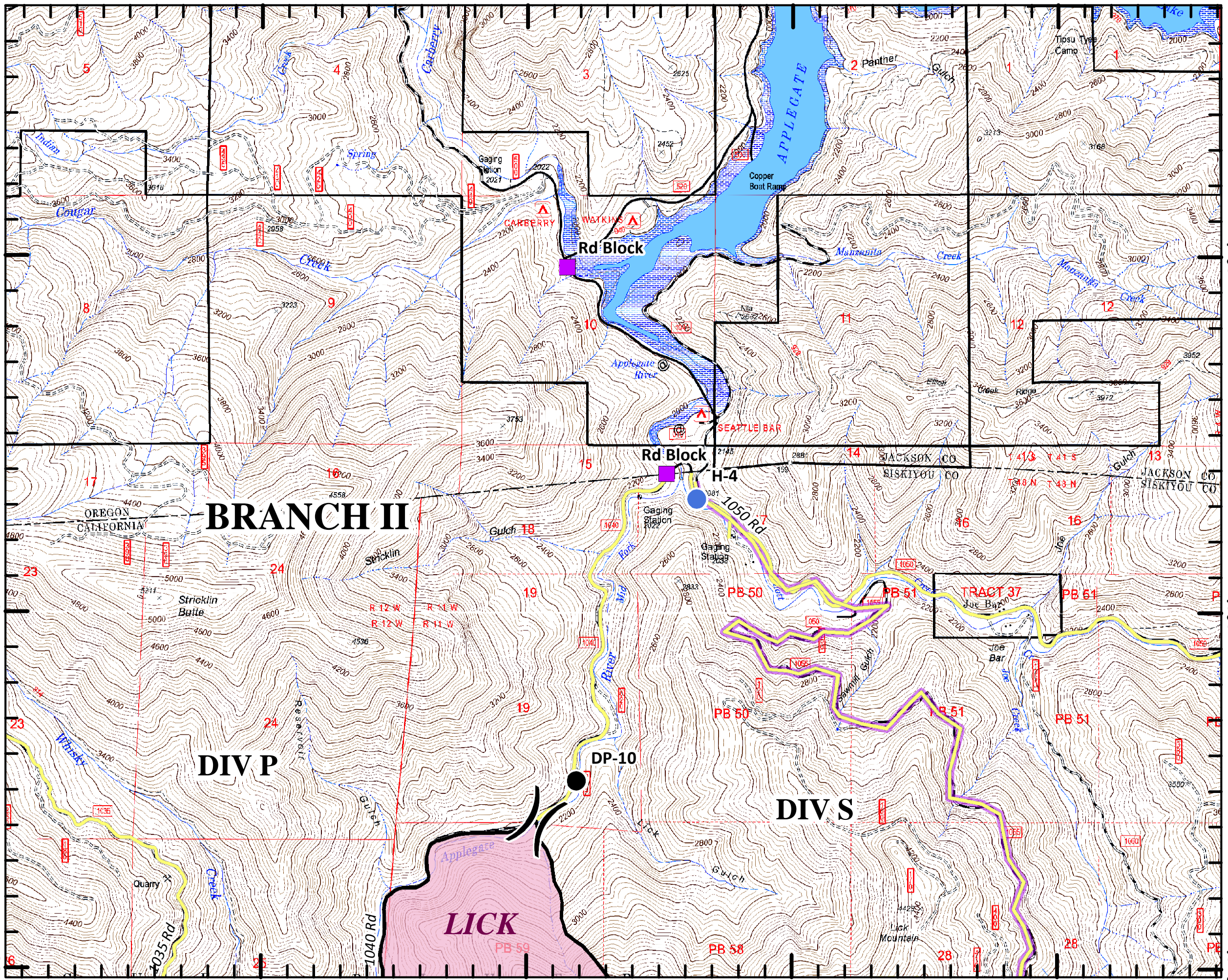
	Division
	Branch
	Completed Line
	Completed Contingency Line
	Proposed Contingency Line
	Uncontrolled Fire Edge
	PACIFIC CREST TRAIL
	Other Trail
	Main Route Between Branches
	Closed Route
	Water Source
	Camp
	Drop Point
	Helibase
	Helispot
	MediVac Site
	Road Block
	Other



Map Page: 2

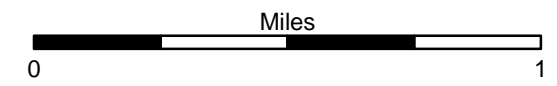


SoCal Team 1
 August 15, 2012



Fort Complex
 CA-KNF-0005659
 IAP
 8/16/2012
 DAY SHIFT
 Datum: NAD 83

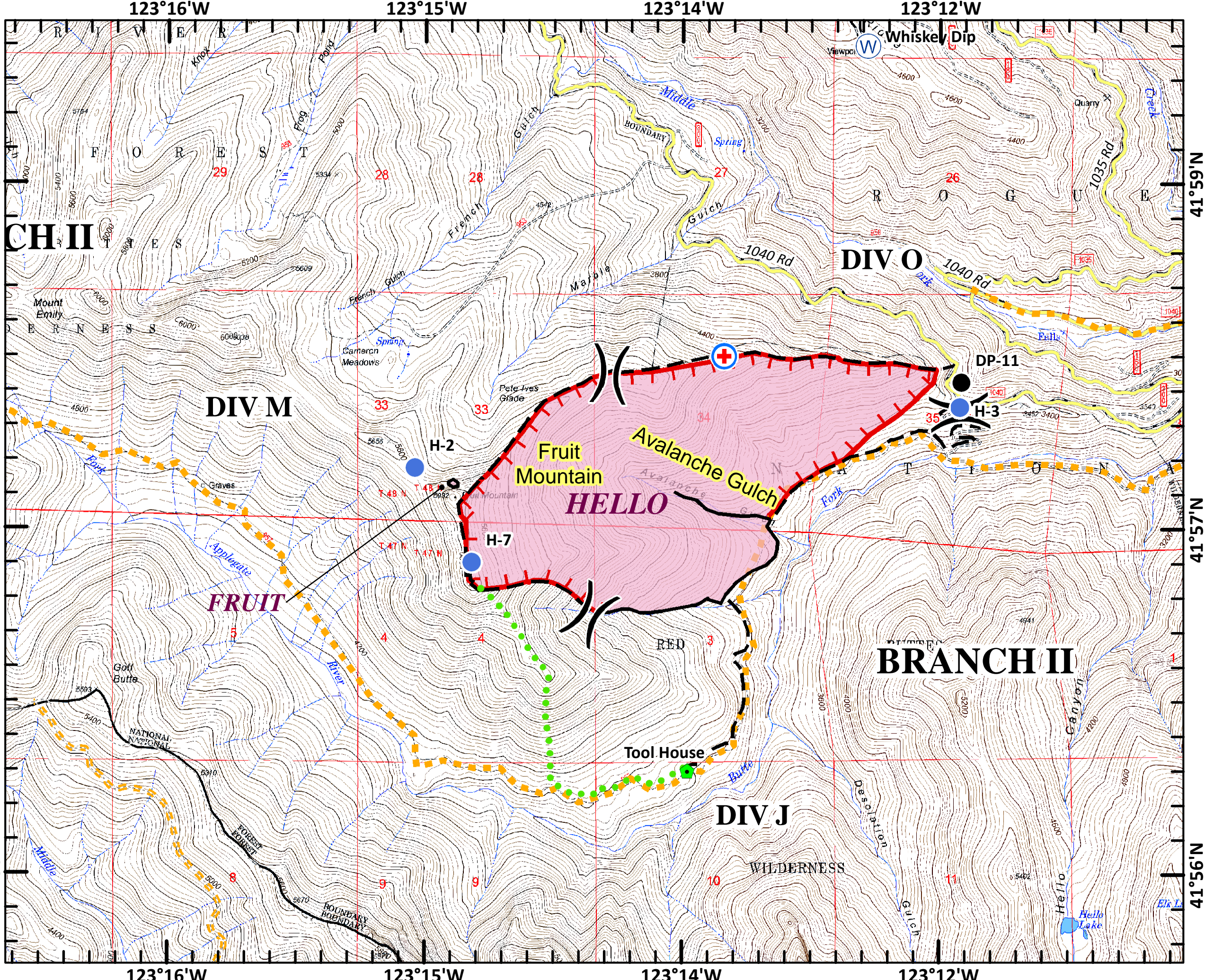
	Division
	Branch
	Completed Line
	Completed Contingency Line
	Proposed Contingency Line
	Uncontrolled Fire Edge
	PACIFIC CREST TRAIL
	Other Trail
	Main Route Between Branches
	Closed Route
	Water Source
	Camp
	Drop Point
	Helibase
	Helispot
	MediVac Site
	Road Block
	Other

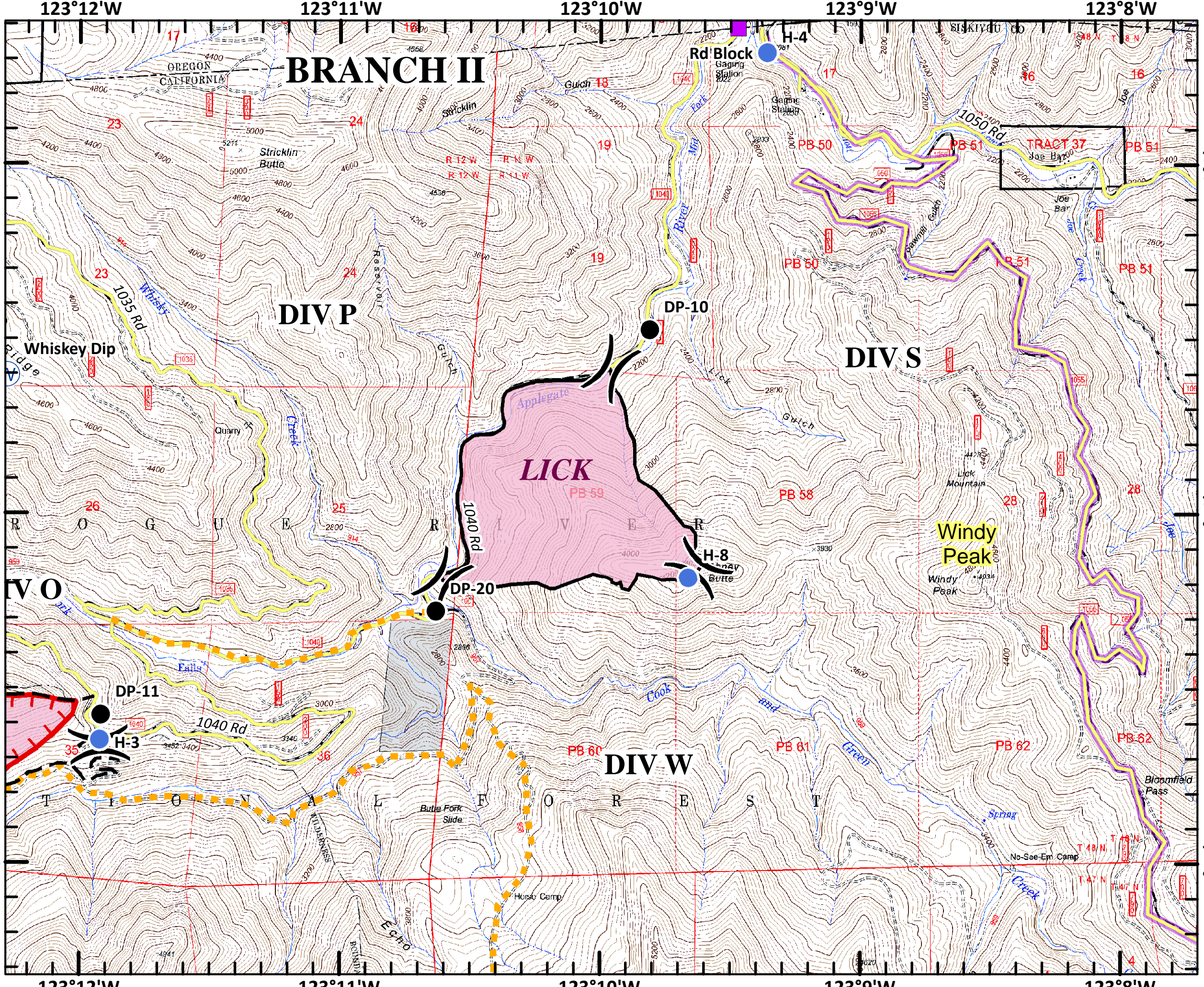


Map Page: 3



SoCal Team 1
 August 15, 2012





Fort Complex
CA-KNF-0005659
IAP
8/16/2012
DAY SHIFT
Datum: NAD 83

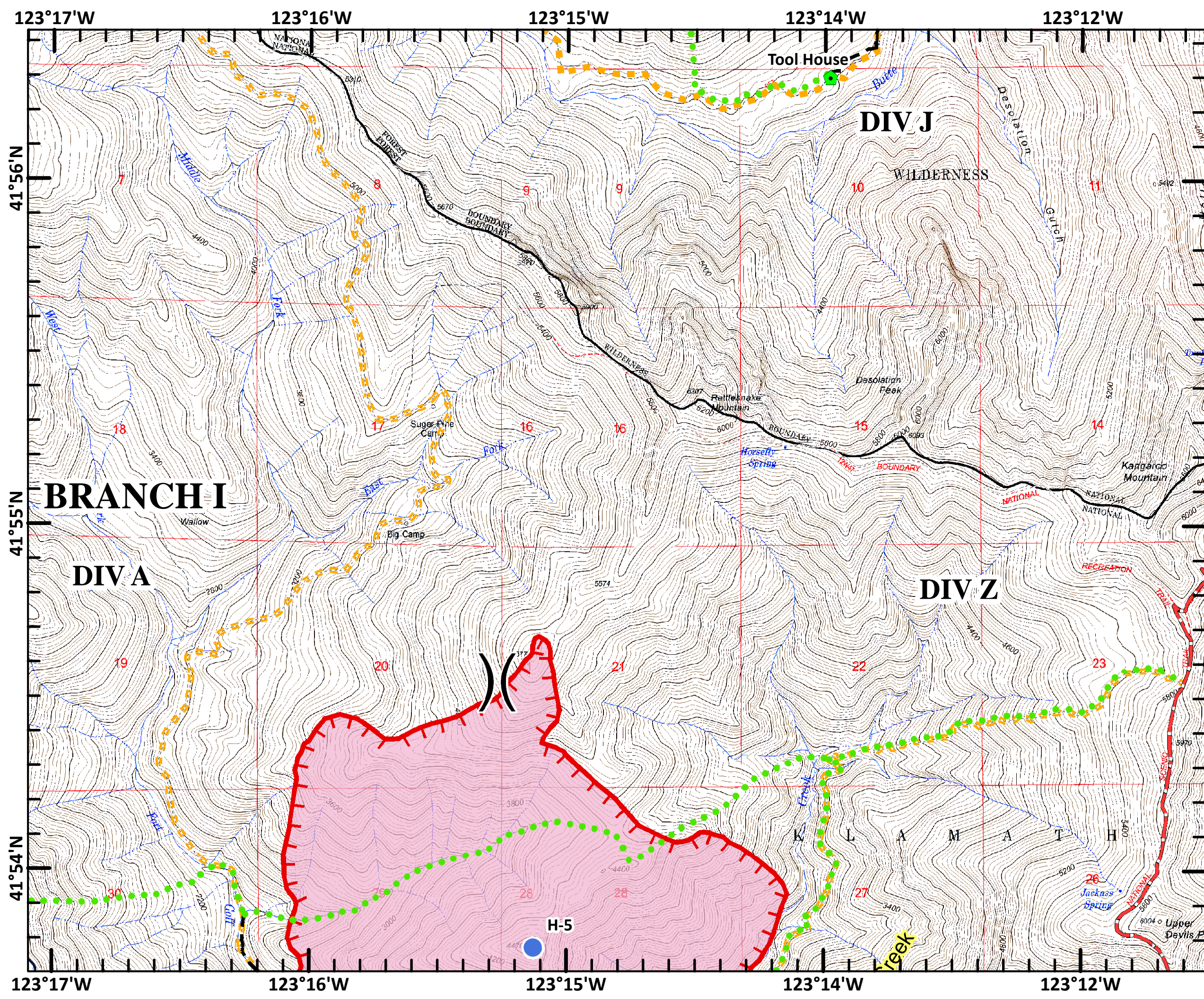
	Division
	Branch
	Completed Line
	Completed Contingency Line
	Proposed Contingency Line
	Uncontrolled Fire Edge
	PACIFIC CREST TRAIL
	Other Trail
	Main Route Between Branches
	Closed Route
	Water Source
	Camp
	Drop Point
	Helibase
	Helispot
	MediVac Site
	Road Block
	Other



Map Page: 4



SoCal Team 1
August 15, 2012



Fort Complex
CA-KNF-0005659
IAP
8/16/2012
DAY SHIFT
Datum: NAD 83

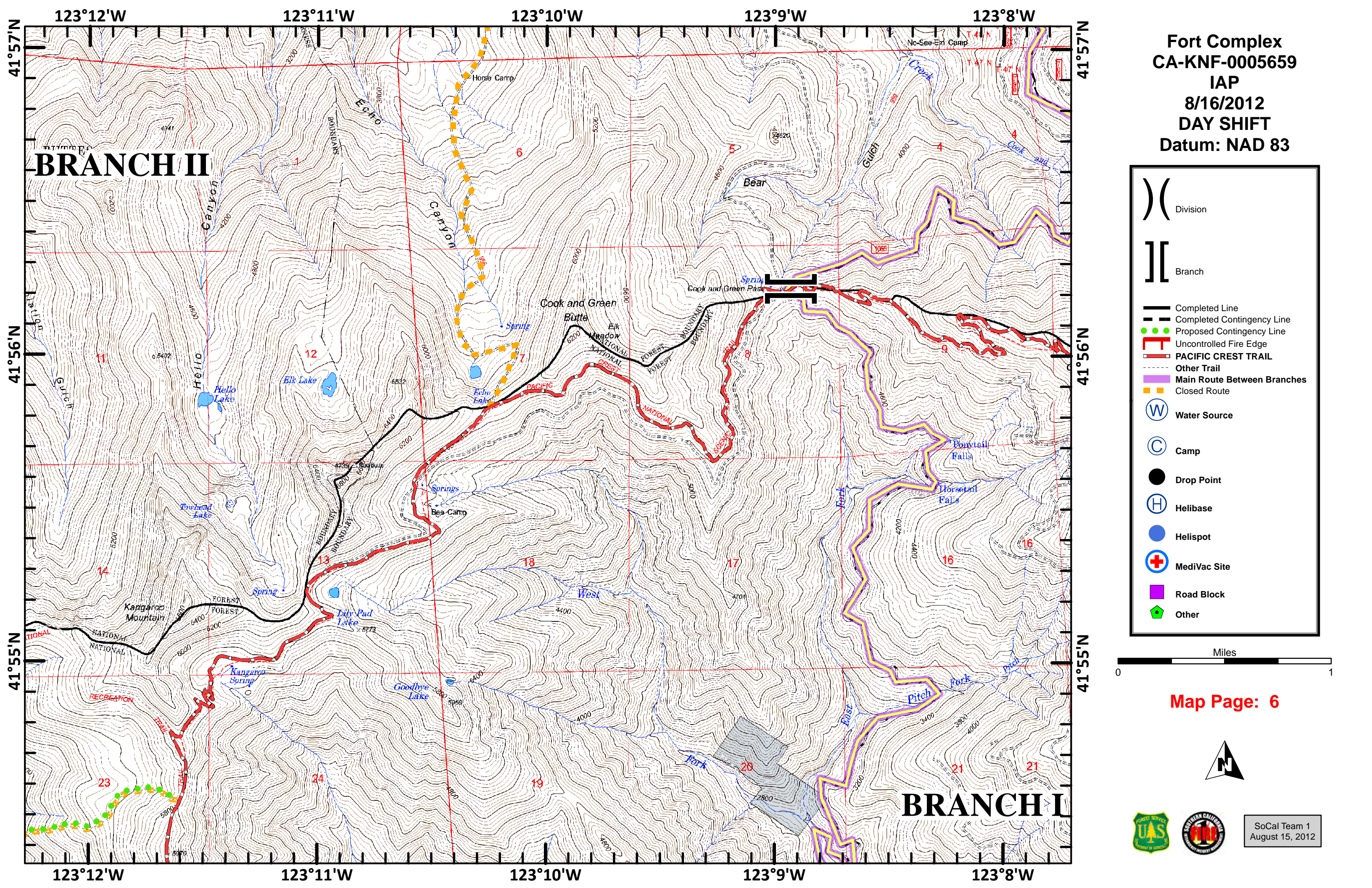
	Division
	Branch
	Completed Line
	Completed Contingency Line
	Proposed Contingency Line
	Uncontrolled Fire Edge
	PACIFIC CREST TRAIL
	Other Trail
	Main Route Between Branches
	Closed Route
	Water Source
	Camp
	Drop Point
	Helibase
	Helispot
	MediVac Site
	Road Block
	Other



Map Page: 5



SoCal Team 1
 August 15, 2012



Fort Complex
 CA-KNF-0005659
 IAP
 8/16/2012
 DAY SHIFT
 Datum: NAD 83

- Division
- Branch
- Completed Line
- Completed Contingency Line
- Proposed Contingency Line
- Uncontrolled Fire Edge
- PACIFIC CREST TRAIL
- Other Trail
- Main Route Between Branches
- Closed Route
- Water Source
- Camp
- Drop Point
- Helibase
- Helispot
- MediVac Site
- Road Block
- Other



Map Page: 6



SoCal Team 1
 August 15, 2012

123°17'W

123°16'W

123°15'W

123°14'W

123°12'W

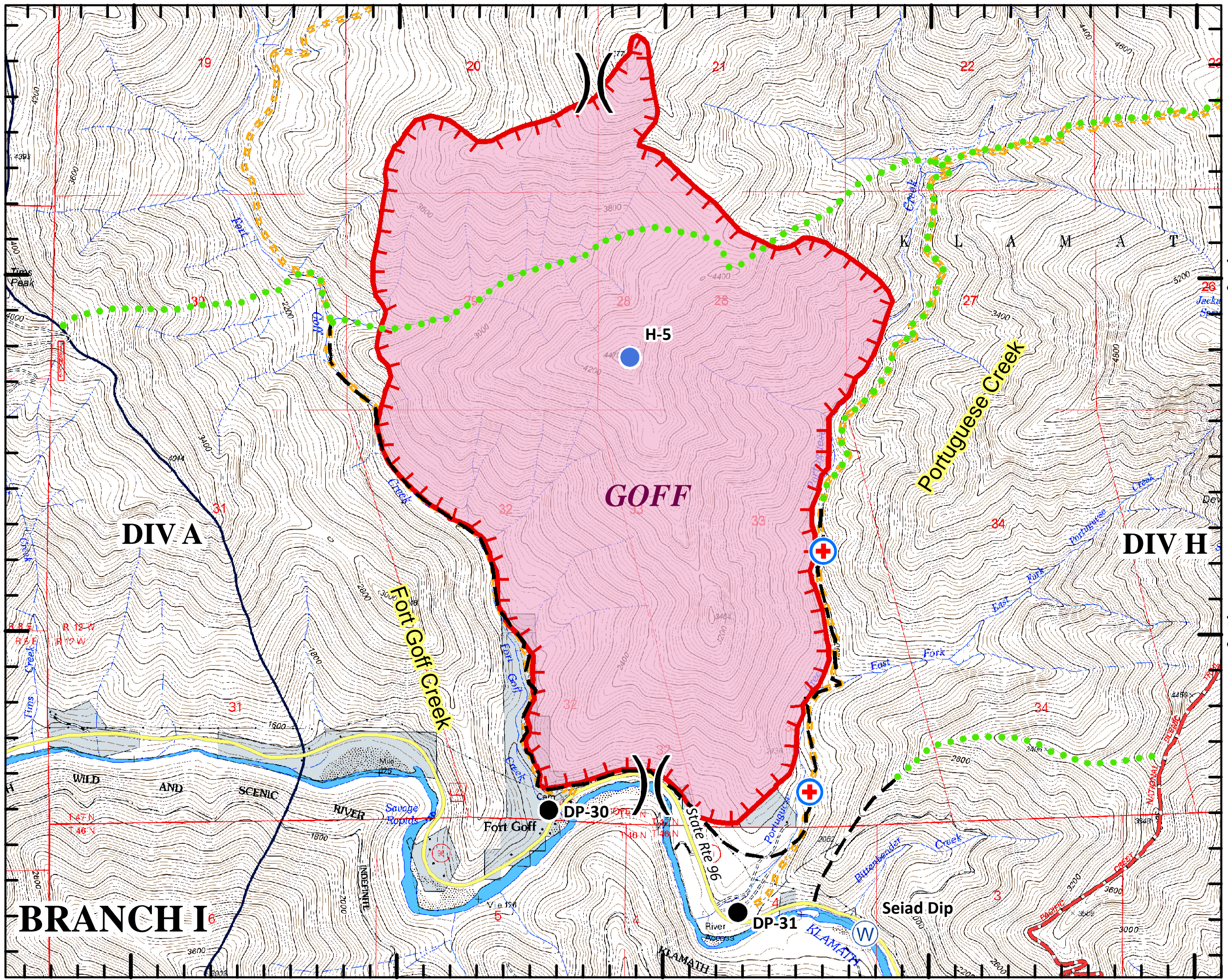
Fort Complex
CA-KNF-0005659
IAP
8/16/2012
DAY SHIFT
Datum: NAD 83

41°54'N

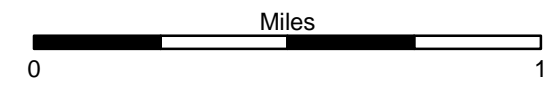
41°54'N

41°53'N

41°53'N



	Division
	Branch
	Completed Line
	Completed Contingency Line
	Proposed Contingency Line
	Uncontrolled Fire Edge
	PACIFIC CREST TRAIL
	Other Trail
	Main Route Between Branches
	Closed Route
	Water Source
	Camp
	Drop Point
	Helibase
	Helispot
	MediVac Site
	Road Block
	Other



Map Page: 7



SoCal Team 1
 August 15, 2012

BRANCH I

DIV A

DIV H

GOFF

Portuguese Creek

Fort Goff Creek

Fort Goff

Seiad Dip

State Rte 99

Wild and Scenic River

Klamath River

Water Source

Drop Point DP-30

Drop Point DP-31

H-5

19

20

21

22

30

25

28

28

27

31

32

33

34

31

32

34

33

123°17'W

123°16'W

123°15'W

123°14'W

123°12'W

41°54'N

41°54'N

41°53'N

41°53'N

123°12'W

123°11'W

123°10'W

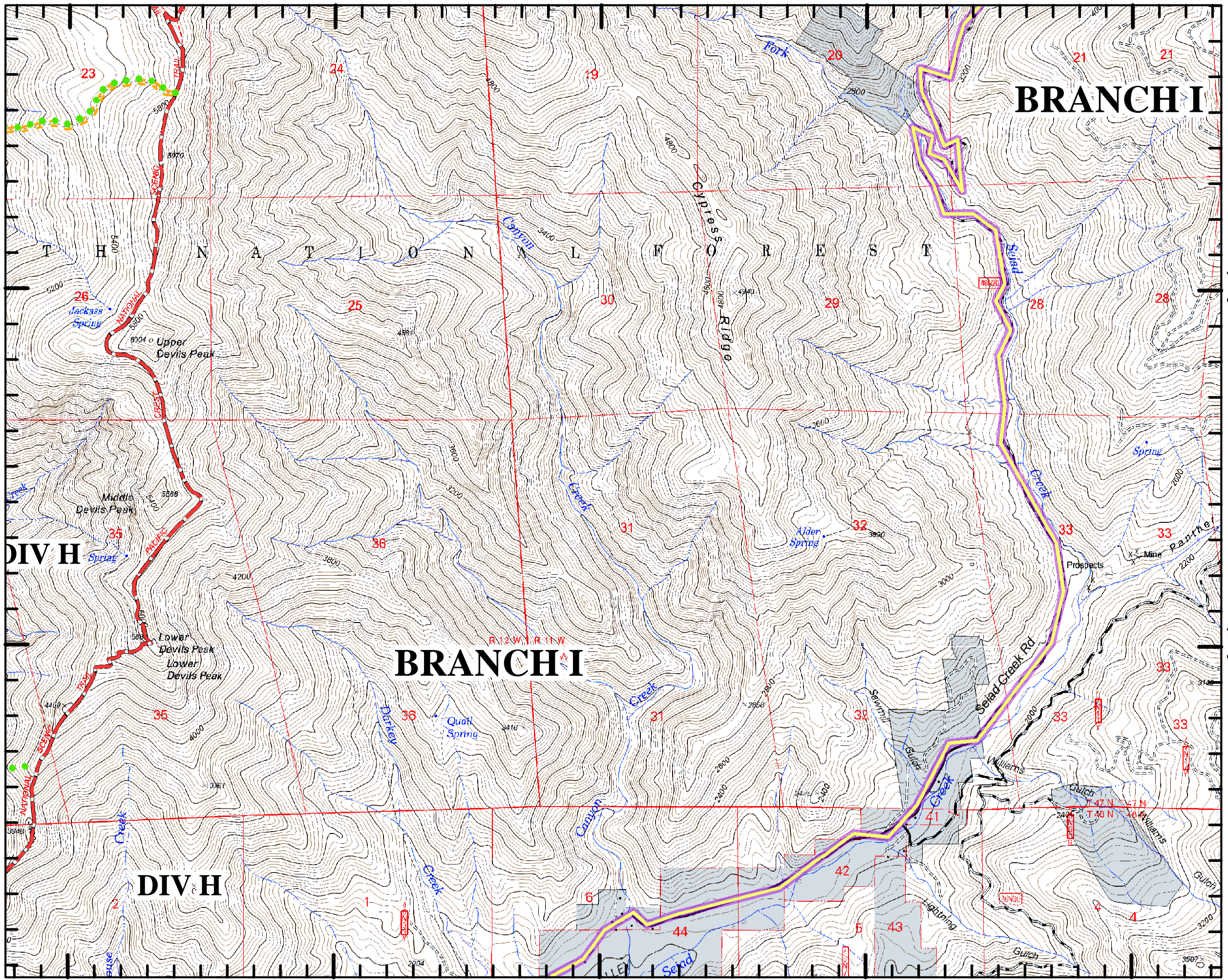
123°9'W

123°8'W

Fort Complex
 CA-KNF-0005659
 IAP
 8/16/2012
 DAY SHIFT
 Datum: NAD 83

BRANCH I

BRANCH I



	Division
	Branch
	Completed Line
	Completed Contingency Line
	Proposed Contingency Line
	Uncontrolled Fire Edge
	PACIFIC CREST TRAIL
	Other Trail
	Main Route Between Branches
	Closed Route
	Water Source
	Camp
	Drop Point
	Helibase
	Helispot
	MediVac Site
	Road Block
	Other



Map Page: 8



SoCal Team 1
 August 15, 2012

123°12'W

123°11'W

123°10'W

123°9'W

123°8'W

41°54'N

41°54'N

41°53'N

41°53'N

Fort Complex
 CA-KNF-0005659
 IAP
 8/16/2012
 DAY SHIFT
 Datum: NAD 83

	Division
	Branch
	Completed Line
	Completed Contingency Line
	Proposed Contingency Line
	Uncontrolled Fire Edge
	PACIFIC CREST TRAIL
	Other Trail
	Main Route Between Branches
	Closed Route
	Water Source
	Camp
	Drop Point
	Helibase
	Helispot
	MediVac Site
	Road Block
	Other



Map Page: 9



SoCal Team 1
 August 15, 2012

