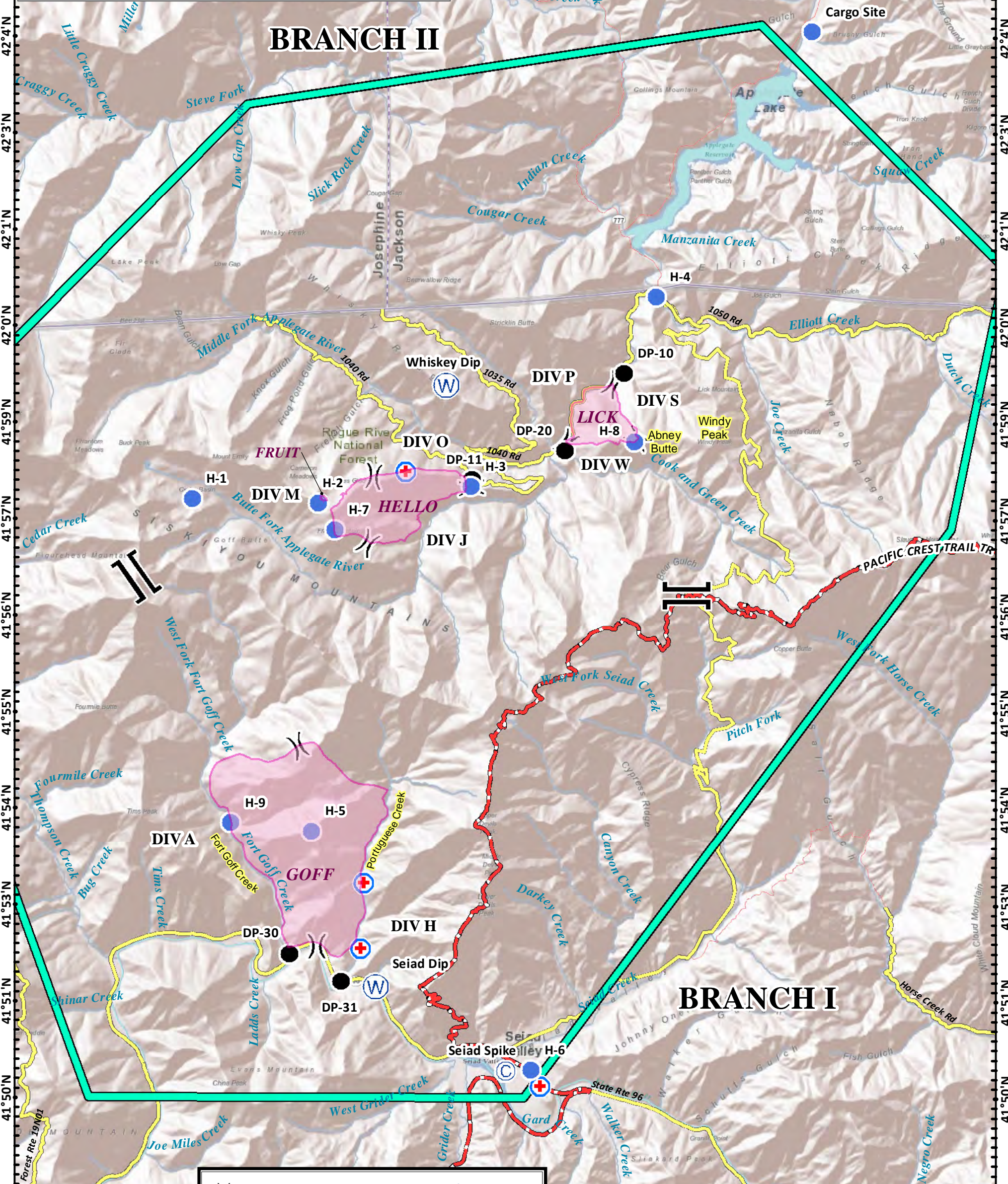


[TYPE: Helibase 123 23.340 W 41 47.440 N 123 05.230 W 42 06.229 N	[TYPE: MediVac Site 123 13.549 W 41 58.126 N 123 14.310 W 41 51.945 N 123 11.188 W 41 50.166 N 123 14.251 W 41 52.791 N
[TYPE: Helispot Cargo Site 123 06.500 W 42 03.840 N H-1 123 17.243 W 41 57.771 N H-2 123 15.050 W 41 57.720 N H-3 123 12.402 W 41 57.942 N H-4 123 09.200 W 42 00.400 N H-5 123 15.160 W 41 53.470 N H-6 123 11.350 W 41 50.380 N H-7 123 14.773 W 41 57.378 N H-8 123 09.577 W 41 58.523 N H-9 123 16.556 W 41 53.578 N	[TYPE: Repeater CMD2 123 08.020 W 41 44.940 N CMD9 122 53.460 W 42 02.598 N
[TYPE: Water Source Seiad Dip 123 14.050 W 41 51.450 N Whiskey Dip 123 12.853 W 41 59.248 N	[TYPE: Drop Point DP-10 123 09.765 W 41 59.410 N DP-11 123 12.397 W 41 58.032 N DP-20 123 10.790 W 41 58.402 N DP-30 123 15.537 W 41 51.880 N DP-31 123 14.648 W 41 51.523 N
	[TYPE: Camp Seiad Spike 123 11.783 W 41 50.362 N

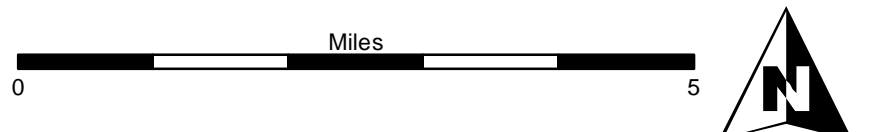
BRANCH II

BRANCH I



Fort Complex
CA-KNF-0005659
AirOps
8/18/2012
DAY SHIFT
Datum: NAD 83

	Division		Water Source		Helibase
	Branch		Camp		Helispot
	Fire Perimeter		Drop Point		MediVac Site
	TFR Boundary				
	Road				
	PACIFIC CREST TRAIL				



SoCal Team 1
 August 17, 2012