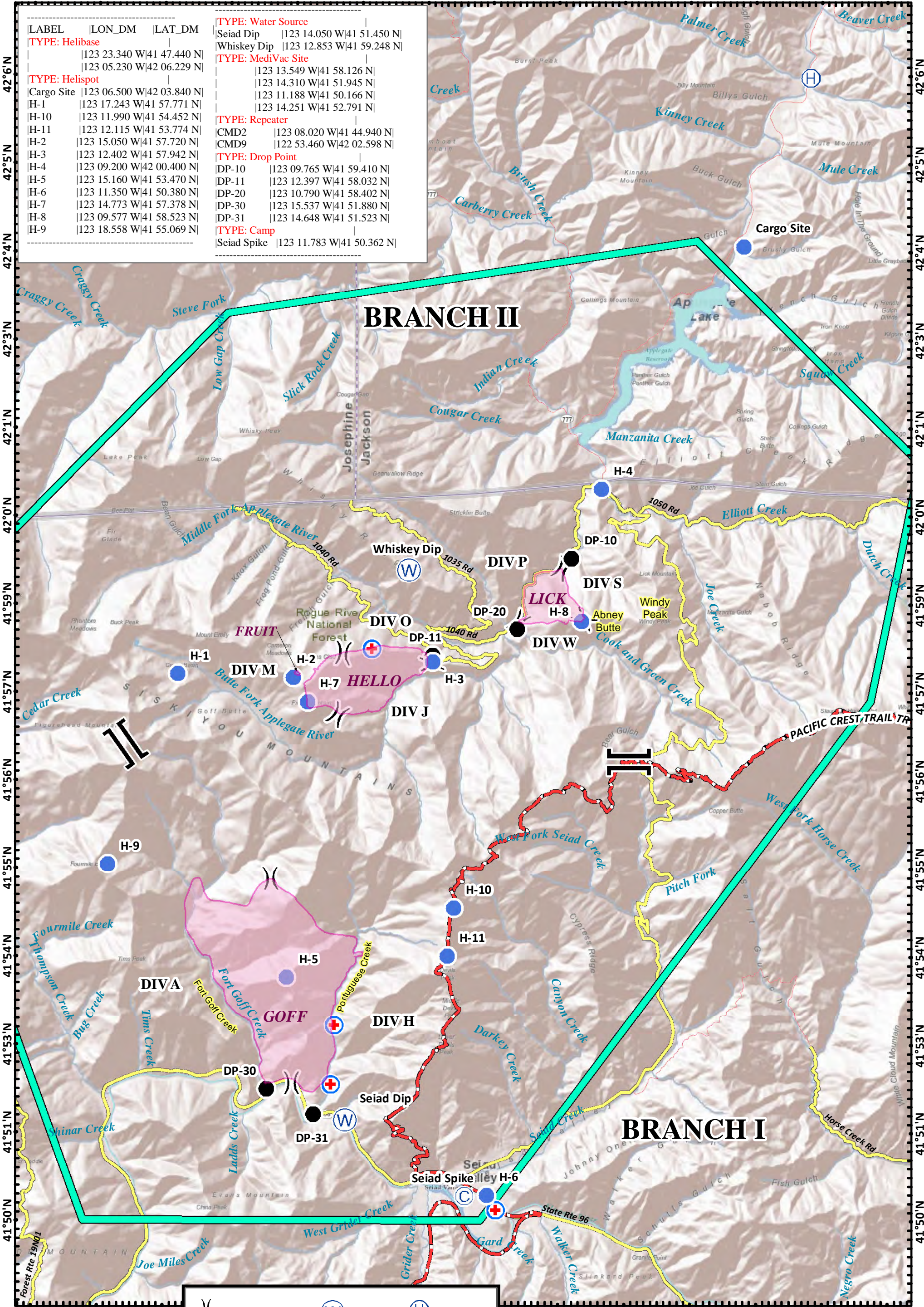


123°20'W 123°19'W 123°18'W 123°16'W 123°15'W 123°14'W 123°12'W 123°11'W 123°10'W 123°9'W 123°8'W 123°6'W 123°5'W 123°4'W



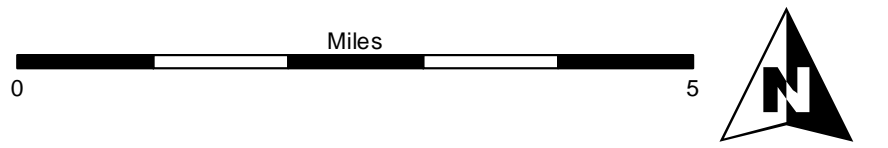
LABEL	LON_DM	LAT_DM	TYPE: Water Source
Seiad Dip	123 14.050 W 41 51.450 N		
Whiskey Dip	123 12.853 W 41 59.248 N		
TYPE: MediVac Site			
	123 13.549 W 41 58.126 N		
	123 14.310 W 41 51.945 N		
	123 11.188 W 41 50.166 N		
	123 14.251 W 41 52.791 N		
TYPE: Repeater			
CMD2	123 08.020 W 41 44.940 N		
CMD9	122 53.460 W 42 02.598 N		
TYPE: Drop Point			
DP-10	123 09.765 W 41 59.410 N		
DP-11	123 12.397 W 41 58.032 N		
DP-20	123 10.790 W 41 58.402 N		
DP-30	123 15.537 W 41 51.880 N		
DP-31	123 14.648 W 41 51.523 N		
TYPE: Camp			
Seiad Spike	123 11.783 W 41 50.362 N		

# BRANCH II

# BRANCH I

**Fort Complex**  
**CA-KNF-0005659**  
**AirOps**  
**8/19/2012**  
**DAY SHIFT**  
**Datum: NAD 83**

	Division		Water Source		Helibase
	Branch		Camp		Helispot
	Fire Perimeter		Drop Point		MediVac Site
	TFR Boundary				
	Road				
	PACIFIC CREST TRAIL				



SoCal Team 1  
 August 18, 2012