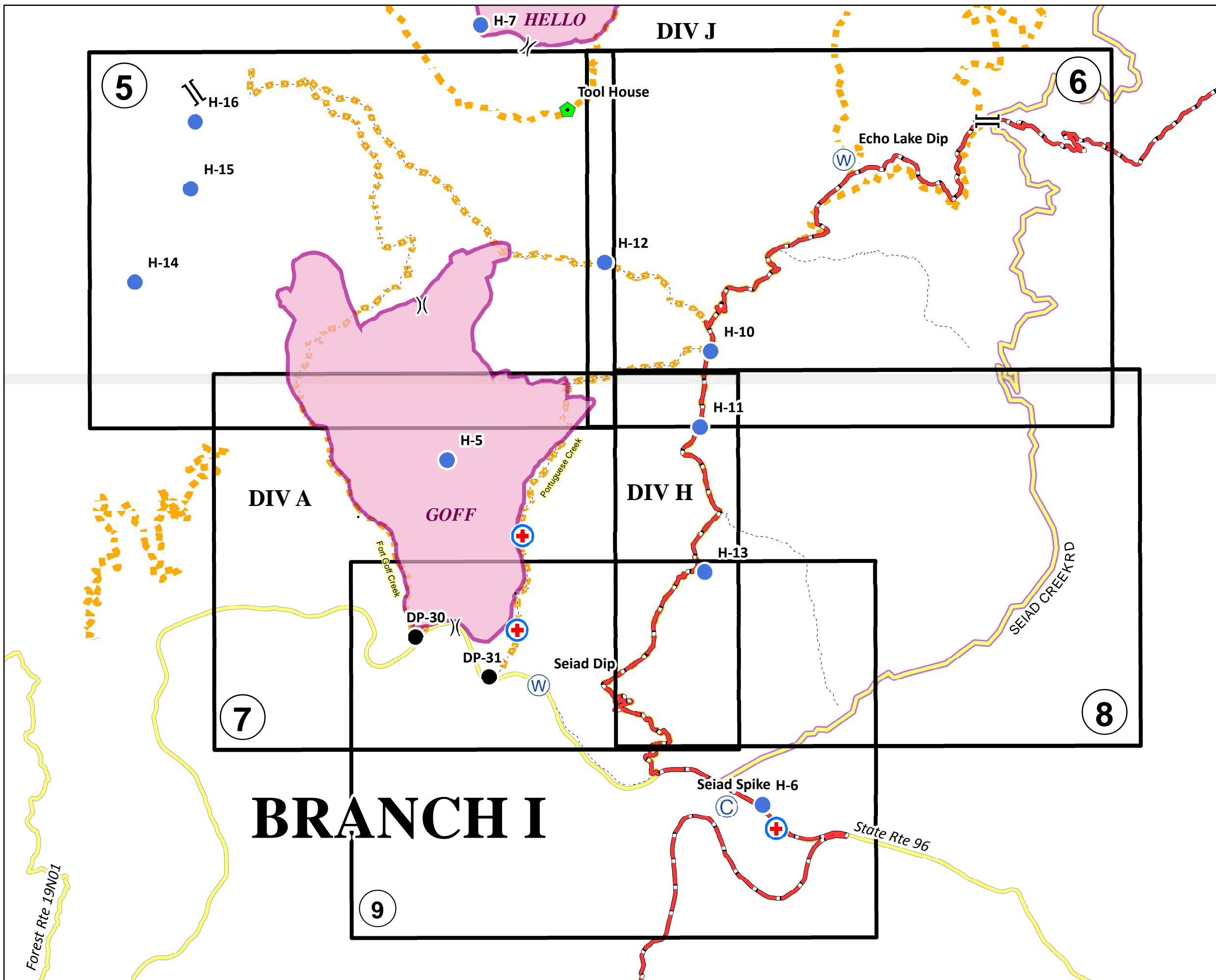


Fort Complex - GOFF Fire  
 CA-KNF-0005659  
 IAP  
 8/21/2012  
 DAY SHIFT  
 Datum: NAD 83



**MAP INDEX**

- Division
- Branch
- PACIFIC CREST TRAIL
- Other Trail
- Closed Route
- Main Route Between Branches
- Water Source
- Camp
- Drop Point
- Helibase
- Helispot
- MediVac Site
- Miscellaneous
- Other

**MAP INDEX**

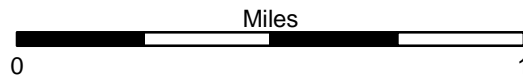


SoCal Team 1  
 August 20, 2012

Forest Rte 19N01

**Fort Complex-GOFF Fire**  
**CA-KNF-0005659**  
**IAP**  
**8/21/2012**  
**DAY SHIFT**  
**Datum: NAD 83**

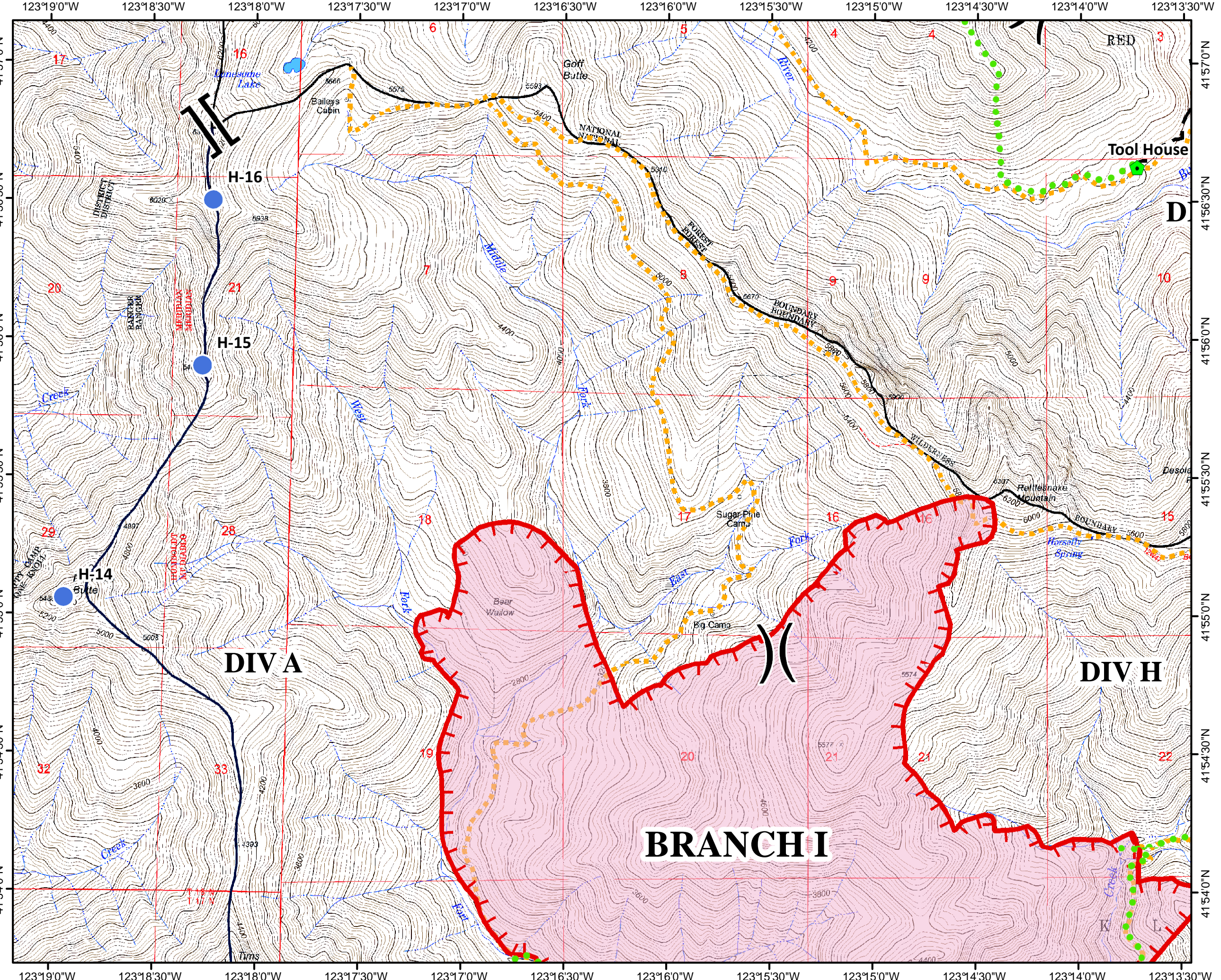
- Division
- Branch
- Completed Line
- Completed Dozer Line
- Completed Contingency Line
- Proposed Contingency Line
- Uncontrolled Fire Edge
- PACIFIC CREST TRAIL
- Other Trail
- Main Route Between Branches
- Closed Route
- Water Source
- Camp
- Drop Point
- Helibase
- Helispot
- MediVac Site
- Road Block
- Other

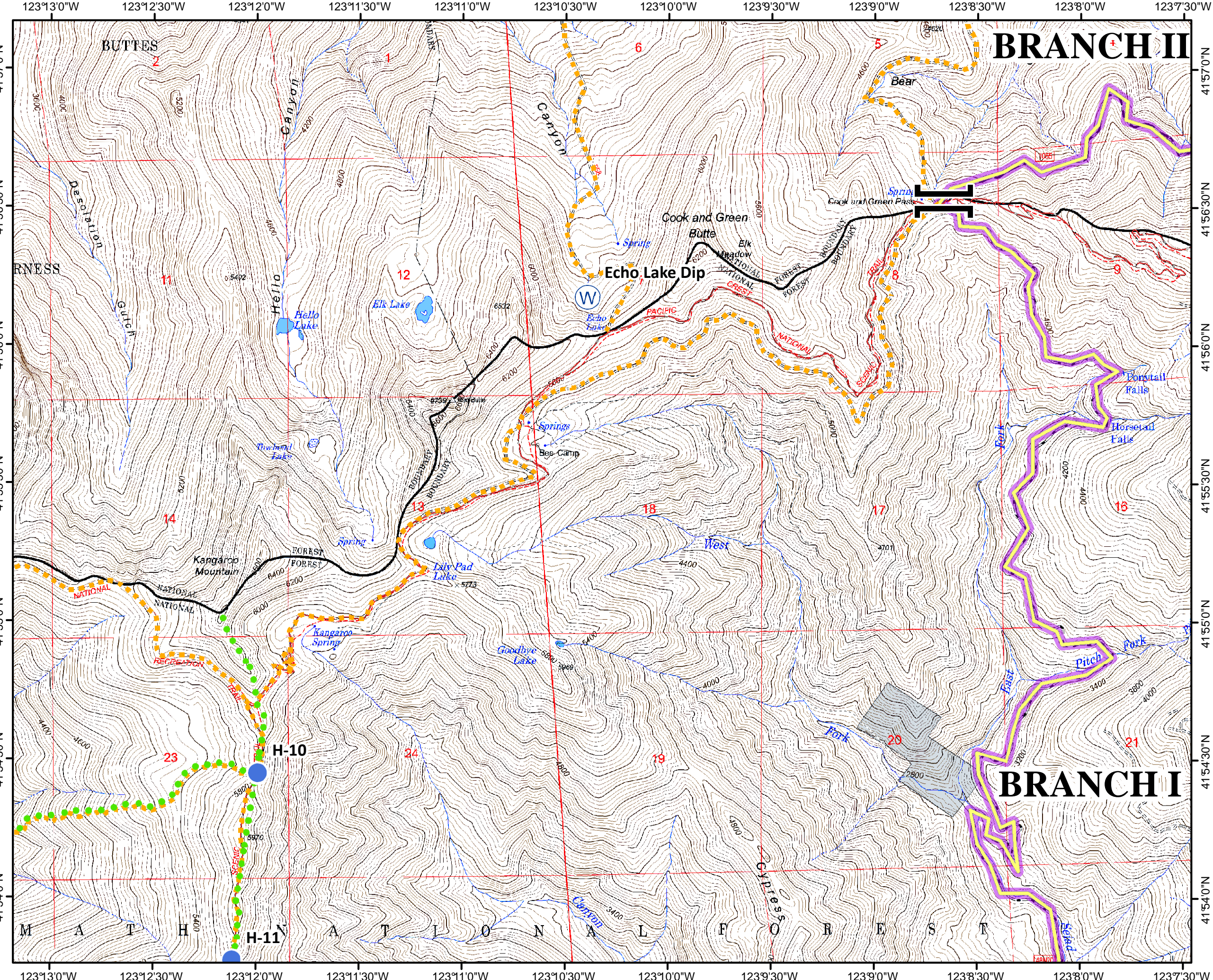


Map Page: 5



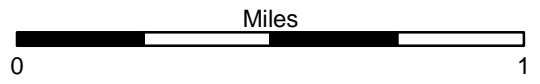
SoCal Team 1  
 August 20, 2012





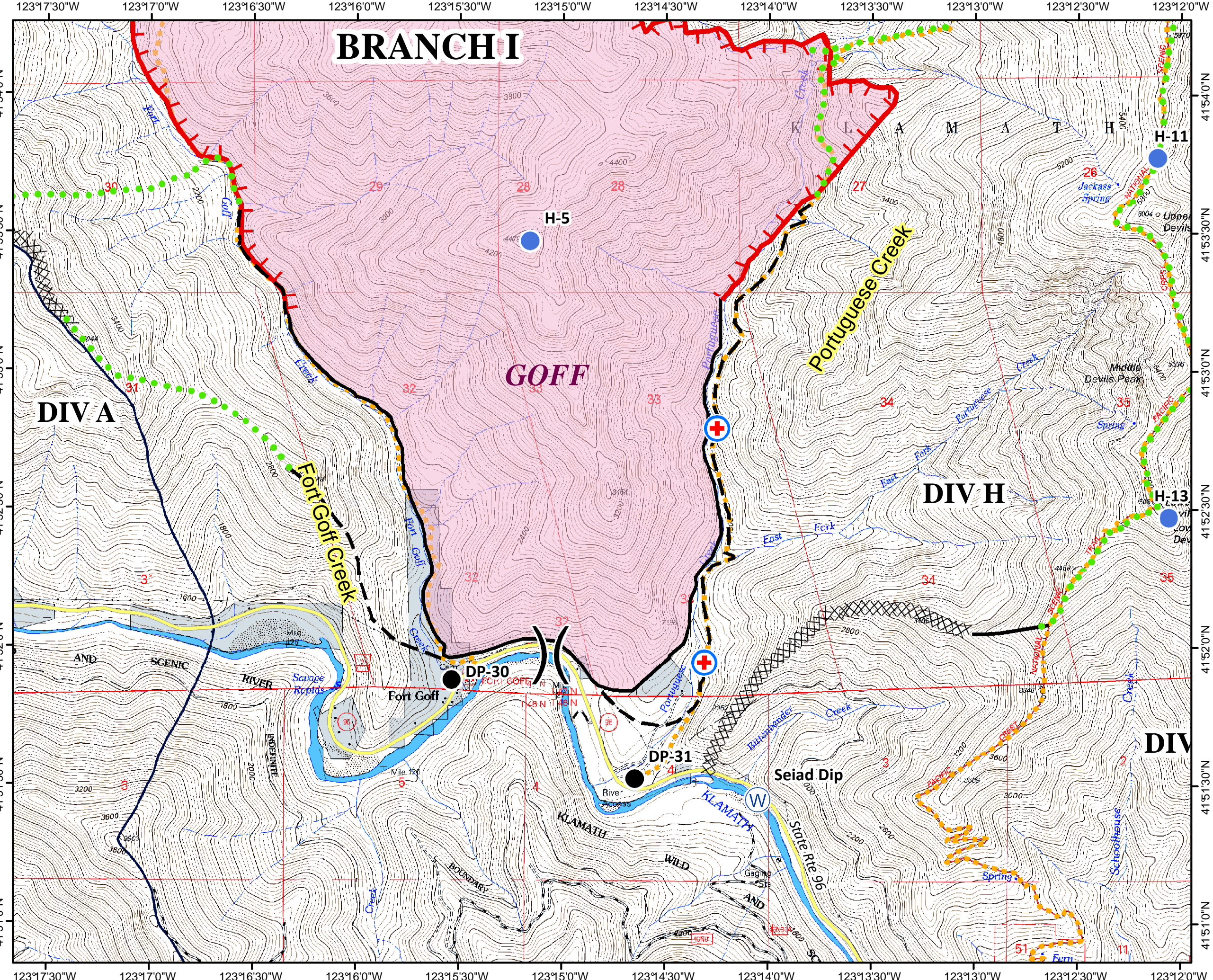
**Fort Complex-GOFF Fire**  
**CA-KNF-0005659**  
**IAP**  
**8/21/2012**  
**DAY SHIFT**  
**Datum: NAD 83**

	Division
	Branch
	Completed Line
	Completed Dozer Line
	Completed Contingency Line
	Proposed Contingency Line
	Uncontrolled Fire Edge
	PACIFIC CREST TRAIL
	Other Trail
	Main Route Between Branches
	Closed Route
	Water Source
	Camp
	Drop Point
	Helibase
	Helispot
	MediVac Site
	Road Block
	Other



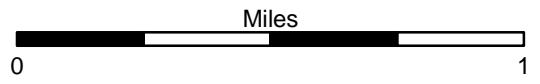
**Map Page: 6**

SoCal Team 1  
 August 20, 2012



**Fort Complex-GOFF Fire**  
**CA-KNF-0005659**  
**IAP**  
**8/21/2012**  
**DAY SHIFT**  
**Datum: NAD 83**


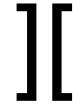

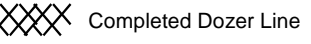
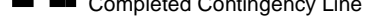



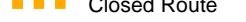










	Division
	Branch
	Completed Line
	Completed Dozer Line
	Completed Contingency Line
	Proposed Contingency Line
	Uncontrolled Fire Edge
	PACIFIC CREST TRAIL
	Other Trail
	Main Route Between Branches
	Closed Route
	Water Source
	Camp
	Drop Point
	Helibase
	Helispot
	MediVac Site
	Road Block
	Other

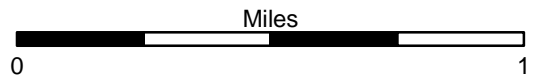


**Map Page: 7**

SoCal Team 1  
August 20, 2012

**Fort Complex-GOFF Fire**  
**CA-KNF-0005659**  
**IAP**  
**8/21/2012**  
**DAY SHIFT**  
**Datum: NAD 83**

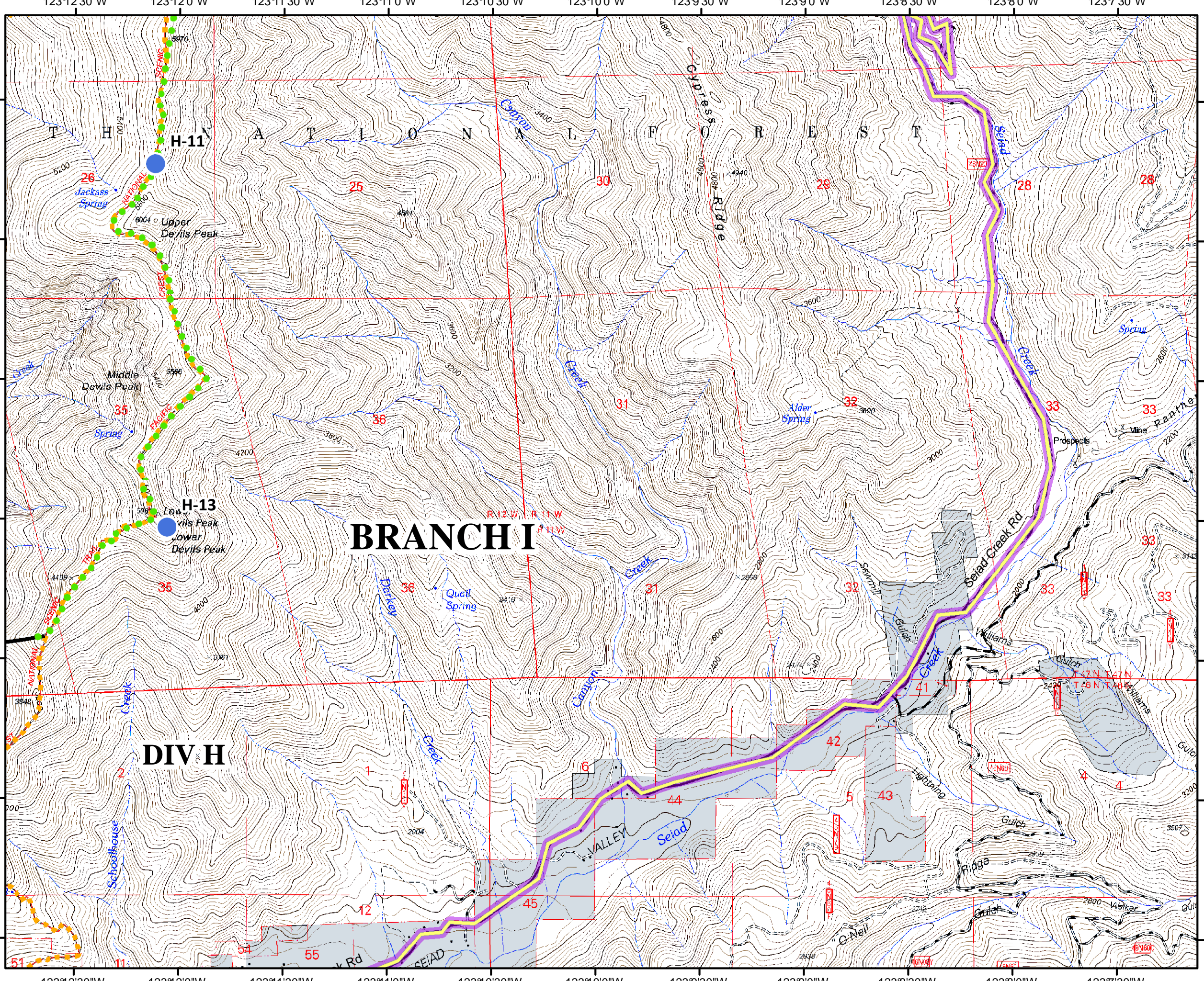
	Division
	Branch
	Completed Line
	Completed Dozer Line
	Completed Contingency Line
	Proposed Contingency Line
	Uncontrolled Fire Edge
	PACIFIC CREST TRAIL
	Other Trail
	Main Route Between Branches
	Closed Route
	Water Source
	Camp
	Drop Point
	Helibase
	Helispot
	MediVac Site
	Road Block
	Other

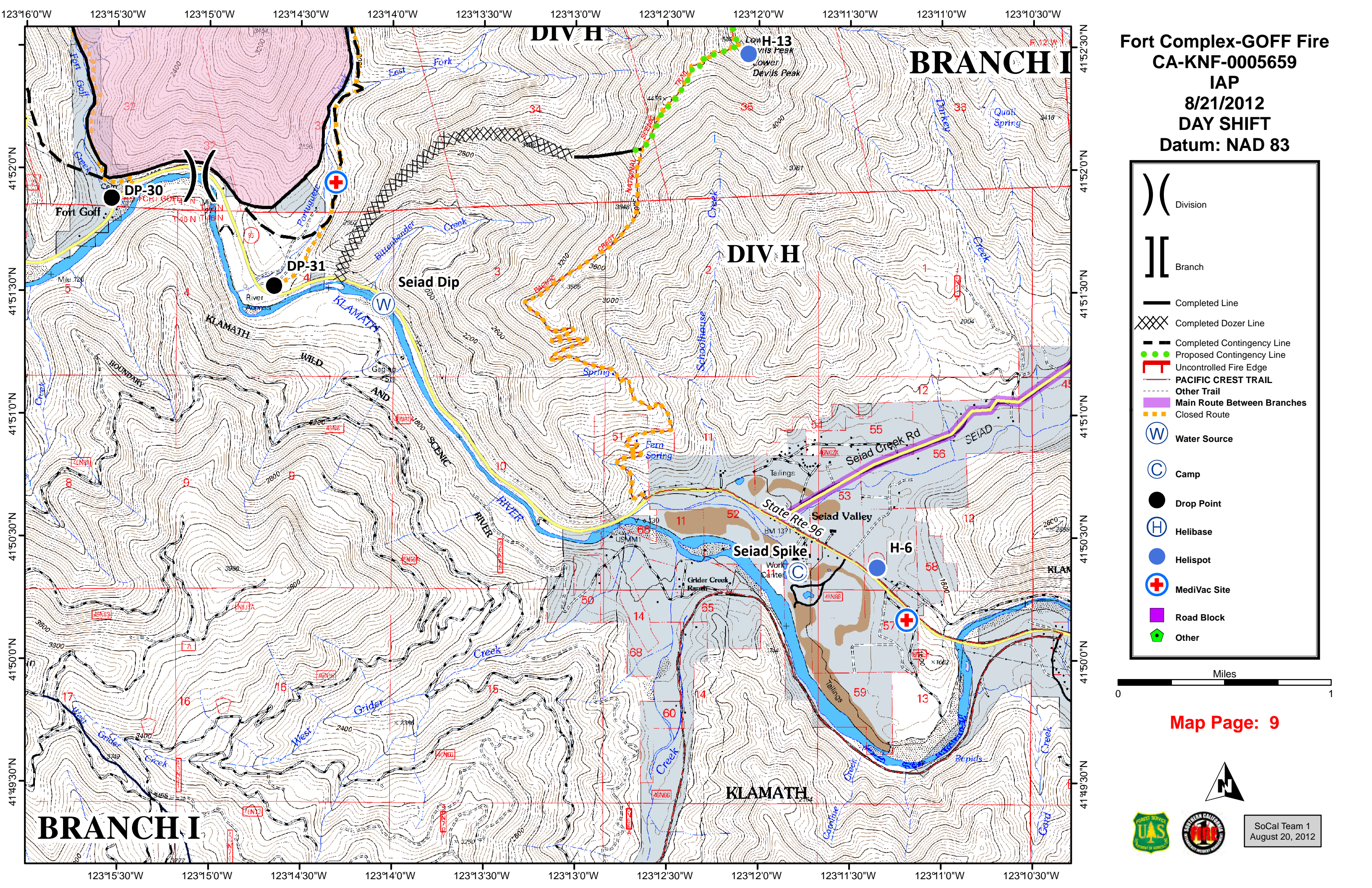


**Map Page: 8**



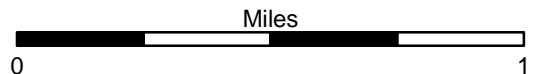
SoCal Team 1  
 August 20, 2012





**Fort Complex-GOFF Fire**  
**CA-KNF-0005659**  
**IAP**  
**8/21/2012**  
**DAY SHIFT**  
**Datum: NAD 83**

	Division
	Branch
	Completed Line
	Completed Dozer Line
	Completed Contingency Line
	Proposed Contingency Line
	Uncontrolled Fire Edge
	PACIFIC CREST TRAIL
	Other Trail
	Main Route Between Branches
	Closed Route
	Water Source
	Camp
	Drop Point
	Helibase
	Helispot
	MediVac Site
	Road Block
	Other



**Map Page: 9**



SoCal Team 1  
 August 20, 2012