

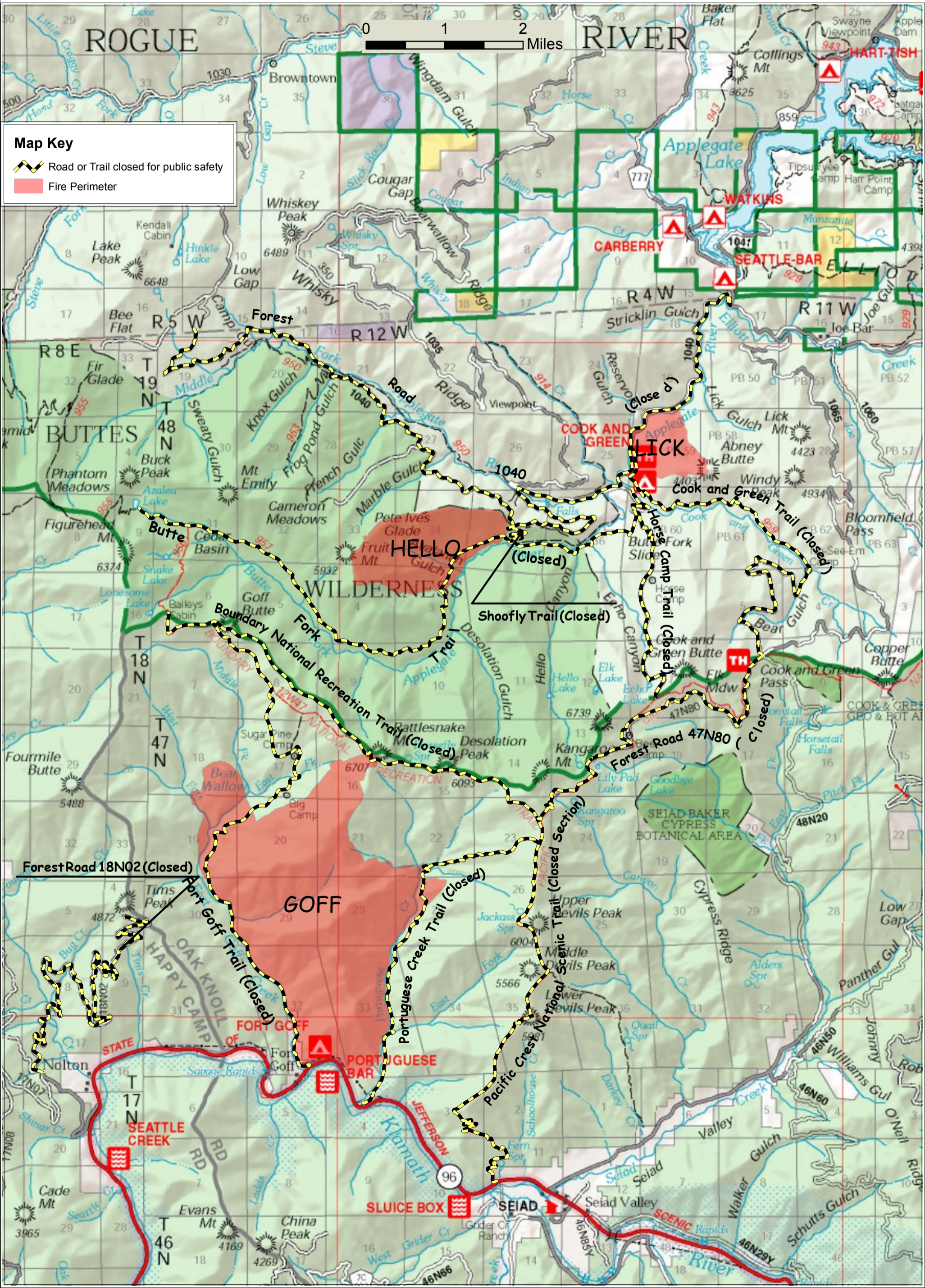


Fort Complex

Klamath and Rogue River-Siskiyou National Forests



Fire perimeters as of 20 August 2012 at 1300.



Map Key

- Road or Trail closed for public safety
- Fire Perimeter

Forest Road 18N02 (Closed)

Fort Goff Trail (Closed)

Oak Knoll of Happy Camp Rd

Fort Goff

GOFF

PORTUGUESE BAR

JEFFERSON

SLUICE BOX

Portuguese Creek Trail (Closed)

Pacific Crest National Scenic Trail (Closed Section)

Upper Devils Peak

Middle Devils Peak

Lower Devils Peak

Seiad

Seiad Valley

Walker Gulch

Schutts Gulch

Seiad River

Seiad Valley

Seiad

Forest Road 47N80 (Closed)

Cook and Green Trail (Closed)

Horse Camp Trail (Closed)

Cook and Green Trail (Closed)

Seiad Baker Cypress Botanical Area

Seiad

Seiad Valley

Walker Gulch

Schutts Gulch

Seiad River

Seiad Valley

Seiad

Forest Road 47N80 (Closed)

Cook and Green Trail (Closed)

Horse Camp Trail (Closed)

Cook and Green Trail (Closed)

Seiad Baker Cypress Botanical Area

Seiad

Seiad Valley

Walker Gulch

Schutts Gulch

Seiad River

Seiad Valley

Seiad

Forest Road 47N80 (Closed)

Cook and Green Trail (Closed)

Horse Camp Trail (Closed)

Cook and Green Trail (Closed)

Seiad Baker Cypress Botanical Area

Seiad

Seiad Valley

Walker Gulch

Schutts Gulch

Seiad River

Seiad Valley

Seiad

Forest Road 47N80 (Closed)

Cook and Green Trail (Closed)

Horse Camp Trail (Closed)

Cook and Green Trail (Closed)

Seiad Baker Cypress Botanical Area

Seiad

Seiad Valley

Walker Gulch

Schutts Gulch

Seiad River

Seiad Valley

Seiad