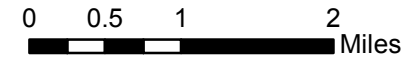
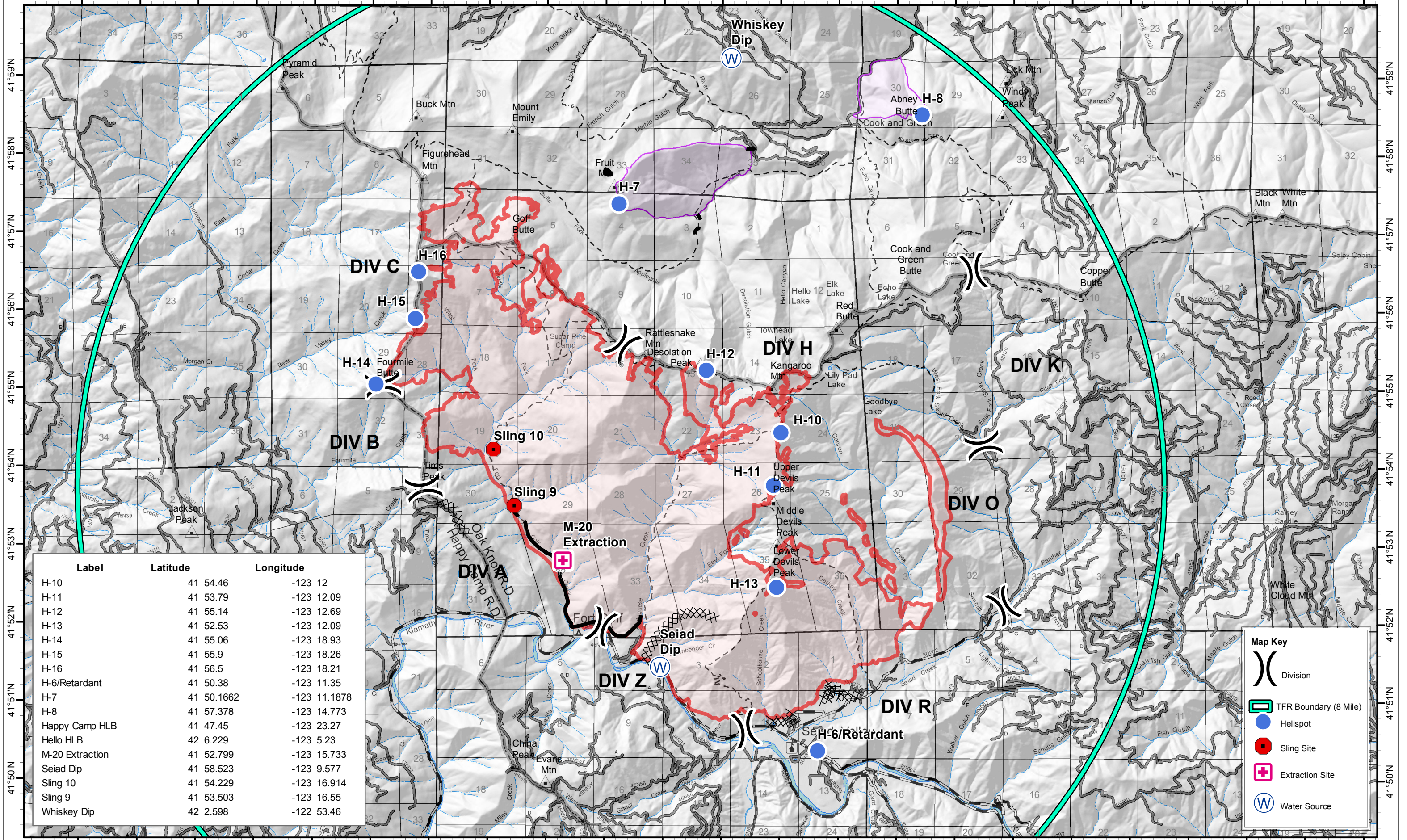


# Goff Fire

## Air Operations Map 2012-8-29



123°24'W 123°23'W 123°22'W 123°21'W 123°20'W 123°19'W 123°18'W 123°17'W 123°16'W 123°15'W 123°14'W 123°13'W 123°12'W 123°11'W 123°10'W 123°9'W 123°8'W 123°7'W 123°6'W 123°5'W 123°4'W 123°3'W 123°2'W



Label	Latitude	Longitude
H-10	41 54.46	-123 12
H-11	41 53.79	-123 12.09
H-12	41 55.14	-123 12.69
H-13	41 52.53	-123 12.09
H-14	41 55.06	-123 18.93
H-15	41 55.9	-123 18.26
H-16	41 56.5	-123 18.21
H-6/Retardant	41 50.38	-123 11.35
H-7	41 50.1662	-123 11.1878
H-8	41 57.378	-123 14.773
Happy Camp HLB	41 47.45	-123 23.27
Hello HLB	42 6.229	-123 5.23
M-20 Extraction	41 52.799	-123 15.733
Seiad Dip	41 58.523	-123 9.577
Sling 10	41 54.229	-123 16.914
Sling 9	41 53.503	-123 16.55
Whiskey Dip	42 2.598	-122 53.46

**Map Key**

- Division
- TFR Boundary (8 Mile)
- Helispot
- Sling Site
- Extraction Site
- Water Source