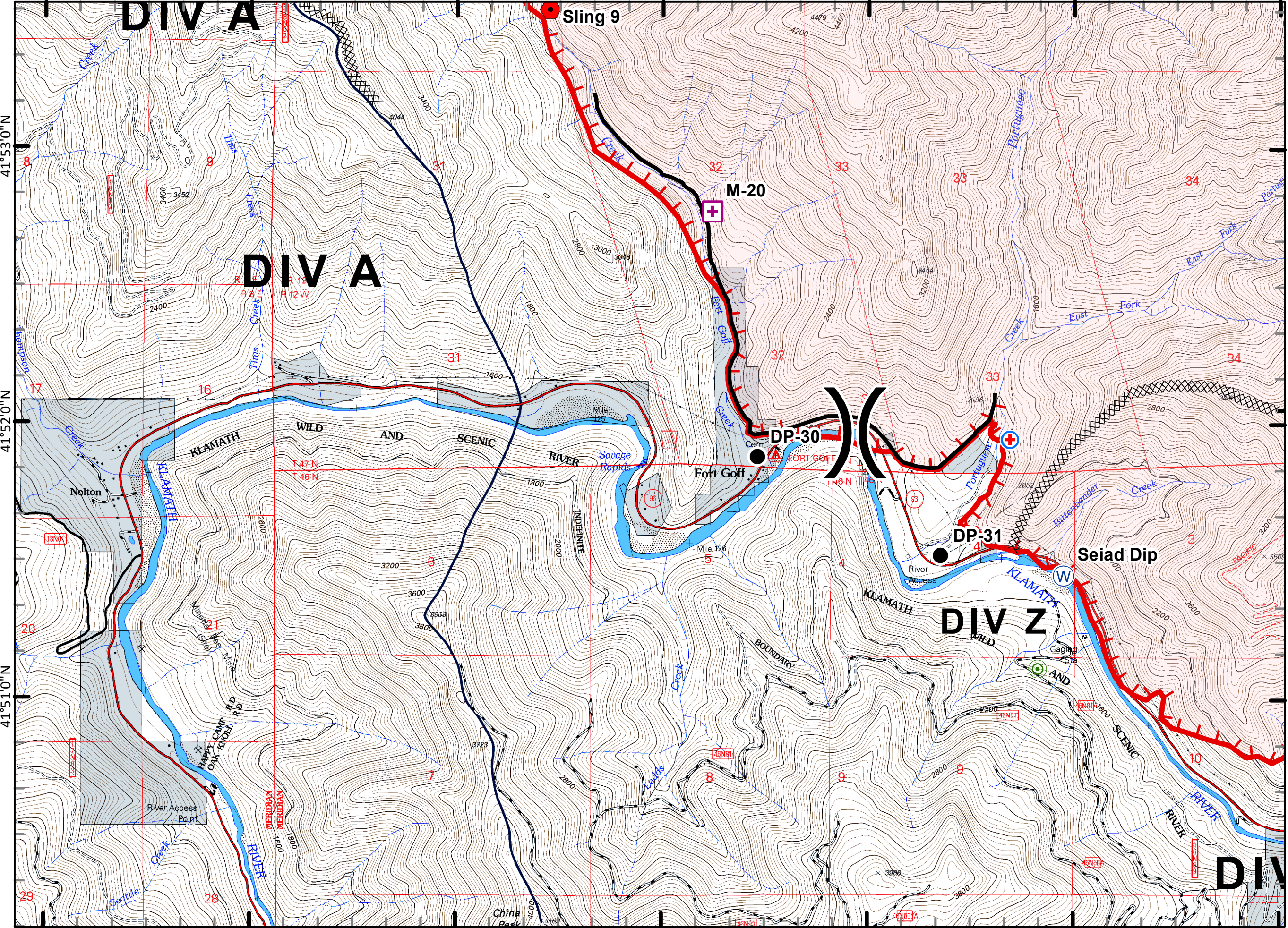


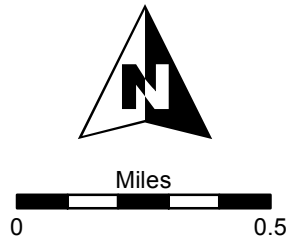
123°19'0"W 123°18'0"W 123°17'0"W 123°16'0"W 123°15'0"W 123°14'0"W 123°13'0"W

Goff Incident
CA-KNF-0005659
IAP
8/29/2012
DAY SHIFT
Datum: NAD 83
Acres: 15,797



	Division
	Completed Line
	Uncontrolled Fire Edge
	Vehicle Weed Wash
	Camp
	Drop Point
	Extraction
	Helispot
	MediVac Site
	Sling
	Water Source
	Sensitive Plant Areas and Wilderness

MAP PAGE: 2



NIMO - Kleinman
8/29/2012

123°19'0"W 123°18'0"W 123°17'0"W 123°16'0"W 123°15'0"W 123°14'0"W 123°13'0"W