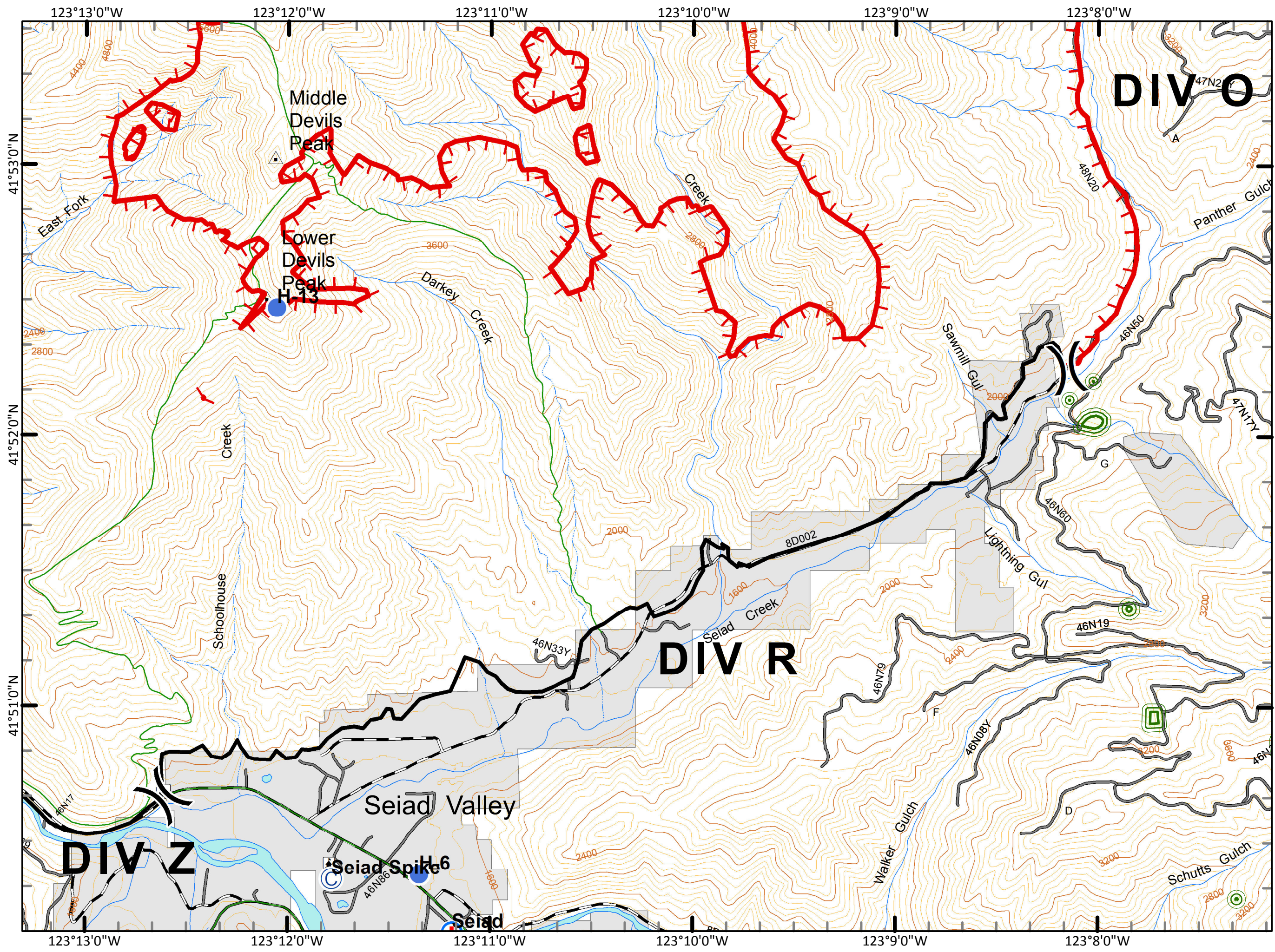
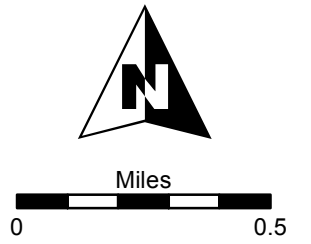


Goff Incident
CA-KNF-0005659
IAP
9/01/2012
DAY SHIFT
Datum: NAD 83
Acres: 19,725



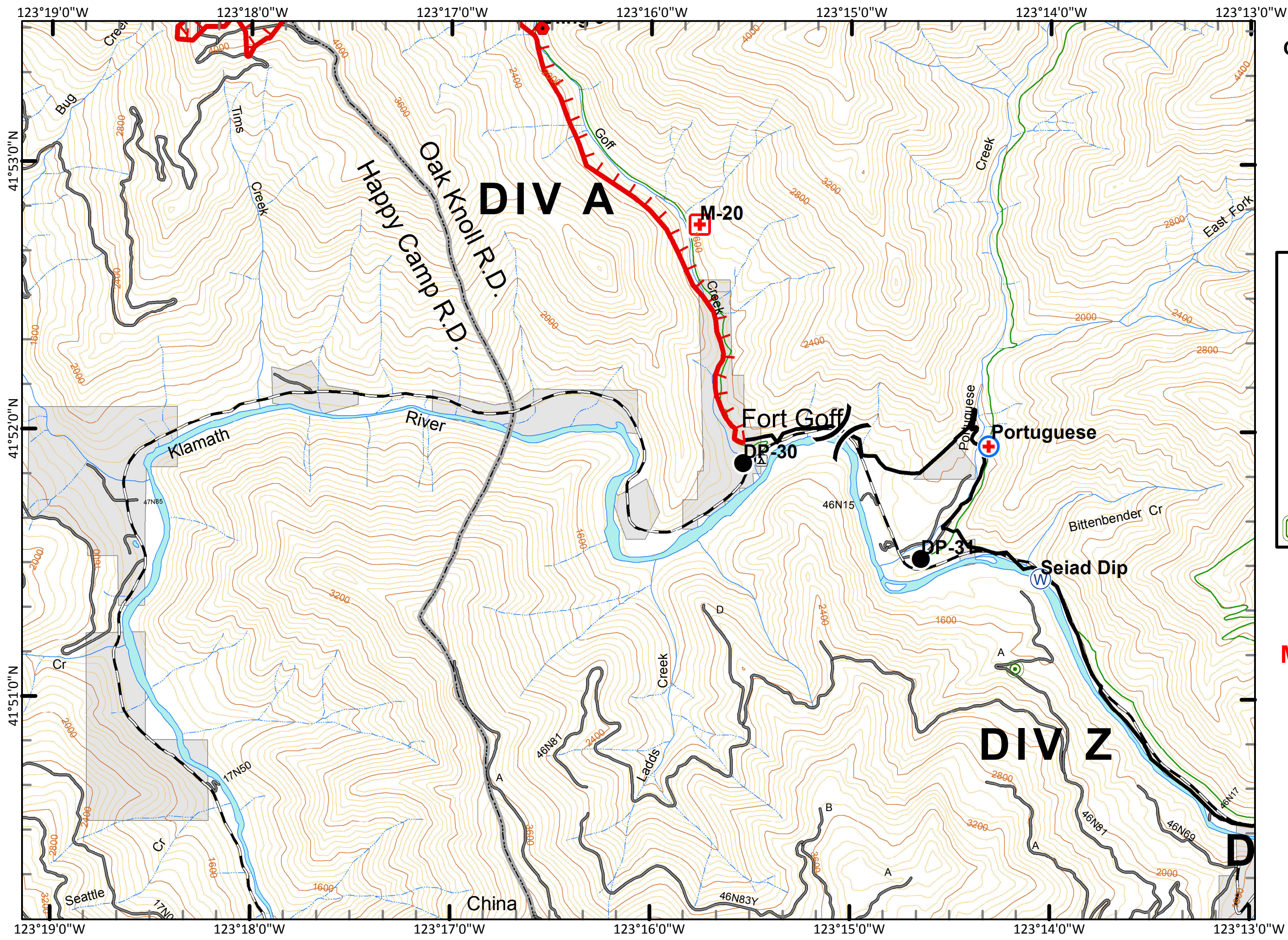
- Division
- Completed Line
- Uncontrolled Fire Edge
- Vehicle Weed Wash
- Camp
- Drop Point
- Extraction
- Helispot
- MediVac Site
- Sling
- Water Source
- Sensitive Plant Areas and Wilderness

MAP PAGE: 1



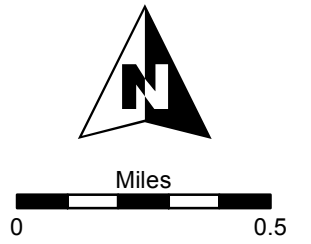
NIMO - Kleinman
8/31/2012

Goff Incident
CA-KNF-0005659
IAP
9/01/2012
DAY SHIFT
Datum: NAD 83
Acres: 19,725



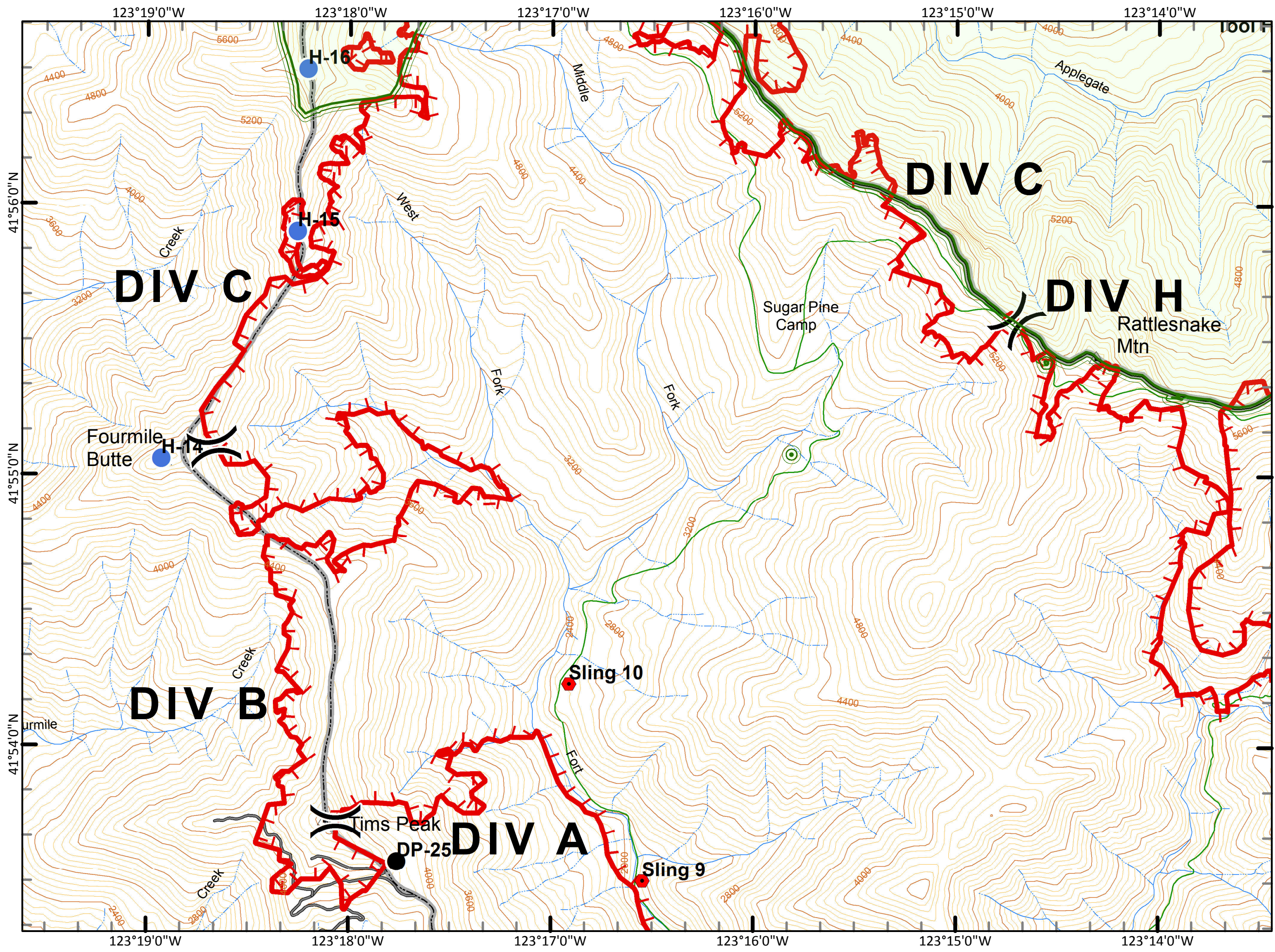
- Division
- Completed Line
- Uncontrolled Fire Edge
- Vehicle Weed Wash
- Camp
- Drop Point
- Extraction
- Helispot
- MediVac Site
- Sling
- Water Source
- Sensitive Plant Areas and Wilderness

MAP PAGE: 2



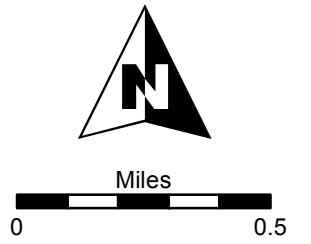
NIMO - Kleinman
 8/31/2012

Goff Incident
CA-KNF-0005659
IAP
9/01/2012
DAY SHIFT
Datum: NAD 83
Acres: 19,725



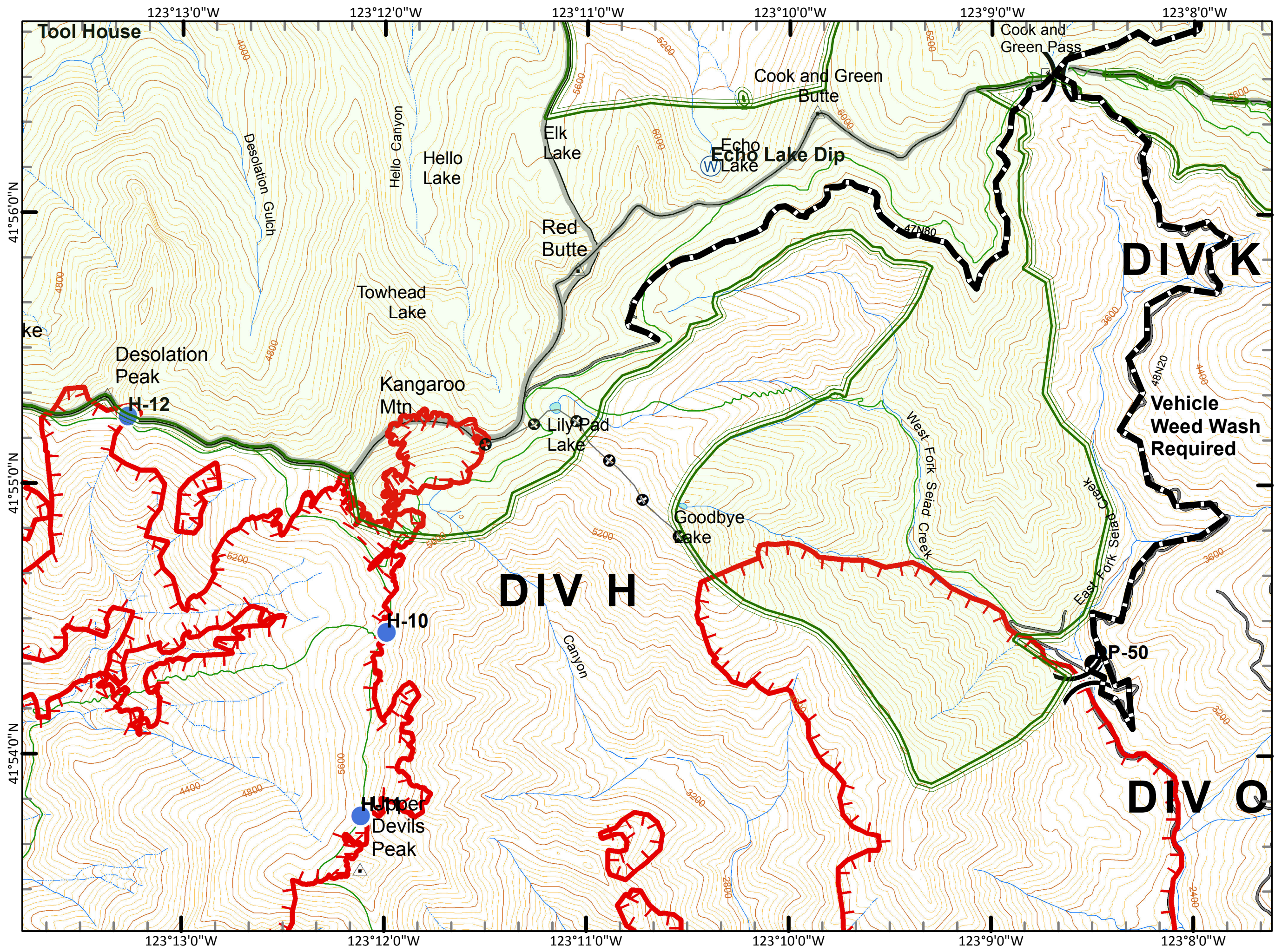
- () Division
- Completed Line
- ┌─┐ Uncontrolled Fire Edge
- ▬ Vehicle Weed Wash
- ⊙ Camp
- Drop Point
- ⊕ Extraction
- ⊙ Helispot
- ⊕ MediVac Site
- ⬠ Sling
- ⊙ Water Source
- ▭ Sensitive Plant Areas and Wilderness

MAP PAGE: 3



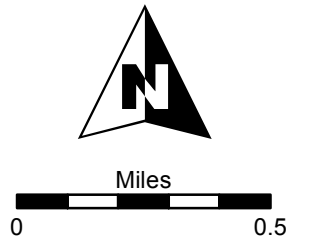
NIMO - Kleinman
8/31/2012

Goff Incident
CA-KNF-0005659
IAP
9/01/2012
DAY SHIFT
Datum: NAD 83
Acres: 19,725



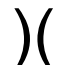


- () Division
- Completed Line
- ┌ Uncontrolled Fire Edge
- ▬ Vehicle Weed Wash
- ⊙ Camp
- Drop Point
- ⊕ Extraction
- Helispot
- ⊕ MediVac Site
- ◆ Sling
- ⊙ Water Source
- ▭ Sensitive Plant Areas and Wilderness

MAP PAGE: 4

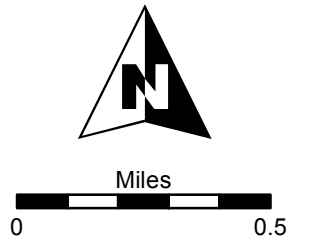


NIMO - Kleinman
 8/31/2012

Goff Incident
CA-KNF-0005659
IAP
9/01/2012
DAY SHIFT
Datum: NAD 83
Acres: 19,725

-  Division
-  Completed Line
-  Uncontrolled Fire Edge
-  Vehicle Weed Wash
-  Camp
-  Drop Point
-  Extraction
-  Helispot
-  MediVac Site
-  Sling
-  Water Source
-  Sensitive Plant Areas and Wilderness

MAP PAGE: 5



NIMO - Kleinman
8/31/2012

