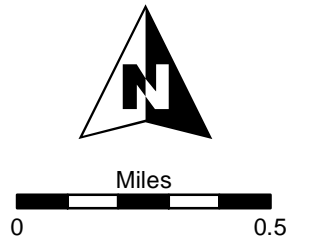


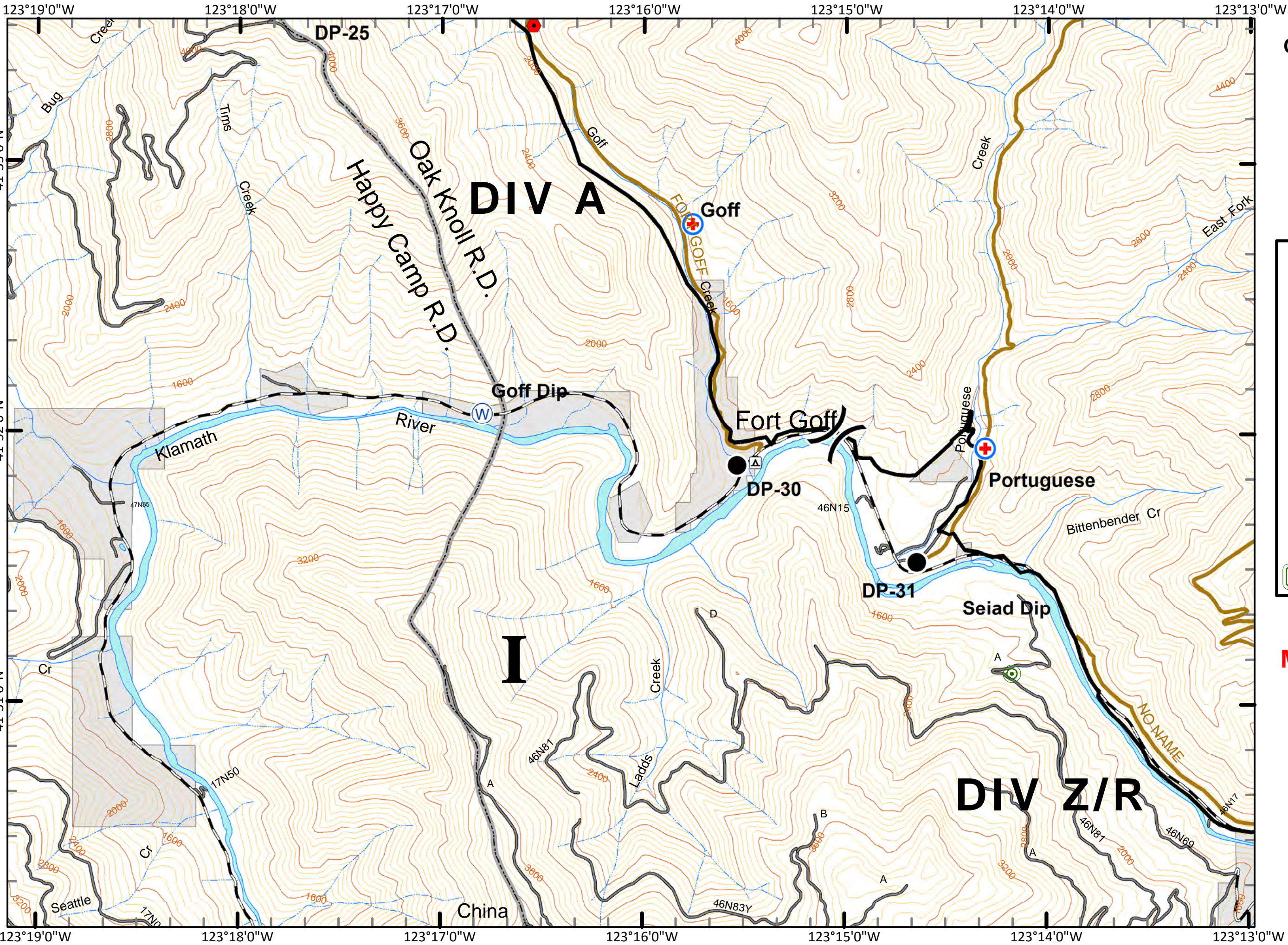
**Fort Complex**  
**CA-KNF-0005659**  
**IAP**  
**9/03/2012**  
**DAY SHIFT**  
**Datum: NAD 83**  
**Acres: 20,941**

- Division
- Branch
- Completed Line
- Uncontrolled Fire Edge
- Vehicle Weed Wash
- Camp
- Drop Point
- Extraction
- Helispot
- MediVac Site
- Sling
- Water Source
- Vehicle Weed Wash Sensitive Plant Areas and Wilderness

**MAP PAGE: 1**



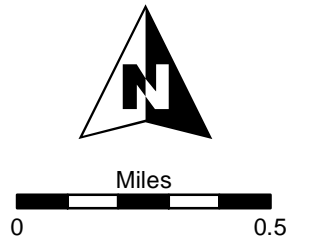




**Fort Complex**  
**CA-KNF-0005659**  
**IAP**  
**9/03/2012**  
**DAY SHIFT**  
**Datum: NAD 83**  
**Acres: 20,941**

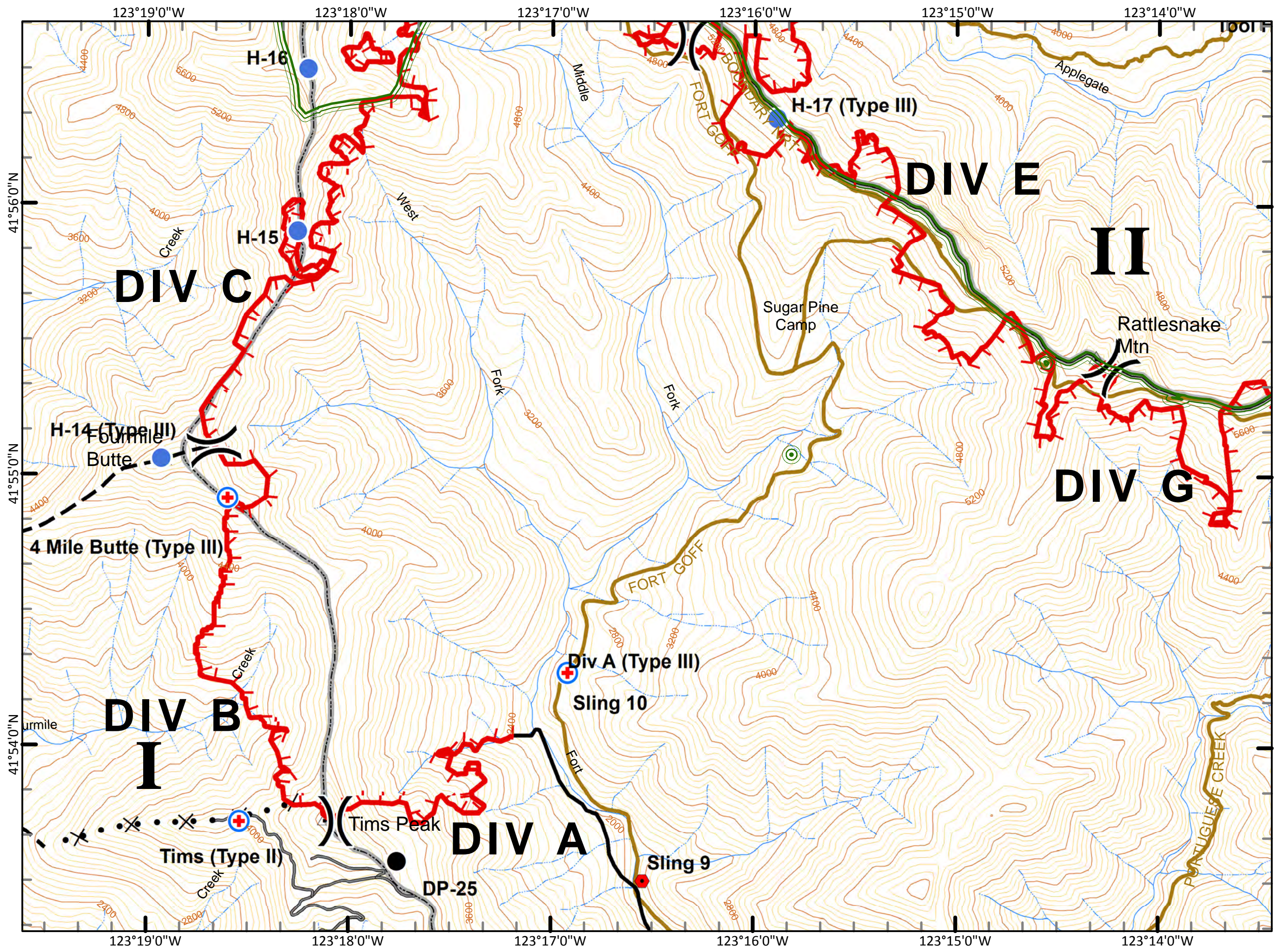
- Division
- Branch
- Completed Line
- Uncontrolled Fire Edge
- Vehicle Weed Wash
- Camp
- Drop Point
- Extraction
- Helispot
- MediVac Site
- Sling
- Water Source
- Vehicle Weed Wash Sensitive Plant Areas and Wilderness

**MAP PAGE: 2**



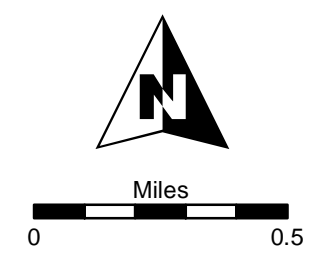


**Fort Complex**  
**CA-KNF-0005659**  
**IAP**  
**9/03/2012**  
**DAY SHIFT**  
**Datum: NAD 83**  
**Acres: 20,941**



	Division
	Branch
	Completed Line
	Uncontrolled Fire Edge
	Vehicle Weed Wash
	Camp
	Drop Point
	Extraction
	Helispot
	MediVac Site
	Sling
	Water Source
	Vehicle Weed Wash Sensitive Plant Areas and Wilderness

**MAP PAGE: 3**

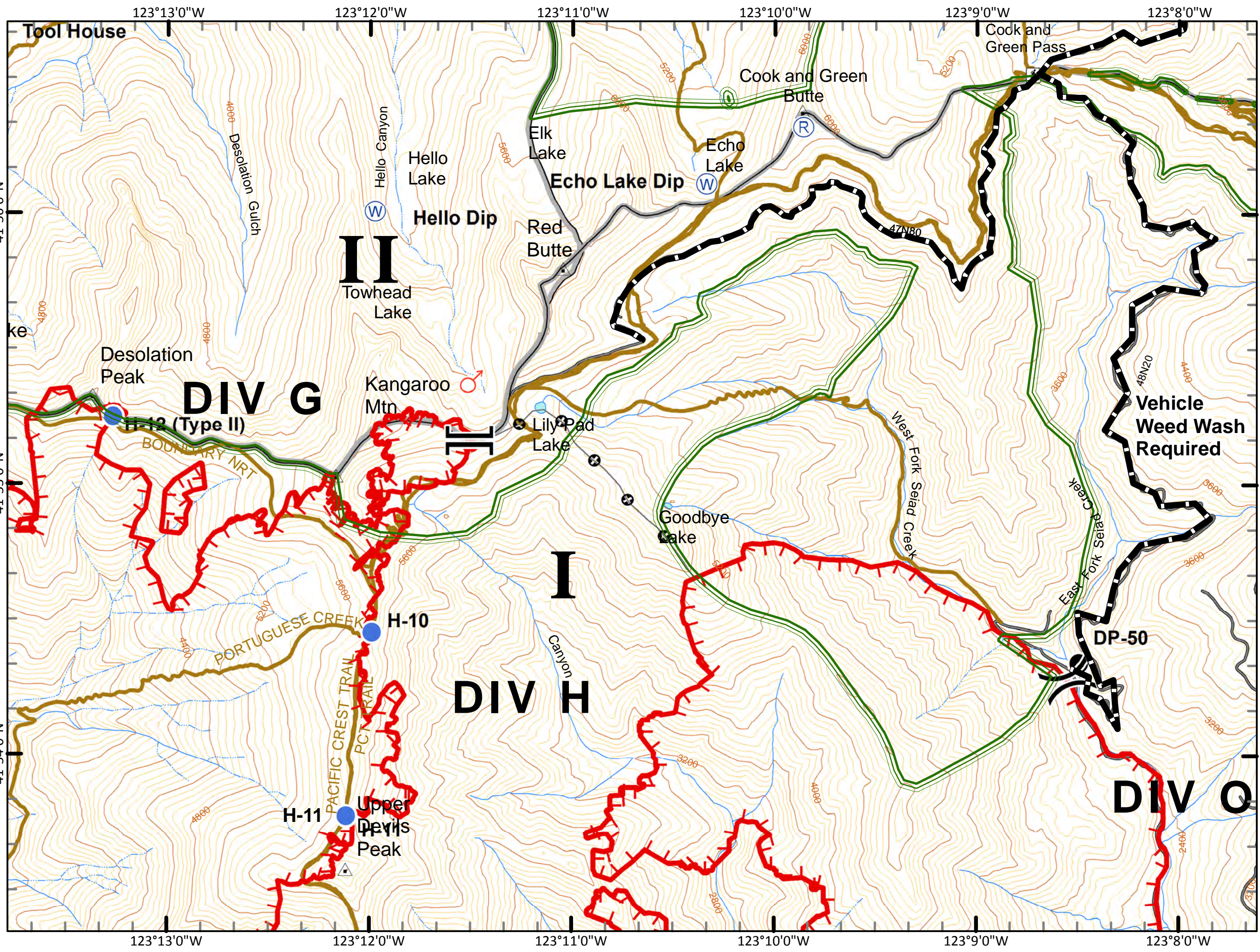
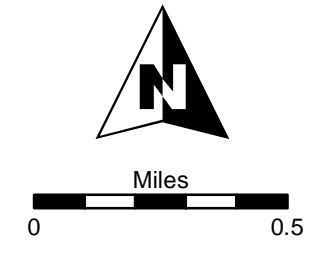




**Fort Complex**  
**CA-KNF-0005659**  
**IAP**  
**9/03/2012**  
**DAY SHIFT**  
**Datum: NAD 83**  
**Acres: 20,941**

	Division
	Branch
	Completed Line
	Uncontrolled Fire Edge
	Vehicle Weed Wash
	Camp
	Drop Point
	Extraction
	Helispot
	MediVac Site
	Sling
	Water Source
	Vehicle Weed Wash Sensitive Plant Areas and Wilderness

**MAP PAGE: 4**





**Fort Complex**  
**CA-KNF-0005659**  
**IAP**  
**9/03/2012**  
**DAY SHIFT**  
**Datum: NAD 83**  
**Acres: 20,941**

- Division
- Branch
- Completed Line
- Uncontrolled Fire Edge
- Vehicle Weed Wash
- Camp
- Drop Point
- Extraction
- Helispot
- MediVac Site
- Sling
- Water Source
- Vehicle Weed Wash Sensitive Plant Areas and Wilderness

**MAP PAGE: 5**

